

Harbourfront Commission

For discussion
on 17 May 2011

HC/07/2011

The Leisure and Cultural Services Department – “Park Deco” 「潮裝公園」 Project

PURPOSE

This paper briefs Members on a pilot project known as “Park Déco” 「潮裝公園」 initiated by the Leisure and Cultural Services Department (LCSD) for its leisure venues.

BACKGROUND

2. To enhance the outlook of our parks and playgrounds and to provide park goers with a more relaxed and enjoyable environment, LCSD initiated a “Park Déco” pilot project in 2010 in two of its existing parks. The project comprises two key elements: (a) installation of innovative and creative park furniture for public enjoyment; and (b) adoption of a new set of design and wording for our park signage and pleasure grounds regulations.

3. The Project is divided into two phases. Two existing leisure venues, namely Quarry Bay Park (QBP) in Eastern District (Phase 1) and Cornwall Street Park (CSP) (Phase 2) in Sham Shui Po District, are selected.

THE PILOT PROJECT

(a) The QBP Project

4. LCSD has engaged the Hong Kong Arts Centre (HKAC) as its artistic collaborator to implement the pilot project at QBP. Three sets of

Harbourfront Commission

HC/07/2011

new park furniture, namely Musical Chair, Branches and Assembled Topology, as well as a new signage system have been installed at different locations along the harbourfront in QBP with the theme of “Oasis along the Seashore”. The construction works is scheduled for completion in early May 2011. The design of the furniture and signage are at **Annexes A** and **B** respectively for Members’ reference. A launch ceremony is scheduled for 12 May 2011 to officially introduce the concept of the Park Déco project and its deliverables to the media/public.

(b) The CSP Project

5. On the other hand, LCSD has engaged the Hong Kong Design Centre (HKDC) as its Design Collaborator/partner in implementing the CSP project. In addition to inviting artists to design and produce creative park furniture, HKDC will also assist LCSD to evaluate the feedback from the public and park users in implementing “Park Déco” pilot project and draw up a set of design parameters for future park furniture and signage. We expect that the furniture in CSP will be available for public enjoyment by August 2012.

WAY FORWARD

6. Upon completion of the projects, LCSD will assess the outcome and decide how to take forward this new concept to apply it in our new park projects as well as existing venues.

7. Members are invited to note the presentation on the pilot project by LCSD.

The Leisure and Cultural Services Department
May 2011

Design of New Park Furniture

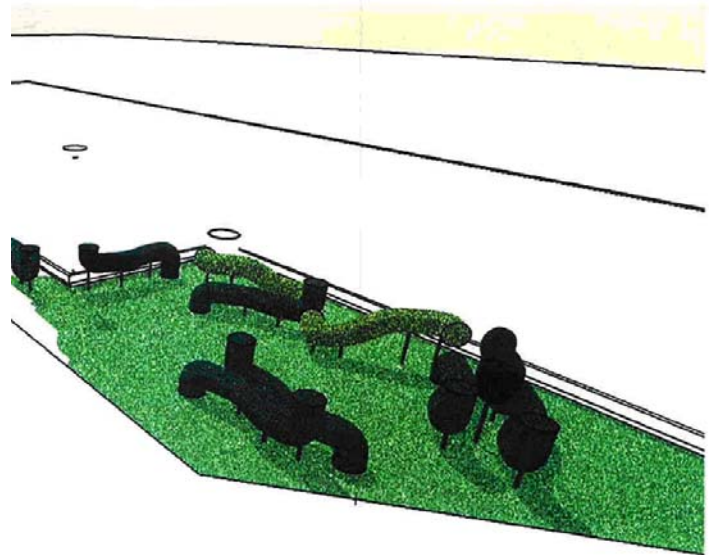
Musical Chair



Branches



Assembled Topology



New Signage System

Wording and Pictogram on Signage

- The pictogram / sign for those prohibited activities / activities probably causing inconvenience to other park users under the Law would be placed at the entrance of venue so as to provide a clear and direct message to the public. For example: “No smoking”, “No cycling”, “No dogs allowed” and “No kite-flying”.
- For those advisory / warning signs would be placed at the “problematic areas”. For example: “No skateboarding”, “No ball games” and “No climbing”. The wording will also be revised to provide a more friendly / positive tone.
- In general, the number of signage would be minimized and the size of wording on the signs would be larger.

New Design on Composite Signage

