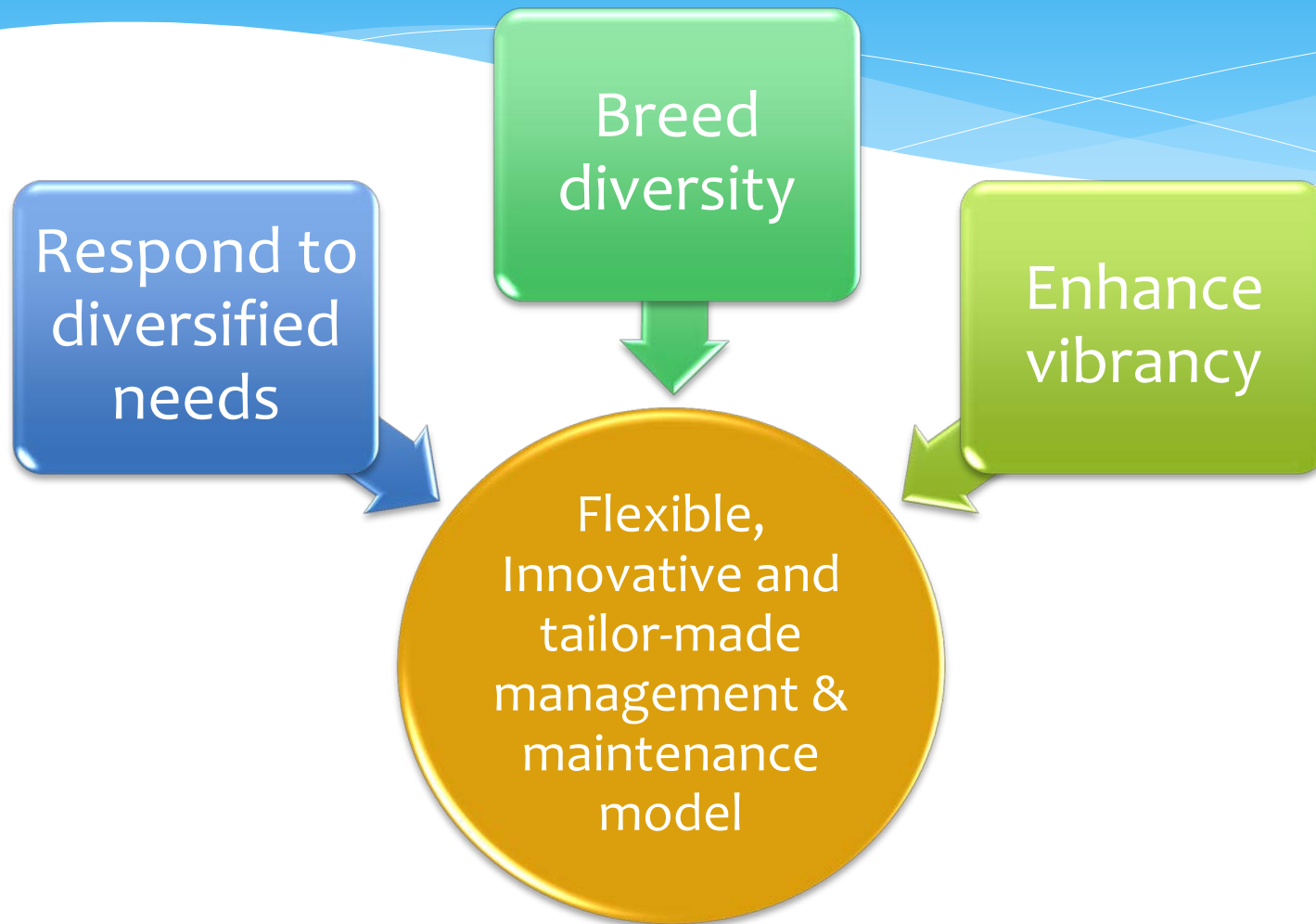


Consultancy Study on Suitable Model(s) for Managing and Maintaining the Harbourfront

Harbour Unit, Development Bureau
HC Meeting
25 June 2018


Objective




Scope of the Study

INCEPTION REPORT


Task 1 – Reviewing existing models
and understanding aspirations



Task 2 – Proposing suitable
model(s)



Task 3 – Devising management &
maintenance guidelines



Task 4 – Assessing legal, financial
and manpower implications

FINAL REPORT

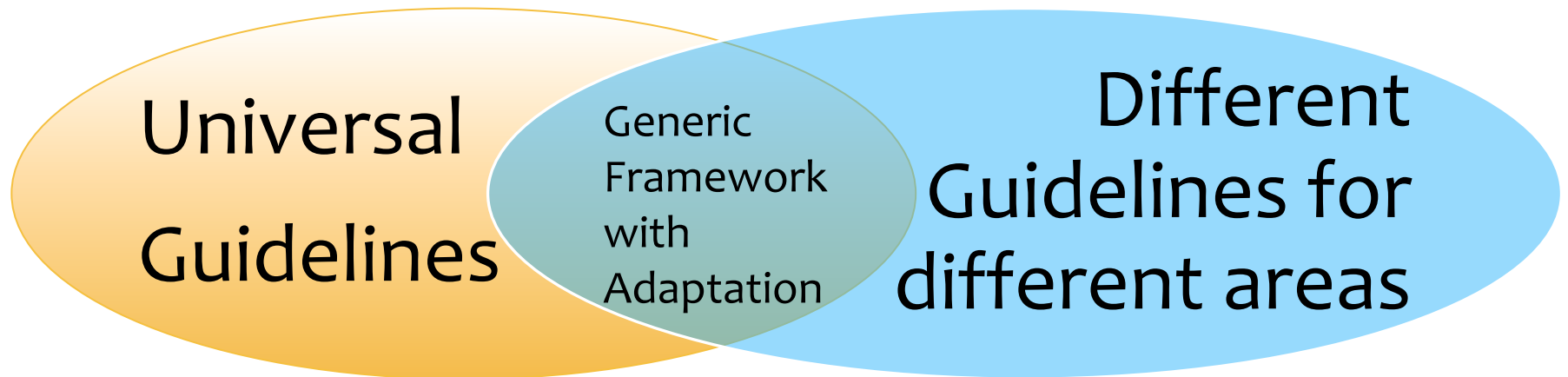
Task 1

- * Reviewing existing models
- * Understanding public aspirations



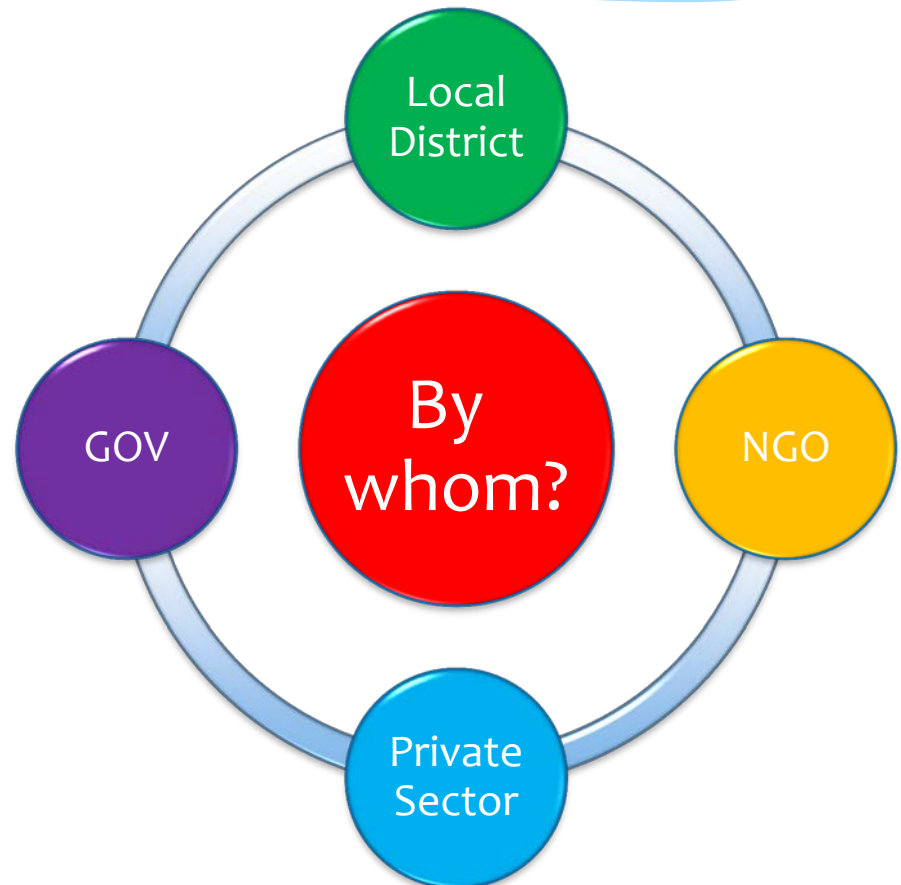
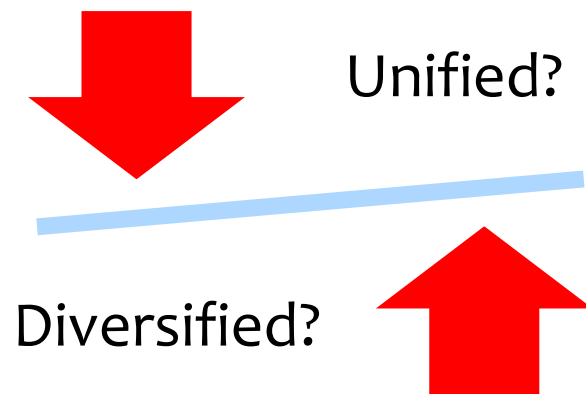
Task 2

- * Overseas research
- * Recommend suitable model(s)



Task 2 (con't)

- * Recommend suitable model(s) – Management agents



- * Interface between new guidelines and existing legislation/ rules/ guidelines



Task 4

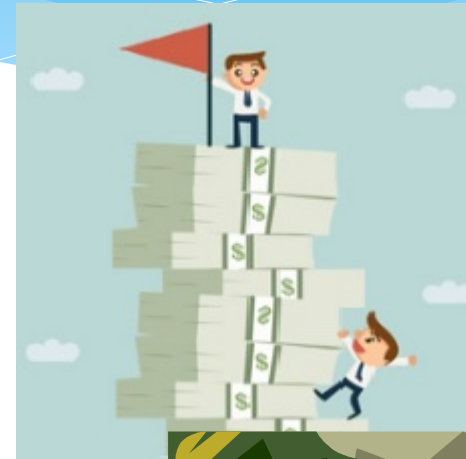
Assessing legal, financial and manpower implications

- * Legal assessment
 - * Legal basis of guidelines
 - * Enforcement agent(s)
- * Financial and manpower requirement
- * Timeline for implementation



Selection of Consultants

- * Technical and Fee proposals
- * Technical-wise
 - * Quality of proposals
 - * Past experience
 - * Approach and methodology
 - * Suitability & adequacy of manpower



Way Forward



- * Regular briefing and consultation of Members
- * Duration: 2 years

Thank you