

Activating the Wan Chai Waterfront

A stimulus presentation to the Harbourfront Commission
15 October 2012



Activating the Wan Chai Waterfront

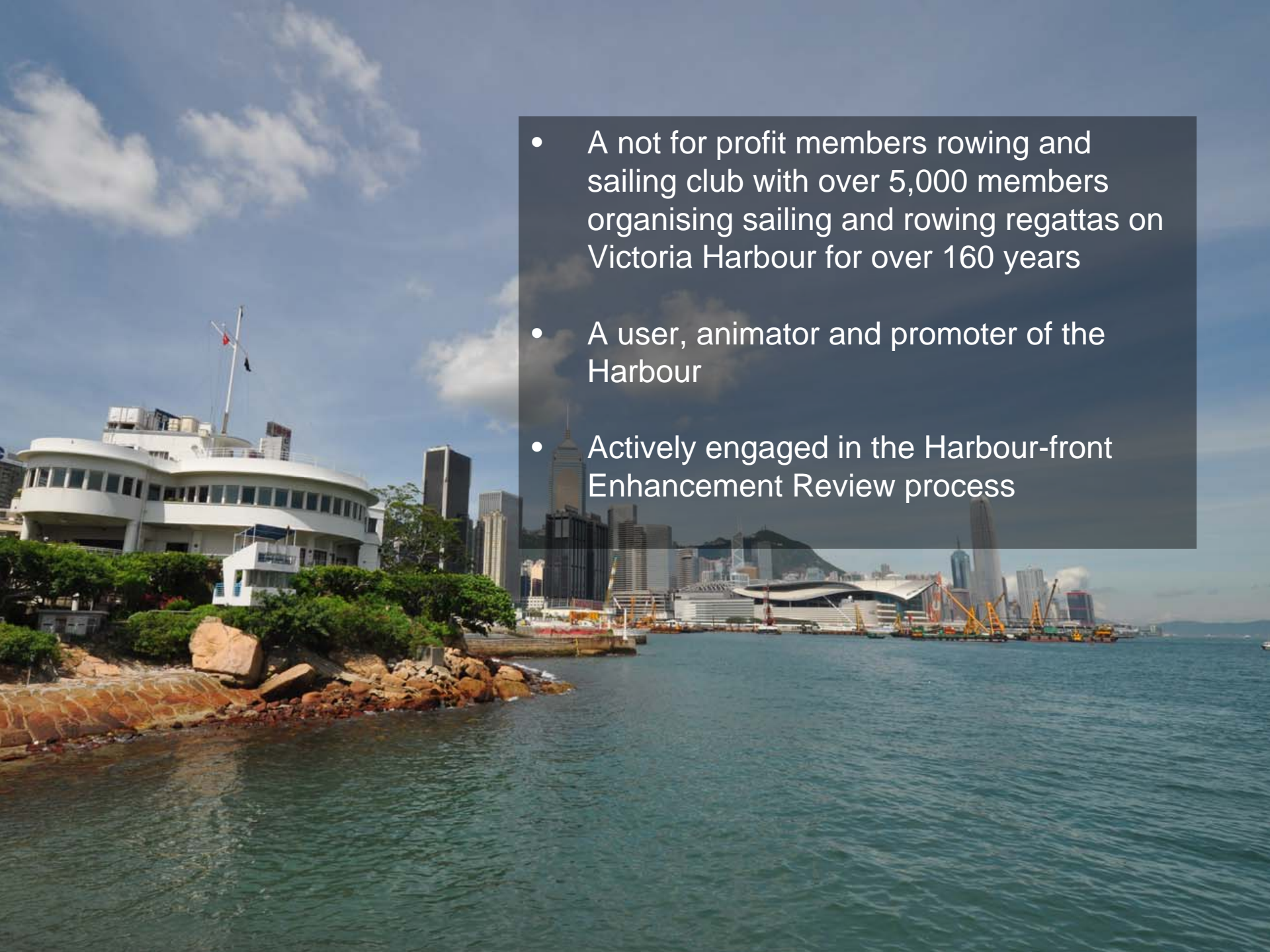
Town Planning Board 1999 Vision:

“To make Victoria Harbour attractive, vibrant, accessible and symbolic of Hong Kong - a harbour for the people and a harbour of life.”



RHKYC's vision:

for a public facility that can accommodate the staging of major events (sailing and other) in the Harbour together with developing an attractive destination and public space



- A not for profit members rowing and sailing club with over 5,000 members organising sailing and rowing regattas on Victoria Harbour for over 160 years
- A user, animator and promoter of the Harbour
- Actively engaged in the Harbour-front Enhancement Review process

Our Activities



Regular Racing in the Harbour



Offshore Yacht Racing



Around The Island Race



Host Major Events



RHKYC's Perspective



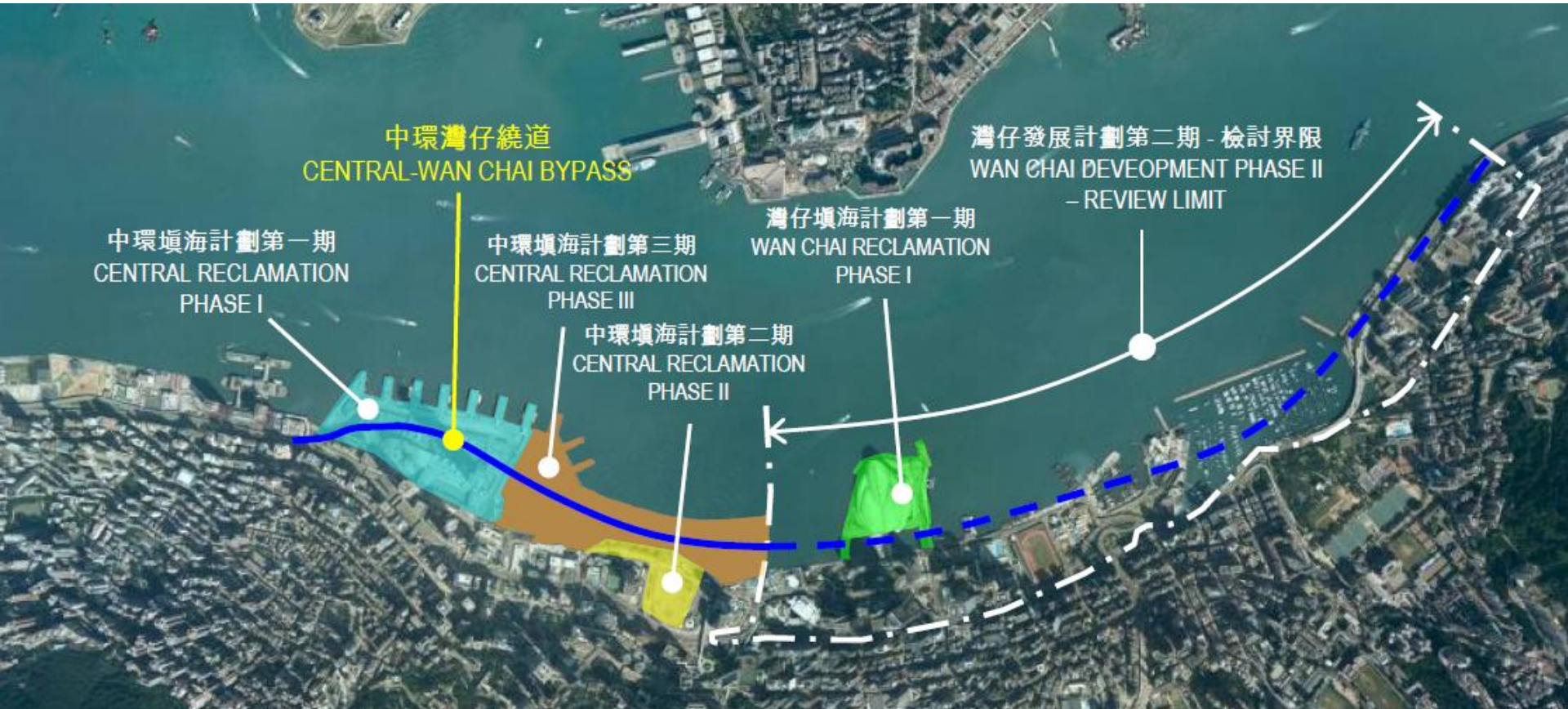
Objectives

Timely policy drive from the HC

Funding for a strategic master plan and feasibility studies



WDII and CWB



Target completion date for WDII and CWB civil works is first quarter of 2016.

Background

- Lengthy consultation engagement for current civil works
- Acknowledged need for positive legacy
- Basic zoning for Wan Chai waterfront has been outlined
- CEDD conceptual plans / artists impressions are in the public domain
- Now, specific projects need to be developed to deliver on stated government objectives



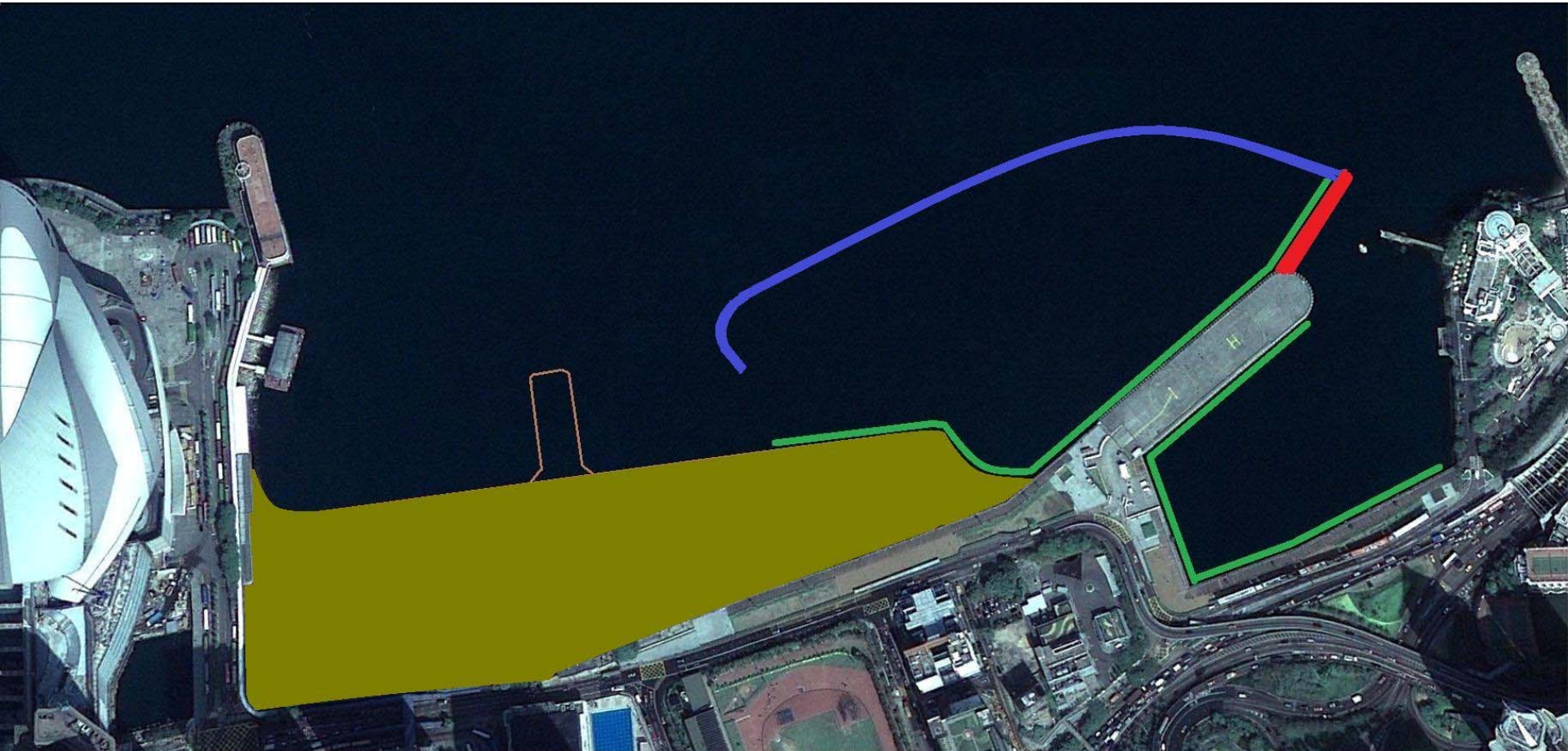
CEDD Visualisations – Risk and Opportunity








New Waterfront Profile at Completion of Civil Works



Practical Considerations



-  Permanent breakwater - required to make the existing basin Typhoon proof
-  Outline of new land created under CWB project - including proposed location for Wanchai Ferry Pier
-  Proposed wave attenuator - non-permanent moored floating breakwater to provide sheltered for visitor moorings
-  Floating pontoons - approx. 1,000 m
-  Permanent reclamation under WDII

Race / Event Village

Volvo Ocean Race, Galway, Ireland

the Race Village received upwards of 600,000 visits over a 10-day period



City Sailing Centre

Manhattan Sailing Centre, New York



Dragon Boats

Hong Kong Harbour



Heritage / Maritime Museum

National Maritime Museum, Sydney, Australia



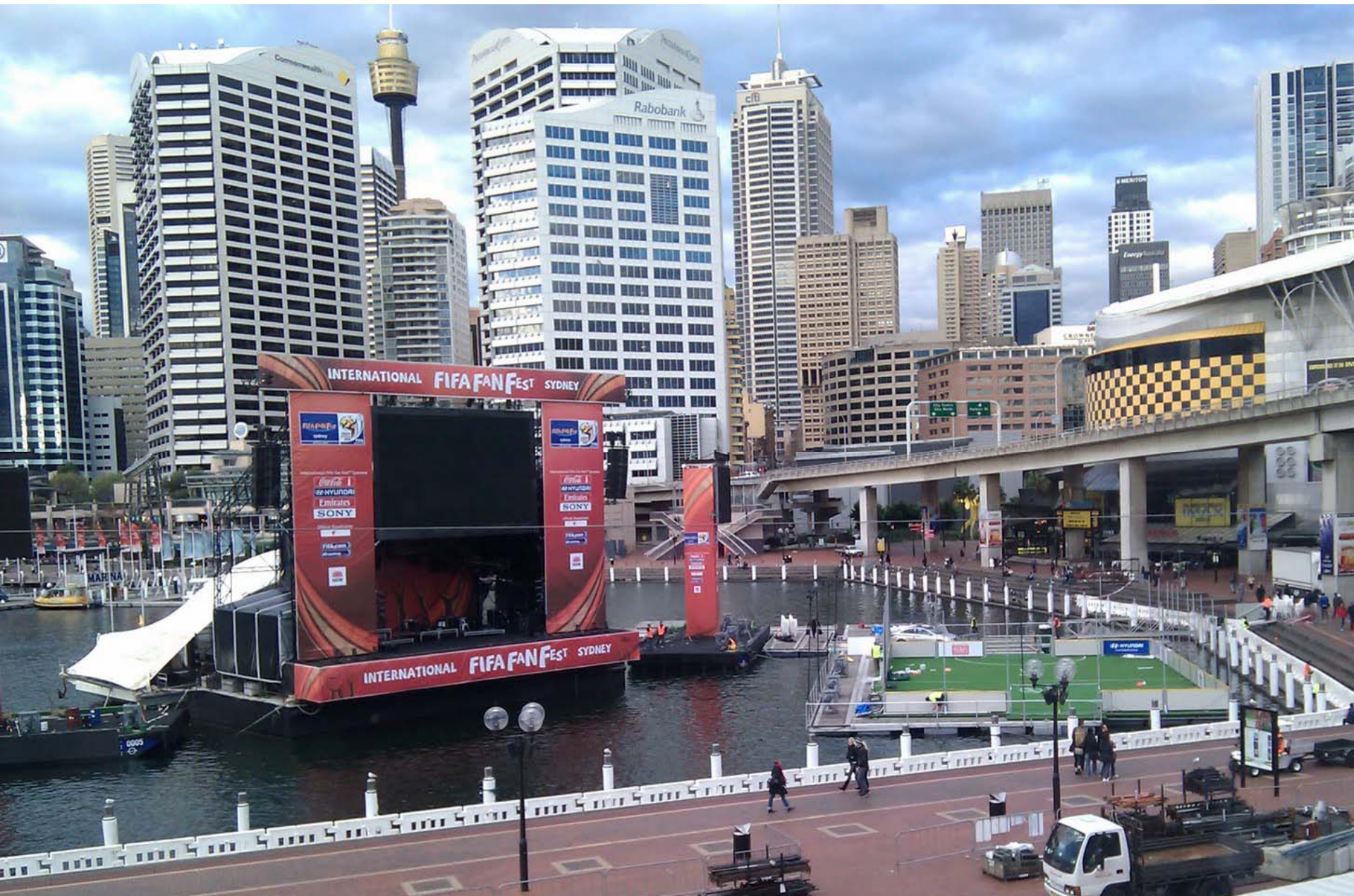
Water Taxi

Baltimore, USA



Floating Stage / Performance Venue

Darling Harbour, Sydney, Australia



International Boat Shows

Southampton, United Kingdom



Large Visiting Yachts

Artist's impression: 2013 America's Cup Race Village, San Francisco



Al Fresco / Harbourside Dining



Ex-PCWA

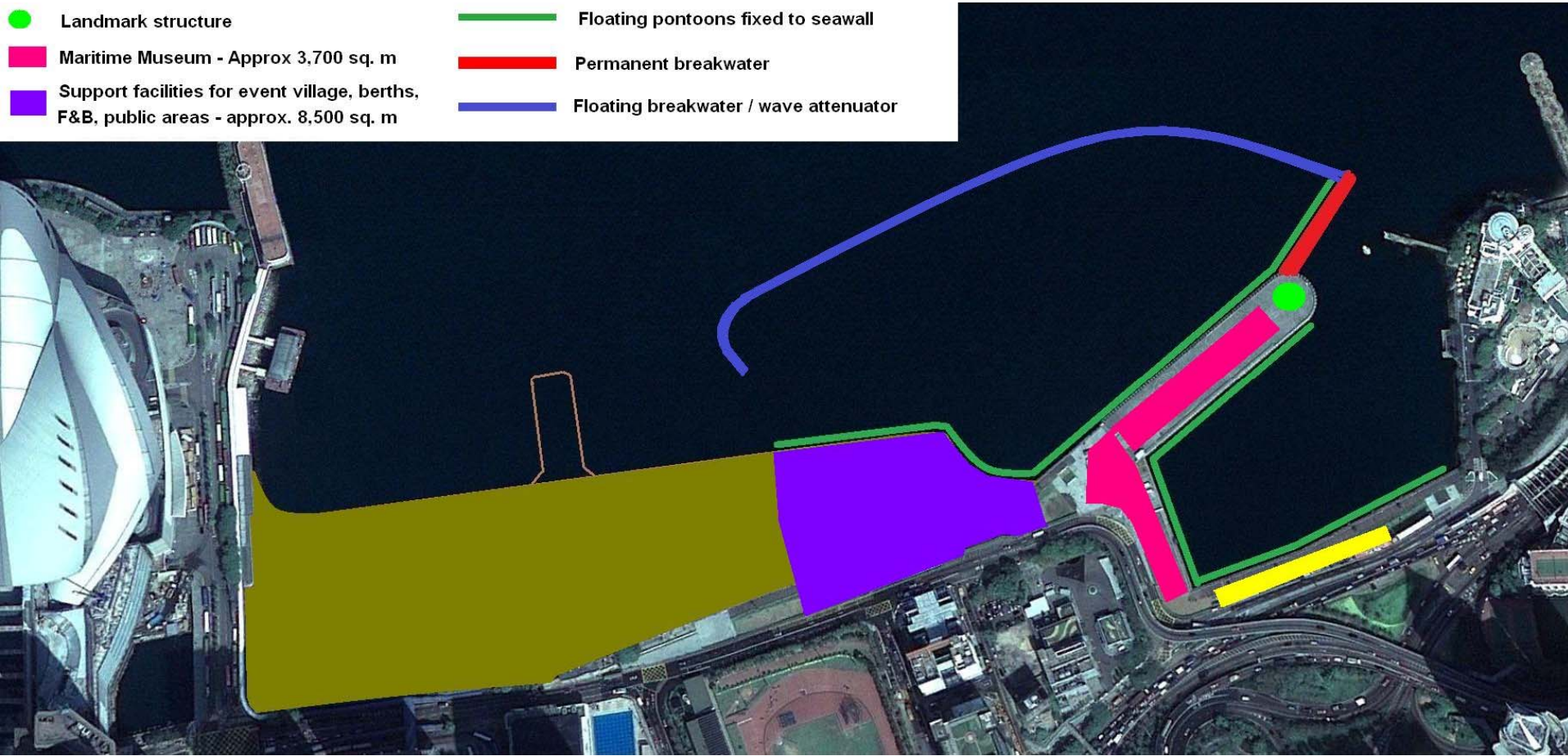
- Landmark structure
- Maritime Museum - Approx 3,700 sq. m
- Support facilities for event village, berths, F&B, public areas - approx. 8,500 sq. m
- Floating pontoons fixed to seawall
- Permanent breakwater
- Floating breakwater / wave attenuator



- Permanent breakwater
- Wave attenuation along dock wall
- Water depth / dredging
- Pontoons along sea wall – versatile
- Public landing space for water taxis and junks
- Any buildings designed with flat roofs suitable to be used for event set up when required

Wan Chai Waterfront

- Landmark structure
- Maritime Museum - Approx 3,700 sq. m
- Support facilities for event village, berths, F&B, public areas - approx. 8,500 sq. m
- Floating pontoons fixed to seawall
- Permanent breakwater
- Floating breakwater / wave attenuator




Wan Chai Waterfront Park – Integrated with the Ex-PCWA and incorporating a floating breakwater / wave attenuator, pontoons for large visiting yachts, public landing steps and shaded promenade, waterfront performance area, public space / park that is so designed to enable temporary overlay of an event village provisioned with appropriate infrastructure and access


Wave Attenuator – Sydney Harbour



Checking the Boxes

- Activating an important part of harbourfront
 - Local, regional and international benefits
 - Reconnecting Wan Chai to its waterfront
 - Destination of distinctive character and attraction
 - Providing a recreational and sporting resource
 - Deliverable and positive legacy
- 

Next Steps

- For HC to drive forward this opportunity
 - Funding from Government for Masterplan and Feasibility Study
 - Planning process, public engagement
 - Enabling works phased to link with the current civil projects
- 

Thank You



土木工程拓展署



CIVIL ENGINEERING AND
DEVELOPMENT DEPARTMENT

☎ 2845 3993

J8

文
Herit

Activating the Wan Chai Waterfront

“To make Victoria Harbour attractive, vibrant, accessible and symbolic of Hong Kong - a harbour for the people and a harbour of life.”

