



Crowd Management

Public Events

Types

- Festivals
- Meetings/
Procession
- Sports events



Policies and Guidelines

- To facilitate Public Events
- To maintain Public Safety and Public Order
- To strike a balance between the Rights of Assembly and the Broader Interest of the Community
- To protect the Safety of the Participants, Members of the Public, and Police Officers



Policies and Guidelines

In discharging our crowd management responsibilities we must be completely impartial.



Avoid

- Public Safety being endangered
- Public Peace being breached
- Traffic being Seriously Obstructed
- Conflict between Participants and others



The Notification of holding Public Events

- Purpose
- Date / Time / Venue
- Routes
- Estimated Number of Participants



Risk Assessment Process

- Entrances and Exits of the Venue
- Starting and Finishing Points
- Route
- Mood
- Purpose/ Nature
- Venue



Restriction on the Venue

- **Gathering of People and Vehicles**
- **Disturbance / Obstruction**
 - Usual Business/ commercial activities
- **Rights of Others**
 - Passer-by
 - Private property / commercial profits



To Balance

Freedom of Expression

Public Safety /
Public Order

Inconvenience
to the Public



Manpower Deployment

➤ Adequate Police Resources

- Crowd and Traffic Management

 - (UB, PTU, Crime, Traffic, female officers)

- Maintain Public Peace and Public Order

➤ EVA and Escort



Functions of the OPS Wing in Large-scale Event

- To Coordinate Public Events across Regions
- To Coordinate the route, manpower deployment, contacts and communication
- To Assist Organizer and Impose Conditions





Crowd Management At Waterfront Promenade And Tamar Park



Factors for consideration in Crowd Management

➤ SAFETY

- Geographical set-up
- Choke points
- Gradient
- Obstacles
- Works
- Weather

Walk-through

Risk Assessment

Mitigation



Crowd Management Measures

- Safe Capacity
- Sectorization
- Buffer Zone
- Police Passage/Emergency Vehicle Access (EVA)
- One-way Flow
- Tidal Flow
- Access Control
- Communication / Public Announcement (PA)
- Spontaneous Police Action



Promenade Development Plan

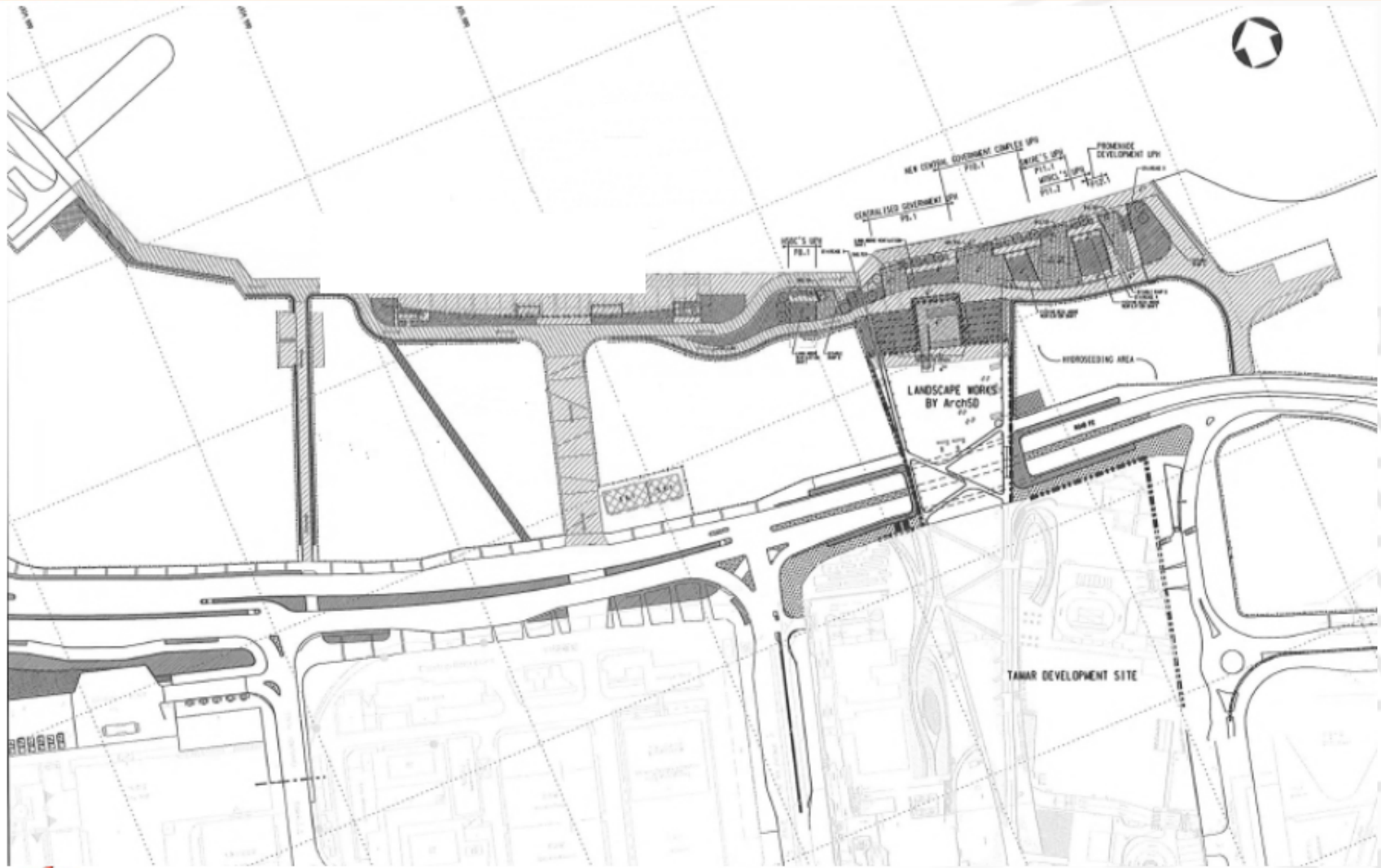


維多利亞港

Victoria Harbour



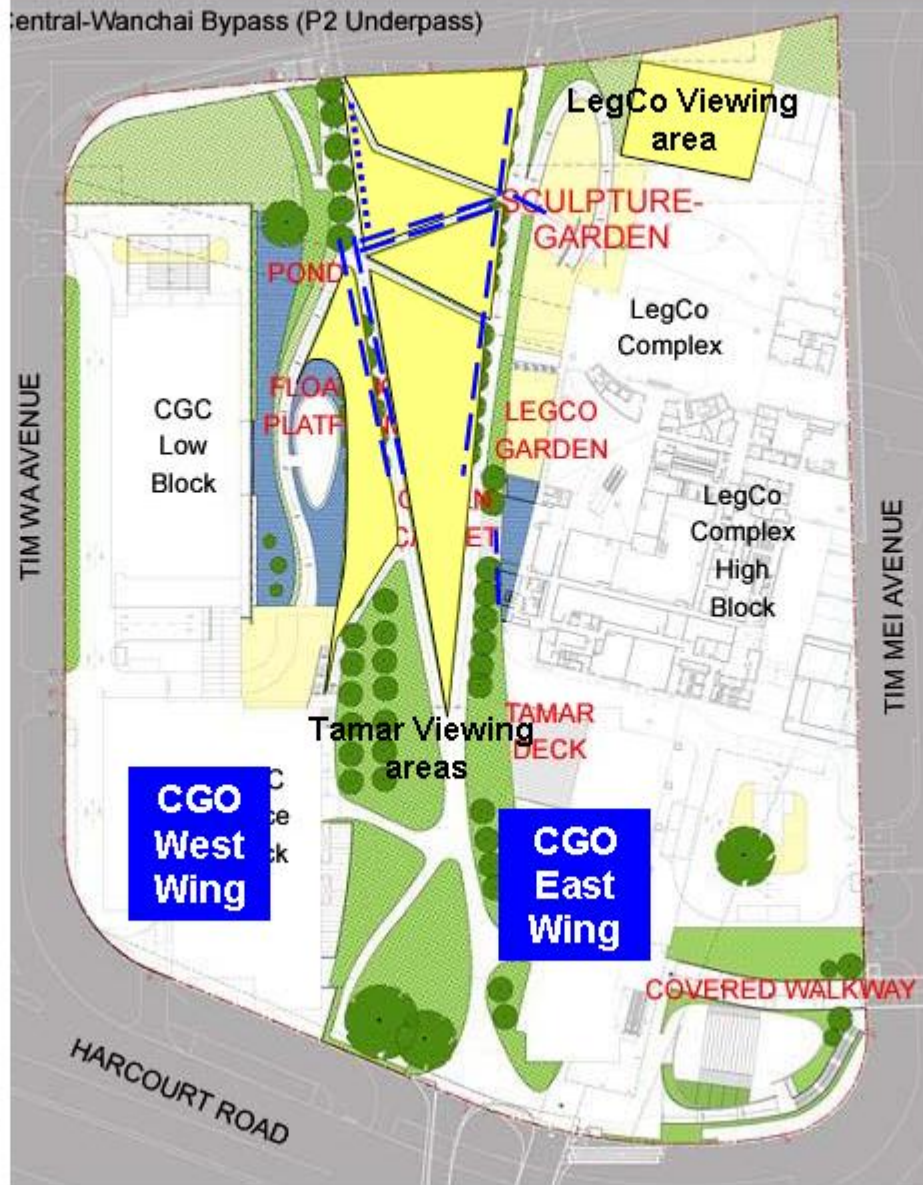
Waterfront Promenade by 2012



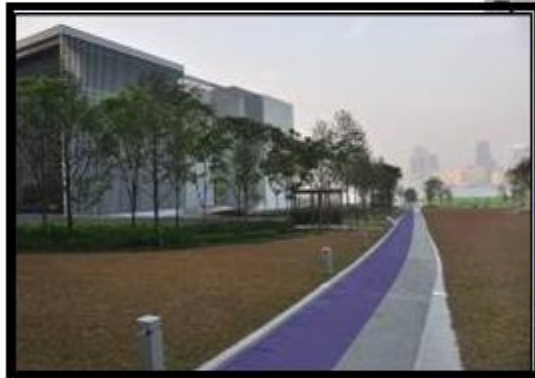
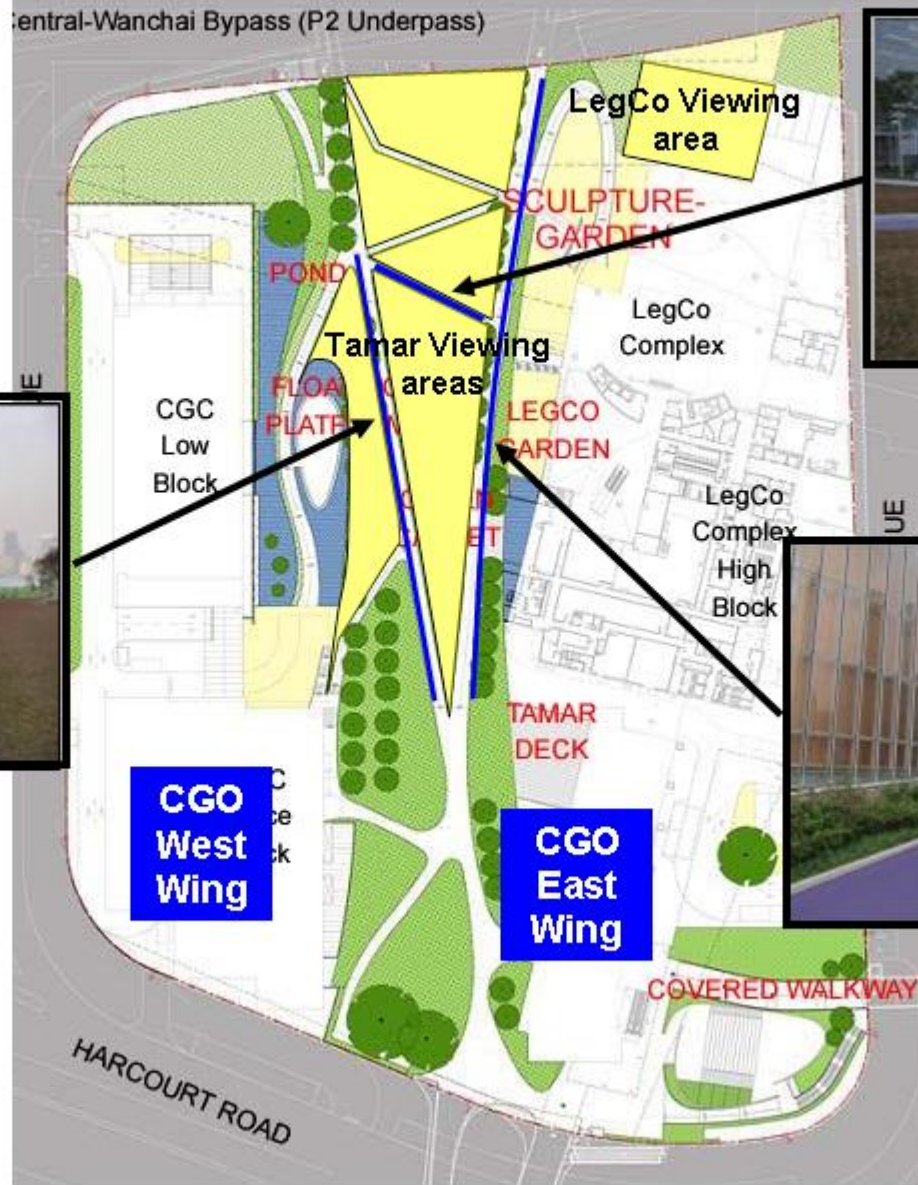
Management of Festive Crowd At Tamar Park (Fireworks Display 2012)



Sectorization by Mills Barriers



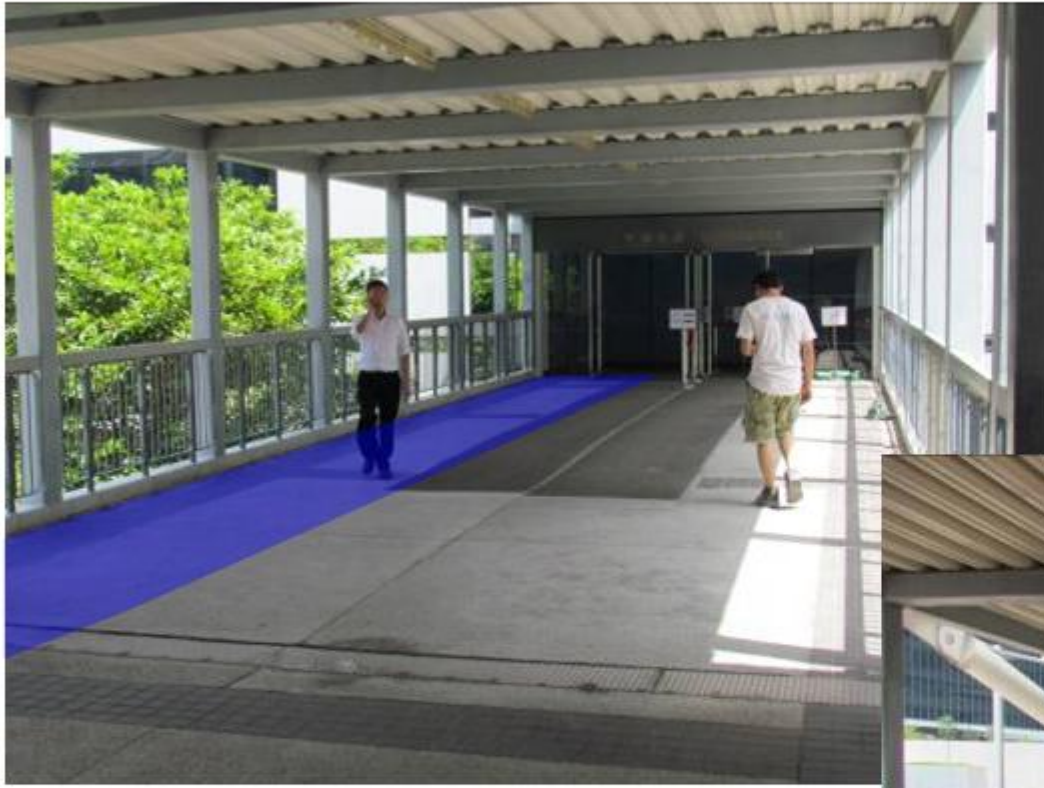
Set up of Police Passage



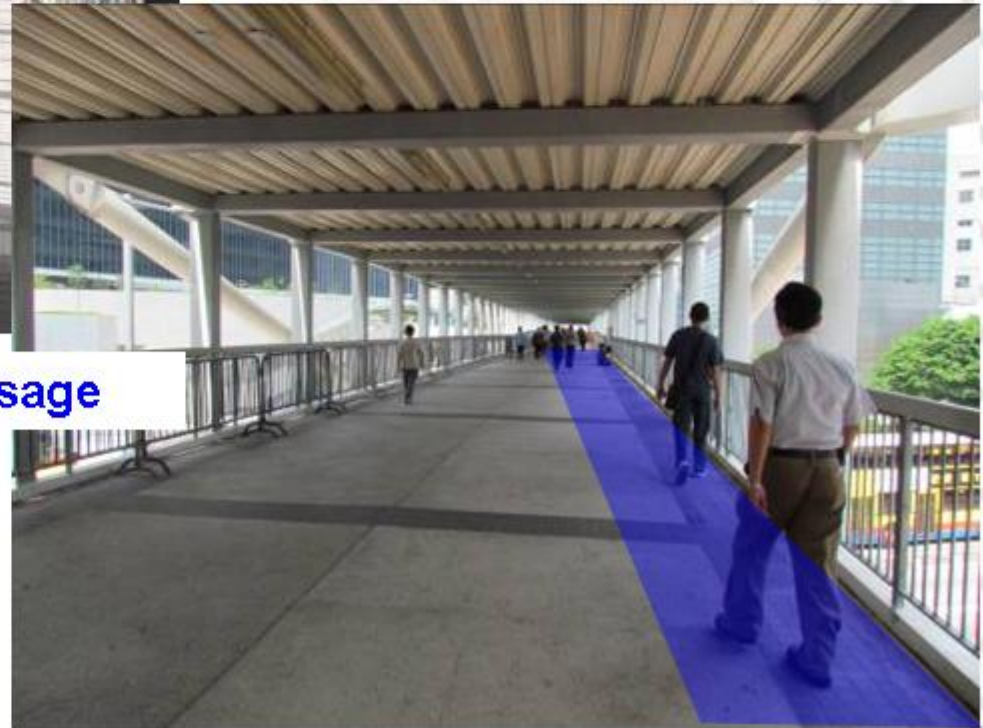
Access Control



Control measures Enroute



Citic Tower Footbridge Police Passage



Set up of Emergency Vehicle Access (EVA)

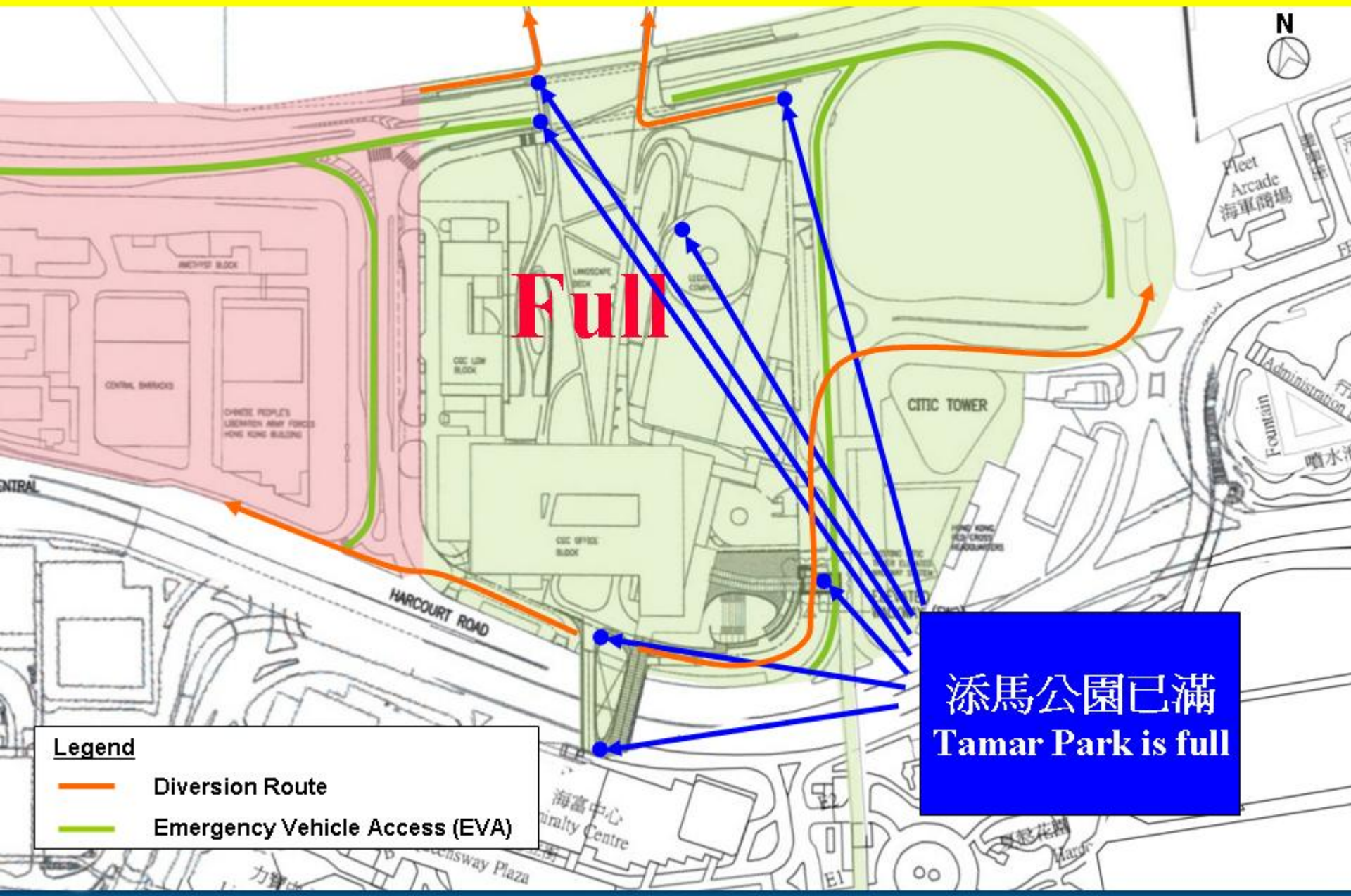


EVA at Lung Wo Road
near Lung Wui Road

EVA at Tim Mei Avenue



Diversion – Viewing Zone Filled Up



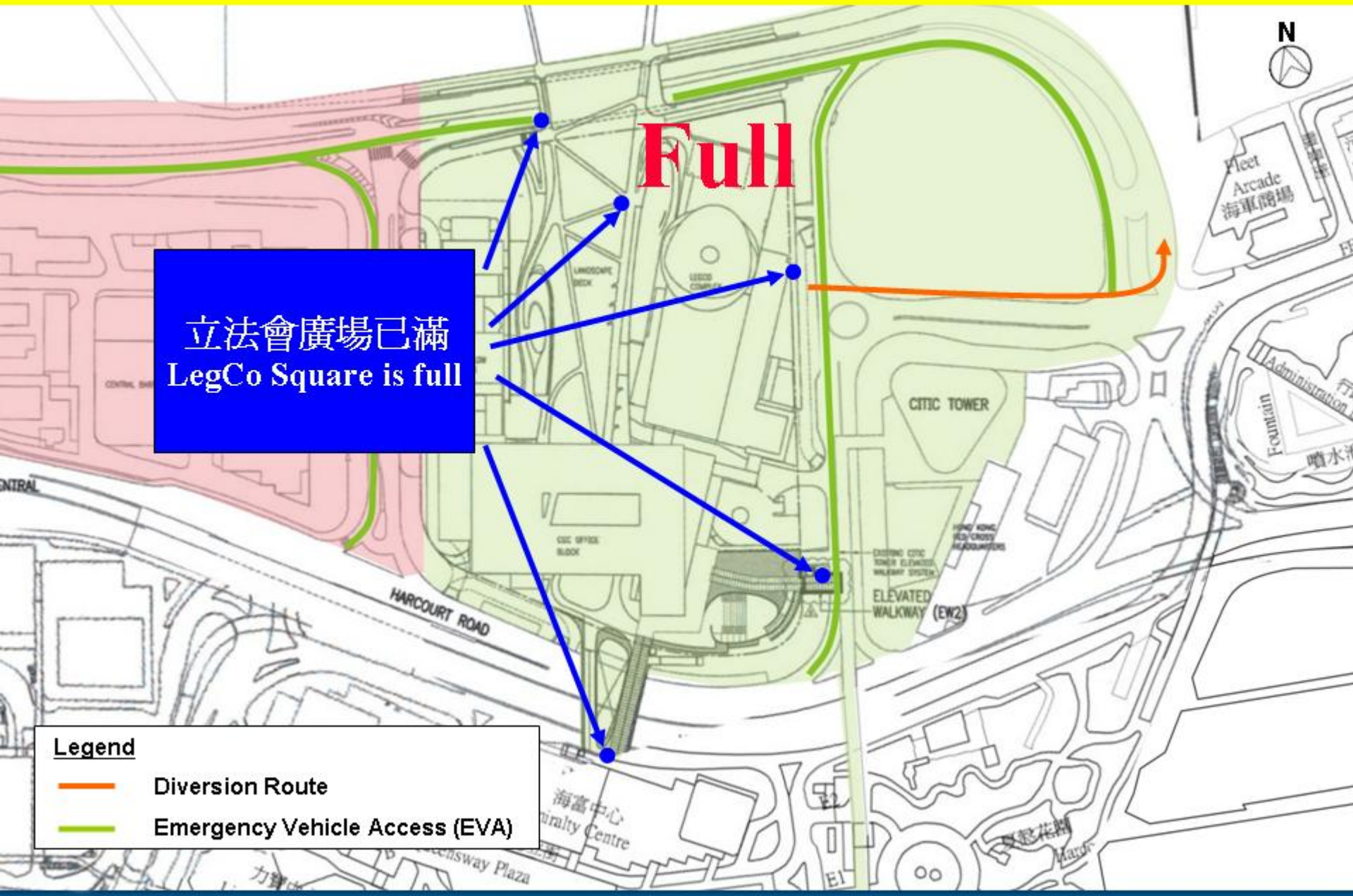
Full

添馬公園已滿
Tamar Park is full

Legend

- Diversion Route
- Emergency Vehicle Access (EVA)

Diversion – Viewing Zone Filled Up



立法會廣場已滿
LegCo Square is full

Full

Legend

- Diversion Route
- Emergency Vehicle Access (EVA)

2012 Lunar New Year Fireworks Display

Set up of police passages



香港警務處

2012 Lunar New Year Fireworks Display

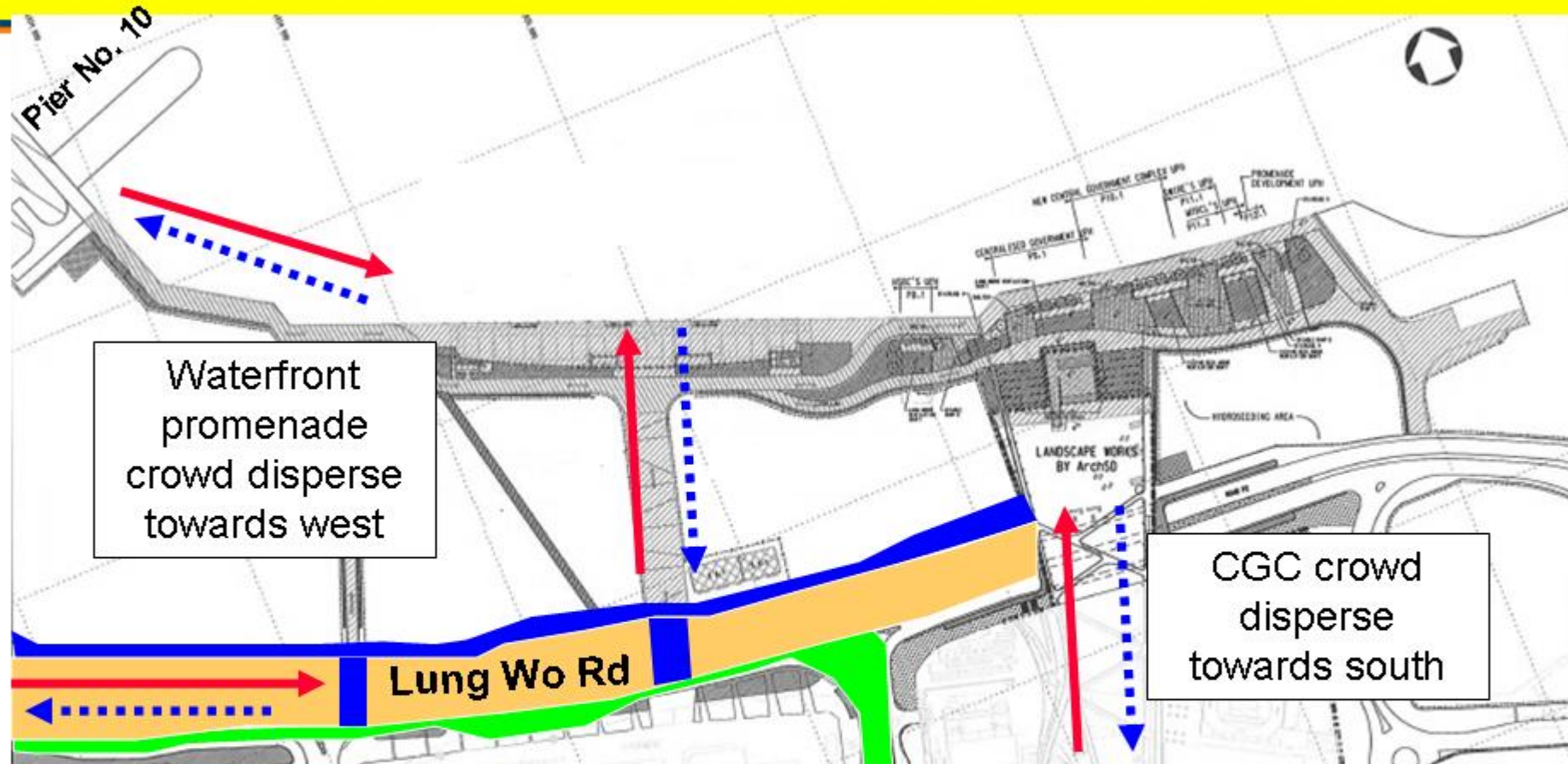
Tamar Viewing Area (Down-slope)








Crowd Management - Waterfront Promenade



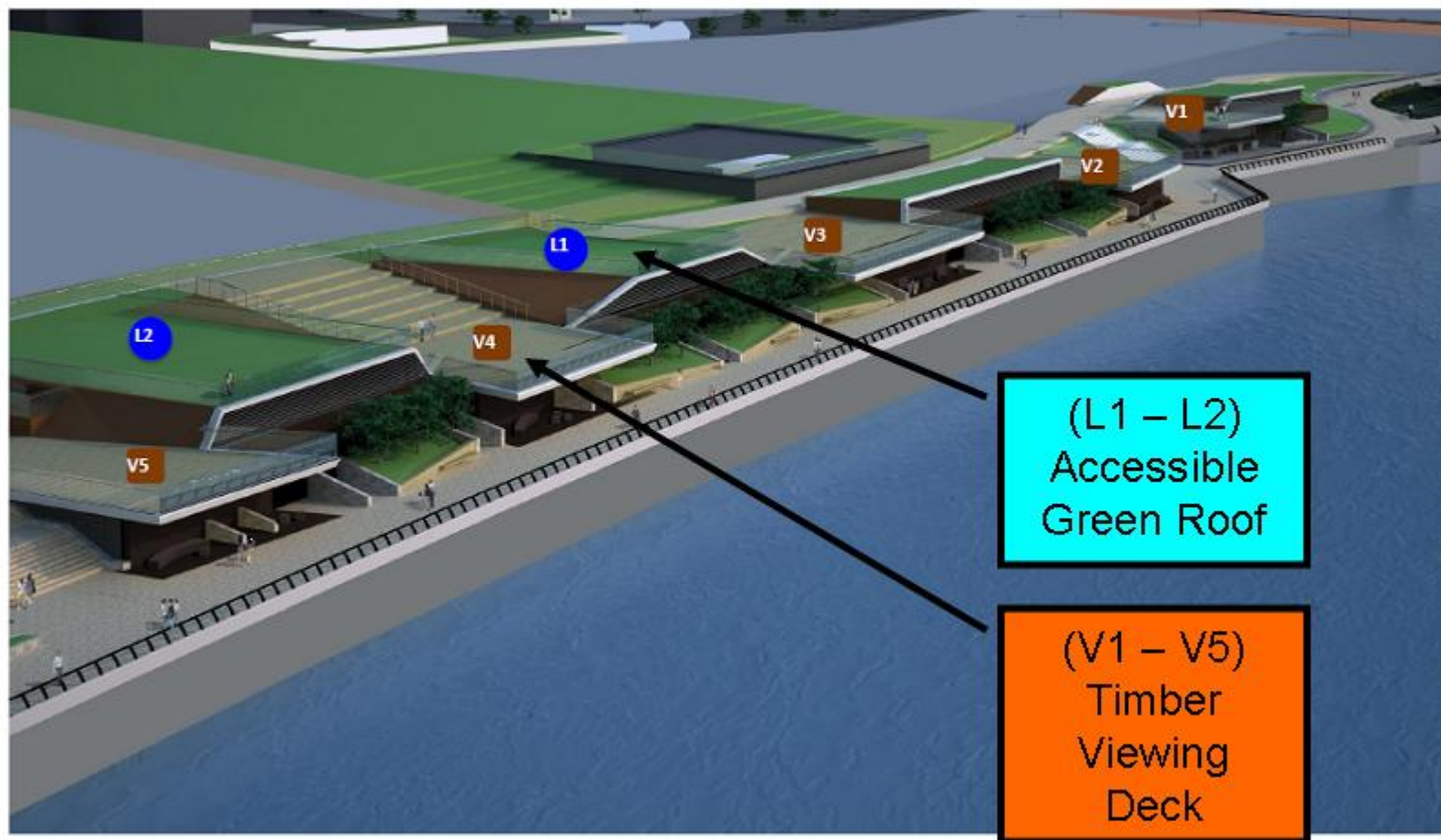
Crowd Control at Waterfront Promenade



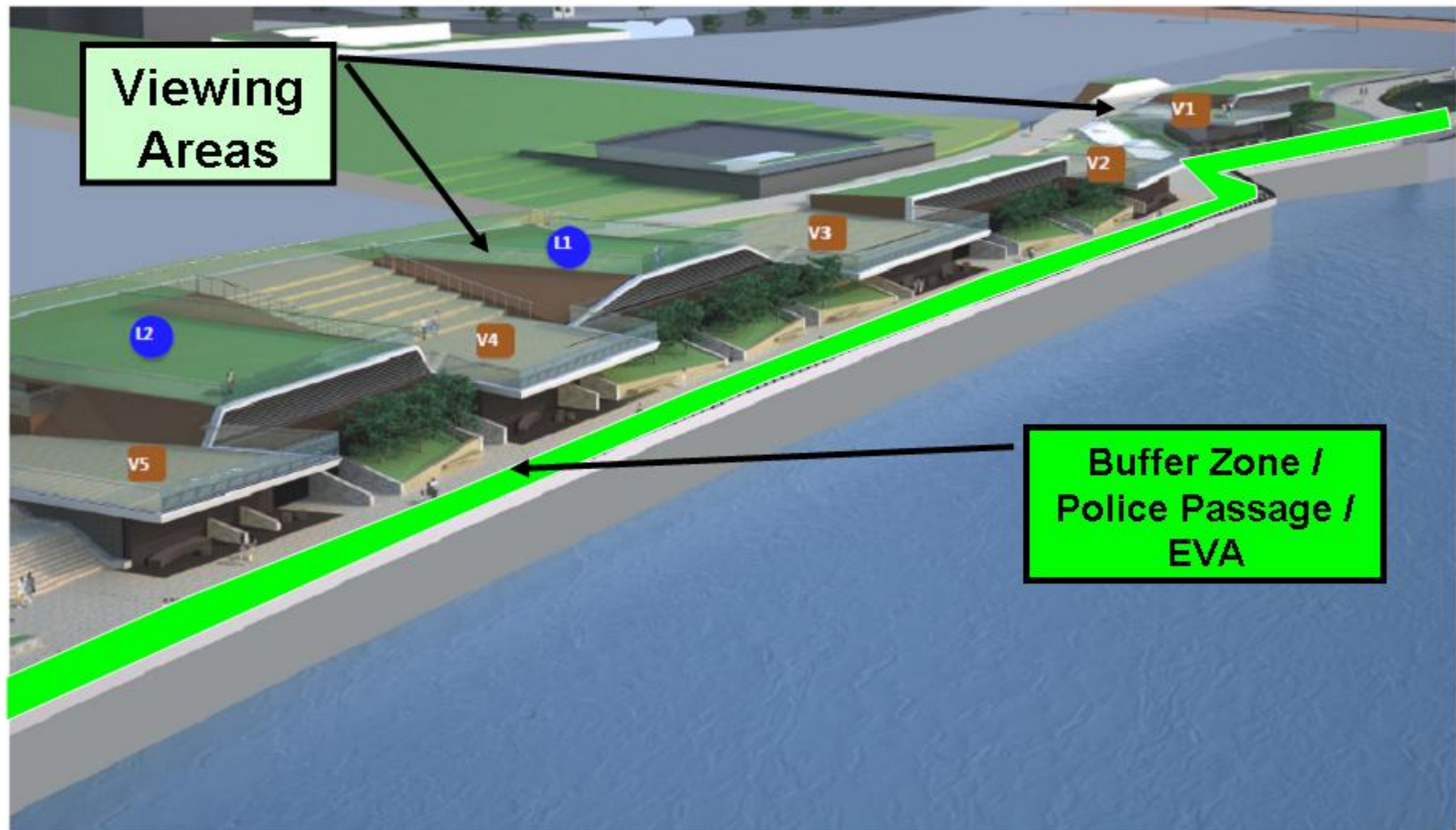
Legends:

-  Police Passages and Buffer Zones along Lung Wo Road
-  Viewing Zones along Lung Wo Road
-  Emergency Vehicle Access (EVA) at Westbound Lung Wo Rd and Tim Wa Ave
-  Arrival Route
-  Departure Route

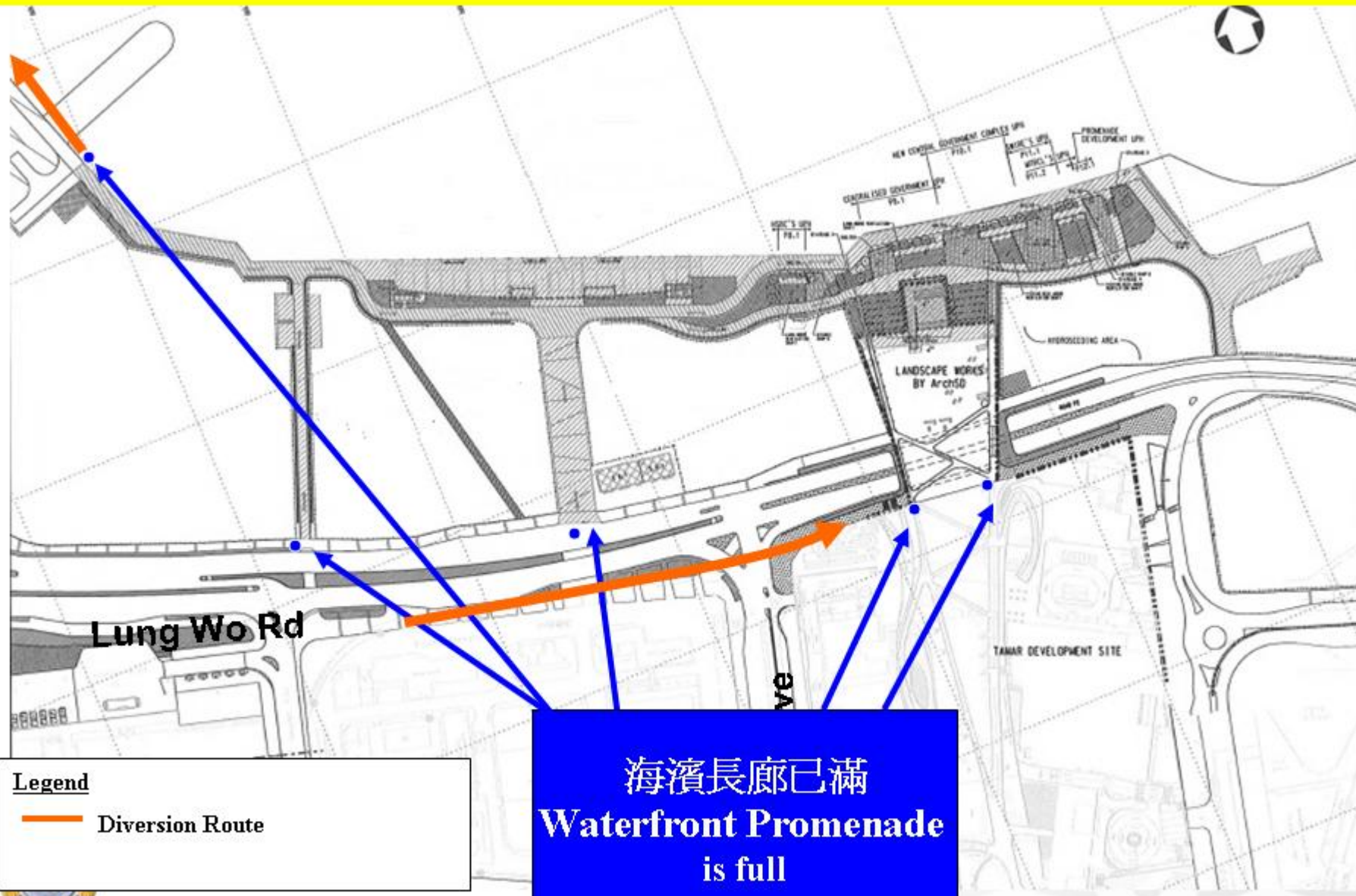
Viewing Areas



Set up of Buffer Zones / Police Passages



Diversion



- END -

