

Port of Hong Kong

Commercial Port Operations & Facilities in Victoria Harbour



- Marine department responsible to support the dynamic port.
- Also a member of HC - committed to contribute to HfC's vision on development of a vibrant harbour front.
- Look forward to our participation in the creation of the **Harbour of the future for the benefits of the community, business sector and port operators.**

This Presentation

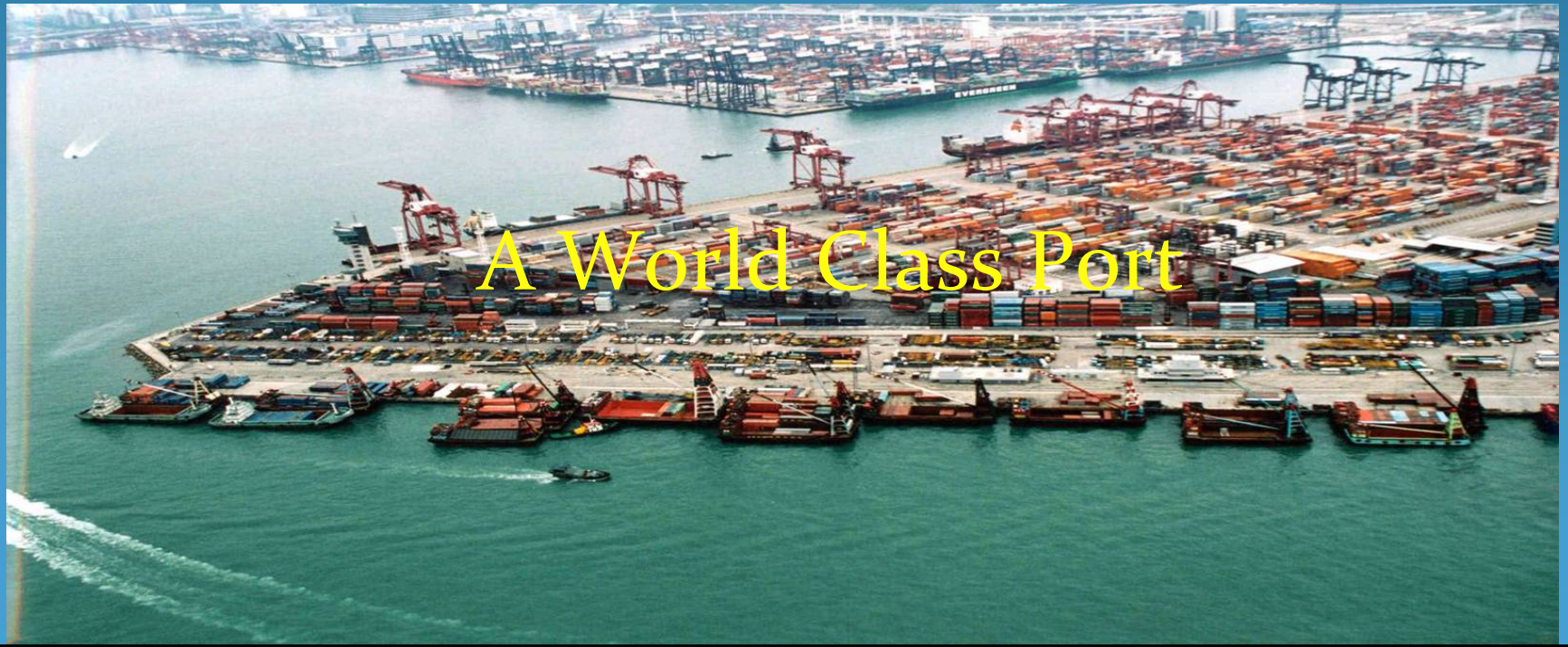
- The port of Hong Kong
- Core port operations & facilities
- Management of the port operations & ship movements
- Supporting services needed for the port
- Other port activities

1900

Sheltered anchorage & safe haven for ships



Today



A World Class Port

The Commercial Port

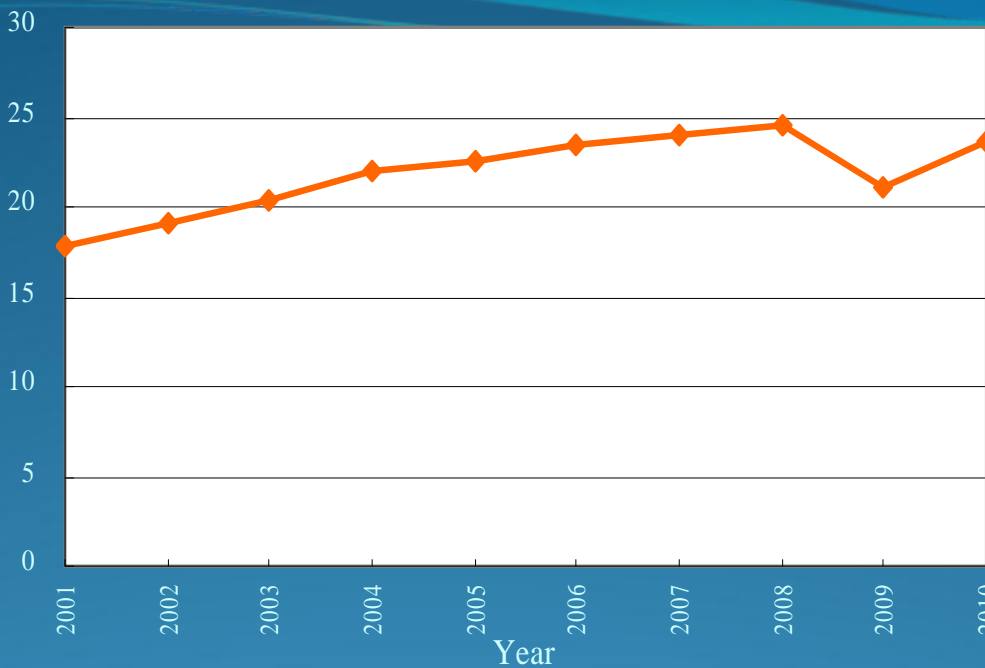
- Key Component in Trading & Logistics Sector
 - one of Hong Kong's 4 Key Economic Pillars
 - 90% (268 Million Tonnes) of Hong Kong's cargo
 - 23.7 Million TEU Containers
 - 26.7 Million Passengers
- \$21 Billion (1.4%) of Hong Kong's GDP
- 108,000 Jobs (3%) of Hong Kong's Total Employment

Port Cargo Forecast

- Government carries out periodic forecast of port cargo throughput
- Forecast completed in 2008 anticipated 2% - 5% annual growth rate
- Forecast being updated (completing in June 2013)

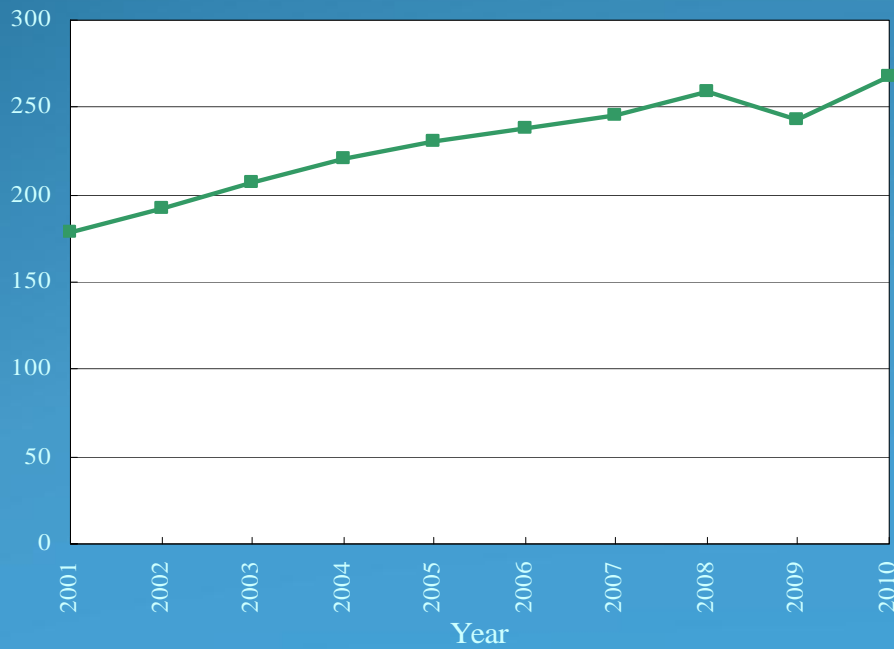
Container Throughput

Mn TEUs



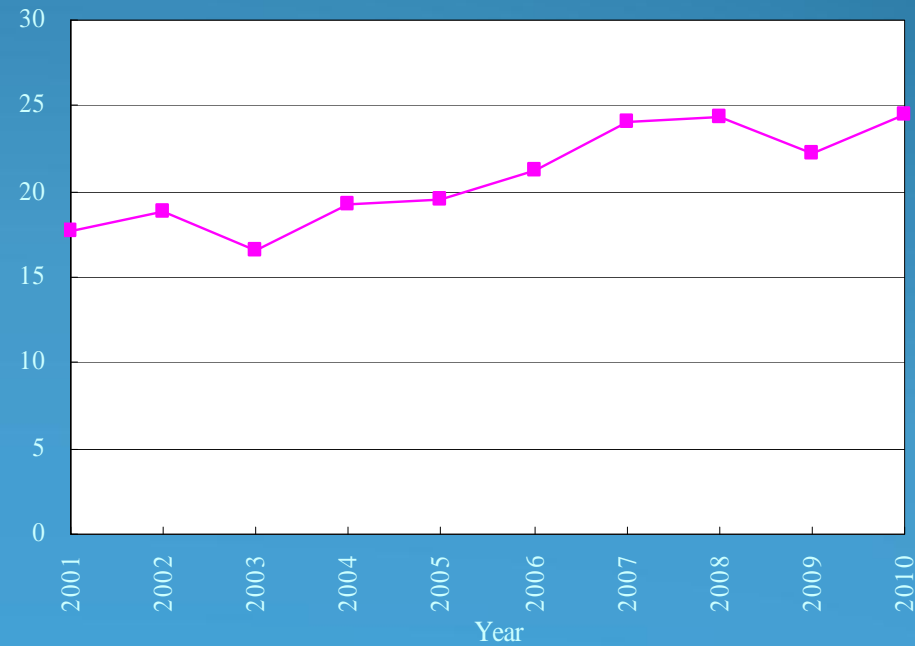
Cargo Throughput

Mn Tonnes

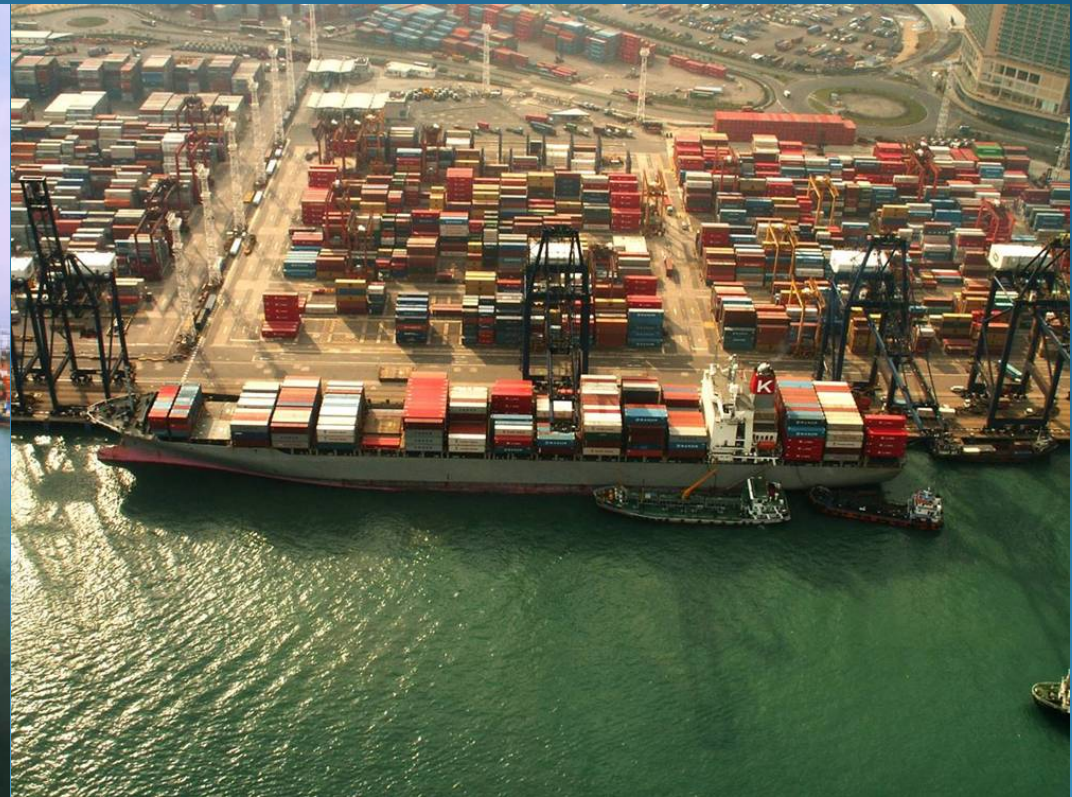


Passenger Throughput of Marine Ferry Terminals

Mn



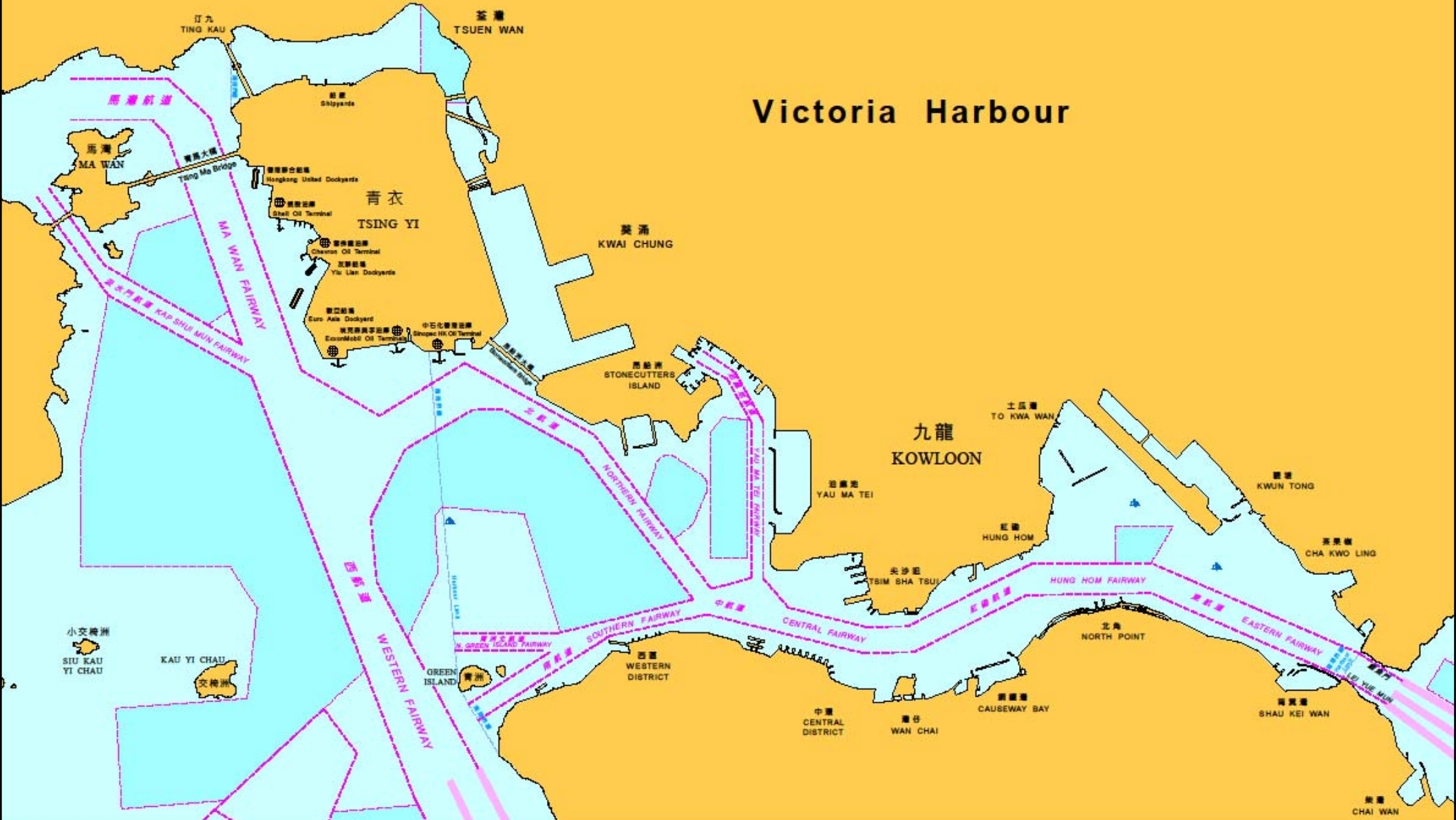
Container Ship Operations



Mid-Stream Operations



Victoria Harbour



Managing the Port Operations

- Specifying Uses of Sea Areas
 - *Traffic Separation Schemes*
 - *Fairways*
 - *Prohibited/Restricted Areas*
 - *Anchorage*
- Controlling Vessel Movements
 - *Vessel Traffic Centre*
 - *Kwai Chung marine Traffic Control Station*
- Harbour Patrol Services

Controlling Vessel Traffic Movements



Vessel Traffic Centre



*Kwai Chung
Control Station*



Harbour Patrol Services

Supporting Services & Facilities

- River Trade Vessels

- *179,168 river trade vessel arrivals in 2010*



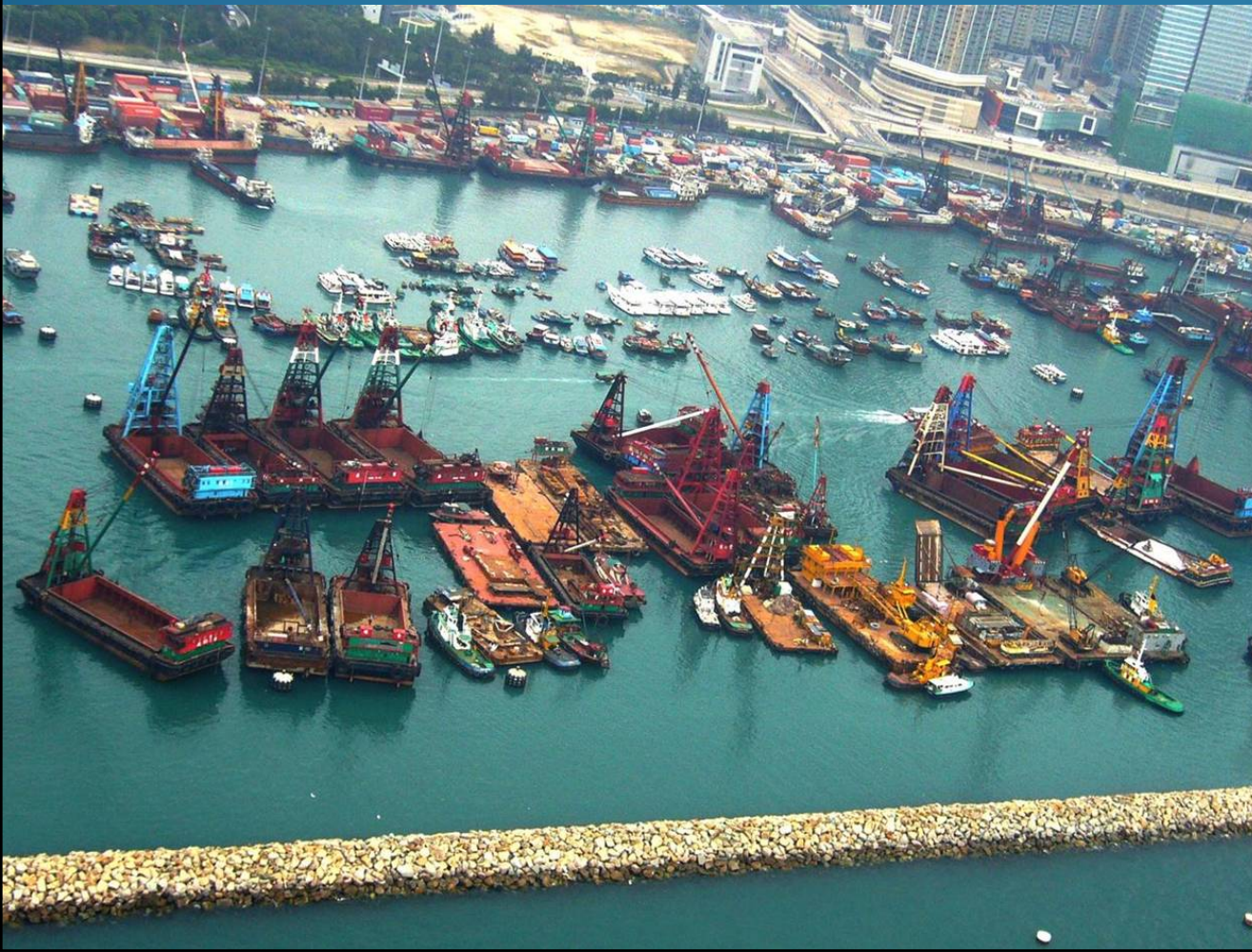
Supporting Services & Facilities

- Public Cargo Working Areas
 - 8 PCWAs \Rightarrow 2 being closed



Supporting Services & Facilities

- Typhoon Shelters
 - *7 Typhoon Shelters in Victoria Harbour*



Other Port Activities & Facilities



Vibrant Harbour

***A maritime and logistics hub
for the safe and efficient
passage of people and goods,
and a cultural and leisure
facility.***





Conclusion

- The challenge we are facing in Hong Kong not new. **Together** we want to learn from approaches in other parts of the world.
- The working port not only **coexists**, but also contributes to a successful harbourfront redevelopment.
- Collaborative dialog to balance port, economic and community interests for the benefit of Hong Kong.

Thank You !