

1st Harbourfront Commission Meeting

Kai Tak Development
Progress Update

by
Kai Tak Office

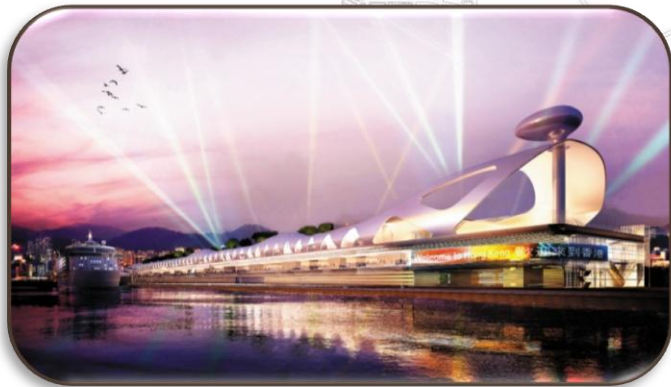
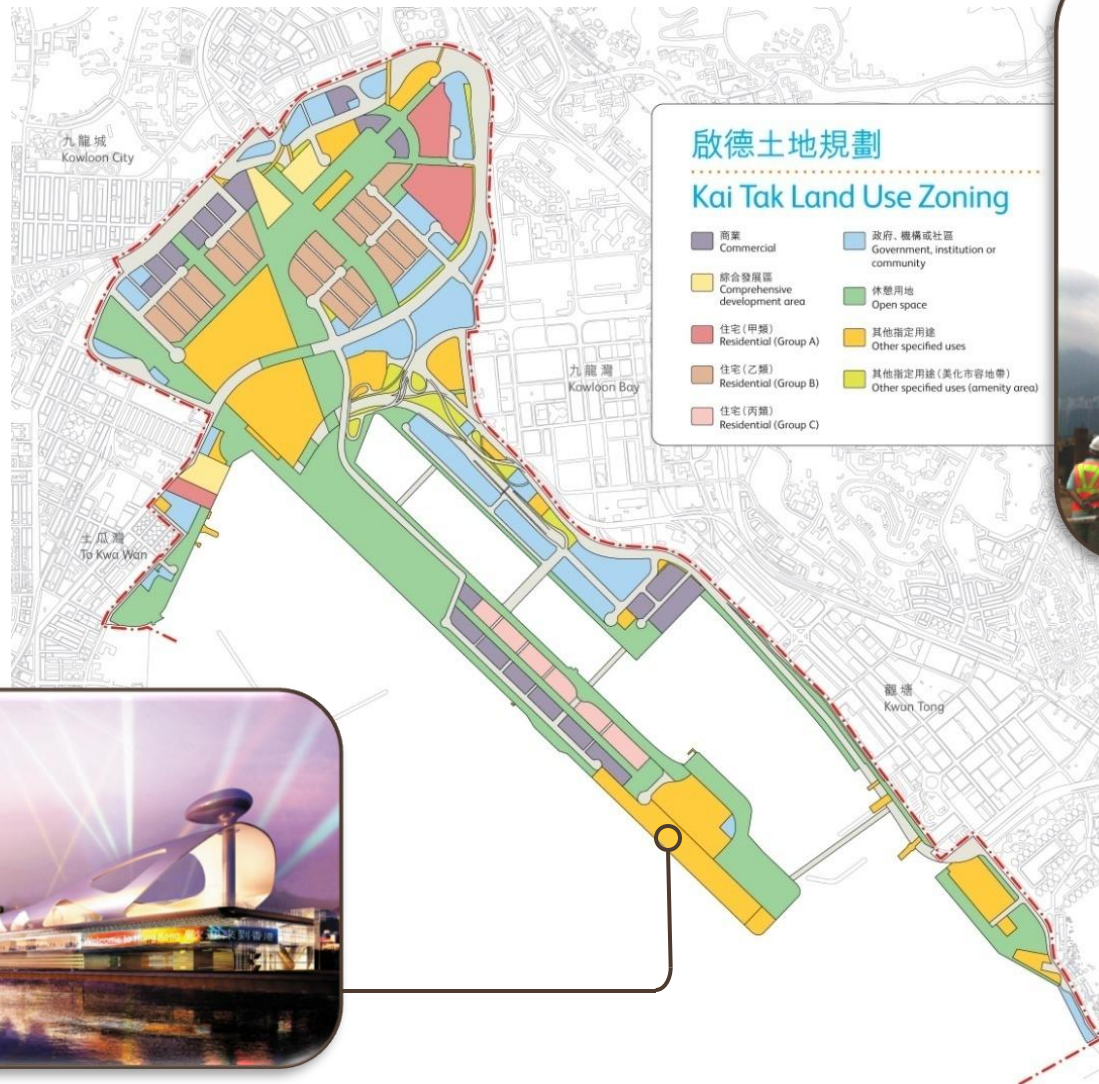
21 July 2010

Planning Vision

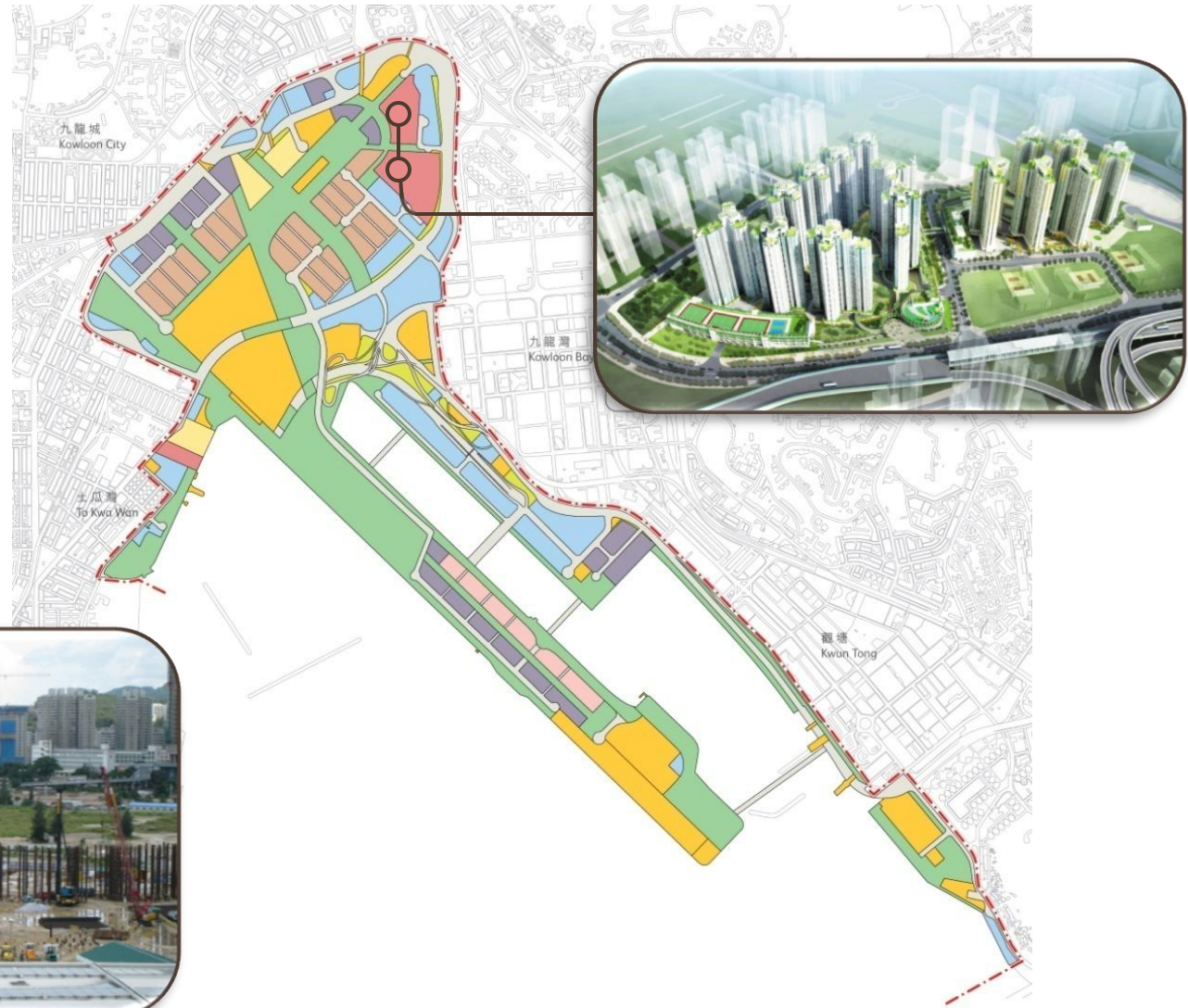


Vision - “A Distinguished, Vibrant, Attractive and People-oriented Kai Tak by Victoria Harbour”

Cruise Terminal



Public Rental Housing Development



Lung Tsun Stone Bridge Remains

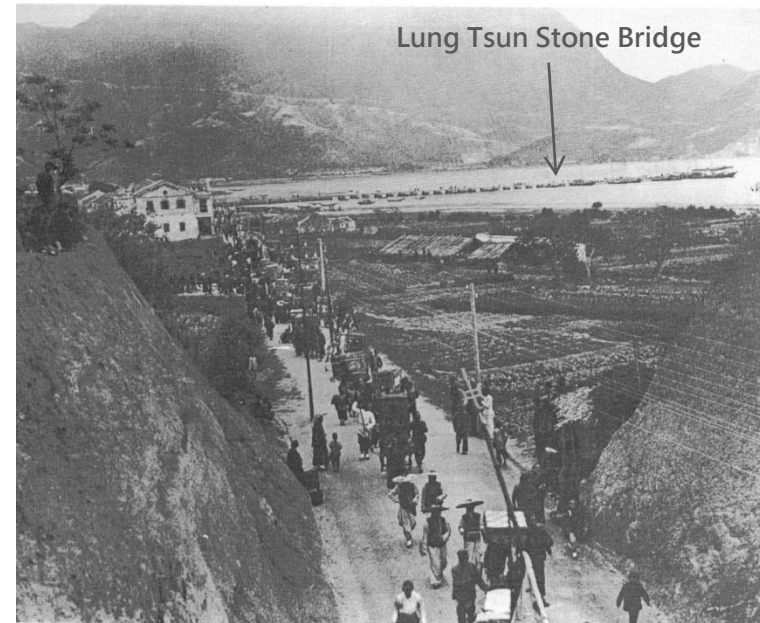


Lung Tsun Stone Bridge Remains



Lung Tsun Stone Bridge - Preservation

- On-site preservation
- Convenient access to echo with historical transport node and activity place
- Connection with cultural heritage resources to promote knowledge in local history



Lung Tsun Stone Bridge - Public Engagement

Stage 1: Understanding Concerns and Envisioning

- ◆ Consultations with Wong Tai Sin District Council, Kowloon City District Council, Town Planning Board and Antiquities Advisory Board since May 2010
- ◆ Community Envisioning Workshops held on 19 June and 26 June 2010

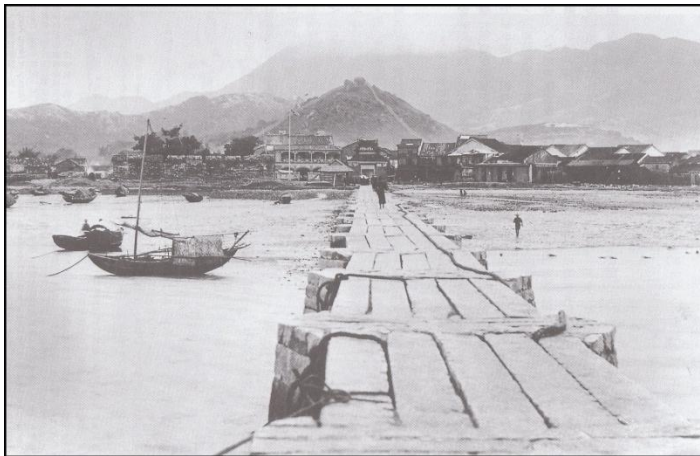


Lung Tsun Stone Bridge - Public Engagement

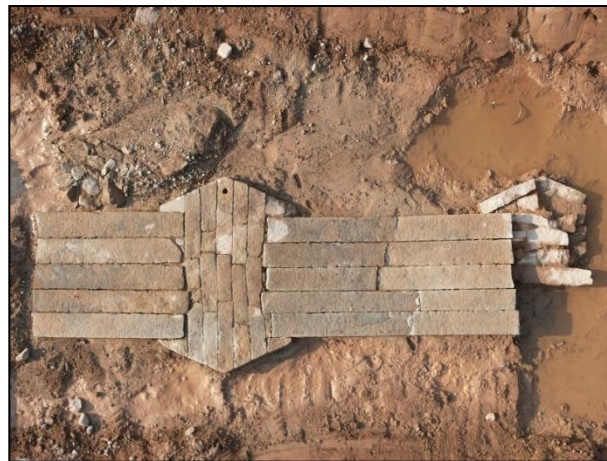
Stage 2: Building Consensus and Moving Forward

- ◆ Build up consensus on the possible solution
- ◆ Incorporate, discuss and analyse the views of the public collected in Stage 1
- ◆ Public forum/Consensus Building Workshop to be held by end 2010

Past



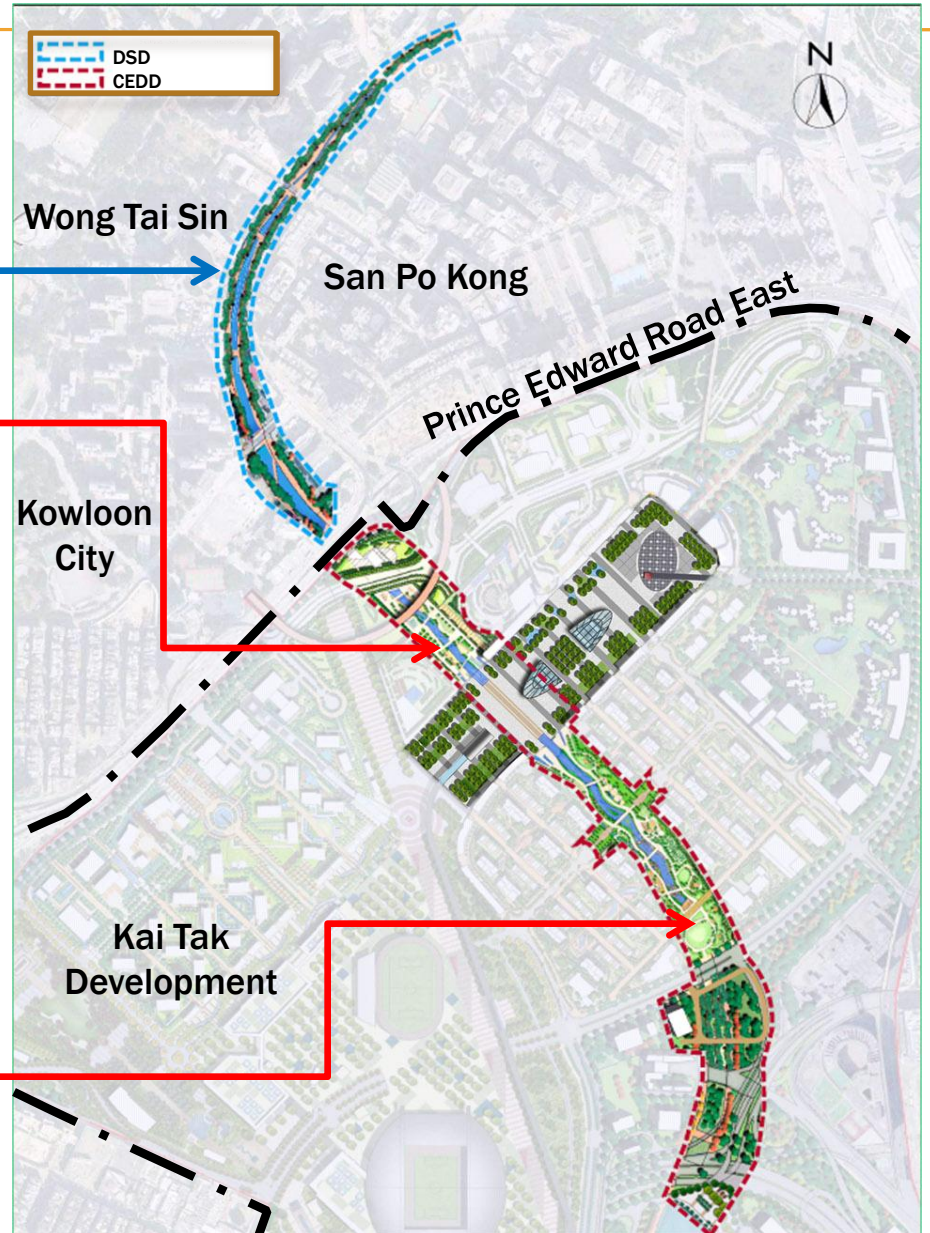
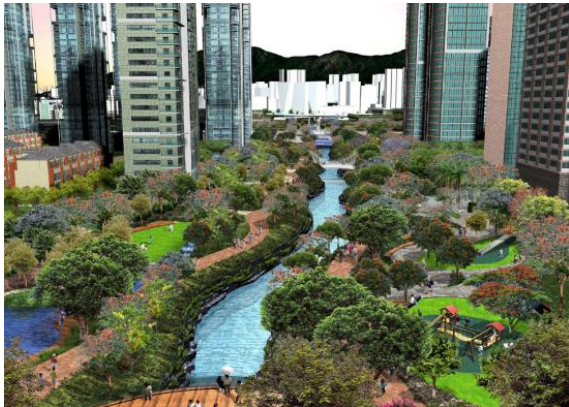
Present



Future



Kai Tak River



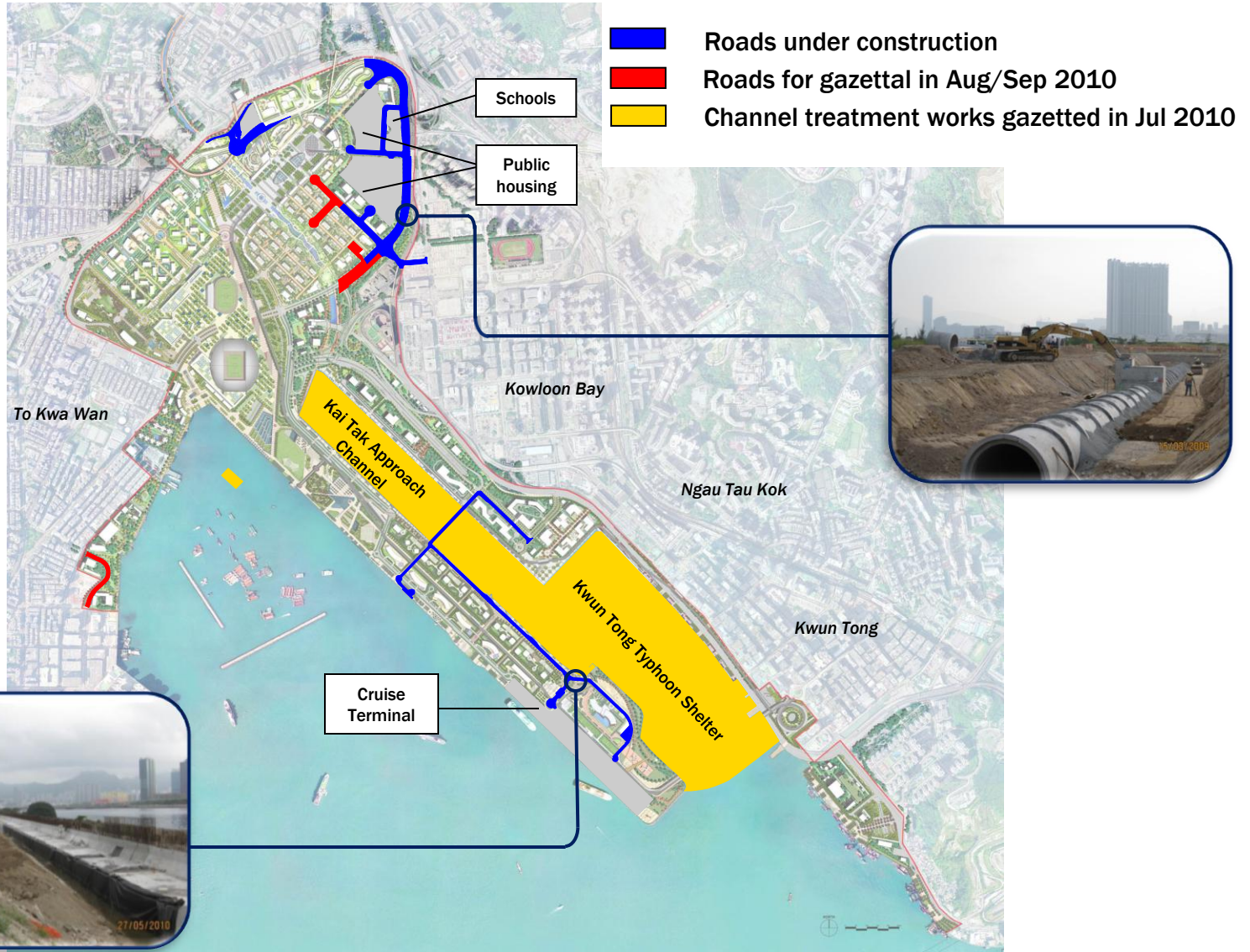
Enhance Greening and Urban Design



Harbourfront



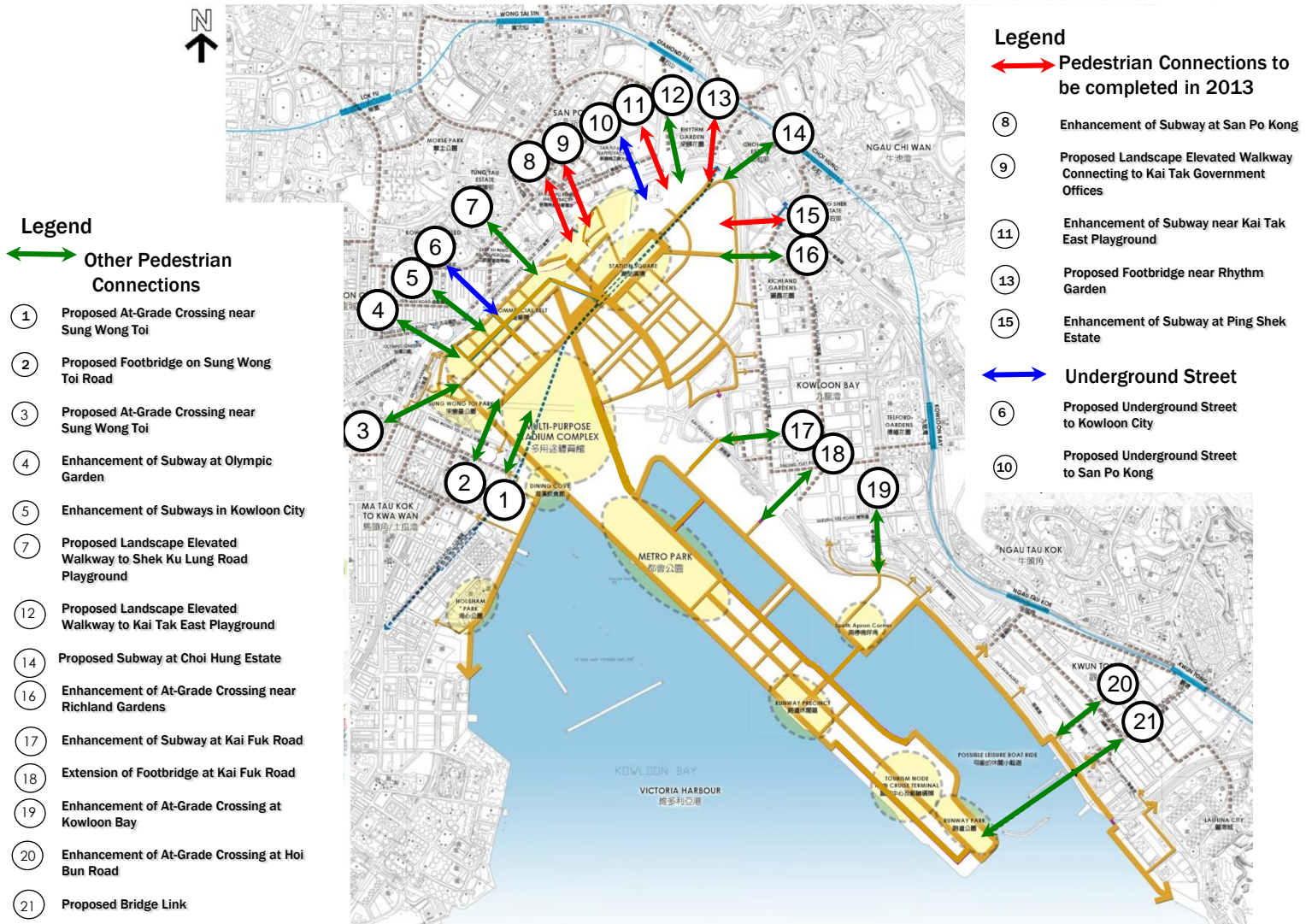
Engineering Works



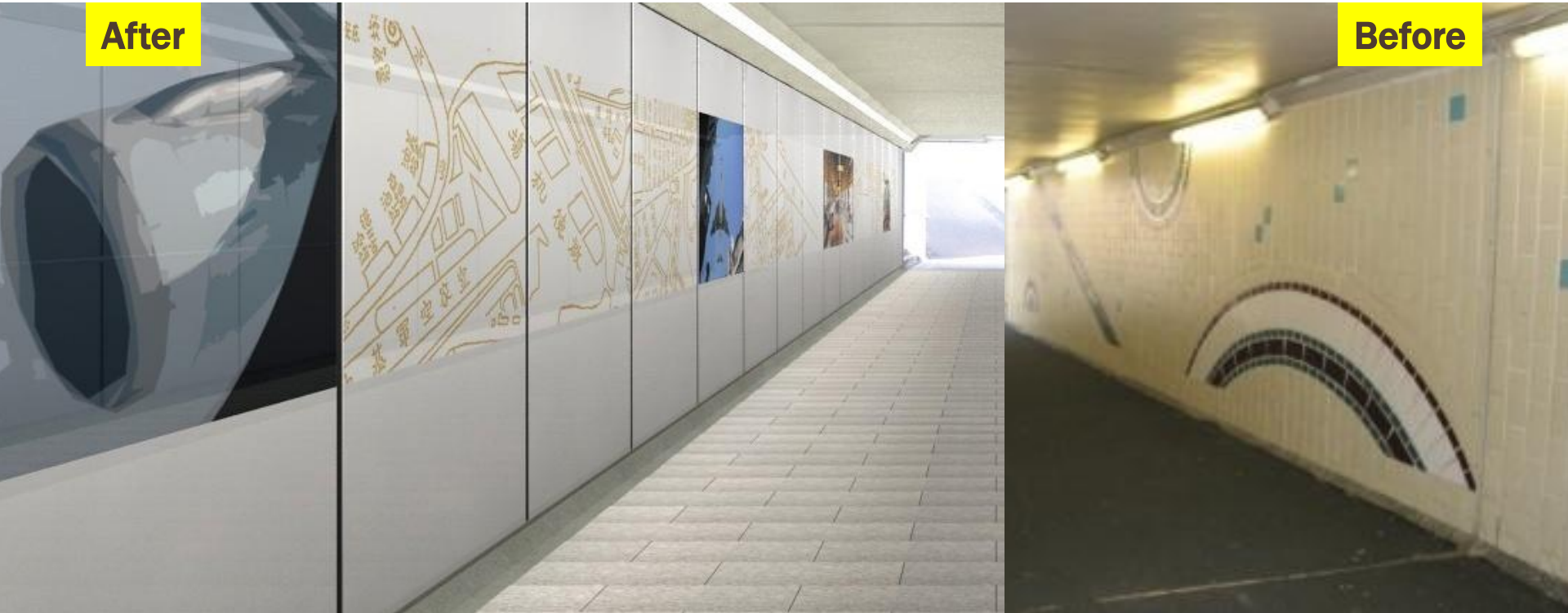
Conceptual Idea of Shifting the Roads



Pedestrian Facilities



Enhancement of Subway at San Po Kong ⑧



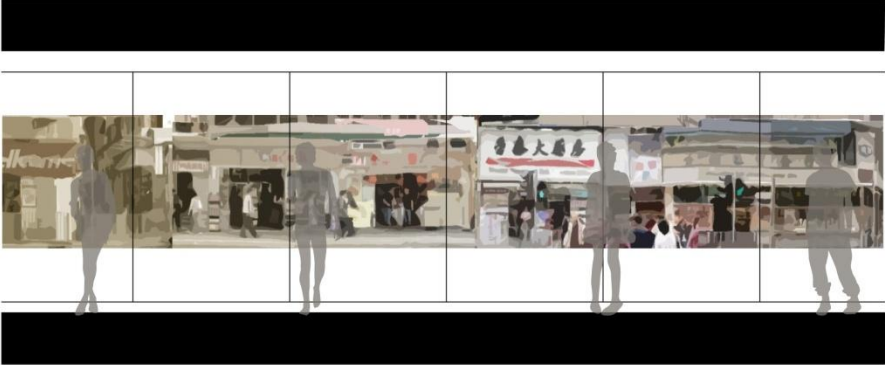
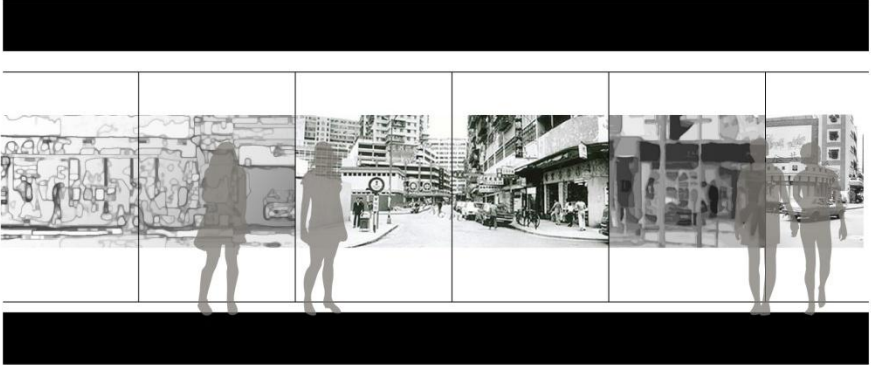
Part Sectional Elevation



Enhancement of Subway near Kai Tak East Playground



Part Sectional Elevation



Enhancement of Subway at Ping Shek Estate (15)



Part Sectional Elevation

