



HONG KONG  
maritime  
museum

香港海事博物館



*\* Shatin  
(Hong Kong's demographic centre)*

*\* Kowloon*

*Victoria Harbour*

*\* Central District*

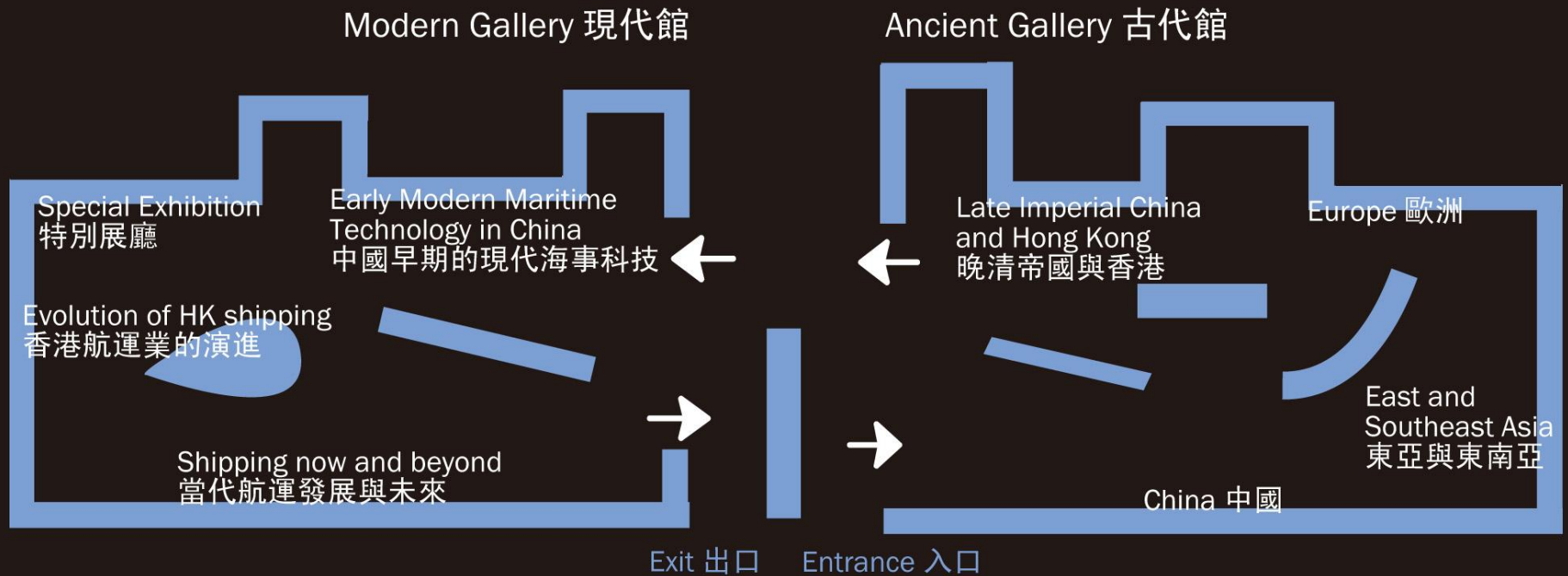
*\* Stanley*

*HKMM @ Murray House*

**HKMM@ Pier 8 - a  
better location in every  
respect**







**There are two galleries each of approximately 240m<sup>2</sup>**

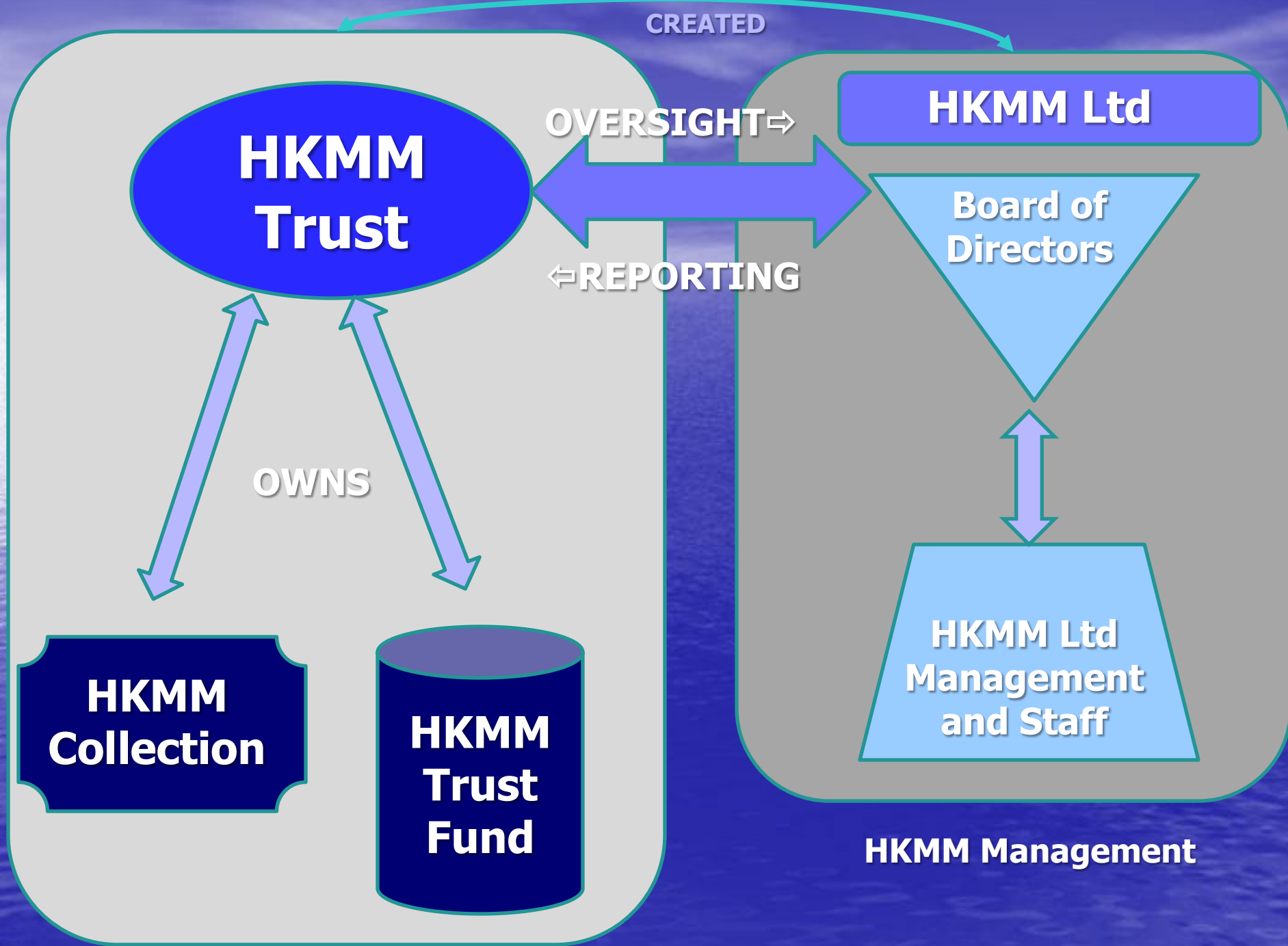
**Existing Museum Development Parameters**

# The Ancient Gallery



# The Modern Gallery





# Legend 圖例

Anchoring Public Spaces along the waterfront 海濱的錨點公共空間

## Leisure and Recreation Facility 消閒及康樂設施

- A1 Board Walk 木板步行徑
- A2 Ferry Plaza 渡輪廣場
- A3 Statue Square Corridor  
(with Landscaped Deck and Landscaped Open Space at-grade)  
皇后像廣場走廊 (包括園景平台及地面園林休憩用地)
- A4 Clock Tower & Gallery 鐘樓及展覽館
- A5 Entrance Plaza 入口廣場
- A6 Reassembled Queen's Pier 重組的皇后碼頭
- A7 Bicycle Station 單車站
- A8 Water Feature 水景
- A9 Edinburgh Place 愛丁堡廣場
- A10 Harbour Place  
(Waterfront-related Commercial and Leisure Uses)  
海港廣場 (與海濱有關之商業及休憩用地)
- A11 Viewing Platform 觀景平台
- A12 Cycle Track 單車徑
- A13 Food and Beverage Kiosk 餐飲設施
- A14 Festival Lawn 草坪
- A15 Harbourfront Promenade 海濱長廊
- A16 Viewing Platform (Sculpture Garden Theme)  
觀景平台 (雕塑花園主題)
- A17 Woodland 園景林地
- A18 Waterfront Event Plaza 海濱廣場
- A19 Green Carpet 草坡
- A20 Marina Place  
(Waterfront-related Commercial and Leisure Uses)  
海濱廣場 (與海濱有關之商業及休憩用地)
- A21 La Ramblas 林蔭步行徑
- A22 Art Event Plaza 藝術廣場
- A23 Public Landing Steps 公眾登陸樓梯
- A24 Marine Place Boardwalk 海濱廣場走廊

## Public Facility 公共設施

- B1 Elevated Walkway 高架行人走廊
- B2 CWB Ventilation Building 中環灣仔繞道通風大樓
- B3 Landscaped Deck 園景平台
- B4 Electricity Supply Station (below elevated walkway)  
電力供應站 (於高架行人走廊之下)
- B5 Environmentally Friendly Transport Reserve  
環保交通工具預留空間
- B6 Tree-lined Boulevard 綠線林蔭道
- B7 PLA Berth 解放軍軍碼頭
- B8 Ventilation Shaft 通風塔
- B9 Military Access 軍用通道
- B10 Electricity Supply Station 電力供應站
- B11 Hong Kong Academy for Performing Arts Extension  
香港演藝學院擴建部分
- B12 Proposed Hong Kong Visual Arts Education Centre  
擬建之香港視覺藝術教育中心
- B13 Landscaped Deck to HKCEC West  
通往香港會議展覽中心西面的園景平台

## Commercial Facility 商業設施

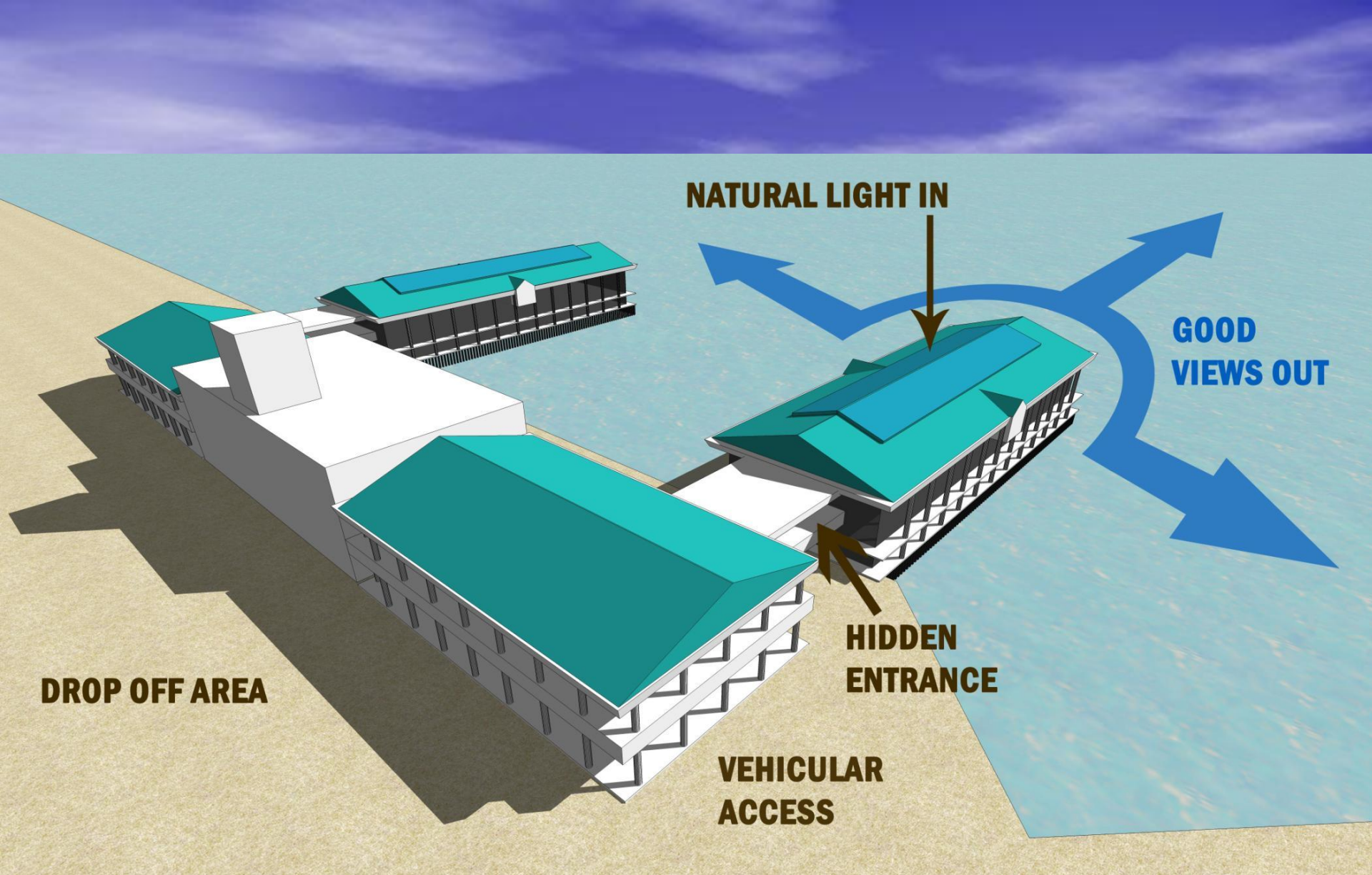
- C1 Retail / Cafe / Alfresco Dining over the Pier  
碼頭上蓋之零售商店/茶肆/露天飲食設施
- C2 Retail / Exhibition / Gallery  
零售商店及展覽設施
- C3 Iconic Building 地標性建築
- C4 Office with Retail below  
辦公室大樓及低層零售商店
- C5 Landscaped Podium with Retail below  
園景平台及低層零售商店
- C6 Retail 零售商店
- C7 Office 辦公室大樓
- C8 Landscaped Podium 園景平台
- C9 Hotel 酒店



# Location Plan



**Existing Pier 8**



**DROP OFF AREA**

**NATURAL LIGHT IN**

**GOOD  
VIEWS OUT**

**HIDDEN  
ENTRANCE**

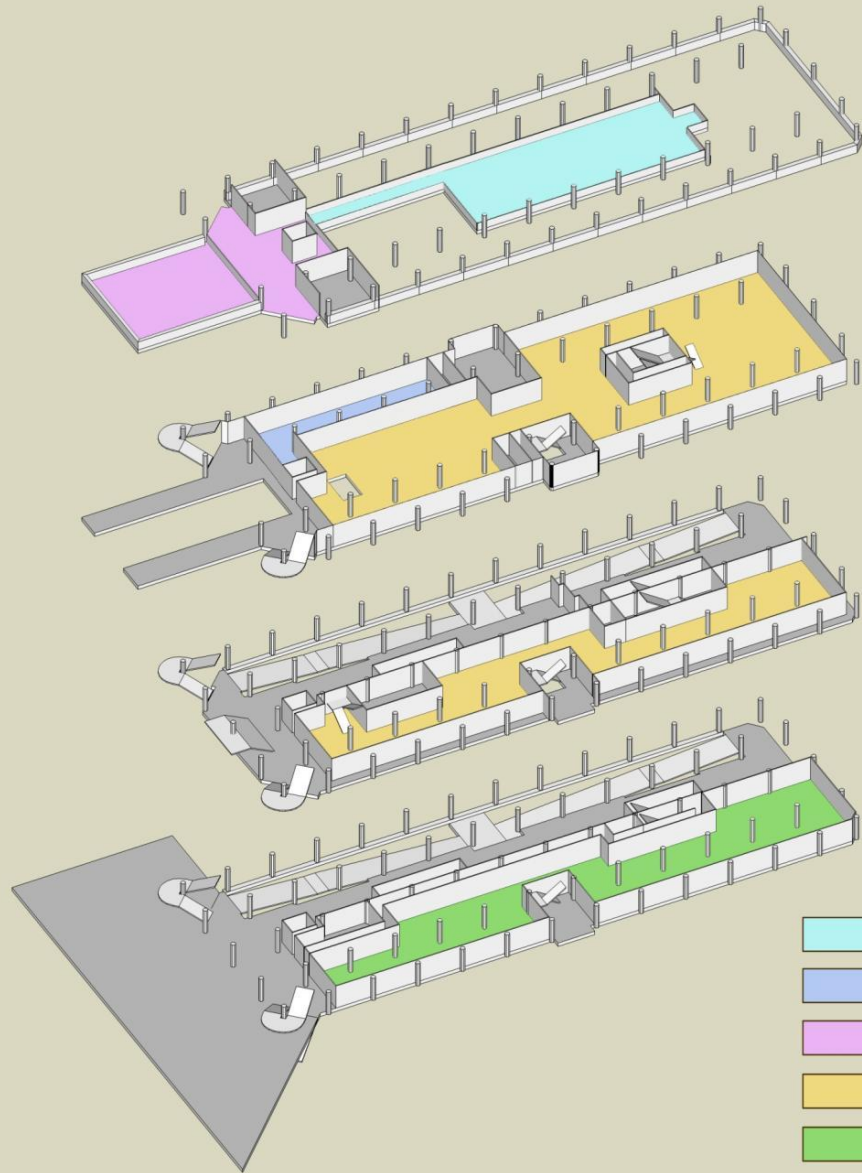
**VEHICULAR  
ACCESS**

# Site Conditions

FLOOR	USE	AREA (M <sup>2</sup> )	TOTAL (M <sup>2</sup> )
Ground	Museum Office	170	830
	Public Research Library	120	
	Artifact & Document Storage	350	
	Back of House	190	
First	Exhibition Gallery	860	860
Second	Exhibition Gallery	1620	1620
Third	Exhibition Gallery	380	890
	Indoor Public Cafe	250	
	Public Café Terrace	260	
	Total Gross Area		4200

BRIEF GALLERY GUIDE
Traditional Chinese ships
Canton Trade
Security on the China coast
Hong Kong Port 1841-1945
Hong Kong Ships and Shipyards
Protecting the Mariner
Ferries and Cruise Ships
Modern Water Sports
Maritime Archaeology
Victoria Harbour
Maritime Communications
Navigation and Meteorology
The Underwater World
The Sounds of the Sea

## Proposed Development Parameters



**3/F** (PIER ROOF VIEWING DECK)

**2/F** (PUBLIC VIEWING DECK)

**1/F** (UPPER DECK EAST)

**G/F** (LOWER DECK EAST)

-  **NEW MEZZANINE GALLERY**
-  **PUBLIC DISPLAY GALLERY**
-  **PUBLIC CAFE**
-  **MUSEUM GALLERY AREA**
-  **ARTEFACT STORAGE/OFFICE  
PUBLIC RESEARCH CENTRE**

**Proposed Arrangement for Pier 8**



# Proposed Ground Floor Public Research Centre

# First Floor Gallery - Concept Visual



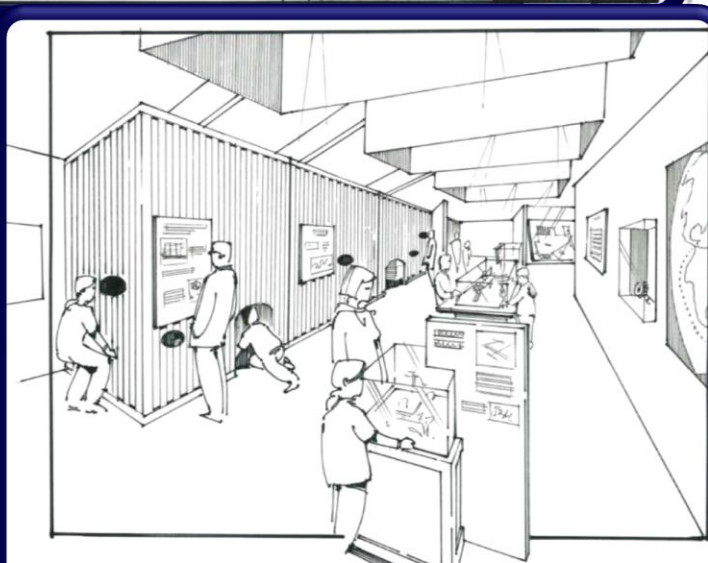
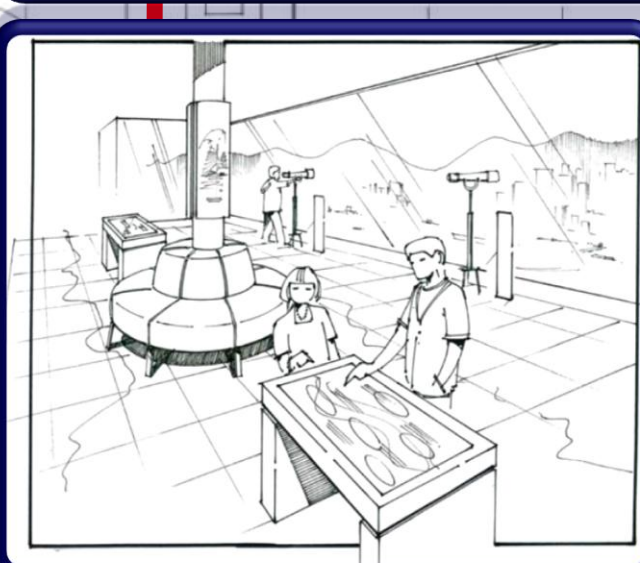
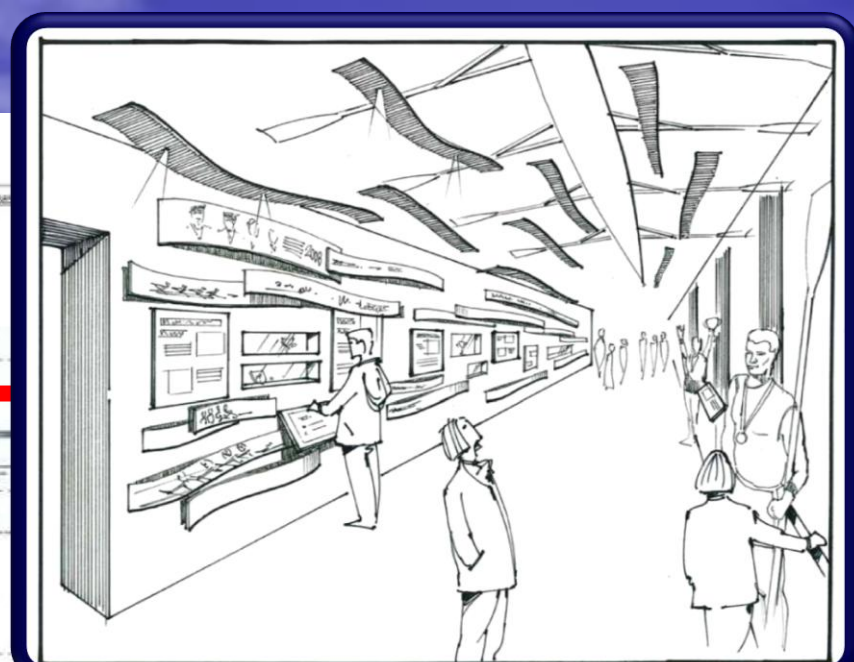
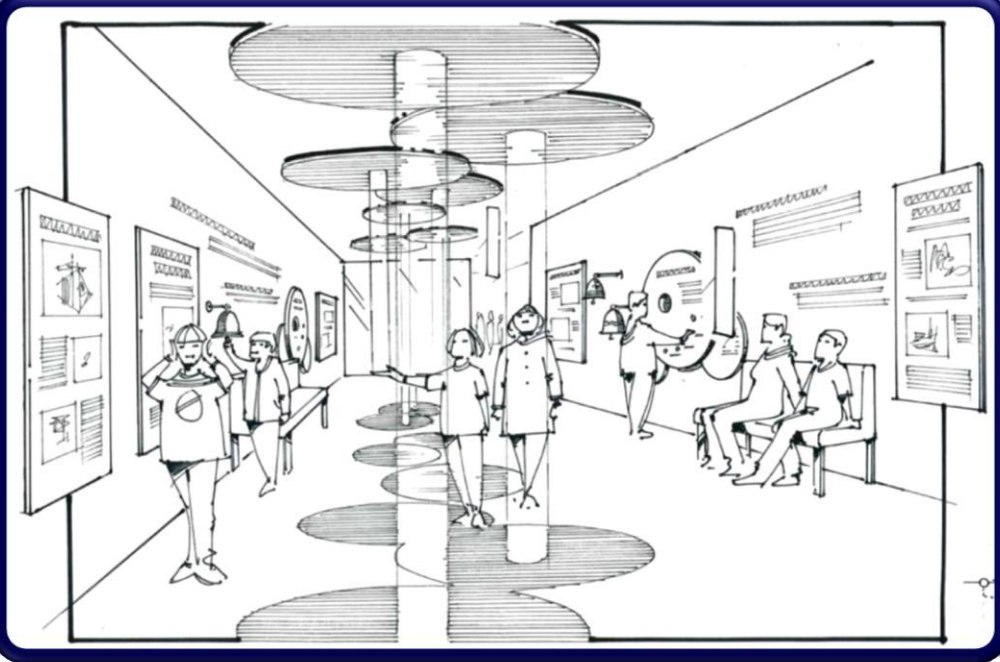
## Visual Reference



## Colours & Materials

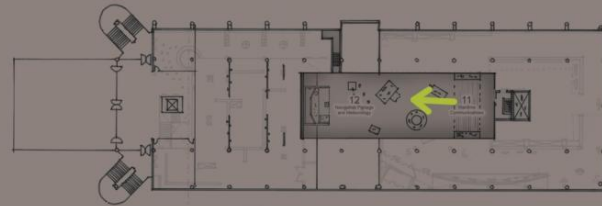


# Proposed First Floor Gallery



**Proposed Second Floor Gallery Spaces**

# Mezzanine Level - Concept Visual



## Visual Reference



Tactile Interactives



Nautical Materials



Ships Bridge



Open Space with Central Exhibits

## Colours & Materials



# Proposed Third Floor Mezzanine Addition



**Proposed Third Floor Public Terrace**



## **FAÇADE DESIGN CRITERIA**

*(incorporating comments from ArchSD and DPO)*

- **Retain similarity with Pier 7 yet provide an identity for the Museum**
- **Retain the vertical columns as an important visual feature**
- **Retain the visual identity of the horizontal beams**
- **Use the blue and white colours of the Museum logo.**

**Proposed View from  
TST**



**NE Close Up**



**Proposed Memorial Anchor**

*"The Hong Kong Maritime Museum is the home of Hong Kong's maritime heritage past, present and future where we place Hong Kong's maritime story into its local, regional and international context."*

The location of the Museum in Pier 8 will:

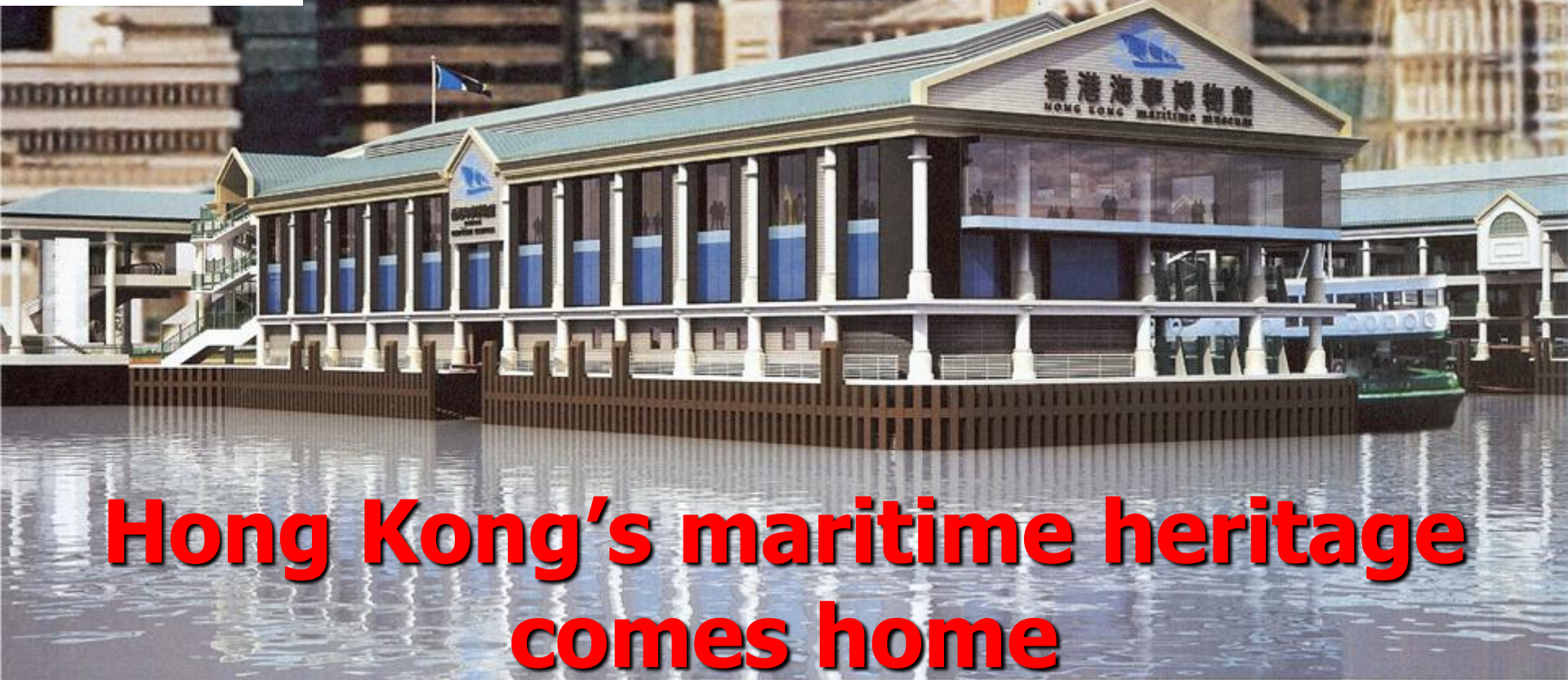
- Enhance the harbour as a place to visit
- Provide a focus of activity on the waterfront
- Create vibrancy and interest along Victoria Harbour
- Consolidate a maritime heritage node with the Star Ferry, Queen's Pier and proposed Seafarers' and Port Workers' Memorial Anchor
- Promote better understanding of the history of the harbour and Hong Kong
- Become a learning centre for people of Hong Kong and tourists
- Better utilize existing vacant or underused spaces
- Be respectful of the pier design whilst creating a recognizable identity

**Social and Economic Benefits**



HONG KONG  
maritime  
museum  
香港海事博物館

**@ Pier 8**



**Hong Kong's maritime heritage  
comes home**