

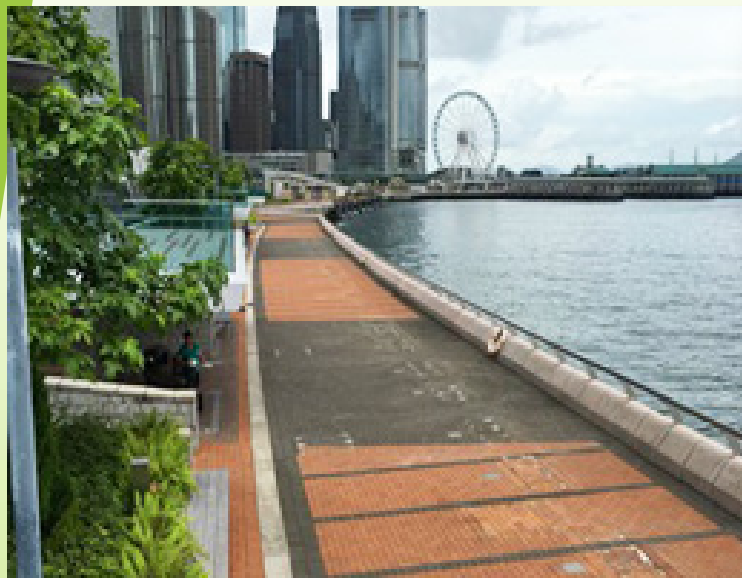


Recovery and Repair Works after
Typhoon at Leisure Venues of the
Leisure and Cultural Services Department
within Harbourfront Areas

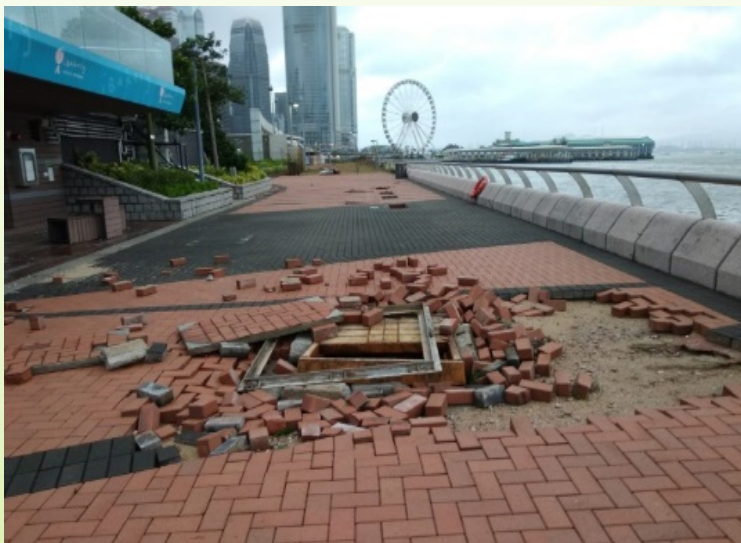
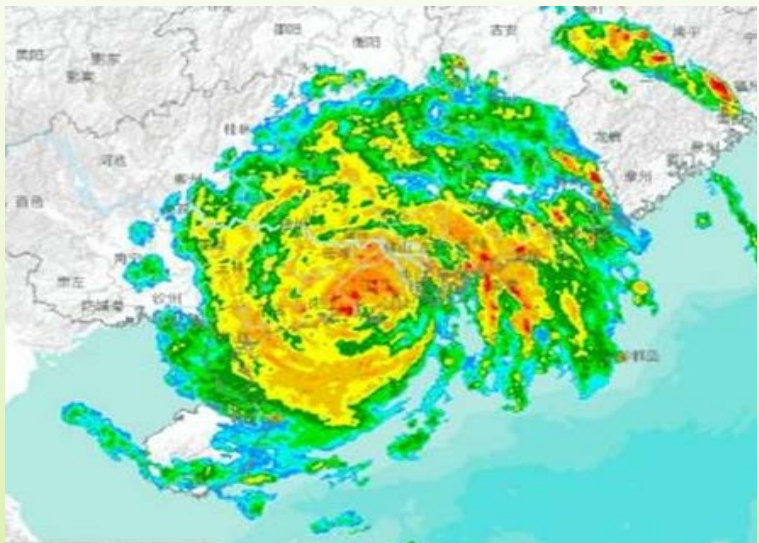
康樂及文化事務署在海港範圍內的
轄下康樂場地的風災善後及修復工作

Leisure Venues Managed by LCSD within Harbourfront Areas

康樂及文化事務署在海港範圍內的康樂場地



Typhoon Mangkhut 颶風山竹



Damage on Venue Facilities 場地受損設施

Hong Kong Island 香港島

Central and Western District Promenade – Central Section

中西區海濱長廊——中環段

Pit covers and pavement slabs along the promenade were displaced
渠蓋及行人路磚損壞



Trees collapsed 塌樹



Damage on Venue Facilities 場地受損設施

Hong Kong Island 香港島

Wan Chai Temporary Promenade
灣仔臨時海濱花園

Pit covers were damaged 渠蓋損毀



Damage on Venue Facilities 場地受損設施

Kowloon 九龍

Tsim Sha Tsui Promenade 尖沙咀海濱花園

Spalling concrete parapet wall 護牆石屎剝落



Trees collapsed 塌樹



Damage on Venue Facilities 場地受損設施

Kowloon 九龍

Tai Wan Shan Park 大環山公園

Tree and light pole collapsed 燈柱及樹木倒塌



Arbours were damaged 蔭棚損毀



Damage on Venue Facilities 場地受損設施

Kowloon 九龍

Kwun Tong Promenade 觀塘海濱花園

Polycarbonate covers damaged
塑料上蓋損毀



Trees collapsed 塌樹



Damage on Venue Facilities 場地受損設施

New Territories 新界

Ting Kau Beach 汀九灣泳灘

Debris and sea refuse washed on shore
海上垃圾及雜物堆積岸上



Pedestrian access was damaged
行人通道損毀



Debris and sea refuse washed on shore
海上垃圾及雜物堆積岸上



Damage on Venue Facilities 場地受損設施

New Territories 新界

Approach Beach 近水灣泳灘

Roller shutter gate was damaged 捲閘損毀



Trees collapsed 塌樹



Damage on Venue Facilities 場地受損設施

New Territories 新界

Tsuen Wan Park 荃灣公園

Canopy of amphitheater was torn apart
露天劇場帳篷損毀



Trees collapsed 塌樹



Damage on Venue Facilities 場地受損設施

New Territories 新界

Tsing Yi Promenade 青衣海濱公園

Railing was damaged 圍欄損毀



Trees collapsed 塌樹



Arbours were damaged 陰棚損毀



Post-typhoon Recovery and Restoration Efforts 颱風善後工作

1. Remove immediate danger (completed);
2. Resume electricity and water supply (completed);
3. Remove fallen trees and debris (ongoing); and
4. Liaise with maintenance departments to follow up repair works (ongoing).

1. 清理即時危險(已完成);
2. 恢復供水及供電(已完成);
3. 清理塌樹及雜物(進行中);及
4. 聯絡保養部門跟進維修工作(進行中)

Post-typhoon Recovery and Restoration Efforts 颱風善後工作

- All leisure venues of the LCSD within harbourfront areas were reopened within a few days after the passage of typhoon (except the Ting Kau Beach in Tsuen Wan District).
- As regards the Ting Kau Beach, longer time is needed for repairing beach facilities and clean up.
- 所有在海港範圍內的康樂及文化事務署康樂場地均於颱風過後數天內重開 (位於荃灣區的汀九灣泳灘除外)。
- 汀九灣泳灘需要較長時間清理場地及維修受損設施。

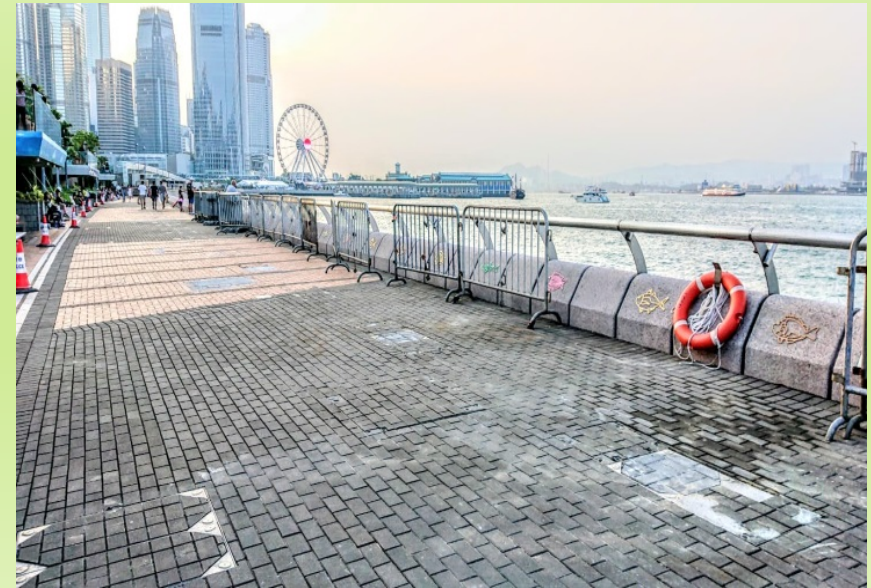
Post-typhoon Recovery and Restoration Efforts 颱風善後工作 Hong Kong Island 香港島

Central and Western District Promenade – Central Section 中西區海濱長廊——中環段

中西區海濱長廊——中環段

Before 善後工作前

After 善後工作後



Post-typhoon Recovery and Restoration Efforts 颱風善後工作 Hong Kong Island 香港島

Wan Chai Temporary Promenade 灣仔臨時海濱花園

Before 善後工作前



After 善後工作後



Post-typhoon Recovery and Restoration Efforts 颱風善後工作

Kowloon 九龍

Tsim Sha Tsui Promenade 尖沙咀海濱花園

Before 善後工作前



After 善後工作後



Post-typhoon Recovery and Restoration Efforts 颱風善後工作

Kowloon 九龍

Tai Wan Shan Park 大環山公園

Before 善後工作前



After 善後工作後



Post-typhoon Recovery and Restoration Efforts 颱風善後工作

Kowloon 九龍

Kwun Tong Promenade 觀塘海濱花園

Before 善後工作前



After 善後工作後

Post-typhoon Recovery and Restoration Efforts 颱風善後工作 New Territories 新界

Ting Kau Beach 汀九灣泳灘

Before 善後工作前



After 善後工作後



Post-typhoon Recovery and Restoration Efforts 颶風善後工作 New Territories 新界

Approach Beach 近水灣泳灘

Before 善後工作前



After 善後工作後



Post-typhoon Recovery and Restoration Efforts 颱風善後工作 New Territories 新界

Tsuen Wan Park 荃灣公園

Before 善後工作前

After 善後工作後



Post-typhoon Recovery and Restoration Efforts 颱風善後工作 New Territories 新界

Tsing Yi Promenade 青衣海濱公園

Before 善後工作前



After 善後工作後



Enhancing Resistance to Typhoon and Storm Surge 加強颱風及風暴潮應對措施

- LCSD will work with relevant departments to review and formulate improvement measures with a view to mitigating potential damage to the park facilities under typhoon in future.
- 康樂及文化事務署會與相關部門檢視及制定改善措施，以減低日後颱風吹襲時可能造成的破壞。

Enhancing Resistance to Typhoon and Storm Surge 加強颱風及風暴潮應對措施

Replanting of Trees 補種樹木

- Follow the right tree in the right place principle in our replanting programme.
- Trees with brittle wood structure will be avoided especially at windy locations.
- 依據「在合適的地方種植合適的樹」的原則補種樹木。
- 避免於當風位置種植木質脆弱的樹種。

Thank you

謝謝