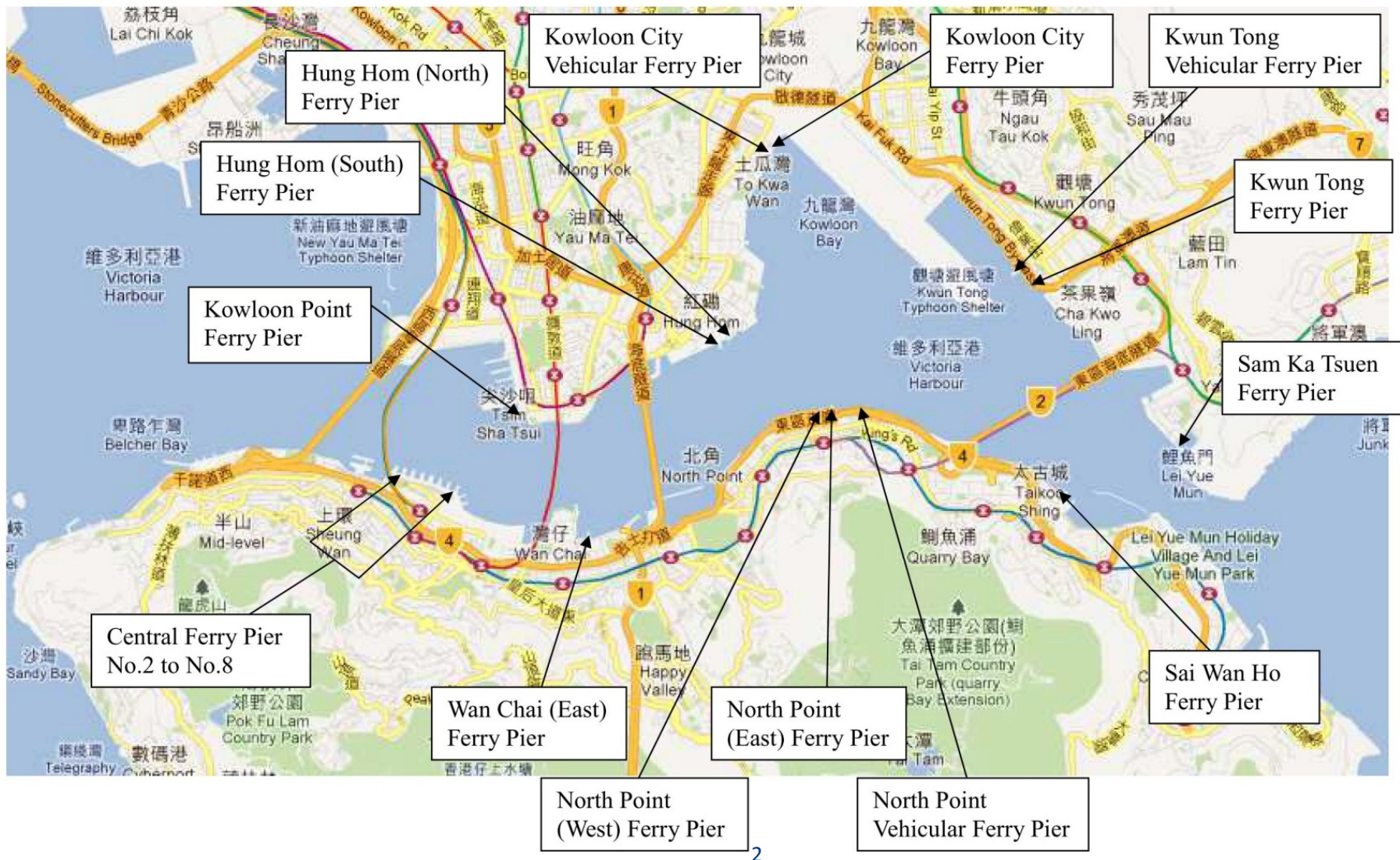


# **An Overview of Ferry Piers within Victoria Harbour**

# Ferry Piers within Victoria Harbour



# Types of Ferry Piers

- 2 major types:
  - Passenger ferry piers - for operation of passenger ferry services  
e.g. Central Piers Nos. 2 to 8
  - Vehicular ferry piers – for operation of vehicular ferry services including dangerous goods vehicles  
e.g. North Point Vehicular Ferry Pier



# Layout of Ferry Piers

- Standard finger pier  
e.g. Central Piers Nos. 2 to 8



# Layout of Ferry Piers

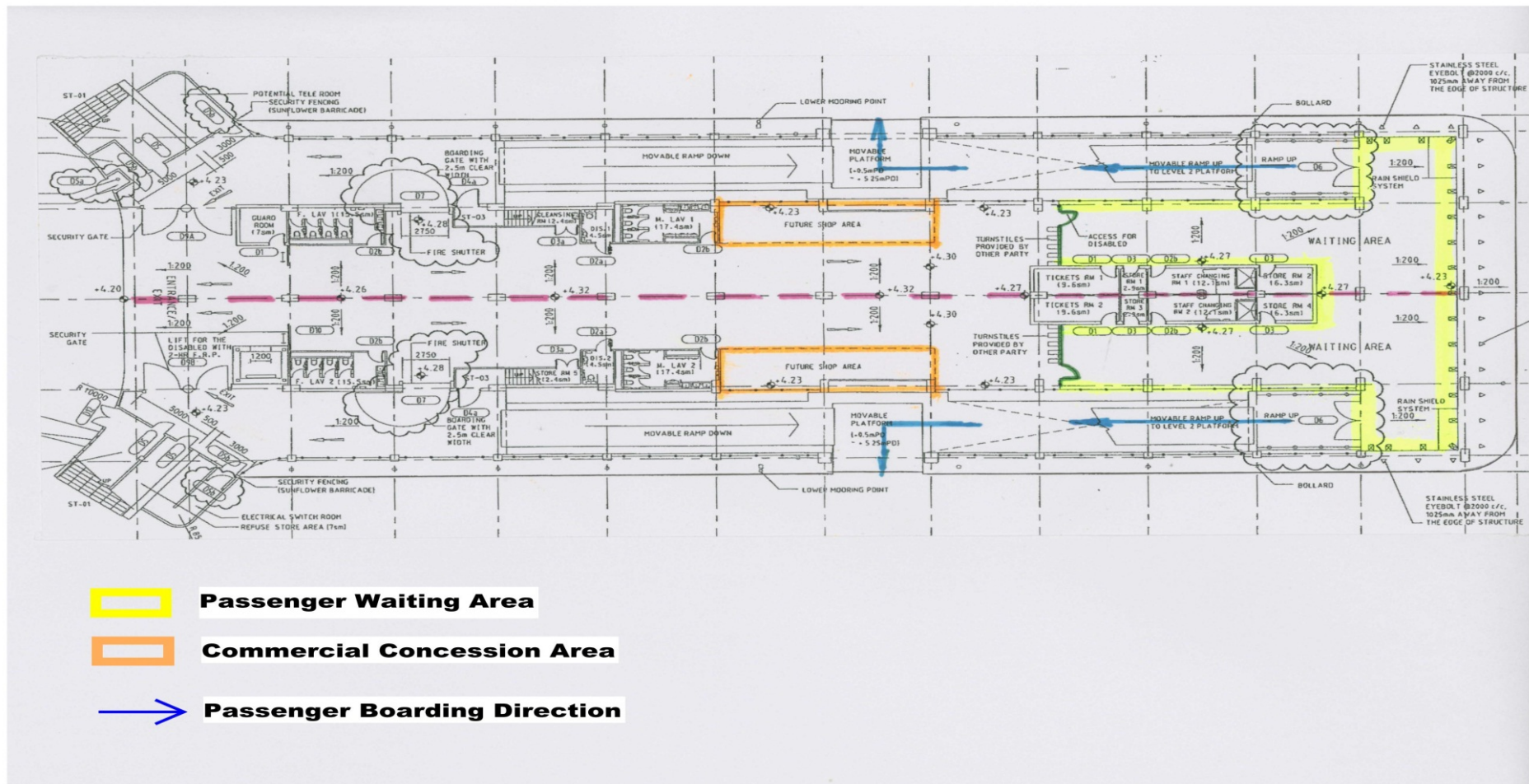
- Stub pier  
e.g. Hung Hom (North) Ferry Pier





# Passenger Ferry Pier

- Detailed layout of a standard finger pier



# Passenger Ferry Pier

## \* Operational facilities:

### ➤ Ticketing office



### ➤ Automatic ticket vending machine



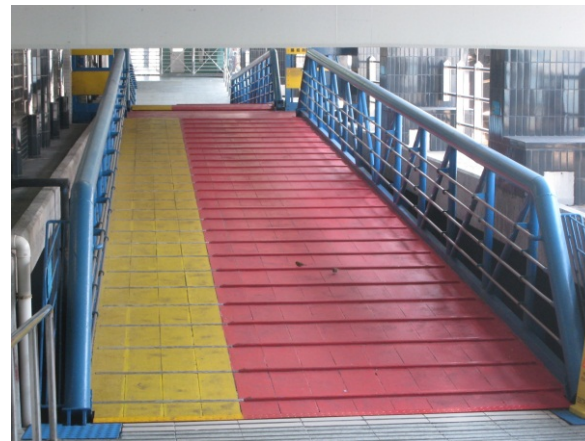
# Passenger Ferry Pier

## \* Operational facilities:

### ➤ Waiting area



### ➤ Lift and ramp



### ➤ Staff rest room



# Passenger Ferry Pier

## \* Passenger facilities:

### ➤ Information signs



### ➤ Toilets



# Passenger Ferry Pier

- \* Passenger facilities:
  - Barriers free aids





# Passenger Ferry Pier

## \* Other passenger facilities:

### ➤ Vending machines



### ➤ Shops





# Vehicular Ferry Pier



# Vehicular Ferry Pier

\* Operational facilities:





# Commercial Concessions at Ferry Piers

- Main source of non-fare box revenue
  - Dining services





# Commercial Concessions at Ferry Piers

- Food & beverage shops, convenience shops & retail services



# Commercial Concessions at Ferry Piers

- Advertising panels and tele-base communication stations



# Control of Occupancy

- \* Piers used by licensed ferry operators
  - by tenancy agreements, in which the pier rental is specified
- \* Piers used by franchised ferry operators
  - by franchise, with pier rental specified in the Government Gazette



# Other Uses of Ferry Piers

- Supporting ferry operation
  - berthing of vessels during off-peak and overnight periods
  - rest area for crew members
- Uses as approved by GPA or relevant Bureaux
  - Hong Kong Maritime Museum at eastern berth of Central Pier No.8
  - short term tenancy for commercial purposes

# Unused Ferry Piers

- \* Reserved for use by other licensed ferry services during temporary suspension of the relevant piers, e.g. western berth of Central Pier No.8
- \* Reserved as surplus Government premises to be taken care of by Government Property Agency e.g. western berth of North Point (East) Ferry Pier
- \* Re-assigned to existing licensed ferry operators to meet their operational needs (e.g. vessel berthing) e.g. Hung Hom (South) Ferry Pier

# Management of Ferry Piers

- \* Transport Department:

- Regulating the general use of ferry piers

- \* Ferry Operators:

- Day-to-day management including:

- \* control of passenger flows
- \* cleansing
- \* patrolling and security
- \* power and water payment
- \* minor and routine maintenance
- \* reporting of defects



# Maintenance of Ferry Piers

- \* Civil Engineering and Development Department
  - Substructure (i.e. structure at and below deck slab)



# Maintenance of Ferry Piers

- \* Architectural Services Department
  - Superstructure (i.e. structure above deck slab)



# Maintenance of Ferry Piers

- \* Electrical and Mechanical Services Department
  - Electrical and mechanical systems







Thank You