

Review on Berthing and Sheltered Space for Local Vessels in Hong Kong



Outline

- Different Classes of Local Vessel
- Use of Typhoon Shelters
- Concerns and Suggestions (Boating Community and Public)
- Preliminary thought of the Review



Class I (Ferry) (Launch)



Class II (Dumb steel lighter)
(Tug)



Class III (Fishing Vessel) (Outboard open sampan)




Class IV (Auxiliary powered yacht) (Open cruiser)




Class IV (Cruiser)
(converted from other Classes)

Recent Trend

Class	End 2008	June 2013
I	378	378
II	1766	1815
III	5202	6463
IV	5968	8256

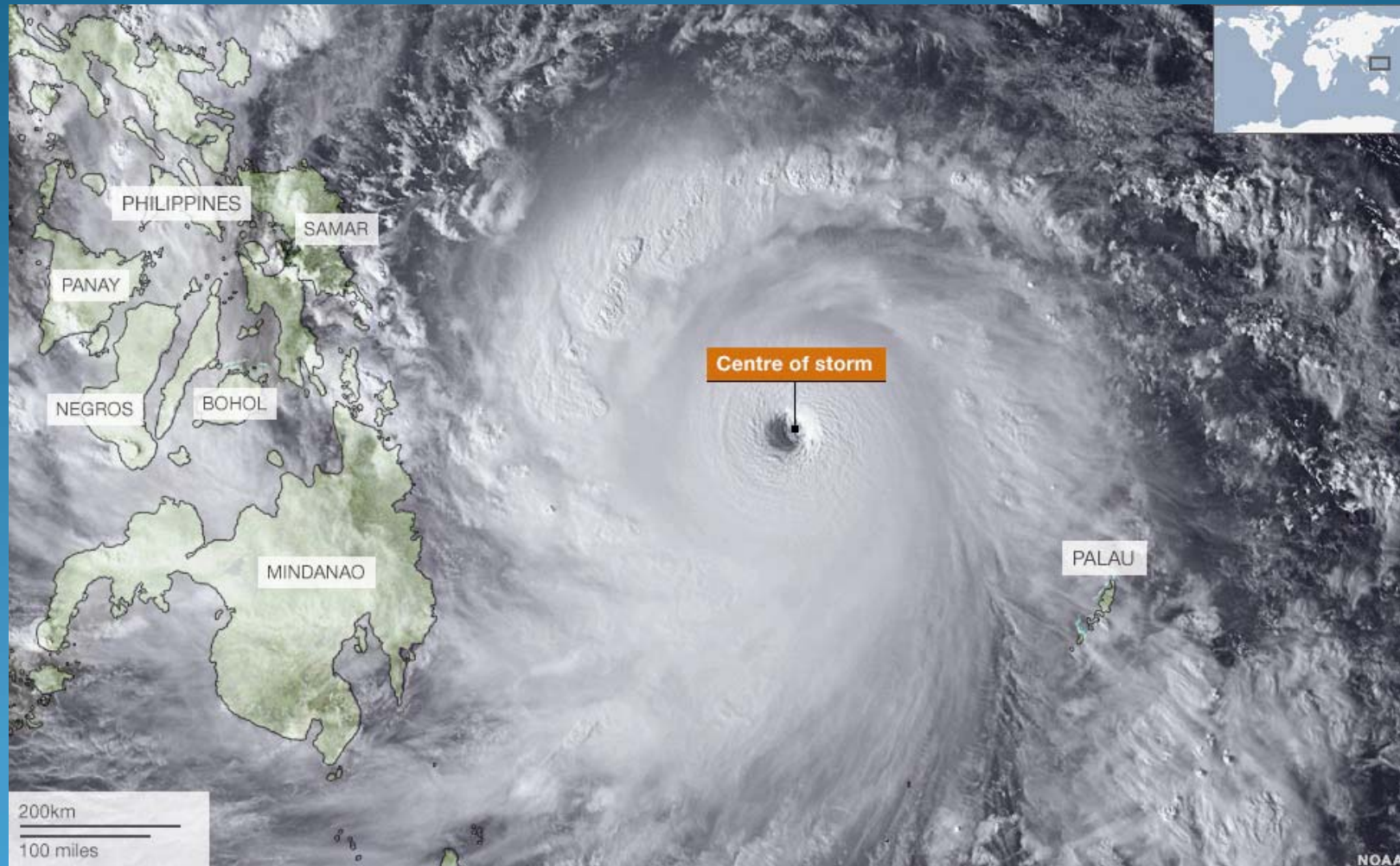


Aberdeen West
Typhoon Shelter
(normal day)



Aberdeen West
Typhoon Shelter
(fishing moratorium)

Typhoon : Haiyan



Wrath of Haiyan





Working Barge washed to shore
of Hang Fa Chuen in 2011

List of Boat Club/Organization/Individual (with concerns and suggestions)

- Designing Hong Kong
- Some Water Sport Associations
- Some Sai Kung District Council Members
- Aberdeen Fishermen Association
- LegCo Member, Hon Frankie Yick & Hon Dennis Kwok
- Pleasure Boating Alliance (Aberdeen)
- International Marina Club Limited
- Hong Kong Cargo-Vessel Traders' Association
- Tai Tam Marine and Water Education Foundation
- Chuang's Consortium International Ltd

Their Concerns

- Inadequate mooring facilities or marinas to enhance water sport activities
- Lack of private moorings and berthing spaces for local vessels in particular for pleasure vessel and its development
- Existing marinas or club moorings facilities are too expensive
- Inadequate typhoon sheltered space in Victoria Harbour
- Shortfall of berthing facilities for pleasure vessel may lure owner into illegal moorings arrangements

Their Suggestions

- Convert some typhoon shelters in the Harbour into marina, water sport centre or designated water space for the exclusive use of pleasure vessel
- Zone part of a typhoon shelter for the exclusive use of fishing vessel
- Develop marina or berthing facilities in sheltered water e.g. Tai Tam (Hong Kong South), Tung Chung (Lantau North), Tso Wo Hang (Sai Kung) and Pak Sha Kok (Tai Po)
- Increase more private mooring areas preferably inside the Harbour
- Expand the size of existing typhoon shelters in the Harbour as Hei Ling Chau T/S is too remote

The Review in three Facets

- Facet I: Stocktaking of Supply and Demand Situation
- Facet II: Review of Policy and Management Issues, and Proposal for Options
- Facet III: Consultation and Recommendations for Administration's Consideration

Facet I

- Stocktaking the use of berthing and sheltered space by different classes of vessels on a regional basis
- Assess the demand and supply situation (with projection up to the year 2030) and identify mismatches, if any, both on a regional and territorial basis

Facet II

- Form a Working Group (WG) comprising relevant experts from Government Departments and Professionals from the Trade
- WG to steer the work of consultant and to develop practical options

Facet III

- Form a Steering Committee to steer the tasks under Facet II and III

Thank You !