

An overview of public landing facilities in West Kowloon Cultural District

Task Force on Water-Land Interface

19 March 2013

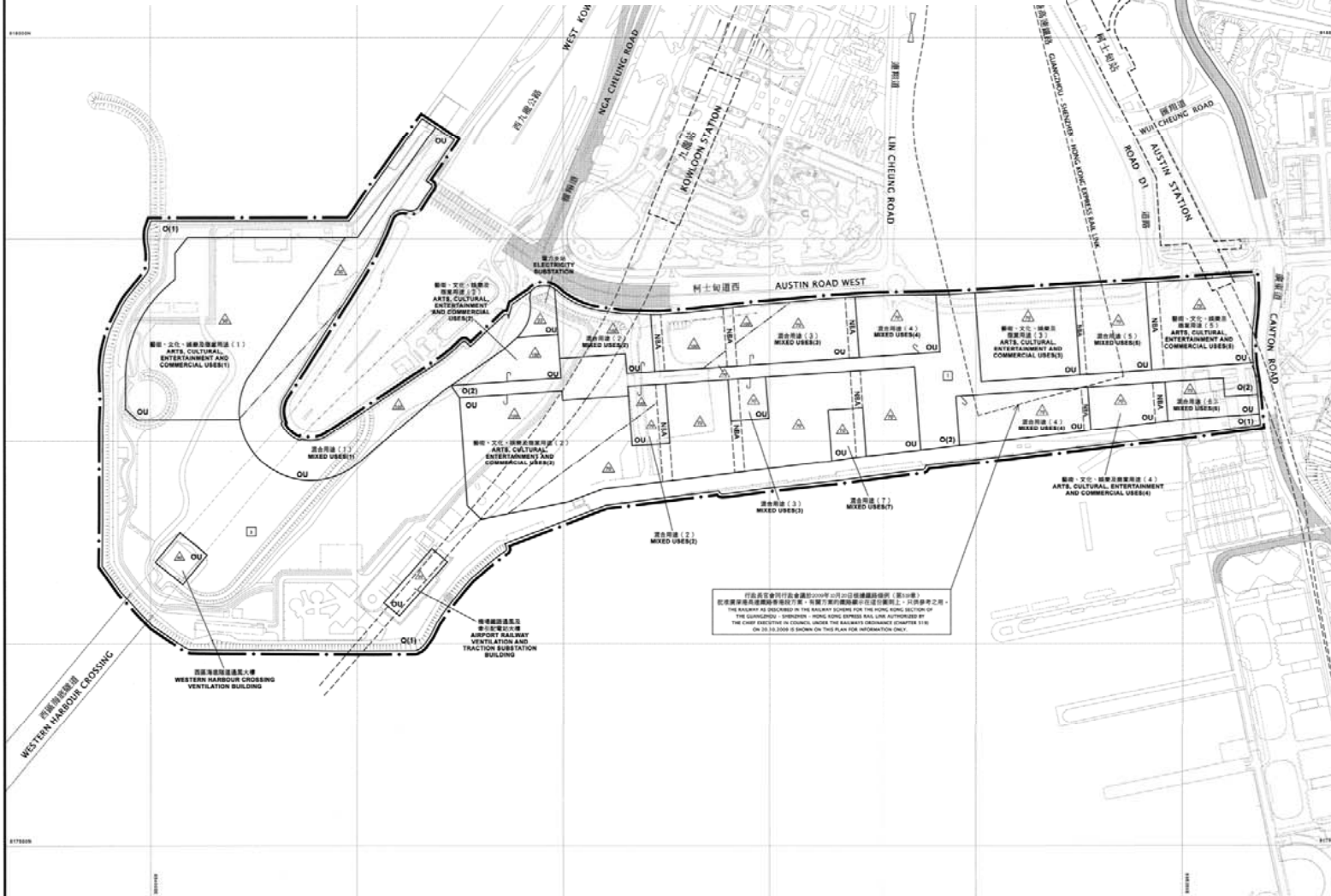


West Kowloon Cultural District



WKCD Development Plan

Approved by the Chief Executive in Council on 8 January 2013



圖例 NOTATION

ZONES	地帶
OPEN SPACE	休憩用地
OTHER SPECIFIED USES	其他指定用途
COMMUNICATIONS	交通
RAILWAY AND STATION (UNDERGROUND)	鐵路及車站 (地下)
ELEVATED ROAD	高架道路
MISCELLANEOUS	其他
BOUNDARY OF PLANNING SCHEME	規劃區界線
BUILDING HEIGHT CONTROL ZONE BOUNDARY	建築高度管制區界線
MAXIMUM BUILDING HEIGHT (IN METRES ABOVE PRINCIPAL DATUM)	最高樓層高度 (在正水平基準面上方)
MAXIMUM BUILDING HEIGHT (IN NUMBER OF STOREYS)	最高樓層高度 (樓層數目)
NON-BUILDING AREA	非建築用地

土地用途及面積一覽表 SCHEDULE OF USES AND AREAS

USES	大約面積及百分比 APPROXIMATE AREA & %		用途
	公頃 HECTARES	% 百分比	
OPEN SPACE	17.23	42.12	休憩用地
OTHER SPECIFIED USES	23.68	57.88	其他指定用途
TOTAL PLANNING SCHEME AREA	40.91	100.00	規劃總面積

夾附的《註釋》屬這份圖則的一部分
THE ATTACHED NOTES ALSO FORM PART OF THIS PLAN

行政局會於行政會議於2008年10月20日通過該圖則(第10條)
此項圖則在修訂時所採用的方案, 有關方案均與該圖則在該圖則上, 共同參考之用。
THE BOARD IS INCHARGED OF THE RAILWAY SCHEME FOR THE HONG KONG SECTION OF
THE GUANGZHOU - SHENZHEN HONG KONG EXPRESS RAIL LINK AUTHORIZED BY
THE CHIEF EXECUTIVE IN COUNCIL UNDER THE RAILWAYS ORDINANCE CHAPTER 516
ON 20.10.2008 IS SHOWN ON THIS PLAN FOR INFORMATION ONLY.

行政局會於行政會議於2013年1月8日 根據城市
規劃條例第9(1)(a)條核准的圖則
APPROVED BY THE CHIEF EXECUTIVE IN COUNCIL UNDER
SECTION 9(1)(a) OF THE TOWN PLANNING ORDINANCE ON
8 JANUARY 2013

Ma Kinnie WONG 黃潔怡女士
CLERK TO THE EXECUTIVE COUNCIL 行政會議秘書

香港城市規劃委員會根據城市規劃條例擬備的西九文化區發展圖則 TOWN PLANNING ORDINANCE, HONG KONG TOWN PLANNING BOARD WEST KOWLOON CULTURAL DISTRICT DEVELOPMENT PLAN

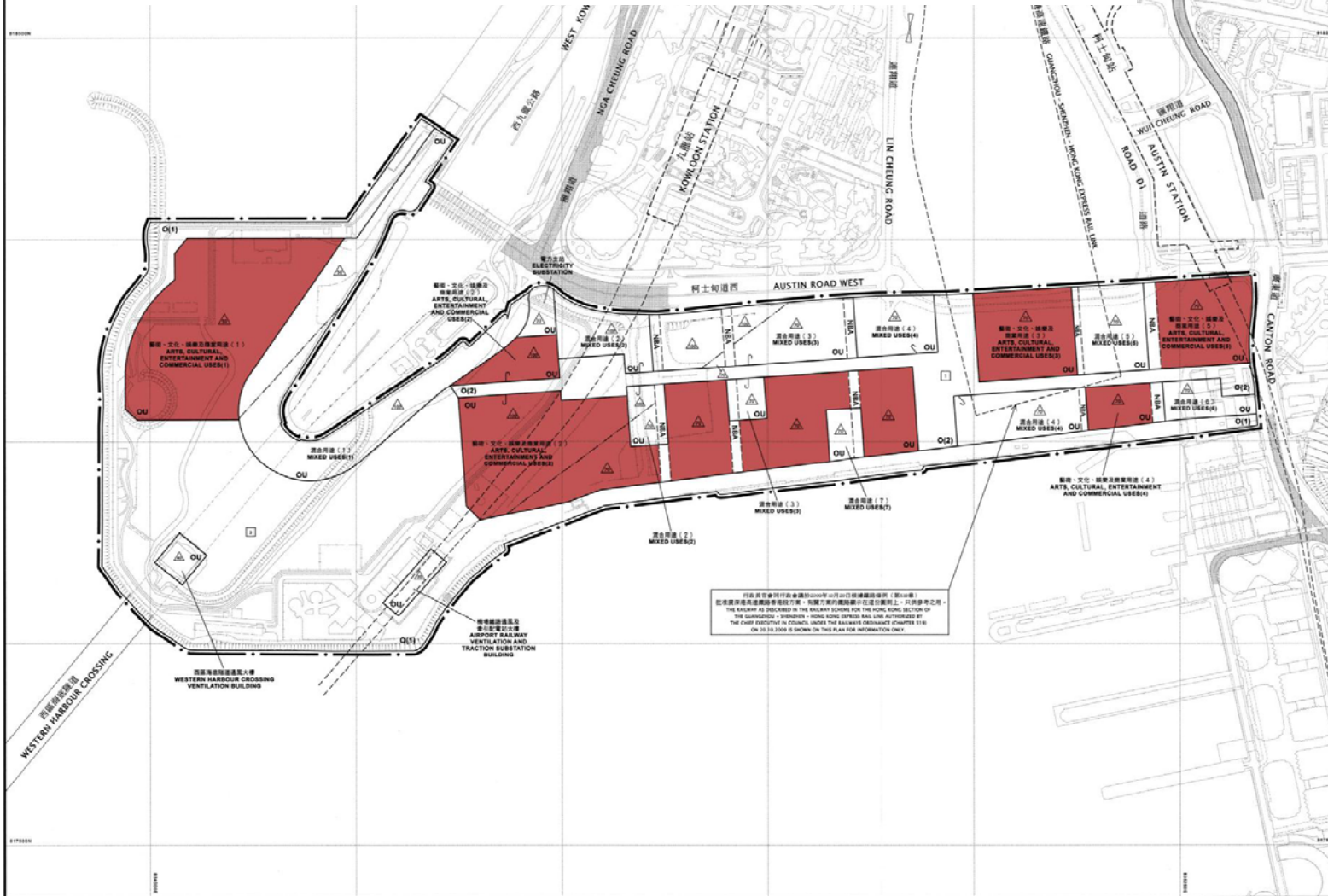
SCALE 1:2,500 比例尺
METRES 0 100 200 300 400 METRES

根據西九文化區管理條例第21(2)(a)條擬備
PREPARED UNDER SECTION 21(2)(a) OF THE
WEST KOWLOON CULTURAL DISTRICT AUTHORITY ORDINANCE

圖則編號 S/K20/WKCD/2
PLAN No.

WKCD Arts and Cultural Venues

Approved by the Chief Executive in Council on 8 January 2013



圖例 NOTATION

ZONES	地帶
OPEN SPACE	休憩用地
OTHER SPECIFIED USES	其他指定用途
COMMUNICATIONS	交通
RAILWAY AND STATION (UNDERGROUND)	鐵路及車站 (地下)
ELEVATED ROAD	高架道路
MISCELLANEOUS	其他
BOUNDARY OF PLANNING SCHEME	規劃範圍界線
BUILDING HEIGHT CONTROL ZONE BOUNDARY	建築物高度管制區界線
MAXIMUM BUILDING HEIGHT (IN METRES ABOVE PRINCIPAL DATUM)	最高建築物高度 (在基本平面以上之高度)
MAXIMUM BUILDING HEIGHT (IN NUMBER OF STOREYS)	最高建築物層數 (樓層數目)
NON-BUILDING AREA	非建築用地

土地用途及面積一覽表 SCHEDULE OF USES AND AREAS

USES	次約面積及百分比 APPROXIMATE AREA & %	用途	
	面積 HECTARES	% 百分比	
OPEN SPACE	17.23	42.12	休憩用地
OTHER SPECIFIED USES	23.68	57.88	其他指定用途
TOTAL PLANNING SCHEME AREA	40.91	100.00	規劃範圍總面積

附屬的《註釋》屬這份圖則的一部分
THE ATTACHED NOTES ALSO FORM PART OF THIS PLAN

此圖則係根據《香港城市規劃條例》第 161 條擬備的。圖則內所載的資料，只供參考之用。此圖則內所載的資料，如有任何錯誤，概不負責。此圖則內所載的資料，如有任何更改，概不負責。此圖則內所載的資料，如有任何更改，概不負責。

行政局會議於 2013 年 1 月 8 日 通過
APPROVED BY THE CHIEF EXECUTIVE IN COUNCIL UNDER SECTION 9(1)(a) OF THE TOWN PLANNING ORDINANCE ON 8 JANUARY 2013

Ma Kinnie WONG
CLERK TO THE EXECUTIVE COUNCIL

香港城市規劃委員會根據城市規劃條例擬備的西九文化區發展圖則 TOWN PLANNING ORDINANCE, HONG KONG TOWN PLANNING BOARD WEST KOWLOON CULTURAL DISTRICT DEVELOPMENT PLAN

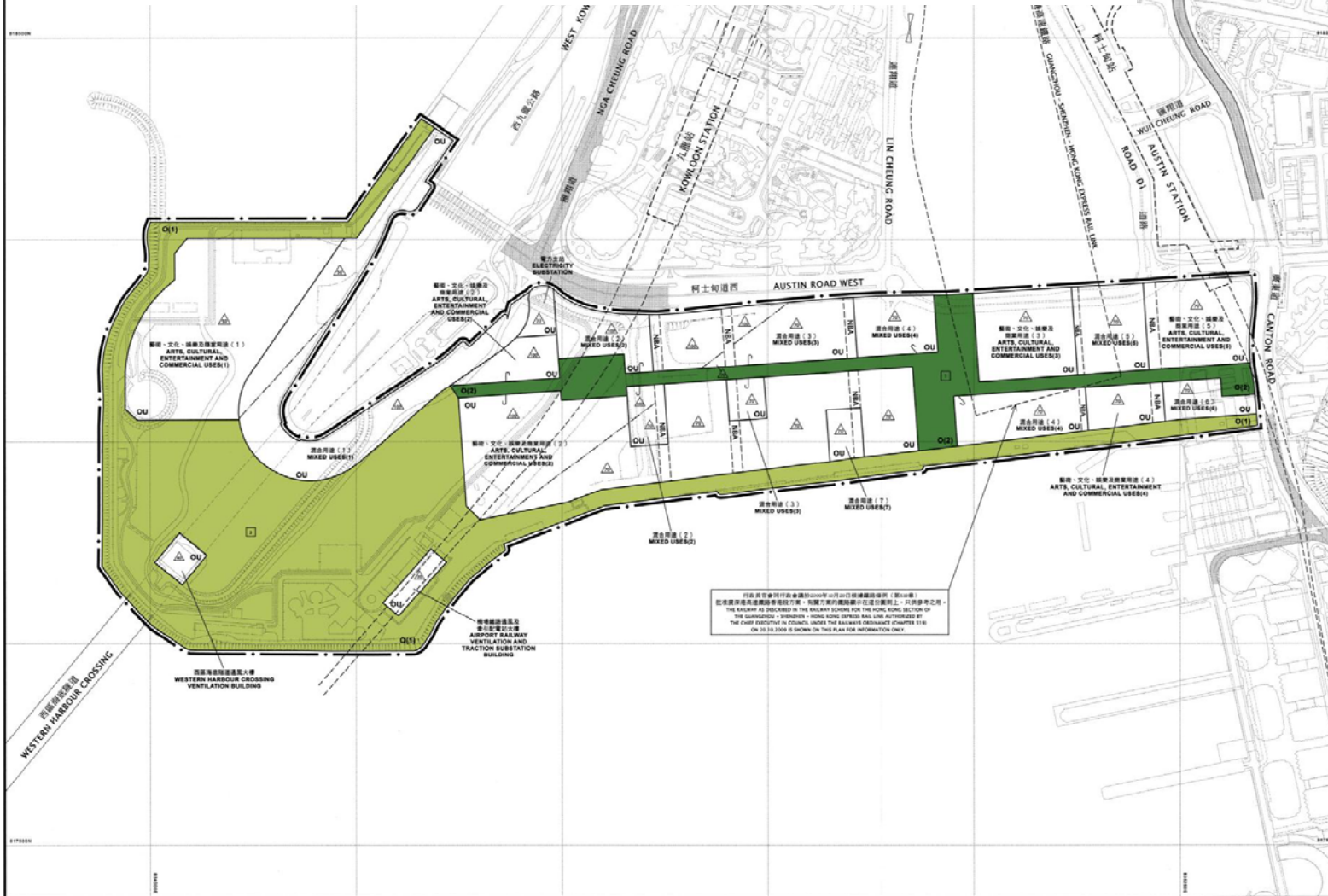


依據西九文化區管理局條例第 21(2)(a) 條擬備
PREPARED UNDER SECTION 21(2)(a) OF THE WEST KOWLOON CULTURAL DISTRICT AUTHORITY ORDINANCE

圖則編號
PLAN No. S/K20/WKCD/2

WKCD Open Space

Approved by the Chief Executive in Council on 8 January 2013



圖例 NOTATION

ZONES	地帶
OPEN SPACE	休憩用地
OTHER SPECIFIED USES	其他指定用途
COMMUNICATIONS	交通
RAILWAY AND STATION (UNDERGROUND)	鐵路及車站 (地下)
ELEVATED ROAD	高架道路
MISCELLANEOUS	其他
BOUNDARY OF PLANNING SCHEME	規劃範圍界線
BUILDING HEIGHT CONTROL ZONE BOUNDARY	建築物高度管制區界線
MAXIMUM BUILDING HEIGHT (IN METRES ABOVE PRINCIPAL DATUM)	最高建築物高度 (在基本水平基準上若干米)
MAXIMUM BUILDING HEIGHT (IN NUMBER OF STOREYS)	最高建築物層數 (層數限制)
NON-BUILDING AREA	非建築用地

土地用途及面積一覽表 SCHEDULE OF USES AND AREAS

USES	大約面積及百分比 APPROXIMATE AREA & %		用途
	公頃 HECTARES	% 百分比	
OPEN SPACE	17.23	42.12	休憩用地
OTHER SPECIFIED USES	23.68	57.88	其他指定用途
TOTAL PLANNING SCHEME AREA	40.91	100.00	規劃範圍總面積

附屬的《註釋》屬這份圖則的一部分
THE ATTACHED NOTES ALSO FORM PART OF THIS PLAN

行政局會議於2013年1月8日 根據城市規劃條例第9(1)(a)條核准的圖則
APPROVED BY THE CHIEF EXECUTIVE IN COUNCIL UNDER SECTION 9(1)(a) OF THE TOWN PLANNING ORDINANCE ON 8 JANUARY 2013

Ma Kinnie WONG
美潔怡女士
CLERK TO THE EXECUTIVE COUNCIL
行政會議秘書

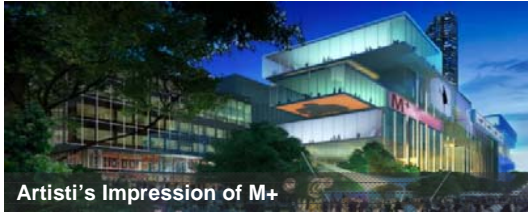
香港城市規劃委員會根據城市規劃條例擬備的西九文化區發展圖則 TOWN PLANNING ORDINANCE, HONG KONG TOWN PLANNING BOARD WEST KOWLOON CULTURAL DISTRICT DEVELOPMENT PLAN



依據西九文化區管理局條例第21(2)(a)條擬備
PREPARED UNDER SECTION 21(2)(a) OF THE WEST KOWLOON CULTURAL DISTRICT AUTHORITY ORDINANCE

圖則編號
PLAN No. S/K20/WKCD/2

WKCD Early Projects



Artisti's Impression of M+

M+ (Phase 1)

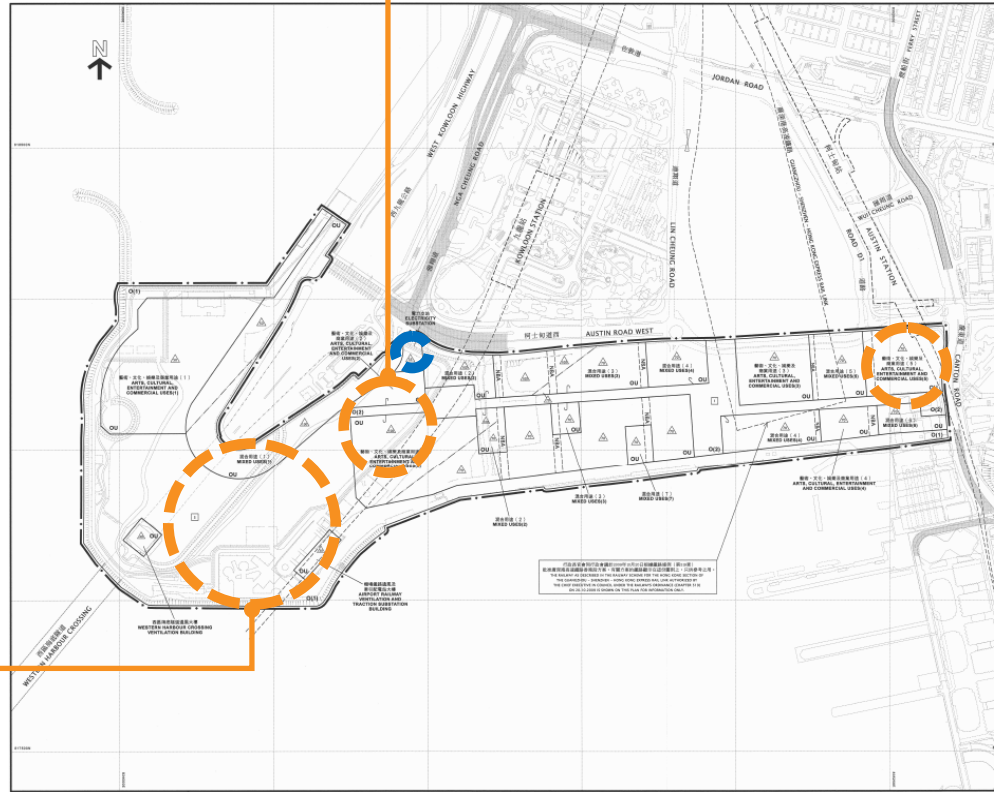
- Design team to be selected
- Due to complete in **2017**



Artisti's Impression of the Park

Park (Phase 1)

- Design team to be selected
- Due to complete in stages starting **2014-15**



Selected design for Xiqu Centre

Xiqu (Phase 1)

- Joint partnership between **Bing Thom Architects** and **Ronald Lu & Partners (Hong Kong) Ltd**
- Due to complete in **2016**

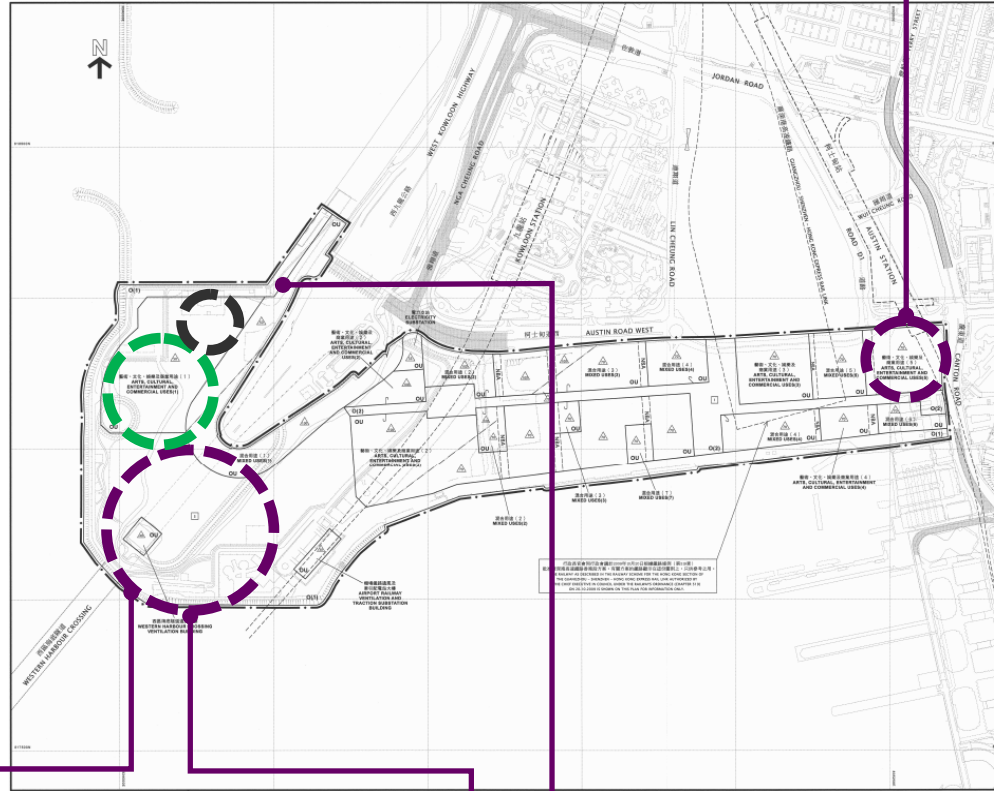
WKCD Sites for Temporary Uses and Events



Freespace Fest



HK Chinese Orchestra
Festive Drums



Bamboo Theatre



Clockenflap

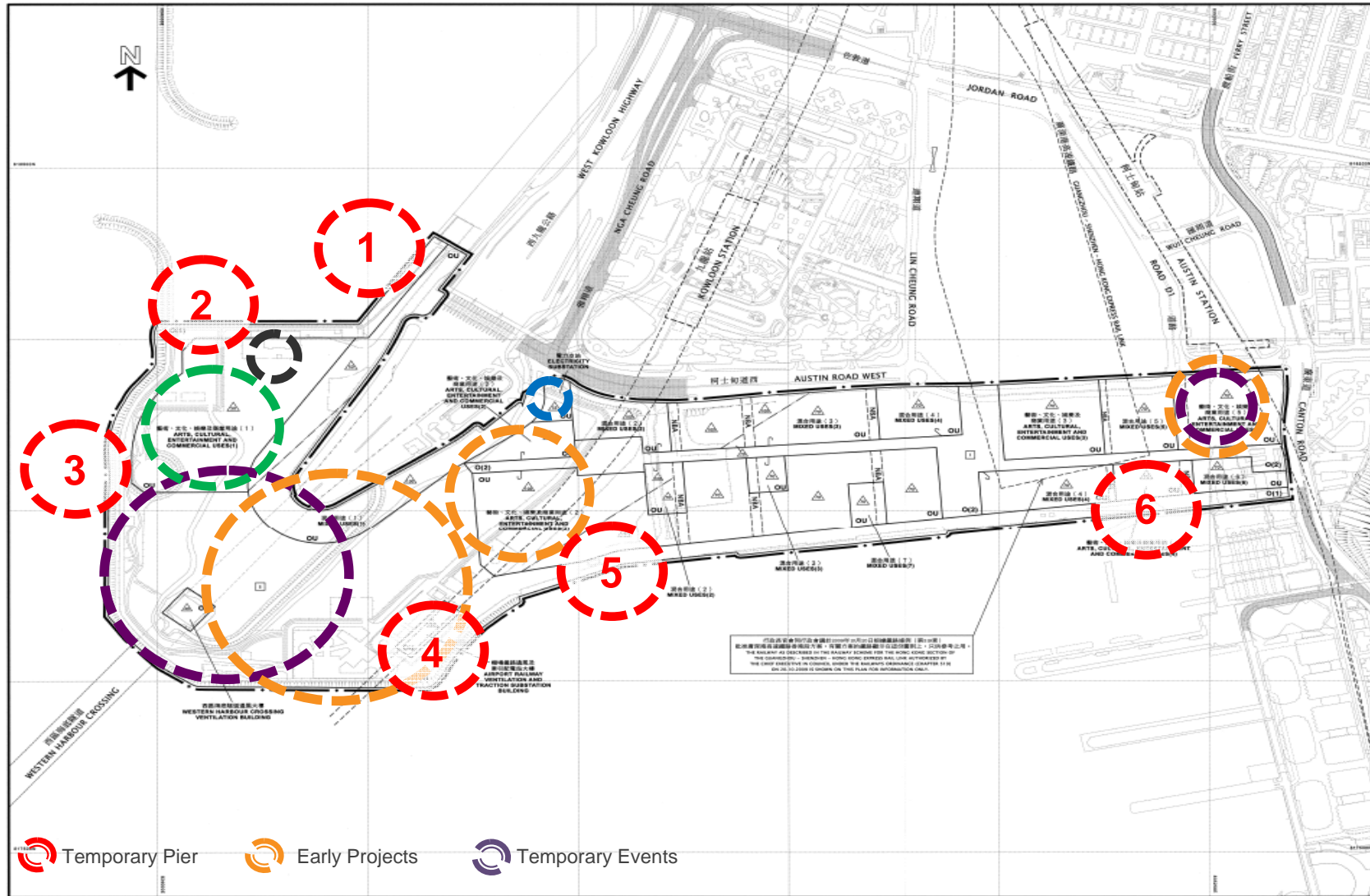


Renaissance



HK Wine & Dine Festival

Temporary Landing Facilities – Possible Locations



Temporary Landing Facilities – Possible Locations



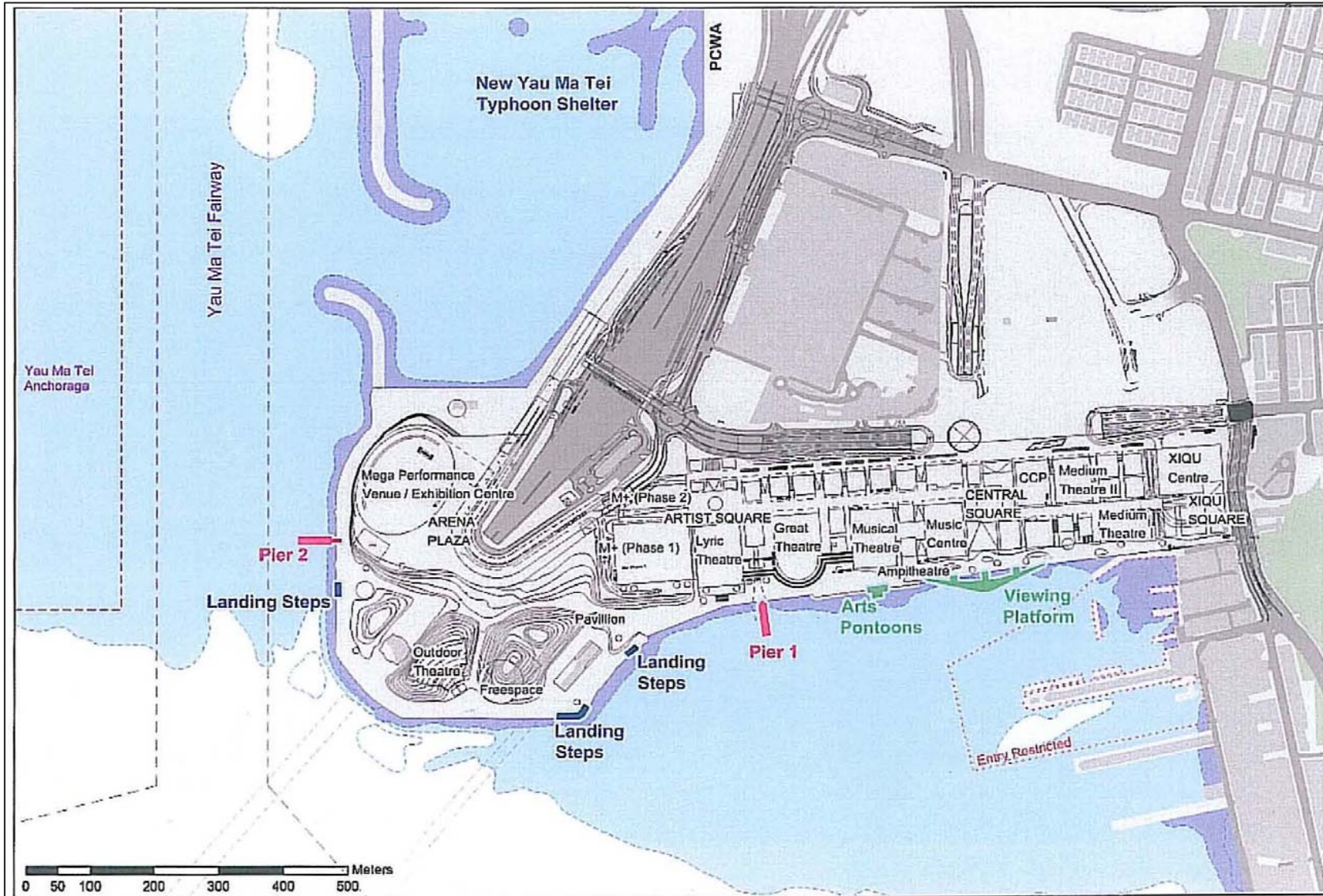
Temporary Landing Facilities – Possible Locations



Foster + Partners' Conceptual Illustration



Long Term Landing Facilities



Longer Term Landing Facilities

Park Design Scope to be Committed

- Concept and Scheme Design for Promenade in the park development and Detailed Design for the Promenade in the Phase 1 Park
- Concept and Scheme Design for Pier and Landing Step with Park Development
- Detailed Design of up to 100m long waterfront landing steps for amenity purpose in Phase 1 Park Area
- Detailed Design of Land side provision for temporary pier to be provided with Phase 1 Park Development

Promenade Design Scope to be Committed

- Scheme Landscape Design for the remaining promenade area including provision for another permanent and temporary pier, viewing platform and floating pontoon

THANK YOU

Locations of Public Piers (Extract from CEDD Data)

