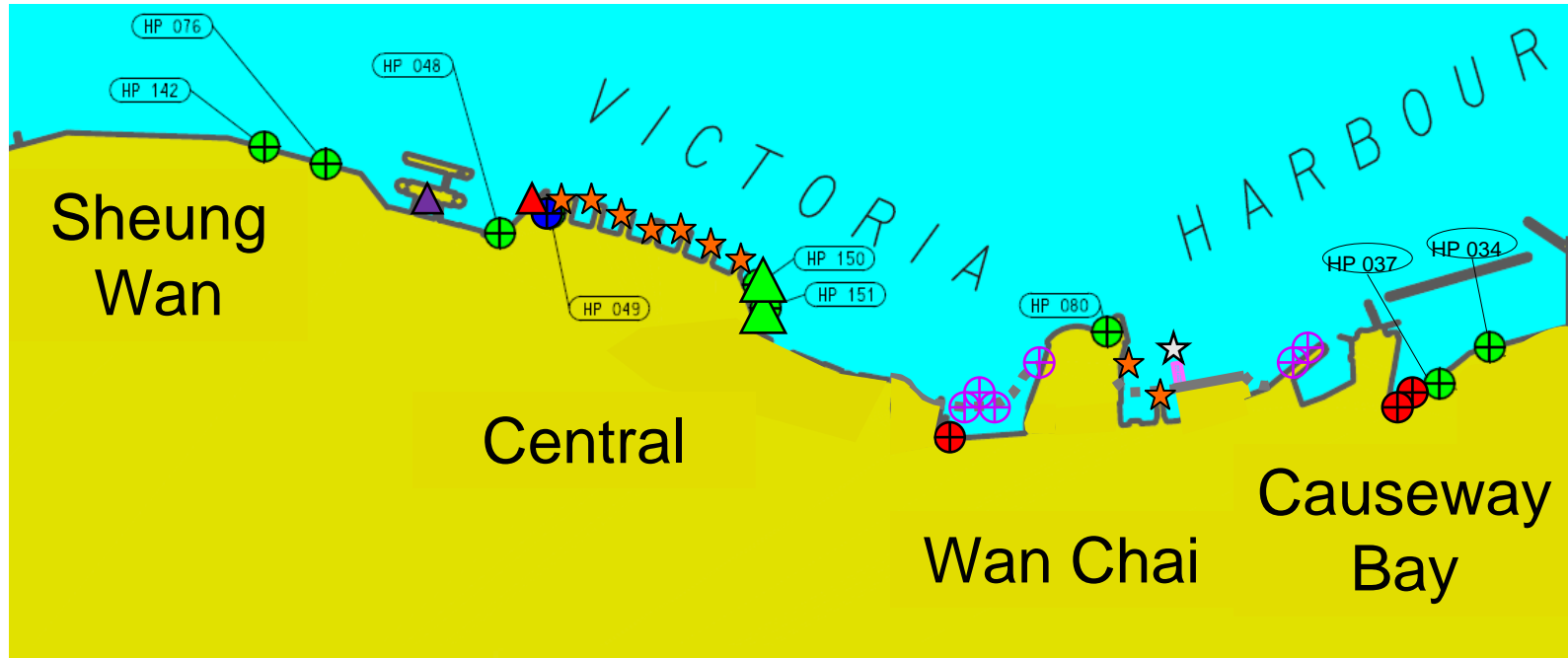


An Overview of Public Landing Facilities in Central and Wan Chai Districts

Landing Facilities in Central and Wan Chai Districts

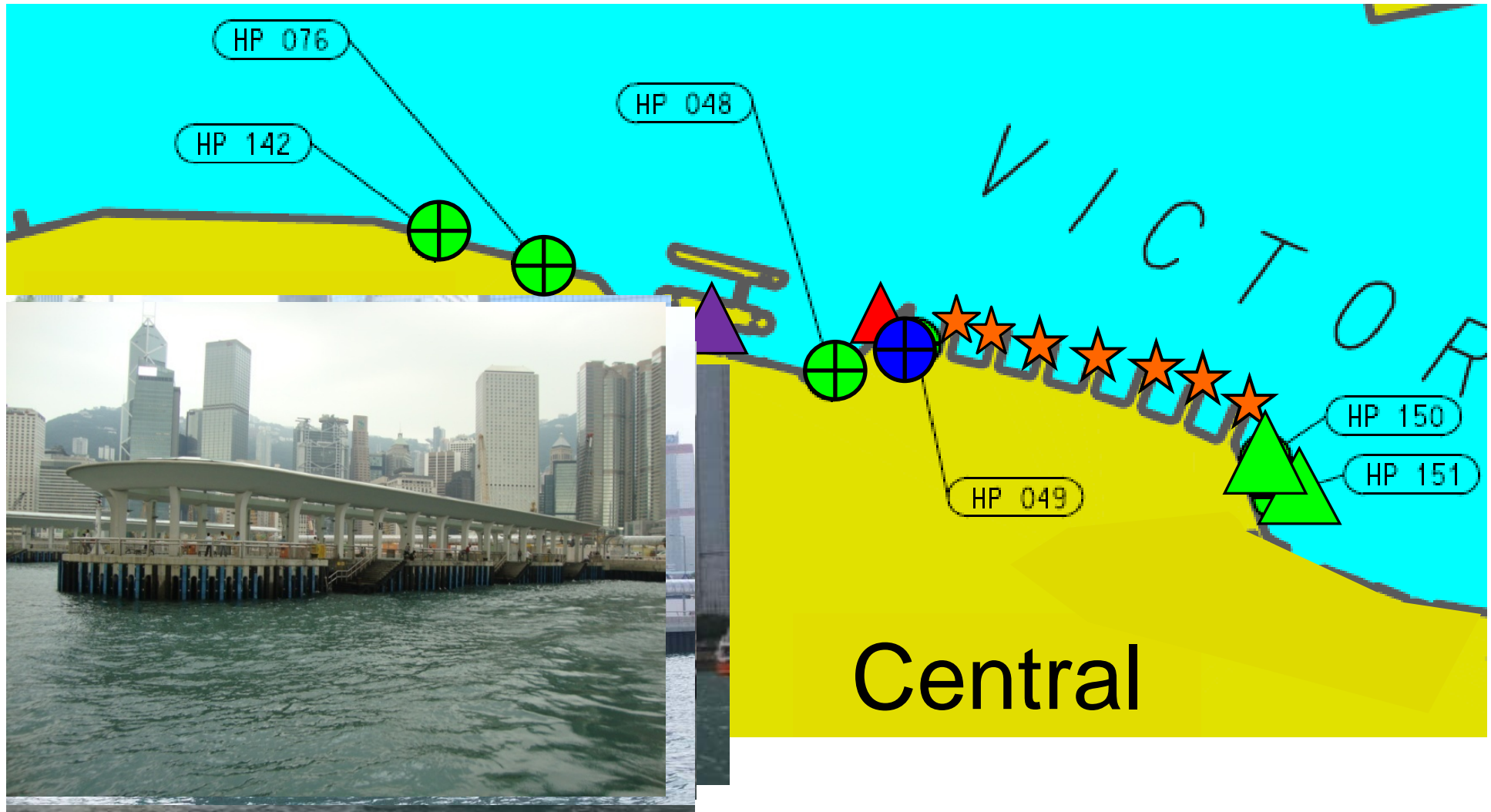








Legend:

- + Public Landing Steps
 + Private Landing Steps
 + Government Landing Steps
- ▲ Government Pier (not for public use)
 ▲ The Hong Kong-Macau Ferry Terminal
 ▲ Public Piers
- ★ Ferry Piers
 ★ New Wan Chai Ferry Pier (under construction)
- + Public Landing Steps (under construction)
 ◆ Future Permanent Waterfront

Public Landing Facilities in Central

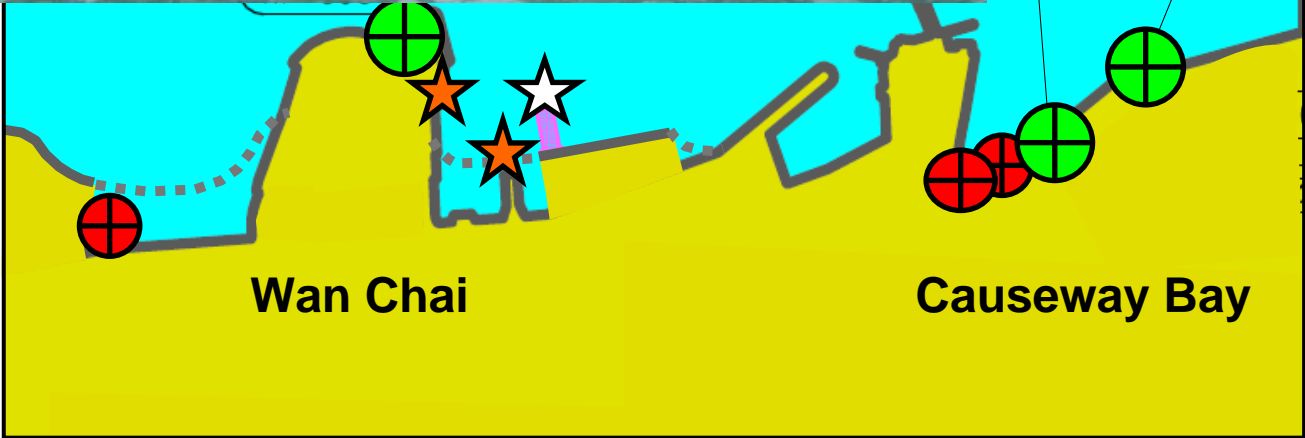
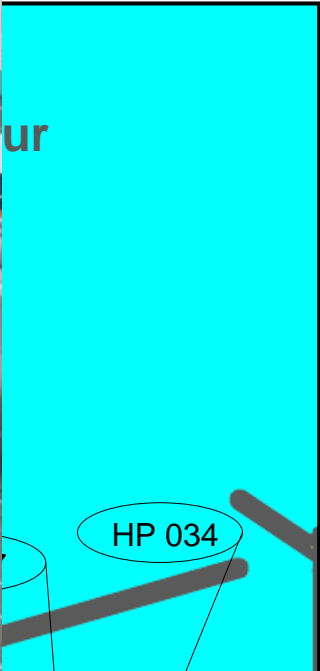
Public Landing Facilities in Central



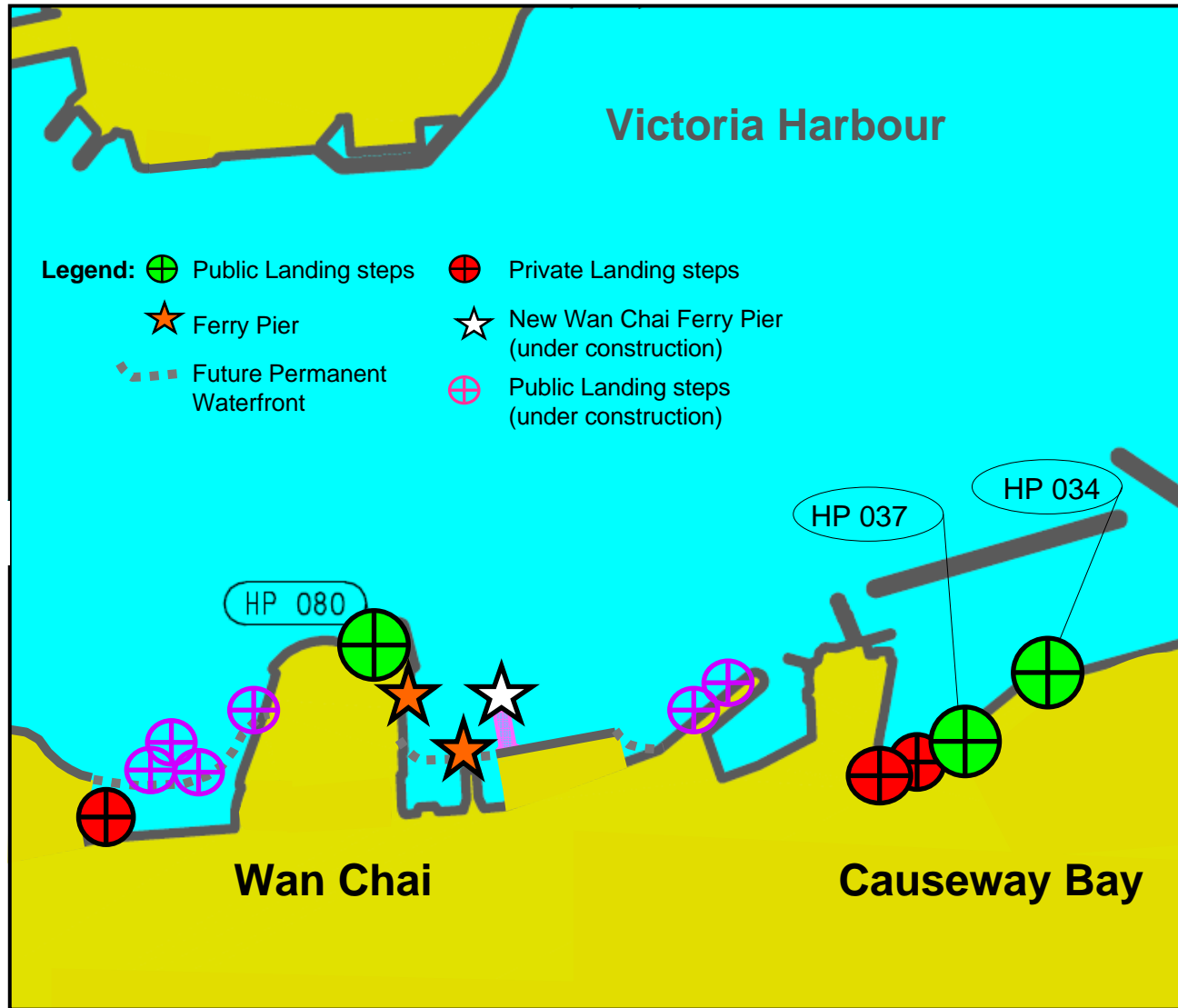
-  Public Landing Steps
-  Government Pier (not for public use)
-  Ferry Piers
-  Government Landing Steps
-  The Hong Kong-Macau Ferry Terminal
-  Public Piers

Public Landing Facilities in Wan Chai and Causeway Bay

and Causeway Bay



Landing Steps at New Wan Chai Waterfront under Construction



~ End ~