

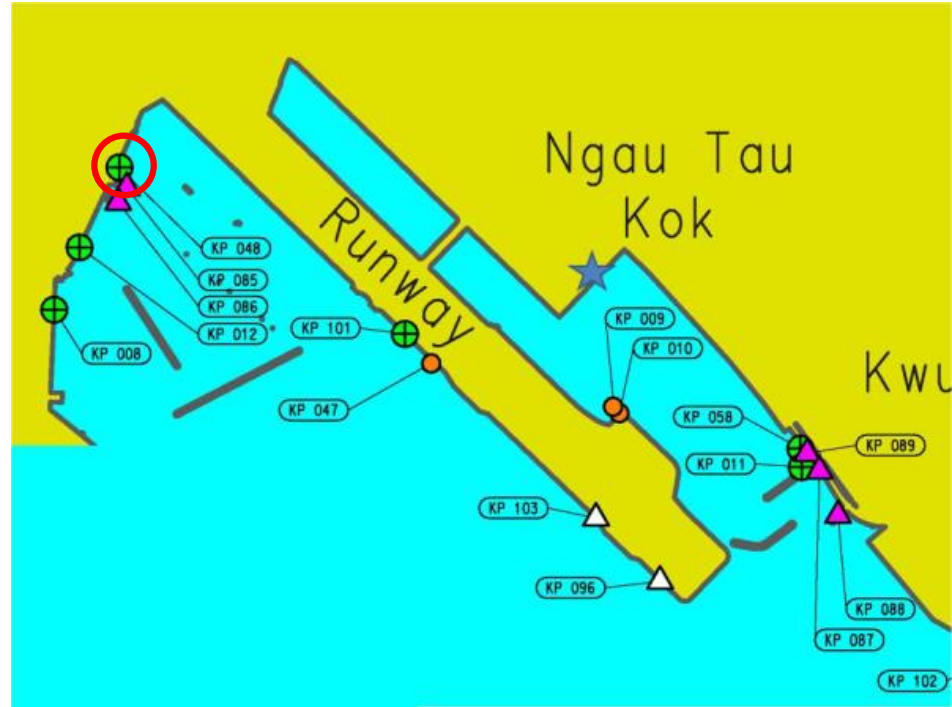
# **Public Landing Facilities within Kai Tak Development**

<b>Area</b>	<b>Marine Structure No.</b>	<b>Name of Facility</b>	<b>(I) Facilities in-use</b>	<b>(II) Facilities under planning</b>	<b>(III) Disused Facilities</b>
To Kwa Wan	KP048	Ma Tau Kok Public Pier	public pier/landing steps		
	KP085	Kowloon City Ferry Pier	cross-harbour ferry pier		
	KP086	Kowloon City Vehicular Ferry Pier			former vehicular ferry pier
	KP012	King Wan Street Landing	public pier/landing steps		
	KP008	To Kwa Wan Landing			public pier/landing steps [not accessible]
Kwun Tong	KP058	Kwun Tong Public Pier	public pier/landing steps		
	KP011	Kowloon Bay Landing No. 1	public pier/landing steps		
	KP087 KP089	Kwun Tong Vehicular Ferry Pier	dangerous goods vehicular ferry pier		
	KP088	Kwun Tong Ferry Pier	cross-harbour ferry pier		
Kai Tak Former Runway	KP101	Kai Tak Landing	fireboat berth cum public landing steps		
	KP047	Kai Tak Pier			former Kai Tak Pier
	KP009 KP010	Kai Tak Fire Boat Landing No. 1 & 2			former fire boat landing
South Apron	★	Kowloon Godown (Private Redevelopment)		Landing steps for public use	



# (I) Facilities in-use

KP 048



## Ma Tau Kok Public Pier

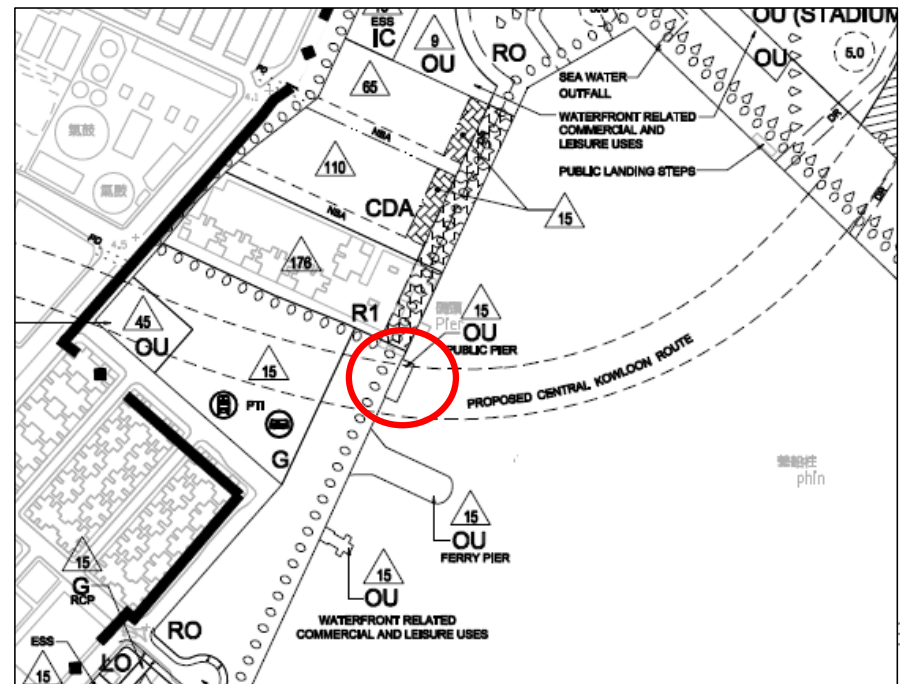
Managed by:

**Transport Department**

Maintained by:

**Civil Engineering and Development Department**

Ancillary Facilities	Check Box
Shelter	✓
Seating Bench	✓
Parking Nearby	✓



The Highways Department will demolish the pier for construction of Central Kowloon Route and, after the works, will reconstruct the pier.



# (I) Facilities in-use

KP 085

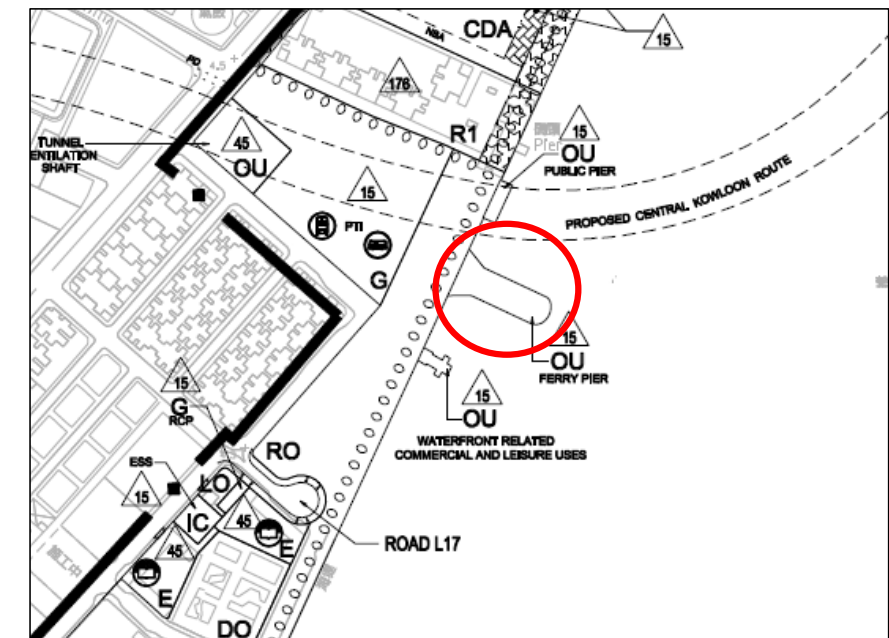
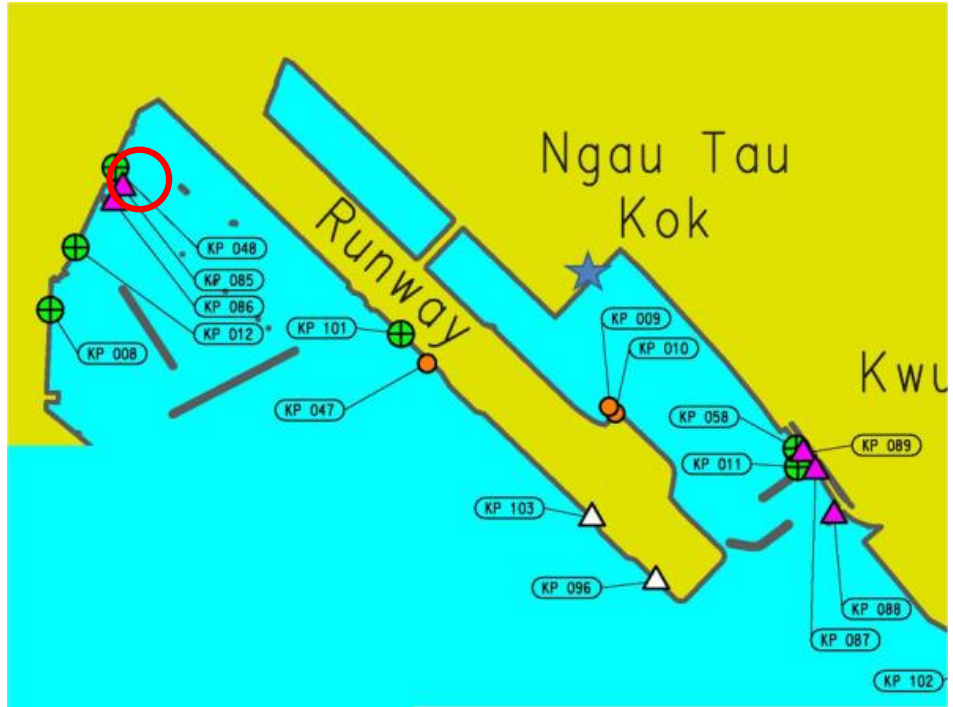


## Kowloon City Ferry Pier

*Operated by: New World First Ferry (to North Point)*

*Managed by: Transport Department*

*Maintained by: Civil Engineering and Development Department (Substructure) & Architectural Services Department (Superstructure)*



Ancillary Facilities	Check Box
Shelter	✓
Seating Bench	✓
Parking Nearby	✓

# (I) Facilities in-use

KP 012



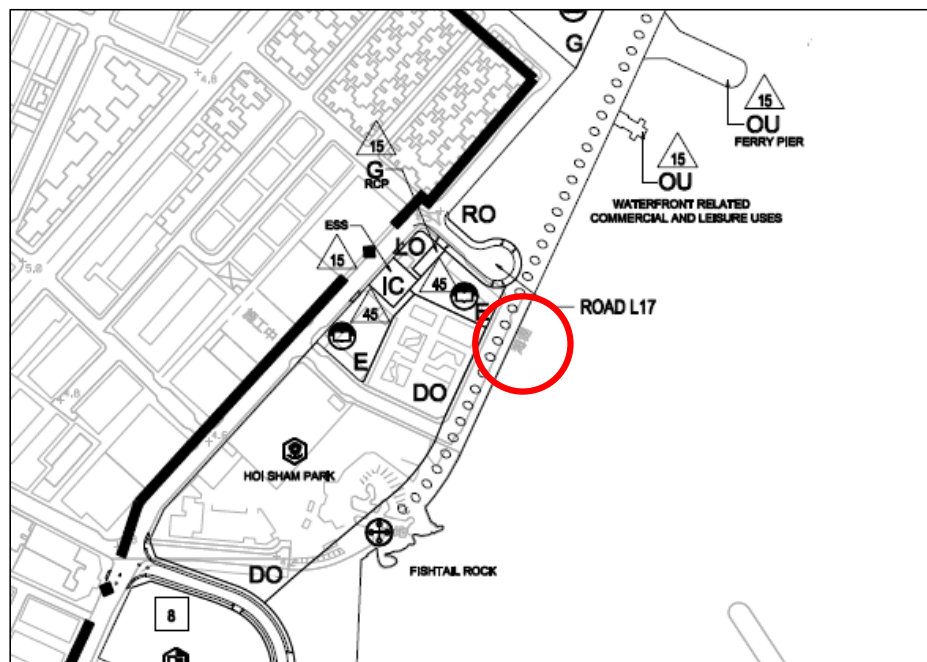
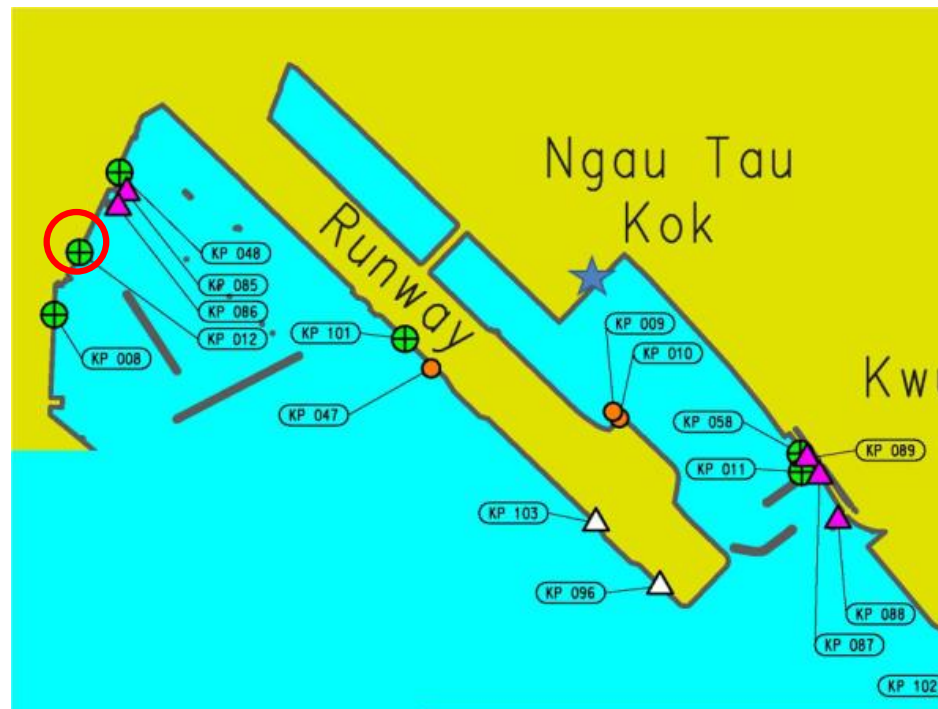
## King Wan Street Landing

Managed by:

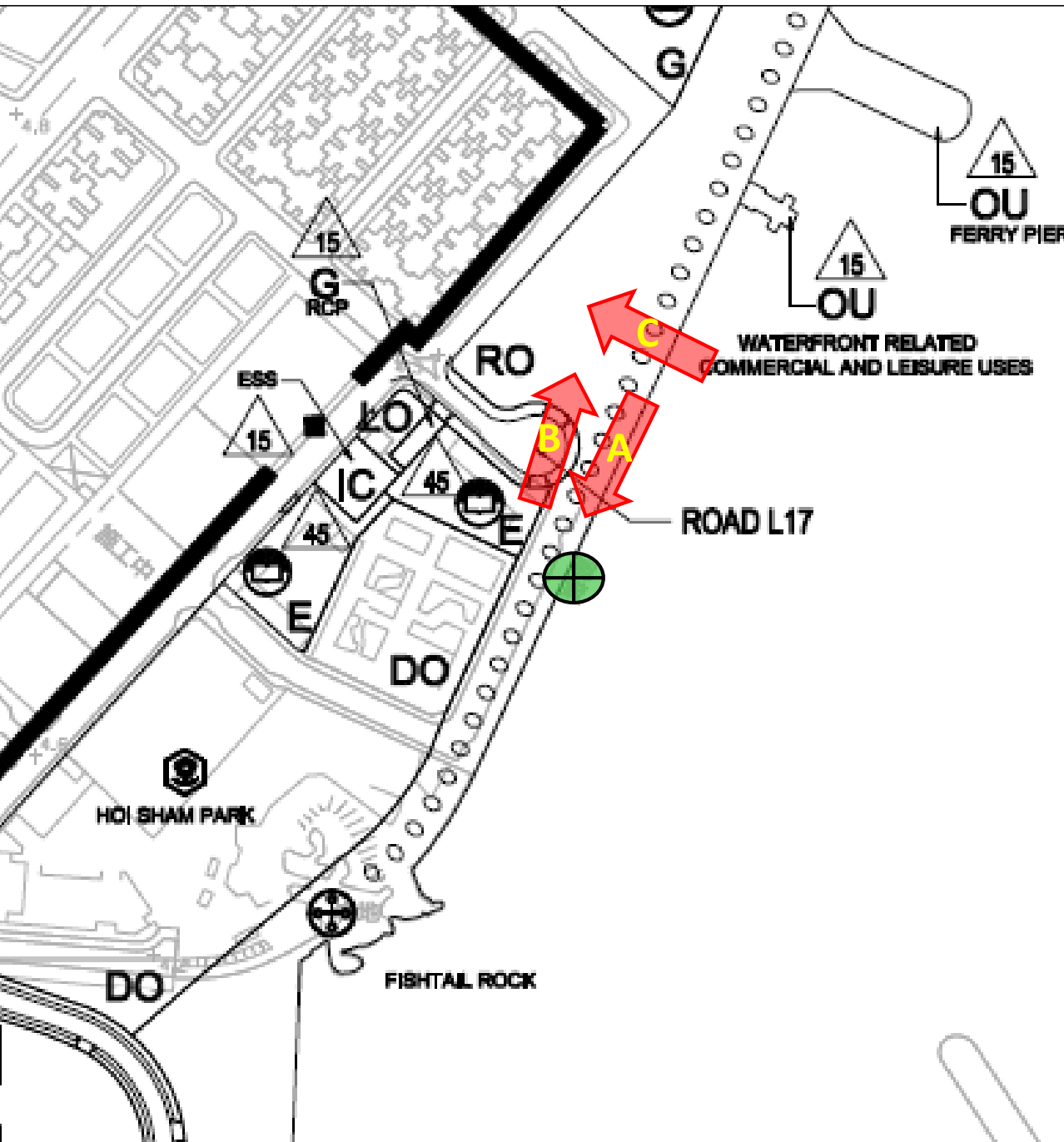
Transport Department

Maintained by:

Civil Engineering and Development Department



Ancillary Facilities	Check Box
Shelter	-
Seating Bench	✓
Parking Nearby	✓

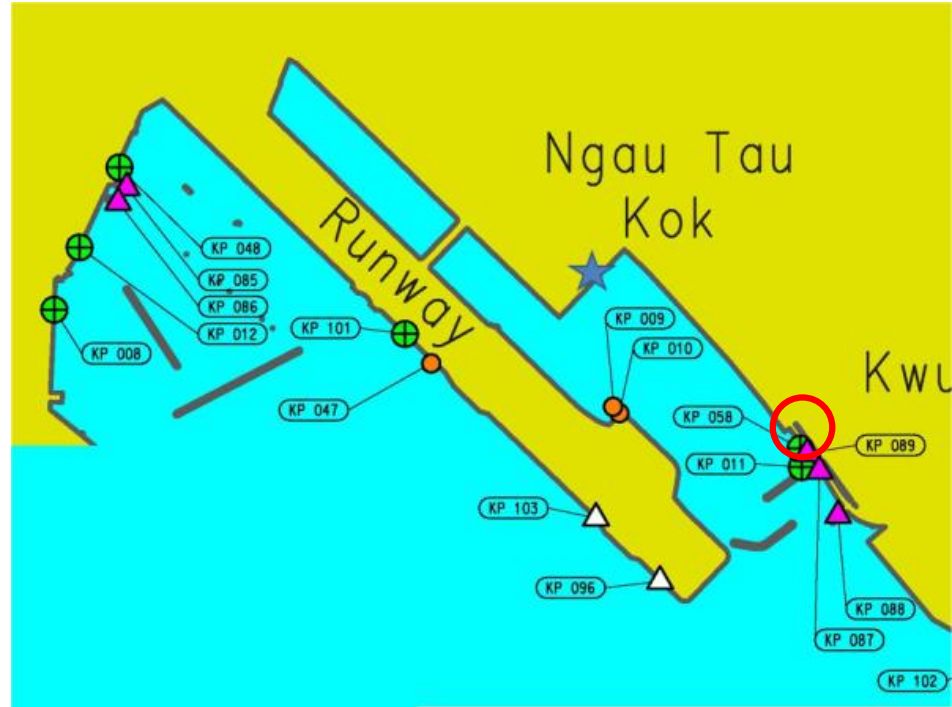


# (I) Facilities in-use

KP 058



KP 058



## Kwun Tong Public Pier

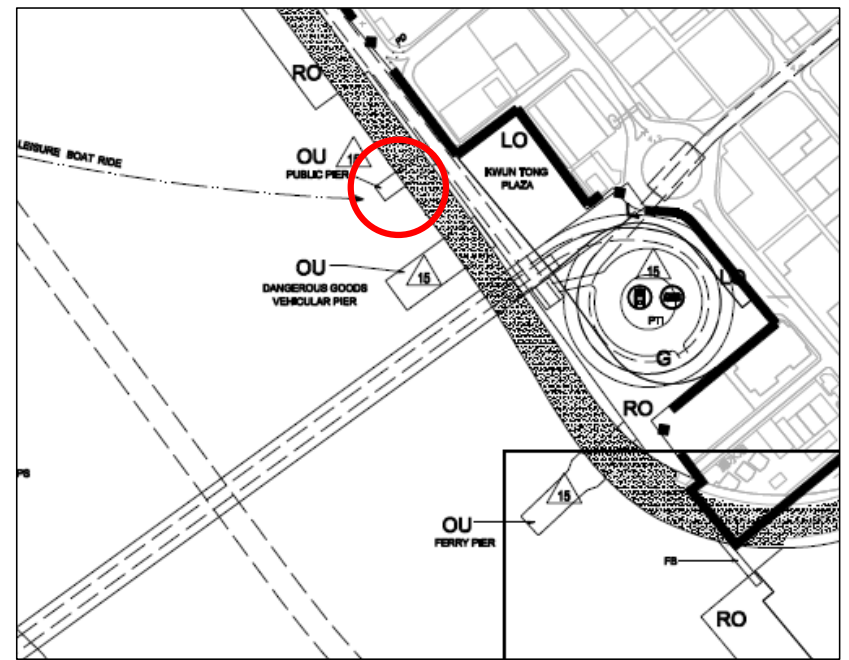
Managed by:

Transport Department

Maintained by:

Civil Engineering and Development Department

Ancillary Facilities	Check Box
Shelter	✓
Seating Bench	✓
Parking Nearby	✓





Kwun Tong Promenade Phase I



There is scheduled ferry to Sai Wan Ho.

# (I) Facilities in-use

KP 011



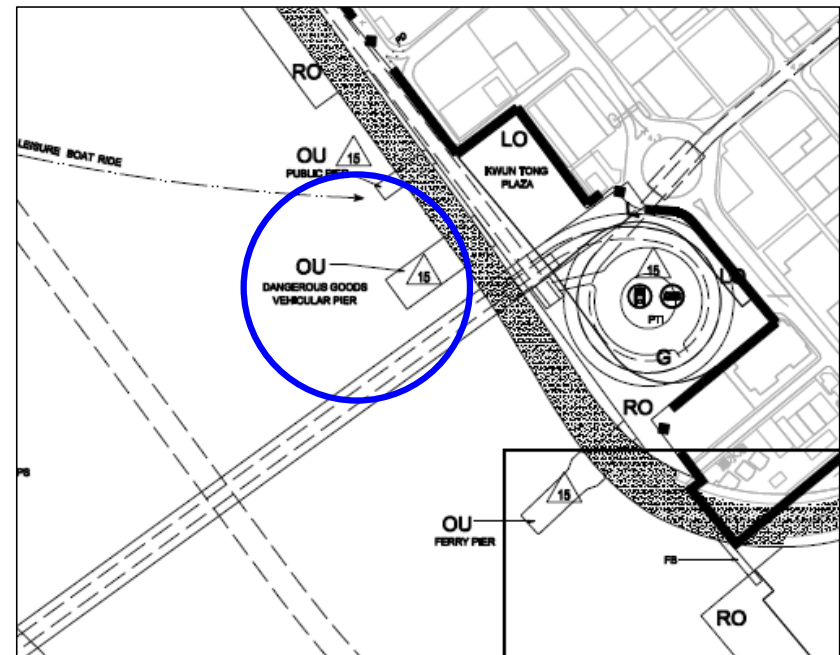
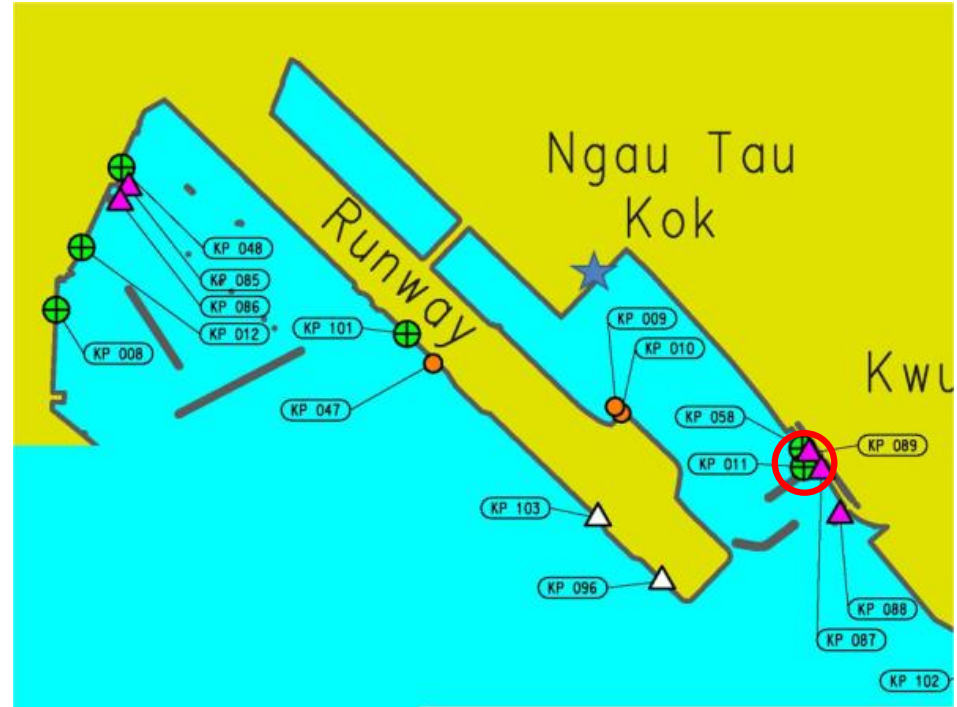
## Kowloon Bay Landing No. 1

Managed by:

Transport Department

Maintained by:

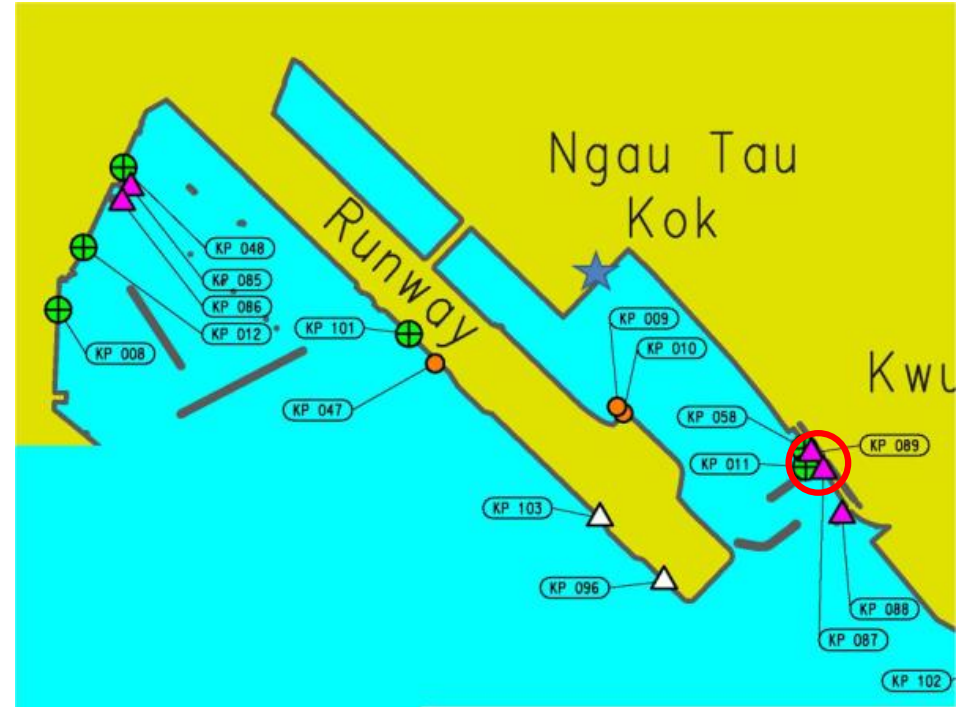
Civil Engineering and Development Department



Ancillary Facilities	Check Box
Shelter	-
Seating Bench	-
Parking Nearby	✓

# (I) Facilities in-use

KP 087 & KP 089



## Kwun Tong Vehicular Ferry Pier (East Pier and West Pier)

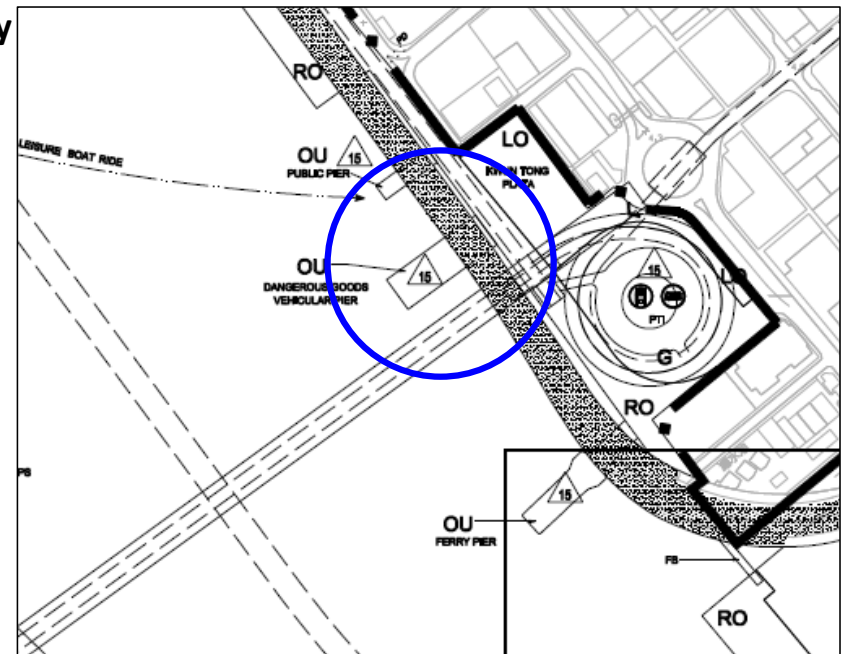
Operated by:

- The Hongkong and Yaumati Ferry (Dangerous Good Vehicular Ferry Pier)
- Kwun Tong Driving School

Managed by: Transport Department

Maintained by:

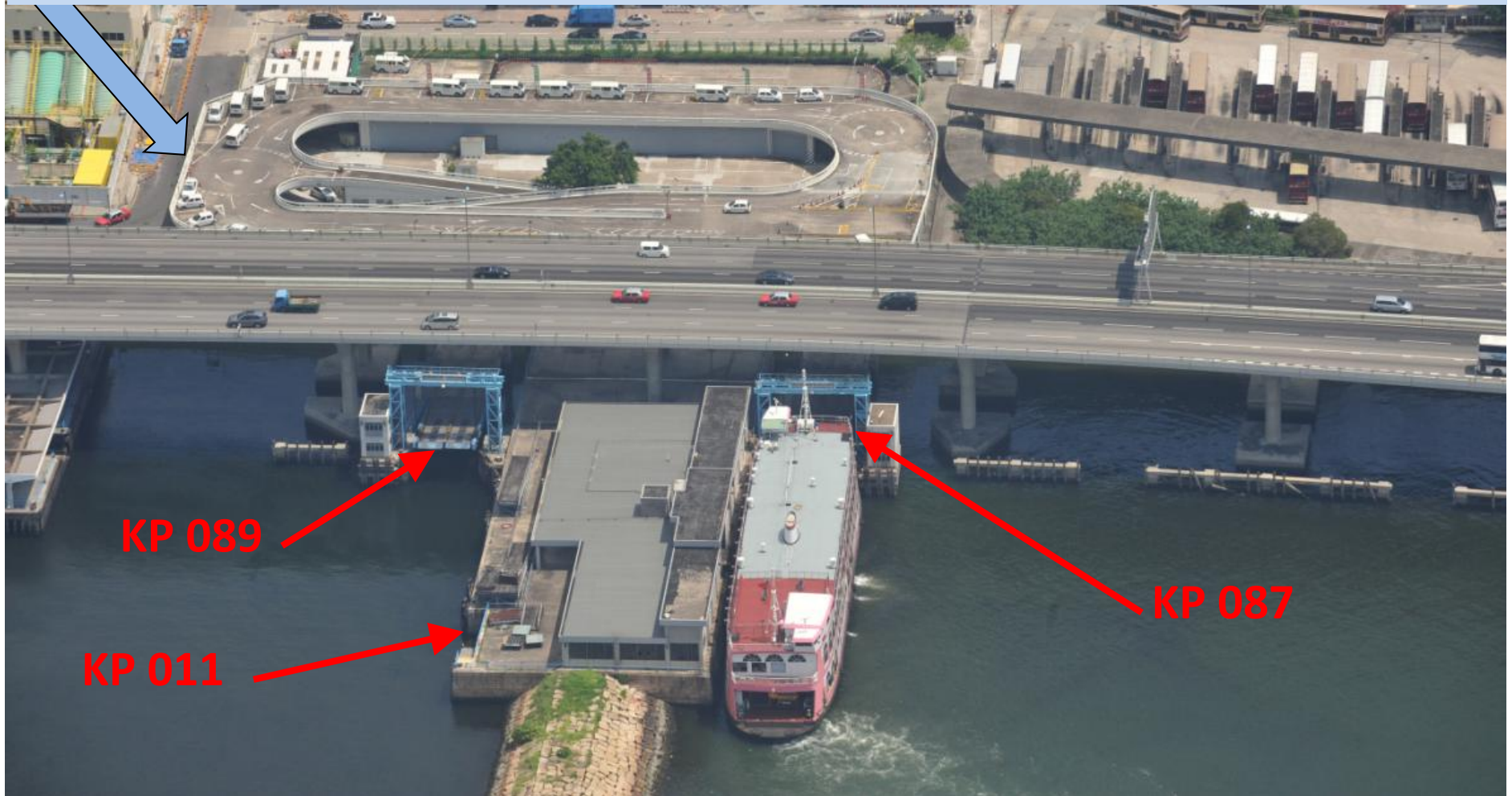
Civil Engineering and Development Department (Substructure) & Architectural Services Department (Superstructure)



Ancillary Facilities	Check Box
Shelter	-
Seating Bench	-
Parking Nearby	✓

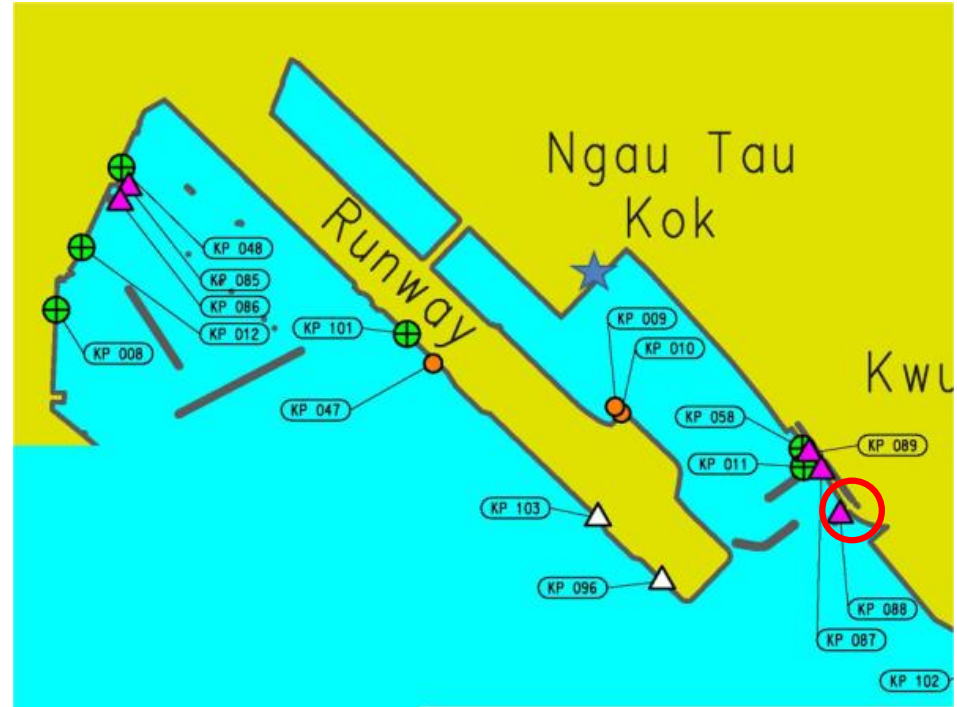
## KP 011, KP 089 & KP 087

- KP 011 is located inside the Kwun Tong Dangerous Goods Vehicular Ferry Piers (K89 & K87).
- Kwun Tong Driving School is located next to K89 & K87 and occupies the upper deck of K89 & K87 as shown in the photo.



# (I) Facilities in-use

KP 088



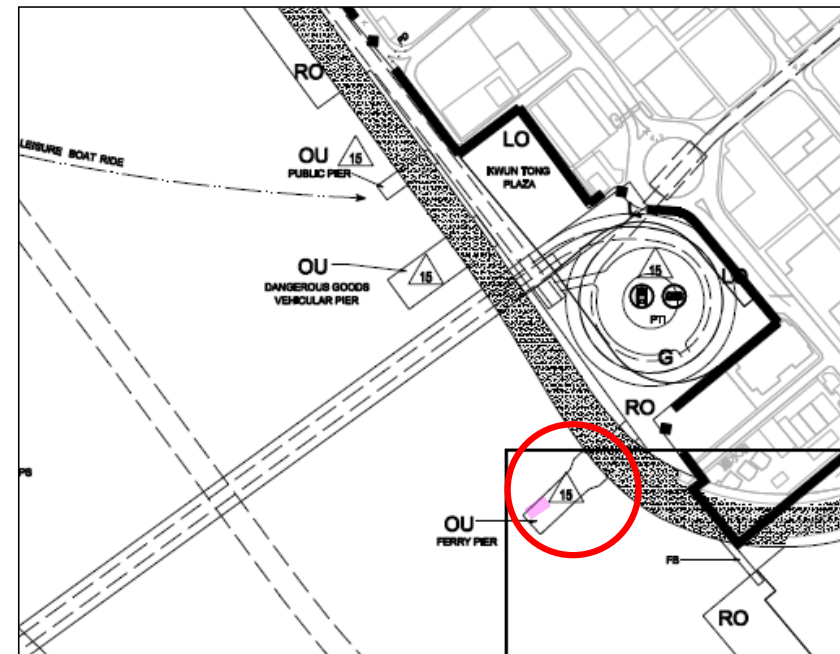
## Kwun Tong Ferry Pier

*Operated by:* Fortune Ferry Company (to North Point)

*Managed by:* Transport Department

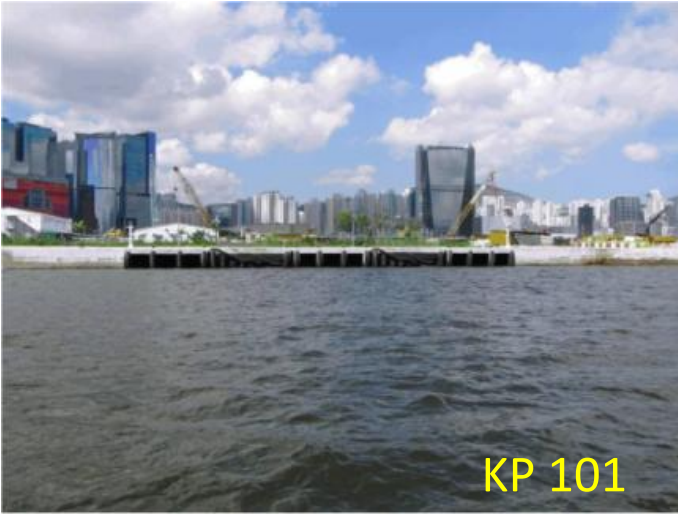
*Maintained by:* Civil Engineering and Development Department (Substructure) & Architectural Services Department (Superstructure)

Ancillary Facilities	Check Box
Shelter	✓
Seating Bench	✓
Parking Nearby	-



# (I) Facilities in-use

KP 101



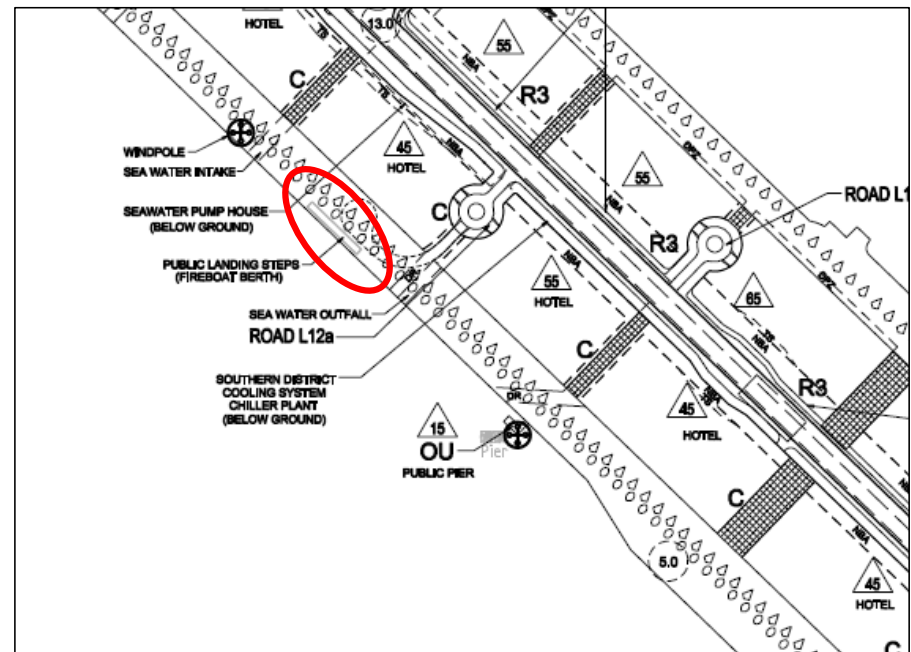
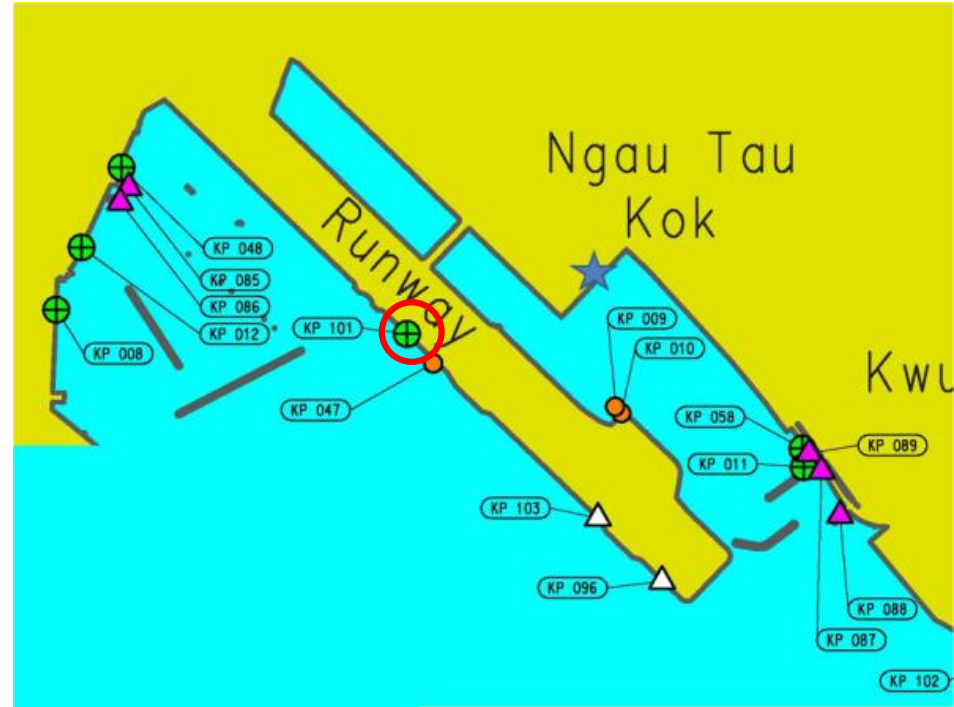
## Kai Tak Landing Steps

Managed by: Transport Department

Maintained by:

Civil Engineering and Development Department

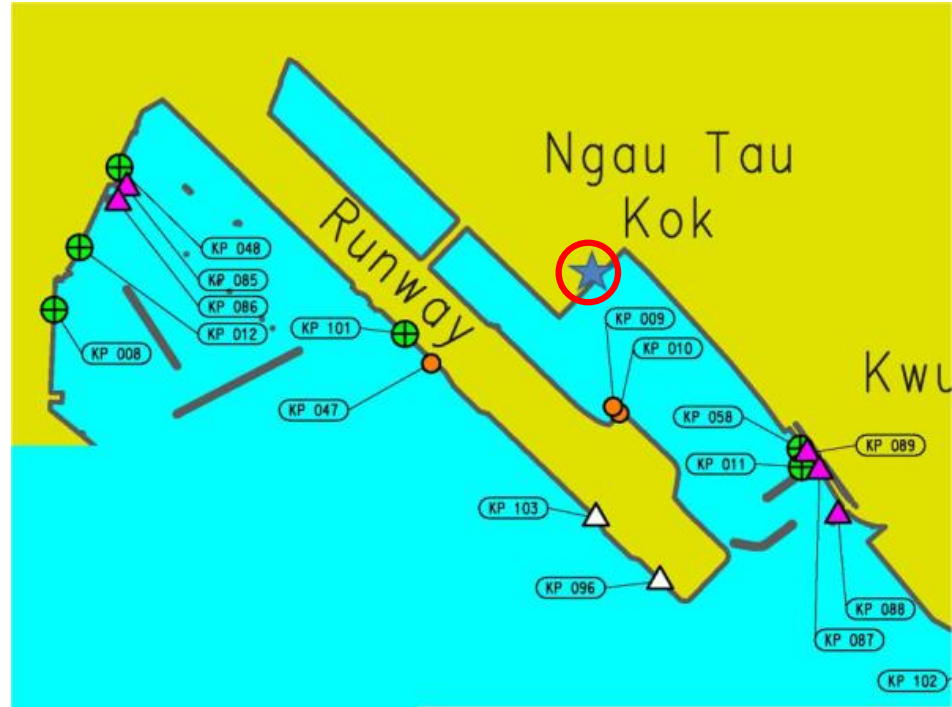
[currently occupied by EMSD (until 2014)]



Ancillary Facilities	Check Box
Shelter	-
Seating Bench	-
Parking Nearby	-

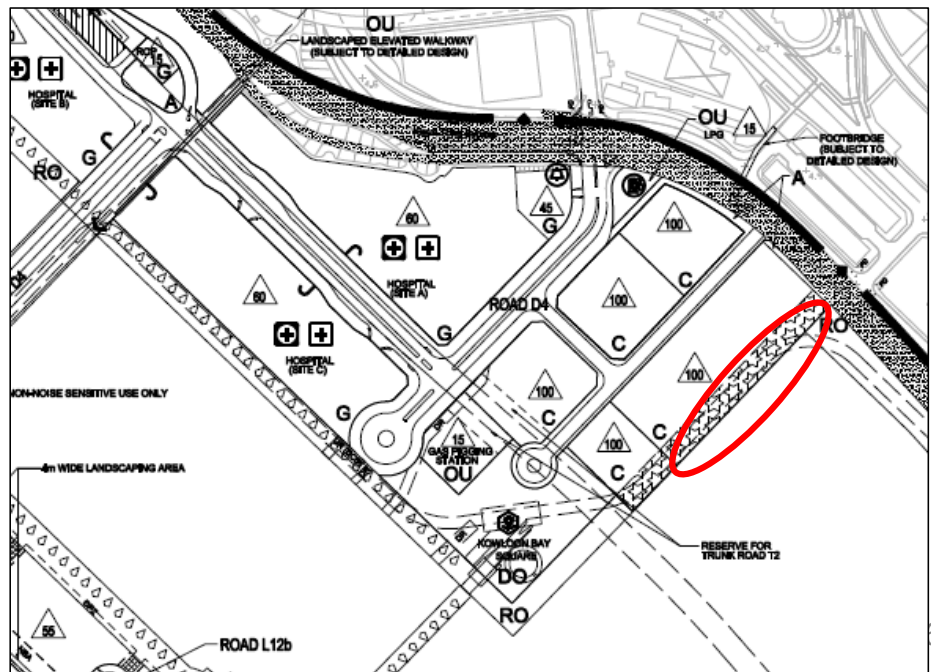


## (II) Facilities under planning (At Kowloon Godown Private Redevelopment)



### Kowloon Godown

- Application for re-zoning in process (private redevelopment)
- Landing steps at seafront promenade for public use

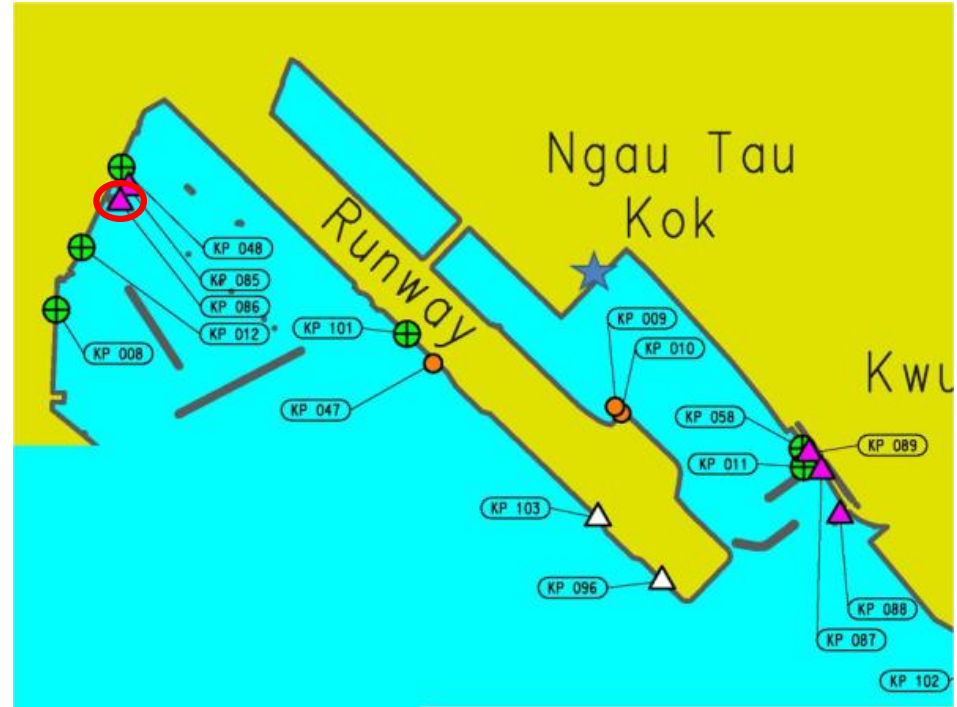


Ancillary Facilities	Check Box
Shelter	-
Seating Bench	-
Parking Nearby	✓



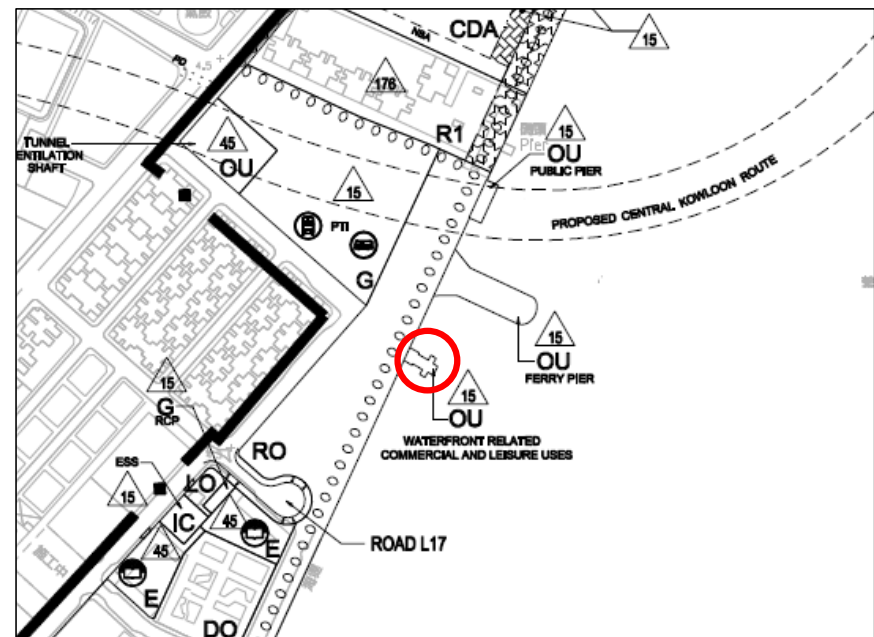
### (III) Disused Facilities

KP 086



**Kowloon City Vehicular Ferry Pier [abandoned]**

Ancillary Facilities	Check Box
Shelter	-
Seating Bench	-
Parking Nearby	✓





The ferry pier is not in-use while the landside facilities are leased out for paid parking.

### (III) Disused Facilities

KP 008



### To Kwa Wan Landing

Managed by:

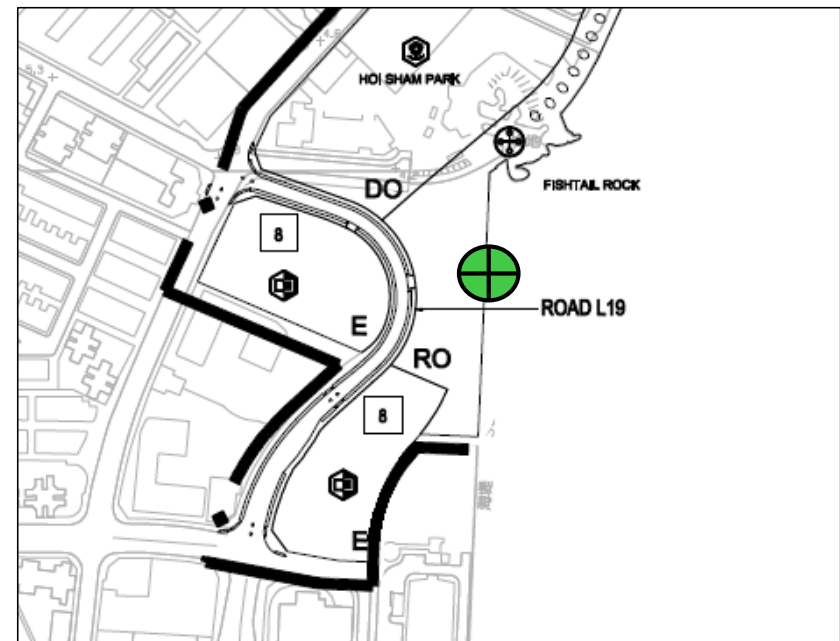
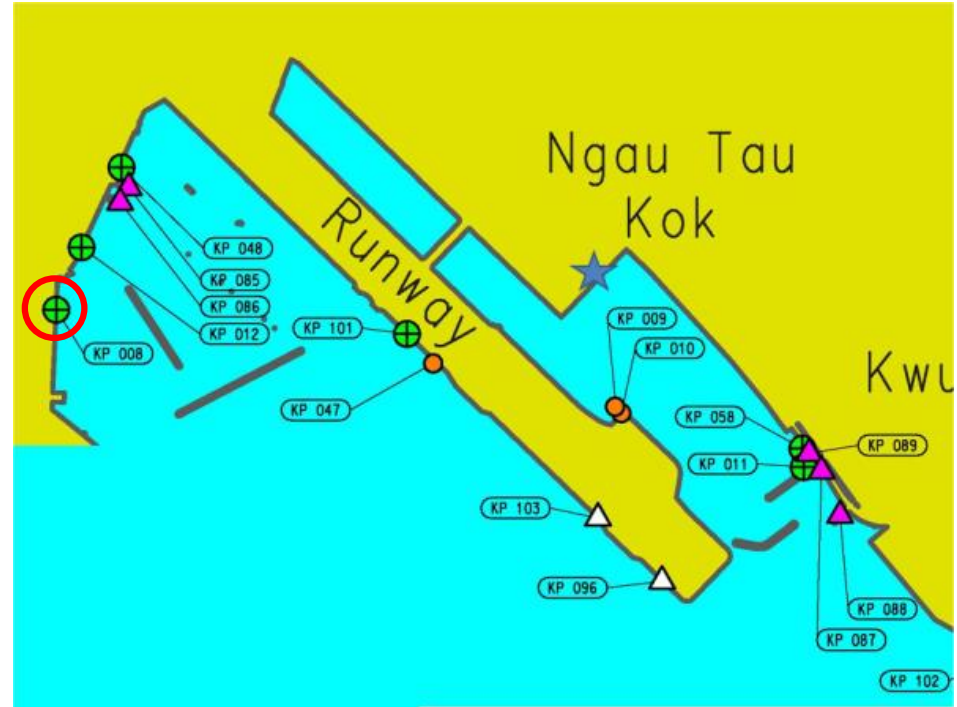
**Transport Department**

Maintained by:

**Civil Engineering and Development Department**

*[located inside a paid parking lot]*

Ancillary Facilities	Check Box
Shelter	-
Seating Bench	-
Parking Nearby	✓





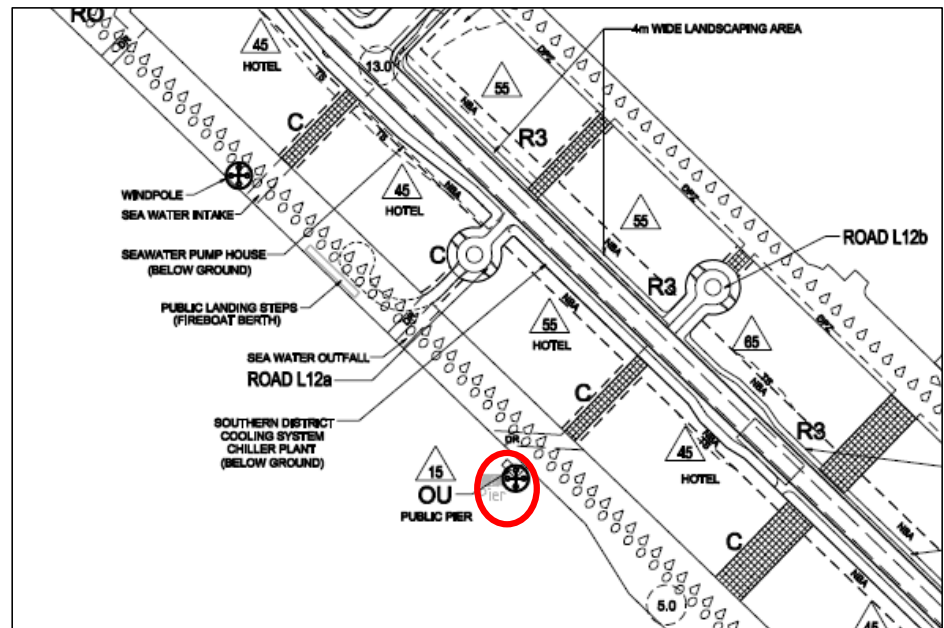
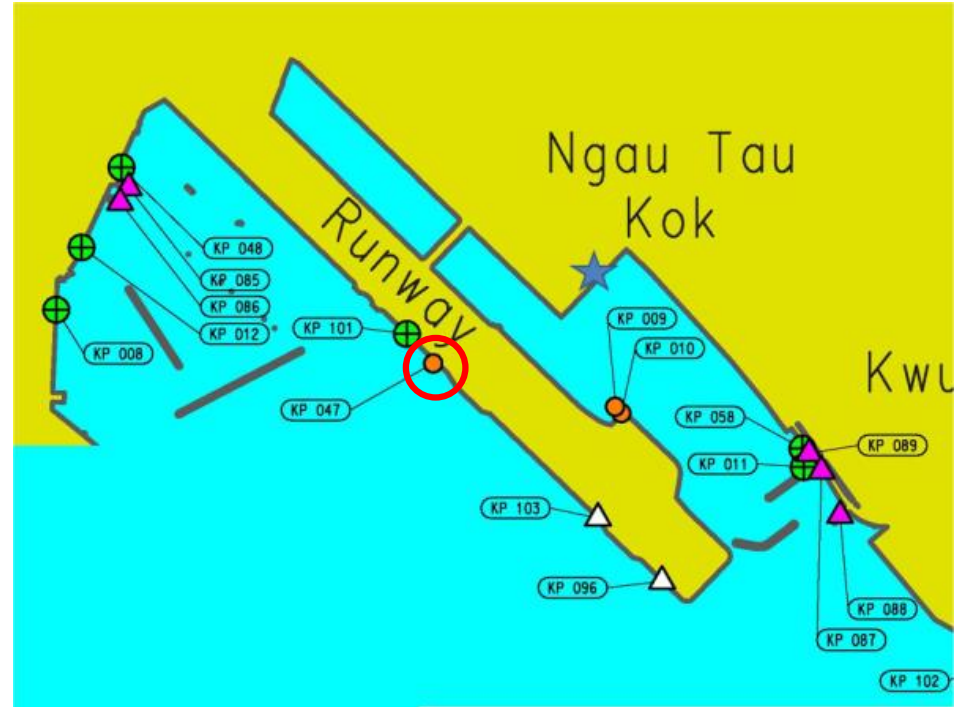
### (III) Disused Facilities

KP 047



KP 047

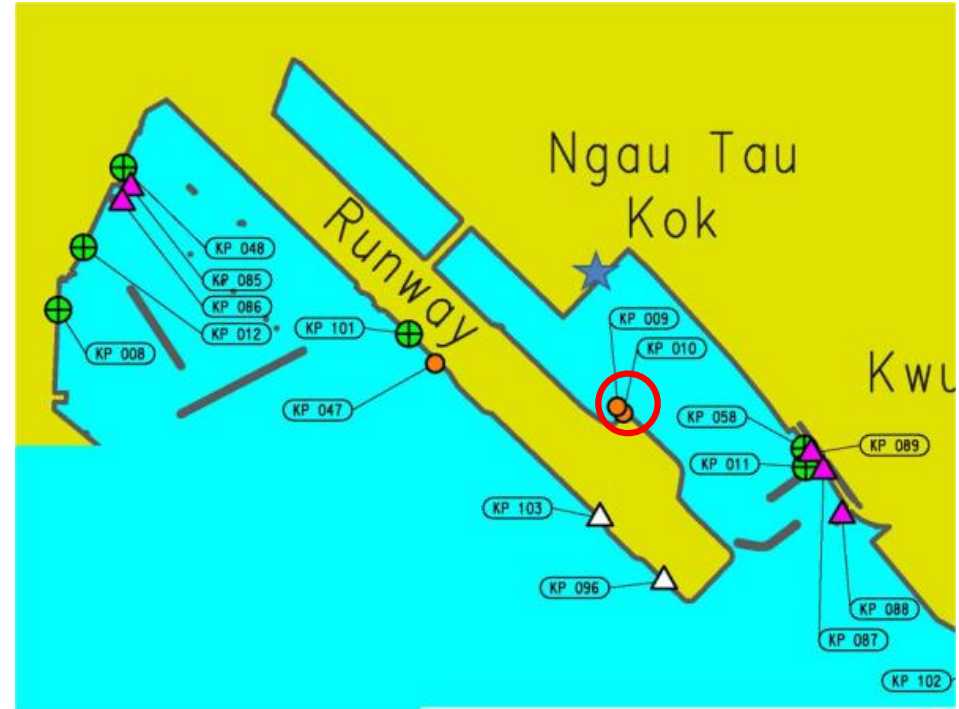
Kai Tak Pier [abandoned]



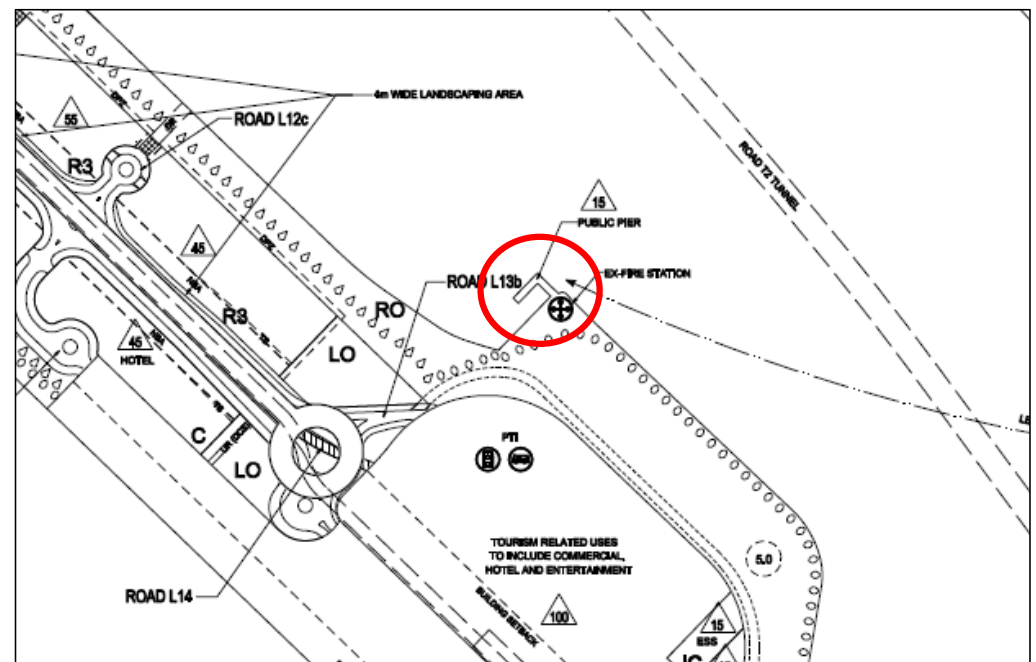
Ancillary Facilities	Check Box
Shelter	-
Seating Bench	-
Parking Nearby	-

### (III) Disused Facilities

KP 009 & KP 010



### Kai Tak Fire Boat Landing No. 1 & 2 [abandoned]



Ancillary Facilities	Check Box
Shelter	-
Seating Bench	-
Parking Nearby	-





The End