



An Overview of Public Landing Facilities around Victoria Harbour

**Harbour Unit, Development Bureau
Civil Engineering and Development Department
Transport Department
Marine Department
August 2012**



Outline

- a) Types of Public Landing Facilities
 - a) Piers
 - b) Landing Steps
- b) Current situation of public landing facilities in the harbour
- c) Means of enhancing the provision of public landing facilities in the harbour





Piers

- ❖ Design and component facilities
 - ☞ one or more sets of landing steps
 - ☞ berths at the head and/or the two sides
 - ☞ pier head and the shore connected by a catwalk and/or an embankment
- ❖ Land use zoning
 - ☞ usually "Other Specified Uses" annotated "Pier" ("OU (Pier)")



Pier Head

Catwalk



Landing Steps

- ❖ Design and component facilities
 - ☞ staircase-like structures provided along / embedded in a seawall
- ❖ Land use zoning
 - ☞ mostly either "O" or "G/IC"

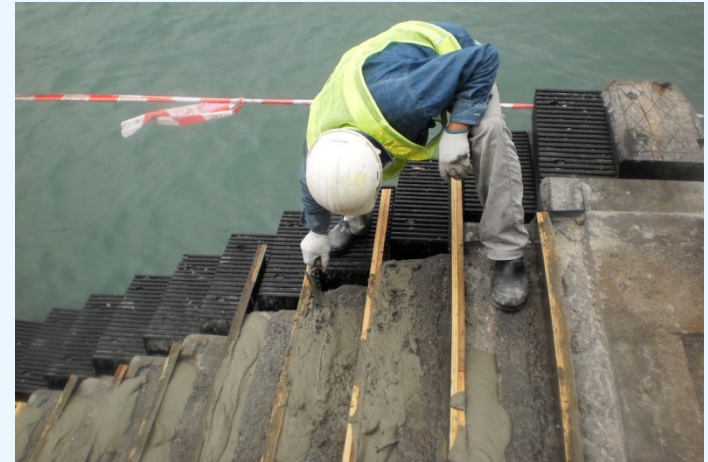




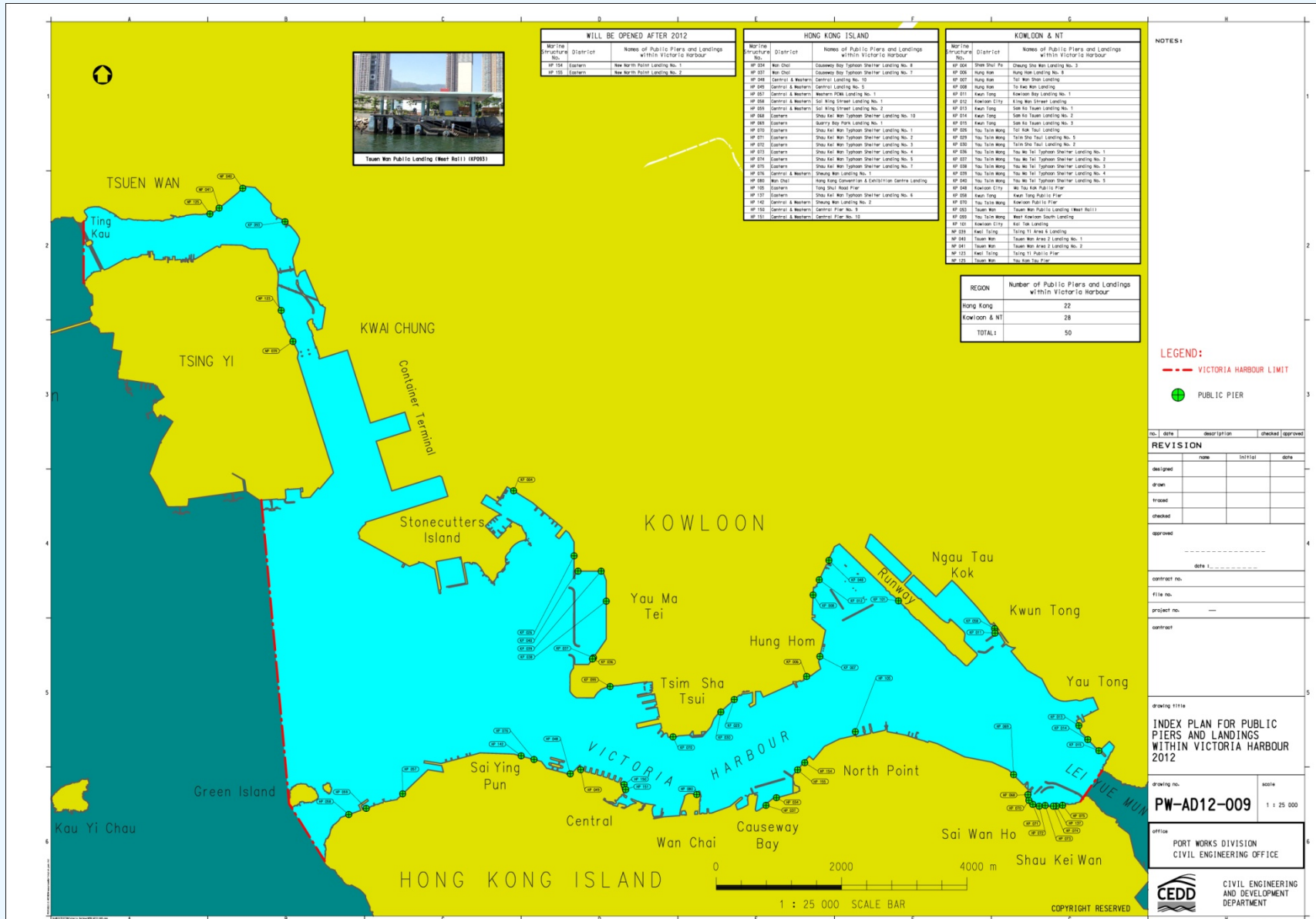
Roles of Government Departments

- ❖ Construction and maintenance: CEDD
 - ∞ concrete repair, repair/improvement of fender system and repair of other pier furniture

- ❖ Operation and Management: MD and TD
 - ∞ MD: overseeing berthing of vessels
 - ∞ TD: ad-hoc checks and investigation, coordinate departments for joint actions



Current Situation of Public Landing Facilities in the Harbour



Popular Piers and Landing Facilities in the Harbour



Kowloon Public Pier



Ma Tau Kok Public Pier



Central Pier No.9



King Wan Street Landing



Facility Conditions

- ❖ Generally satisfactory
- ❖ Barrier-free facilities
 - ⌘ non-slip nosing
 - ⌘ colour contrast to stairs
 - ⌘ handrail
 - ⌘ tactile warning strip



Handrail

Tactile warning strip

Means of Enhancing Provision of Public Landing Facilities



- ❖ More holistic planning, design and provision of landing facilities
 - (i) Planning for new public landing facilities*
 - (ii) Enhancement of existing public landing facilities*
 - (iii) Guidelines for the design of public landings and provision of ancillary facilities*

(i) Planning for New Public Landing Facilities



- ❖ *Ensure adequate provision of marine access to the new prominent harbourfront areas*
 - ❧ *Kai Tak*
 - ❧ *West Kowloon Cultural District*
 - ❧ *Central and Wanchai reclamation areas*

- ❖ *Make provisions at the planning, design or construction stages*
 - ❧ *availability of marine access points*
 - ❧ *future demand for connectivity*

(i) Planning for New Public Landing Facilities



Issues for discussion:

- ❖ *Provision of new landing facilities*
 - ⌘ *genuine need given the huge construction cost involved*
 - ⌘ *an “overriding public need” if the construction involves reclamation*

- ❖ *Priority for new harbourfront areas*
 - ⌘ *should water-land interface situation of the new harbourfront areas be accorded priority for review*



(ii) Enhancement of Existing Public Landing Facilities

❖ *Critical review of existing facilities*

- ❧ *physical conditions*
- ❧ *mode of operation*
- ❧ *rate of utilisation*

❖ *Enhancement initiatives in phases*

- ❧ *subject to resources availability and need and urgency of works*
- ❧ *refurbishment of landing facilities*
- ❧ *provision of ancillary facilities*



(ii) Enhancement of Existing Public Landing Facilities

Issues for discussion:

- ❖ *Priority for review and improvement*
 - ⌘ *subject to resources constraints*
 - ⌘ *which pier(s)/landing step(s) / particular district*

- ❖ *Key selection criteria*
 - ⌘ *popularity or utilization rate of the landing facilities*
 - ⌘ *urgency for refurbishment on operational grounds*
 - ⌘ *prominence of location*
 - ⌘ *proximity to public activity nodes, etc.*



(iii) Guidelines for the Design of Public Landings and Provision of Ancillary Facilities

- ❖ *Possible areas of enhancement from users' point of view*
 - ❧ *exterior design*
 - ❧ *accessibility and connectivity*
 - ❧ *provision of ancillary facilities*

- ❖ *Broad guidelines*
 - ❧ *facilitate planning of new landing facilities*
 - ❧ *provide reference for advising harbourfront projects*



(iii) Guidelines for the Design of Public Landings and Provision of Ancillary Facilities

Issues for discussion:

- ❖ *How to provide input to work out the broad guidelines / checklist*



- End -