

Task Force on Water-land Interface

For discussion
on 12 November 2012

TFWL/05/2012

An Overview of Public Landing Facilities within Kai Tak Development

PURPOSE

This paper provides an overview of public landing facilities within Kai Tak Development (KTD).

BACKGROUND

2. Further to the third meeting of the Task Force on Water-Land Interface on 3 August 2012, Civil Engineering and Development Department was requested to provide the Task Force with an overview of public landing facilities in KTD for information to facilitate further discussion.

CURRENT SITUATION

3. At present, there are 14 public piers and landing steps within KTD. A set of PowerPoint slides showing their approximate locations and the current situation is attached in **Annex**.

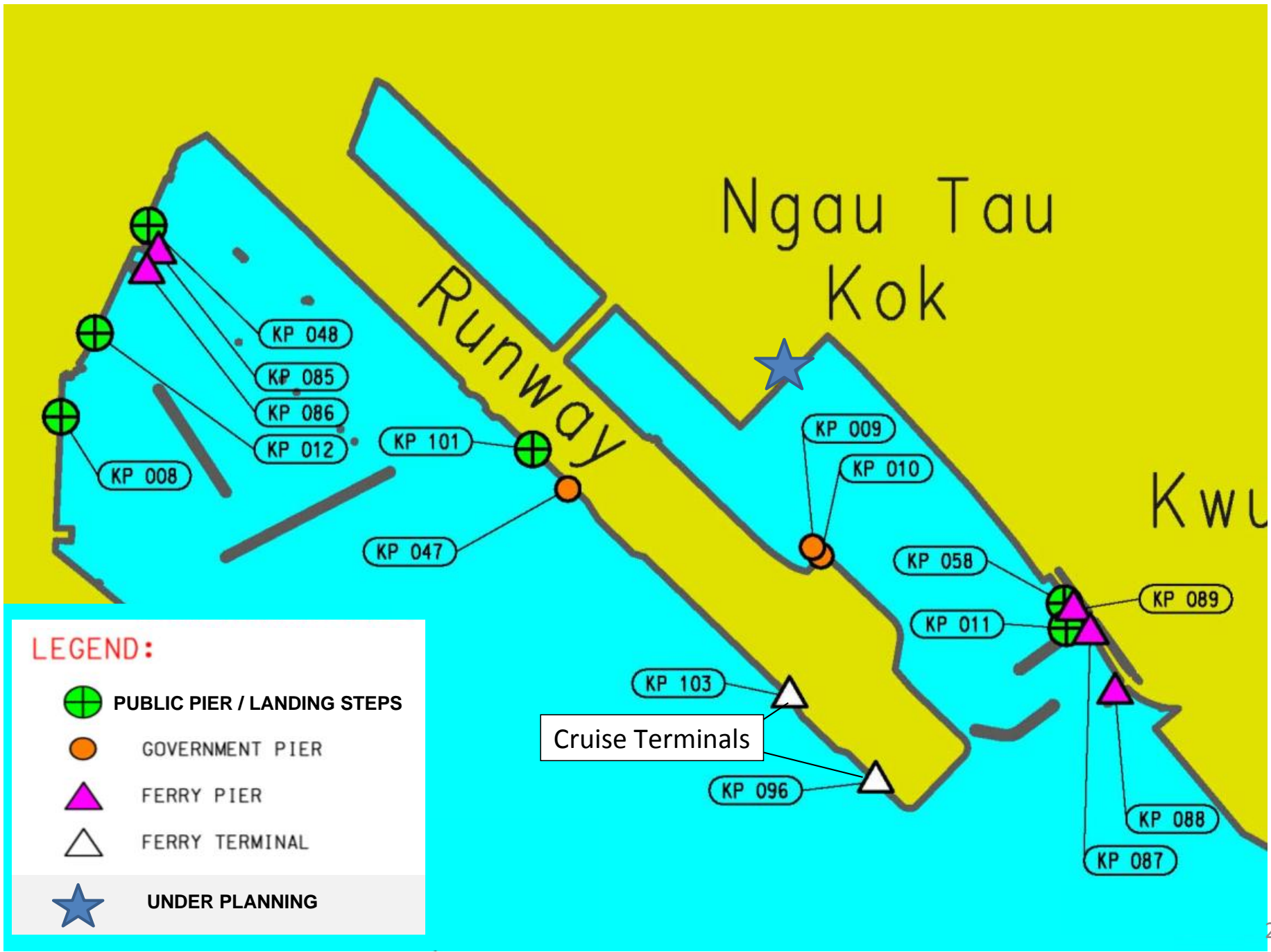
ADVICE SOUGHT

4. Members are advised to note the current situation of public landing facilities within KTD.

**Civil Engineering and Development Department
October 2012**

Public Landing Facilities within Kai Tak Development

Area	Marine Structure No.	Name of Facility	(I) Facilities in-use	(II) Facilities under planning	(III) Disused Facilities
To Kwa Wan	KP048	Ma Tau Kok Public Pier	public pier/landing steps		
	KP085	Kowloon City Ferry Pier	cross-harbour ferry pier		
	KP086	Kowloon City Vehicular Ferry Pier			former vehicular ferry pier
	KP012	King Wan Street Landing	public pier/landing steps		
	KP008	To Kwa Wan Landing			public pier/landing steps [not accessible]
Kwun Tong	KP058	Kwun Tong Public Pier	public pier/landing steps		
	KP011	Kowloon Bay Landing No. 1	public pier/landing steps		
	KP087 KP089	Kwun Tong Vehicular Ferry Pier	dangerous goods vehicular ferry pier		
	KP088	Kwun Tong Ferry Pier	cross-harbour ferry pier		
Kai Tak Former Runway	KP101	Kai Tak Landing	fireboat berth cum public landing steps		
	KP047	Kai Tak Pier			former Kai Tak Pier
	KP009 KP010	Kai Tak Fire Boat Landing No. 1 & 2			former fire boat landing
South Apron	★	Kowloon Godown (Private Redevelopment)		Landing steps for public use	



(I) Facilities in-use

KP 048



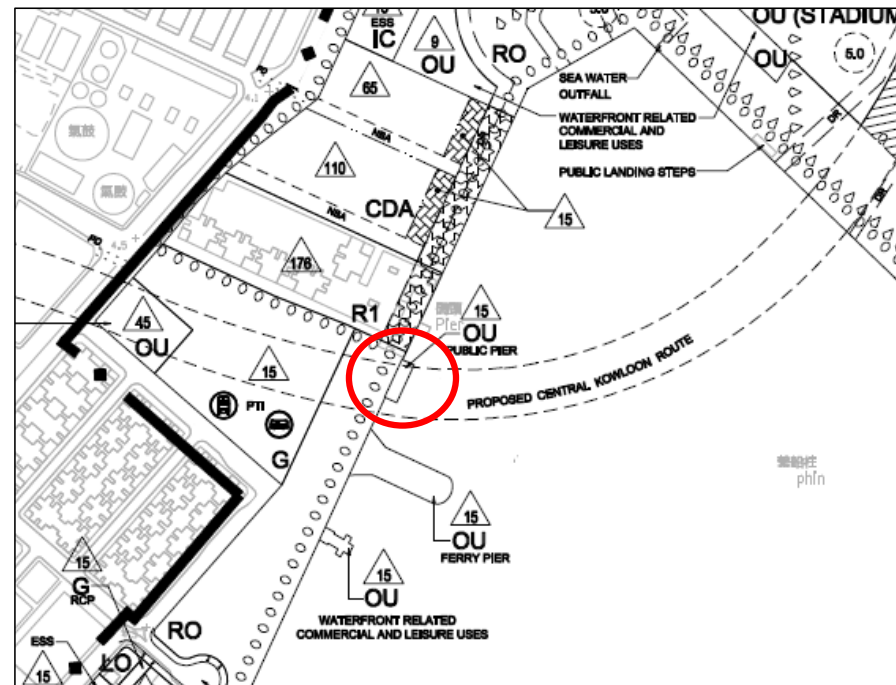
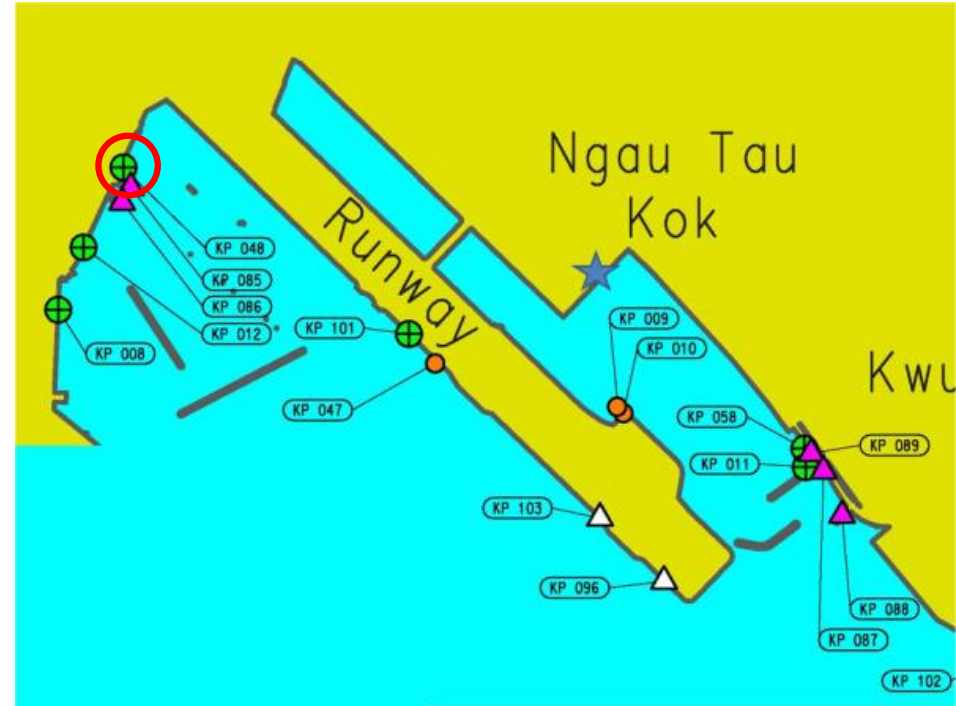
Ma Tau Kok Public Pier

Managed by:

Transport Department

Maintained by:

Civil Engineering and Development Department



Ancillary Facilities	Check Box
Shelter	✓
Seating Bench	✓
Parking Nearby	✓

The Highways Department will demolish the pier for construction of Central Kowloon Route and, after the works, will reconstruct the pier.



(I) Facilities in-use

KP 085

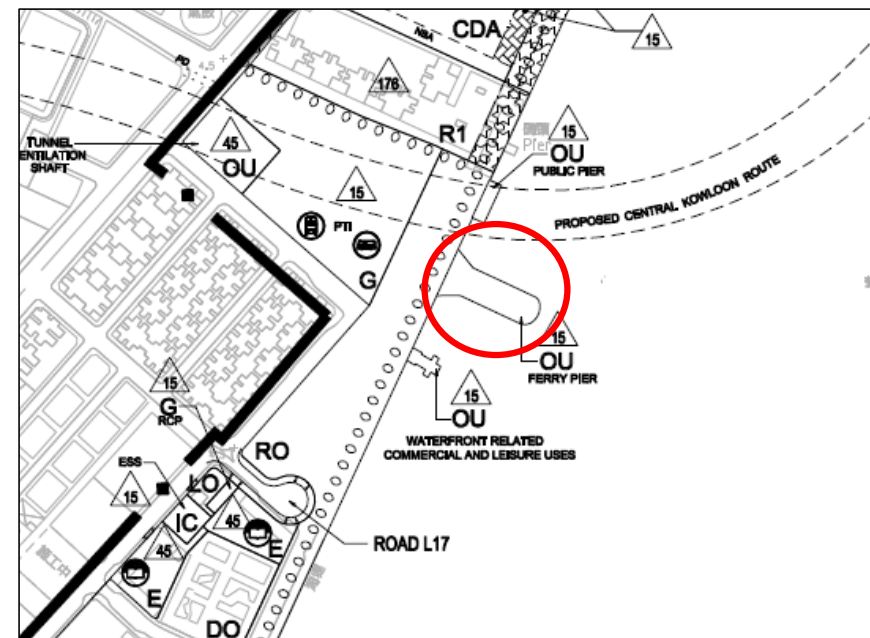
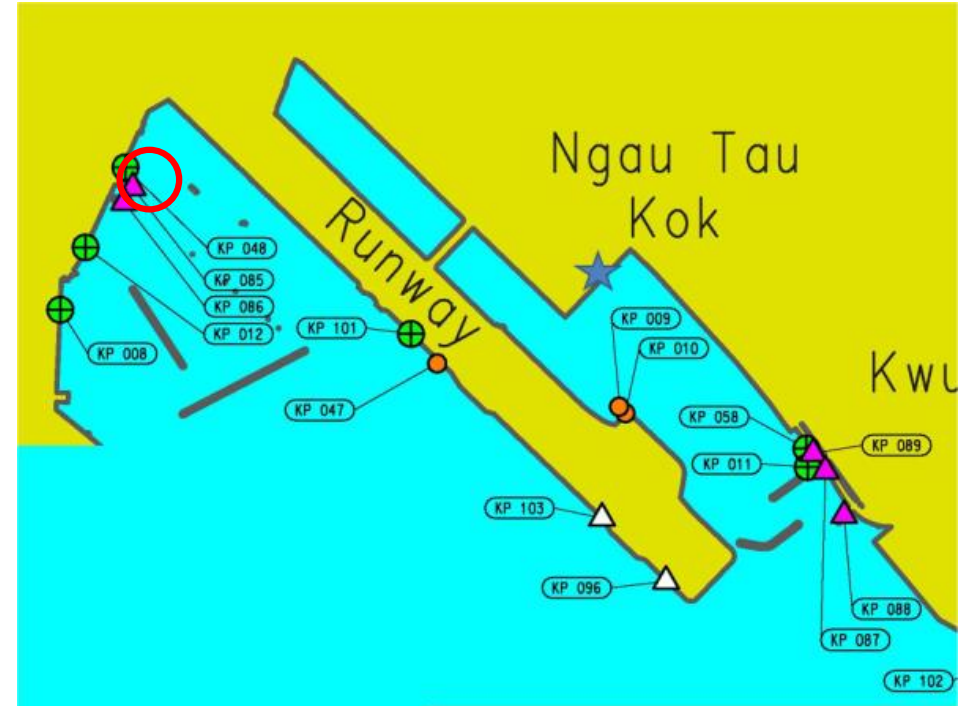


Kowloon City Ferry Pier

Operated by: New World First Ferry (to North Point)

Managed by: Transport Department

Maintained by: Civil Engineering and Development Department (Substructure) & Architectural Services Department (Superstructure)



Ancillary Facilities	Check Box
Shelter	✓
Seating Bench	✓
Parking Nearby	✓

(I) Facilities in-use

KP 012



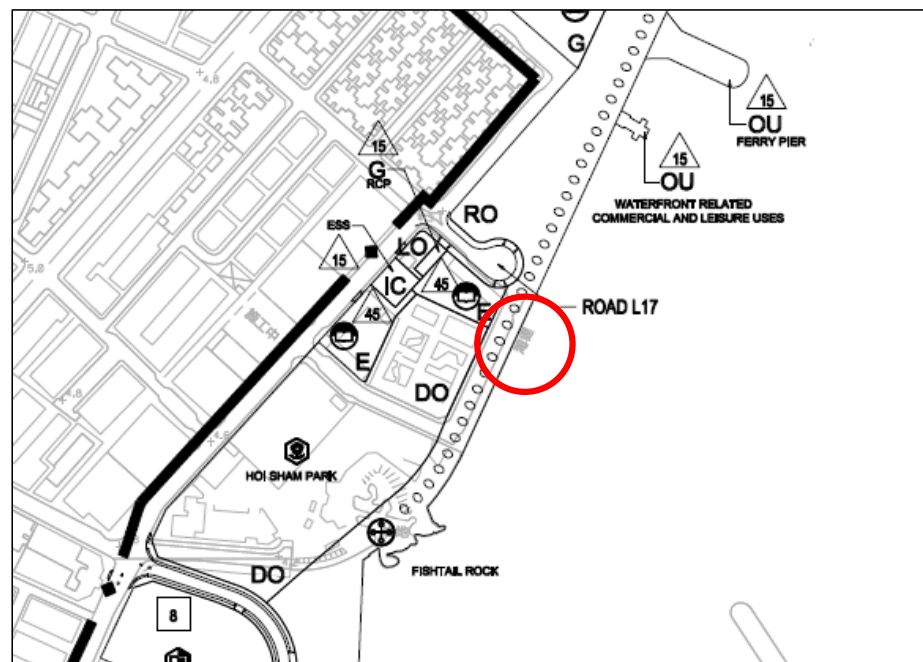
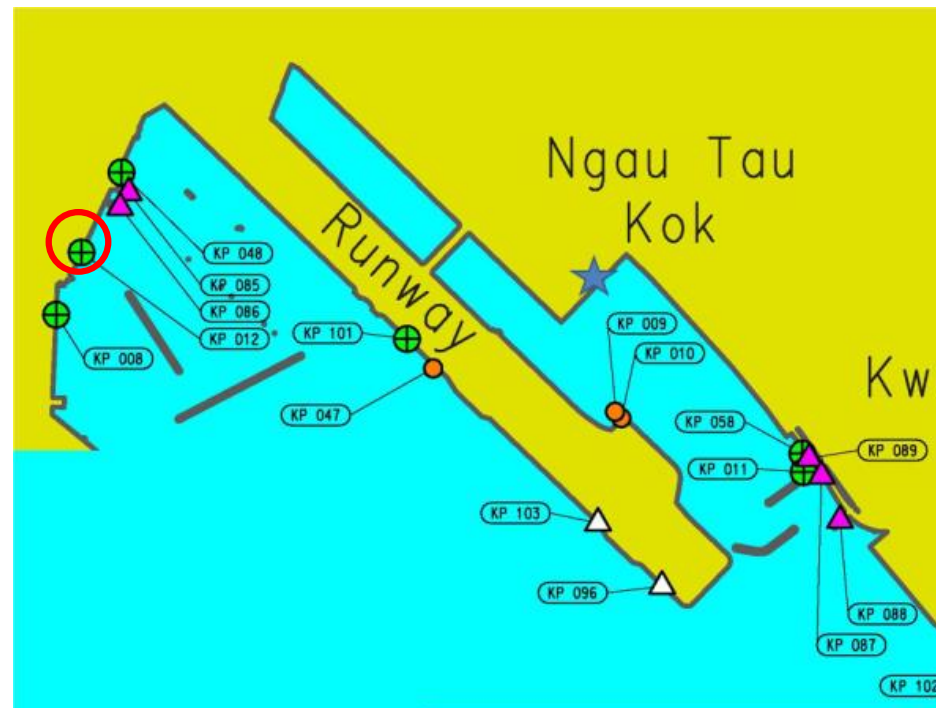
King Wan Street Landing

Managed by:

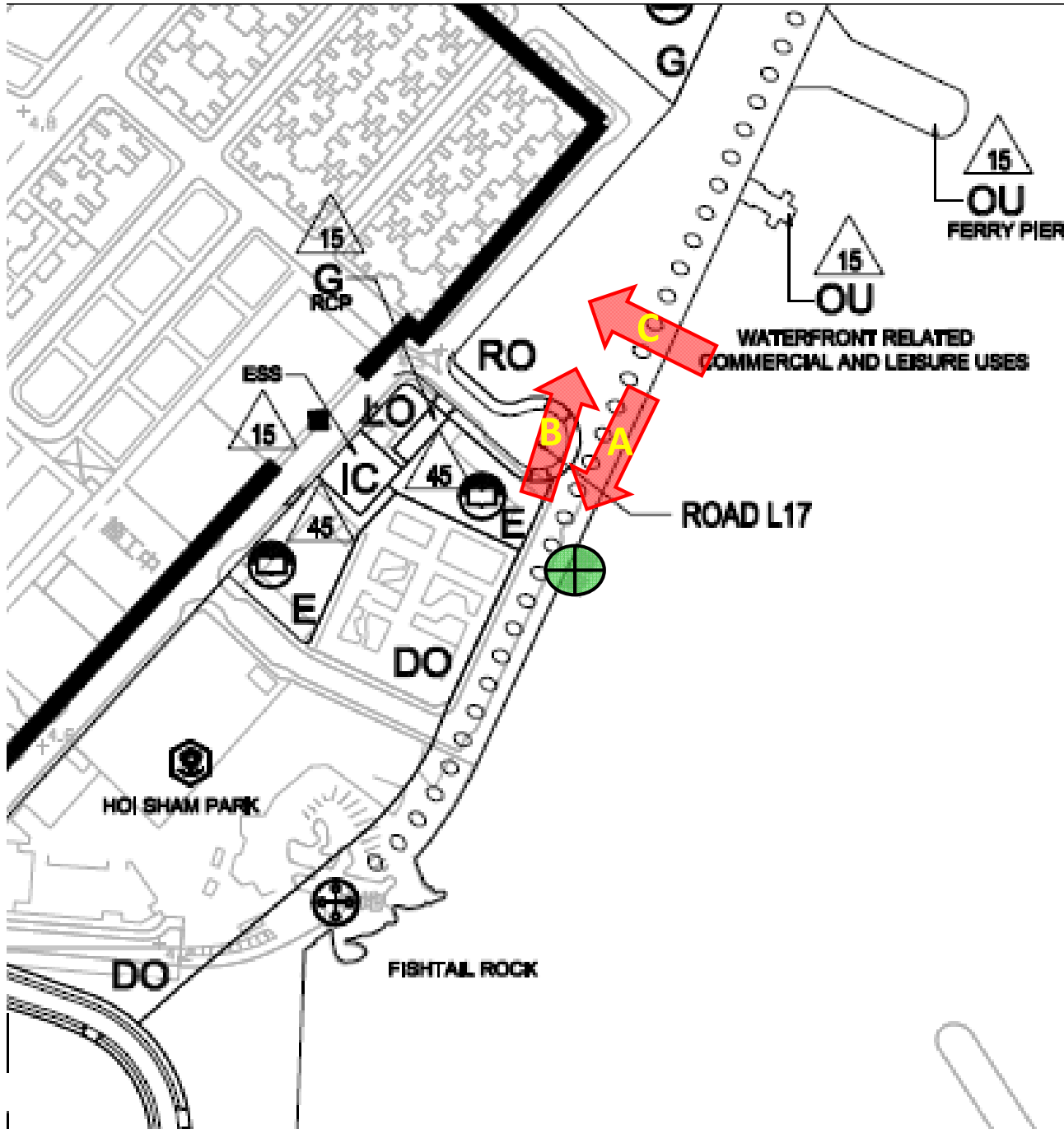
Transport Department

Maintained by:

Civil Engineering and Development Department



Ancillary Facilities	Check Box
Shelter	-
Seating Bench	✓
Parking Nearby	✓

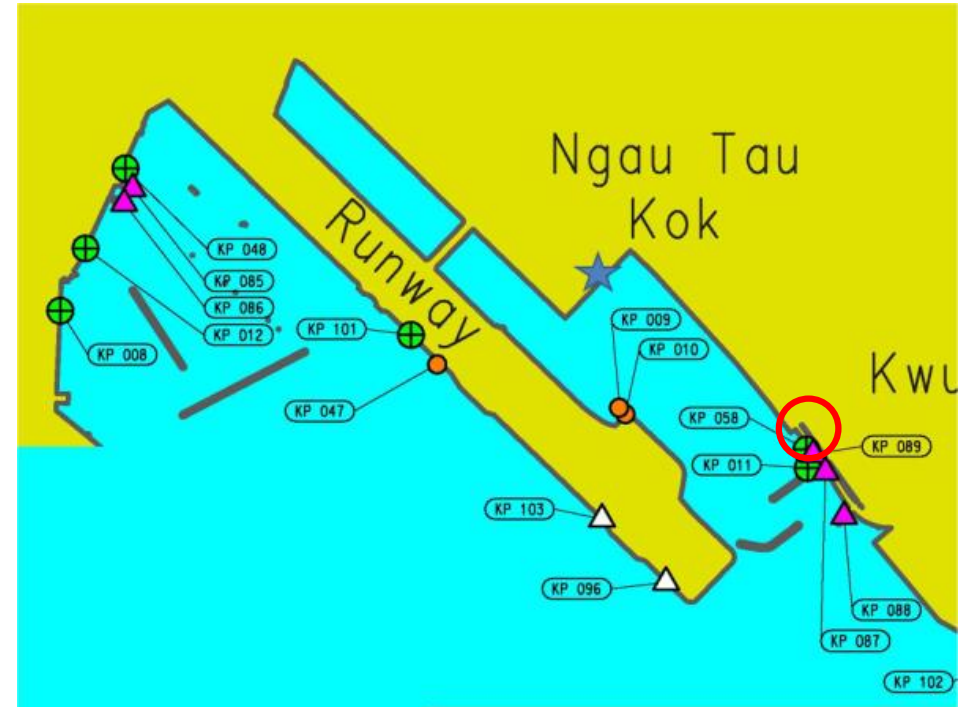


(I) Facilities in-use

KP 058



KP 058



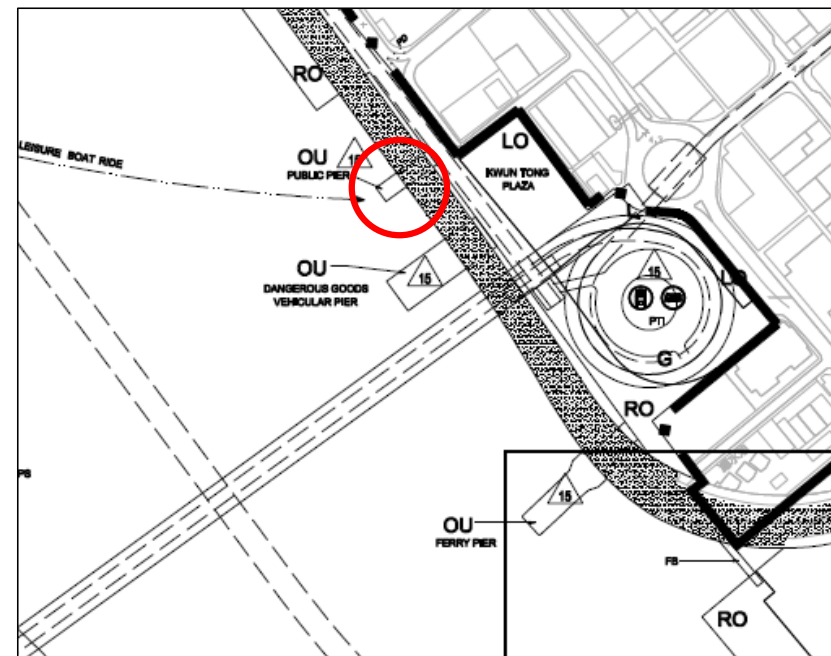
Kwun Tong Public Pier

Managed by:

Transport Department

Maintained by:

Civil Engineering and Development Department



Ancillary Facilities	Check Box
Shelter	✓
Seating Bench	✓
Parking Nearby	✓



Kwun Tong Promenade Phase I

There is scheduled ferry to Sai Wan Ho.



(I) Facilities in-use

KP 011



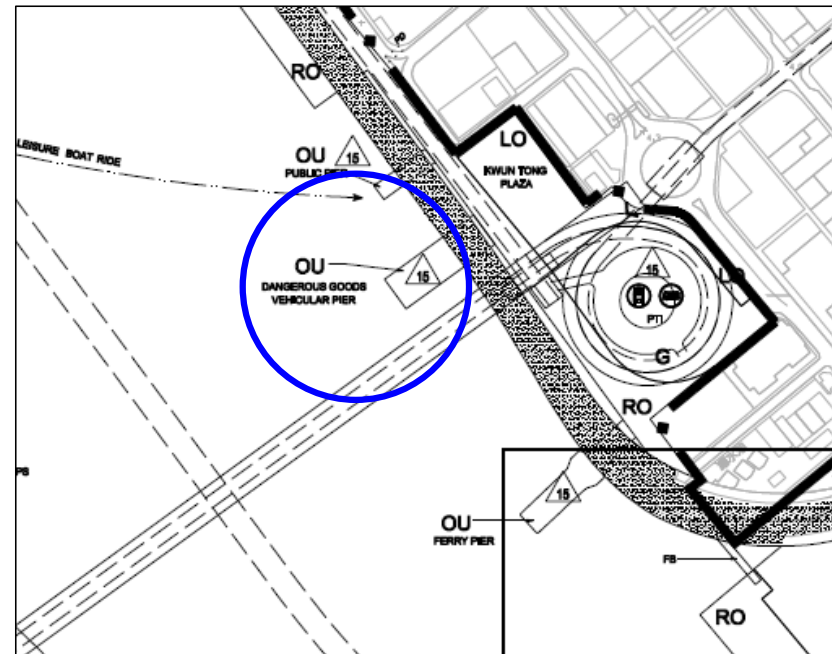
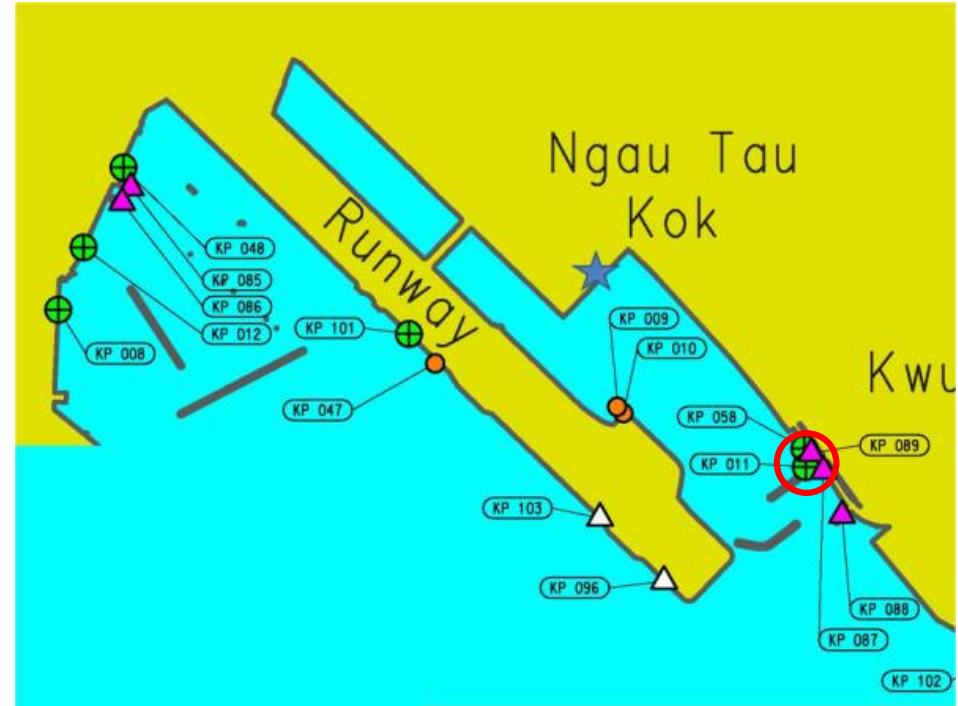
Kowloon Bay Landing No. 1

Managed by:

Transport Department

Maintained by:

Civil Engineering and Development Department



Ancillary Facilities	Check Box
Shelter	-
Seating Bench	-
Parking Nearby	✓

(I) Facilities in-use

KP 087 & KP 089



Kwun Tong Vehicular Ferry Pier (East Pier and West Pier)

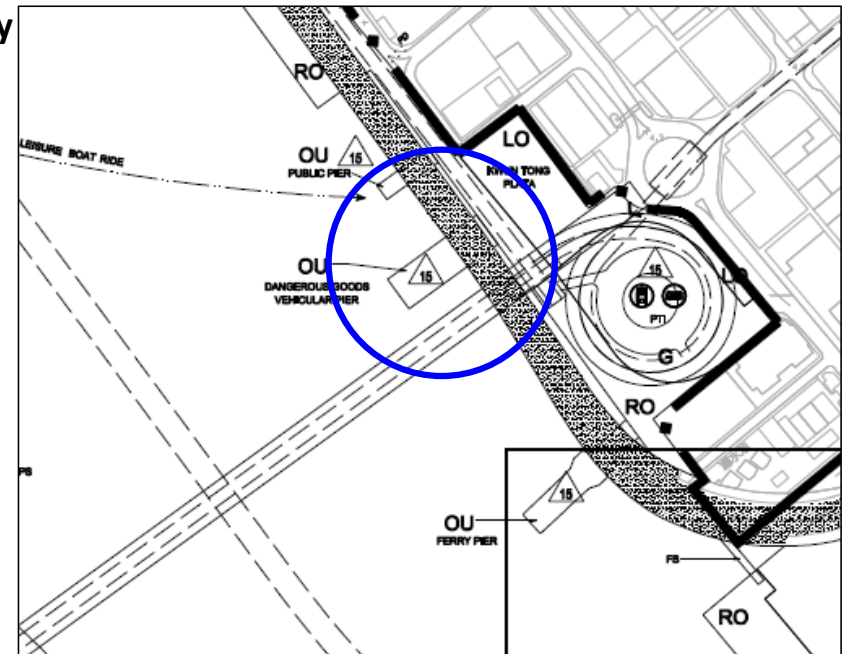
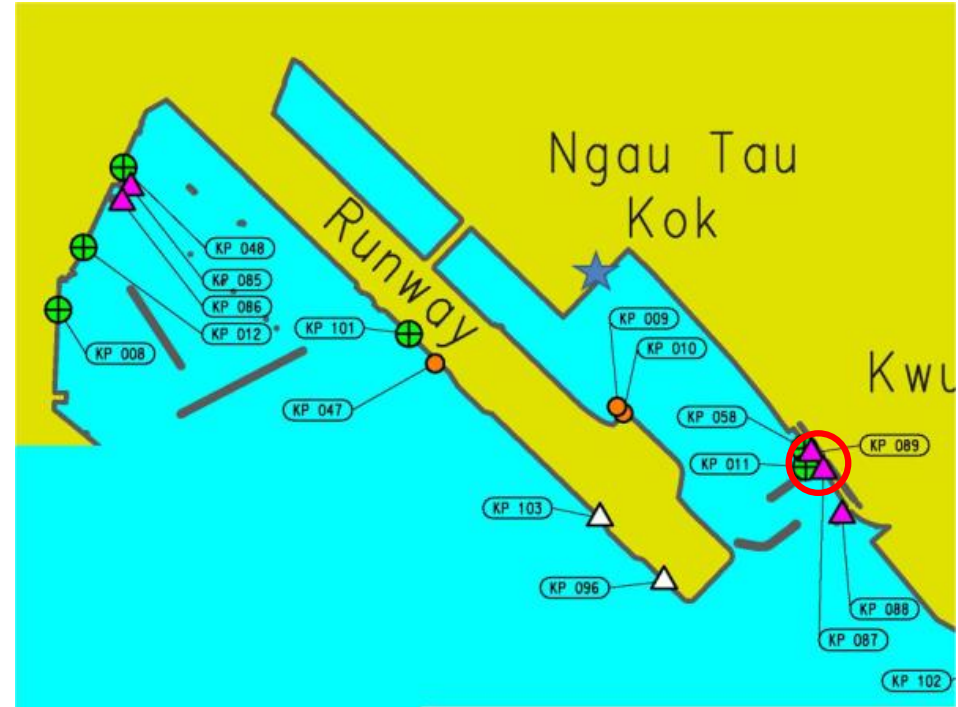
Operated by:

- The Hongkong and Yaumati Ferry (Dangerous Good Vehicular Ferry Pier)
- Kwun Tong Driving School

Managed by: Transport Department

Maintained by:

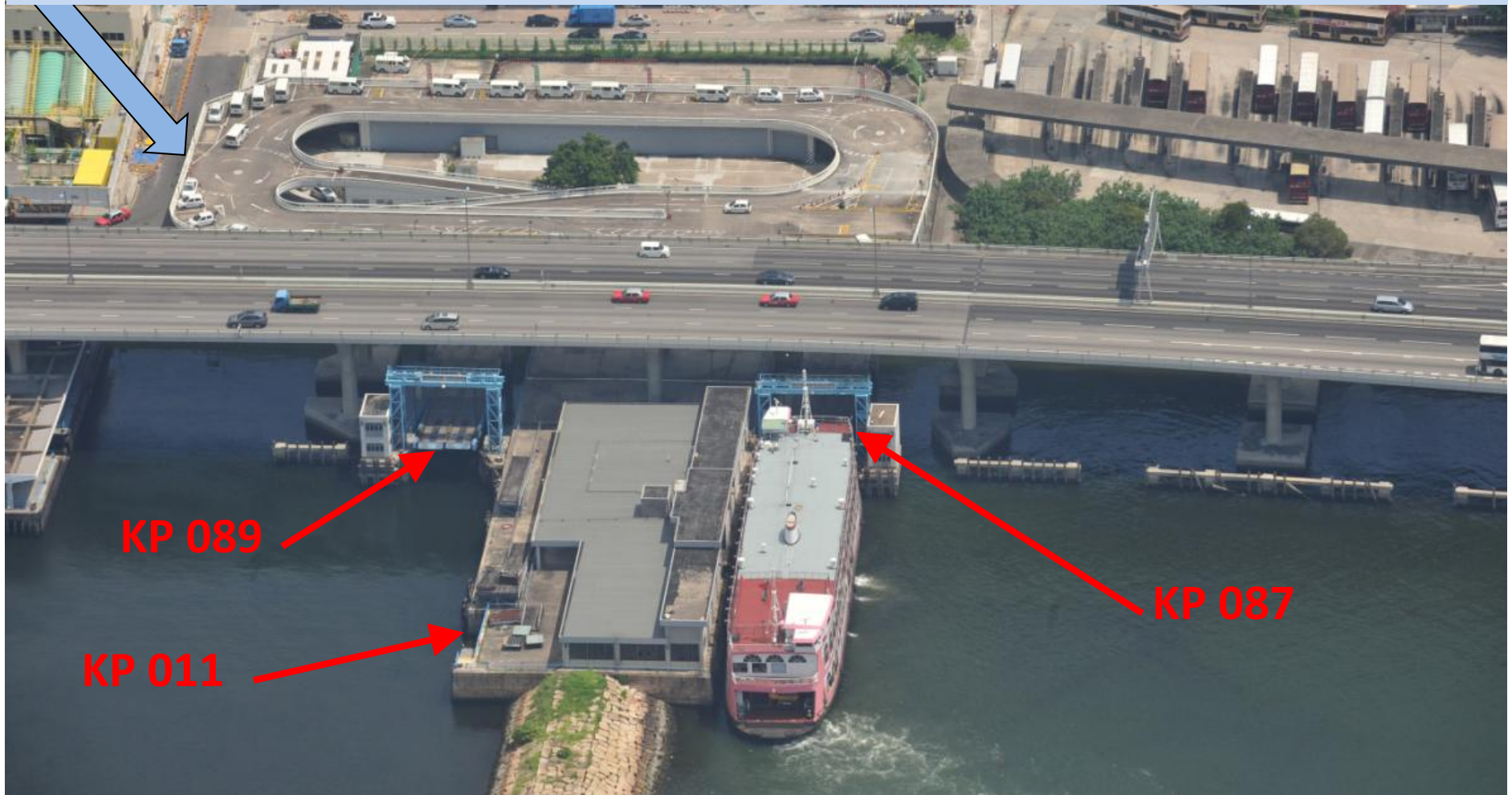
Civil Engineering and Development Department (Substructure) & Architectural Services Department (Superstructure)



Ancillary Facilities	Check Box
Shelter	-
Seating Bench	-
Parking Nearby	✓

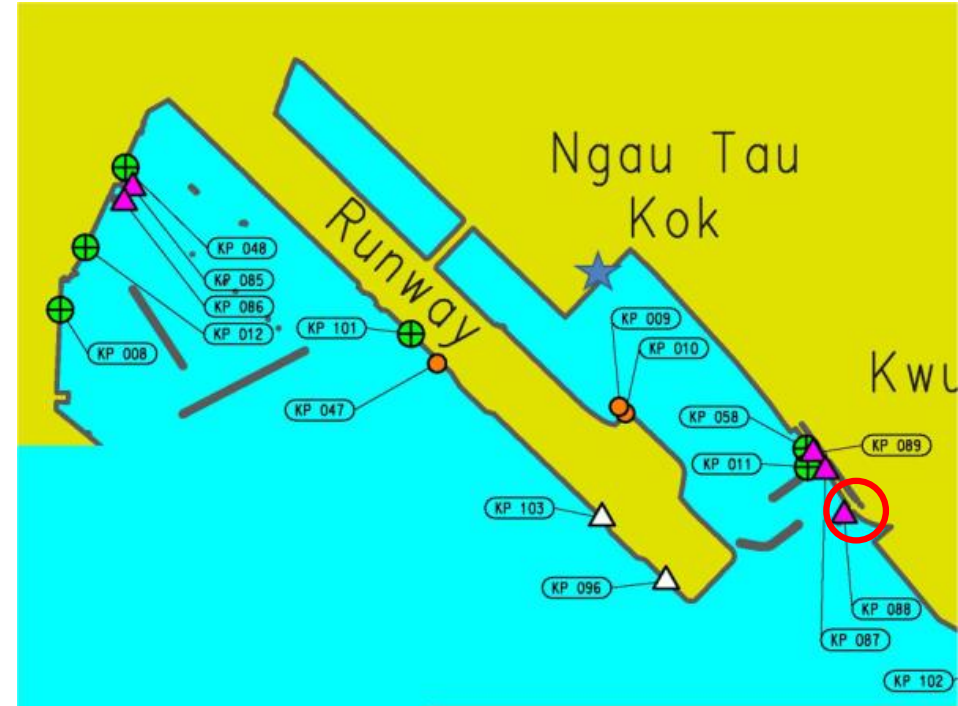
KP 011, KP 089 & KP 087

- KP 011 is located inside the Kwun Tong Dangerous Goods Vehicular Ferry Piers (K89 & K87).
- Kwun Tong Driving School is located next to K89 & K87 and occupies the upper deck of K89 & K87 as shown in the photo.



(I) Facilities in-use

KP 088



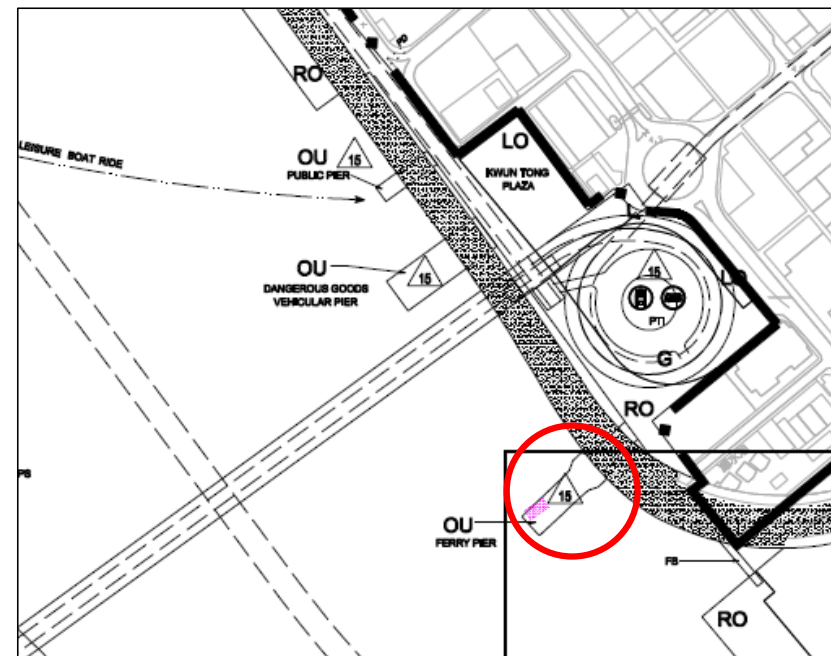
Kwun Tong Ferry Pier

Operated by: Fortune Ferry Company (to North Point)

Managed by: Transport Department

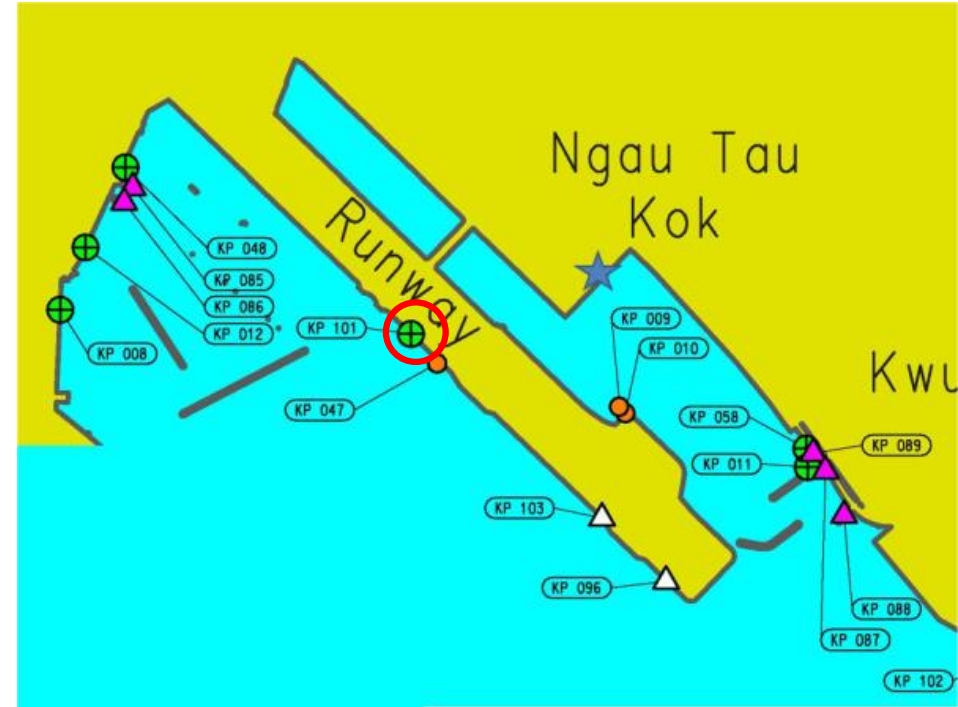
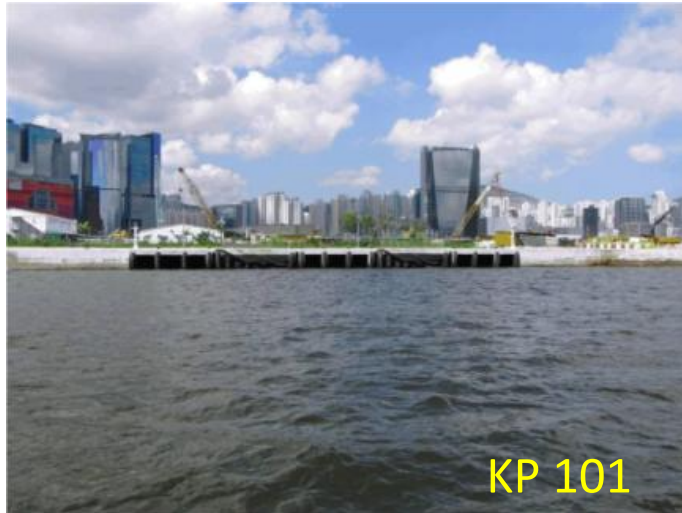
Maintained by: Civil Engineering and Development Department (Substructure) & Architectural Services Department (Superstructure)

Ancillary Facilities	Check Box
Shelter	✓
Seating Bench	✓
Parking Nearby	-



(I) Facilities in-use

KP 101



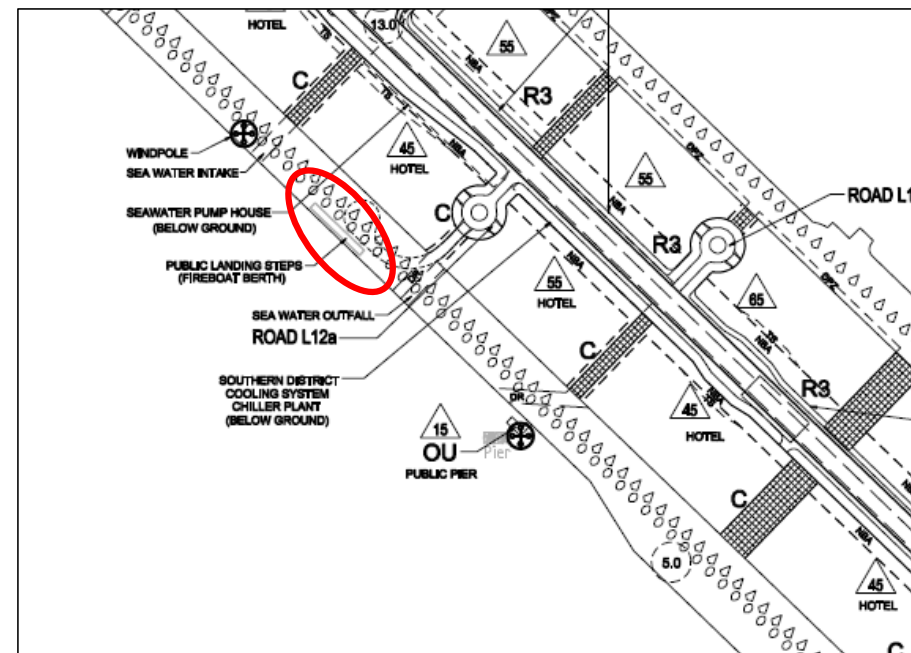
Kai Tak Landing Steps

Managed by: Transport Department

Maintained by:

Civil Engineering and Development Department

[currently occupied by EMSD (until 2014)]



Ancillary Facilities	Check Box
Shelter	-
Seating Bench	-
Parking Nearby	-

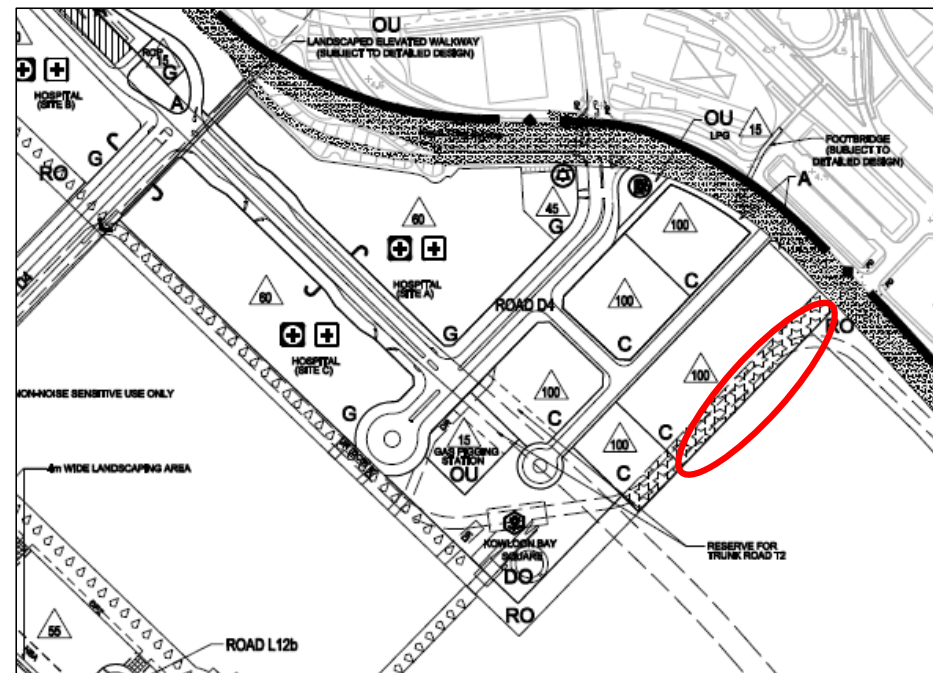
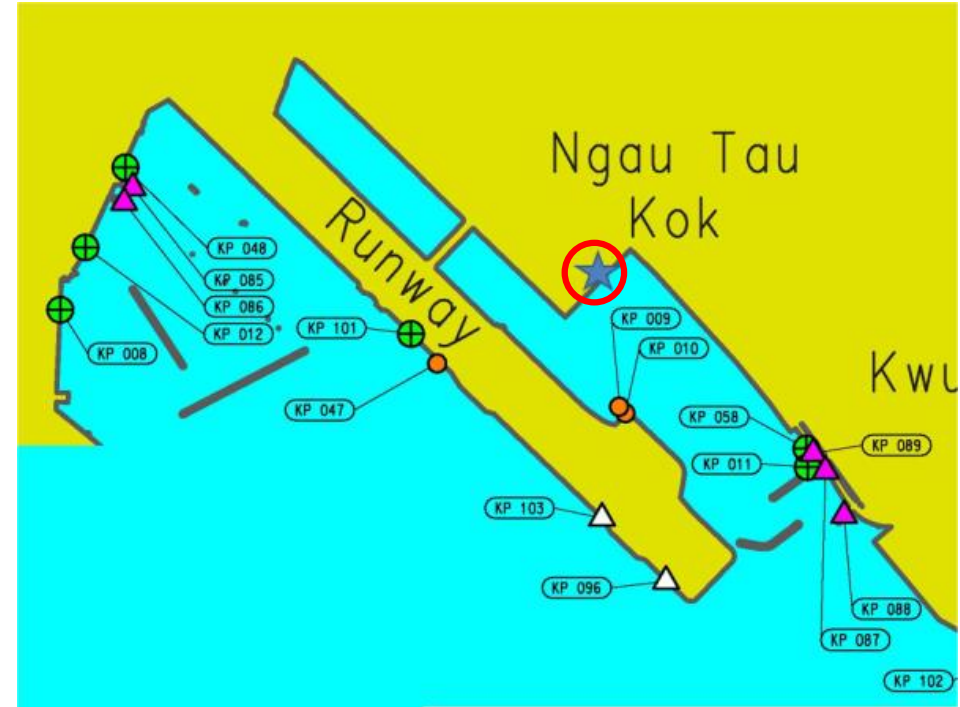


(II) Facilities under planning (At Kowloon Godown Private Redevelopment)



Kowloon Godown

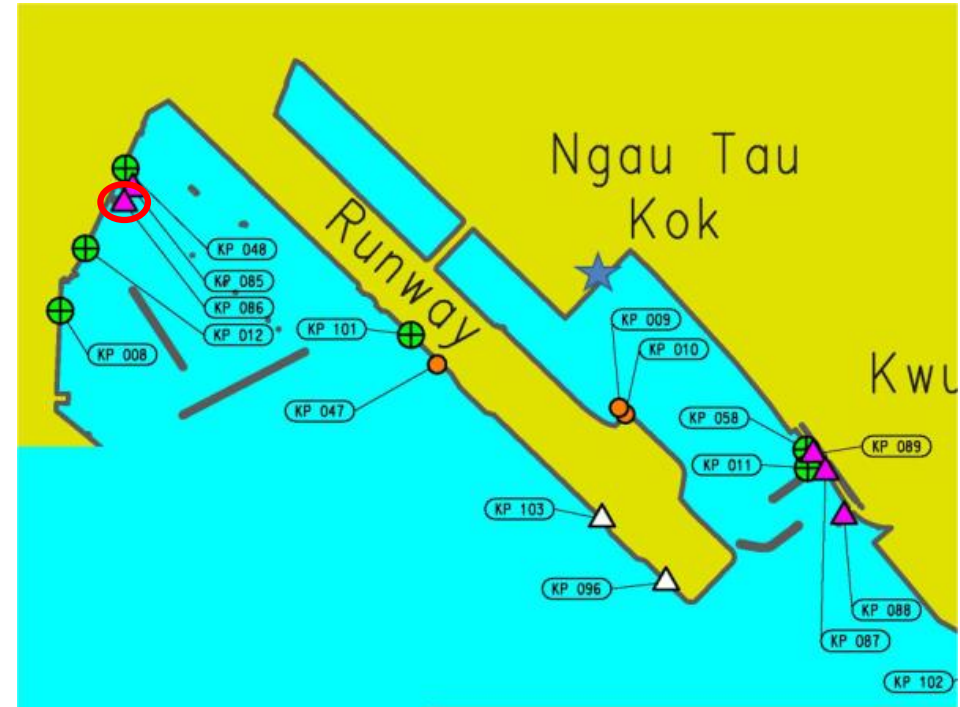
- Application for re-zoning in process (private redevelopment)
- Landing steps at seafront promenade for public use



Ancillary Facilities	Check Box
Shelter	-
Seating Bench	-
Parking Nearby	✓

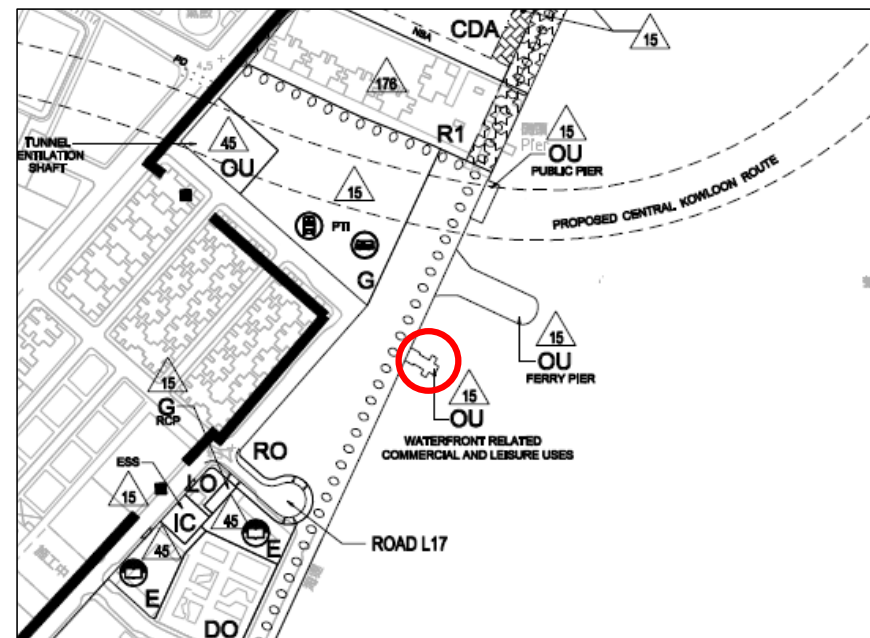
(III) Disused Facilities

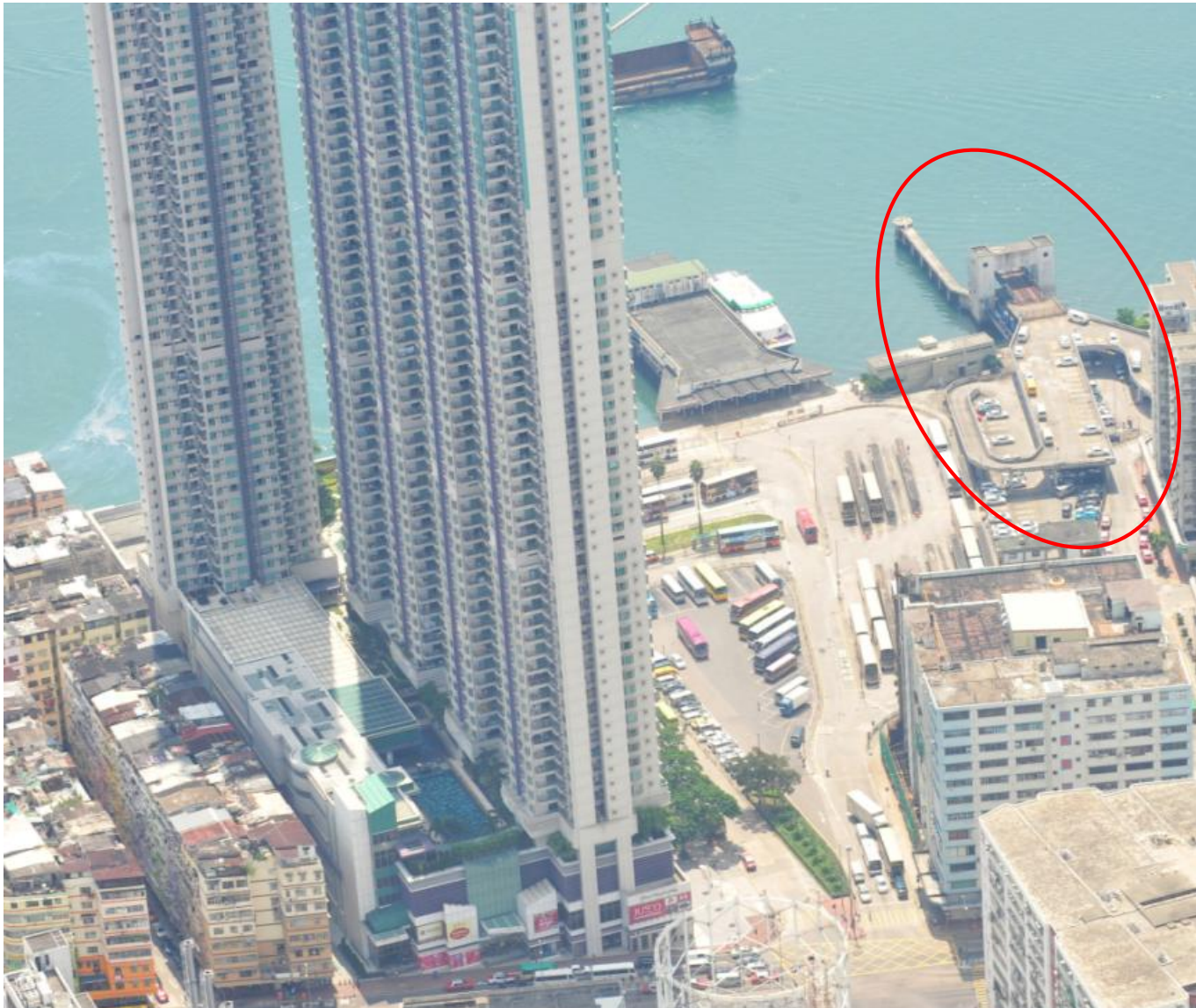
KP 086



Kowloon City Vehicular Ferry Pier [abandoned]

Ancillary Facilities	Check Box
Shelter	-
Seating Bench	-
Parking Nearby	✓





The ferry pier is not in-use while the landside facilities are leased out for paid parking.

(III) Disused Facilities

KP 008



To Kwa Wan Landing

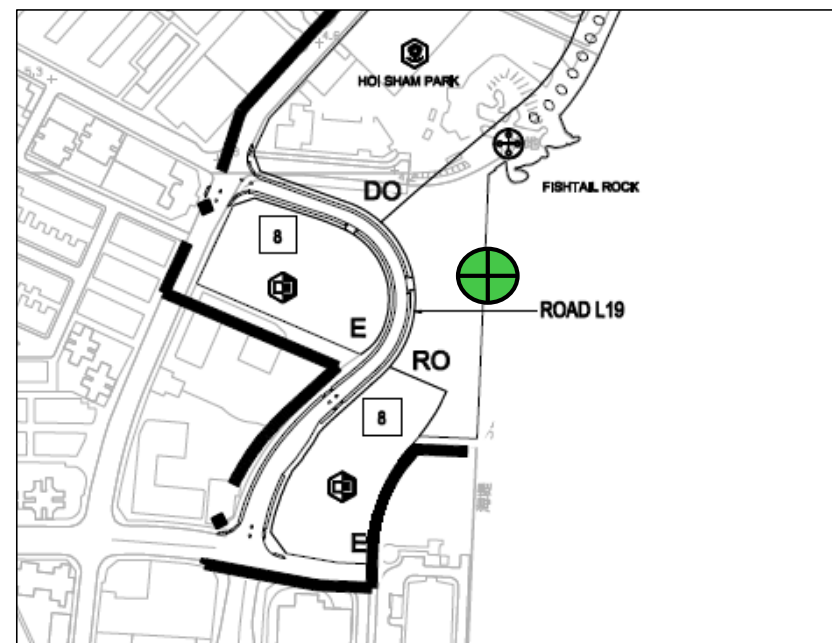
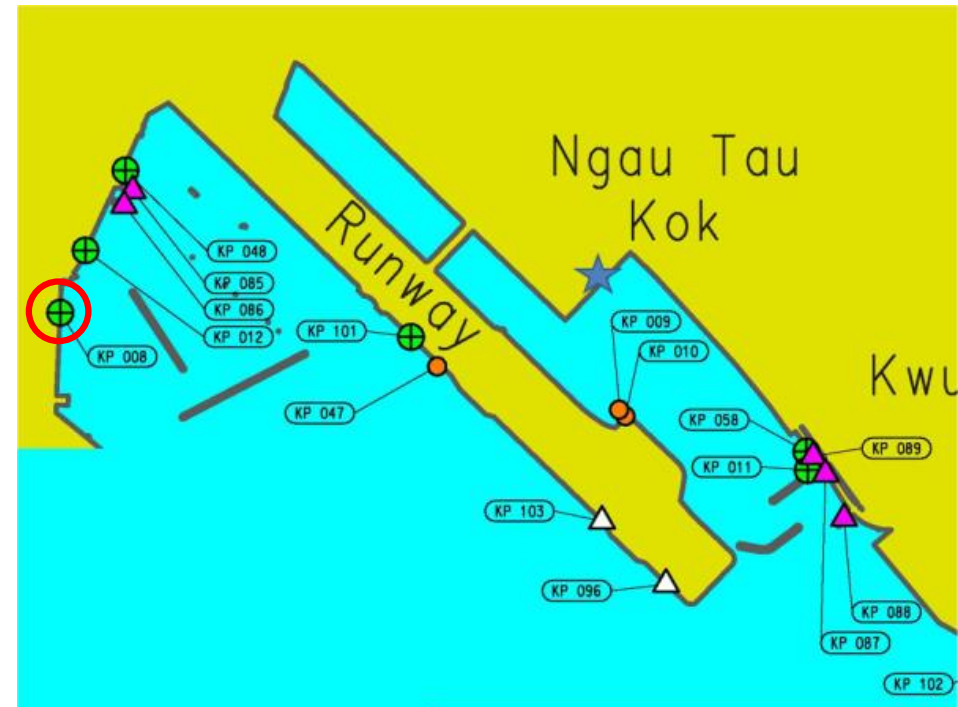
Managed by:

Transport Department

Maintained by:

Civil Engineering and Development Department

[located inside a paid parking lot]



Ancillary Facilities	Check Box
Shelter	-
Seating Bench	-
Parking Nearby	✓



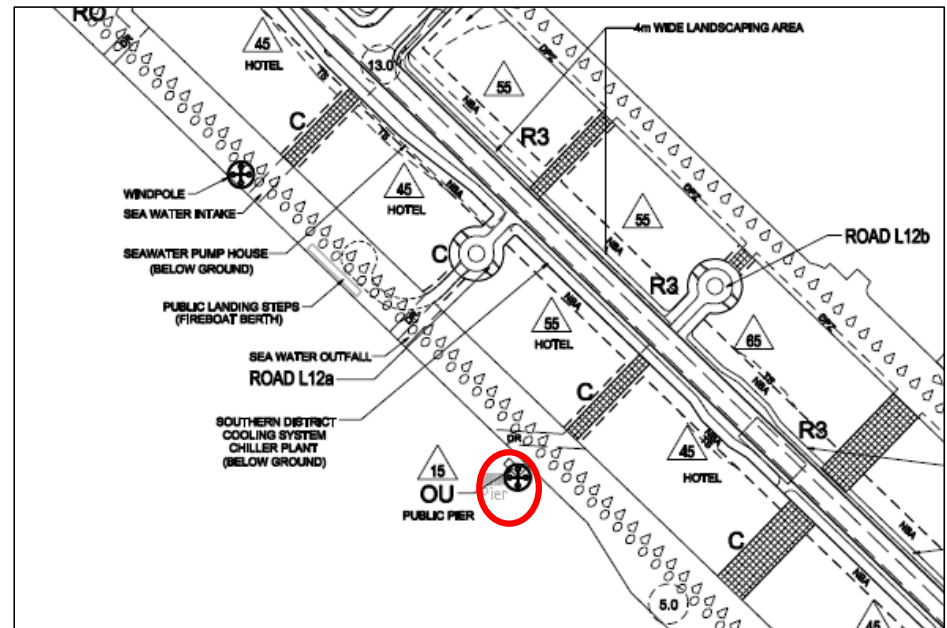
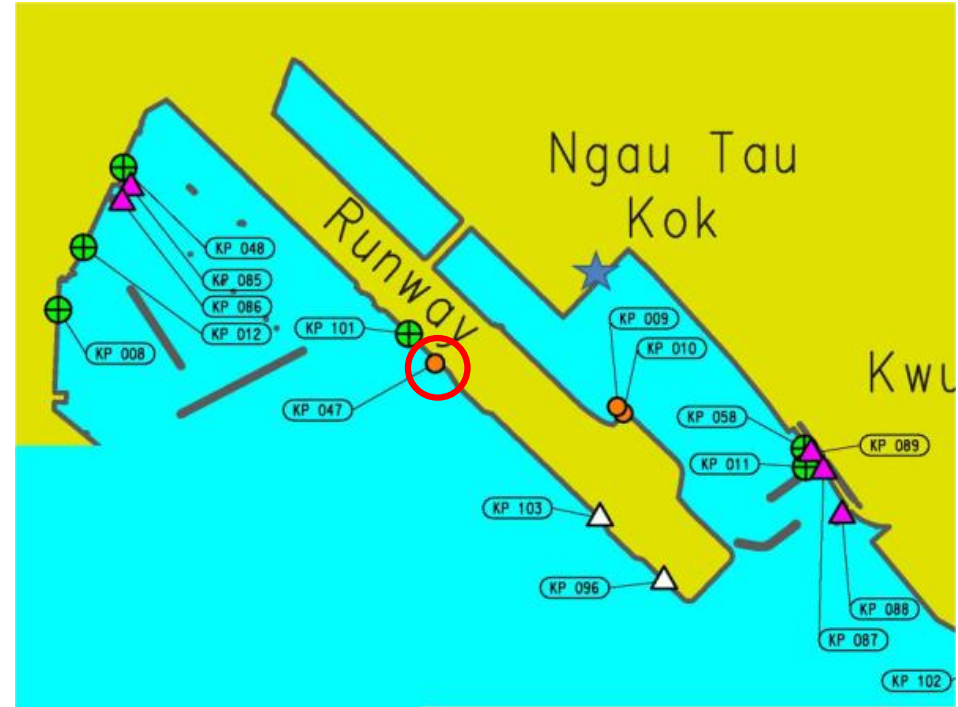
(III) Disused Facilities

KP 047



KP 047

Kai Tak Pier [abandoned]



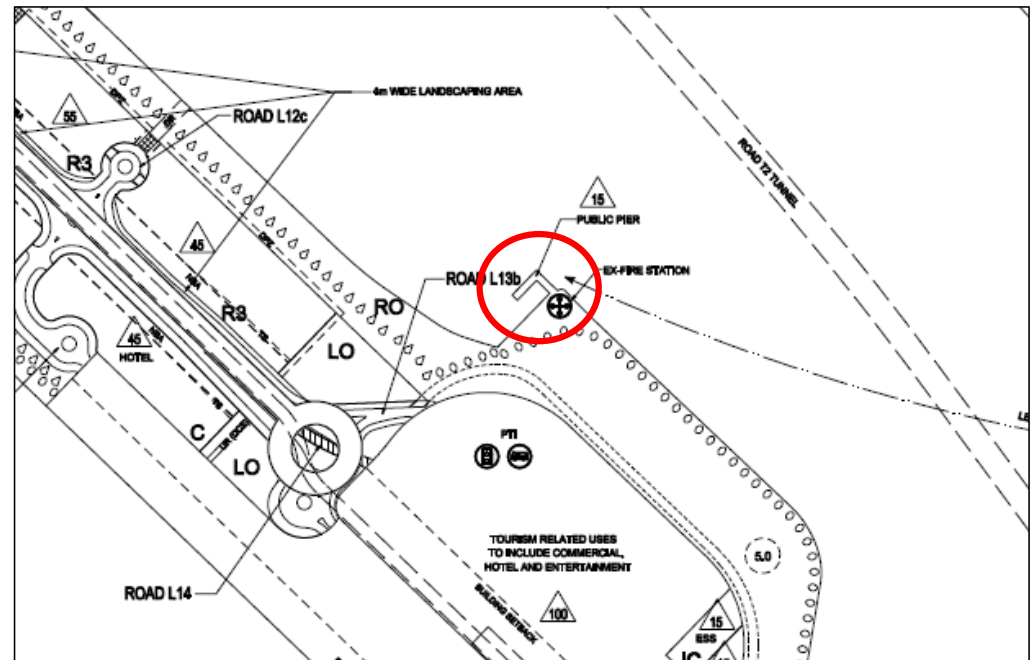
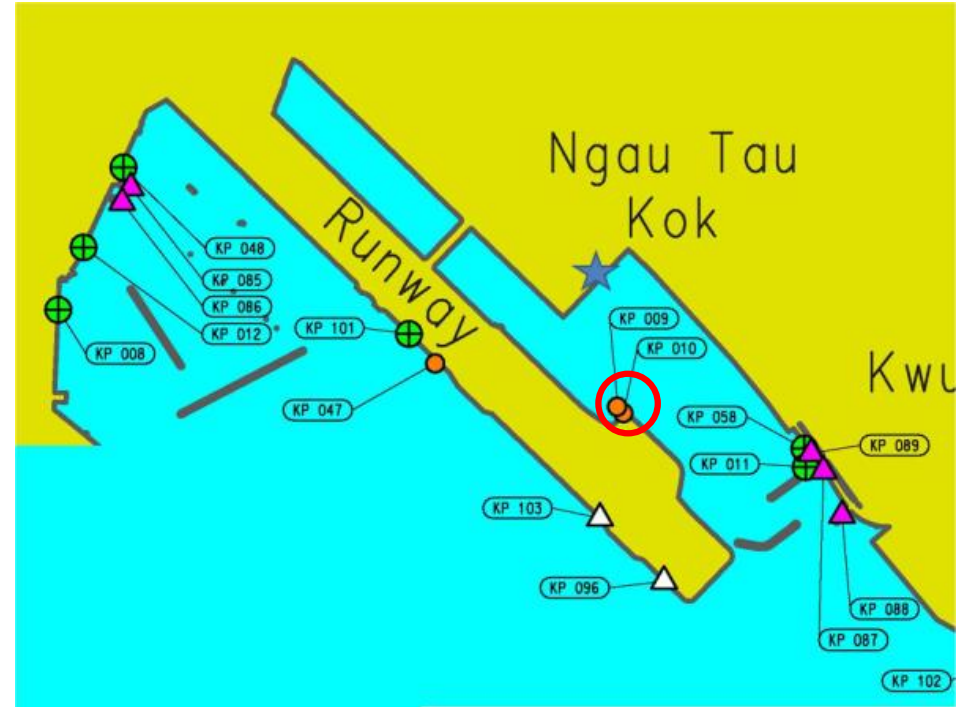
Ancillary Facilities	Check Box
Shelter	-
Seating Bench	-
Parking Nearby	-

(III) Disused Facilities

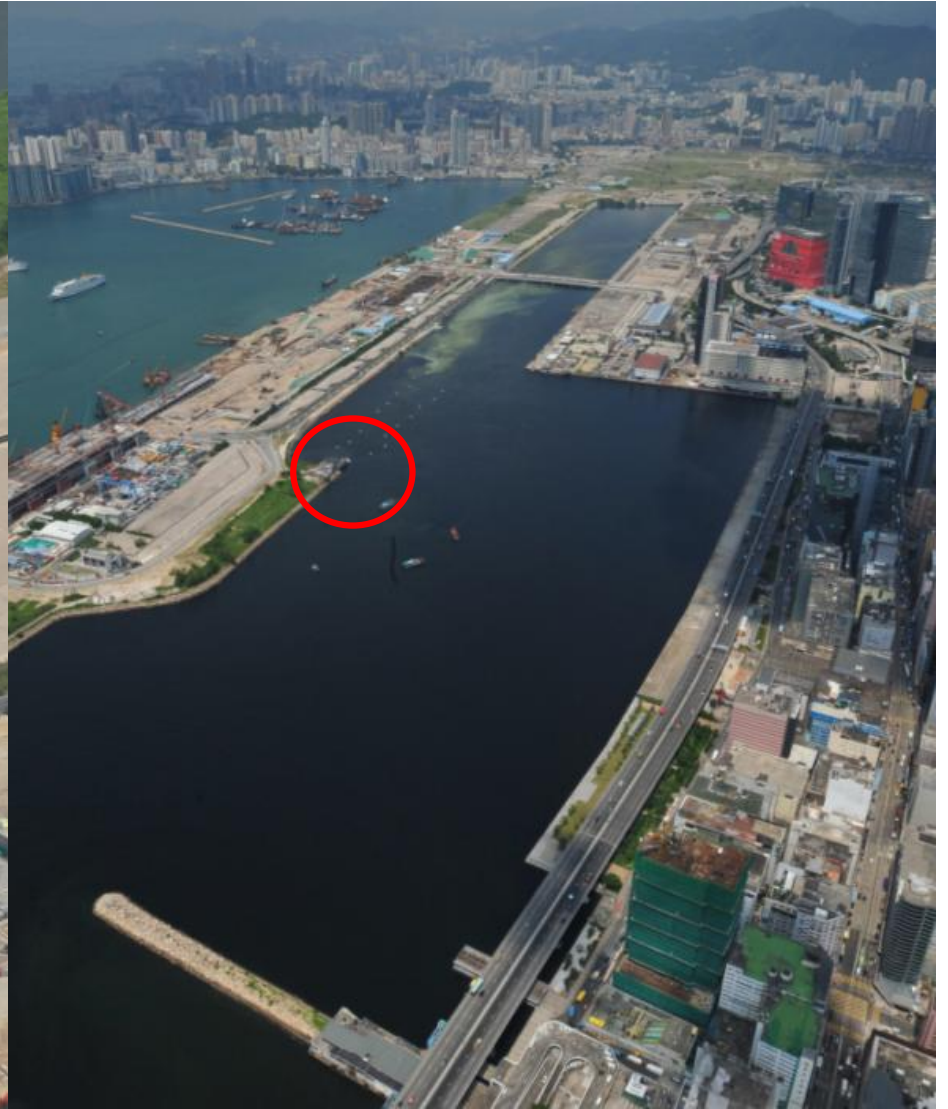
KP 009 & KP 010



Kai Tak Fire Boat Landing No. 1 & 2 [abandoned]



Ancillary Facilities	Check Box
Shelter	-
Seating Bench	-
Parking Nearby	-





The End