

Task Force on Water-land Interface

For discussion
on 19 March 2013

TFWL/02/2013

An Overview of Public Landing Facilities in Central and Wan Chai Districts

PURPOSE

This paper provides an overview of public landing facilities in Central and Wan Chai districts.

BACKGROUND

2. Civil Engineering and Development Department (CEDD) presented an overview of public landing facilities within Kai Tak Development in the fourth meeting of the Task Force on Water-Land Interface on 12 November 2012. Similarly, an overview of public landing facilities in Central and Wan Chai districts is presented herewith to the Task Force for information and discussion.

CURRENT SITUATION

3. At present, there are 2 public piers, 9 ferry piers and 6 public landing steps within Central and Wan Chai districts. A set of PowerPoint slides showing their approximate locations and the current situation is attached in **Annex**.

ADVICE SOUGHT

4. Members are advised to note the current situation of public landing facilities in Central and Wan Chai districts.

**Civil Engineering and Development Department
March 2013**

Public Landing Facilities in Central and Wan Chai Districts

Area	Marine Structure No.	Name of Facility	(i) Facilities in-use	(ii) Facilities under Construction
Sheung Wan	HP 142	Sheung Wan Landing No. 2	Landing steps for public use	--
	HP 076	Sheung Wan Landing No. 1	Landing steps for public use	--
	--	The Hong Kong-Macau Ferry Terminal and its landing steps (HP 109 and HP 110)	Cross-boundary ferry pier	--
Central	HP 091	Central Government Pier and its landing steps	Government pier	--
	--	The landings at the Custom and Excise Department's compound adjacent to the Central Government Pier (HP 039, HP 040, HP 041 and HP 042)	Government landing	--
	HP 048	Central Landing No. 10	Landing steps for public use	--
	HP 049	Central Landing No. 5	Government landing	--
	HP 146	Central Pier No. 2	Ferry pier	--
	HP 134	Central Pier No. 3	Ferry pier	--
	HP 135	Central Pier No. 4	Ferry pier	--
	HP 123	Central Pier No. 5	Ferry pier	--
	HP 124	Central Pier No. 6	Ferry pier	--
	HP 125	Central Pier No. 7	Ferry pier	--
	HP 149	Central Pier No. 8	Hong Kong Maritimes Museum	--
	HP 150	Central Pier No. 9	Public pier	--
	HP 151	Central Pier No. 10	Public pier	--
Wan Chai	HP 080	Hong Kong Convention & Exhibition Central Landing	Landing steps for public use	--
	HP 153	Wan Chai Pontoon Pier	Ferry pier	--

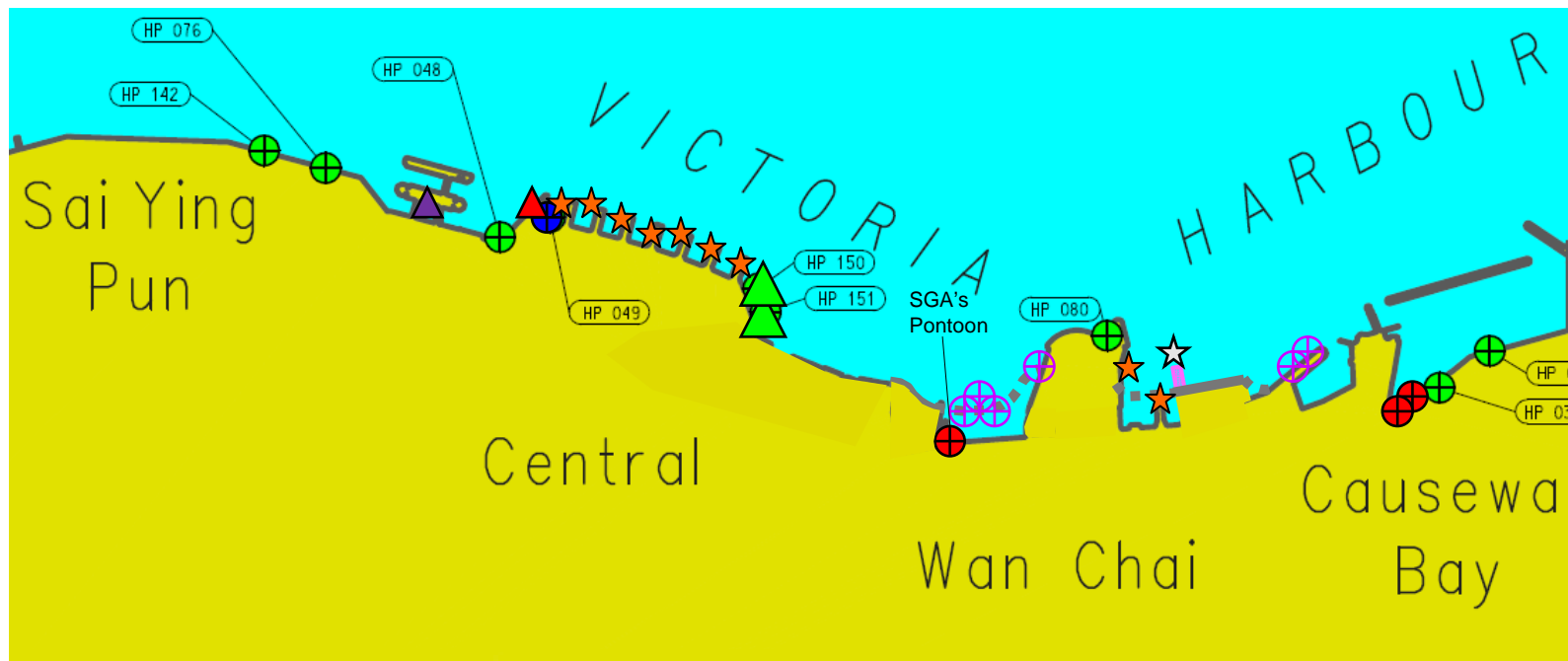
Area	Marine Structure No.	Name of Facility	(i) Facilities in-use	(ii) Facilities under Construction
Wan Chai	HP 130	Wan Chai (East) Ferry Pier	Ferry pier	--
	--	4 Nos. of landings	--	New seafront to the west of HKCEC
	--	Proposed Wan Chai Ferry Pier	--	New seafront to the east of HKCEC
	--	2 Nos. of landings	--	North of the breakwater of ex-Wan Chai Public Cargo Working Area
Causeway Bay	HP 037	CBTS Landing No. 8	Landing steps for public use	--
	HP 034	CBTS Landing No. 7	Landing steps for public use	--

Remarks:

1. The Hong Kong-Macau Ferry Terminal and their associated landing steps (HP 109 and HP 110) are managed by Marine Department.
2. The Central Government Pier and its landing steps and Central Landing No. 5 (HP 049) are managed by Government Property Agency (GPA).
3. Central Piers Nos. 2, 3, 4, 5, 6, 7 & 8 are managed by ferry operators under GPA's tenancy agreements, except the Eastern berth of Central Pier No. 8, which is leased to the Hong Kong Maritime Museum Ltd. by Home Affairs Bureau.
4. Government landings (HP 039, HP 040, HP 041 and HP 042) are managed by Custom and Excise Department.
5. Public landings (HP 034, HP 037, HP 048, HP 076, HP 080 and HP 142) and public piers (HP 150 and HP 151) are managed by Transport Department.
6. All the public/government landings in the above table are maintained by Civil Engineering and Development Department (CEDD).
7. The superstructures and the marine structures, including the catwalks, of all the public piers in the above table are maintained by Architectural Services Department and CEDD respectively.

An Overview of Public Landing Facilities in Central and Wan Chai Districts

Public Landing Facilities in Central and Wan Chai Districts

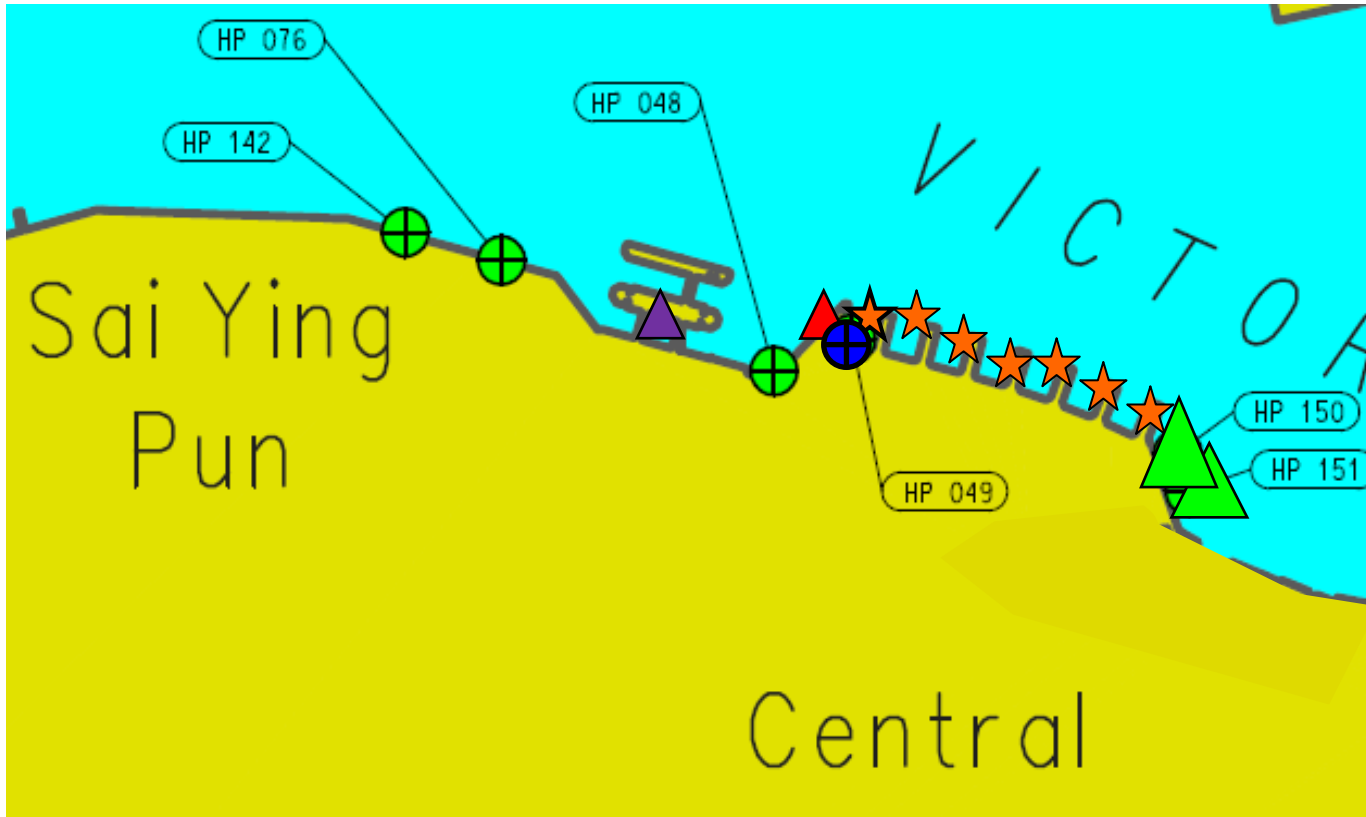


Legend:

- + Public Landing Steps
 + Private Landing Steps
 + Government Landing Steps
- ▲ Government Pier (not for public use)
 ▲ The Hong Kong-Macau Ferry Terminal
 ▲ Public Piers
- ★ Ferry Piers
 ★ New Wan Chai Ferry Pier (under construction)
- + Public Landing Steps (under construction)
 ◆ Future Permanent Waterfront

Public Landing Facilities in Central

Public Landing Facilities in Central



Legend:

- | | | |
|--|--|--|
|  Public Landing Steps |  Government Landing Steps | |
|  Government Pier (not for public use) |  The Hong Kong-Macau Ferry Terminal |  Public Piers |
|  Ferry Piers | | |

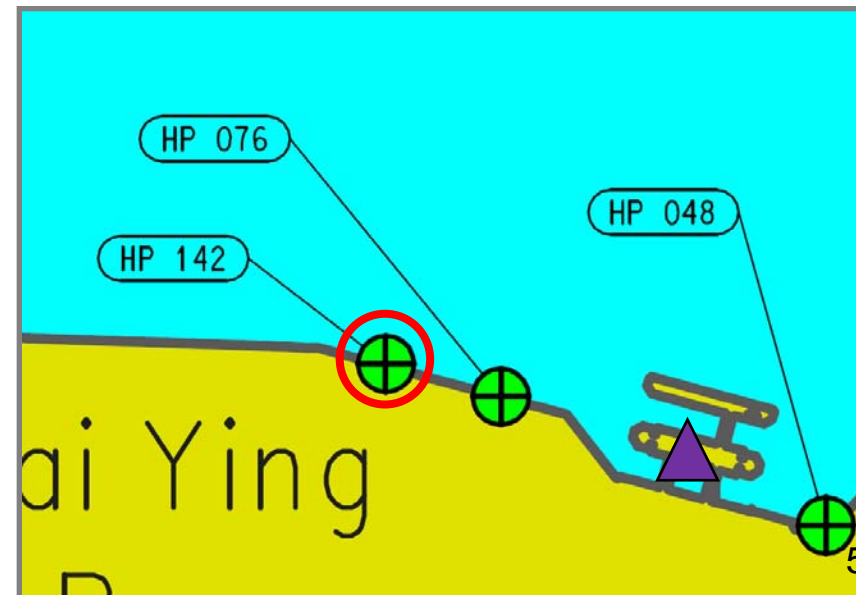
Sheung Wan Landing No. 2 (HP 142)



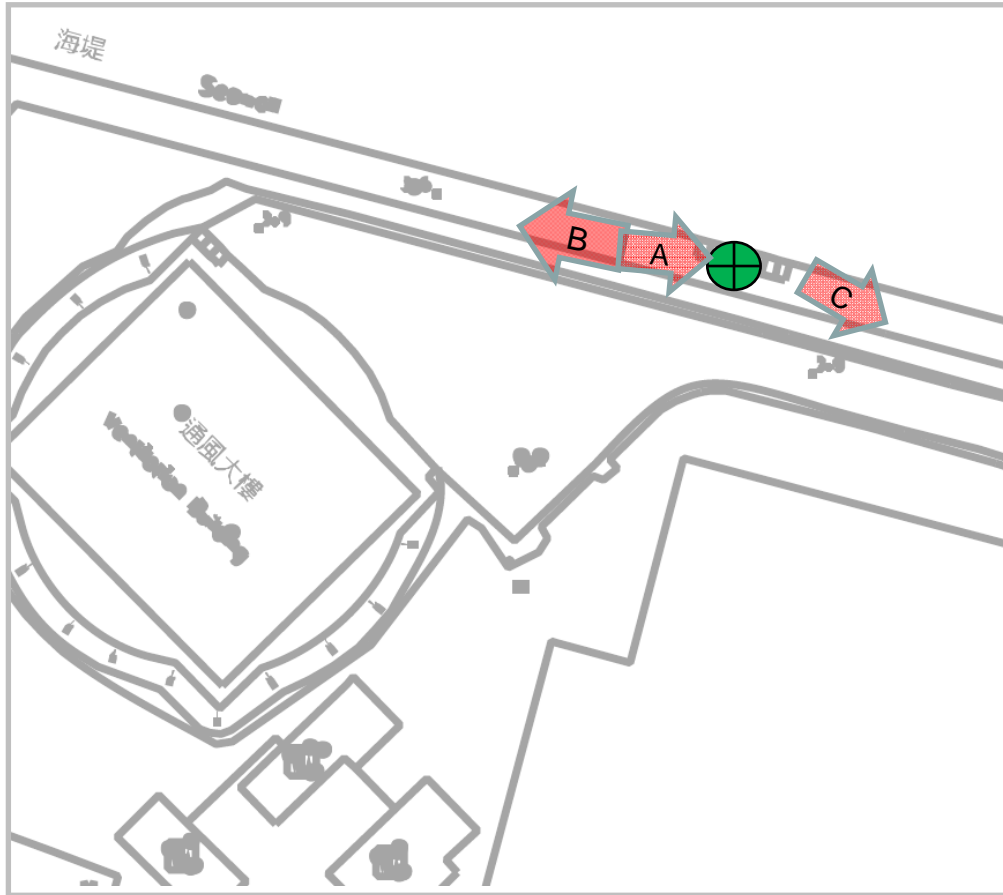
Location: At the seafront in Sheung Wan



Ancillary Facilities	Check Box
Shelter	✓
Seating Bench	✓
Parking Nearby	-



Sheung Wan Landing No. 2 (HP 142)



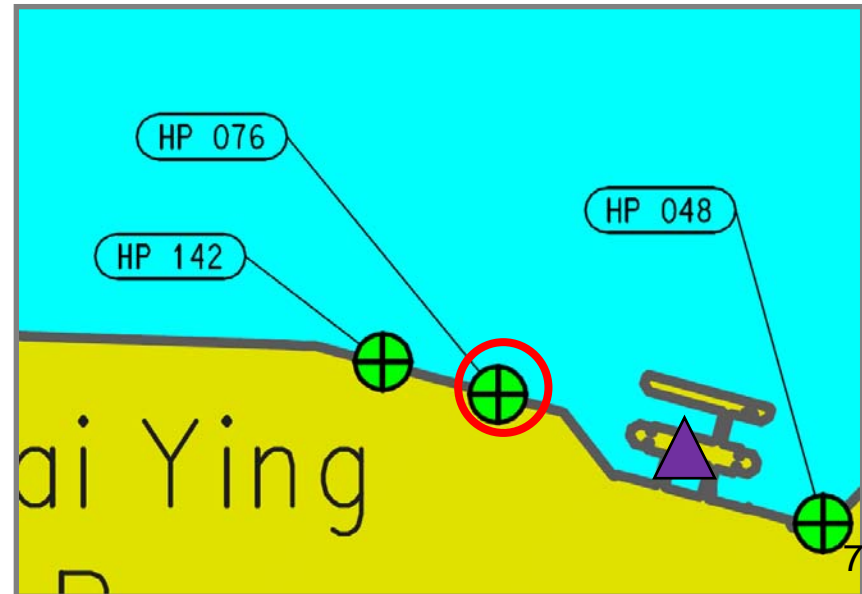
Sheung Wan Landing No. 1 (HP 076)



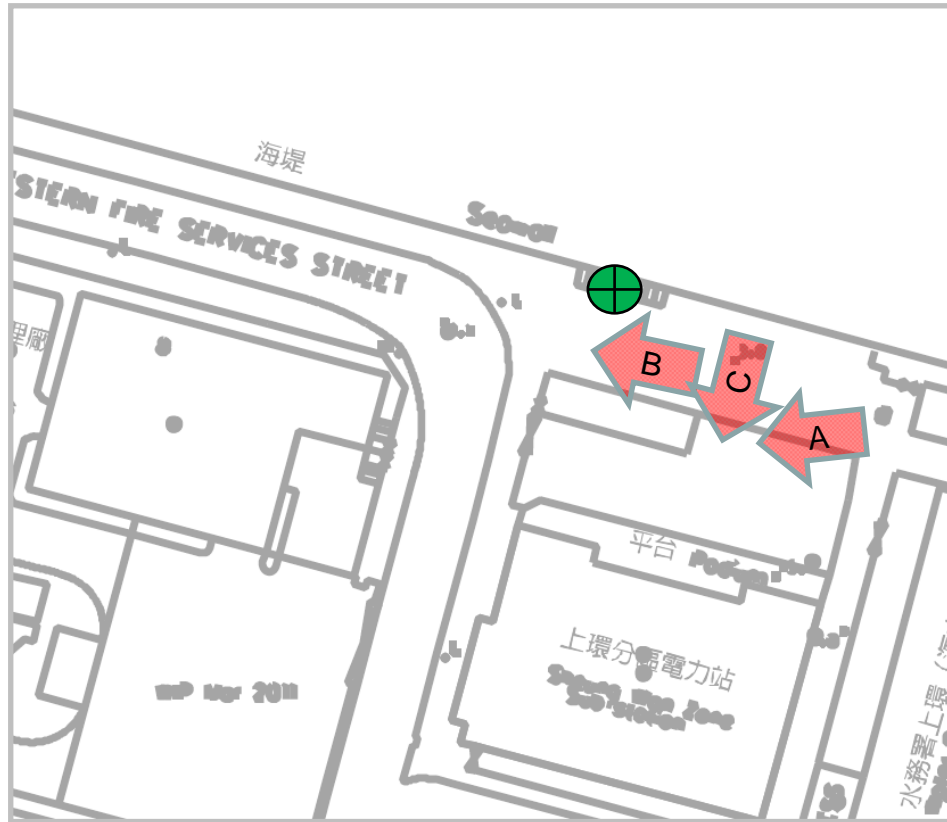
Location: At the seafront in Sheung Wan



Ancillary Facilities	Check Box
Shelter	✓
Seating Bench	✓
Parking Nearby	-



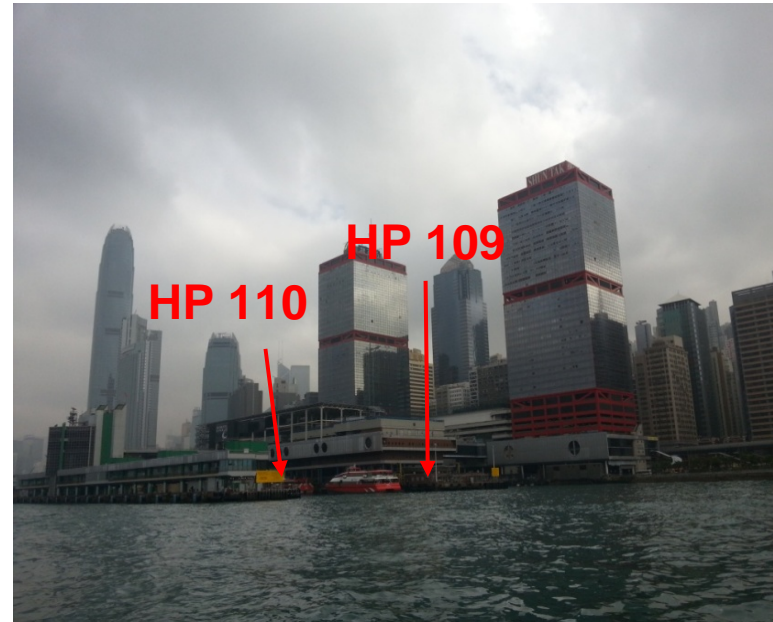
Sheung Wan Landing No. 1 (HP 076)



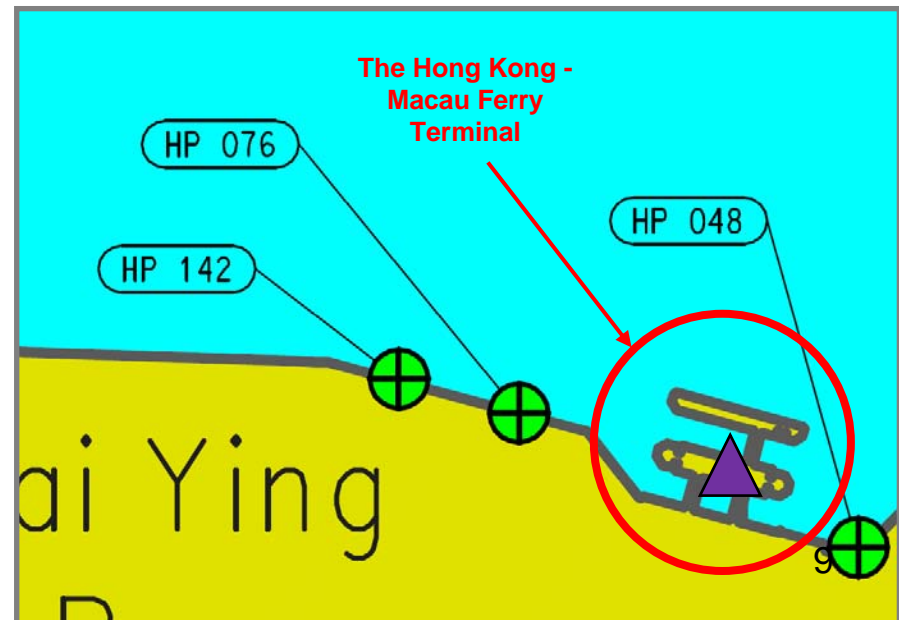
The Hong Kong-Macau Ferry Terminal and its landing steps (HP109 and HP110 (Not open to public))



Location: At the seafront in Sheung Wan



Ancillary Facilities	Check Box
Shelter	✓
Seating Bench	✓
Parking Nearby	✓



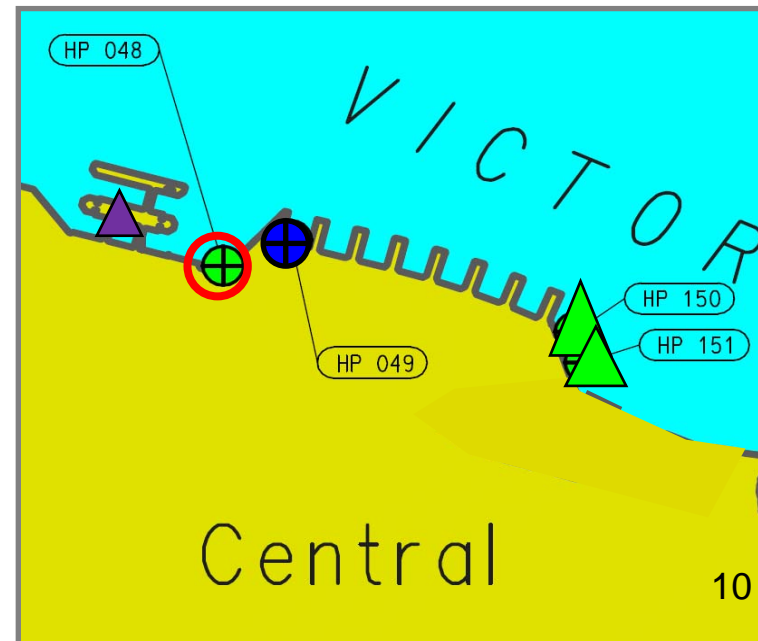
Central Landing No. 10 (HP 048)



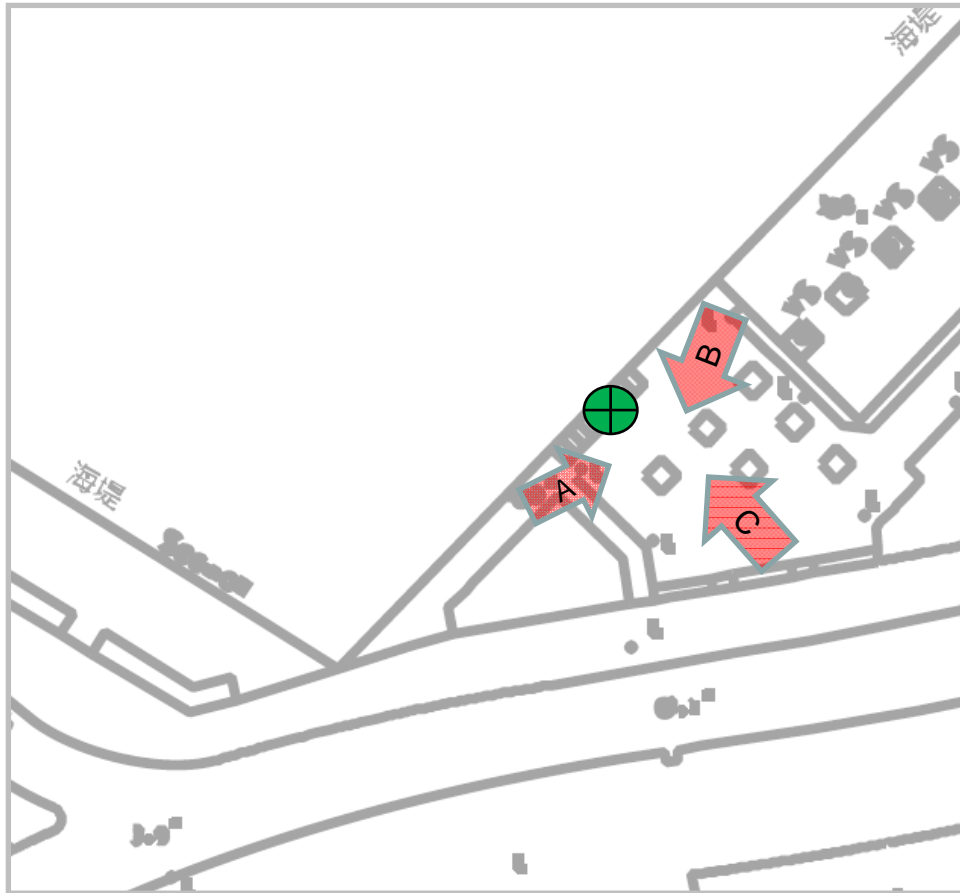
Location: At the seafront in Central



Ancillary Facilities	Check Box
Shelter	✓
Seating Bench	✓
Parking Nearby	✓ In HK-Macau Ferry Terminal



Central Landing No. 10 (HP 048)



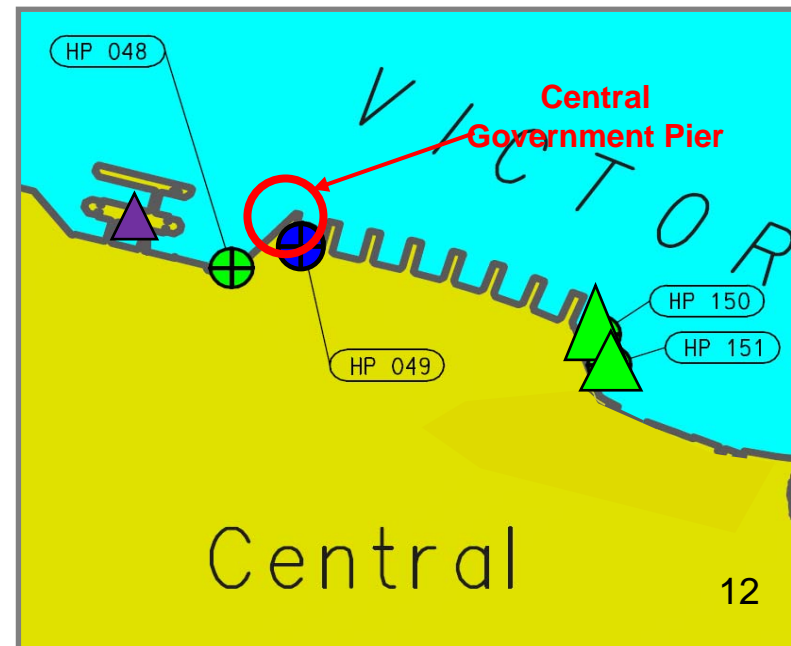
Central Government Pier (HP 091) and its landing steps (Not open to public)



Location: At the seafront in Central



Ancillary Facilities	Check Box
Shelter	✓
Seating Bench	✓
Parking Nearby	✓



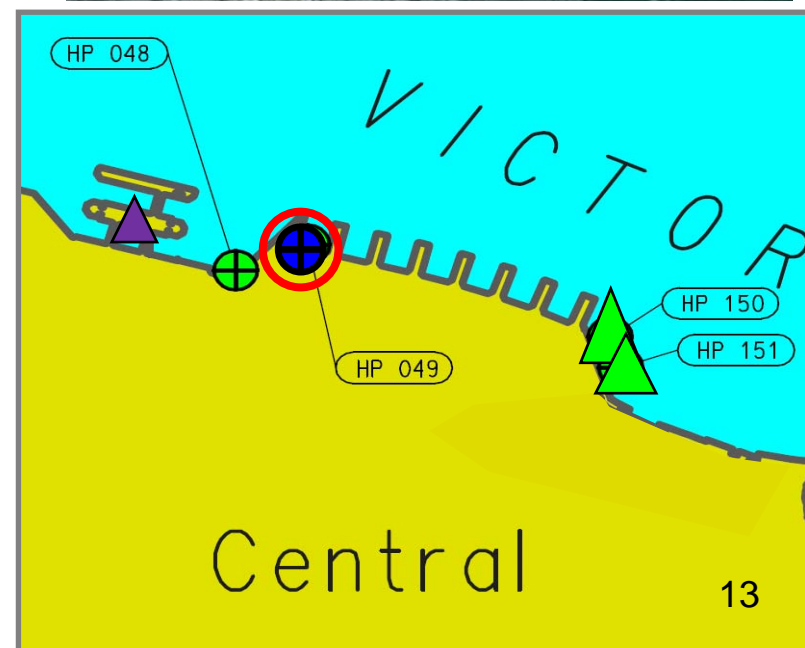
Central Landing No. 5 (HP 049)
(Not open to public)



Location: Adjacent to the Central Government Pier



Ancillary Facilities	Check Box
Shelter	-
Seating Bench	-
Parking Nearby	✓



Central Pier No. 2 (HP 146)
(for franchised vessels only)

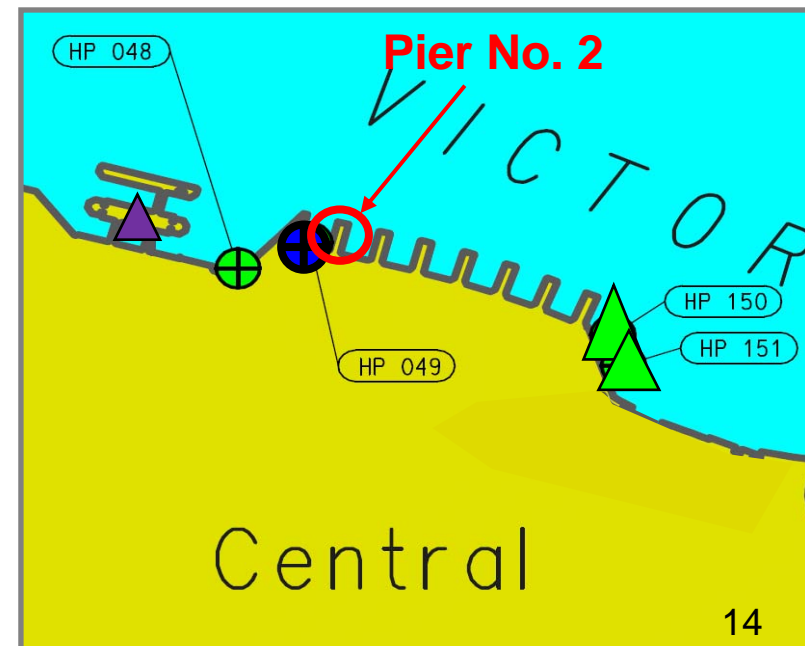


Location: At the seafront in Central

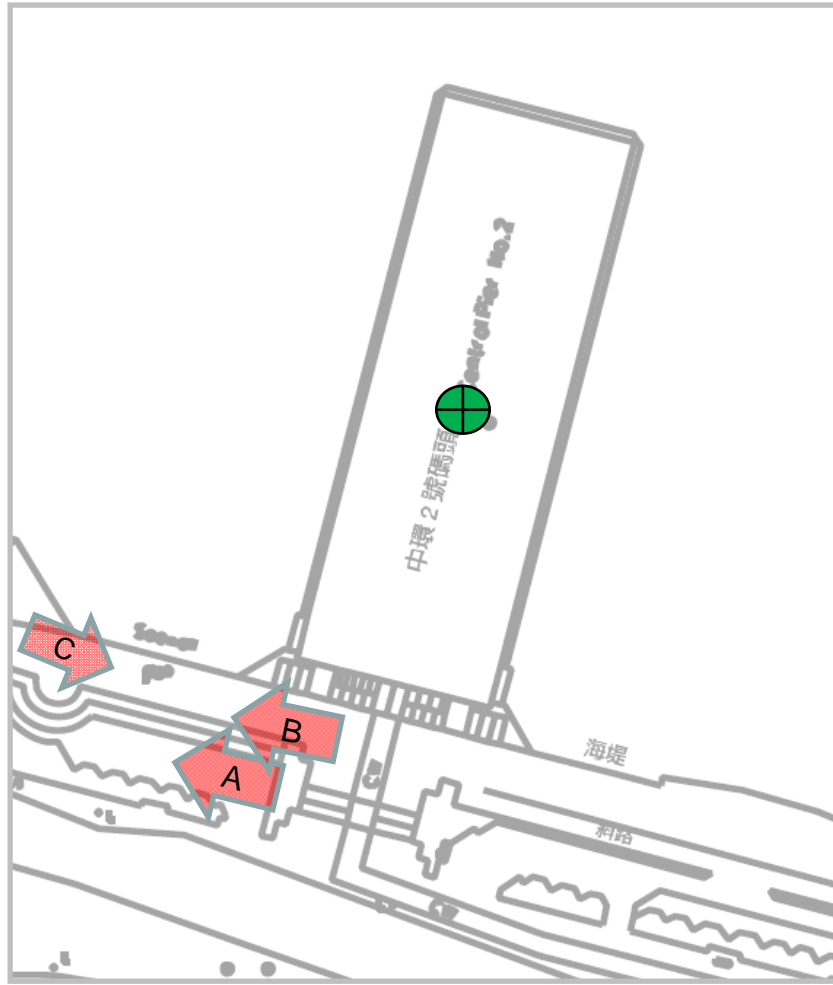


Park Island ↔ Central

Ancillary Facilities	Check Box
Shelter	✓
Seating Bench	✓
Parking Nearby	✓ In International Finance Centre (IFC)



Central Pier No. 2 (HP 146)



Central Pier No. 3 (HP 134)
(for franchised vessels only)

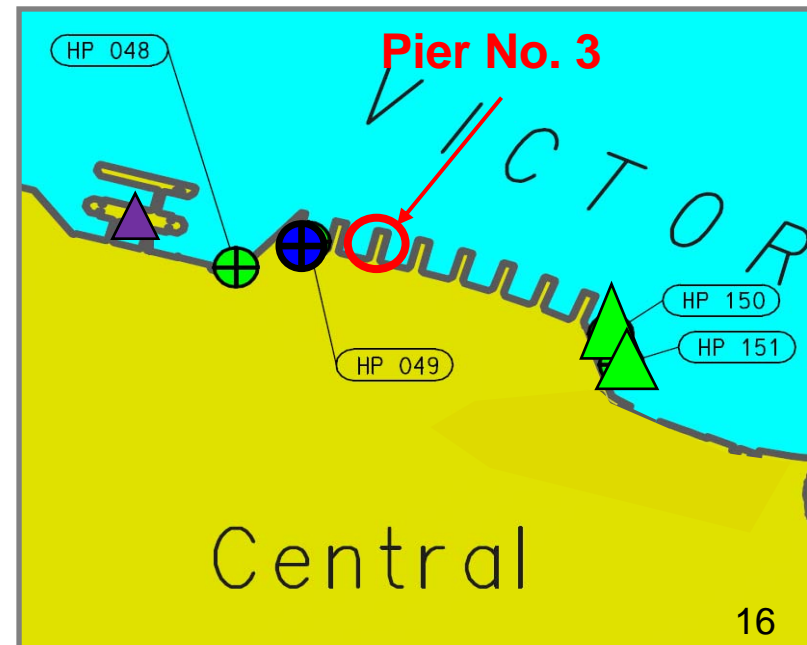


Location: At the seafront in Central

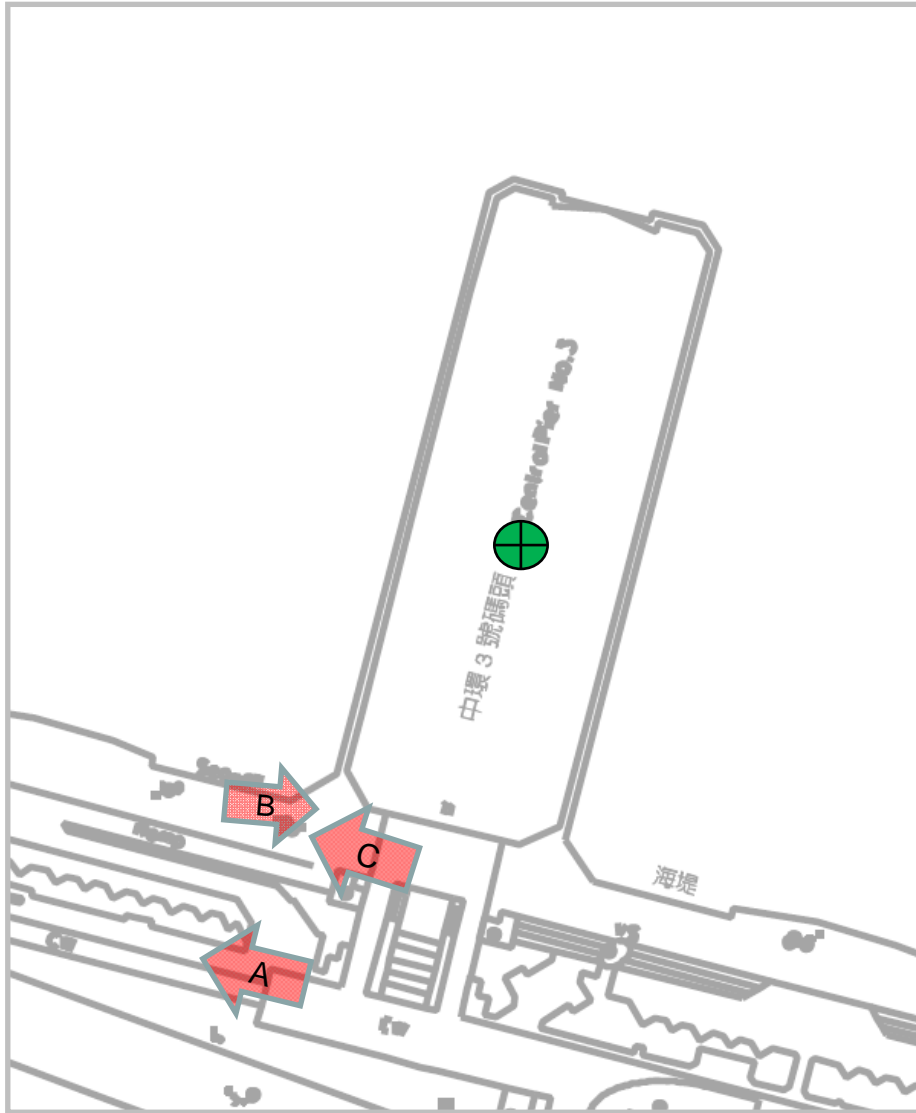


Discovery Bay ↔ Central

Ancillary Facilities	Check Box
Shelter	✓
Seating Bench	✓
Parking Nearby	✓ In IFC



Central Pier No. 3 (HP 134)



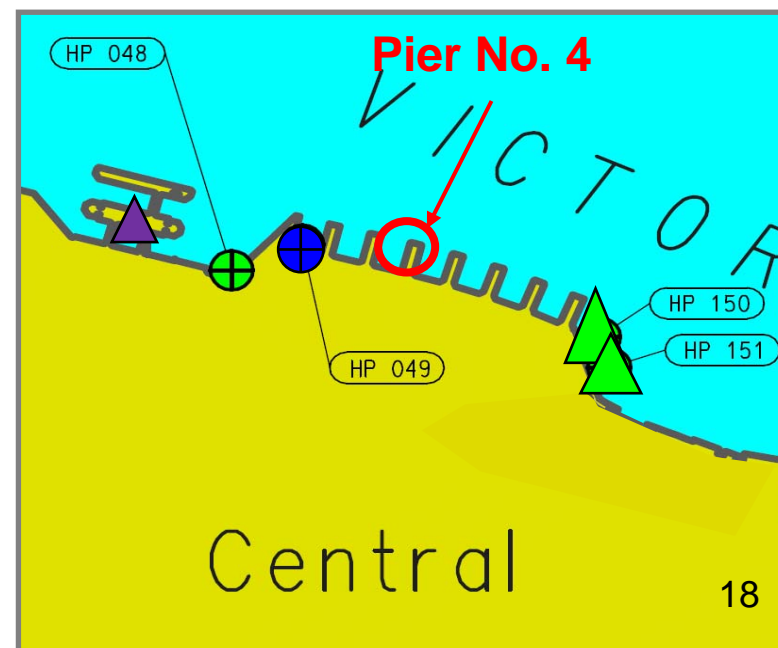
Central Pier No. 4 (HP 135)
(for franchised vessels only)

Location: At the seafront in Central

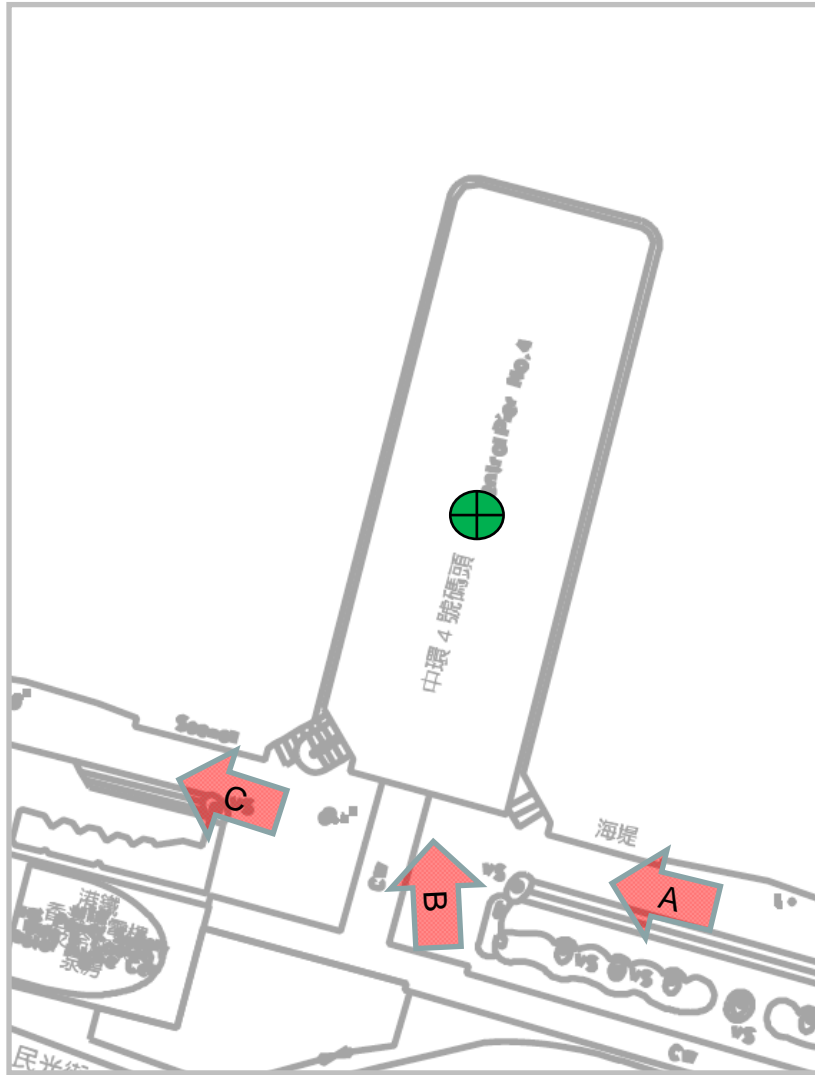


- (i) Sok Kwu Wan of Lamma Island ↔ Central (Western Pier)
- (ii) Yung Shue Wan of Lamma Island ↔ Central (Eastern Pier)

Ancillary Facilities	Check Box
Shelter	✓
Seating Bench	✓
Parking Nearby	✓ In IFC



Central Pier No. 4 (HP 135)



Central Pier No. 5 (HP 123)
(for franchised vessels only)

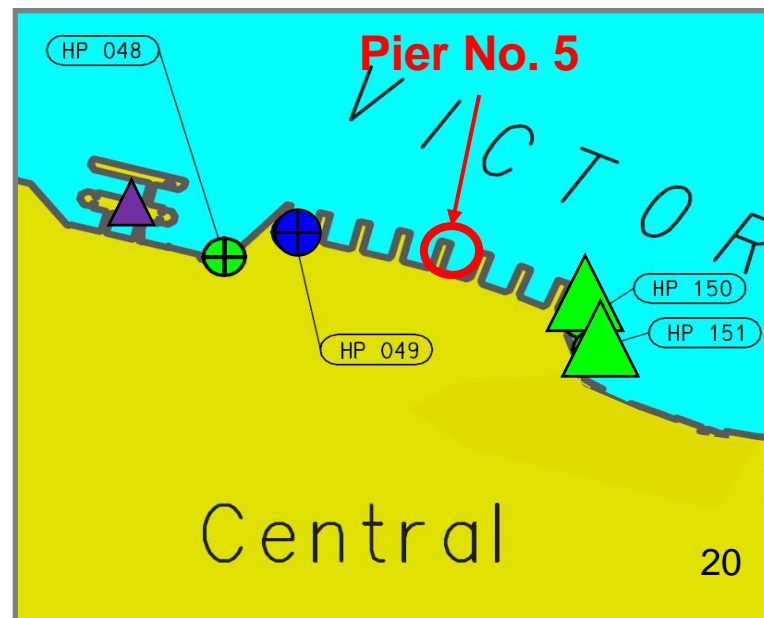


Location: At the seafront in Central

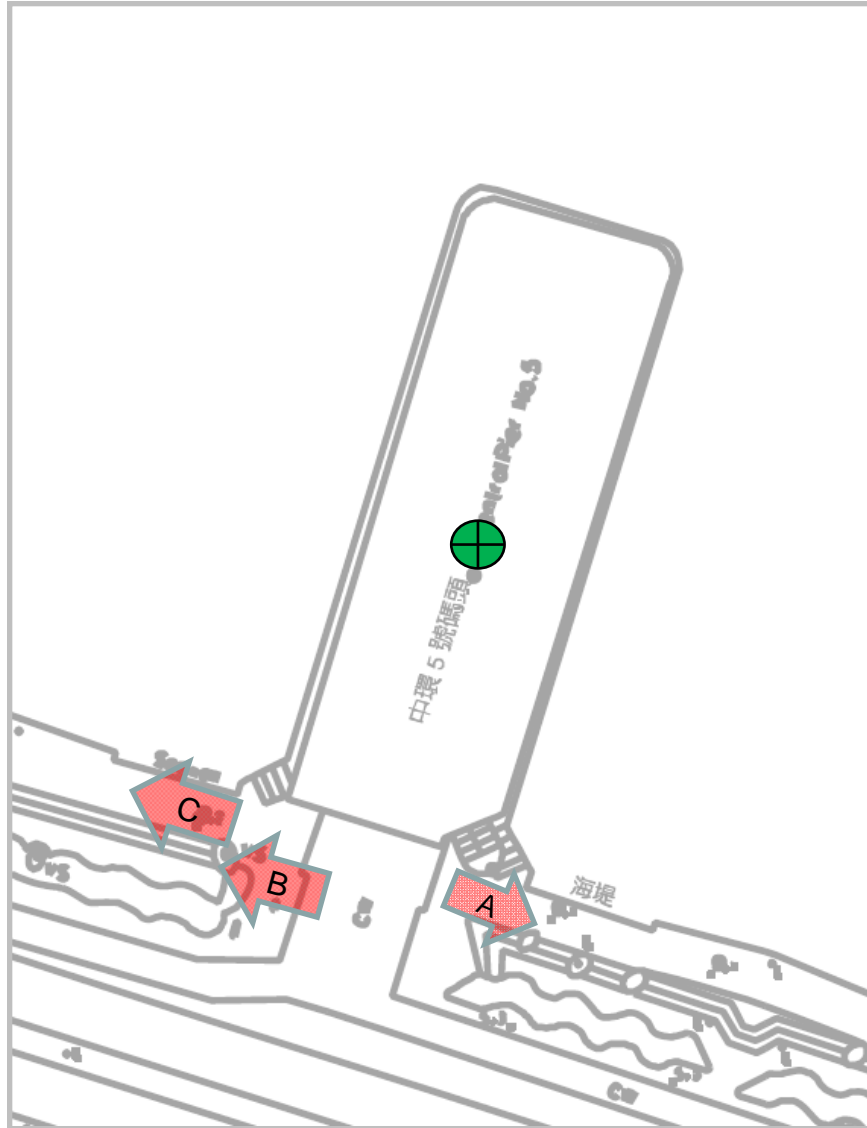


Cheung Chau ↔ Central

Ancillary Facilities	Check Box
Shelter	✓
Seating Bench	✓
Parking Nearby	✓ In IFC



Central Pier No. 5 (HP 123)



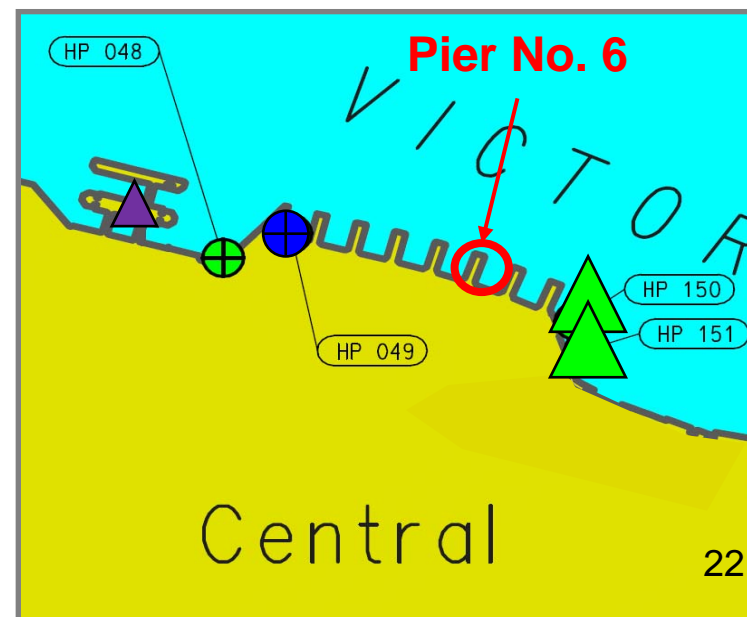
Central Pier No. 6 (HP 124)
(for franchised vessels only)

Location: At the seafront in Central

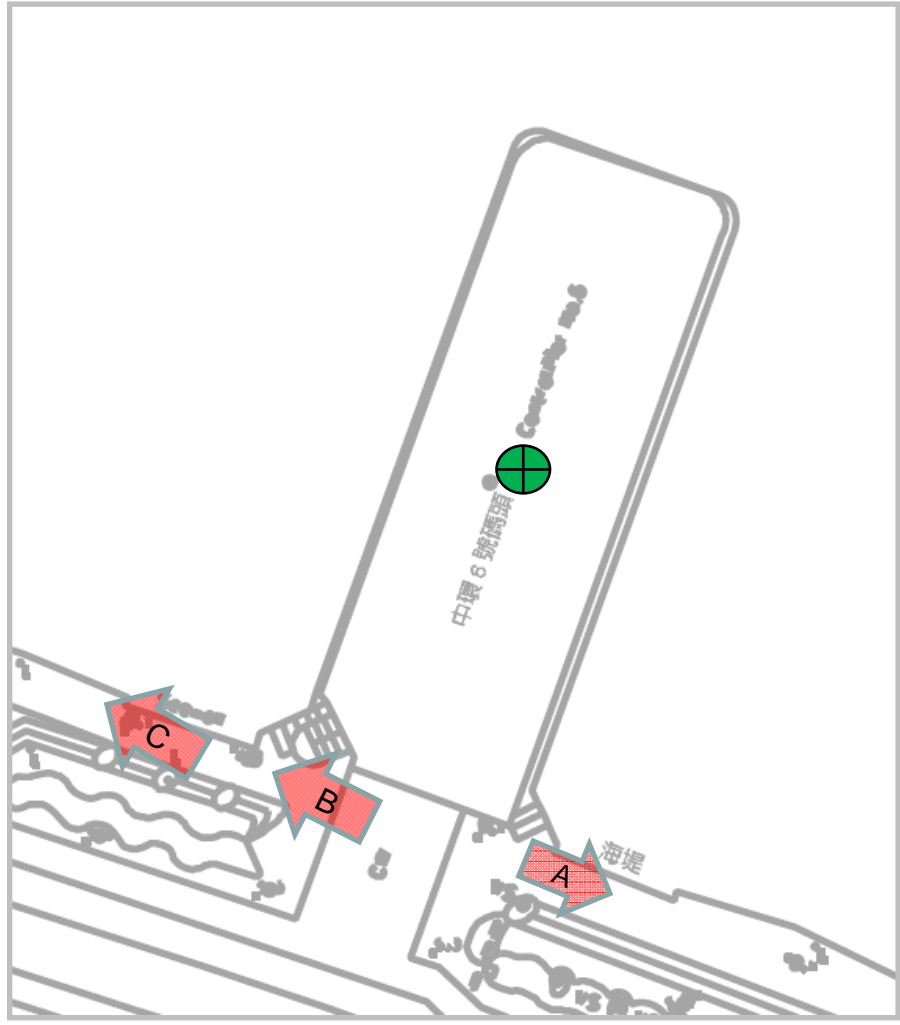


- (i) Peng Chau ↔ Central (Western Pier)
- (ii) Mui Wo ↔ Central (Eastern Pier)

Ancillary Facilities	Check Box
Shelter	✓
Seating Bench	✓
Parking Nearby	✓ In IFC



Central Pier No. 6 (HP 124)



Central Pier No. 7 (HP 125)
(for franchised vessels only)

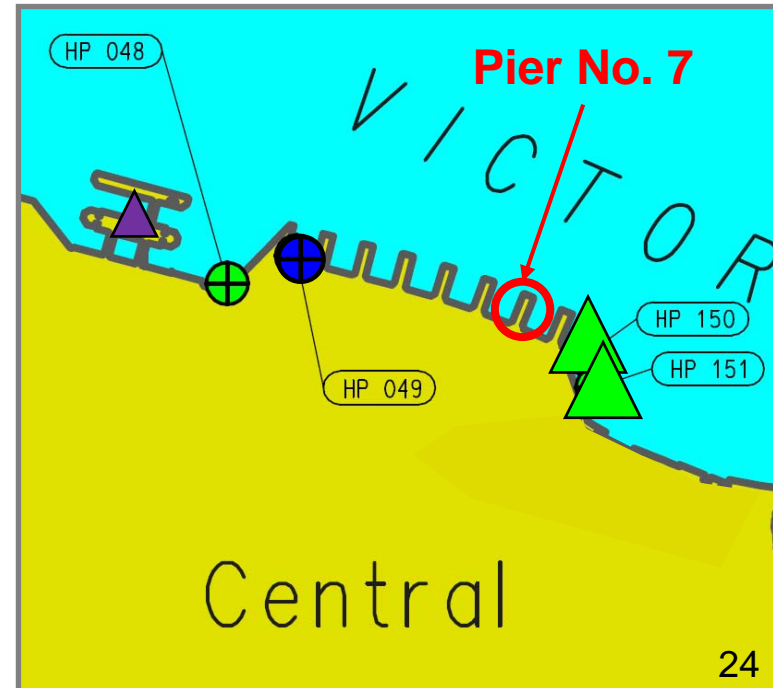


Location: At the seafront in Central

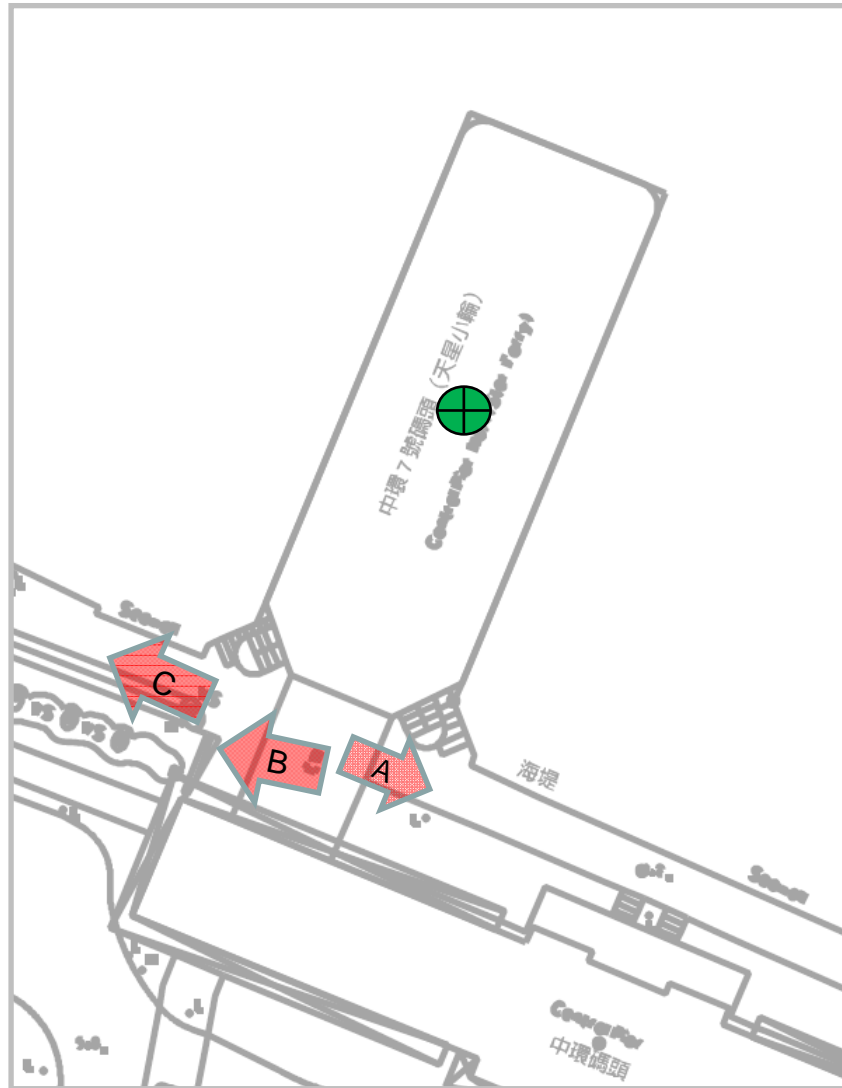


Tsim Sha Tsui ↔ Central

Ancillary Facilities	Check Box
Shelter	✓
Seating Bench	✓
Parking Nearby	✓ In IFC



Central Pier No. 7 (HP 125)



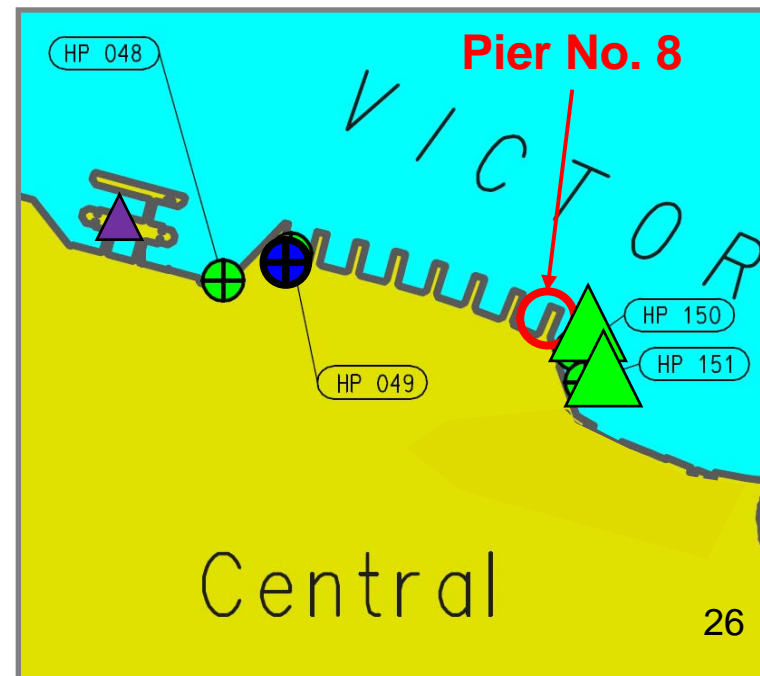
Central Pier No. 8 (HP 149)
(for franchised vessels only)



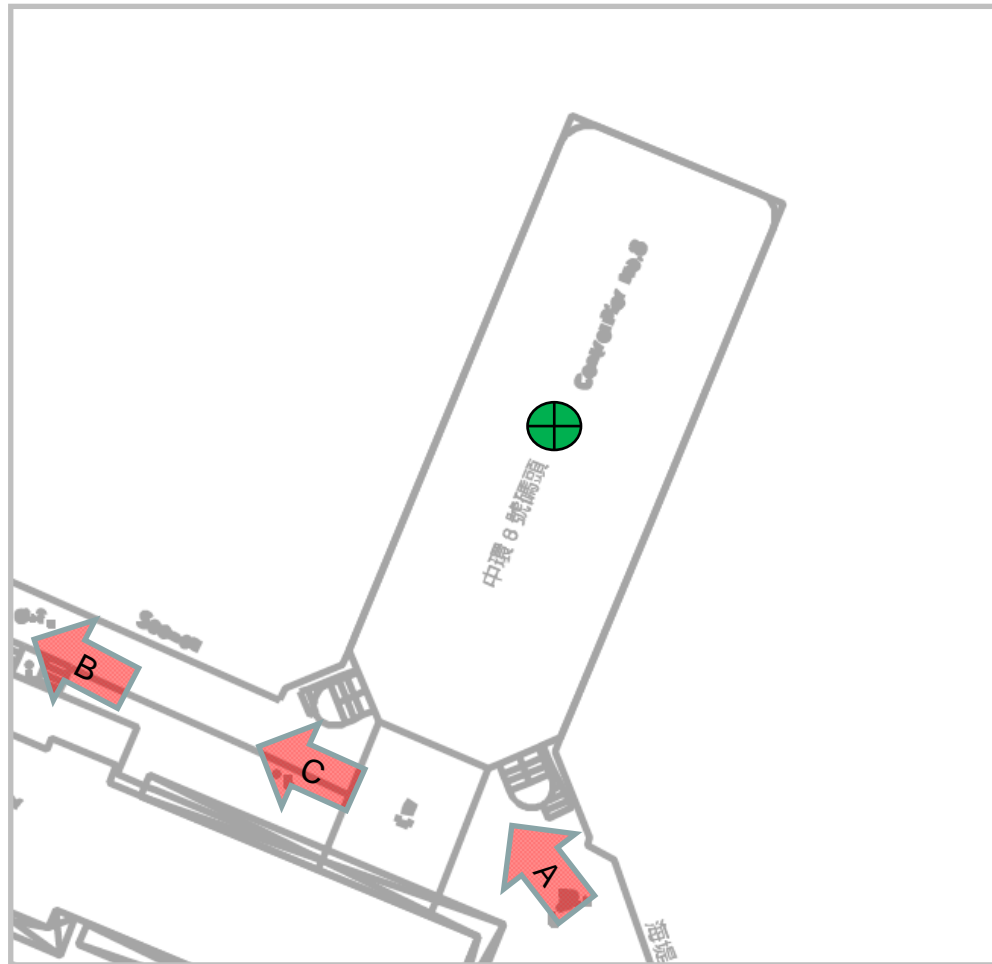
Location: At the seafront in Central



Ancillary Facilities	Check Box
Shelter	✓
Seating Bench	✓
Parking Nearby	✓ In IFC



Central Pier No. 8 (HP 149)



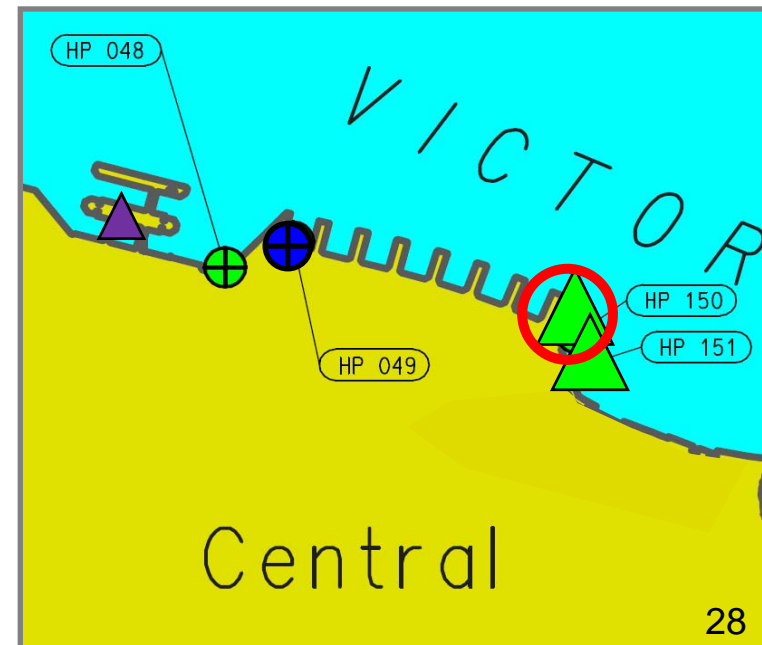
Central Pier No. 9 (HP 150)



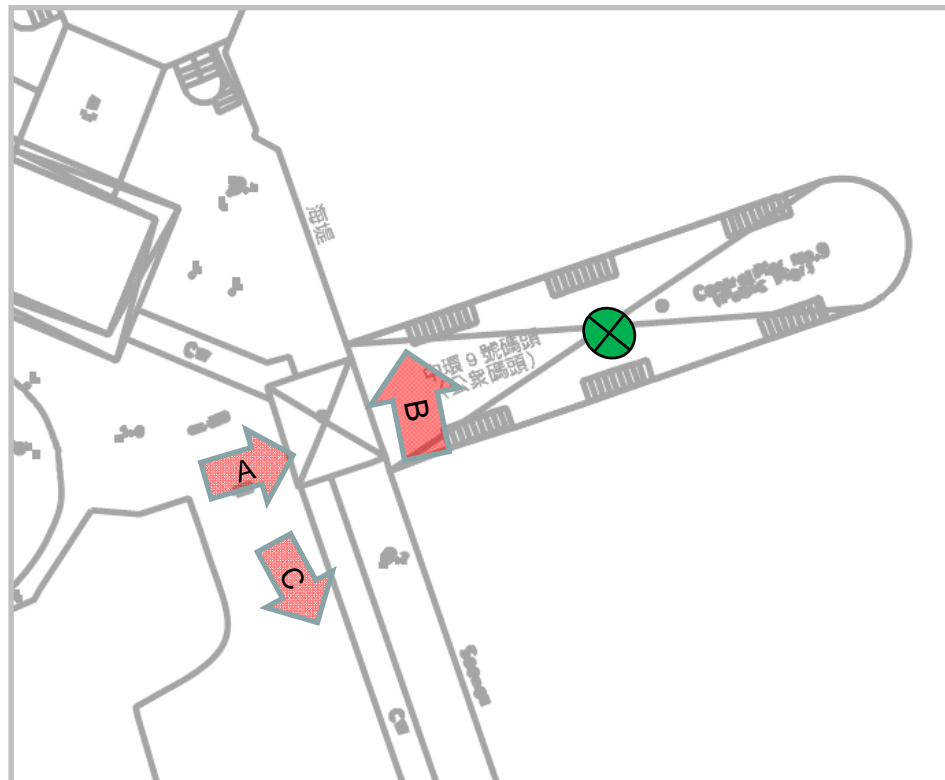
Location: At the seafront in Central



Ancillary Facilities	Check Box
Shelter	✓
Seating Bench	✓
Parking Nearby	✓ In IFC



Central Pier No. 9 (HP 150)



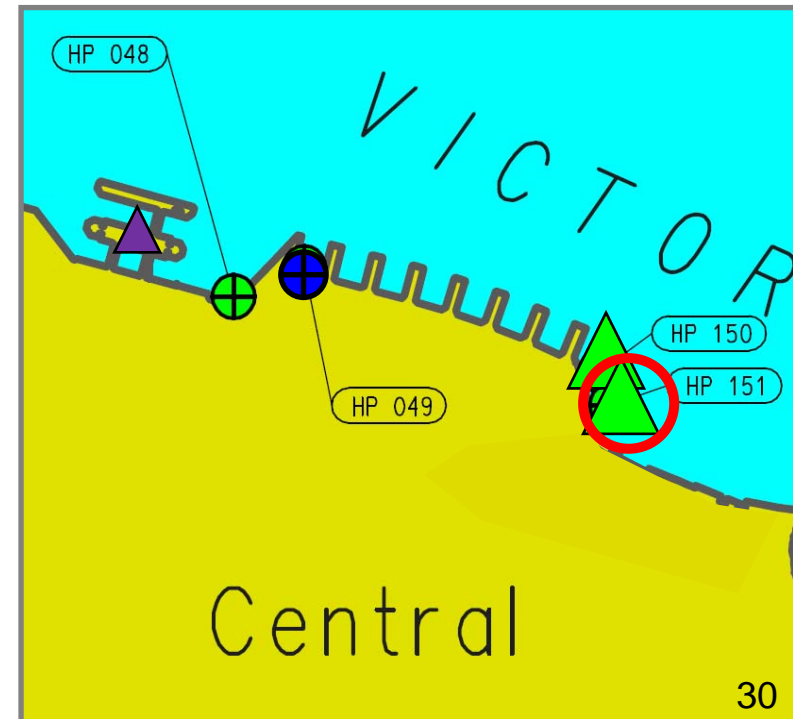
Central Pier No. 10 (HP 151)



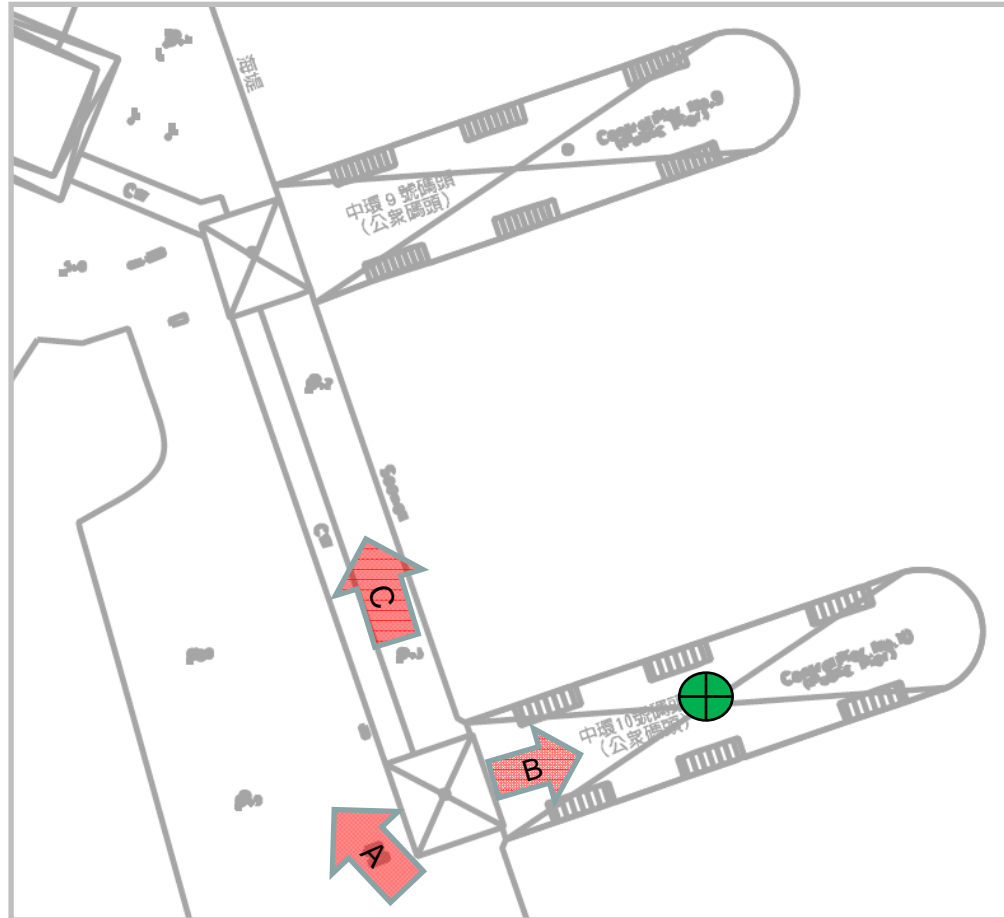
Location: At the seafront in Central



Ancillary Facilities	Check Box
Shelter	✓
Seating Bench	✓
Parking Nearby	✓ In IFC

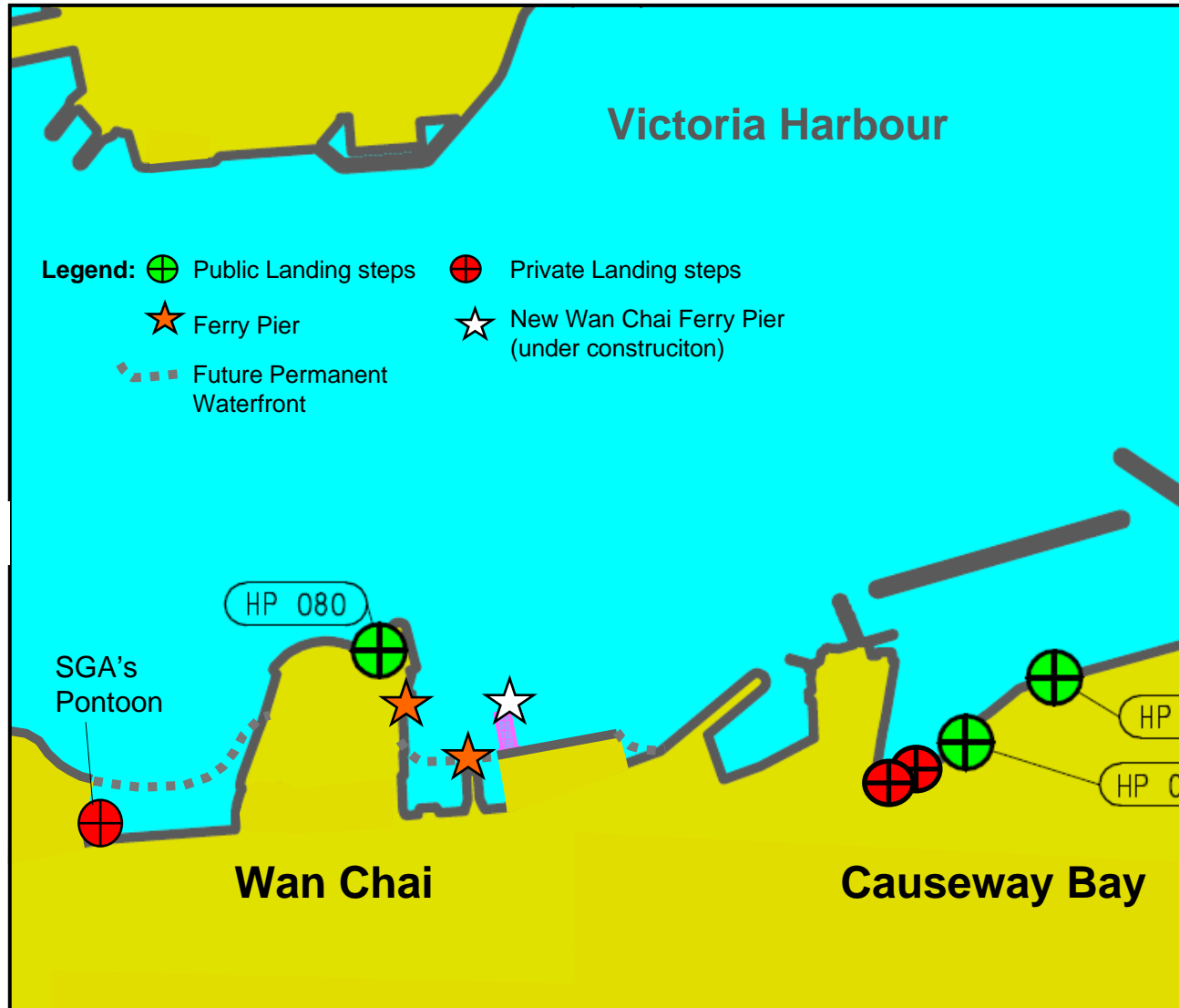


Central Pier No. 10 (HP 151)

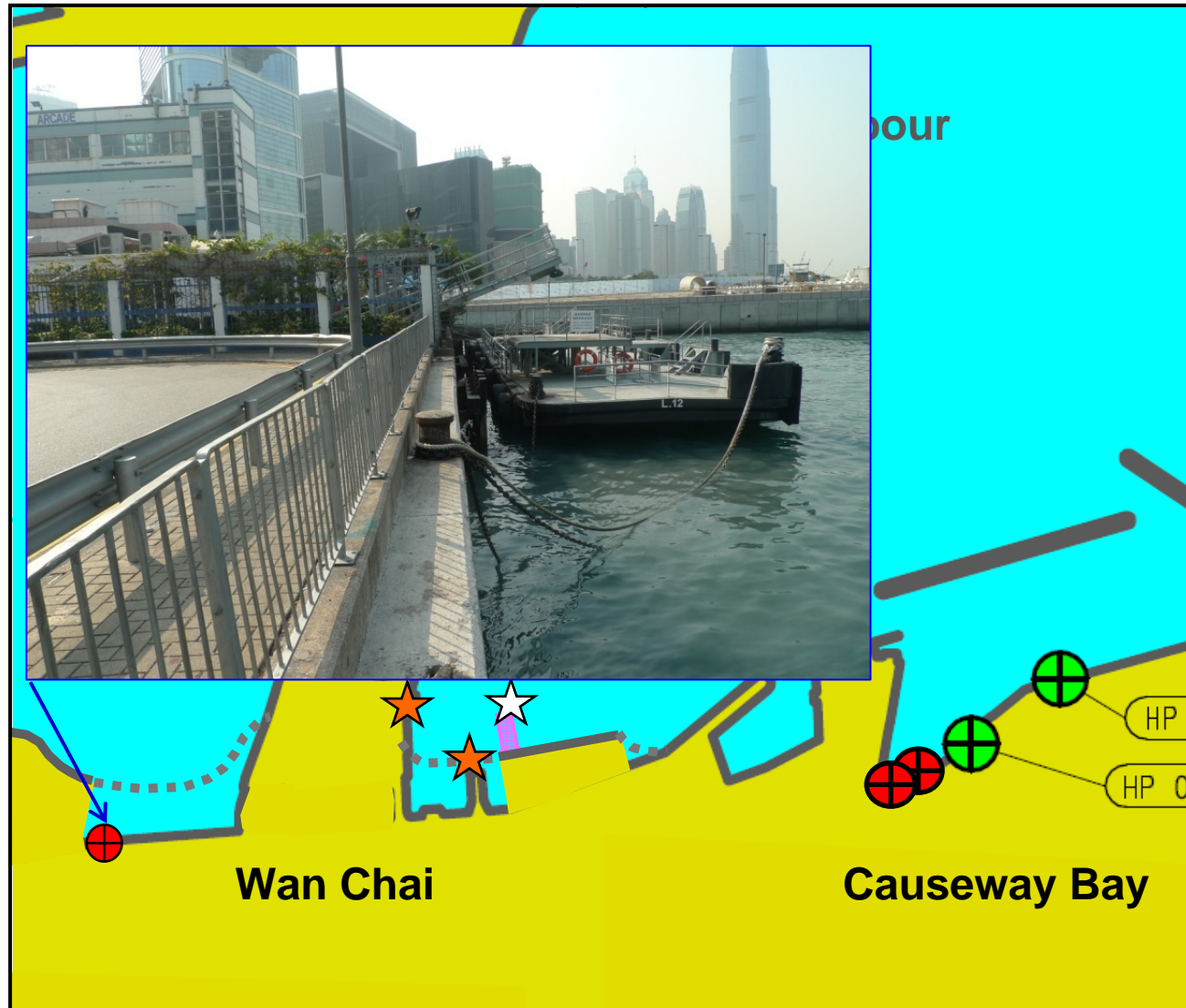


Landing Facilities in Wan Chai and Causeway Bay

Landing Facilities in Wan Chai and Causeway Bay



Existing Private Landing Steps at Servicemens' Guide Association (SGA)



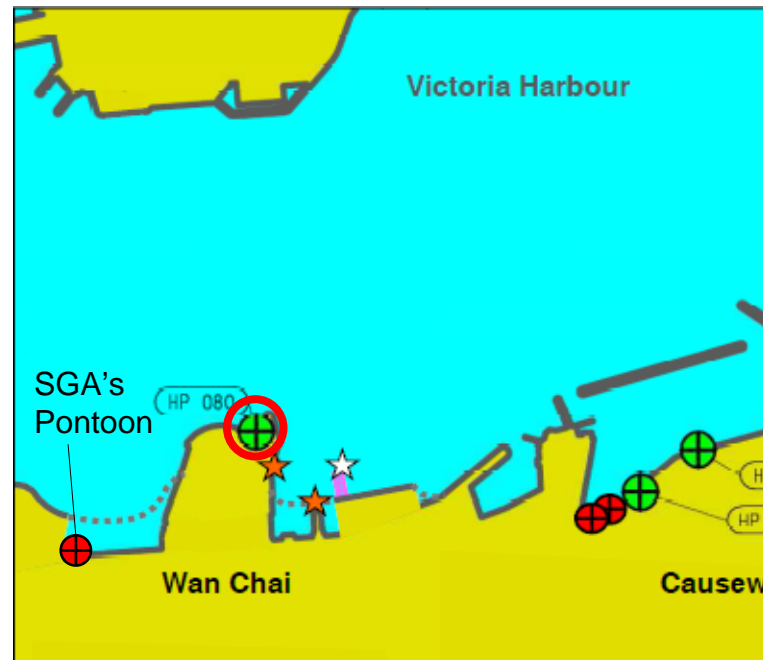
Hong Kong Convention & Exhibition Central Landing (HP 080)



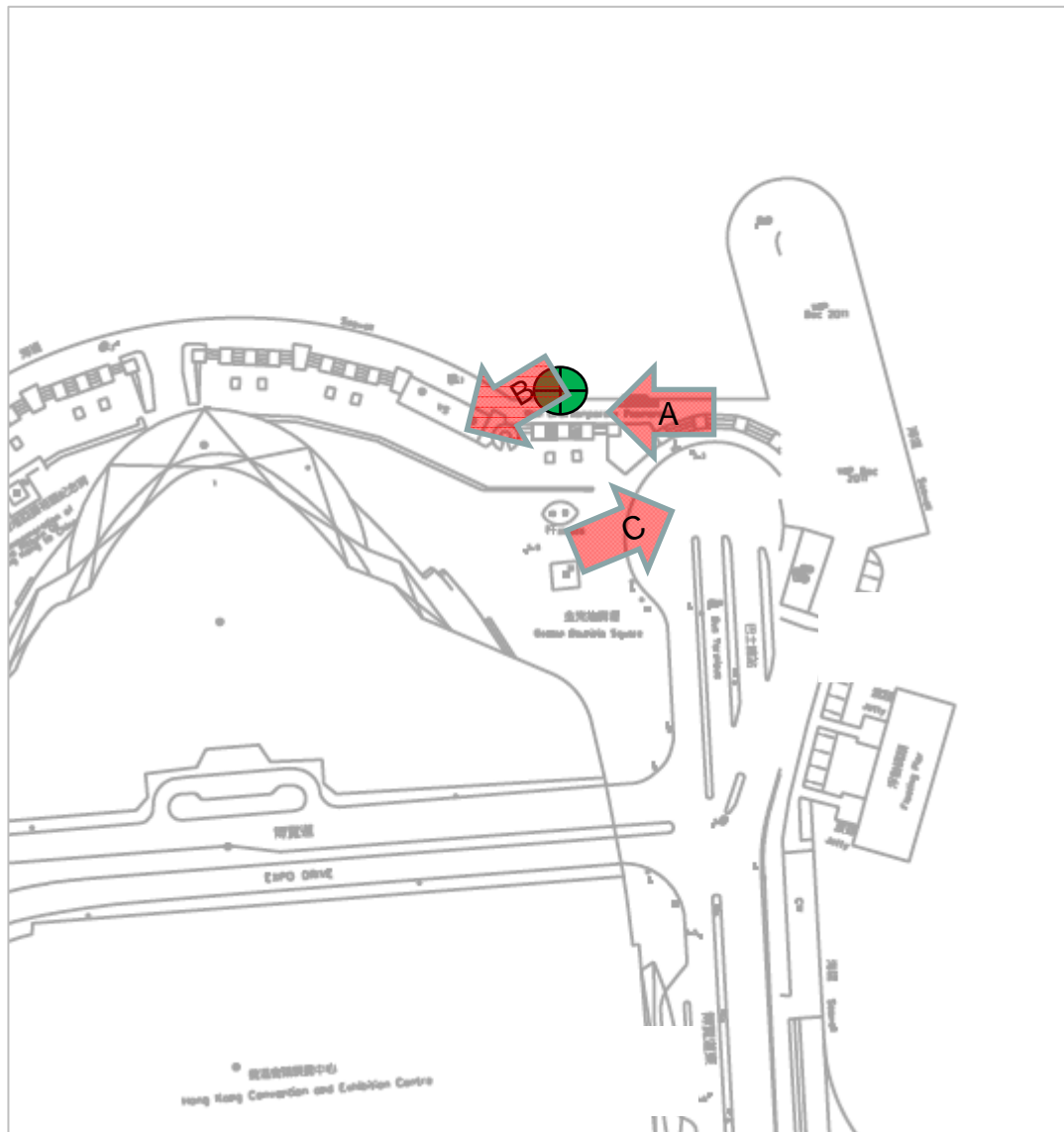
Location: At Open Space, North of Golden Bauhinia Square



Ancillary Facilities	Check Box
Shelter	-
Seating Bench	✓
Parking Nearby	✓ In HKCEC



Hong Kong Convention & Exhibition Central Landing (HP 080)



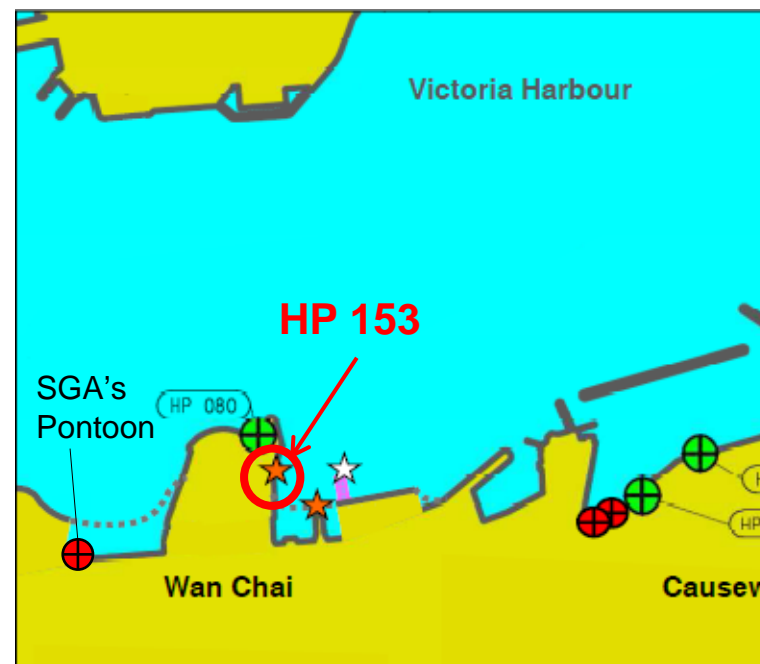
Wan Chai Pontoon Pier (HP 153)
(for franchised vessels only)



Location: East to Golden Bauhinia Square



Ancillary Facilities	Check Box
Shelter	✓
Seating Bench	-
Parking Nearby	✓ In HKCEC



Wan Chai (East) Ferry Pier (HP 130)
(for franchised vessels only)

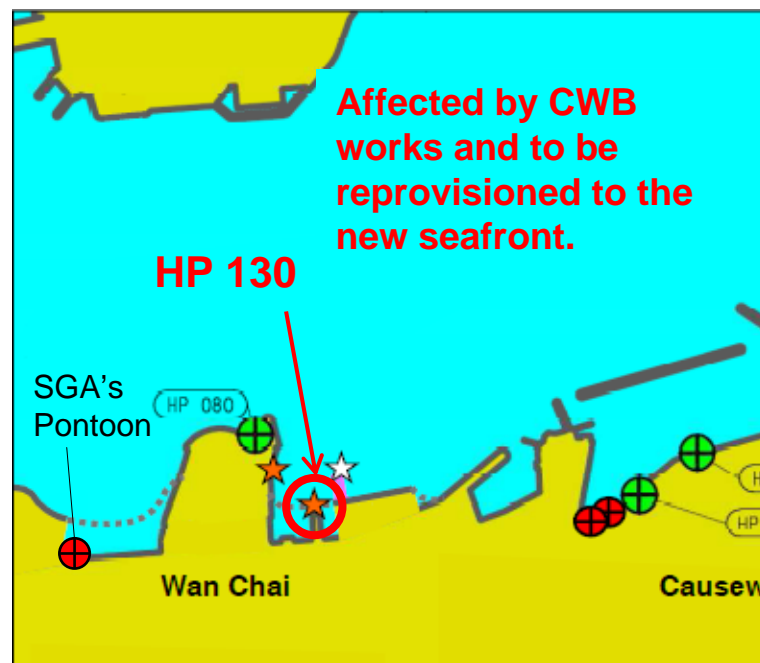
To be demolished and reprovisioned



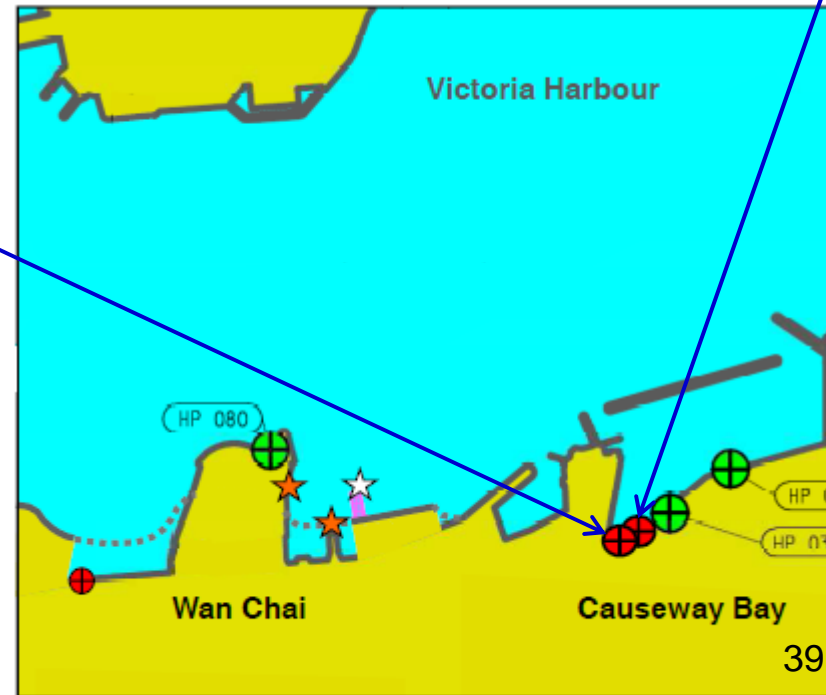
Location: Hung Hing Road & East to HKCEC Extension



Ancillary Facilities	Check Box
Shelter	✓
Seating Bench	-
Parking Nearby	✓ In Great Eagle Centre



Existing Private Landing Steps at CBTS

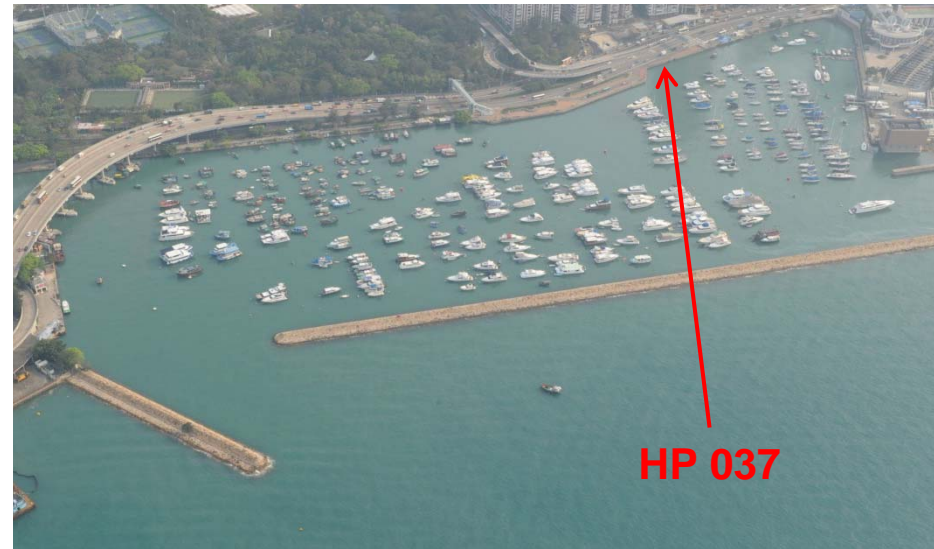


Ancillary Facilities	Check Box
Shelter	-
Seating Bench	-
Parking Nearby	✓ In World Trade Centre

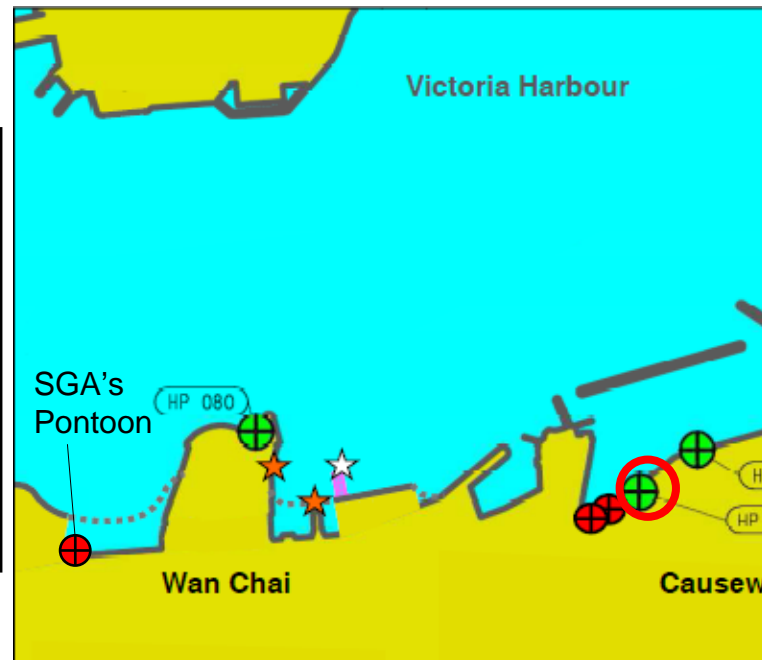
CBTS Landing No. 8 (HP 037)



Location: At Open Space and within Causeway Bay Typhoon Shelter (CBTS)



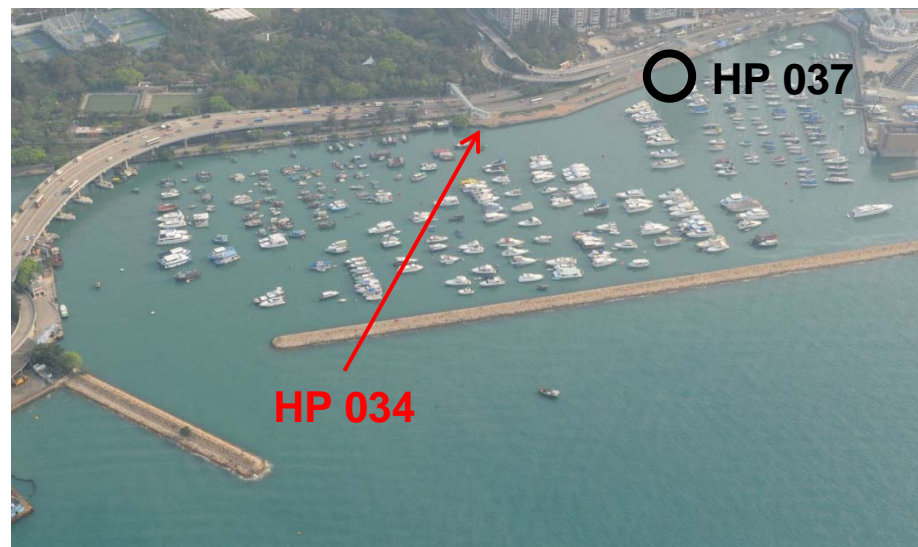
Ancillary Facilities	Check Box
Shelter	-
Seating Bench	-
Parking Nearby	✓ In World Trade Centre



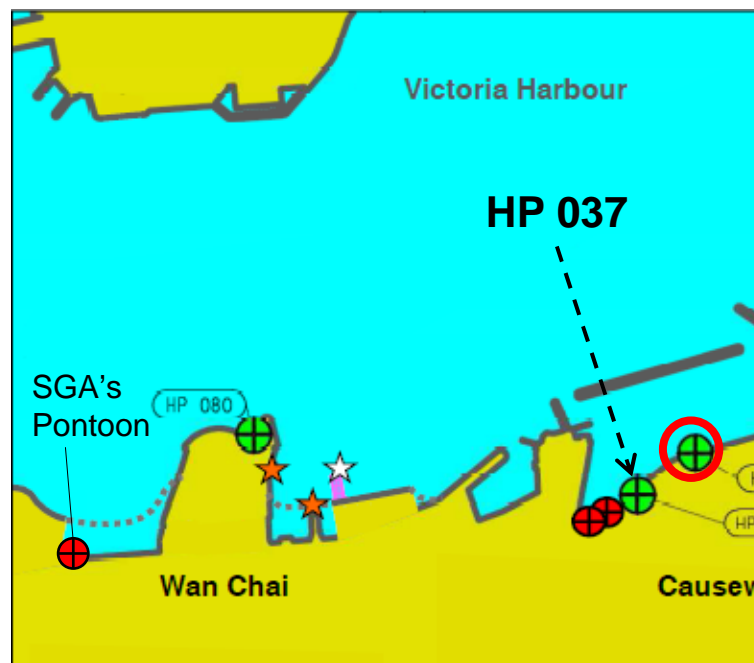
CBTS Landing No. 7 (HP 034)



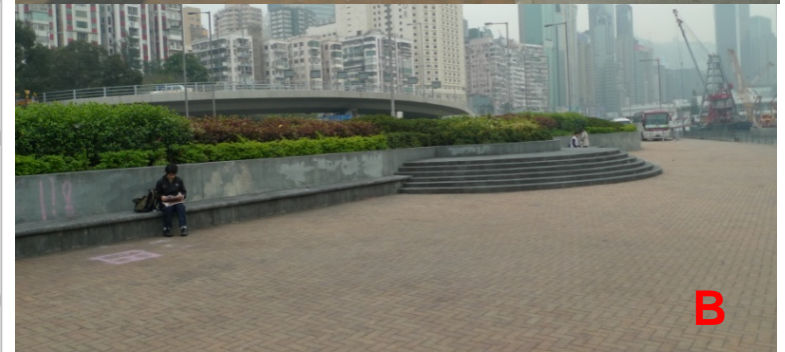
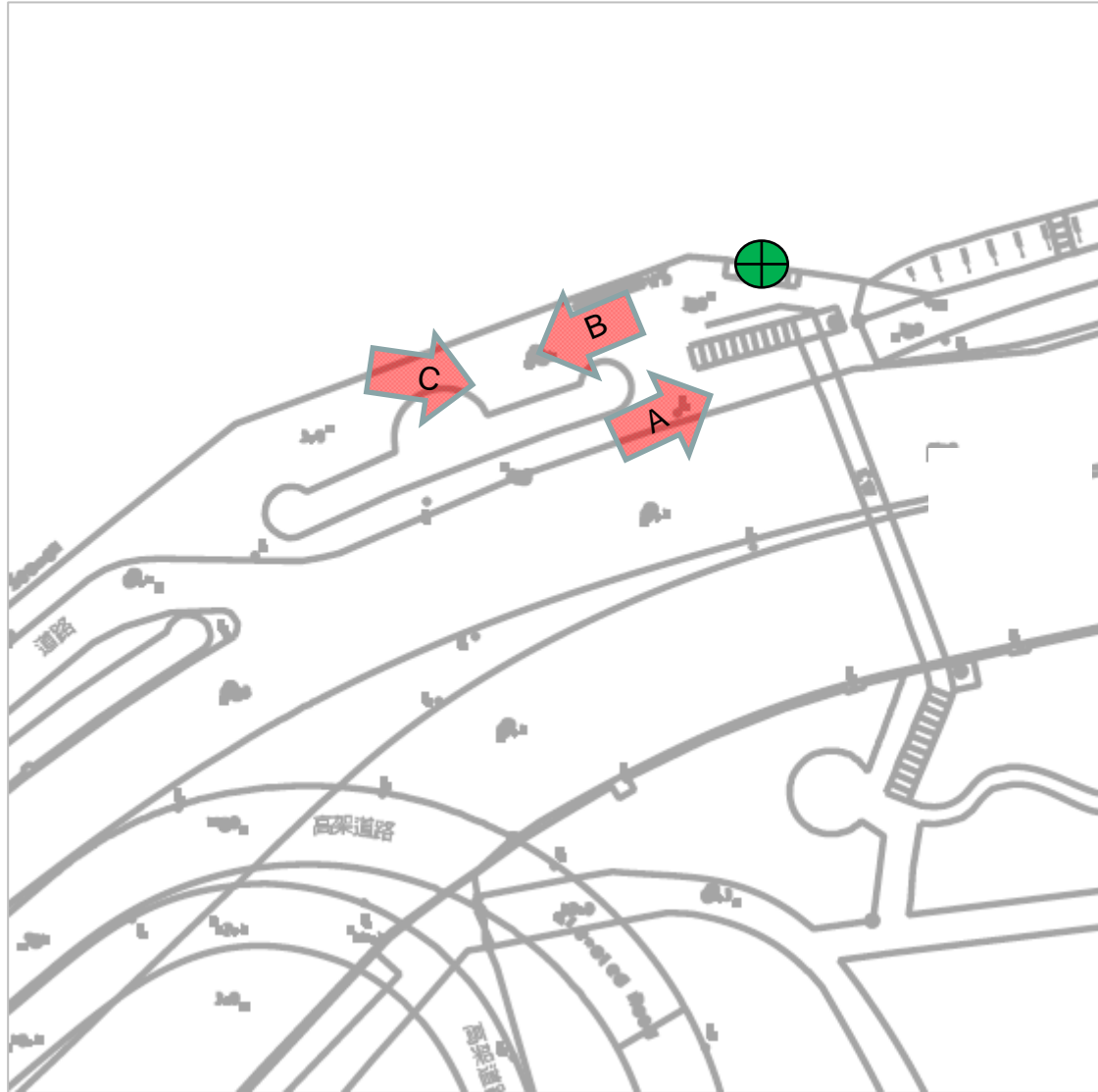
Location: At Open Space and within Causeway Bay Typhoon Shelter (CBTS)



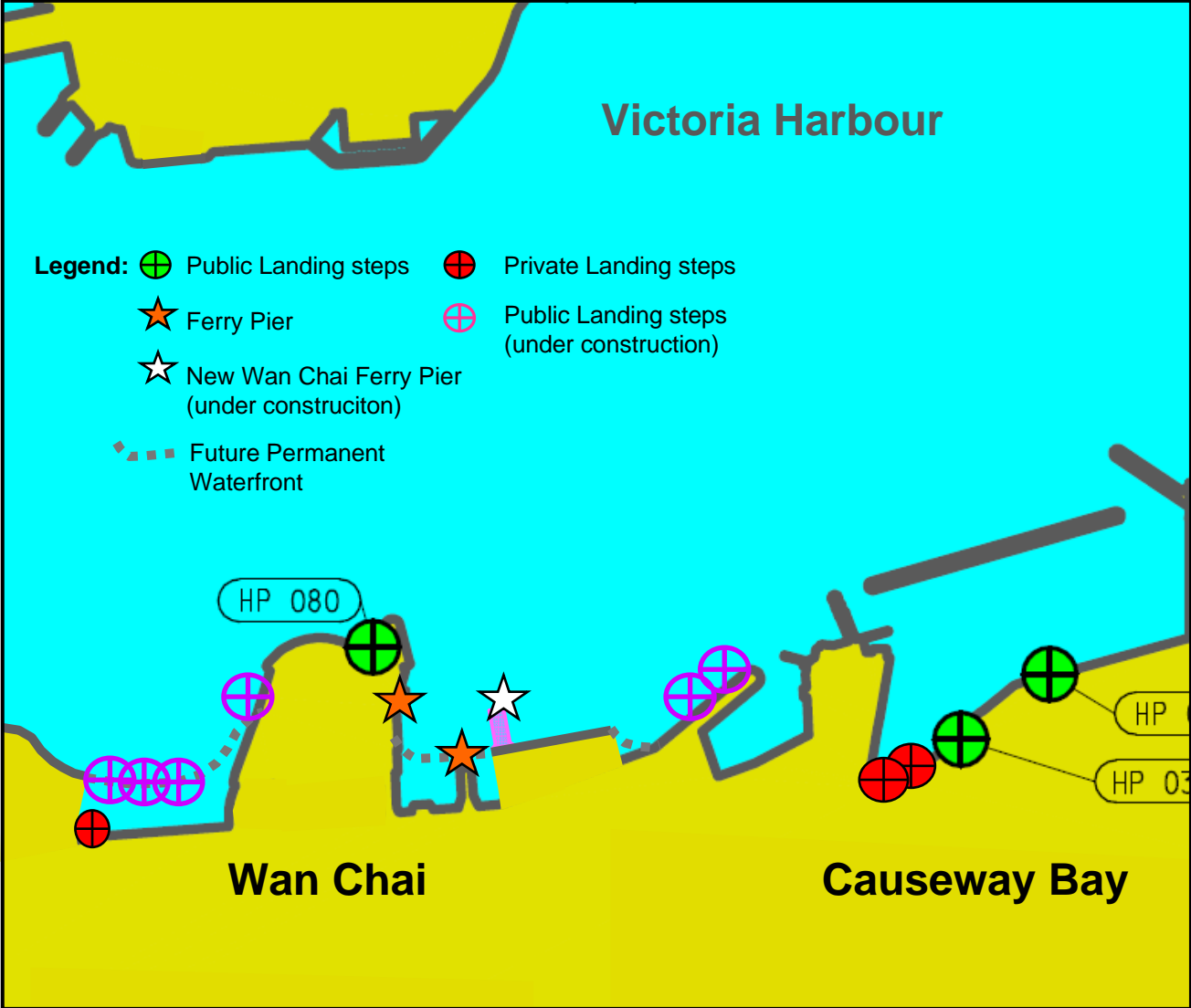
Ancillary Facilities	Check Box
Shelter	-
Seating Bench	✓
Parking Nearby	✓ In World Trade Centre



CBTS Landing No. 7 (HP 034)



Landing Steps at New Central & Wan Chai Waterfront under Construction



~ End ~