



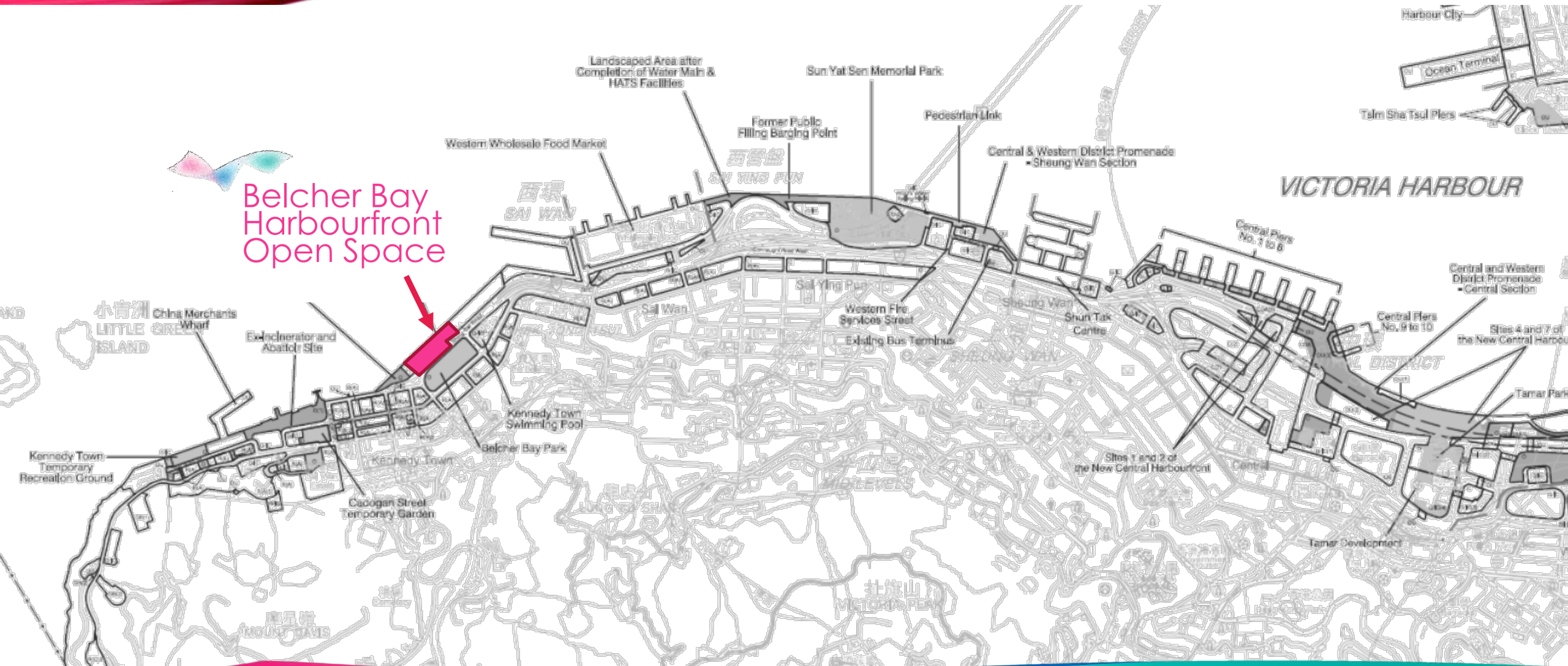
Study on the New Mode of Design and Management at the Belcher Bay Harbourfront Open Space

Harbour Office

Background



Belcher Bay Harbourfront Open Space





K-Farm

Approx. 5900 sqm

5m

172m

Boardwalk opened on: 29 March 2019
Open Space opened on: 9 October 2020

Overall size: approx. 5,900 square metres
Water frontage: 172 metres



Site Dimension

Mid 2016

8/2018

3/2019

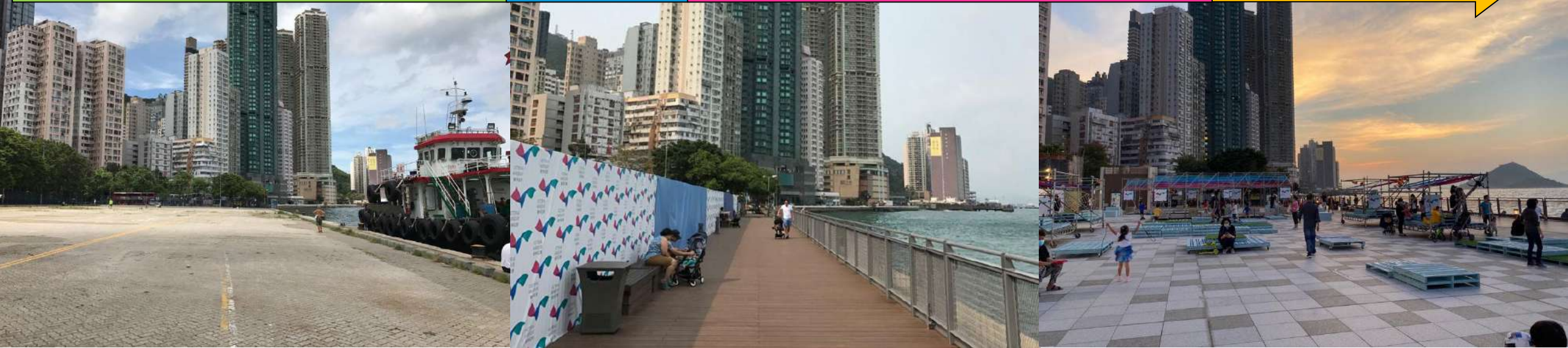
10/2020

Released from Public Cargo Working Area.
Planning of works

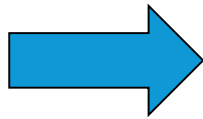
Works
commenced

Boardwalk section opened under incremental approach

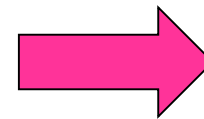
Full opening



August 2018
Disused Pier



March 2019
5-metres-wide boardwalk



October 2020
Full Opening



Opening Dates

Management & Maintenance Arrangement



“Check-in” opportunities



“Pop-up” Initiatives



“Open Management”



“Limited Edition”



“Engagement”



“Experimental”



“Empowerment”

Management Principles





Application for holding events / activities



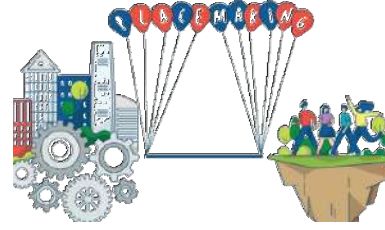
Littering



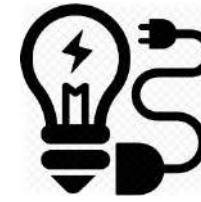
Security services



Horticultural maintenance



Place-making



Power supply / Light fittings maintenance



Hardware maintenance



Cleansing service



機電工程署
EMSD



民政事務總署
Home Affairs Department



發展局
Development Bureau



康樂及文化事務署
Leisure and Cultural Services Department



建築署
Architectural Services Department

Joint Management with Frequent Observations and Swift Response



Works Done



Oct 2020
Apr 2021 (Easter)

Dec 2020 (Christmas)
Feb 2021 (CNY)



Fixed Site Furnitures - Scaffolding



Oct 2020
Wood pallet

wood pallet with wheels
wood pallet with artificial turf





Plastic pallet with wheels

Dec 2020
Plastic pallet with CNY wrapping (Chinese calligraphy by NGO)



Plastic pallet with artificial turf

Mobile furnitures - Pallet





Oct 2020 Halloween

Dec 2020 Christmas



Festive Decoration



Feb 2021 CNY & Valentine's Day

Apr 2021 Easter



Festive Decoration

Coffee tables



Wood box tables

Long tables



Evovement of Tables



Sun loungers and stools



Long benches

Sun loungers with VH logos and new style

Evovement of Chairs





Cleansing Robot



Empowerment, Engagement & Experiment





From mobile Deer Cart to Photo Ops

Upcycling of site furnitures & materials





Mobile "Heart cart" from CNY to Easter theme decorations

Upcycling of site furnitures & materials (Con't)





Mobile CNY Candy Box change to Easter Egg waffles

Upcycling of site furnitures & materials (Con't)



Way Forward



1. Harbourfront shared space as an additional choice alongside conventional parks / promenades



2. Application of the shared space concept to more harbourfront sites where appropriate

Tsuen Wan Harbourfront

Water Sports and Recreation Precinct

3. More publicity on the concept and values



4. Enhance communication with stakeholders through a Harbourfront Ambassador Scheme

Way Forward – response to findings