



photo credit: Google Images

Lei Yue Mun Waterfront Enhancement Project

DESIGN CONCEPT

SITE CONDITION & DESIGN PERIMETERS

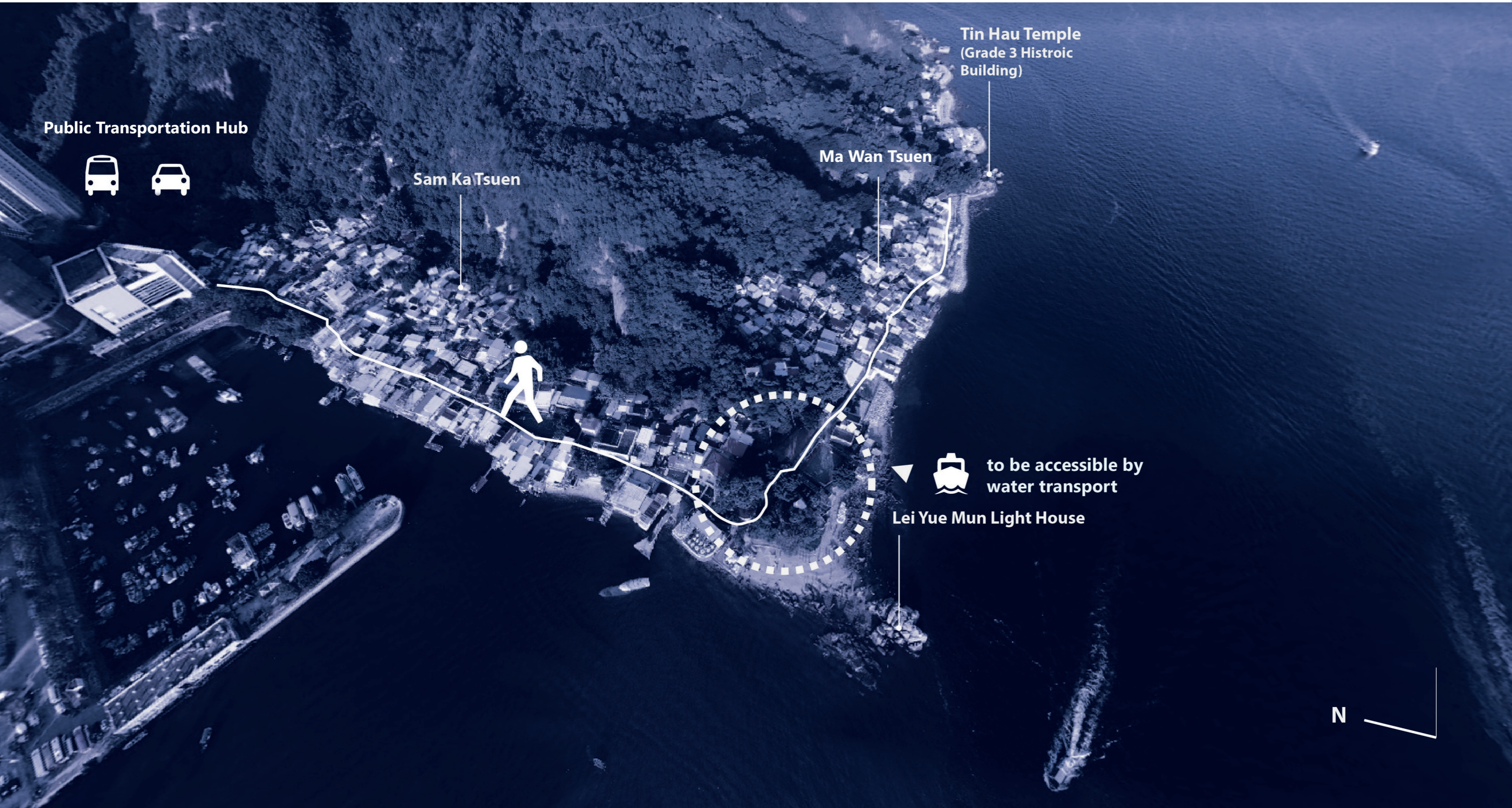


photo credit: Google Images

OVERALL SITE MAP : 1500 @A3

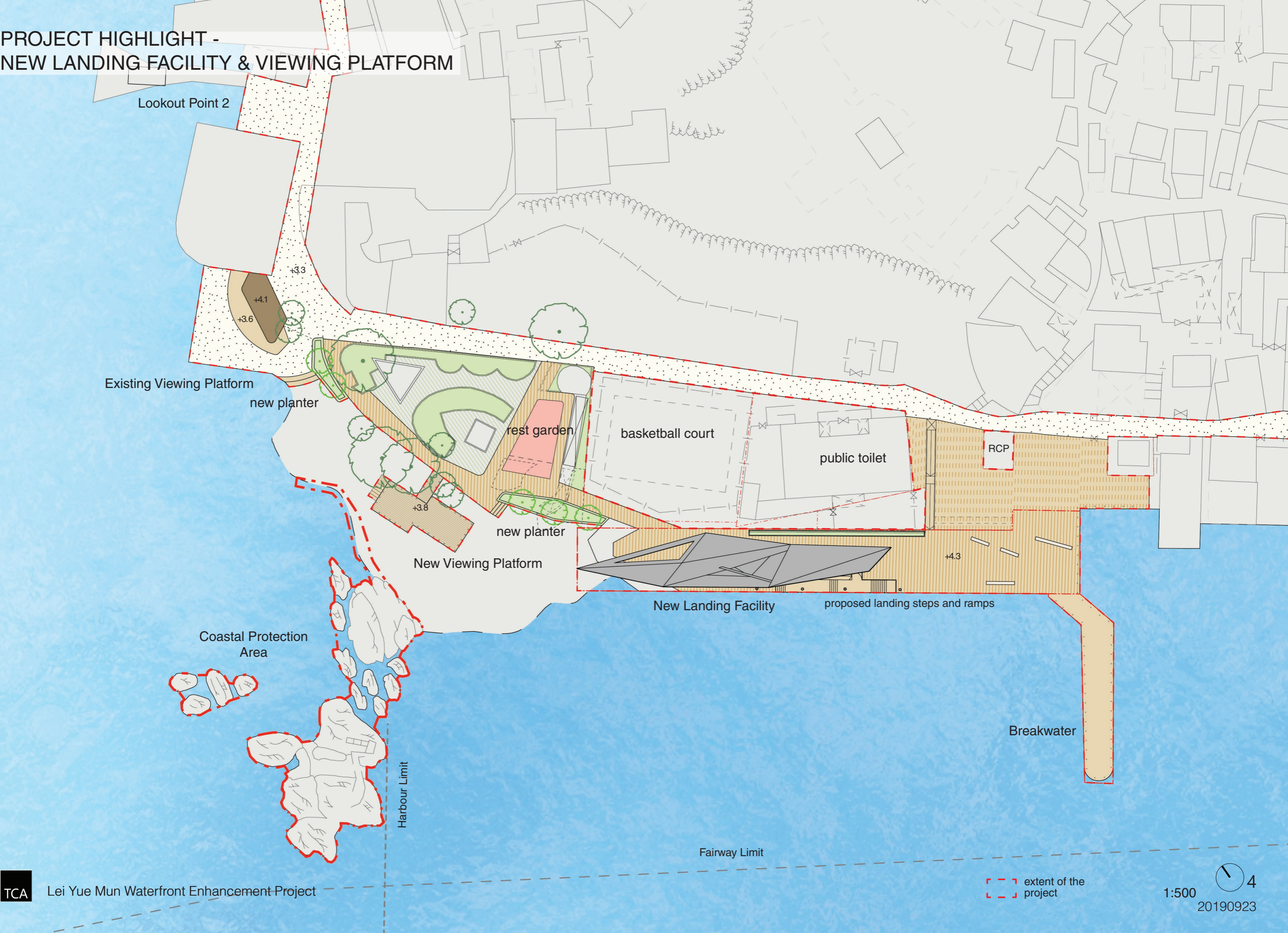
The project is to improve Lei Yue Mun waterfront to serve as a key tourist attraction. The project scope includes the following:

- (i) construction of a new viewing platform and a cover for the new landing facility;
- (ii) a new landing facility and open space to be constructed by CEDD , and beautification works for the new promenade, the existing five lookout points and the existing viewing platform; and
- (iii) streetscape improvement works
- (iv) improvement of existing rest garden

The site area is approximately 5,300m²



PROJECT HIGHLIGHT -
NEW LANDING FACILITY & VIEWING PLATFORM





CONCEPTUAL MODEL

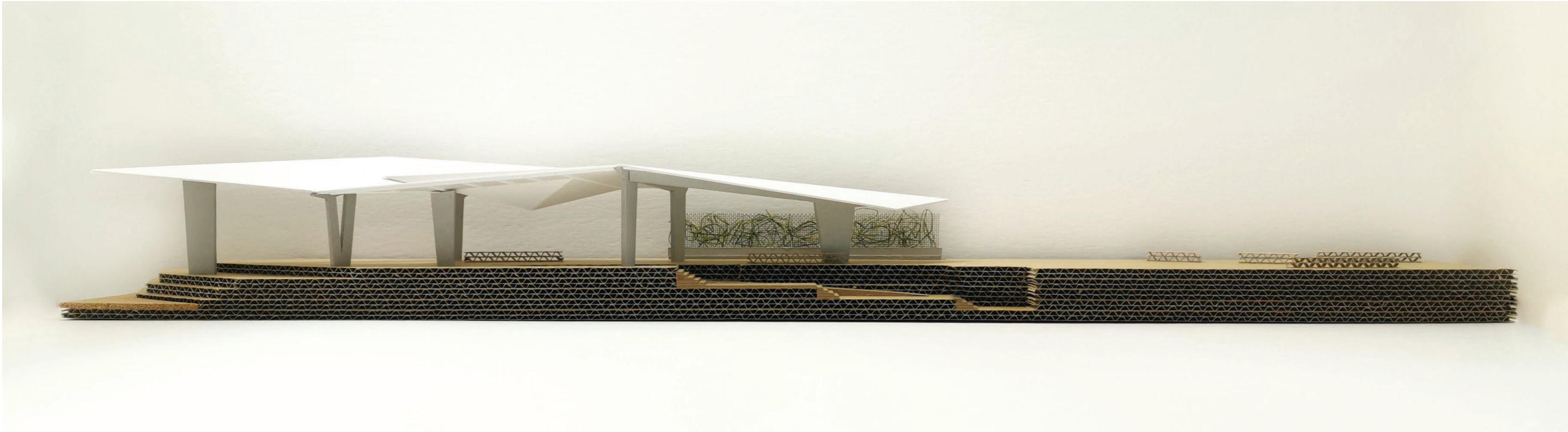
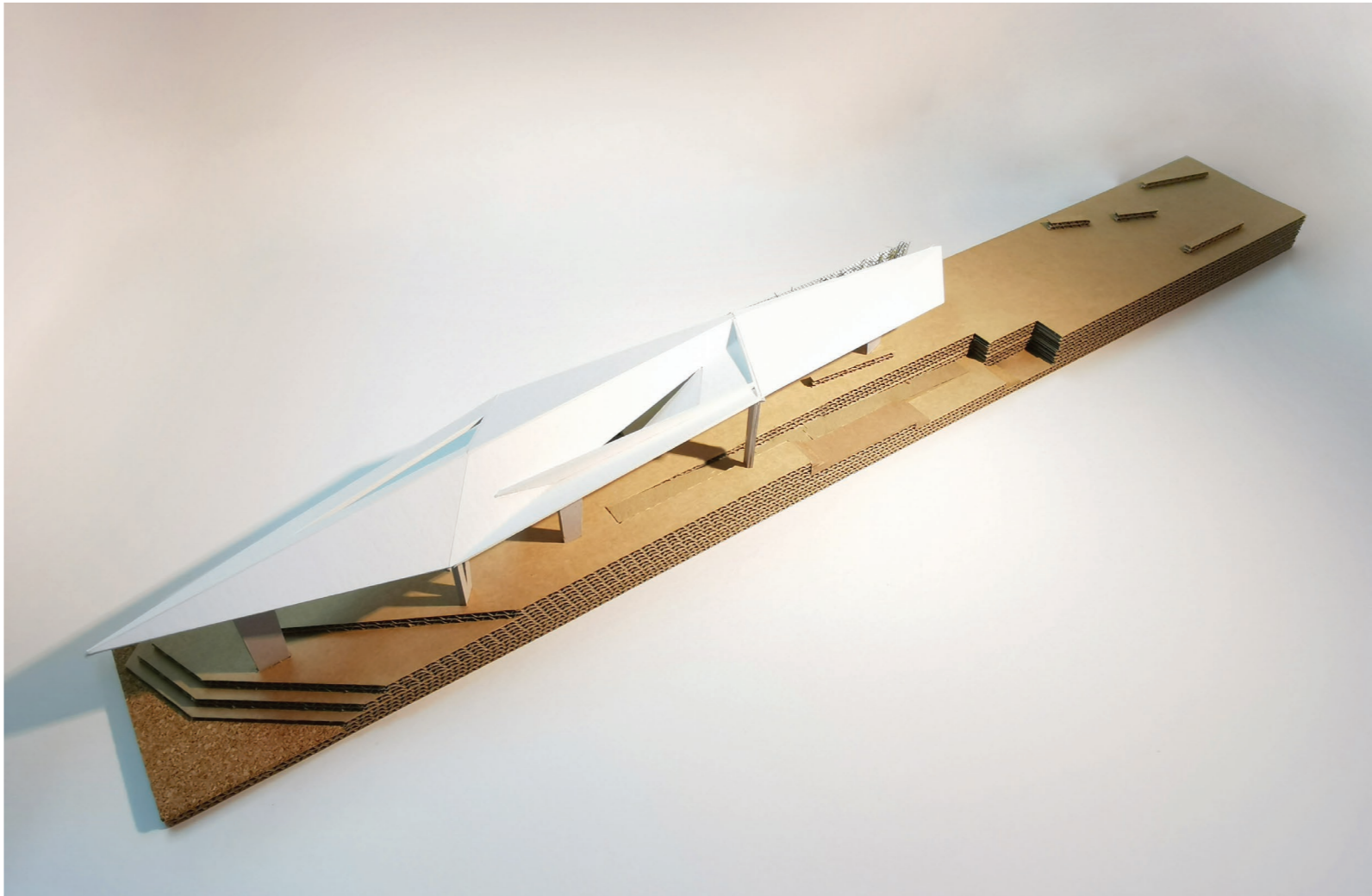
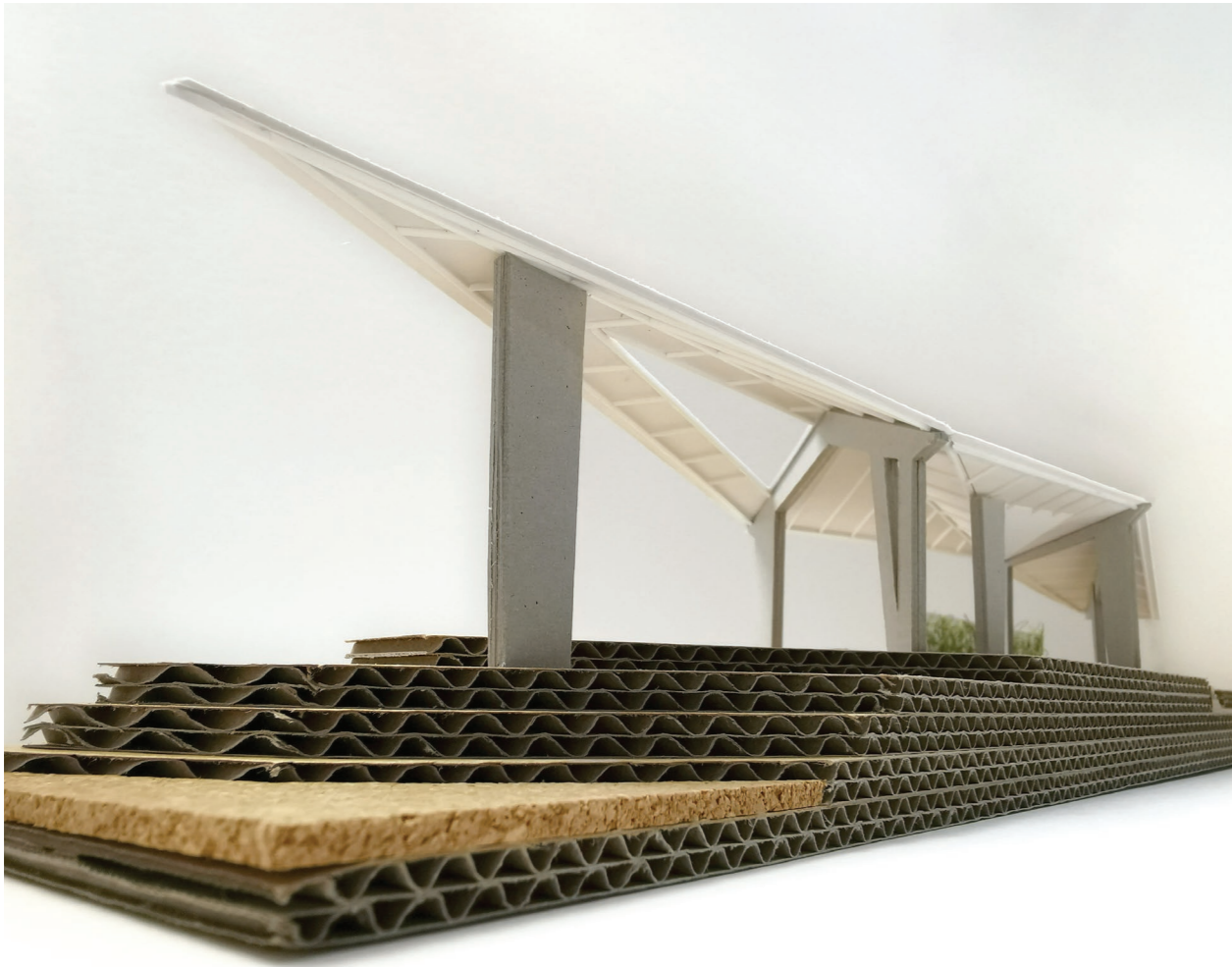


CONCEPTUAL MODEL



NEW LANDING FACILITY

NEW LANDING FACILITY - CONCEPTUAL MODEL

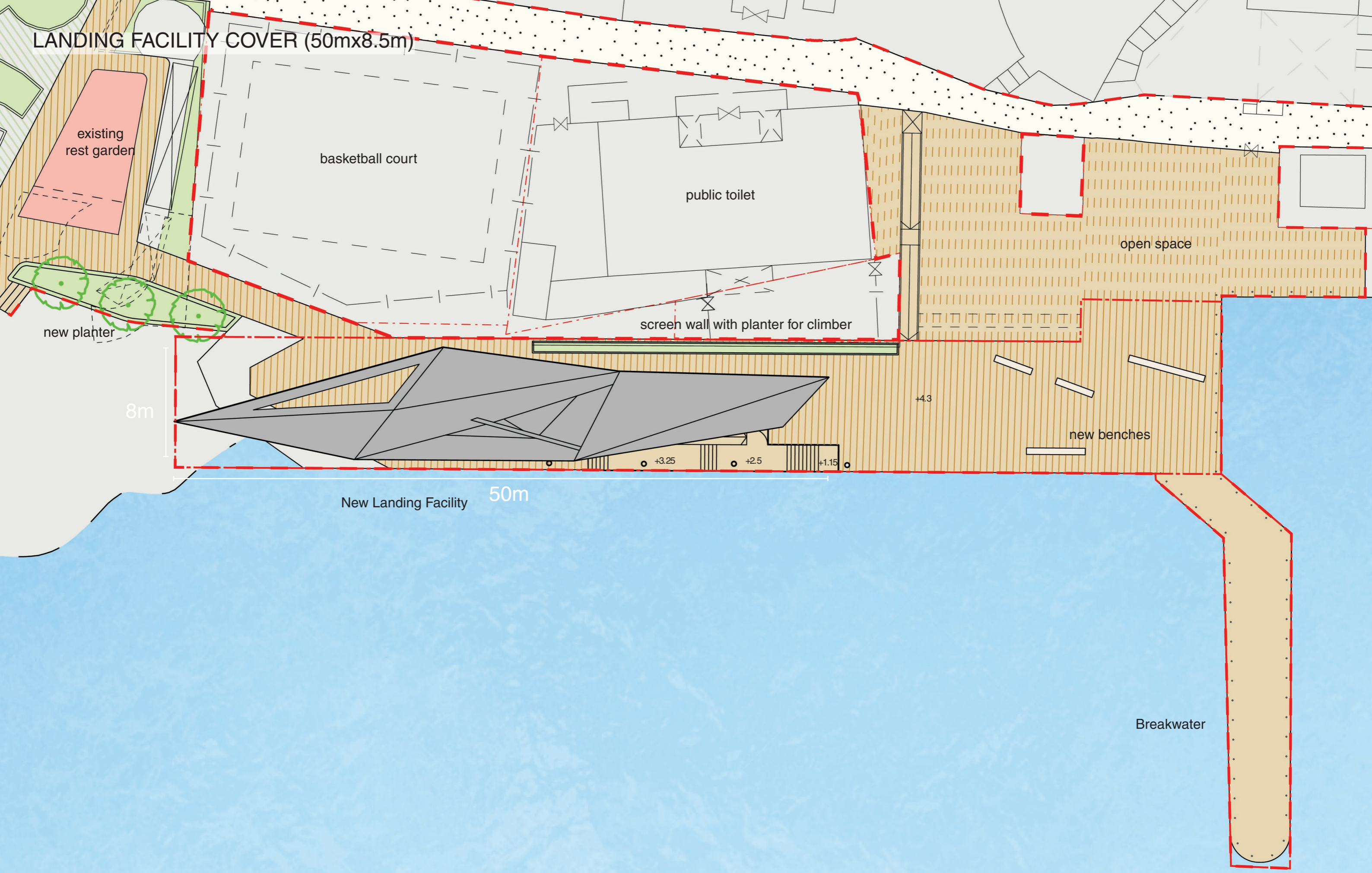


NEW LANDING FACILITY - CONCEPTUAL MODEL

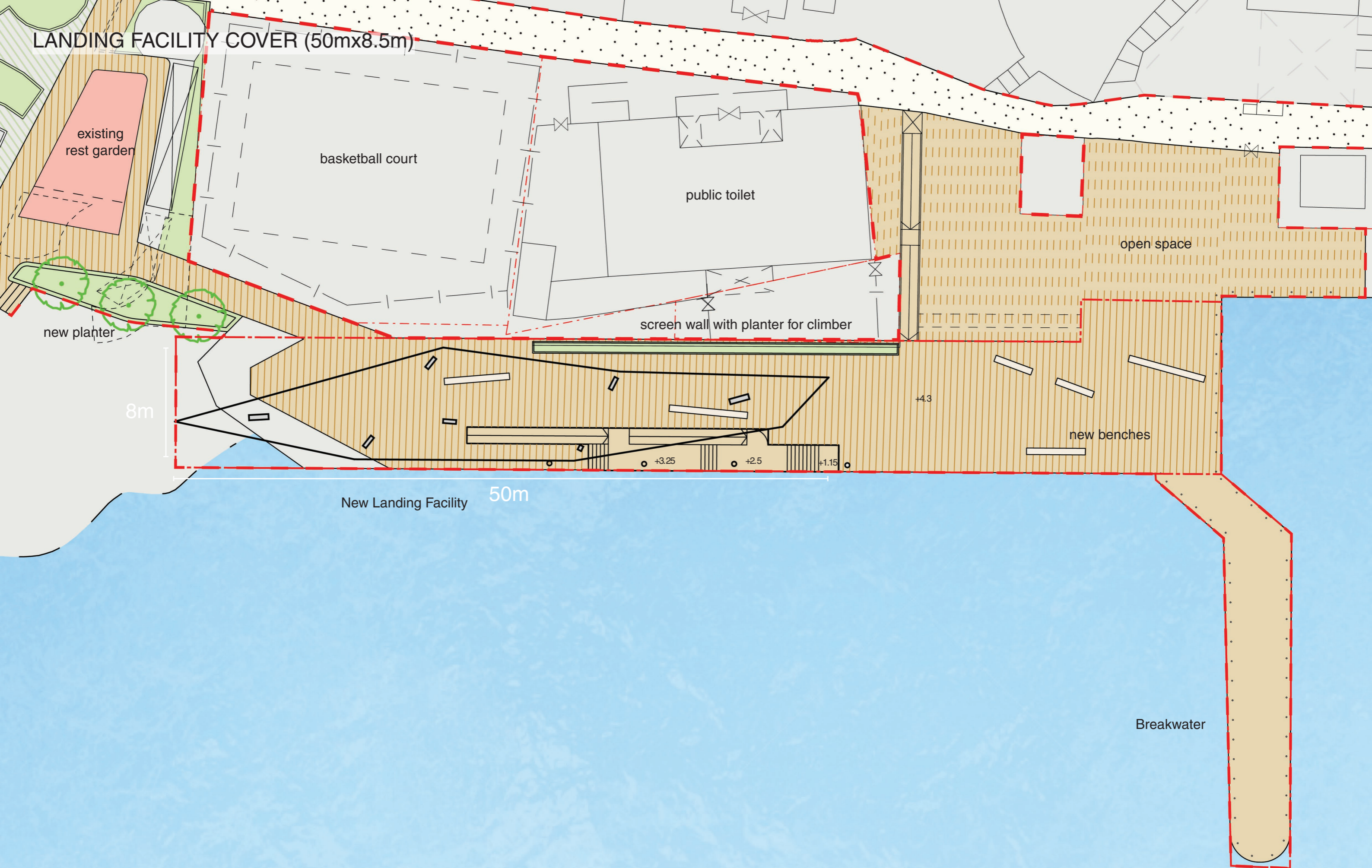


NEW LANDING FACILITY - CONCEPTUAL MODEL



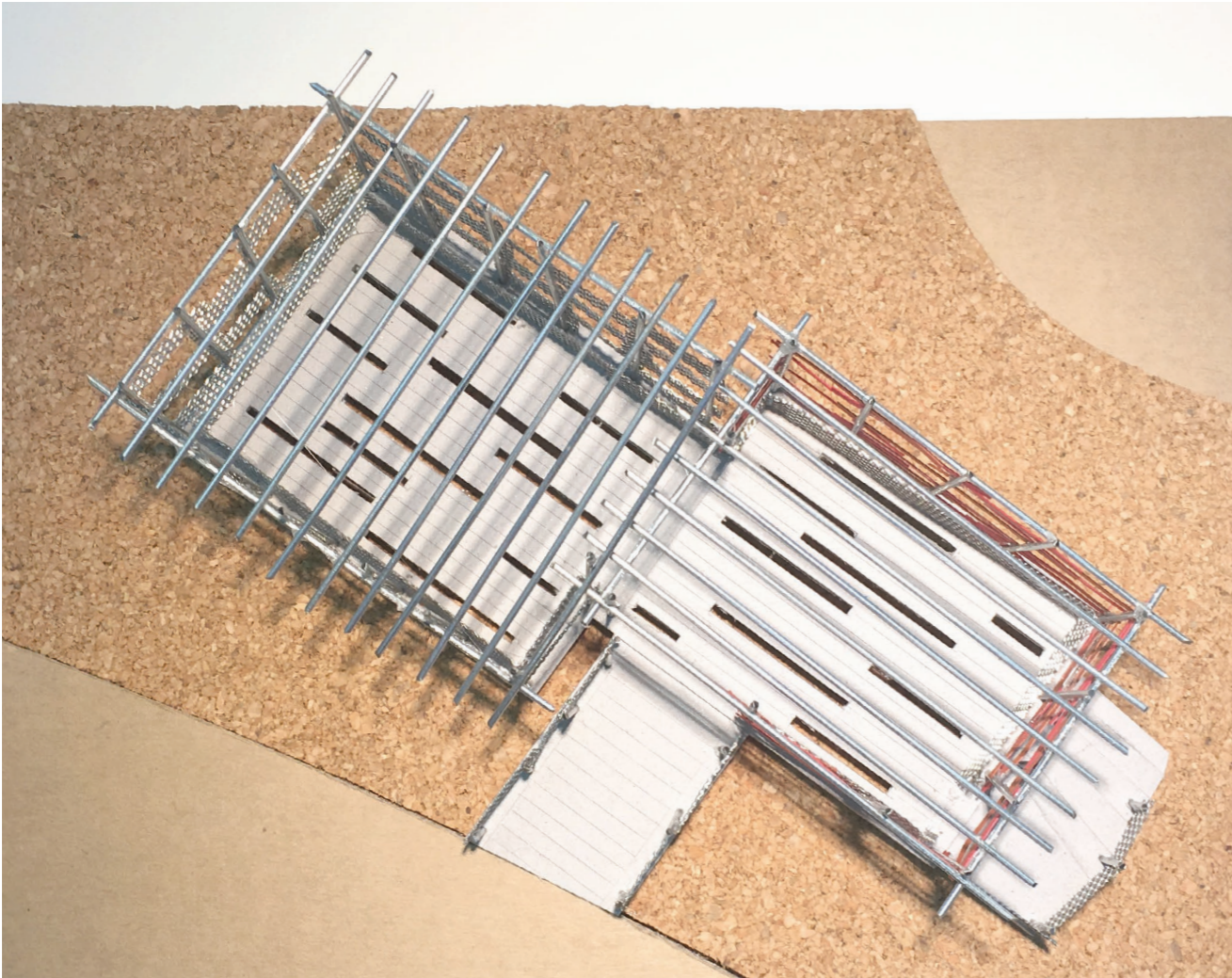


LANDING FACILITY COVER (50mx8.5m)

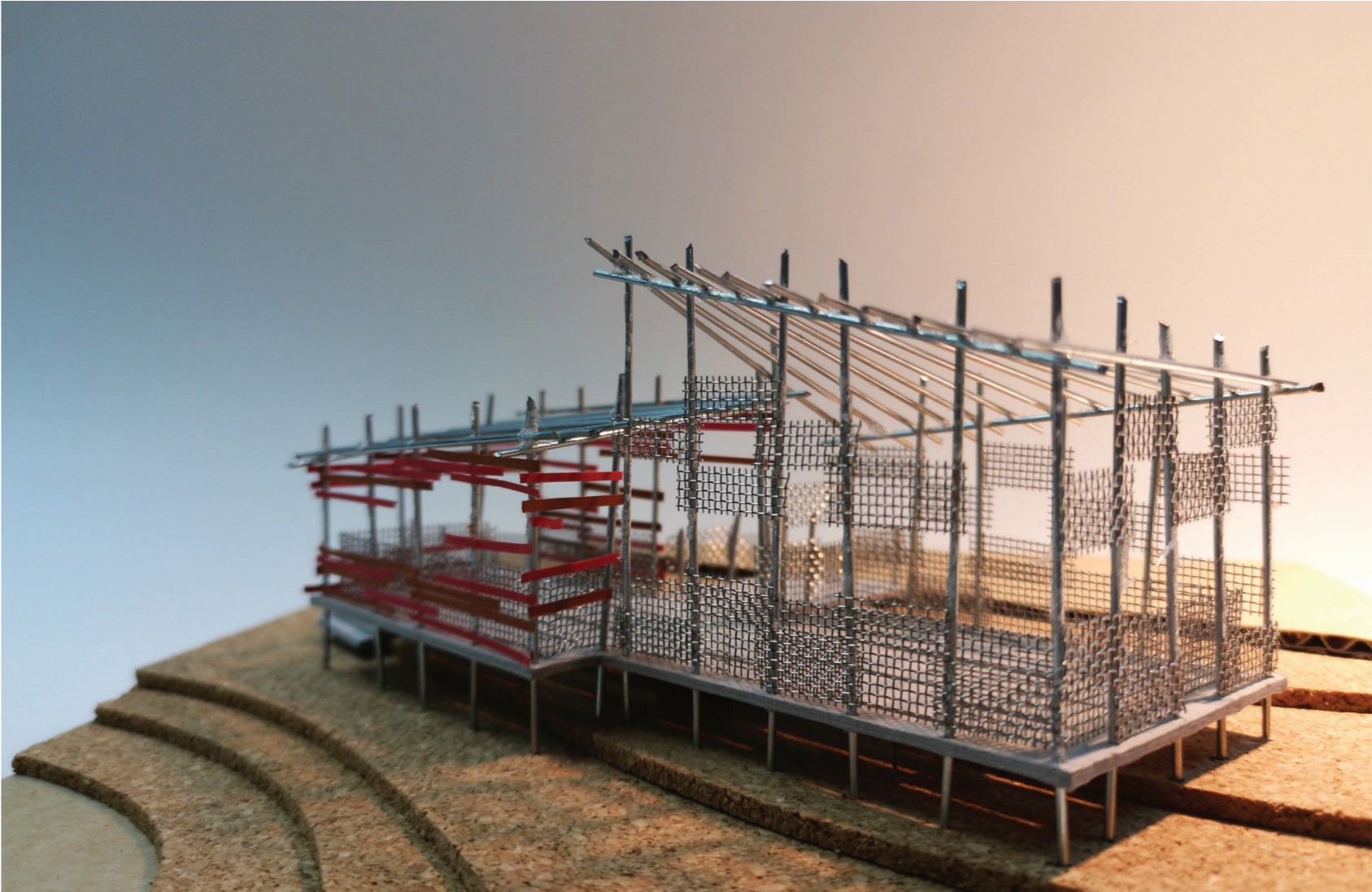
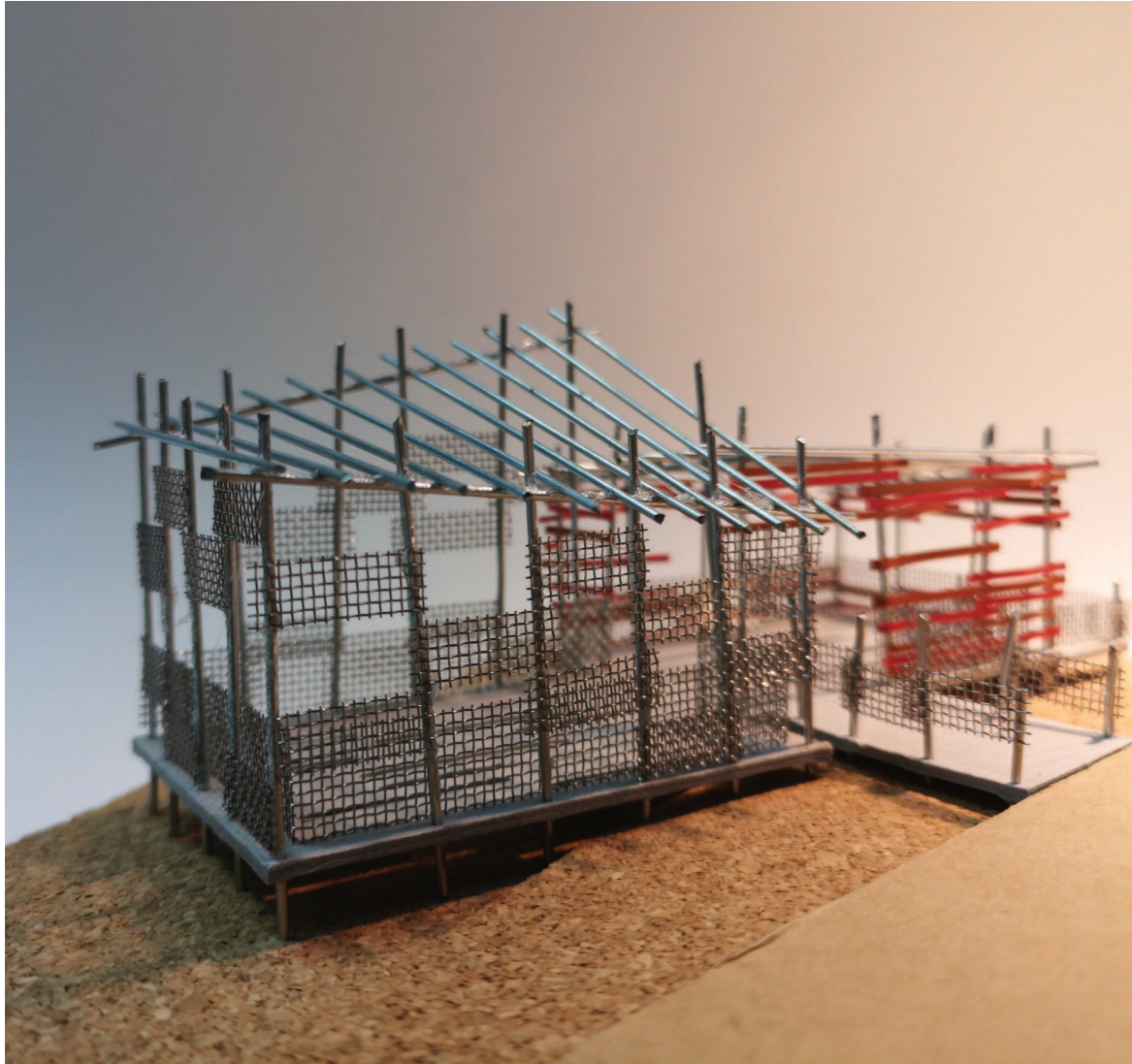


NEW VIEWING PLATFORM

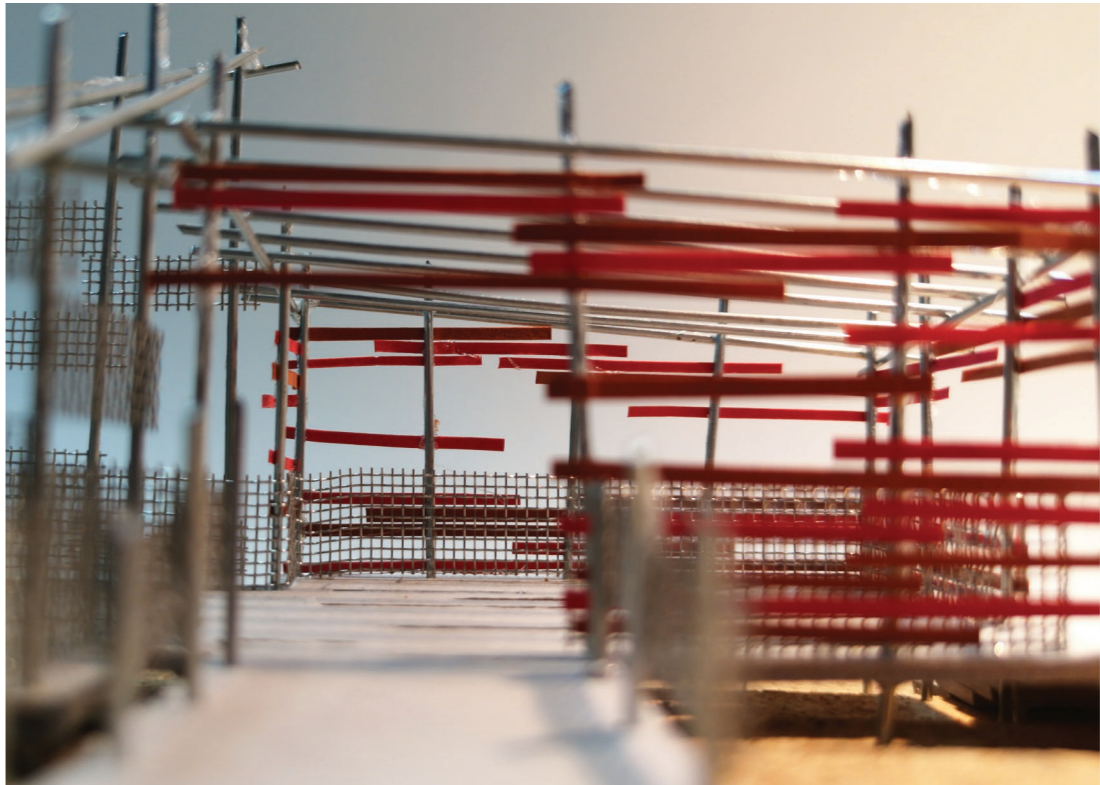
NEW VIEWING PLATFORM - CONCEPTUAL MODEL



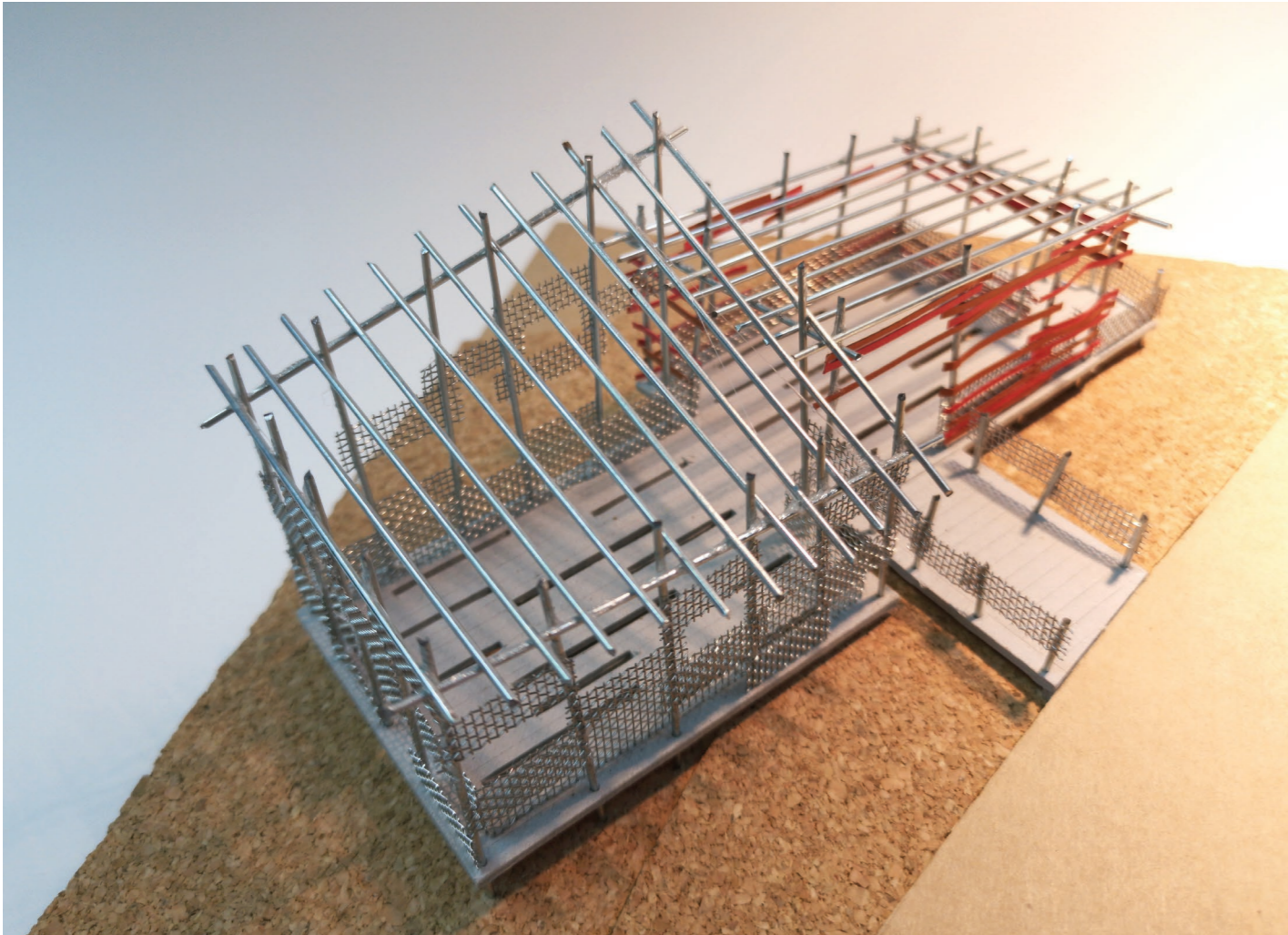
NEW VIEWING PLATFORM - CONCEPTUAL MODEL



NEW VIEWING PLATFORM - CONCEPTUAL MODEL



NEW VIEWING PLATFORM - CONCEPTUAL MODEL



THE BEACH

SECTION A-A'

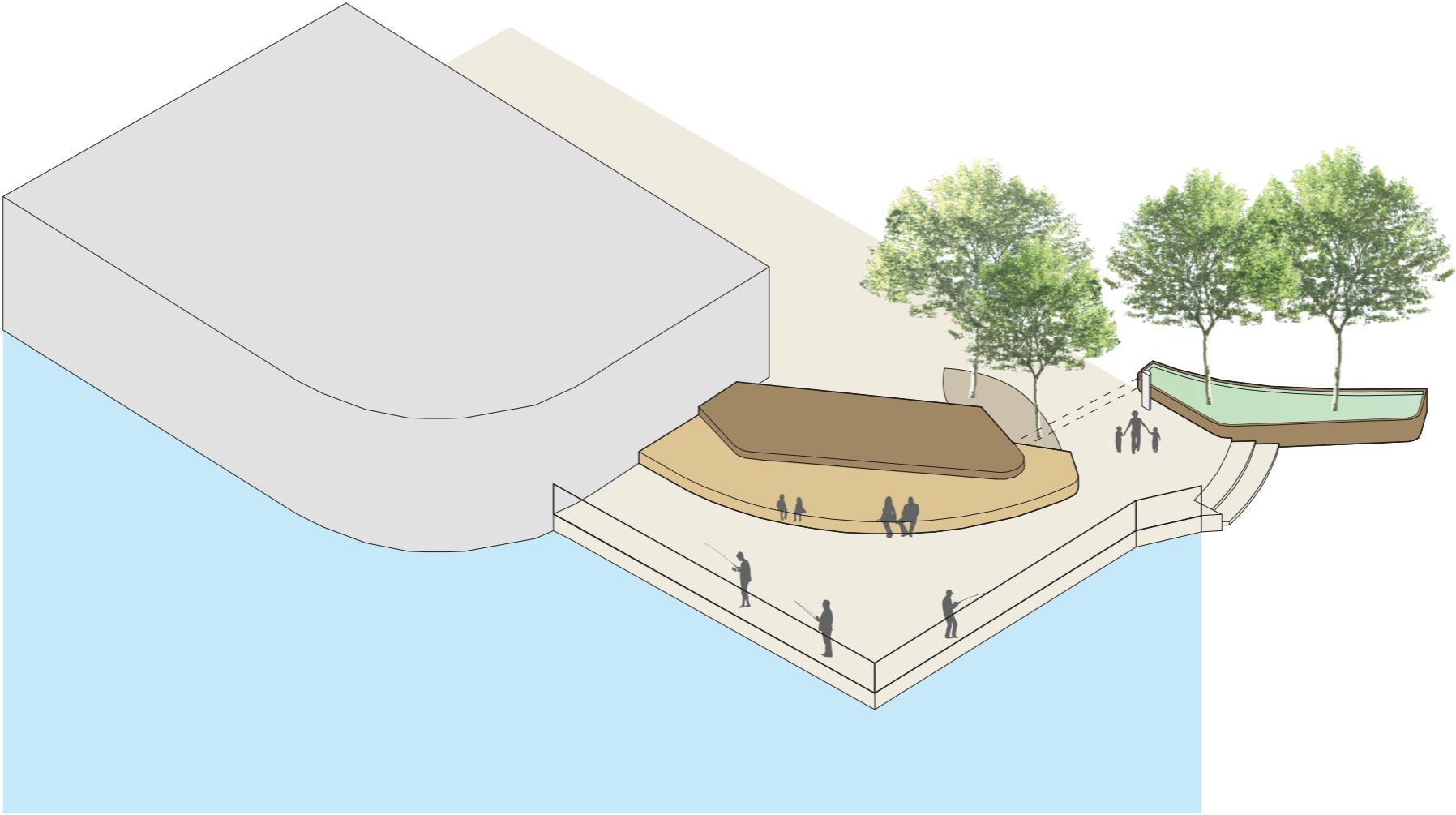


EXISTING VIEWING PLATFORM &
5 LOOKOUT POINTS

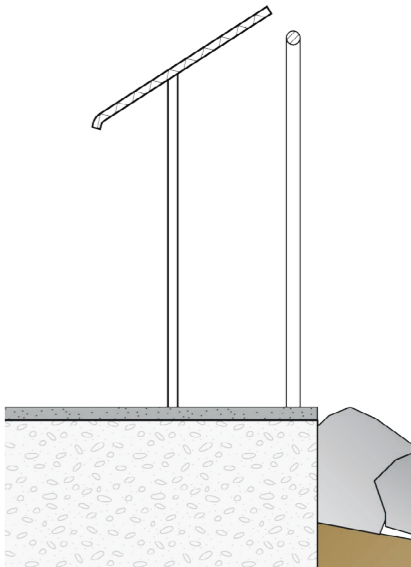
EXISTING VIEWING PLATFORM



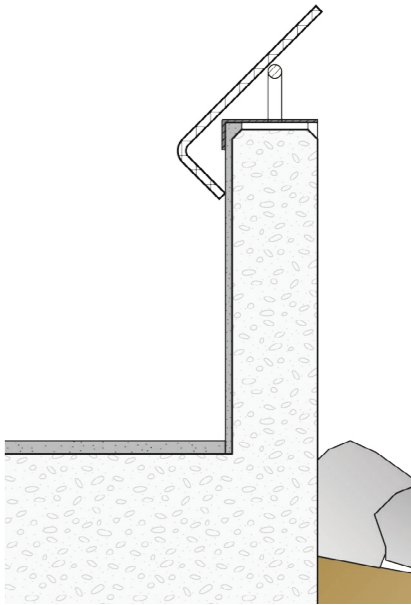
existing viewing platform(20190308)



INFORMATION PANEL



stand-alone information panel at
lookout point 2 and existing viewing
platform



information panel above existing
parapet at lookout point 1, 3 ,4, 5

LOOKOUT POINT 1

- Make good on existing concrete parapet with a metal cladding cover to avoid sharp edges
- New paving against ponding and uneven surface
- Information panel content: historical background of Lei Yue Mun



before



after



LOOKOUT POINT 2

- New paving against ponding and uneven surface
- Information panel content: fishing industry and seafood



before



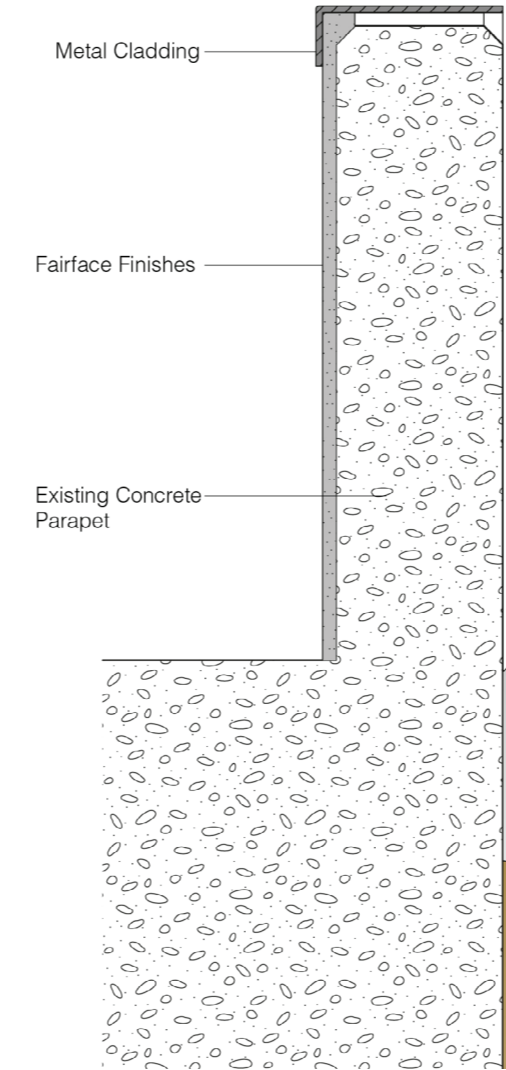
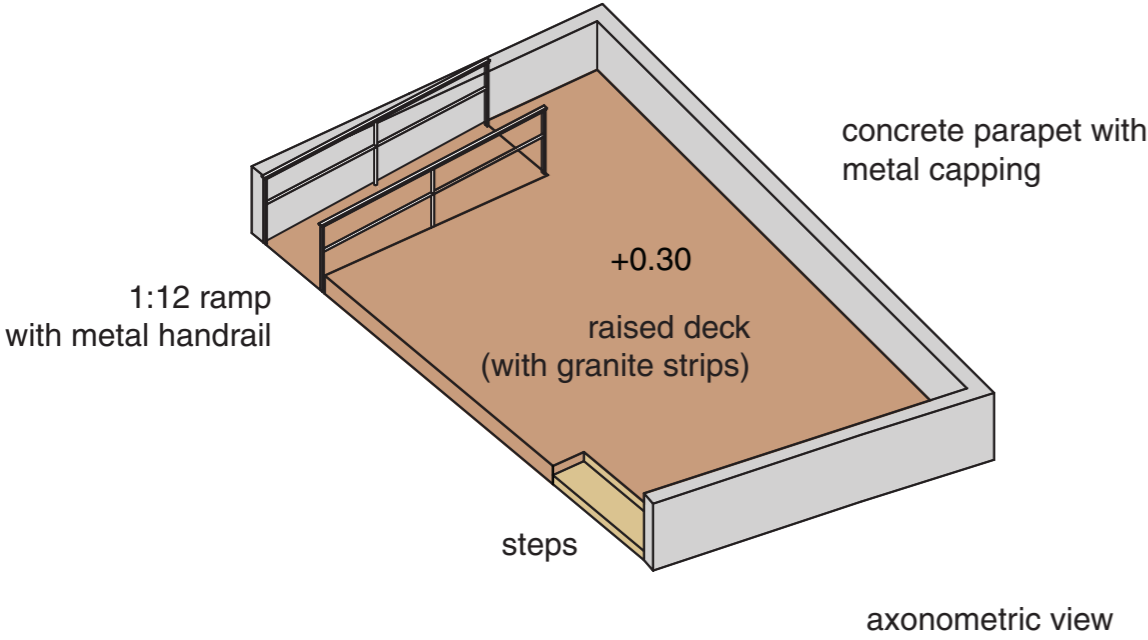
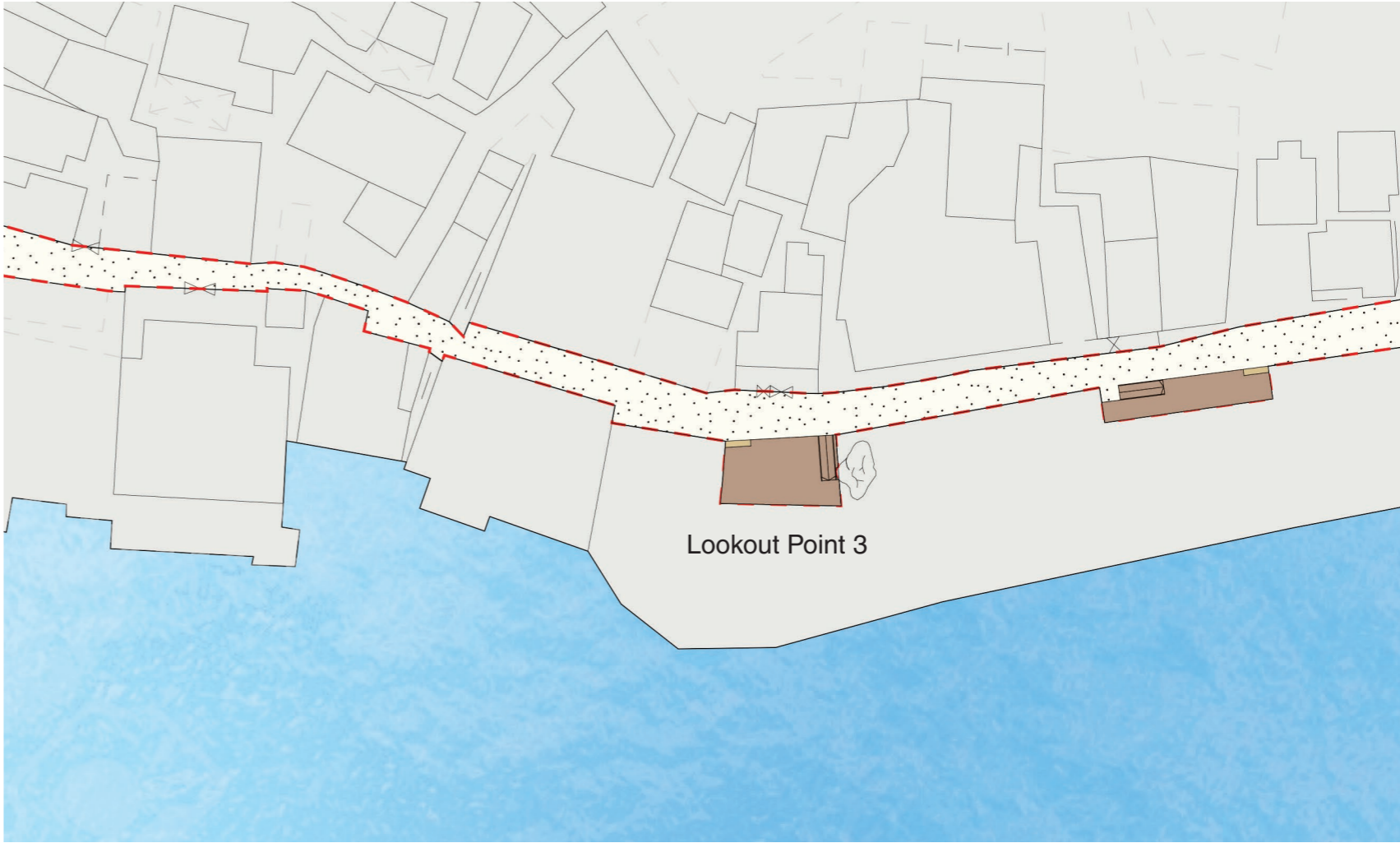
after



RAISED DECK AT LOOKOUT POINT 3



existing

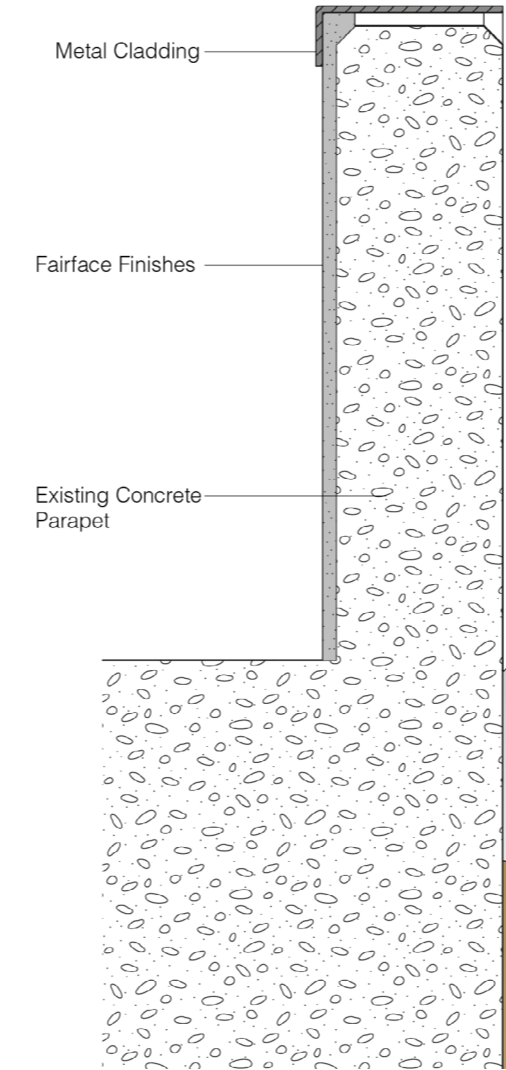
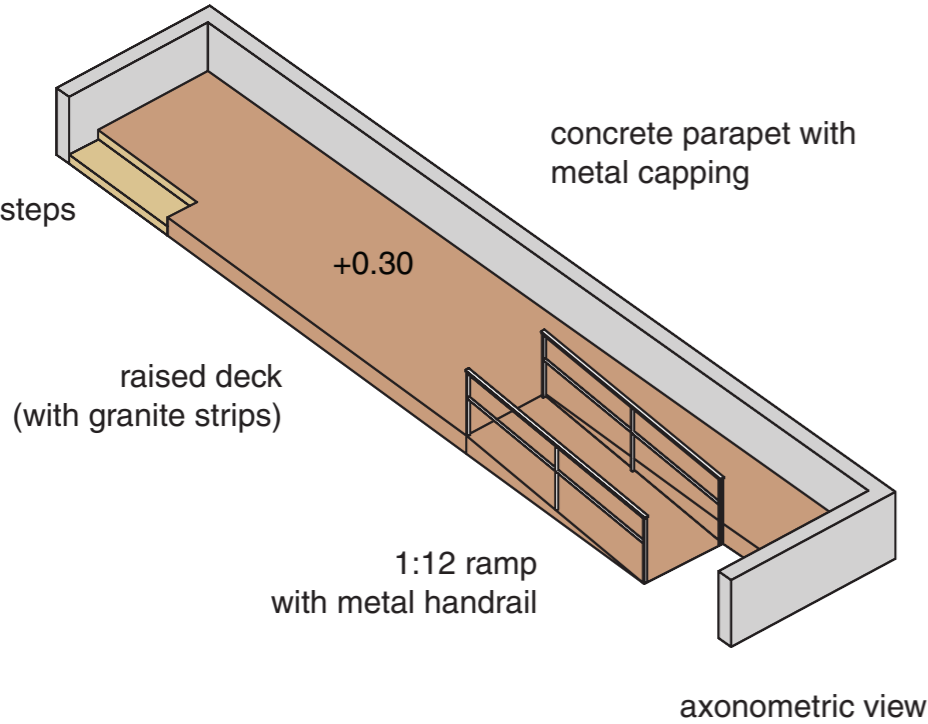


- Make good on existing concrete parapet with a metal cladding cover to avoid sharp edges
- Information panel content: navigation & cruises

RAISED DECK AT LOOKOUT POINT 4

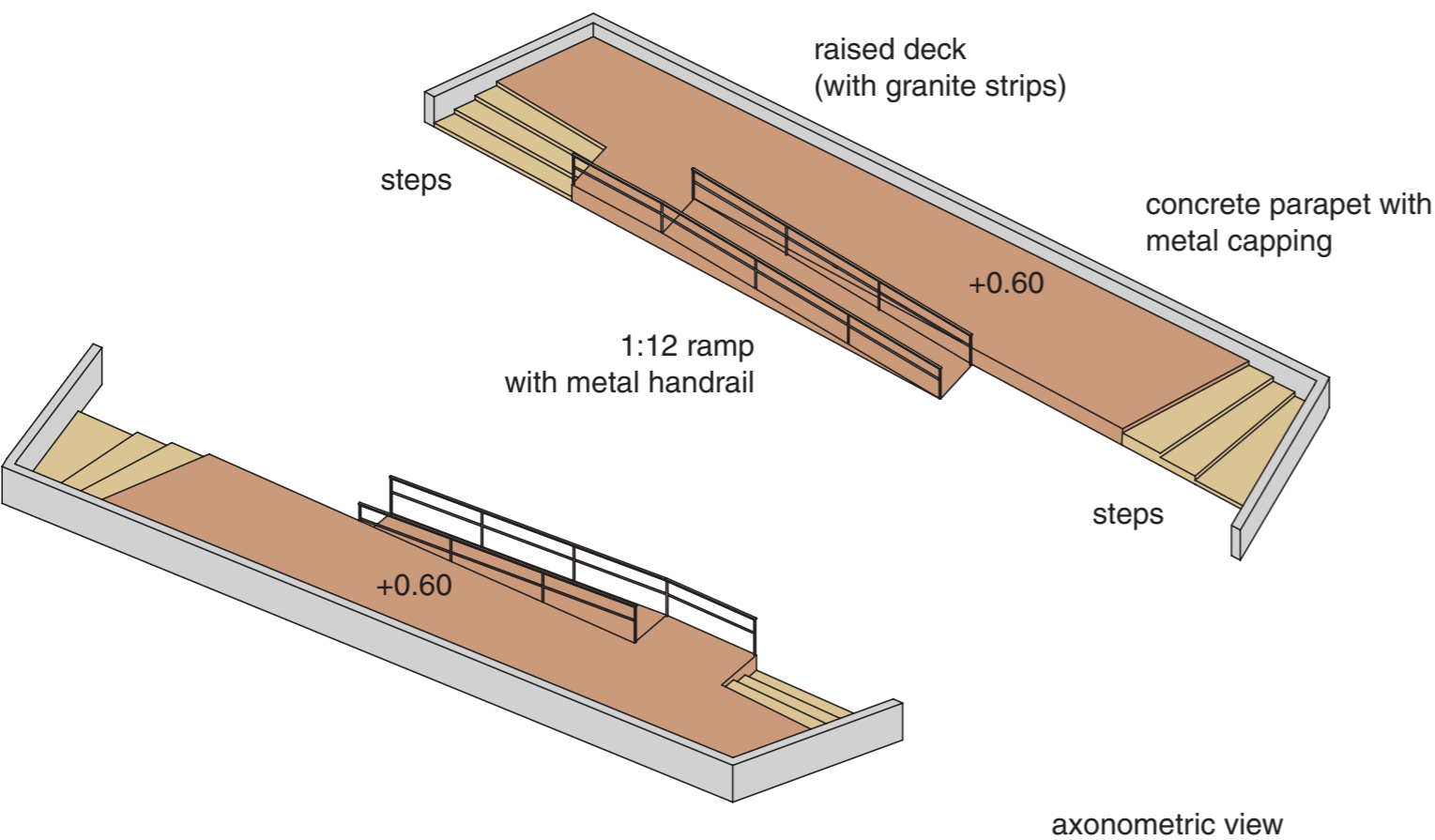


existing

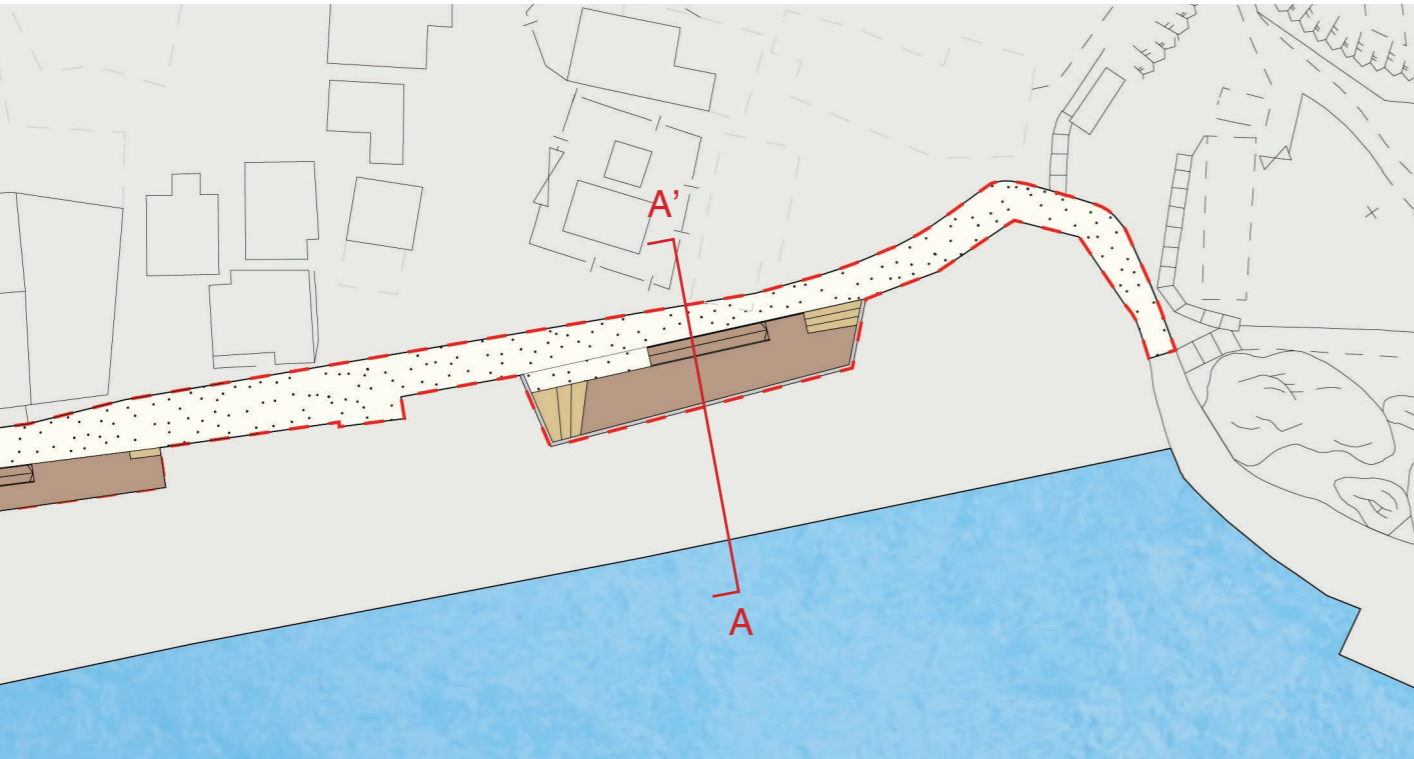


- Make good on existing concrete parapet with a metal cladding cover to avoid sharp edges
- Information panel content: quarrying industry

RAISED DECK AT LOOKOUT POINT 5



-Information panel content: Tin Hau Temple



Lookout point 5 (20190308)

