

AGENDA ITEM 5:

PROGRESS UPDATE ON THE WEST KOWLOON CULTURAL DISTRICT

**Task Force on Harbourfront Developments in Kowloon,
Tsuen Wan and Kwai Tsing**

16 May 2018

Purpose

Update members on development progress of WKCD and efforts made on connectivity improvement.



Progress of key development initiatives

Xiqu Centre



- Built for Cantonese opera and other genres of xiqu (Chinese traditional theatre) performances.
- Occupation Permit issued in April 2018.
- Next stage to complete the fit-out of works in third quarter of 2018 for pre-opening preparation.
- Planned opening in 4th quarter of 2018.

Progress of key development initiatives

Artist Square Development Area (ASDA)



Progress of key development initiatives

M+



- M+ is a new museum for visual art in Hong Kong.
- Podium and tower under construction.
- Scheduled for completion in late 2019.

Progress of key development initiatives

Zone 3B & Lyric Theatre Complex

- First main works contract for the Integrated Basement of Zone 3B awarded on 8 January 2018 and excavation & lateral supports works commenced.
- Temporary barging facilities for soil disposal during the construction will be provided.
- Second main works contract of the topside Lyric Theatre Complex, including development of the Artist Square, tendered out in March 2018 with target completion in around 2022.



Progress of key development initiatives

Artist Hostel/Residence

- Hong Kong's first experimental Artists' Hostel/Residence.
- To serve as a showcase and incubator for artists, with workshops and public spaces for events and performances.
- To accommodate both artists and regular patrons, providing a unique opportunity for artists and art lovers to meet, interact and learn from each other.
- To be developed through a public-private partnership (PPP).



Progress of key development initiatives

Artist Hostel/Residence

Tentative Development Programme

PPP development tender issuance	2nd half of 2018
Tender award	Early 2019
Commencement of construction	End 2019
Completion	End 2023

Progress of key development initiatives

Art Park

- Phase 1 completed and opened for public enjoyment in early April 2018.
- Phase 2 including the Freespace (including a black box theatre and an outdoor stage) anticipated to open in 2019.
- Phase 3, including the area above the interfacing carpark adjacent to M+, under construction for completion beyond 2018.



Progress of key development initiatives

Hong Kong Palace Museum (HKPM)

- After signing of Collaborative Agreement with Palace Museum and approval of donation by The Hong Kong Jockey Club Charities Trust in June 2017, WKCD awarded the foundation works of the HKPM in February 2018 with piling works commenced in April 2018.



Progress of key development initiatives

Art, Commerce and Exhibitions (ACE)

- ACE = Art, Commerce, Exhibitions.
- To be developed under a Build-Operate-Transfer (BOT) arrangement to capture creative opportunities in design, construction and management.
- Address a growing demand for space from art fairs, exhibitions and conventions.
- Flexible configuration to serve multi-purposes including staging various types of performances with seating capacity of around 10,000 in concert mode.



Progress of key development initiatives

Art, Commerce and Exhibitions (ACE)

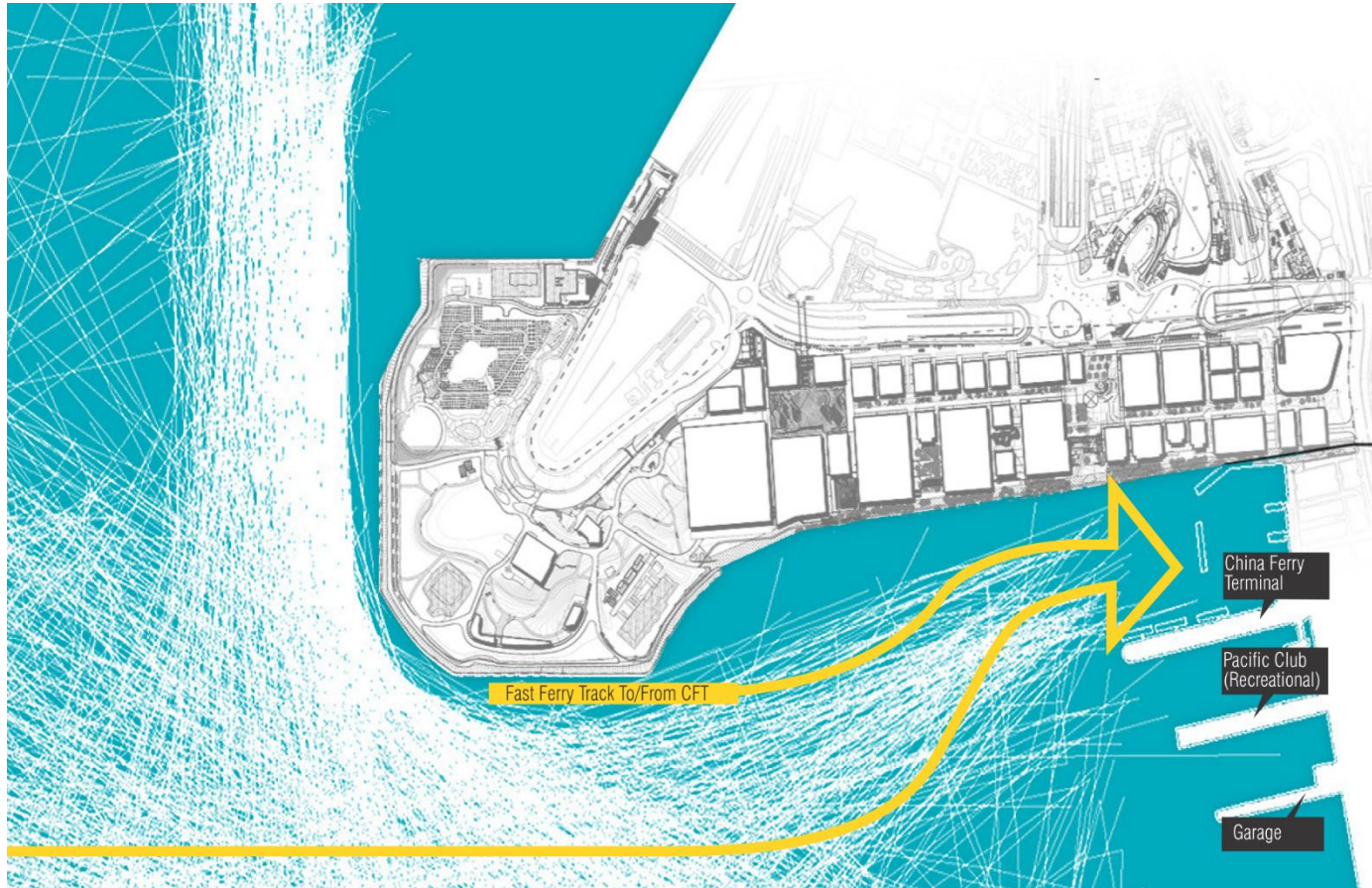
Tentative Development Programme

BOT development tender issuance	End 2018 / Early 2019
Tender award	Early 2019
Commencement of construction	End 2019 / Early 2020
Completion	2023 / 2024

Progress of key development initiatives

Study on Proposed Marine Access Points

Existing Marine Traffic Condition



Progress of key development initiatives

Study on Proposed Marine Access Points

Proposed Northern Marine Access Point

Existing Landing Steps

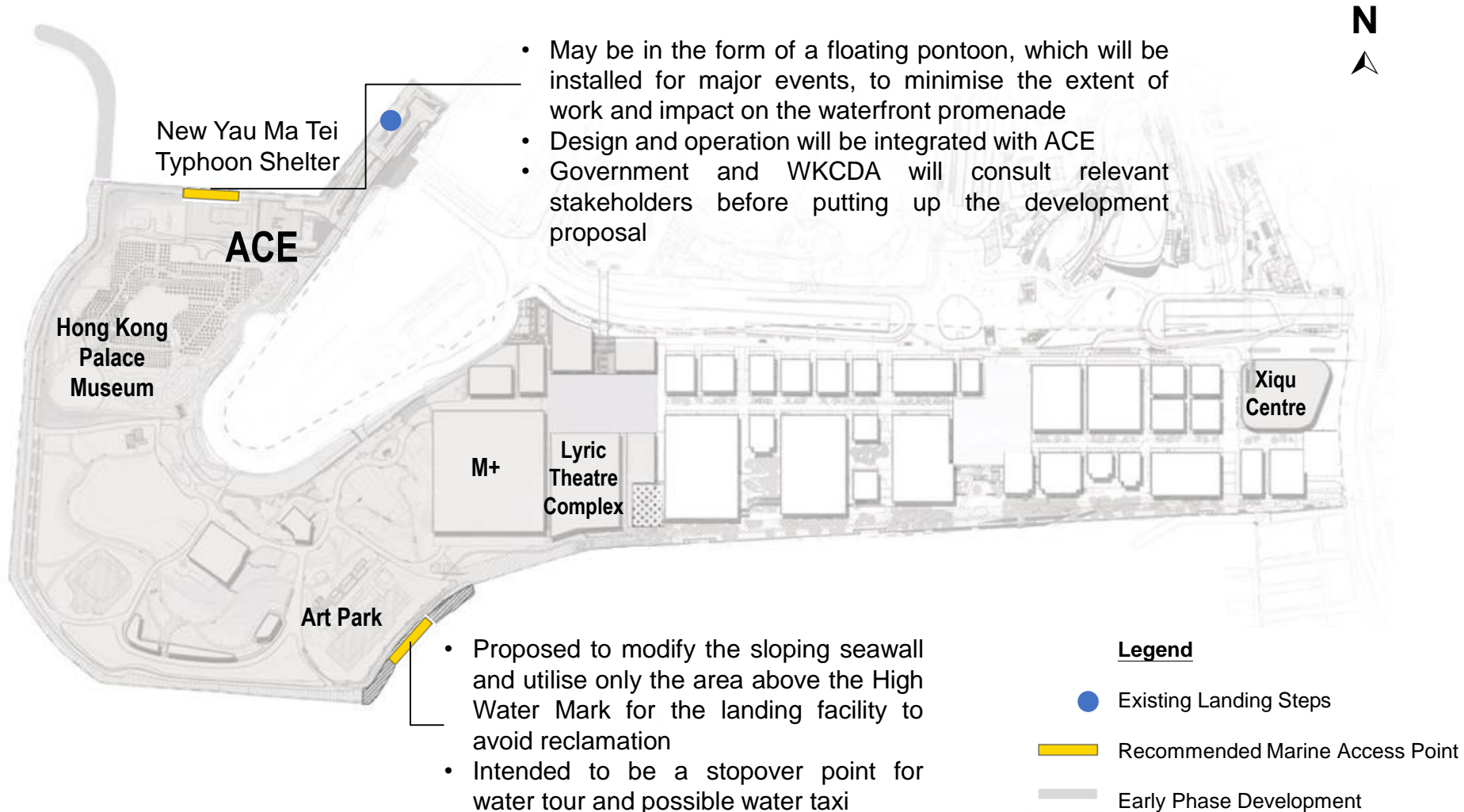
Proposed Southern Marine Access Point



Progress of key development initiatives

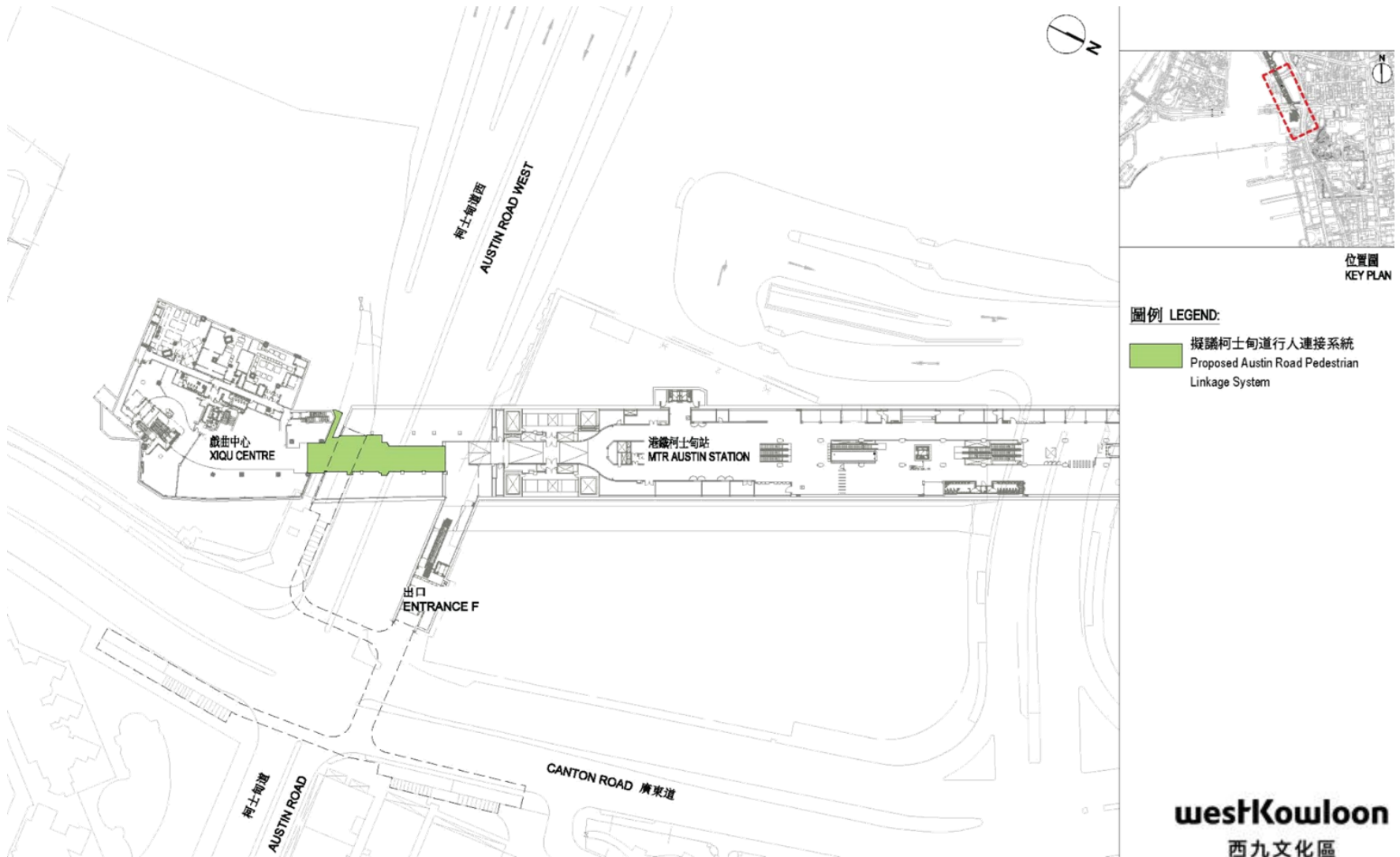
Study on Proposed Marine Access Points

- Subject to the recommendations of the feasibility study on the assumption that both will not trigger the test on overriding public need under the Protection of the Harbour Ordinance



Progress of key development initiatives

Austin Road Pedestrian Linkage System (APLS)



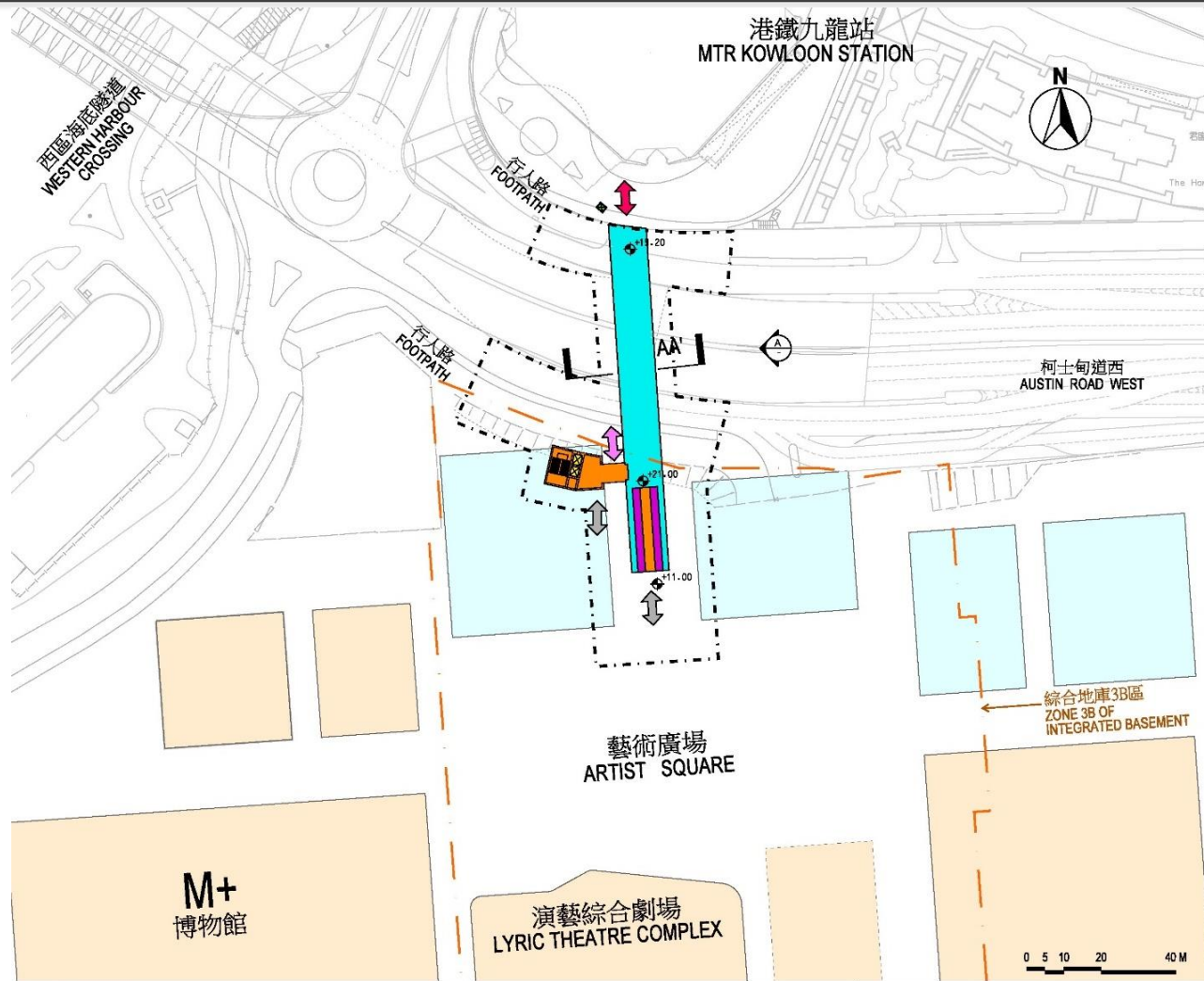
Progress of key development initiatives

Austin Road Pedestrian Linkage System (APLS)

- To address the future pedestrian forecast demand and enhance connectivity, a new pedestrian linkage system will be provided across Austin Road West, linking the MTR Austin Station with the basement of Xiqu Centre.
- After the Finance Committee of Legislative Council's approval of the funding application on 27 April 2018, works will be commenced soon.
- Beautification works for the existing pedestrian subway across the junction of Austin Road West and Canton Road are anticipated to be completed in phases from the first quarter of 2019.

Progress of key development initiatives

Artist Square Bridge (ASB)



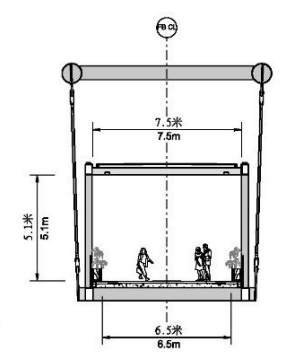
附件1 (頁1/2)
ENCLOSURE 1 (PAGE 1 OF 2)

圖例 LEGEND :

- 施工區界限
LIMIT OF WORKS AREA
- 酒店、辦公室及住宅發展項目
HOTEL, OFFICE AND RESIDENTIAL DEVELOPMENTS
- 西九管理層設施
WKCA'S FACILITIES
- 擬建有蓋行人天橋
PROPOSED COVERED FOOTBRIDGE
- 擬建有蓋自動扶梯
PROPOSED COVERED ESCALATORS
- 擬建有蓋樓梯
PROPOSED COVERED STAIRCASE
- 擬建升降機
PROPOSED LIFT
- 擬建水平(約數)
PROPOSED LEVEL (APPROXIMATE)
- 現有發展項目連接
CONNECTION TO THE EXISTING DEVELOPMENT
- 現有行人路連接
CONNECTION TO THE EXISTING FOOTPATH
- 將來發展項目連接
CONNECTIONS TO THE FUTURE DEVELOPMENT

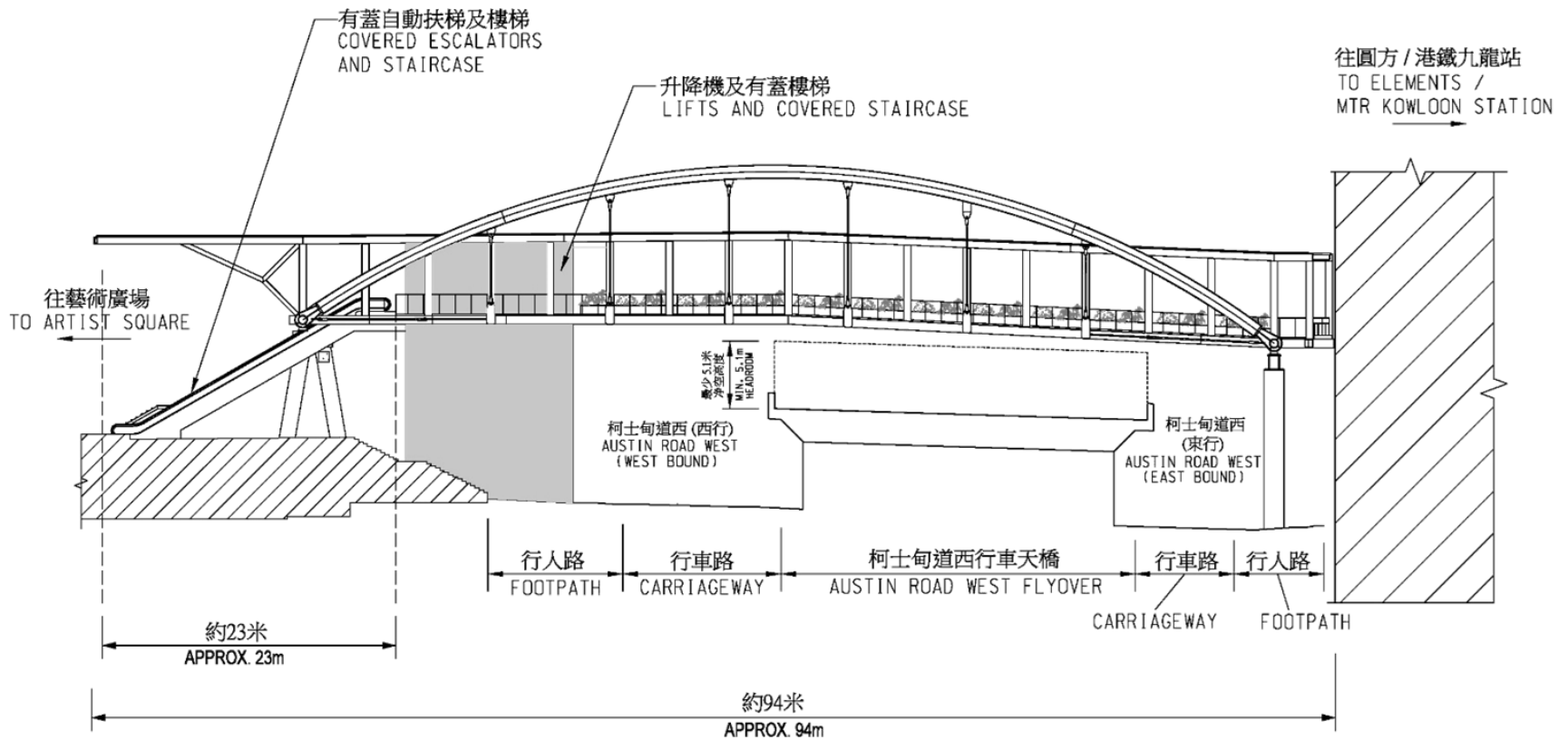
鄰近發展項目提供的現有2.4小時開放無障礙設施
EXISTING ROUND-THE-CLOCK BARRIER-FREE FACILITY PROVIDED BY ADJOINING DEVELOPMENT

鄰近發展項目提供的現有升降機
EXISTING LIFT PROVIDED BY ADJOINING DEVELOPMENT



Progress of key development initiatives

Artist Square Bridge (ASB)



視角 A
VIEW A

Progress of key development initiatives

Artist Square Bridge (ASB)



Progress of key development initiatives

Artist Square Bridge (ASB)

- Funding proposal for the original design of the ASB was discussed at the Joint Subcommittee to Monitor the Implementation of the West Kowloon Cultural District Project of Legislative Council on 21 April 2017. The Joint Subcommittee expressed concerns about the design and estimated cost of the proposed ASB and did not support submission of the funding proposal to the Public Works Subcommittee.
- The Government and WKCDA have subsequently revisited the ASB design with an aim to reduce the construction cost.
- A new design adopting an arch structure (with ‘Vierendeel’ truss) was discussed at the Joint Subcommittee meeting on 11 May 2018. Members generally supported to submit it to PWSC for consideration.

Advice Sought

Members to note:

- Development progress of WKCD; and
- Connectivity improvement efforts involved.

Thank you