

AGENDA ITEM 4:

PROGRESS UPDATE ON THE WEST KOWLOON CULTURAL DISTRICT

**Task Force on Harbourfront Developments in Kowloon,
Tsuen Wan and Kwai Tsing**

10 November 2017

Purpose

Update members on development progress of WKCD and efforts made on connectivity improvement.



Progress of key development initiatives

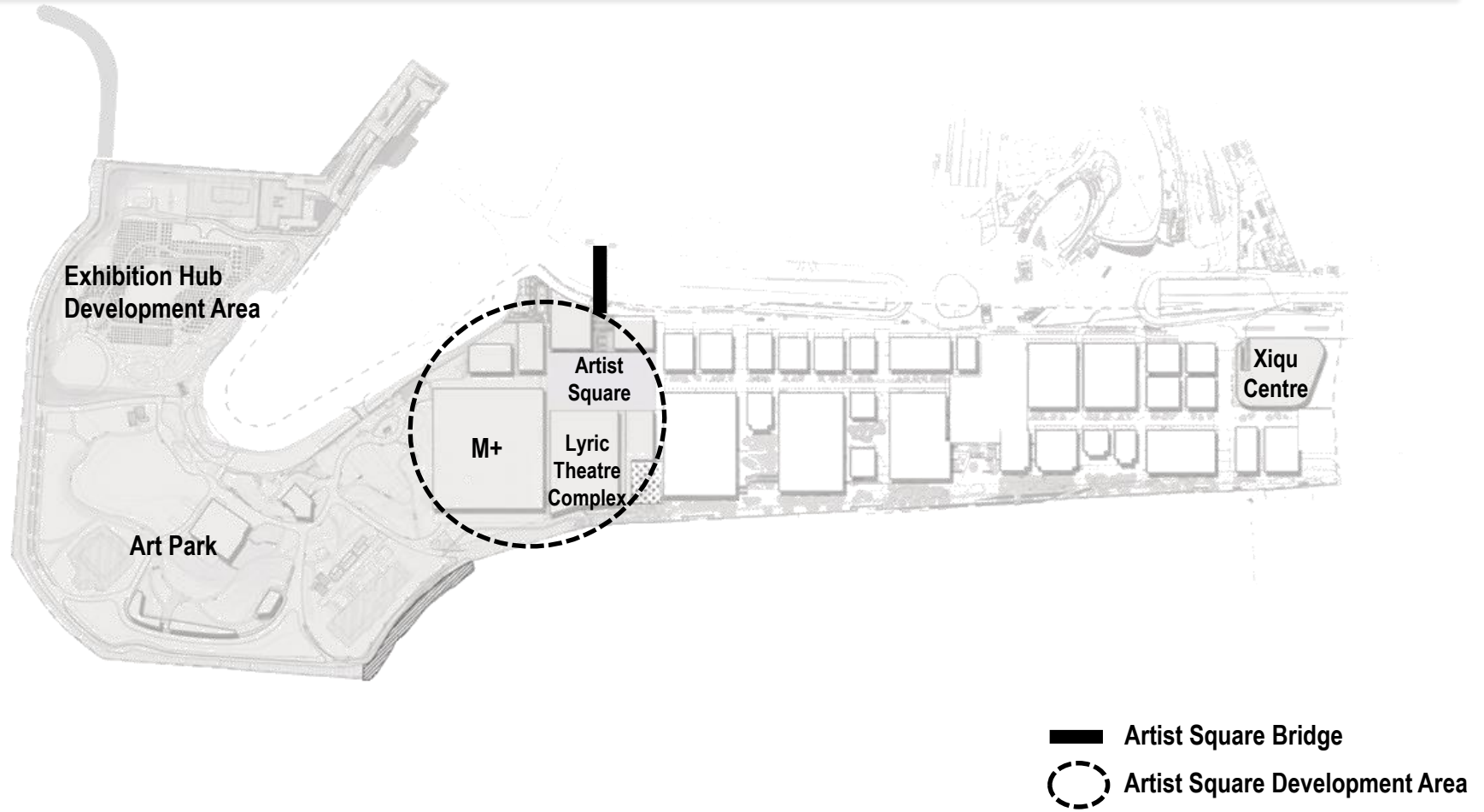
Xiqu Centre



- Built for xiqu (Chinese opera) performances.
- Building structure substantially completed.
- Façade in the final stage of installation.
- Planned opening in the 4th quarter of 2018.

Progress of key development initiatives

Artist Square Development Area



Progress of key development initiatives

Artist Square Development Area

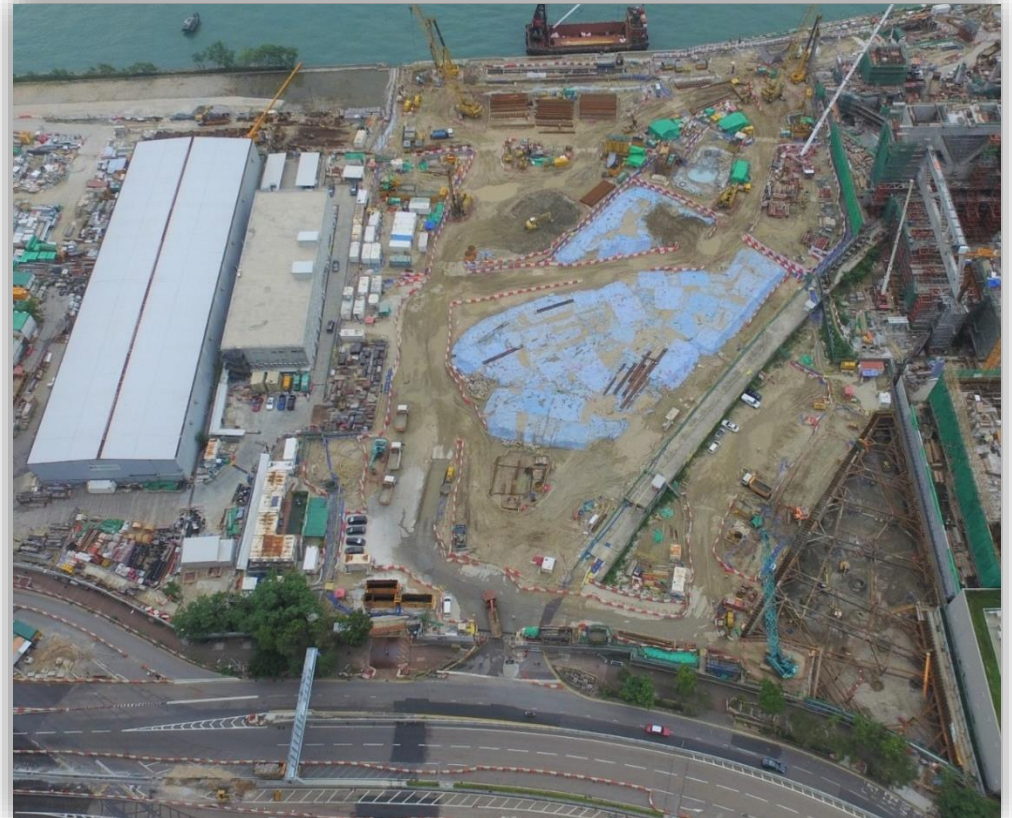


- M+ is a new museum for visual art in Hong Kong.
- Completion of mega-truss transfer structure marks a key milestone.
- Remaining portion of podium and tower under construction.
- Scheduled to complete in late 2019.

Progress of key development initiatives

Artist Square Development Area

- Foundation works for Lyric Theatre Complex and Zone 3B Integrated Basement completed.
- Next construction phase of the Zone 3B Integrated Basement will commence in the first quarter of 2018 subject to Legislative Council's funding approval.
- Funding proposal for Artist Square Bridge (ASB) discussed at Legislative Council. In response to members' concern on its high estimated cost, WKCD A is critically reviewing the design of ASB with the Government. Members will be updated when revised design is available.



Progress of key development initiatives

Art Park

- Construction works of Art Park on track with the completion of Phase 1 expected by the end of this year.
- Freespace (including a black box theatre and an outdoor stage) saw its official topping-out in July 2017 and is anticipated to open in 2019.
- Waterfront promenade in front of Art Park and M+ will be opened in phases starting from 2018.



Progress of key development initiatives

Hong Kong Palace Museum (HKPM)

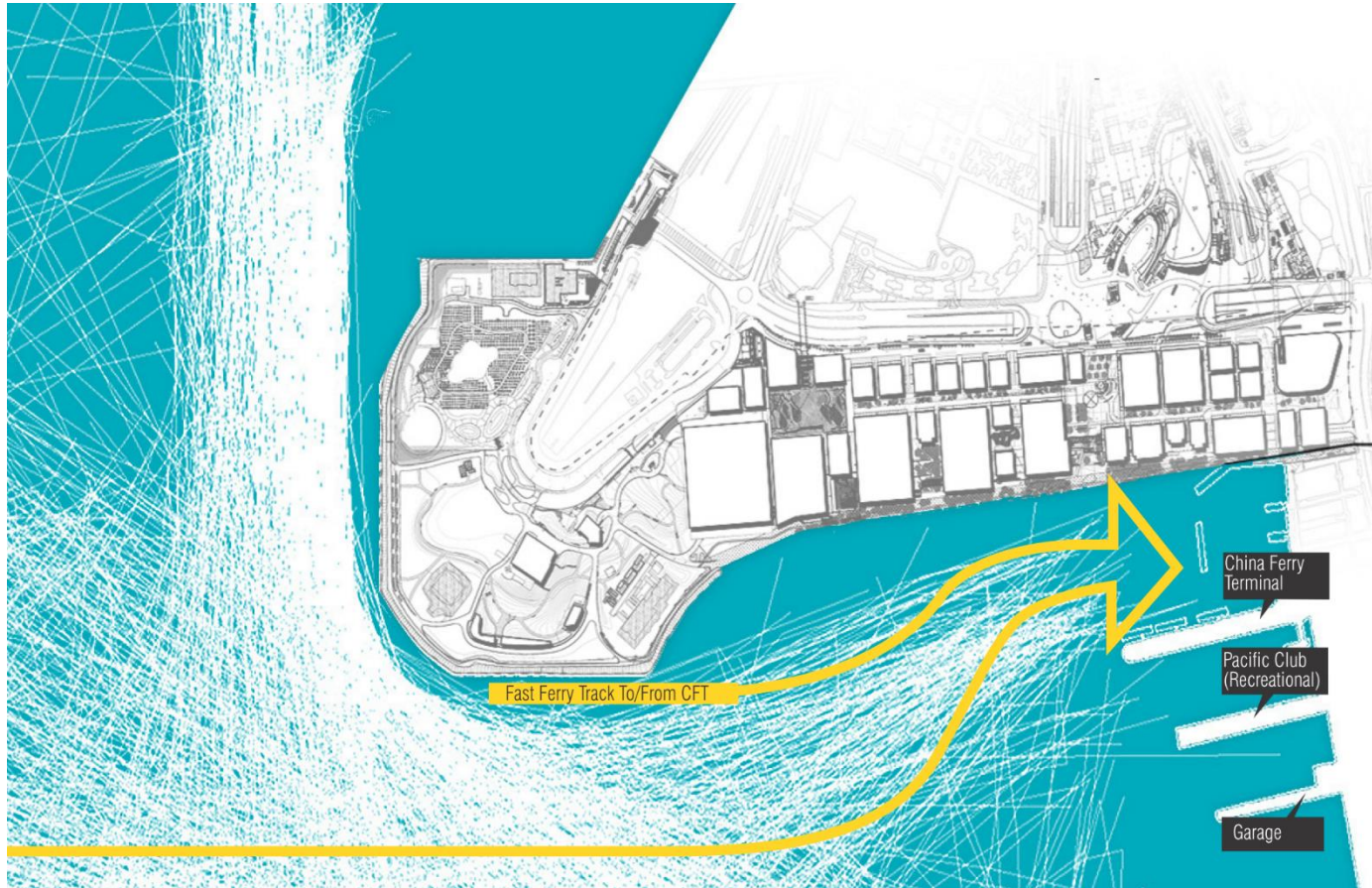
- Collaborative Agreement with the Palace Museum signed on 29 June 2017 to take the HKPM project forward. Scheme design for HKPM approved by WKCD Board in September 2017.
- WKCD commenced the next stage of public engagement:
 - Media roundtable arranged on 6 October 2017
 - Pop-up exhibitions held over three weekends at China Hong Kong City, Hong Kong Maritime Museum and Sha Tin Town Hall from 20 October 2017
- Tender for foundation works of HKPM issued on 16 October 2017 with piling work scheduled to commence by April 2018.
- Design consultant of HKPM will brief Members on the proposed scheme design under separate presentation.



Progress of key development initiatives

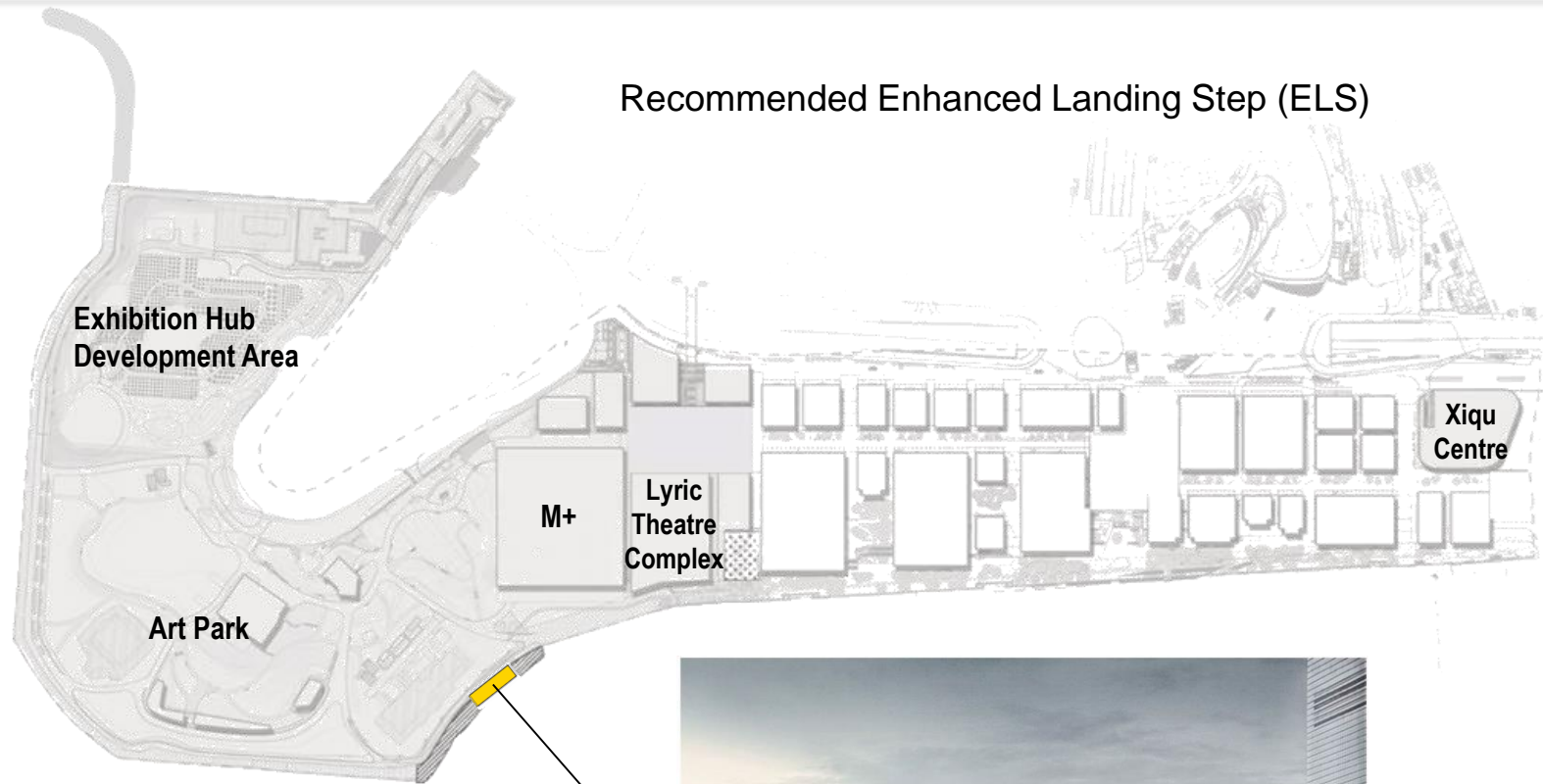
Study on Proposed Marine Access

Existing Marine Traffic Condition



Progress of key development initiatives

Study on Proposed Marine Access



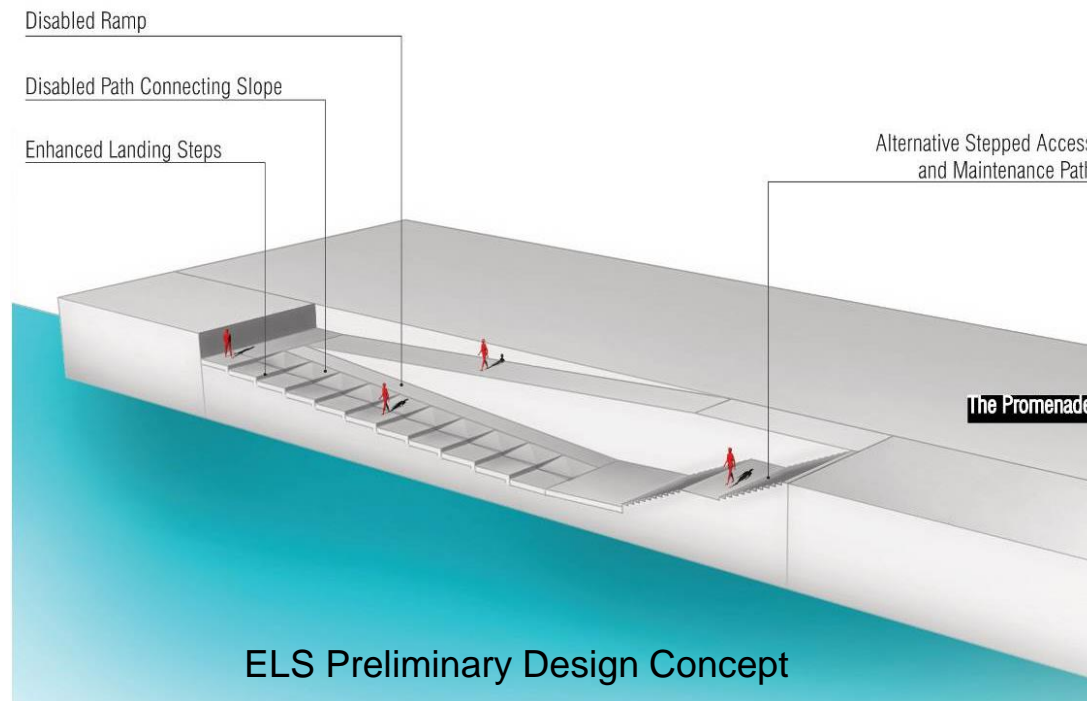
- Recommended Location
- Early Phase Development



Progress of key development initiatives

Study on Proposed Marine Access

- At the existing sloping seawall to minimise disruption to the existing shoreline, integrate well with the waterfront promenade and align with the status of WKCD.
- Only utilize the area at the landside above the existing High Water Mark (HWM) along the sloping seawall which therefore can be implemented without affecting the water spaces subject to engineering feasibility study.



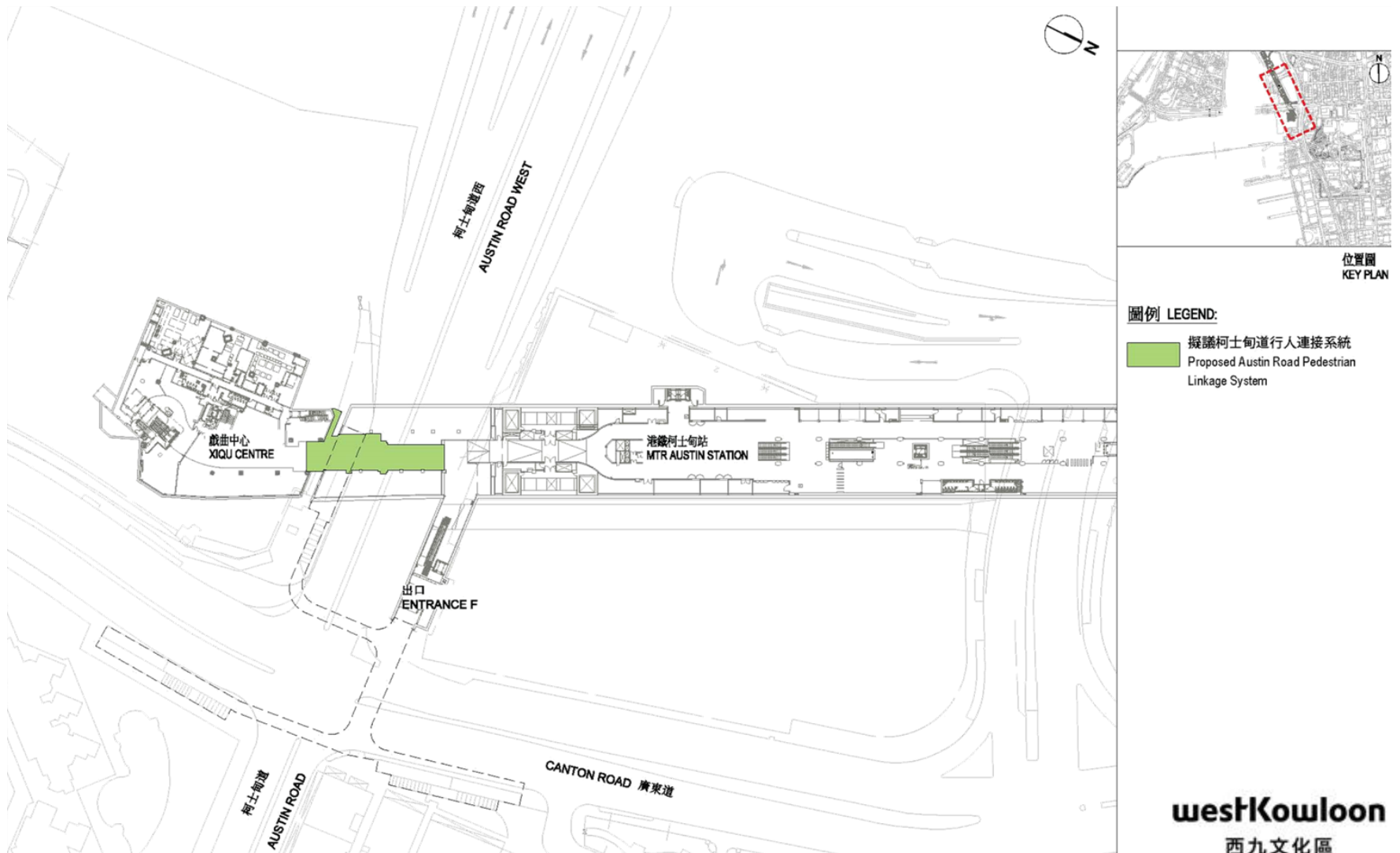
Progress of key development initiatives

Study on Proposed Marine Access

- The Consultant initially considered that constructing the ELS at the recommended location adjacent to the M+ may not trigger the justification test under the Protection of the Harbour Ordinance as it will not involve reclamation in the harbour.
- Gazettal process will be required for the seawall modification works under the Foreshore and Sea-bed (Reclamations) Ordinance.

Progress of key development initiatives

Austin Road Pedestrian Linkage System (APLS)



Progress of key development initiatives

Austin Road Pedestrian Linkage System (APLS)

- A direct and convenient pedestrian linkage between MTR Austin Station and Xiqu Centre for heading WKCD and other destinations in Tsim Sha Tsui area.
- To enhance connectivity of WKCD and relieve anticipated congestion of the existing pedestrian subway at the junction of Austin Road and Canton Road after the stage by stage opening of the WKCD facilities.
- Subject to the Legislative Council's funding approval, the construction of APLS is targeted to commence in the first quarter of 2018.

Advice Sought

Members to note:

- Development progress of WKCD; and
- Connectivity improvement efforts involved.

Thank you