

**路政署 主要工程管理處**

**Major Works Project Management Office  
Highways Department**



**Task Force on Harbourfront Developments  
in Kowloon, Tsuen Wan and Kwai Tsing**

**中九龍幹線**  
Central Kowloon Route

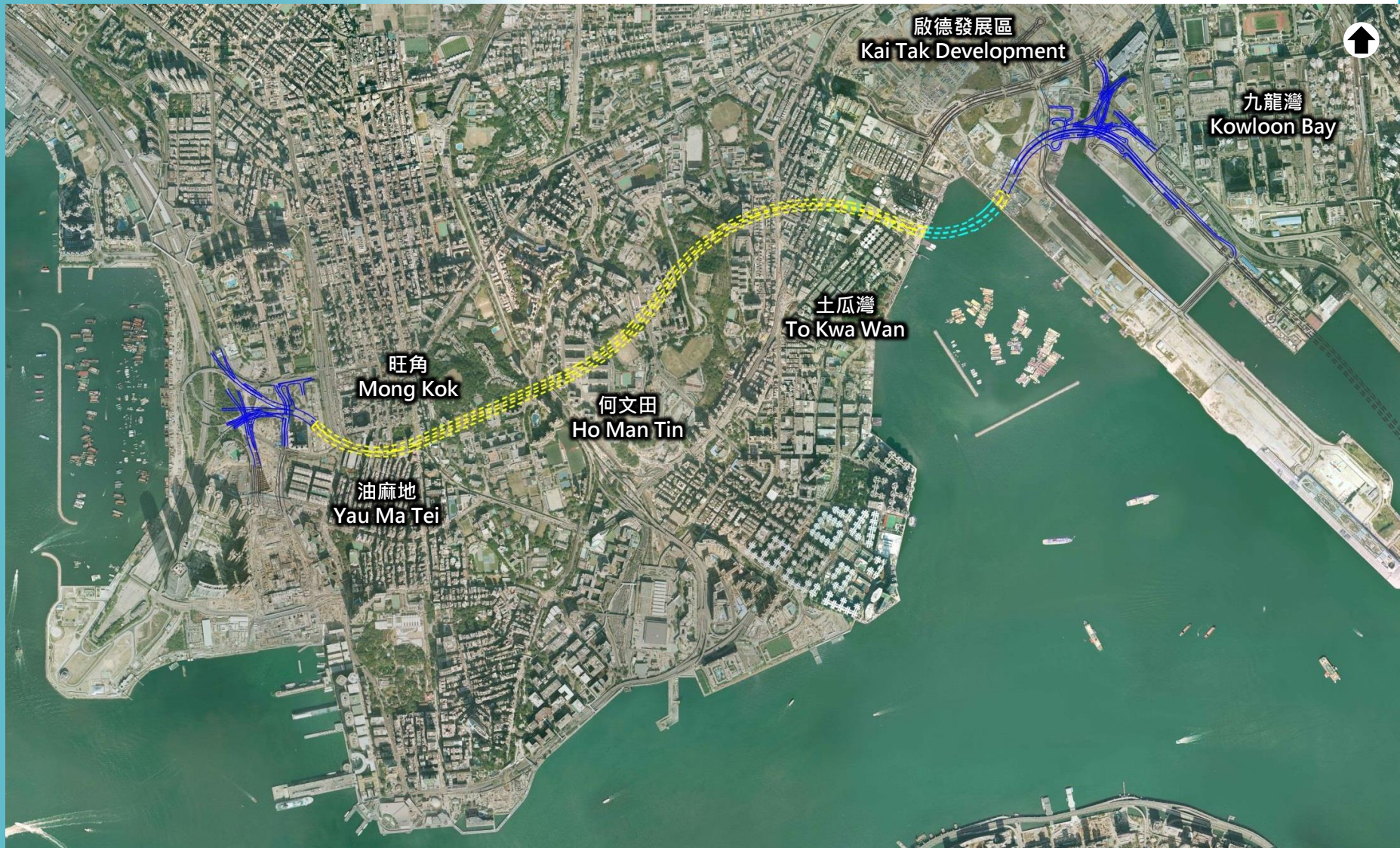
**Central Kowloon Route –  
Proposed Temporary Government  
Land Allocation for Temporary Barging  
Facility at Kwai Yue Lane, Kwai Chung**

**中九龍幹線 —  
擬議在葵涌葵裕里以臨時政府  
撥地形式設置臨時躉船轉運站**

**22 September 2016**

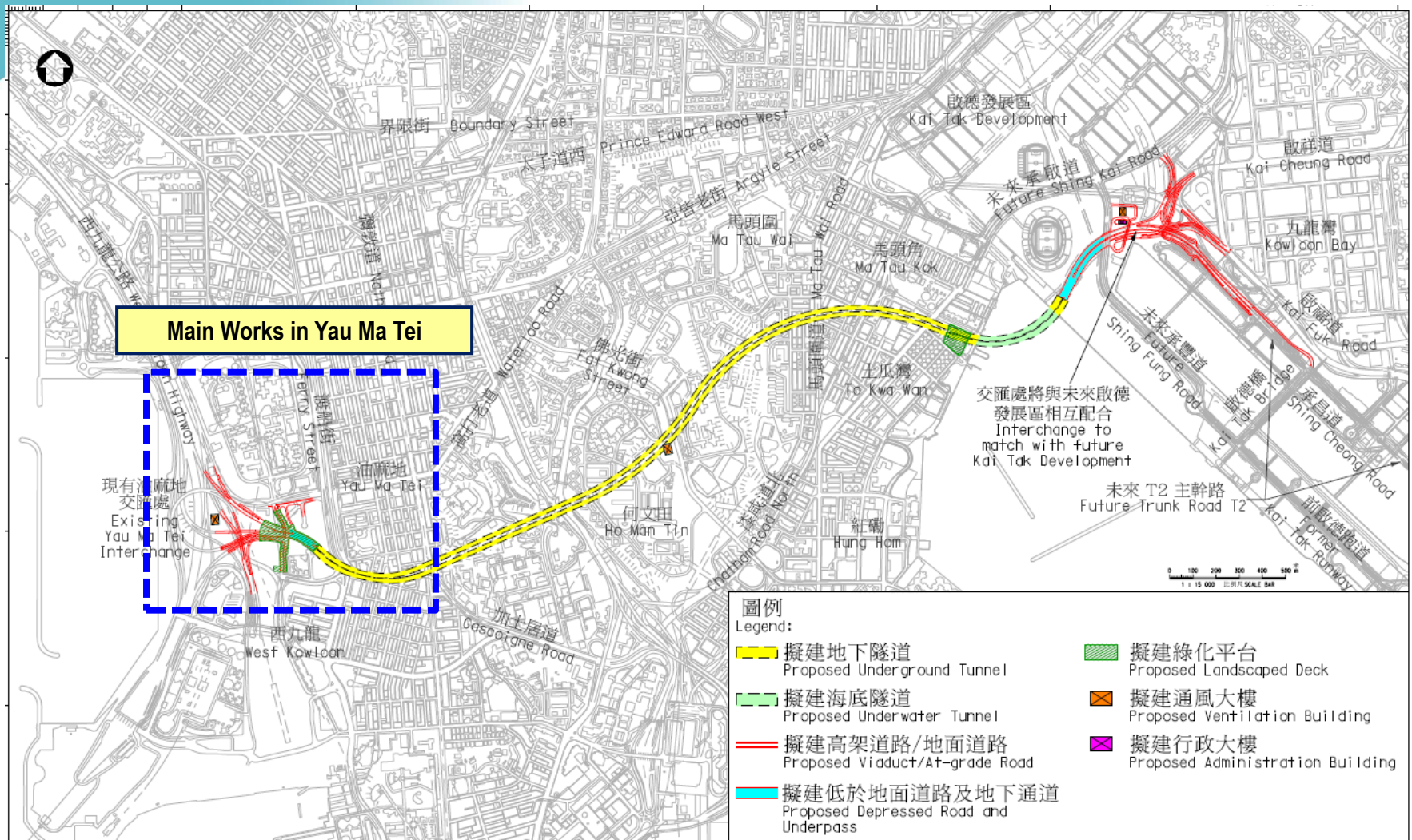


# Central Kowloon Route (CKR)



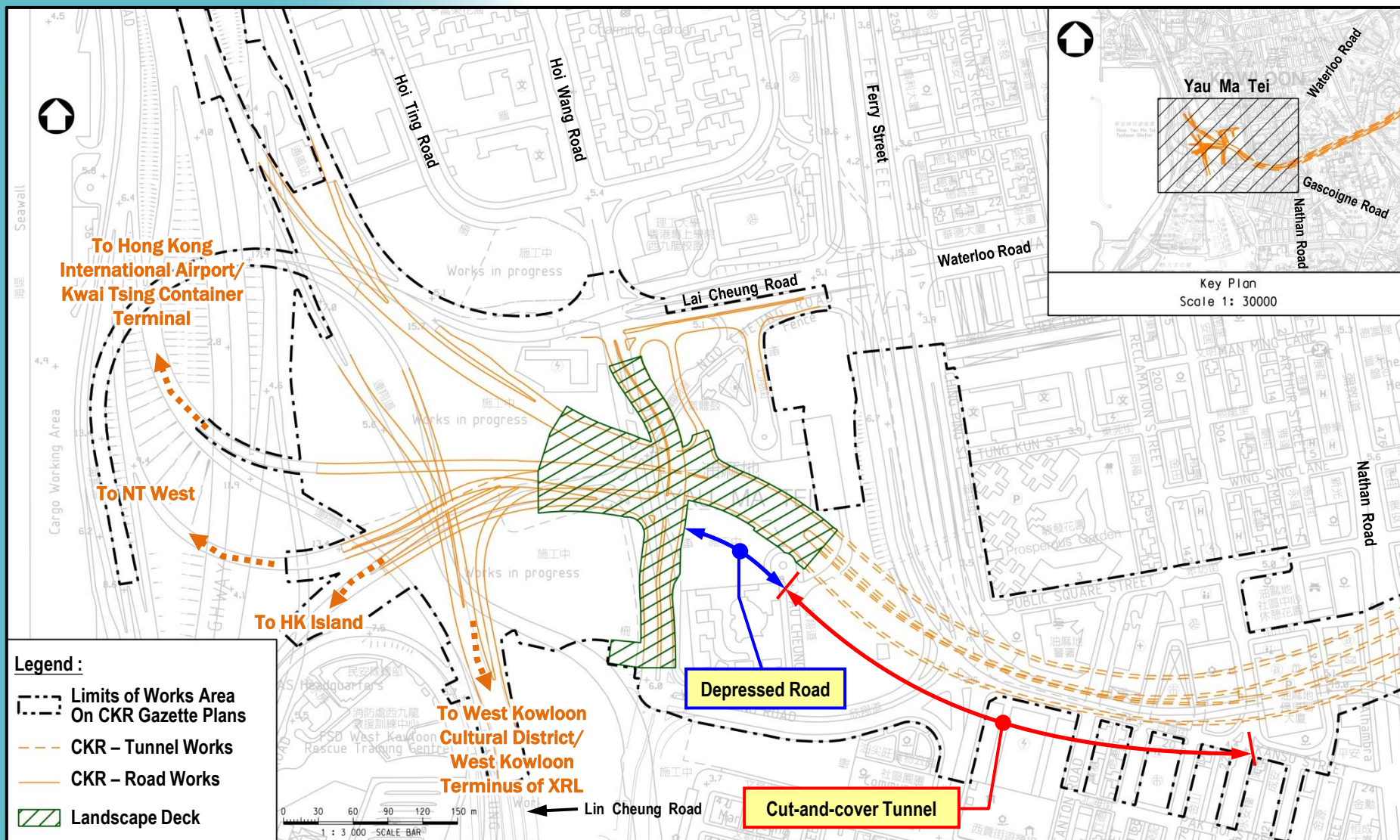


# General Layout of CKR



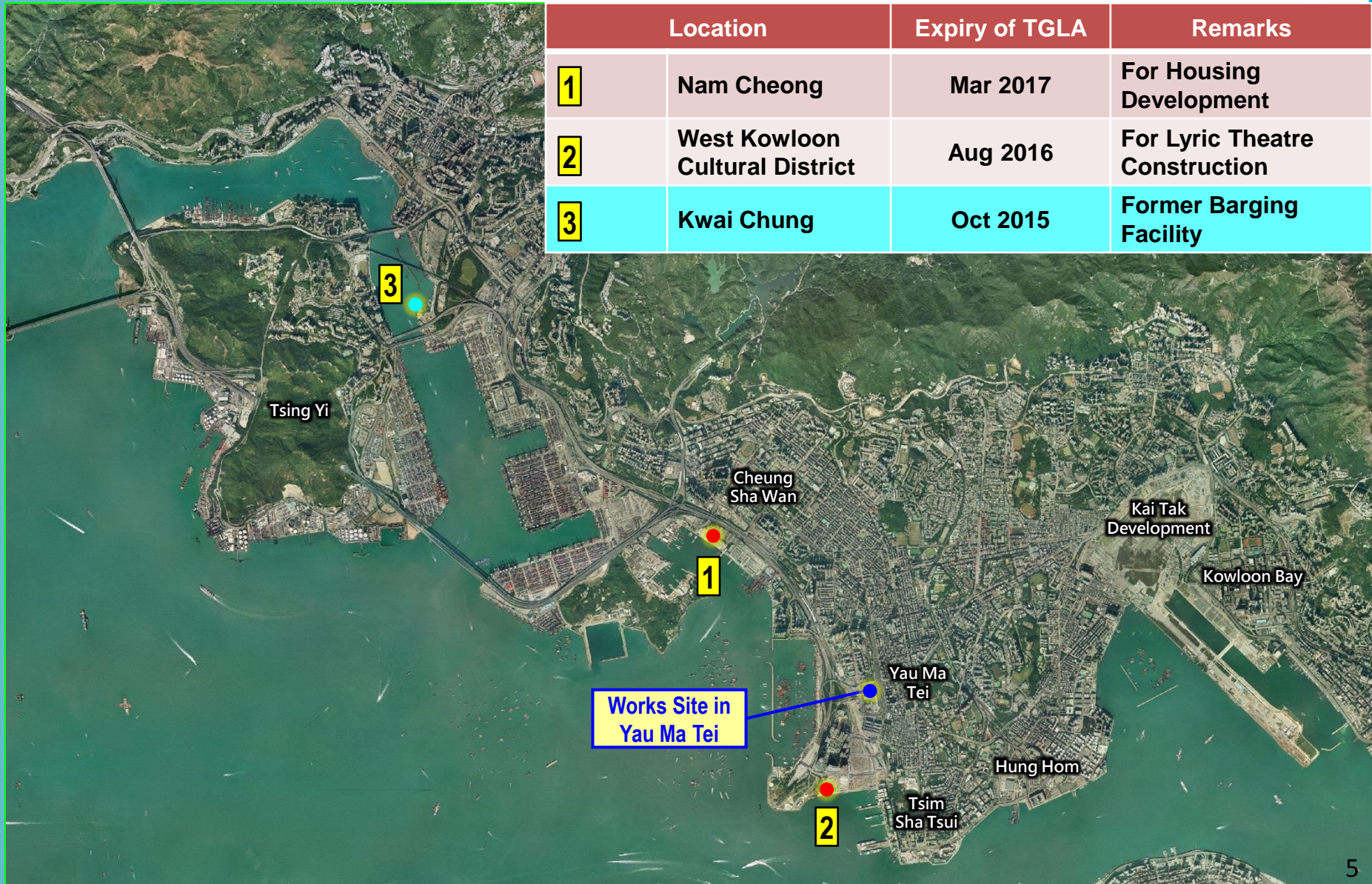


# Major Works Items in Yau Ma Tei Area



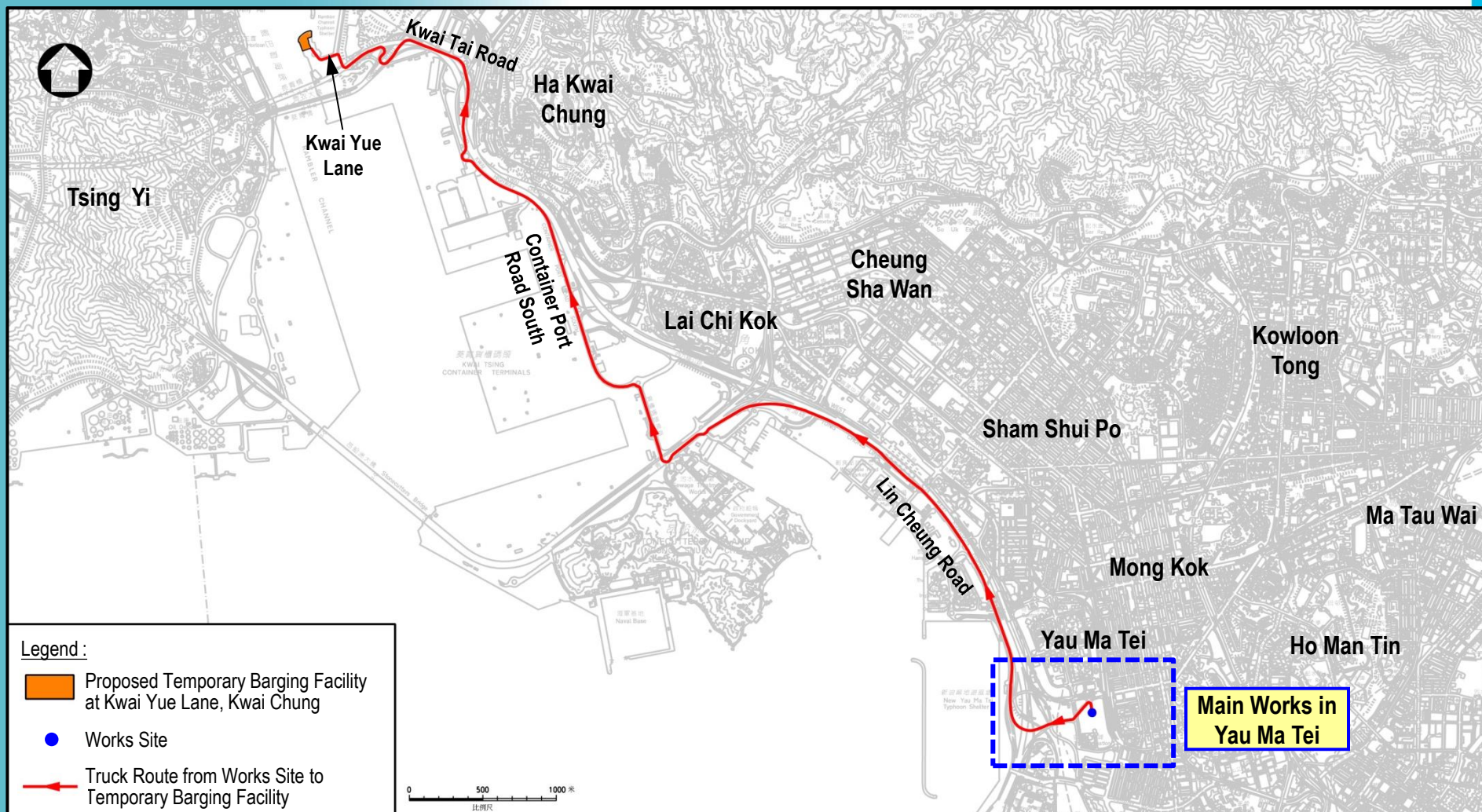


# Existing/Previous Barging Facilities in the Vicinity





# Proposed Temporary Barging Facility at Kwai Chung



# Proposed Temporary Barging Facility at Kwai Chung



藍巴勒海峽  
RAMBLER CHANNEL

**Proposed TGLA for  
Temporary Barging Facility  
(Area = 7 900 m<sup>2</sup>)**

Access Road

Kwai Yue Lane

Kwai Yue Street

Tsing Kwai Highway

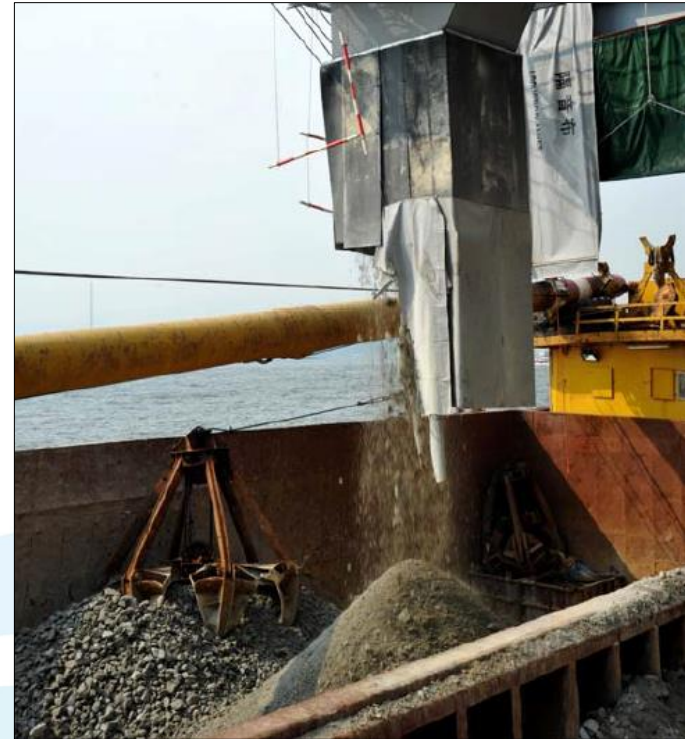
Kwai Tai Road

Kwai Tsing Road

0 50 100 m  
1 : 2 000 SCALE BAR



# Proposed Mitigation Measures



Dust enclosure with sprinkler system for temporary barging facility



# Proposed Mitigation Measures



**Spray water over haul road**



**Trucks with mechanical cover**

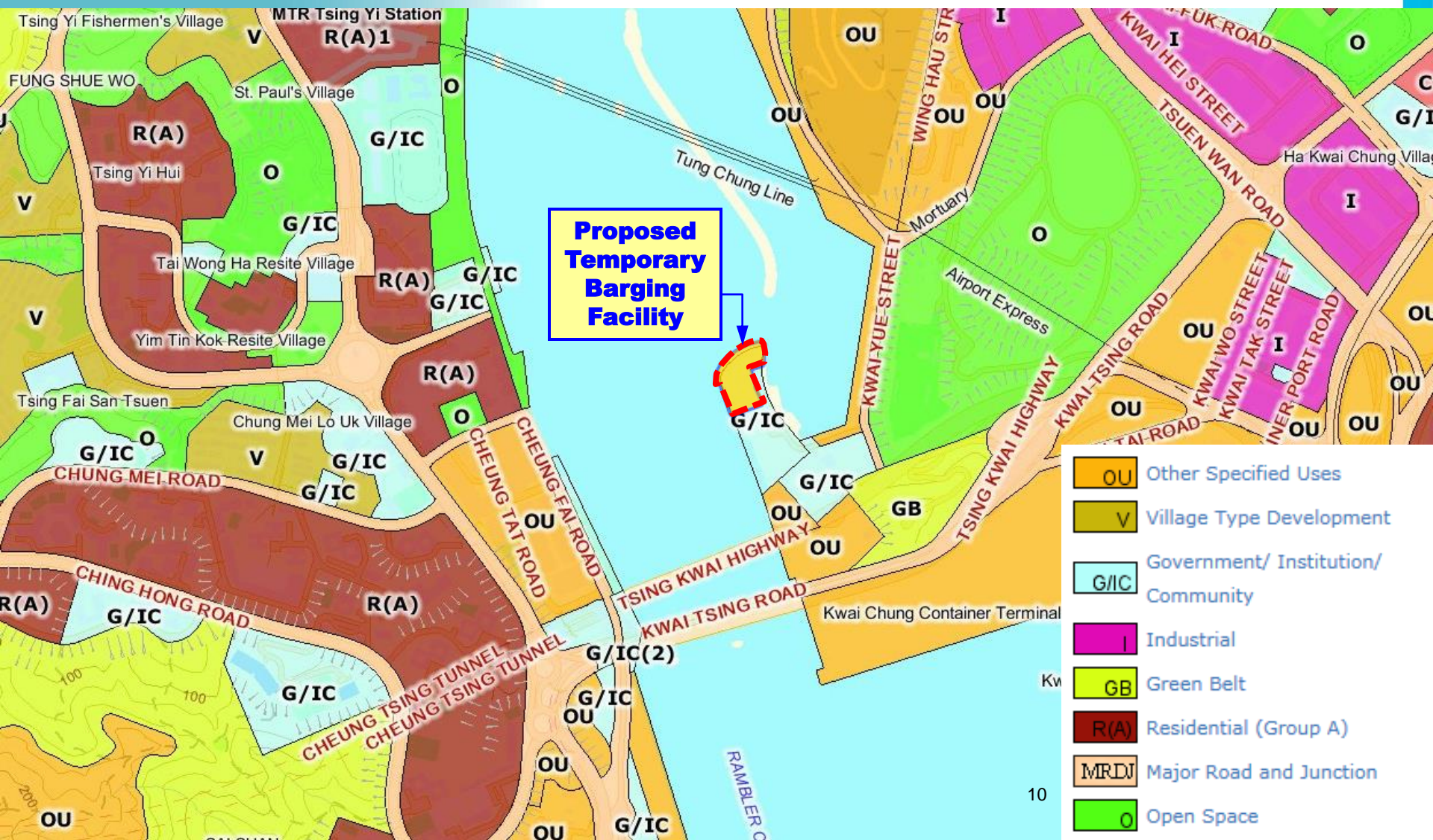


**Provide wheel-washing facility at site entrance**





# Kwai Chung Outline Zoning Plan





# Current View of Proposed Site at Kwai Chung





## Proposed hoardings with greening





**THANK YOU**



# Q & A