

PROGRESS UPDATE ON THE WEST KOWLOON CULTURAL DISTRICT

**Task Force on Harbourfront Developments in Kowloon,
Tsuen Wan and Kwai Tsing**

9 November 2015

Purpose

Provide updates on:

- Development progress of WKCD; and
- Artist Square Footbridge

Progress of key development initiatives

Xiqu Centre



- Built for xiqu (Chinese opera) performances
- Main superstructure works commenced in December 2014
- Target completion in 2017

Progress of key development initiatives

M+



- New museum for visual art in Hong Kong
- Main superstructure contract awarded in September 2015
- Target completion in 2018

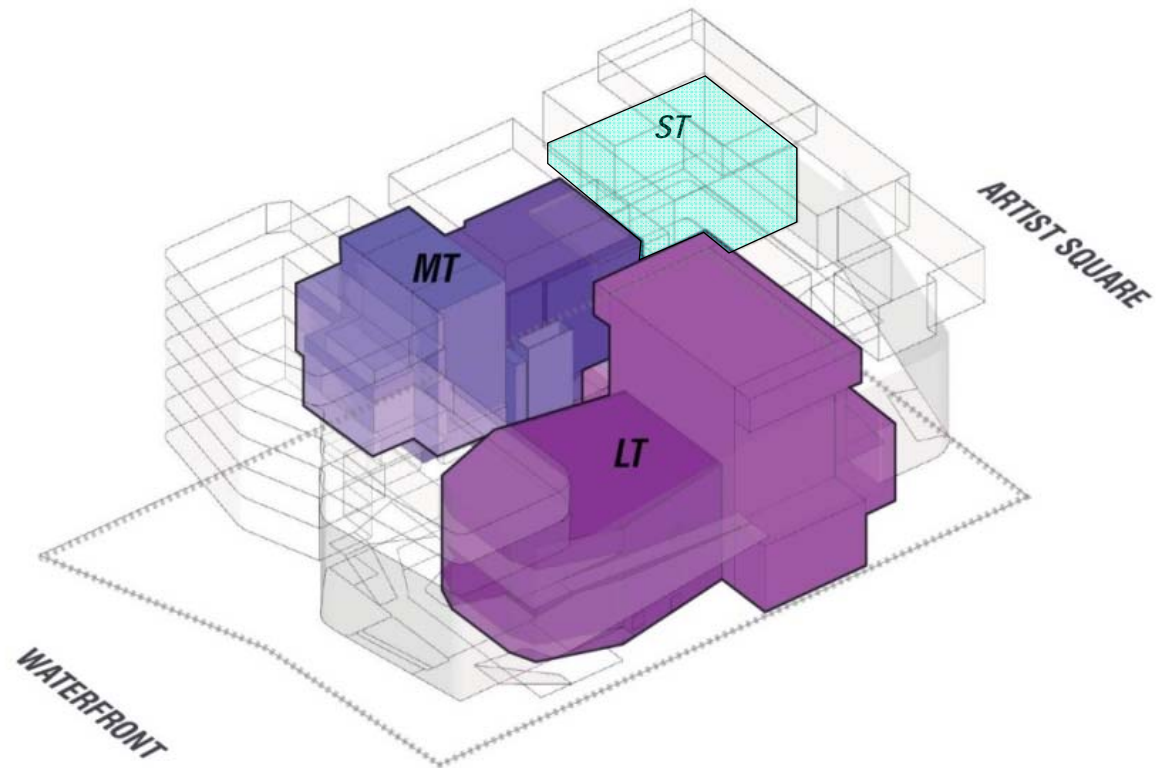


westKowloon
西九文化區

Progress of key development initiatives

Lyric Theatre Complex

- Lyric Theatre, Medium Theatre, Studio Theatre, and Resident Company Centre
- Design is underway
- Target completion around 2020



Progress of key development initiatives

ASDA public space



- Scheme design for open space in ASDA is ongoing
- Target completion around 2020



Progress of key development initiatives

The Park



- Construction of M+ Pavilion is underway with target completion in 2016
- Phased completion of the Park, including Black Box, starting from 2017



Progress of key development initiatives

Nursery Park



westKowloon
西九文化區

Progress of key development initiatives

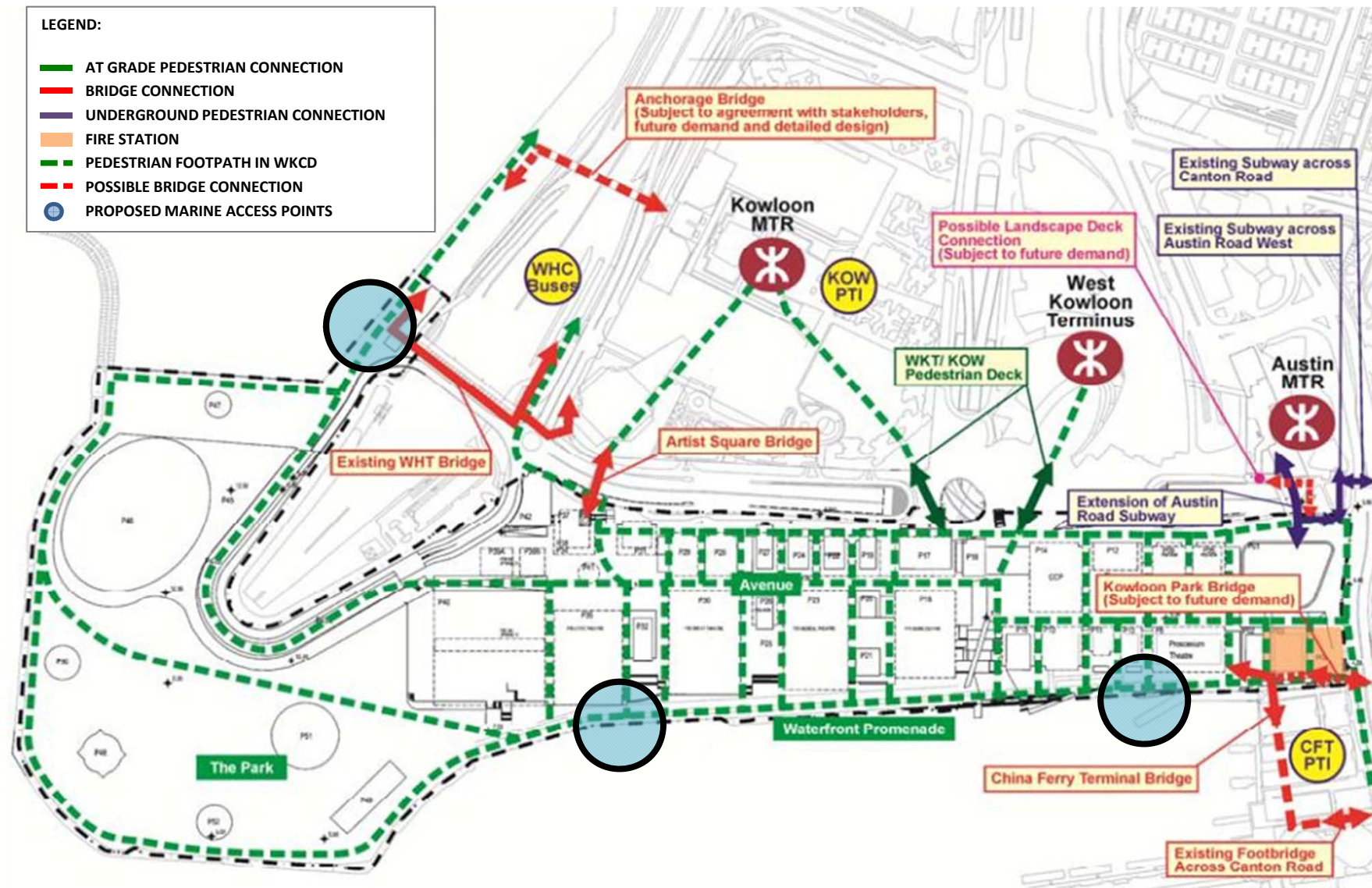
Nursery Park



- Nursery Park opened in July 2015 for leisure pursuits and open-air events
- Testing ground for proposed park management philosophy, Bylaw and guidelines

Progress of key development initiatives

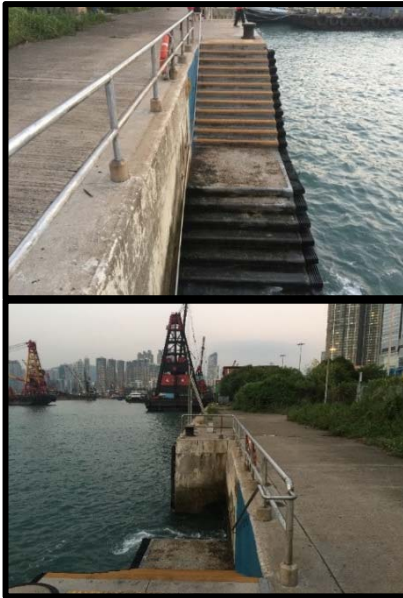
WKCD Connectivity



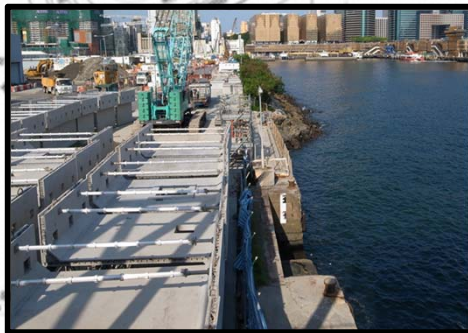
Progress of key development initiatives

Proposed Marine Access Points

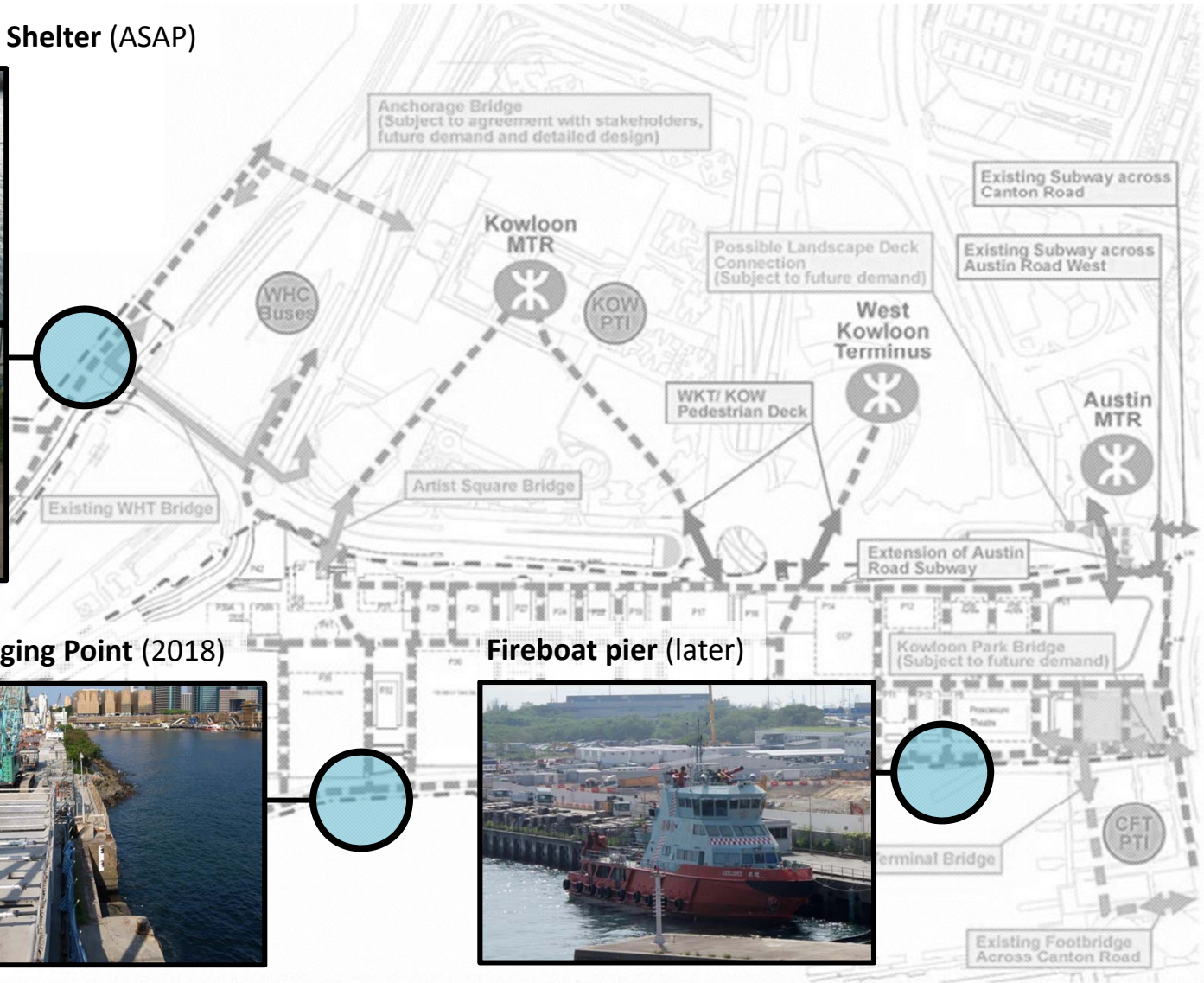
New Yau Ma Tei Typhoon Shelter (ASAP)



MTRC Barging Point (2018)

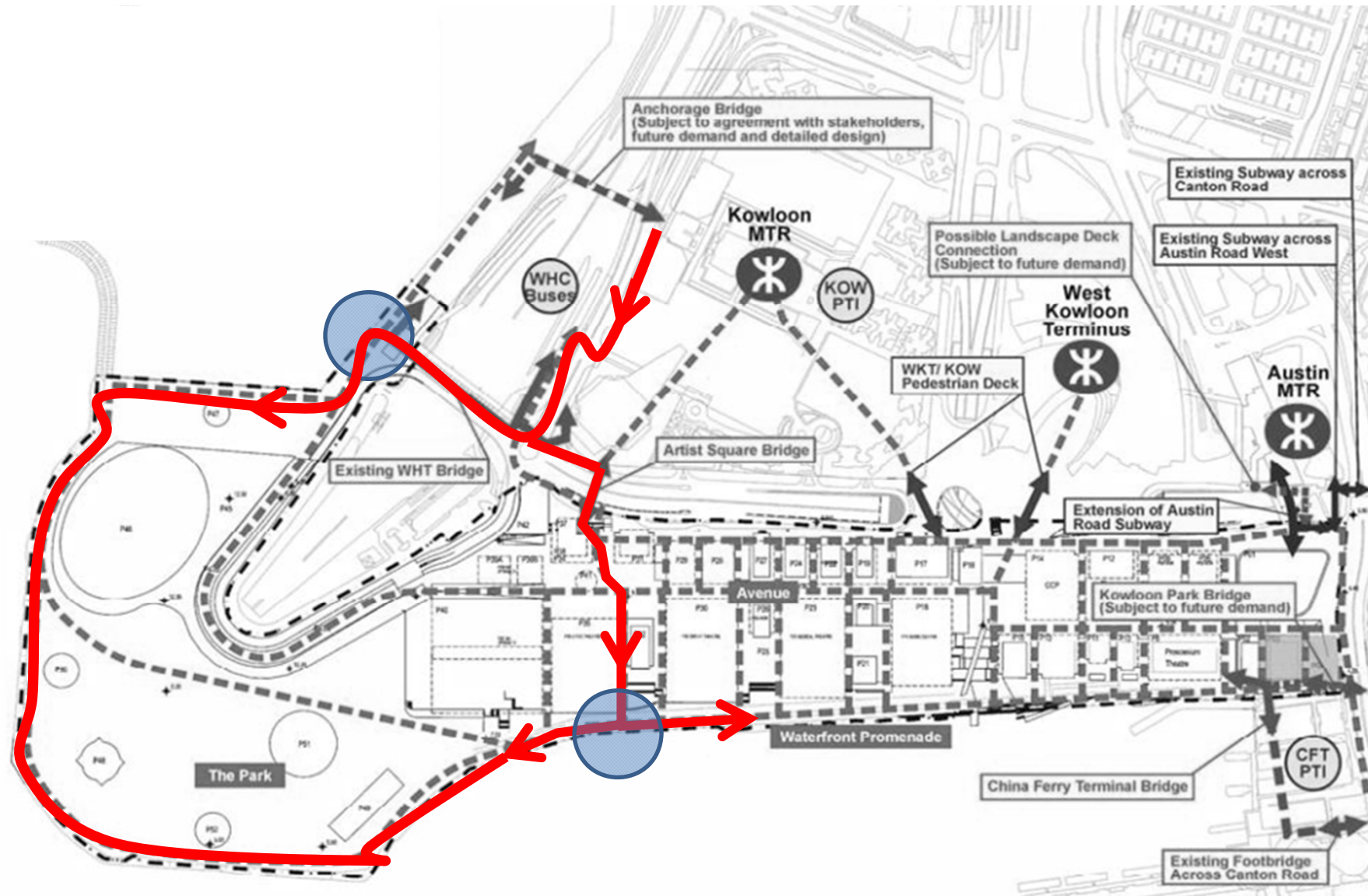


Fireboat pier (later)



Progress of key development initiatives

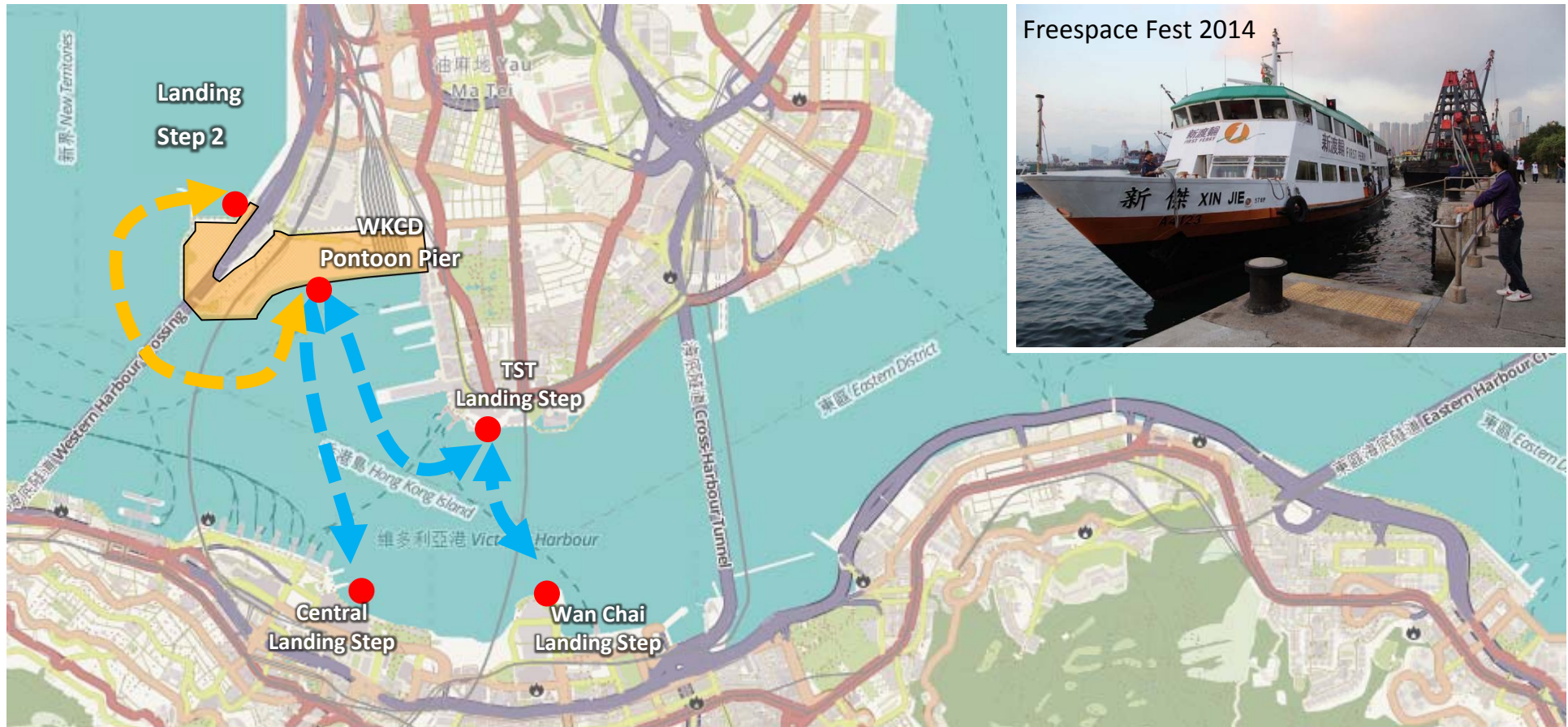
Pedestrian Route



Progress of key development initiatives

Possible marine activities – Cross Harbour Service

- Ferry Service to TST, Central and Wan Chai for events curated by the WKCD A



westKowloon
西九文化區

Progress of key development initiatives

Possible marine activities – Water Tour Service

- Partner with third party operators to extend their existing water tour services to include the WKCD.



Wing On Travel 198 persons

(C) watertours



westKowloon

西九文化區

Progress of key development initiatives

Other possible marine activities – Water Taxi

- A water taxi is usually a small vessel (5 – 7m in length) with capacity of about 10 - 16 passengers.
- The service is usually 'on demand' and 'point-to-point' although small, slower, 'shuttle' type vessels are becoming increasingly common in and around developments that have a water network.
- A territory-wide marine initiative.



The False Creek Ferry, Vancouver



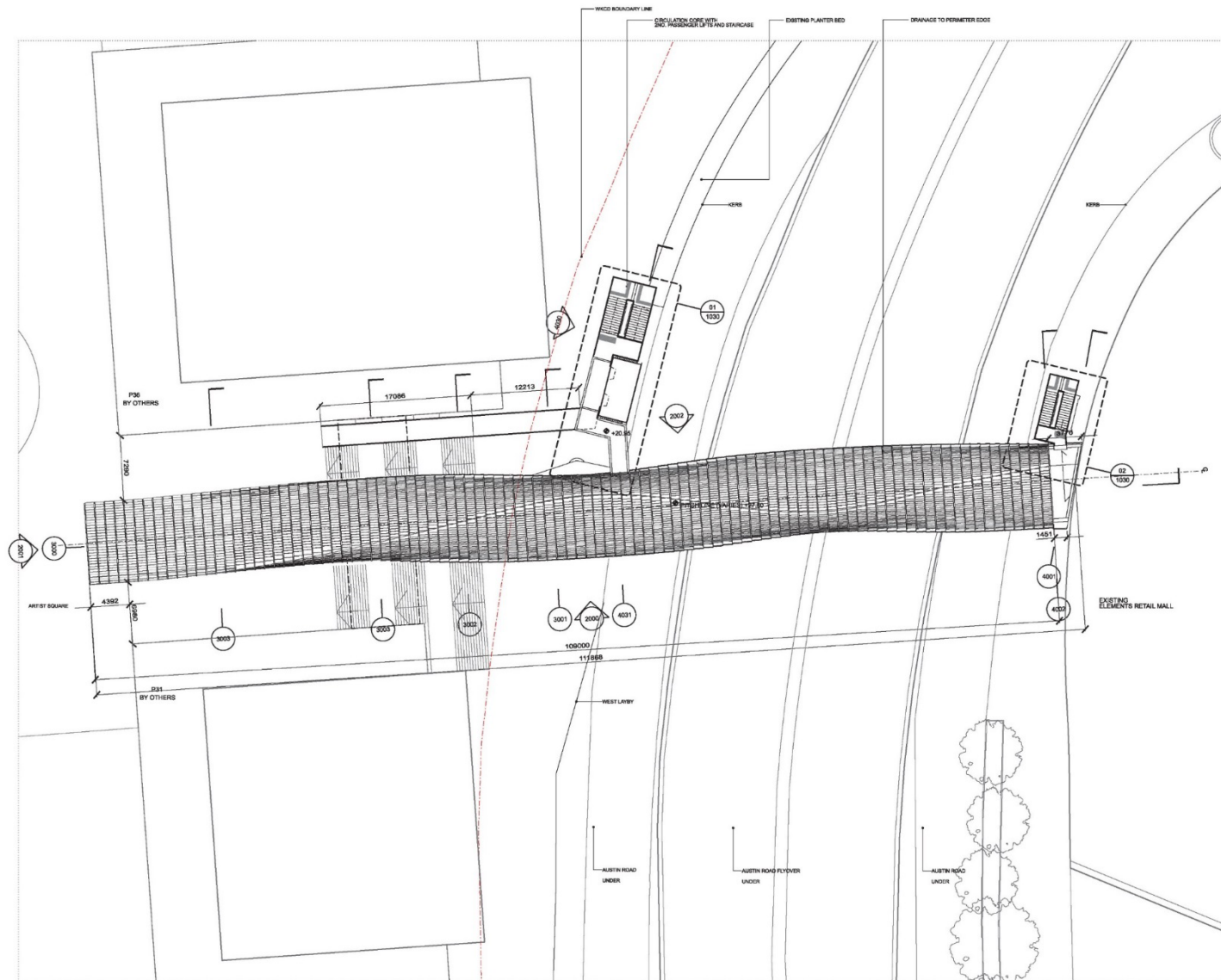
Water Taxi Auckland



Yellow Water Taxi New York

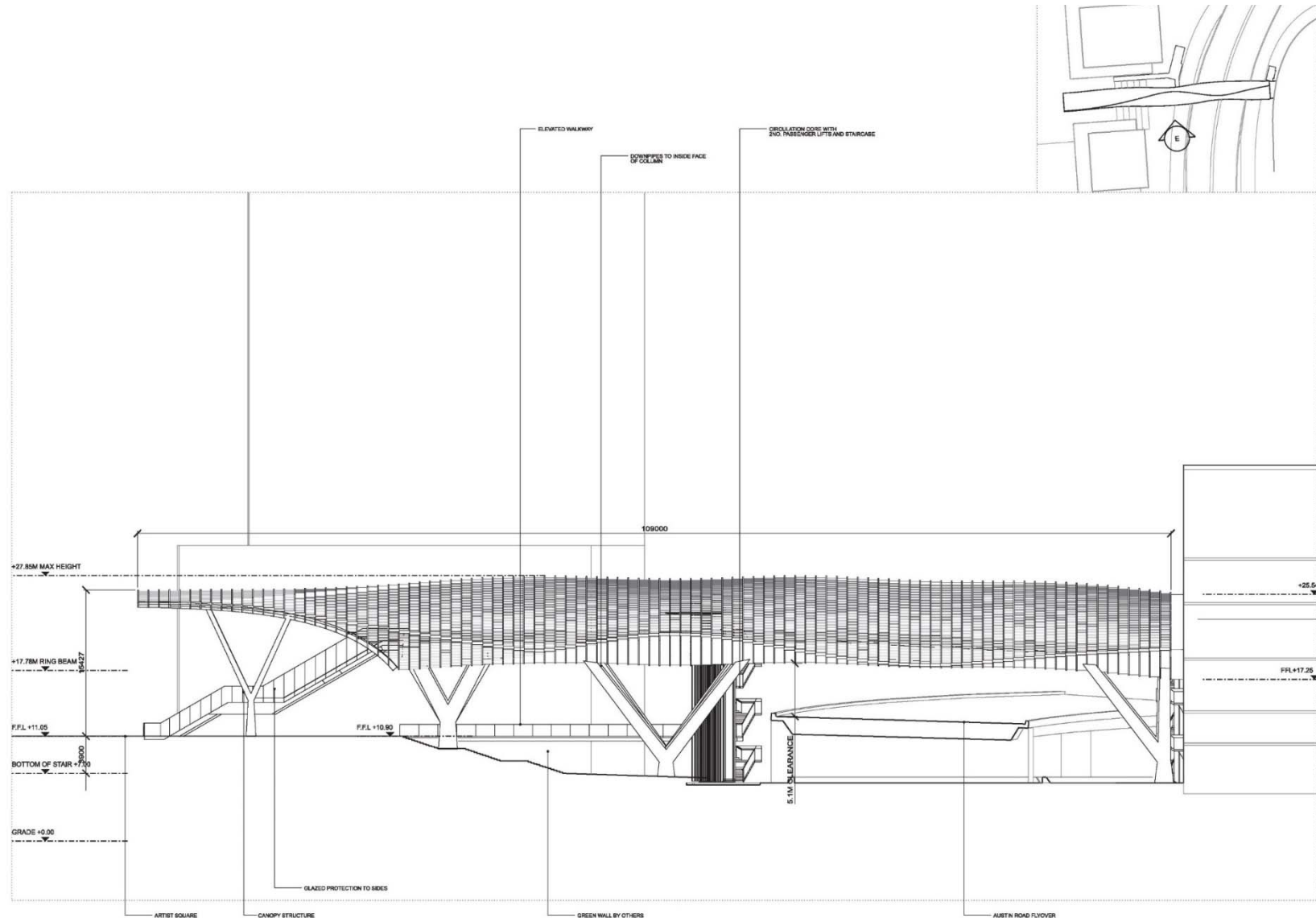
Progress of key development initiatives

Artist Square Footbridge – Roof Plan



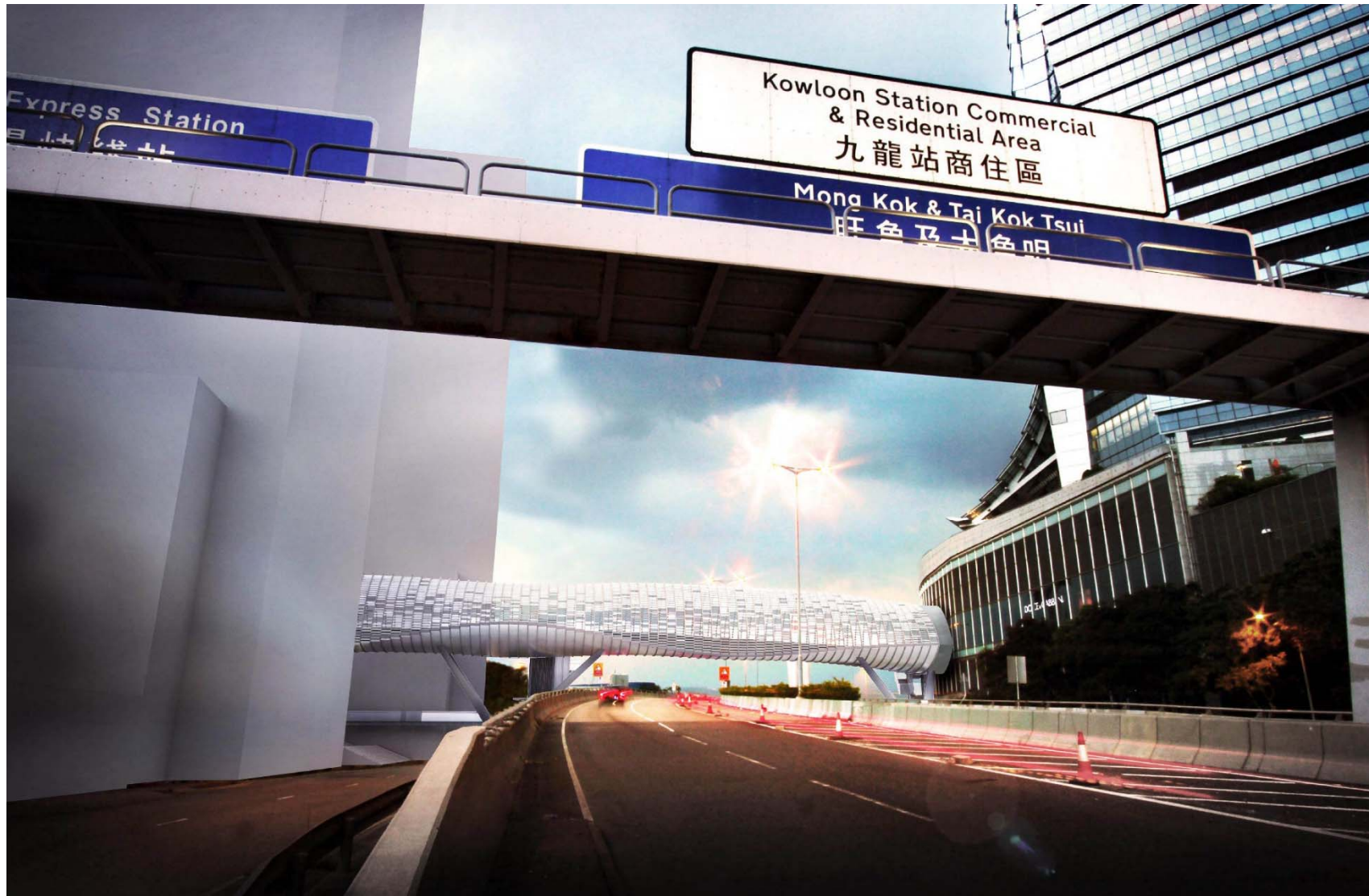
Progress of key development initiatives

Artist Square Footbridge – East Elevation



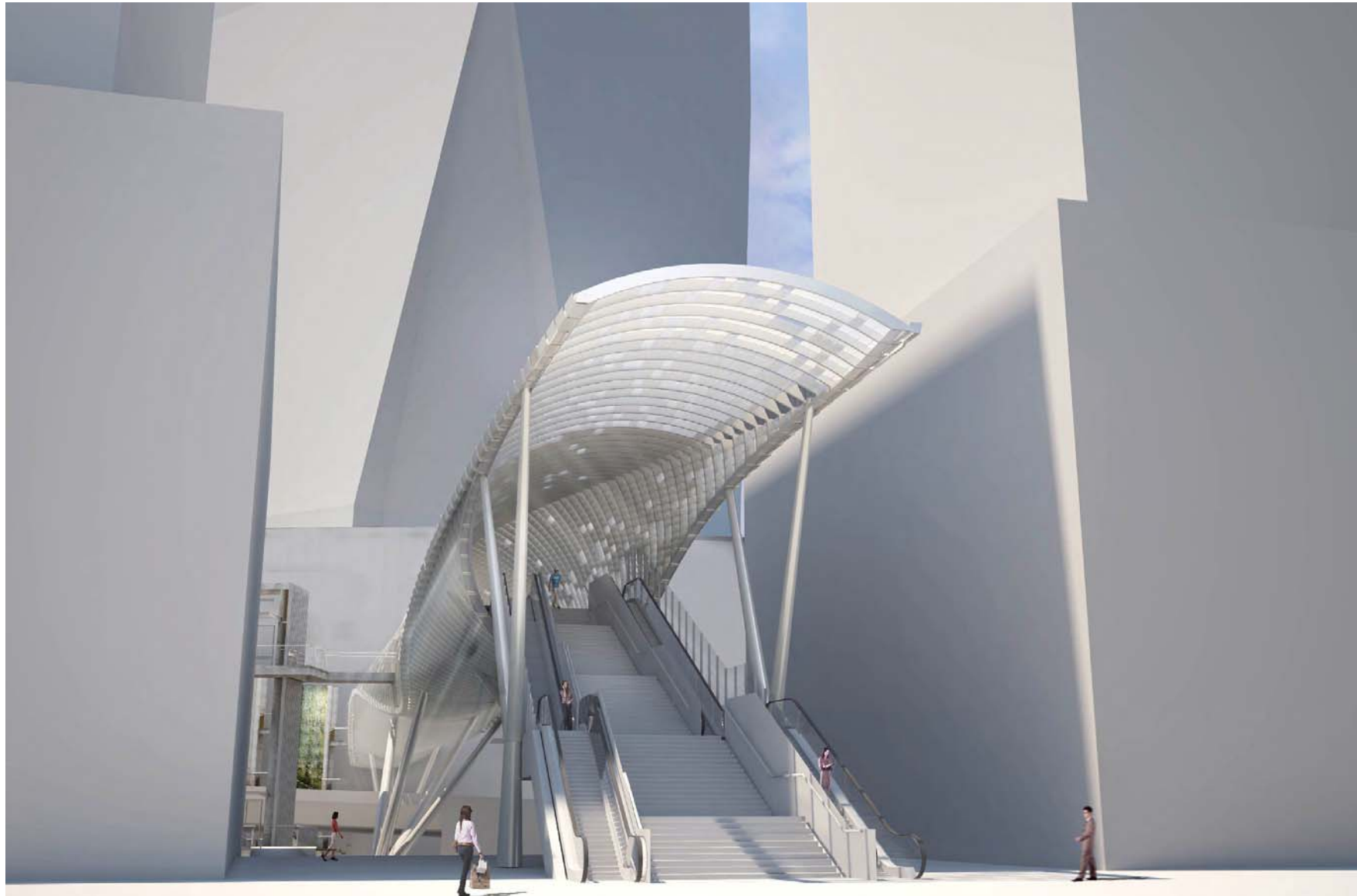
Progress of key development initiatives

Artist Square Footbridge



Progress of key development initiatives

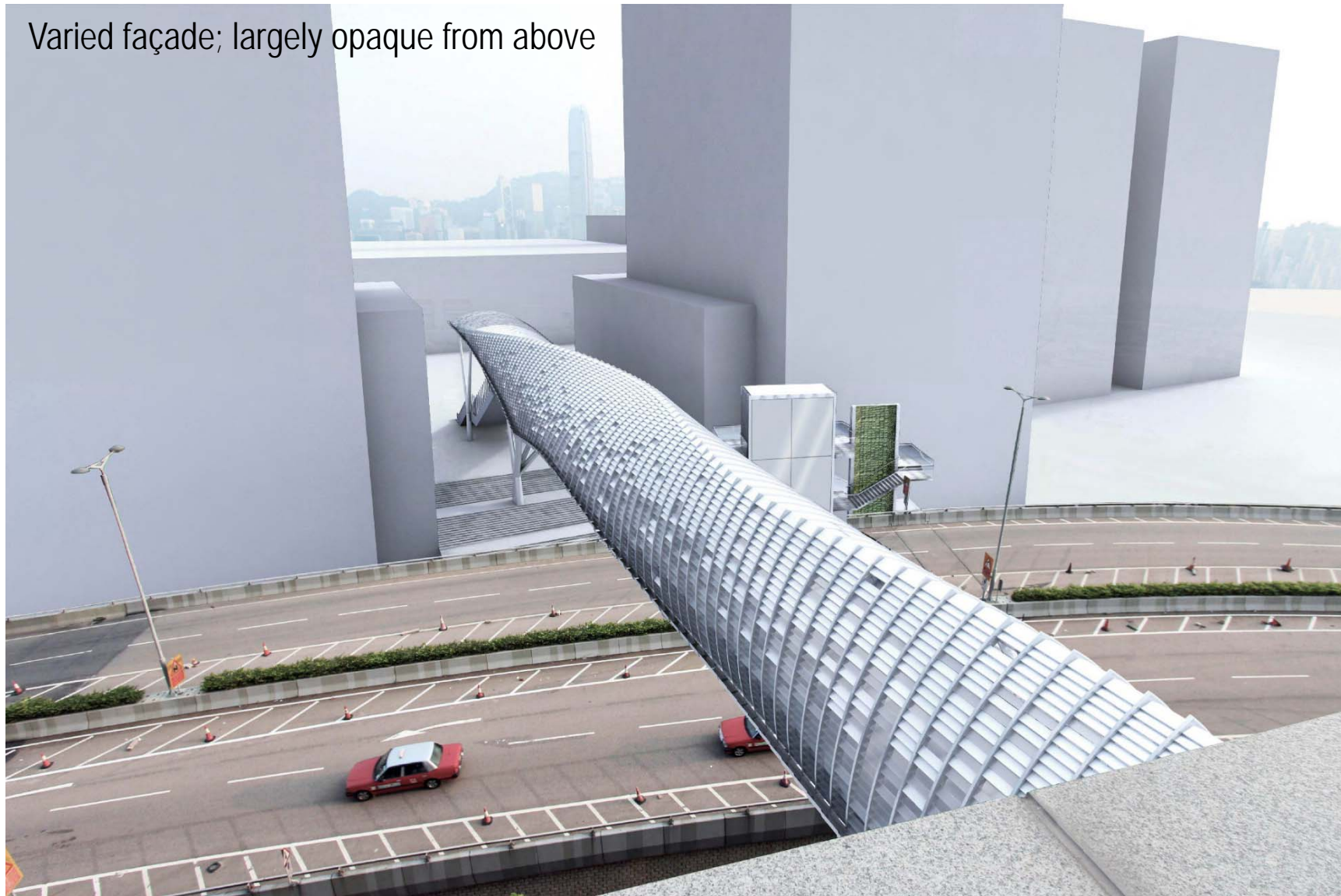
Artist Square Footbridge – View from Artist Square



Progress of key development initiatives

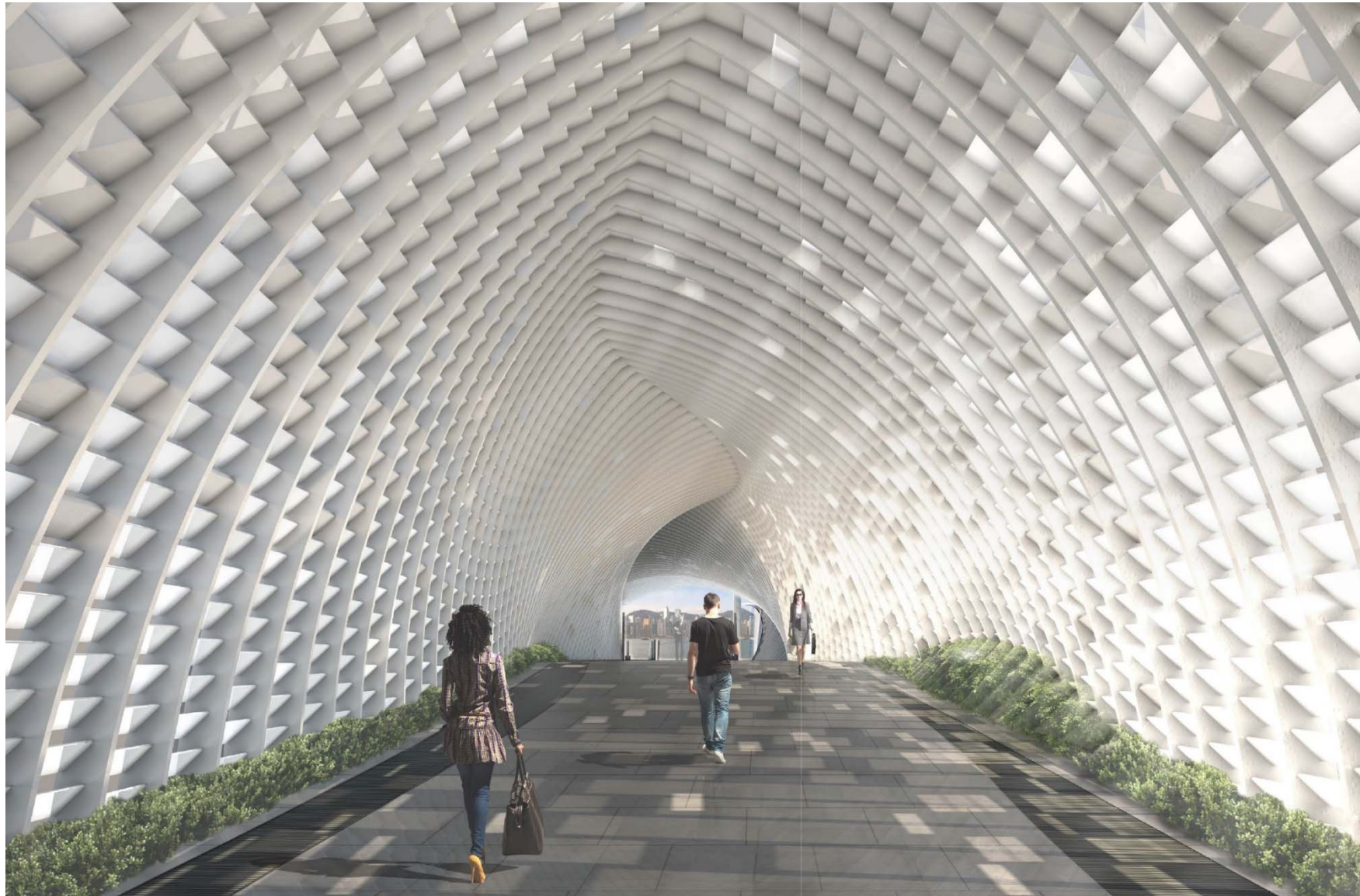
Artist Square Footbridge

Varied façade; largely opaque from above



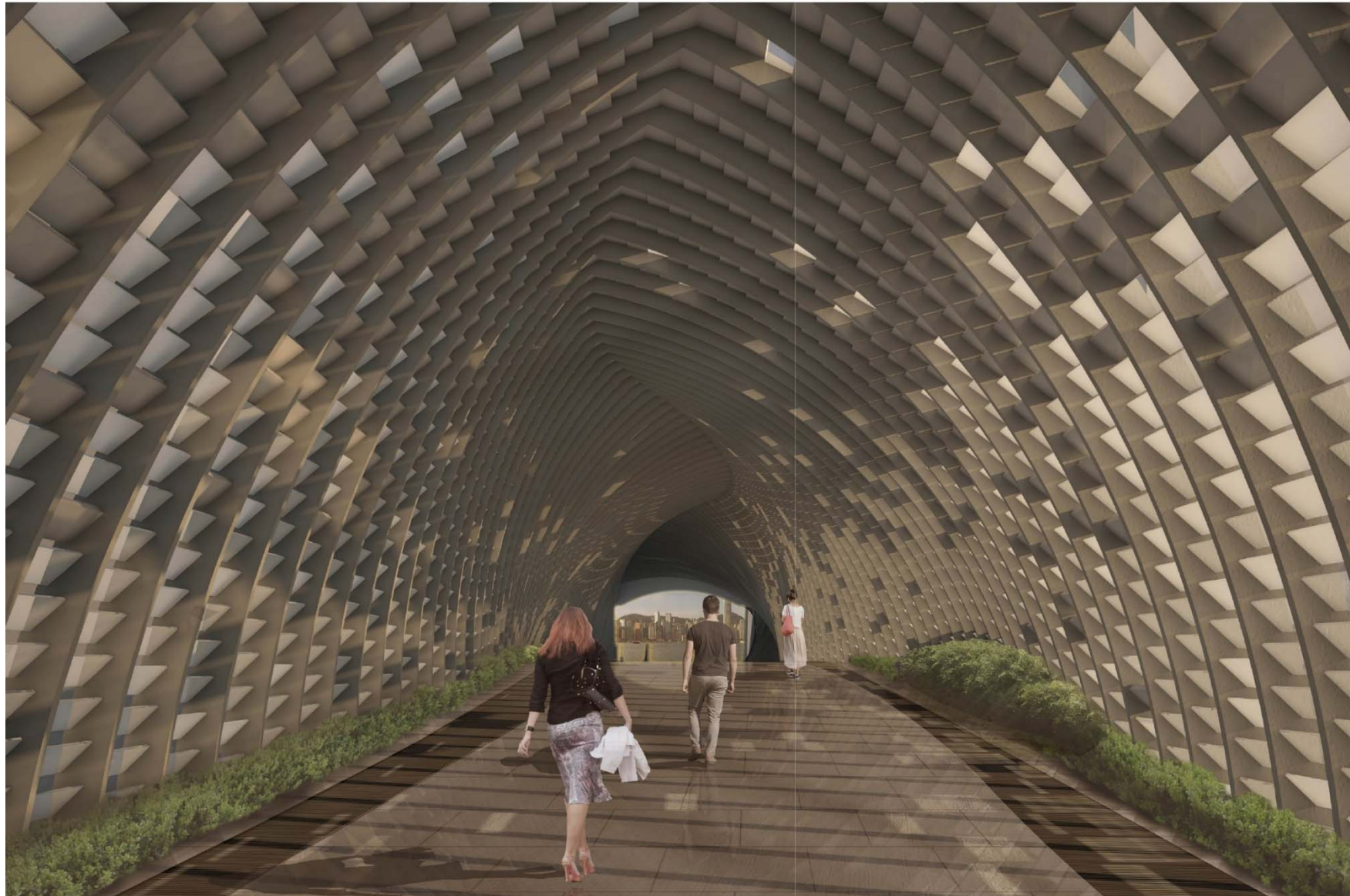
Progress of key development initiatives

Artist Square Footbridge



Progress of key development initiatives

Artist Square Footbridge



Progress of key development initiatives

Artist Square Footbridge



westKowloon
西九文化區

Advice Sought

Members to note and provide comments on:

- Progress of the WKCD development; and
- Artist Square Footbridge

Thank you