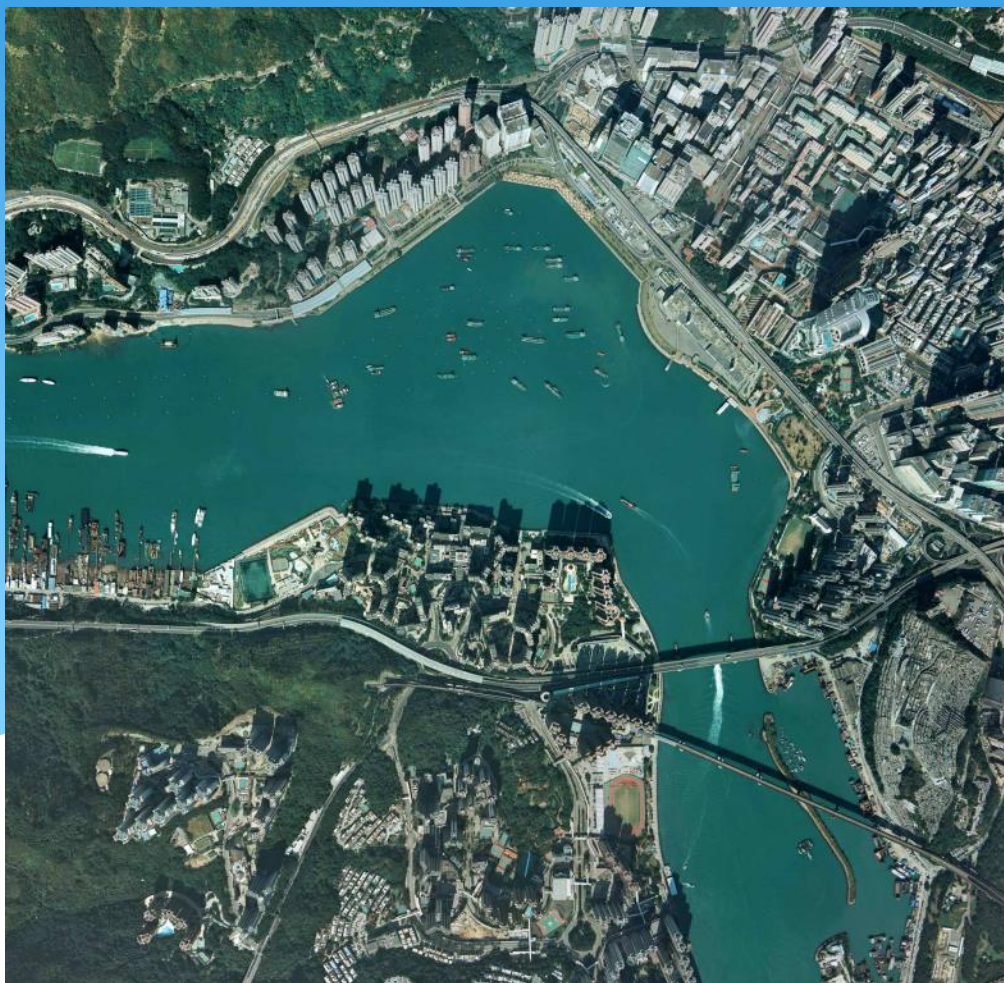


Water Quality along the Tsuen Wan Waterfront



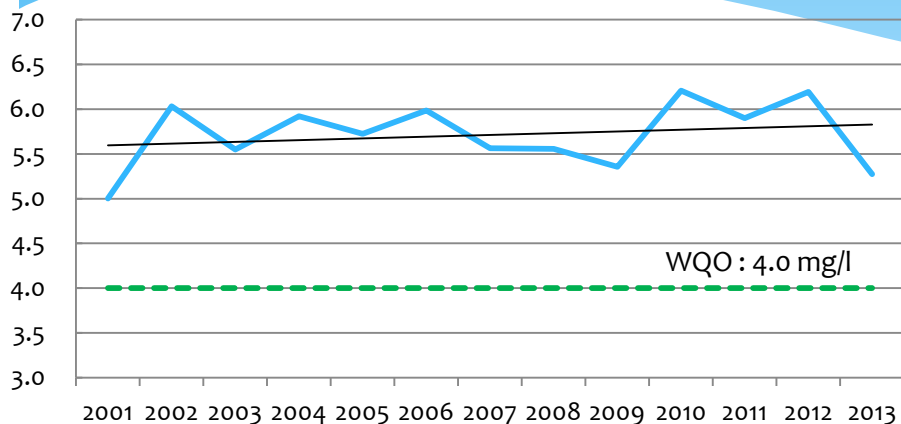
10 September 2014

Environmental Protection
Department

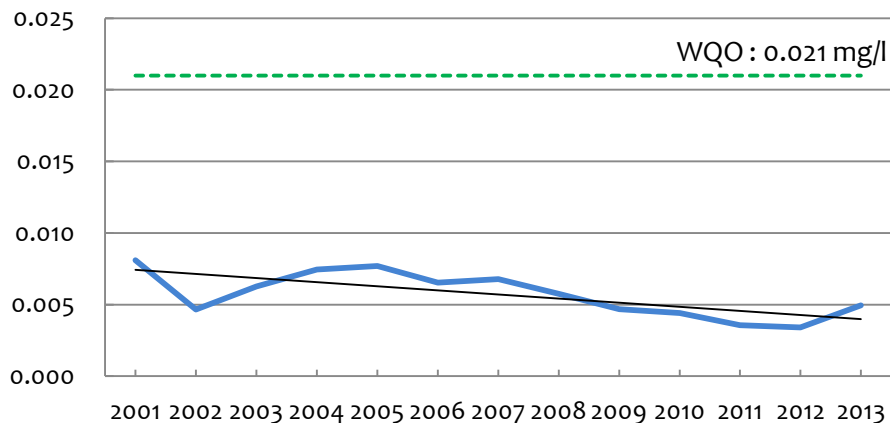
Water quality improvement in Tsuen Wan Bay

2001 – 2013

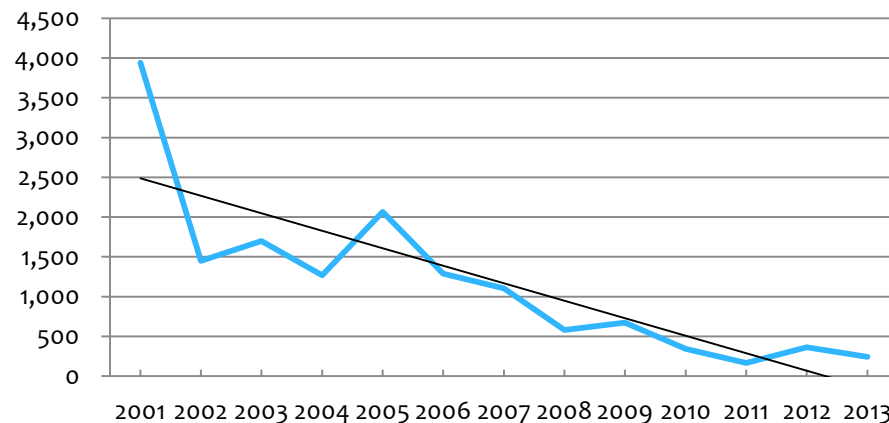
Dissolved Oxygen
(Annual depth average) (mg/l)



NH₃-N
(Annual depth average) (mg/l)



E. coli
(Annual depth geometric mean) (cfu/100ml)



Inter-departmental Task Force (2009)

Members

- * Environmental Protection Department
- * Drainage Services Department
- * Buildings Department
- * Food and Environmental Hygiene Department
- * Home Affairs Department

Other departments

- * Highways Department
- * Civil Engineering and Development Department
- * Marine Department

Inter-departmental Task Force

Terms of Reference

- * To define the conditions, criteria, and steps necessary for abatement of pollution loads to the storm water drain systems discharging to Tsuen Wan Bay;**
- * To map out an integrated action plan for achieving the goal;**
- * To monitor, coordinate, and expedite efforts being made towards reducing the pollution loads to the storm water drain system;**
- * To explore other alternate and or potential measures, if needed, for reaching the goal;**
- * To report regularly on progress to PS(Env)**

Inter-departmental Task Force Action Plan

- * **General problems identification – EPD/DSD/BD**
- * **Improvement of public sewers and storm water drain systems – DSD/EPD**
- * **Expedient connection (EC) rectifications within private premises – EPD/BD/DSD**
- * **Enforcement actions – EPD/BD/FEHD**
- * **Environmental hygiene control – FEHD/HyD**
- * **Public campaign – HAD/EPD**

Review study of the West Kowloon and Tsuen Wan Sewerage Master Plans (Completed 2010)

Three major sources of pollution discharge :

- * **public sewer cross connections (40%)**
- * **building-related expedient connections (30%)**
- * **non-point sources (30%)**

**e.g. rear lane activities,
street cleansing
inflow and infiltration**



Progress Made Since October 2009

* DSD

- rectified all public sewer cross connections cases identified
- Increased cleansing frequency for storm drain box culverts to twice a year starting 2014

* BD/EPD

- resolved 75% of all EC cases identified

* FEHD

- 337 prosecution cases against illegal food activities and storage of refuse in lanes and open space
- conducted 603 special inspections
- arranged 447 special cleansing

Intermediate and long term plans to further reduce pollution and resolve odour problems at the Tsuen Wan Bay waterfront

- * Tsuen Wan District Office (TWDO) to continue render assistance for outstanding EC cases to Owners Corporations (Ocs) wherever possible;**
- * DSD plans to install four dry weather flow interceptors (DWFIs) for intercepting polluted stormwater, mainly from non-point sources**
- * DSD plans to increase the capacity of local sewers**
- * DSD to conduct a trial on odour control using a PVC curtain to cover the Ma Tau Pa Road box culvert opening in end 2014**

Water Quality along the Tsuen Wan Waterfront

The End

