

# **Task Force on Harbourfront Developments in Kowloon, Tsuen Wan and Kwai Tsing**

---

For discussion  
on 9 November 2015

TFK/12/2015

## **Progress Update on the West Kowloon Cultural District**

### **PURPOSE**

The purposes of this paper are to update Members on the development progress of the West Kowloon Cultural District (“WKCD”) and to seek Members’ comments on the Artist Square Bridge (“ASB”).

### **BACKGROUND**

2. At the meeting of the Task Force on Harbourfront Developments in Kowloon, Tsuen Wan and Kwai Tsing (the “Task Force”) on 10 September 2014, the West Kowloon Cultural District Authority (“WKCDA”) reported on the progress of key developments within WKCD, including the Xiqu Centre, the Artist Square Development Area (“ASDA”), the ASB and the Park. A further briefing for the Task Force was held on 13 May 2015 on the draft WKCD Public Open Space Bylaw. The Public Open Space Bylaw will be submitted to the Legislative Council for vetting during the 2015-16 session. Progress of key development initiatives in WKCD since our last report is highlighted in the following paragraphs.

### **PROGRESS OF KEY DEVELOPMENT INITIATIVES IN WKCD**

#### ***Xiqu Centre***

3. Xiqu Centre will be a world-class arts venue specifically built for xiqu (Chinese opera) performance, and it will also be a centre for the production, education and research into this unique art form. Construction of the foundations has been completed and the main superstructure works commenced in December 2014. The Xiqu Centre is targeted for completion in 2017.

## **Task Force on Harbourfront Developments in Kowloon, Tsuen Wan and Kwai Tsing**

---

TFK/12/2015

### ***Artist Square Development Area (“ASDA”)***

4. The ASDA comprises M+, Lyric Theatre Complex, other arts and cultural facilities (“OACF”), retail/dining/entertainment (“RDE”) facilities as well as office/residential developments.

5. Works on M+, a new museum for visual art in Hong Kong, are well underway with the foundations completed and the main superstructure works contract awarded in September 2015. The venue is targeted for completion in 2018.

6. The Lyric Theatre Complex includes a 1 450-seat dance-focused Lyric Theatre, a 600-seat Medium Theatre, a 200-seat Studio Theatre, and a Resident Company Centre. The design for the Lyric Theatre Complex is underway and completion of the venue is expected to be around 2020.

7. In order to create a sense of place for the general public and to bring vibrancy to ASDA, the design team for the Park has been commissioned to carry out the open space design for ASDA, including the Artist Square and associated promenade. The scheme design is ongoing and completion of the public open space is also expected to be around 2020.

8. Schematic designs for OACF and RDE facilities within ASDA are being prepared and the business case will be reviewed in due course. The planned completion of the above facilities is around 2020.

### ***Artist Square Bridge (“ASB”)***

9. The ASB will serve as a pedestrian link between the MTR Kowloon Station/ Elements shopping mall and the Artist Square of ASDA in WKCD, with further connections to the Park and the harbourfront for the visitors to enjoy the Promenade. It will enhance accessibility to the harbourfront by providing direct and barrier-free access. The ASB will provide a “sense of arrival” to WKCD visitors. The ASB is currently at the schematic design stage. Subject to the progress of design, site investigation and gazetting, the construction of ASB is targeted to commence in the third quarter of 2016 at

## **Task Force on Harbourfront Developments in Kowloon, Tsuen Wan and Kwai Tsing**

---

TFK/12/2015

the earliest.

10. The form of the ASB is created by a very simple process of using a series of equal-sized, identical rib sections but with each rib very slightly rotated relative to its immediate neighbours. Uniformly-sized glass louvres with gaps are fixed between the ribs to achieve a light and elegant bridge design. The glass louvres can give visitors great views to the sides and up to the Kowloon and WKCD skylines, as well as optimize the use of natural daylight and hence reduce electricity consumption. As the proposed ASB is not immediately fronting the harbour, the proposed ASB will not have any adverse effect on the harbour view. The design of ASB is shown in **Annex A**.

### ***The Park***

11. The design concept of the Park was presented to the Task Force on 10 September 2014. Construction of Arts Pavilion inside the Park is underway with completion targeted in 2016. The Park, including the Black Box, is planned with phased completion starting from 2017.

12. In order to maintain partial opening of the Park area for public enjoyment throughout the development period, the Nursery Park has been built. This temporary facility comprises the tree nursery established on site to nurture mature trees for future planting in the Park, as well as a section of the existing West Kowloon Waterfront Promenade with performance space and a cycle path. There are a number of versatile lawn areas surrounded by trees and plants. These spaces are suitable for both leisure pursuits and open-air events. The Nursery Park opened to the public in July 2015 and the first of a series of public events, Freespace Happening, took place on 9 August 2015.

13. The Nursery Park provides a good opportunity for testing out the proposed park management philosophy, Bylaw and guidelines aimed at a flexible, user-friendly mode of park management. Upcoming programmes, including the recurrent Freespace Happening, aim to reach out to the youth community, encourage public participation, groom new partners and provide a platform for the artistic development.

## **Task Force on Harbourfront Developments in Kowloon, Tsuen Wan and Kwai Tsing**

---

TFK/12/2015

### ***Proposed Marine Access Points***

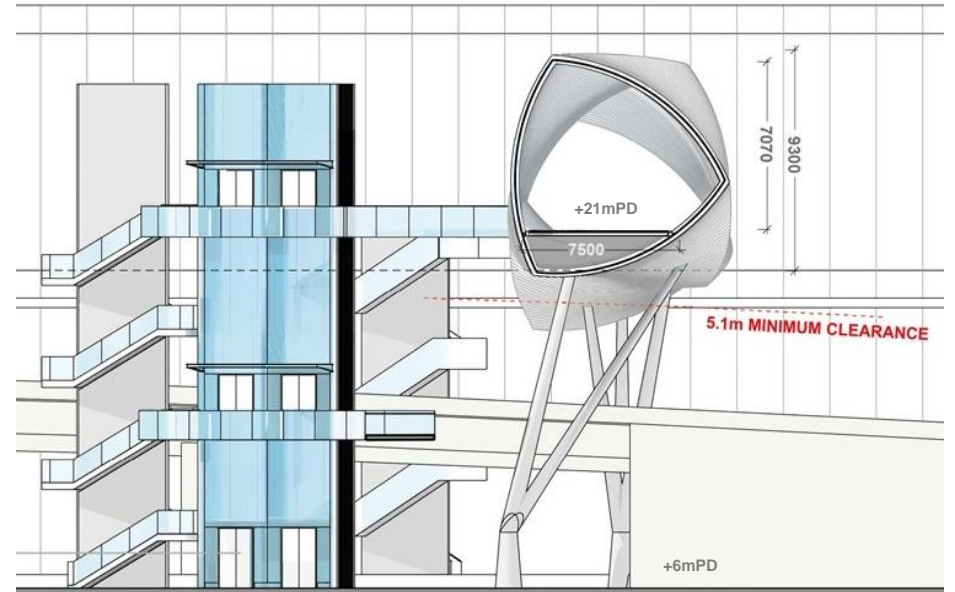
14. Currently, there are three existing landing steps within the boundary of WKCD shown in the approved Development Plan as depicted in **Annex B**. The eastern landing steps currently allocated to Fire Services Department serve as a fireboat pier facility, whereas the central landing steps are located near the MTR Corporation Limited's barging facilities used for the disposal of excavated materials of the Guangzhou-Shenzhen-Hong Kong Express Rail Link project by sea. Neither of these two existing landing steps is accessible by the public. In the northern edge of the WKCD are the public landing steps at the New Yau Ma Tei Typhoon Shelter. These steps are in active use providing public access for the transportation of goods and passengers. Water transport services facilitating the Freespace Fest 2014, a 2-day outdoor festival curated by WKCDA, also made use of the said public landing steps.

15. WKCDA proposes to incorporate two marine access points under the land grant as shown in **Annex B**. It is proposed that WKCDA will take up the management responsibility of the concerned area to facilitate water transport and water tour services to be operated by third party providers. The exact locations of the marine access points will be subject to the Marine Traffic Impact Assessment being undertaken by WKCDA, consultation with stakeholders and approval from relevant government departments.

### **ADVICE SOUGHT**

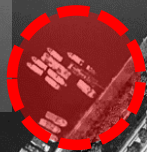
16. Members are invited to note the progress of the WKCD development and provide comments on the ASB and other development initiatives involved.

**West Kowloon Cultural District Authority  
November 2015**



**Existing landing steps 1**

Marine access right at New Yau Ma Tei Typhoon Shelter to be sought



**Existing landing steps 2**

Marine access right to be sought



**Existing landing steps 3**

Existing pier for fireboat shall be maintained after relocation



Existing landing steps



Proposed marine access points sought under the WKCD land grant