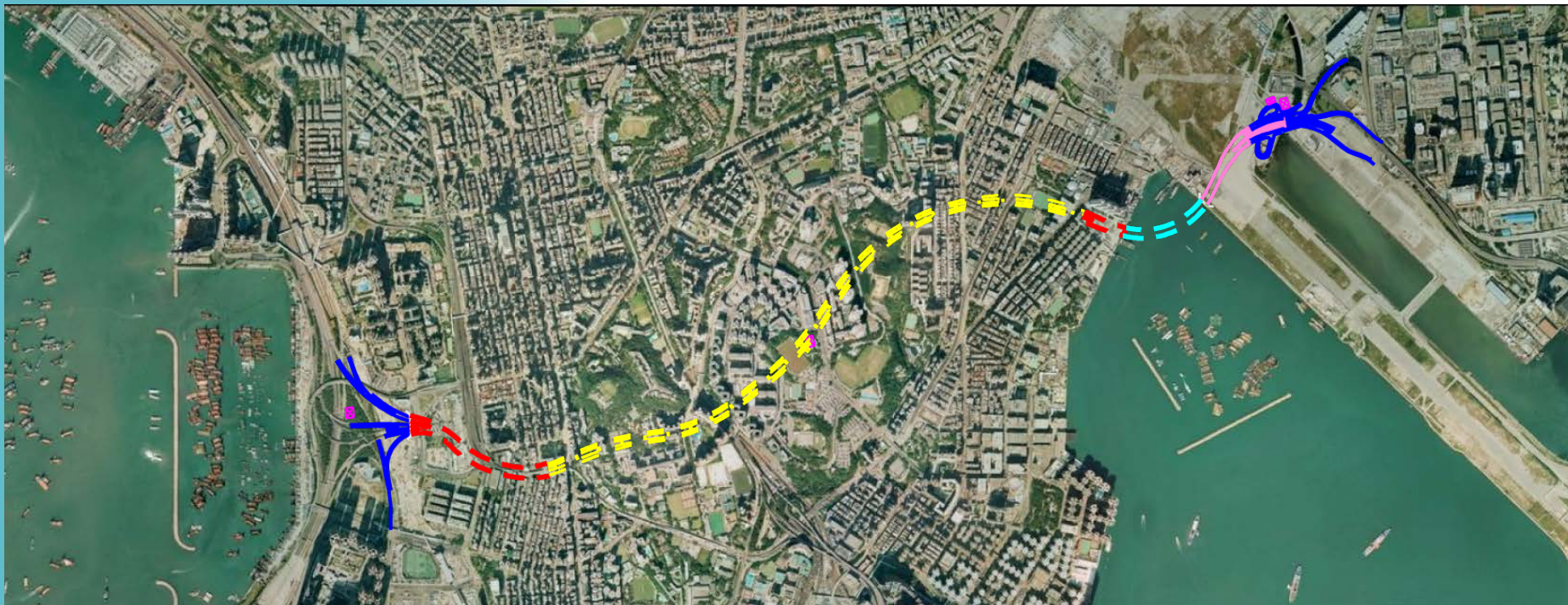


# Central Kowloon Route



**Task Force on Harbourfront Developments in Kowloon,  
Tsuen Wan and Kwai Tsing**

**16 May 2013**

# Consultations

- Harbourfront Commission on 7 January 2013
- Informal workshop on 5 February 2013
  
- Comments
  - Open the landscape deck for public enjoyment
  - Pedestrian circulation
  - Enhance walking experience



# Yau Ma Tei Landscape Deck



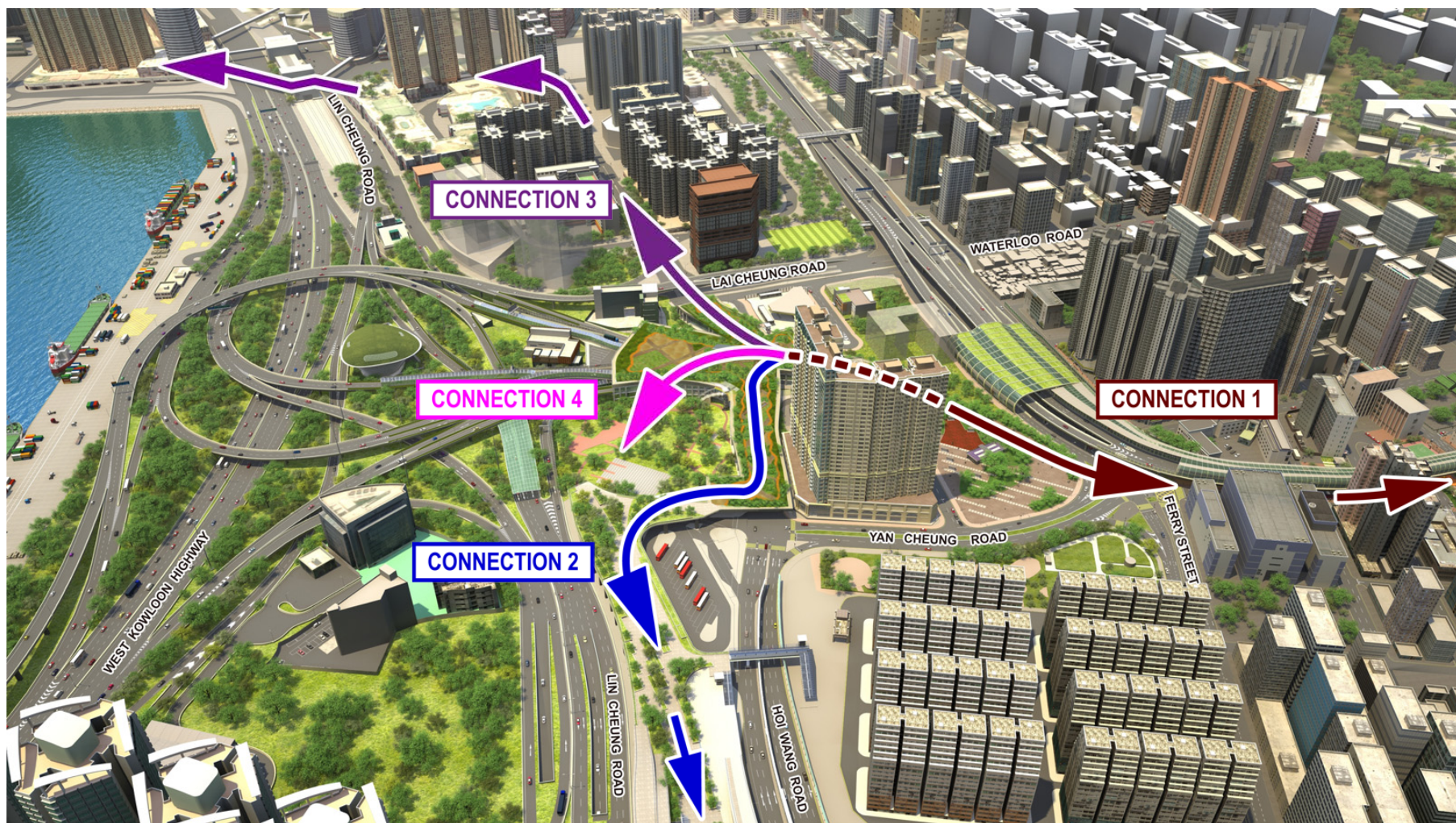
# Pedestrian Circulation

- Connection 1 – Connected to the open space on the western side of Ferry Street
- Connection 2 – Connected to Express Rail Link landscape deck
- Connection 3 – Connected to the existing ground level pedestrian facilities at the junction of Hoi Wang Road and Lai Cheung Road
- Connection 4 – Connected to the proposed open space on the south of the CKR mainline and the west of Hoi Wang Road

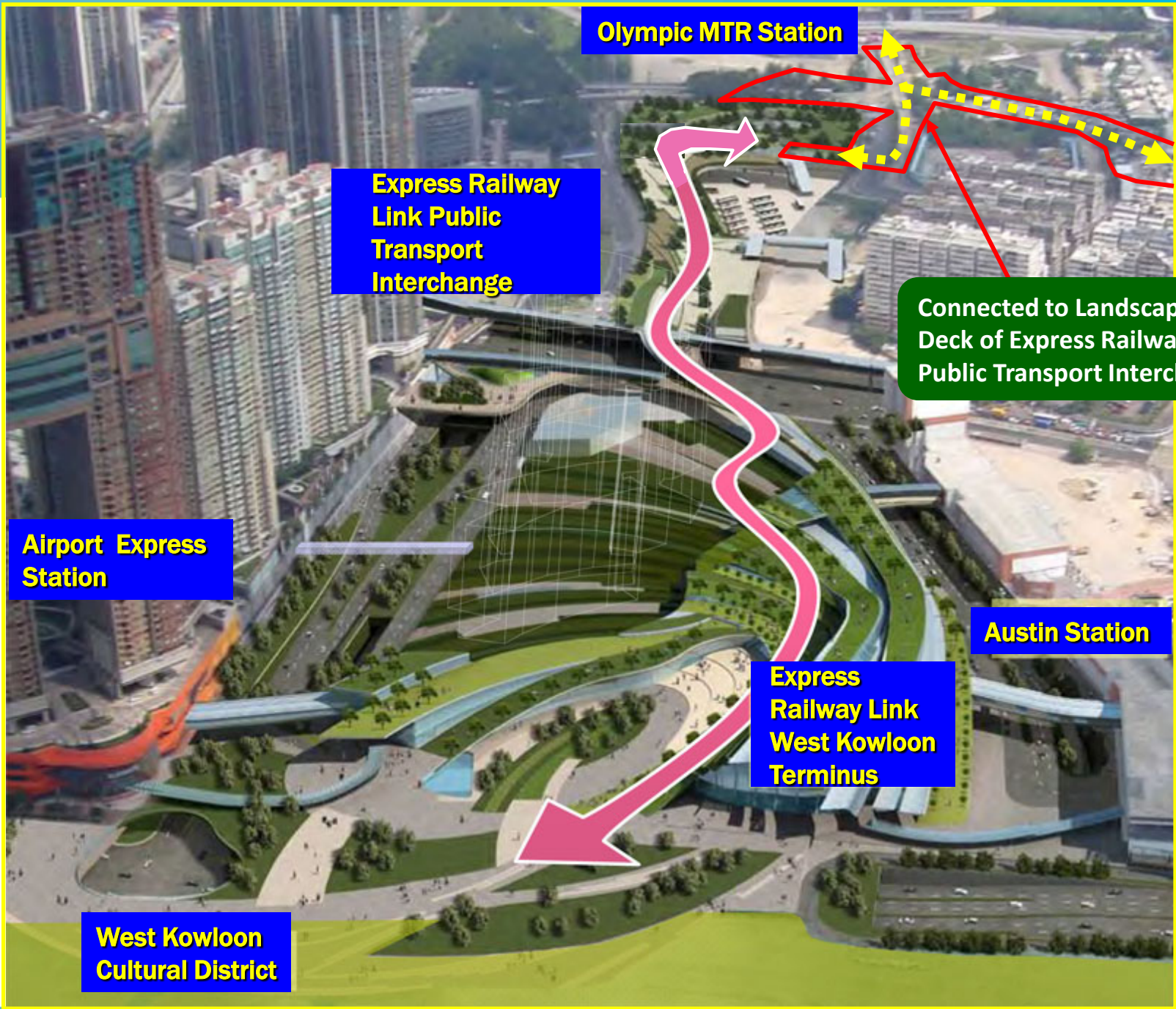
**Forming a pedestrian route connecting West Kowloon Cultural District in the south and the waterfront of Tai Kok Tsui in the north**



# Yau Ma Tei Landscape Deck







Olympic MTR Station

Express Railway Link Public Transport Interchange

Connected to Landscape Deck of Express Railway Link Public Transport Interchange

Airport Express Station

Austin Station

Express Railway Link West Kowloon Terminus

West Kowloon Cultural District



# Walking Experience

- Integrated landscape design
- Provision of recreational facilities

