

Renovation of Hong Kong Museum of Art

May 2013



General Information

- Re-provisioned in 1991 (22 years old)
- Less than 7,000 sq. m. exhibition area
- Gallery ceiling height ranges from 3.5 – 4.5m



Uniform color scheme
with Hong Kong
Cultural Centre
Complex

Solid façade

Narrow passageway in
between Harbour

No activity to attract or
engage public





Low ceiling height

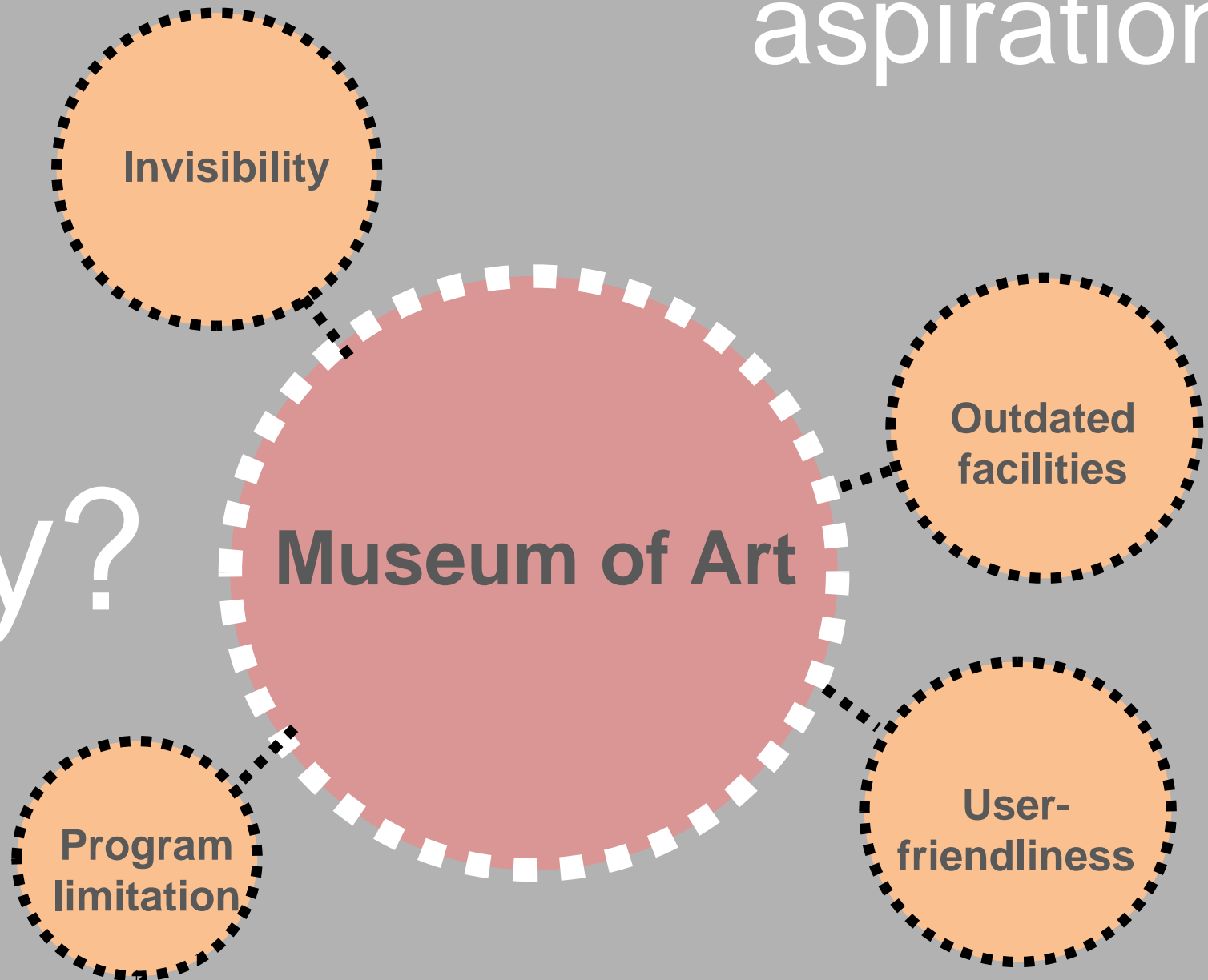
Limited gallery
space



Limiting program

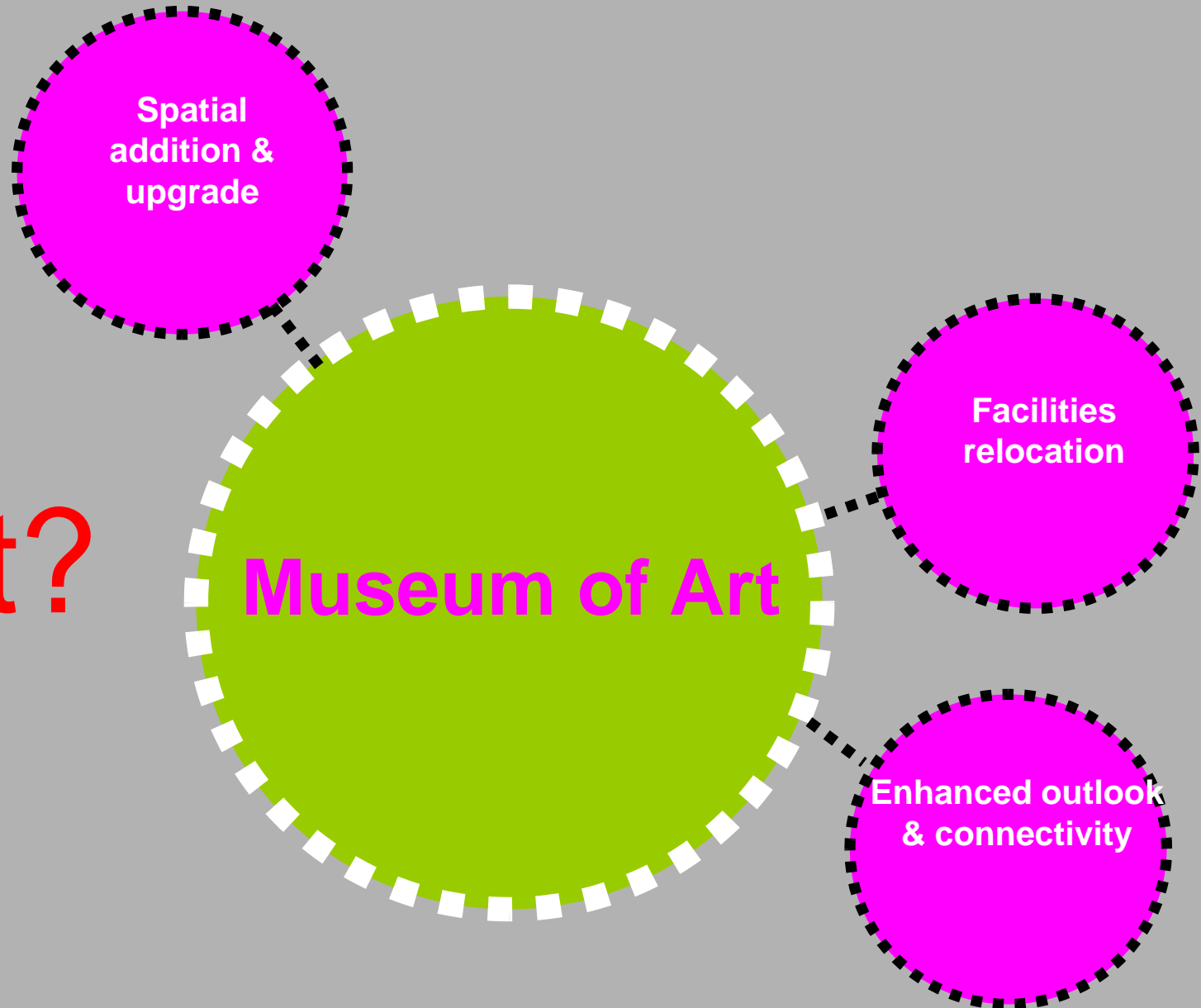
Inadequacies & public aspirations

Why?



Renovation scope

What?



Preserving Victoria Harbour

NO Reclamation



Stakeholder Engagement



Sustainable Development



social



artistic



economic



environmental

Integrated Planning

Cultural + Tourist + Recreation + Retail

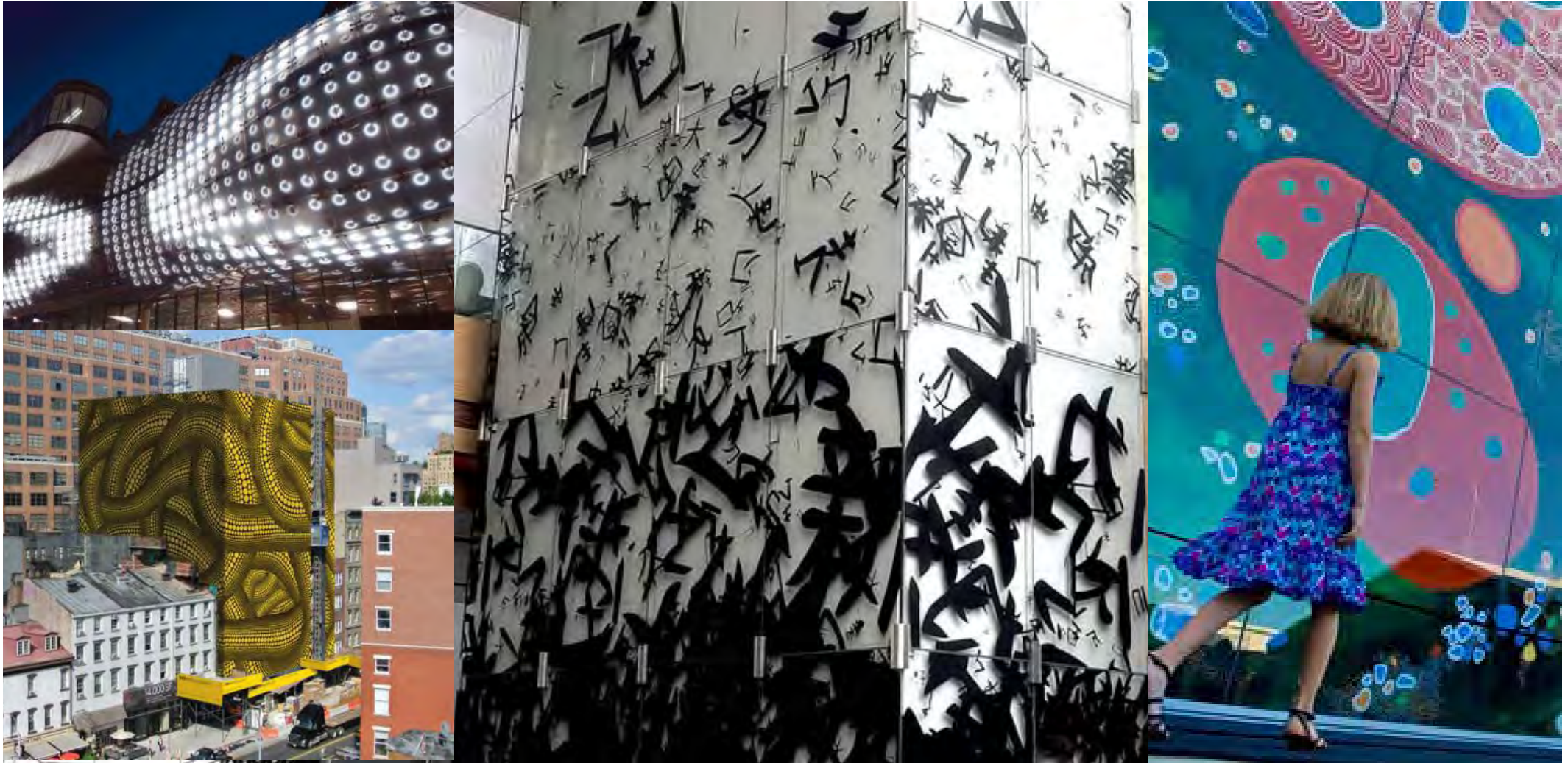


Proactive Harbour Enhancement



Iconic Glass Design

Proactive Harbour Enhancement



Beautification of Vent Shaft

Vibrant Harbour



Open display



Open activities

Vibrant Harbour

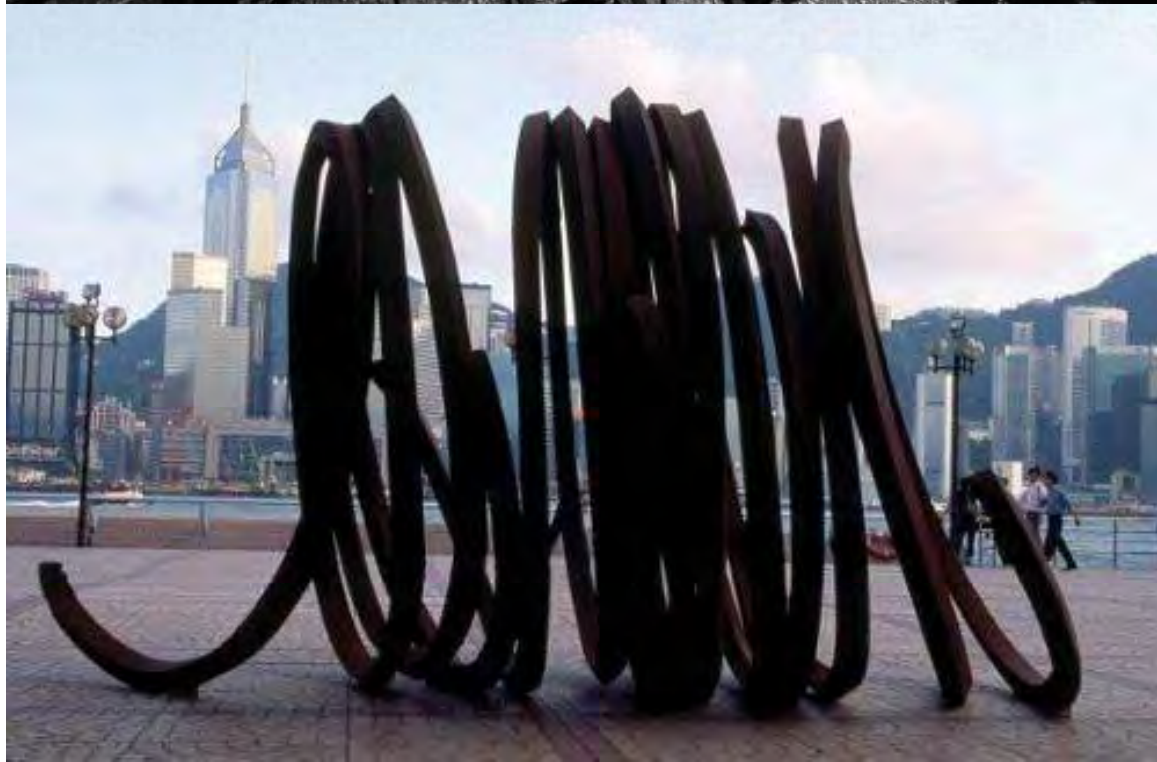




Vibrant
Crossover



Harbour
Programming



Public Enjoyment



Public Enjoyment



Renovation of the Hong Kong Museum of Art

Programme No:- 066RE

**Task Force on Harbourfront Developments
in Kowloon, Tsuen Wan and Kwai Tsing**



Leisure and Cultural Services Department



Architectural Services Department

May 2013

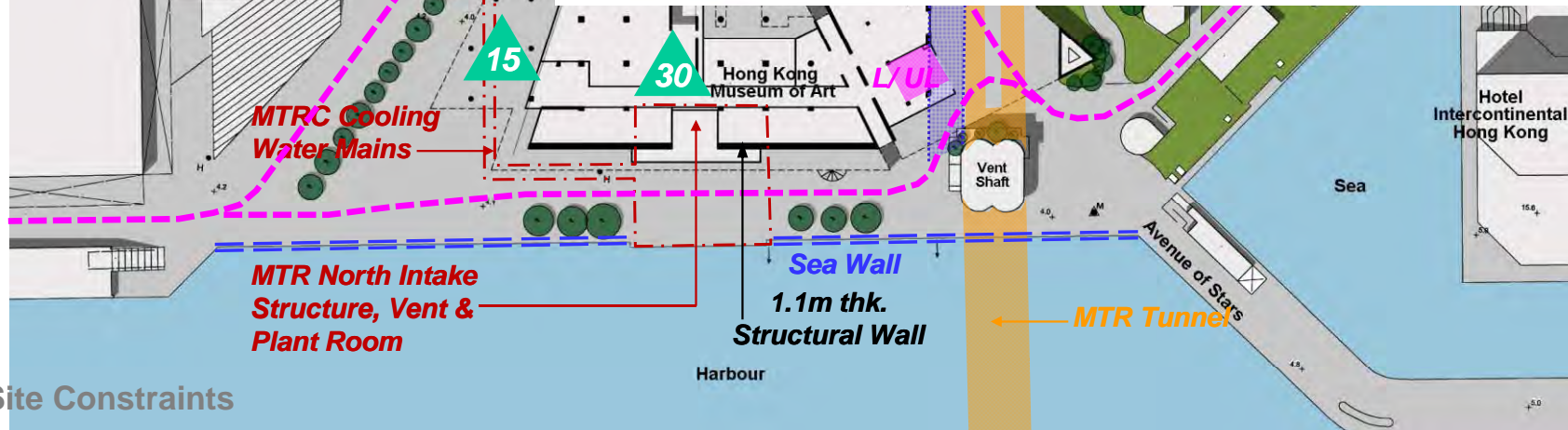
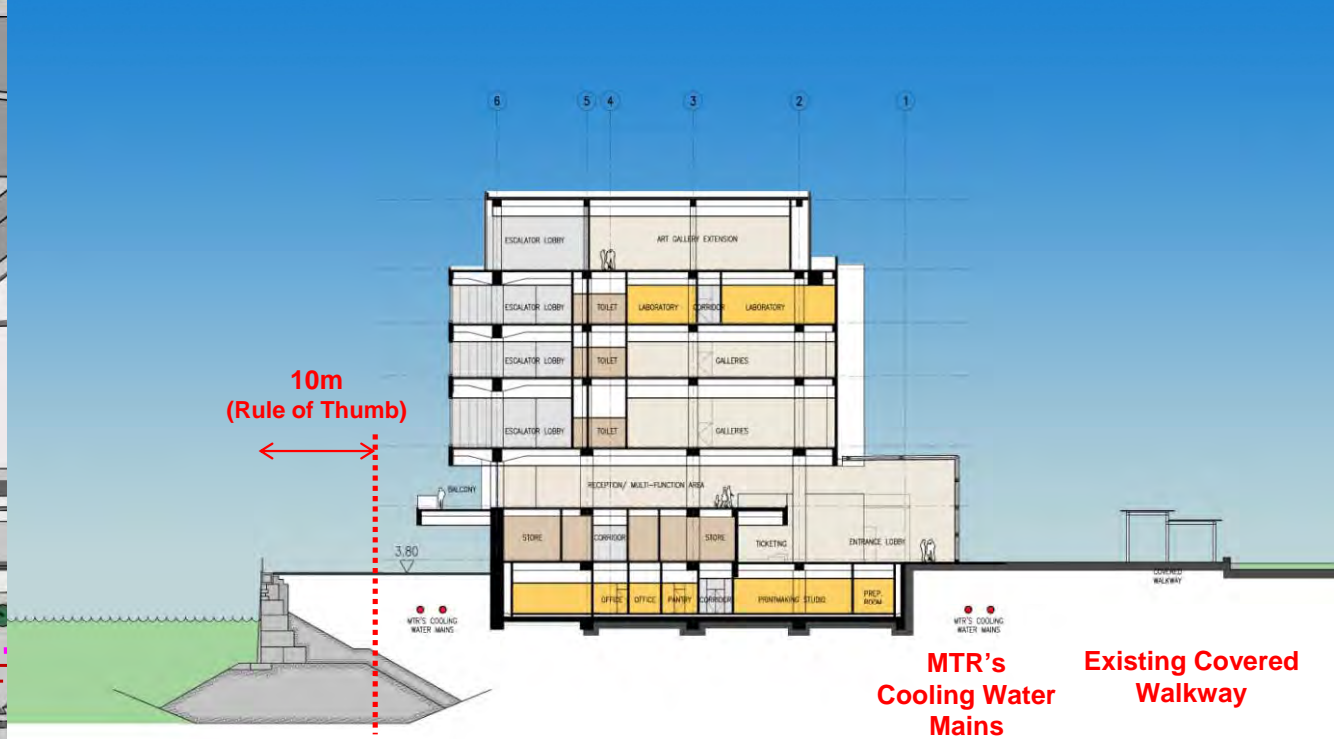
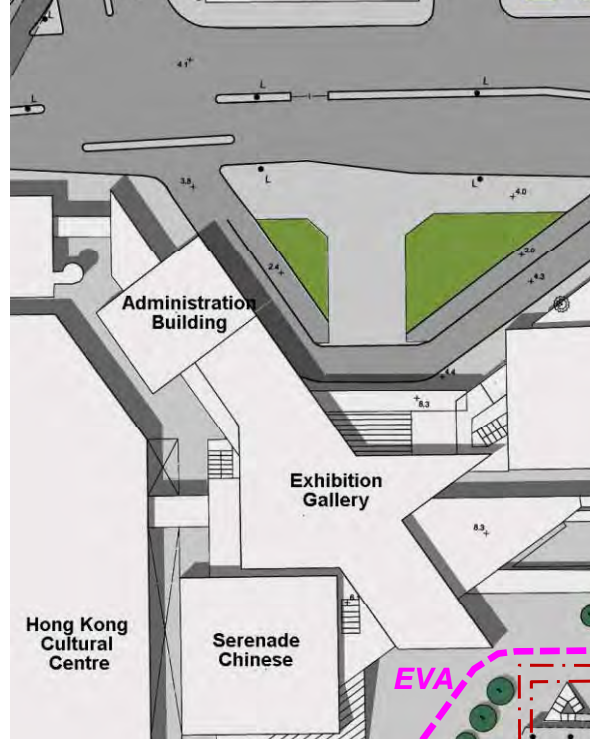
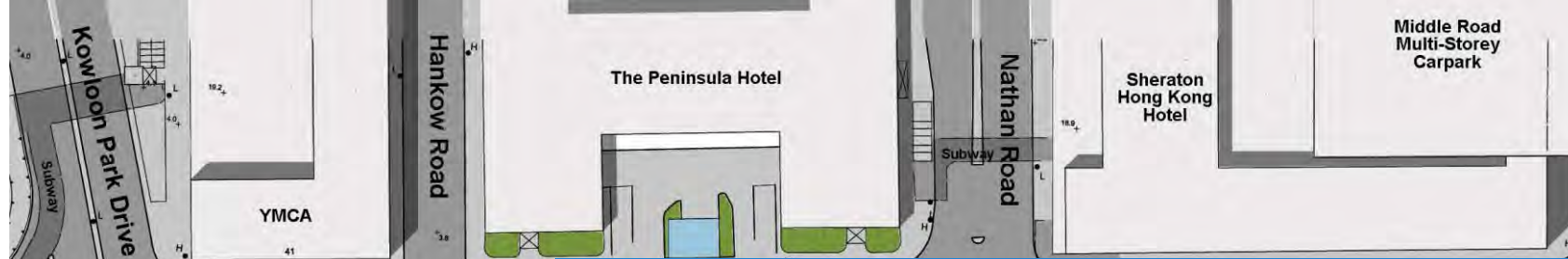


Aerial Photo of Tsim Sha Tsui Cultural Complex

Renovation of the Hong Kong Museum of Art

Task Force on Harbourfront Developments in Kowloon, Tsuen Wan and Kwai Tsing

Site Constraints



Existing Site Constraints

**The Renewal –
Hong Kong Museum of Art**

The proposal includes:-

1. Refurbishing the existing building

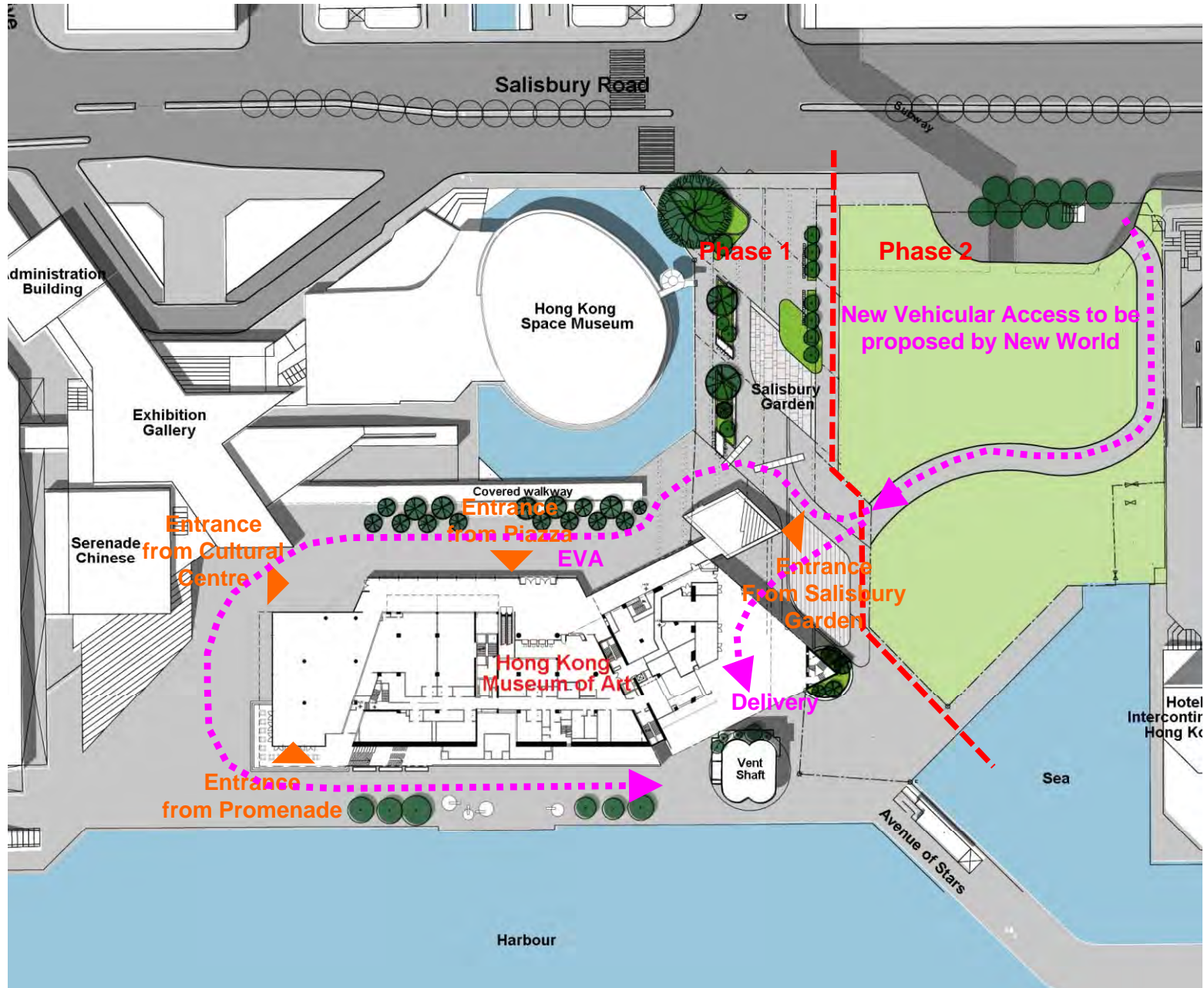
2. Improve **Site Access**

3. Improve **Connectivity**

4. Create **Visual Impact**

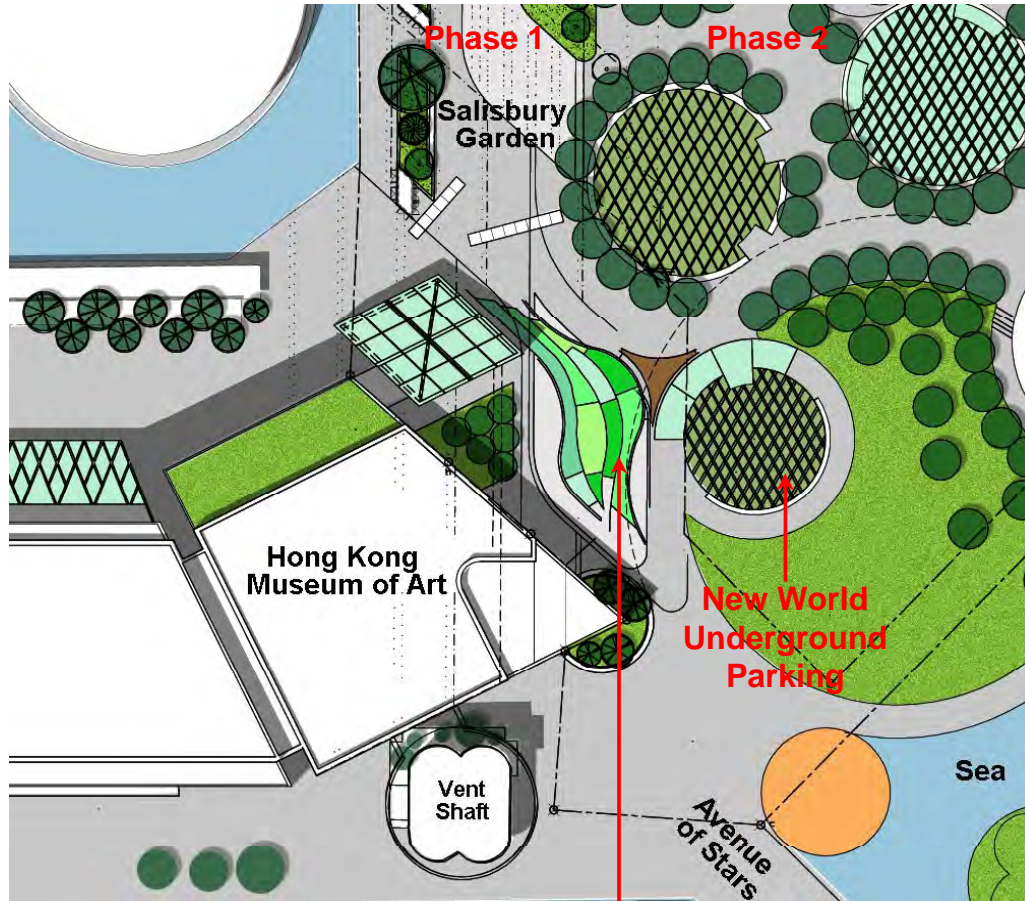
5. Create **New Art Spaces**

Site Access

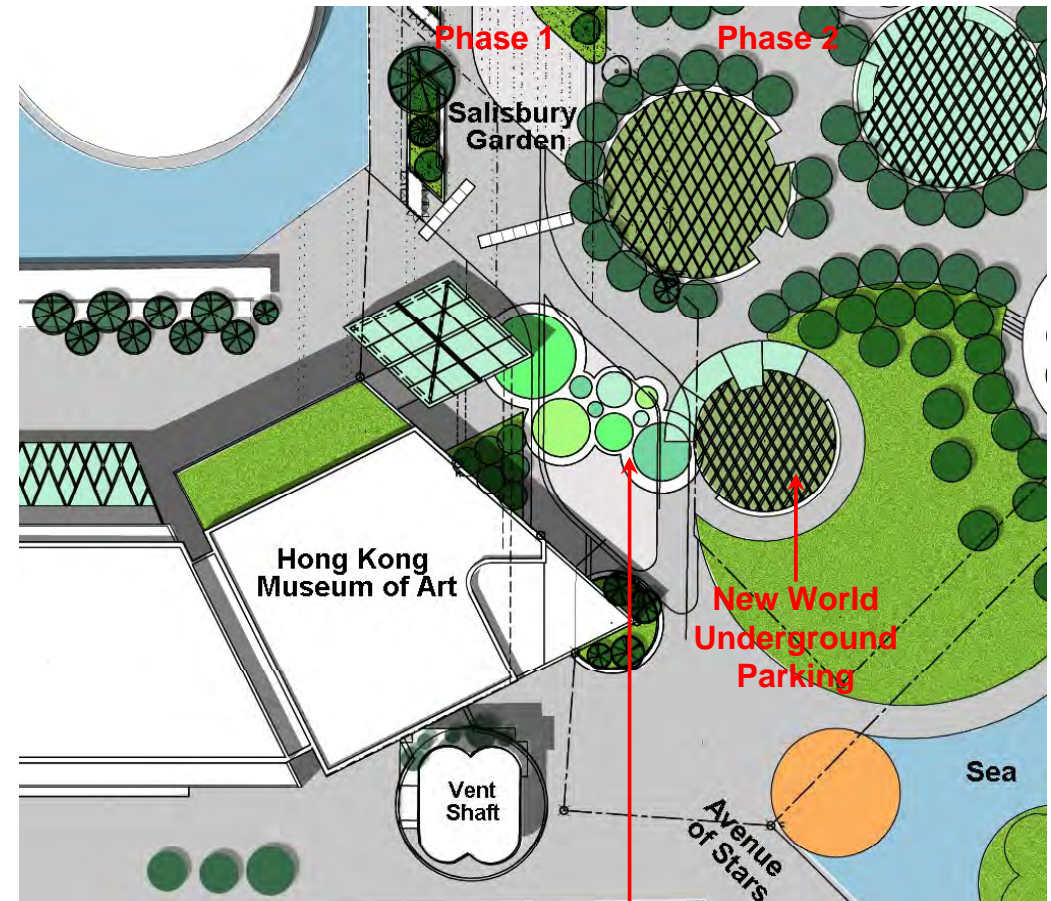


Connectivity to New World Underground Parking

Alternatives for the covered walkway linkage



Canopy Linkage
to be added



Canopy Linkage
to be added

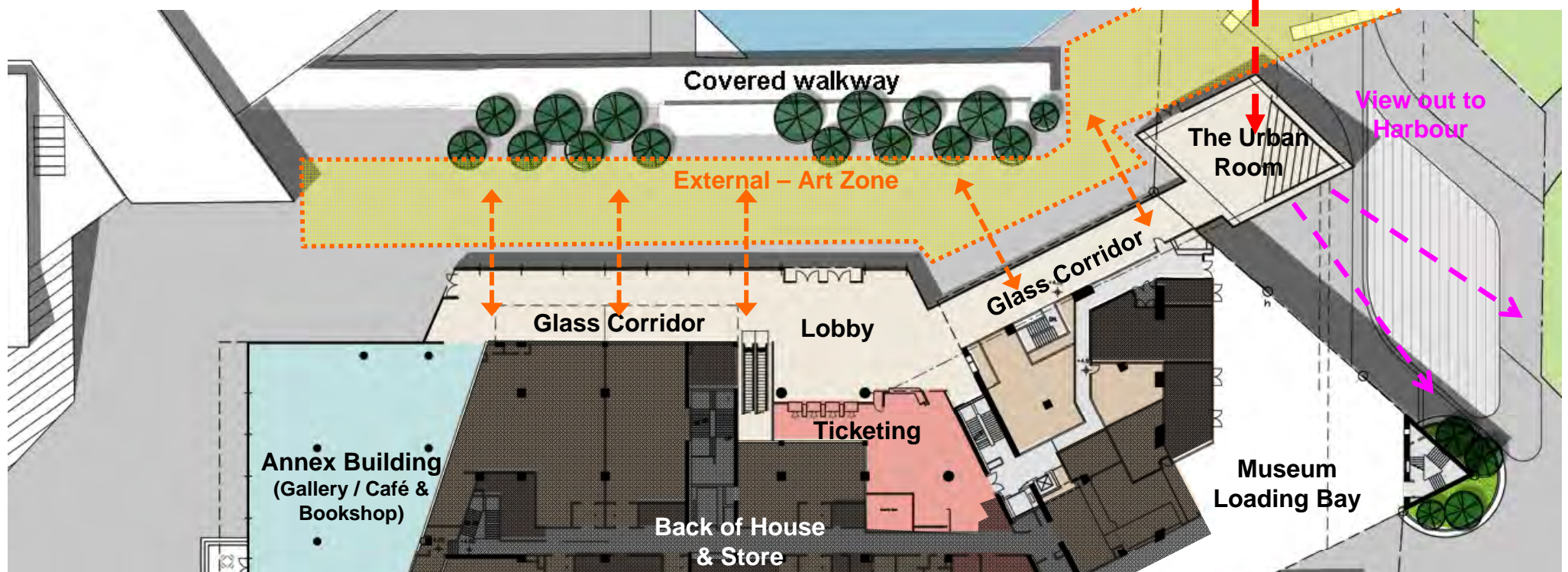


Examples of Canopies

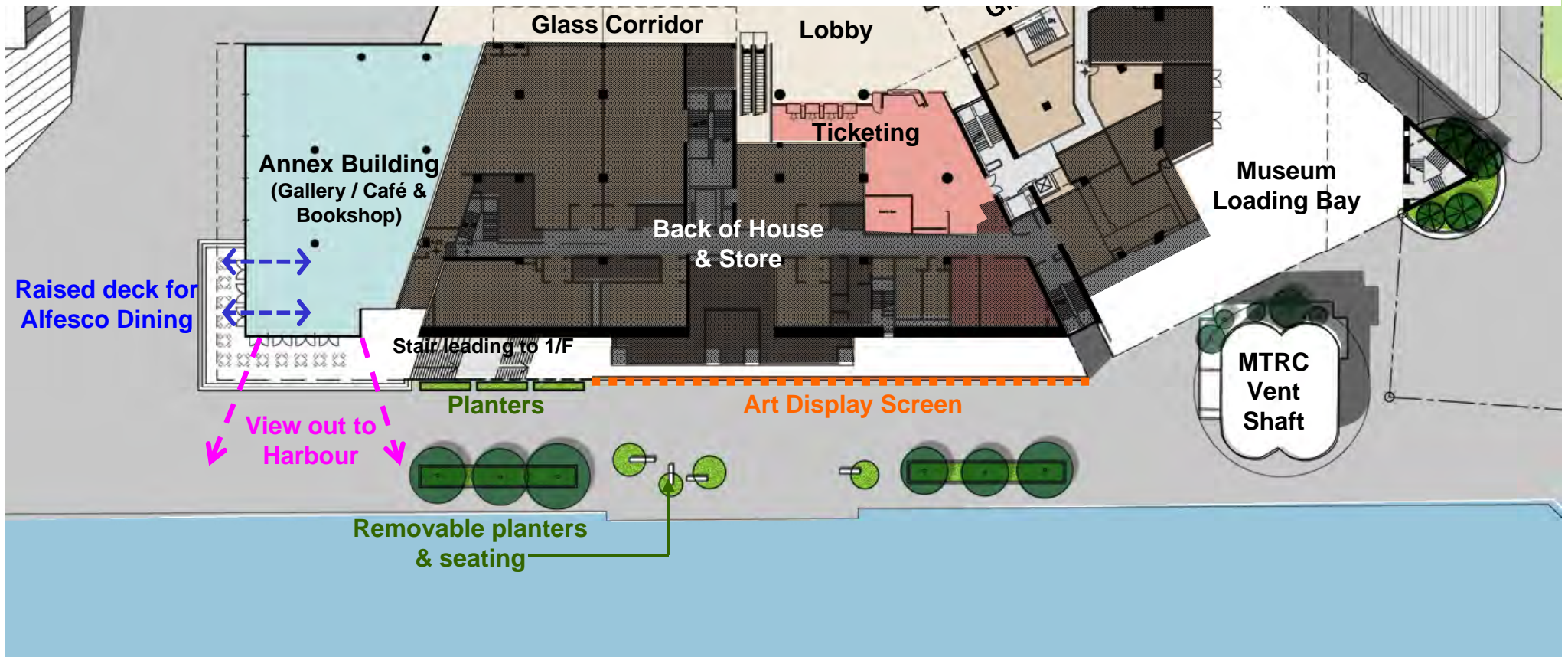


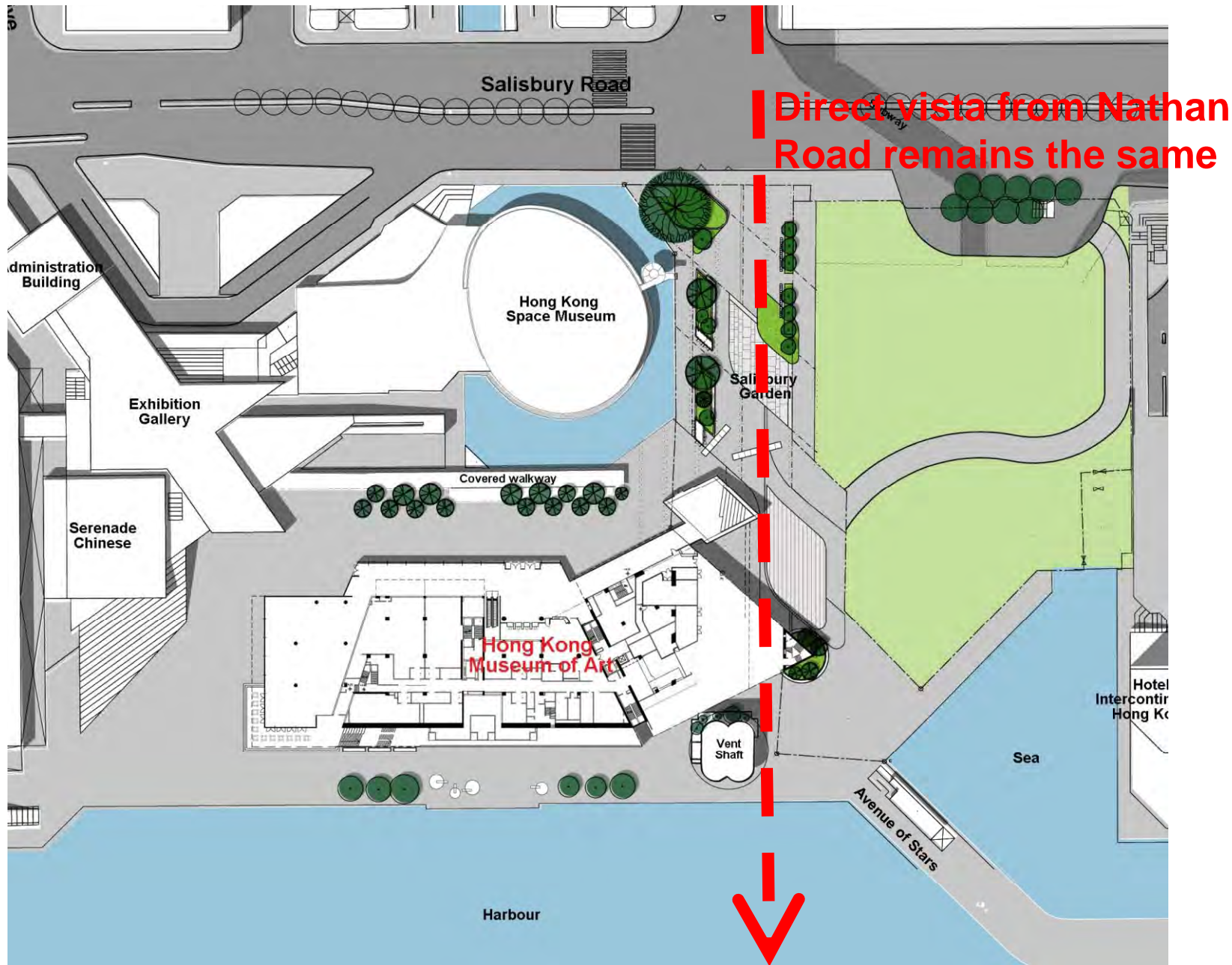
Connectivity to Piazza

Visual linkage from Salisbury Road – to serve as an “announcement”



Connectivity to Harbour





Retaining the vista from Nathan Road

Renovation of the Hong Kong Museum of Art

Task Force on Harbourfront Developments in Kowloon, Tsuen Wan and Kwai Tsing

Maintaining the vista from Nathan Road



View from Salisbury Road as existing



View from Salisbury Road after Renovation of Salisbury Garden



View from Salisbury Road with the proposed glass Urban Room

Visual Impact (View from Salisbury Garden, towards glass extension)



Renovation of the Hong Kong Museum of Art

Task Force on Harbourfront Developments in Kowloon, Tsuen Wan and Kwai Tsing

May 2013



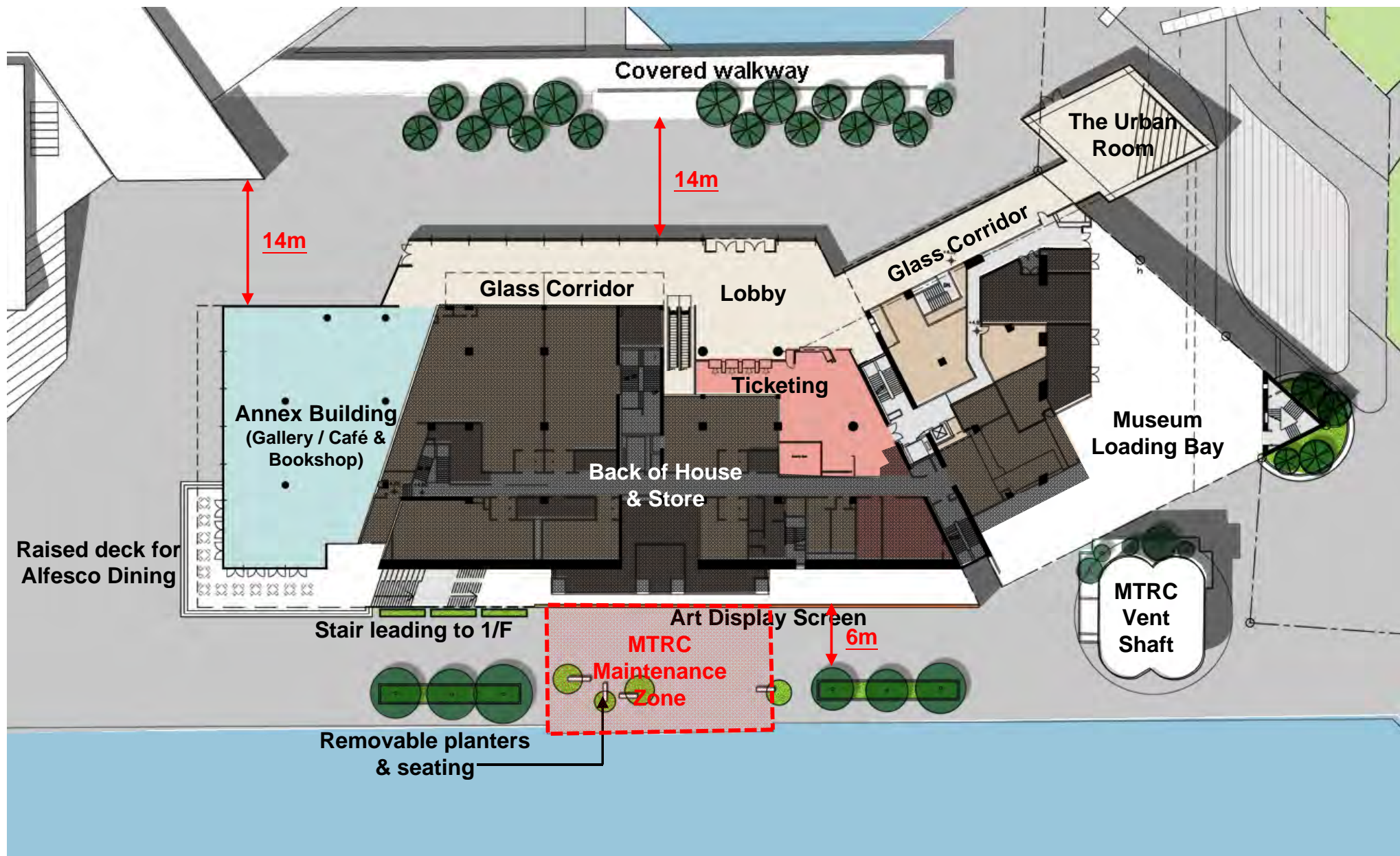
Artist's Impression – View from Avenue of Stars

Renovation of the Hong Kong Museum of Art

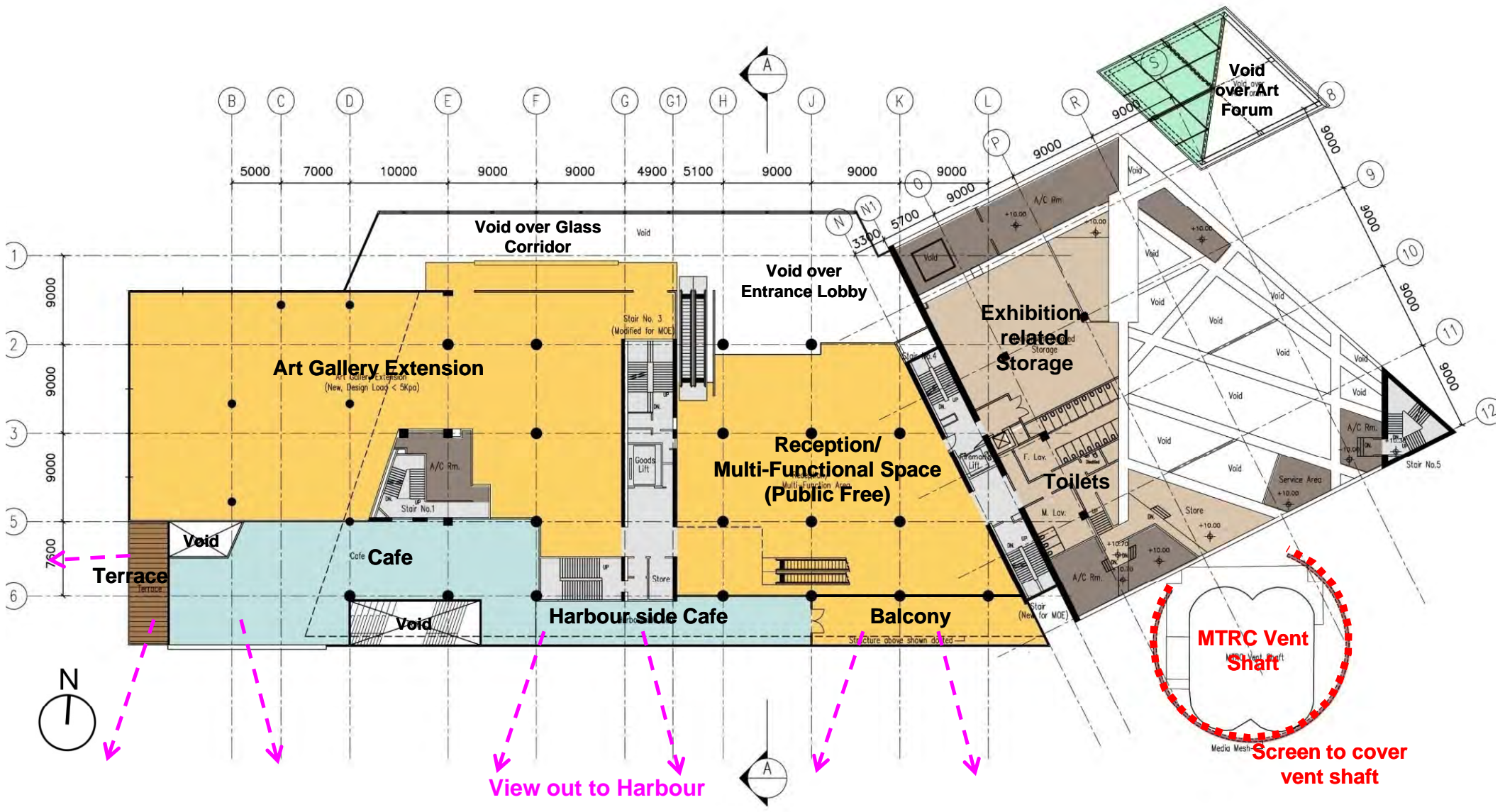
Task Force on Harbourfront Developments in Kowloon, Tsuen Wan and Kwai Tsing

May 2013

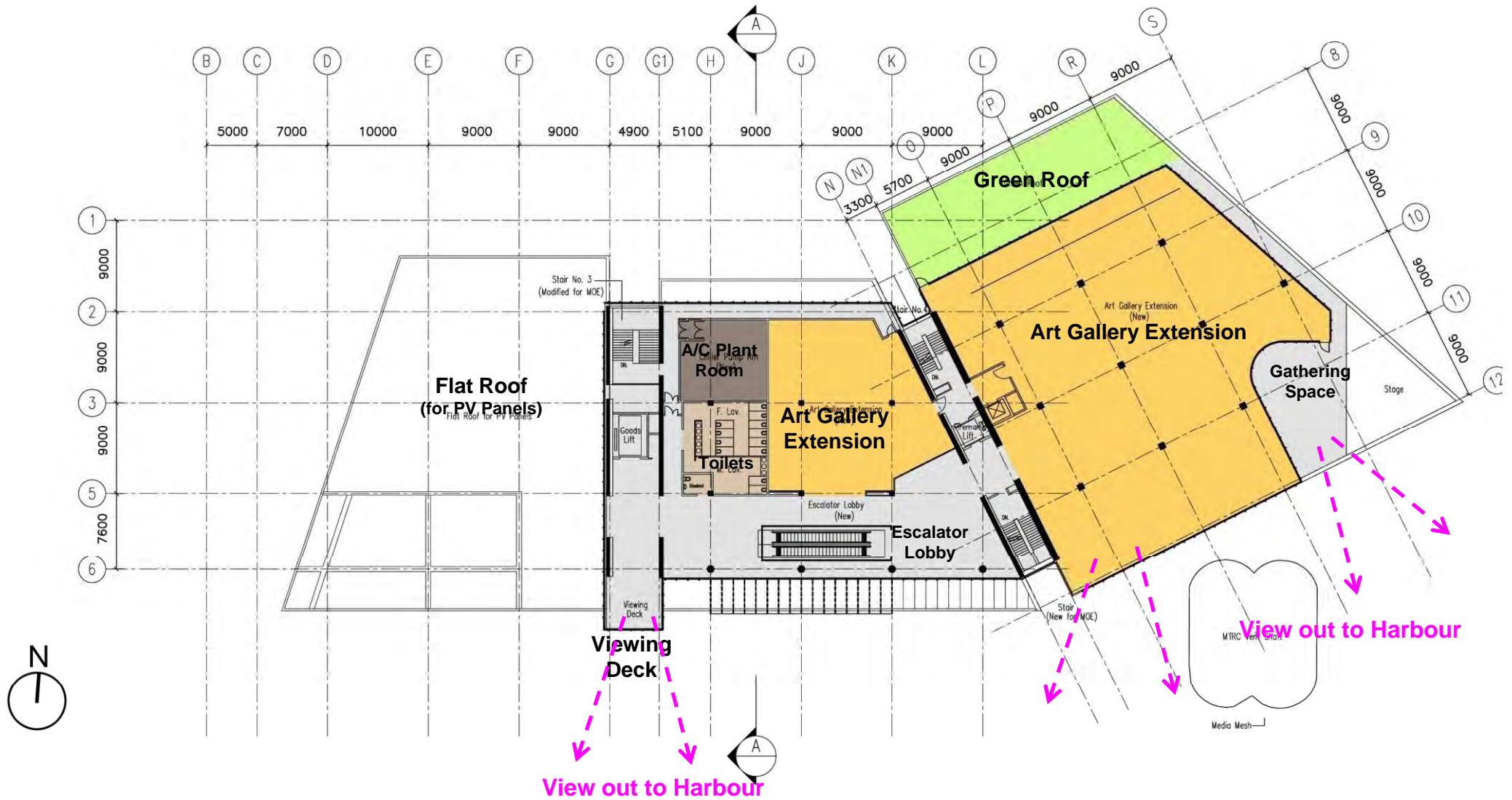
New Art Space



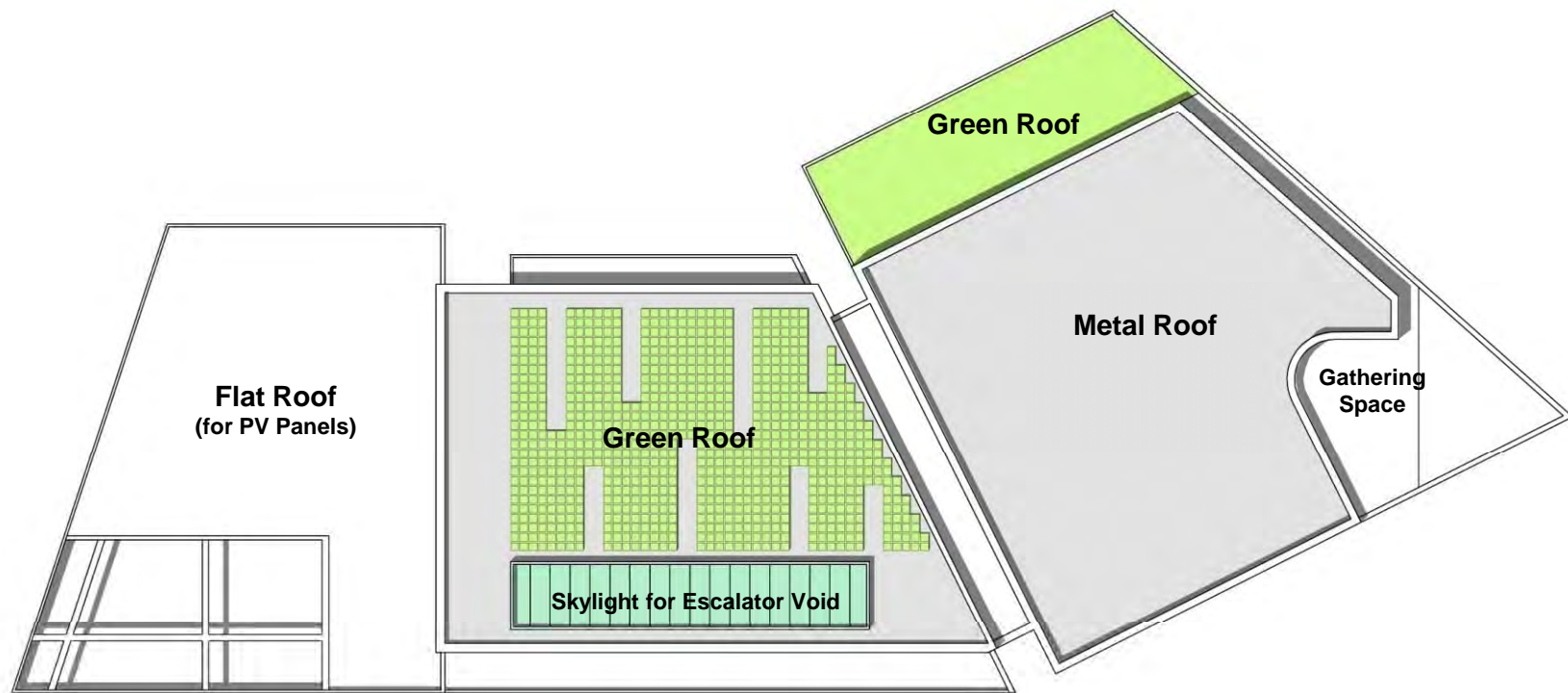
Layout Alteration – G/F (Proposed)



Layout Alteration – 1/F (Proposed)



Layout Alteration – R/F (Proposed)



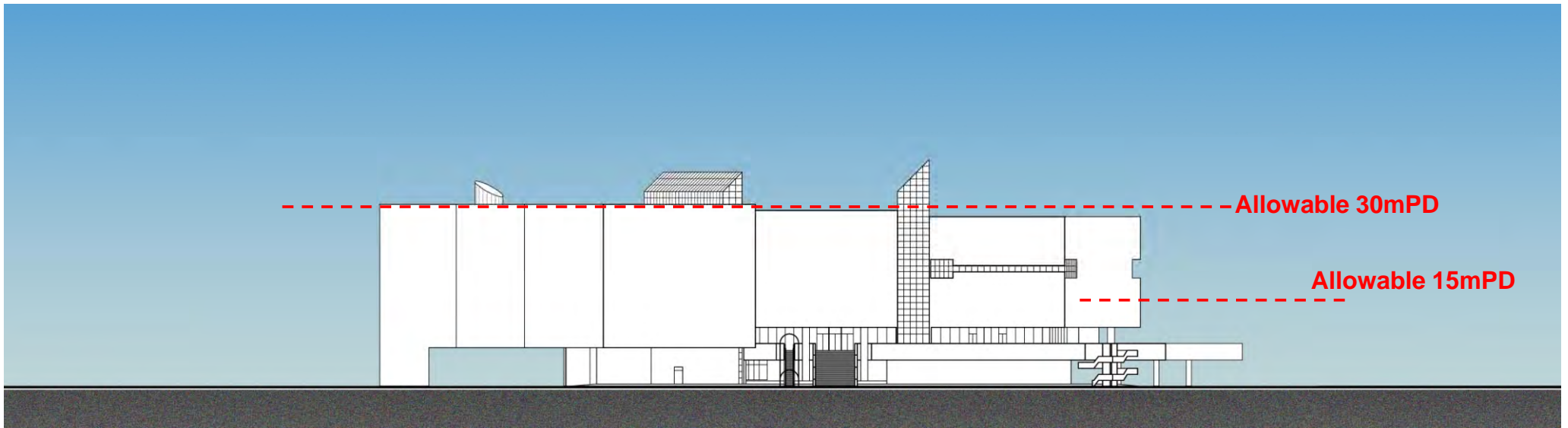
Layout Alteration – UR/F (Proposed)

Renovation of the Hong Kong Museum of Art

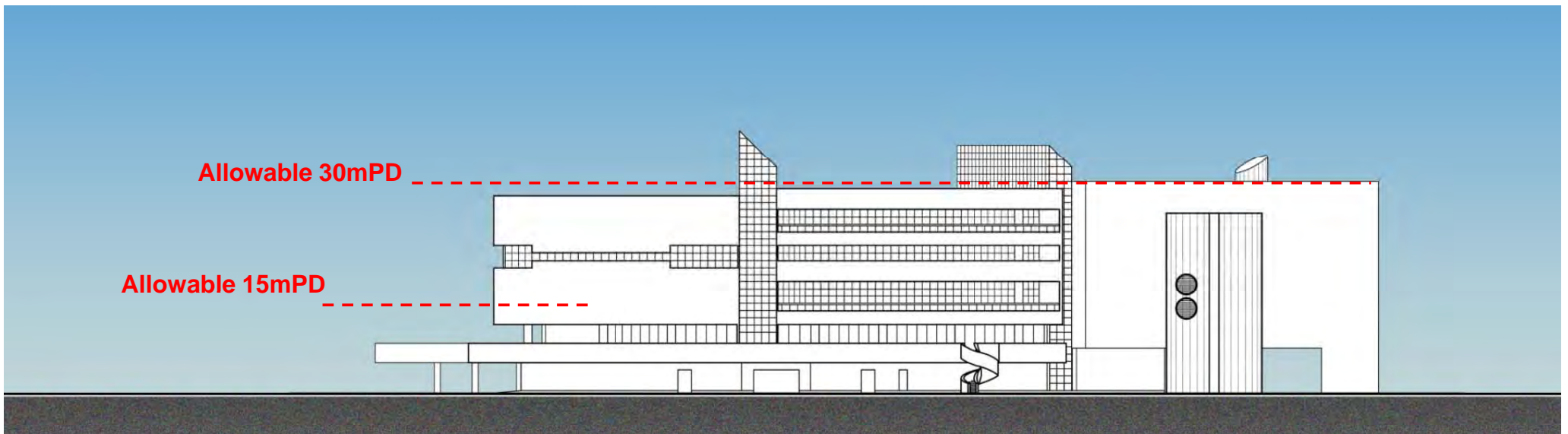
Task Force on Harbourfront Developments in Kowloon, Tsuen Wan and Kwai Tsing

May 2013

Height Restriction



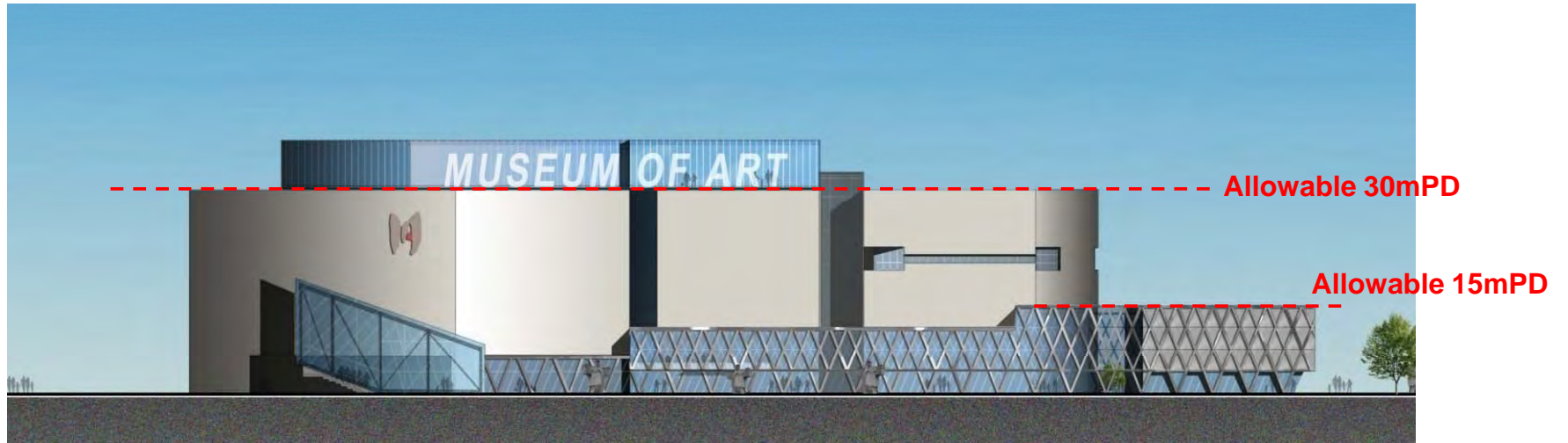
North Elevation – facing Museum Courtyard (Existing)



South Elevation – facing Harbourfront (Existing)

Renovation of the Hong Kong Museum of Art

Task Force on Harbourfront Developments in Kowloon, Tsuen Wan and Kwai Tsing



North Elevation – facing Museum Courtyard (Proposed)



South Elevation – facing Harbourfront (Proposed)



Hong Kong
Museum of Art

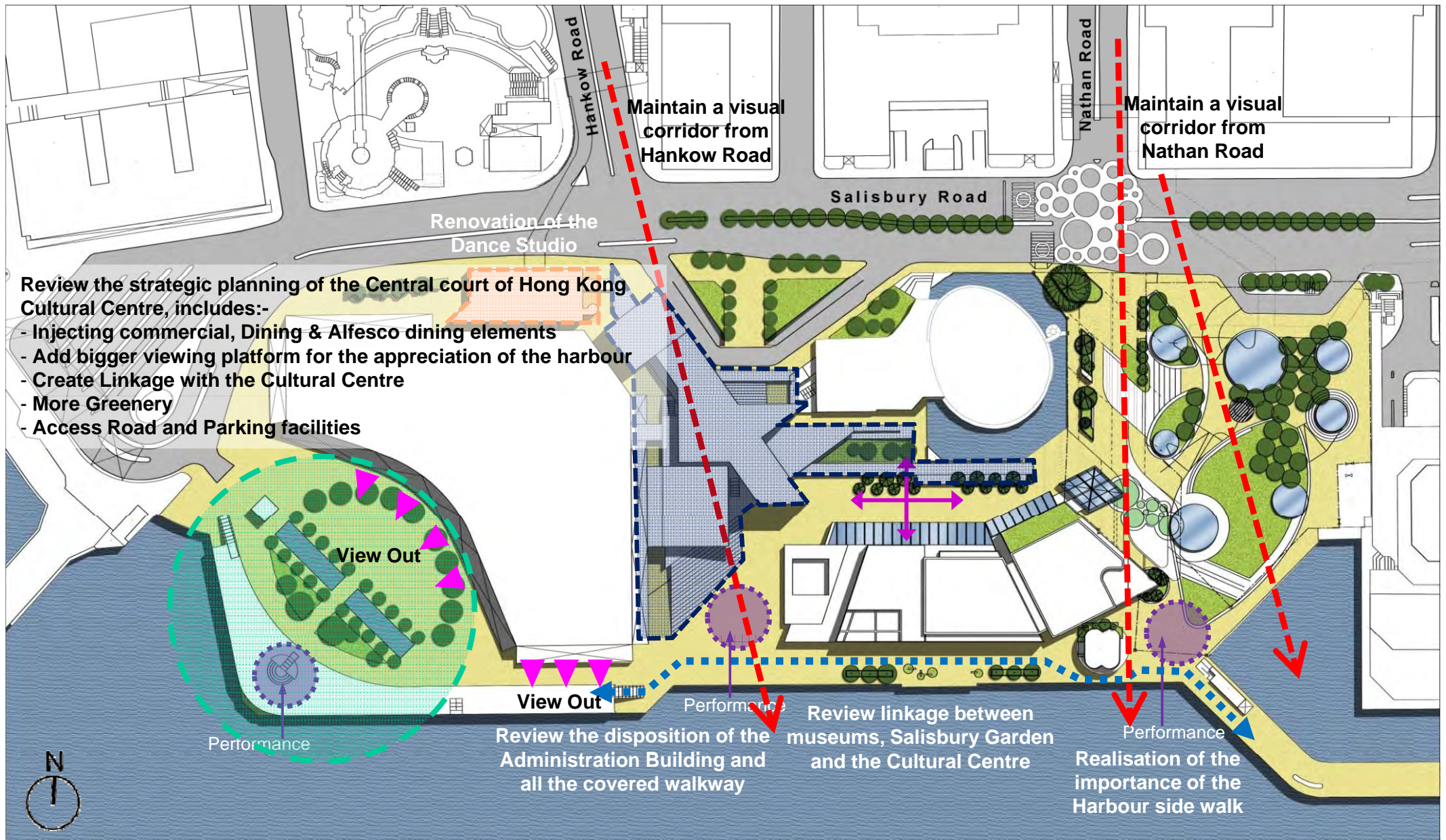
Harbourside Elevation

Renovation of the Hong Kong Museum of Art

Task Force on Harbourfront Developments in Kowloon, Tsuen Wan and Kwai Tsing

May 2013

**Master Plan
For
Hong Kong Cultural Centre Complex**



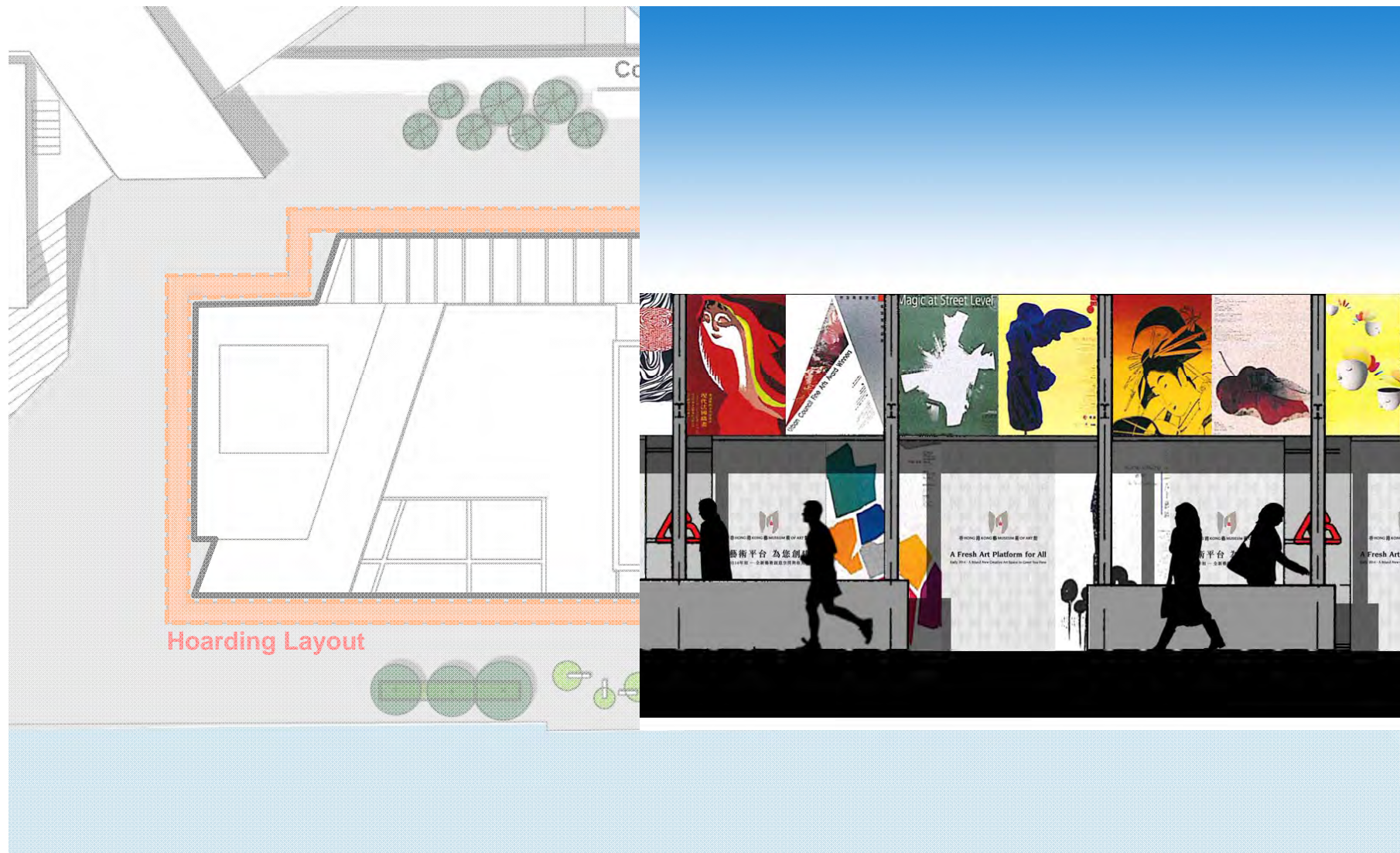
Master Layout Plan – Holistic Approach

Renovation of the Hong Kong Museum of Art

Task Force on Harbourfront Developments in Kowloon, Tsuen Wan and Kwai Tsing

May 2013

Hoarding Arrangement



Hoarding Arrangement

Renovation of the Hong Kong Museum of Art

Task Force on Harbourfront Developments in Kowloon, Tsuen Wan and Kwai Tsing

The End
Thank you