

Task Force on Harbourfront Developments In Kowloon, Tsuen Wan & Kwai Tsing

For Information
on 18 July 2012

TFK/06/2012

Pedestrian Connectivity in Tsim Sha Tsui Harbourfront

PURPOSE

This paper gives Members an overview of the existing pedestrian connectivity in Tsim Sha Tsui harbourfront.

PRESENT SITUATION

2. At present, both street level crossings and grade-separated walking facilities are generally provided for pedestrians travelling between Tsim Sha Tsui harbourfront and its hinterland. Footpaths on all directions running as part of the public road network or within open spaces are serving the street-level connectivity.

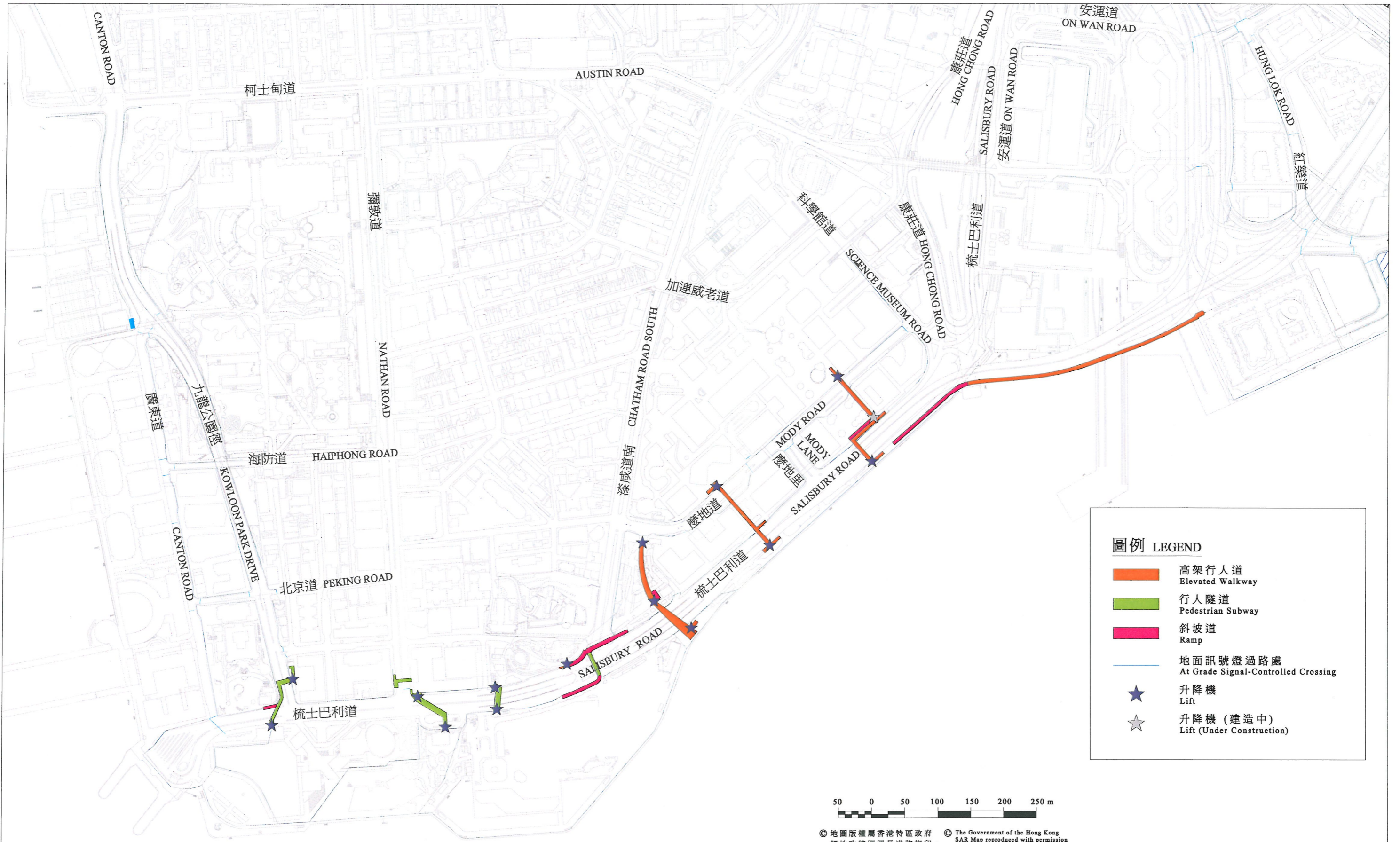
3. Several grade-separated pedestrian crossing facilities have been constructed along the harbourfront to facilitate pedestrian movements across Salisbury Road. These grade-separated facilities, in the form of footbridges and subways running generally north-south, form a skeleton triggering an expanding wide coverage of elevated walkway and subway systems now spanning over the area. The pedestrian systems provide the general public a safe and comfortable walking environment that is separated from vehicular traffic. Barrier-free access provisions are also provided at all these grade-separated crossing facilities. Between Star House and Hong Kong Cultural Centre, at-grade crossing, in the form of signalised operation, is provided across Salisbury Road.

4. All the above pedestrian networks are indicated in the attached **Figure**.

ATTACHMENT

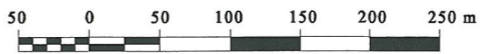
Figure – Pedestrian Network along Tsim Sha Tsui Harbourfront

Transport Department
July 2012



圖例 LEGEND

- 高架行人道
Elevated Walkway
- 行人隧道
Pedestrian Subway
- 斜坡道
Ramp
- 地面訊號燈過路處
At Grade Signal-Controlled Crossing
- 升降機
Lift
- 升降機 (建造中)
Lift (Under Construction)



© 地圖版權屬香港特區政府 經地政總署署長准許複印 • © The Government of the Hong Kong SAR Map reproduced with permission of the Director of Lands.

尖沙咀海濱一帶行人通道網絡
Pedestrian Network along Tsim Sha Tsui Harbourfront

