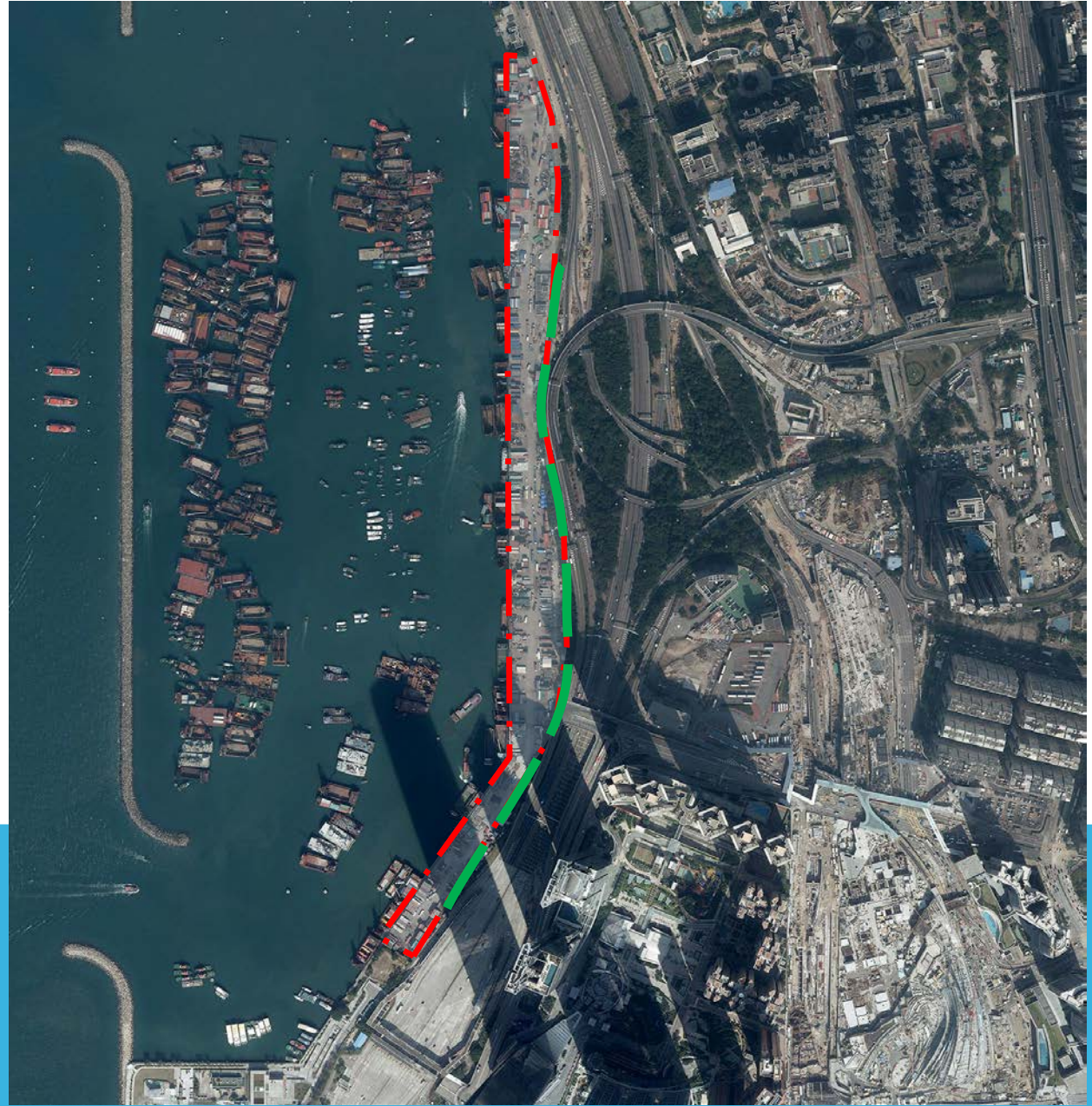
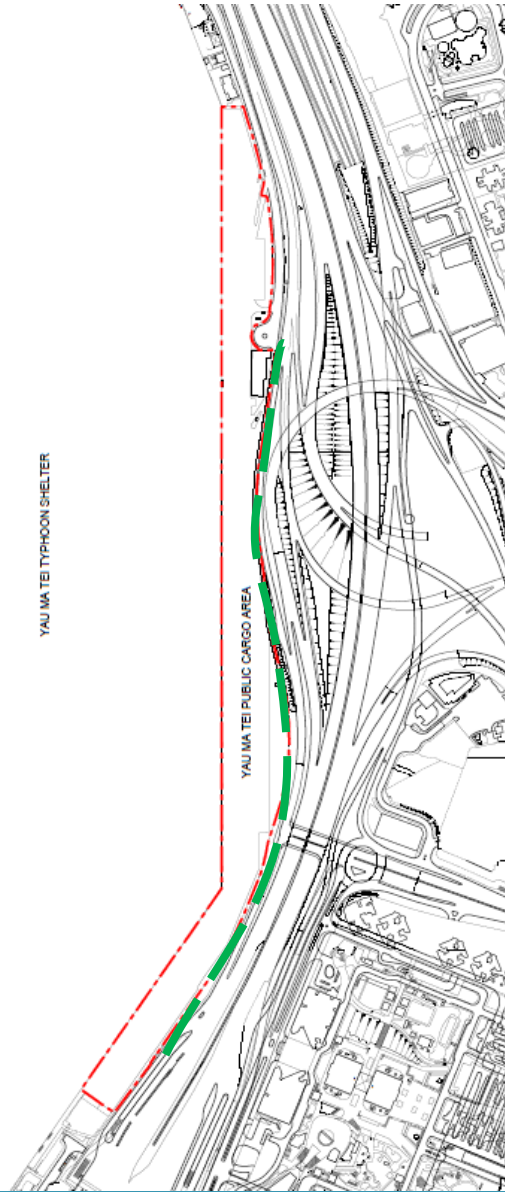


**PEDESTRIAN CONNECTION
BETWEEN TAI KOK TSUI
AND WEST KOWLOON CULTURAL DISTRICT**

Harbour Office
Development Bureau
June 2020

LOCATION PLAN



SITE VISITS

- Harbour Office
- Transport and Housing Bureau
- Marine Department
- Highways Department
- Transport Department

- 29 Berths – ~100% Usage
- Small and medium-sized enterprises (SMEs)



PEDESTRIAN CONNECTION

- Only can be provided after taking up some existing operating space of the New Yau Ma Tei Public Cargo Working Area (PCWA)
- Necessitate relocation of PCWA operators' facilities (e.g. loading and unloading areas, goods storage, other operation needs (offices and equipment))

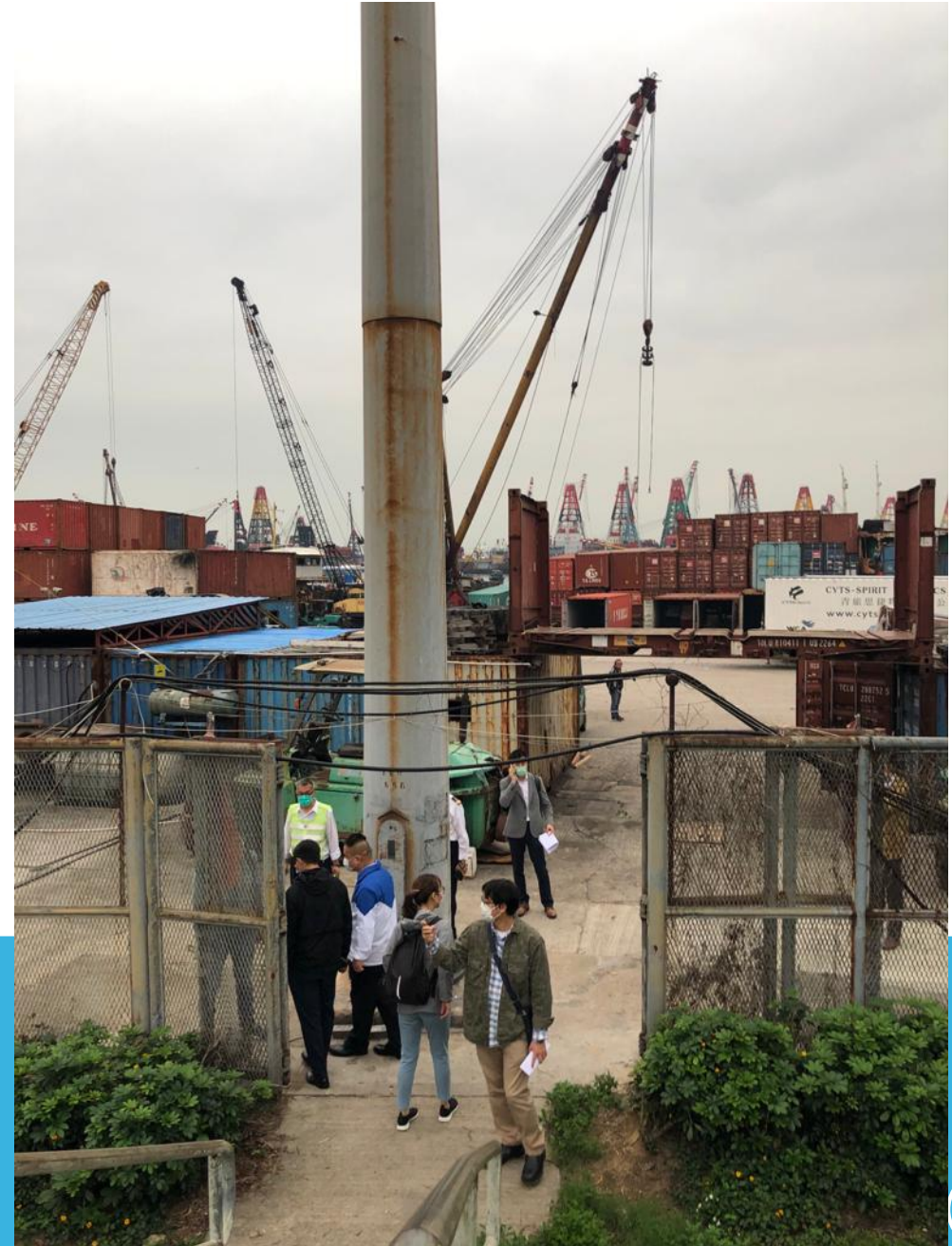
Weight Bridge and Access Road



PEDESTRIAN CONNECTION

Elevated Option

- No views of Harbour
- More Space, Time & Cost
- Impact to Operation of PCWA
- Other technical constraints



ELEVATED WALKWAY BETWEEN TAI KOK TSUI AND WKCD

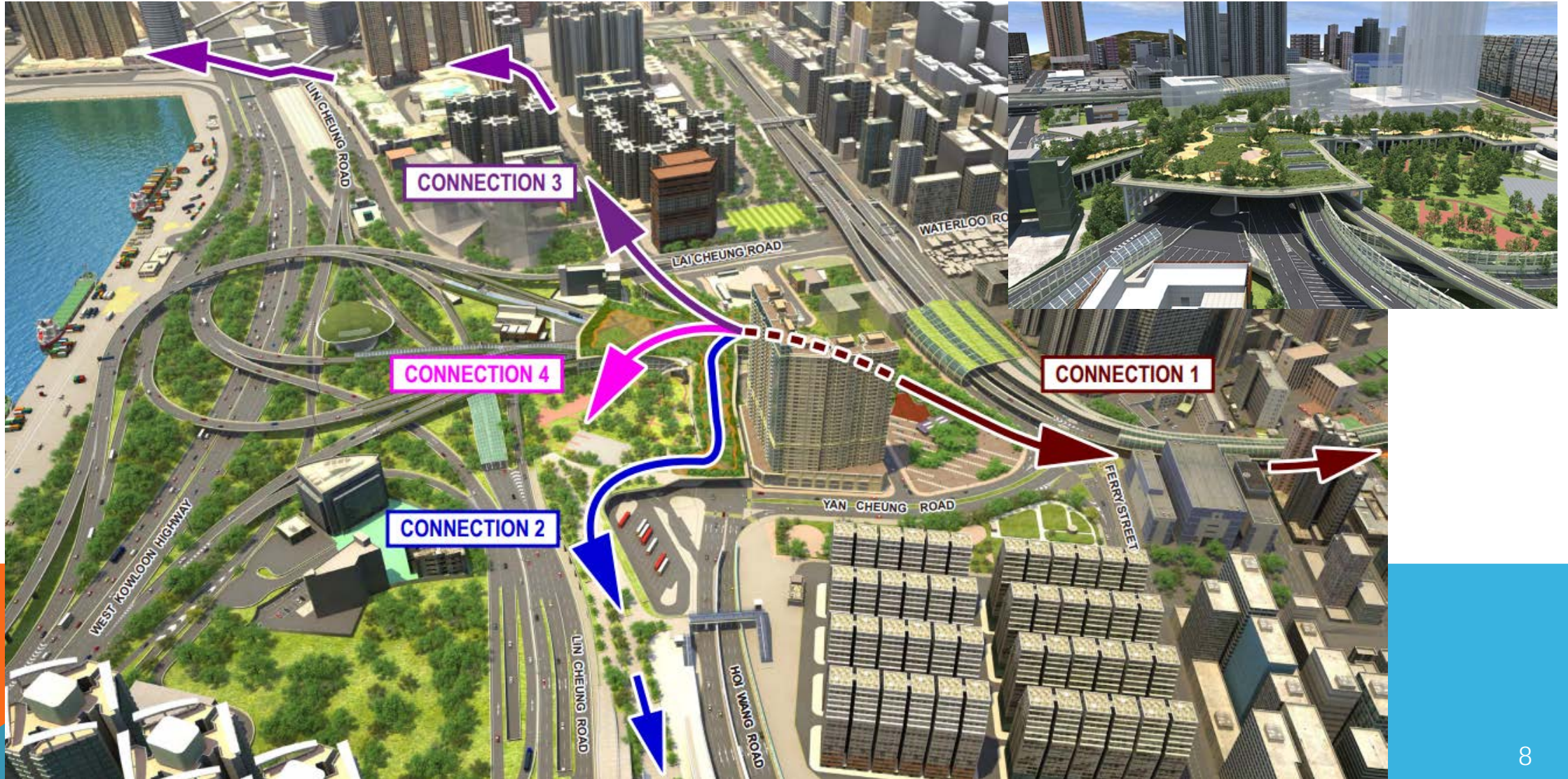
- Artist Square Bridge
(Under construction)
- MTR Kowloon Station (Open)
- West Kowloon Station Bus
Terminus (Open)
- Central Kowloon Route (CKR)
Landscaped Deck
(after opening of CKR in 2025)



ELEVATED WALKWAY – WEST KOWLOON STATION BUS TERMINUS



ELEVATED WALKWAY - CENTRAL KOWLOON ROUTE LANDSCAPED DESK



WAY FORWARD

- Focus on at-grade option
- Conduct detailed survey of the area
- Ascertain the extent of impact on the PCWA operation and how such impact can be minimised
- Consult the operators on the proposal(s)
- Incorporate the associated requirements in the re-tendering exercise in 2021 as appropriate

THANK YOU