

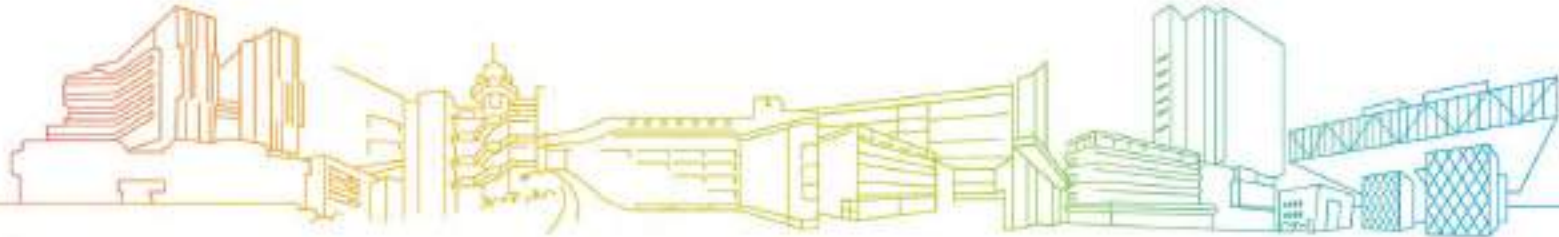




Development of New Campus of Vocational Training Council (VTC) at Kowloon East (Cha Kwo Ling)

Consultation with Kai Tak Task Force (KTTF) of Harbourfront Commission (HC) on Main Works

ARUP  P&T GROUP  DLR GROUP ennead  AECOM 14 Mar 2024



Content page

- **Update of Master Layout Plan (MLP) & Connectivity with nearby developments**
- **Overall Design Concept**
- **Response to KTTF comments on Pre-construction Works**
- **Design for Main Works**

**Update of MLP
&
Connectivity with nearby developments**

Project in Two Phase

Existing Site Plan

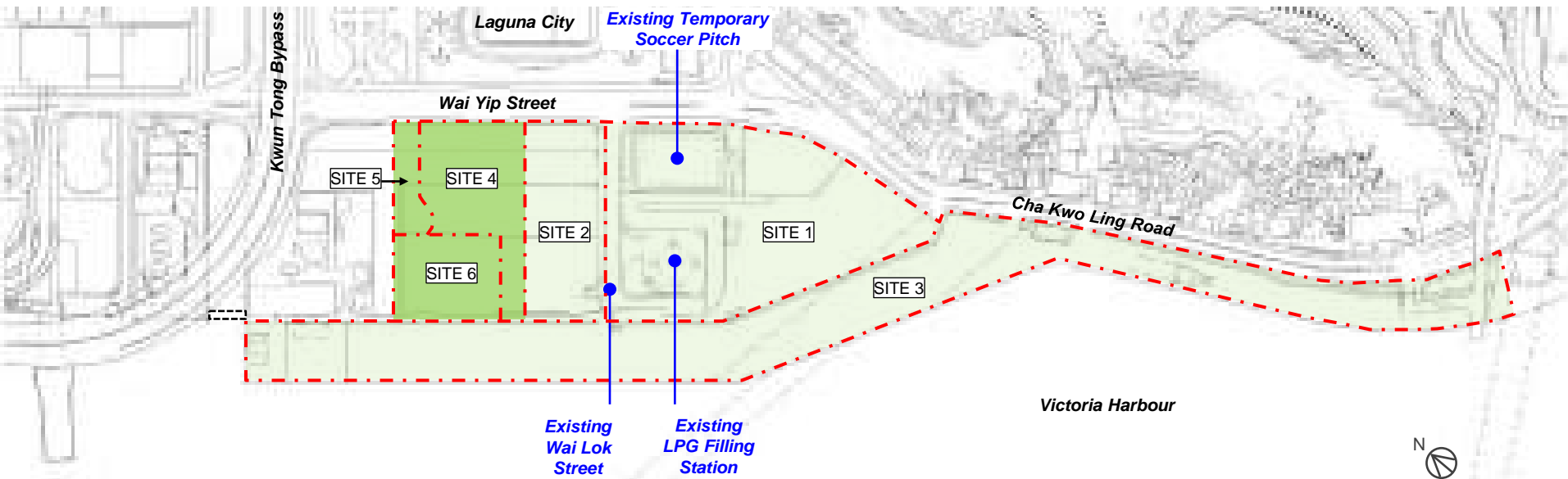


Construction Works

- SITE 1** A new multi-disciplinary campus for VTC to accommodate around 6,000 students (Site area around 32,000 m²)
- SITE 2** a new POS to be used by the public of approximately 10,000 m²
- SITE 3** an approximate 45,000 m² POS of Harbourfront Promenade

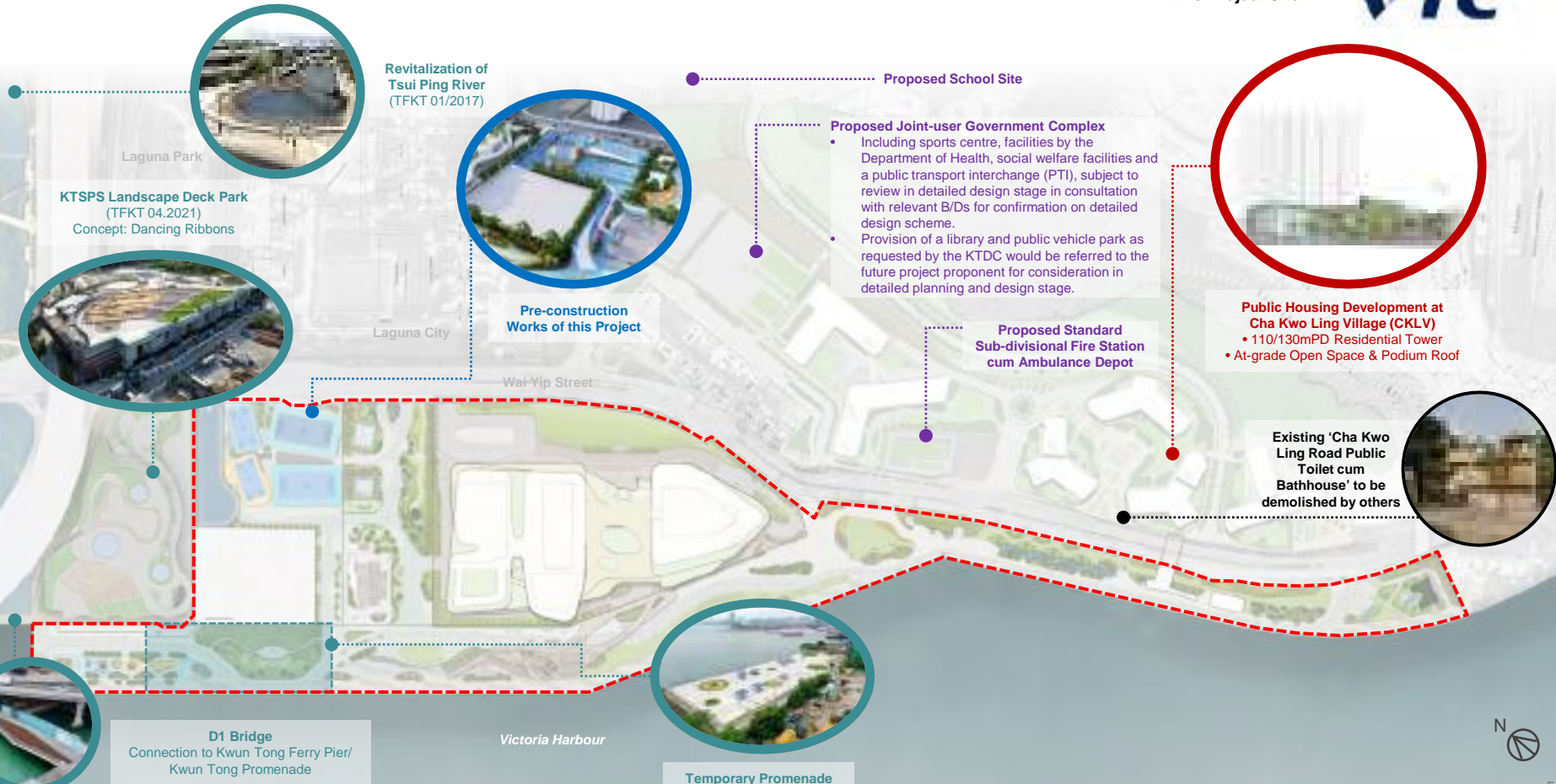
Pre-construction Works

- SITE 4** Re-provisioning of the POS and the temporary soccer pitch (Site area around 8,690 m²)
- SITE 5** Re-provisioning of Wai Lok Street (Site area around 2,060 m²)
- SITE 6** Site clearance works to facilitate the re-provisioning of the Liquefied Petroleum Gas (LPG) Filling Station. The relocated LPG Filling Station is designed and constructed by others (Site area around 5,880 m²)



Surrounding Development Projects

--- Boundary Line of this Project Site



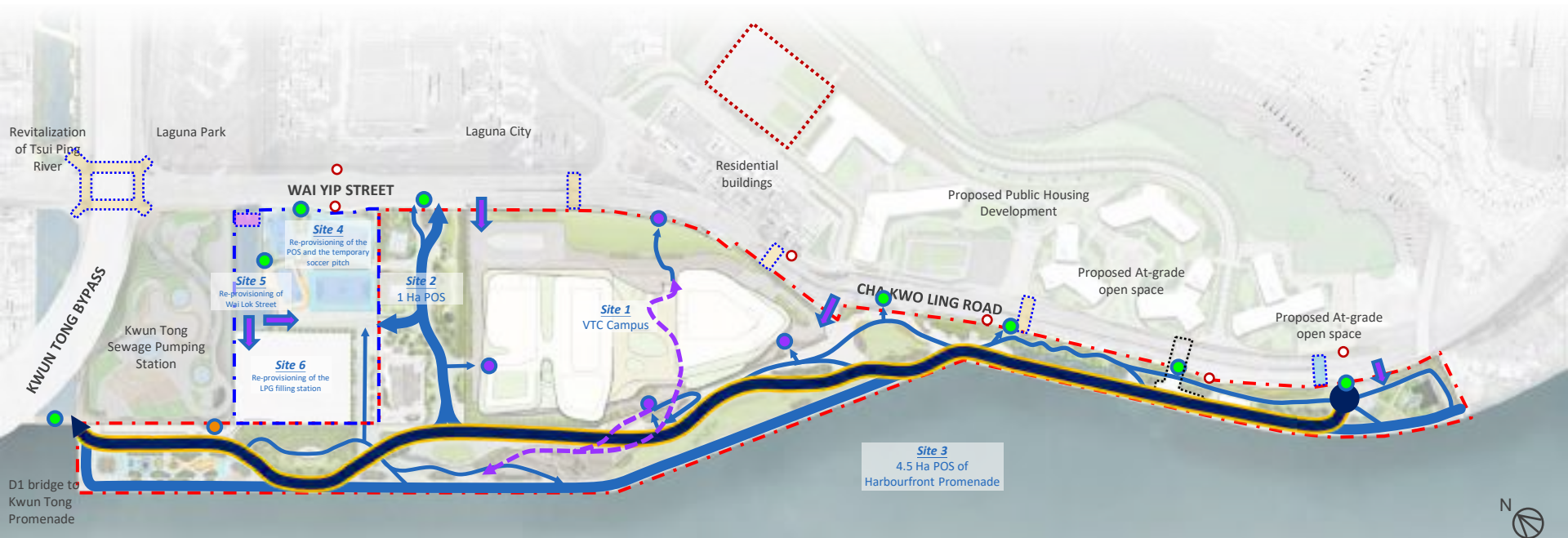
Heritage Conservation under CKLV

--- Boundary Line of this Project Site



Urban Connectivity

Connecting the Neighbourhood



LEGEND

- | | | | | | | | |
|--|--|--|--|--|---|--|--|
| | Construction Works Boundary | | Greenway (6 - 10M) | | Promenade (Site3), 1Ha Open Space (Site 2) & (Site 4) Access Point | | Planned Public Transport Interchange (PTI) (by others) |
| | Pre-Construction Works Boundary | | Secondary Pathway (2m abutting to both side of greenway) | | Proposed ground floor Entrances to VTC Campus | | Existing bus/ mini-bus stop |
| | Existing At-grade Pedestrian Crossing | | Primary Pedestrian Circulation (at-grade) | | Vehicular Run-in-out | | |
| | Planned At-grade Pedestrian Crossing | | Secondary Pedestrian Circulation (at-grade) | | Lift and Staircase access to Existing Kwun Tong Sewage Pumping Station Podium Landscape | | |
| | Indicative Location of Proposed Planned Elevated Pedestrian Crossing (by others) | | Elevated Pedestrian Circulation through VTC Campus | | | | |
| | Proposed Signalized Crossing and Widening Works (by others) | | | | | | |



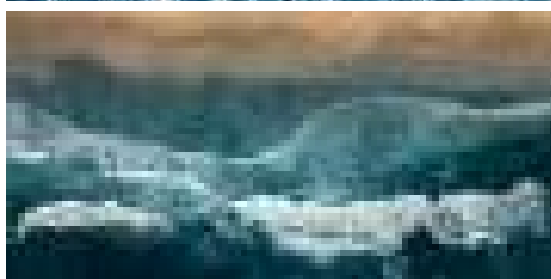
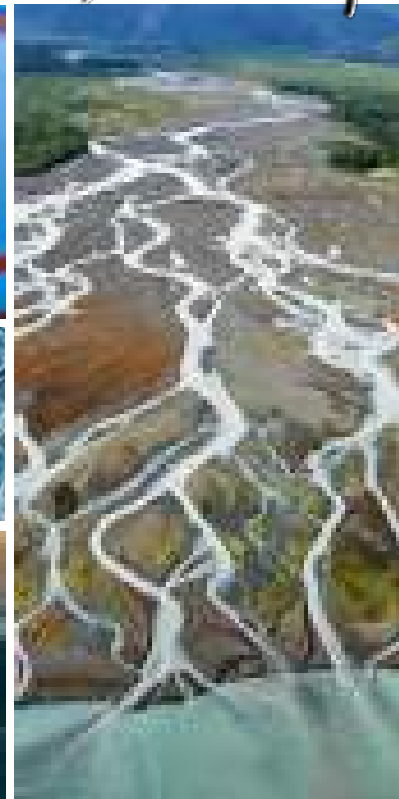
Overall Design Concept



Design Concept

Dynamic Water

“A drip of water ripples and shines on the Bay”



- A very **poetic expression** to speak loudly of its concept, like **a drip of water ripples and shines on the Victoria Harbour**
- **Sculptural form** reflects the dynamic motion of the water and waves

Thematic Zoning

Expression of Dynamic Water in Project Sites

--- Boundary Line of this Project Site



- Pre-construction works**
- Re-provisioning of the POS and the temporary soccer pitch
 - Re-provisioning of Wai Lok Street

- Main construction works**
(Extent of this Submission)
- 4.5 Ha POS of Harbourfront Promenade
 - 1 Ha POS
 - VTC campus



“雖由人作，宛自天開” 計成(明) - 《園冶》中國第一部造園學的專著
“Man-made as natural as God-made” Ji Cheng (Ming) - “Yuanye” China’s first monograph on gardening

Planning Framework

An Integrated Planning Framework with Water Dynamics and Undulating Landform



MULTI-LEVEL EXPERIENCE



HERITAGE & TRADITIONAL CHINESE ELEMENT



Response to KTTF comments on Pre-construction Works

Overview of previous KTTF Meeting



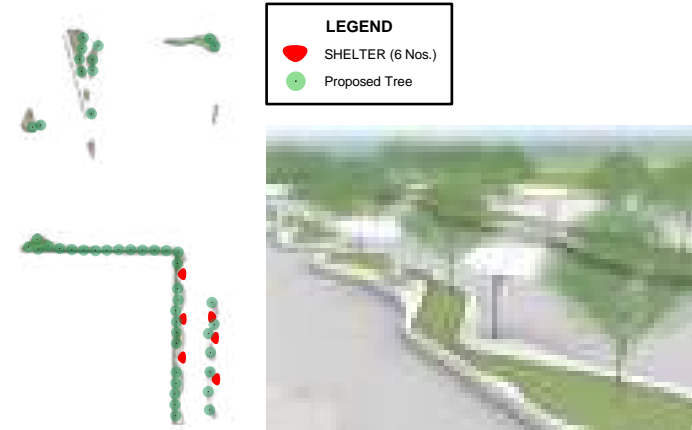
KTSPS Landscape
Deck Park

Pre-construction works

Summary of Response to KTTF comments on Pre-construction Works



Major Discussed Issues	Response/ Design Updates
Matters in relation to reprovision of LPG	To be addressed separately by Environment and Ecology Bureau (EEB).
Provision of food & beverage, alfresco dining	Light refreshment kiosk will be provided at harbourfront promenade according to the LCSD requirements. Provisional space with water and power supply, as well as sewage connection will be provided at the POS for ad-hoc retail or food and beverage activities.
Consider shaded seating and shelter, more planting and trees	Pavilions with seating and tree planting are maximized along the landscape areas.
Explore provision of rest room for janitor	Two cleaners stores are provided at each male and female toilet; another additional cleaner room and seating are also provided at the covered areas possible for janitor resting.
Re-consider location of baby care room for possible viewing to soccer pitches	Baby care room is provided at covered area. View panel is not provided due to privacy concern.
Sloping roof above spectator stand of soccer pitch to prevent balls being trapped at roof top.	Sloping roof in curvy shape with maintenance access is designed.



LEGEND

- SHELTER (6 Nos.)
- Proposed Tree

Design for Main Works

Landscape Master Plan



Legend

- - - Construction Works
- - - Pre-Construction Works


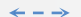






Site 2 - 1 Ha POS Overview

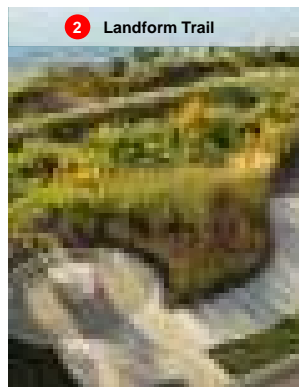
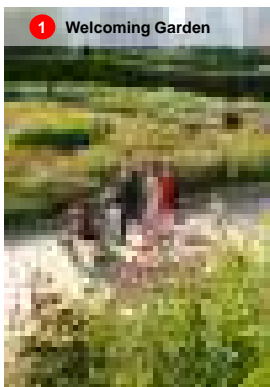


LEGEND

-  Primary Pedestrian Circulation (At-grade)
-  Secondary Pedestrian Circulation (At-grade)
-  Promenade (Site 3) & 1 Ha POS (Site 2) Access Point
-  Proposed Ground Floor Entrances to VTC Campus



Site 2 Thematic Zoning: River Valley



Overall Planting Theme

Site 2 & 3

Proposed Tree Planting Palette

Species	Chinese	Remarks	JAN	FEB	MAR	APR	MAY	JUN	JUL	AUG	SEPT	OCT	NOV	DEC
Bischofia javanica	秋楓	Native				FLOWER				FRUIT				
Cassia bakeriana	花旗木					FLOWER								
Cleistocalyx nervosum	水翁	Native, GMP & STSG					FLOWER			FRUIT				
Crateva unilocularis	樹頭菜				FLOWER				FRUIT					
Elaeocarpus chinensis	中華杜英	Native, GMP & STSG					FLOWER					FRUIT		
Liquidambar formosana	楓香	Native	FOLIAGE				FLOWER			FRUIT			FOLIAGE	
Peltophorum tonkinense	銀珠					FLOWER				FRUIT				
Plumeria rubra	紅雞蛋花	GMP & STSG				FLOWER				FRUIT				
Plumeria rubra	紅雞蛋花	GMP & STSG				FLOWER				FRUIT				
Pongamia pinnata	水黃皮	Native, GMP & STSG					FLOWER				FRUIT			
Tabebuia impetiginosa	紫花風鈴木	GMP				FLOWER			FRUIT					
Viburnum odoratissimum	珊瑚樹	Native				FLOWER			FRUIT					

百花齊放 Blossom Ensemble

LEGEND

- - - - - Construction Works Boundary

- - - - - Pre-Construction Works Boundary

Green Buffer Planting

Entrance Landscape

Lawn Area

Feature Planting Area

Sitting Area Planting



Soft Landscape Zone

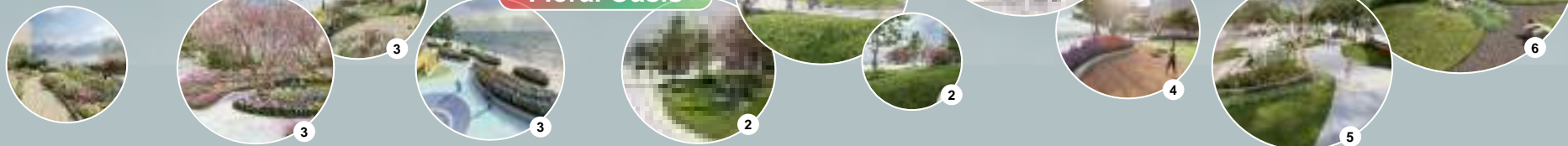
- 1 Garden Berm
- 2 Open Lawn
- 3 Sitting-out Garden & Space
- 4 Botanical Garden
- 5 Landform Surfing Garden
- 6 Rock Garden



Soft Landscape Theme 01
彩虹花丘
Blossom Hillside

Soft Landscape Theme 02
花鳥島岸
Floral Oasis

Soft Landscape Theme 03
園林百景
Scenic Mosaic



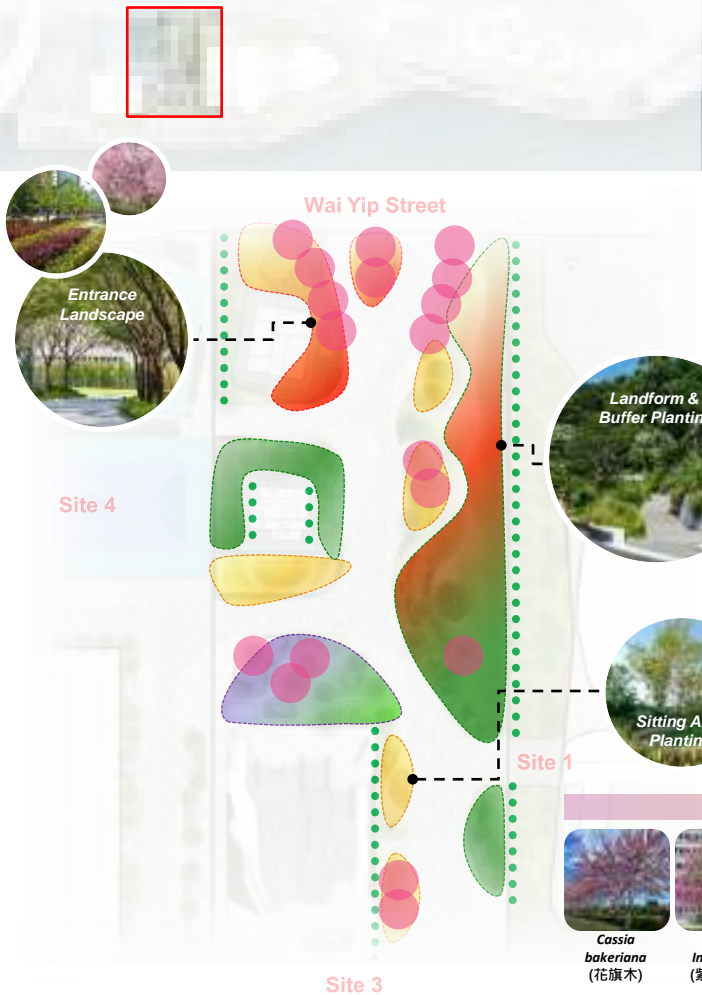
Site 2: Welcoming Entrance



Site 2: Welcoming Entrance

LEGEND

- Green Buffer Planting
- Entrance Landscape
- Feature Planting Area
- Sitting Area Planting
- Feature Tree



Proposed Shrub Planting List

	Botanical Name	Chinese Name	Native/Exotic	Planting Zone			
				Entrance Landscape	Green Buffer Planting	Feature Planting Area	Sitting Out Area
SHRUBS	<i>Allium schoenoprasum</i>	北葱	Native	V	V	V	V
	<i>Caesalpinia pulcherrima</i>	洋金鳳	Exotic			V	V
	<i>Canna indica</i>	美人蕉	Exotic			V	
	<i>Ficus microcarpa</i> var. <i>crassifolia</i>	火山榕	Exotic		V		V
	<i>Cosmos bipinnatus</i>	波斯菊	Exotic			V	
	<i>Jasminum sambac</i>	茉莉	Exotic	V	V		V
	<i>Lantana camara</i> 'Flava'	黃花馬纓丹	Exotic	V	V		V
	<i>Pennisetum setaceum Rubrum</i>	紫葉狼尾草	Native	V		V	V
	<i>Miscanthus sinensis</i>	芒草	Native			V	
	<i>Angelonia angustifolia</i>	狹葉天使花	Exotic	V		V	
GROUNDCOVERS	<i>Calathea sanderiana</i> 'Julia'	彩虹竹芋	Exotic	V			
	<i>Caladium bicolor</i>	五彩芋	Exotic	V			
	<i>Cuphea hyssopifolia</i>	細葉雪茄花	Exotic		V	V	
	<i>Codiaeum variegatum</i>	變葉木	Exotic	V			V
	<i>Phyllanthus myrsinifolius</i>	柳腺葉下珠	Exotic	V	V		V
	<i>Axonopus compressus</i>	地毯草	Exotic	V			



Proposed Feature Tree



Canopy & Buffer Tree



Viewpoint



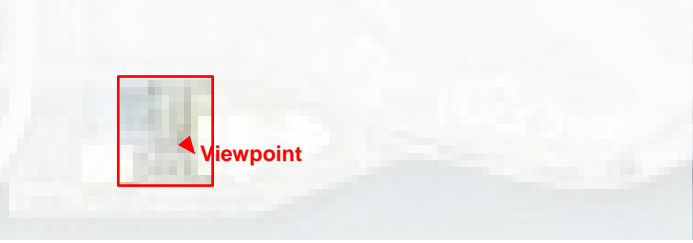
Site 2: Welcoming Entrance

Perspective



Way-finding Signage
導向標示牌

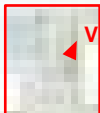




Site 2: Landform Trail & Leisure Facilities

Perspective





Viewpoint

Site 2: Organic Berm & Skatepark Integration

Perspective

*Integrated
Landform*
融合地景

Leisure Mound
休閒地丘

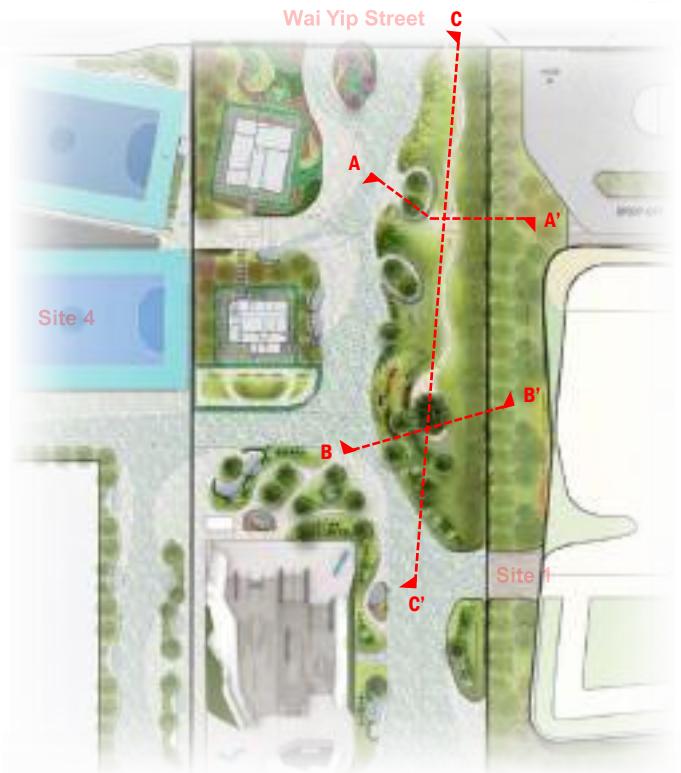


*LCSD Mascots in
sports styles*
活力仔和思文喵



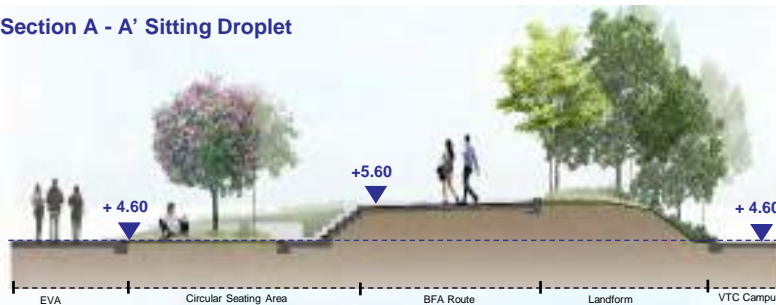


Site 2: Sections



Site 3

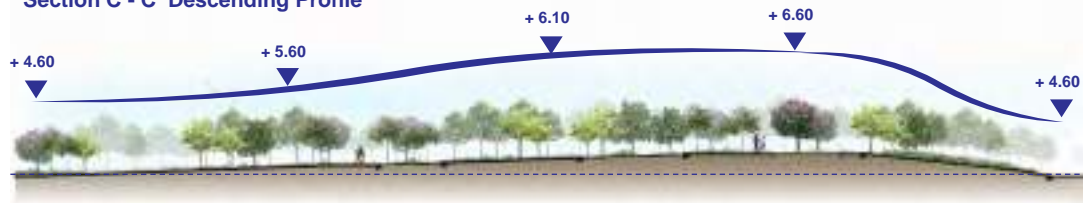
Section A - A' Sitting Droplet



Section B - B' Terrace Seating



Section C - C' Descending Profile



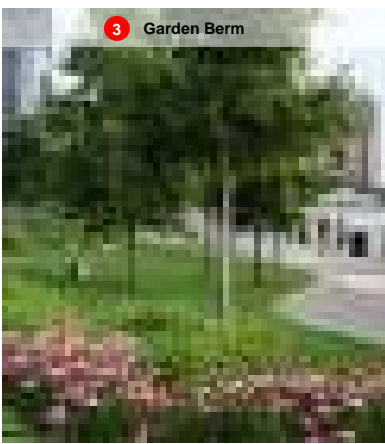
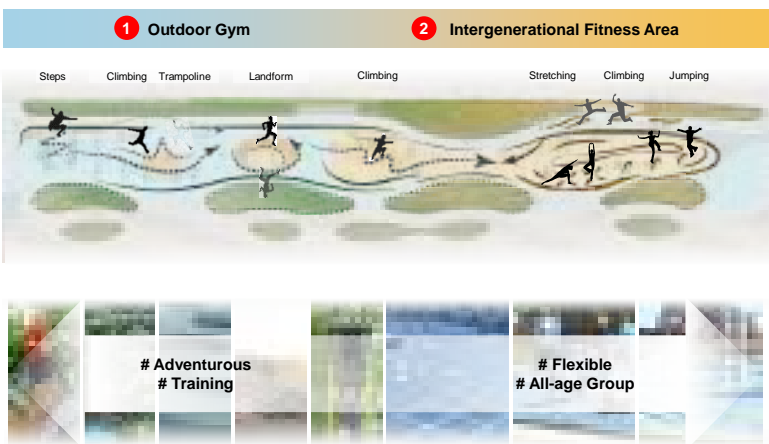
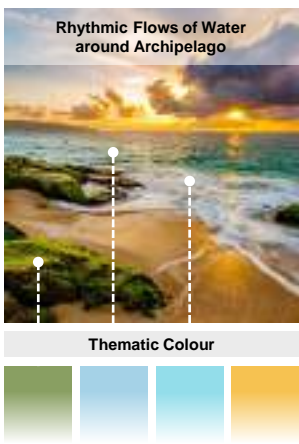
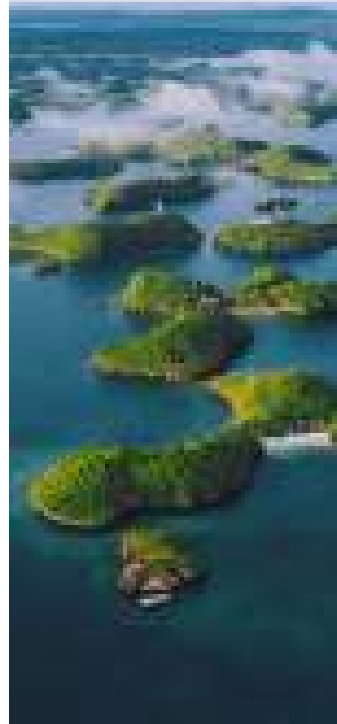
Site 3: Western Section Overview

LEGEND

- Primary Pedestrian Circulation (At-grade)
- Secondary Pedestrian Circulation (At-grade)
- Promenade (Site 3) & 1 Ha POS (Site 2) Access Point
- Lift and Staircase access to Existing Kwun Tong Sewage Pumping Station Podium Landscape



Site 3 Thematic Zoning: Costal & Archipelago



Site 3: Outdoor Gym

Costal & Archipelago



- Undulating
- Dynamic & High-Intensity



1 Quintuple Steps

2 Peg Bridge

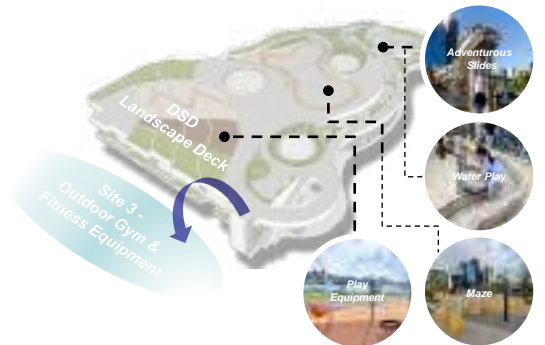
3 Trampoline

4 Ripple Landform

5 Spiderwalk



Reinforce Active Zone Character

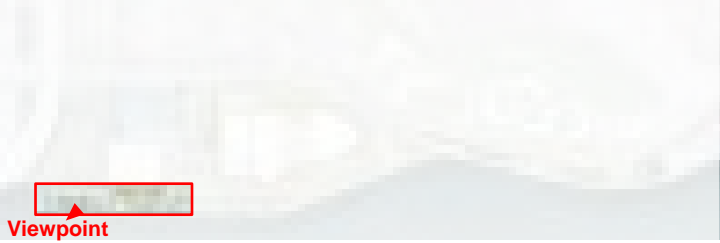


Site 3: Intergenerational Fitness Area

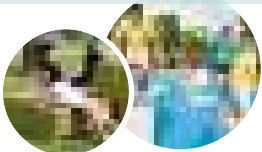
Costal & Archipelago



- Flexible
- Inclusive Blends of Activities
- Cover all 7 Movements Foundational to Humans
- Accessible equipment for wheel-chair user



1 Boxes and Steps Components



7 Primal Movements



Squat

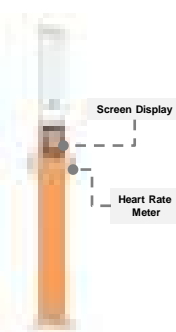
Hinge

Lunge

4 Accessible Equipment



5 Smart Fitness Equipment



2 Floor-based Zone



7 Primal Movements



Push



Gait

3 Bar Components



7 Primal Movements



Pull



Rotation



LOSD Mascots in sports styles
活力仔和思文喵

Site 3: Entrance Garden & Berm Planting



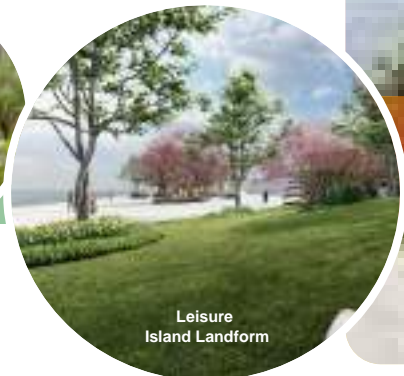
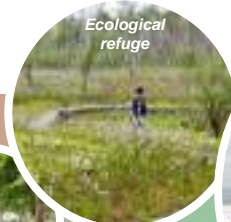
Link Bridge

DSD Landscape Deck

Site 4 (+4.0)

Entrance Flowering Active Islands

Active Ecological Terrain



Soft Landscape Theme
花鳥島岸
Floral Oasis

Site 3: Entrance Garden & Berm Planting

LEGEND

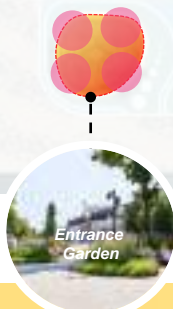
- Green Buffer Planting
- Feature Planting Area
- Feature Tree
- Entrance Landscape
- Sitting Area Planting
- Lawn Area

Link Bridge

DSD Landscape Deck

Site 6

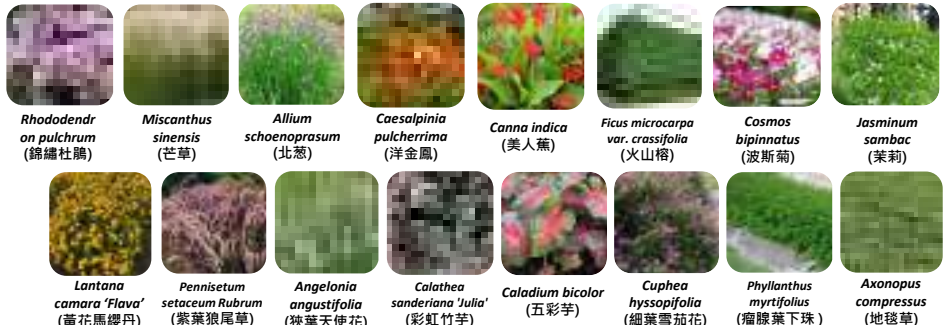
Site 4 (+4.0)



Proposed Feature Tree



Proposed Shrub Planting List



Canopy & Buffer Tree



	Botanical Name	Chinese Name	Native/ Exotic	Planting Zone				
				Entrance Landscape	Green Buffer Planting	Lawn Area	Feature Planting Area	Sitting Out Area
SHRUBS	<i>Allium schoenoprasum</i>	北蔥	Native	v	v	v	v	
	<i>Caesalpinia pulcherrima</i>	洋金鳳	Exotic				v	v
	<i>Canna indica</i>	美人蕉	Exotic				v	
	<i>Ficus microcarpa var. crassifolia</i>	火山榕	Exotic		v			v
	<i>Cosmos bipinnatus</i>	波斯菊	Exotic				v	
	<i>Jasminum sambac</i>	茉莉	Exotic	v	v			v
	<i>Lantana camara 'Flava'</i>	黃花馬纓丹	Exotic	v	v			v
	<i>Pennisetum setaceum Rubrum</i>	紫葉狼尾草	Native	v		v	v	v
	<i>Rhododendron pulchrum</i>	錦繡杜鵑	Exotic			v	v	v
	<i>Miscanthus sinensis</i>	芒草	Native			v	v	
GROUNDCOVER	<i>Angelonia angustifolia</i>	狹葉天使花	Exotic	v		v	v	
	<i>Calathea sanderiana 'Julia'</i>	彩虹竹芋	Exotic	v				
	<i>Caladium bicolor</i>	五彩芋	Exotic	v				
	<i>Cuphea hyssopifolia</i>	細葉雪茄花	Exotic		v	v	v	
	<i>Codiaeum variegatum</i>	變葉木	Exotic	v				v
	<i>Phyllanthus myrtifolius</i>	瘤腺葉下珠	Exotic	v	v	v		v
	<i>Axonopus compressus</i>	地毯草	Exotic	v		v		

Site 3: Western Section

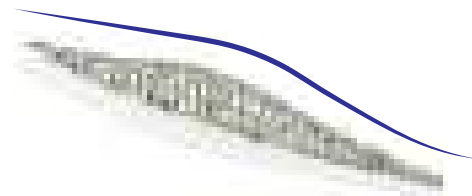
Perspective



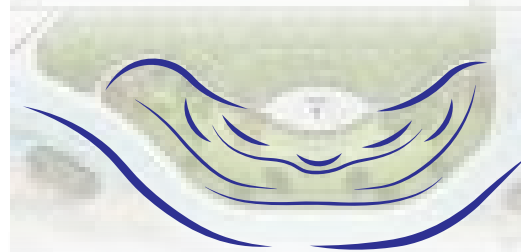
Viewpoint



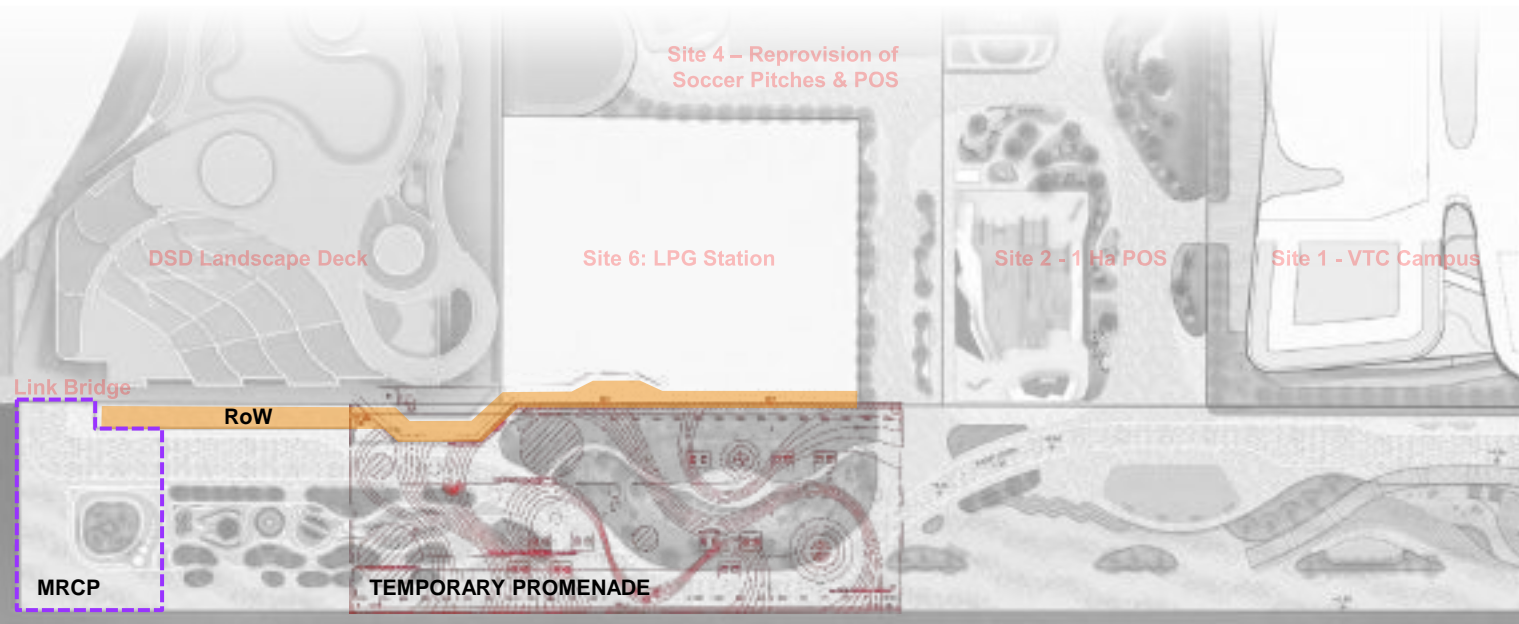
Undulating Trellis



Layers of Wave



Site 3: Interface with adjacent Sites



Existing Facilities (captured on Aug 2023)



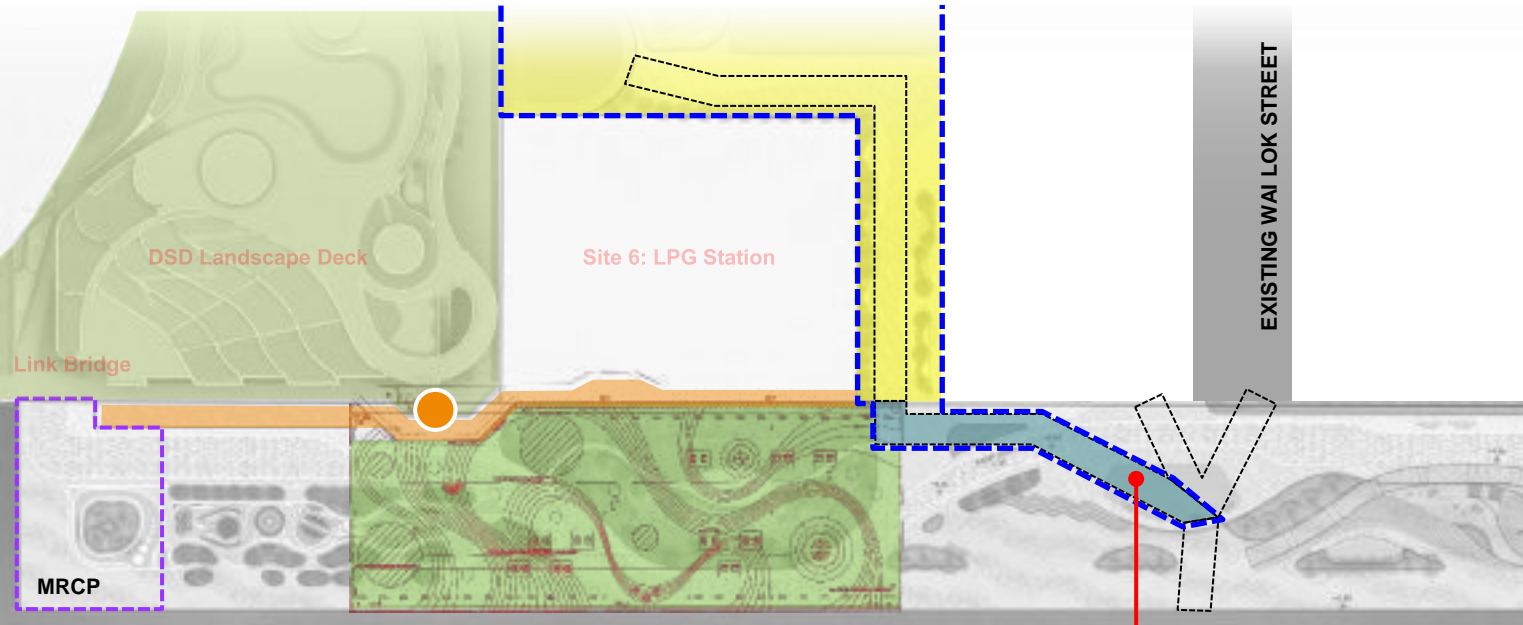
Existing Facilities

- Play Equipment
- Seating Bench
- Buffer Planting
- Shelter cum Seating
- Seawall Railing
- Light Pole
- U-channel
- Floor Graphics
- Artificial Lawn w/ Figures

LEGEND

- DSD Temporary Promenade
- - - Marine Department Refuse Collection Point (MRCP)
- Right of Way (RoW)

Site 3: Interface with DSD Temporary Promenade



LEGEND

- DSD Temporary Promenade
- Marine Department (MD) Refuse Collection Point (RCP)
- Right of Way (RoW)
- Hoarding Boundary
- Drainage Works Extent
- Drainage System to be constructed within Site 3 during preconstruction stage
- Construction Area
- Facilities under Operation
- Lift and Staircase access to Existing Kwun Tong Sewage Pumping Station Podium Landscape

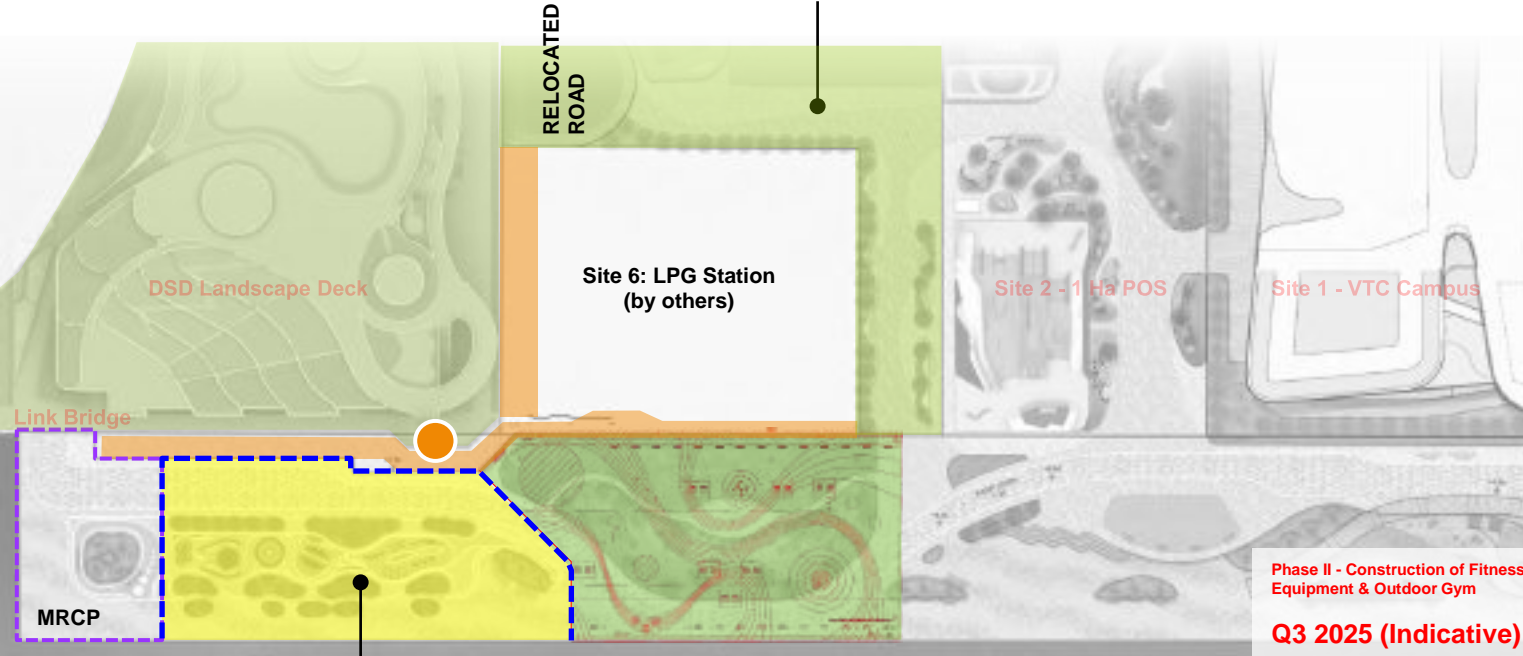
Phase I - Construction of Drainage System to be within Site 3 during preconstruction stage

Q1 2025 (Indicative)

Site 3: Interface with DSD Temporary Promenade



Pre-construction works complete in around Q3 2025



LEGEND

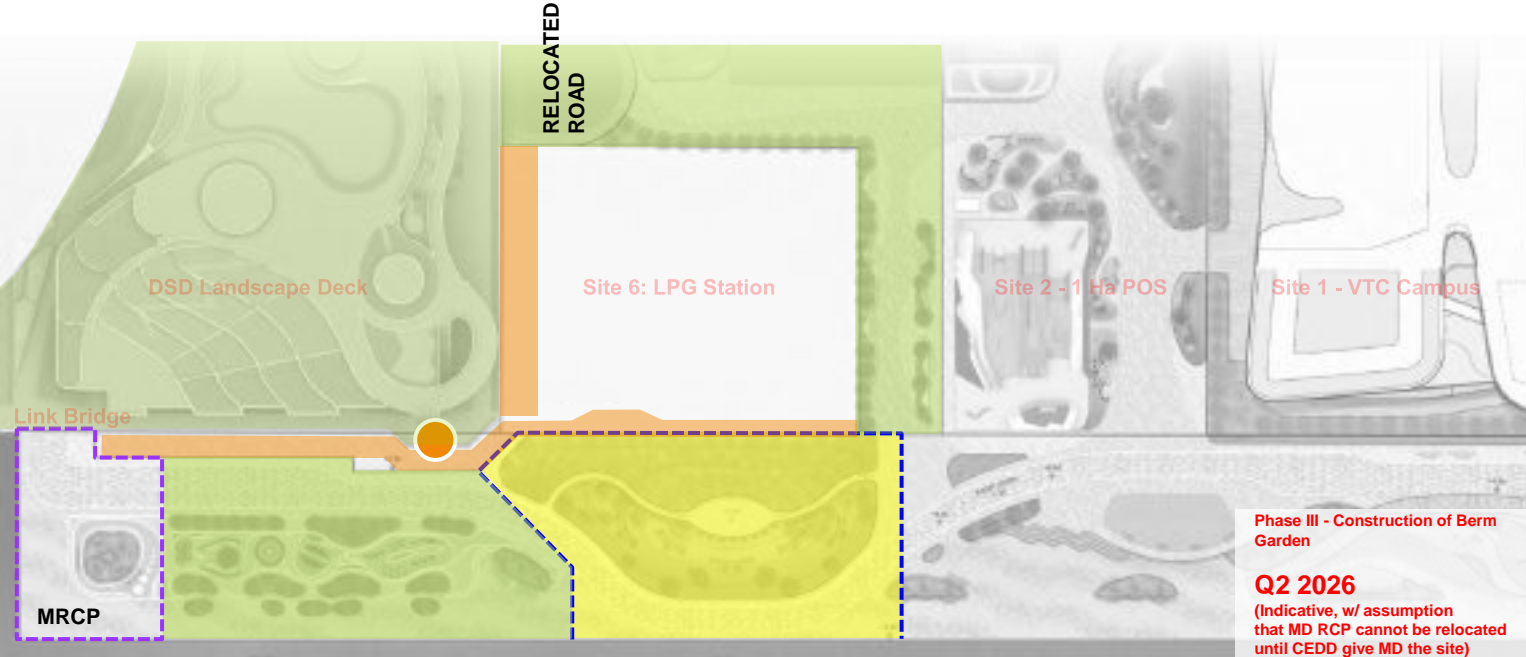
- DSD Temporary Promenade
- - - Marine Department (MD) Refuse Collection Point (RCP)
- Right of Way (RoW)
- - - Hoarding Boundary
- Construction Area
- Facilities under Operation
- Lift and Staircase access to Existing Kwun Tong Sewage Pumping Station Podium Landscape

Phase II - Construction of Fitness Equipment & Outdoor Gym

Q3 2025 (Indicative)

Early part of main work start around Q3 2025

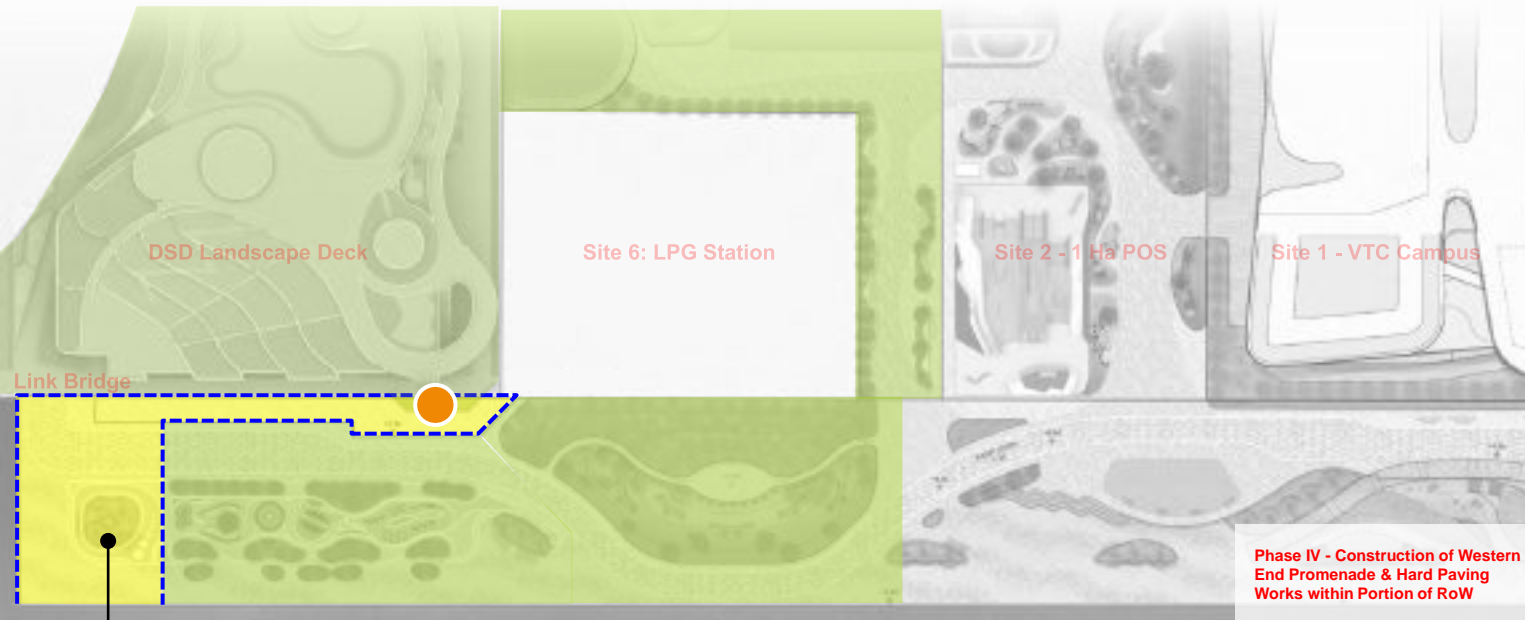
Site 3: Interface with DSD Temporary Promenade



LEGEND

- DSD Temporary Promenade
- Marine Department (MD) Refuse Collection Point (RCP)
- Right of Way (RoW)
- Hoarding Boundary
- Construction Area
- Facilities under Operation
- Lift and Staircase access to Existing Kwun Tong Sewage Pumping Station Podium Landscape

Site 3: Interface with DSD Temporary Promenade



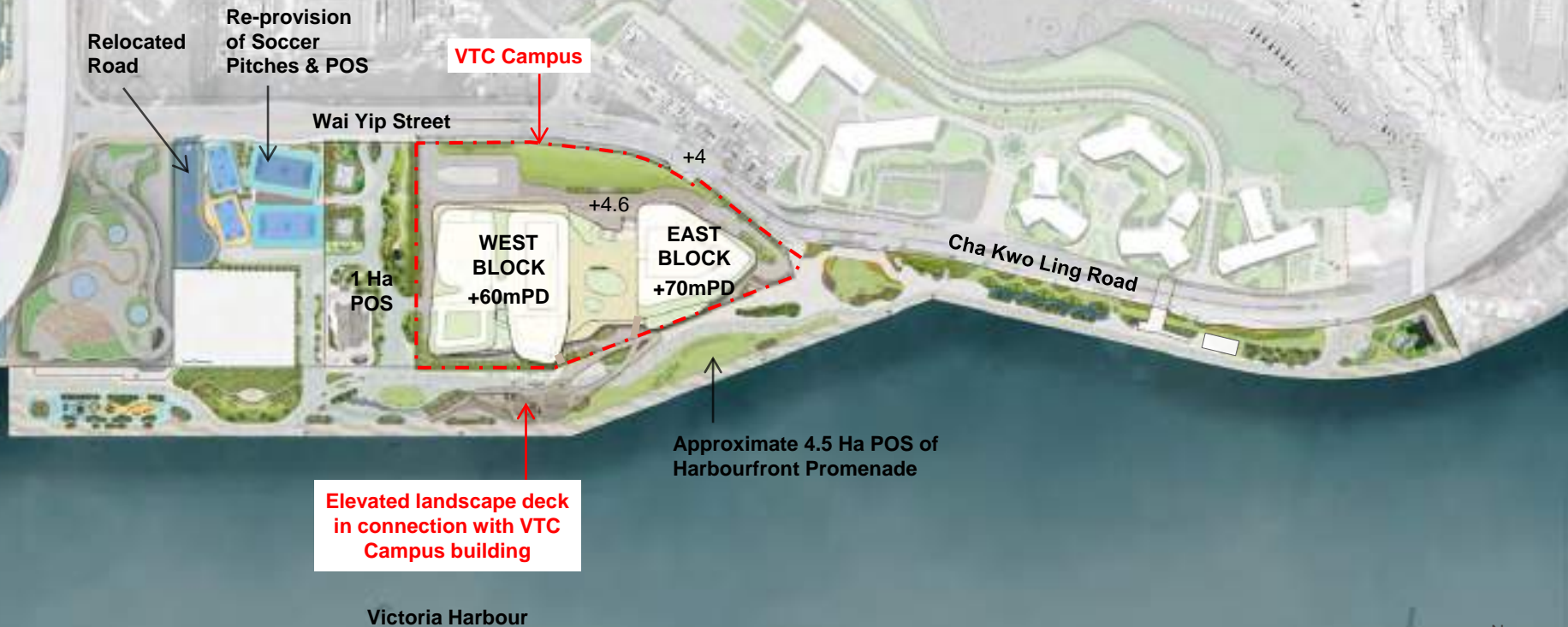
- LEGEND**
- DSD Temporary Promenade
 - - - Hoarding Boundary
 - Construction Area
 - Facilities under Operation
 - Lift and Staircase access to Existing Kwun Tong Sewage Pumping Station Podium Landscape

Phase IV - Construction of Western End Promenade & Hard Paving Works within Portion of RoW

Construction work starts upon relocation of MRCP



VTC Interdisciplinary Campus



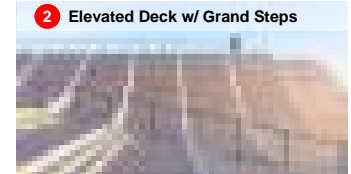
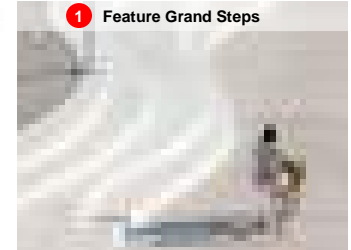
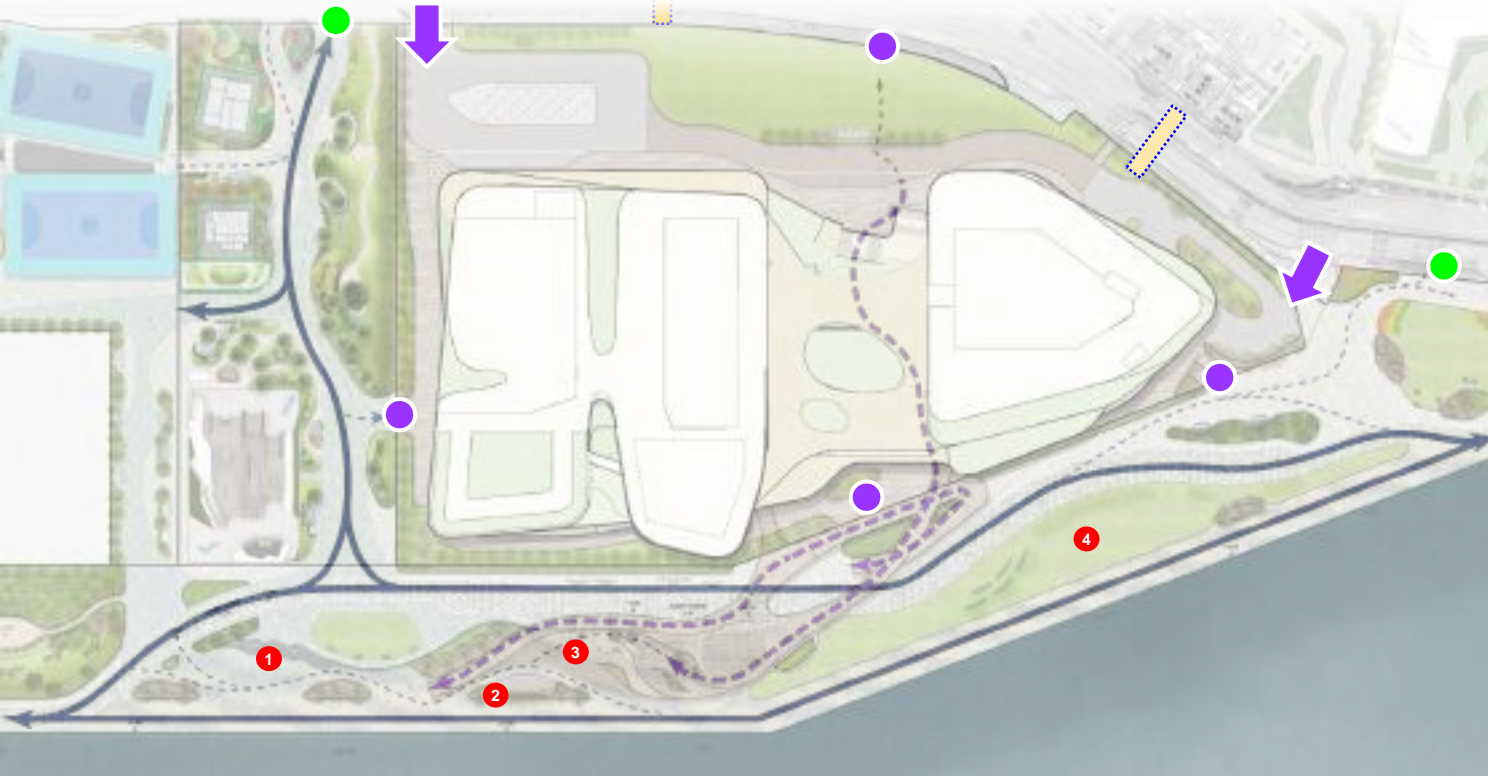


Site 3: Central Section Overview



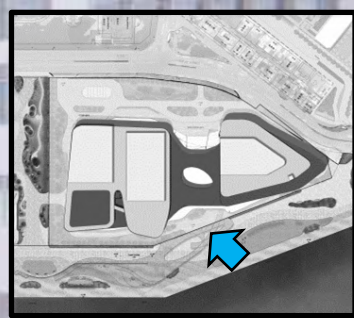
LEGEND

	Primary Pedestrian Circulation (At-grade)		Vehicular Run-in-out
	Elevated Pedestrian Circulation through VTC Campus		Promenade (Site 3) & 1 Ha POS (Site 2) Access Point
	Secondary Pedestrian Circulation (At-grade)		Proposed Ground Floor Entrances to VTC Campus
			Existing At-grade Pedestrian Crossing



Elevated Landscape Deck

Connecting Wai Yip Street to VTC Campus to the Promenade

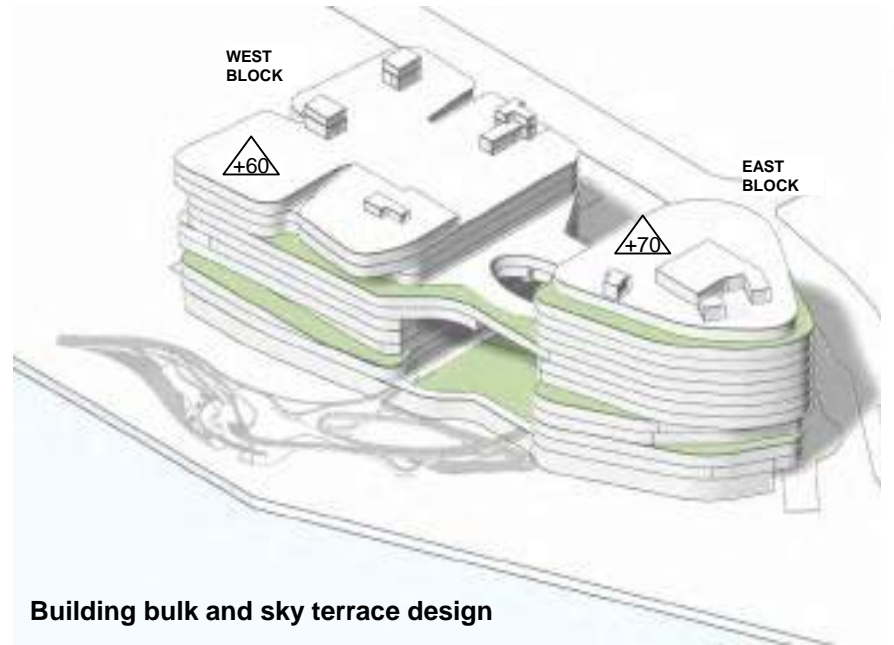


VTC Interdisciplinary Campus

Roof and Terrace Greening Design



Building roof plan



Building bulk and sky terrace design



Building section

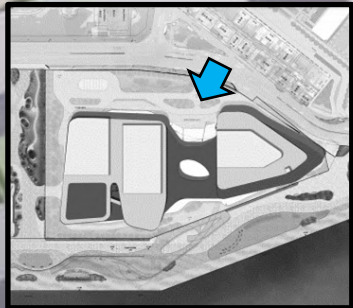
Elevated Landscape Deck

Street View from Wai Yip Street to VTC Campus



Elevated Landscape Deck

Connecting Wai Yip Street to VTC Campus

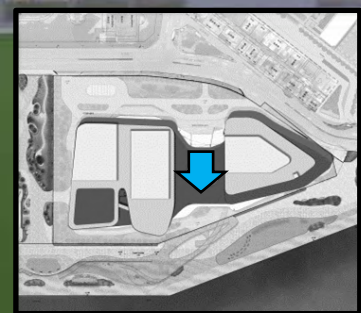


Architectural Impression



Entrance Plaza of VTC Campus

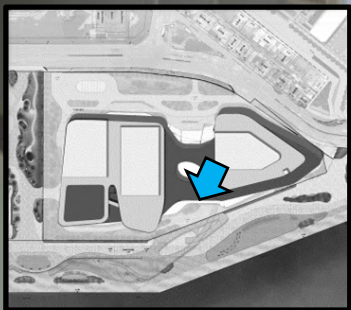
Architectural Impression



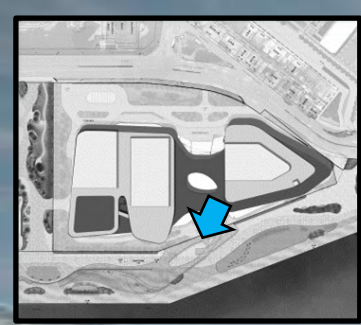
1/F Landscape Area of VTC Campus

Architectural Impression

1/F Landscape Area of VTC Campus and Elevated Landscape Deck at Promenade

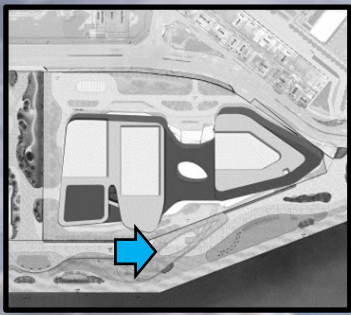


Elevated Landscape Deck at Promenade



Architectural Impression

Elevated Landscape Deck at Promenade



Architectural Impression

Elevated Landscape Deck at Promenade



Architectural Impression



Site 3: Elevated Deck & Performance Plaza

Perspective

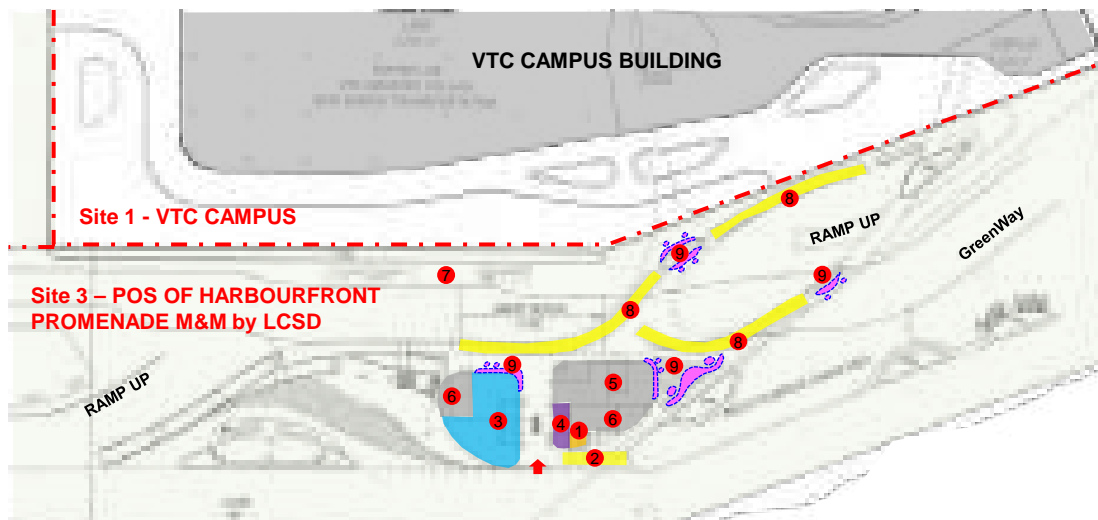


Site 3: Elevated Deck

Functions

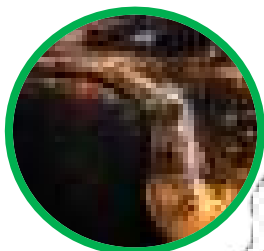
Legend

- 1 Light Refreshment Kiosk (7.5m²)
- 2 Outdoor food consumption area
- 3 Male toilet, female toilet, accessible, 2 nos. universal toilets
- 4 Baby care room, first aid room (15m²) and cleaner's store (4m²)
- 5 General store (20m²), horticultural store (50m²) and equipment room (35m²)
- 6 Plant rooms
- 7 Service yard/ laybys for service vehicles
- 8 Power & water point provisions for more future light refreshment kiosks
- 9 Undercover Seating and Table



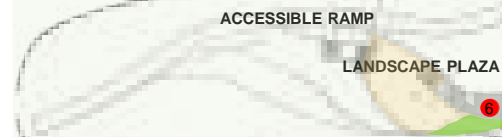
Ground floor plan

Night Vibes Hong Kong

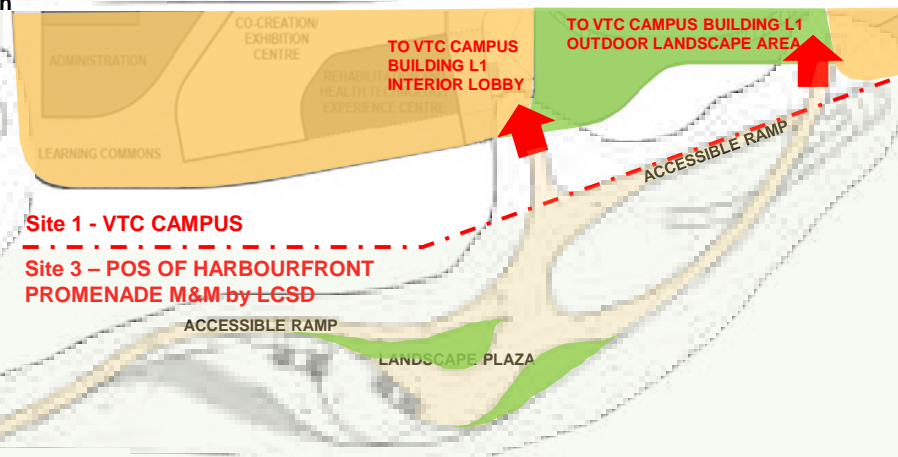


Site 1 - VTC CAMPUS

Site 3 - POS OF HARBOURFRONT
PROMENADE M&M by LCSD

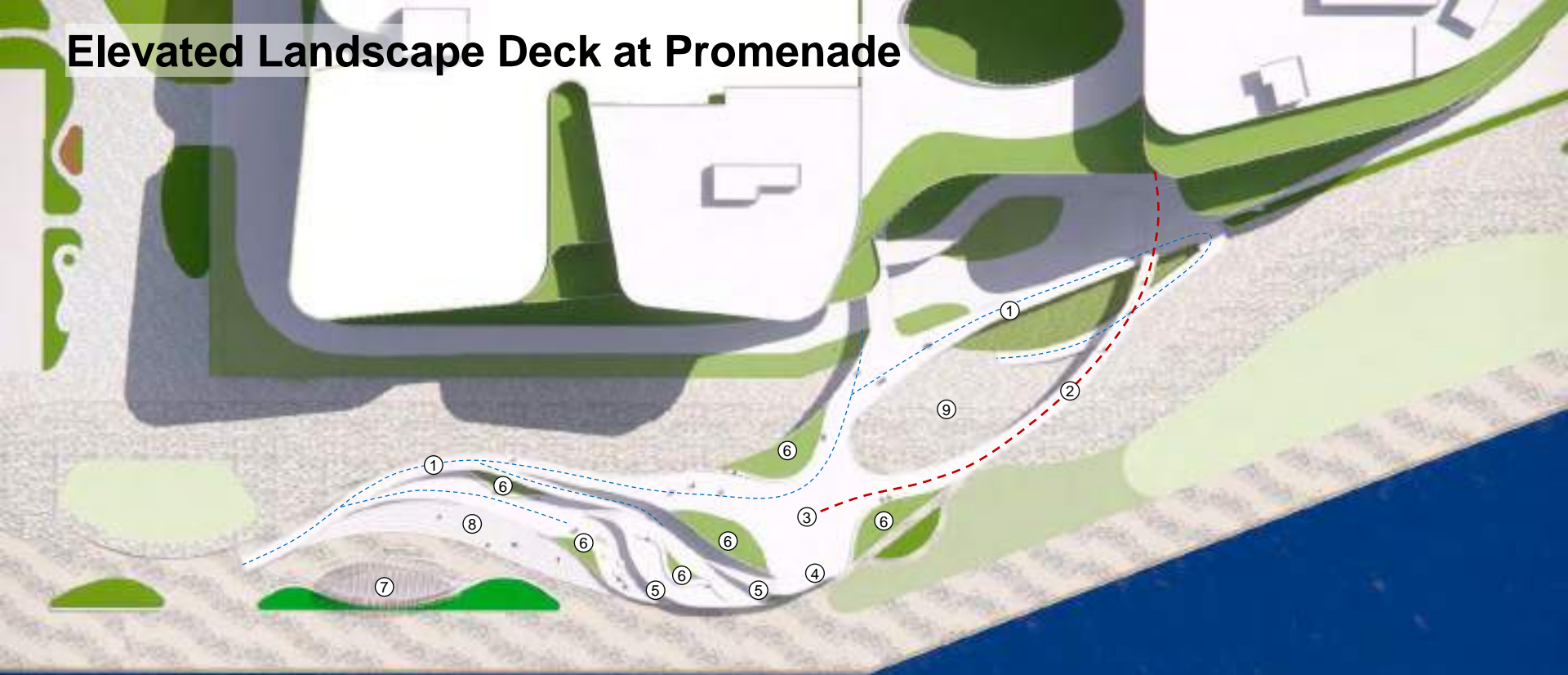


Upper Ground floor plan



1/F (roof) plan

Elevated Landscape Deck at Promenade



Legend

- 1. Accessible circulation
- 2. Elevated link bridge connection to VTC campus
- 3. Multi-purpose roof plaza
- 4. Outdoor roof harbour viewing deck

- 5. Shaded elevated harbour viewing deck
- 6. Planter with integrated outdoor seating
- 7. Covered performance plaza
- 8. Grand step / seating
- 9. Courtyard garden introduce natural day light for lower level



Viewpoint

Site 3: Multi-purpose Lawn

Perspective

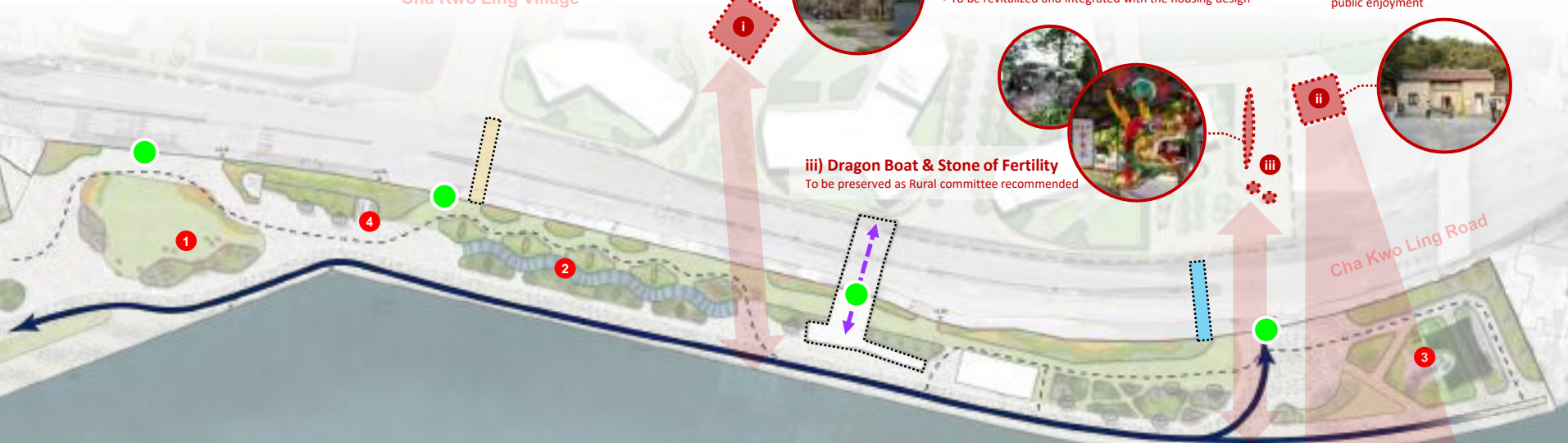


Site 3: Eastern Section

Welcoming Garden; Surfing Landform & Rock Garden



Cha Kwo Ling Village



i) Law Mansion (Grade 3 Historical Building)

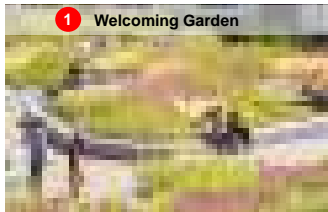
- To be preserved in-situ as AMO recommended
- To be revitalized and integrated with the housing design

ii) Tin Hau Temple (Grade 3 Historical Building)

- Not affected by the CKLV Development
- A 900sqm buffer area is designated for public enjoyment

iii) Dragon Boat & Stone of Fertility

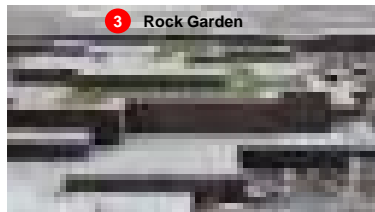
To be preserved as Rural committee recommended



1 Welcoming Garden



2 Undulating Landform

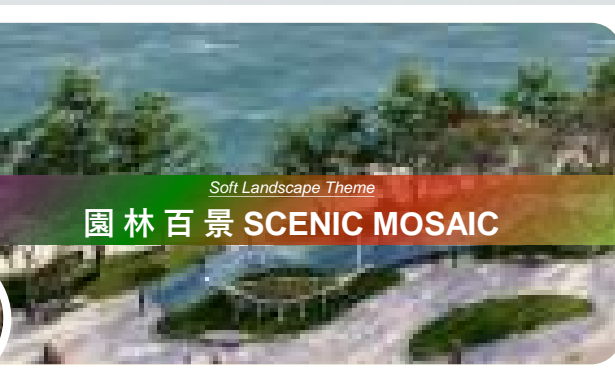
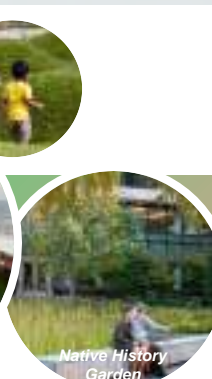
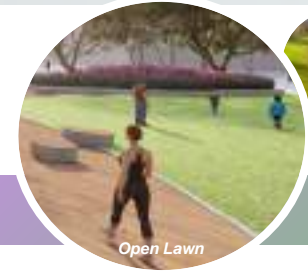
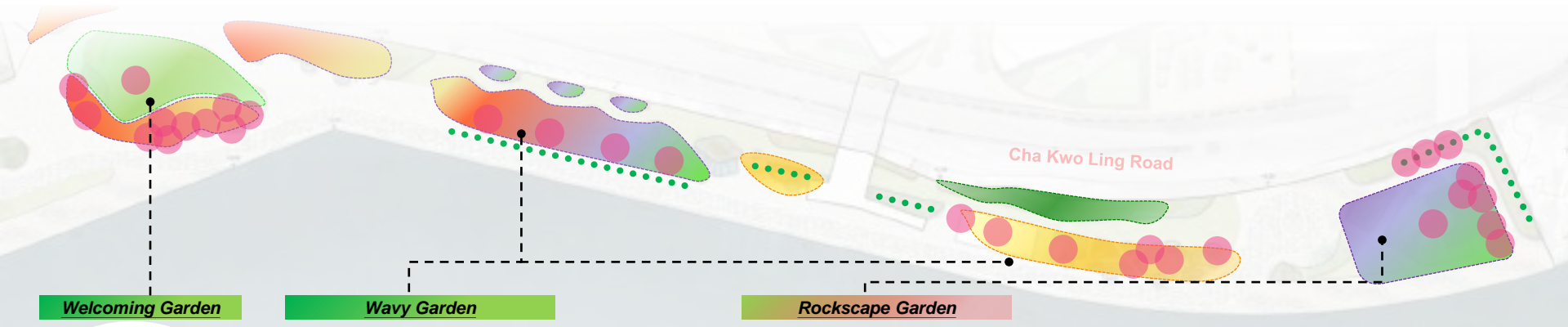


3 Rock Garden

LEGEND

	Elevated Pedestrian Circulation through VTC Campus		Existing At-grade Pedestrian Crossing
	Primary Pedestrian Circulation (At-grade)		Proposed signalized crossing & widening works (by others)
	Secondary Pedestrian Circulation (At-grade)		Indicative Location of Proposed Planned Elevated Pedestrian Crossing (by others)
	Pedestrian Access Point		Vista Corridor
			Bicycle Rack (Approx. 50 sqm)







Site 3: Botanical & Rock Garden Planting



Site 3: Botanical & Rock Garden Planting



LEGEND

-  Green Buffer Planting
-  Feature Planting Area
-  Feature Tree
-  Entrance Landscape
-  Sitting Area Planting
-  Lawn Area

Cha Kwo Ling Village

Cha Kwo Ling Road













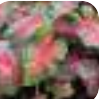
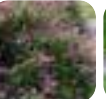


Rock Garden

Landform Edge Planting

Botanical Garden

Proposed Shrub Planting List

Proposed Feature Tree

 Rhododendron pulchrum (錦繡杜鵑)	 Miscanthus sinensis (芒草)	 Allium schoenoprasum (北葱)	 Caesalpinia pulcherrima (洋金鳳)	 Canna indica (美人蕉)	 Ficus microcarpa var. crassifolia (火山榕)	 Cosmos bipinnatus (波斯菊)	 Viburnum odoratissimum (茉莉)
 Lantana camara 'Flava' (黃花馬纓丹)	 Pennisetum setaceum Rubrum (紫葉狼尾草)	 Angelonia angustifolia (狹葉天使花)	 Calathea sanderiana 'Julia' (彩虹竹芋)	 Caladium bicolor (五彩芋)	 Cuphea hyssopifolia (細葉雪茄花)	 Phyllanthus myrsinifolius (瘤腺葉下珠)	 Axonopus compressus (地毯草)

Botanical Name	Chinese Name	Native/ Exotic	Planting Zone				
			Entrance Landscape	Green Buffer Planting	Lawn Area	Feature Planting Area	Sitting Out Area
SHRUBS							
Allium schoenoprasum	北葱	Native	v	v	v	v	
Caesalpinia pulcherrima	洋金鳳	Exotic				v	v
Canna indica	美人蕉	Exotic				v	
Ficus microcarpa var. crassifolia	火山榕	Exotic		v			v
Cosmos bipinnatus	波斯菊	Exotic				v	
Jasminum sambac	茉莉	Exotic	v	v			v
Lantana camara 'Flava'	黃花馬纓丹	Exotic	v	v			v
Pennisetum setaceum					v	v	v
Rubrum	紫葉狼尾草	Native	v			v	v
Rhododendron pulchrum	錦繡杜鵑	Exotic			v	v	v
Miscanthus sinensis	芒草	Native			v	v	
Angelonia angustifolia	狹葉天使花	Exotic	v		v	v	
Calathea sanderiana 'Julia'	彩虹竹芋	Exotic	v				
Caladium bicolor	五彩芋	Exotic	v				
Cuphea hyssopifolia	細葉雪茄花	Exotic	v	v	v	v	
Codiaeum variegatum	變葉木	Exotic	v				v
Phyllanthus myrsinifolius	瘤腺葉下珠	Exotic	v	v	v	v	v
Axonopus compressus	地毯草	Exotic	v		v		
GROUNDCOVER							

 Cassia bakeriana (花旗木)	 Tabebuia Impetiginosa (紫花風鈴木)	 Liquidambar formosana (楓香)
 Plumeria rubra (紅雞蛋花)	 Peltophorum tonkinense (銀珠)	

Cha Kwo Ling Village Historical Image (70's)

茶果嶺村舊貌 (70年代)



Viewpoint



Site 3: Welcoming Garden & Victoria Harbour Logo

Perspective



Echo Cha Kwo Ling Slipway

呼應茶果嶺橋台



Way-finding Signage

導向標示牌



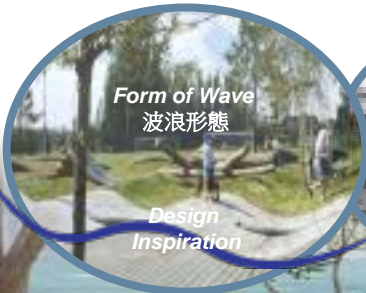


Site 3: Undulating Landform

Perspective



Echo with Cha Kwo
Ling Village History
呼應茶果嶺村歷史



Form of Wave
波浪形態

Design
Inspiration



Potential Relocation of
Hap Yi Lung (合義龍) Dragon Boat



假蘋婆
Sterculia lanceolata



龍船花
Ixora chinensis



Site 3: Undulating Landform

Perspective from Cha Kwo Ling Village





Site 3: Rock Garden

Perspective



呼應天后廟傳統
Response to Tin Hau Temple Tradition



Site 3: Rock Garden

Perspective



Stone Wall Design
石牆設計

Stone Wall of
Lawn Mansion
羅氏大屋石牆

天后古廟石牆
Stone Wall of
Tin Hau Temple



Site 3: Rock Garden

Perspective

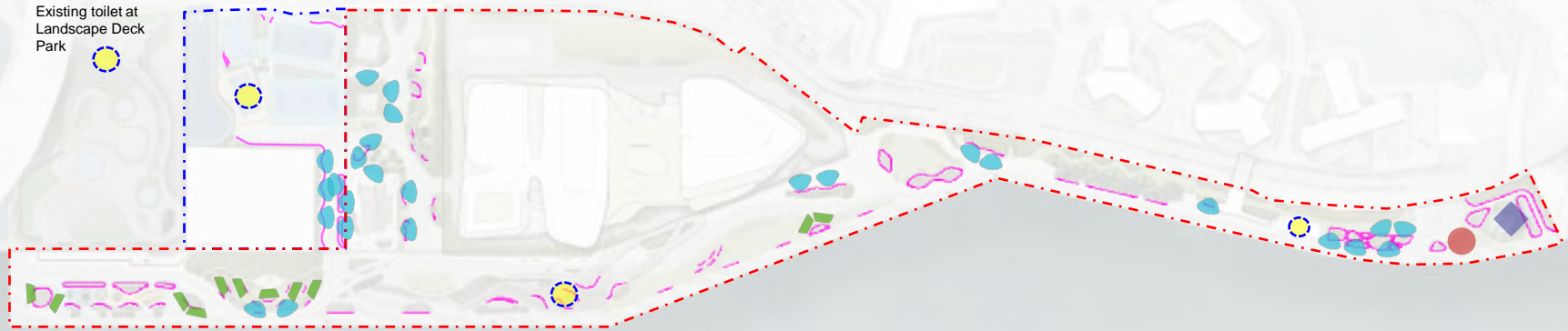


堆疊石景呼應茶果墟村落
*Rockscape as Miniature of
Cha Kwo Ling Village Cluster*



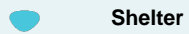
Visual Corridor

POS Facilities Summary



POS Facilities

Quantity



Shelter

26 No.



Trellis

11 No.



Look-out Shelter

1 No.



Thematic Shelter

1 No.

POS Facilities

Quantity

Seating &
Planter Seat Wall

Approx. 1670M

Table
(Integrated w/ Seat Wall)

Approx. 270 Nos.
(1 Table per 5M Seat Wall)

Table & Chair
(Under Elevated Deck)

Several sets of fixed seating
with tables at under the
elevated landscape deck

POS Facilities

Quantity



Toilet

Toilet facilities at
appropriate locations

Drinking Fountain

To be determined at later stage
*(Preferably under shelter; near active
facilities; and close to fresh water supply)*

Legend

--- Construction Works

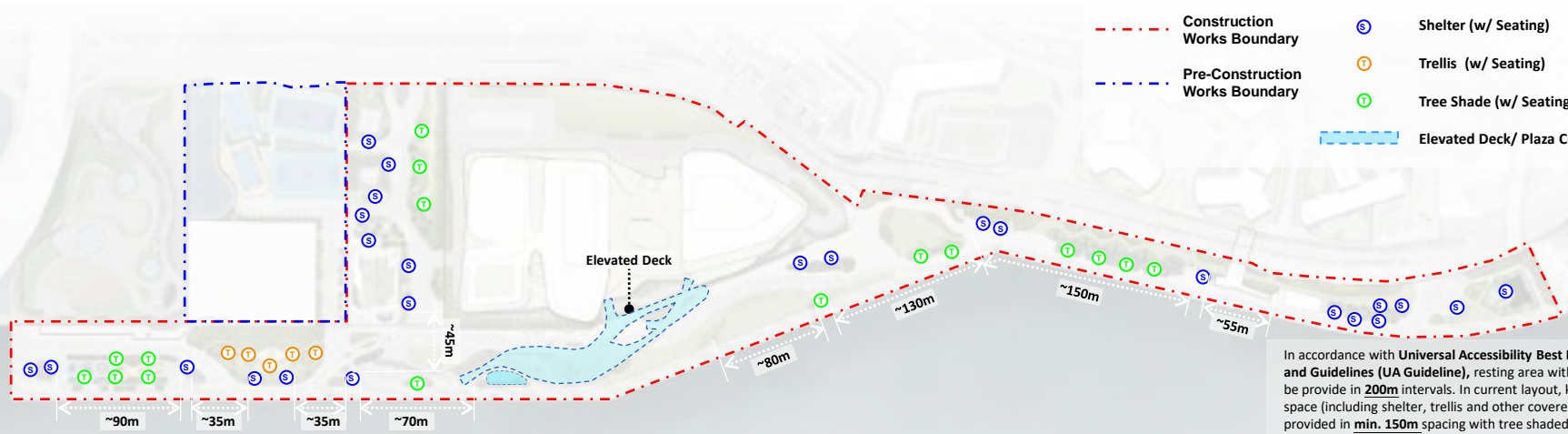
--- Pre-Construction Works

Shading Facilities Spacing



LEGEND

- - - Construction Works Boundary
- - - Pre-Construction Works Boundary
- S Shelter (w/ Seating)
- T Trellis (w/ Seating)
- T Tree Shade (w/ Seating)
- Elevated Deck/ Plaza Covered Area



In accordance with **Universal Accessibility Best Practices and Guidelines (UA Guideline)**, resting area with shade shall be provide in **200m** intervals. In current layout, key shaded space (including shelter, trellis and other covered area) will be provided in **min. 150m** spacing with tree shaded seating space in between.

T Soft-shaded Space (w/ Seating)

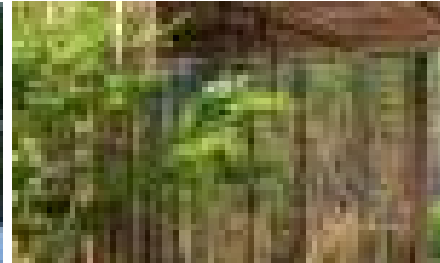


Hard-shaded Space

S Shelter (w/ Seating)



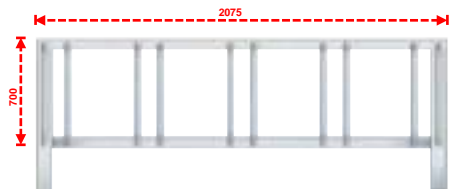
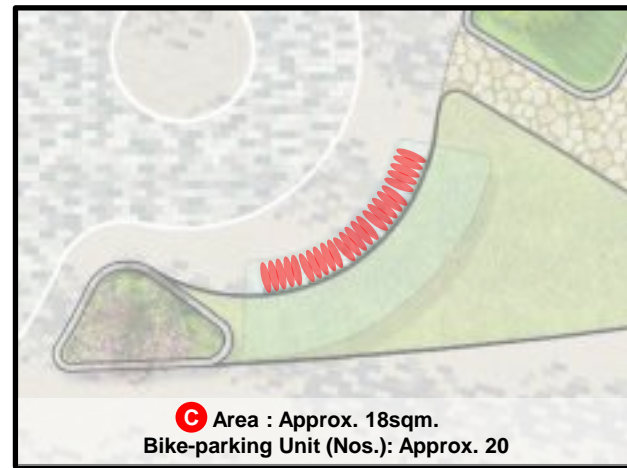
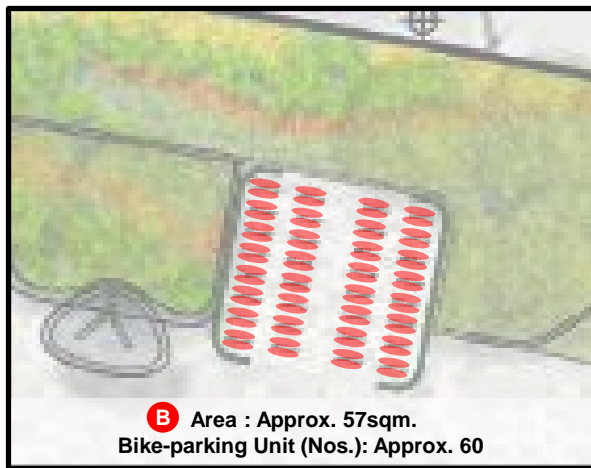
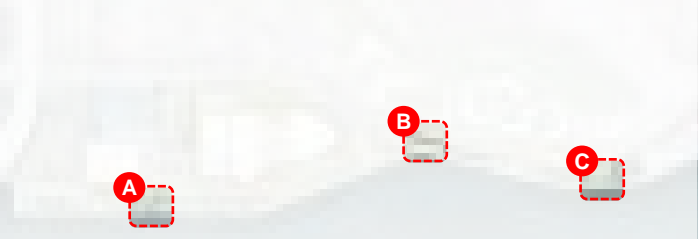
T Trellis (w/ Seating)



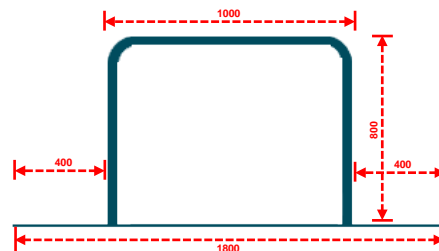
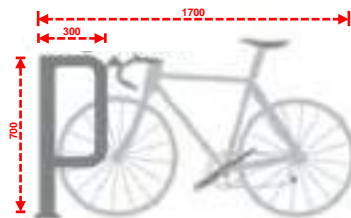
Elevated Deck Covered Area



Bike-parking Facilities



Single-side Bike-parking Space



Two-sided Bike-parking Space



Landscape Furniture Design

Shelter; Trellis & Seawall Railing

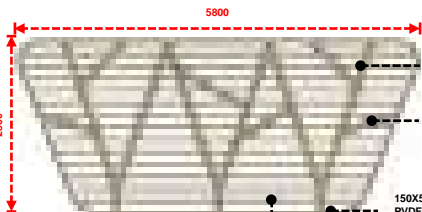


- COMPOSITE TIMBER HANDRAIL
- S.S. BALUSTRADE UPSTAND
- HORIZONTAL S.S. CHS



To Kwa Wan Promenade, 2023

SEAWALL RAILING DESIGN



150X100mm RHS GMS MAIN FRAME PVDF COATING
COLOUR : MEDIUM BEIGE

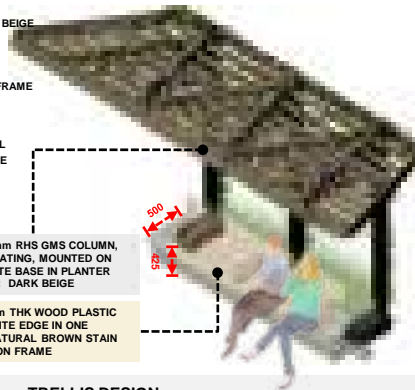
100X5mm THK. GMS TOP PLATE PVDF COATING
COLOUR : MEDIUM BEIGE

150X50mm RHS MAIN FRAME PVDF COATING
COLOUR MEDIUM BEIGE

50X150mm RHS GMS PANEL W/ PATTERN MEDIUM BEIGE PVDF COATING

200x100mm RHS GMS COLUMN, PVDF COATING, MOUNTED ON CONCRETE BASE IN PLANTER
COLOUR: DARK BEIGE

100x25mm THK WOOD PLASTIC COMPOSITE EDGE IN ONE PIECE NATURAL BROWN STAIN MOUND ON FRAME



TRELLIS DESIGN

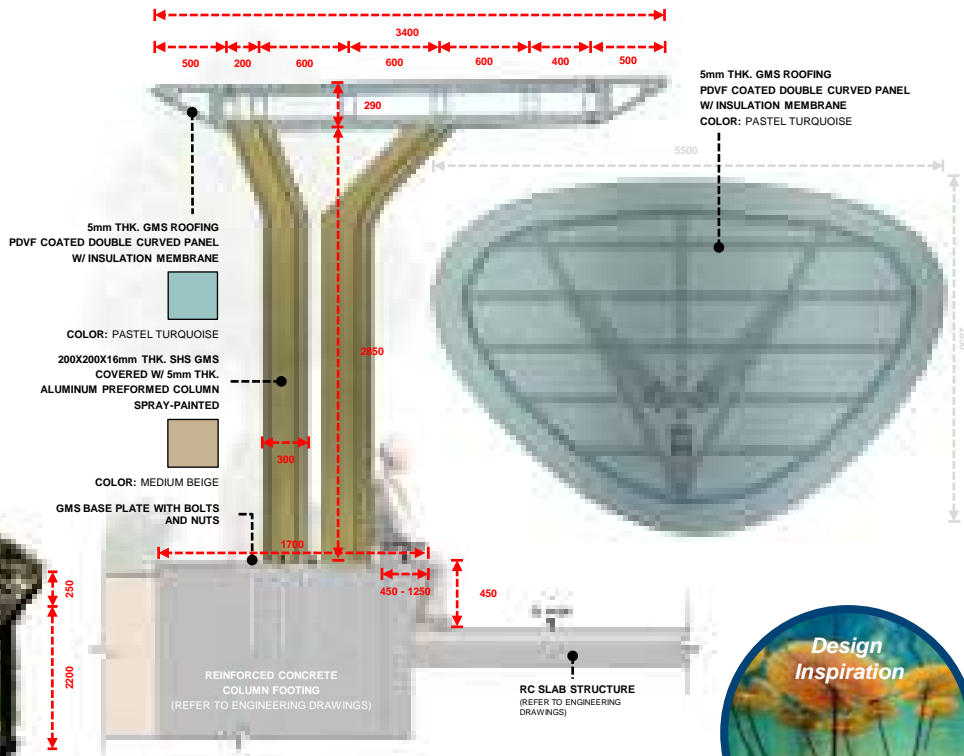


Design Inspiration

樹枝形態

Ice Cracks Pattern

冰裂紋



5mm THK. GMS ROOFING
PVDF COATED DOUBLE CURVED PANEL
W/ INSULATION MEMBRANE
COLOR: PASTEL TURQUOISE

5mm THK. GMS ROOFING
PVDF COATED DOUBLE CURVED PANEL
W/ INSULATION MEMBRANE

COLOR: PASTEL TURQUOISE

200X200X16mm THK. SHS GMS COVERED W/ 5mm THK. ALUMINUM PREFORMED COLUMN SPRAY-PAINTED

COLOR: MEDIUM BEIGE

GMS BASE PLATE WITH BOLTS AND NUTS

REINFORCED CONCRETE COLUMN FOOTING
(REFER TO ENGINEERING DRAWINGS)

RC SLAB STRUCTURE
(REFER TO ENGINEERING DRAWINGS)

SHELTER DESIGN



Design Inspiration

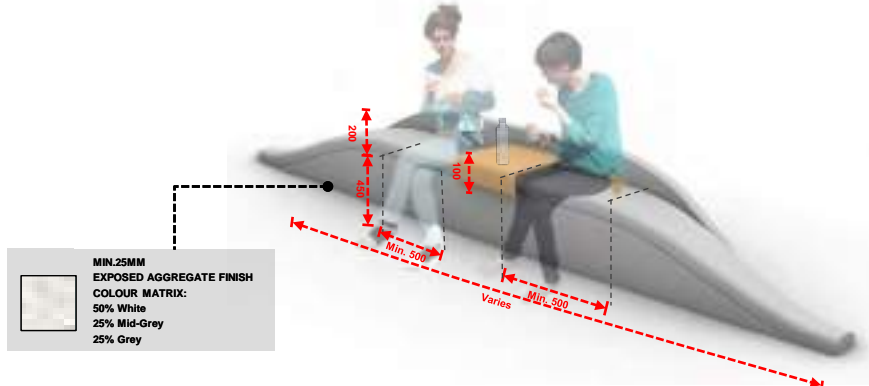
Form of Lotus Leaf

荷葉形態



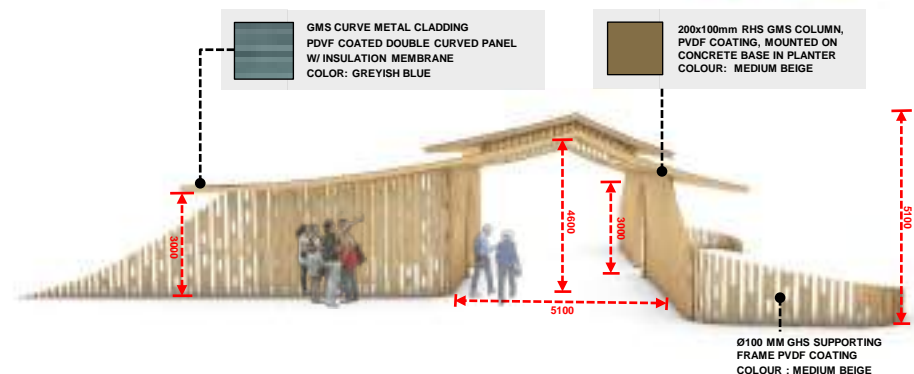
Landscape Furniture Design

Integrated Seat Wall; Lookout Shelter & Thematic Shelter



MIN.25MM
EXPOSED AGGREGATE FINISH
COLOUR MATRIX:
50% White
25% Mid-Grey
25% Grey

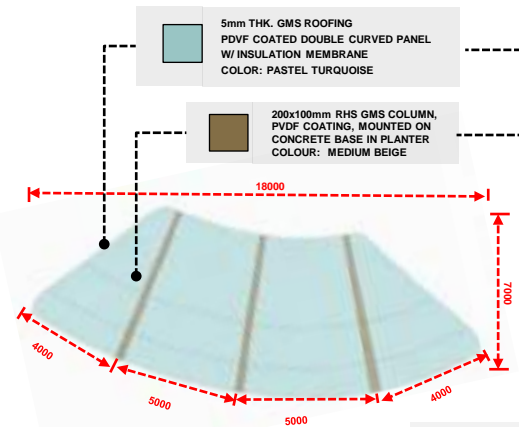
INTEGRATED SEAT WALL DESIGN



GMS CURVE METAL CLADDING
PVDF COATED DOUBLE CURVED PANEL
W/INSULATION MEMBRANE
COLOR: GREYISH BLUE

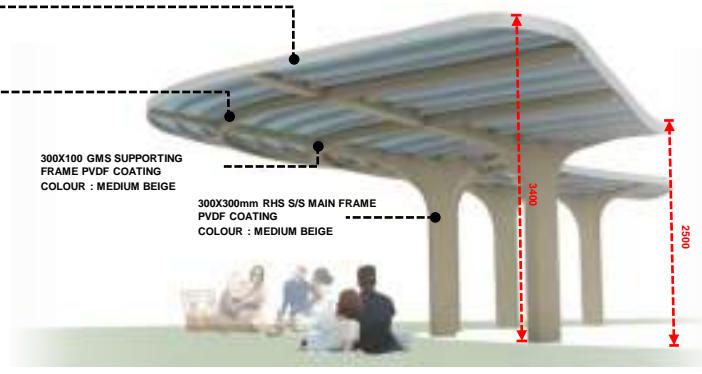
200x100mm RHS GMS COLUMN,
PVDF COATING, MOUNTED ON
CONCRETE BASE IN PLANTER
COLOUR: MEDIUM BEIGE

Ø100 MM GMS SUPPORTING
FRAME PVDF COATING
COLOUR : MEDIUM BEIGE



5mm THK. GMS ROOFING
PVDF COATED DOUBLE CURVED PANEL
W/INSULATION MEMBRANE
COLOR: PASTEL TURQUOISE

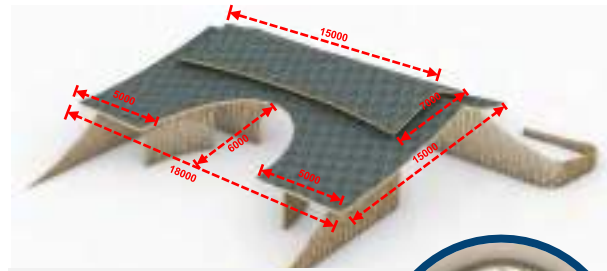
200x100mm RHS GMS COLUMN,
PVDF COATING, MOUNTED ON
CONCRETE BASE IN PLANTER
COLOUR: MEDIUM BEIGE



300X100 GMS SUPPORTING
FRAME PVDF COATING
COLOUR : MEDIUM BEIGE

300X300mm RHS S/S MAIN FRAME
PVDF COATING
COLOUR : MEDIUM BEIGE

LOOK OUT SHELTER DESIGN

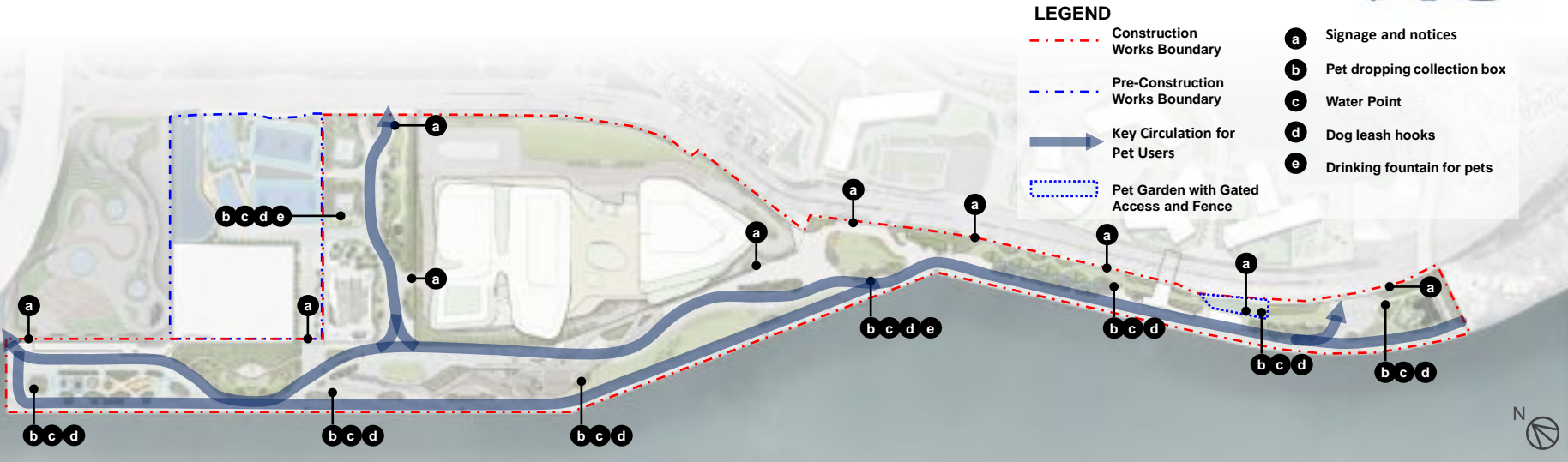


THEMATIC SHELTER DESIGN



Inclusive Park for Pets/ Pet Garden

Overall Design Approach



Pet Facilities

a Signage & Notices



At POS Entrance

b Pet Dropping Collection Box



Approx. 300m Interval

c Water Points



Approx. 300m Interval

d Dog Leash Hooks



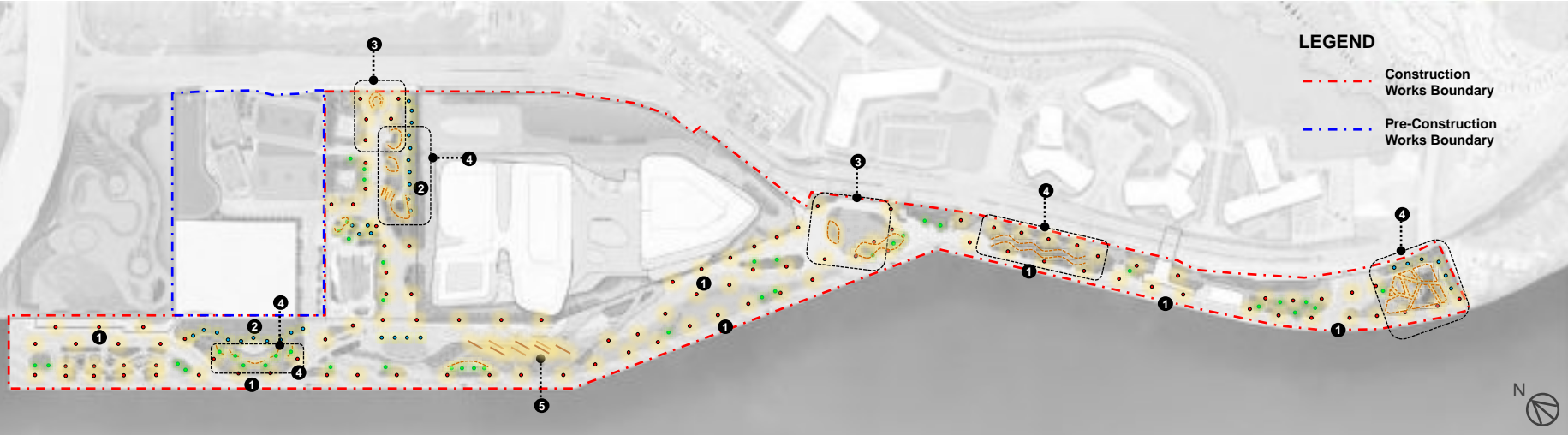
Approx. 300m Interval

e Drinking Fountain for Pets



Close to Toilet/ Ancillary Facilities

Lighting Design Intent



<p>1 Typical Promenade lighting</p>	<p>3 Entrance lighting</p>	<p>5 Under Deck decorative lighting</p>	<p>General External lighting</p>					
<p>2 Typical Garden/ Secondary Path lighting</p>	<p>4 Feature Landscape Area Lighting</p>		<p>• Typical Pole Lighting</p>	<p>• Bollard Lighting</p>	<p>Downlight (shelter/ Canopy)</p>	<p>Lighting Stripe</p>	<p>Tree Up-light</p>	<p>↳ Inground recessed Lighting</p>

Overview of Site Coverage of Greenery (SCG)



Site 4 - Re-provision of Soccer Pitches & POS (Pre-construction works)

Proposed 7% SCG

- Min. required SCG of **20%** according to DevB TC(W) No.3/2012 and PNAP APP No.152
- According to HKPSG Chapter 4, as general guidelines for designing public open space, at least **20%** of the land in active open space should be for soft landscaping.

Site 2 - 1 Ha POS

Proposed 30% SCG

- According to Annex 11 of the CPLD Paper No. 25/11, a greening ratio of **35%** of the total site area should be applied for District Open Space (DO) at Cha Kwo Ling Waterfront
- According to HKPSG Chapter 4, as general guidelines for designing public open space, at least **20%** of the land in active open space should be for soft landscaping.

Site 1 - VTC campus

Proposed overall min. 30% SCG, greening at pedestrian zone for at least 20% of the site area, and roof greening of at least 2% of the total roof area.

- Above proposed greening provision follows the greening requirement endorsed by CPLD (Paper No. 25/11 submitted by CEDD) on 3.5.2011 in order to achieve the planning intention of developing Kai Tak.

Site 3 - Approx. 4.5Ha POS of Harbourfront Promenade

Proposed 30% SCG (25% if further enhance hardscape for event use)

- According to Annex 11 of the CPLD Paper No. 25/11, a greening ratio of **40%** of the total site area should be applied for waterfront promenade at Cha Kwo Ling waterfront.
- According to HKPSG Chapter 4, as general guidelines for designing public open space, at least **20%** of the land in active open space should be for soft landscaping.



LEGEND

- Planting Area
- Construction Works
- Pre-Construction Works

Remarks: Special approval of relaxation of the minimum greening requirement will be sought from DEVB.





Tree Planting Arrangement



Botanical Name	Chinese Name	Size (mm) Height x Spread	Spacing (mm)	Remarks
Feature Tree				
<i>Cassia bakeriana</i>	花旗木	Heavy Standard: 4000 x 3000	5000	-
<i>Peltophorum tonkinense</i>	銀珠	Heavy Standard: 4000 x 3000	5000	GMP & STSG
<i>Plumeria rubra</i>	紅雞蛋花	Heavy Standard: 3500 x 2500	5000	GMP & STSG
<i>Tabebuia impetiginosa</i>	紫花風鈴木	Heavy Standard: 4000 x 3000	5000	GMP
<i>Liquidambar formosana</i>	楓香	Heavy Standard: 4000 x 3000	5000	Native
Canopy & Buffer Tree				
<i>Cleistocalyx nervosum</i>	水翁	Heavy Standard: 4000 x 3000	5000	Native, GMP & STSG
<i>Creteva unilocularis</i>	樹頭菜	Heavy Standard: 4000 x 3000	5000	-
<i>Elaeocarpus chinensis</i>	中華杜英	Heavy Standard: 4000 x 3000	5000	Native, GMP & STSG
<i>Pongamia pinnata</i>	水黃皮	Heavy Standard: 4000 x 3000	5000	Native, GMP & STSG
<i>Bischofia javanica</i>	秋楓	Heavy Standard: 4000 x 3000	5000	Native

Overview of Building Facilities & Maintenance Laybys



Pre-construction works – Re-provisioning of the POS and the temporary soccer pitch (not for comment)

- A** Male, female, accessible, universal toilets, baby care room, first aid room, refuse collection chamber and plant rooms
- B** Surface parking/layby
 - 1 no. of refuse collection vehicle space 12m (L) x 5m (W)
 - 1 no. of heavy goods vehicle space 11m (L) x 3.5m (W)
 - 1 no. of ambulance space 9m (L) x 3m(W)

1 Ha POS:

- a** Skatepark
- b** Management office & refuse collection chamber
- c** Stores, equipment room and plant rooms
- d** Surface parking/layby
 - 1 no. of light goods vehicle space 7m (L) x 3.5m (W)
 - 1 no. of refuse collection vehicle space 12m(L) x 5m(W)

Approximate 4.5Ha POS of Harbourfront Promenade

- 1** Light refreshment kiosk and provisions for future more F&B kiosks
- 2** Male, female, accessible, universal toilets, baby care room and first aid room
- 3** Stores, equipment room
- 4** Plant rooms
- 5** Additional toilet at eastern portion of promenade
- 6** Indicative location of proposed planned elevated pedestrian crossing (by others)
- 7** Surface parking/layby
 - 2 no. of light goods vehicle space 7m (L) x 3.5m (W)
 - 1 no. of ambulance space 9m (L) x 3m(W)



Remarks:

- Inclusive Park for Pets to be provided according to LCSD SoA.

Legend

- - - Construction Works
- - - Pre-Construction Works





THANK YOU

ARUP  P&T GROUP  DLR GROUP ennead **AECOM**