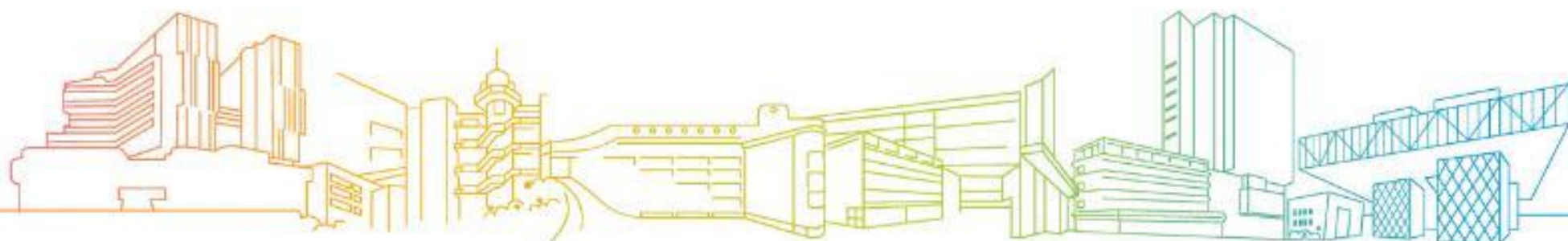


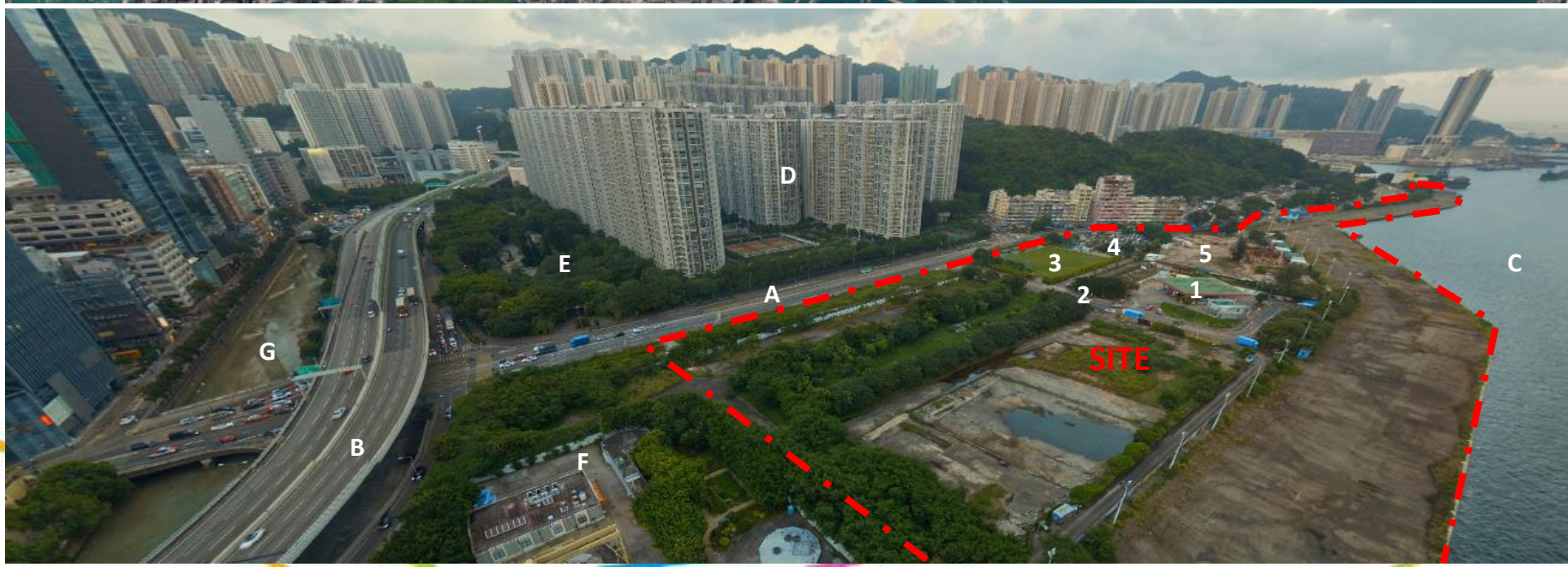


**Proposed Development of New Campus of Vocational Training Council  
at Kowloon East (Cha Kwo Ling)**

**Consultation with the Task Force on Kai Tak Harbourfront Development  
1 November 2021**



# Site Location and Context



## Within Site Boundary

1. LPG Filling Station (to be re-provided)
2. Wai Lok Street (to be relocated)
3. Temporary Soccer Pitch (to be re-provided)
4. Open Car Park (to be demolished)
5. CIC Training Ground (to be demolished)

## Site Context nearby

- A. Wai Yip Street
- B. Kwun Tong By-pass
- C. Victoria Harbour
- D. Laguna City
- E. Laguna Park
- F. DSD Pumping Station
- G. Tsui Ping River



# Previous Proposed Master Layout Plan



2017



2017



Re-provision of Open Space    Road relocation    New VTC campus    Waterfront promenade (by others)

Re-provision of Open Space    Road relocation    1 Ha Public Open Space    New VTC campus    Waterfront promenade (by others)


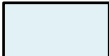

## Design enhancements in 2017:

- 1 GFA of VTC building reduced by about 22%
- 2 Additional 1 Ha Public Open Space
- 3 Re-provision of Public Open Space / Soccer Pitch
- 4 Increase building setback from Wai Yip Street

Harbour Planning Principles	
▪	Sustainable development – Urban design
▪	Integrated planning – Interfacing with infrastructure
▪	Accessible harbour – Physical Connectivity
▪	Vibrant harbour – Spatial Connectivity
▪	Proactive harbor enhancement – Visual Connectivity
✓	Public enjoyment – Setback & public consultation

# Programme

## Legend

-  Tentative consultation timeline
-  Tentative pre-construction works timeline
-  Tentative construction works timeline



Schedule	Actions
Q4 2021	EDB and DEVB together with VTC will consult the Harbourfront Commission and conduct local engagement exercises, including the Kwun Tong District Council & Housing, Planning and Lands Committee <ul style="list-style-type: none"> <li>▪ HC Meeting: 1 Nov 2021</li> <li>▪ DC Meeting: 16 Nov 2021 (tentative)</li> </ul>
Q4 2021	To consult the Town Planning Board
Q1 2022	To consult the Education Panel of the Legislative Council on the funding approval for pre-construction works
Q1 2022	To consult the Public Works Subcommittee of the Legislative Council on the funding approval for pre-construction works
Q2 2022	To consult the Finance Committee of the Legislative Council on the funding approval for pre-construction works
Q3 2022	Award of consultancy contract / Signing of entrustment agreement
Q3 2022	Commencement of pre-construction works
Q4 2024	To consult the LegCo on the funding approval for main-construction works
Q1 2025	Completion of pre-construction works
Q1 2025	Commencement of main-construction works (including Harbourfront Promenade upon completion of Trunk Road T2 Works and subsequent site handover)
Q4 2027	Completion of <b>Phase 1 Waterfront Promenade</b> works (subject to DSD's development programme)
Q3 2030	Completion of main construction works (completion of the <b>whole Waterfront Promenade</b> works)
End 2030	Commissioning of facilities for main-construction works

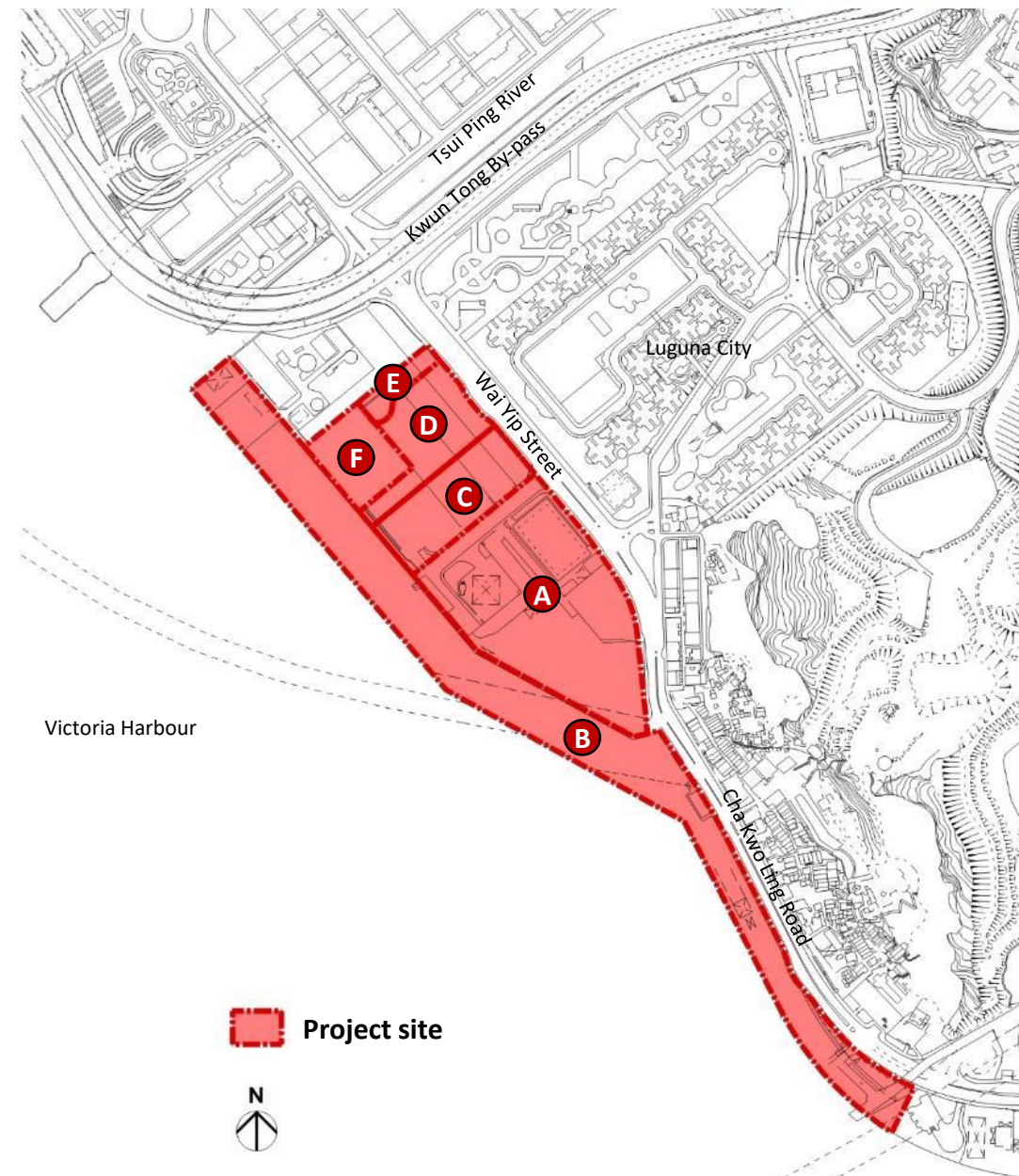
# Project Scope

## Construction Works

- A** A new multi-disciplinary campus of VTC to accommodate about 6,000 students (height restriction +60 & +70mPD)
  - Authentic training facilities
  - Academic facilities
  - Student amenities facilities
- B** Approximate 4.5 Ha public open space of waterfront promenade
- C** 1 Ha public open space
  - Skatepark (1,600 sq.m.)

## Pre-construction Works

- D** Re-provision of public open space
  - 2 nos. 5-a-side soccer pitches (co-use with handball)
  - 2 nos. standard basketball/ volleyball courts
  - Spectator stand with ancillary facilities
- E** Relocation of Wai Lok Street
- F** Re-provision of LPG filling station (design and works to be carried out by others)





# Urban Design Concept



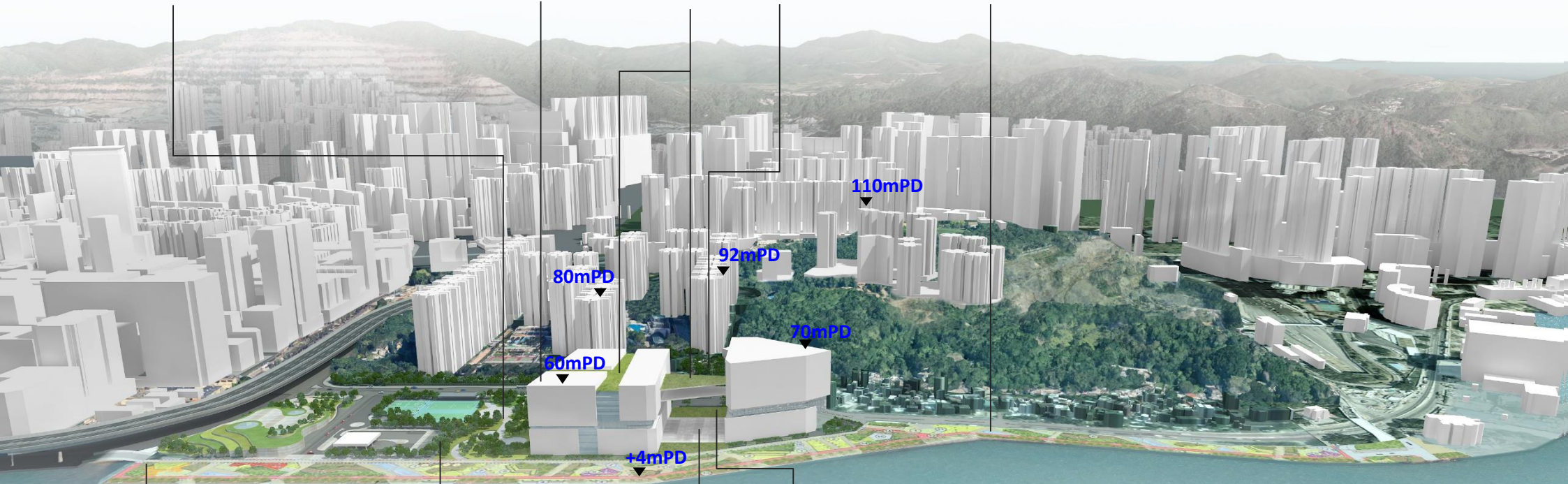
Open space connection to the waterfront

Stepped building height in urban scale

Multi-level green roof

Building separation

Promenade enjoyment enhancement



Connectivity to adjacent open space development

Extensive greening

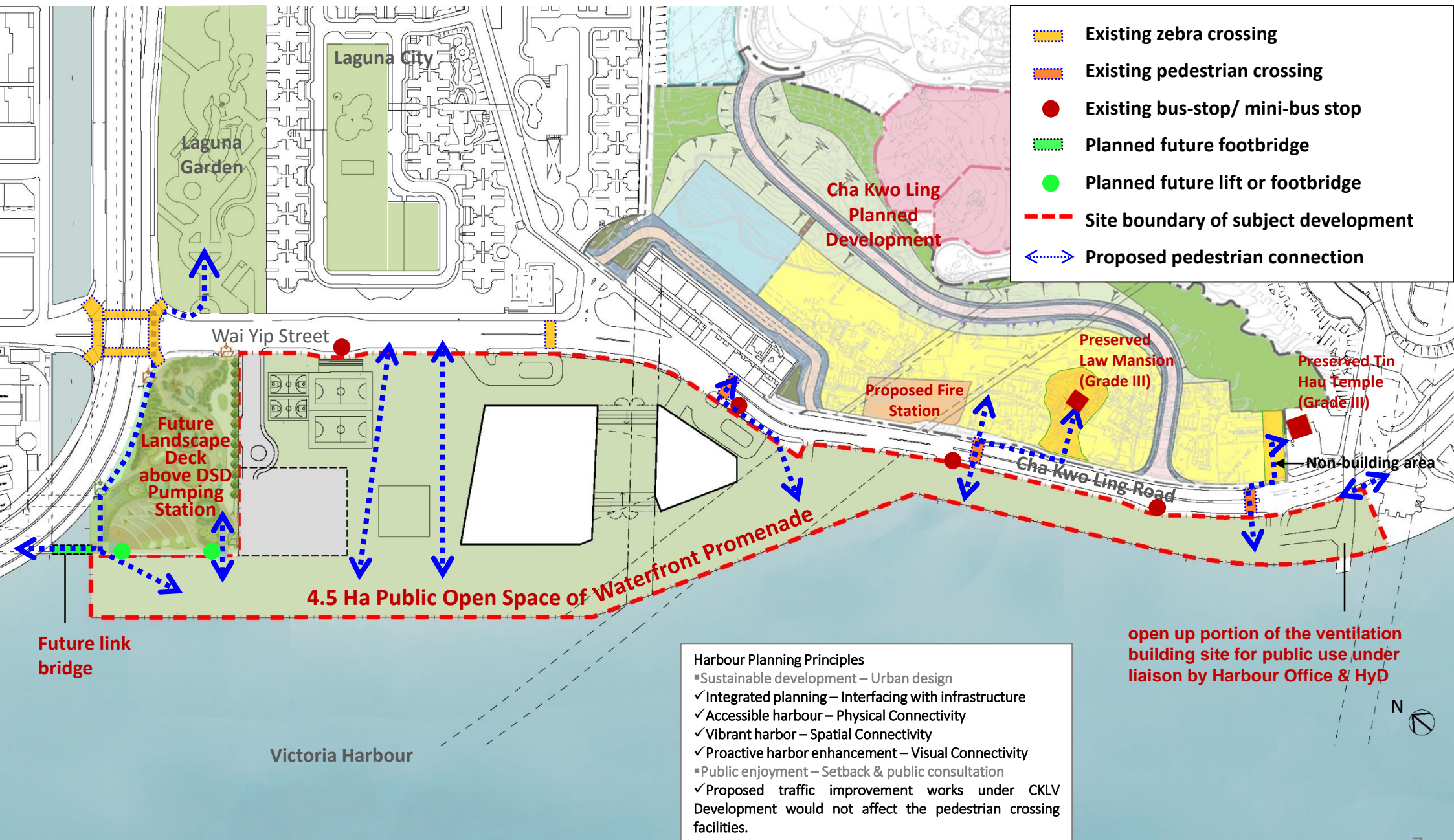
Built topography integrate with open space design

Permeable building form





# Connectivity Enhancement - Physical Connectivity



THANK YOU !