



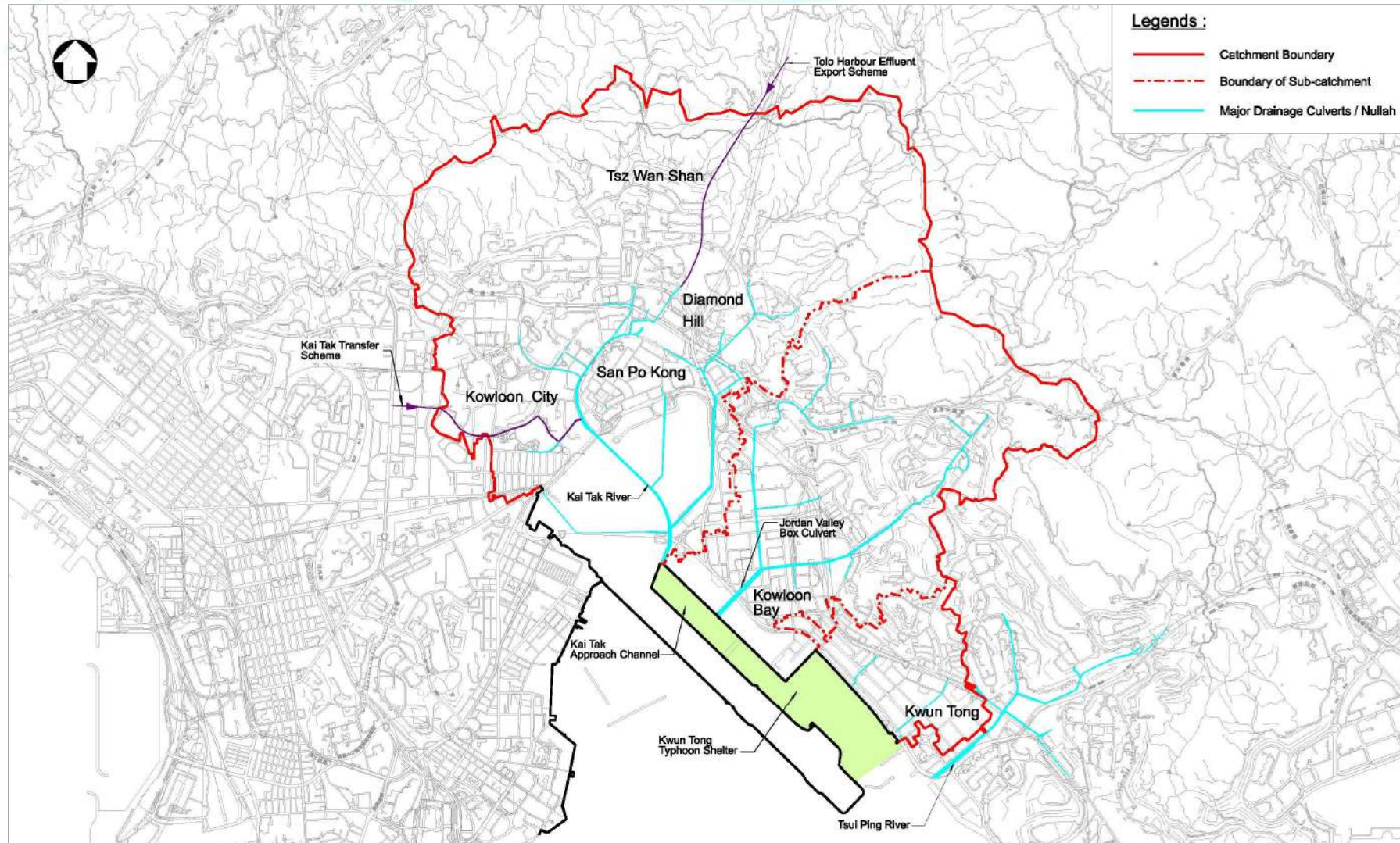
# **Task Force on Kai Tak Harbourfront Development 39<sup>th</sup> Meeting**

**14 April 2021**

**AOB – Update on Water Quality  
in Kai Tak Approach Channel  
and Kwun Tong Typhoon Shelter**

# I. Water Quality at KTAC/KTTS

## The Catchment for Water Body for KTAC and KTTS



# I. KTD EIA – Water Quality Improvement at KTAC and KTTS

## Mitigation Measures under KTD for EIA:

- Rectification of identified expedient connections and interception of polluted discharges from hinterland
- Dredging / bio-remediation treatment of sediments
- Interception and Pumping Scheme (to replace 600m Opening) – endorsed by Kai Tak Steering Group on 4.6.2015

Substantially completed by July 2014

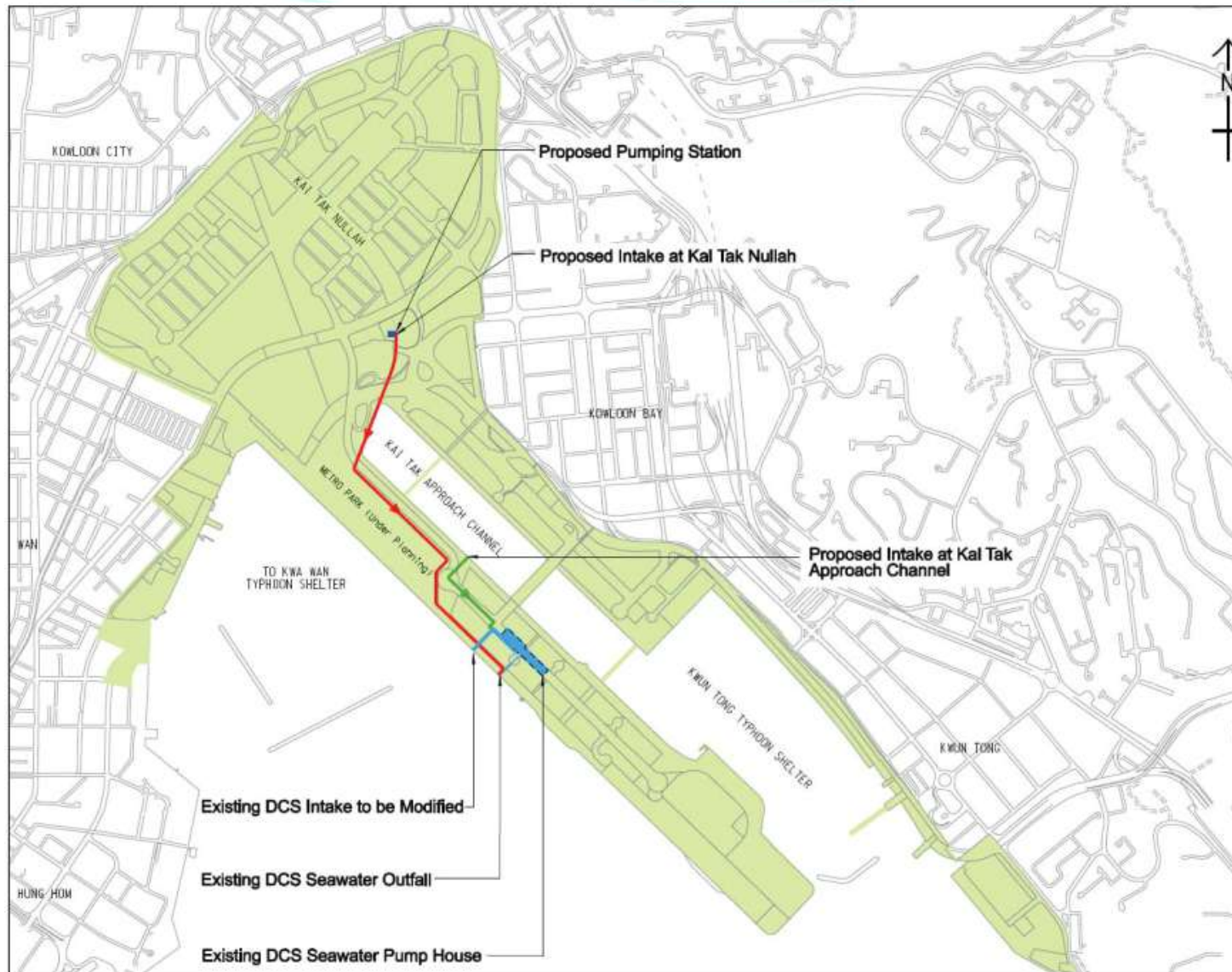
Planned for completion in 2023



\* Remark: The IPS achieves similar performance as the 600m Opening



# I. Water Quality at KTAC/KTTS Interception and Pumping (IP) Scheme



# I. Water Quality at KTAC/KTTS E.Coli Monitoring Data (Up to end of 2020)

*E.coli* Counts / 100ml (annual geometric mean)

Year		KTAC							KTTS				
		AC1	AC2	AC3	AC4	AC5	AC6	AC7	KT1	KT2	KT3A	KT3B	KT3C
2014	Annual	7,900	6,600	4,200	4,500	2,800	2,600	1,800	600				
2015	Annual	5,500	2,200	2,500	1,500	1,200	1,000	610	350				
2016	Annual	10,100	8,500	7,400	4,900	3,800	4,900	2,200	1200	910	620		
2017	Annual	1,270	1,500	1,140	930	810	680	480	260	320	150	180	280
2018	Annual	542	462	399	389	351	391	129	95	88	74	67	71
2019	Annual	1,694	1,992	2,361	2,041	1,826	2,257	1,463	319	310	624	440	428
2020	Annual	3,683	4,160	3,654	3,626	3,614	4,638	1,950	591	687	696	547	618

## Requirement for water sports:

*(making reference to water quality objectives for secondary contact recreation specified under WPCO)*

***E.coli* ≤ 610 counts/100 ml (annual geometric mean)**

- AC1 – monitoring station at KTAC
- KT1 – monitoring station at KTTS

