

Harbourfront Commission

Presentation

Dec 2020

New Acute Hospital

at Kai Tak Development Area



醫院管理局
HOSPITAL
AUTHORITY

ARUP

WT WONG TUNG & PARTNERS LIMITED
ARCHITECTS & PLANNERS

lok

urbis

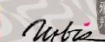
MEINHARDT

wsp

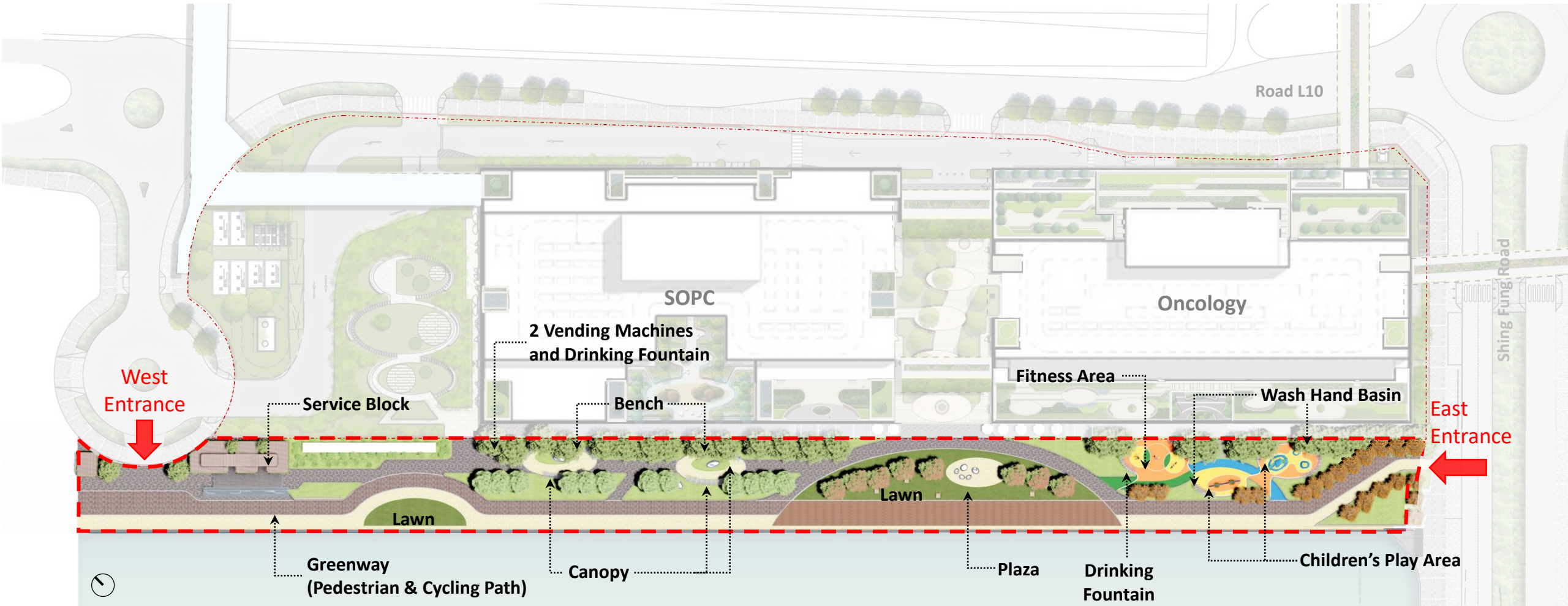
RLB
利比
Ryder
Levett
Bucknall

Comments from Previous Meeting 03 Sep 2020

1. Design not coherent with the HKCH promenade
2. Interface treatment with the hospital block, in particular the leftmost corner of the SOPC.
3. The design of service block and toilet is too bulky.
4. Inadequate shelters and seating
5. Unclear Connectivity of the NAH promenade to adjacent development, in particular the undesirable location of crossing to HKCH promenade



Promenade – Master Plan

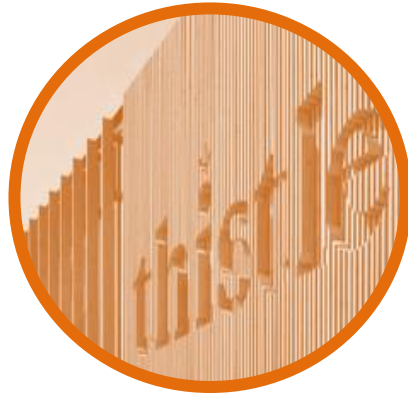


Features

- 40% Greenery of Site Area
- Main Lawn Area
- Seating Area
- Canopy
- Fitness Area
- Children's Play Area
- 2 nos. Wash Hand Basin (near Children's Play Area)
- 2 sets of Drinking Fountain
- 1 set of Vending Machine

Promenade – Landscape Zoning

LEISURE Node:
a waiting point for group gathering



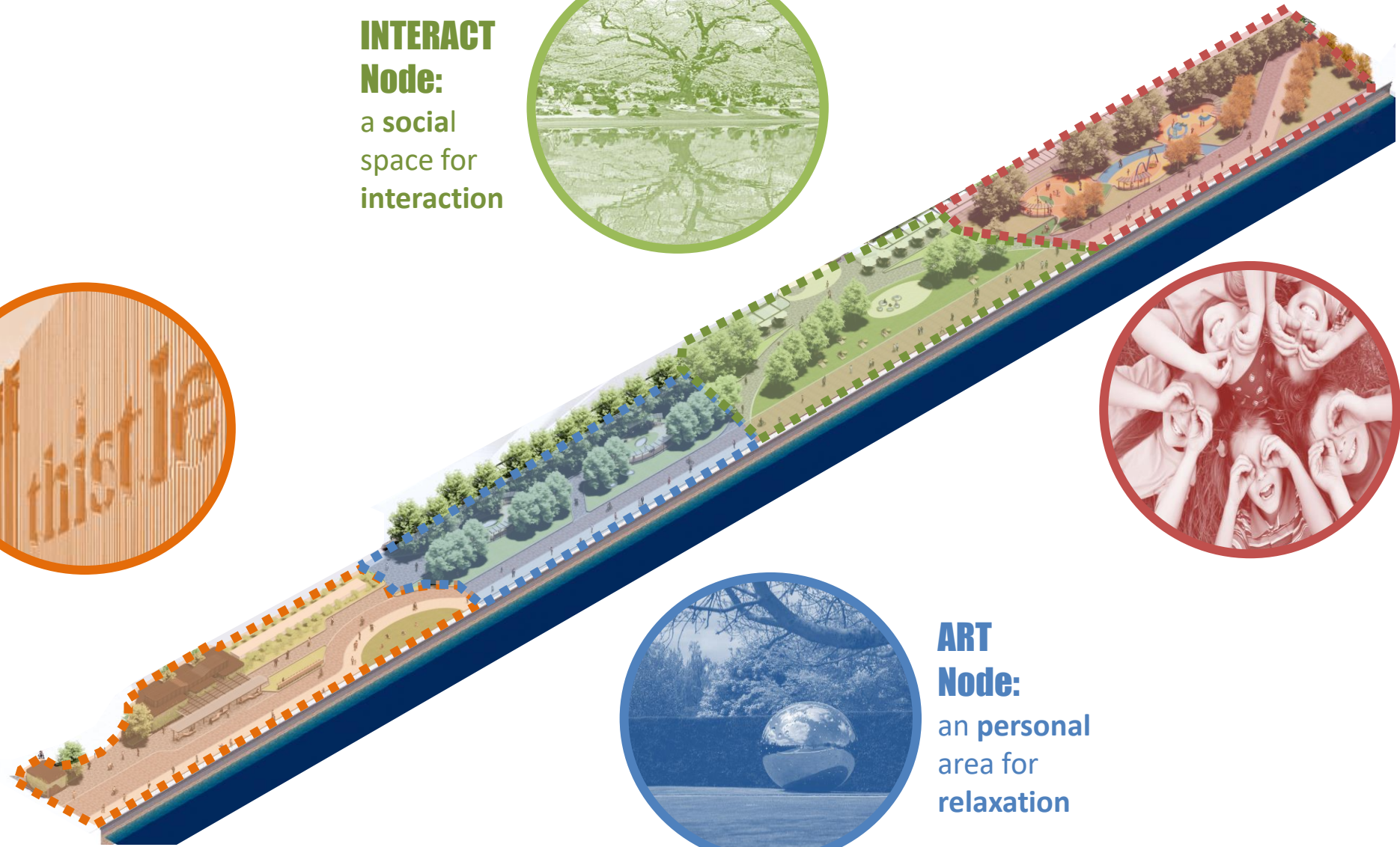
INTERACT Node:
a social space for interaction



ART Node:
an personal area for relaxation

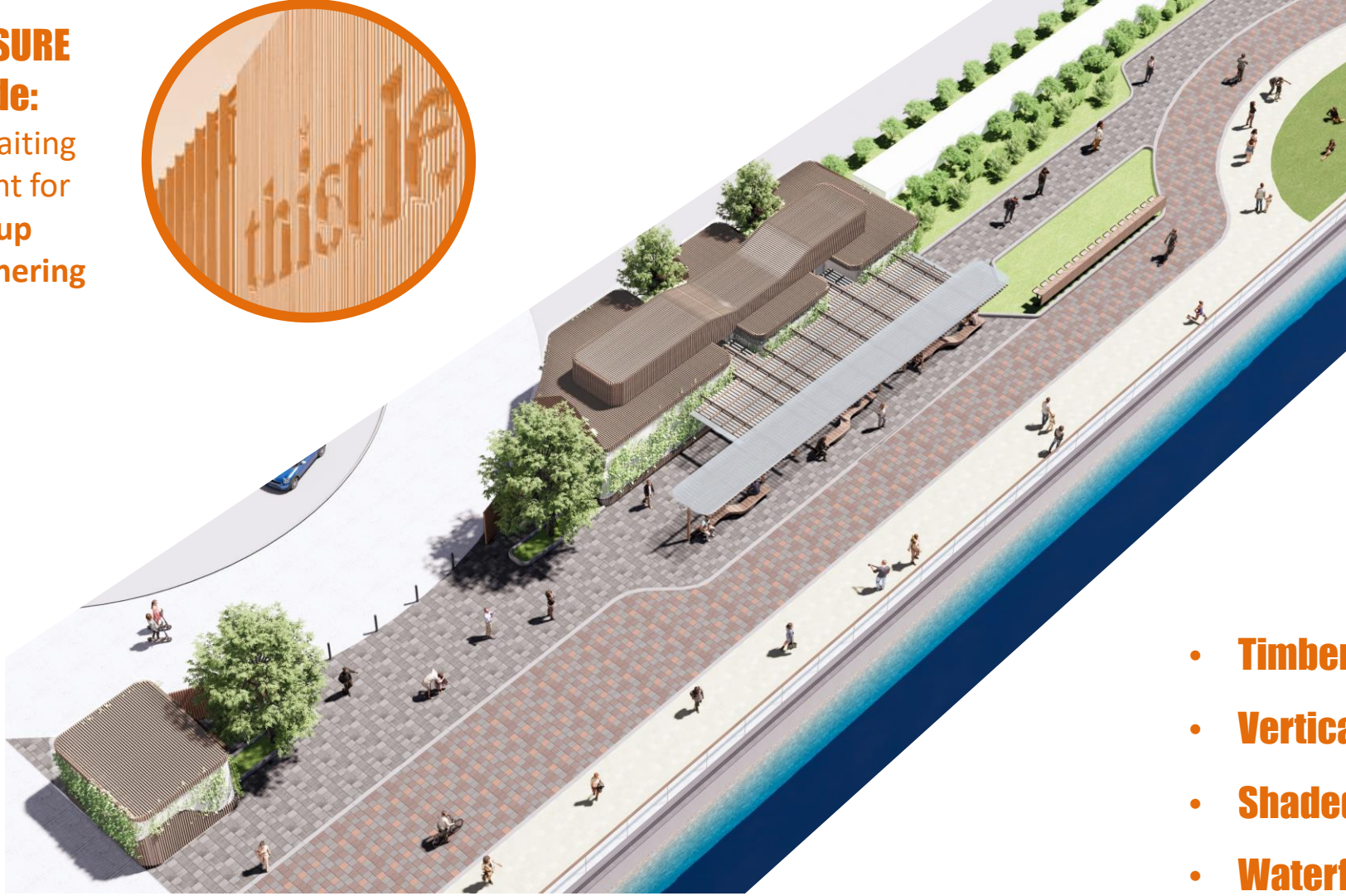
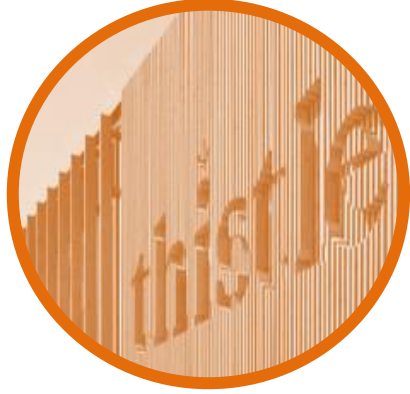


ENERGY Node:
an family place for revitalization



Promenade – Leisure Node

LEISURE Node:
a waiting point for group gathering



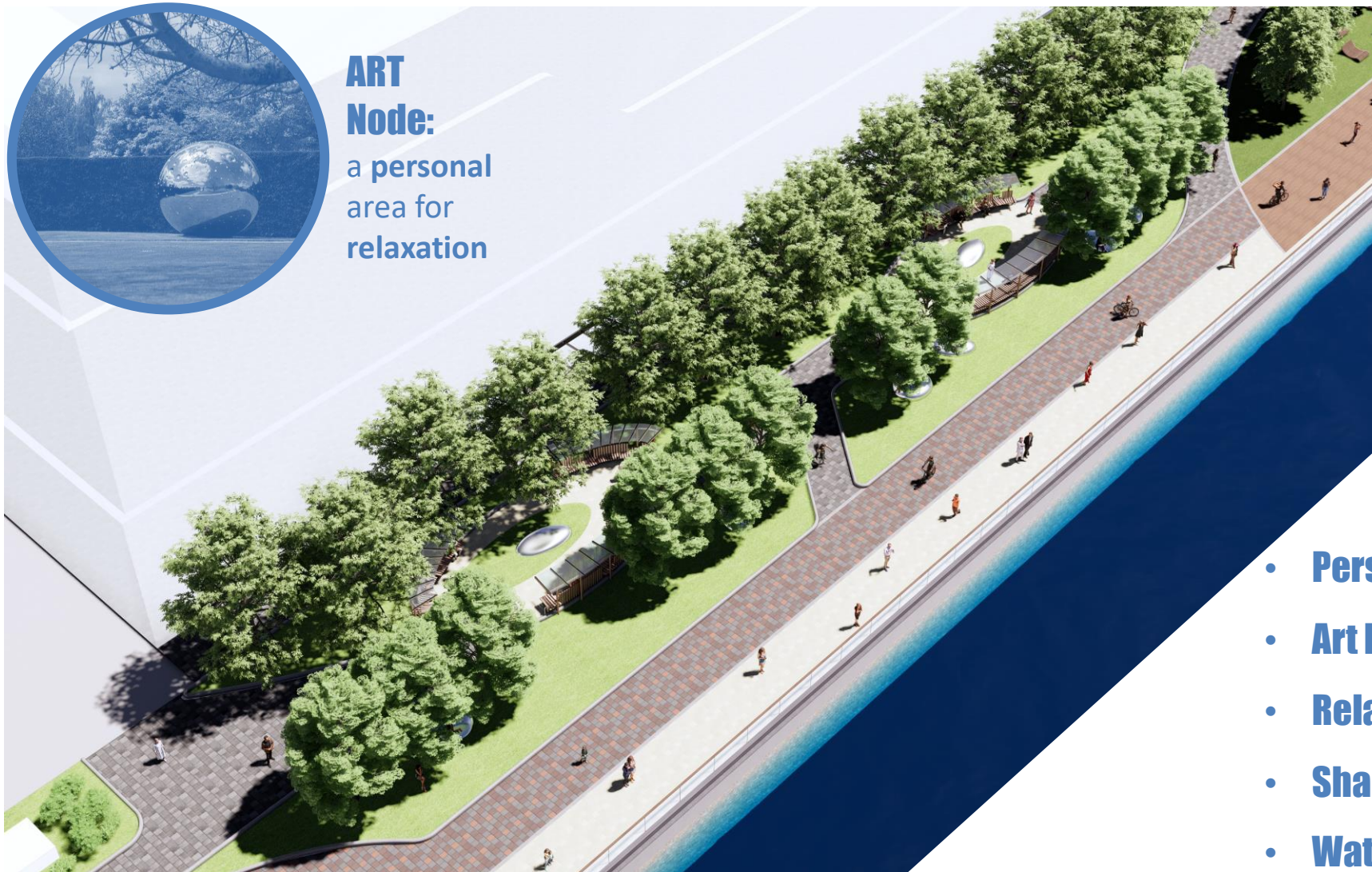
- **Timber-look Finishes**
- **Vertical Greening**
- **Shaded Seating**
- **Waterfront View**



Promenade – Art Node



ART Node:
a personal area for relaxation



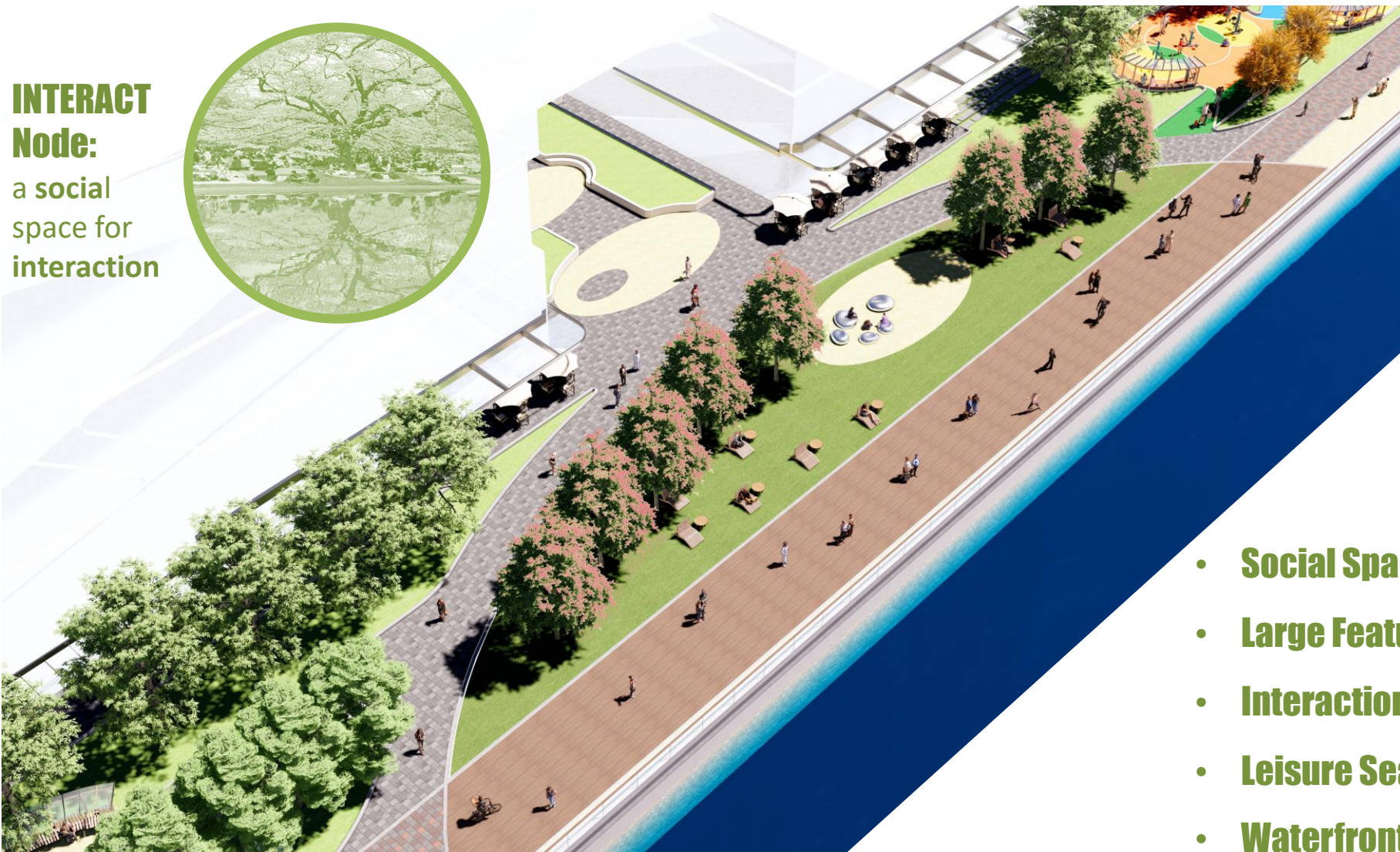
- **Personal Area**
- **Art Inspiration**
- **Relaxation**
- **Shaded Seating**
- **Waterfront View**



Disclaimer: All images and digitally generated content contained herein are artistic impressions only.

Promenade – Interact Node

INTERACT Node:
a social space for interaction



- **Social Space**
- **Large Feature Tree**
- **Interaction**
- **Leisure Seating**
- **Waterfront View**

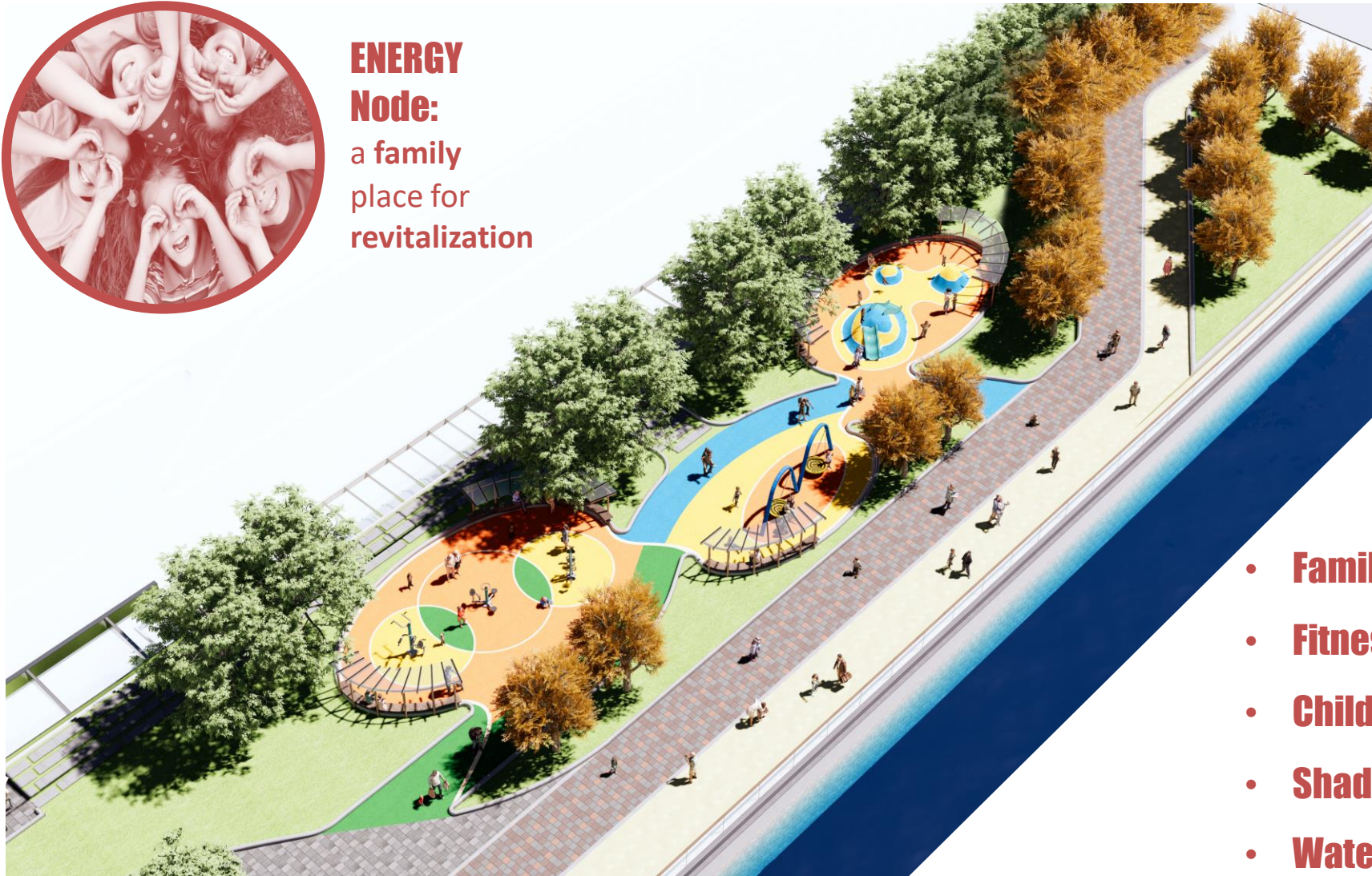


Disclaimer: All images and digitally generated content contained herein are artistic impressions only.

Promenade – Energy Node



ENERGY Node:
a family place for revitalization

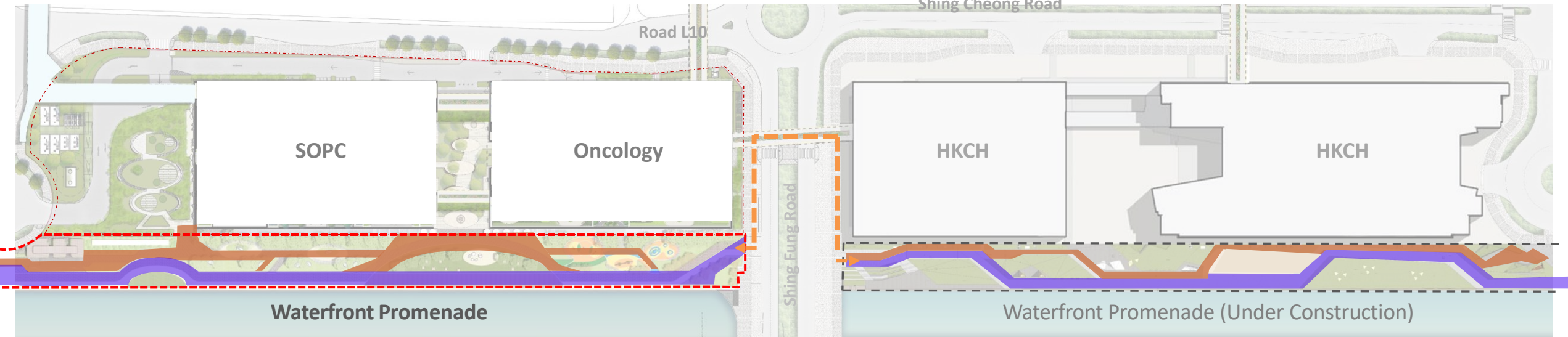
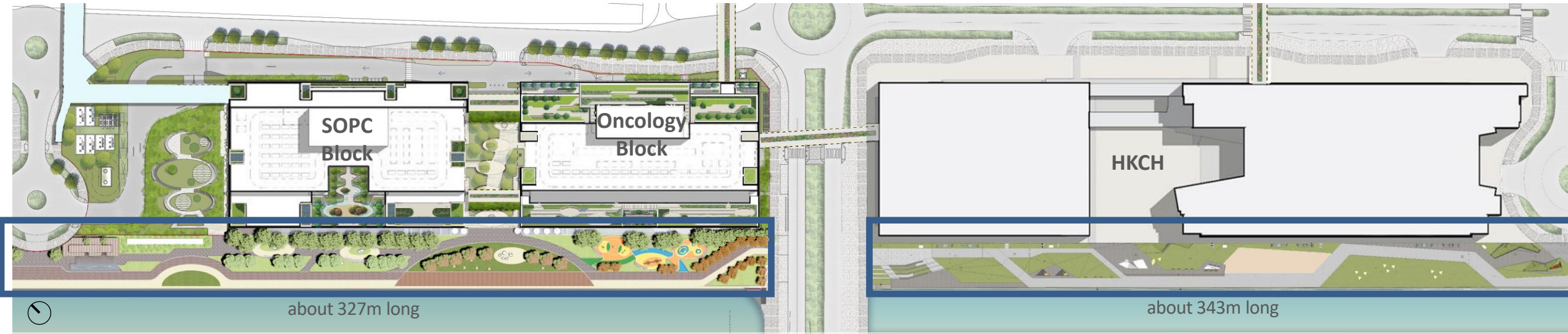


- **Family Place**
- **Fitness Area**
- **Children Play Area**
- **Shaded Seating**
- **Waterfront View**



Disclaimer: All images and digitally generated content contained herein are artistic impressions only.

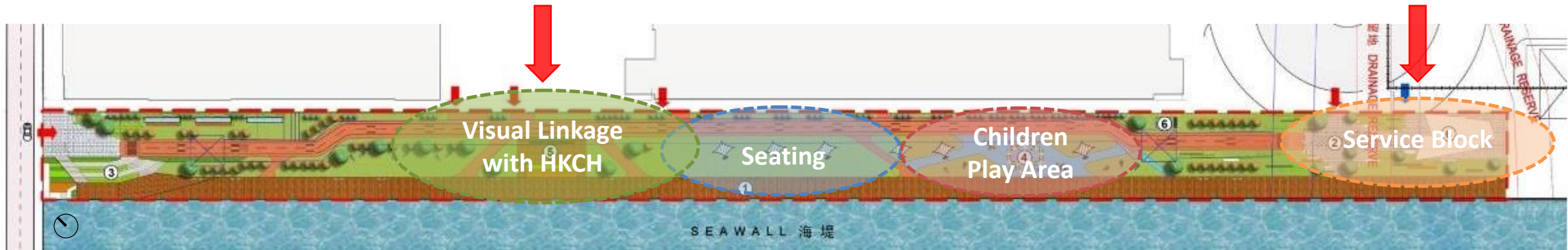
1. Coherent Design with HKCH Promenade - Connectivity



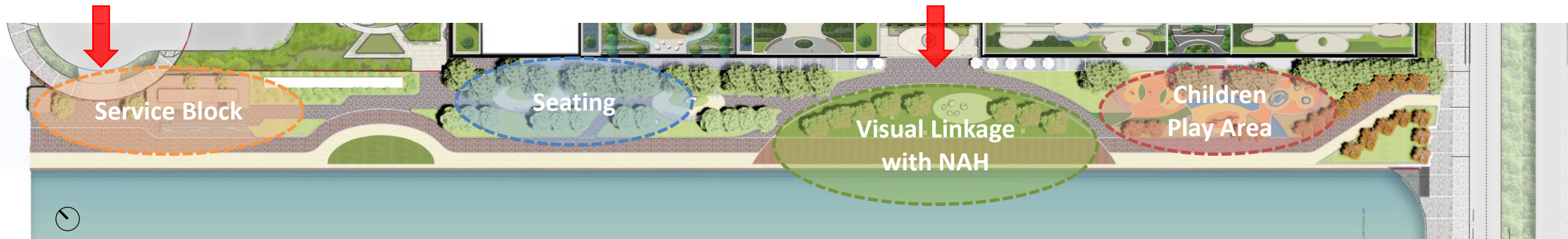
LEGEND Pedestrian Walkway for Elderly & Wheelchair Users

Promenade Greenway (6-10m)

1. Coherent Design with HKCH Promenade – Spatial Arrangement



Promenade adjacent to HKCH



Promenade adjacent to NAH

1. Coherent Design with HKCH Promenade – Material and Fixtures



HKCH Promenade



NAH Promenade

1. Material

NAH promenade shares the same material palette with HKCH promenade, such as paving color and timber look structure

2. Light Fixtures

The light fixtures of the NAH promenade would adopt similar model with HKCH

3. Furniture

Timber look furniture are used in both HKCH and NAH promenade

4. Plant selections

The plant selection of NAH promenade would be complementary with the HKCH promenade to create a harmonious yet diverse environment for the visitors

2. Interfacing Treatment – Oncology Ground Functions

E&M Service

SOPC

Onco

Promenade



2. Interfacing Treatment – SOPC Ground Functions

E&M Service

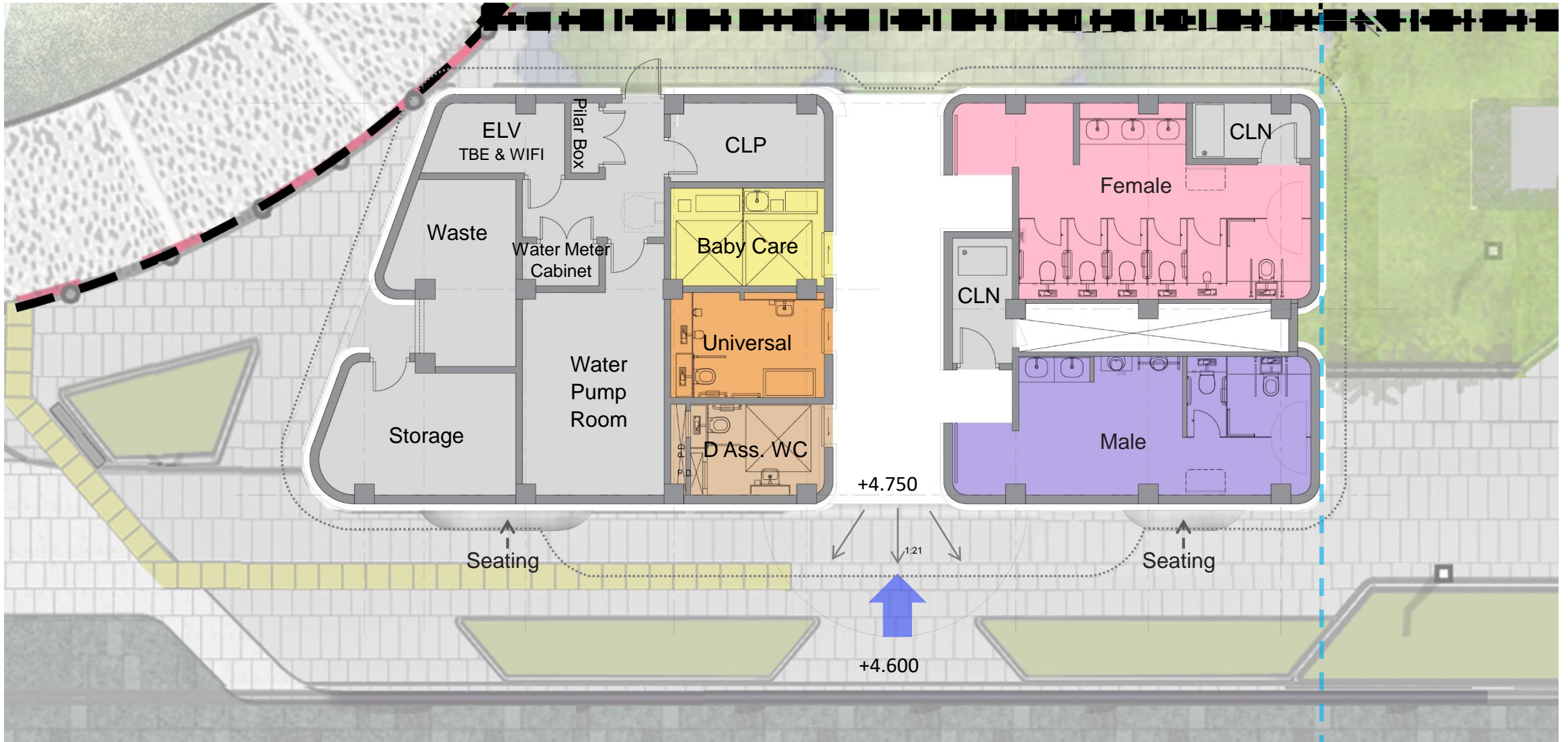
SOPC

Onco

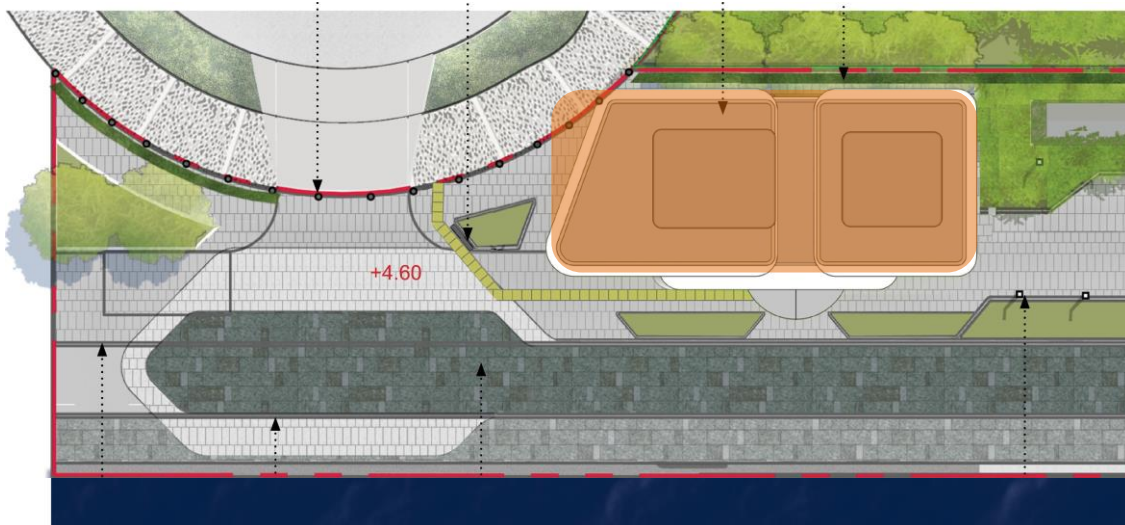
Promenade



3. Service Block – Previous Design



3. Service Block – Promenade Signature Node



Previous Design



Revised Design

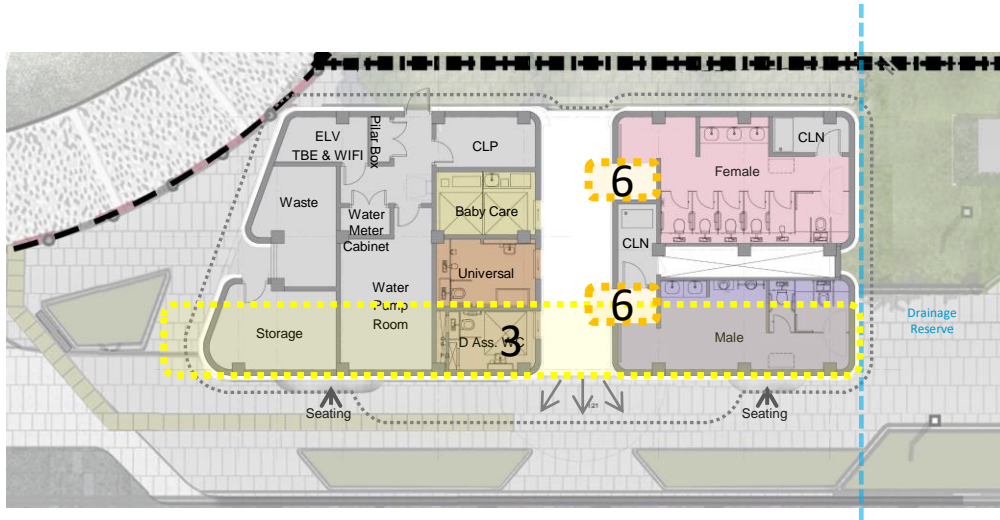
1. Reduced Massing

By shifting the storage and waste room to the West, the toilet block is reduced by over 50 sqm

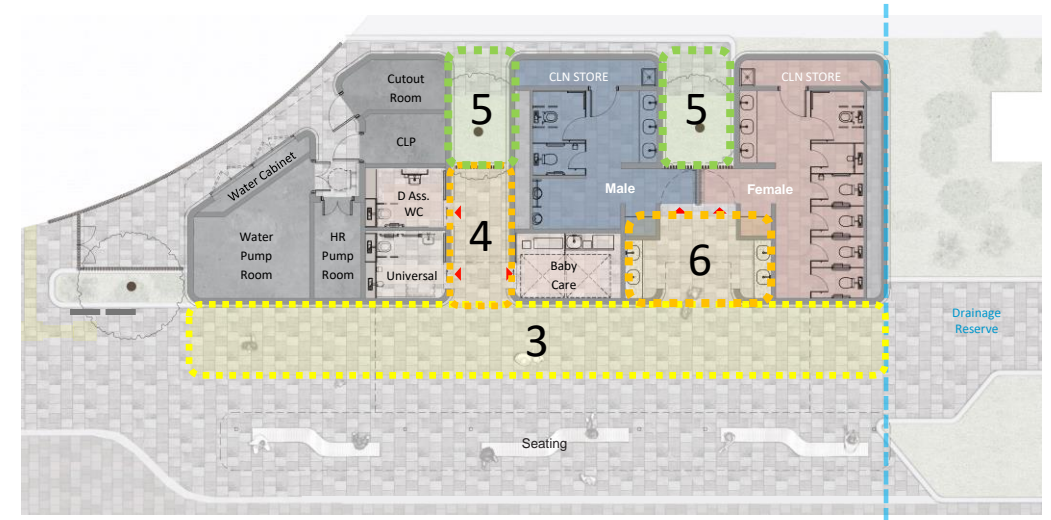
2. Break down Massing

The service block is broken down into 4 smaller blocks instead of 1 big structure to reduce the overall massing

3. Service Block – Design Comparison



Previous Design



Revised Design

3. Entrance Widen

The public entrance edge is widened by 2m with the service block reduced over 50sqm

4. Break down frontage

The entrance face is further broken down into 3 sections to lighten up the massing

5. Increase open greenery

2 viewing greenery areas are introduced to further reduce the massing and promote cross-ventilation

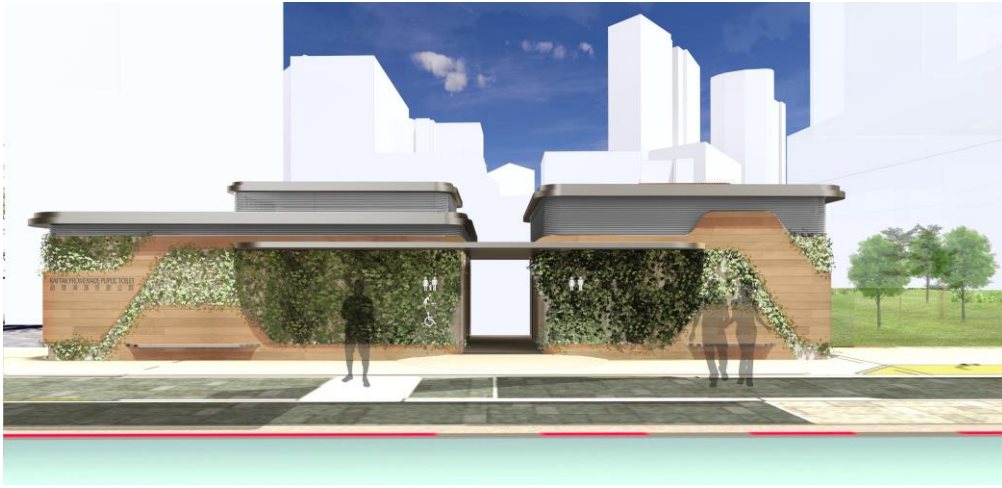
6. Welcoming Entrance

The revised layout of the toilet opened up the entrance for a more welcoming experience for the visitors

Promenade – Service Block



C) Service Block – Design Comparison



Previous Design



Revised Design

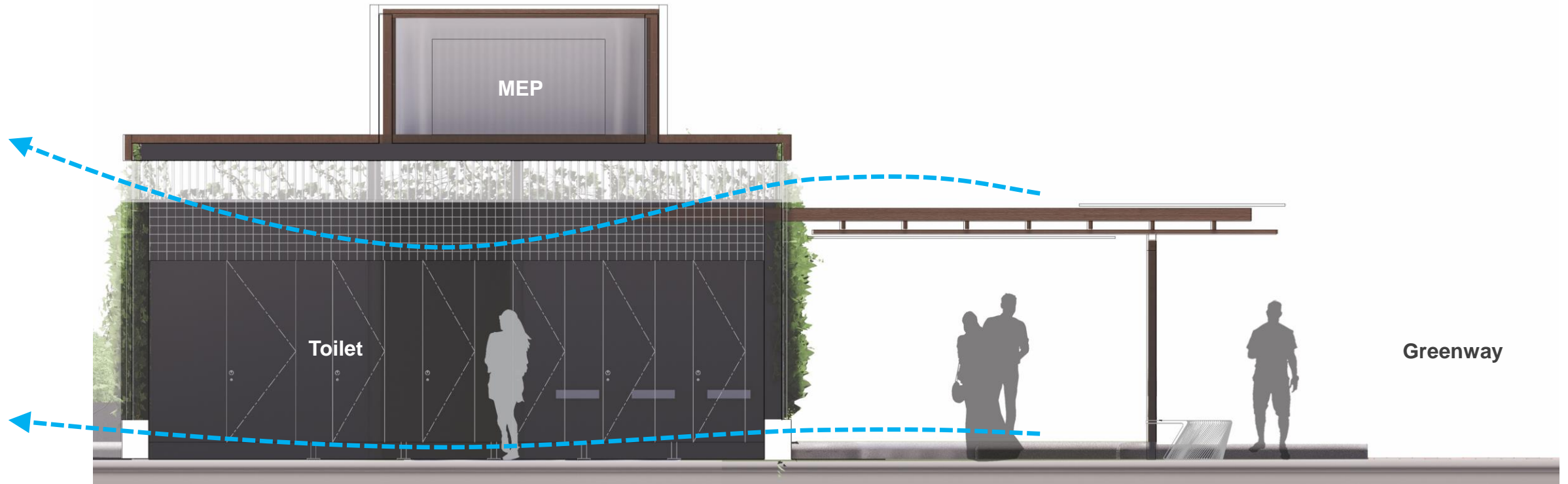
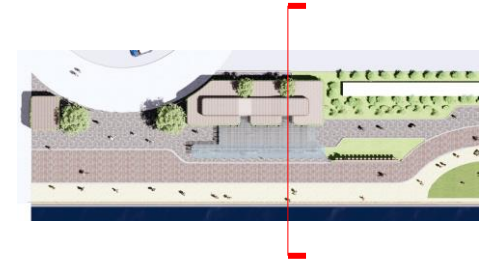
7. Sheltered Seating Added

Additional sheltered seating were added to enhance the design of the service block

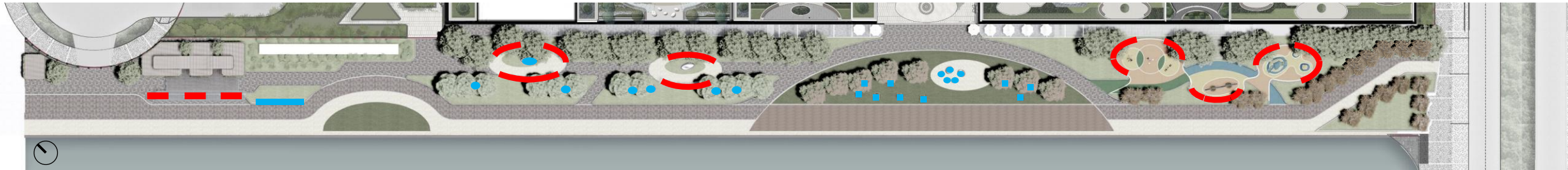
8. Timber & Vertical Greenery

Timber and vertical greenery were further incorporated to lighten up the toilet block

Promenade – Service Block Ventilation Diagram

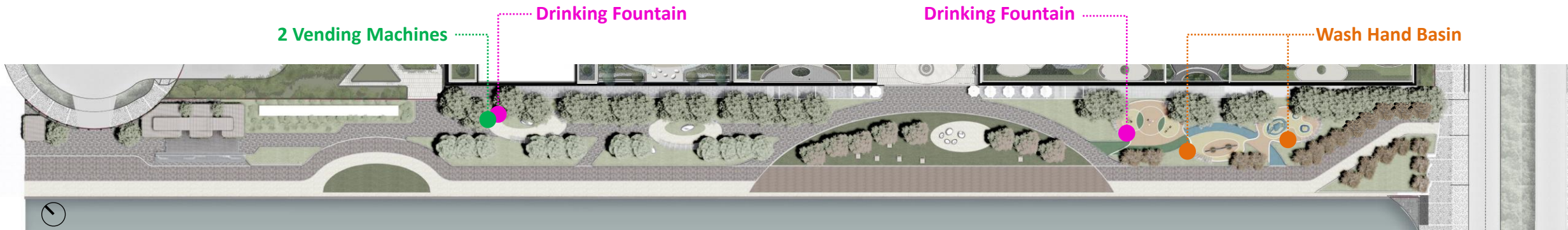


4. Promenade – Seating and Facilities



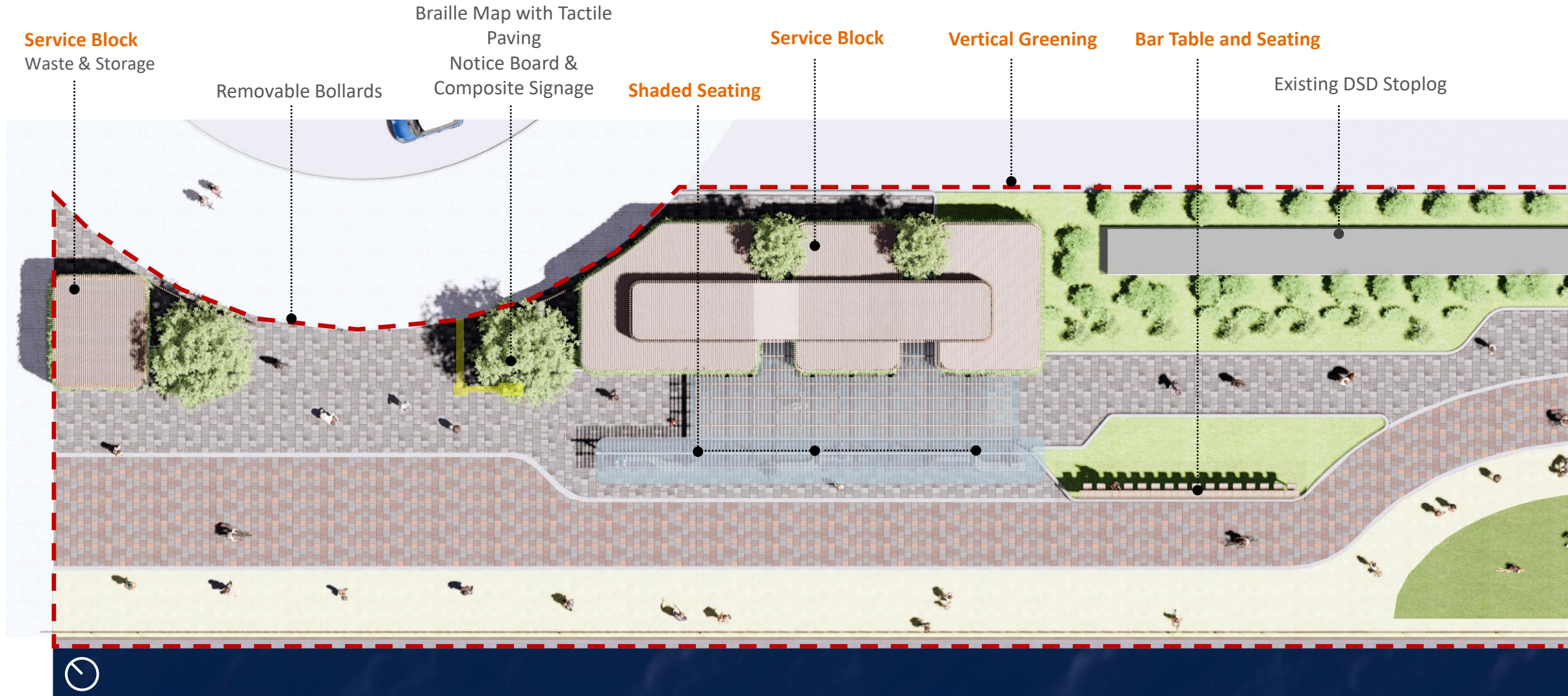
- 13 Rain Shelter with Seating
 Approx. 142 Seats
- 22 Feature Seating
 Approx. 38 Seats

Total Seating: approx. **180**

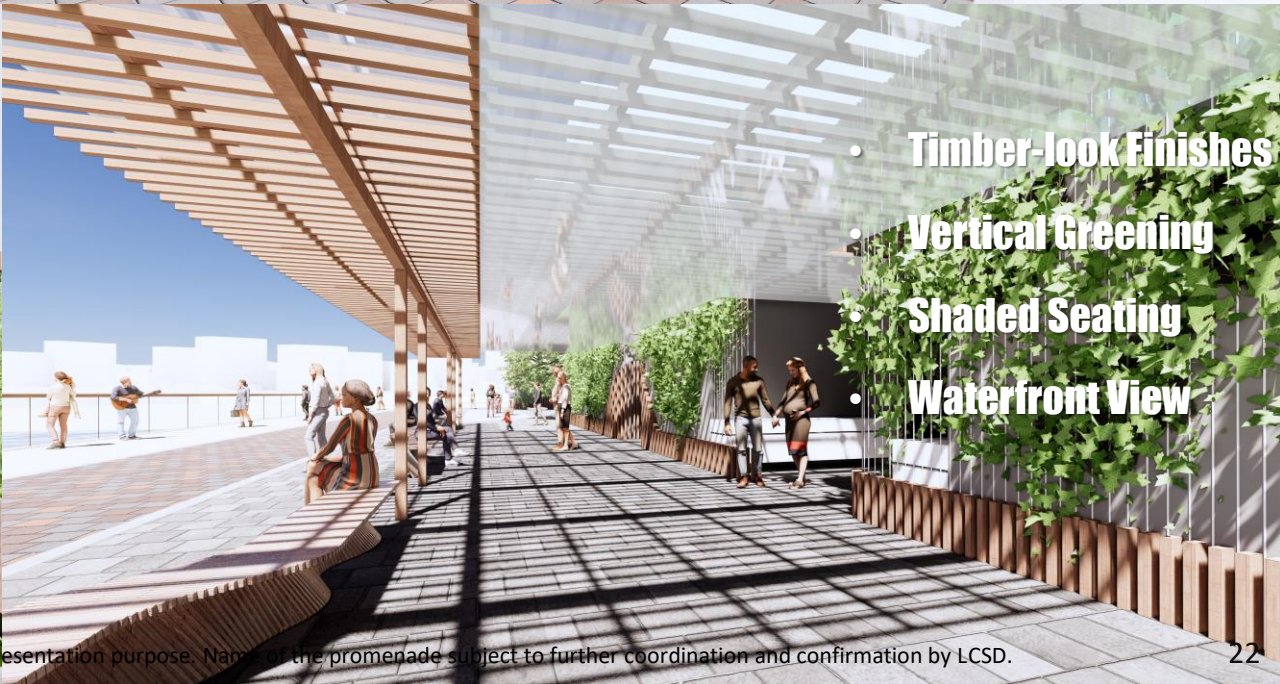


- 2 Vending Machines
- 2 sets of Drinking Fountain
- 2 nos. Wash Hand Basin

Promenade – Leisure Node

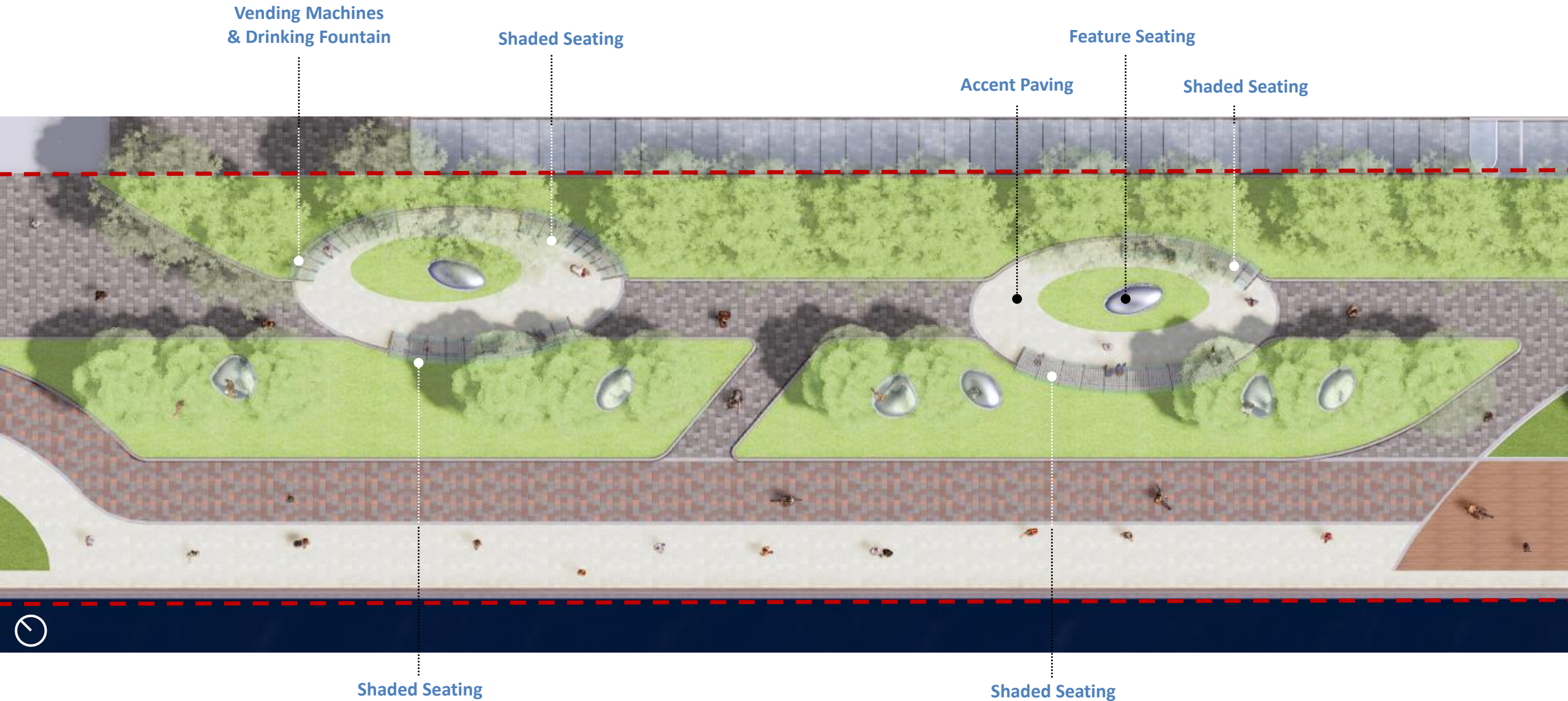


Promenade – Leisure Node



Disclaimer: All images and digitally generated content contained herein are artistic impressions only. Current signage is only for presentation purpose. Name of the promenade subject to further coordination and confirmation by LCSD.

Promenade – Art Node



Promenade – Art Node

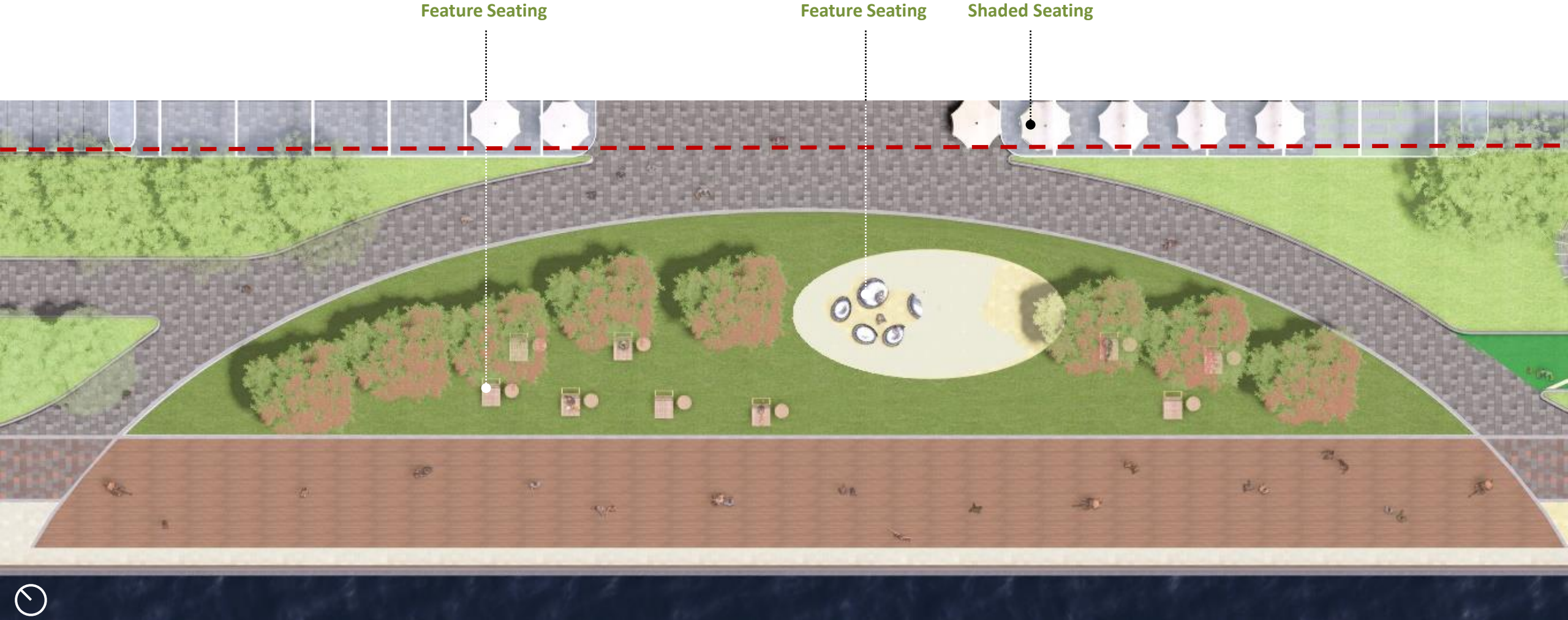


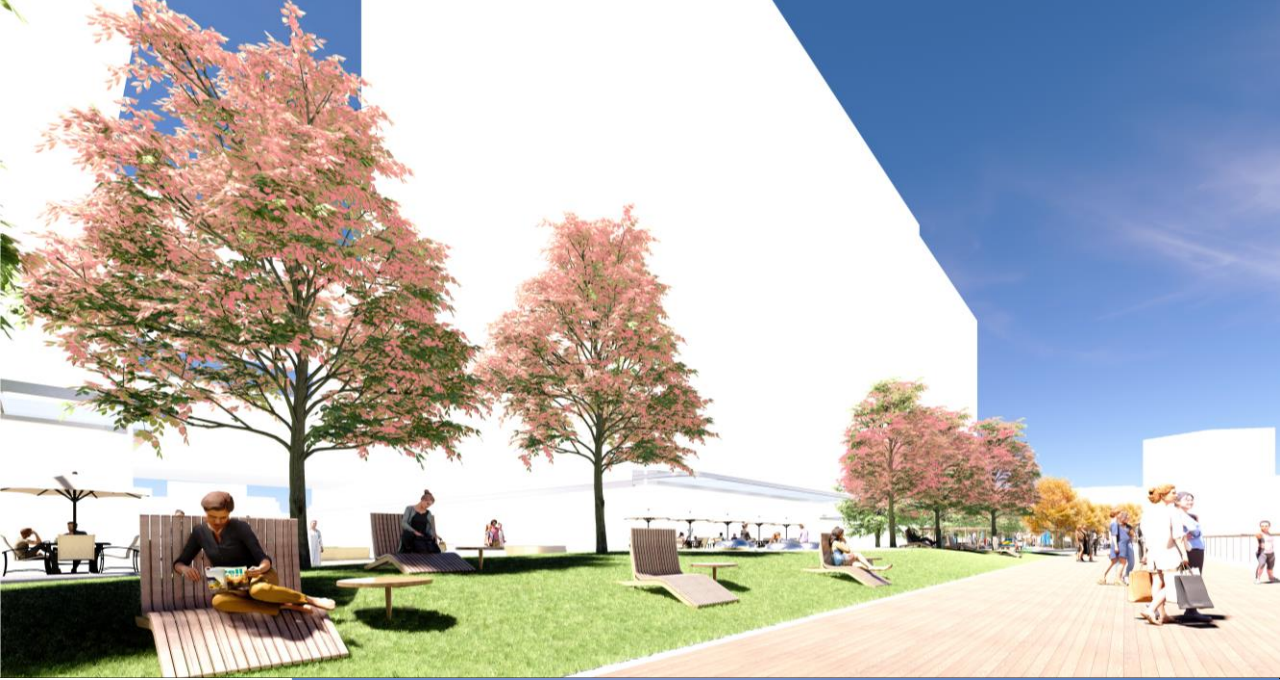
- Personal Area
- Art Inspiration
- Relaxation
- Shaded Seating
- Waterfront View

Disclaimer: All images and digitally generated content contained herein are artistic impressions only.



Promenade – Interact Node





- **Social Space**
- **Large Feature Tree**
- **Interaction**
- **Leisure Seating**
- **Waterfront View**

Disclaimer: All images and digitally generated content contained herein are artistic impressions only.

Promenade – Energy Node

Shaded Seating & Drinking Fountain

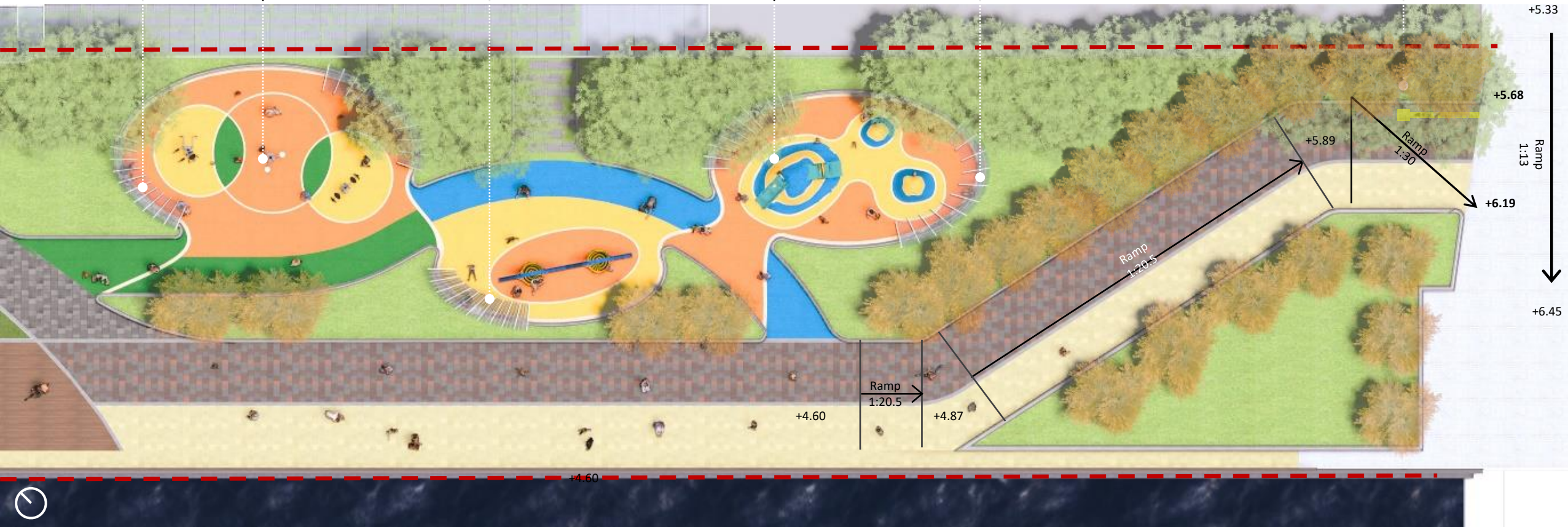
Fitness Area

Shaded Seating & Wash Hand Basin

Play Area

Shaded Seating & Wash Hand Basin

Braille Map with Tactile Paving
Notice Board & Composite Signage



Promenade – Energy Node



- Family Place
- Fitness Area
- Children Play Area
- Shaded Seating
- Waterfront View

Disclaimer: All images and digitally generated content contained herein are artistic impressions only.



New Acute Hospital at Kai Tak Development Area

ARUP



WONG TUNG & PARTNERS LIMITED
ARCHITECTS & PLANNERS



MEINHARDT

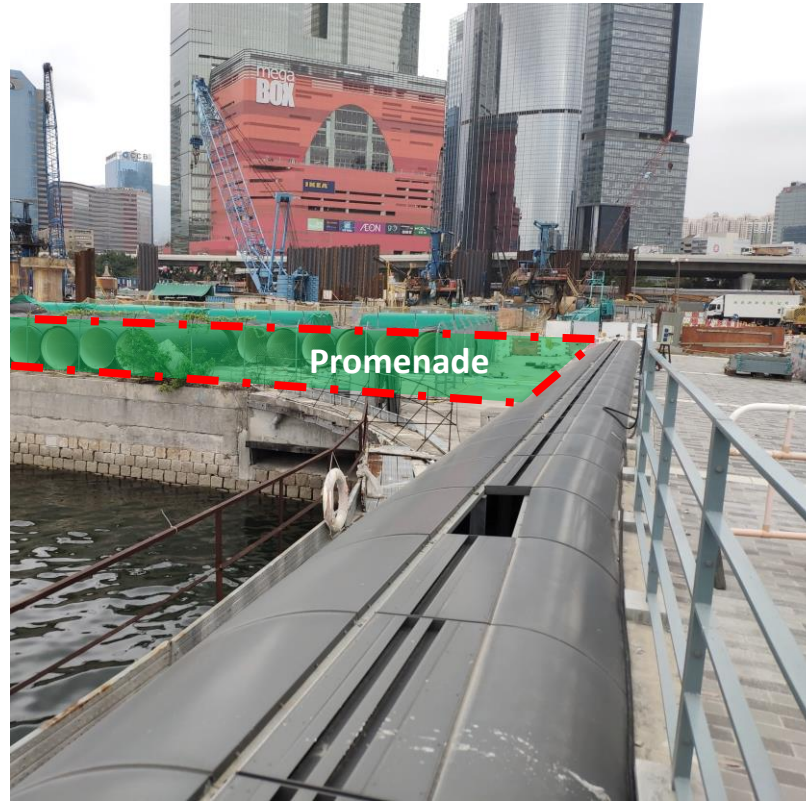


5. Promenade – D4 Road Crossing

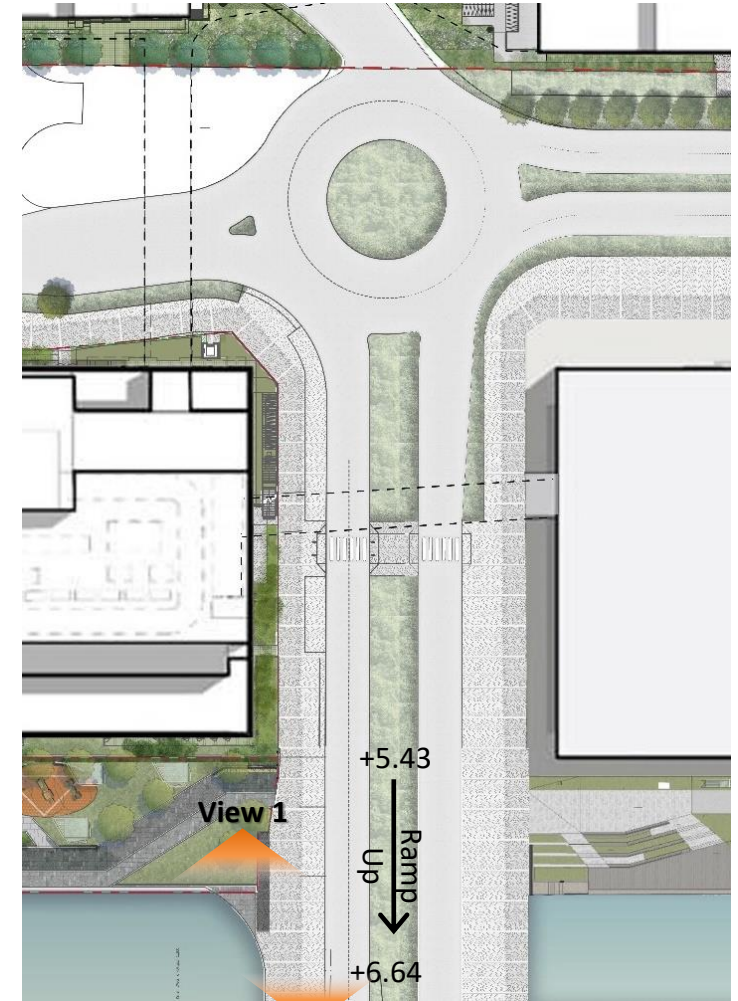
Kai Tak Bridge and Utility Trough blocked the possible connection between the Promenades



View 1

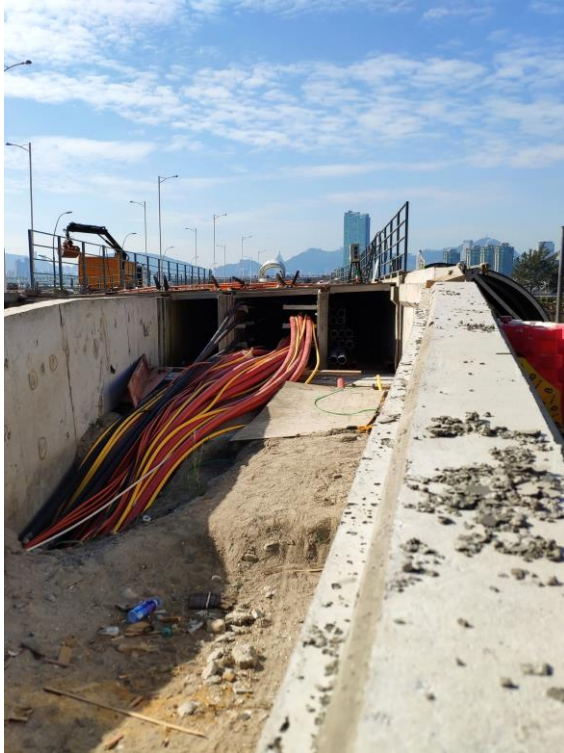


View 2



View 2

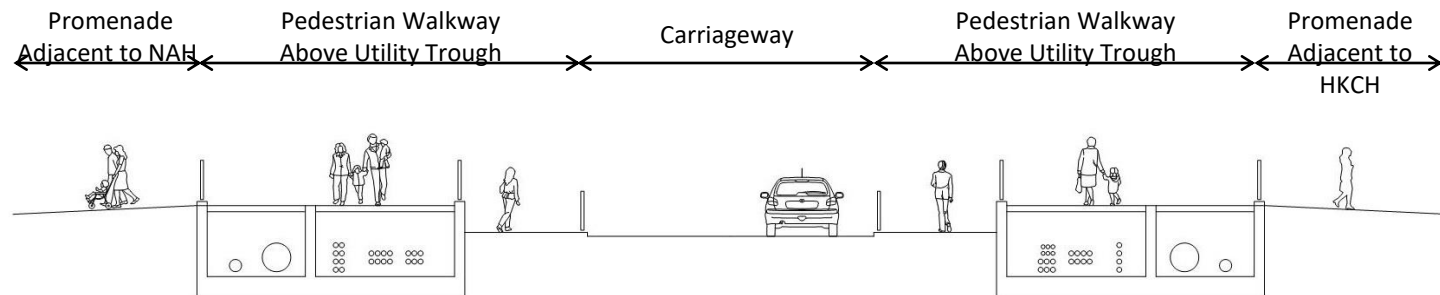
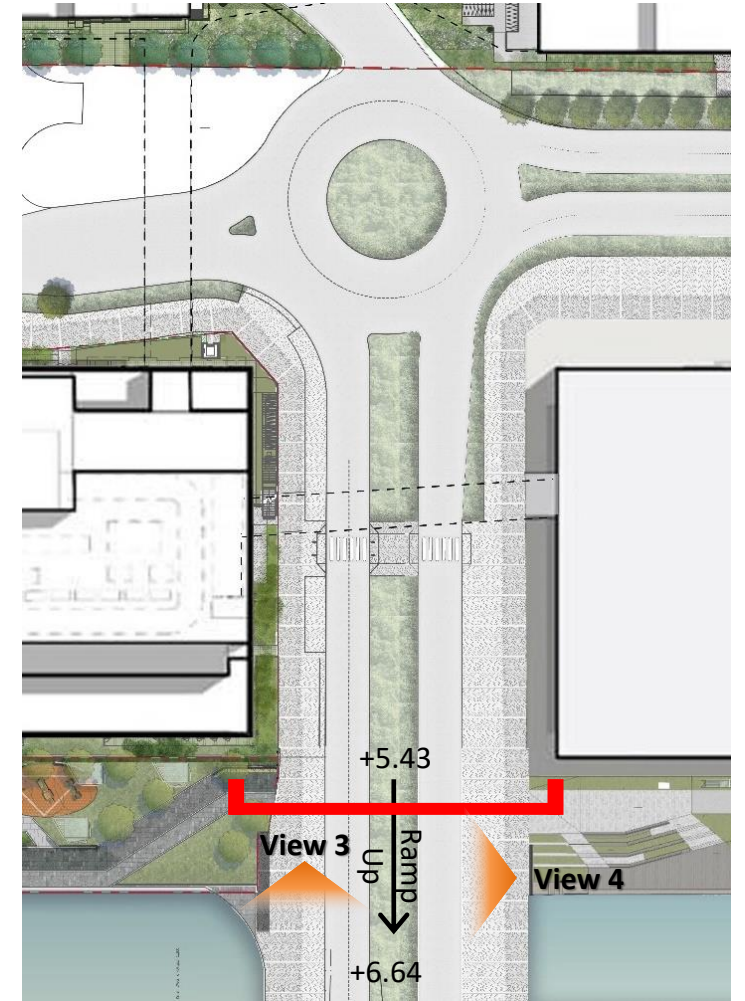
5. Promenade – D4 Road Crossing



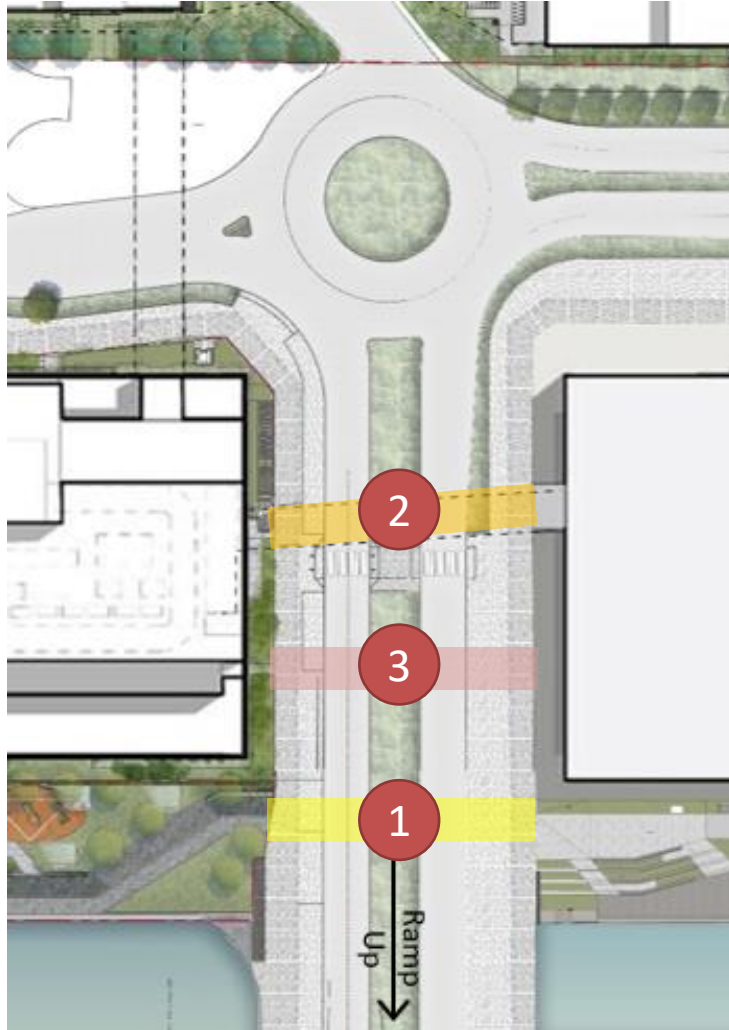
View 3



View 4



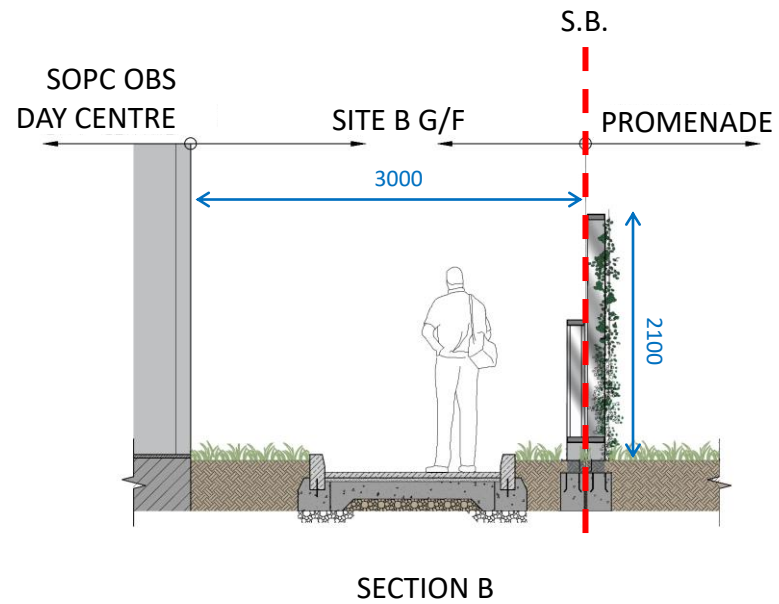
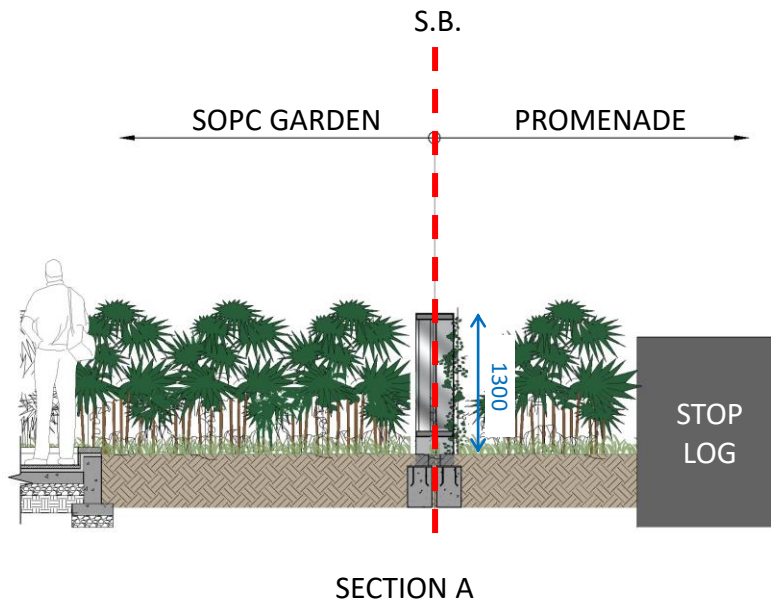
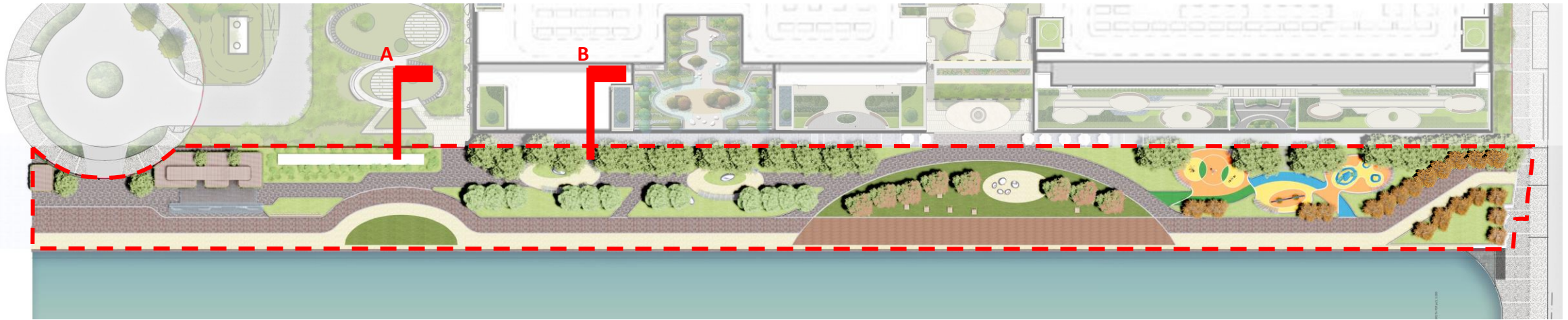
5. Promenade – D4 Road Crossing



CEDD and TD response to queries as below:

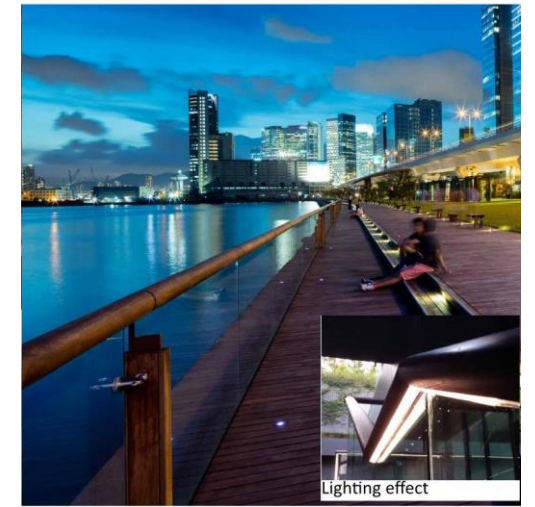
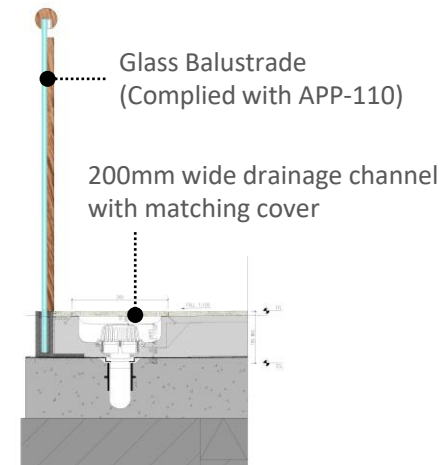
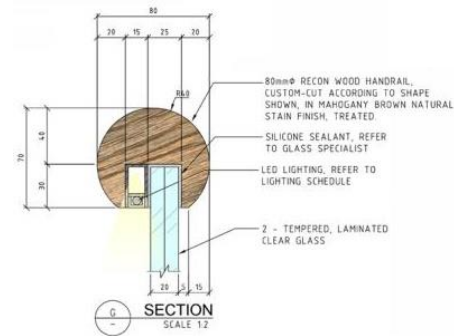
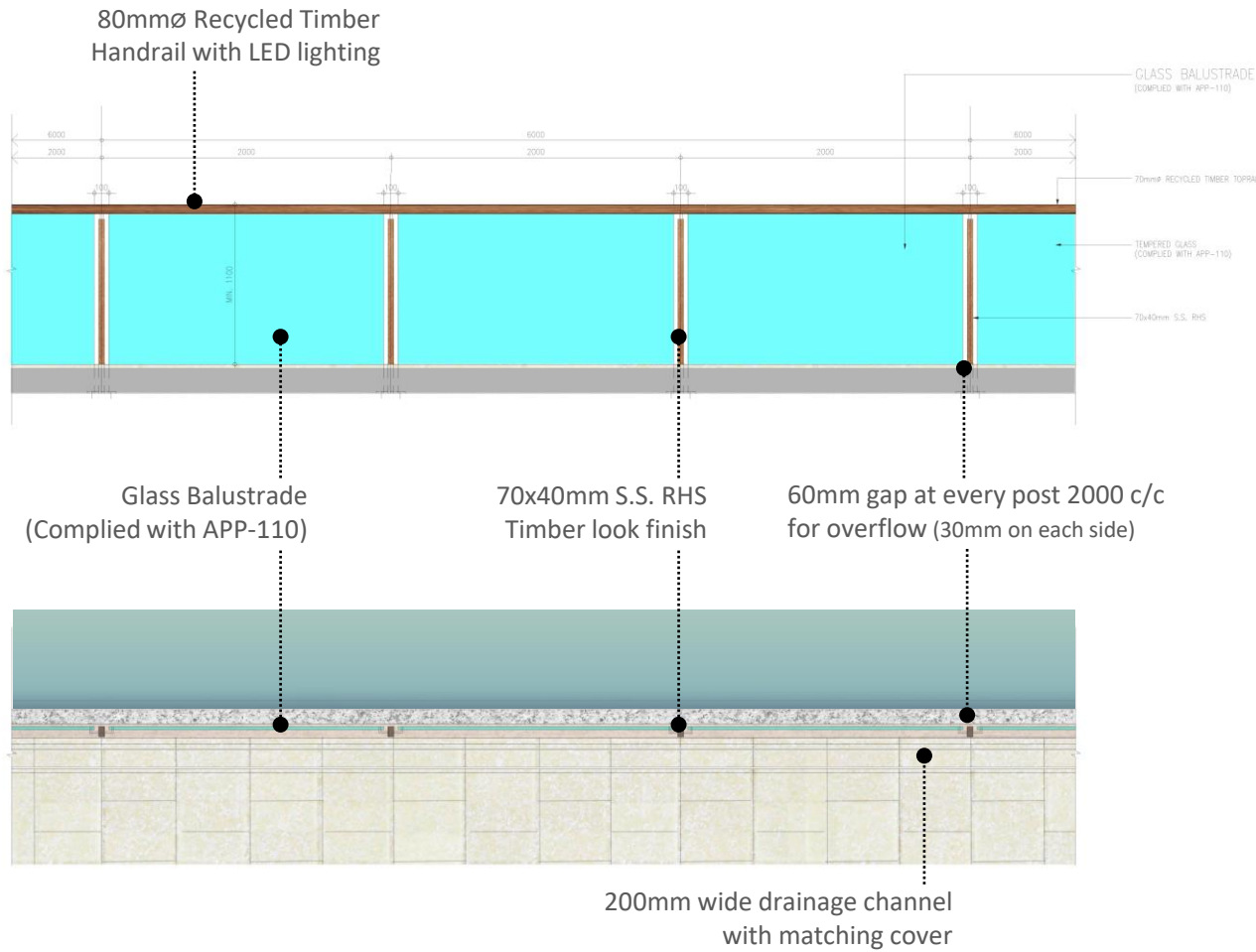
- 1) **Technical constraints of direct crossing due to level difference and difficulties in relocating the utilities**
- 2) **Relocation of crossing directly underneath the proposed linkbridge between HKCH and NAH for better protection could be considered**
- 3) **Southward shifting of the crossing is not desirable due to traffic safety concern**

Promenade – Vertical Greening Design Concept



Reference Image

Promenade – Railing Design



THANK YOU

