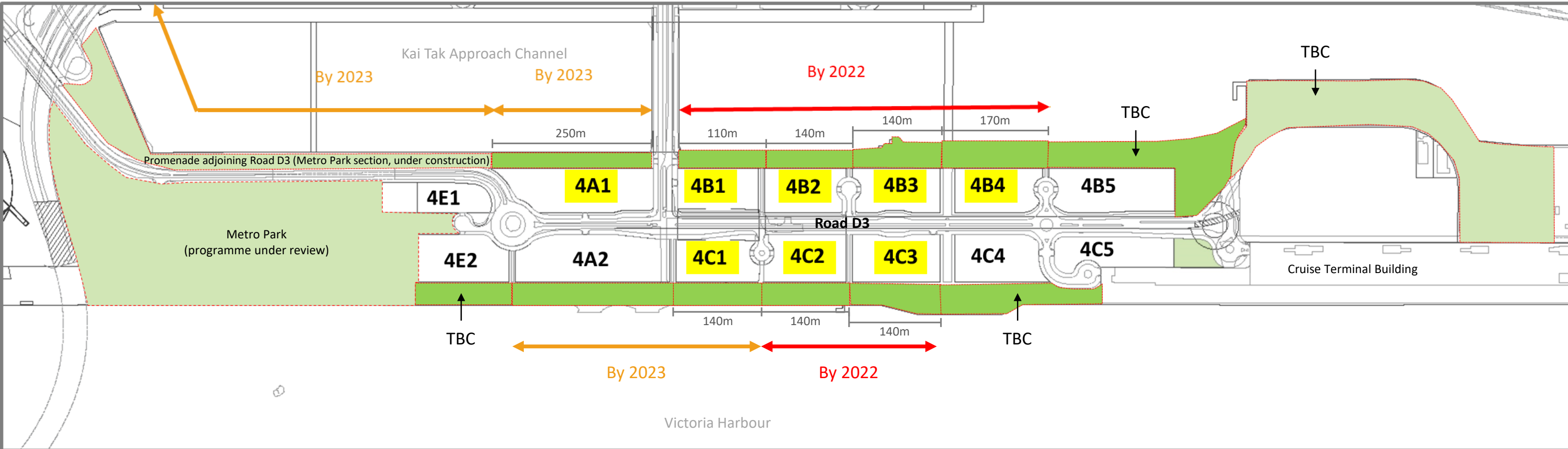


Implementation Programme for Open Space at Area 4 of Former Runway, KTD



Phase 1—By 2022 tentatively*
 Phase 2—By 2023/24 tentatively*

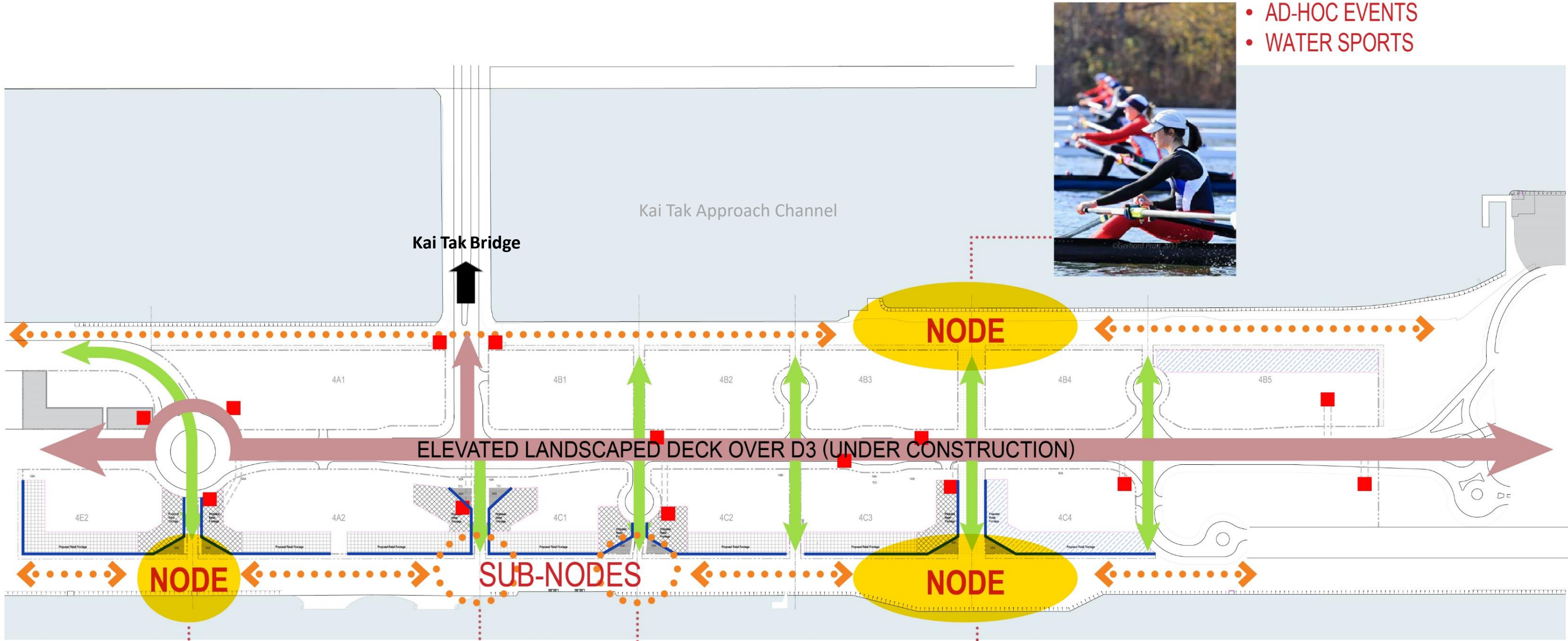
POSPD
 Other POS
 1st Batch of Design Submission for POSPD

*Remarks:

- Actual completion dates for POSPD of disposed sites (4A1, 4B1, 4B2, 4B3, 4B4, 4C1, 4C2, 4C3, 4A2) will be subject to individual site progress.
- Actual programme for POSPD of other sites (4B5, 4C4, 4E2) will be subject to the actual landsale programme.

Control Parameters for POSPD

Zoning framework and design theme



- AD-HOC EVENTS
- WATER SPORTS



• PLAYSCAPE



• CULTURAL



• RETREAT - CITY FOREST



• BLUE & GREEN

■ Proposed vertical transportation to elevated landscaped deck

↔ At grade pedestrian path

— Retail Frontage

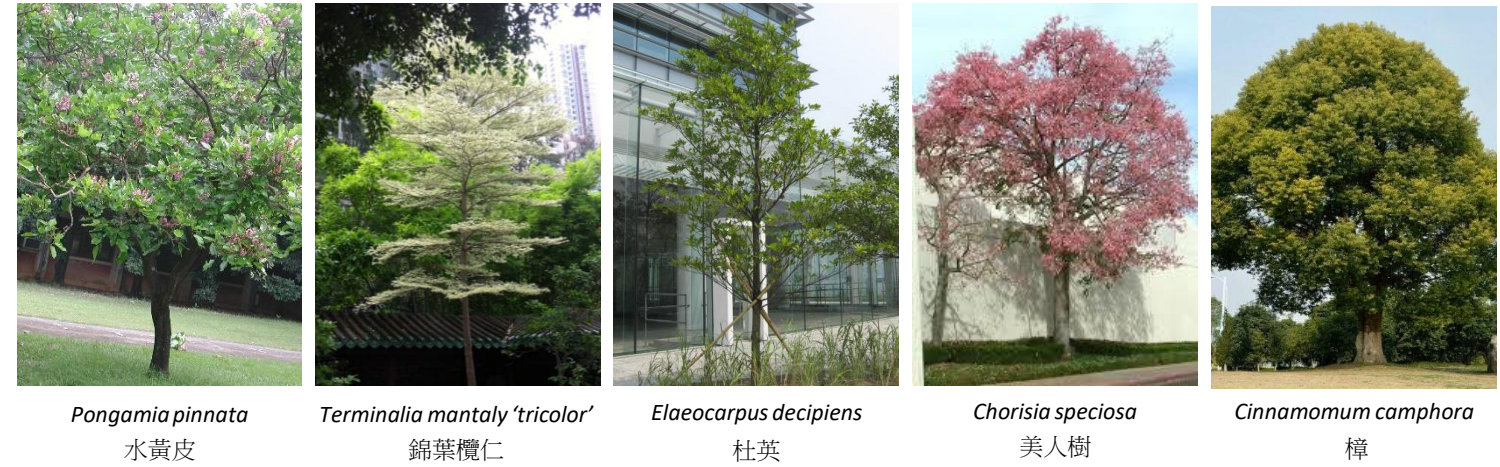
Control Parameters for POSPD

Coherent design features and branding

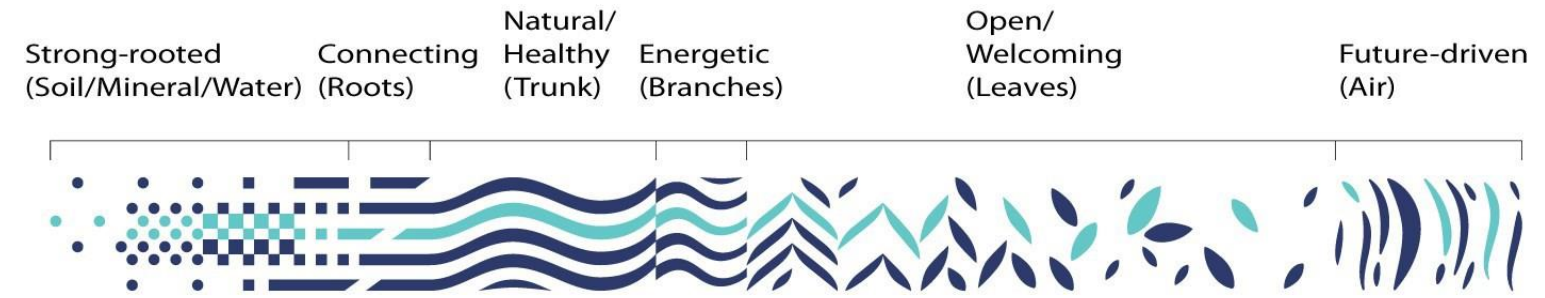
Lighting



Soft Landscape

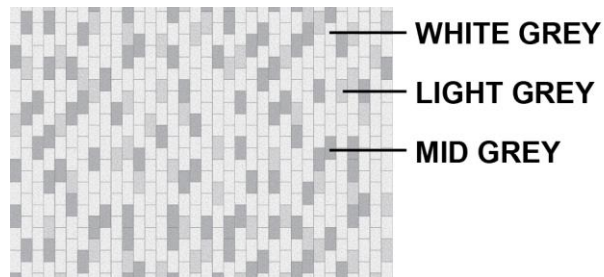


Public Creatives



Paving

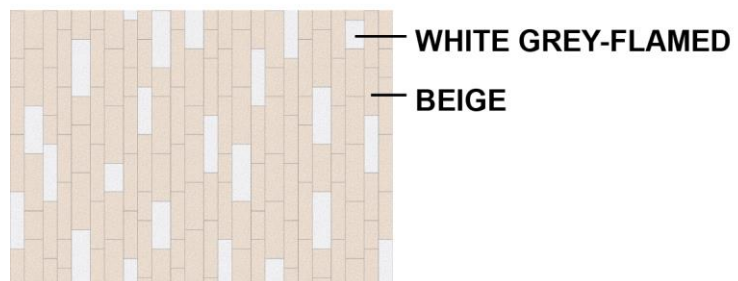
Dedicated Pedestrian Zone



Greenway

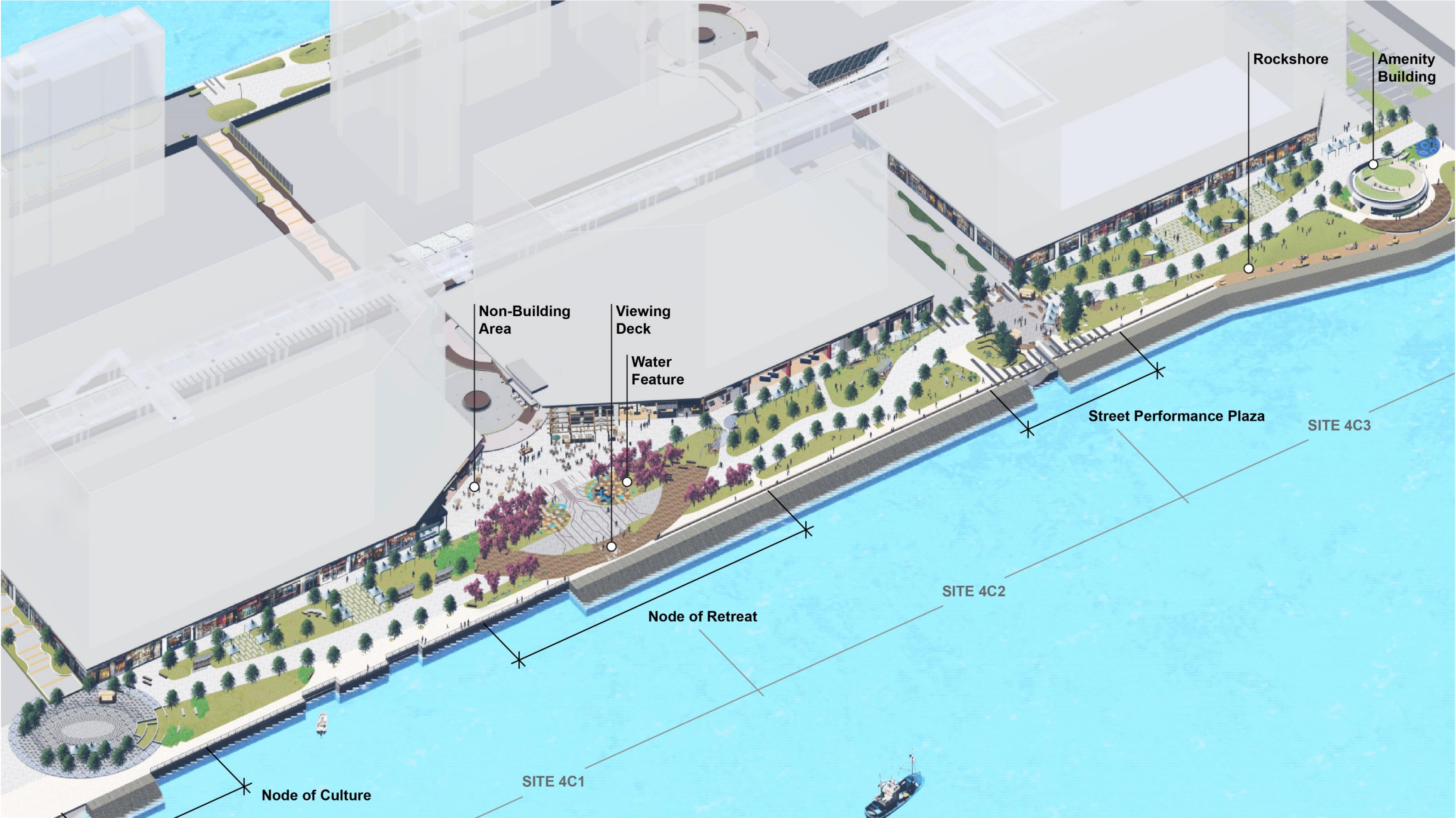


Waterfront Pathway



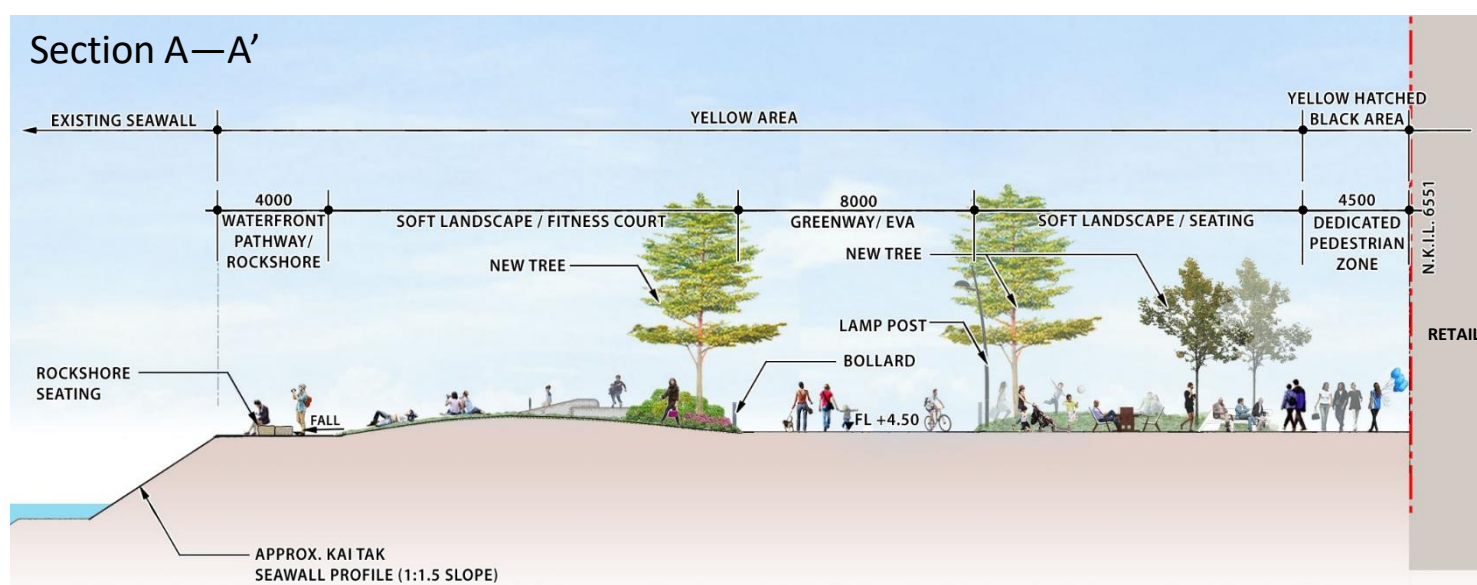
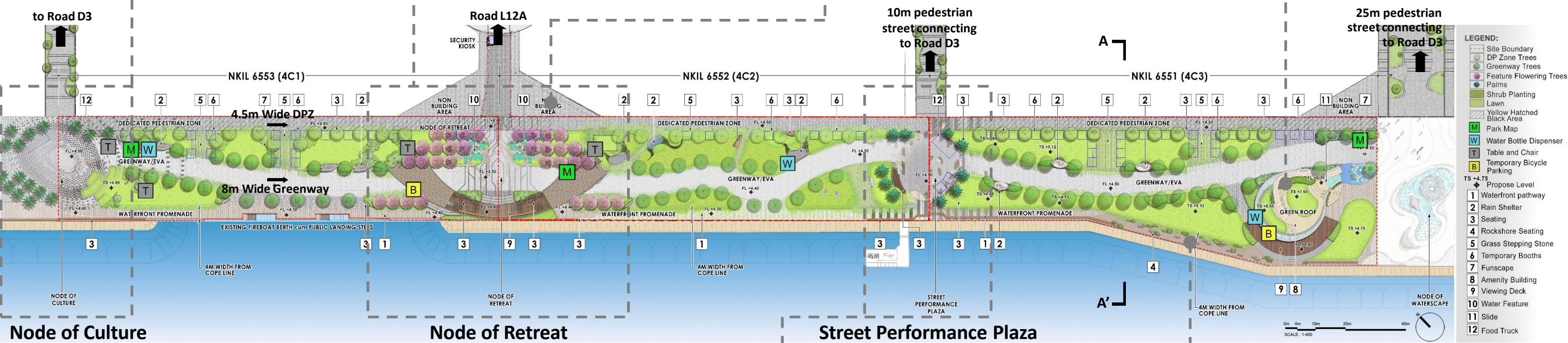
The "Aviation" Theme





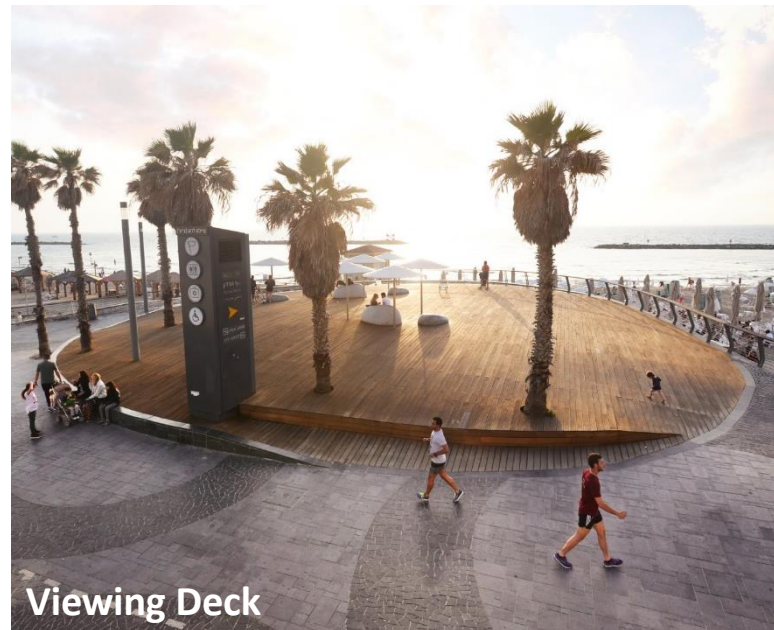
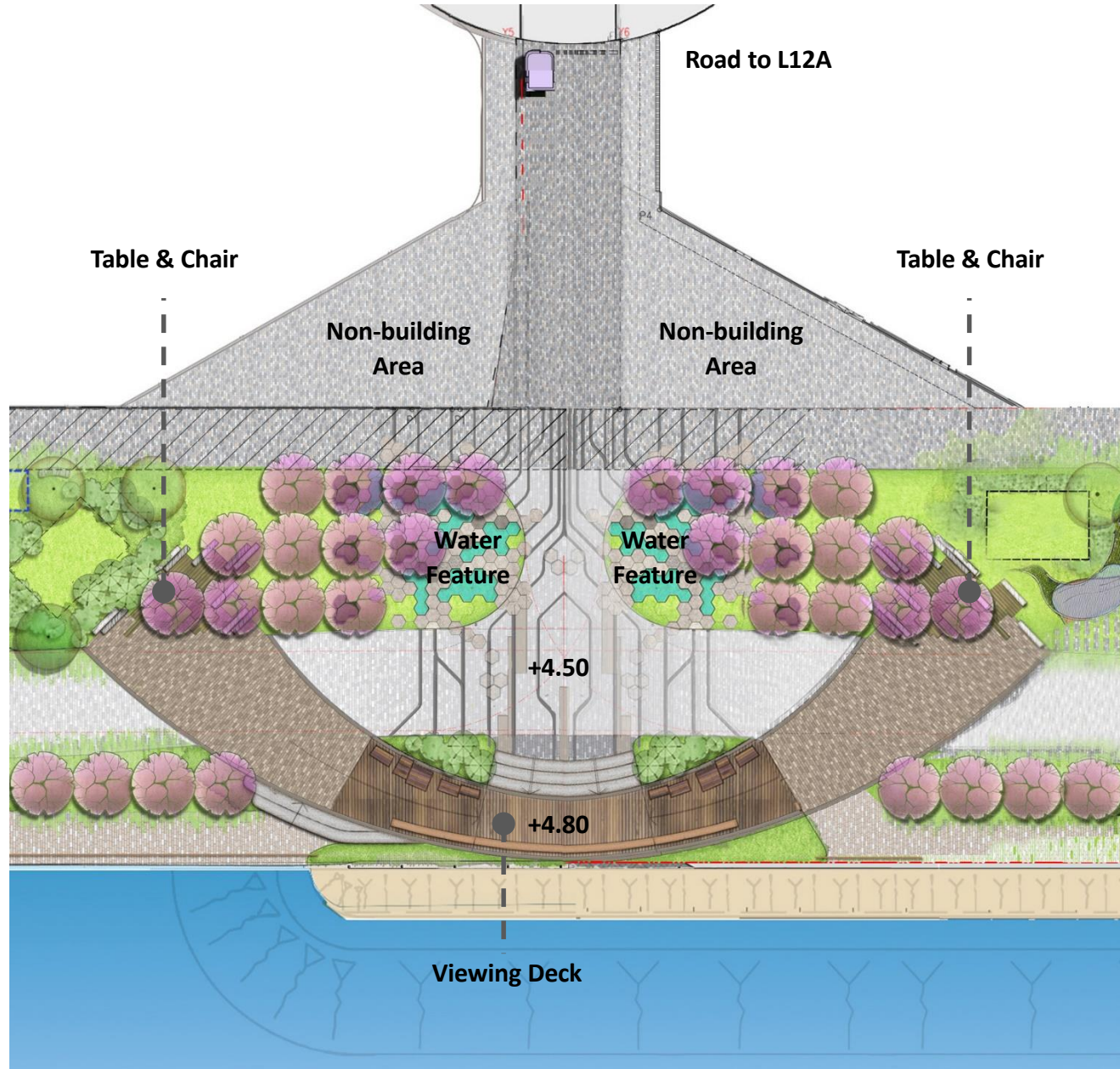
Proposals by Developers Combined Layout of 4C1, 4C2 and 4C3

Option 1 - Meandering GreenWay



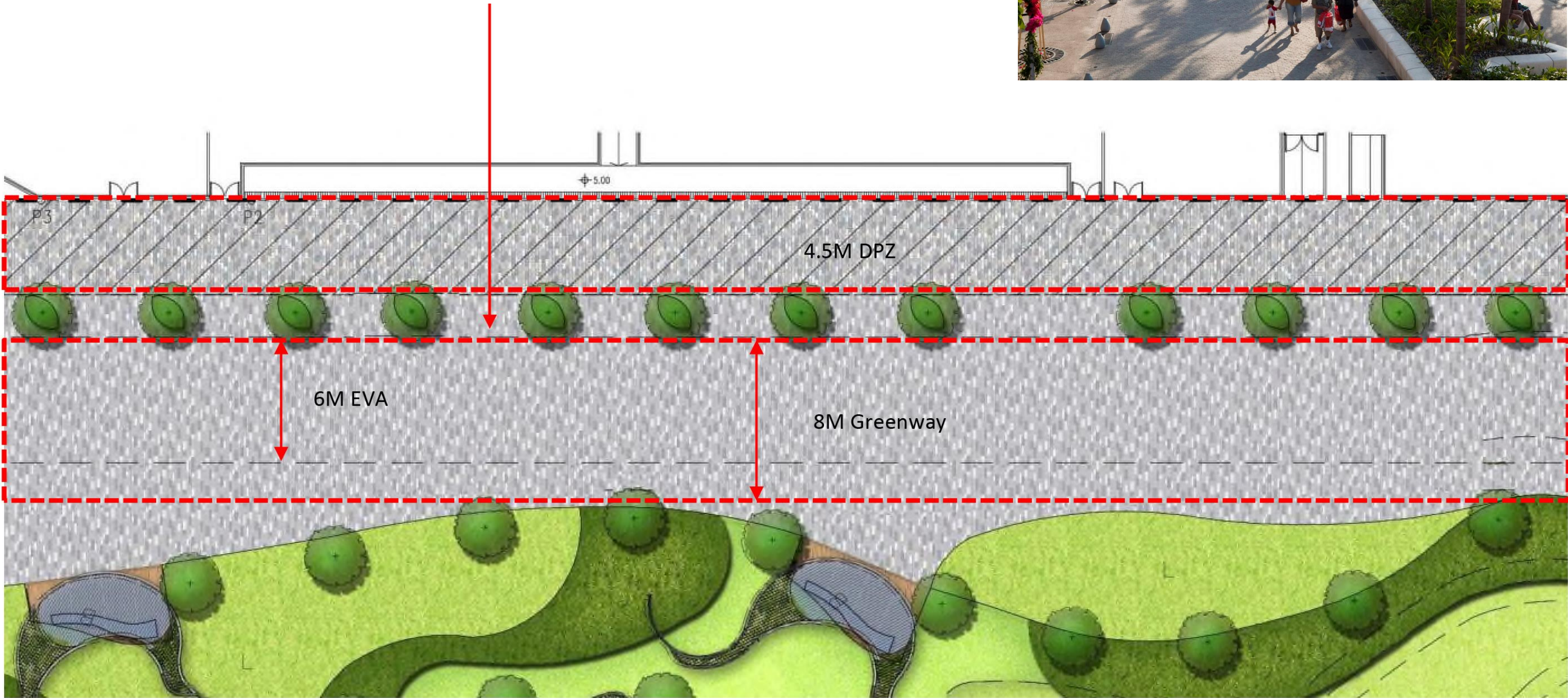
Proposals by Developers

Node of Retreat



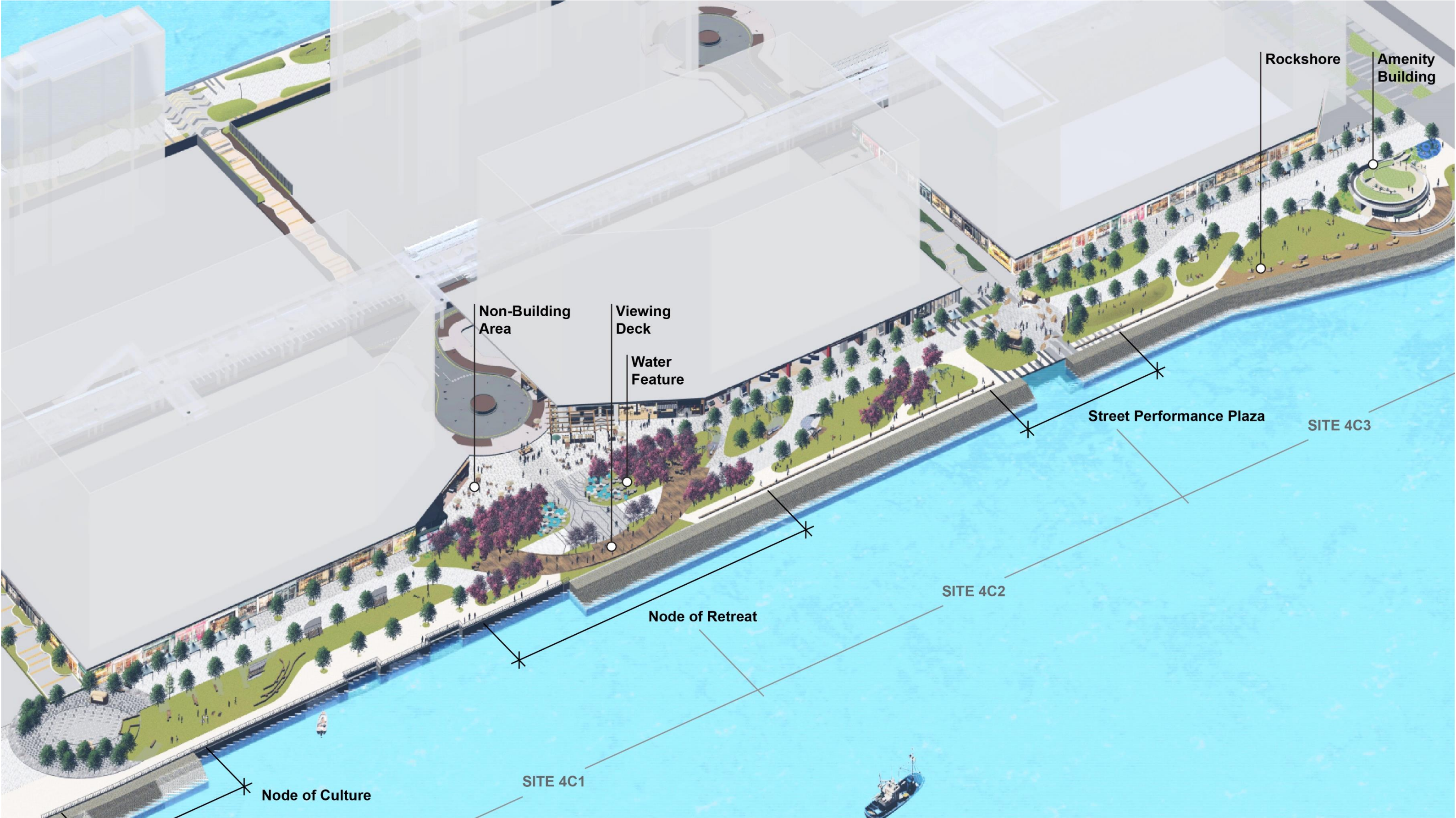
Optional Scheme to Combine DPZ and GreenWay

Dedicated pedestrian Zone (4.5M) combined with Greenway (8M) Structural trees required along DPZ to be placed between DPZ and Greenway also as demarcation



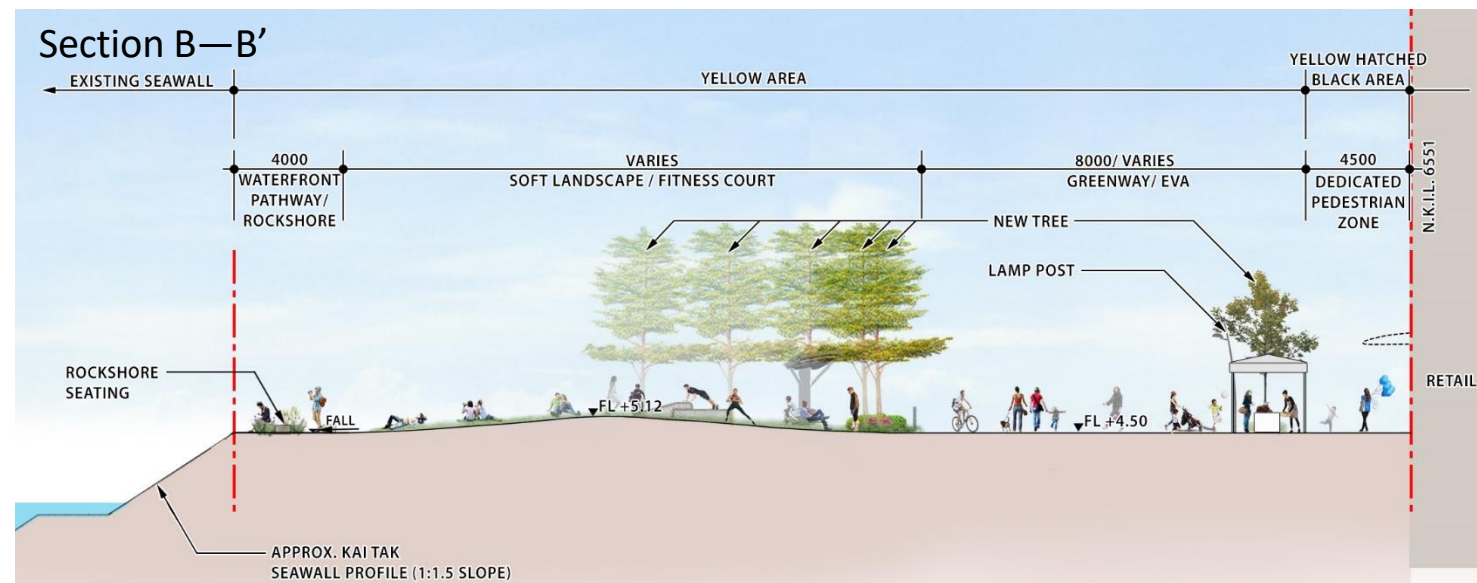
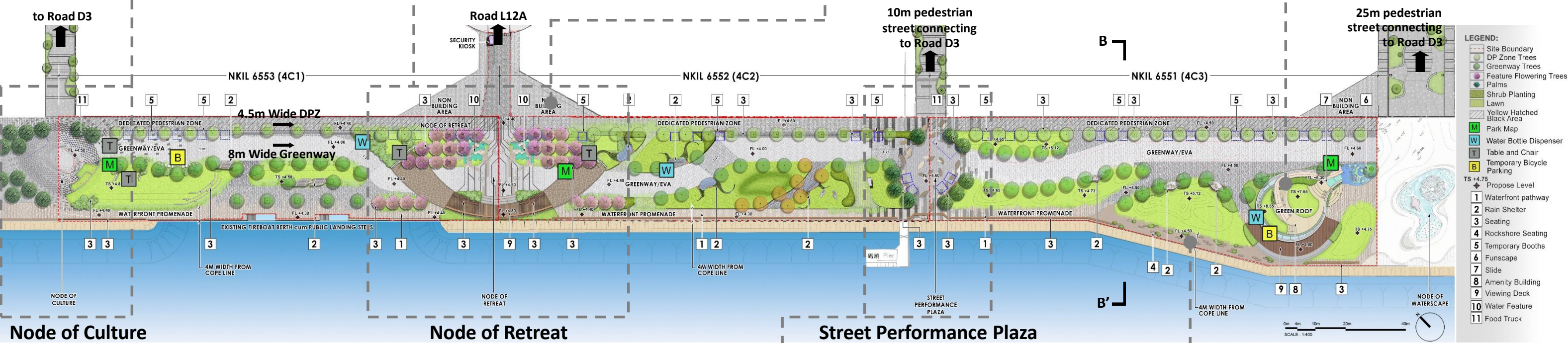
Proposals by Developers
Overall Layout of 4C1, 4C2 and 4C3

(Recommended) Option 2 - GreenWay Abutting Retail



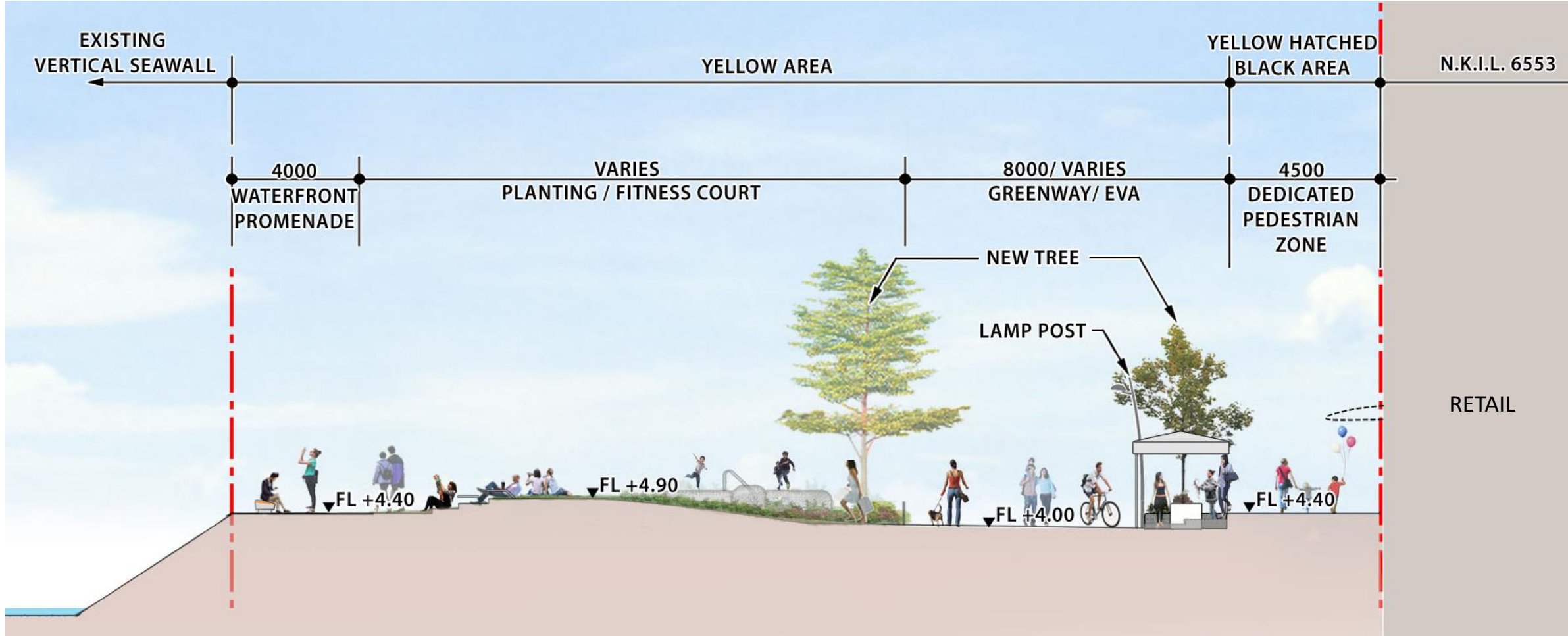
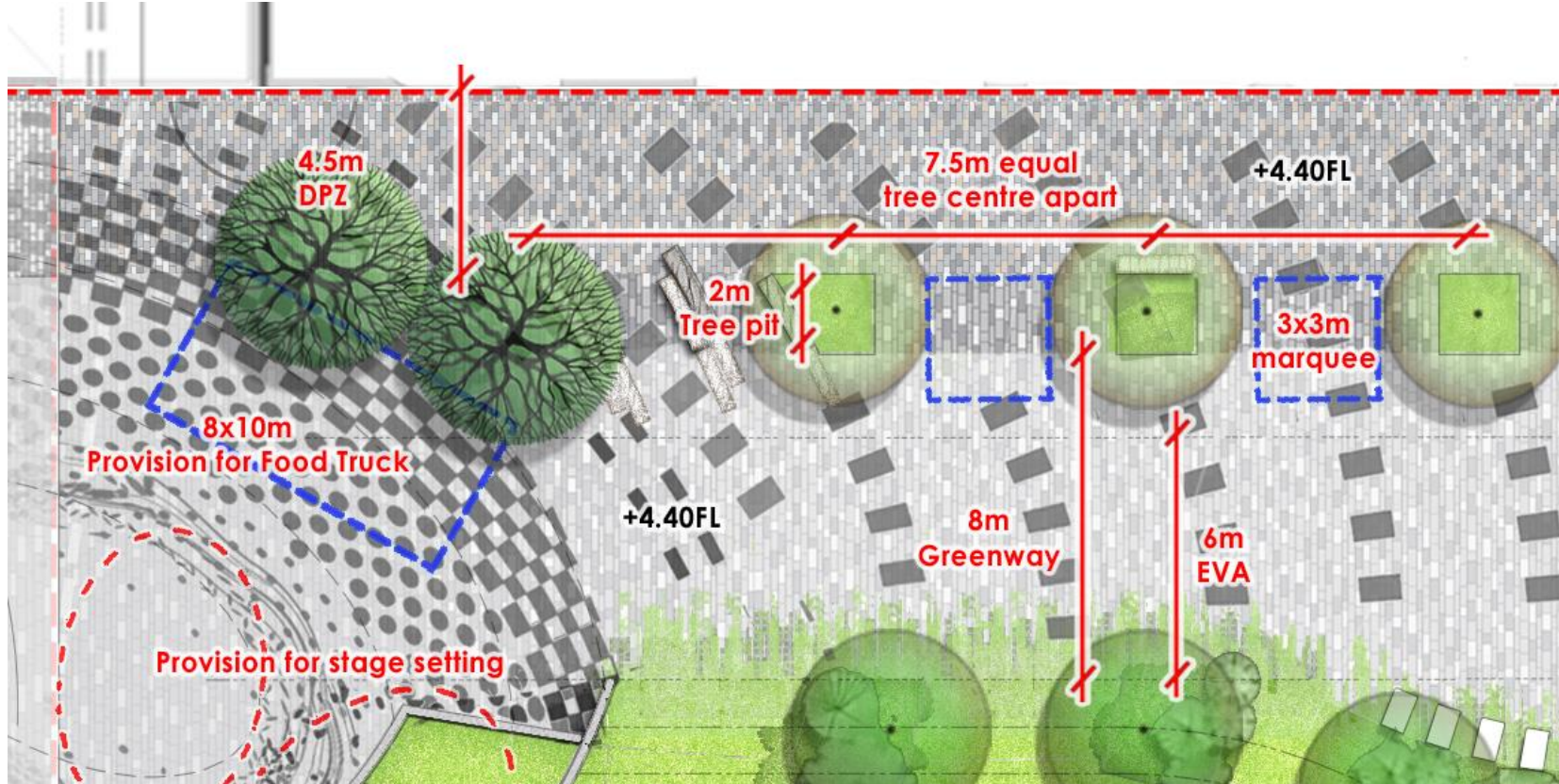
Proposals by Developers Combined Layout of 4C1, 4C2 and 4C3

(Recommended) Option 2 - GreenWay Abutting Retail

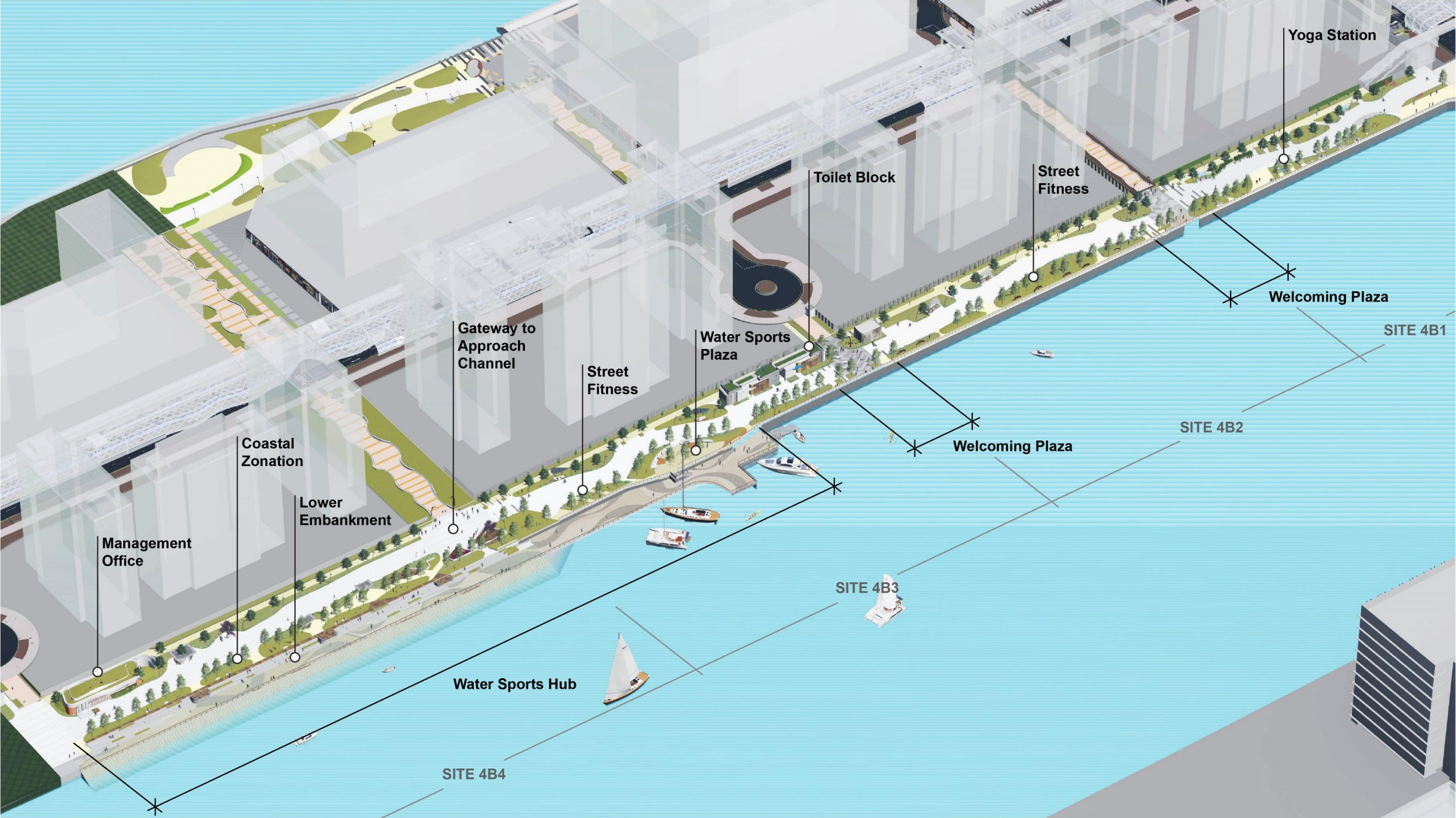


Possible Location for Temporary / Ad-hoc Event

*Remarks: Infrastructural provisions such as power supply and water points will be allowed at possible locations for temporary / ad-hoc set-up

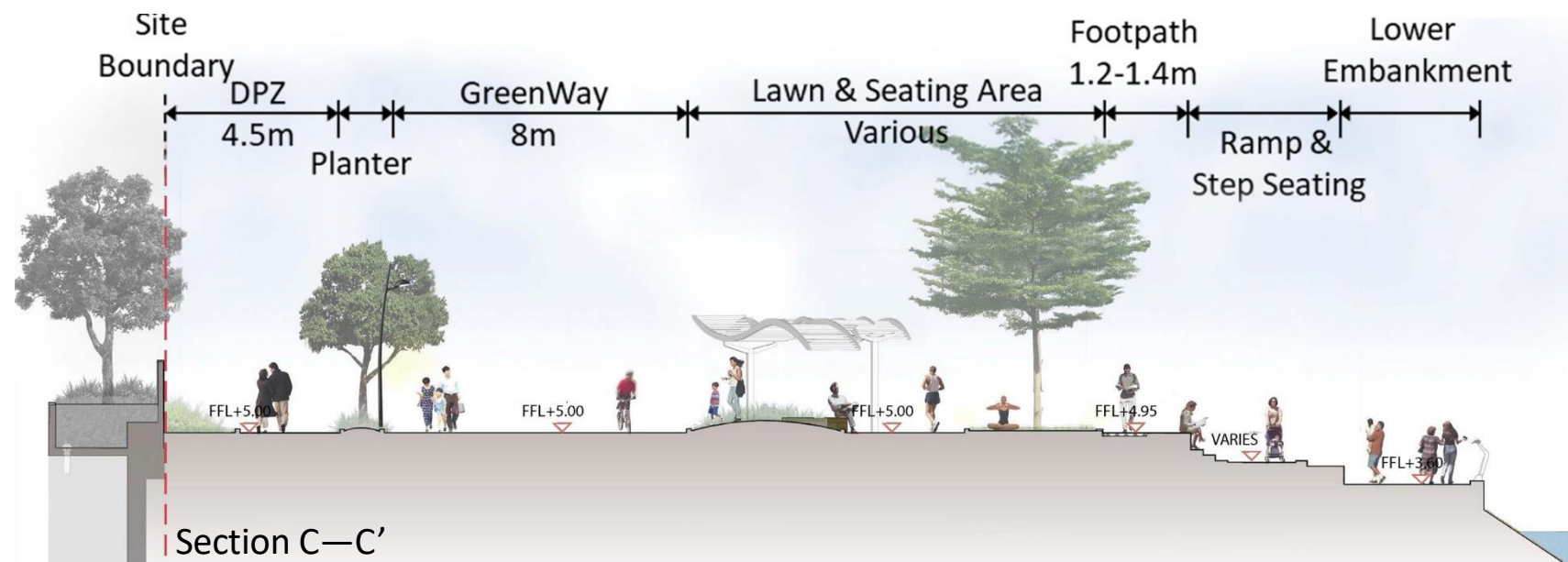
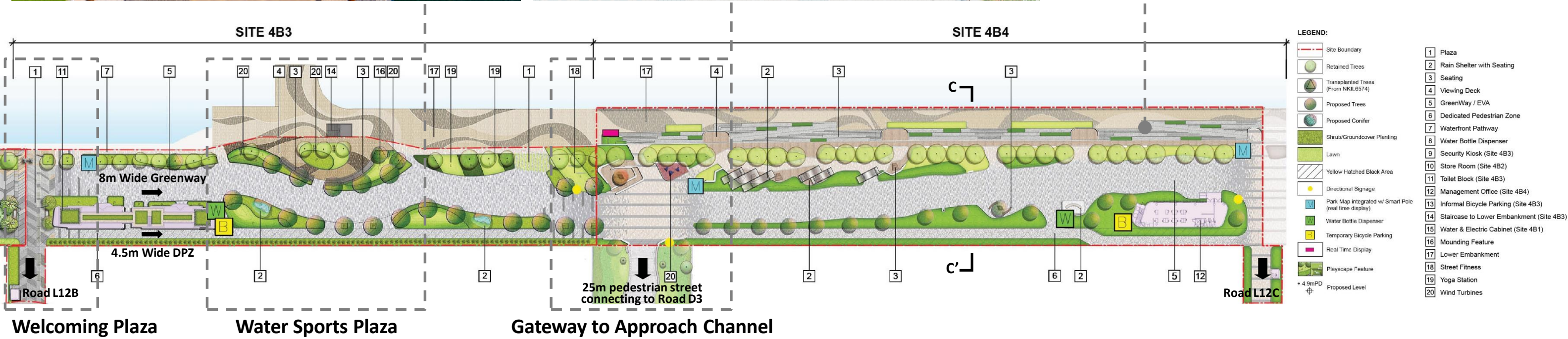


Proposals by Developers
Overall Layout of 4B1, 4B2, 4B3 and 4B4



Proposals by Developers

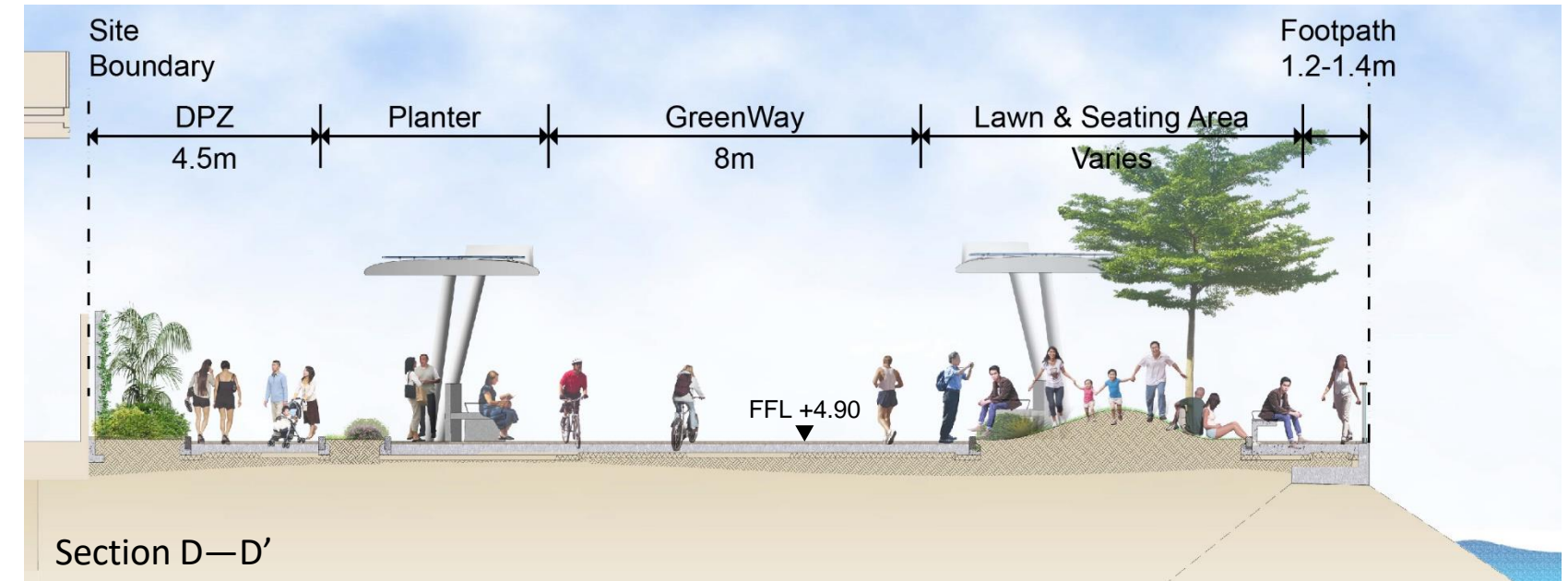
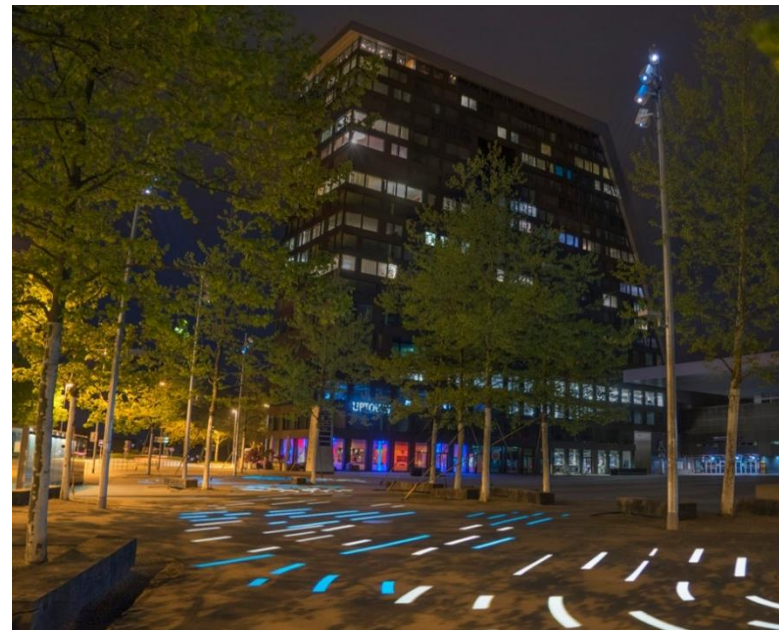
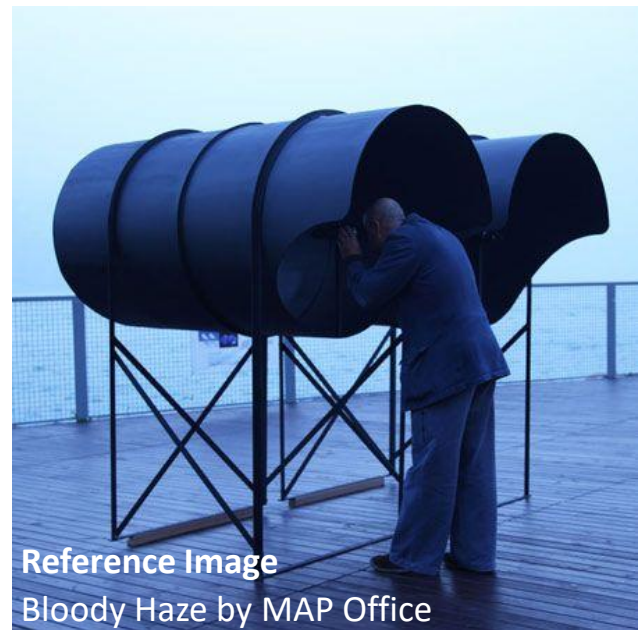
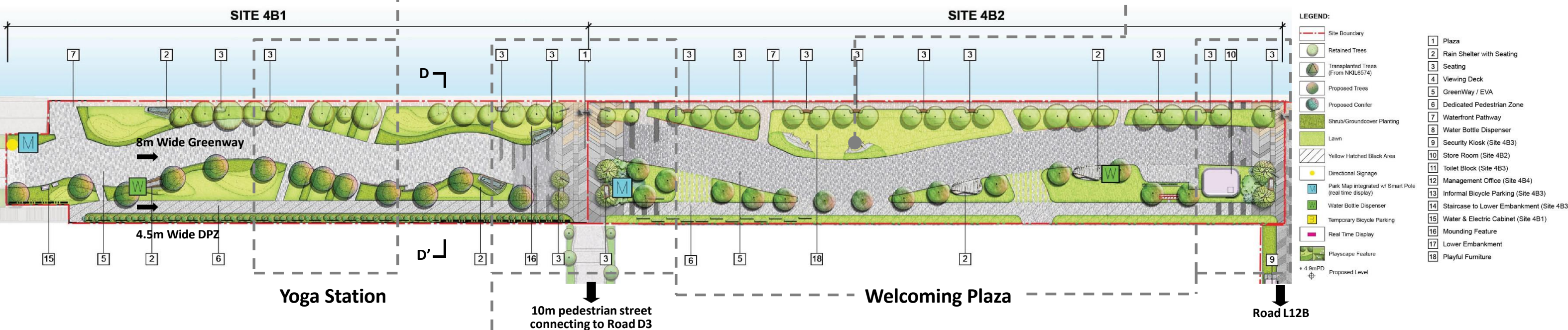
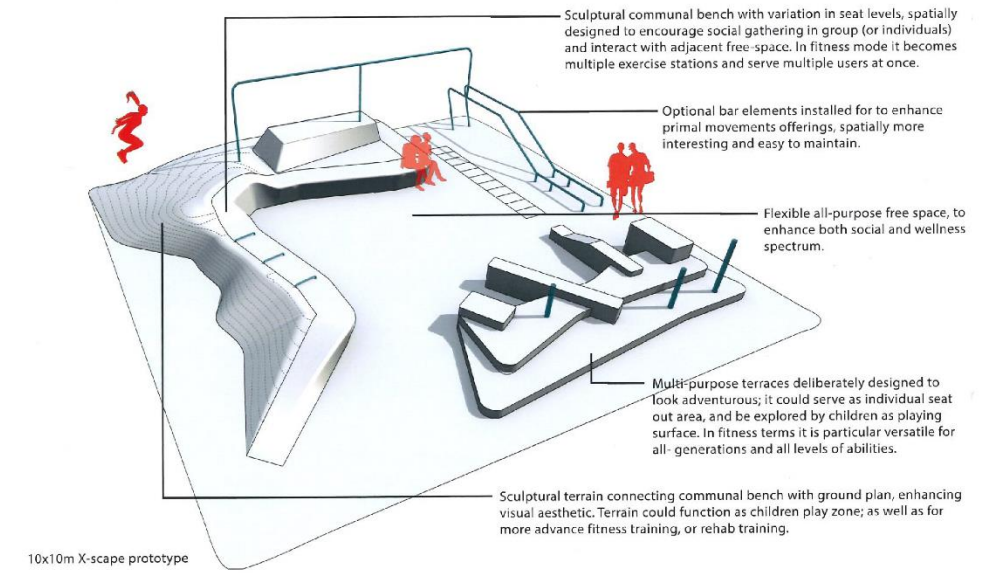
Combined Layout of 4B3 and 4B4



Proposals by Developers

Combined Layout of 4B1 and 4B2

Well-being



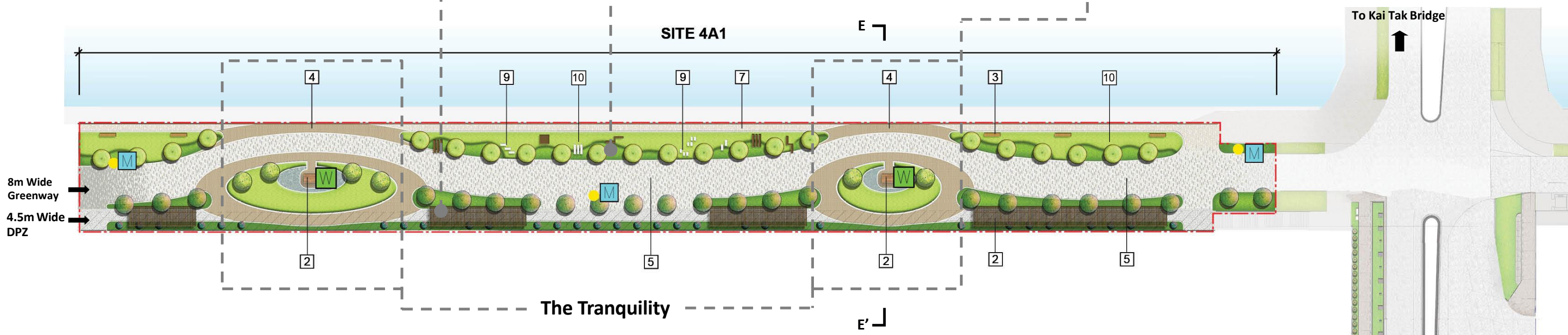
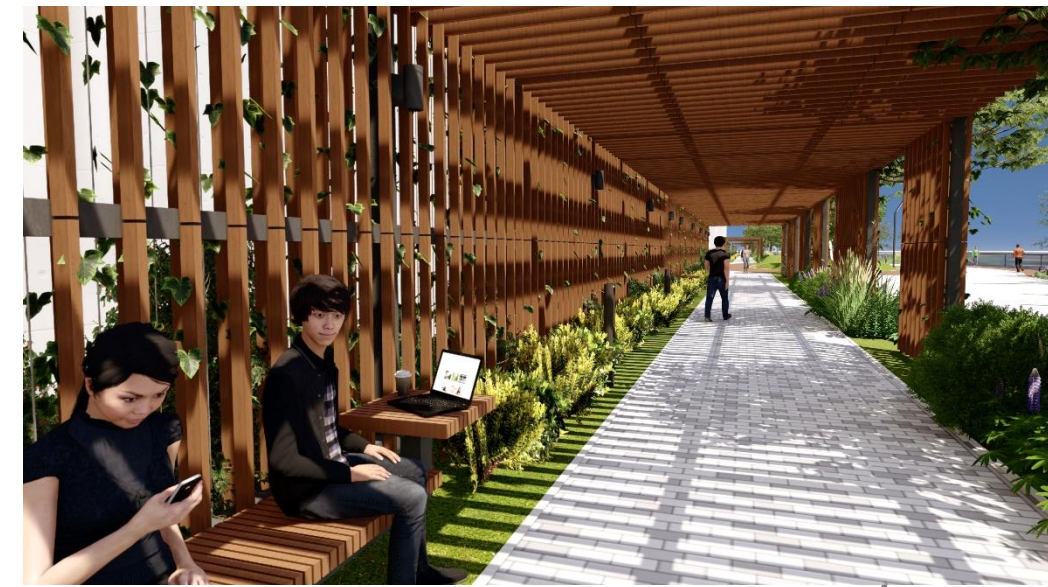
Proposals by Developers

Overall Layout of 4A1



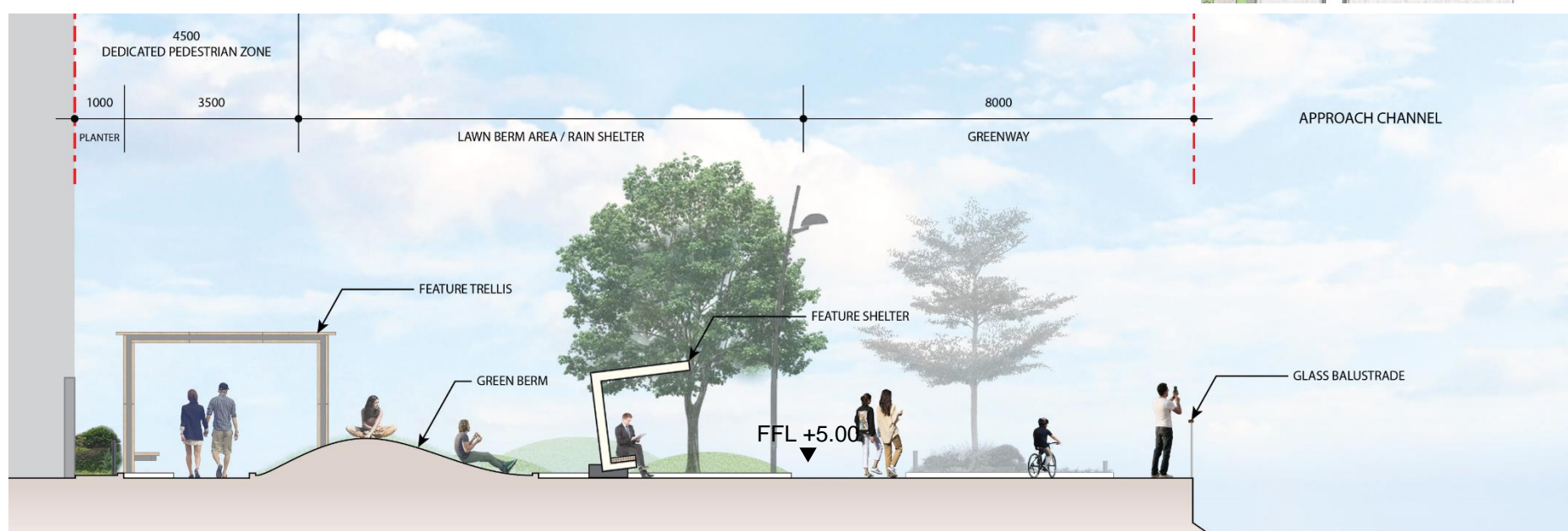
Proposals by Developers

Layout of 4A1



- LEGEND:**
- Site Boundary
 - Retained Trees
 - Transplanted Trees (From NKIL6574)
 - Proposed Trees
 - Proposed Conifer
 - Shrub/Groundcover Planting
 - Lawn
 - Playscape Feature
 - Yellow Hatched Black Area
 - Directional Signage
 - Park Map integrated w/ Smart Pole (real time)
 - Water Bottle Dispenser
 - Temporary Bicycle Parking
 - + 4.9mPD Proposed Level
 - 1** Plaza
 - 2** Rain Shelter with Seating
 - 3** Seating
 - 4** Viewing Deck
 - 5** GreenWay
 - 6** Dedicated Pedestrian Zone
 - 7** Waterfront Pathway
 - 8** Water Bottle Dispenser
 - 9** Playful Furniture
 - 10** Street Fitness

Section E—E'



Fence-Free Approach and Playscape



Fence-Free Approach



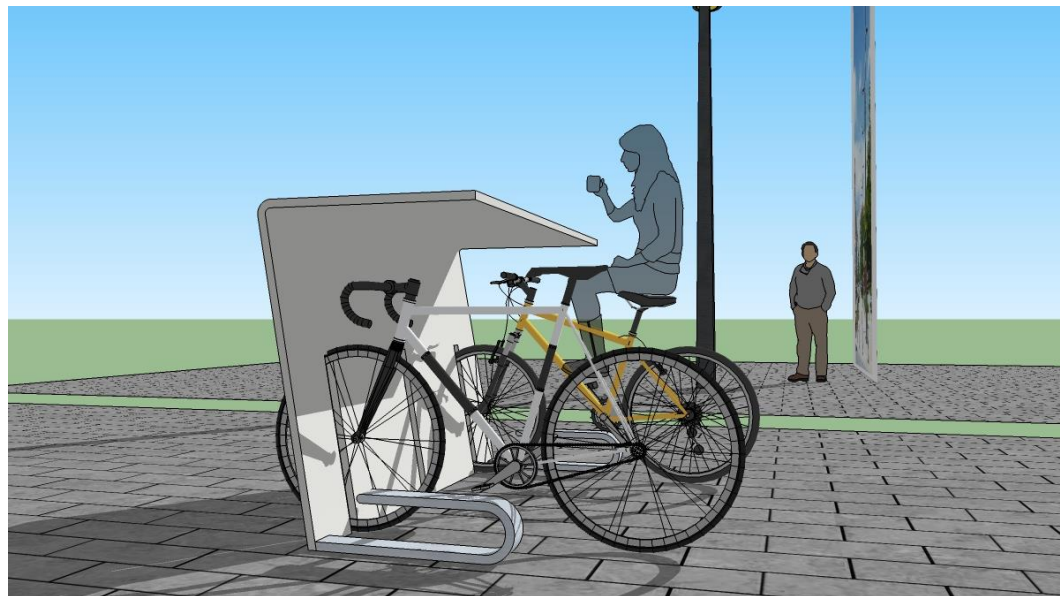
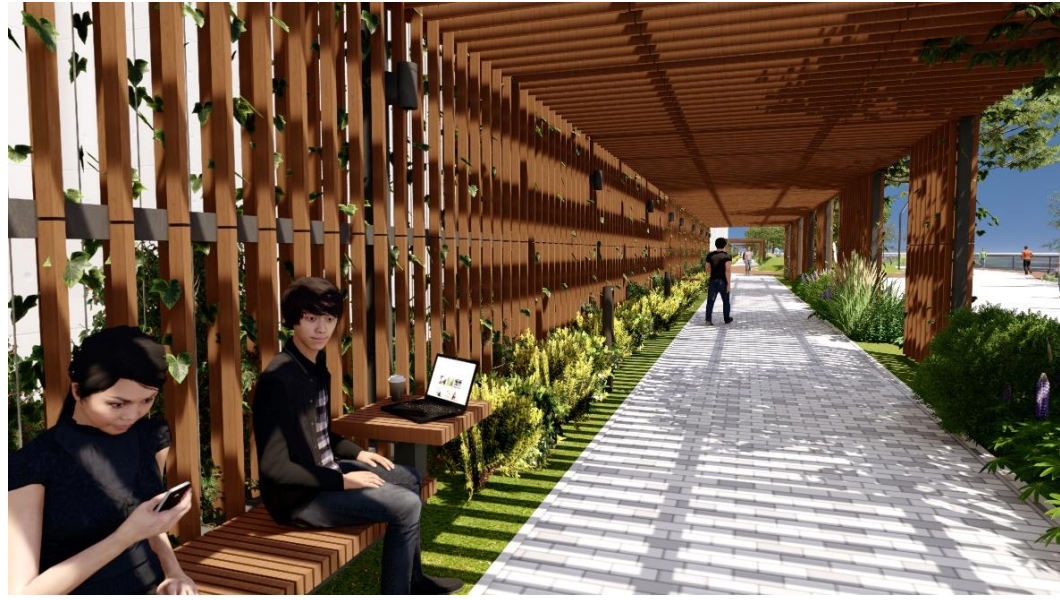
Playscape - Slide



Playscape Features

Feature Elements

*Remarks: Some of the proposed features are subject to further study in detailed design stage



Feature Seating with Table



Feature Lighting



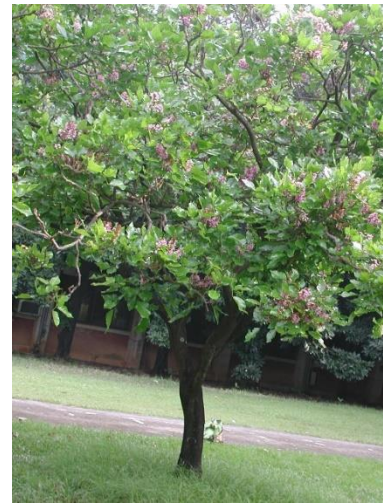
Smart Pole



Historical Walk

Structural Trees and Thematic Trees

Structural Trees



Thematic Trees

● *Terminalia mantaly*
小葉欖仁

● *Terminalia mantaly 'tricolor'*
錦葉欖仁

● *Pongamia pinnata*
水黃皮

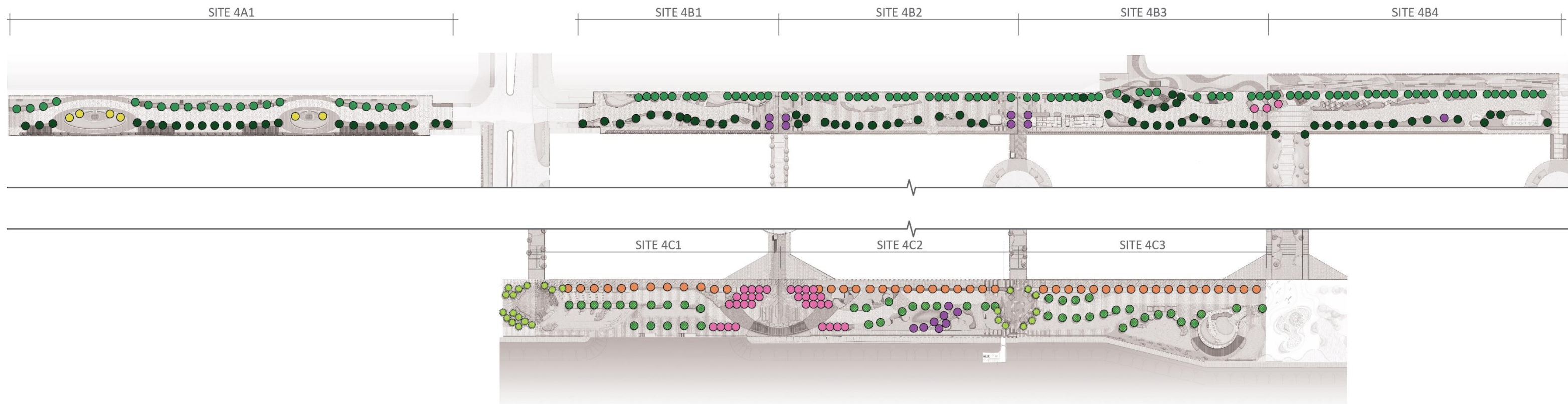
● *Elaeocarpus decipiens*
杜英

● *Osmanthus fragrans*
桂花

● *Lagerstroemia speciosa*
大花紫薇

● *Chorisia speciosa*
美人樹

● *Cinnamomum camphora*
樟



Thematic Planting



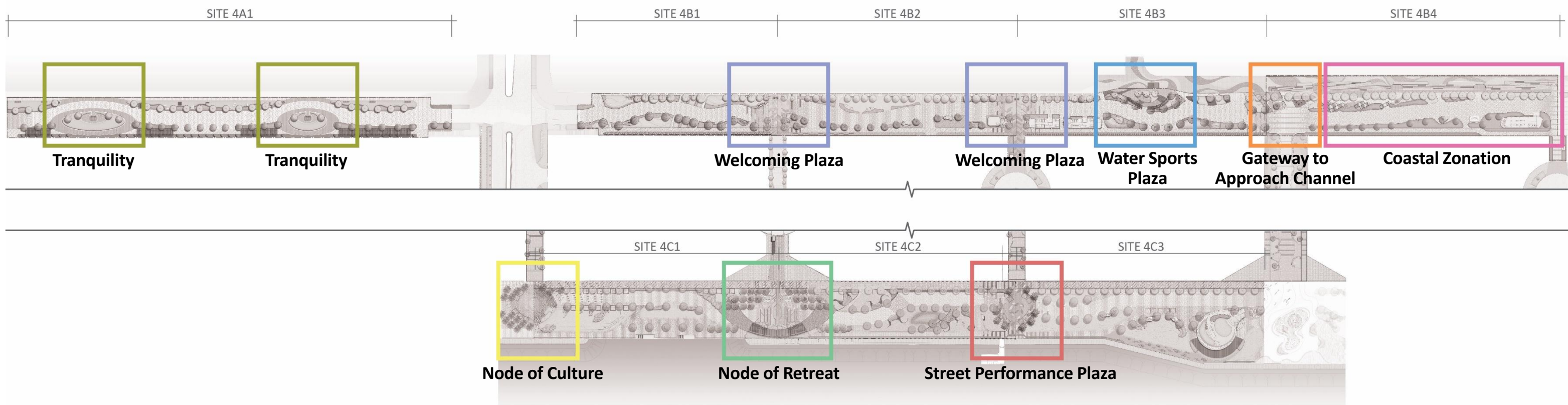
Tranquility

Welcoming Plaza

Water Sports Plaza

Gateway to Approach Channel

Coastal Zonation



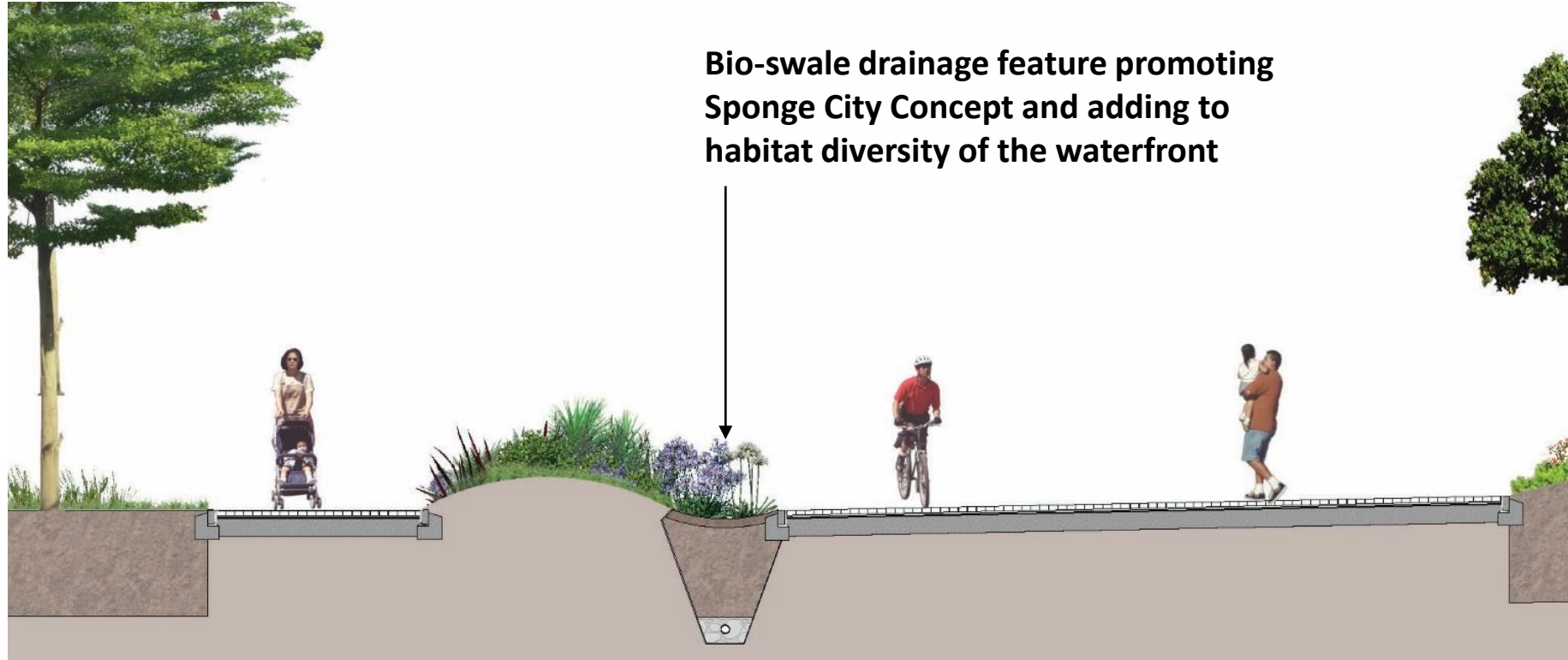
Node of Culture

Node of Retreat

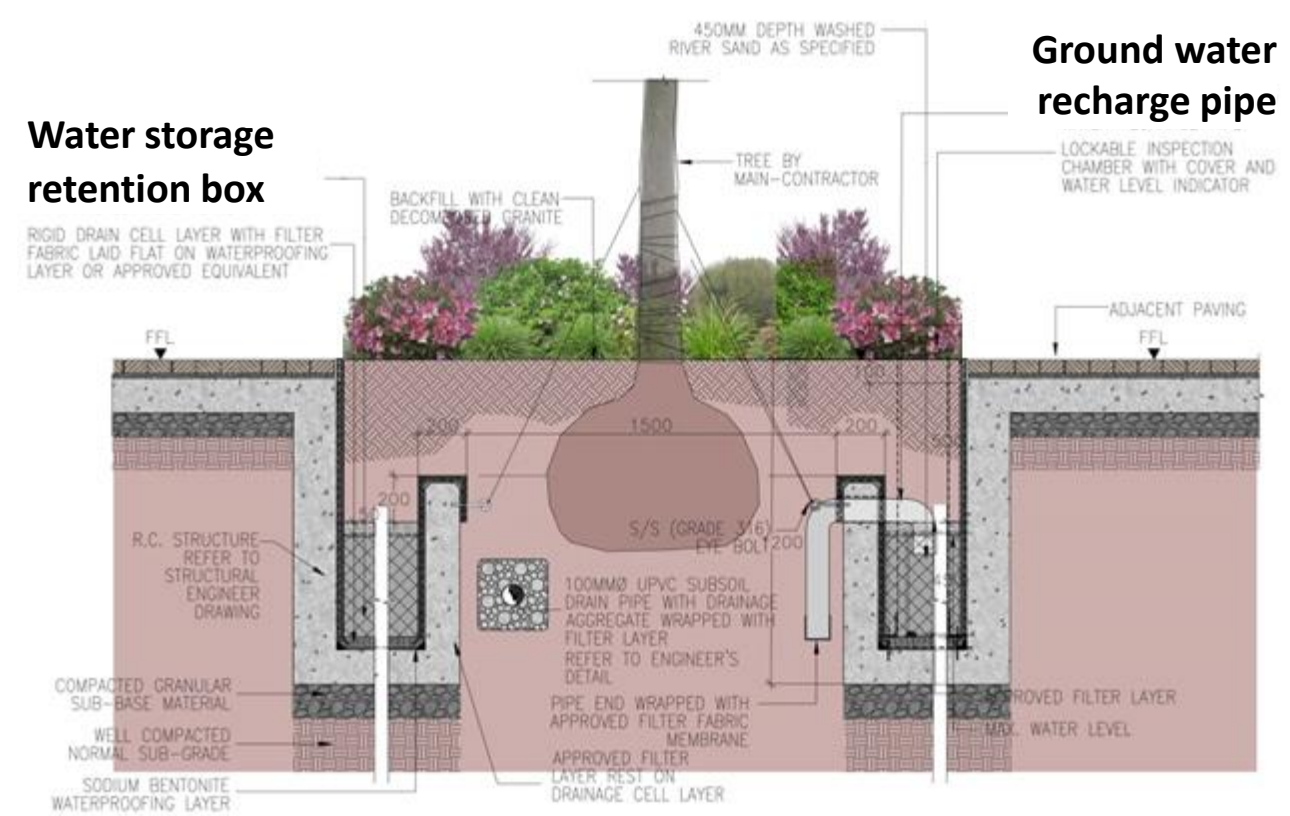
Street Performance Plaza

Sustainable Features

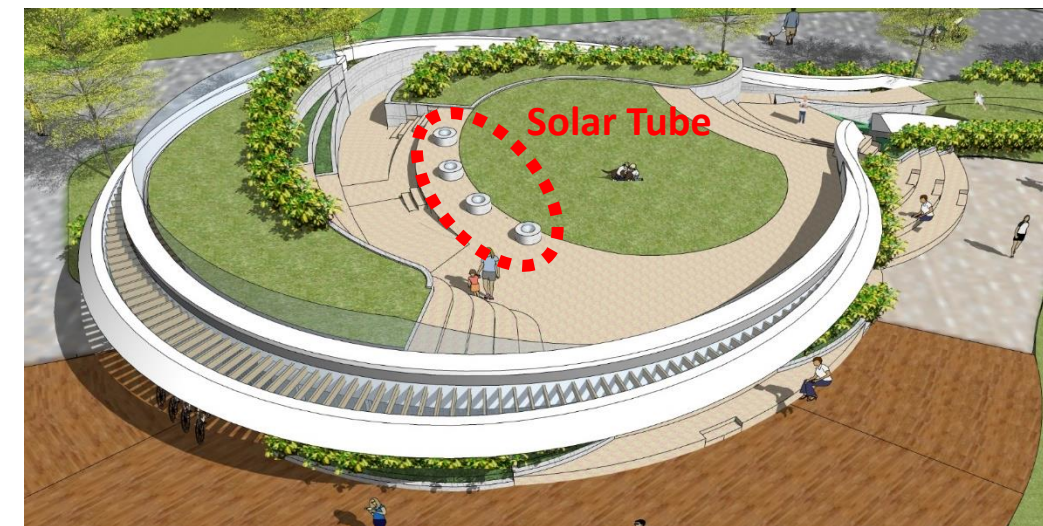
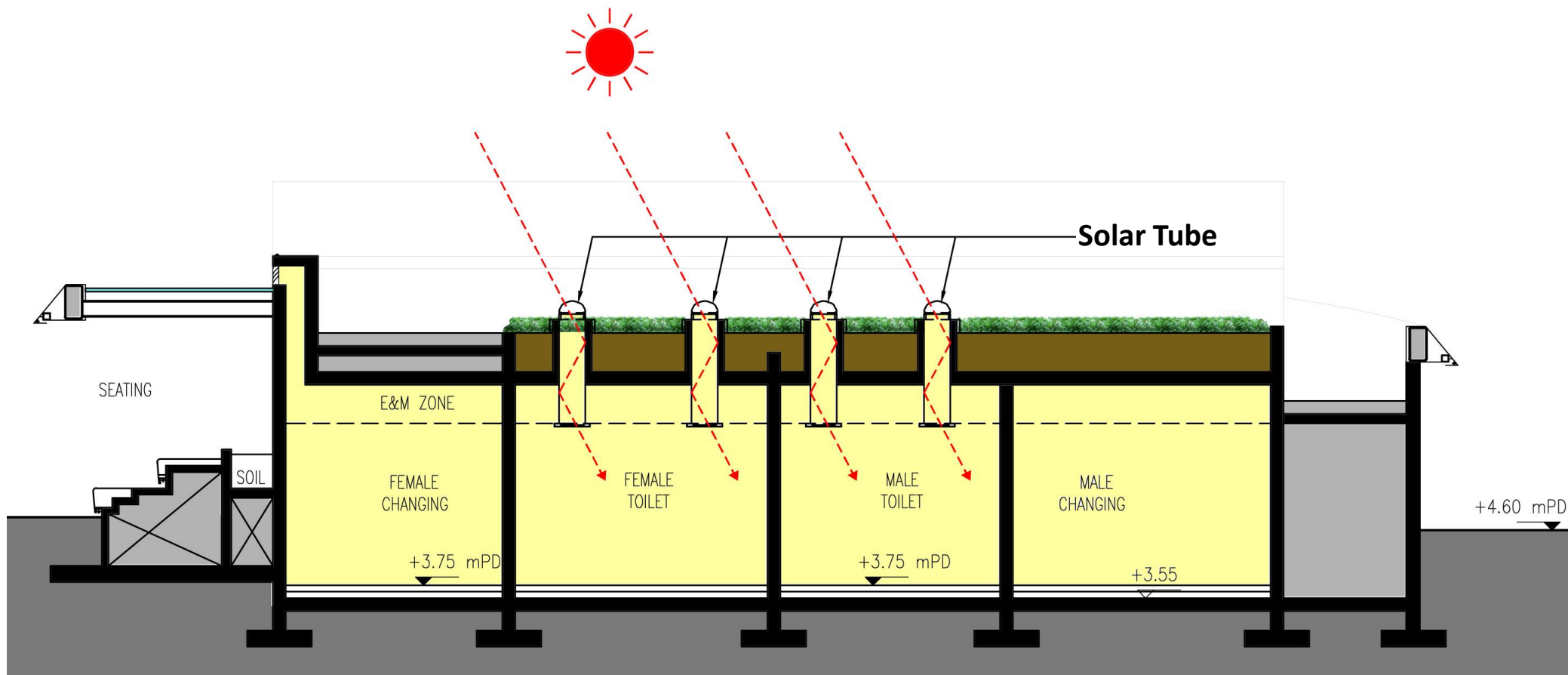
Bio-swale Drainage Feature



Zero Irrigation System

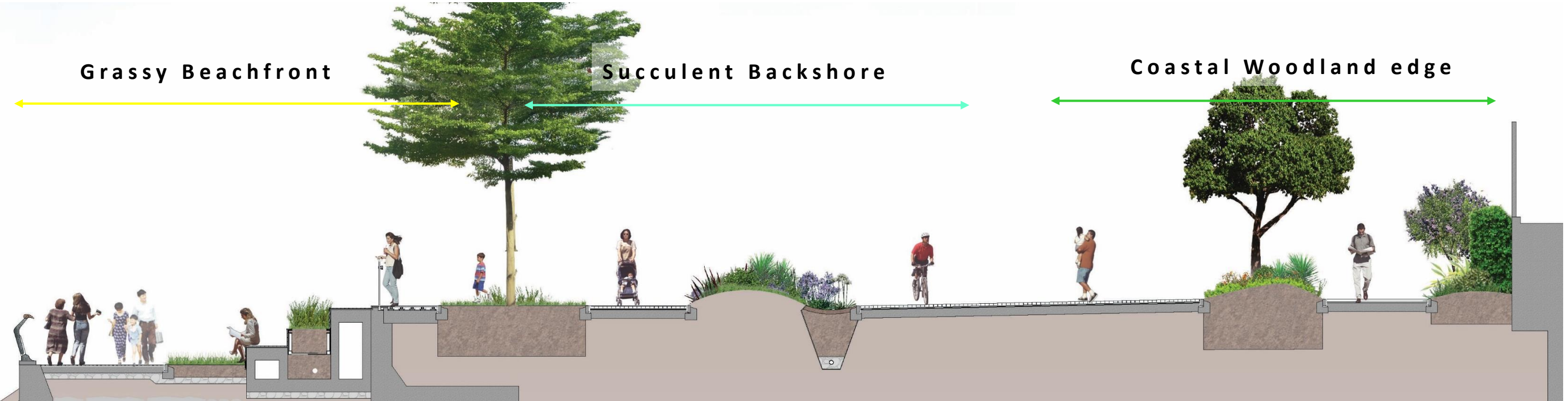
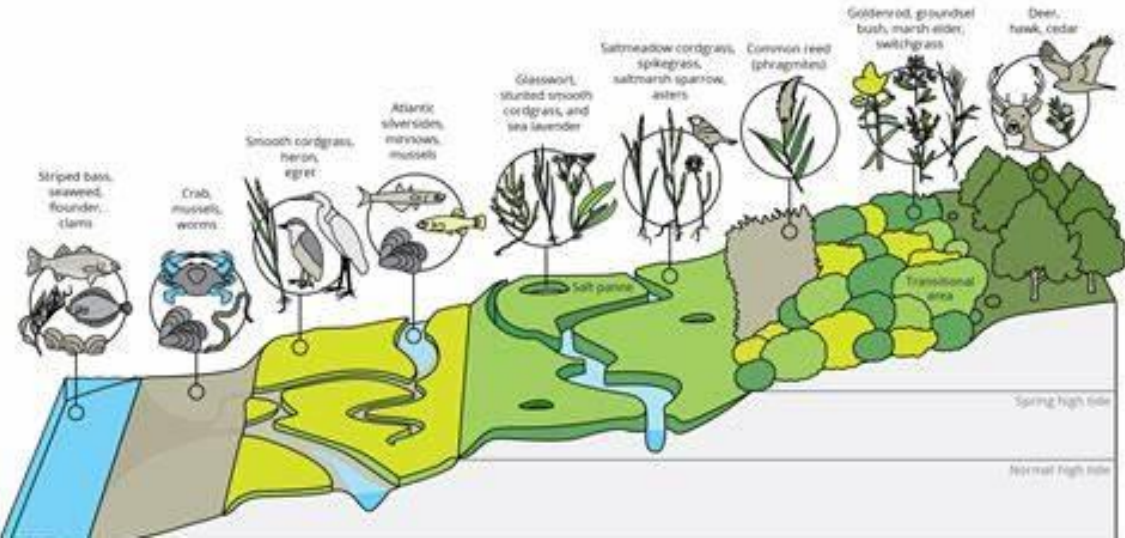


Solar Tube



Coastal Zonation Planting Concept

Reflecting the character of the vegetation patterns found along a natural sandy shoreline



Smart Features

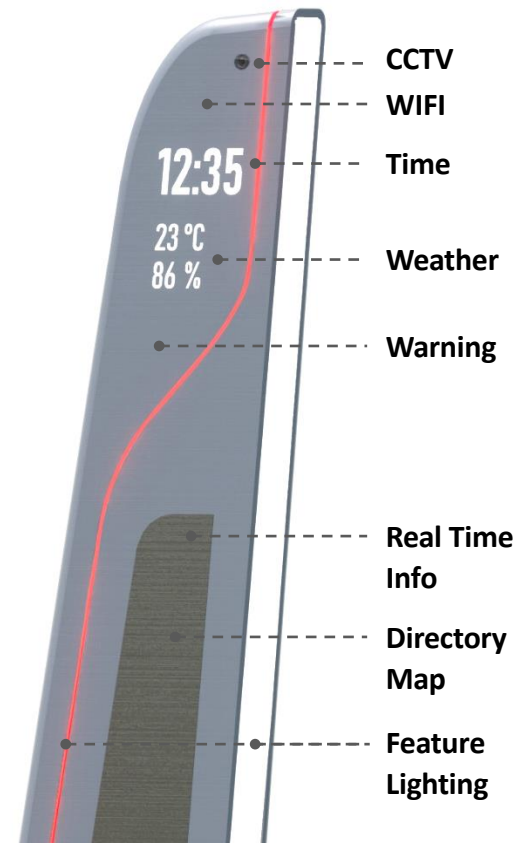
*Remarks: Infrastructural provisions such as power supply and cable containment will be allowed for future installation of Smart cycling and Charging Station



QR Code



Real Time Information



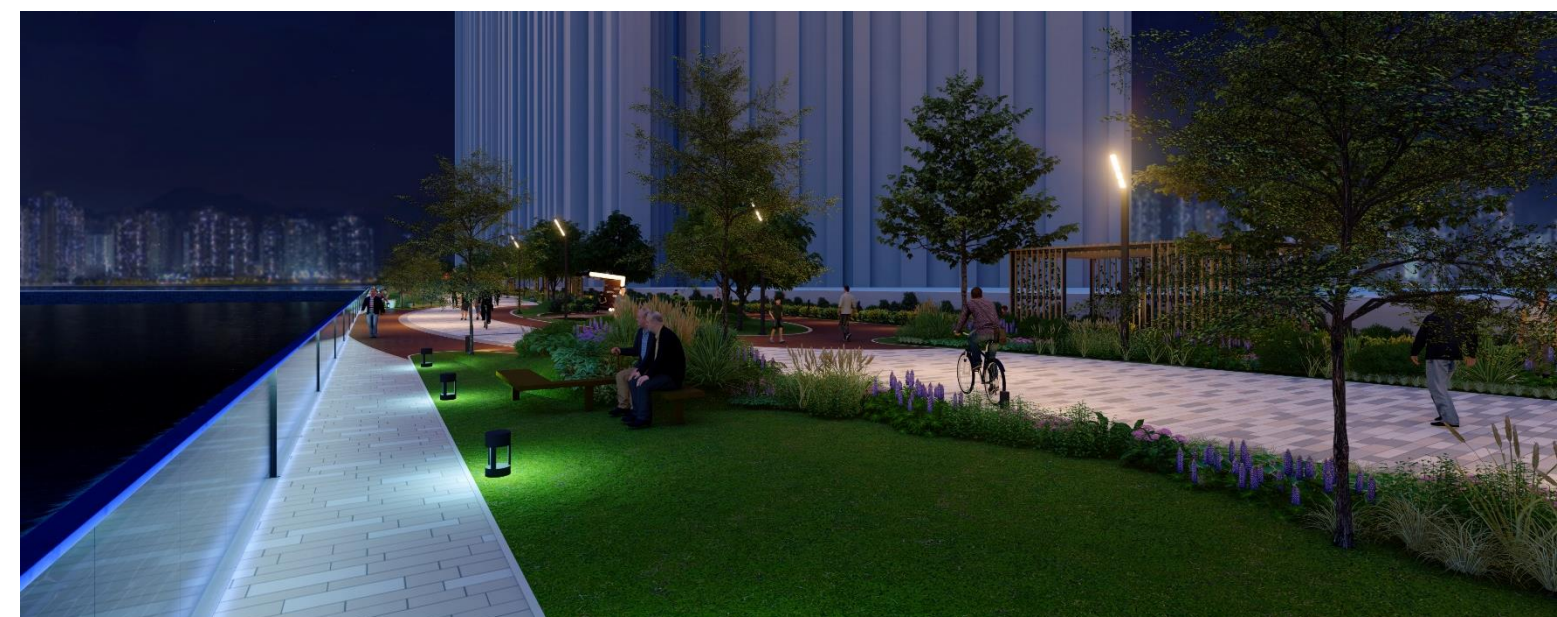
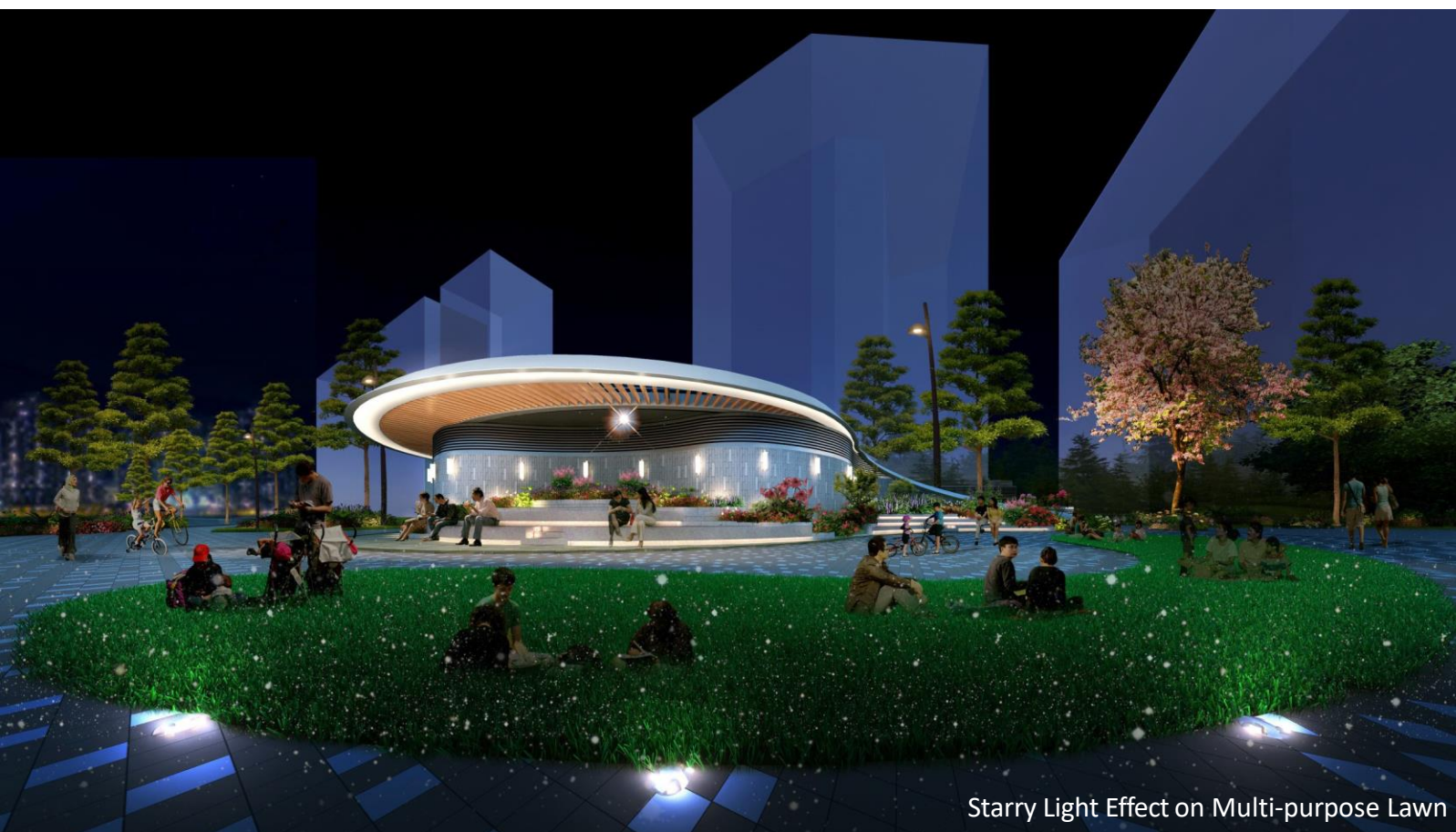
Smart Cycling



Phone Charging Station



Lighting Design



Thank You