

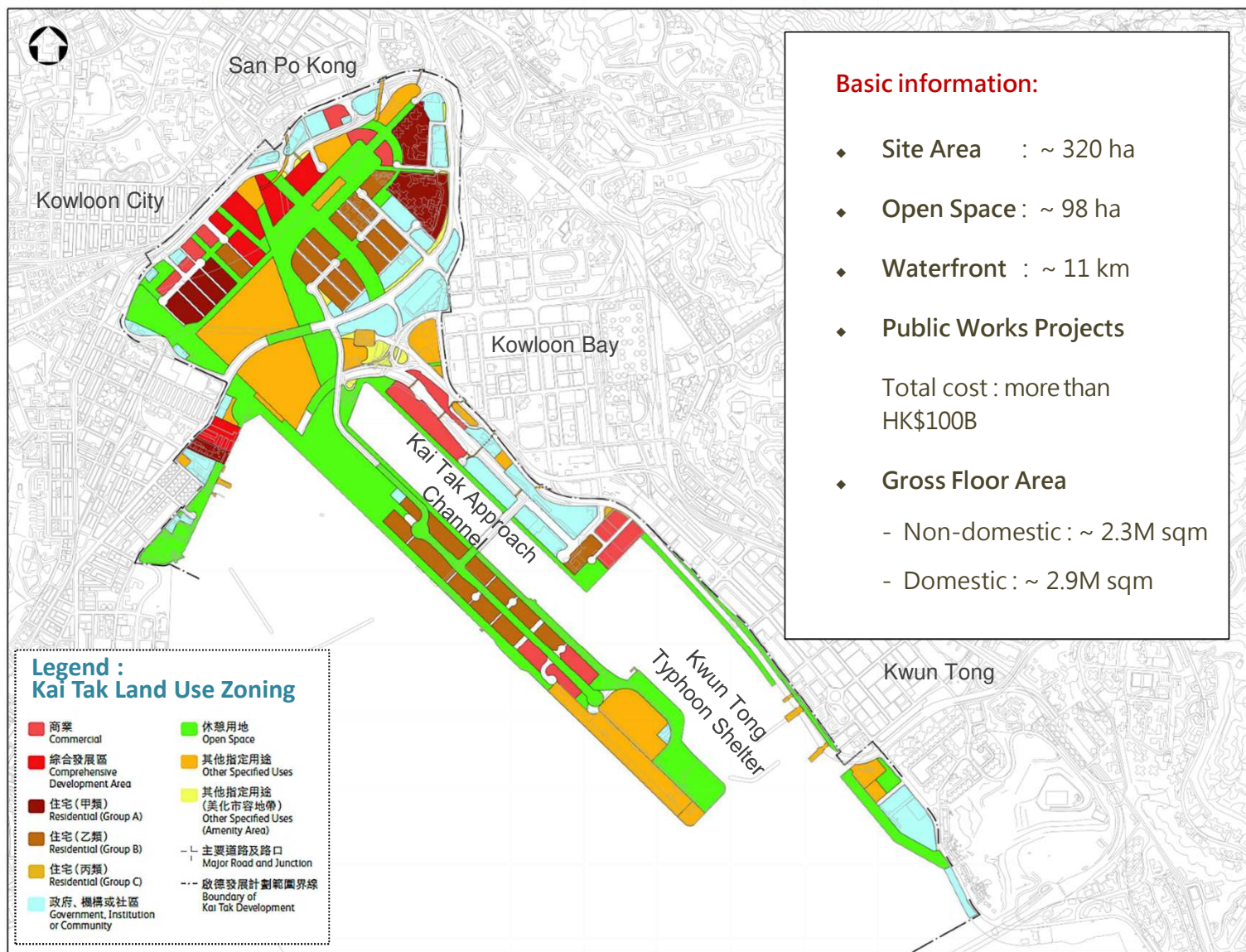


Task Force on Kai Tak Harbourfront Development

Kai Tak Development Progress Report as of August 2018

(Paper No. TFKT/12/2018)

Kai Tak Outline Zoning Plan (S/K22/6)



Basic information:

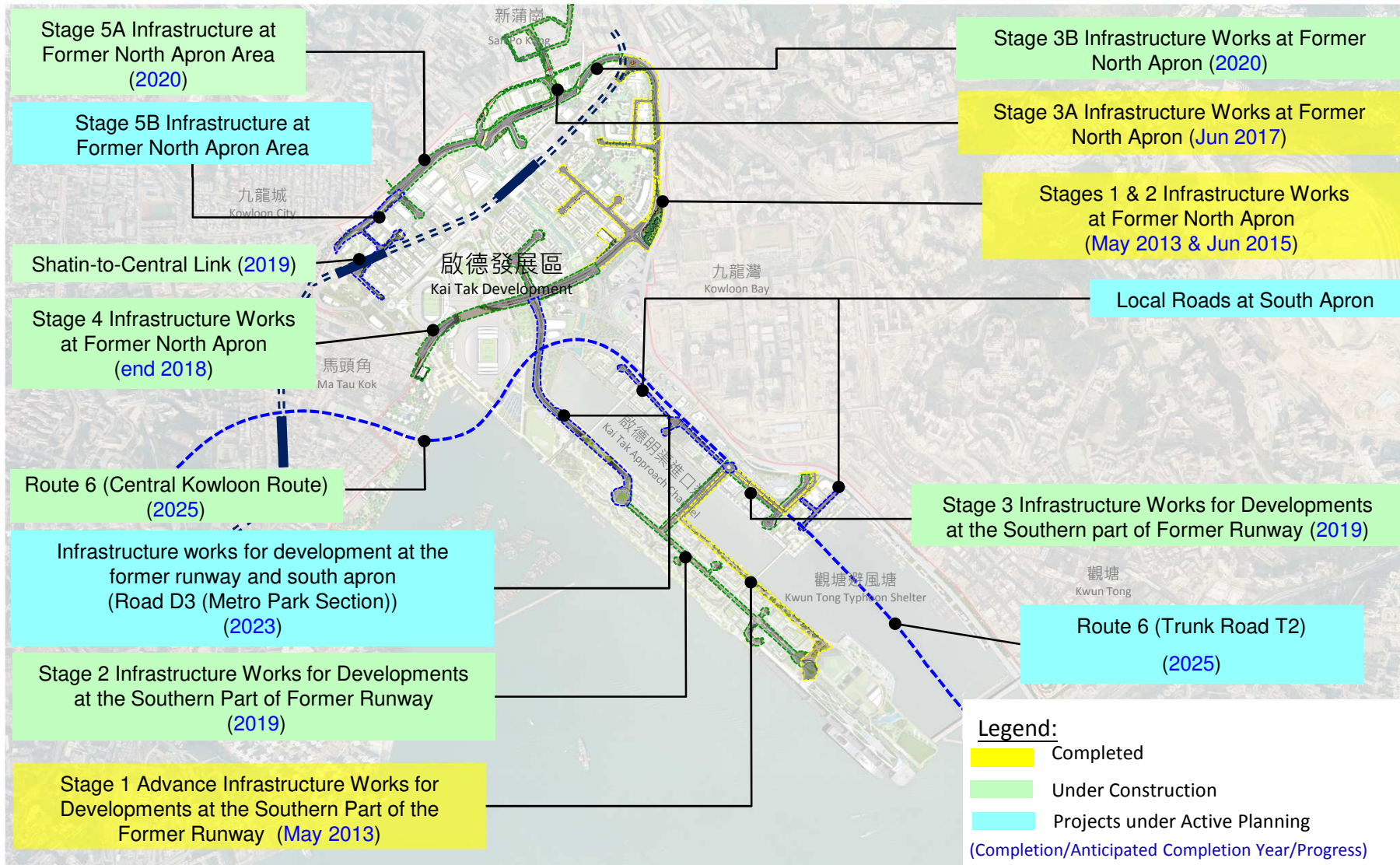
- ◆ Site Area : ~ 320 ha
 - ◆ Open Space : ~ 98 ha
 - ◆ Waterfront : ~ 11 km
 - ◆ Public Works Projects
- Total cost : more than HK\$100B
- ◆ Gross Floor Area
 - Non-domestic : ~ 2.3M sqm
 - Domestic : ~ 2.9M sqm

S:\Drawing\CDEKAT\MISC\Q2P SK22-6.ppt\Q2P SK22-6.ppt.dgn

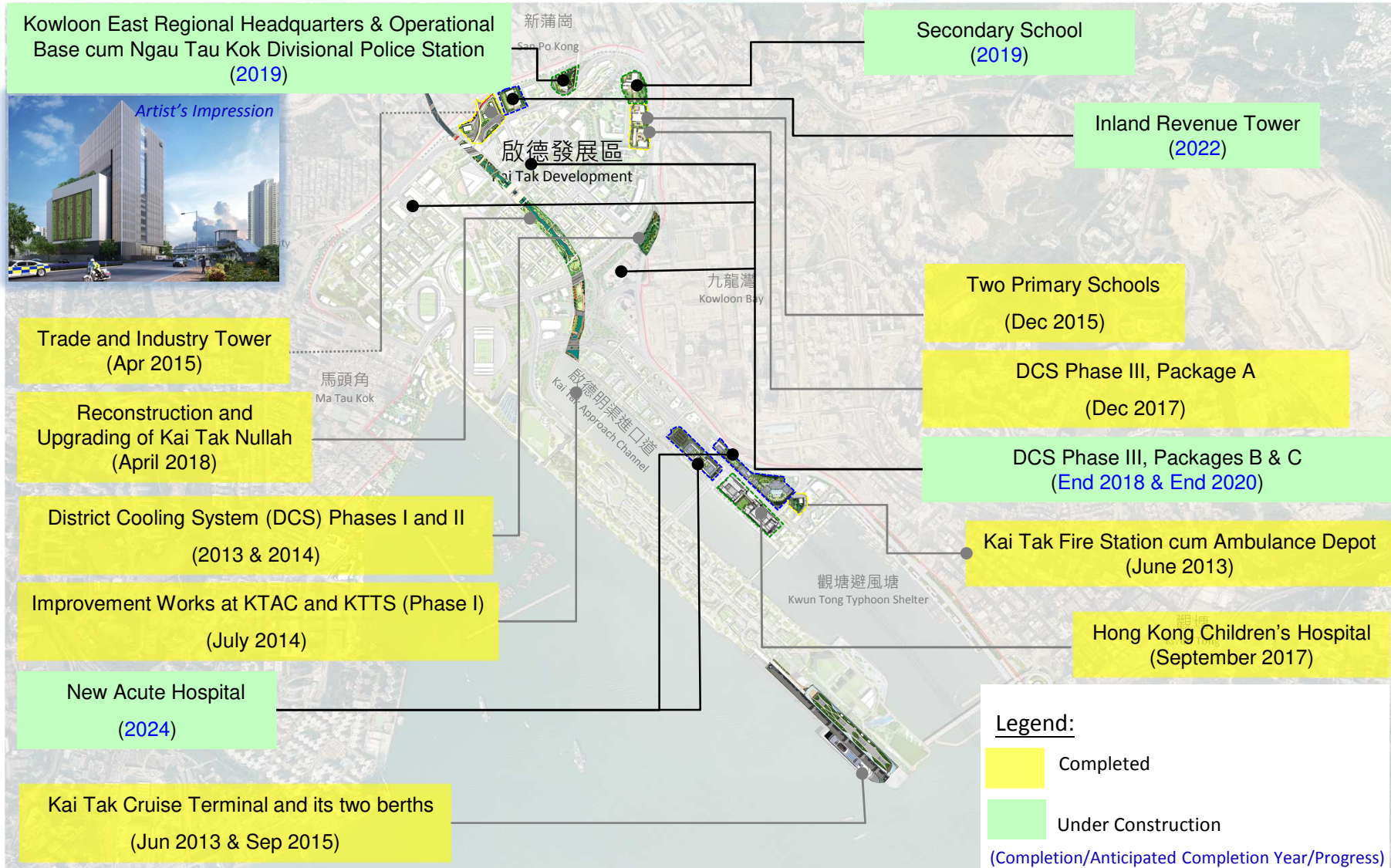




Major Roadworks and Transport Infrastructure



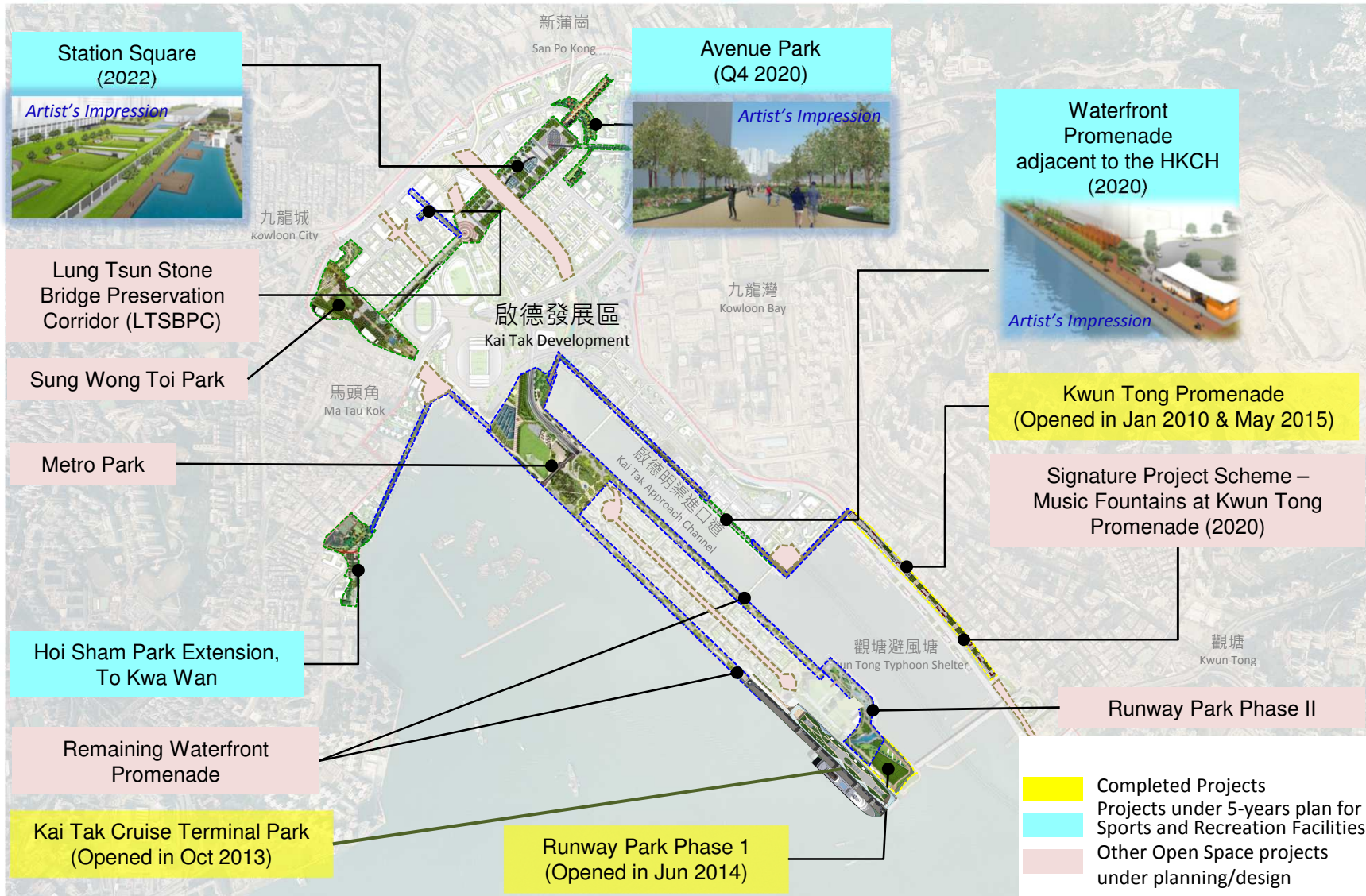
Major GIC Buildings / Facilities



Major GIC Buildings / Facilities



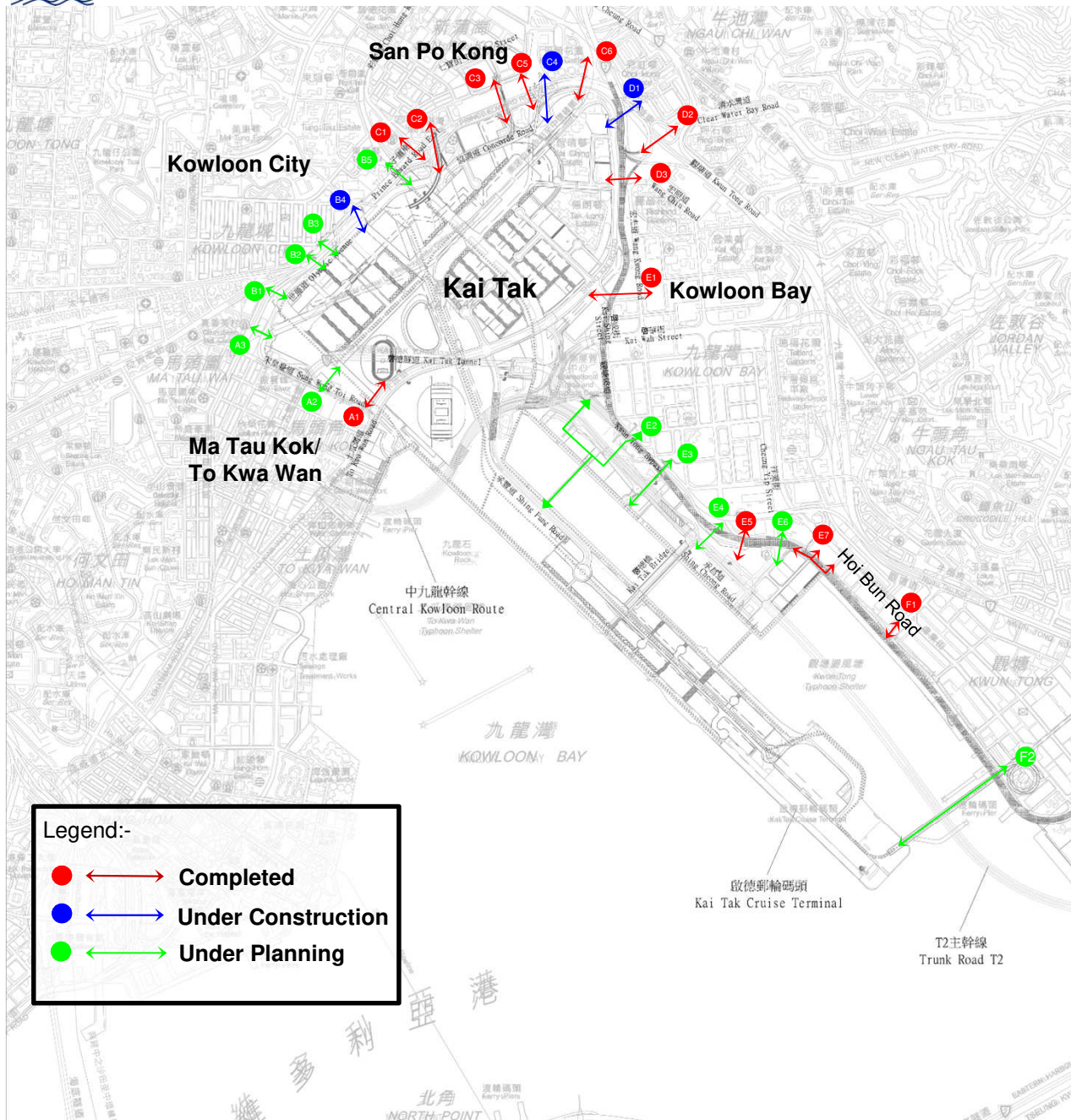
Open Space Projects



Studies on KTD



Pedestrian Connections with Hinterlands



Legend:-

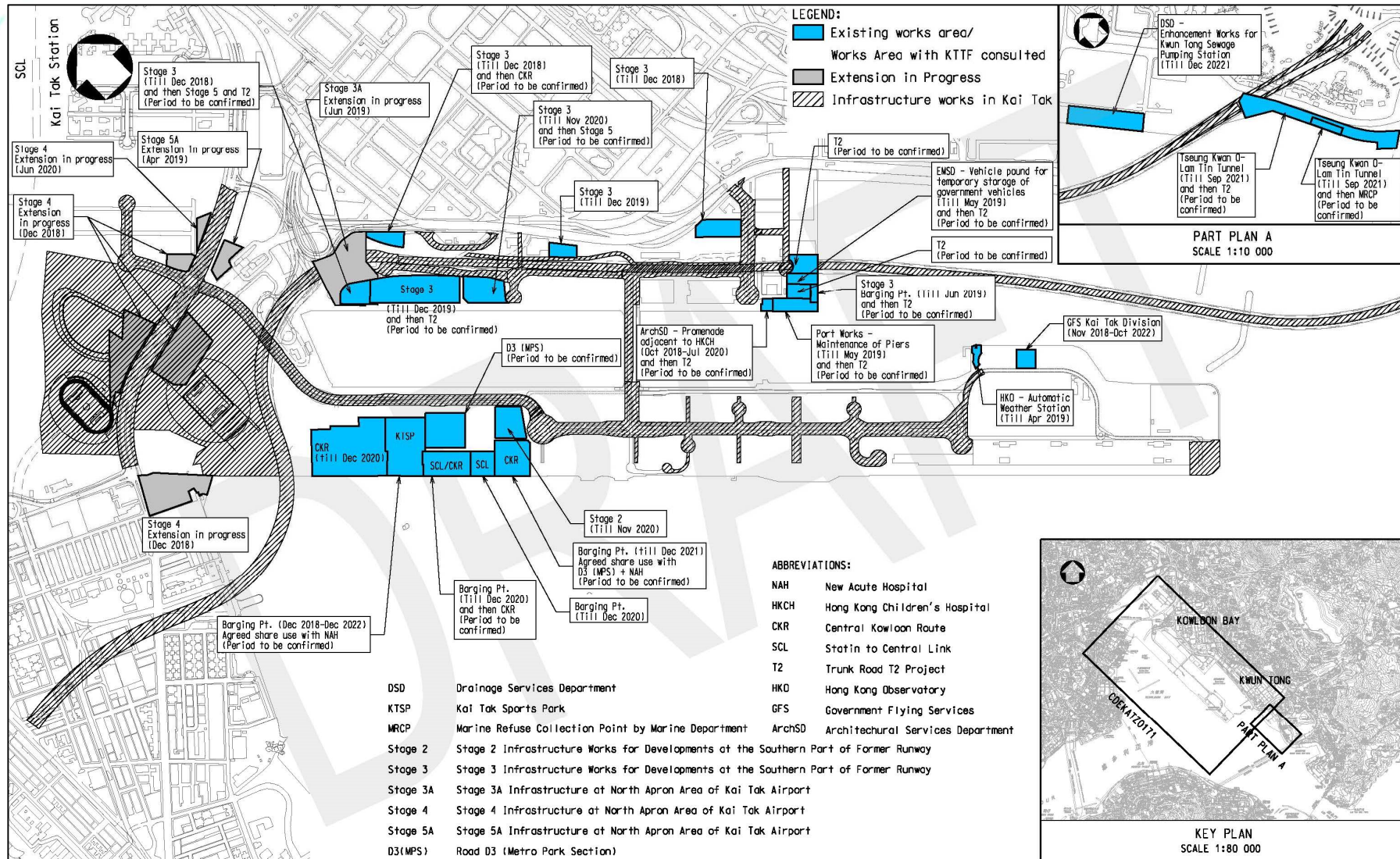
- **Completed**
- **Under Construction**
- **Under Planning**

Pedestrian Connections

- A1 At-grade crossing at To Kwa Wan Road/Sung Wong Toi Road
- A2 At-grade crossing / footbridge crossing over Sung Wong Toi Road
- A3 At-grade crossing at Olympic Ave
- B1 Enhance and extend existing subways at Olympic Garden
- B2 Enhance existing subway underneath PERE
- B3 Subway to connect Nga Tsin Wai Road to underground Shopping Street (USS)
- B4 Subway to connect Lung Tsun Stone Bridge Preservation Corridor with Shek Ku Lung Road Playground
- B5 Subway adjacent to Kai Tak River
- C1 Enhance existing subway at the interchange between PERE and Choi Hung Road
- C2 Curvilinear landscaped elevated walkway connecting the Latitude
- C3 Subway to connect King Tai Court and USS
- C4 Landscaped elevated walkway to connect to open space
- C5 Enhance existing subway underneath PERE and extend to connect to open space adjoining Rhythm Garden
- C6 Footbridge to connect Rhythm Garden
- D1 Subway to connect Choi Hung Estate
- D2 Enhance existing subway near Ping Shek Estate / Choi Hung Estate
- D3 Enhance at-grade crossing near Richland Gardens
- E1 Several at-grade crossing via Eastern Road and Kai Wah Street
- E2 Elevated walkway from KITEC across Kai Fuk Road through north of South Apron area to Metro Park
- E3 Extension / modification of existing footbridge above Kai Fuk Road
- E4 Landscaped elevated walkway to connect KTNHAH
- E5 Existing underpass underneath Kwun Tong Bypass
- E6 Enhance existing at-grade crossing at Cheung Yip Street / Hoi Bun Road
- E7 Existing at-grade crossing across Hoi Bun Road
- F1 Enhance several at-grade crossing along Hoi Bun Road
- F2 Bridge link to connect Kwun Tong waterfront with Kai Tak Point



Details of Temporary Government Land Allocations near Harbourfront in KTD



Thank You