



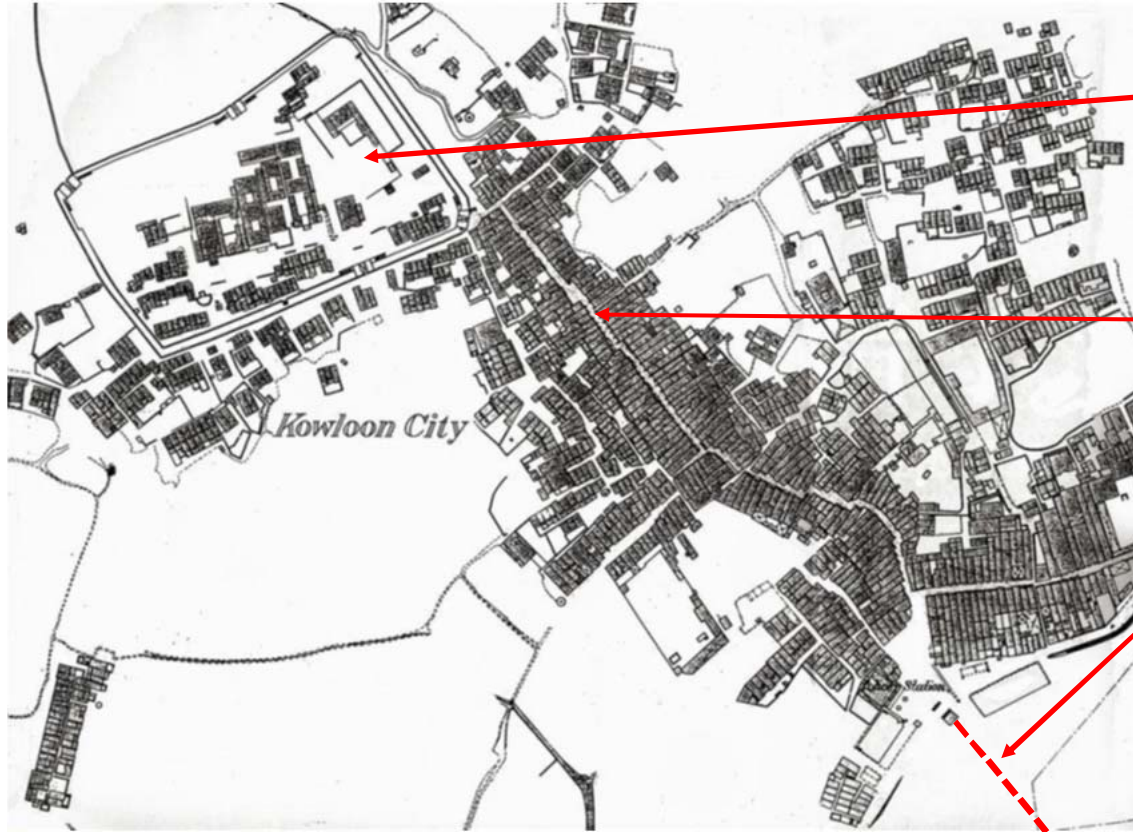
Lung Tsun Stone Bridge Preservation Corridor at Kai Tak
龍津石橋保育長廊

Harbourfront Commission Meeting on Kai Tak Development 1 Nov 2017

- 1 Background 背景
- 2 Project Scope 項目範圍
- 3 Site Context 工地情況
- 4 Design Concept 設計理念
- 5 Design Proposal 設計建議

HISTORY

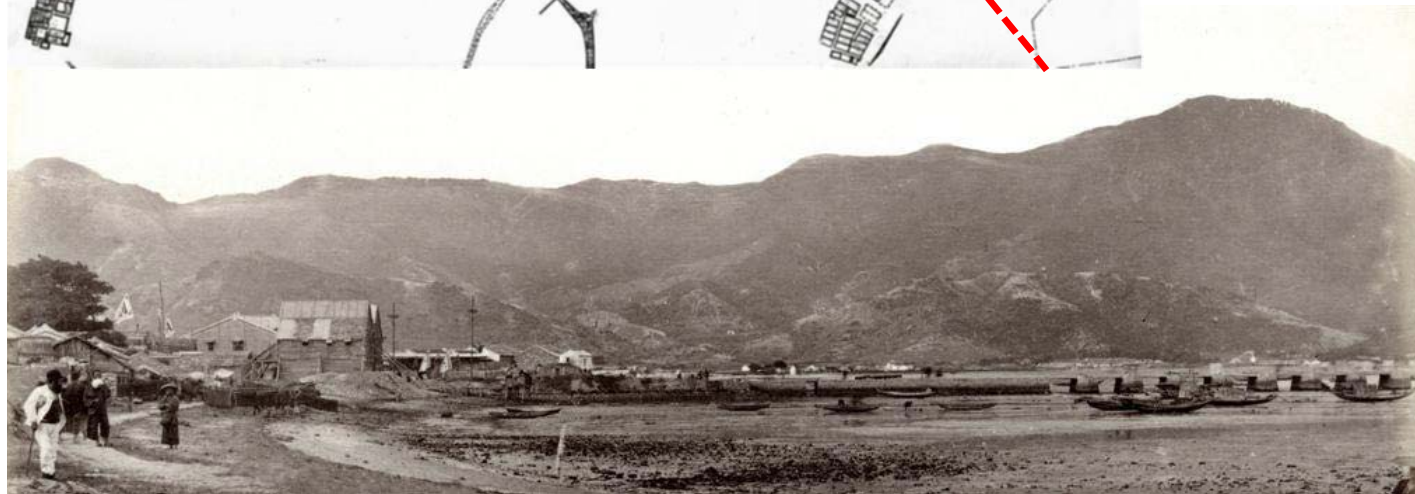
- It served as a landing pier for Kowloon City area for over 60 years
- It tells the story of early life of Kowloon Walled City



**Kowloon
Walled City**

**Kowloon
Street**

**Lung Tsun
Stone
Bridge is
around
there**





Granite Deck of the LTSB



Bin Mo Bridge, Kam Tin



Landing Platform of the LTSB



Landing Platform of a Sheung Wan Pier

ARCHAEOLOGICAL EXCAVATION 考古發掘

Time	Event
Aug 2009	Kai Tak Development Engineering Study cum Design and Construction of Advance Works – Investigation, Design and Construction, Further Archaeological Excavation Report , published by CEDD
Dec 2009	EIA Report for the Preservation of Lung Tsun Stone Bridge, published by Ove Arup & Partners Hong Kong Ltd
Nov 2009	Evaluation of the impacts of proposed work against Conservation Management Plan
Nov 2009	Conservation Management Plan for the Site of Lung Tsun Stone Bridge, published by LCSD & AMO
Jun 2010 , Apr 2011	A Two-stage public engagement exercise was carried out by CEDD to foster public awareness and consensus on the preservation approach of the Bridge remnants
Dec 2012	A Research on Lung Tsun Stone Bridge and its surrounding area , by Chung Po Yin & Ko Tim Keung
Aug 2013	Interpretation Principles & Guidelines for the LTSB Preservation Corridor, published by CEDD, LCSD, AMO & Substance LAB
Sep 2013	Full Excavation for Defining the Preservation Approach of Lung Tsun Stone Bridge Remnants, published by CEDD/ AECOM
Jan 2014	Result for open design idea competition for this project was launched by CEDD

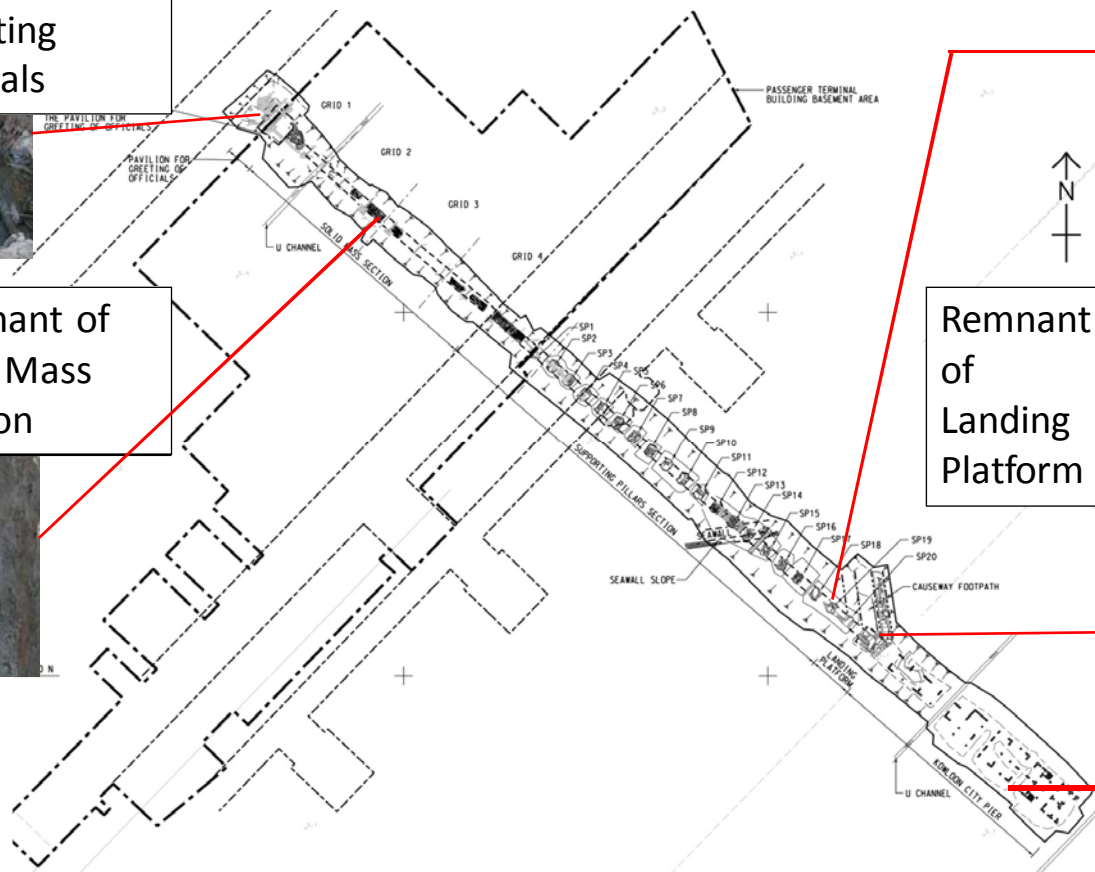
Archaeological Findings



Remnant of Pavilion for Greeting Officials



Remnant of Solid Mass Section



Remnant of Supporting Pillar Section



Remnant of Landing Platform



Kowloon City Pier



- 1 Background 背景
- 2 Project Scope 項目範圍
- 3 Site Context 工地情況
- 4 Design Concept 設計理念
- 5 Design Proposal 設計建議

SCOPE OF WORK 工程範圍

1. Preservation of the Bridge Remnants 保育龍津石橋遺跡

- Archaeological works to display remnants
進行考古工作以展現遺跡
- Conservation treatment 保育處理
- Interpretation facilities incl. a display area
解讀設施包括展現區

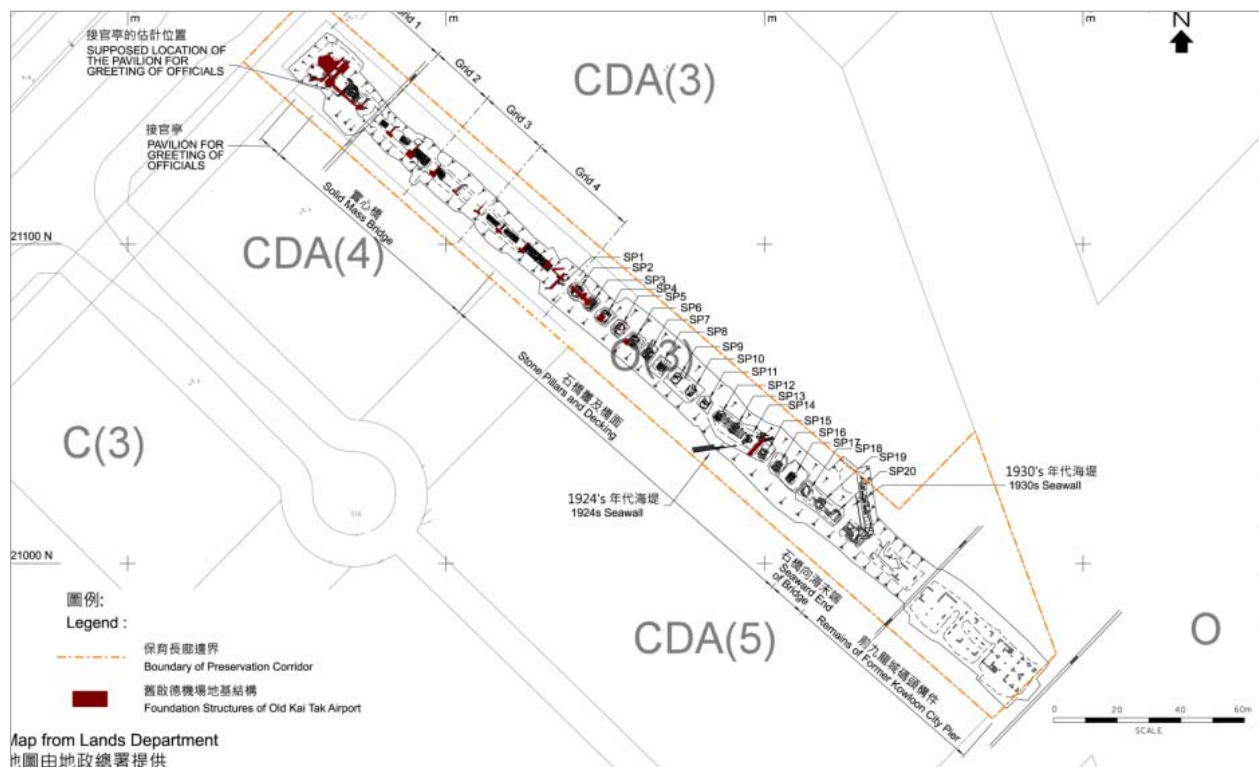


2. Open Space at Preservation Corridor

保育長廊的休憩空間

- Continuous pedestrian walkway 連續的行人道
- Easy access from adjoining CDA sites and proposed USS
連接周邊的綜合發展區及地下步行街
- Ancillary facilities 輔助設施:
 - Depot (fenced off/ L&UL) 倉庫
 - Babycare room 育嬰室
 - First-aid room 急救室
 - General store room 貯物室
 - Toilets 洗手間

Landscape areas with benches, shelters, pavilions and flowering trees
設有長椅，蔭棚，涼亭和種植開花植物的園景花園



- 1 Background 背景
- 2 Project Scope 項目範圍
- 3 Site Context 工地情況
- 4 Design Concept 設計理念
- 5 Design Proposal 設計建議

OBJECTIVE 目的

To provide landscaped open space for the heritage conservation and public appreciation of the remnants of Lung Tsun Stone Bridge (the Bridge) at Kai Tak.

提供園景休憩空間,以保育龍津石橋遺跡供市民欣賞。



SITE CONTEXT 工地情況

Site A 工地A

- Area: approx. 12,200sqm
面積=約12,200平方米
- approx. 30m (W), 314m (L)
約30米(寬), 314米(長)

Site B 工地B

- Area: approx. 2300sqm
面積=約2,300平方米



Kai Tak Cruise Terminal
啟德郵輪碼頭

Kowloon Bay
九龍灣

Tak Long Estate
德朗村

Kai Tak Station Square
啟德車站廣場

Site A 工地A

Lung Tsun Stone Bridge
Subway
龍津石橋隧道

Prince Edward Road East
太子道東

Wong Tai Sin
黃大仙

Shek Ku Long
Road Playground
石鼓壟道遊樂場

Site B 工地B

Kowloon Walled City Park
九龍城寨公園

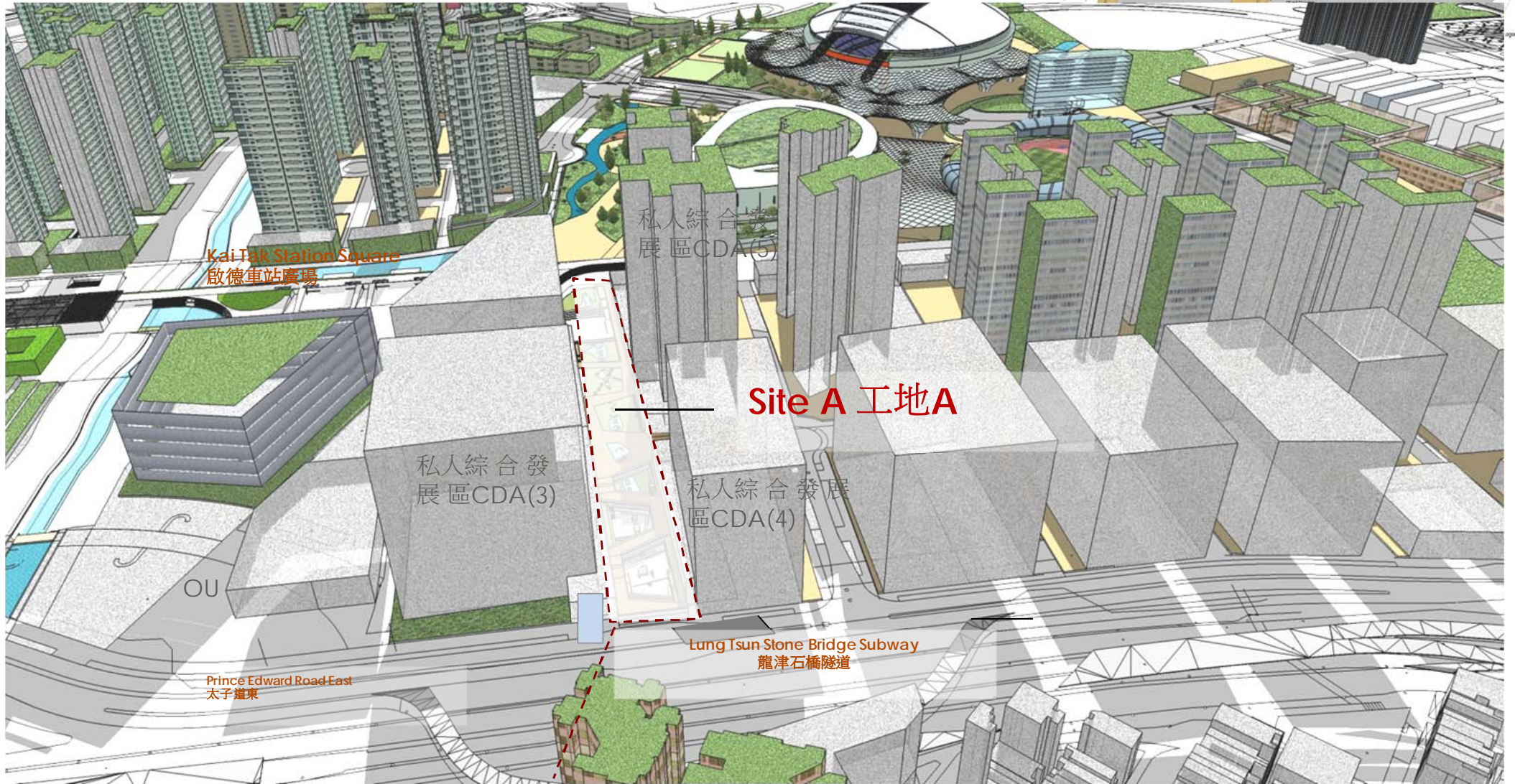
Kowloon City
九龍城



建築署

Architectural Services Department 11

SITE CONTEXT 工地情況



View of Northwest Entrance
西北入口效果圖

SITE CONTEXT 工地情況

Comparison with Other Heritage trails in Hong Kong



Lung Yeuk Tau Heritage Trail
Approx. 2.6 km

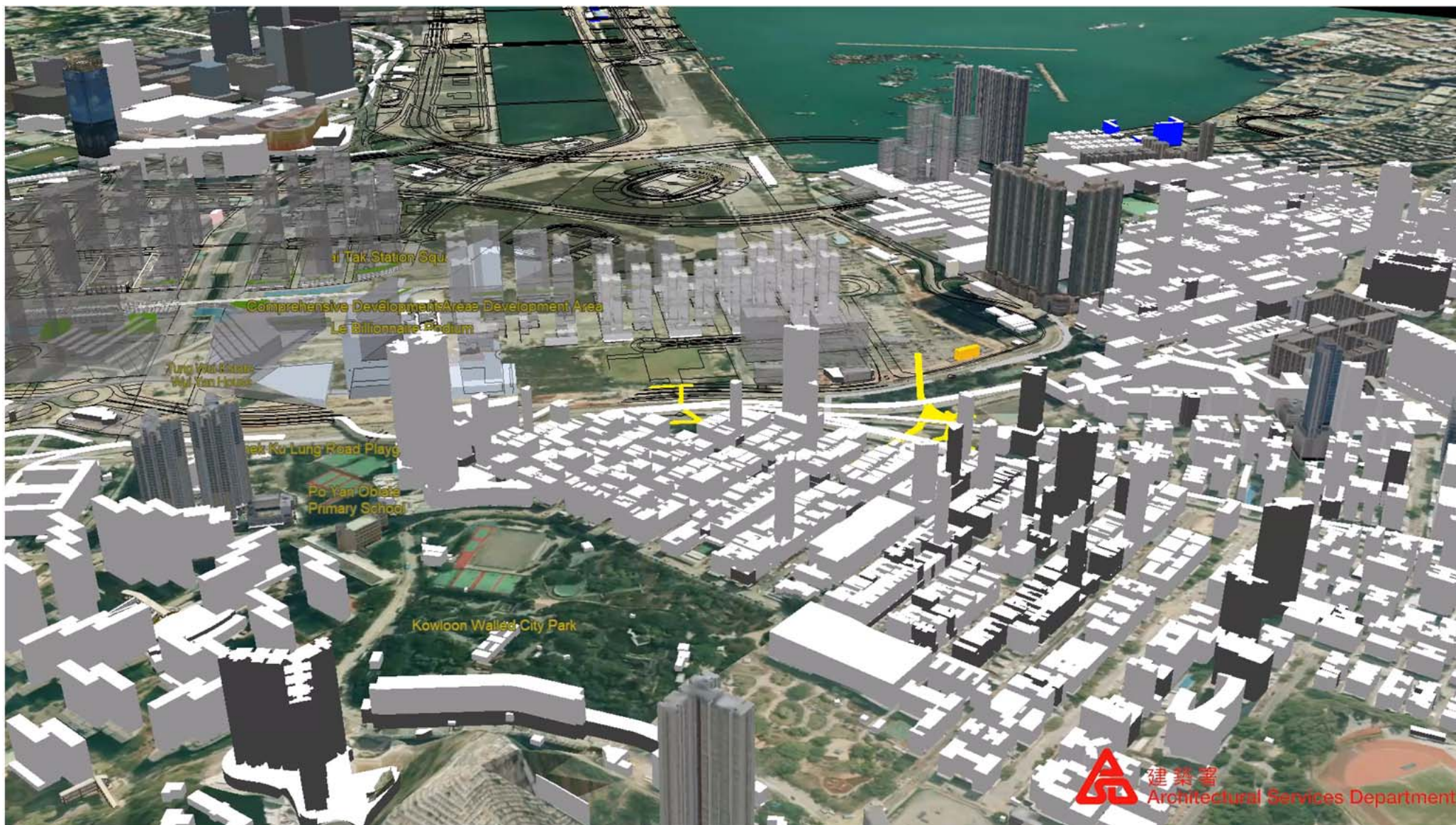


Pang Shan Heritage Trail
Approx. 1.6 km

Lung Tsun Stone Bridge Heritage Corridor
Approx. 0.3 km



From Kowloon Walled City to Lung
Tsun Stone Bridge Heritage Corridor
Approx. 1 km

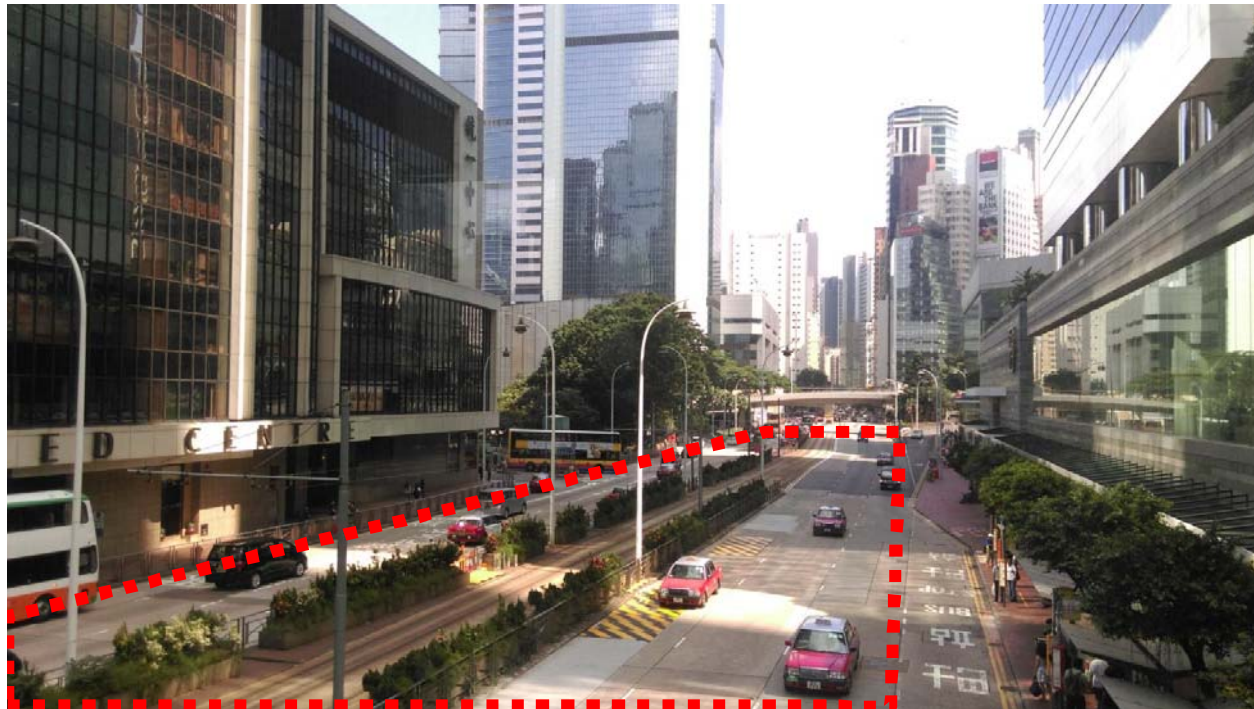


SITE CONTEXT 工地情況

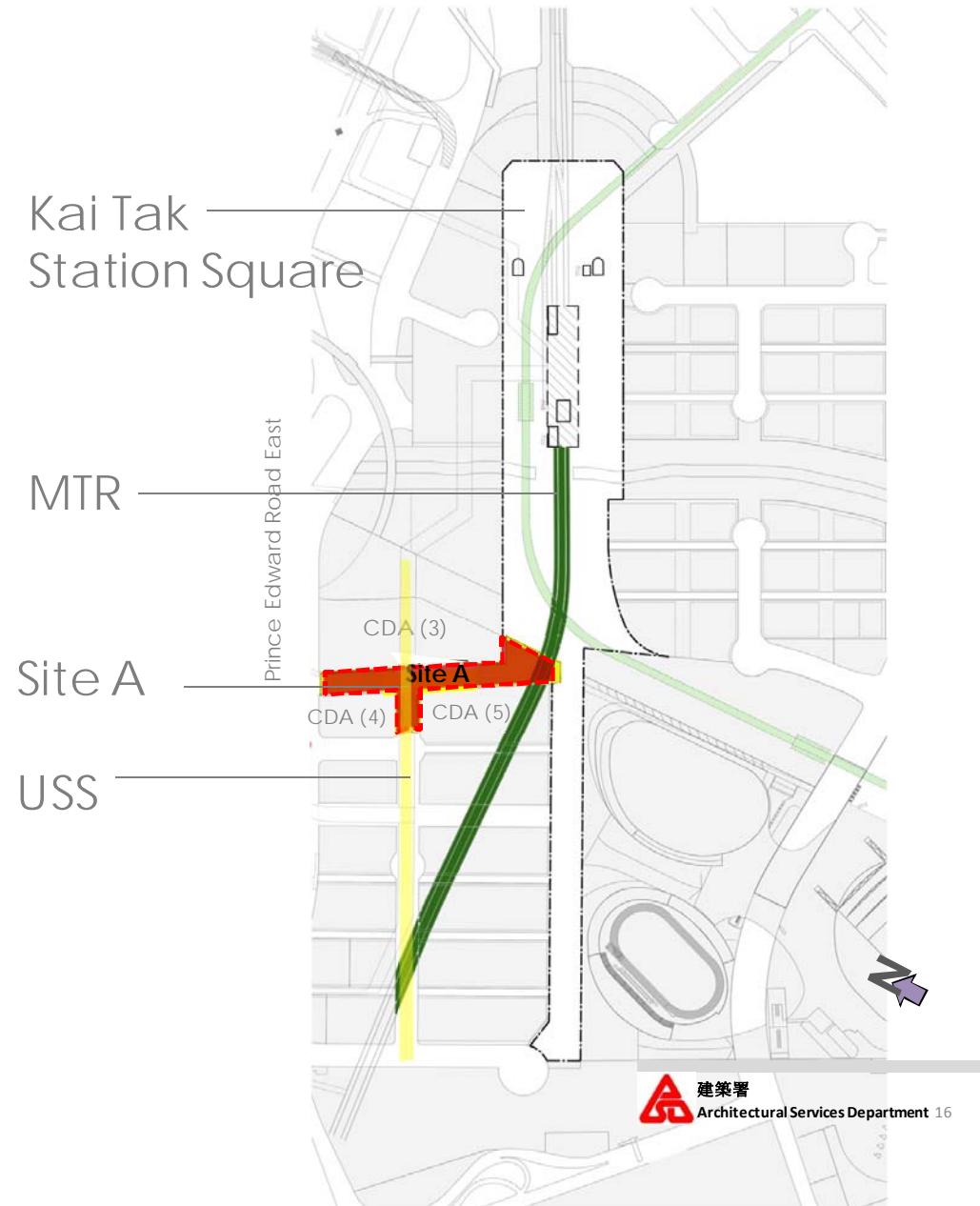
Lung Tsun Stone Bridge Heritage Corridor
Approx. 0.3 km



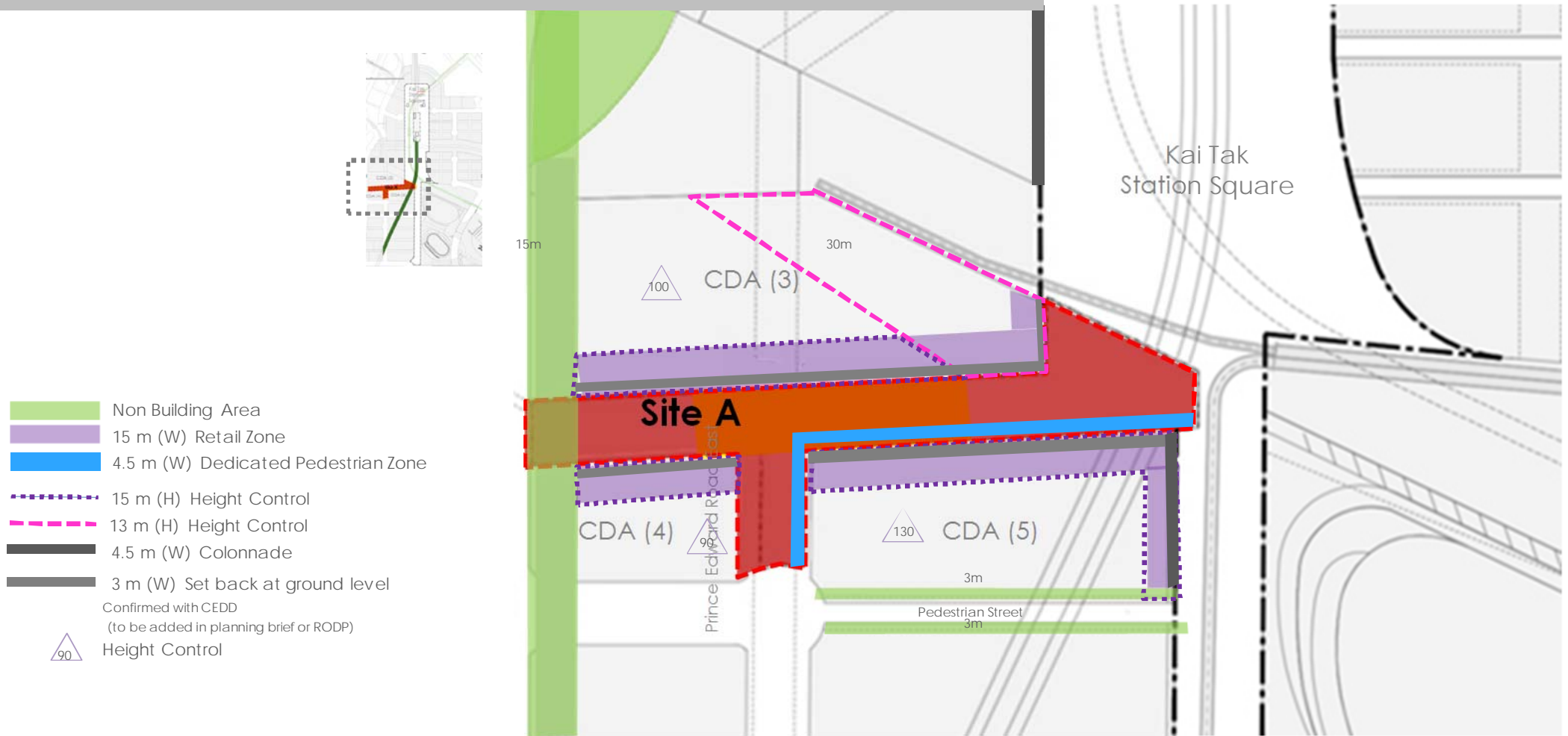
Approximate 30 x 300 metres
約30米（寬）X 300米（長）



“Conditions of Site” + “Site Constraints” + “Design Requirements”



“Conditions of Site” + “Site Constraints” + “Design Requirements”

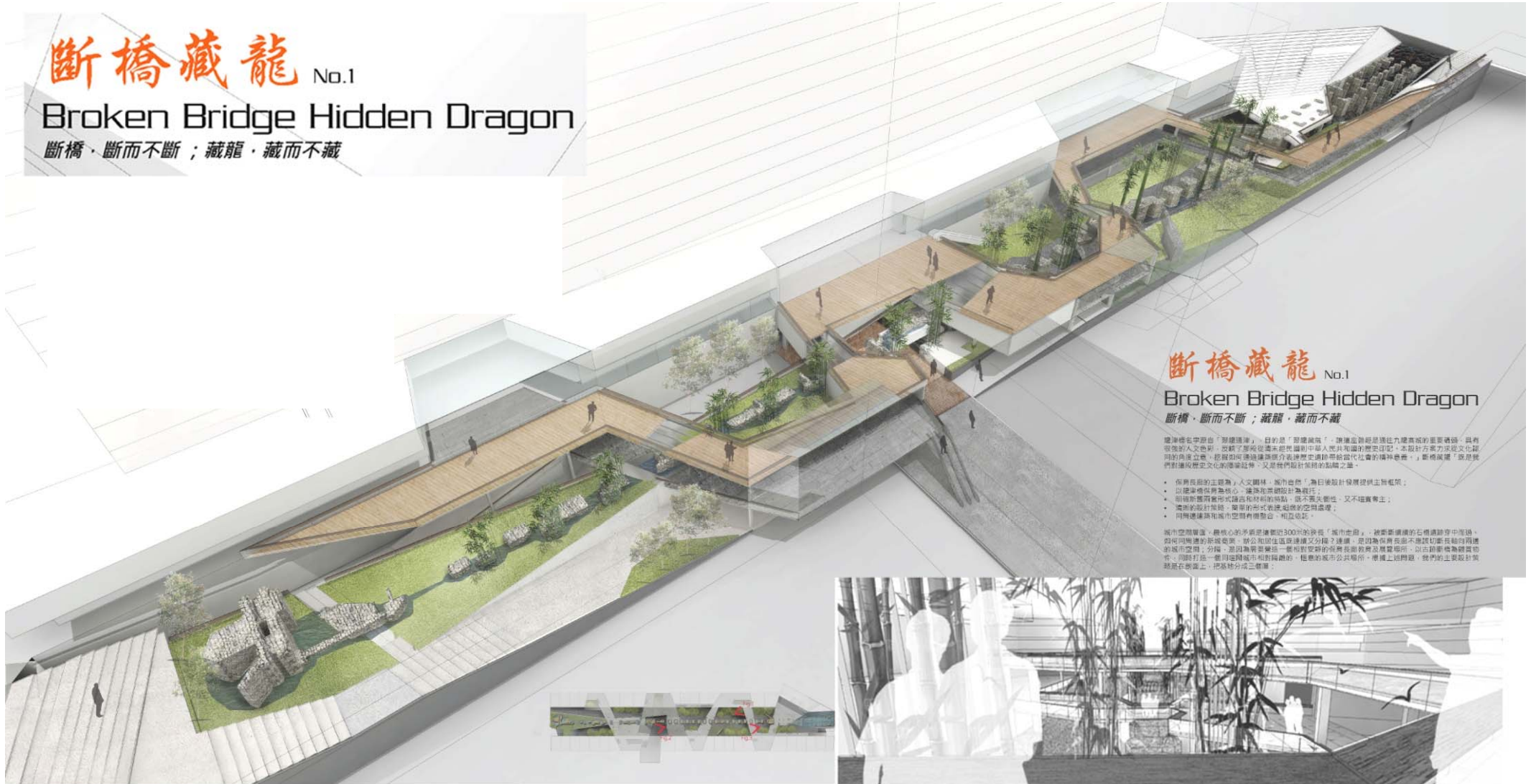


- 1 Background 背景
- 2 Project Scope 項目範圍
- 3 Site Context 工地情況
- 4 Design Concept 設計理念
- 5 Design Proposal 設計建議

斷橋藏龍 No.1

Broken Bridge Hidden Dragon

斷橋·斷而不斷；藏龍·藏而不藏



斷橋藏龍 No.1

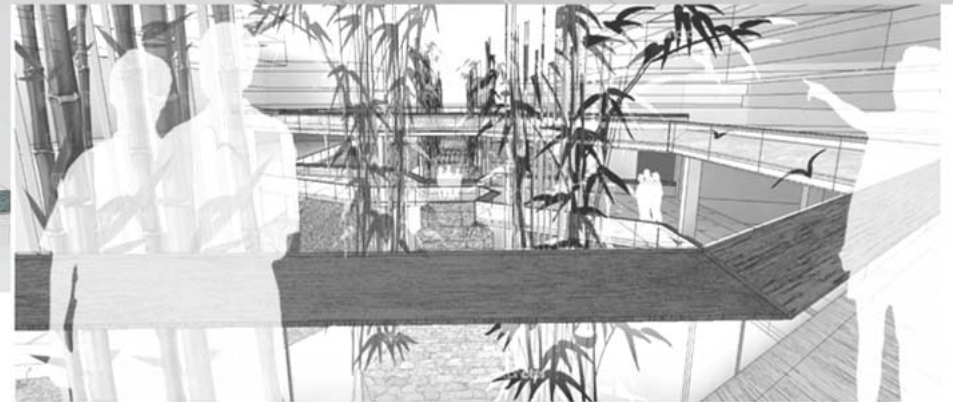
Broken Bridge Hidden Dragon

斷橋·斷而不斷；藏龍·藏而不藏

建築師名字源自「斷橋藏龍」，目的是「斷橋藏龍」，讓這座建築是通往九龍舊城的重要橋樑，具有強烈的文化色彩，改寫了傳統建築未絕與中國人公共空間的歷史印記。本設計方案力透文化歸還的勇氣立地，將歷史與現代的建築語言融於當代社會的傳統意義。斷橋藏龍「斷」是我們對傳統歷史文化的重新詮釋，又是我們設計創新的點燃之筆。

- 保留長廊的主題為：人文關懷、城市自由，為日後設計發展提供主軸框架；
- 以歷史傳統為核心，讓建築與設計為一體；
- 延續新舊建築形式語言和材料特點，既不棄舊，又不喧賓奪主；
- 濃厚的設計策略，簡單的形式表達複雜的空間處理；
- 同時建議與城市空間有機融合、相互吸引。

城市空間層面，將核心的新建築都建300米的狹窄「城市走廊」，被斷橋連貫的石橋連貫穿中而過，如何回應這座新建築、辦公和居住區連續又分離？建議，是認為保留長廊不應讓切斷長廊而兩邊的城市空間，分離，並認為保留長廊一貫和斷橋的保留長廊教育及展覽場所，以活動參與體驗城市，同時打出一個與這座城市相對稱的，概念給城市公共場所，根據上述問題，我們的主要設計策略是在斷橋上，把這地分成三個層：



- Underground 3D space to allow more space at ground floor.
向下發展，塑造一個地平面下的立體城市；
- 橫向跨越，長向穿越，把不同屬性的城市活動分開的同時，由園林院落穿插在一起；
Longitudinal Axis & Lateral Axis form sophisticated spatial articulation.

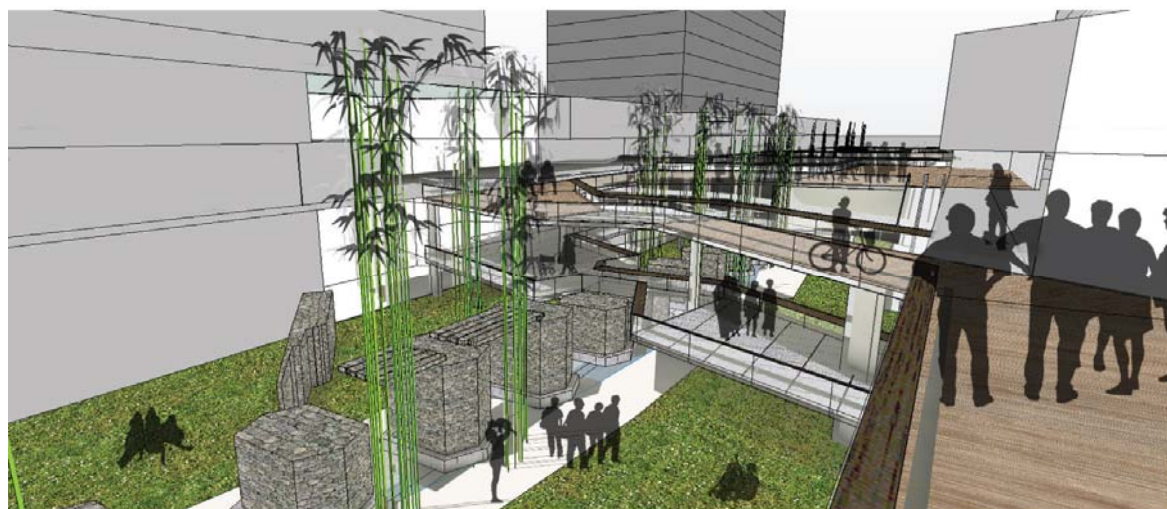
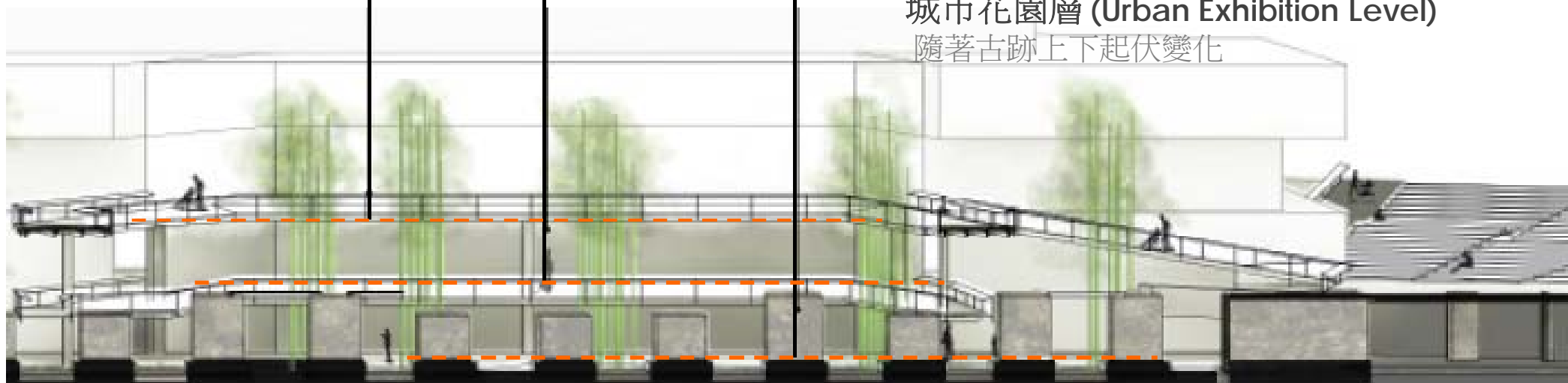
Design Strategy

城市地面層 (Urban Ground Level) : 步行

展示保育層 (Preservation Exhibition Level): 平石橋表面

城市花園層 (Urban Exhibition Level)

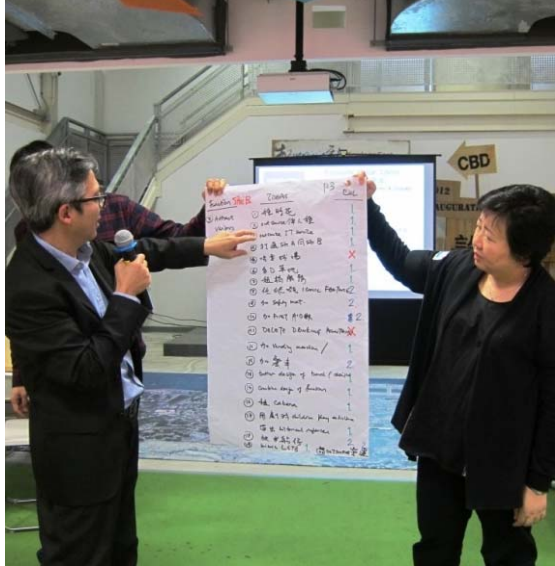
隨著古跡上下起伏變化



俯瞰室外空间和城市园林 Overlook the outdoor exhibition and the urban garden



看穿室內展覽 Look through the indoor exhibition space



Attended by stakeholders, 參與者包括: 潘國華, 丁志威, 梁婉婷, Ms Margaret Brooks

1. 視乎文物影響評估報及建築費用, 應儘量展示兩組古橋遺蹟,
2. 就工地B至九龍寨城公園道路, 以維持現狀為設計基礎,
3. 從保育角度出發, 不鼓勵公眾人士接觸古橋遺蹟.

討論內容涵蓋:

1. 改善行人暢達網絡,
2. 展示方法,
3. 說故事,
4. 優質的休憩設施,
5. 締造保育文化,
6. 吸引人流及營造特式公共空間

Value Management Workshop held on 9 March 2016,
三月舉行價值管理工作坊

District Council Consultation on Jan , Mar 2017

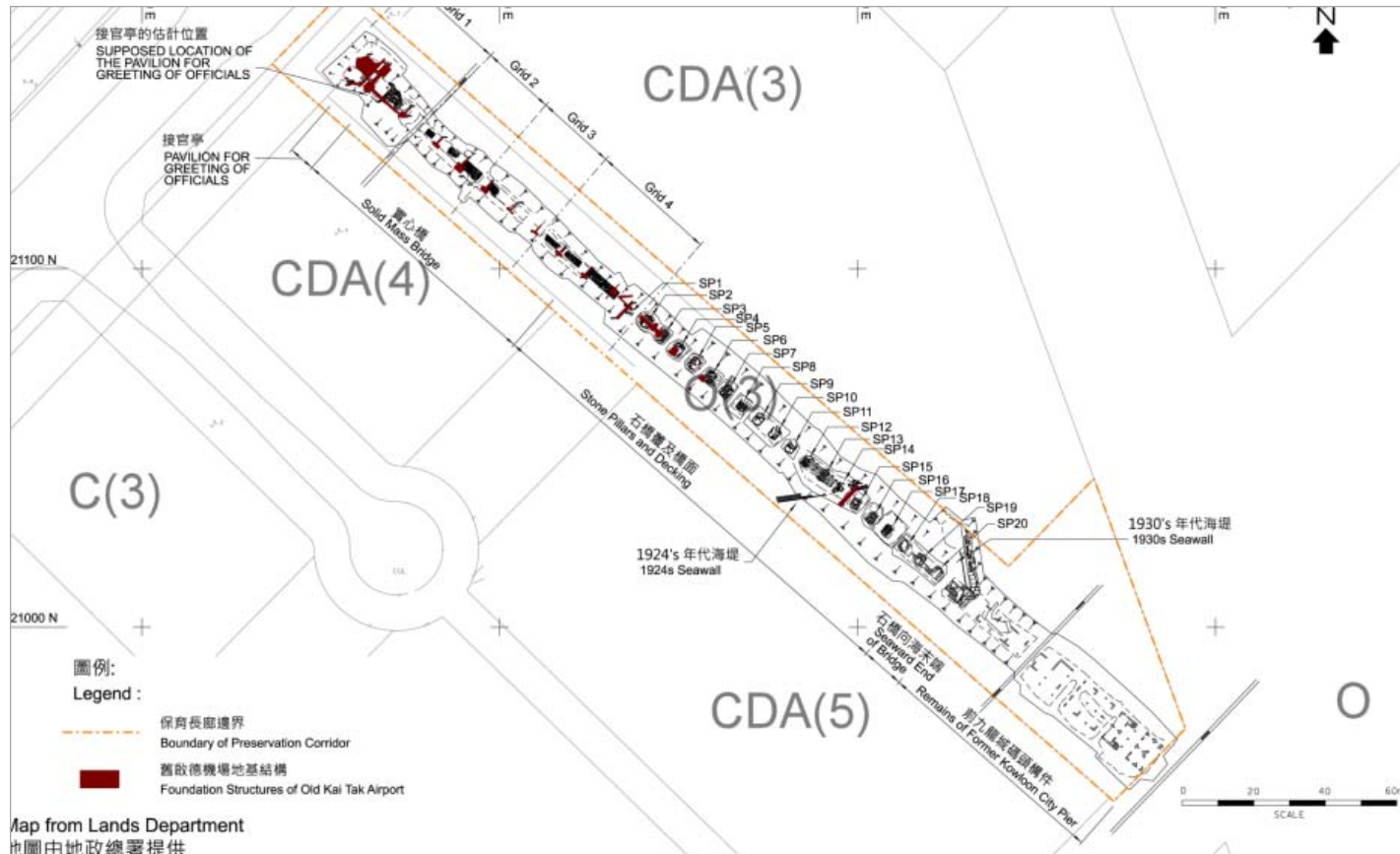
Conservation Principles

Preserve *in-situ*

Key CDEs: remnants of the LTSB,
1924 seawall and 1933 causeway

Conservation Policies and Guidelines

- Conserve and Enhance Heritage Value
- Retain Authenticity & Integrity
- Minimum Intervention
- Maximum Reversibility
- Integrating Old and New



An Urban Spaces for Variety of Activities



Park Sitting



Photo taking



Sitting in the Plaza



Exhibiting



Connecting

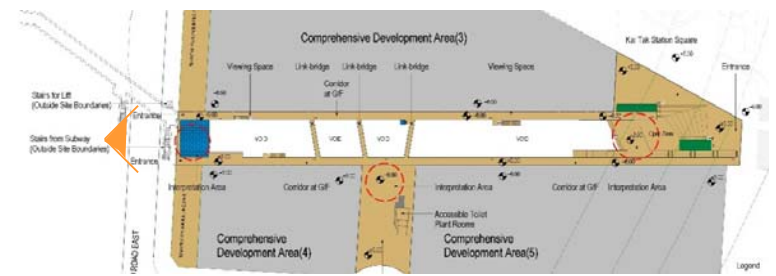


Educational Guided Tour

- 1 Background 背景
- 2 Project Scope 項目範圍
- 3 Site Context 工地情況
- 4 Design Concept 設計理念
- 5 Design Proposal 設計建議



Design Proposal



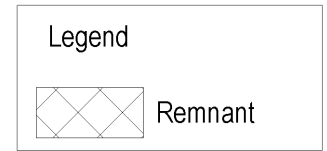
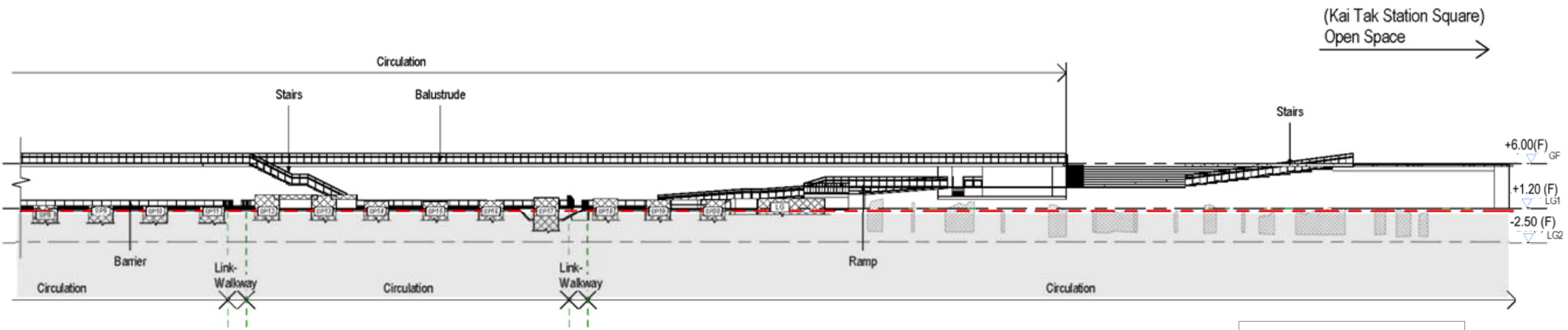
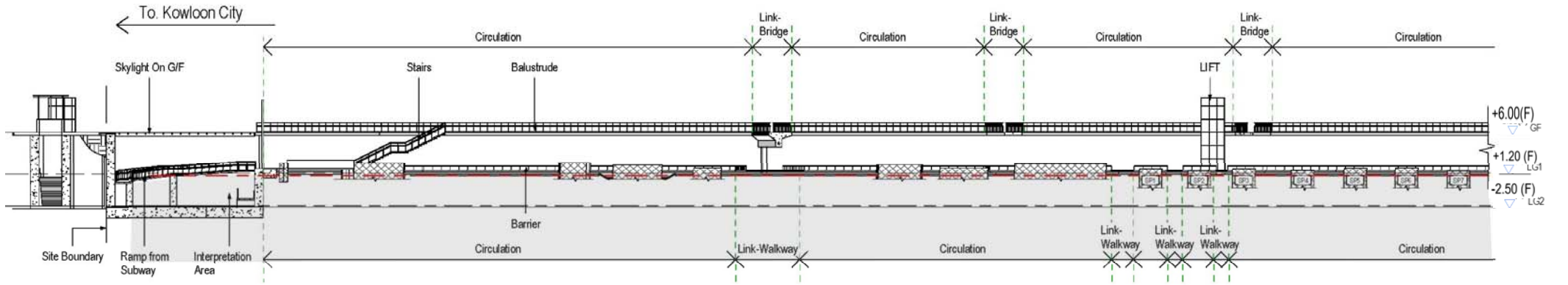
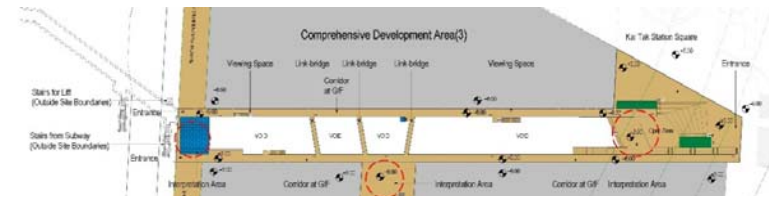
Preliminary design subject to further study
初步設計，待進一步研究



View from GF Prince Edward Road East entrance

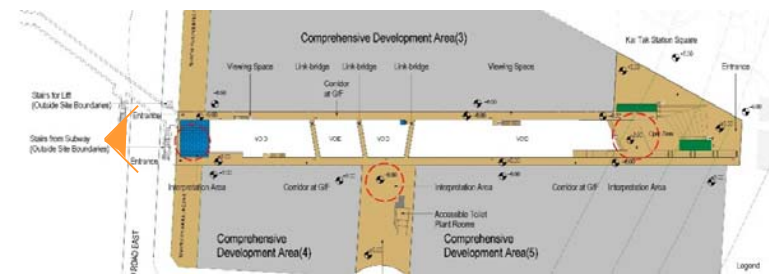
Design Proposal

Remnants Display



Design Proposal

Provide multiple viewpoints for Remnants



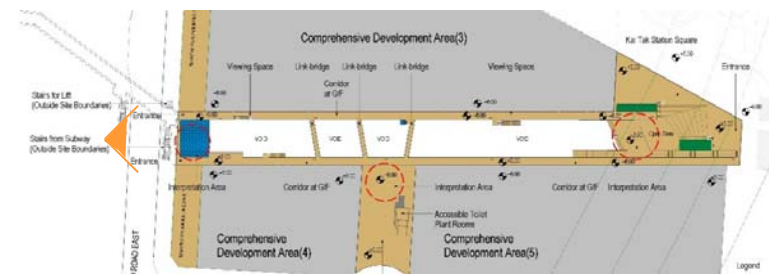
Preliminary design subject to further study
初步設計，待進一步研究



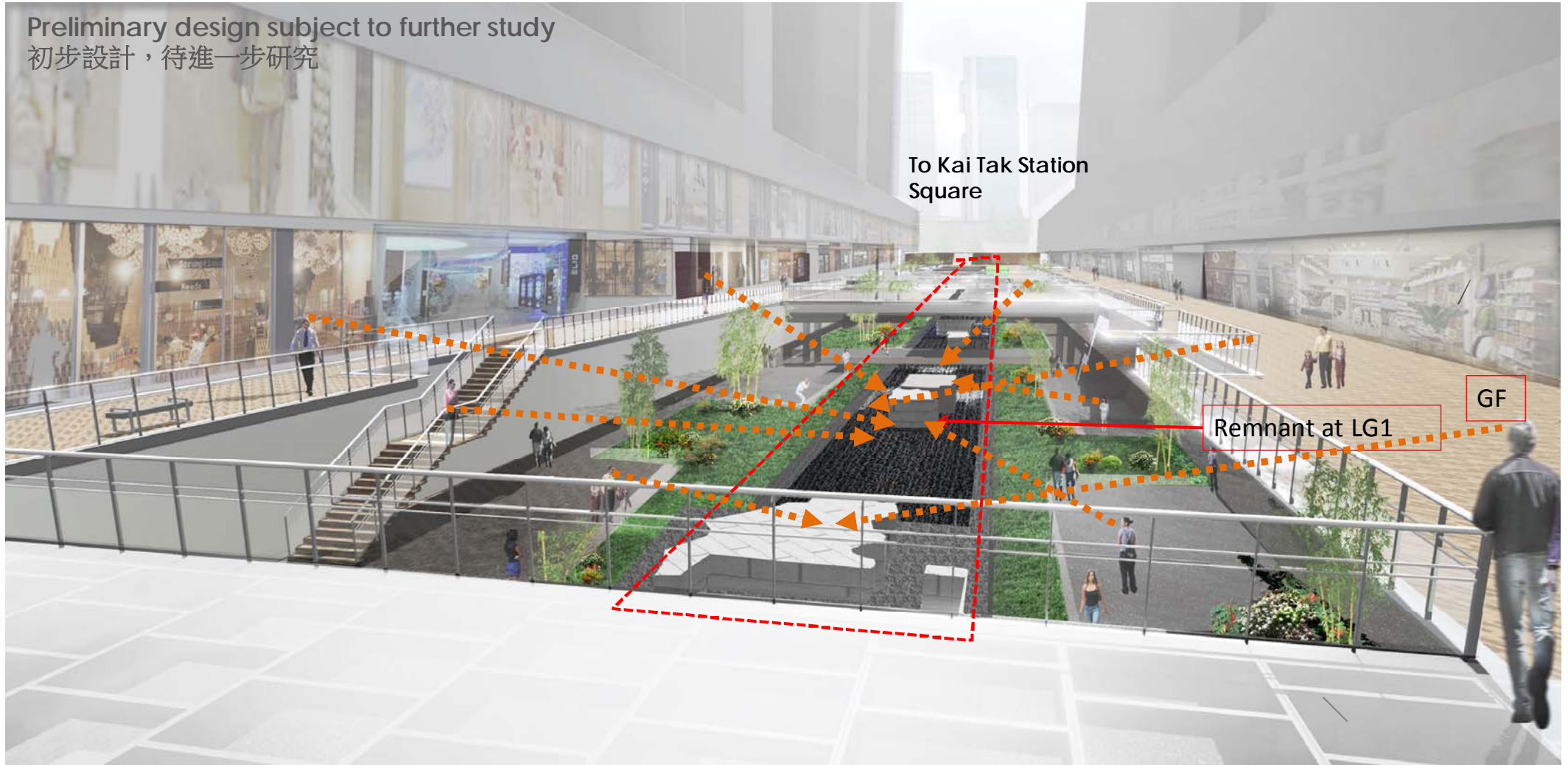
View from GF Prince Edward Road East entrance

Design Proposal

Provide multiple viewpoints for Remnants



Preliminary design subject to further study
初步設計，待進一步研究



View from GF Prince Edward Road East entrance



St. Michael's Platz, Vienna
奧大利維也納聖米歇爾廣場



St. Michael's Platz, Vienna
奧大利維也納聖米歇爾廣場

<https://images.kurier.at/46-3814002.jpg/620x930nocrop/57.787.520>

reference image 參考圖像

<http://www.detail.de/inspiration/michaelerplatz-in-wien-107952.html>

reference image 參考圖像

Reference Project 參考項目：



Kowloon Wall City Remnants Display
九龍寨城

reference image 參考圖像

reference image 參考圖像

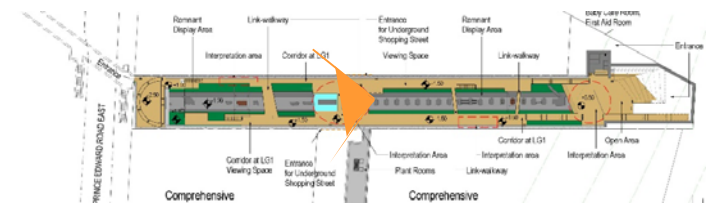


St. Michael's Platz, Vienna
奧大利維也納聖米歇爾廣場

www.alamy.com - F56P94

Design Proposal

Provide multiple viewpoints for Remnants



Preliminary design subject to further study
初步設計，待進一步研究

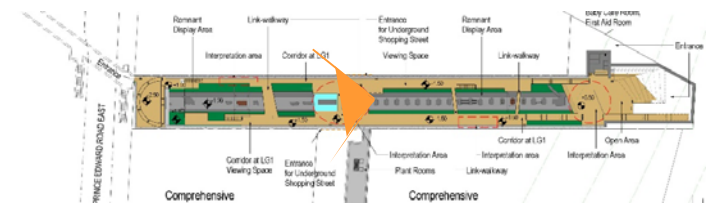


View from LG1 intersection space

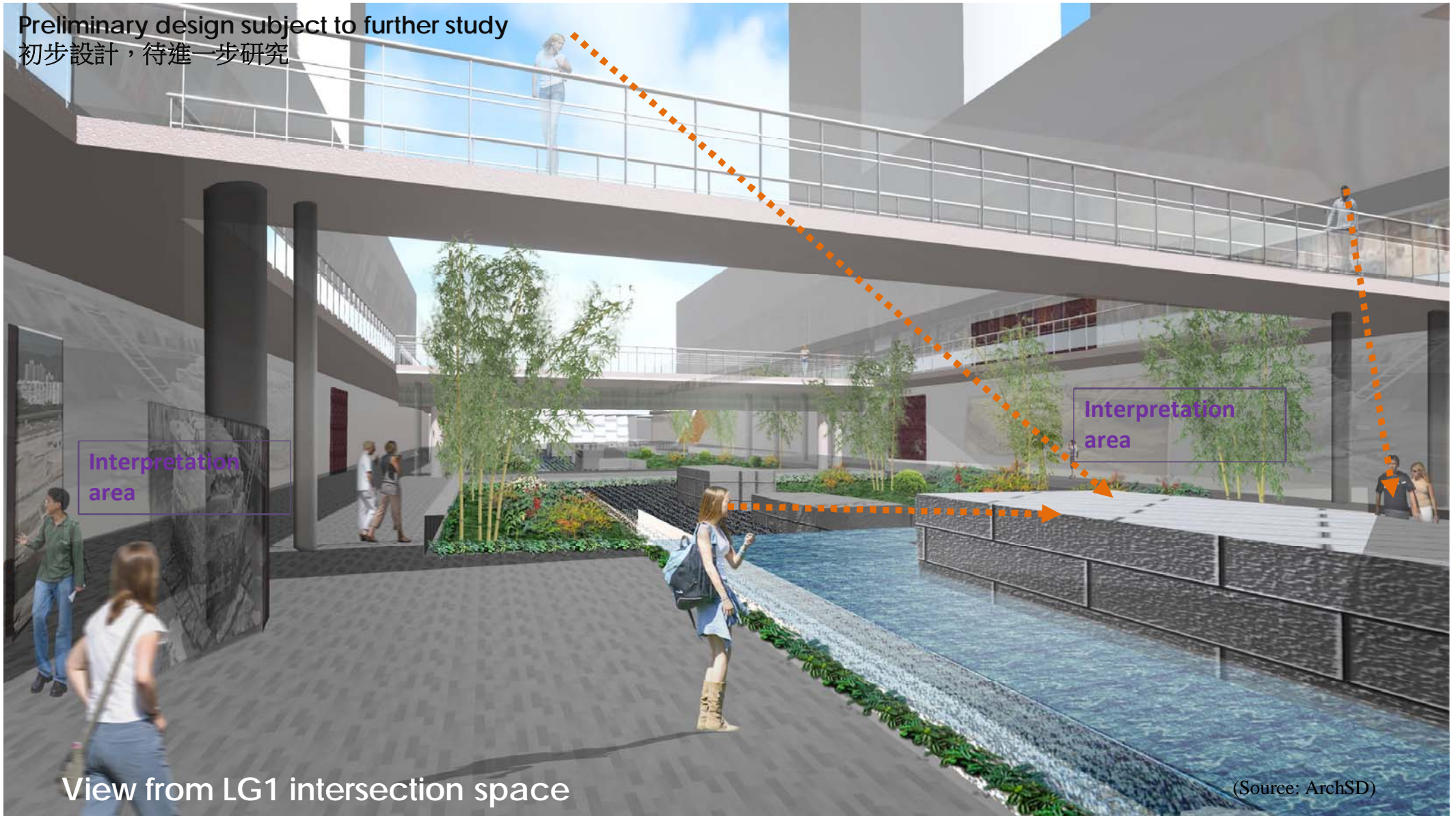
(Source: ArchSD)

Design Proposal

Provide multiple viewpoints for Remnants



Preliminary design subject to further study
初步設計，待進一步研究



View from LG1 intersection space

(Source: ArchSD)

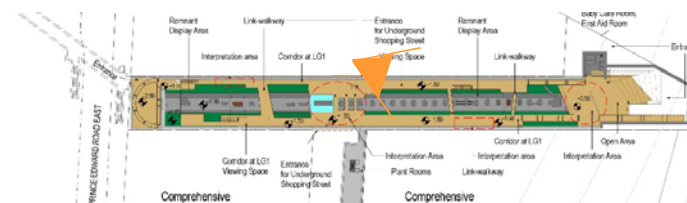


Cheong gye cheon, Seoul
韓國首爾清溪川

reference image 參考圖像

Design Proposal

Provide multiple viewpoints for Remnants



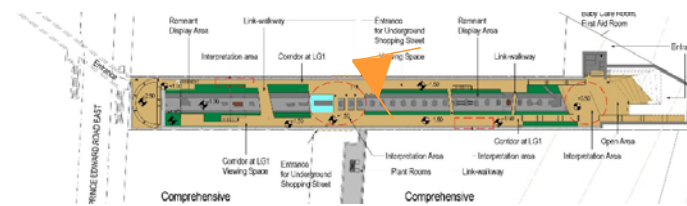
Preliminary design subject to further study
初步設計，待進一步研究



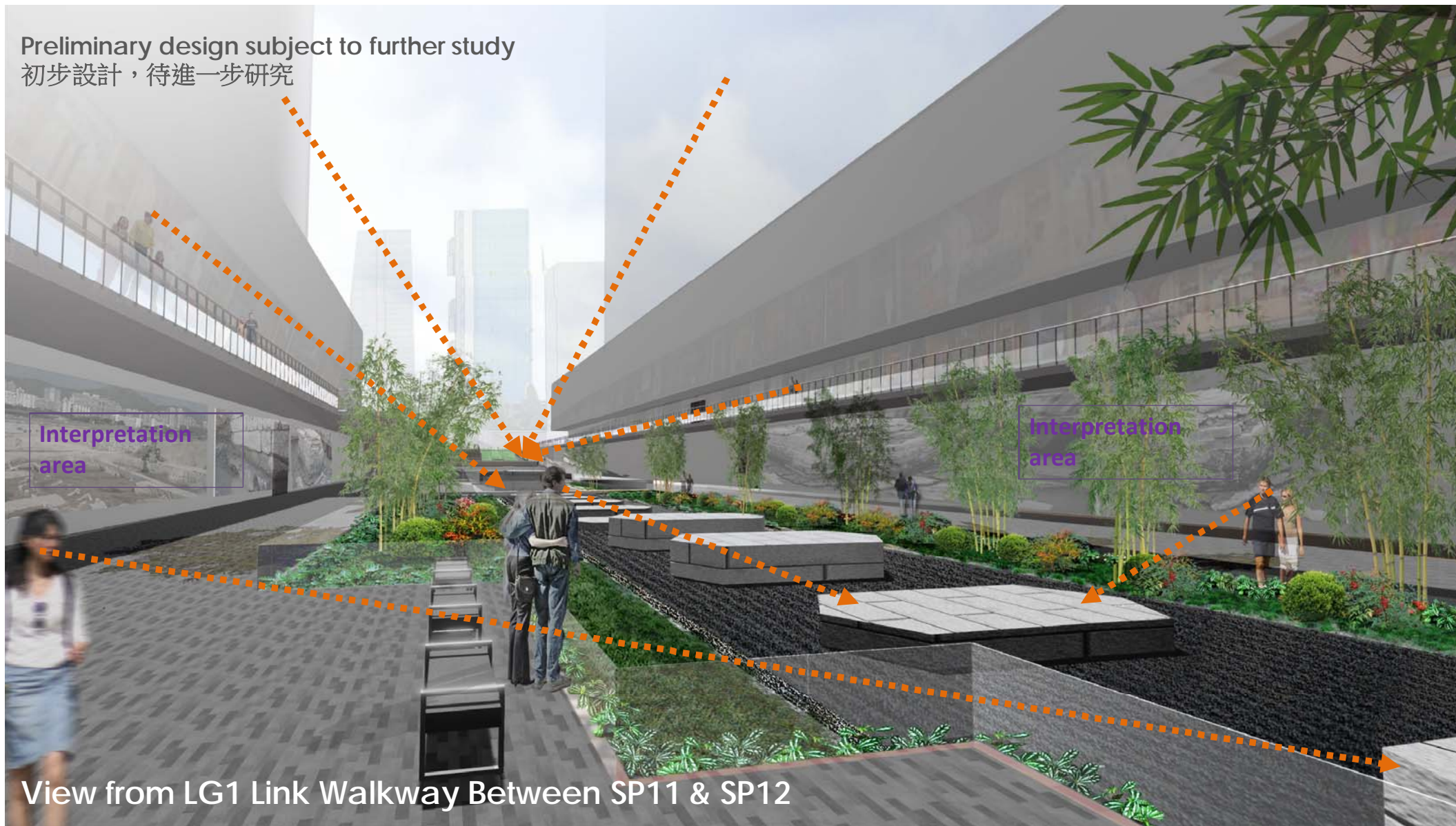
View from LG1 Link Walkway Between SP11 & SP12

Design Proposal

Provide multiple viewpoints for Remnants



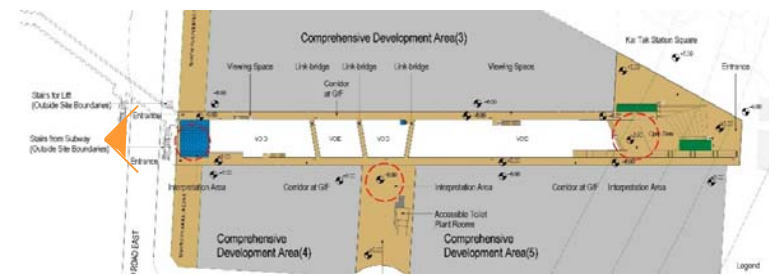
Preliminary design subject to further study
初步設計，待進一步研究



View from LG1 Link Walkway Between SP11 & SP12

Design Proposal

Connecting into Kai Tak Development and old urban fabric



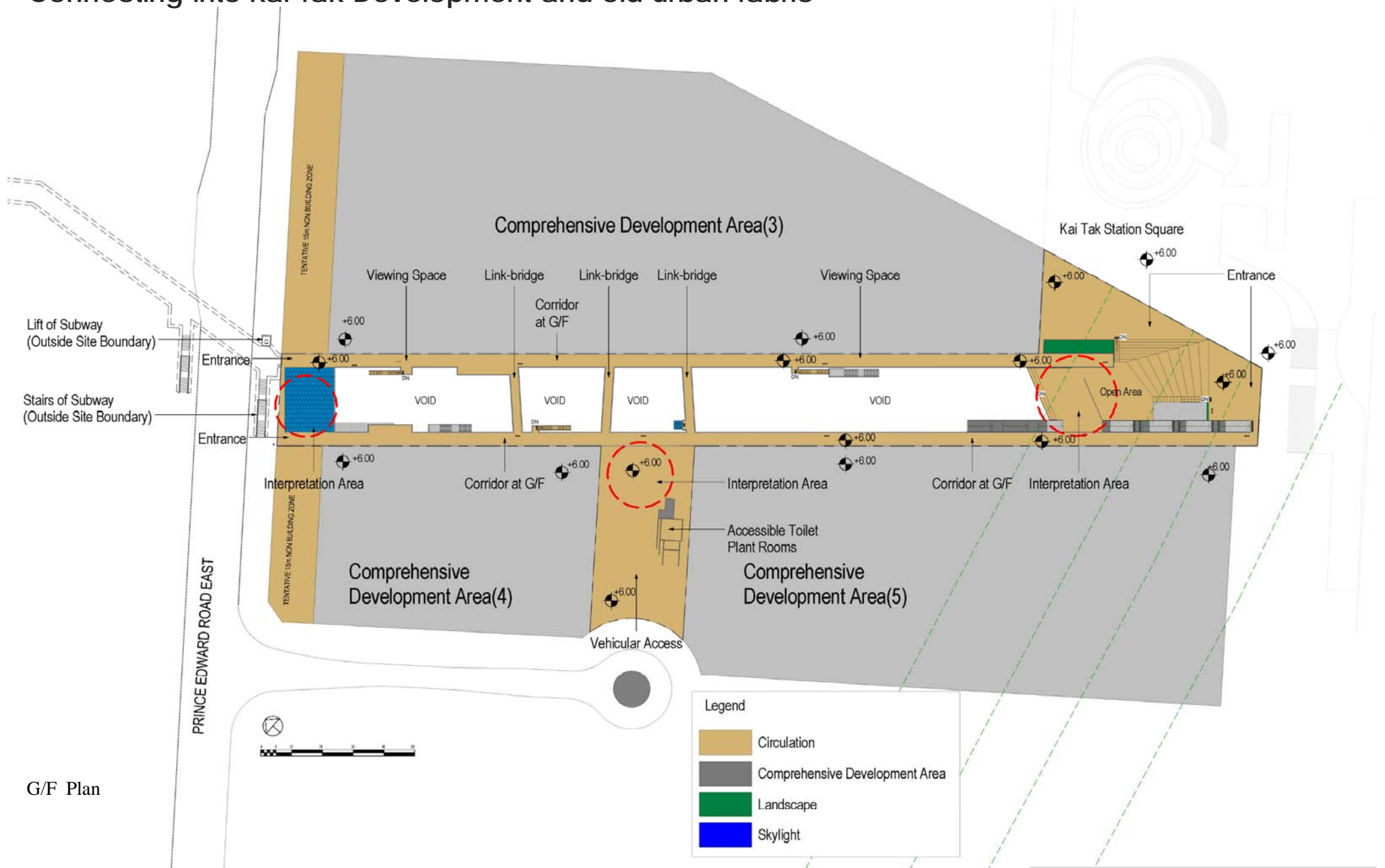
Preliminary design subject to further study
初步設計，待進一步研究



View from GF Prince Edward Road East entrance

Design Proposal – G/F Plan

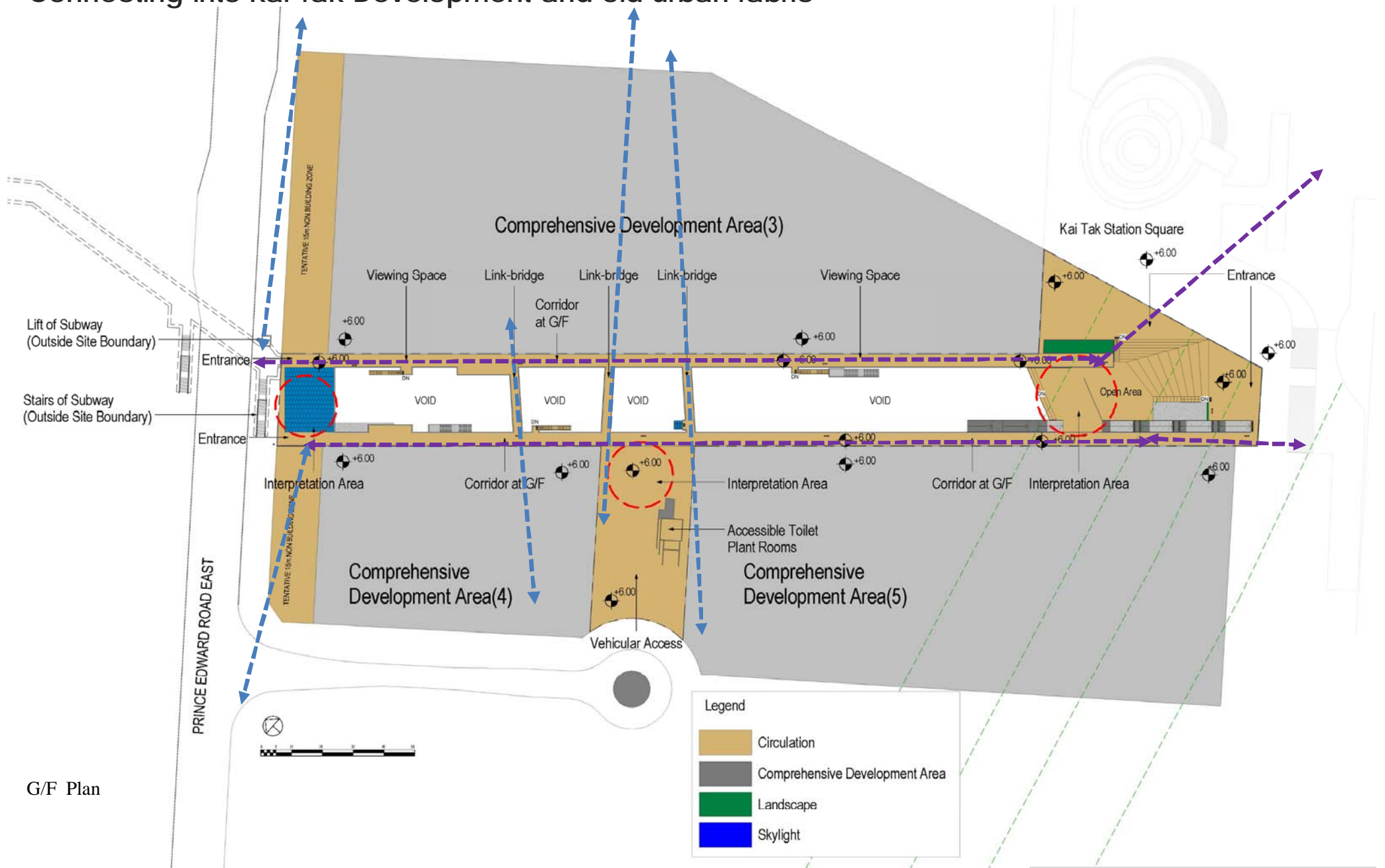
Connecting into Kai Tak Development and old urban fabric



G/F Plan

Design Proposal – G/F Plan

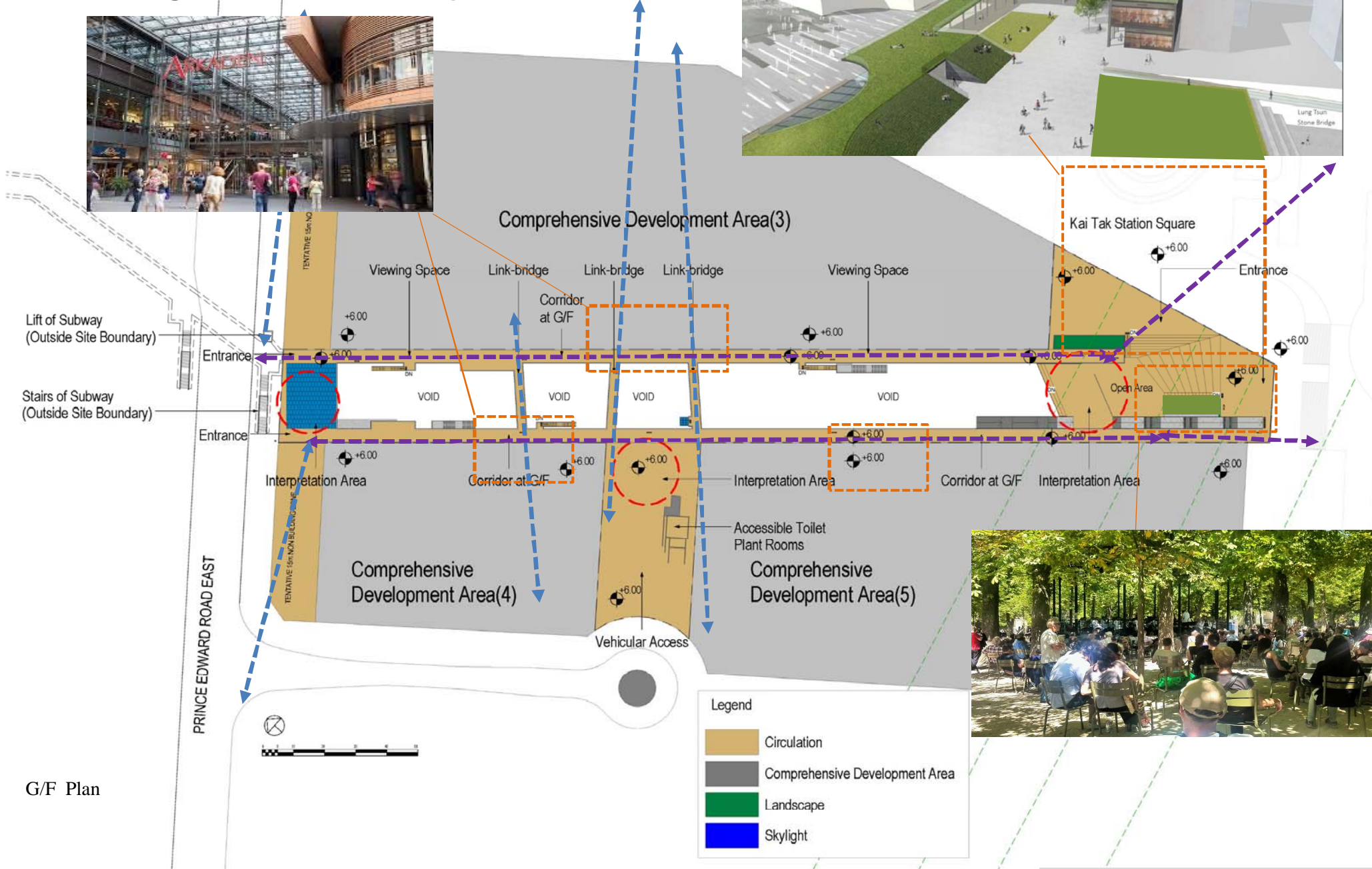
Connecting into Kai Tak Development and old urban fabric



G/F Plan

Design Proposal – G/F Plan

Connecting into Kai Tak Development and old urban

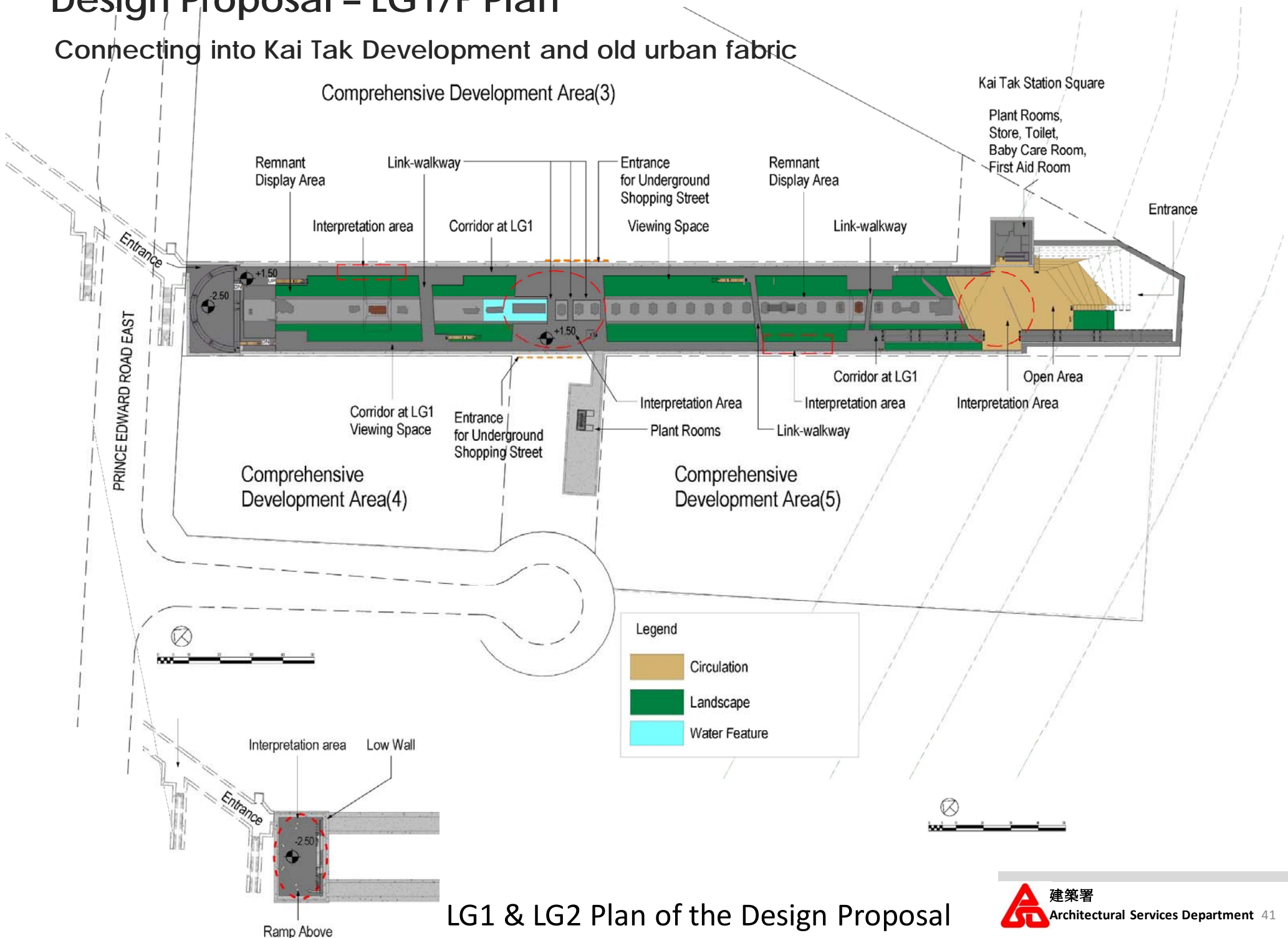


G/F Plan



Design Proposal – LG1/F Plan

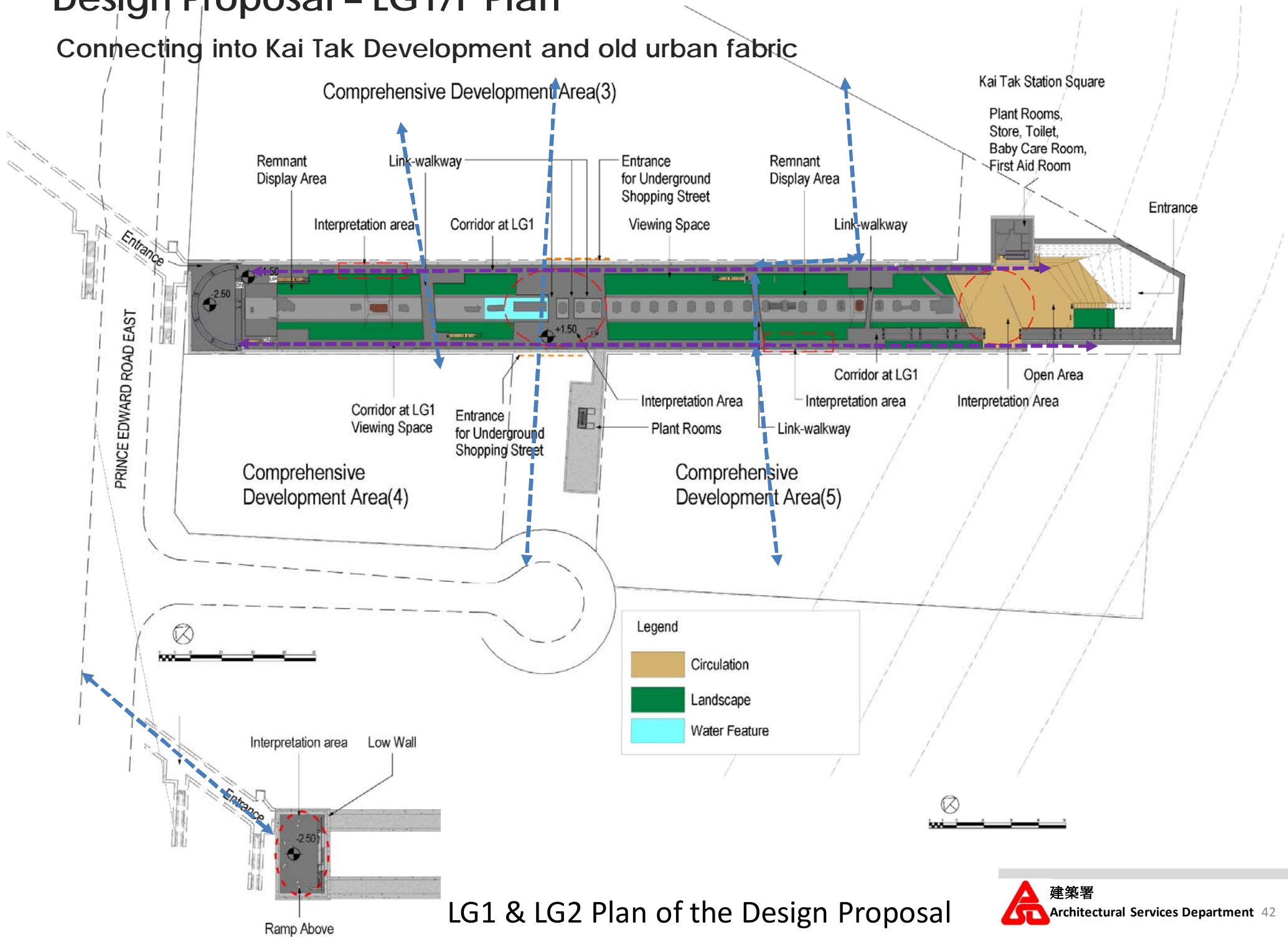
Connecting into Kai Tak Development and old urban fabric



LG1 & LG2 Plan of the Design Proposal

Design Proposal – LG1/F Plan

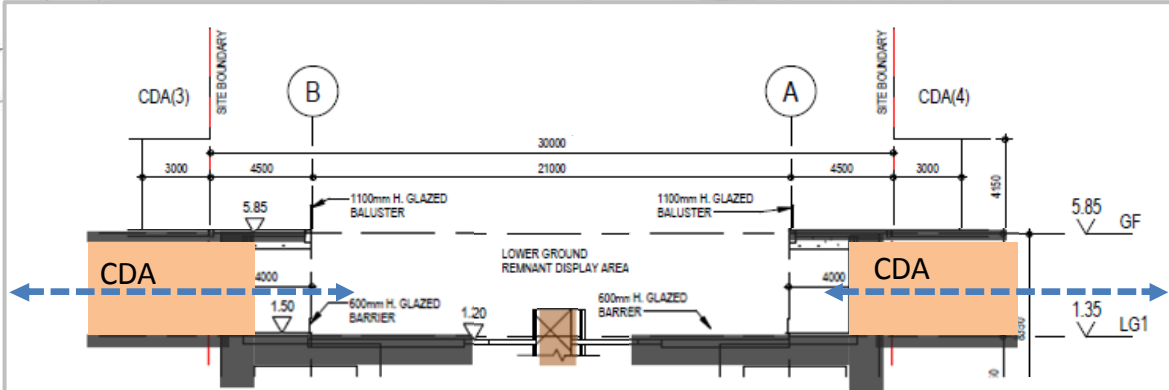
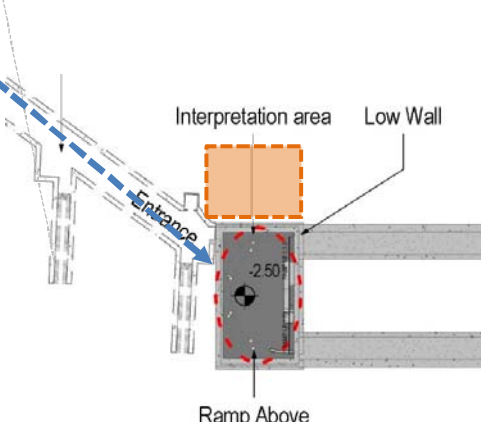
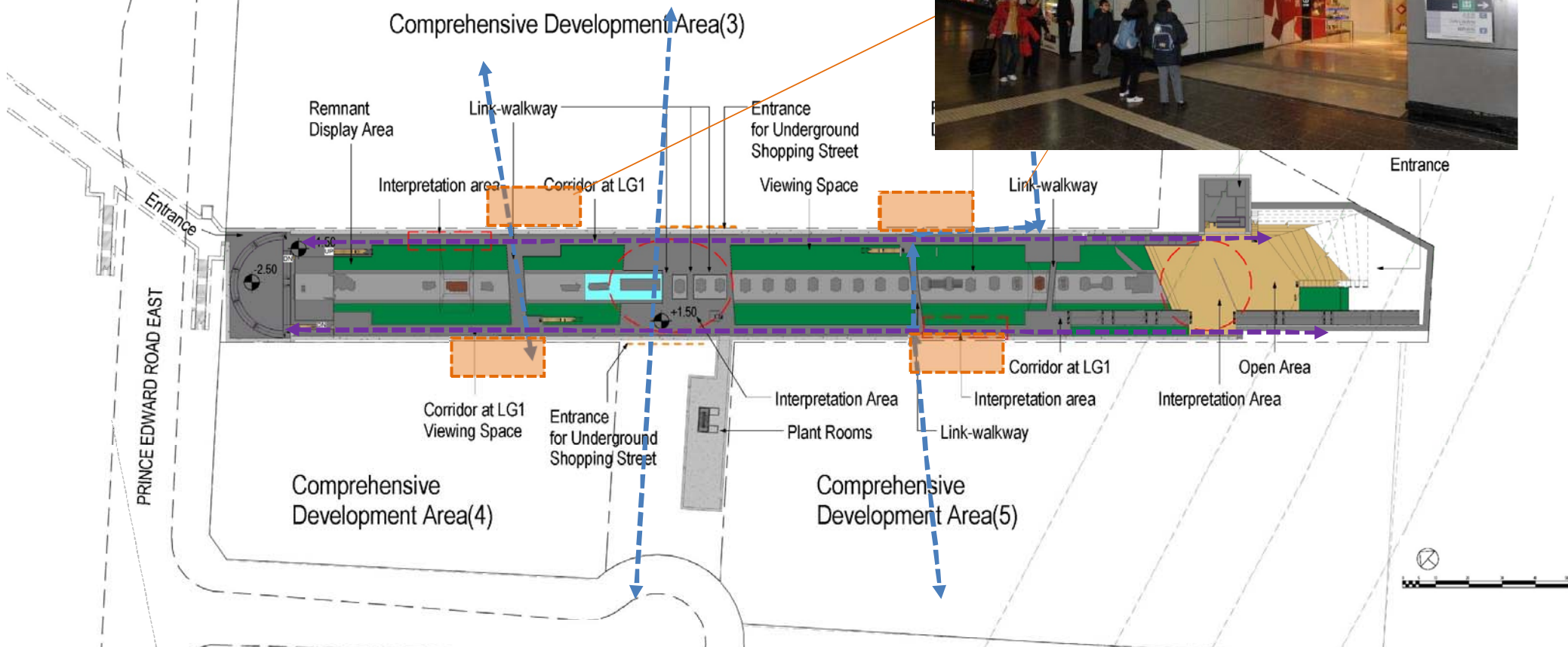
Connecting into Kai Tak Development and old urban fabric



LG1 & LG2 Plan of the Design Proposal

Design Proposal – LG1/F Plan

Connecting into Kai Tak Development and old urban fabric

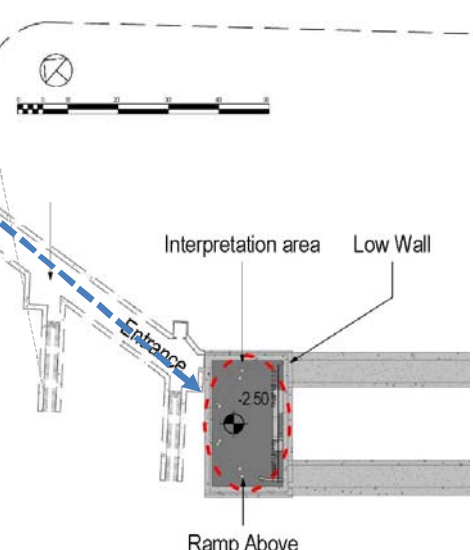
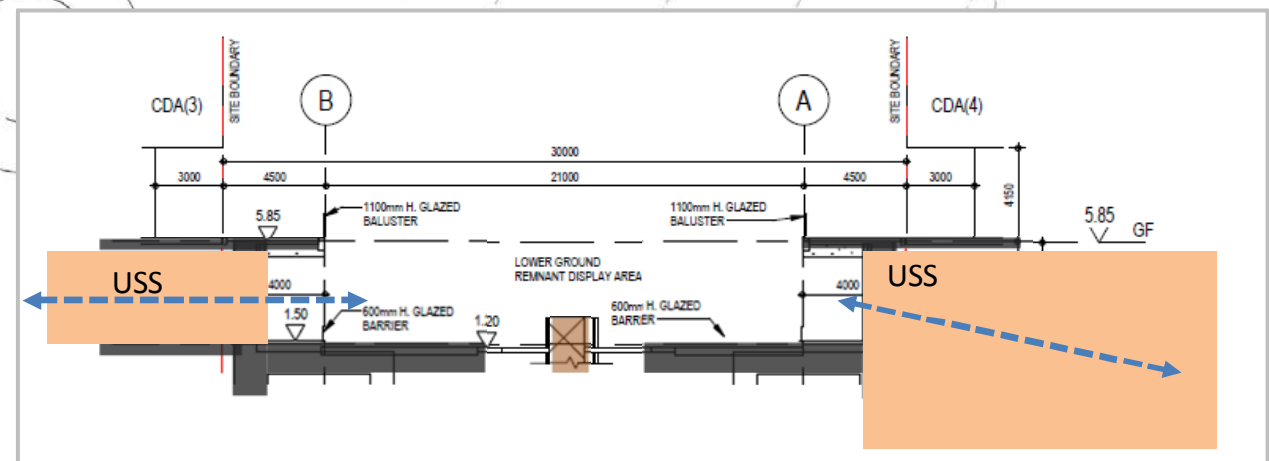
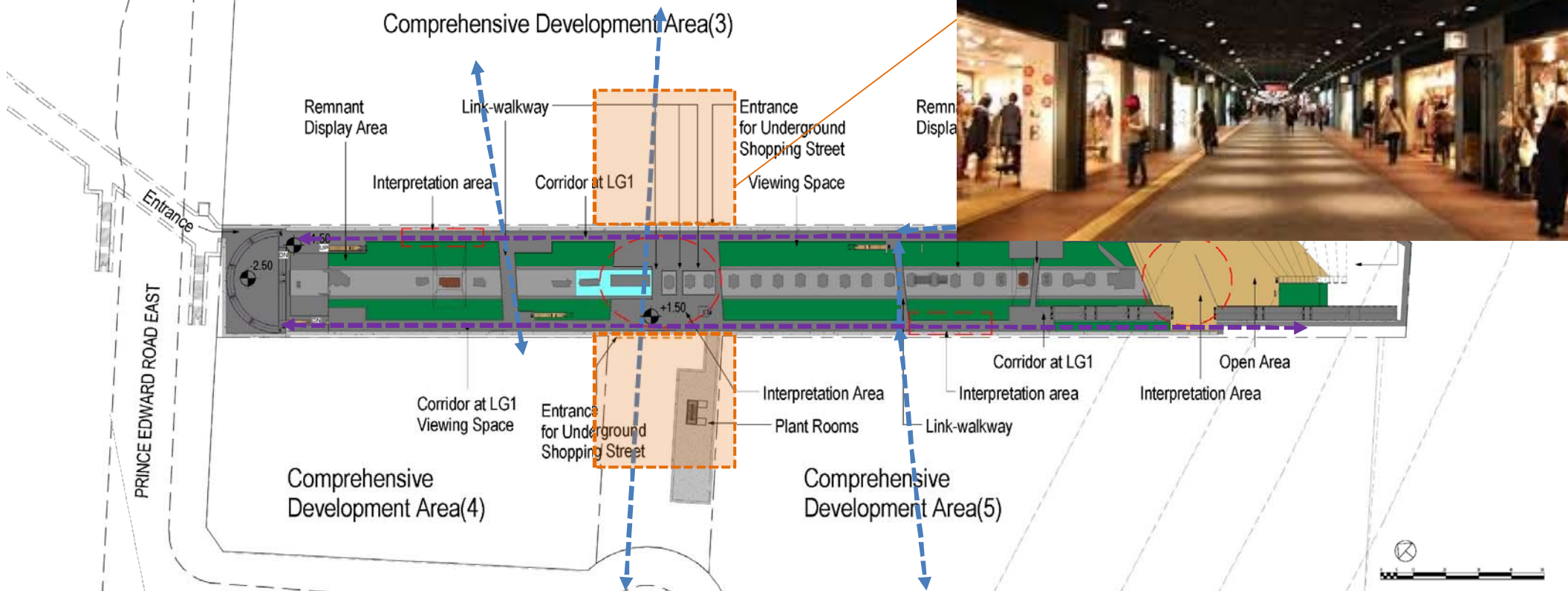


LG1 & LG2 Plan of the Design Proposal

Design Proposal – LG1/F Plan

Connecting into Kai Tak Development and old urban fabric

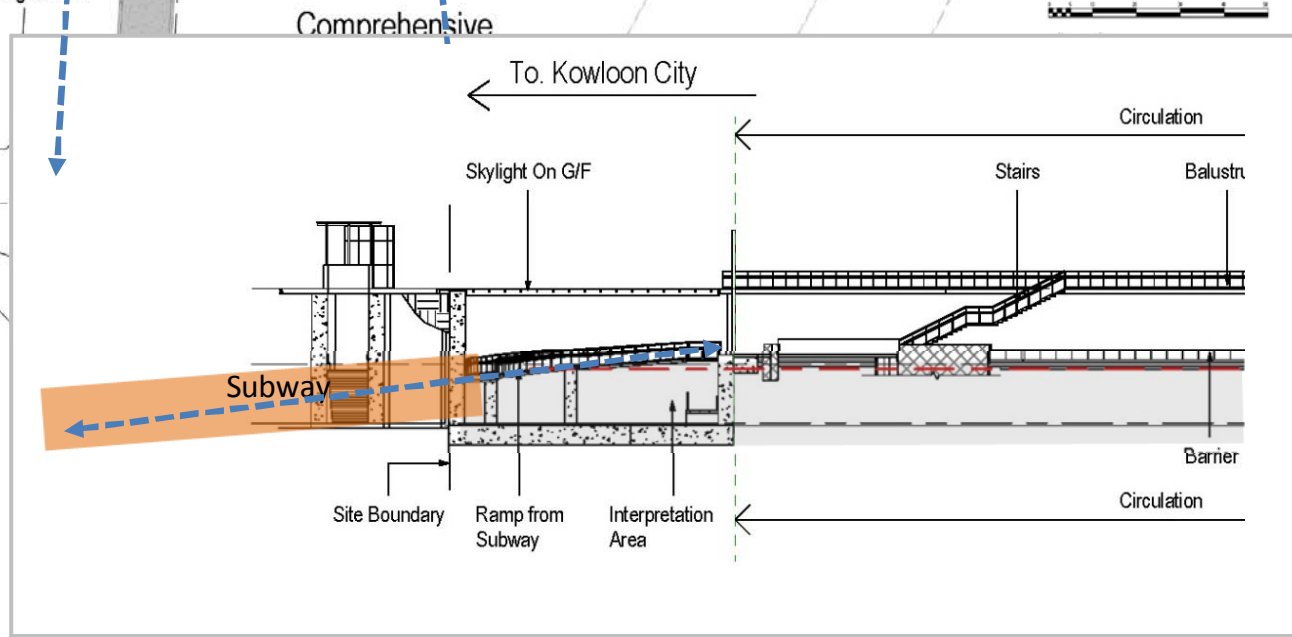
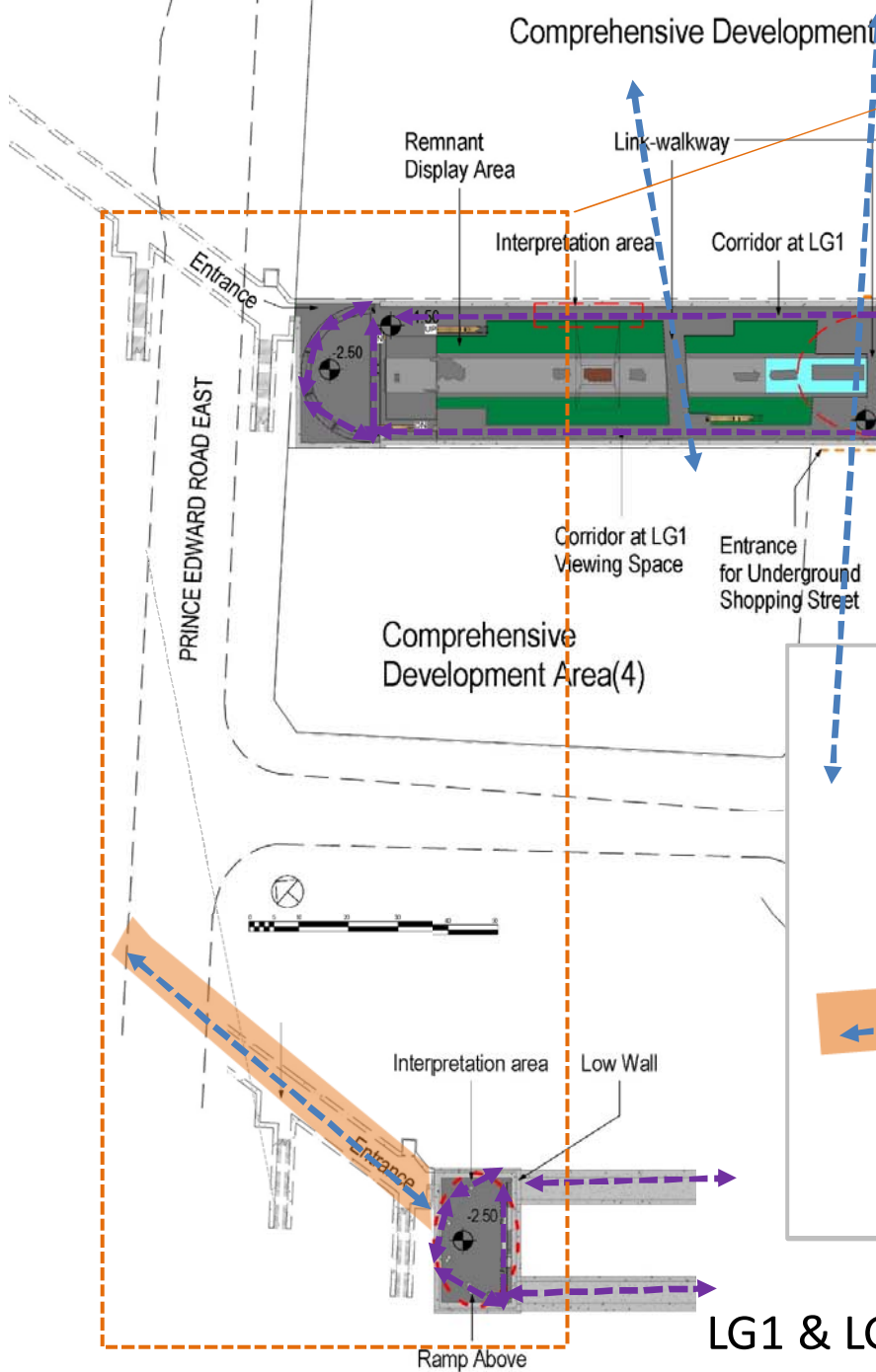
USS



LG1 & LG2 Plan of the Design Proposal

Design Proposal – LG1/F Plan

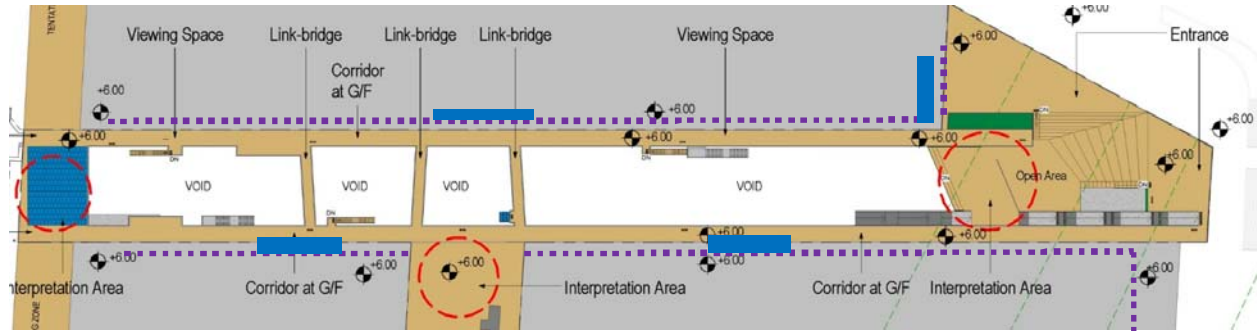
Connecting into Kai Tak Development and



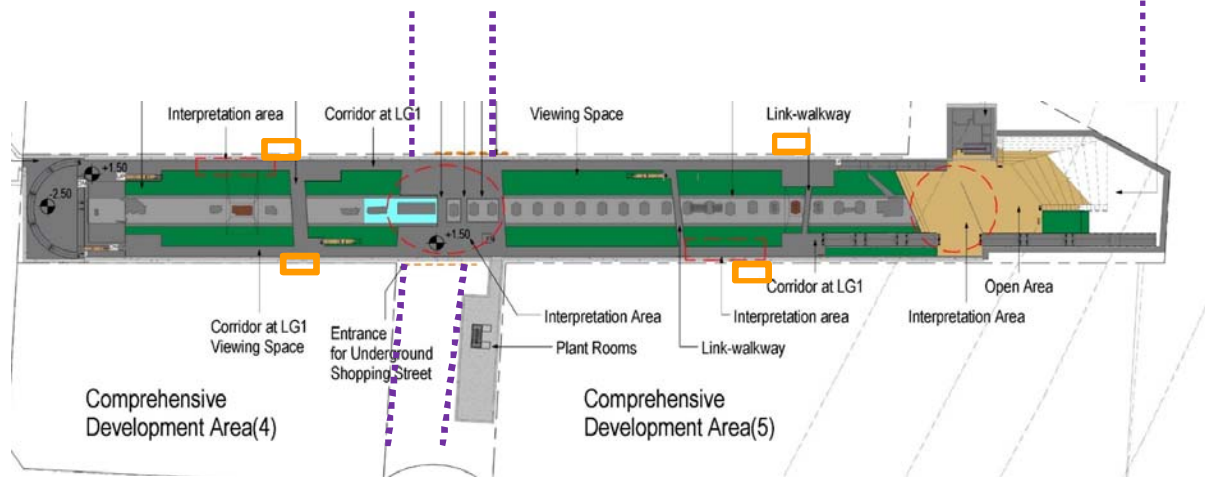
LG1 & LG2 Plan of the Design Proposal

Connection 連接

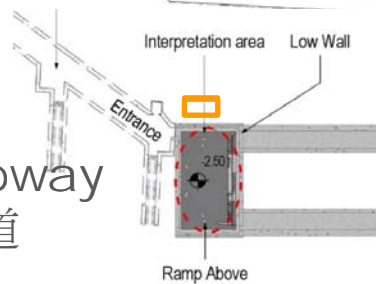
GF
地面
+6.00



LG1
地下一樓
+1.2 to +1.5



Subway
隧道
-3.6



潛在連接 Potential Connection

Proposed Passage
Connection 提議連接
= 9m(W)



reference image 參考圖像
= approx. 9m(W)

Proposed Opening at wall
提議連接
= 4m(W)

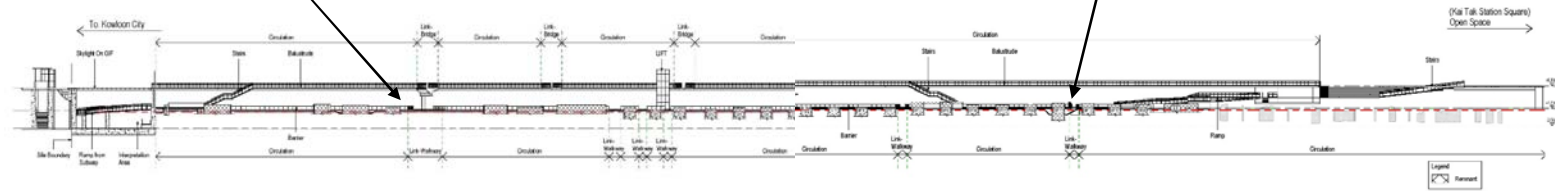
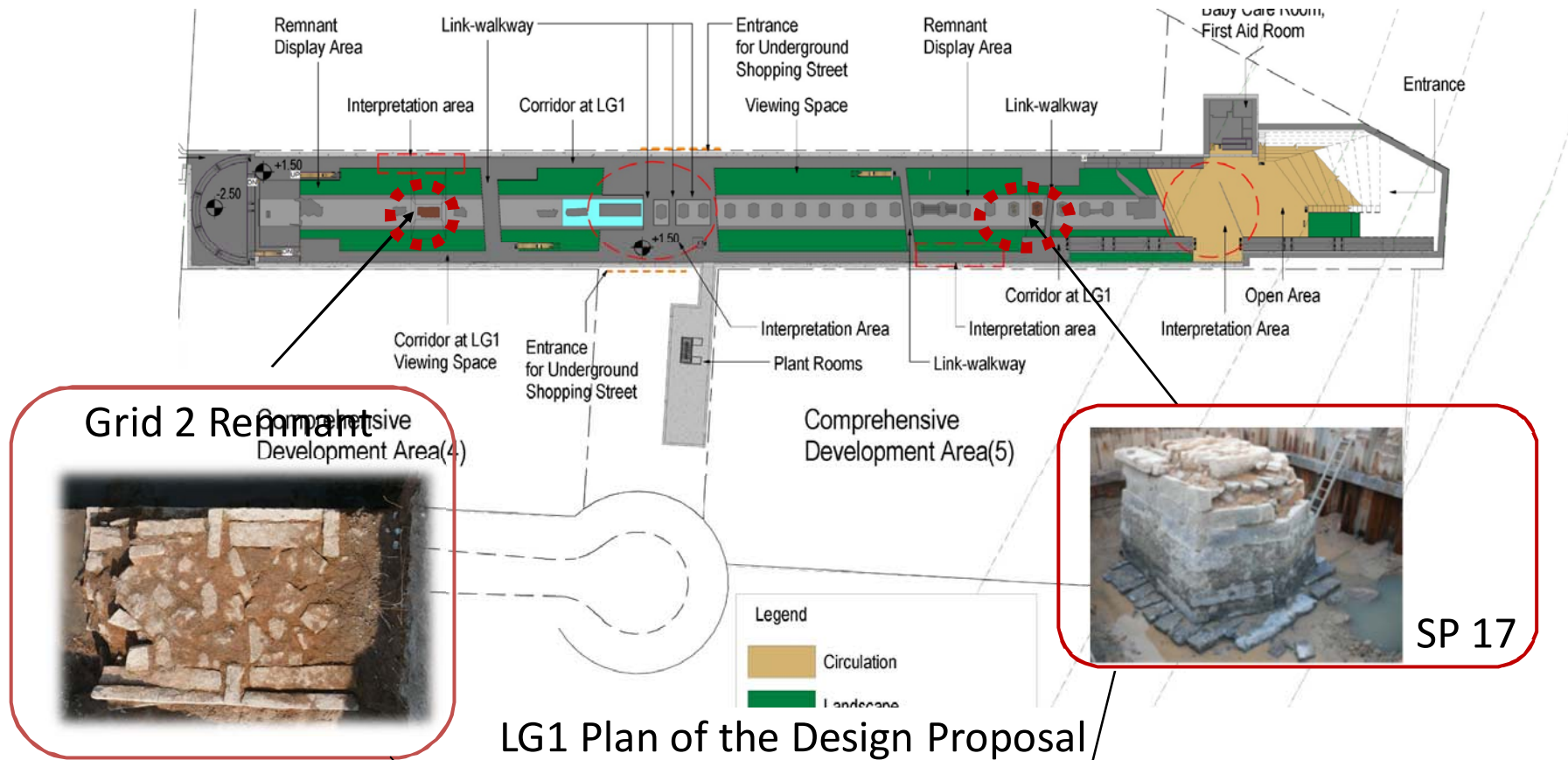


reference image 參考圖像
I Square Connection
= approx. 2.5m(H) X 4m (W)

Potential Retail Zone

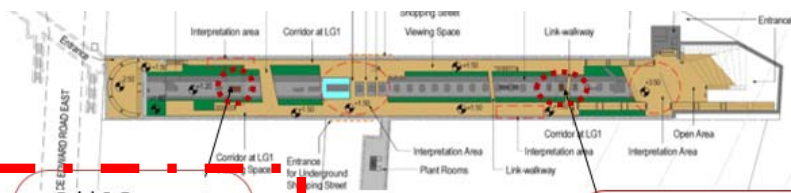
Design Proposal – LG1/F Plan

Connecting into Kai Tak Development and old urban fabric





Solid Mass section



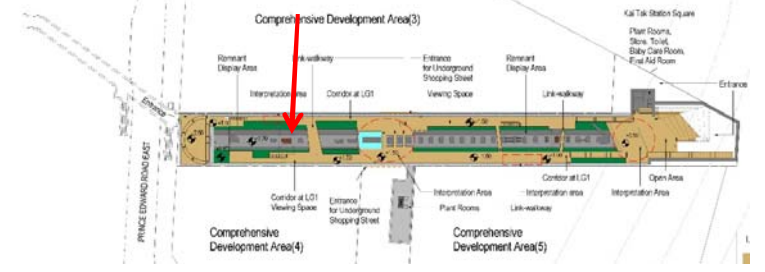
Grid 2 Remnant



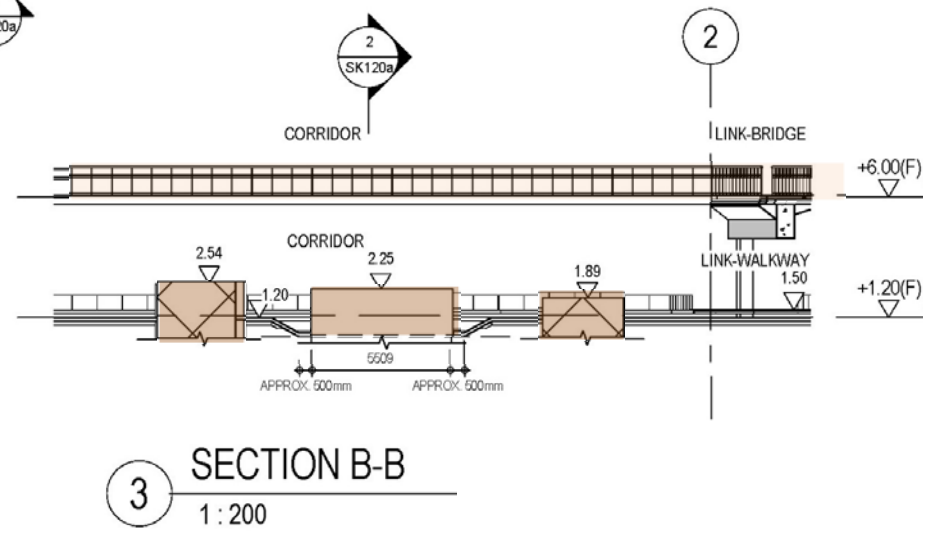
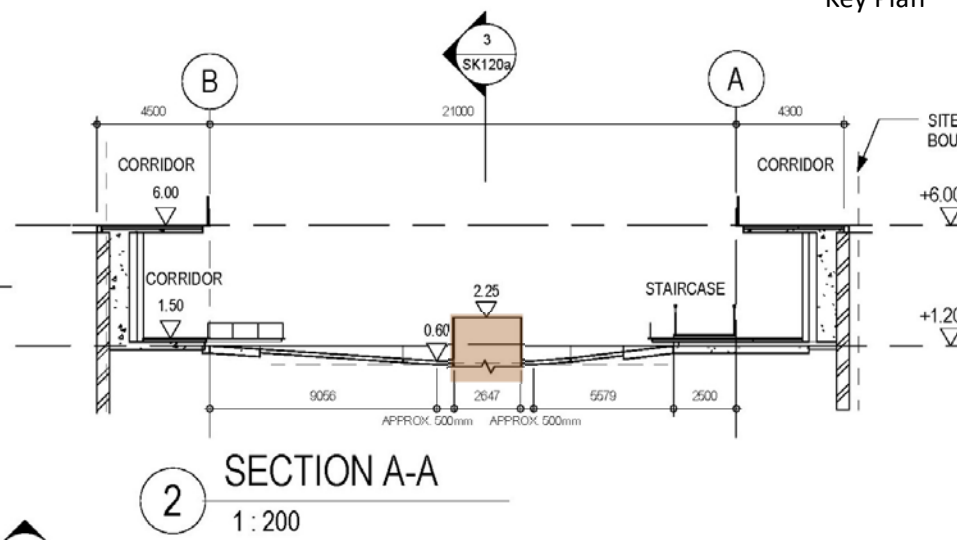
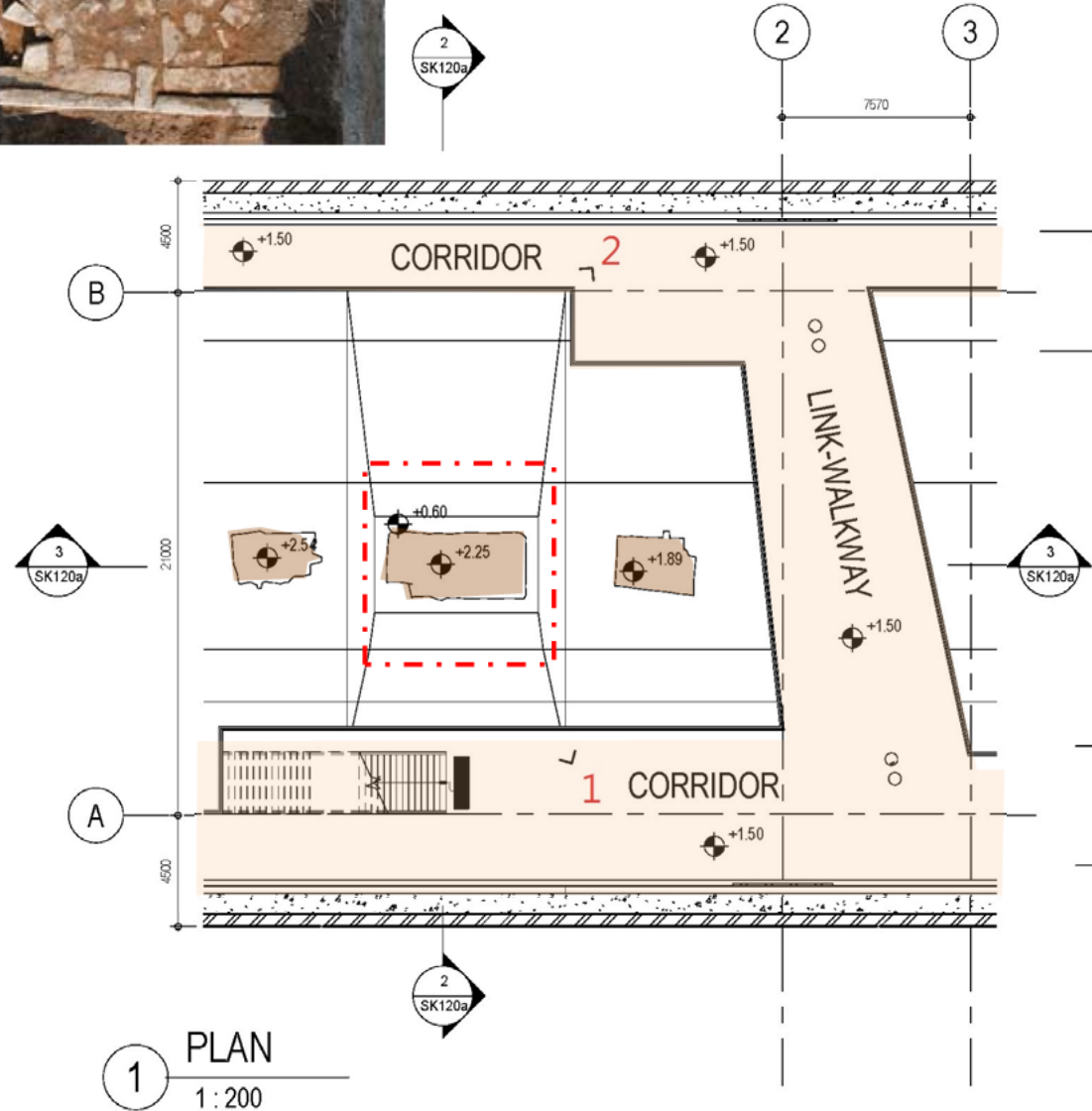
SP 17

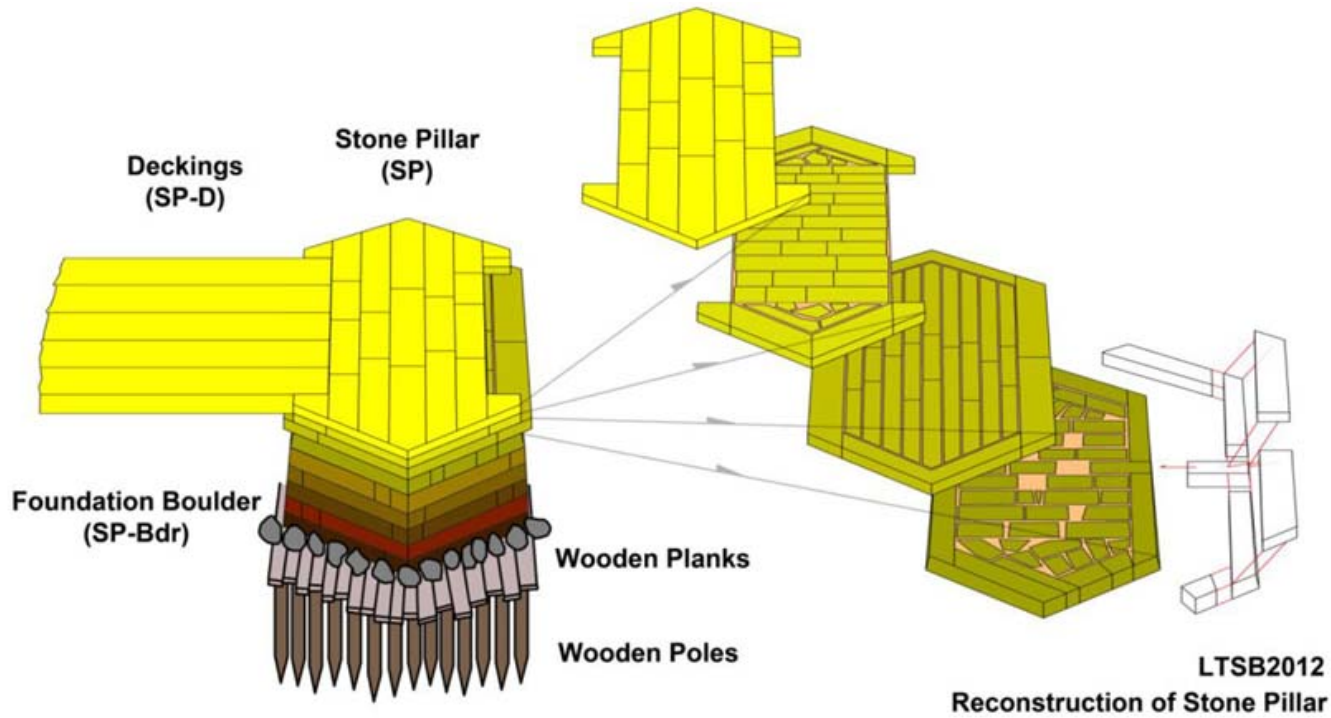
LG1 Plan of the Design Proposal

Design Proposal – Grid 2 Remnant



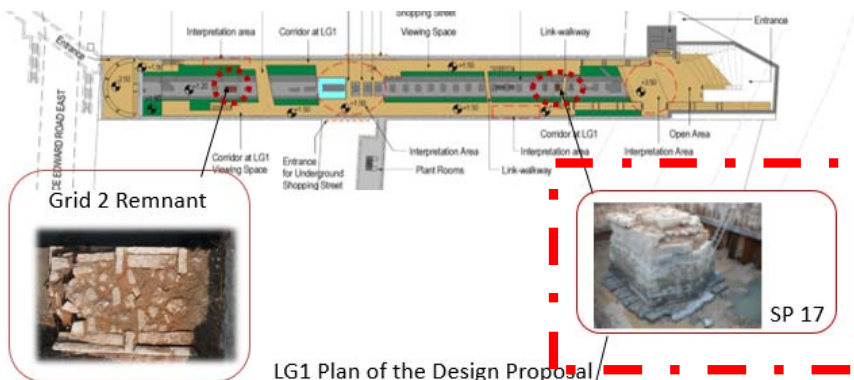
Key Plan





SP17

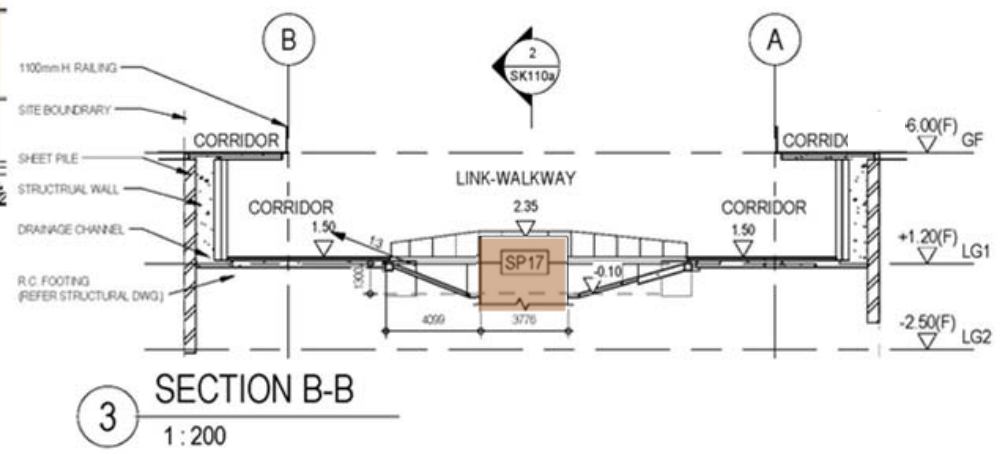
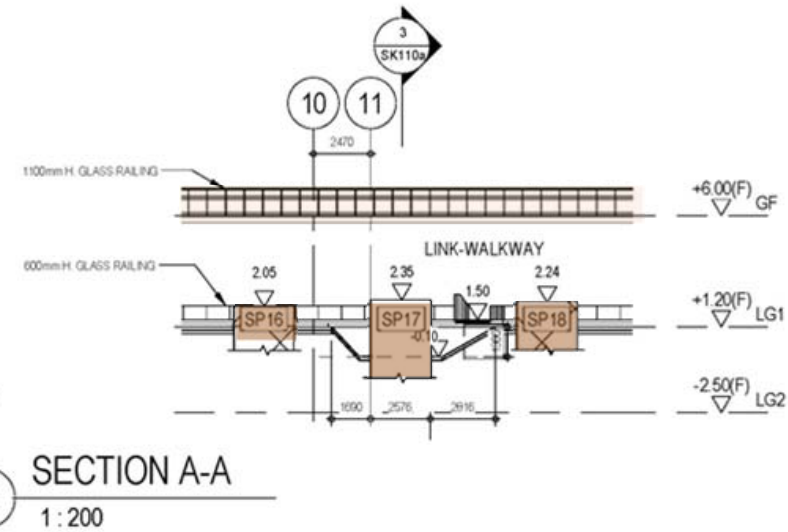
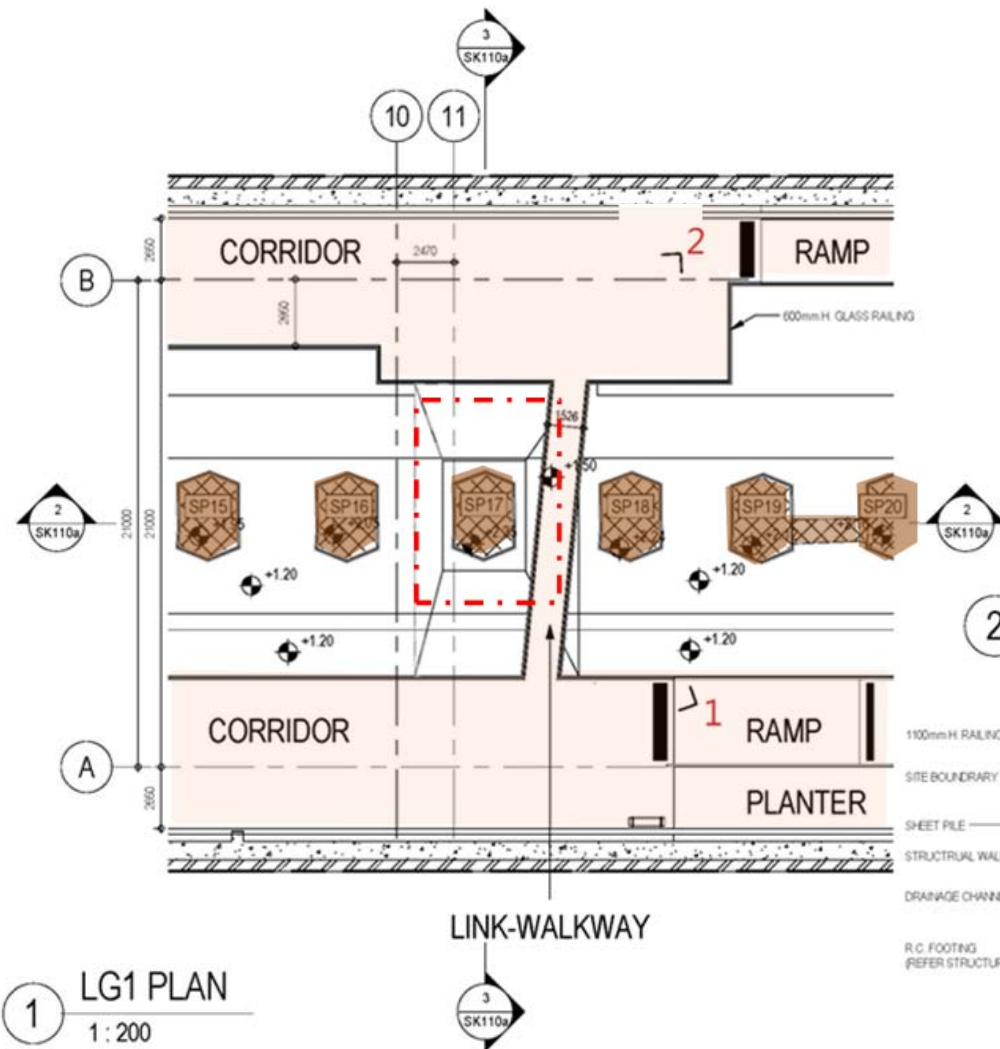
Supporting pillar



Design Proposal – SP17

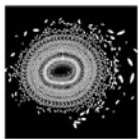
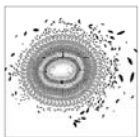


Key Plan



Design Proposal – Overall

啟德 KAI TAK 活力磁場 Current of Vitality



"Throughout the many layers of history is a buzzing current of vitality – the liveliness from the people, the intricate mapping of flight paths, the fast movements of trade and finance and the natural currents of the air and oceans – and it is precisely this flow of vigour that makes up our Kai Tak. The soil, water and nutrients are like the energy, history and culture from the surrounding areas around Kai Tak, the roots of the tree take in these nutrients and transport them throughout the trunk, into the branches to the leaves. Amongst the branches of Kai Tak live birds, insects and animals much like the residents, working population and tourists that come to Kai Tak. The leaves of Kai Tak is where photosynthesis happens, providing energy for the survival of the tree and giving out oxygen which can be swept into the air, and carried to distant shores of the world, just like the spirit of Kai Tak."

Future-driven

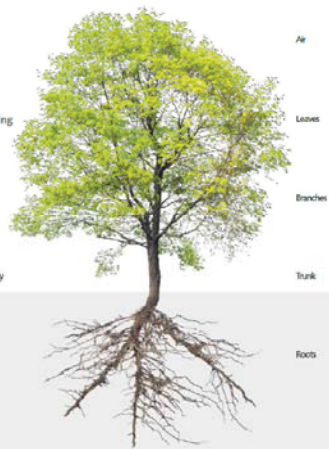
Open/Welcoming

Energetic

Natural/Healthy

Connecting

Strong-rooted



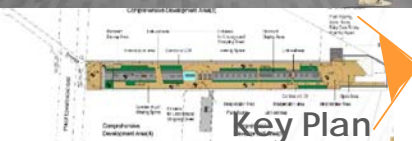
Air

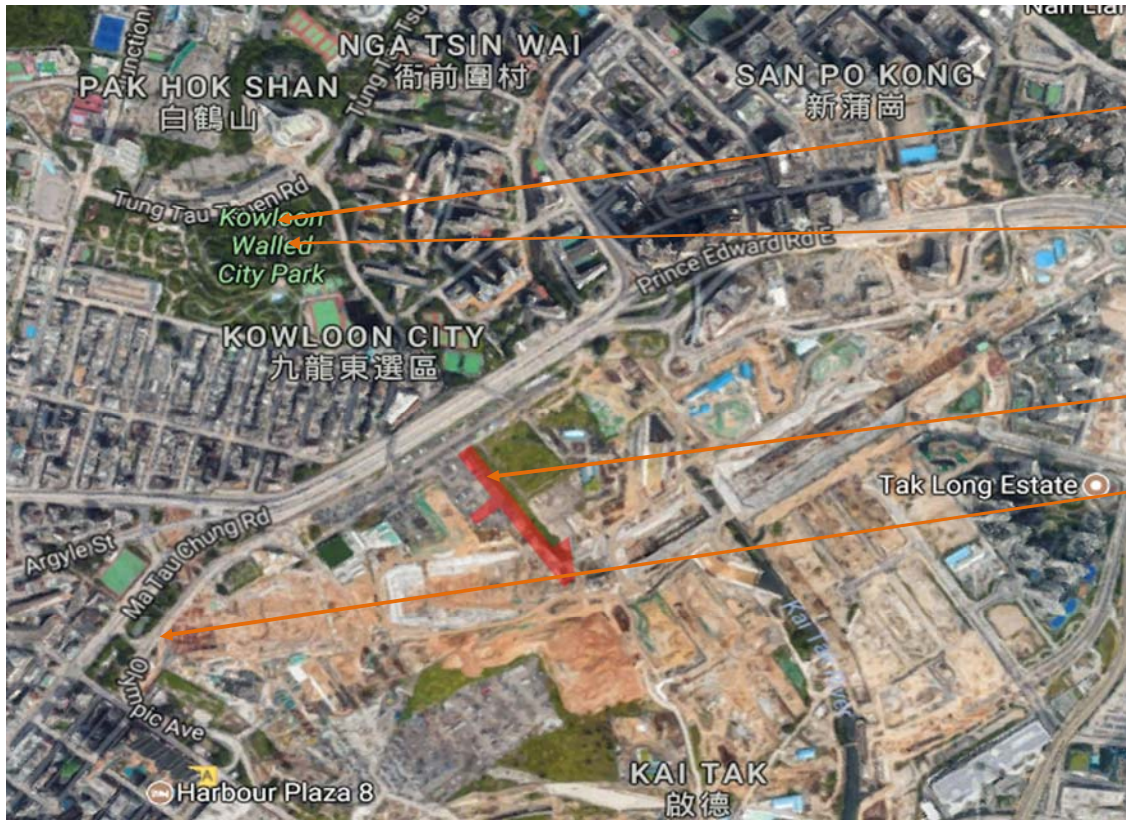
Leaves

Branches

Trunk

Roots





Former Yamen Building of Kowloon Walled city, Kowloon Walled City Park (Declared Monument)

Remnants of the South Gate of Kowloon Walled City, Kowloon Walled City Park (Declared Monument)

Lung Tsun Stone Bridge Preservation Corridor

Song/Yuan dynasty remnants



THANK YOU

