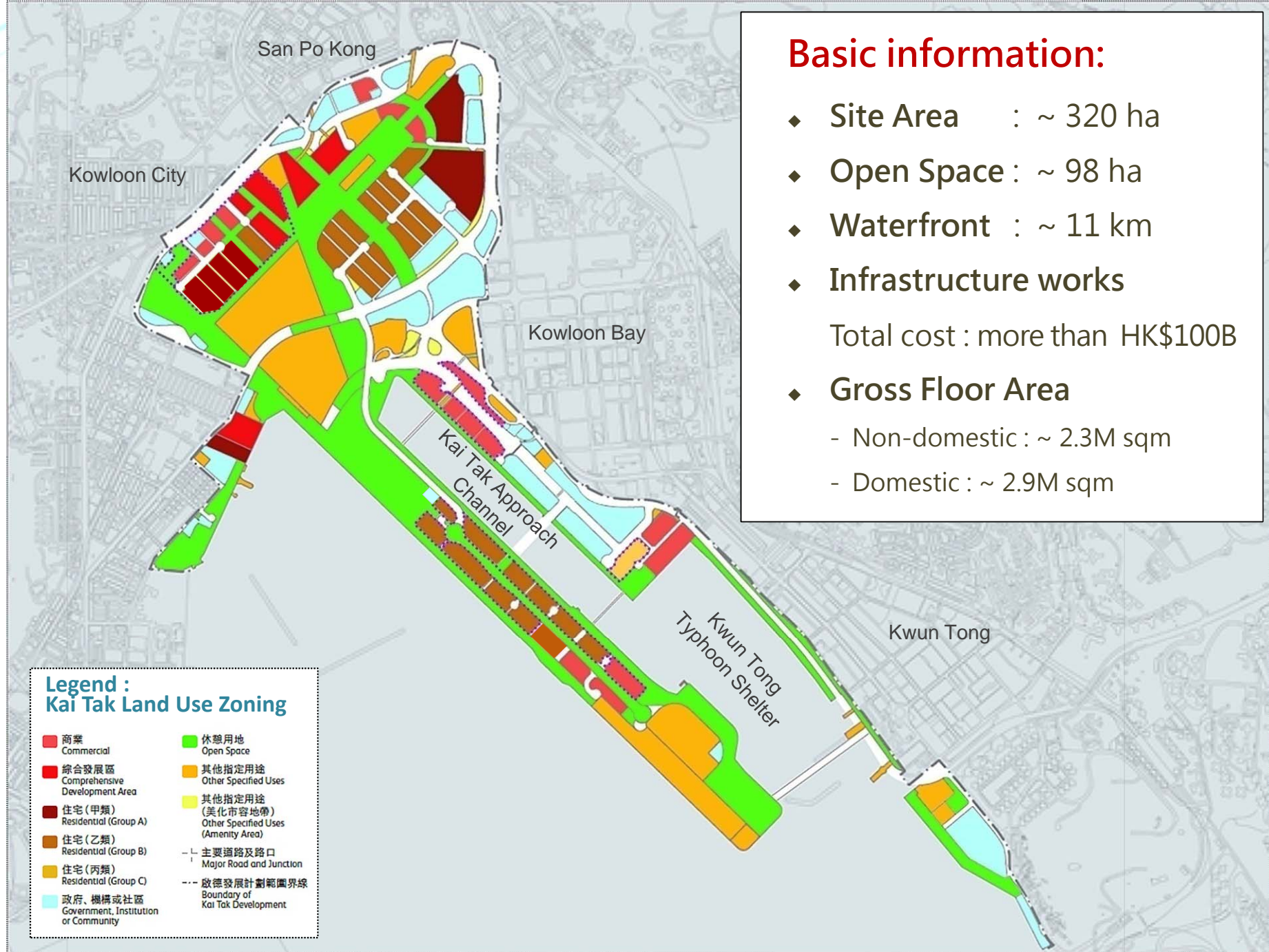


Task Force on Kai Tak Harbourfront Development

Kai Tak Development Progress Report as of May 2017

(Paper No. TFKT/11/2017)

Kai Tak Outline Zoning Plan (S/K22/5)



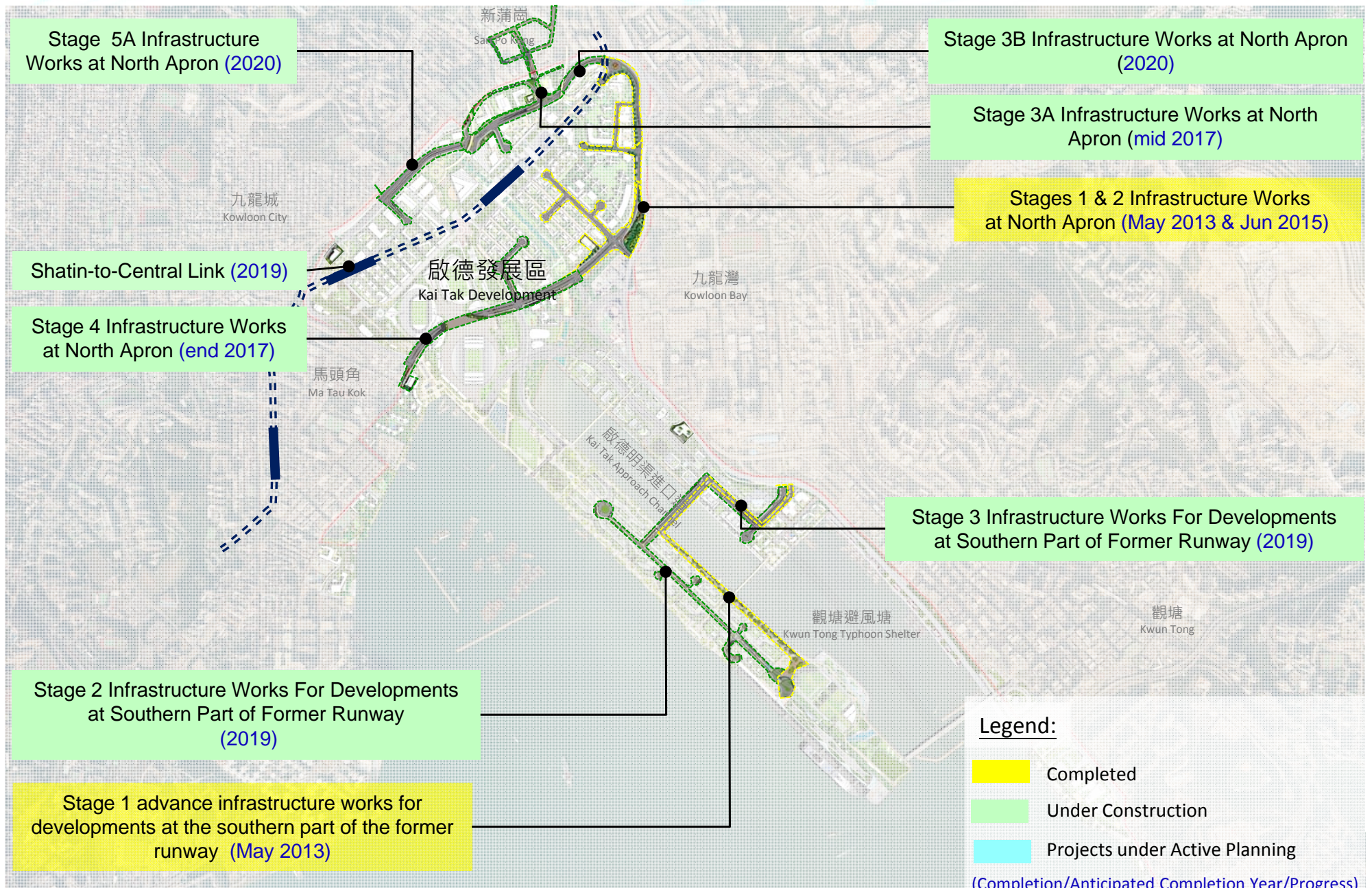
Basic information:

- ◆ Site Area : ~ 320 ha
- ◆ Open Space : ~ 98 ha
- ◆ Waterfront : ~ 11 km
- ◆ Infrastructure works
Total cost : more than HK\$100B
- ◆ Gross Floor Area
 - Non-domestic : ~ 2.3M sqm
 - Domestic : ~ 2.9M sqm

**Legend :
Kai Tak Land Use Zoning**

■ 商業 Commercial	■ 休憩用地 Open Space
■ 綜合發展區 Comprehensive Development Area	■ 其他指定用途 Other Specified Uses
■ 住宅(甲類) Residential (Group A)	■ 其他指定用途 (美化市容地帶) Other Specified Uses (Amenity Area)
■ 住宅(乙類) Residential (Group B)	— 主要道路及路口 Major Road and Junction
■ 住宅(丙類) Residential (Group C)	- - - 啟德發展計劃範圍界線 Boundary of Kai Tak Development
■ 政府、機構或社區 Government, Institution or Community	

Major Roadworks and Transportation



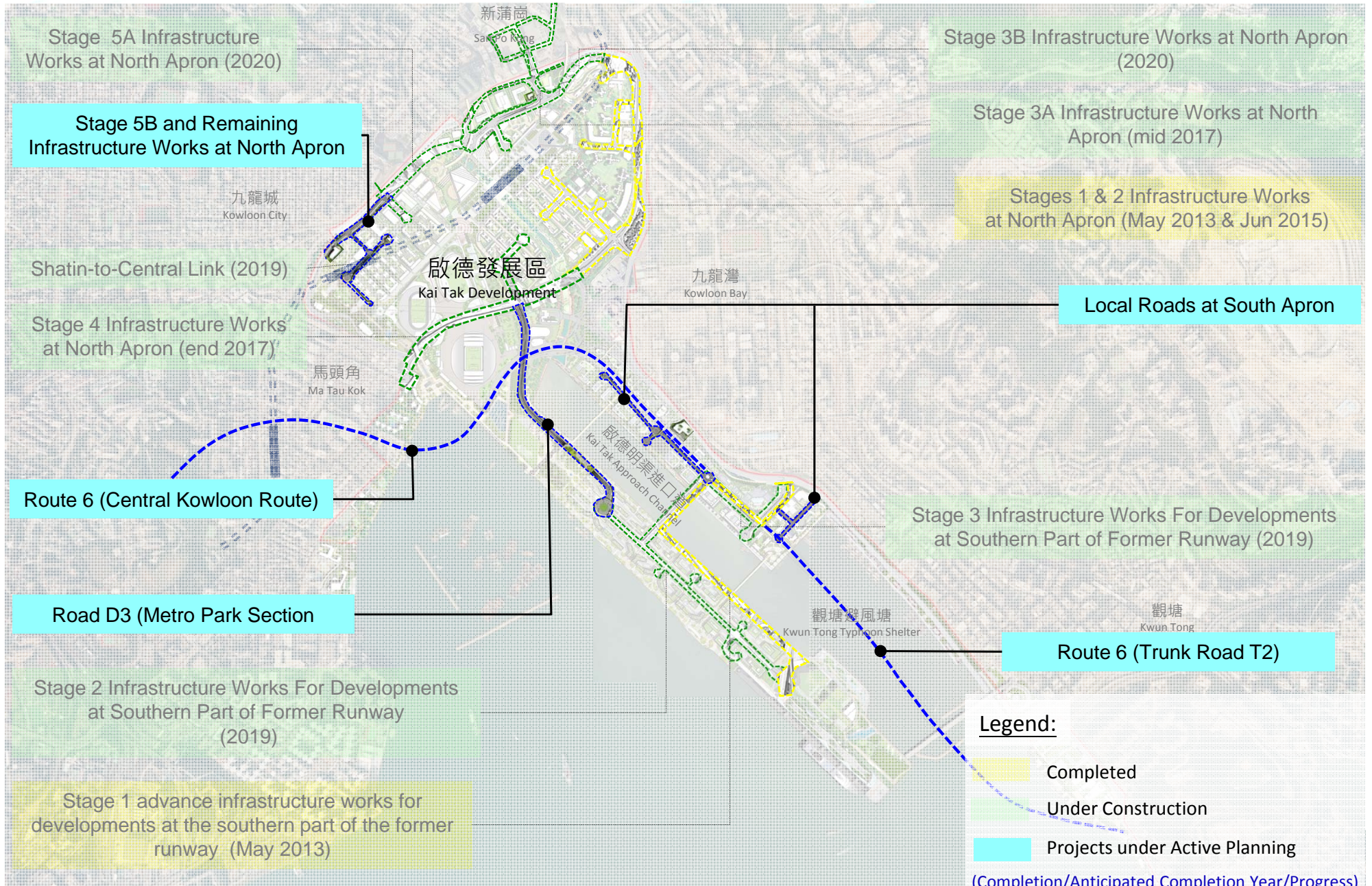
Legend:

- Completed
- Under Construction
- Projects under Active Planning

(Completion/Anticipated Completion Year/Progress)

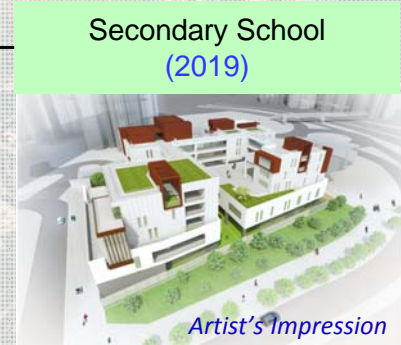


Major Roadworks and Transportation



Major GIC Buildings / Facilities

Kowloon East Regional Headquarters & Operational Base cum Ngau Tau Kok Divisional Police Station
(2019)



Two Primary Schools
(Dec 2015)

DCS Phase III, Packages A, B & C
(End 2017, End 2018 & End 2020)

Kai Tak Fire Station cum Ambulance Depot
(June 2013)

Trade and Industry Tower
(Apr 2015)

District Cooling System (DCS) Phases I and II
(2013 & 2014)

Improvement Works at KTAC and KTTS (Phase I)
(July 2014)

Hong Kong Children's Hospital
(Q3 2017)

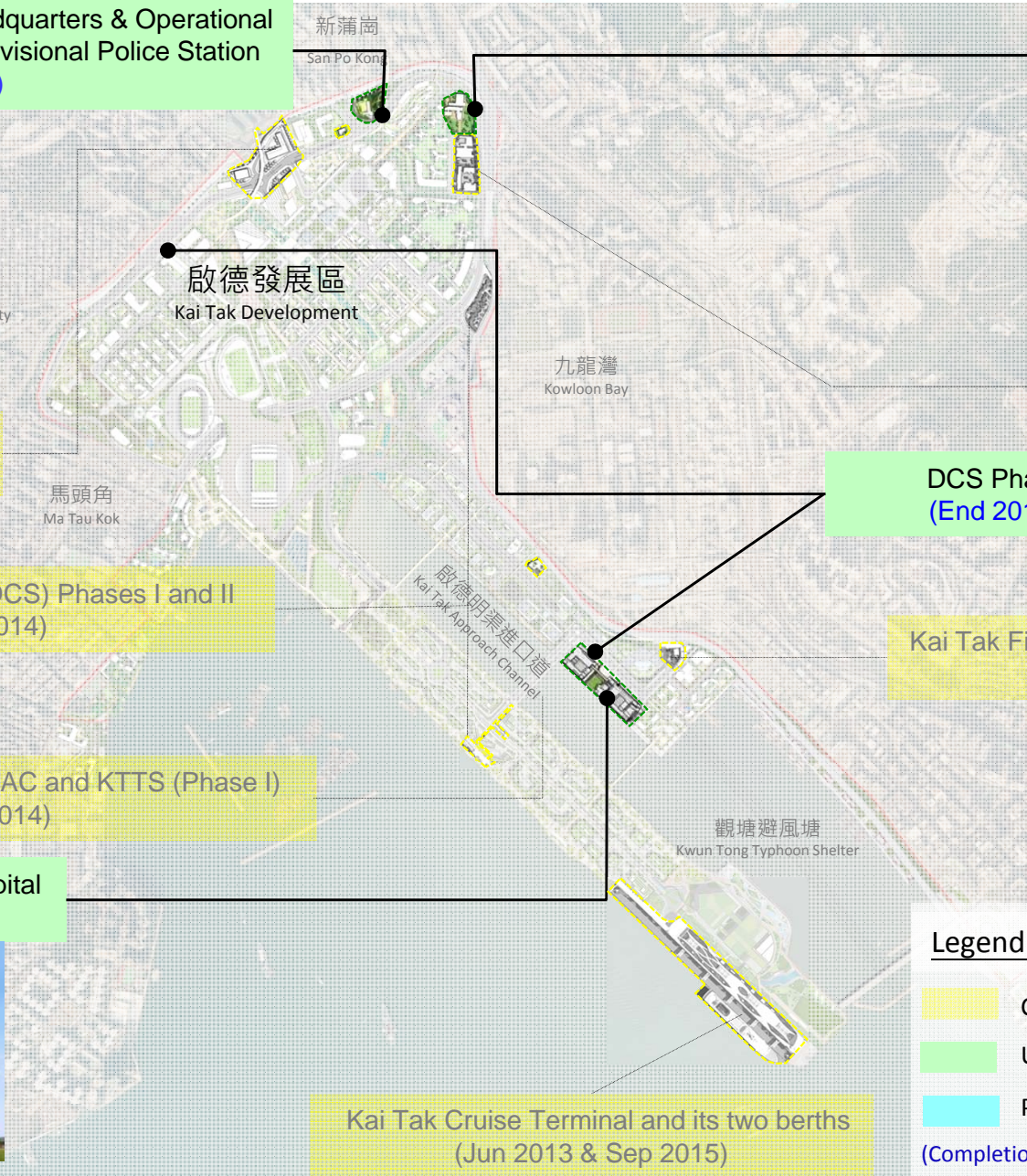


Kai Tak Cruise Terminal and its two berths
(Jun 2013 & Sep 2015)

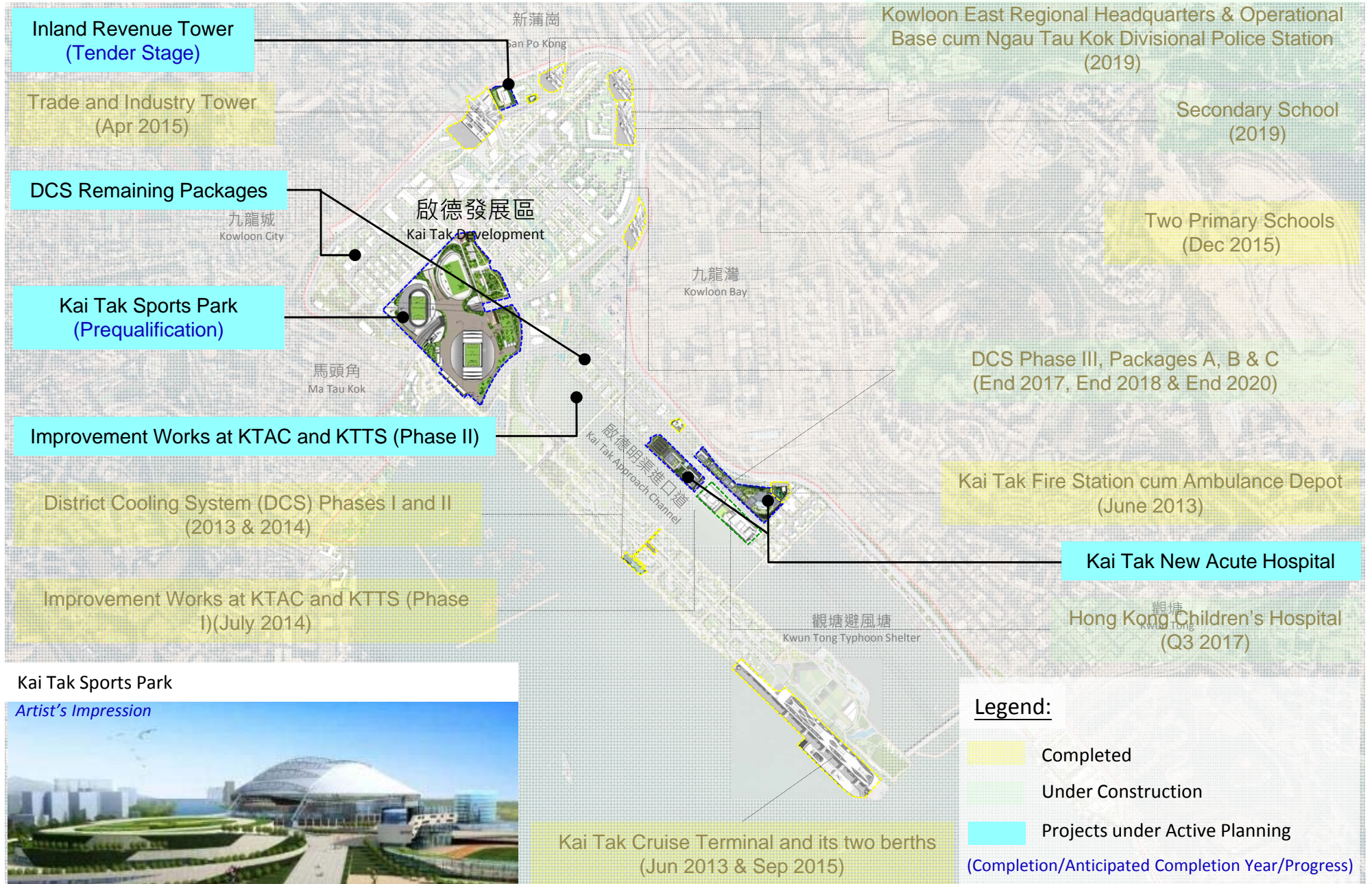
Legend:

- Completed
- Under Construction
- Projects under Active Planning

(Completion/Anticipated Completion Year/Progress)

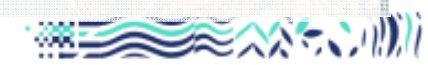


Major GIC Buildings / Facilities

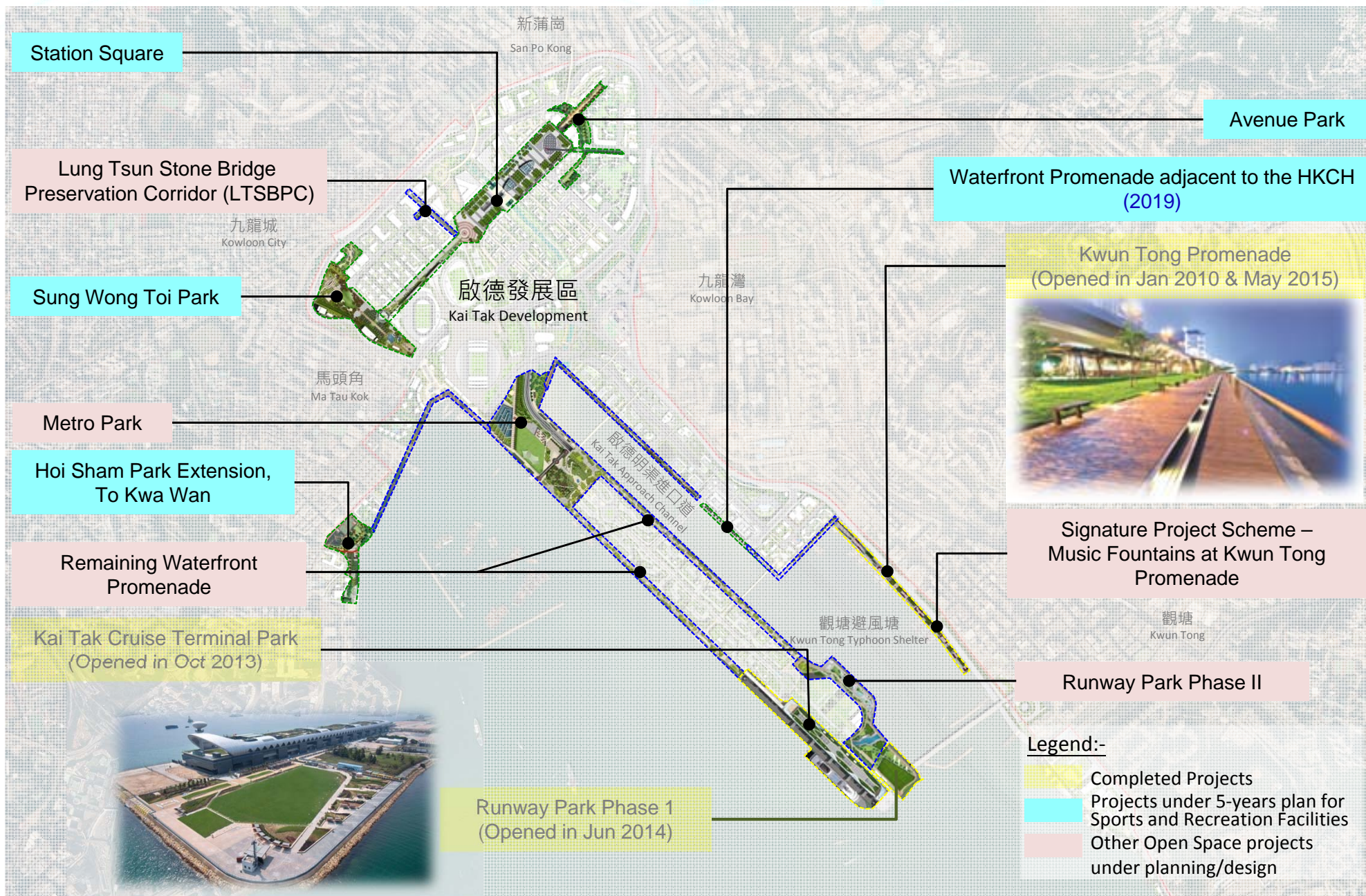


Kai Tak Sports Park

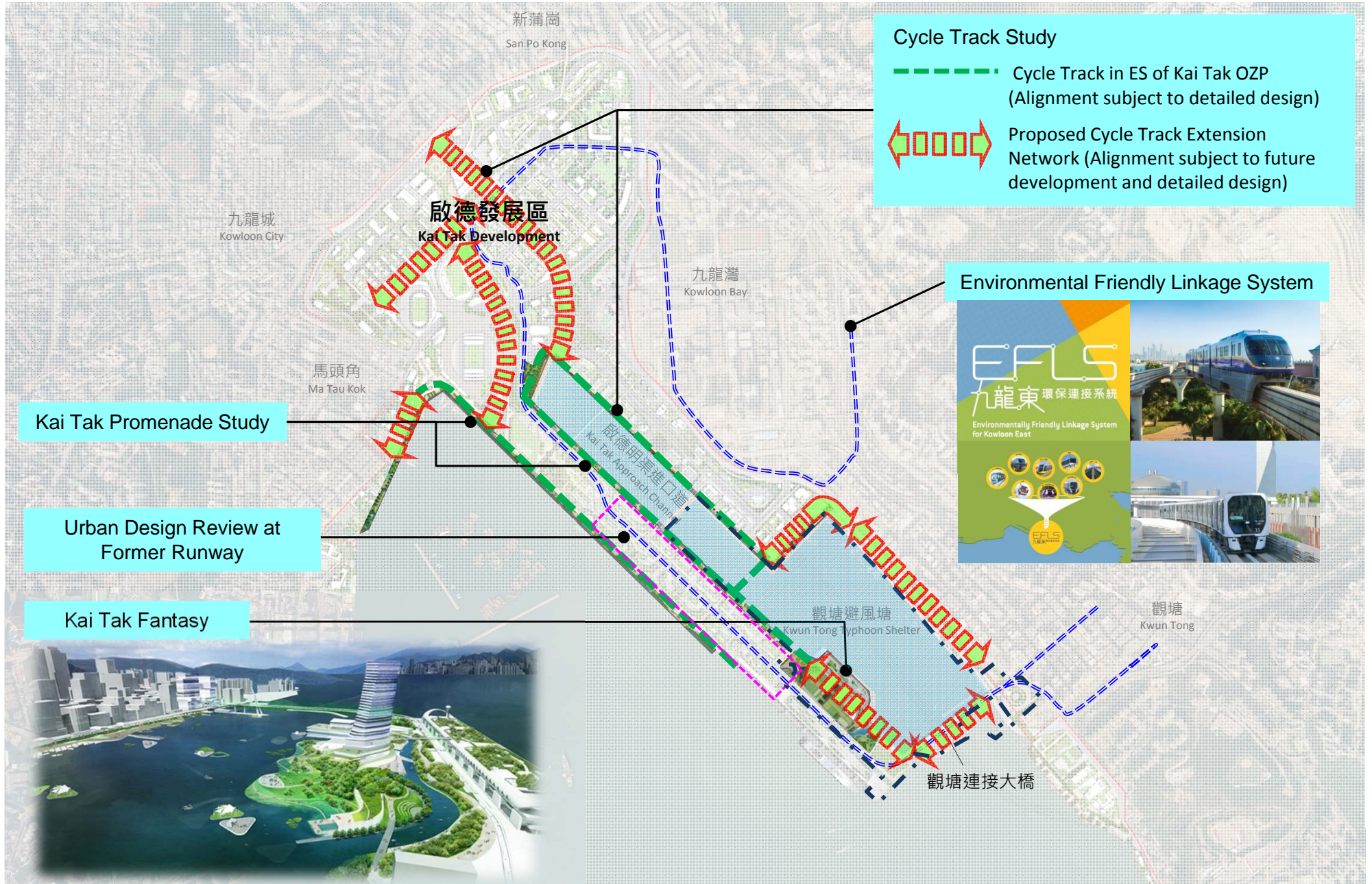
Artist's Impression



Open Space Projects



Studies on KTD



Cycle Track Study

- Cycle Track in ES of Kai Tak OZP (Alignment subject to detailed design)
- Proposed Cycle Track Extension Network (Alignment subject to future development and detailed design)

Kai Tak Promenade Study

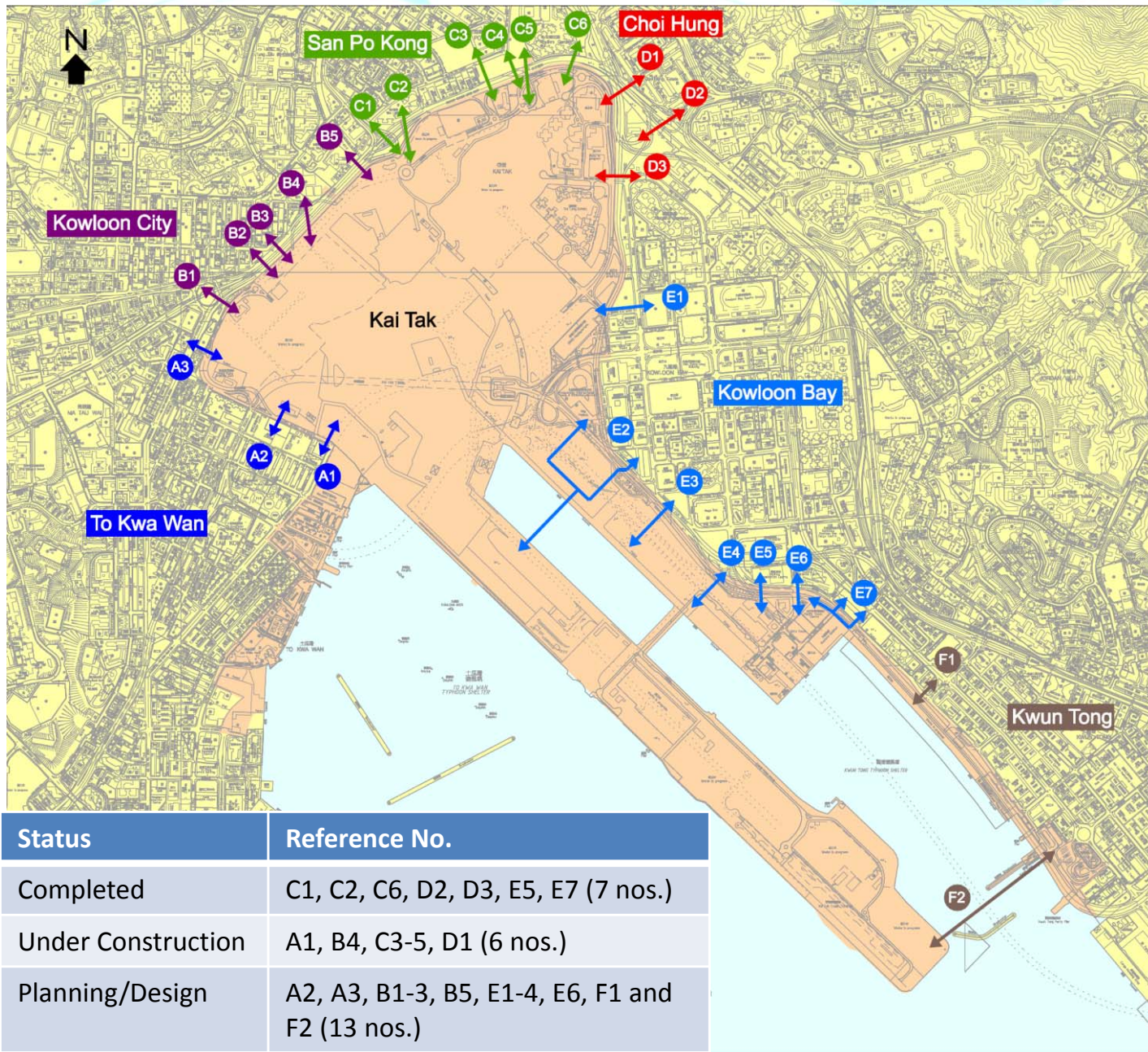
Urban Design Review at Former Runway

Kai Tak Fantasy

Environmental Friendly Linkage System



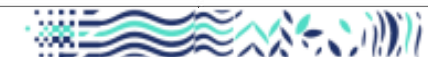
Pedestrian Connections with Hinterlands



Legend: (Pedestrian Connection)

- A1** At-grade crossing at To Kwa Wan Road/Sung Wong Toi Road
- A2** At-grade crossing/footbridge crossing over Sung Wong Toi Road
- A3** At-grade crossing at Olympic Ave
- B1** Enhance and extend existing subways at Olympic Garden
- B2** Enhance existing subway underneath PERE
- B3** Subway to connect Nga Tsin Wai Road to Underground Shopping Street (USS)
- B4** Subway to connect Lung Tsun Stone Bridge Preservation Corridor with Shek Ku Lung Road Playground
- B5** Subway adjacent to Kai Tak River
- C1** Enhance existing subway at the interchange between PERE and Choi Hung Road
- C2** Curvilinear landscaped elevated walkway connecting the Latitude
- C3** Subway to connect King Tai Court and USS
- C4** Enhance existing subway underneath PERE and extend to connect to open space adjoining Rhythm Garden
- C5** Landscaped elevated walkway to connect to open space
- C6** Footbridge to connect Rhythm Garden
- D1** Subway to connect to Choi Hung Estate
- D2** Enhance existing subway near Ping Shek Estate/Choi Hung Estate
- D3** Enhance at-grade crossing near Richland Gardens
- E1** Several at-grade crossings via Eastern Road and Kai Wah Street
- E2** Elevated walkway from KITEC across Kai Fuk Road through north of South Apron area to Metro Park
- E3** Extension/modification of existing footbridge above Kai Fuk Road
- E4** Landscape elevated walkway to connect KTN/AH
- E5** Existing underpass underneath Kwun Tong Bypass
- E6** Enhance existing at-grade crossing at Cheung Yip Street/Hoi Bun Road
- E7** Existing at-grade crossings across Hoi Bun Road
- F1** Enhance several at-grade crossing along Hoi Bun Road
- F2** Bridge link to connect Kwun Tong waterfront with Kai Tak Point

Status	Reference No.
Completed	C1, C2, C6, D2, D3, E5, E7 (7 nos.)
Under Construction	A1, B4, C3-5, D1 (6 nos.)
Planning/Design	A2, A3, B1-3, B5, E1-4, E6, F1 and F2 (13 nos.)



Thank You