

**Harbourfront Commission
Task Force on Kai Tak Harbourfront Development**

**Revitalisation of Tsui Ping River
Stage 1 Public Engagement**

(Paper No. TFKT 01/2017)

13 January 2017

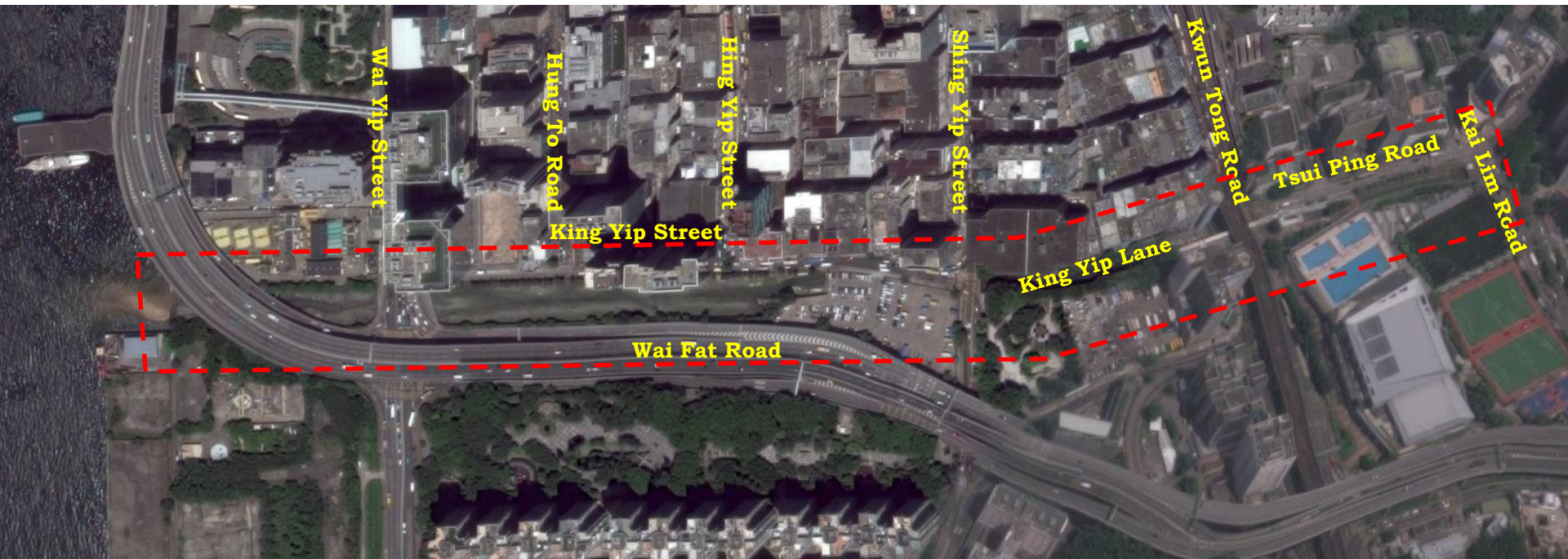
Content

- To introduce preliminary design concepts of “Revitalisation of Tsui Ping River”
- To introduce the schedule of Stage 1 Public Engagement
- To seek Members’ views on the Project

Background

King Yip Street Nullah

- Constructed more than 50 years ago
- Located along Tsui Ping Road, King Yip Lane and King Yip Street, between Kai Lim Road and the harbour



Background

Energizing Kowloon East

- Transformation of Kowloon East into an attractive alternative Core Business District 2
- Five main focuses under the Conceptual Master Plan version 5.0 promulgated by EKEO in November 2016
 - ◆ Walkability & Mobility
 - ◆ Green CBD
 - ◆ Smart City
 - ◆ Socio-economic Vibrancy
 - ◆ The Spirit of Creation
- The proposed revitalisation of Tsui Ping River will be a key feature of the Green CBD.

Background

Revitalisation of Tsui Ping River

- Situated in the centre of Kwun Tong District, coupled with its inherent riverine characteristics, the watercourse is a precious space lending itself very well to being transformed into a riverside environment for public enjoyment.
- We aspire to create a Tsui Ping River that is revitalised environmentally and ecologically, and well connected with the neighbourhood, to serve the dual purposes of not only an upgraded drainage infrastructure, but also a water-friendly public amenity.

Key Objectives

1. Reducing Flood Risk

- ◆ To enhance the flood conveyance function of the existing river channel

2. Revitalising the River

- ◆ To provide waterscape, landscape, ecological and water quality enhancement
- ◆ To provide green riverine corridor

3. Improving Walkability and Connectivity

- ◆ To provide walkways alongside the river
- ◆ To provide cross-river walkways and landscaped decks

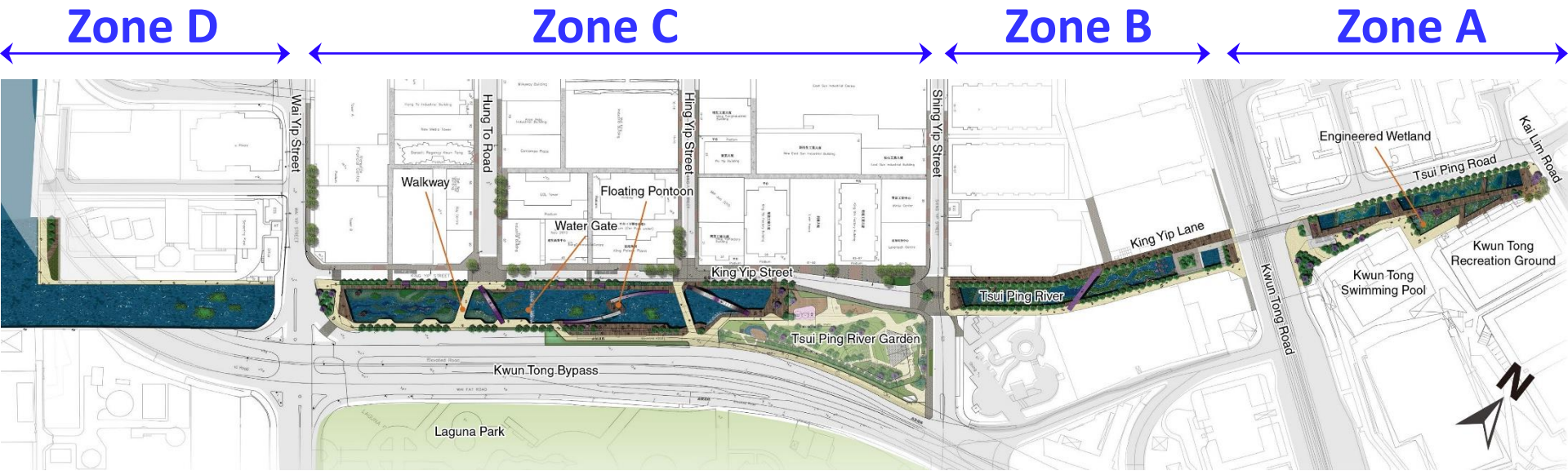
4. Fostering a Vibrant Riverine Public Space

- ◆ To make Tsui Ping River a landmark where one can experience the riverine scenery and leisure activities

Works Items

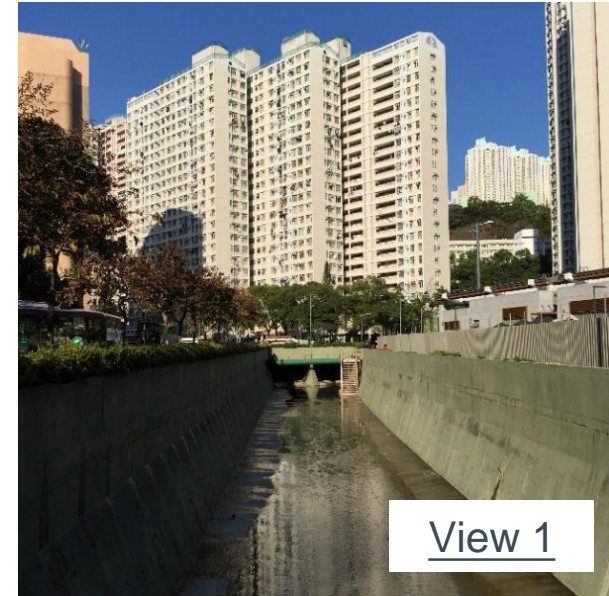
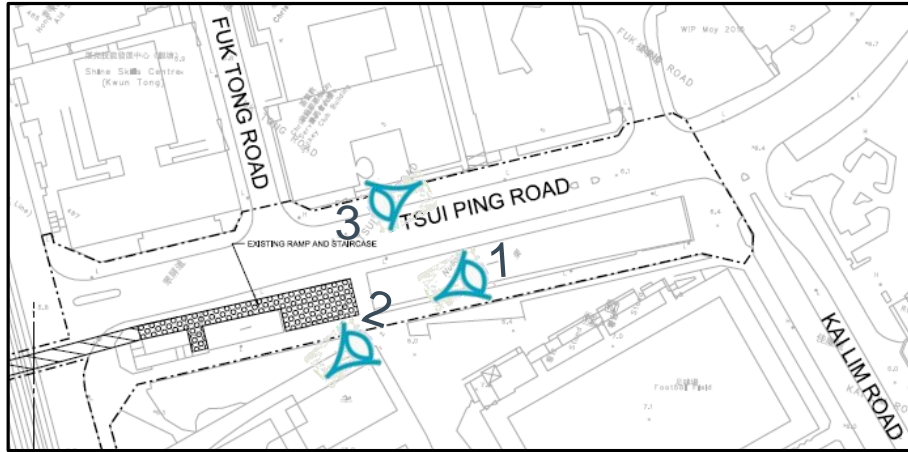
- **Revitalisation of the existing River, through the provision of waterscape design and water features**
- **Provision of landscaped walkways and footbridges along the River to enhance walkability and connectivity**
- **Provision of landscaped decks over the River**
- **Modification and face-lifting of the Kwun Tong Road Footbridge**
- **Related enhancement work in the vicinity of the River**

Preliminary Design Concepts



Zone A

(Between Kai Lim Road and Kwun Tong Road)



View 1



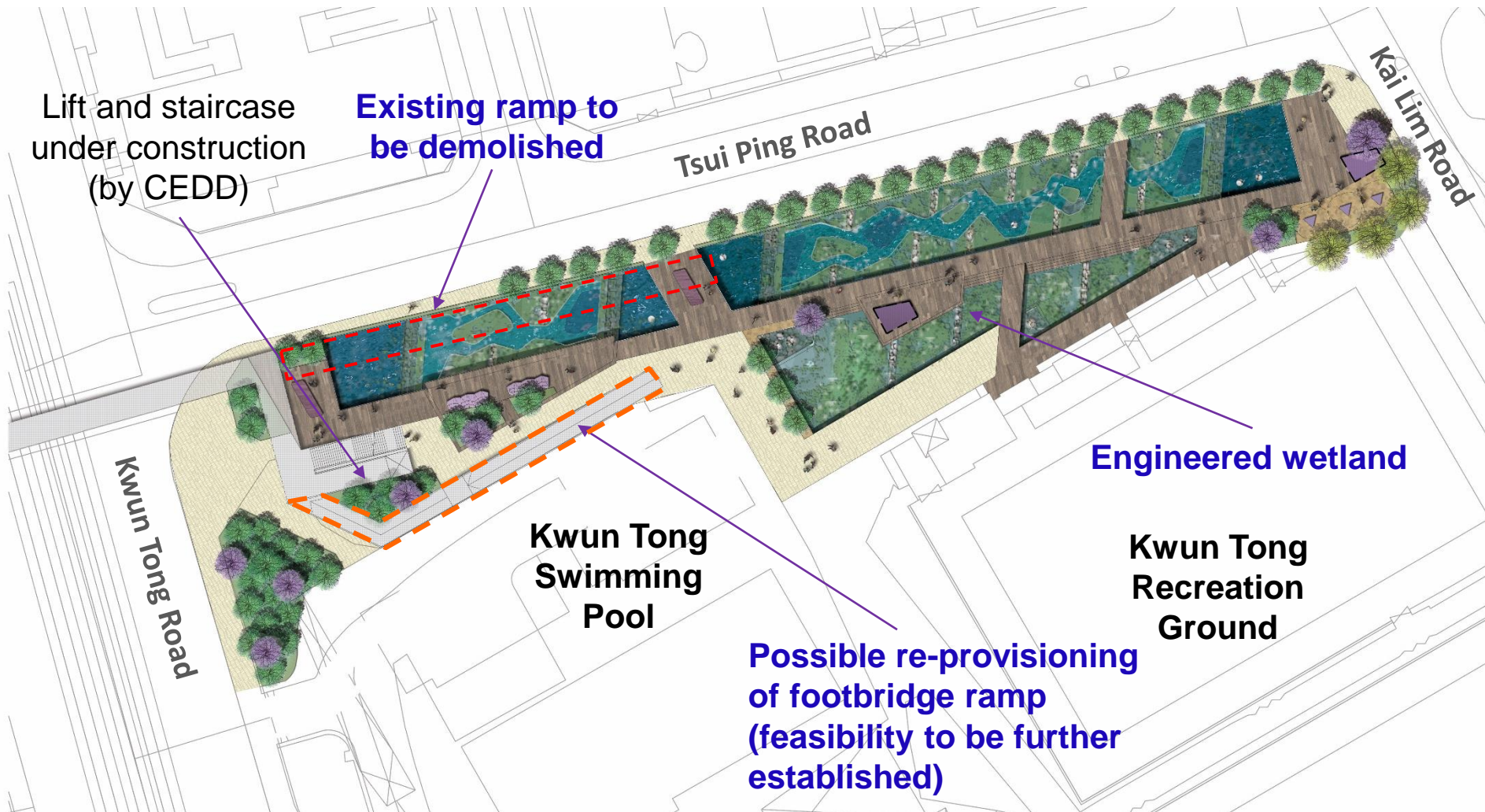
View 2



View 3

Zone A

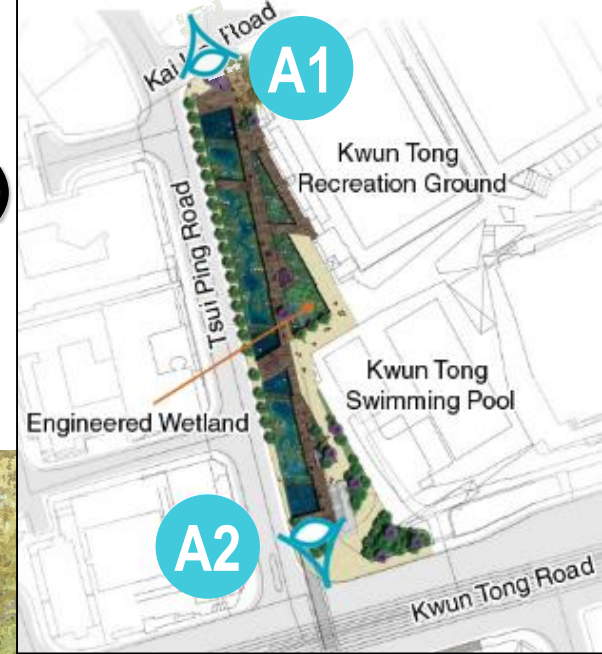
(Between Kai Lim Road and Kwun Tong Road)



Zone A

(Between Kai Lim Road and Kwun Tong Road)

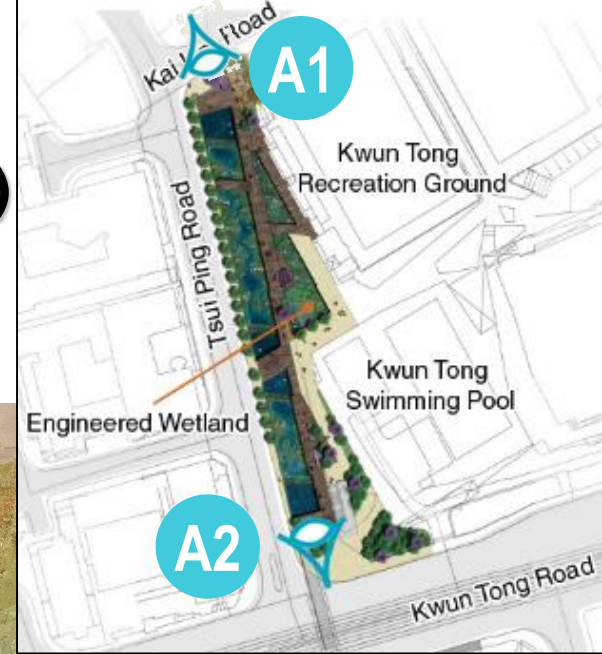
Photomontage A1 (near Kwun Tong Recreation Ground)



Zone A

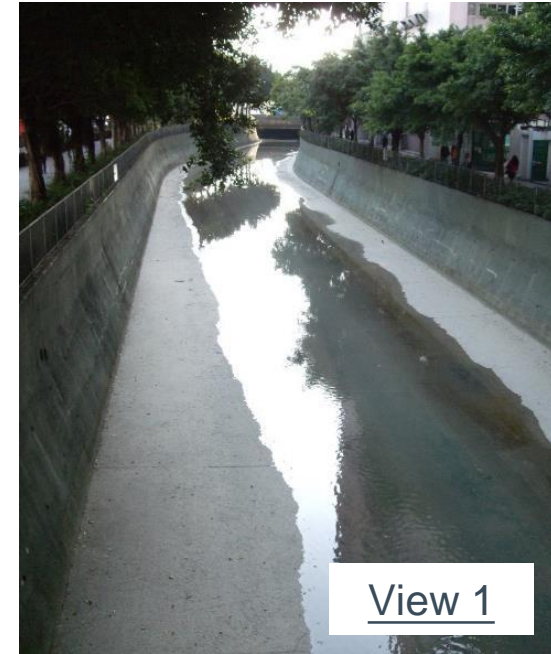
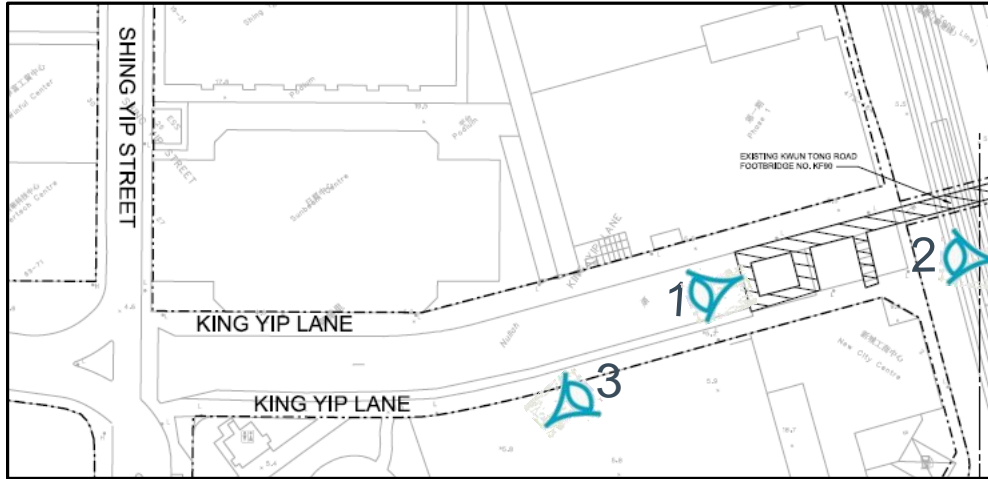
(Between Kai Lim Road and Kwun Tong Road)

Photomontage A2 (near Kwun Tong Swimming Pool)



Zone B

(Between Kwun Tong Road and Shing Yip Street)



View 1



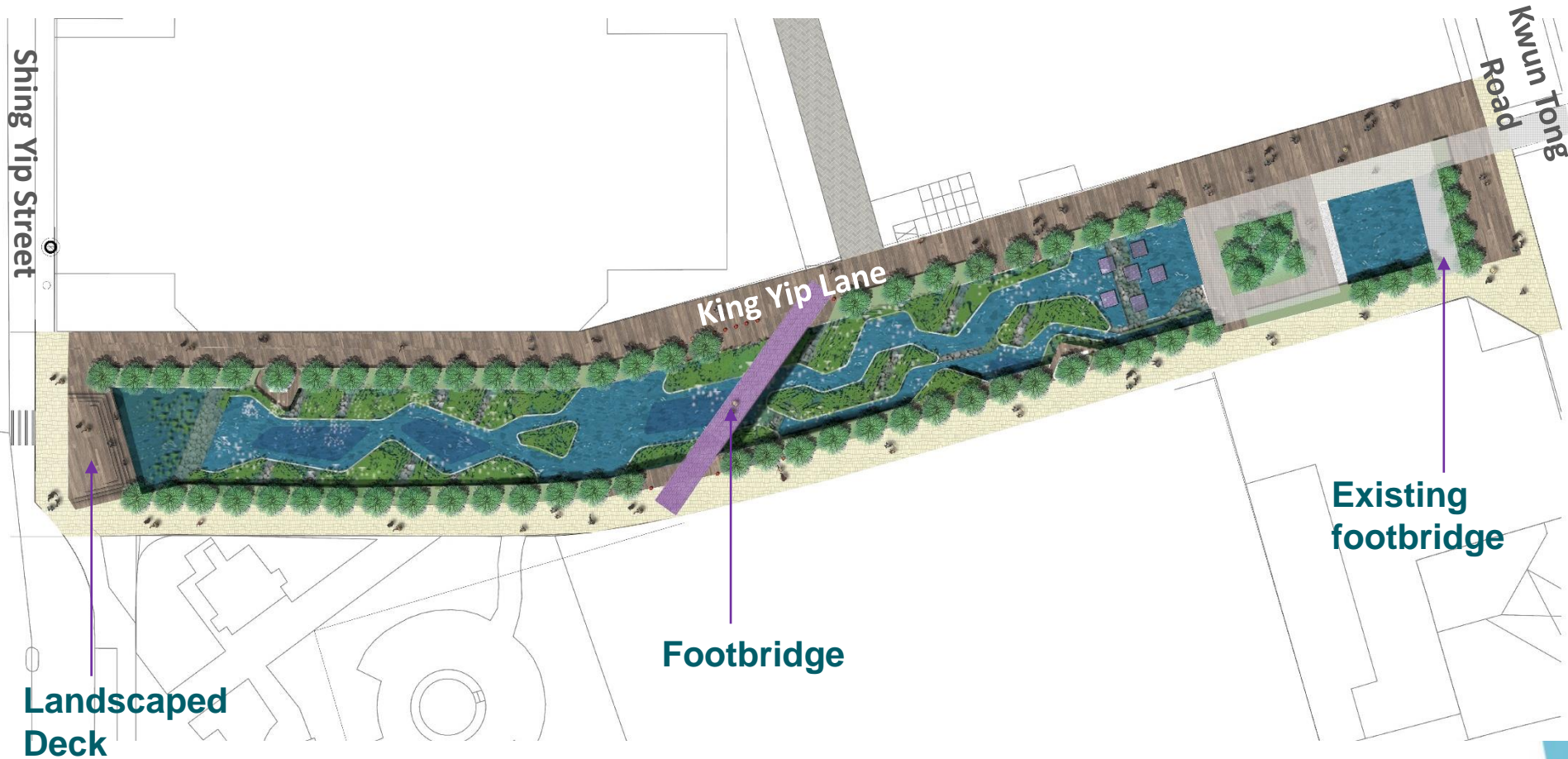
View 2



View 3

Zone B

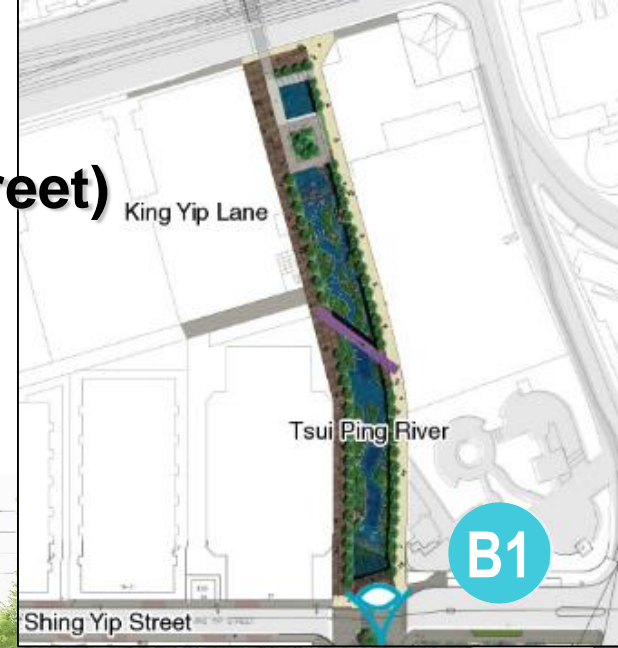
(Between Kwun Tong Road and Shing Yip Street)



Zone B

(Between Kwun Tong Road and Shing Yip Street)

Photomontage B1 (near Shing Yip Road)

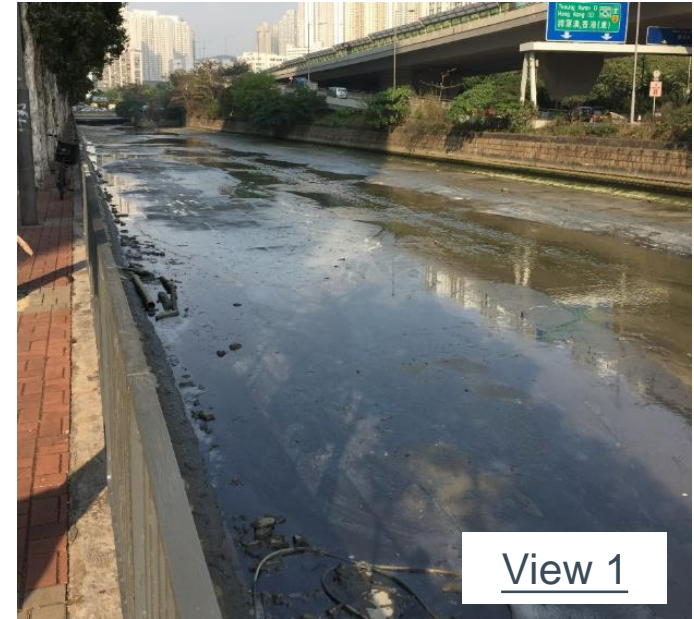


Zone C

(Between Shing Yip Street and Wai Yip Street)



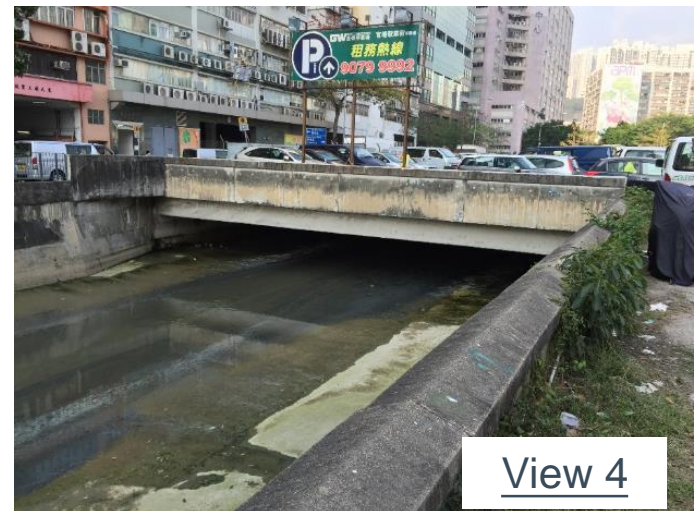
View 2



View 1



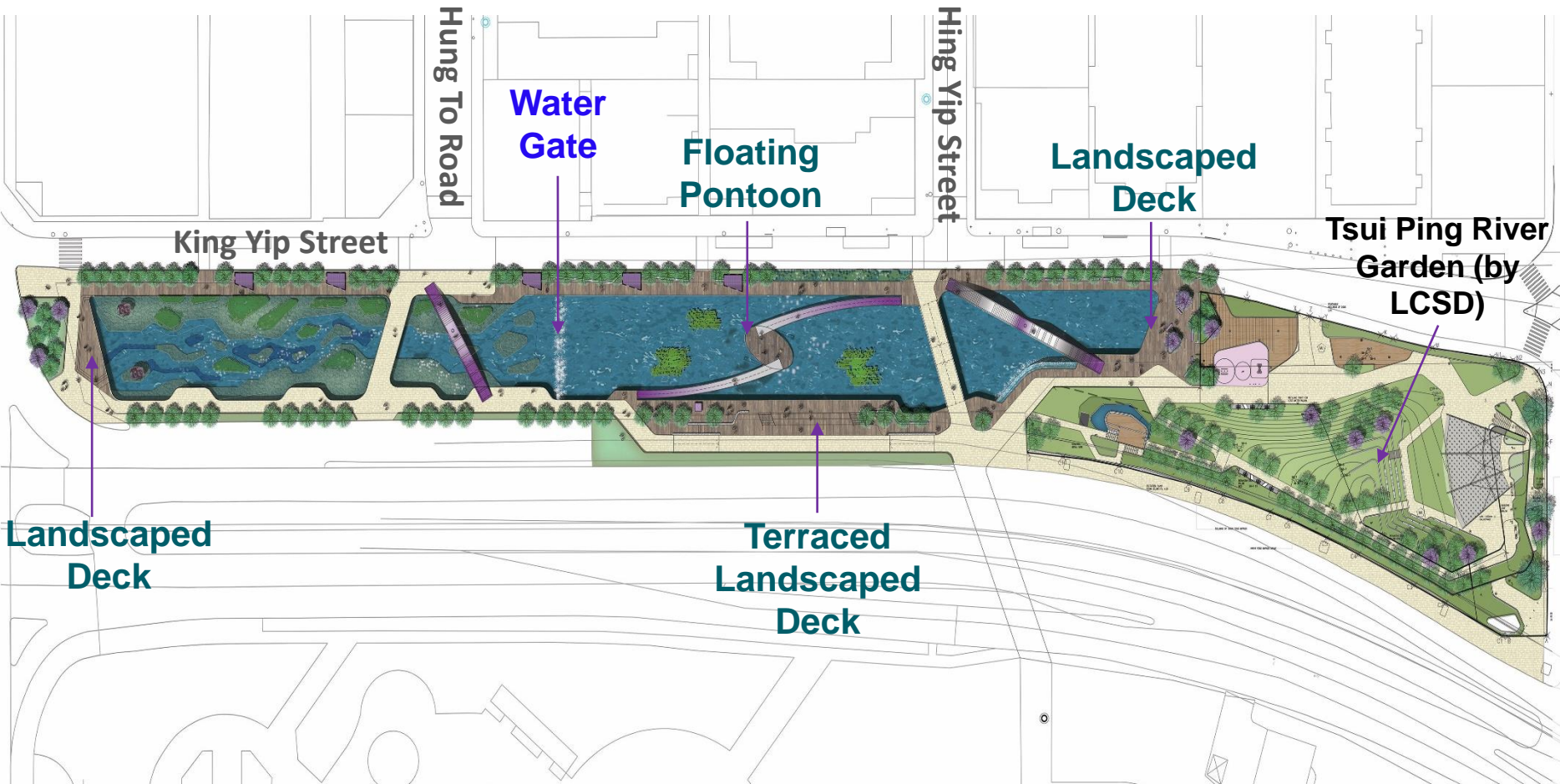
View 3



View 4

Zone C

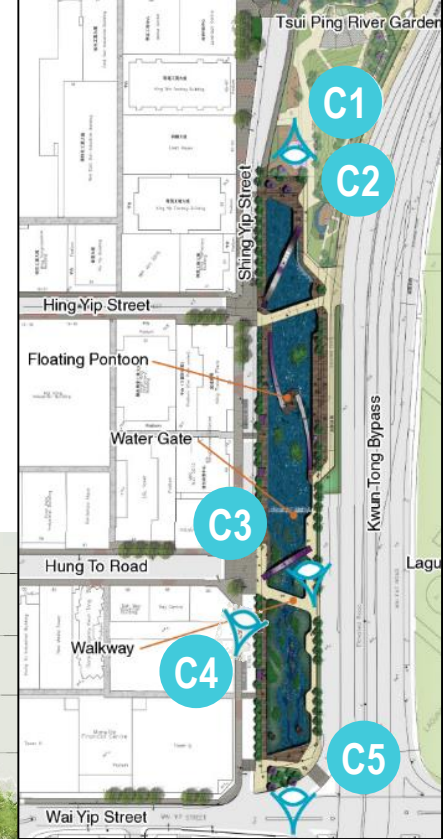
(Between Shing Yip Street and Wai Yip Street)



Zone C

(Between Shing Yip Street and Wai Yip Street)

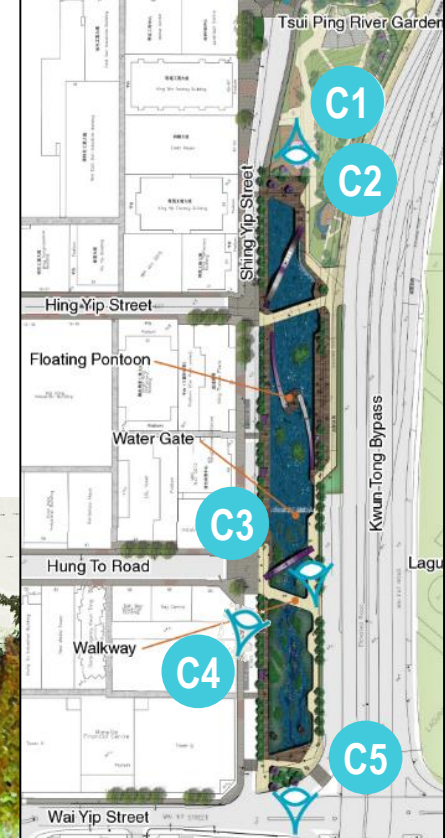
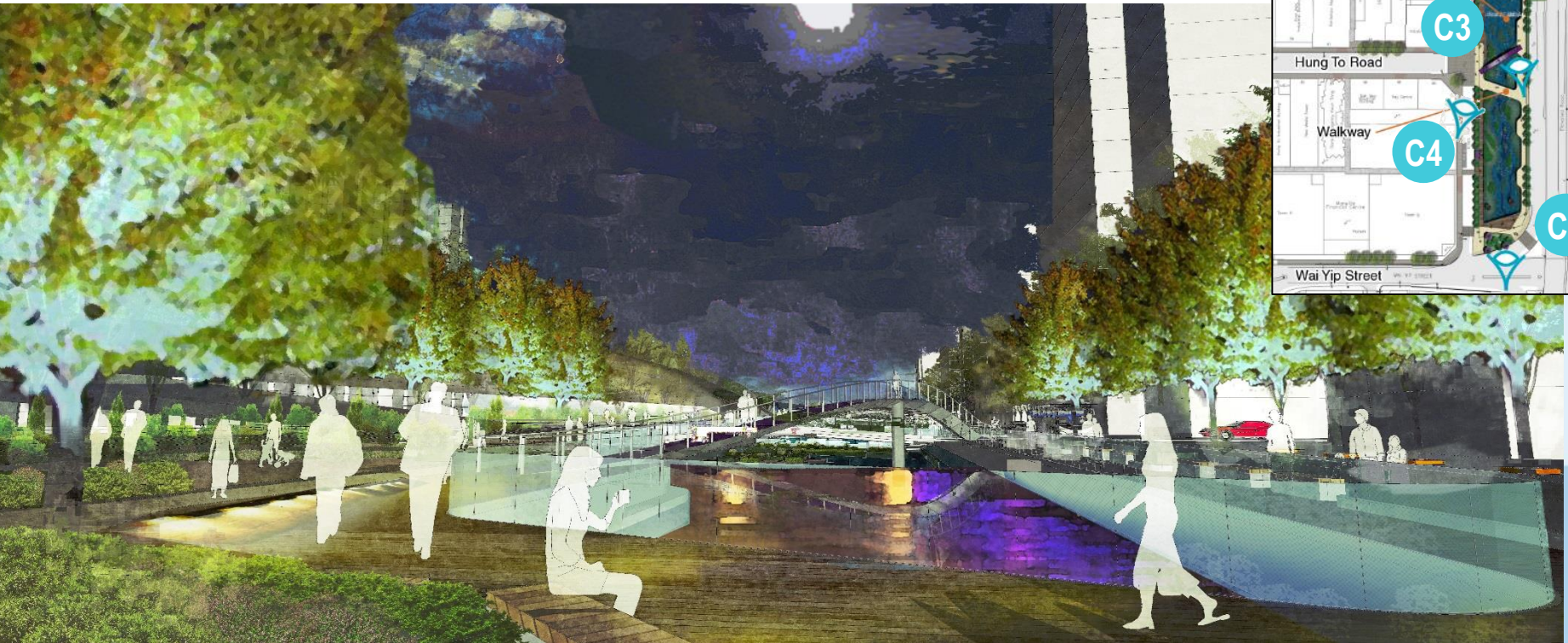
Photomontage C1 (near Tsui Ping River Garden)



Zone C

(Between Shing Yip Street and Wai Yip Street)

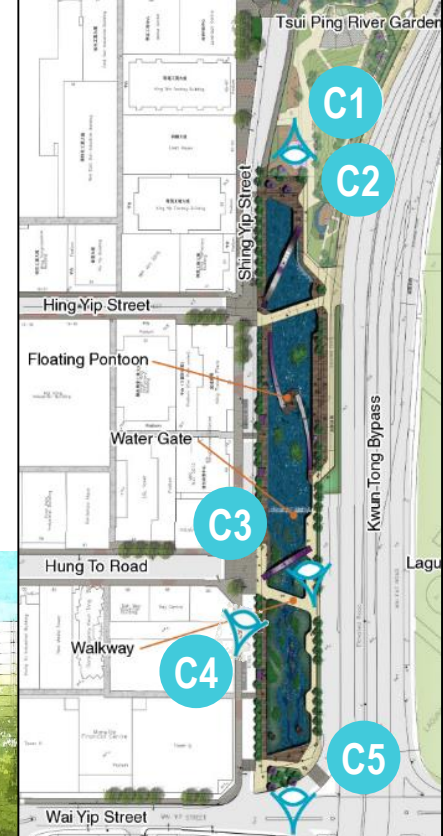
Photomontage C2 (near Tsui Ping River Garden)



Zone C

(Between Shing Yip Street and Wai Yip Street)

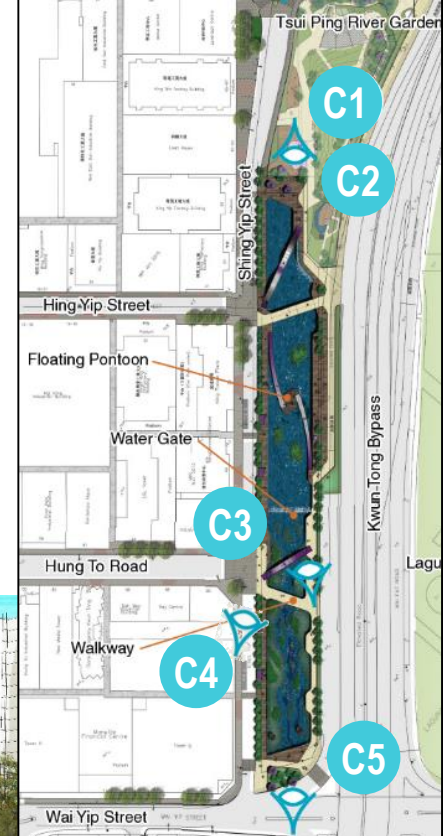
Photomontage C3 (near Hung To Road / Proposed Water Gate)



Zone C

(Between Shing Yip Street and Wai Yip Street)

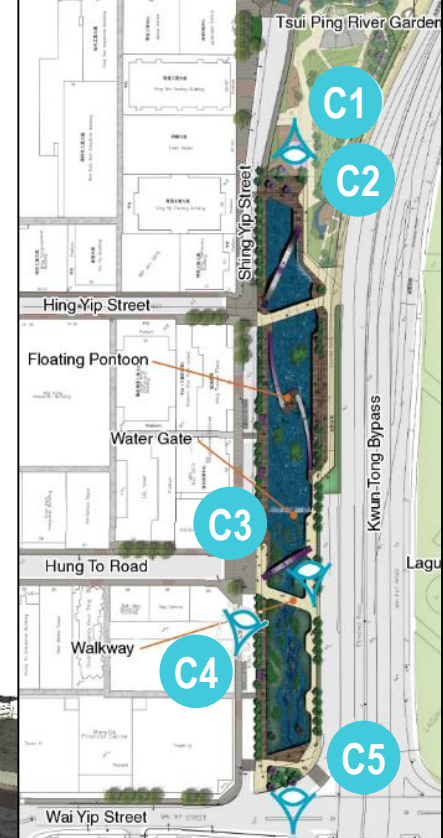
Photomontage C4 (near Hung To Road)



Zone C

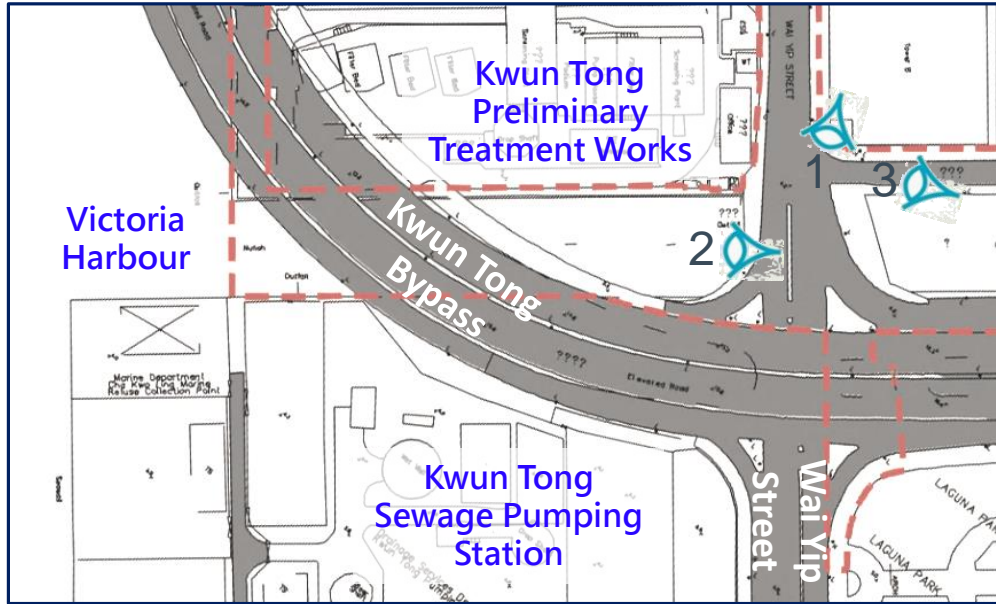
(Between Shing Yip Street and Wai Yip Street)

Photomontage C5 (near Wai Yip Street)



Zone D

(Between Wai Yip Street and Victoria Harbour)



View 1



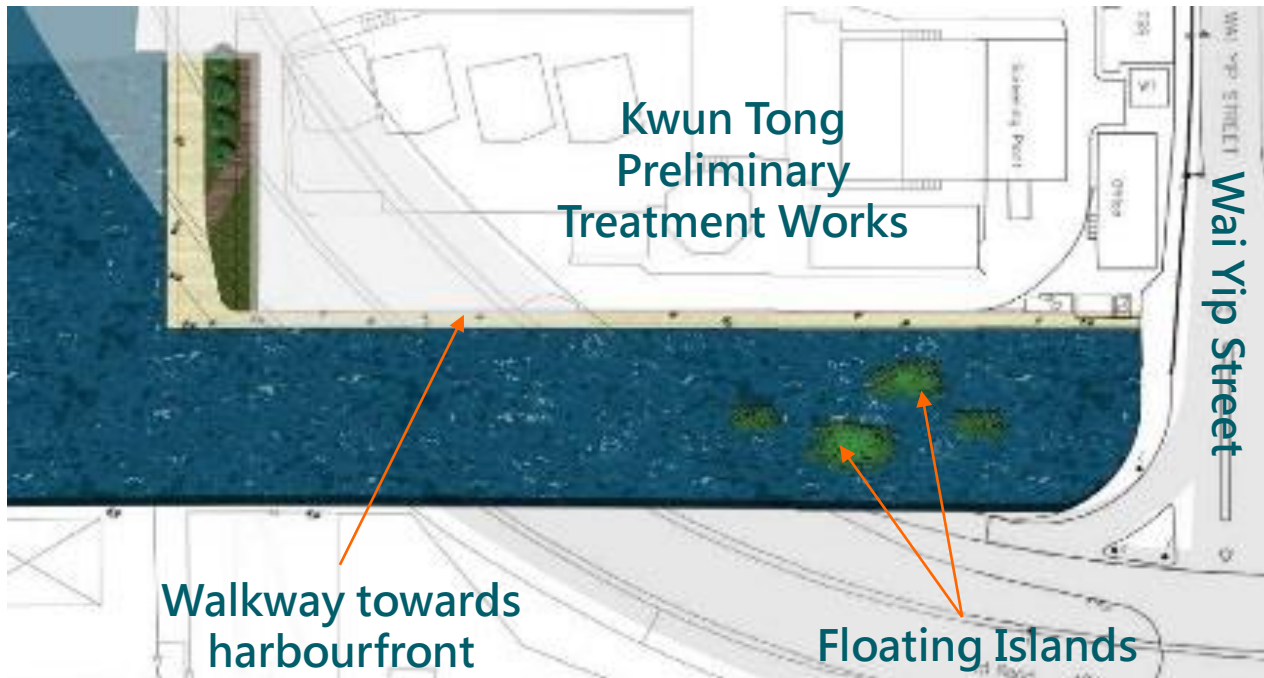
View 2



View 3

Zone D

(Between Wai Yip Street and Victoria Harbour)



Stage 1 Public Engagement

- Consultation with District Facilities Management Committee under Kwun Tong District Council (12 Jan 2017)
- Consultation with Task Force on Kai Tak Harbourfront Development under Harbourfront Commission (13 Jan 2017)
- Roving Exhibition (16 Jan to 5 Mar 2017)
 - ◆ KEEO Exhibition Hall
 - ◆ Kwun Tong MTR Station
 - ◆ Kwun Tong Swimming Pool
 - ◆ Laguna Park
 - ◆ Shing Yip Street Rest Garden
 - ◆ Kwun Tong Promenade
 - ◆ Tsui Ping Commercial Complex
 - ◆ Phase 1 Laguna City Clubhouse
 - ◆ E-Plaza
- Community Workshop (11 Feb 2017)
- Project Website : www.tsuipingriver.hk

Study Progress

- The Project is now in the investigation phase
- The Stage 1 Public Engagement activities have just begun
- Detailed design is anticipated to commence within 2017

**Members' views on the Project
are welcome.**

Thank you!