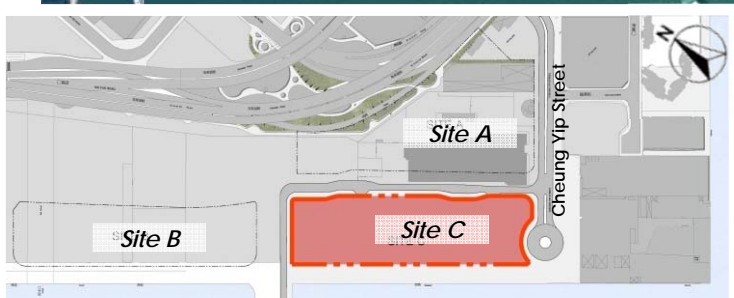
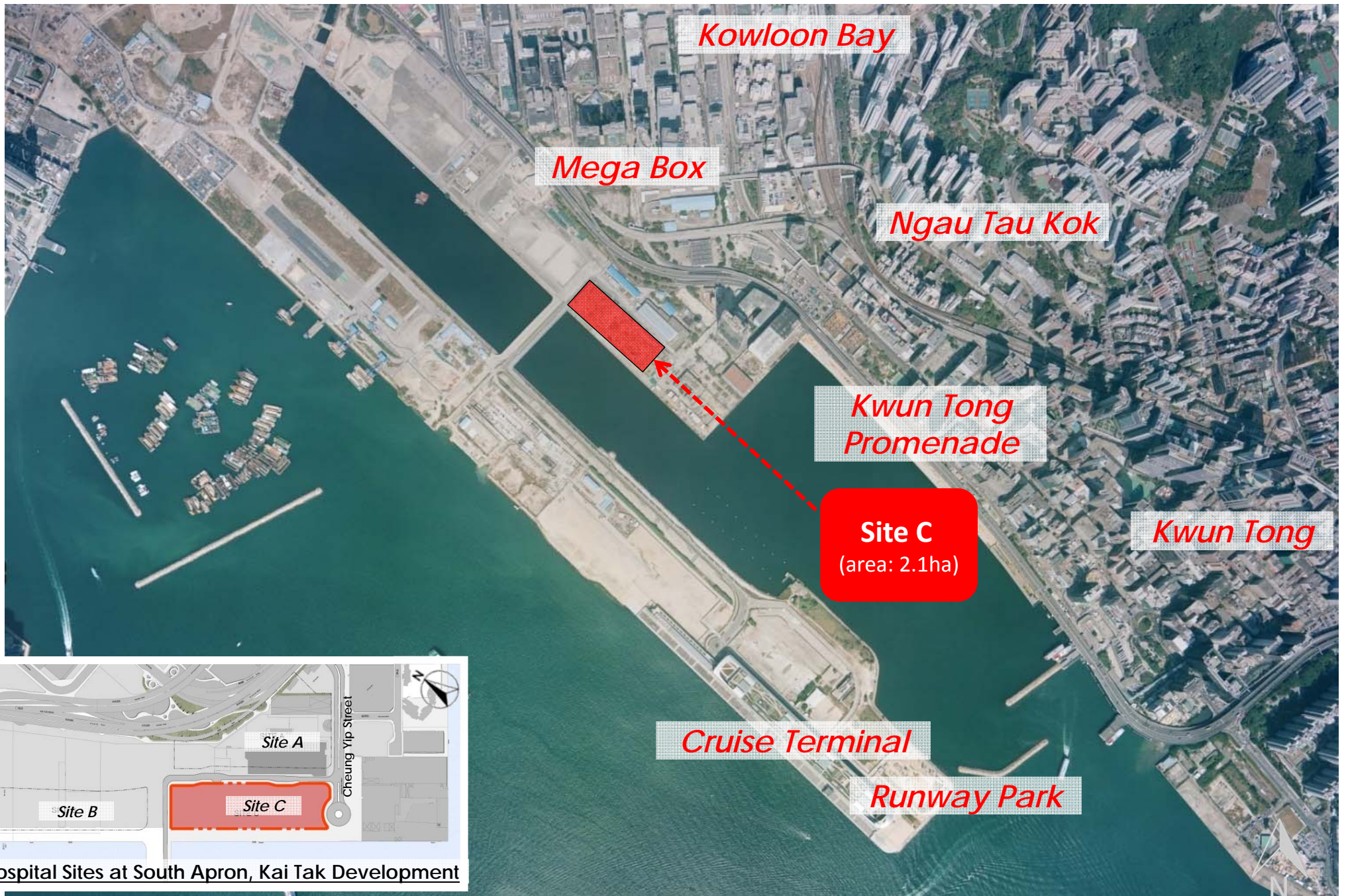




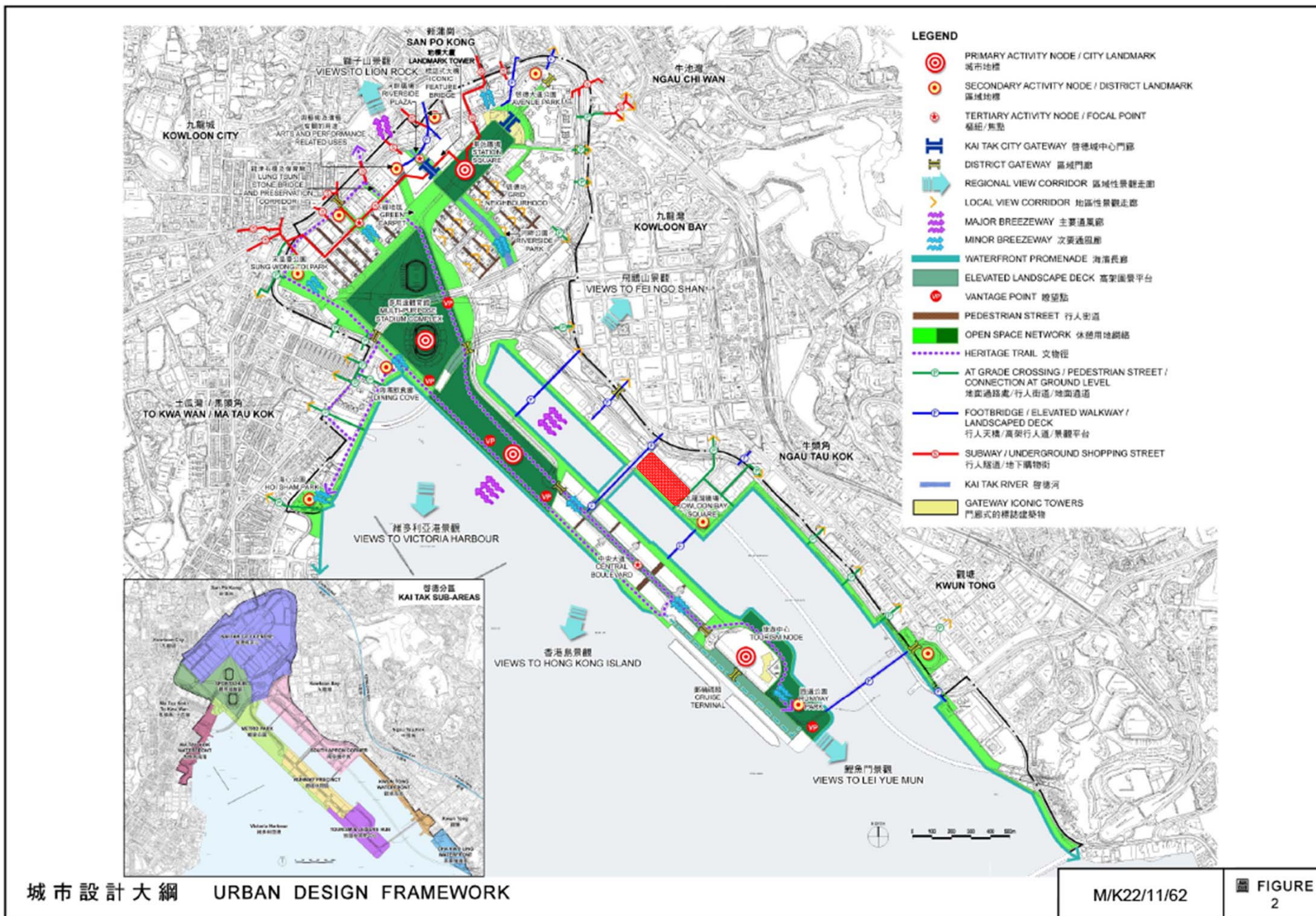
Presentation to Task Force of Kai Tak Harbourfront Development





Hospital Sites at South Apron, Kai Tak Development

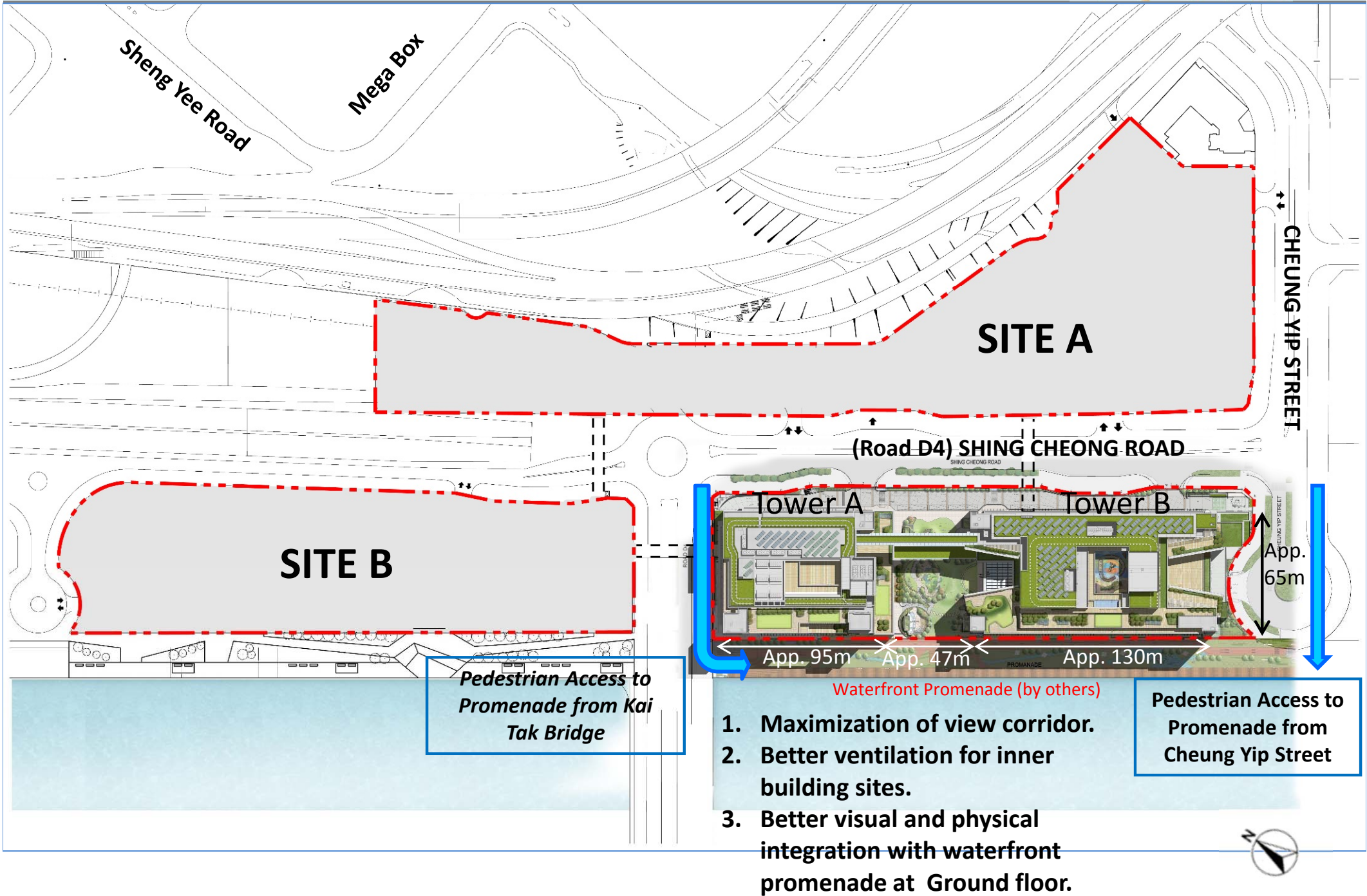
Site Location



(顯示初步構思，只供參考) (FOR ILLUSTRATION PURPOSE ONLY)



Pedestrian Network



Hospital Site – Master Layout Plan

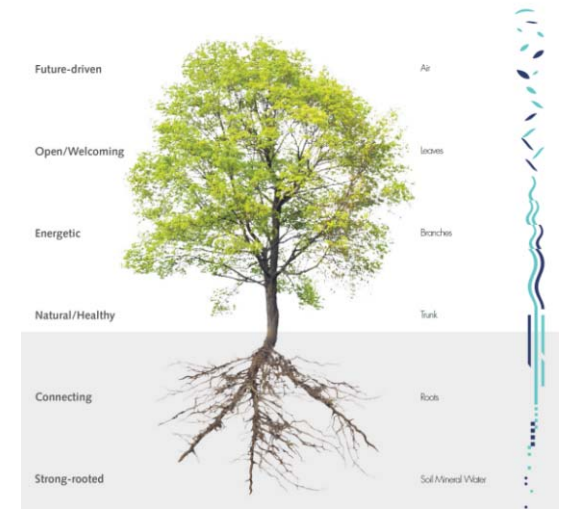


Master Layout Roof Plan



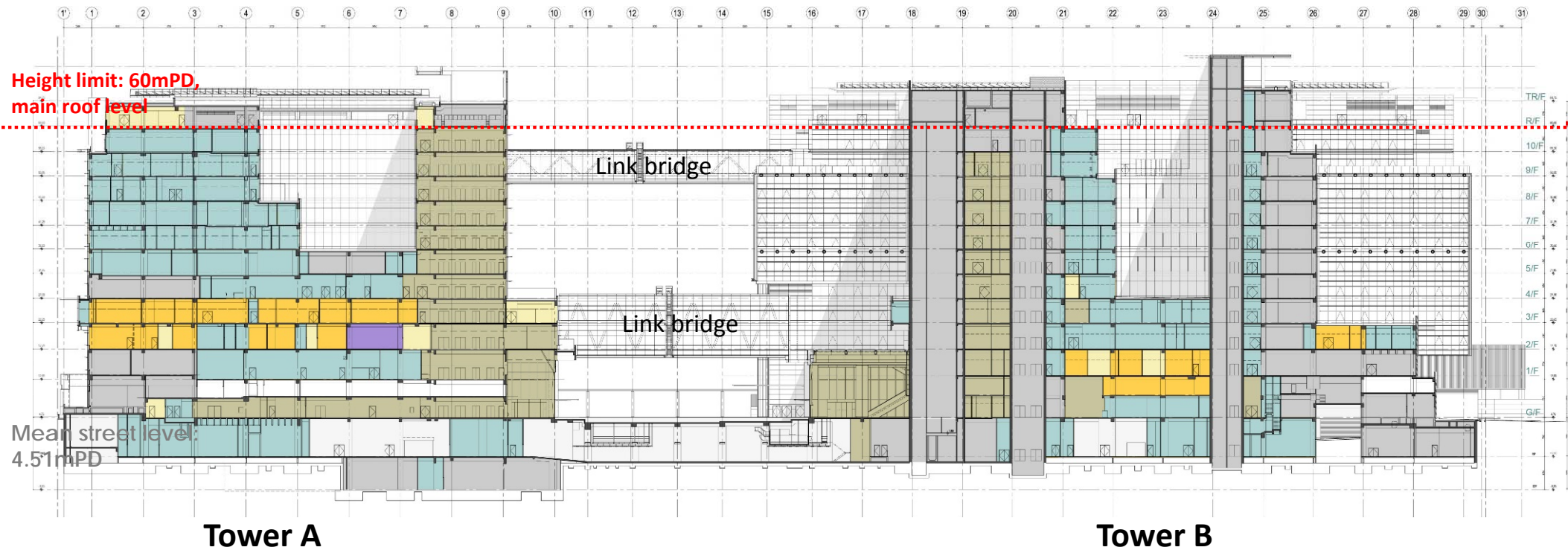
Urban Design Framework

- Maximization of transparency and connectivity at Ground Floor
- Podium-free design
- Connectivity to waterfront promenade (to be implemented under other project)
- Tie-in with overall branding of Kai Tak Public Creatives
- Maximization of greenery





Vertical Zoning of Major Departments / Facilities



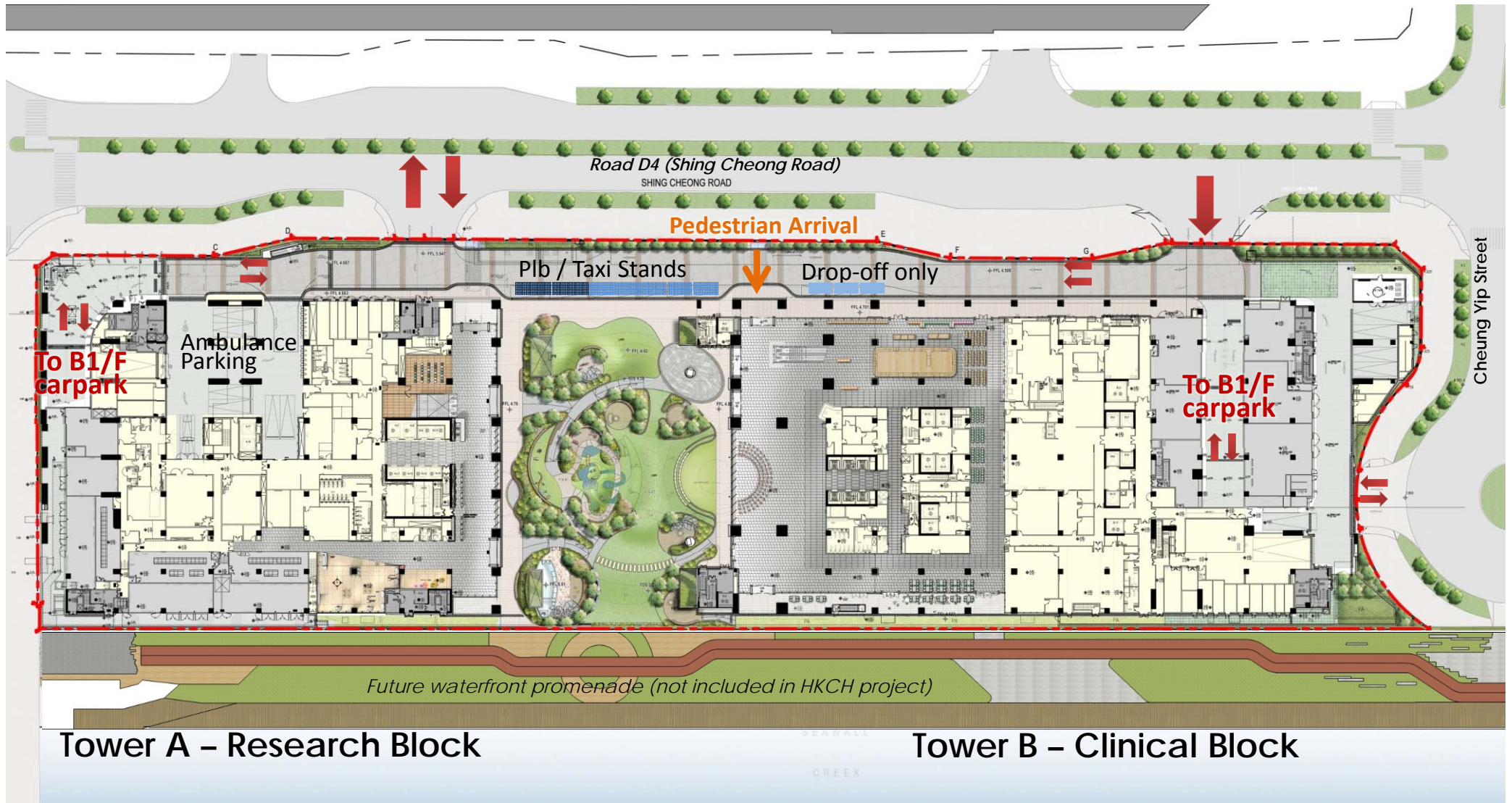
- 10/F:** Administration Offices
- 9/F:** Research Facilities
- 8/F:** Core Lab & Supporting Services
- 7/F:** Clinical Laboratory Services
- 6/F:** Clinical Laboratory Services
- 5/F:** Hospital Data Rooms
- 4/F:** O.T. Support
- 3/F:** Operating Theatres (O.T.)
- 2/F:** Allied Health
- 1/F:** Education & Training
- G/F:** Building Amenities / Community / Mortuary

- LEGEND
- PUBLIC AREA
 - CLINICAL AREA
 - STAFF AREA
 - PLANT ROOM
 - LANDSCAPE GARDEN
 - FUNCTIONAL AREA
 - RESTRICTED ACCESS AREA
 - VEHICULAR AREA

- 10/F:** Staff Accommodation
- 9/F:** Medical Staff Offices
- 8/F:** Private Ward
- 7/F:** General Ward
- 6/F:** General Ward
- 5/F:** Oncology Ward / BMT Unit
- 4/F:** NICU / Day Chemo
- 3/F:** PICU / Cardiology
- 2/F:** Ambulatory Care Centre
- 1/F:** Specialist Out-patient Clinic
- G/F:** Pharmacy / Shroff / Central Waiting / Cafe



Traffic Arrangement – Arrival and Ground Floor Traffic





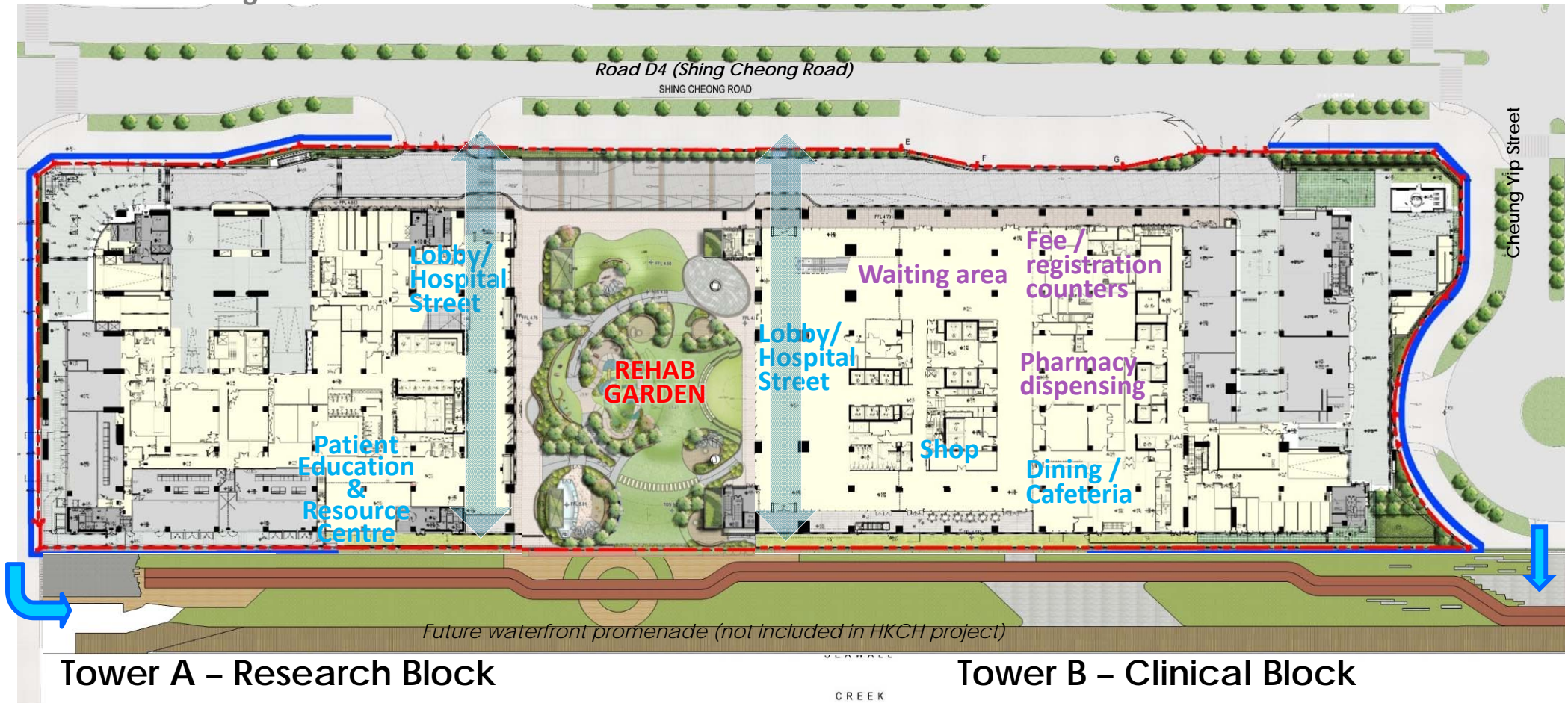
View from Shing Cheong Road





Enhanced Public Accessibility & Connectivity on G/F

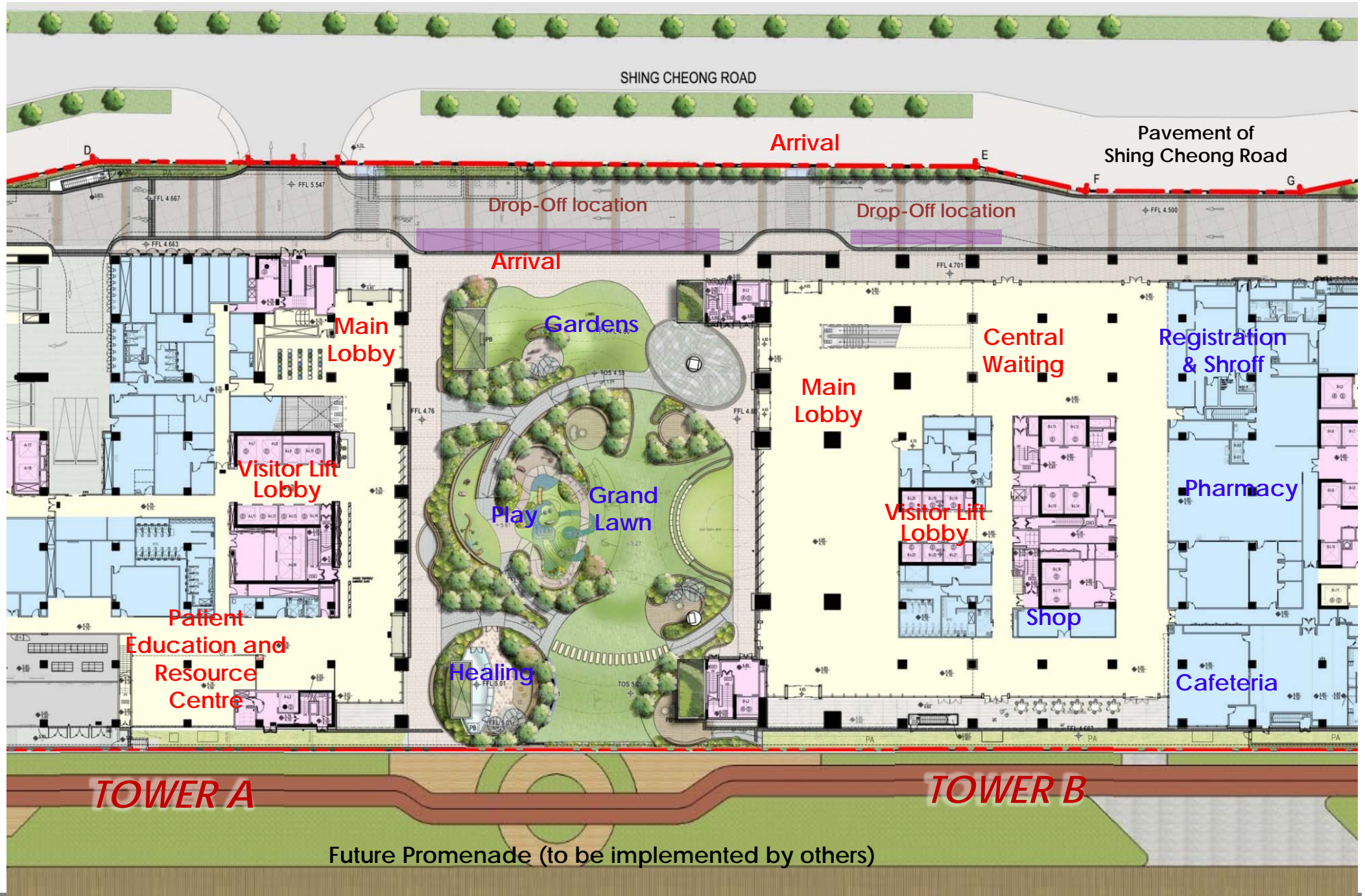
- Public Lobby / Hospital Street
- Integrated Rehab garden
- Patient Education & Resource Centre, Cafeteria, Shop
- Visual Linkage with the waterfront



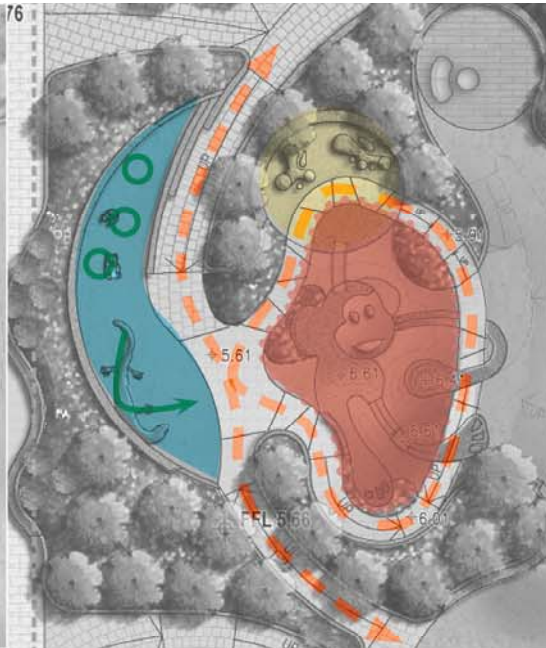
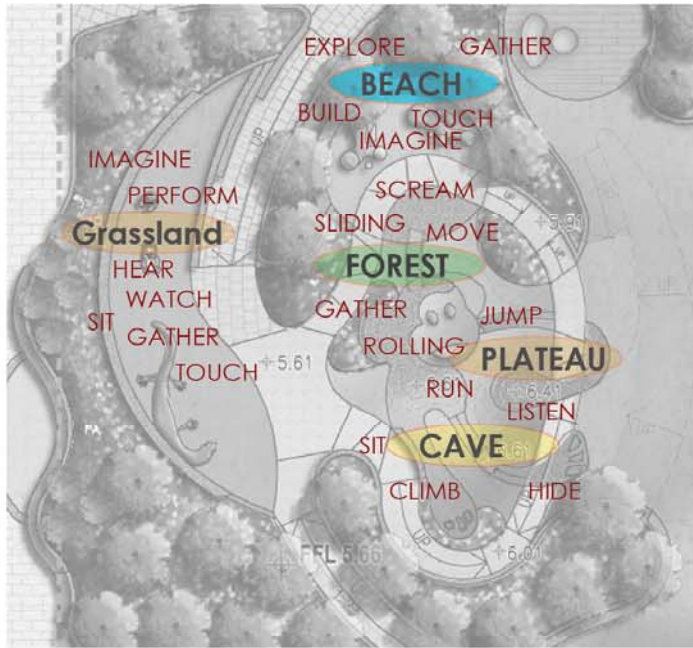
Tower A – Research Block

Tower B – Clinical Block

 Access to promenade from public pavement



Ground Floor - Programmes



- Barrier Free Accessible Loop
- Active Zone
- Sculptural Seat Object
- Sensory Zone
- Passive Zone

Maximum overall height of feature ≤ 1 metre



HABITAT THEME



Monkey (Landform Playscape)

- Active and Adventure Lover
- Energetic with Cheerful
- Happy symbolic icon
- Focal Point of Play Area

Panda (Sculpture)

- Cultural Uniqueness
- Friendly for Hug and Interaction
- Nurturing icon
- Passive and calming symbol

Lizard (Sculptural Seat Object)

- Reveal the unique natural habitat of Central Garden with the spread of colorful life and its sensory appearance, and invite for interactive group playing, it possesses prominent characters like:
 - Protective Camouflage
 - Fight undesirable pest and rodents
 - Sensory Textural Skin
 - Regeneration quality

Sensory Material Finish:

- Color gradients' stimulation
- Textural patterns for touch
- Smooth and undulating body form for level exploration and intimate interaction

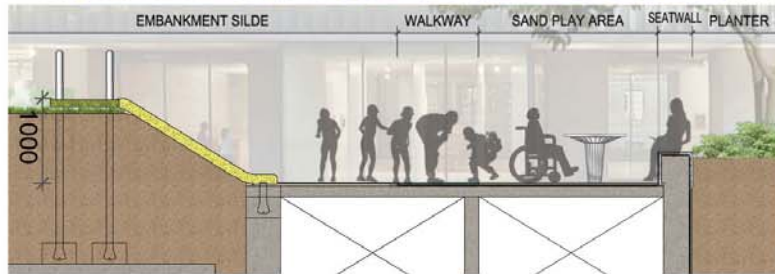


NATURAL PLAYScape - ADVENTURE JUNGLE

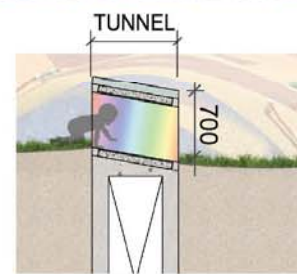


LEGEND:

- 1. Sand Play Area
- 2. Embankment Slide
- 3. EPDM Landform and Earthmound
- 4. Colorful Tunnel
- 5. Wheelchair Adventure Loop
- 6. Sculpture Seat Wall (Lizard)
- 7. Lawn of Sculptures (Panda)



SECTION AA



SECTION BB



SEAT WALL

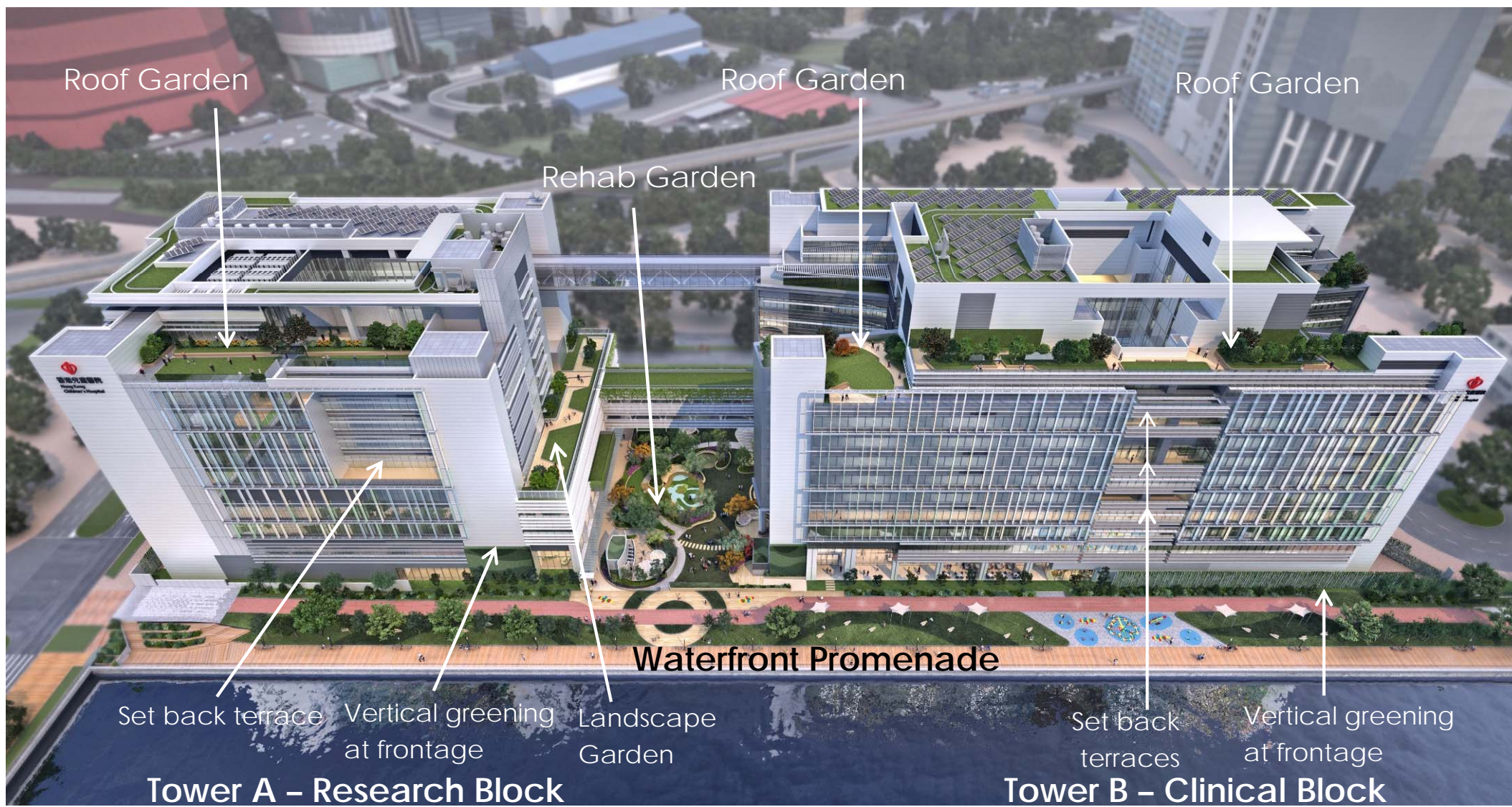


Bird's eye view



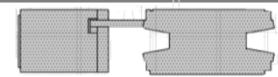
Green Building Features

- Overall Greenery Coverage – 40%
- First Hospital using District Cooling
- Platinum Rating of Provisional Assessment under Beam Plus (V1.2) of HKGBC



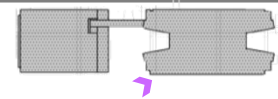


Visual Continuity



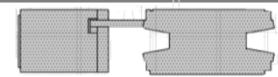


Relationship to the promenade



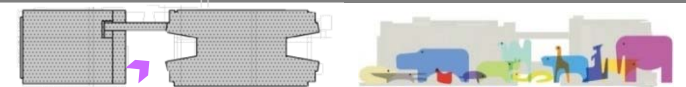


Along the waterfront promenade



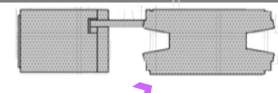


Rehab Garden



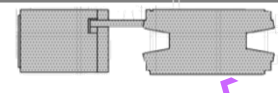


Along the waterfront promenade





Along the waterfront promenade





Incorporation of Public Creatives Elements



Boundary Screen/Fence Wall

Signage at Entrance Portal

Boundary Screen/Fence Wall



Energy Swirl



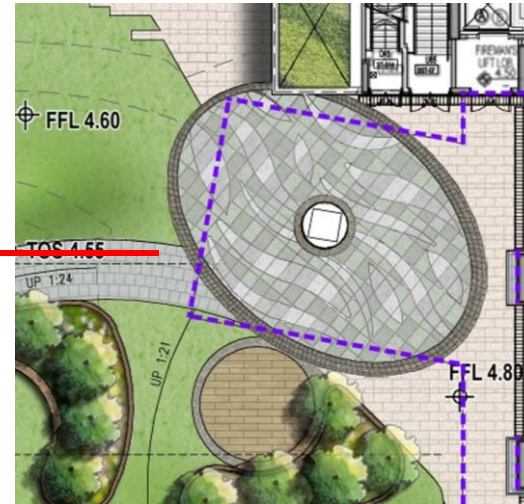
DNA Bar

Kai Tak Public Creatives Elements

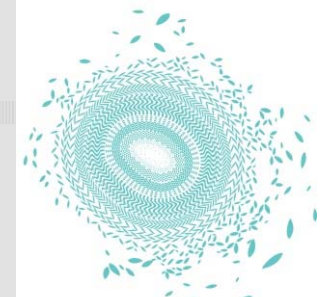




Landscape Furniture



Feature Paving Pattern



Energy Swirl



DNA Bar

Incorporation of Public Creatives Elements





- END -

Hong Kong Children's Hospital
A Habitat for Life
