

HARBOURFRONT COMMISSION CONSULTATION

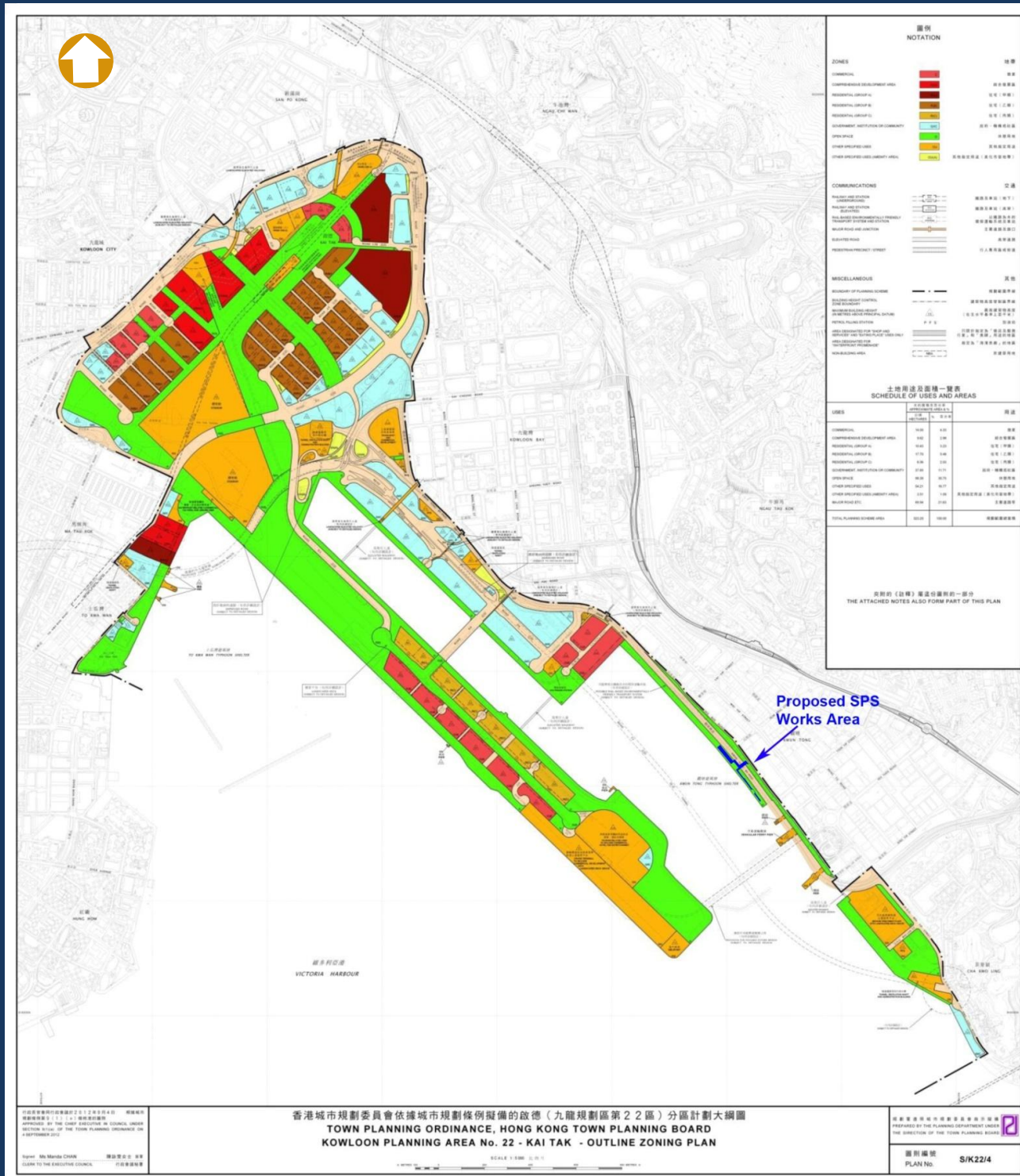
SIGNATURE PROJECT SCHEME (KWUN TONG DISTRICT) CONSTRUCTION OF MUSIC FOUNTAINS AT KWUN TONG PROMENADE



1.0 SITE ANALYSIS

1.1 SITE CONTEXT

Site Location



- Site area is approximately **3,300m²**
- Zoned as **“Open Space”**
- Part of the site is underneath the existing Kwun Tong By-pass
- Site levels between +4.34mPD and +4.70mPD

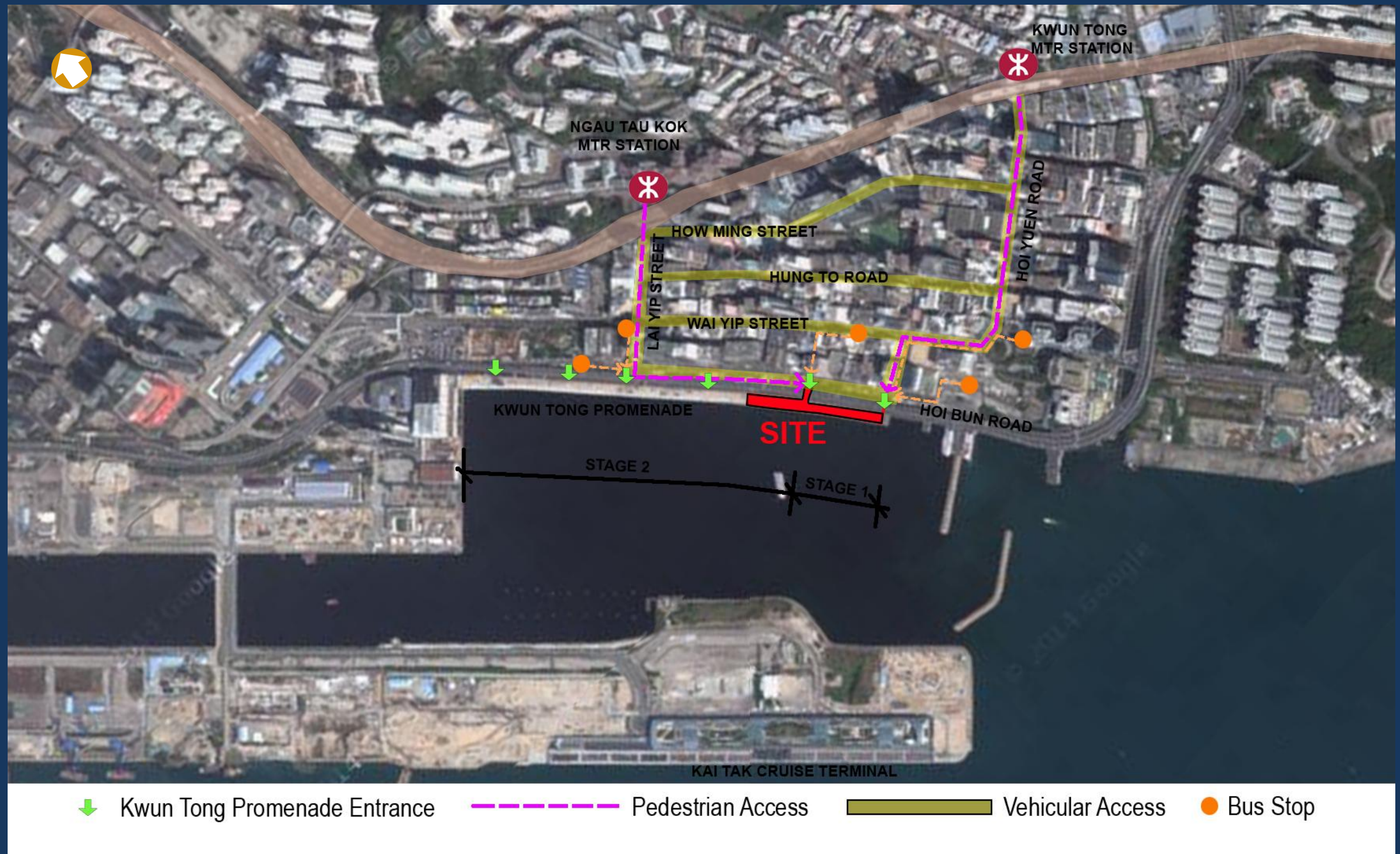


Outline Zoning Plan of Kai Tak (Kowloon Planning Area No. 22)

Aerial Photo Showing the Proposed Project Site

1.1 SITE CONTEXT

Transportation and Circulation Around the Site



Transportation and Circulation Diagram of Kwun Tong Promenade

1.2 SITE CONSTRAINTS

(a) Drainage Reserve

- No structure shall be constructed and free access shall be made.

(b) Existing Kwun Tong By-pass

- Active recreation uses with naked fire are not allowed within the 10m zone of the By-pass.
- 2m clearance from the structures of the By-pass.

(c) Engineering Conditions

- No structure shall exceed 10.5m above the mean formation level of the land.
- Maximum buildable area shall not exceed 20%.
- Minimum 35% greening ratio shall be maintained.

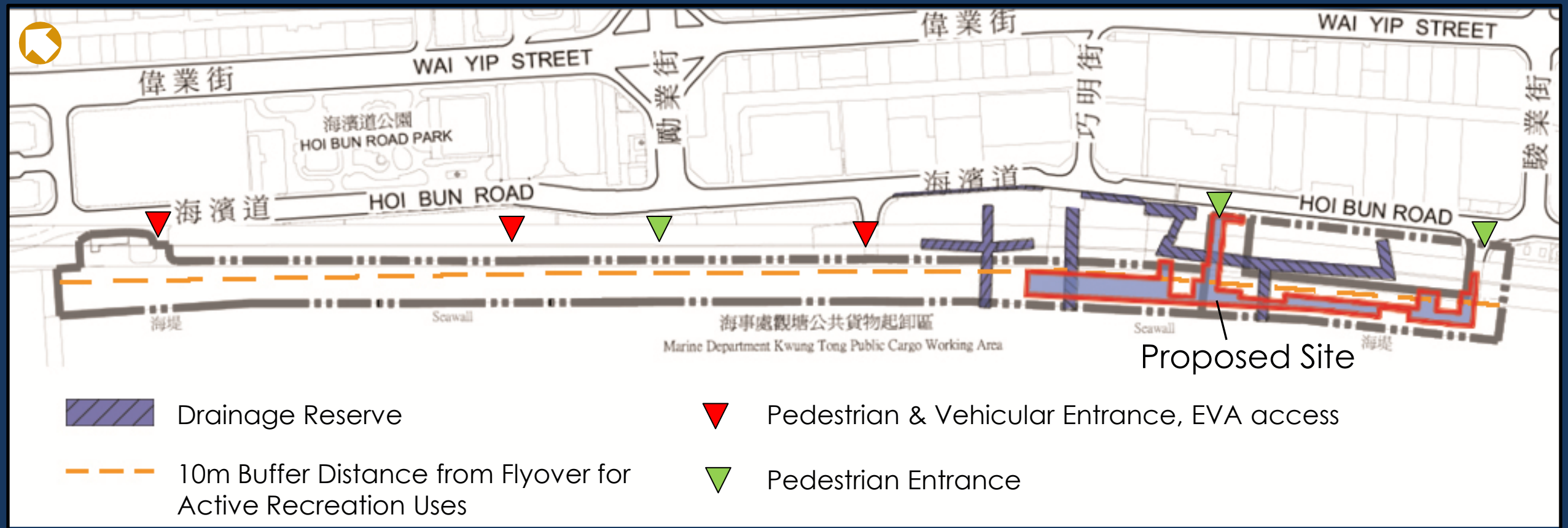


Diagram of Site Constraints of Kwun Tong Promenade

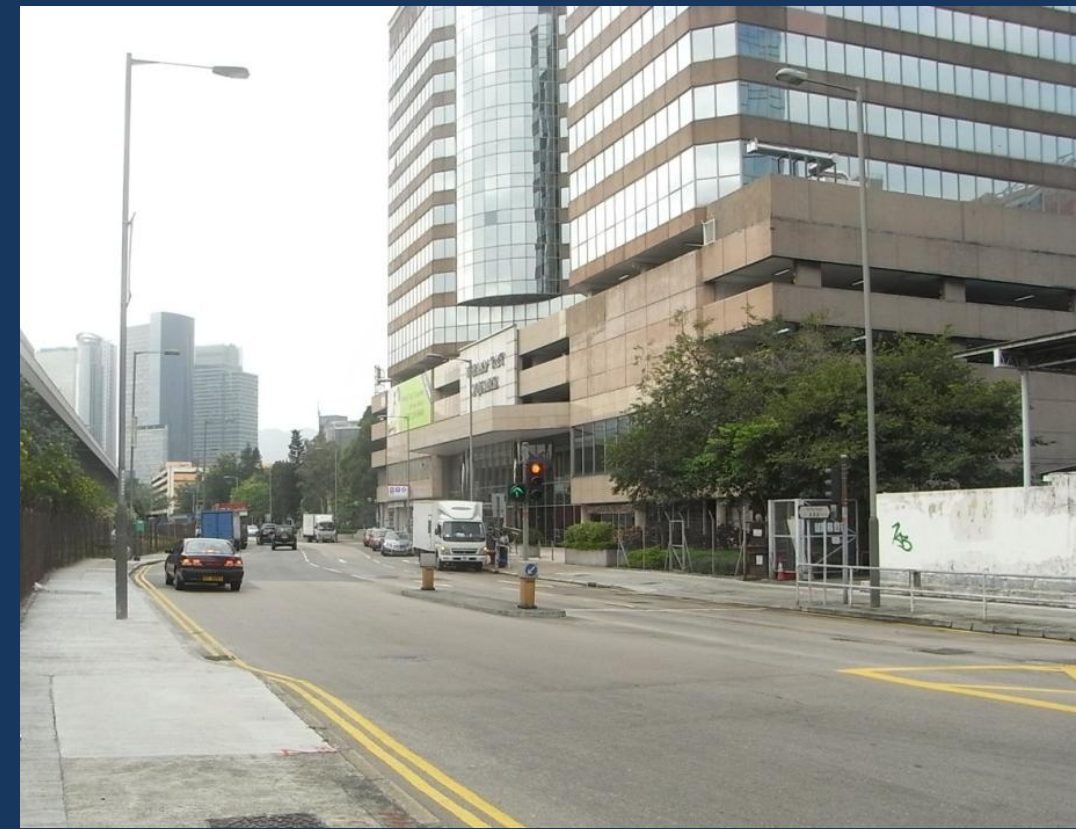
1.3 SITE PHOTOS

Stage II
(Will Complete in Dec 14)

Stage I
(Completed in Dec 09)



View from Kwun Tong Typhoon Shelter



View of Hoi Bun Road Along the Site



View at Kwun Tong Promenade Stage 1



View at Kwun Tong Promenade Stage 2

2.0 ARCHITECTURAL DESIGN

2.1 MASTER LAYOUT PLAN



Music Fountains

90m X 15m

- Performance Music Fountain
- Dry Fountain Play Area
- Plaza with Jumping Jets
- Landscape Area
- Pathway

Filtration Plant Room

5mx7m

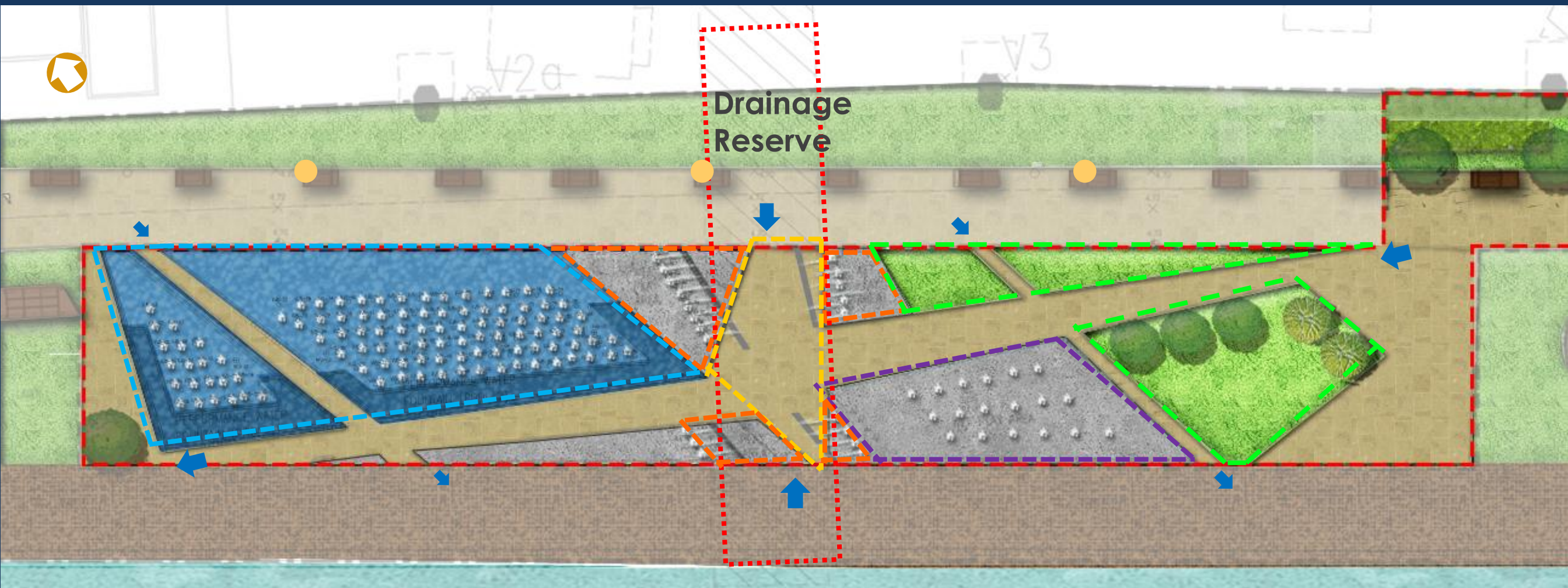
Water Feature with Dynamic Lighting

Feature Lighting

Dynamic Lighting , Musical Feature and Special Effect

Master Layout Plan of Music Fountains at Kwun Tong Promenade

2.2 MUSIC FOUNTAINS



- Plaza [Yellow dashed box] Dry Fountain Play Area [Purple dashed box]
- Circulation [Blue arrow] Landscape [Green dashed box]
- Performance Music Fountain [Blue dashed box] Colour Projector [Yellow circle]
- Jumping Jets [Orange dashed box]

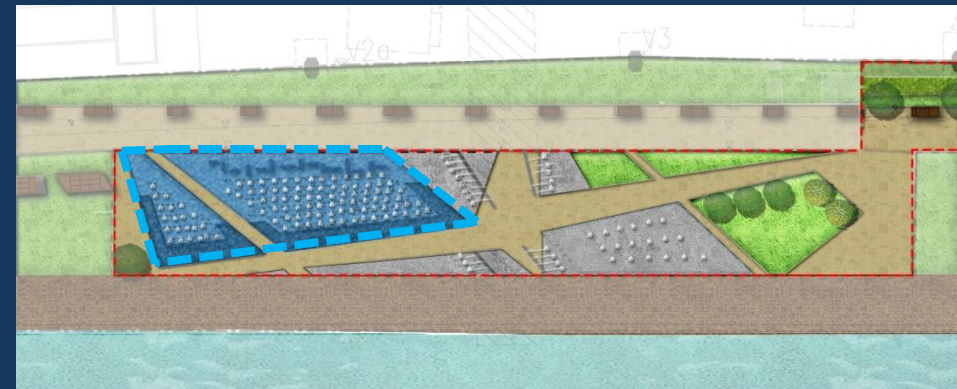
Full Scale Fountain	Area (sqm)	Percentage of Total Area (%)
Plaza and Circulation	505	36
Performance Music Fountain	400	29
Jumping Jets	120	9
Dry Fountain Play Area	147	10
Landscape	220	16
Total	1392	100

Layout Plan of Music Fountains

2.3 PERFORMANCE MUSIC FOUNTAIN

Performance Music Fountain

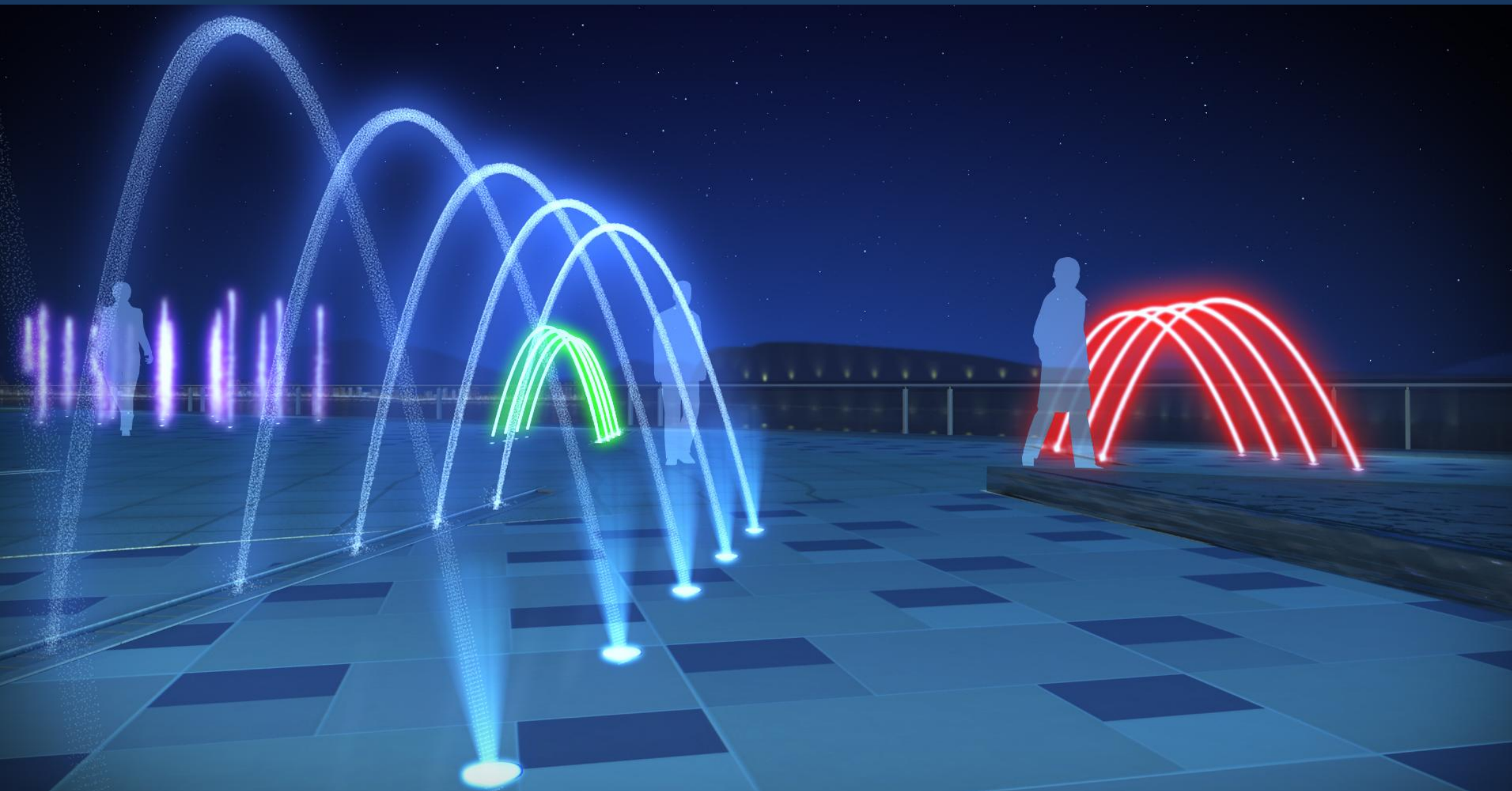
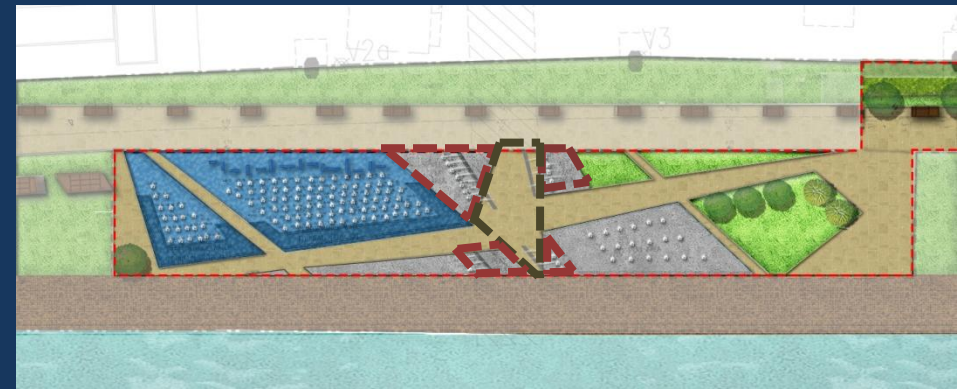
- A two-level stepped fountain
- Water jets maximum heights from 5m to 8m
- Day time: water jets operate at lower heights
- Night time: water jets operate at higher heights



2.4 PLAZA WITH JUMPING JETS

Plaza With Jumping Jets

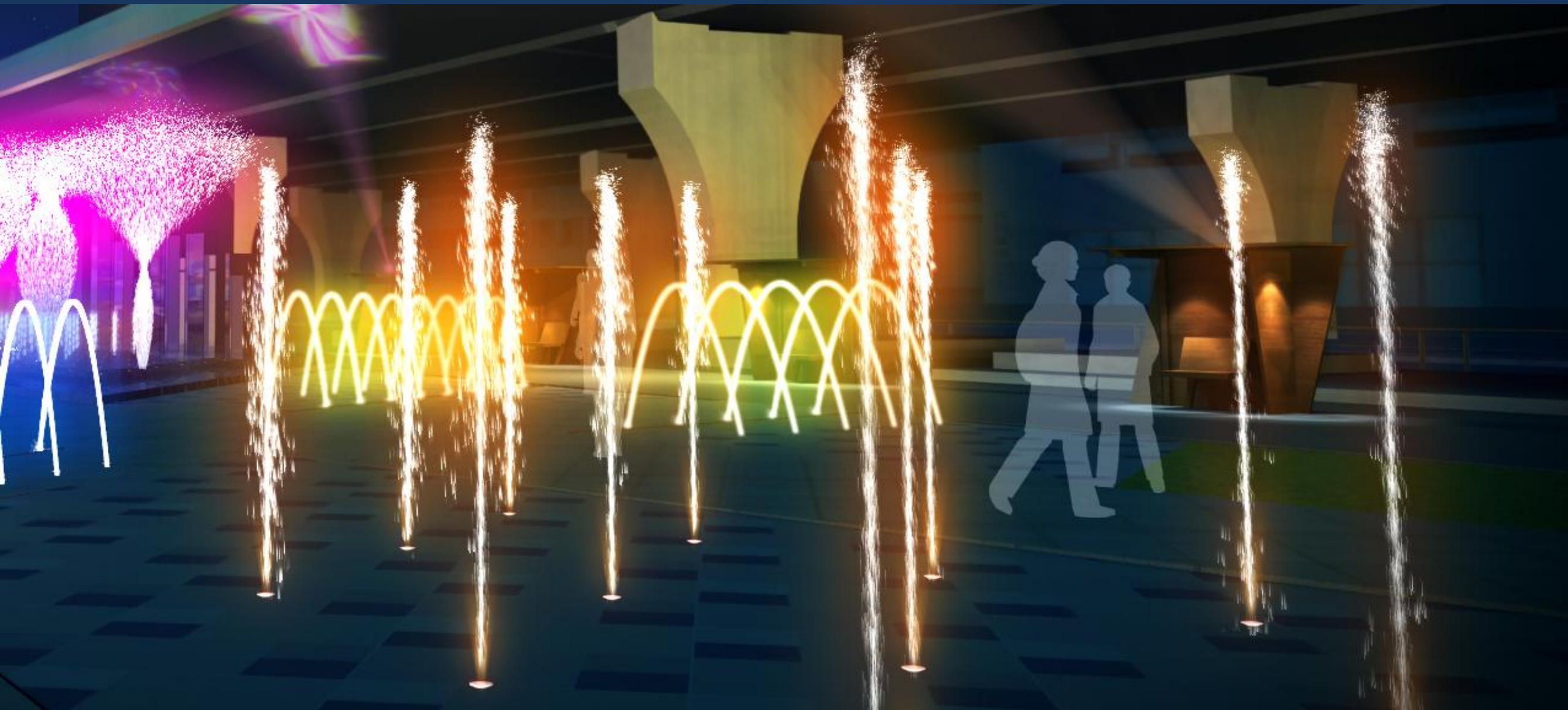
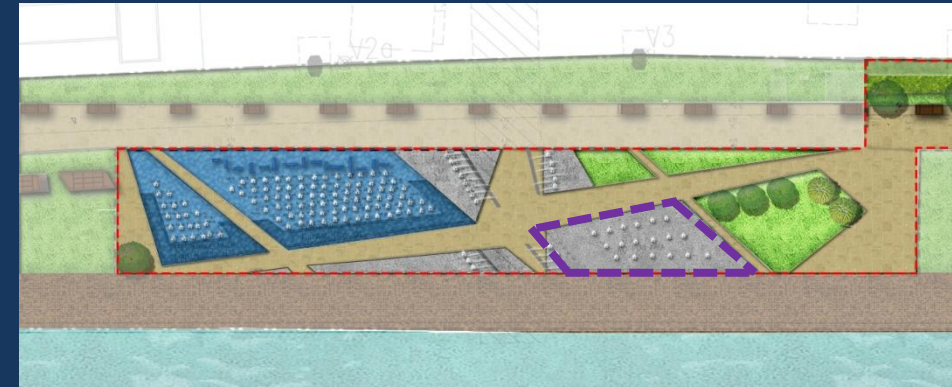
- The central plaza is located at the Drainage Reserve area
- Jumping jets are installed on both sides of the plaza



2.5 DRY FOUNTAIN PLAY AREA

Dry Fountain Play Area

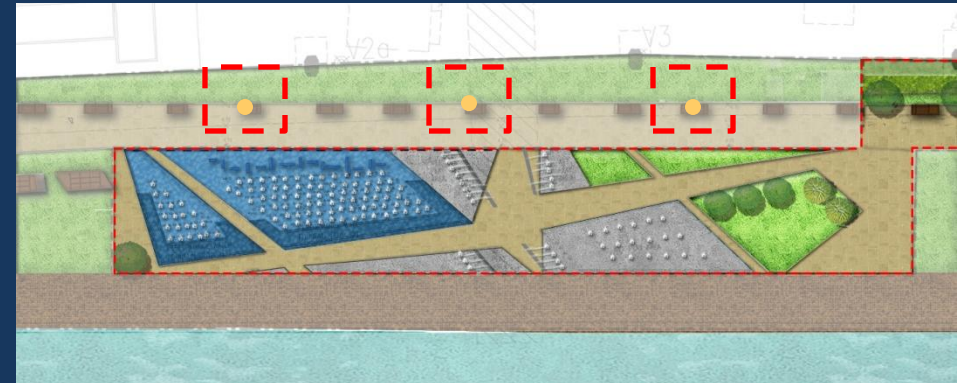
- Interactive play area designed with nonslip surfaces
- Vertical water jets operate at maximum 2m height
- Water jets are lighted up with dynamic lightings at night



2.6 COLOUR PROJECTOR

Colour Projector

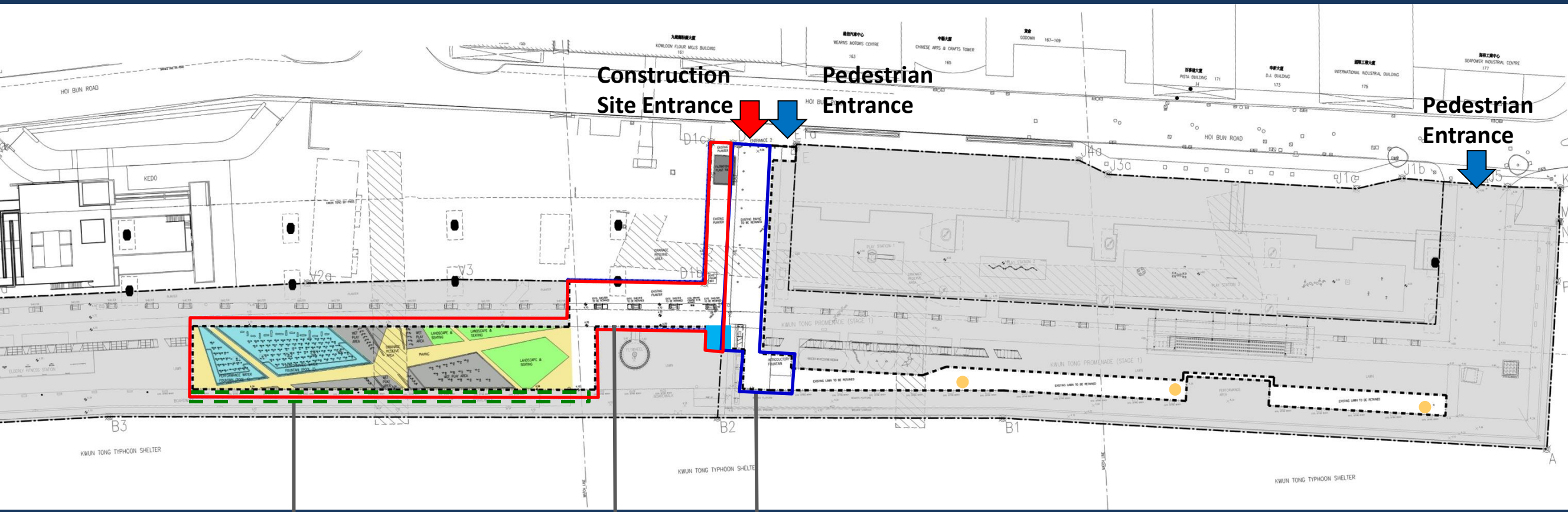
- Project animated lighting onto the underside of the flyover structure above the fountains



2.7 HOARDING EXTENT

Kwun Tong Promenade Stage 2

Kwun Tong Promenade Stage 1



Part of the boardwalk will be temporarily closed during construction.

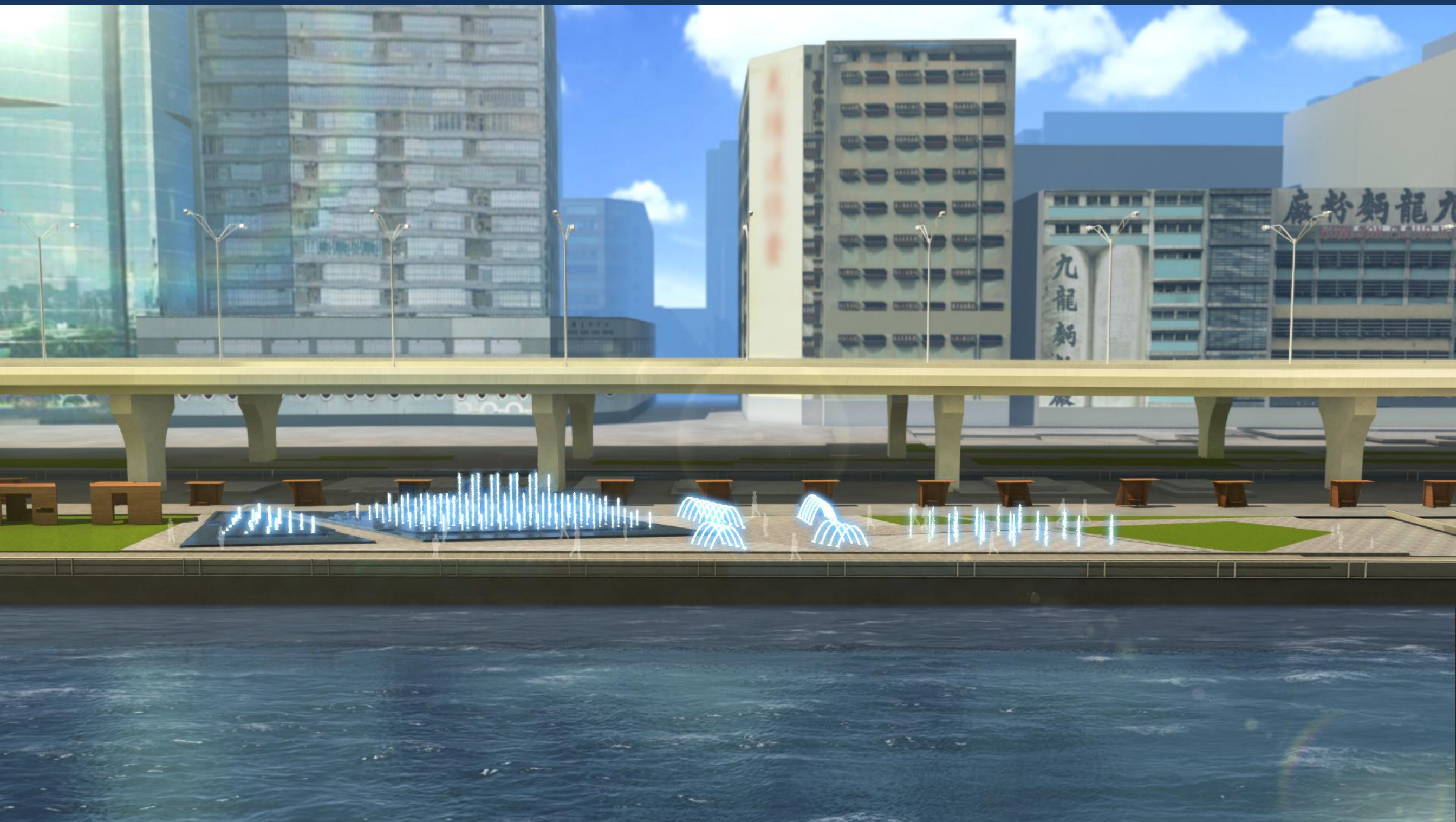
Stage 2 Hoarding

Stage 1 Hoarding

Duration of Construction: Dec 2015 – May 2017

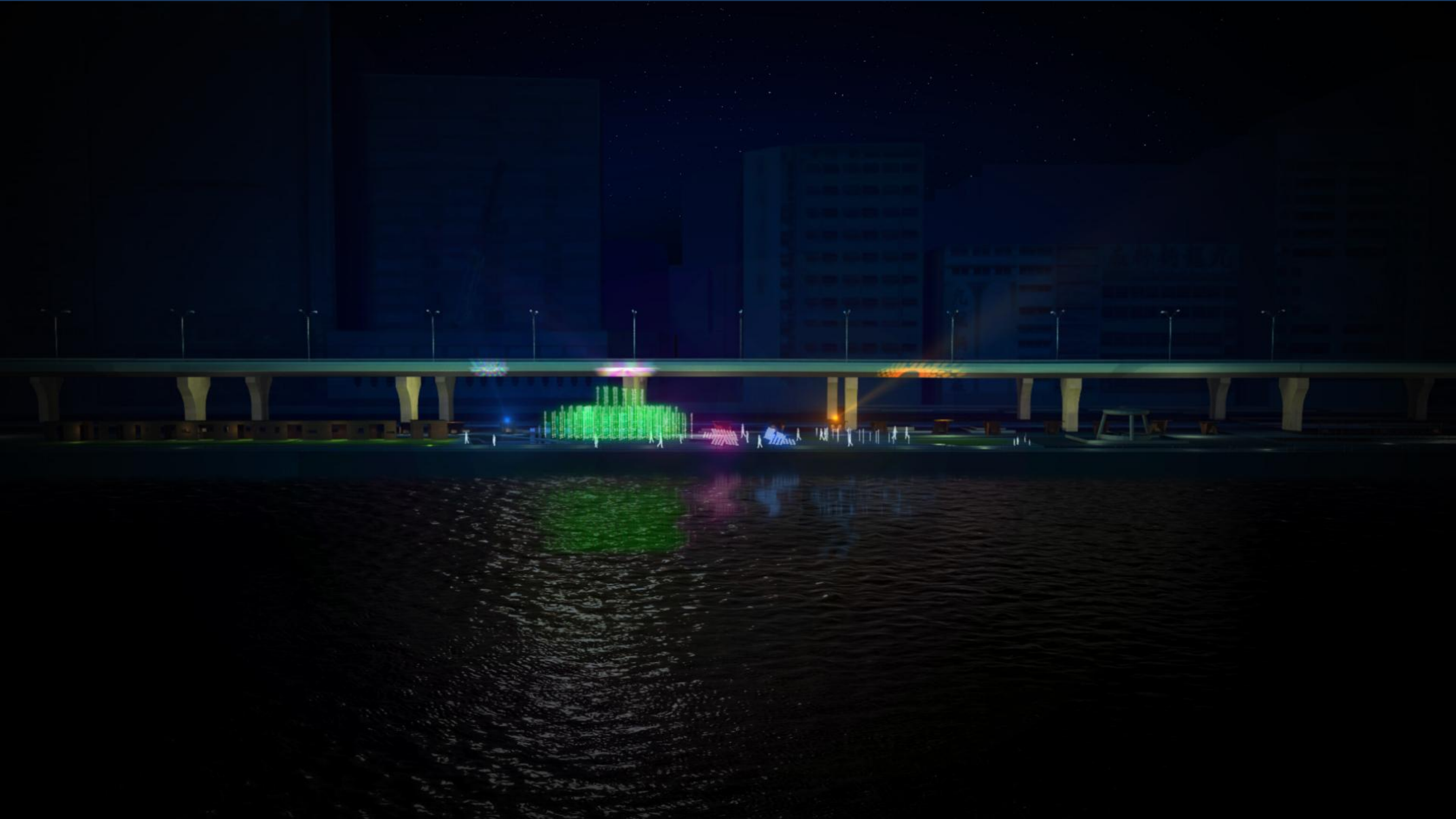
2.8 PERSPECTIVE VIEWS

Overall Perspective View of Music Fountains



2.8 PERSPECTIVE VIEWS

Night View from Kai Tak Cruise Terminal



THANK YOU