



# **Task Force on Kai Tak Harbourfront Development**

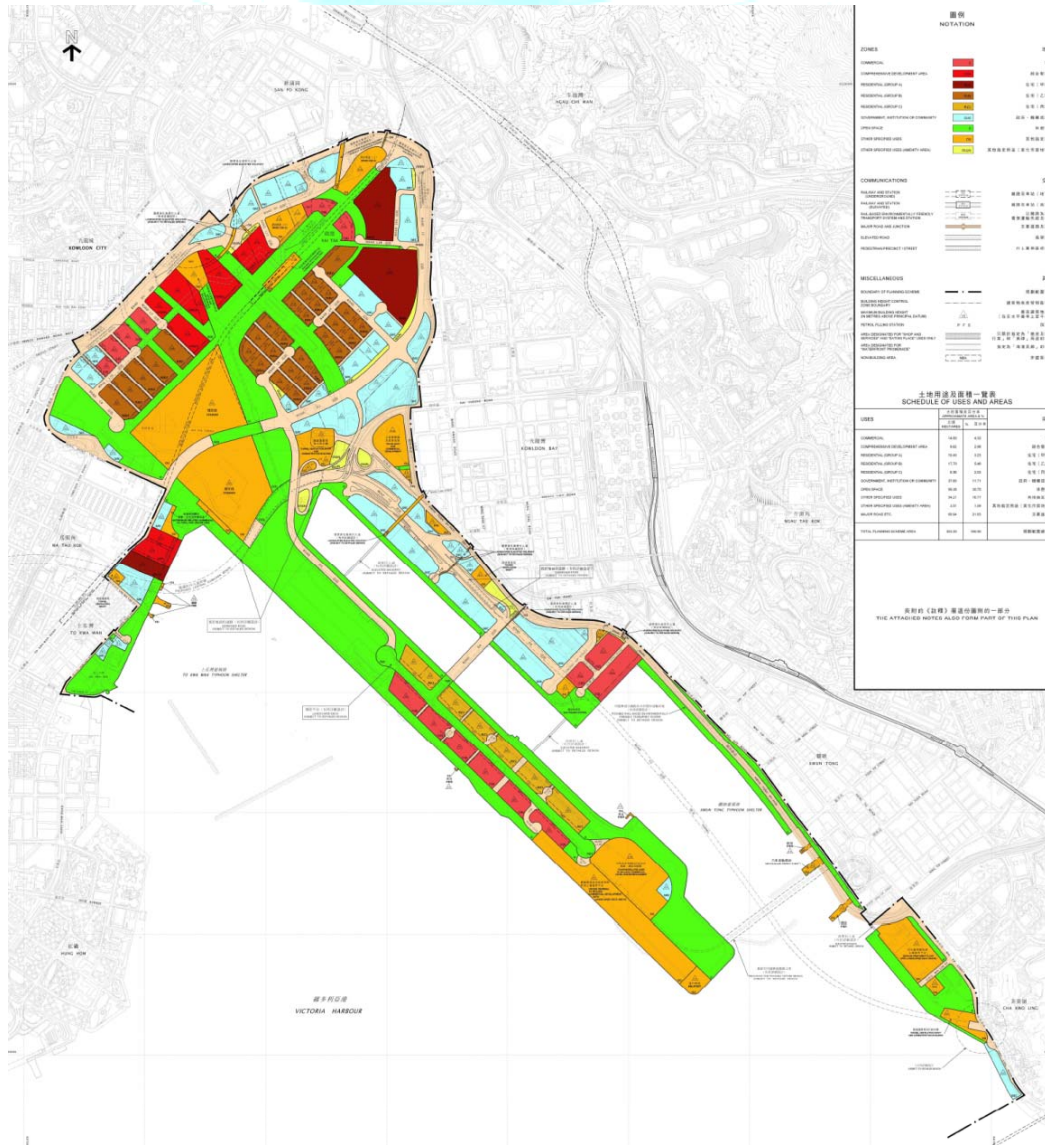
## **Kai Tak Development Progress Report as of August 2014**

**(Paper No. TFKT/07/2014)**

# Kai Tak OZP No. S/K22/4 (September 2012)

## Planning Vision

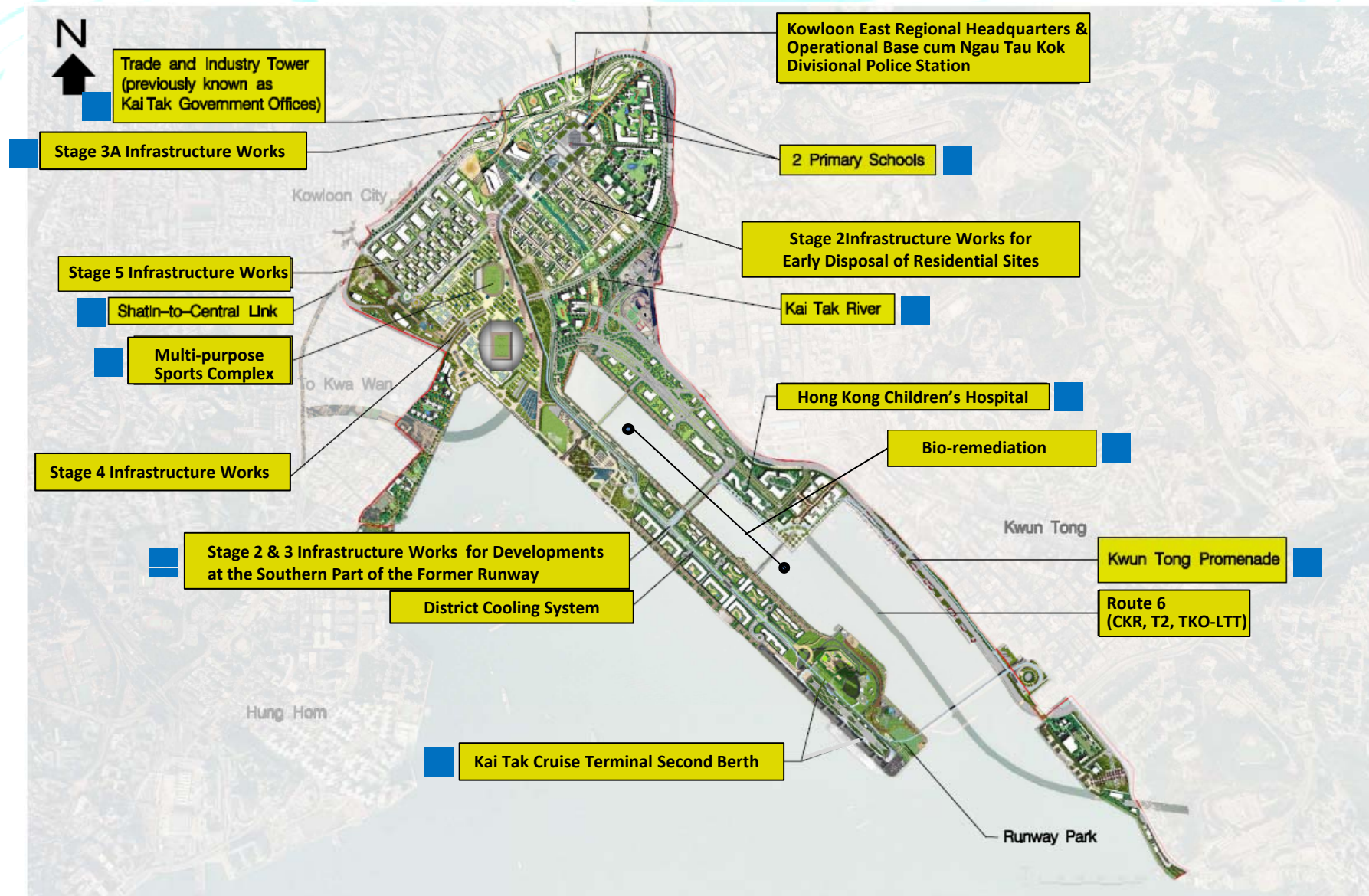
Distinguished,  
Vibrant,  
Attractive and  
People-Oriented  
Kai Tak by  
Victoria Harbour



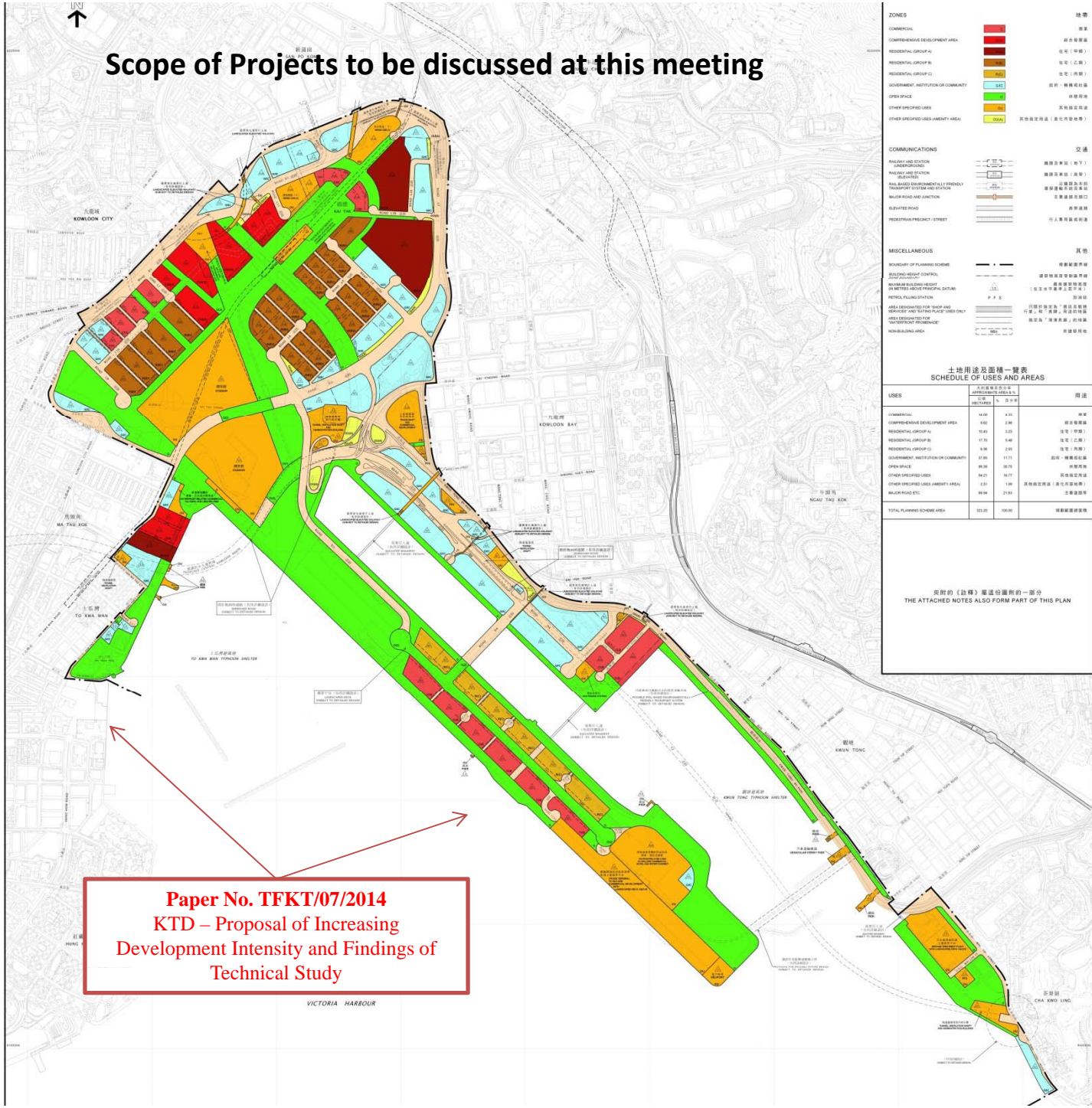
# Projects Completed in 2013



# Projects Under Construction or Active Design



# Scope of Projects to be discussed at this meeting



- ZONES**
- COMMERCIAL
  - COMPREHENSIVE DEVELOPMENT AREA
  - RESIDENTIAL GROUP A
  - RESIDENTIAL GROUP B
  - RESIDENTIAL GROUP C
  - GOVERNMENT, INSTITUTION OR COMMUNITY
  - OPEN SPACE
  - OTHER SPECIFIED USES
  - OTHER SPECIFIED USES (AREAS)
- COMMUNICATIONS**
- RAILWAY AND STATION
  - RAILWAY AND STATION
  - RAIL-BASED ENVIRONMENTALLY FRIENDLY TRANSPORT SYSTEM AND STATION
  - BLVD. ROAD AND JUNCTION
  - ELEVATED ROAD
  - RESIDENTIAL PROJECT STREET
- MISCELLANEOUS**
- BOUNDARY OF PLANNING SCHEME
  - ECOLOGICAL SENSITIVE ZONE
  - MINIMUM BUILDING HEIGHT
  - PLANNING ZONE (PROVISIONAL STATUS)
  - PUBLIC PLAZA STATION
  - AREA DESIGNATED FOR TOURISM AND RECREATION AND OTHER PLACE USES ONLY
  - AREA DESIGNATED FOR "SUSTAINABLE PLANNING"
  - NON-BUILDING AREA

**土地用途及面積一覽表**  
**SCHEDULE OF USES AND AREAS**

USES	總計規劃區佔地總面積 APPLICABLE AREAS, % 佔地率	用途
COMMERCIAL	14.00	商業
COMPREHENSIVE DEVELOPMENT AREA	9.60	綜合發展區
RESIDENTIAL GROUP A	9.60	住宅 (甲類)
RESIDENTIAL GROUP B	17.70	住宅 (乙類)
RESIDENTIAL GROUP C	4.36	住宅 (丙類)
GOVERNMENT, INSTITUTION OR COMMUNITY	2.08	政府、機構或社區
OPEN SPACE	86.30	休憩用地
OTHER SPECIFIED USES	14.21	其他指定用途
OTHER SPECIFIED USES (AREAS)	2.80	其他指定用途 (其他指定用途)
NON-BUILDING	48.96	非建築用地
TOTAL PLANNING SCHEME AREA	221.20	總劃區發展面積

本圖的《註釋》是這份圖則的一部分  
THE ATTACHED NOTES ALSO FORM PART OF THIS PLAN

**Paper No. TFKT/07/2014**  
**KTD – Proposal of Increasing**  
**Development Intensity and Findings of**  
**Technical Study**





**Thank You**

# Interception Facilities and Sewage Pumping Stations



## Interception Facilities at Jordan Valley Box Culvert

- Started operation in mid 2013

## Sewage Pumping Station

- At Prince Edward Road East
- Commissioned in Dec 2012



# Public Rental Housing



- Kai Ching Estate (啟晴邨) : population intake commenced on 31 Jul 2013 (5,204 flats)
- Tak Long Estate (德朗邨) : population intake to start in two phases: Nov 2013 (5,615 flats)  
Jan 2014 (2,549 flats)





# District Cooling System (DCS) Phases I and II



## Phase I at North Apron Area –

- in service for the non-domestic area of Public Rental Housing since 25 May 2013



## Phase II for Cruise Terminal -

- Pipe-laying works completed
- Construction of a temporary chiller plant room to supply chilled water to cruise terminal completed
- Construction of southern plant room and sea water pump room in progress

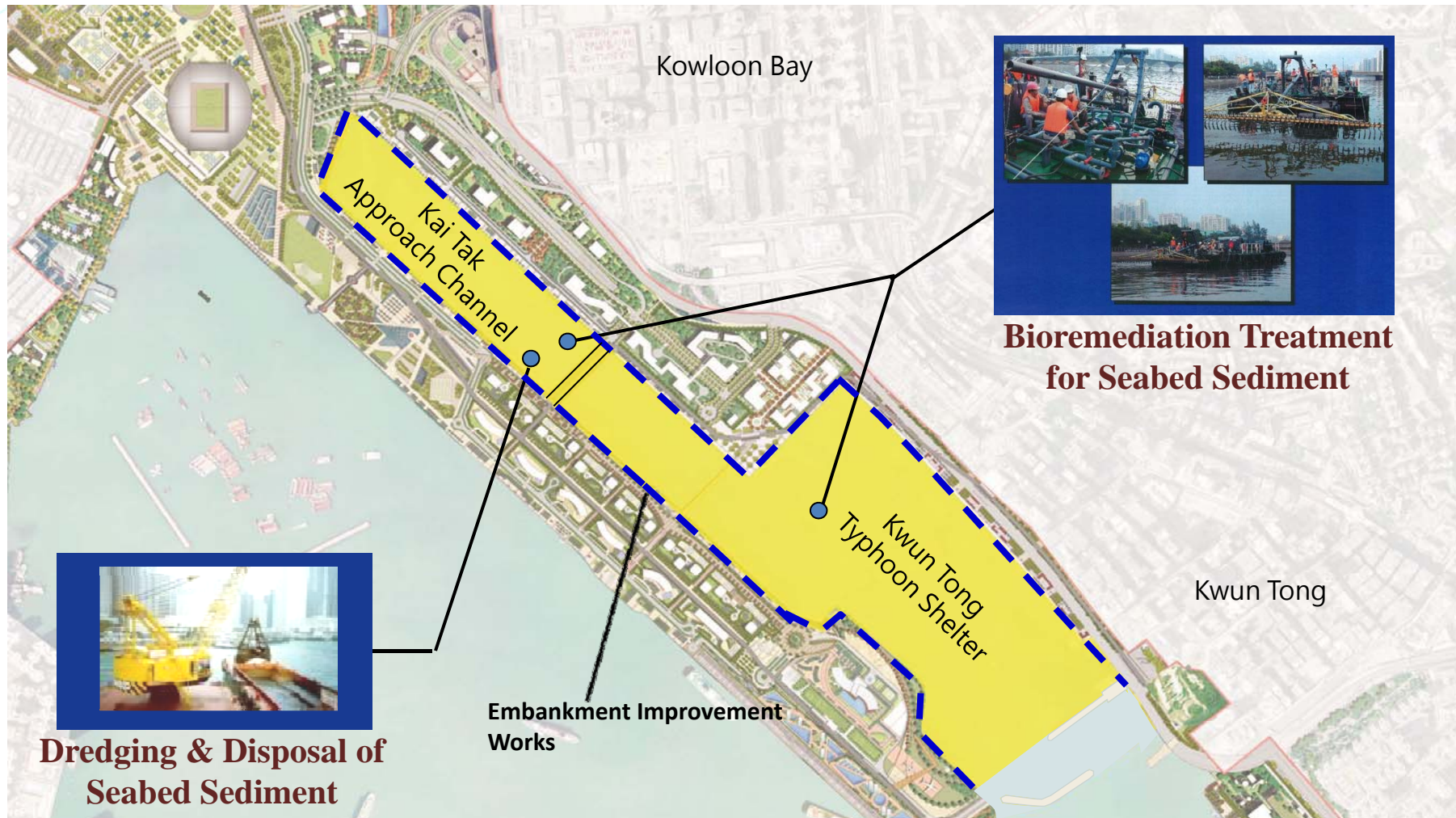


## Sub-Divisional Fire Station with Ambulance Facility cum Urban Search & Rescue Equipment Store



- Works completed in June 2013
- In operation

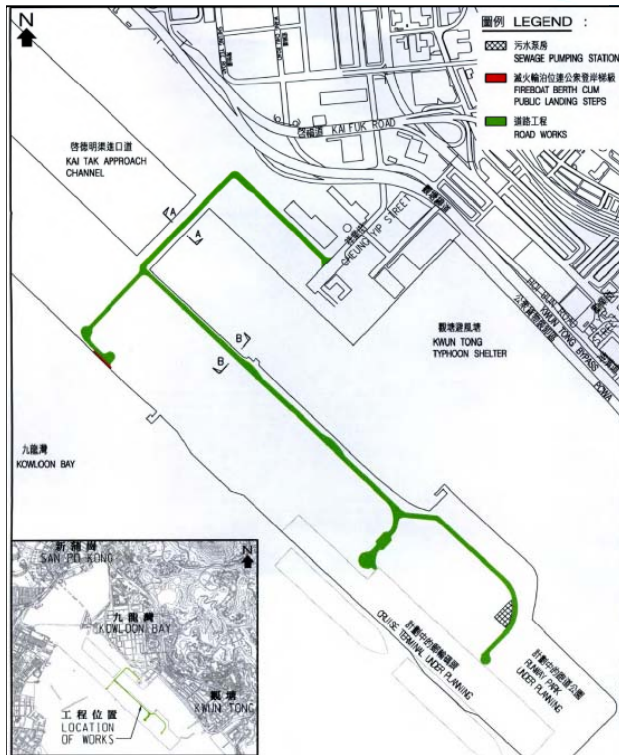
# Bio-remediation Works at Kai Tak Approach Channel and Kwun Tong Typhoon Shelter



- Dredging and embankment works completed
- Bio-remediation works are substantially completed



# Advance Infrastructure Works Stage 1



- Shing Fung Road & Shing Cheong Road were open to the public in May 2013 with provision of a temporary toilet & roadside seats.



# Kai Tak Cruise Terminal (KTCT) and Runway Park Phase I



## Kai Tak Cruise Terminal (KTCT)

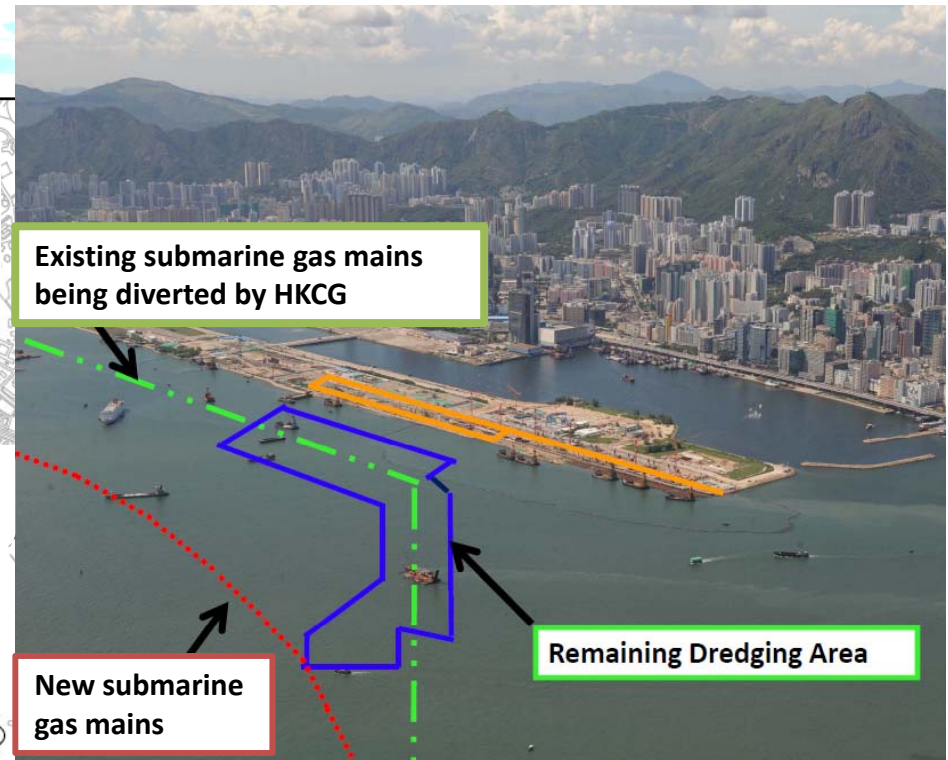
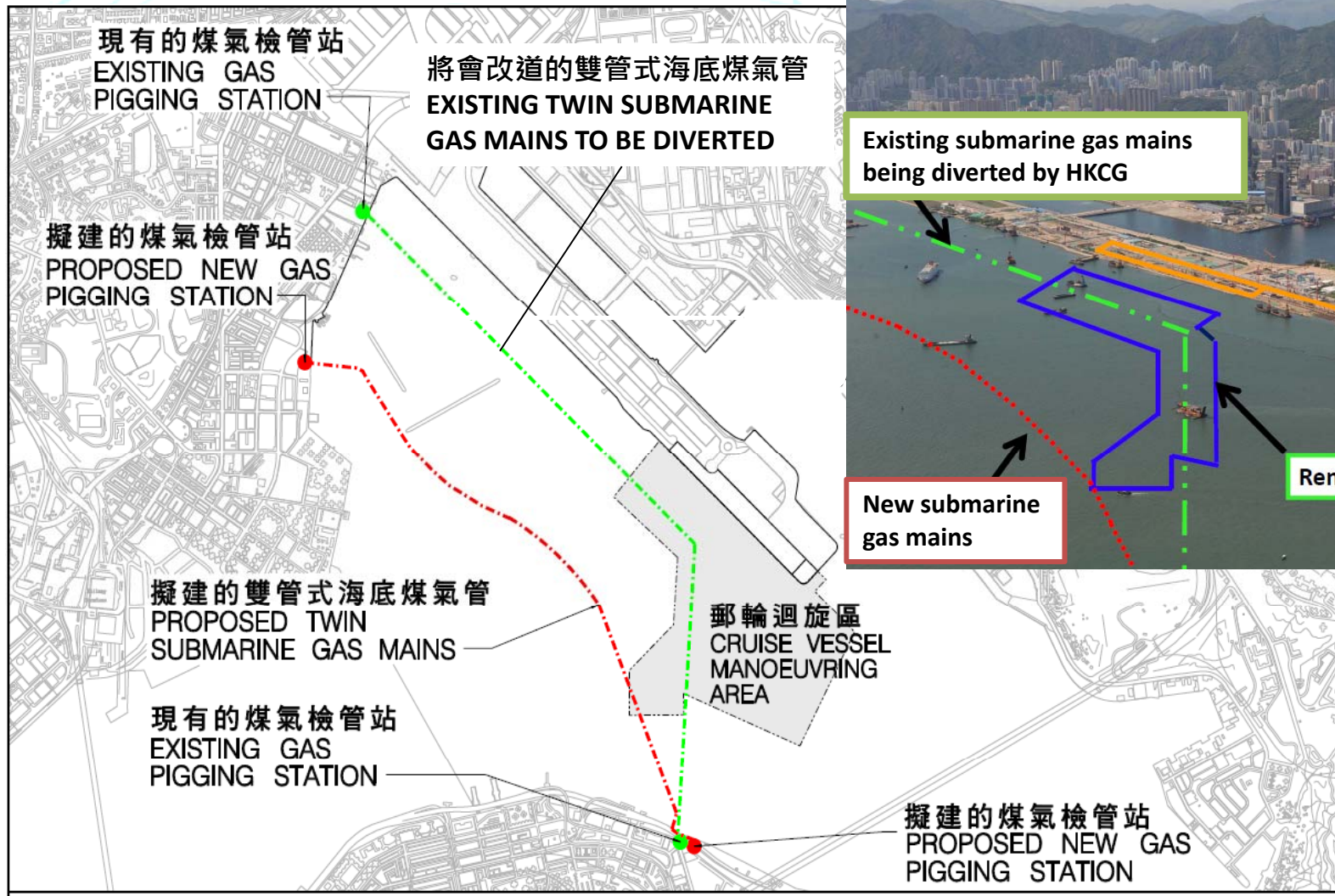
- KTCT building and the 1st berth commissioned on 12 Jun 2013
- Landscaped deck was open to the public on 18 Oct 2013

## Runway Park Phase I

- Open to public in early 2014



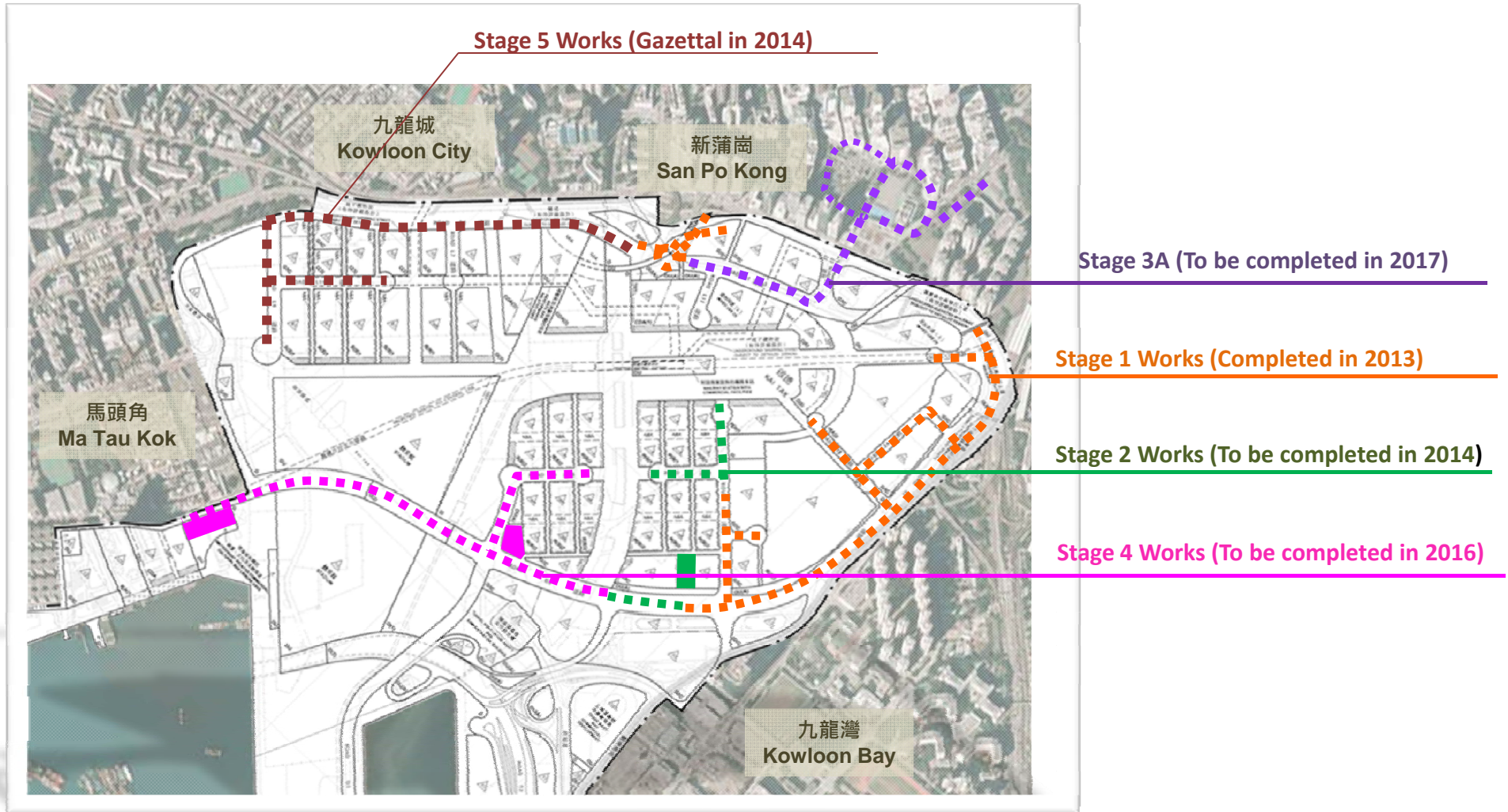
# Diversion of Gas Mains & Relocation of GPSs



- The remaining dredging works aimed at completion by Oct 2015.



# Infrastructure works at North Apron Area



## Trade and Industry Tower (TI Tower)



- Works commenced on 16 Jan 2012 for completion by Apr 2015
- Construction of superstructure in progress

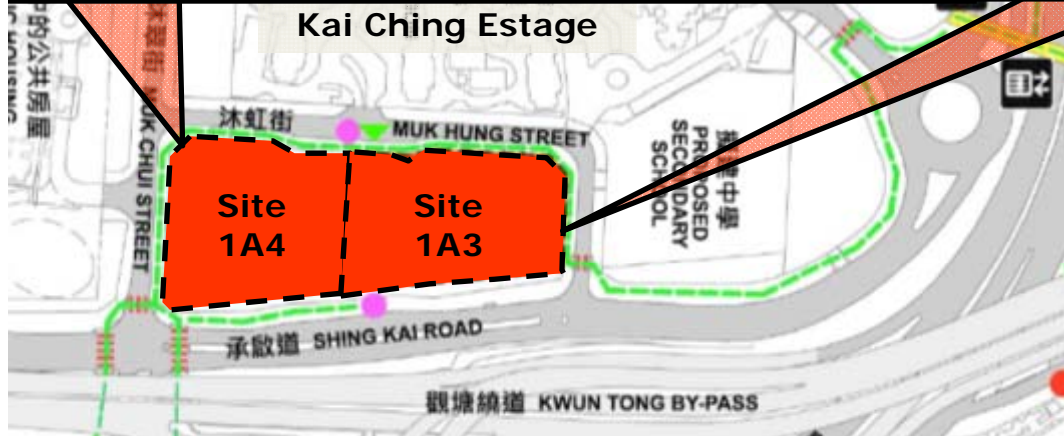


## Two Primary Schools in Sites 1A3 & 1A4

Po Leung Kuk Stanley Ho Sau Nan Primary School



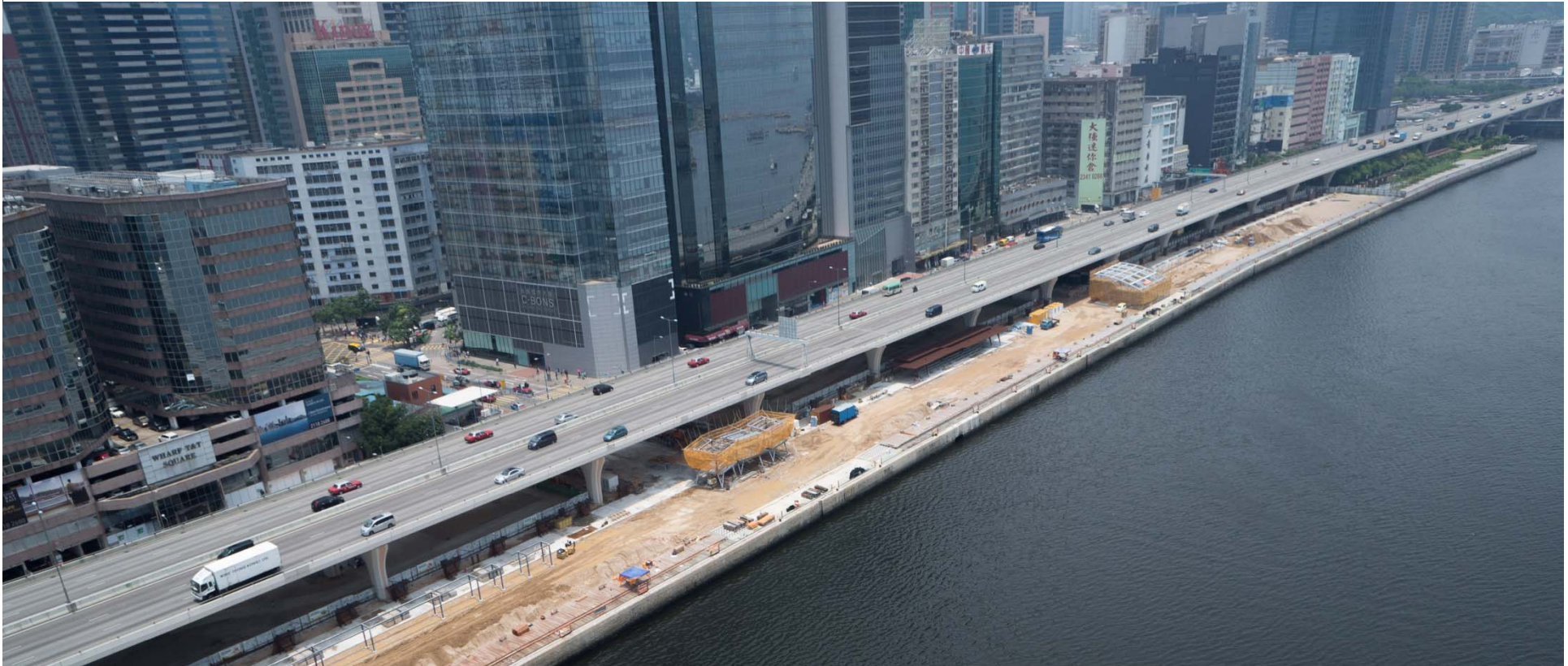
S.K.H. Yat Sau Primary School & S.K.H. Ching Shan Primary School



- Works to commence in end Nov 2013 for completion by Sep 2015



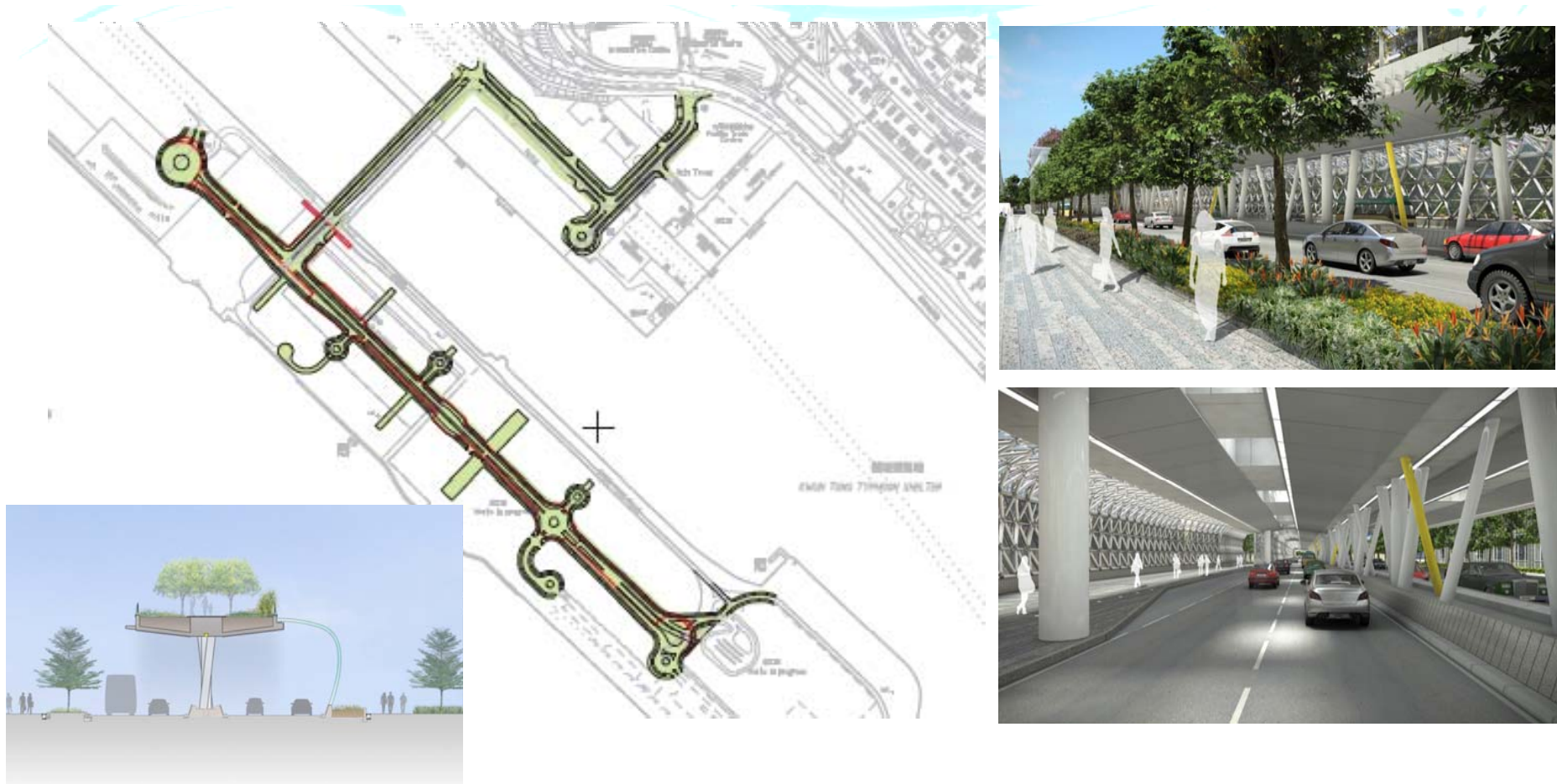
## Kwun Tong Promenade – Stage 2



- Works commenced on 18 Feb 2013 for completion by end 2014.



## Stage 2 and 3 Infrastructure Works for Developments at the Southern Part of the Former Runway



- Plan to commence construction in mid 2015 for completion in 2019

# Multi-purpose Sports Complex



- Planned to complete by 2019/20
- The EIA study was resumed on 21 March 2014 for completion in 20 months



# Shatin to Central Link

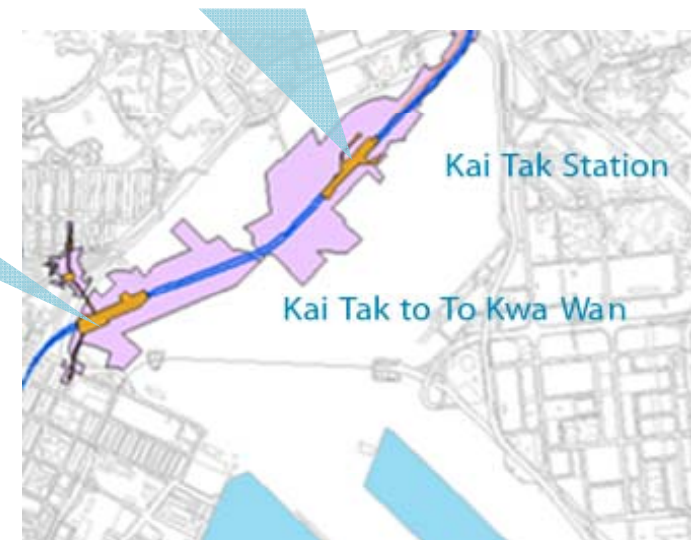
Kai Tak Station

To Kwa Wan Station

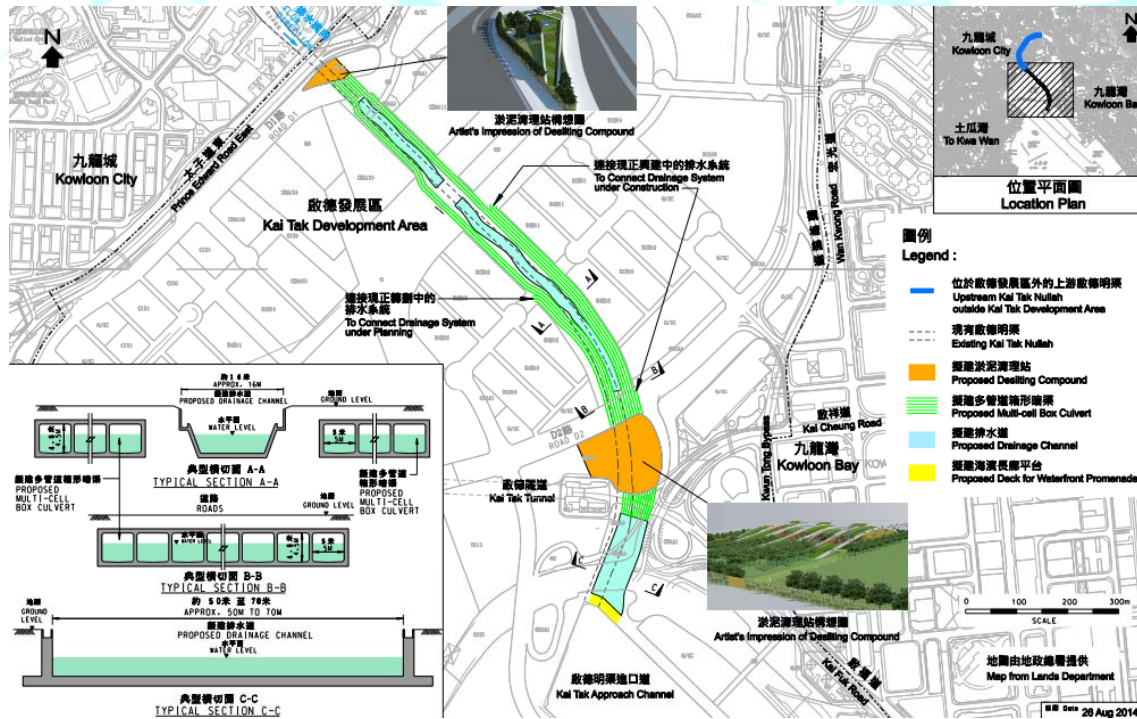


Works within KTD commenced in Aug 2012:-

- Part of the excavation works are being affected by the recent archaeological discoveries at the site.



# Kai Tak River (Kai Tak section)



排水道的構想圖  
Artist's impression of Drainage Channel

- Upgrading and reconstruction works commenced on 31 January 2013 for completion by phases between 2016 and 2018.
- Design ideas competition for the beautification of Kai Tak River was launched on 26 August 2014.



# Hong Kong Children's Hospital



- Works commenced in August 2013 for completion in June 2017.



# Environmentally Friendly Linkage System



- A 2-stage public engagement exercise was completed on 4 February 2014
- Panel on Development will continue its discussion in 2014/15 session