



AECOM

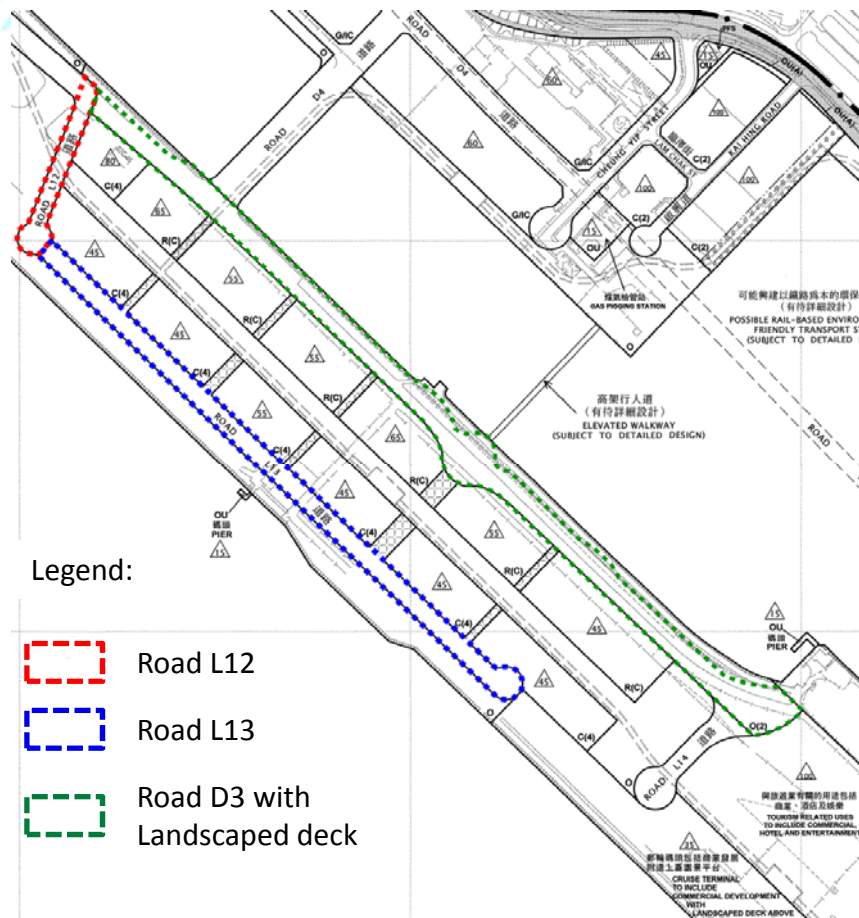


PWP Item No. 7711CL (part)

Kai Tak Development - Stage 2 infrastructure works for developments at the southern part of the former runway

Harbourfront Commission Task Force on Kai Tak Harbourfront Development
Meeting on Tuesday 14th of January 2014

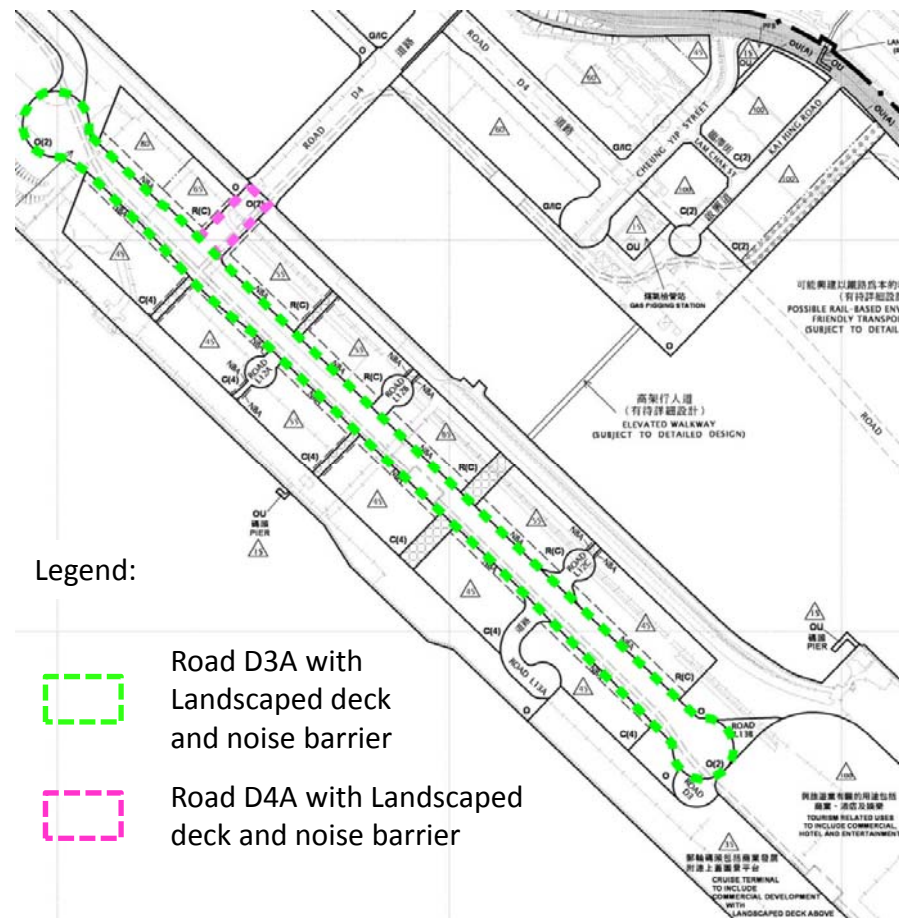
Relocation of roads away from the Waterfront to the Central Runway Boulevard



Legend:

- Road L12
- Road L13
- Road D3 with Landscaped deck

Kai Tak OZP No. S/K22/2
(November 2007)



Legend:

- Road D3A with Landscaped deck and noise barrier
- Road D4A with Landscaped deck and noise barrier

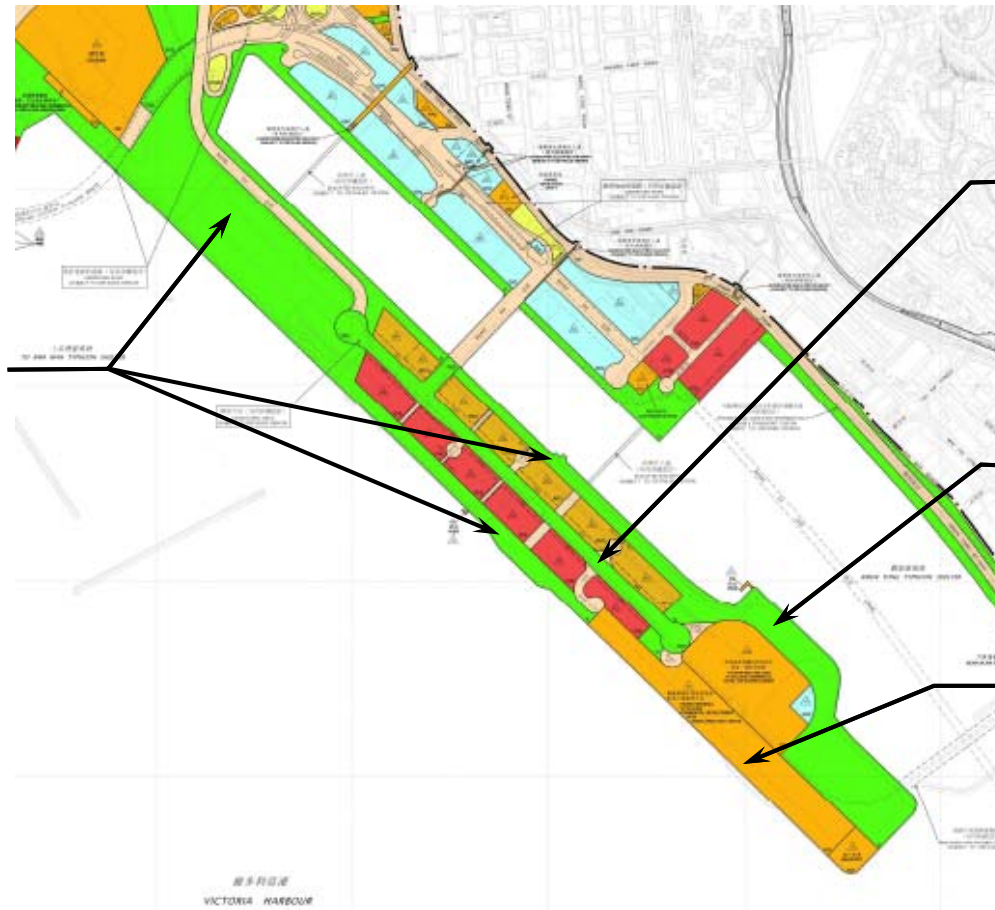
Kai Tak OZP No. S/K22/4
(September 2012)



Kai Tak OZP No. S/K22/4

Open space at the Former Runway

Metro Park and Waterfront Promenades
(about 26 ha.)



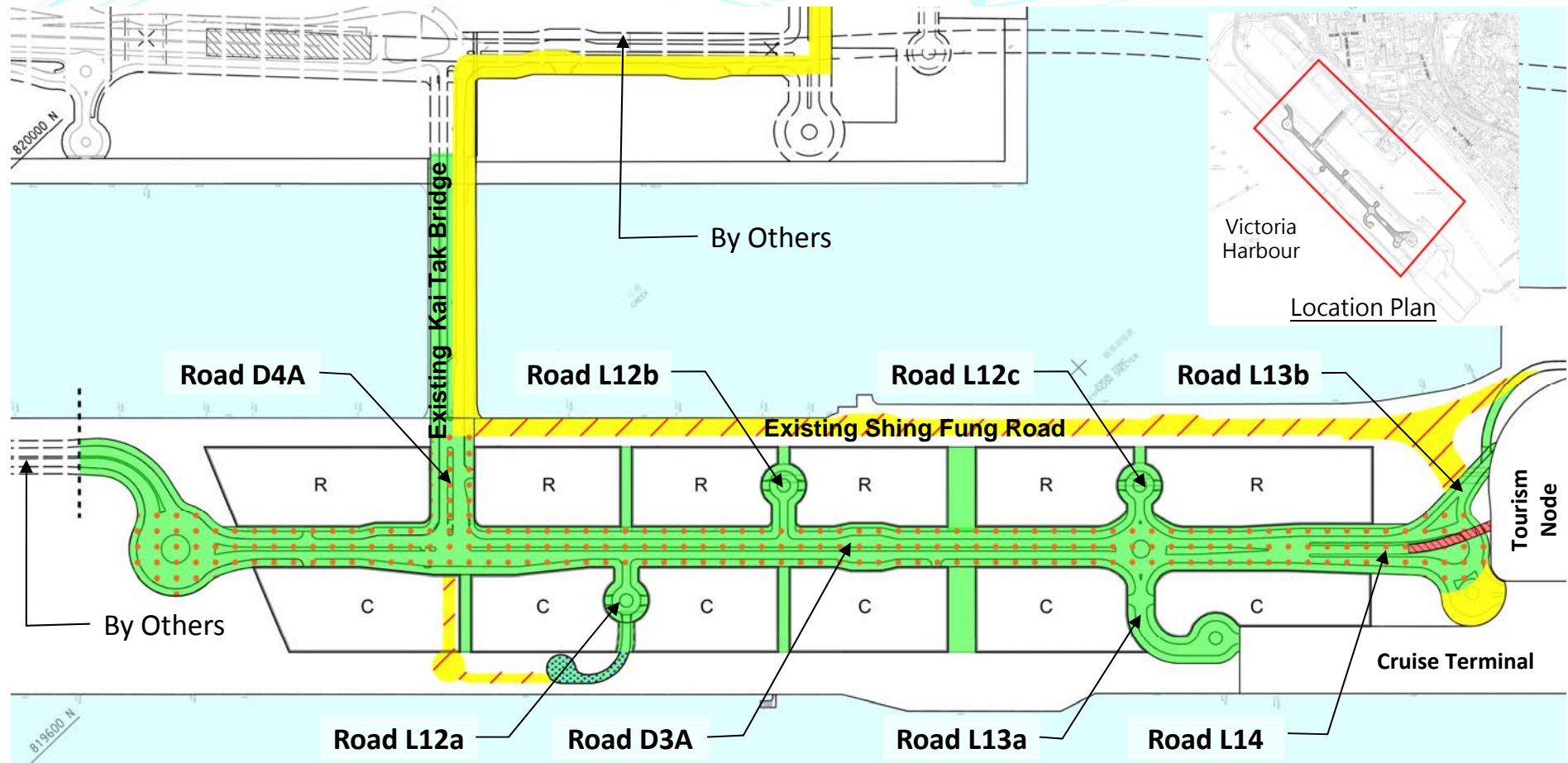
Central Runway Boulevard
(about 3 ha.)

Runway Park
(about 9 ha.)

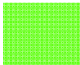
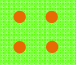




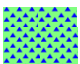
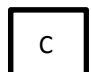
Cruise Terminal Landscaped Deck
(about 2 ha.)



The Scope of Works at the Former Runway

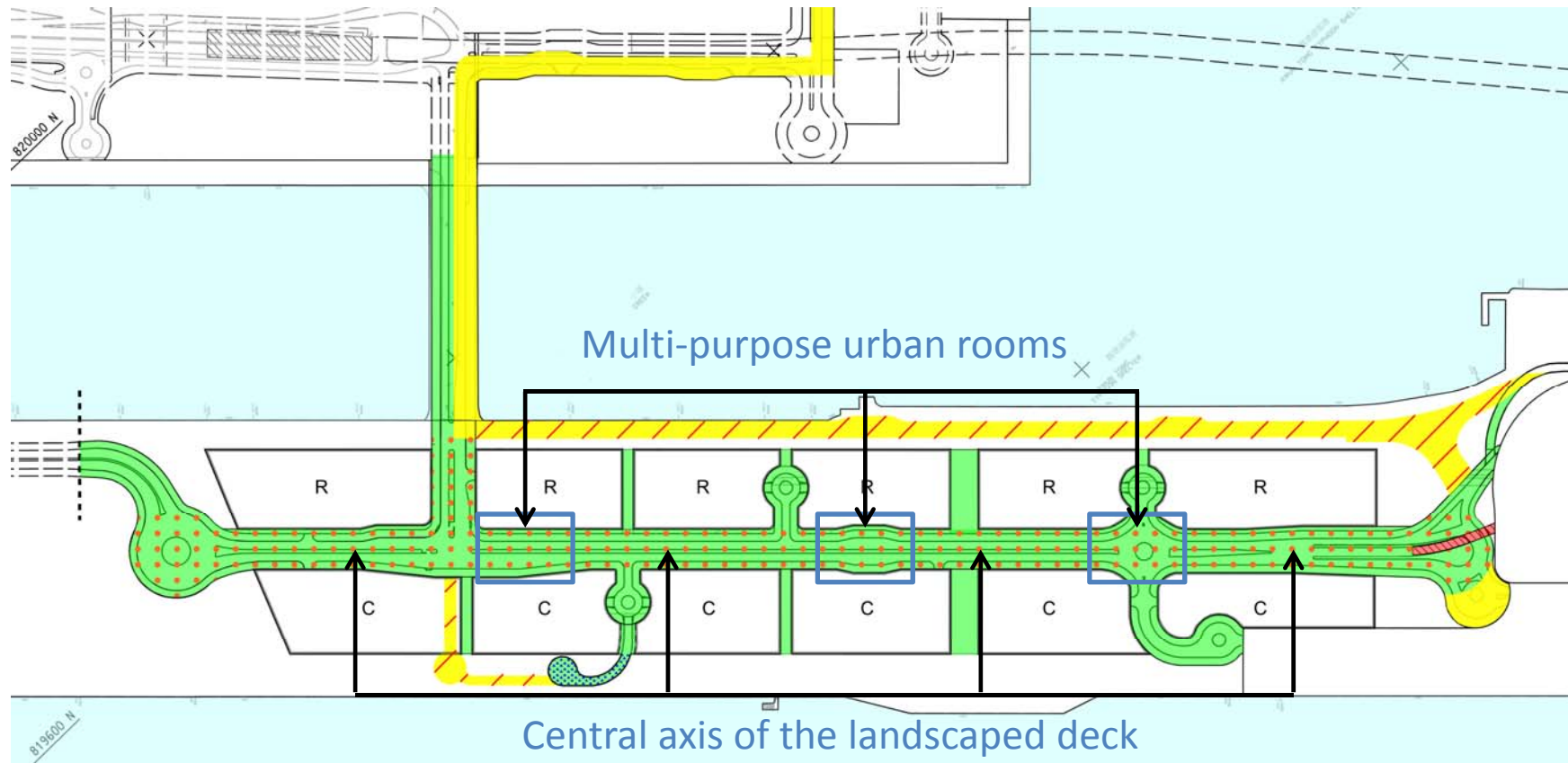


Legend:

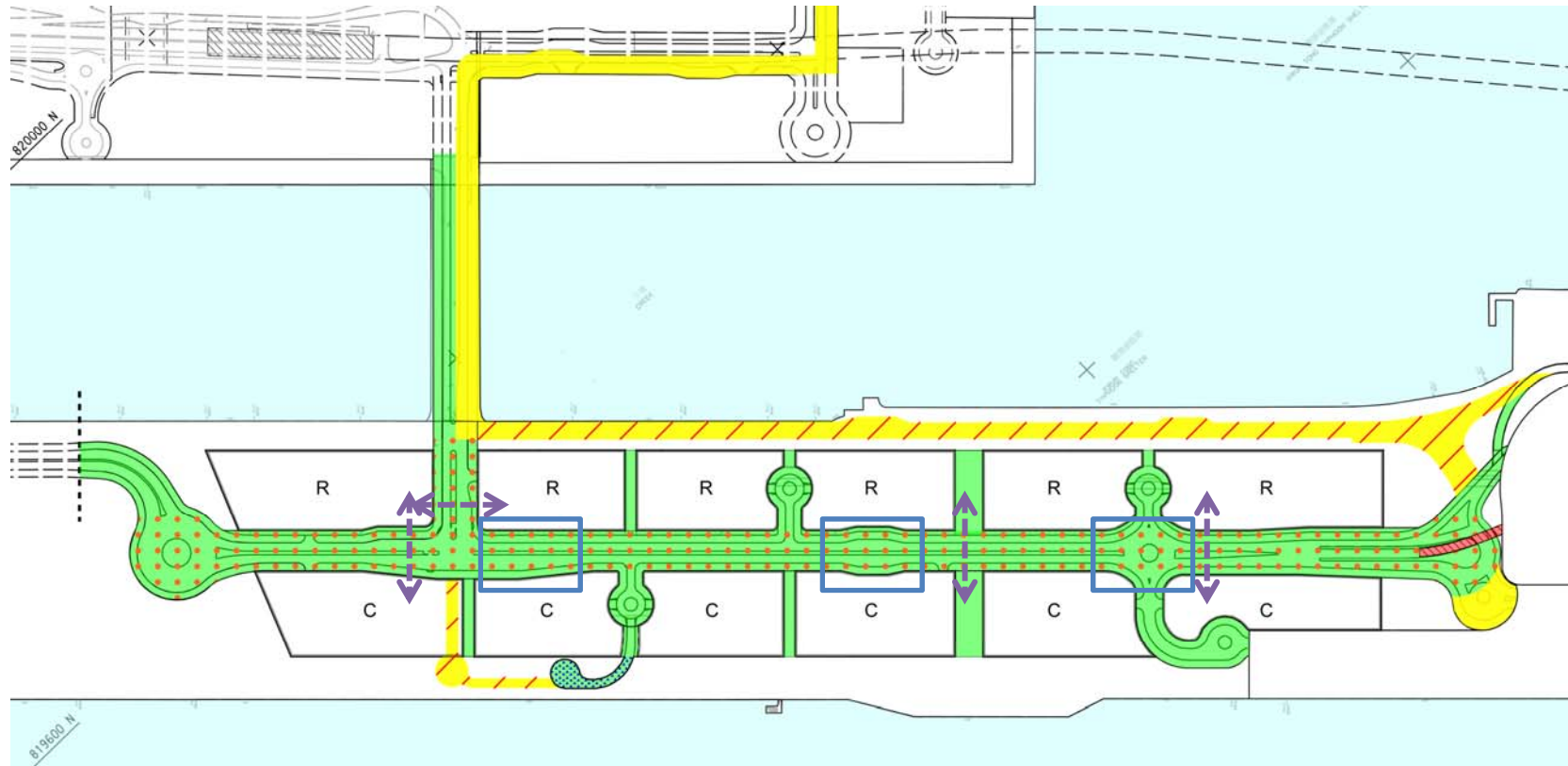
-  Proposed carriageway and footpath
-  Proposed carriageway and footpath with landscaped deck and noise barrier
-  Proposed vehicular tunnel connecting to the future Tourism Node
-  Residential Site
-  Existing road and footpath
-  Existing road and footpath proposed to be closed, part of which for future development as waterfront promenade
-  Proposed temporary footpath, may be used as emergency vehicular access
-  Commercial Site



Conceptual Layout Plan of Landscaped Deck



Pedestrian Crossings at Roads D3A and D4A



Legend:

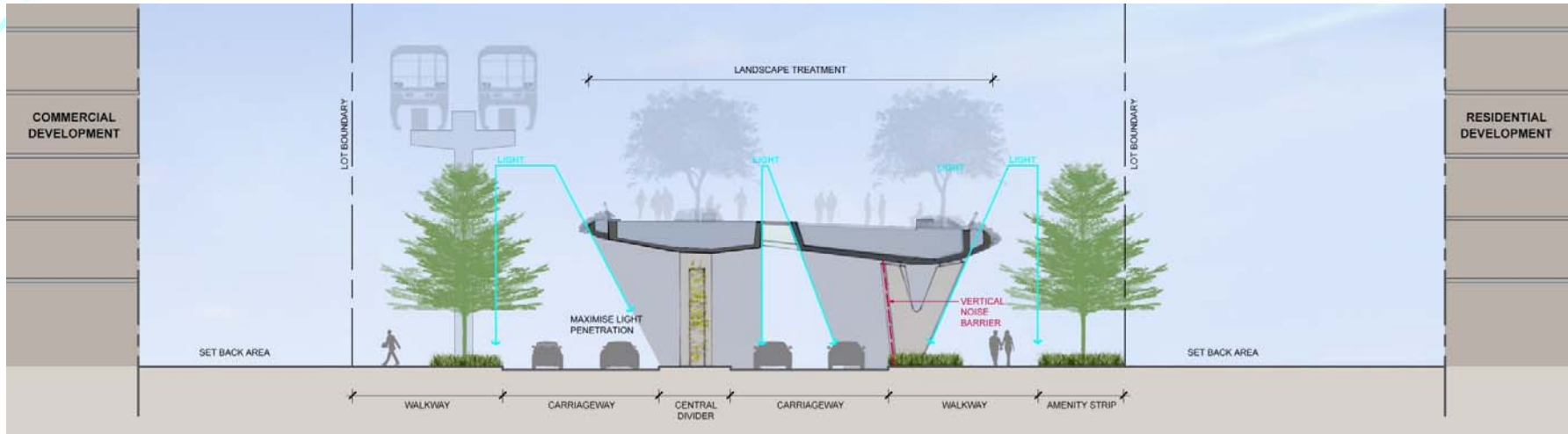


Possible at-grade crossing subject to further study

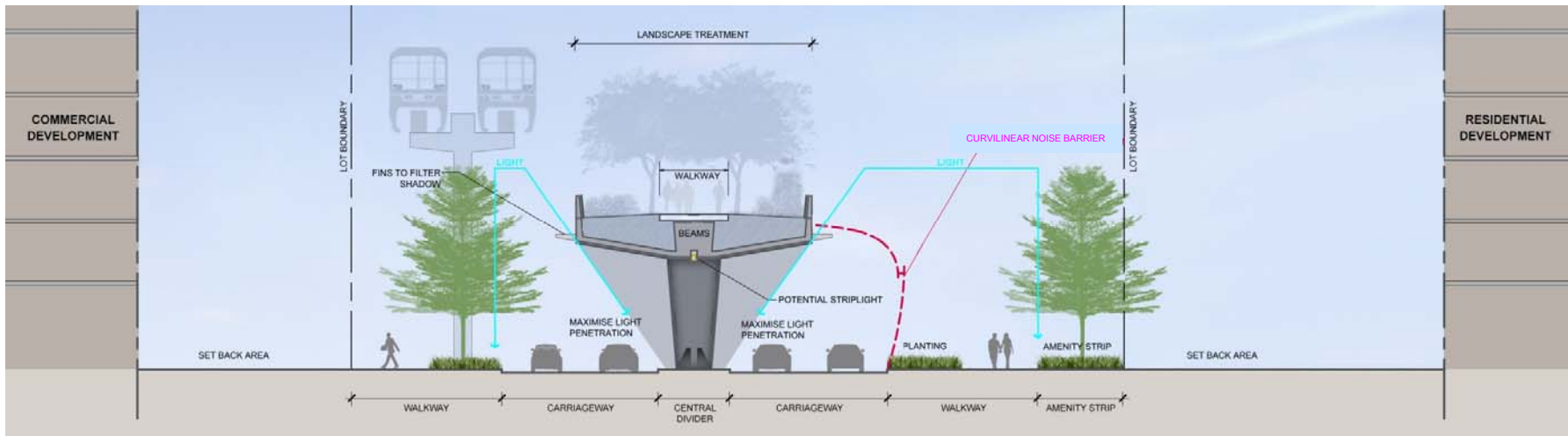


Conceptual Impression on the Typical Section of the Deck

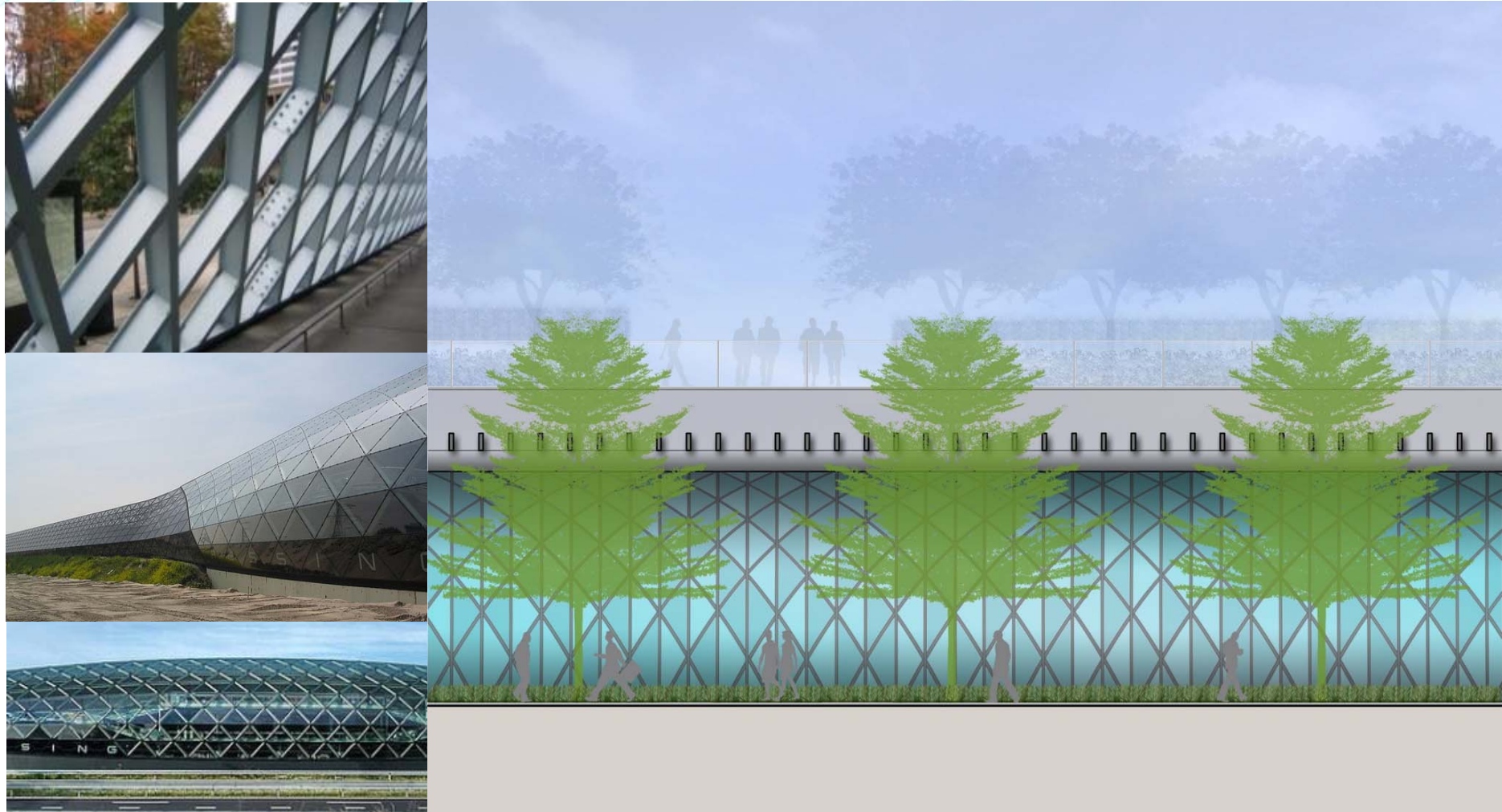
Approach 1 / **DIAGRID** / Wide deck (20 m minimum width)



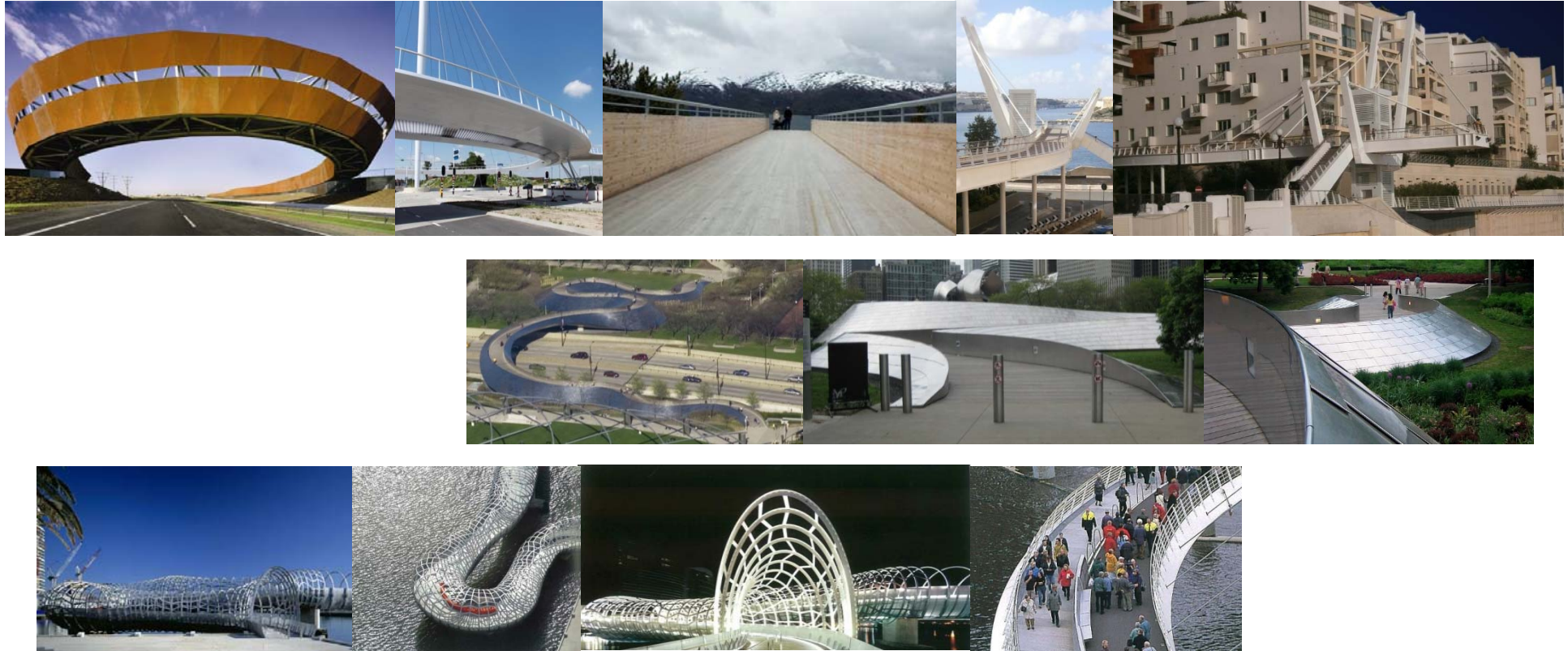
Approach 2 / **SKYWALK@KAI-TAK** / Linear open space (11 m minimum width)



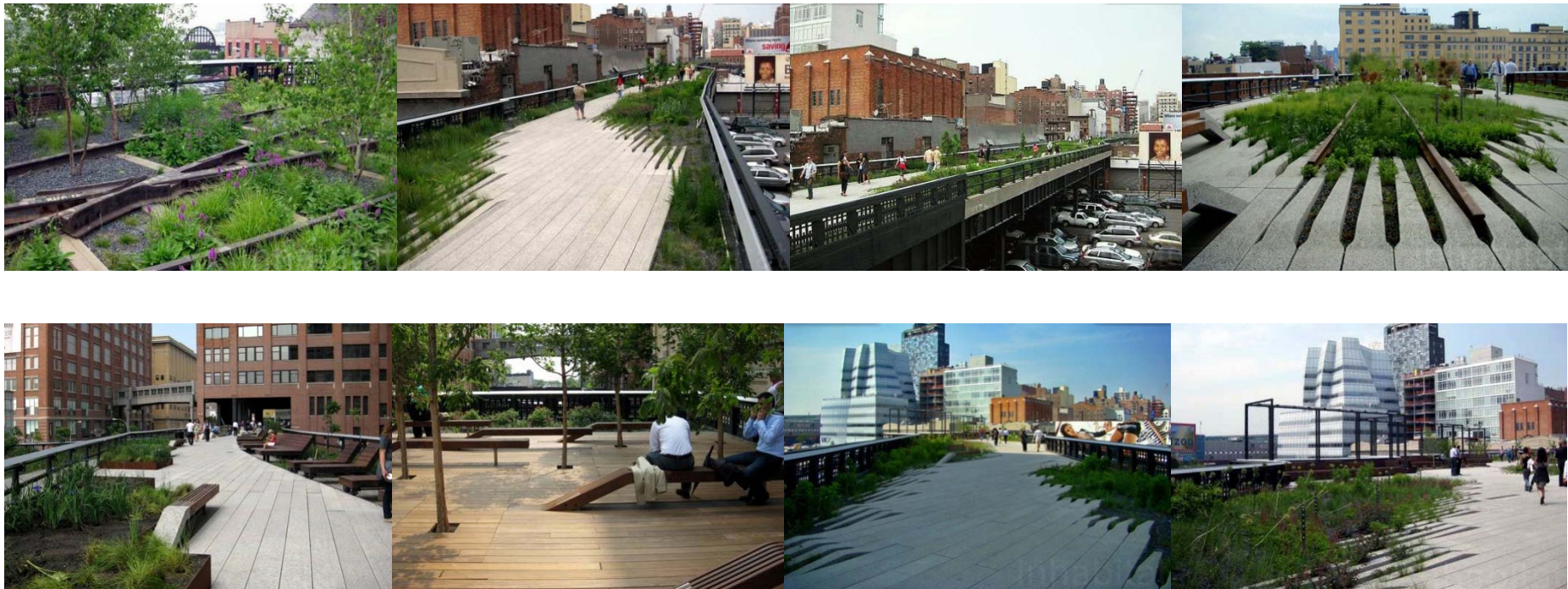
Possible Noise Barrier Arrangements



Illustrative Connections to Metro Park and Tourism Node



High Line – New York City



Length: about 1.6km open, out of the 2.3km planned to be open to public
Width: about 10m wide
Height: about 9m above ground level



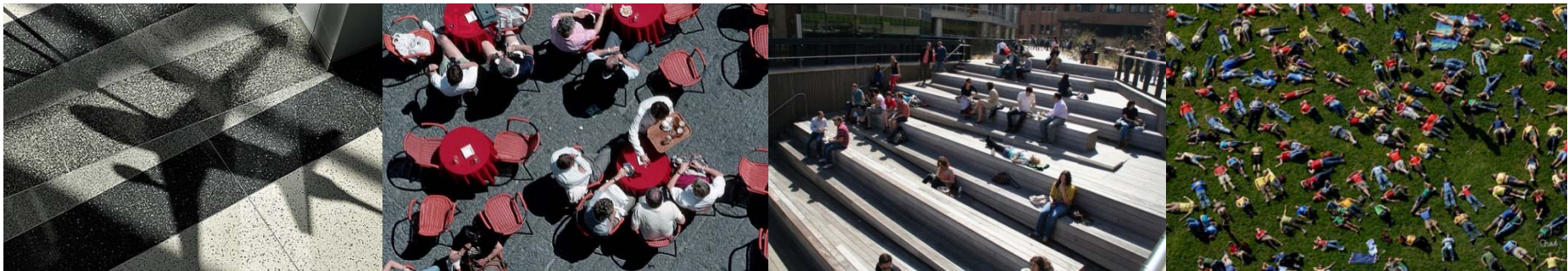
Promenade Plantée - Paris



Length: about 4.5km
Width: about 10m wide
Height: about 10m above ground level



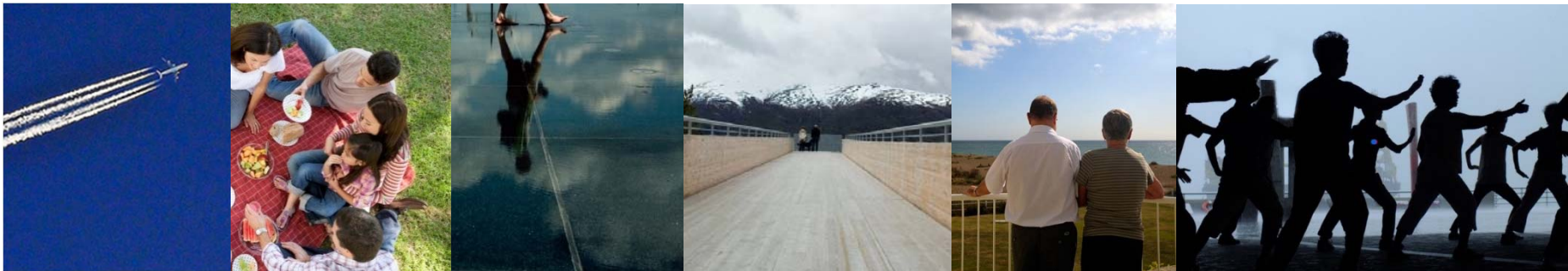
A Place for All



A Creative Art Walk



A Moment of Peace



Time Table

Time	Items
1st half of 2014	Gazette under Roads (Works, Use and Compensation) Ordinance (Chapter 370), Foreshore and Sea-Bed (Reclamations) Ordinance (Chapter 127) and Water Pollution Control (Sewerage) Regulation (Chapter 358)
1st half of 2014	Pre-qualification*
2015	Further updating HC on the design of landscaped deck

* This will be a Design-and-Build contract.



AECOM



Thank You