

# **Task Force on Kai Tak Harbourfront Development**

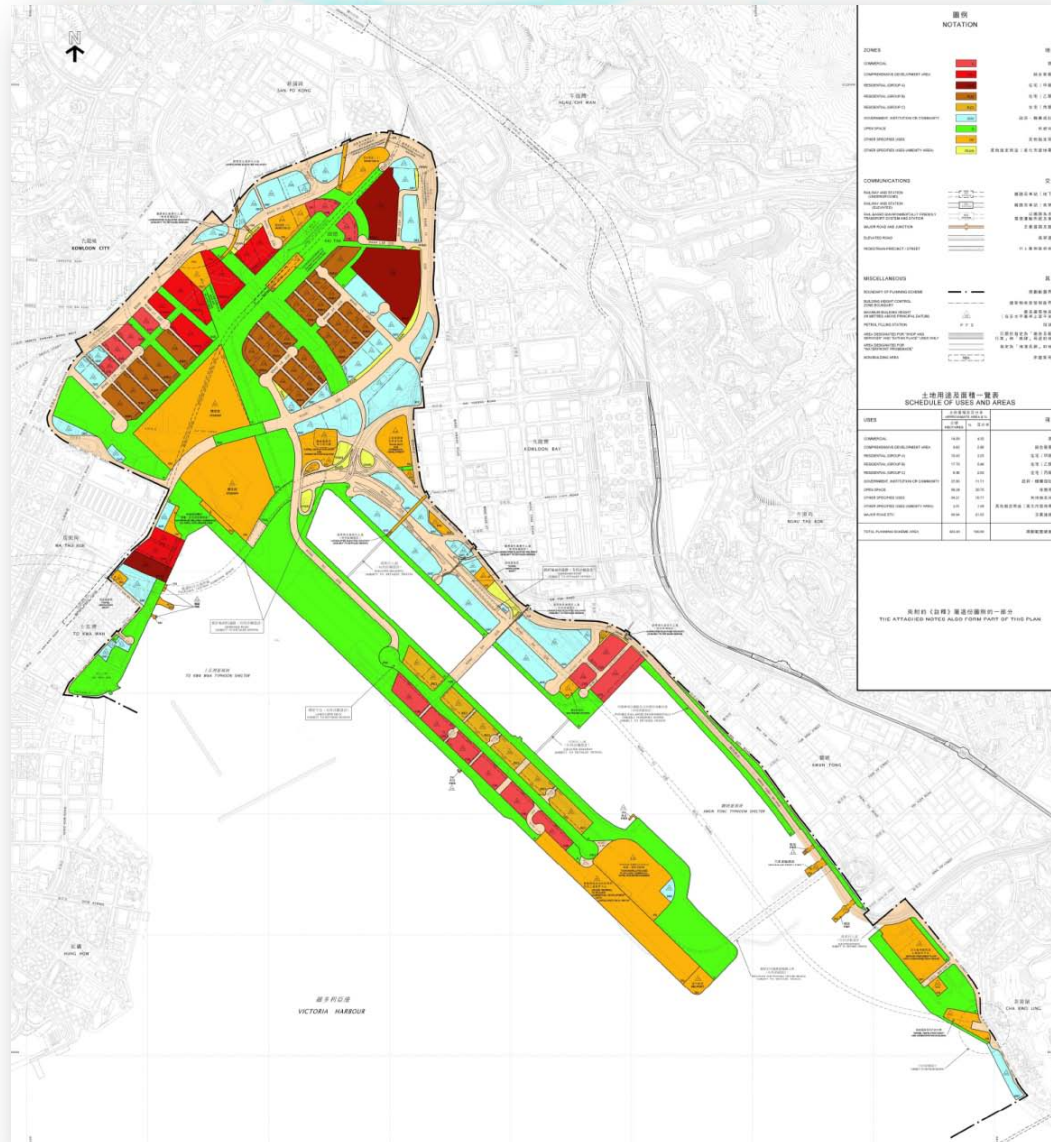
## **Kai Tak Development Progress Report as of December 2013**

**(Paper No. TFKT/01/2014)**

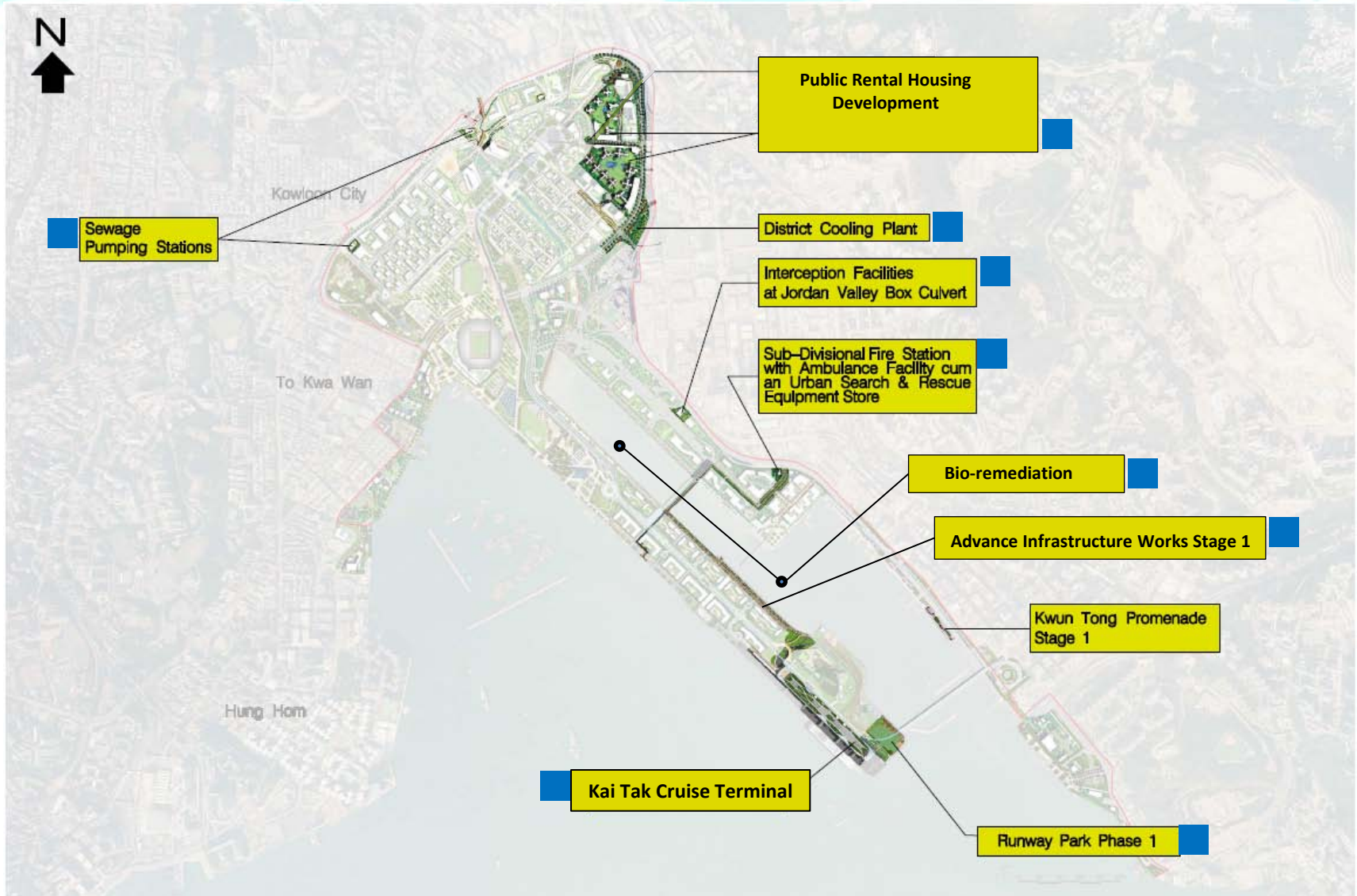
# Kai Tak OZP No. S/K22/4 (September 2012)

## Planning Vision

**Distinguished,  
Vibrant,  
Attractive and  
People-Oriented  
Kai Tak by  
Victoria Harbour**

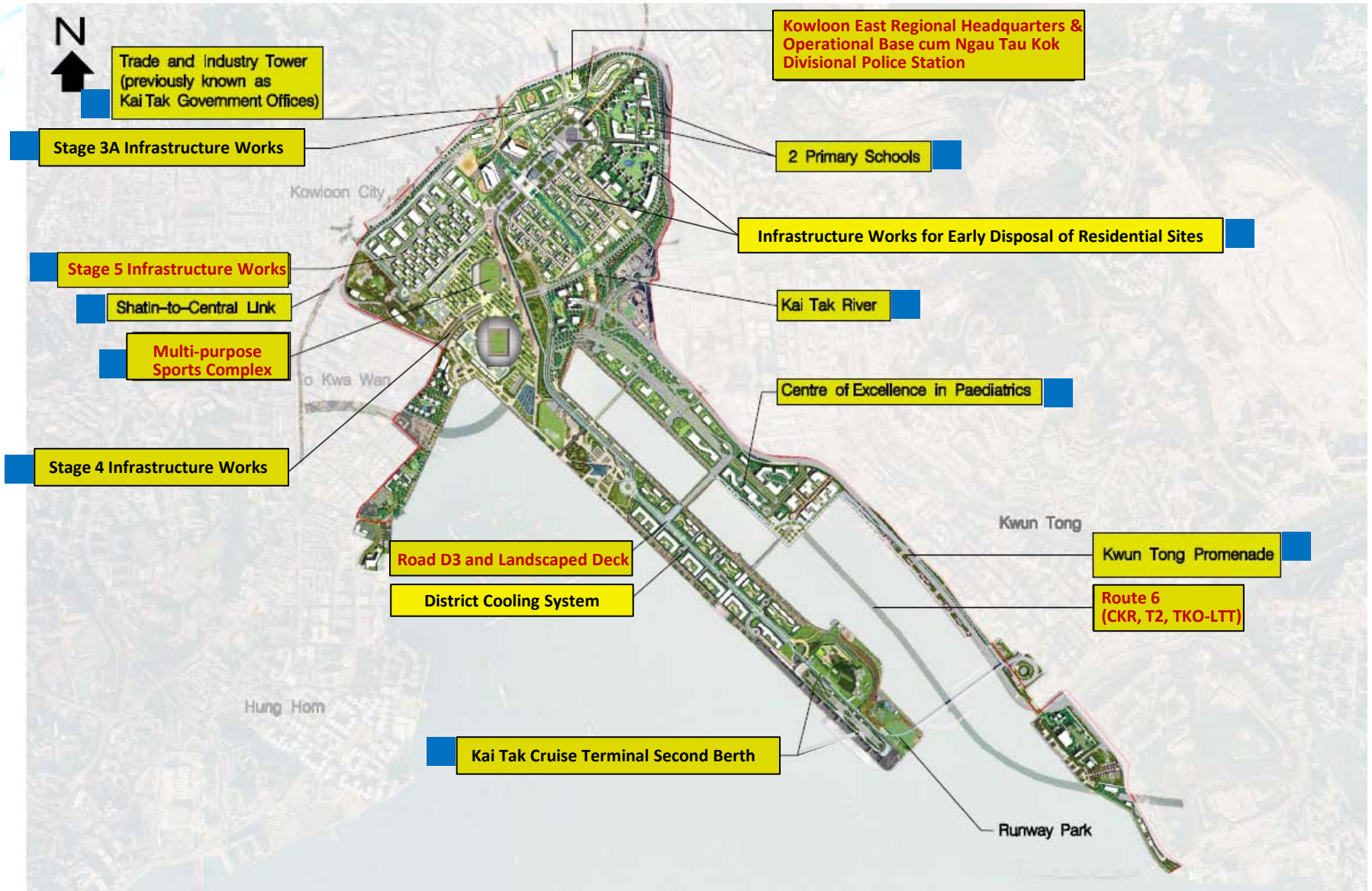


# Projects Completed or Approaching Completion in 2013

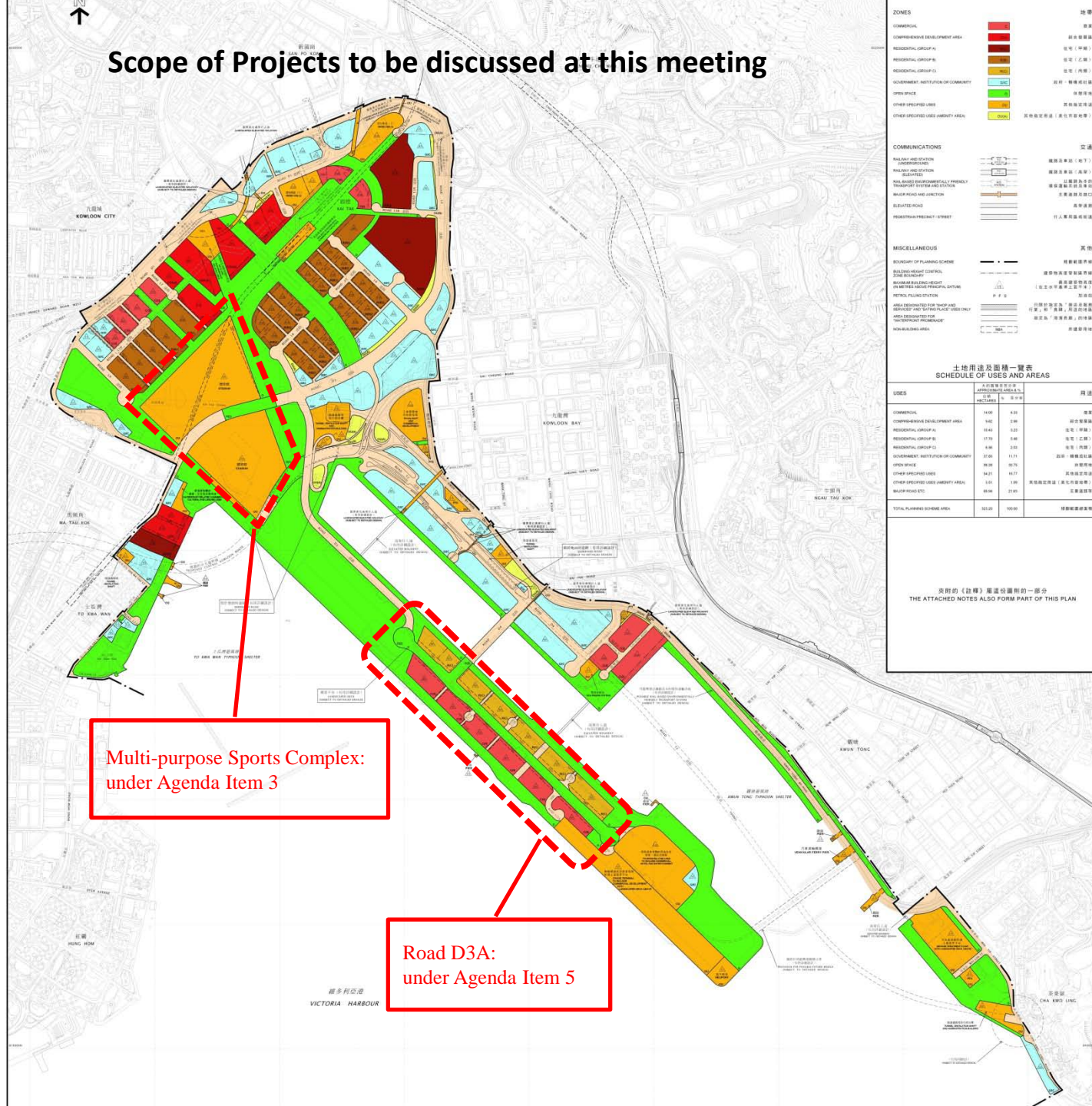




# Projects Under Construction or Active Design



# Scope of Projects to be discussed at this meeting



Multi-purpose Sports Complex:  
under Agenda Item 3

Road D3A:  
under Agenda Item 5

**ZONES**

- COMMERCIAL: 商業
- COMPREHENSIVE DEVELOPMENT AREA: 綜合發展區
- RESIDENTIAL GROUP (I): 住宅 (第一類)
- RESIDENTIAL GROUP (II): 住宅 (第二類)
- RESIDENTIAL GROUP (III): 住宅 (第三類)
- GOVERNMENT, INSTITUTION OR COMMUNITY: 政府、機構或社區
- OPEN SPACE: 綠地
- OTHER SPECIFIED USES: 其他指定用途
- OTHER SPECIFIED USES URGENCY AREA: 其他指定用途 (具先予考慮性質)

**COMMUNICATIONS**

- HAZARD AND CLADDING UNDERPASSAGE: 危險及圍封行人通道
- PAVING AND CANTON: 鋪地及渠
- ACCESSIBLE: 可達
- RAIL-BUS/RAIL-TRAM/ENVIRONMENTALLY FRIENDLY TRANSPORT SYSTEM AND JUNCTION: 鐵路巴士/輕鐵/環保交通系統及接駁口
- BIPOLE ROAD AND JUNCTION: 雙向道路及接駁口
- ELEVATED ROAD: 高架道路
- FOOTPATH-PRESENT STREET: 行人專用通道

**MISCELLANEOUS**

- BOUNDARY OF PLANNING SCHEME: 規劃區界線
- BOUNDARY OF DEVELOPMENT: 發展區界線
- BOUNDARY OF PLANNING SCHEME ON METRE SCALE (PROVISIONAL DATA): 按米制比例尺的規劃區界線 (預備性數據)
- PERIOD PLANNING SCHEME: 分期發展區
- AREA DESIGNATED FOR "HAP AND HONG KONG" AND "HONG KONG PLACE" USES ONLY: 只供「香港」及「香港廣場」用途的區域
- RECREATION AND SPORTS: 康樂及體育
- RECREATION AND SPORTS (URGENCY AREA): 康樂及體育 (具先予考慮性質)
- RECREATION AND SPORTS (URGENCY AREA): 康樂及體育 (具先予考慮性質)

**土地用途及面積一覽表**  
SCHEDULE OF USES AND AREAS

USES	TOTAL PLANNED SCHEME AREA		總量
	總面積 (公頃)	佔總面積 (%)	
COMMERCIAL	14.00	4.31	商業
COMPREHENSIVE DEVELOPMENT AREA	14.00	4.31	綜合發展區
RESIDENTIAL GROUP (I)	18.40	5.57	住宅 (第一類)
RESIDENTIAL GROUP (II)	17.70	5.40	住宅 (第二類)
RESIDENTIAL GROUP (III)	8.96	2.69	住宅 (第三類)
GOVERNMENT, INSTITUTION OR COMMUNITY	27.00	8.17	政府、機構或社區
OPEN SPACE	18.00	5.40	綠地
OTHER SPECIFIED USES	34.21	10.27	其他指定用途
OTHER SPECIFIED USES URGENCY AREA	1.01	0.30	其他指定用途 (具先予考慮性質)
RECREATION AND SPORTS	18.96	5.69	康樂及體育
TOTAL PLANNED SCHEME AREA	102.10	100.00	總發展區面積

本計劃的《附錄》是這份圖則的一部分  
THE ATTACHED NOTES ALSO FORM PART OF THIS PLAN





**Thank You**

# Sewage Pumping Stations



- At Prince Edward Road East
- Commissioned in Dec 2012





# Public Rental Housing



- Kai Ching Estate (啟晴邨) : population intake commenced on 31 Jul 2013 (5,204 flats)
- Tak Long Estate (德朗邨) : population intake to start in two phases: Nov 2013 (5,615 flats)  
Jan 2014 (2,549 flats)



# District Cooling System (DCS) Phases I and II



## Phase I at North Apron Area –

- substantially completed
- in service for the non-domestic area of PRH since 25 May 2013



## Phase II for Cruise Terminal -

- Pipe-laying works completed
- Construction of a temporary chiller plant room to supply chilled water to cruise terminal completed
- Construction of southern plant room and sea water pump room in progress

# Interception Facilities at Jordan Valley Box Culvert



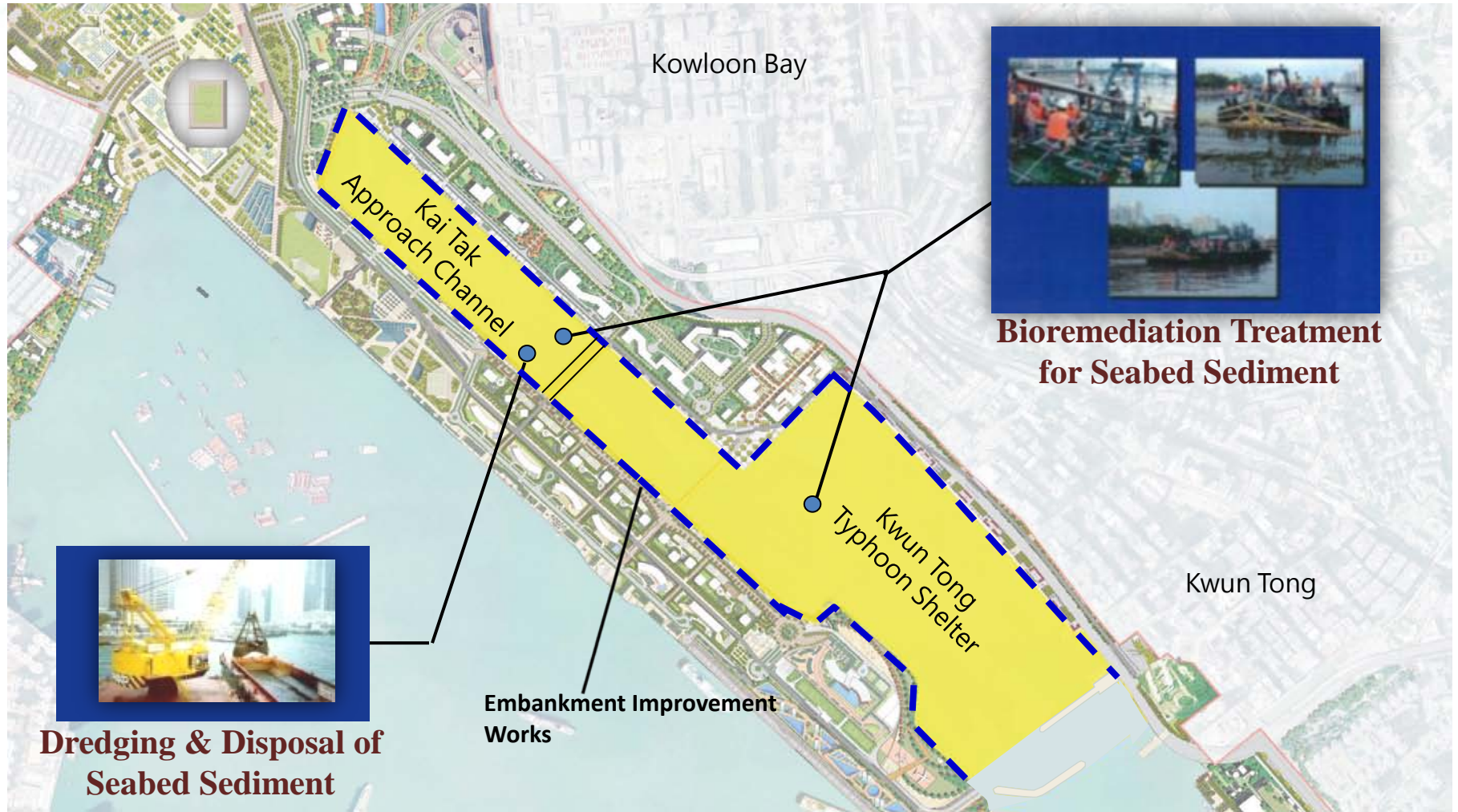


# Sub-Divisional Fire Station with Ambulance Facility cum Urban Search & Rescue Equipment Store



- Works substantially completed in June 2013
- In operation

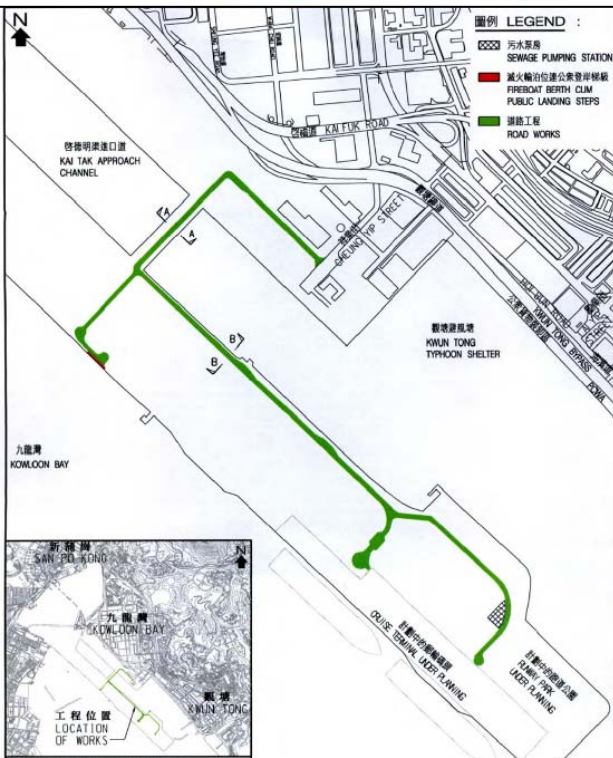
# Bio-remediation Works at Kai Tak Approach Channel and Kwun Tong Typhoon Shelter



- Bio-remediation works aimed at completion in 2014.



# Advance Infrastructure Works Stage 1



- Shing Fung Road (Road TD3) & Shing Cheong Road (Road TD4) were open to the public in May 2013 with provision of a temporary toilet & roadside seats.





# Runway Park Phase I



- Section 1A major works items completed in Q4 2013
- Section 1B, i.e. the remaining parts, to be completed in Q1 2014



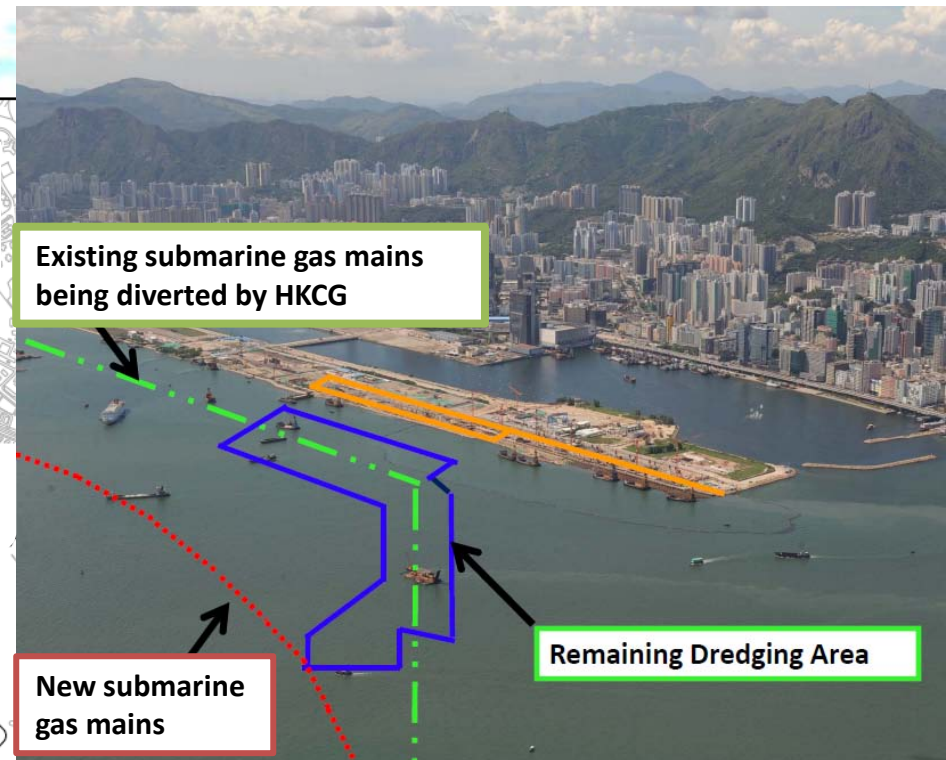
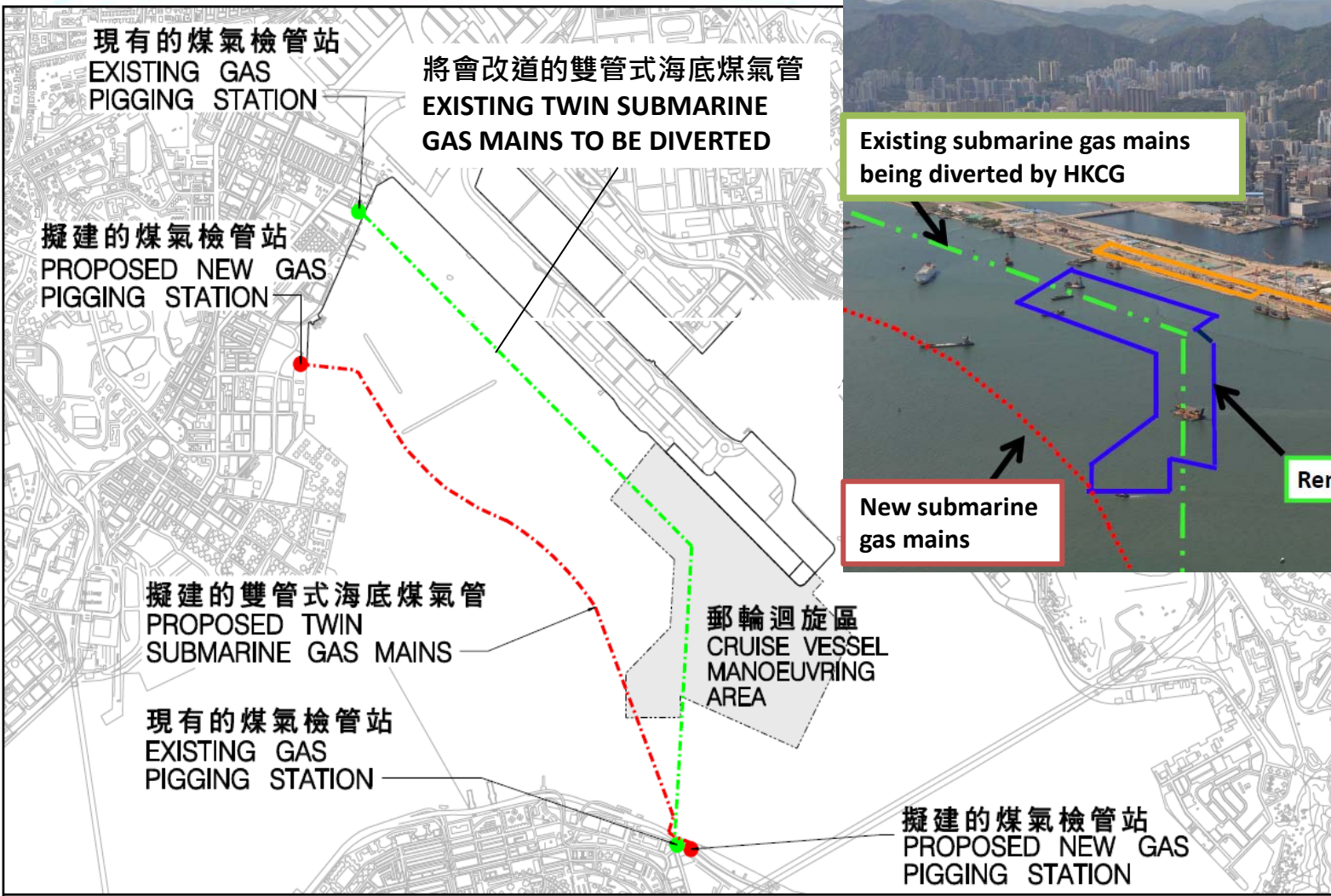


# Kai Tak Cruise Terminal (KTCT)



- KTCT building and the 1st berth commissioned on 12 Jun 2013
- Landscaped deck was open to the public on 18 Oct 2013

# Diversion of Gas Mains & Relocation of GPSs

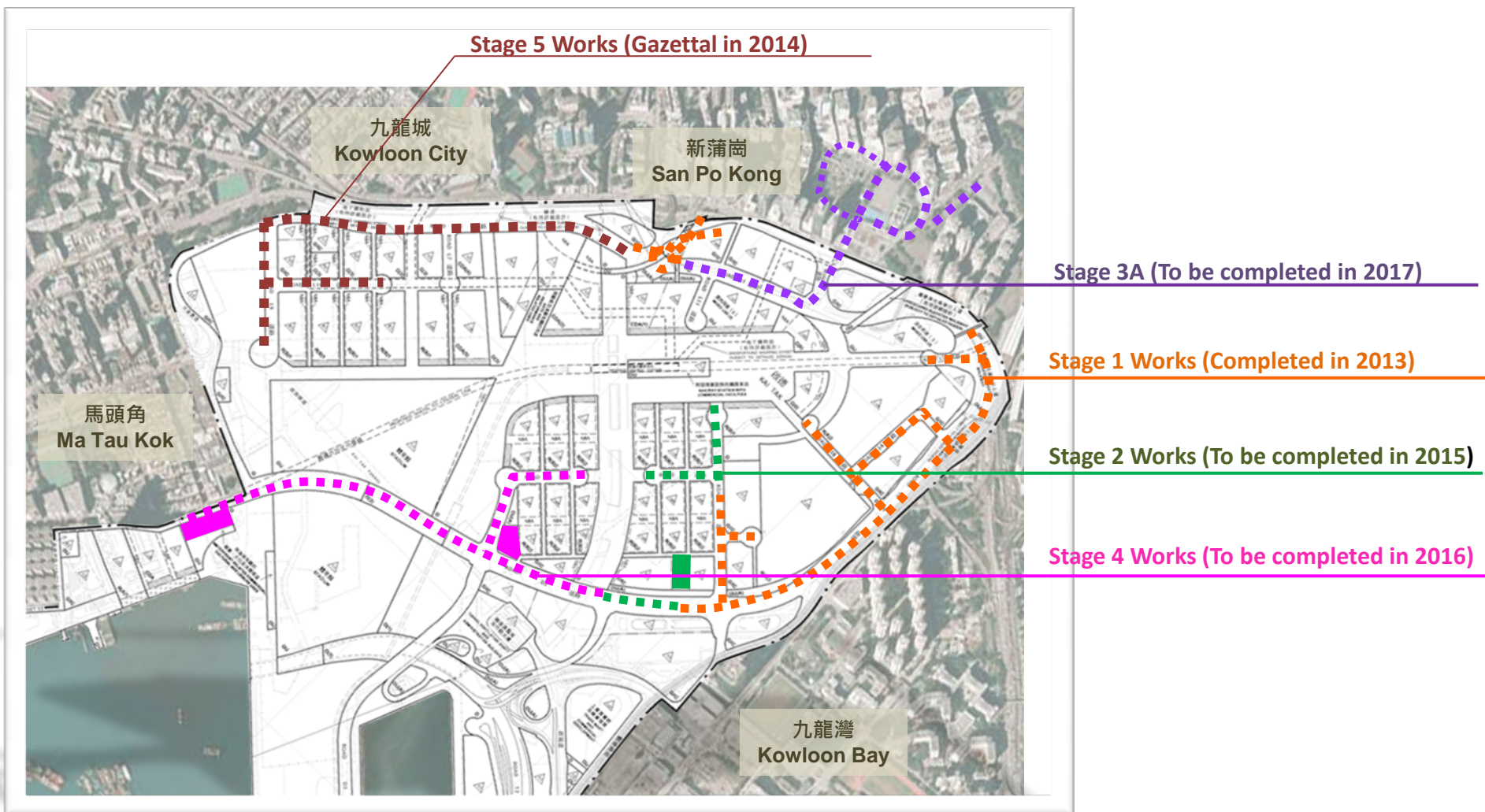


- The remaining dredging works aimed at completion by Oct 2015.





# Infrastructure works at North Apron Area





# Trade and Industry Tower (TI Tower)



- Works commenced on 16 Jan 2012 for completion by Apr 2015
- Construction of superstructure in progress



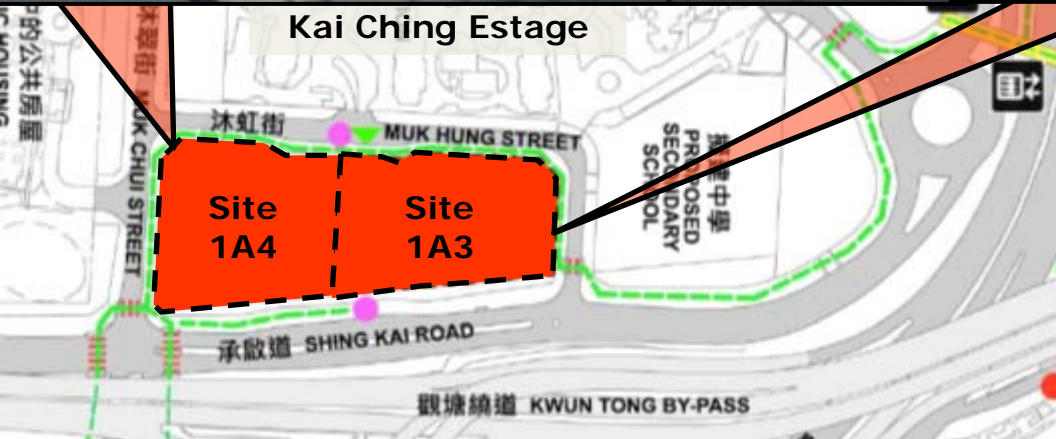


# Two Primary Schools in Sites 1A3 & 1A4

Po Leung Kuk Stanley Ho Sau Nan Primary School



S.K.H. Yat Sau Primary School & S.K.H. Ching Shan Primary School

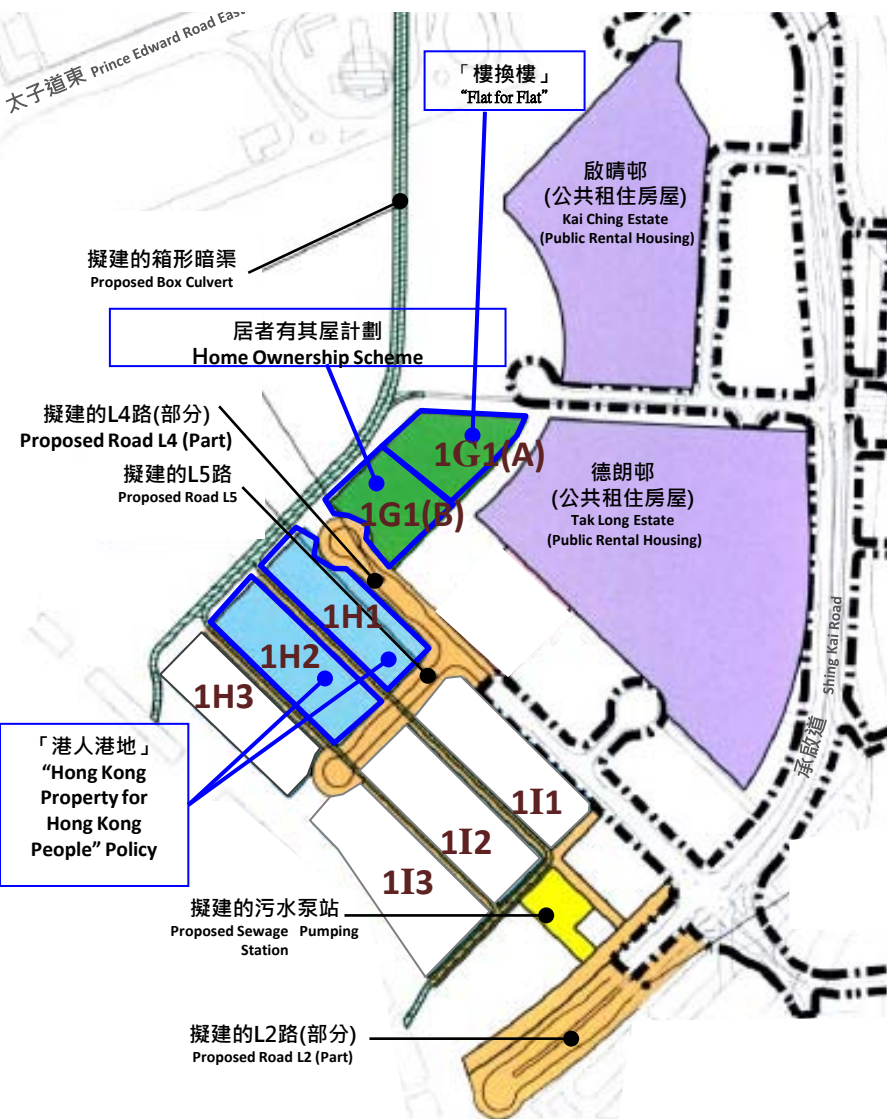


- Works to commence in end Nov 2013 for completion by Sep 2015





# Infrastructure Works for Early Disposal of Residential Sites



- Stage 1 Infrastructure Works to facilitate PRH developments and disposal of Site 1G1 completed
- Stage 2 Infrastructure Works to facilitate disposal of Sites 1I1 to 1I3 and 1H1 to 1H3 completed



# Kwun Tong Promenade – Stage 2



- Works commenced on 18 Feb 2013 for completion by end 2014.

# Multi-purpose Sports Complex



- Planned to complete by 2019/20



# Shatin to Central Link

Kai Tak Station



To Kwa Wan Station



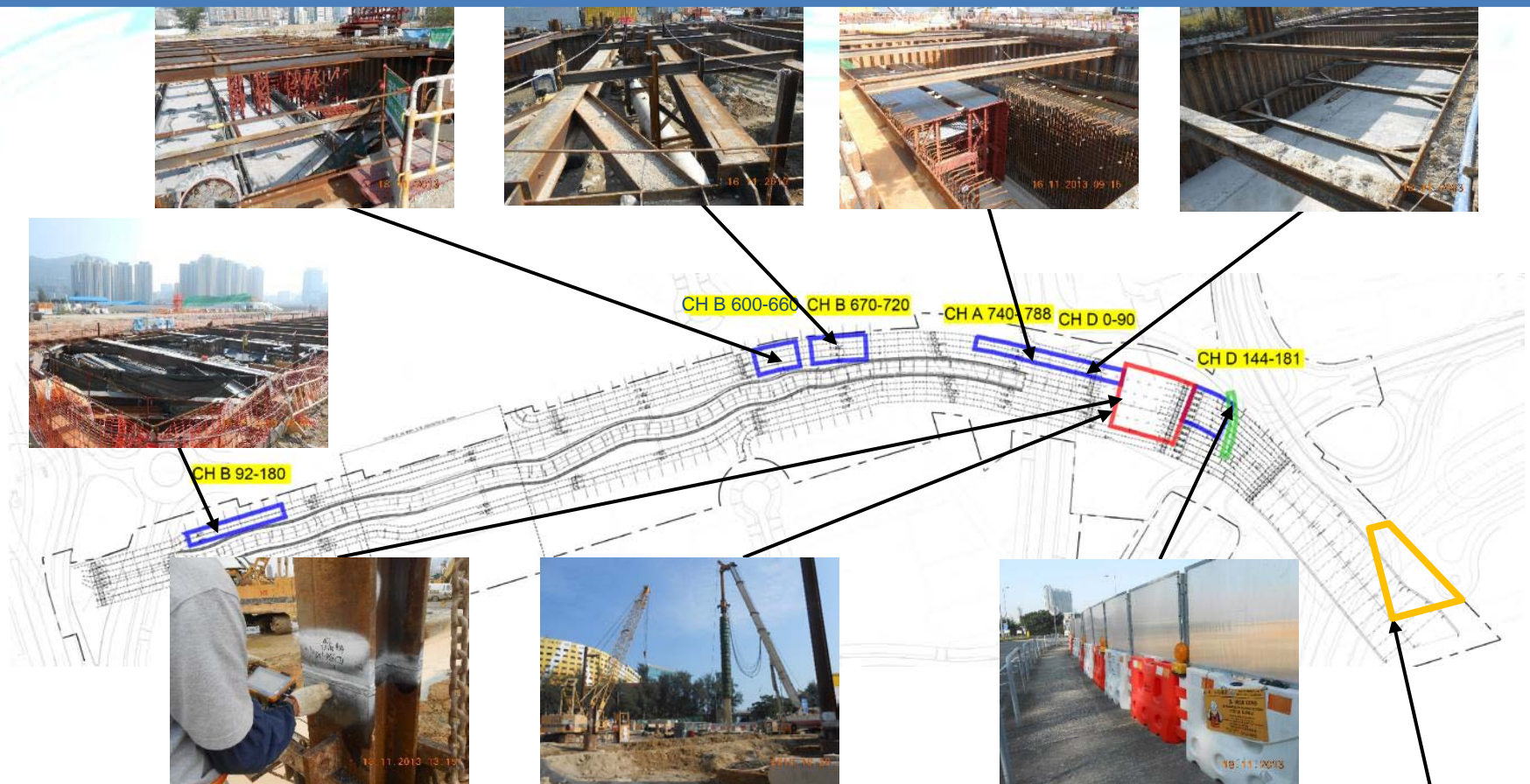
Works within KTD commenced in Aug 2012 for completion by 2018:-

- Works at Kai Tak Station started in August 2012; and
- Piling and open cut at To Kwa Wan Station in full swing






# Kai Tak River (Kai Tak section)



 Construction of Box Culvert

 Construction of Open Channel

 Pre-bored H-piles works at DC1

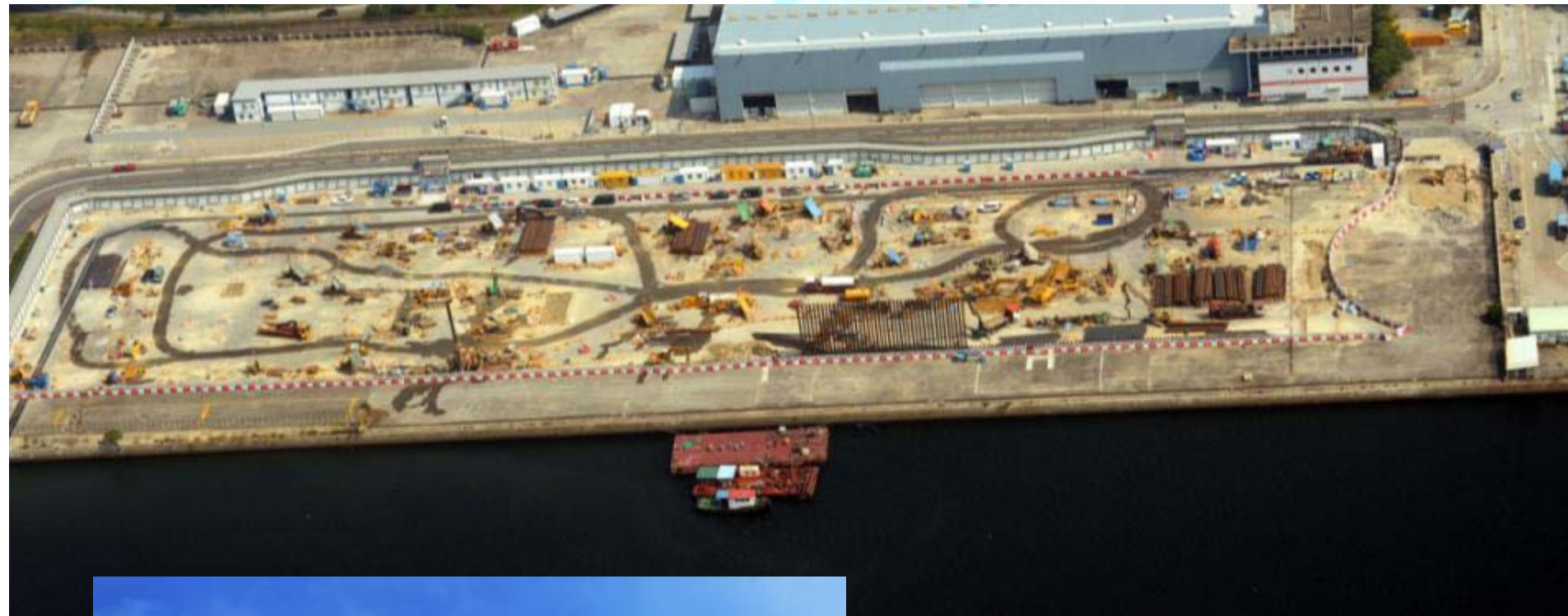
 TTA at Kai Cheung Road

- Reconstruction and upgrading works commenced on 31 January 2013
- Phased completion between 2016 and 2018





# Centre of Excellence in Paediatrics



- Works commenced in August 2013 for completion in June 2017.



# Environmentally Friendly Linkage System



## 連繫九龍東 環保連接系統 Connecting Kowloon East Environmentally Friendly Linkage System

第二階段公眾諮詢摘要  
Stage 2 Public Consultation Digest



- Stage 2 Public Consultation commenced on 28 Oct 2013, for completion on 4 Feb 2014

