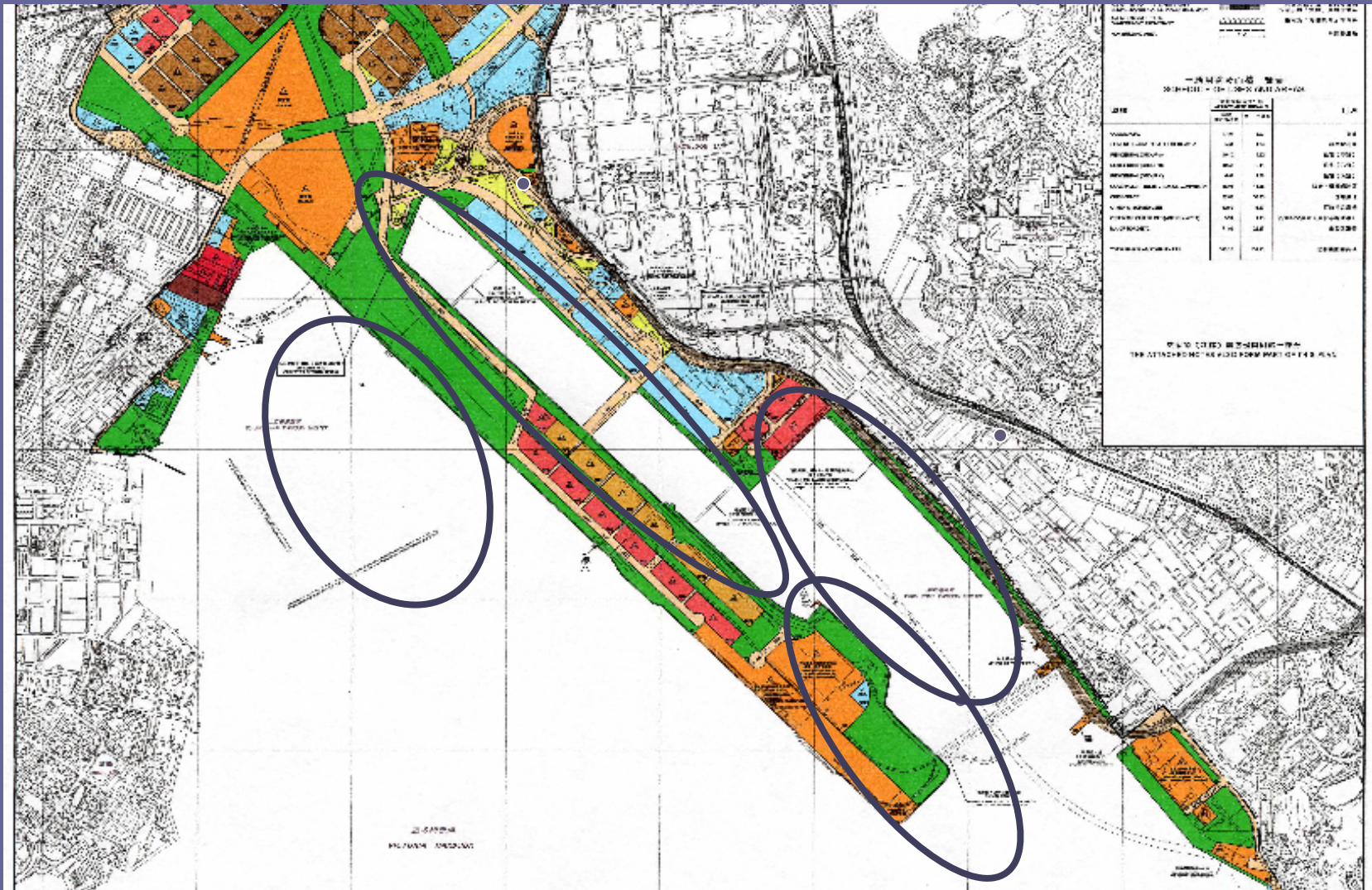


# **Proposed Kai Tai International Water Sports Centre**

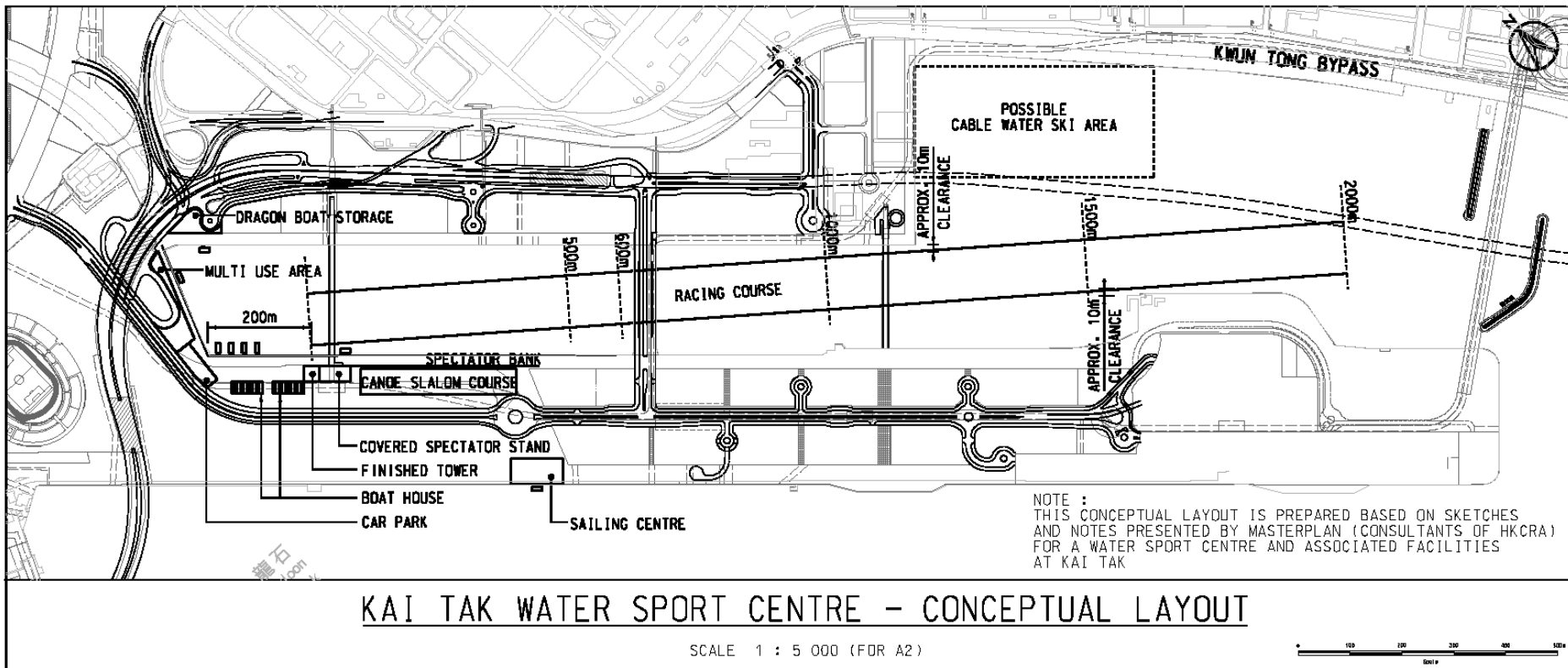
The Provisional Hong Kong Water Sports Council

27 November 2012

# Four Activity Zones : To Kwa Wan, Kai Tak Approach Channel, Runway Park and Kwun Tong Promenade Impact on Adjacent Land



# Initial Proposed Conceptual Layout

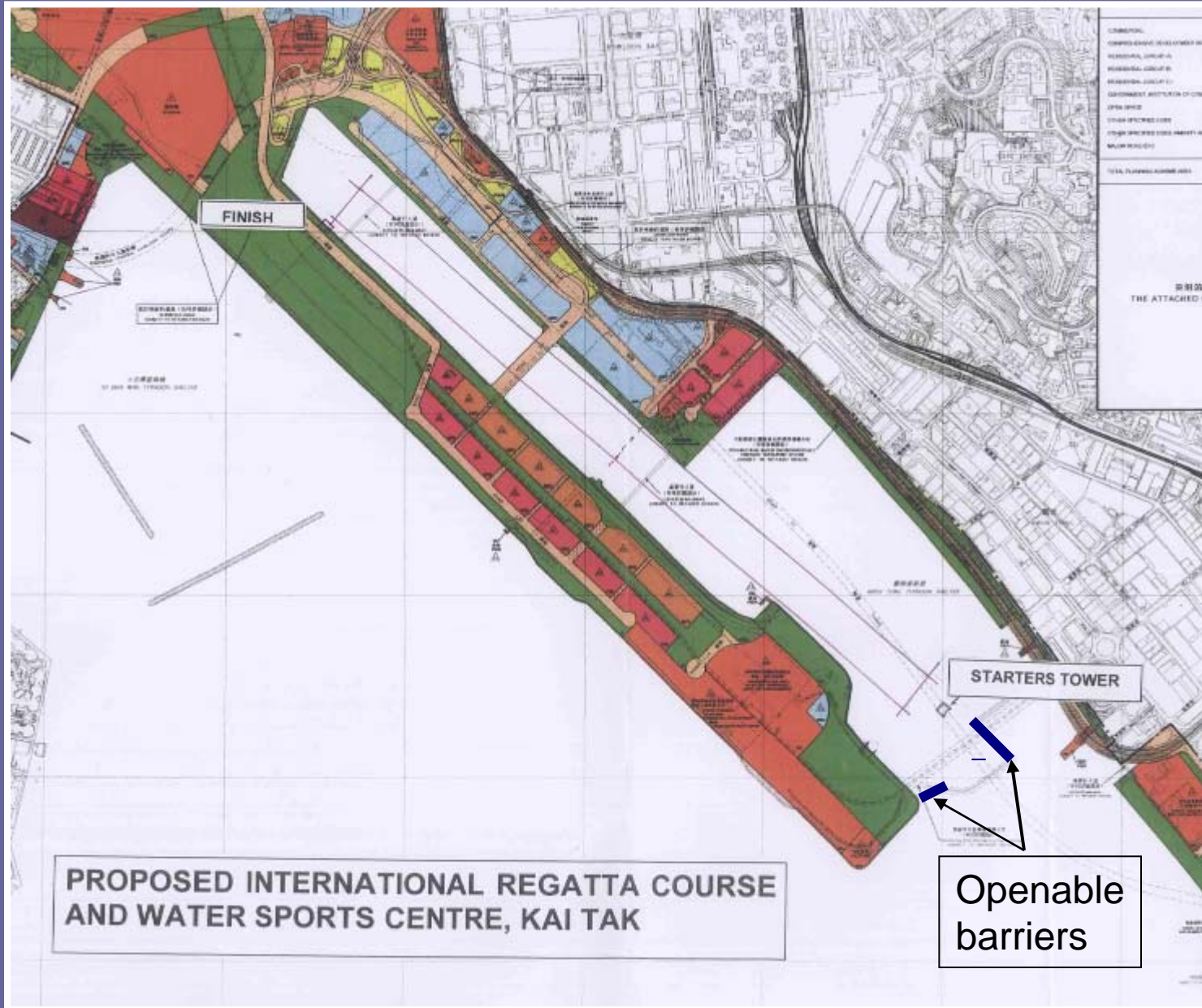




# Cable Water Ski Venue Kwun Tong Promenade



# Openable Barriers At Typhoon Shelter entrance required to meet International Standards



Partial removal of 'Bulge' would provide a better alignment

Openable barriers



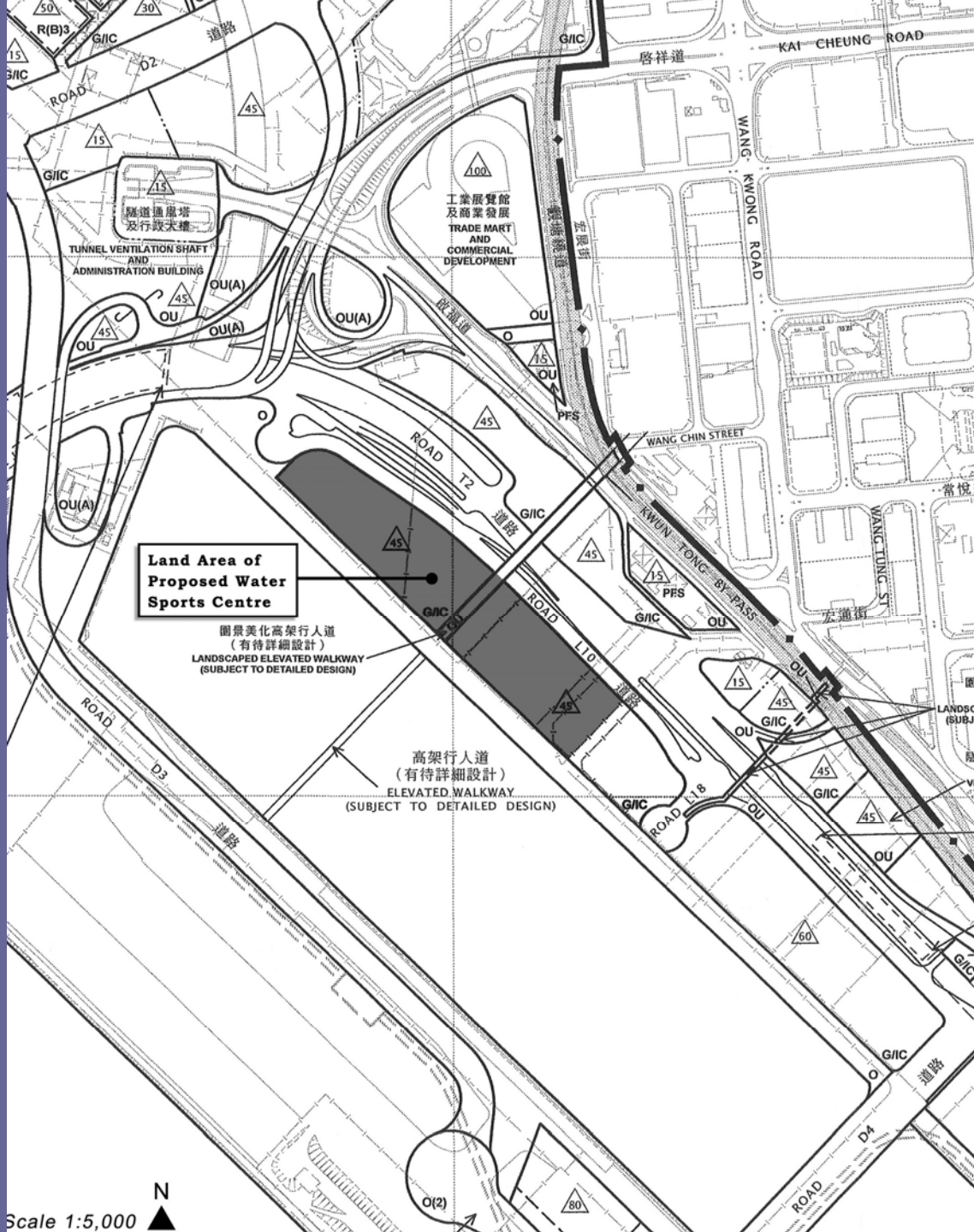
**Proposed Sailing Centre is similar to LCSD Water Sports Centres**



## Kai Tak OZP para. 7.1.1

Subject to resolving technical and operation issues in particular the water quality issue, there is also the opportunity to accommodate a variety of water sports/recreational activities in the KTAC and the adjoining water bodies to further strengthen the role of Kai Tak as a hub for sports and leisure activities. The type and spatial requirements of the water sports/recreational uses and their land based facilities as well as their interface with the waterfront promenade would be further explored.





Location of Proposed Water Sports Centre at G/IC Zone



Kai Tak is a unique resource which could easily become a major Water Sports Venue



# Sha Tin Rowing Centre

## Inadequate space for boat storage and operations





## Toda in Tokyo

Spectator Bank at  
Finish Area



Race Start Area





**Kai Tak looking North From the Bridge**  
**Suitable for holding international events**

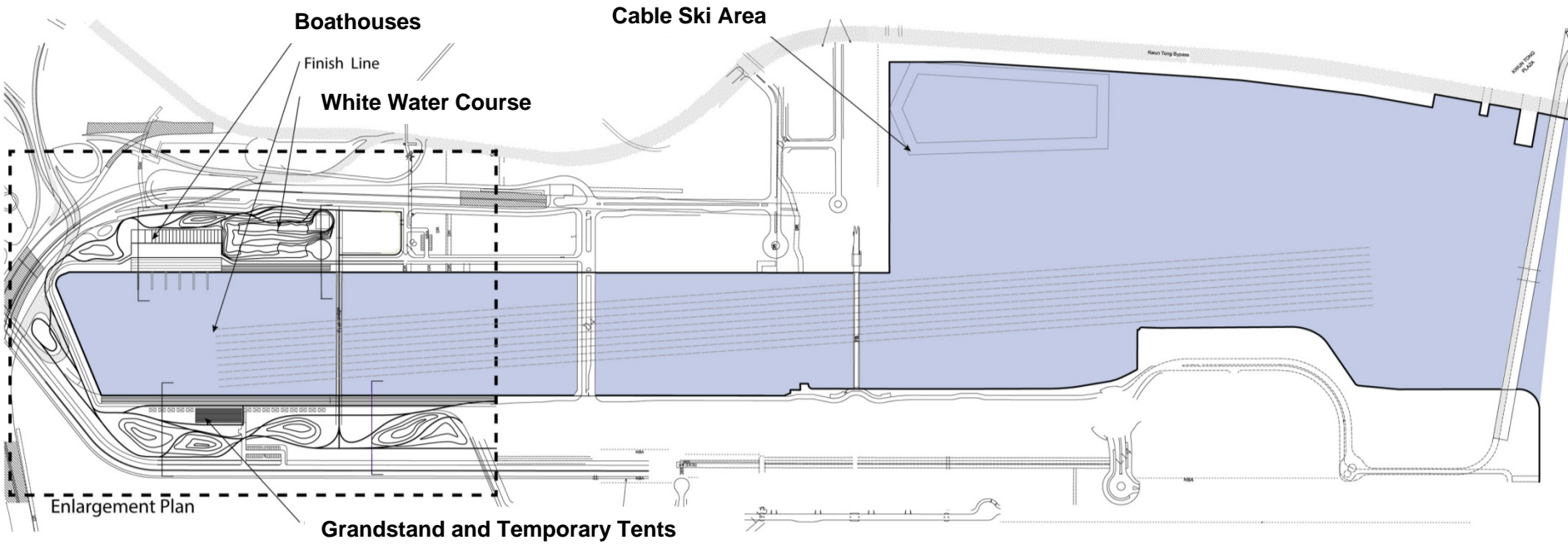


# Toda in Tokyo

## Olympic Rowing Event





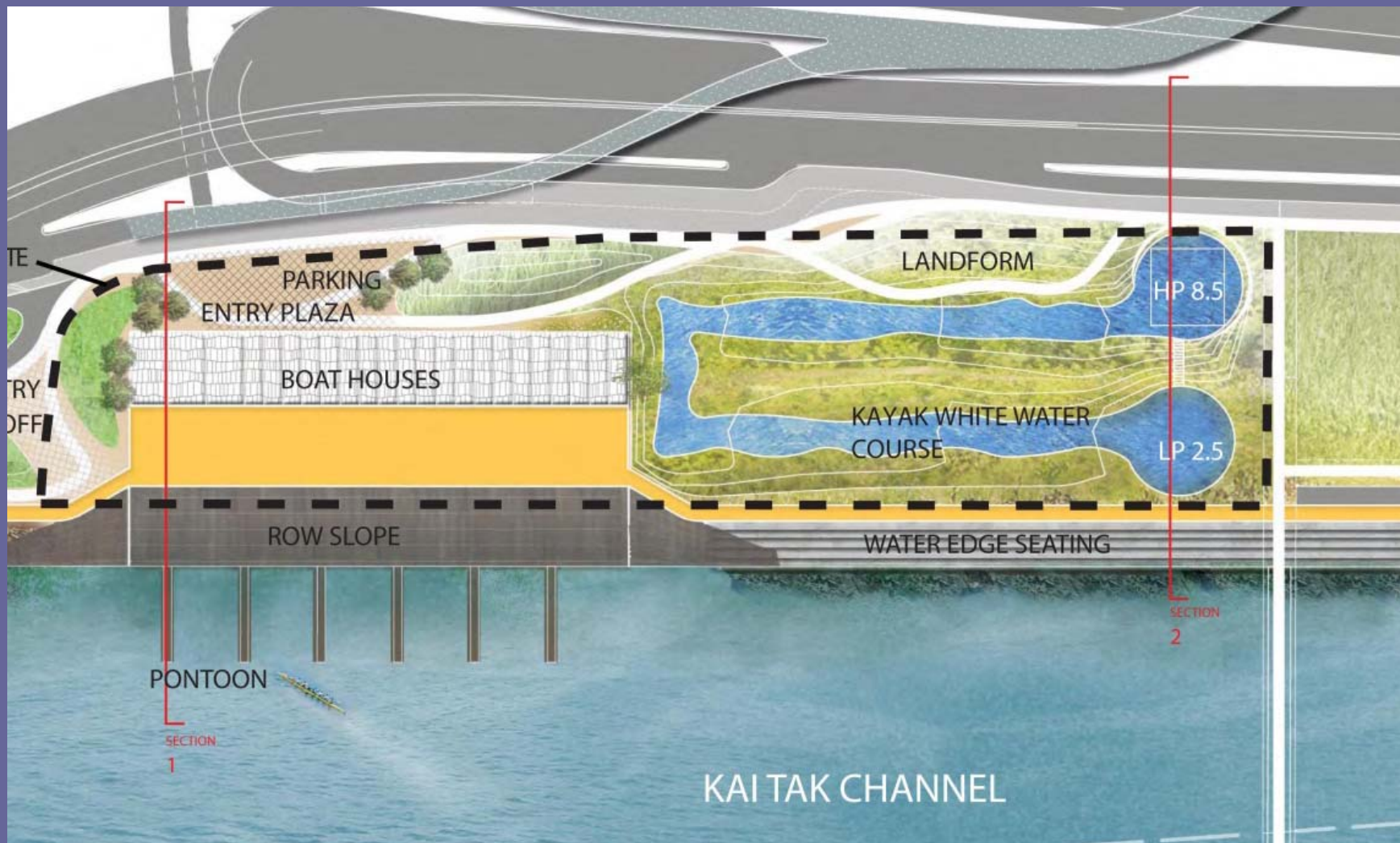


**Conceptual Layout of Whole Kai Tak Water Sports Centre**

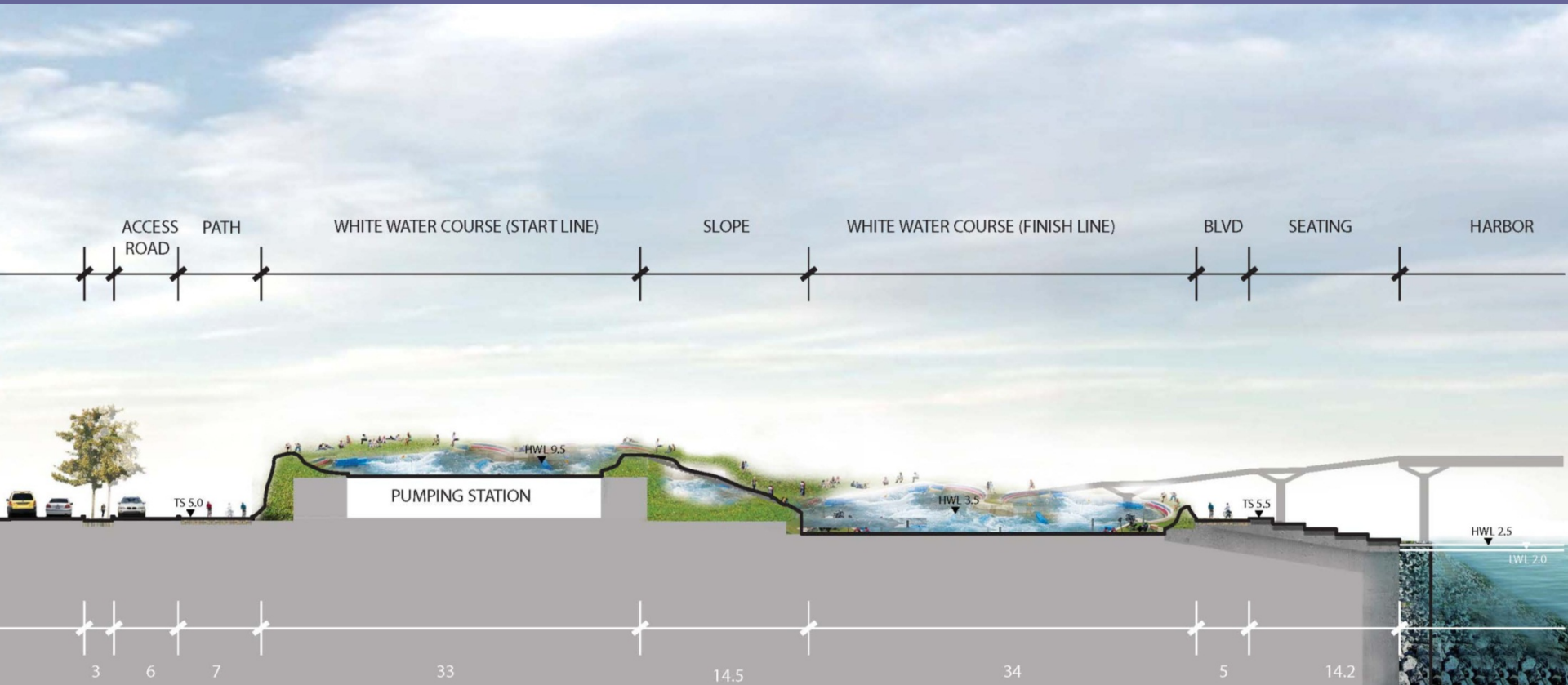




**Potential White Water Course Environment and Activities**

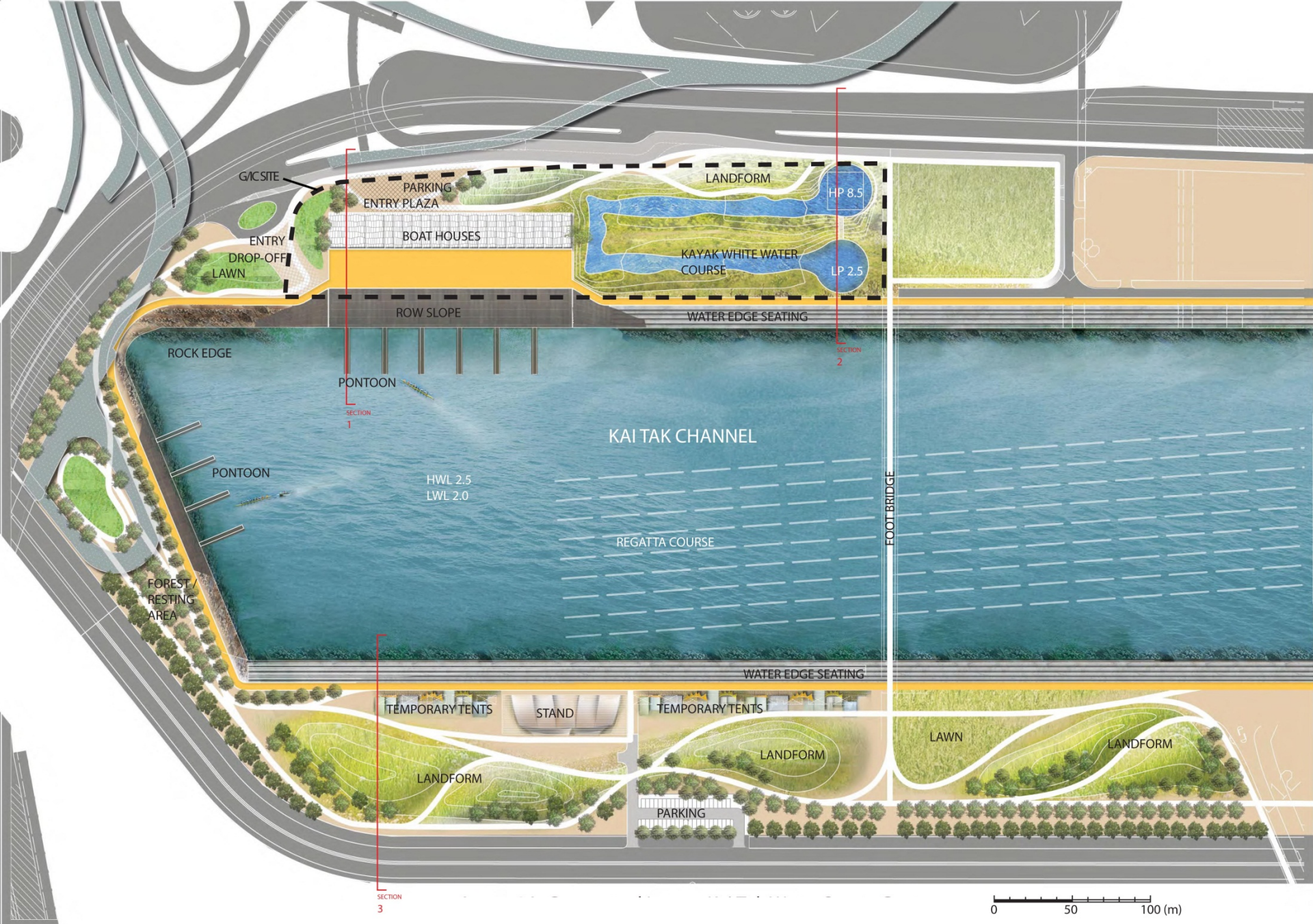


Conceptual Layout of Kai Tak Water Sports Centre



**Section of White Water Course**





Conceptual Layout of Kai Tak Water Sports Centre

**End**