



起動九龍東 Energizing Kowloon East

Harbourfront Commission
Task Force on Kai Tak Harbourfront Development

Place Making along Kwun Tong Waterfront

發展局工務科 Works Branch, Development Bureau
起動九龍東辦事處 Energizing Kowloon East Office

November 2012



發展局工務科
Works Branch, Development Bureau



A vibrant waterfront has been agreed by all quarters as one of the key factors contributing to Energizing Kowloon East. Among the 10 Main Tasks in the Conceptual Master Plan version 2.0, Task 5 and Task 10 advocate respectively the face-lifting of the waterfront along Hoi Bun Road and bringing vibrant activities to the waterfront.



To transform the Kwun Tong waterfront along Hoi Bun Road where is presently dominated by vacant land along the coast and underneath the Kwun Tong Bypass, EKEO has formulated a comprehensive revitalization strategy which comprises the following key action components:

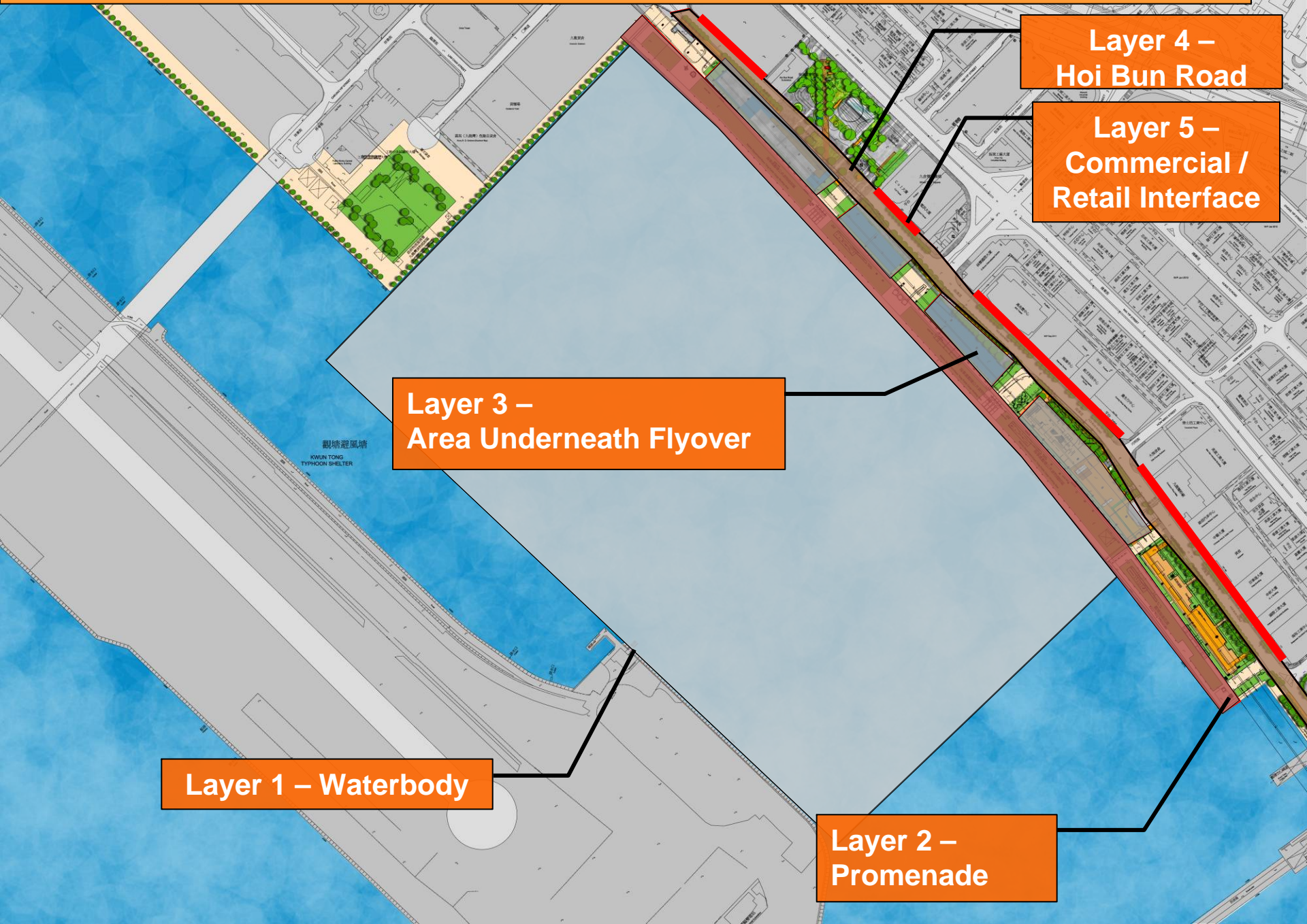
- 1. Identifying opportunities to bring in exciting activities (e.g. boating/marina development) for vibrant use of the water body between the Kwun Tong waterfront and the ex-runway;**
- 2. Face-lifting of the Kwun Tong waterfront by turning the land vacated from cargo handling activities to attractive waterfront promenade (stage 1 has been completed while works for stage 2 will commence by early 2013 for completion by end 2014);**



3. Turning the vacant and unused land underneath the Kwun Tong Bypass into informal venue for arts/cultural uses and land-side supporting facilities for the identified vibrant use of the water body;
4. Beautification of Hoi Bun Road by transforming the road to a tree-lined boulevard and connecting the Hoi Bun Road Park directly with the waterfront; and
5. Cultivating a partnership with developers along Hoi Bun Road for vibrant use of the ground floor units of their buildings to commensurate with the ambience of the waterfront.



Place Making along Kwun Tong Waterfront



Layer 1 – Waterbody

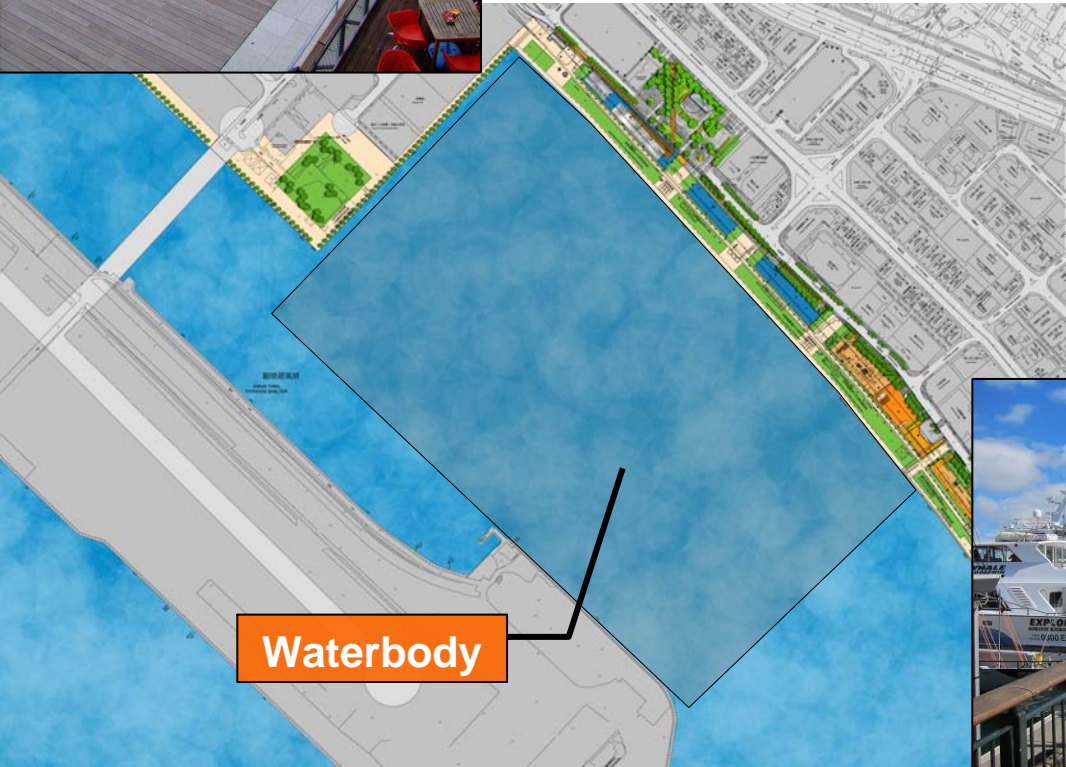
Layer 3 – Area Underneath Flyover

Layer 2 – Promenade

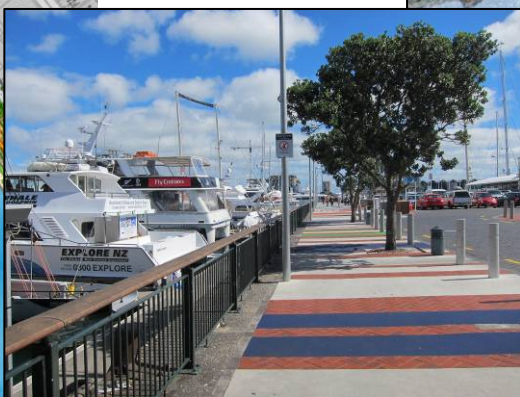
Layer 4 – Hoi Bun Road

Layer 5 – Commercial / Retail Interface

Place Making along Kwun Tong Waterfront



Waterbody



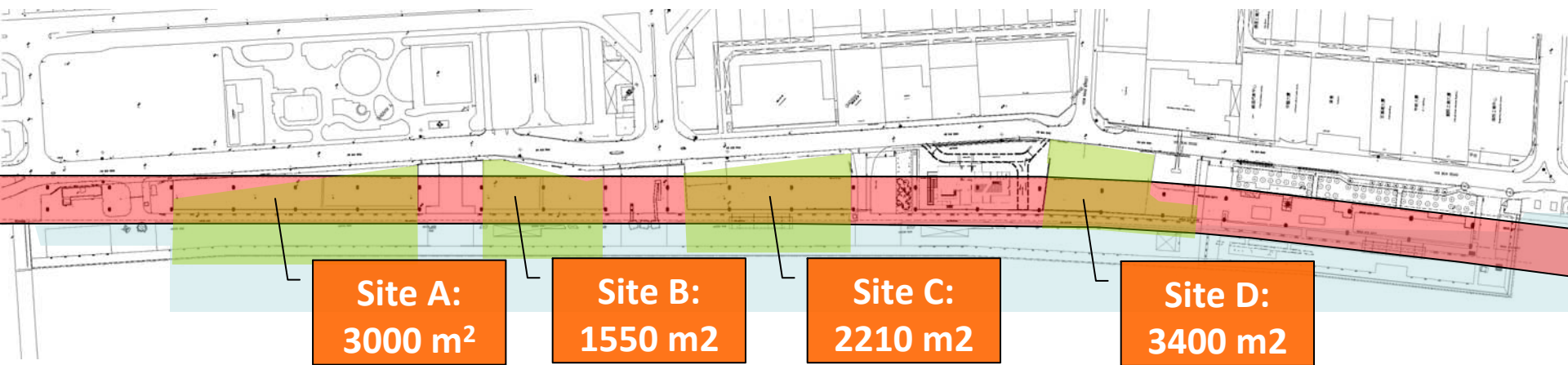
ING
SIGN



- Kwun Tong Promenade Phase 1 already completed while Phase 2 works to commence in early 2013 for completion by end 2014

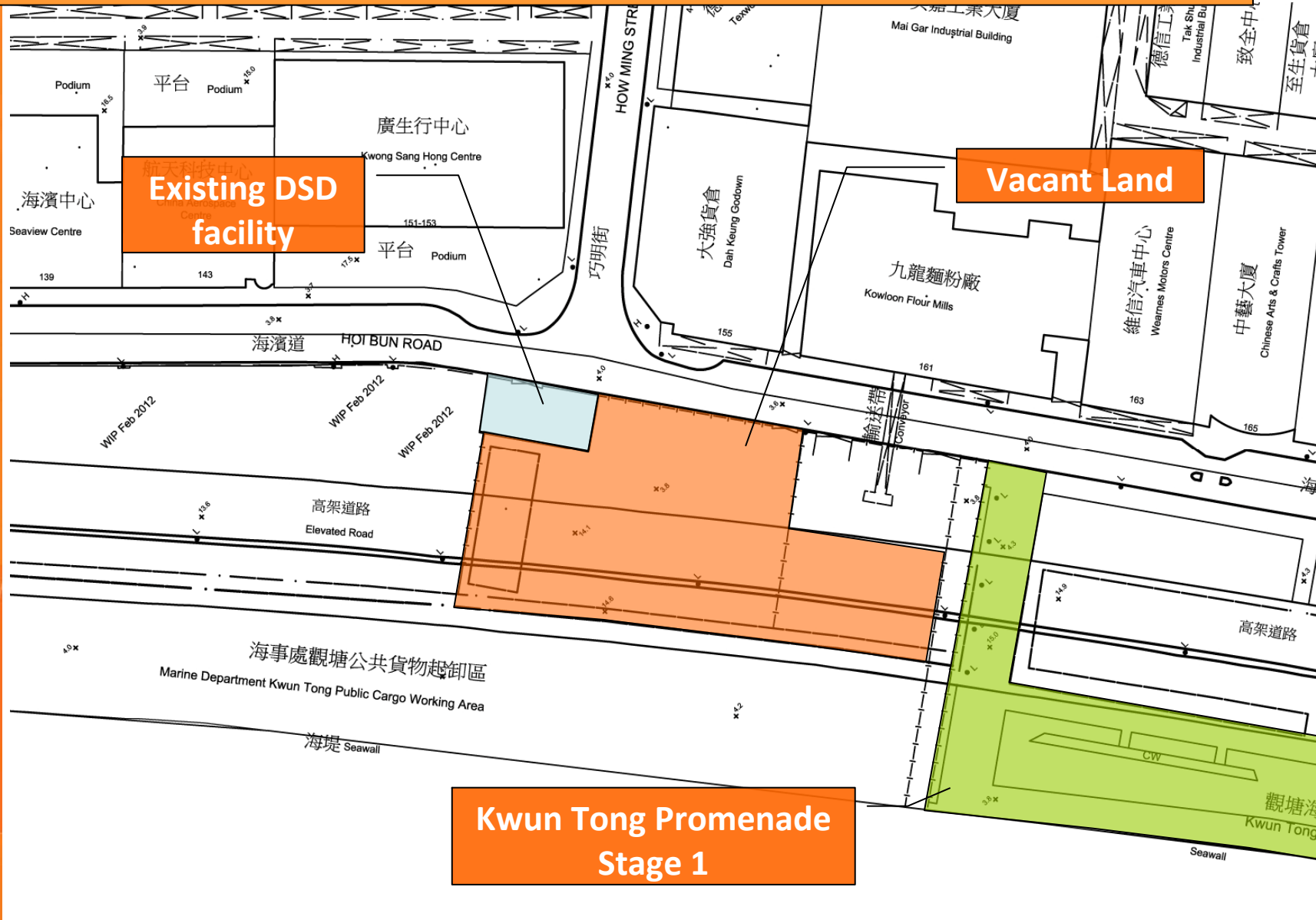


Place Making along Kwun Tong Waterfront



Layer 3 - Place-making under flyover transform idle land to a venue for arts and culture

Place Making along Kwun Tong Waterfront



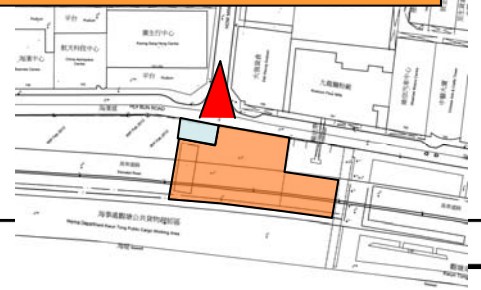
Place Making along Kwun Tong Waterfront



Place Making along Kwun Tong Waterfront

(Taken on June 2012)

SITE D



Existing WSD Depot



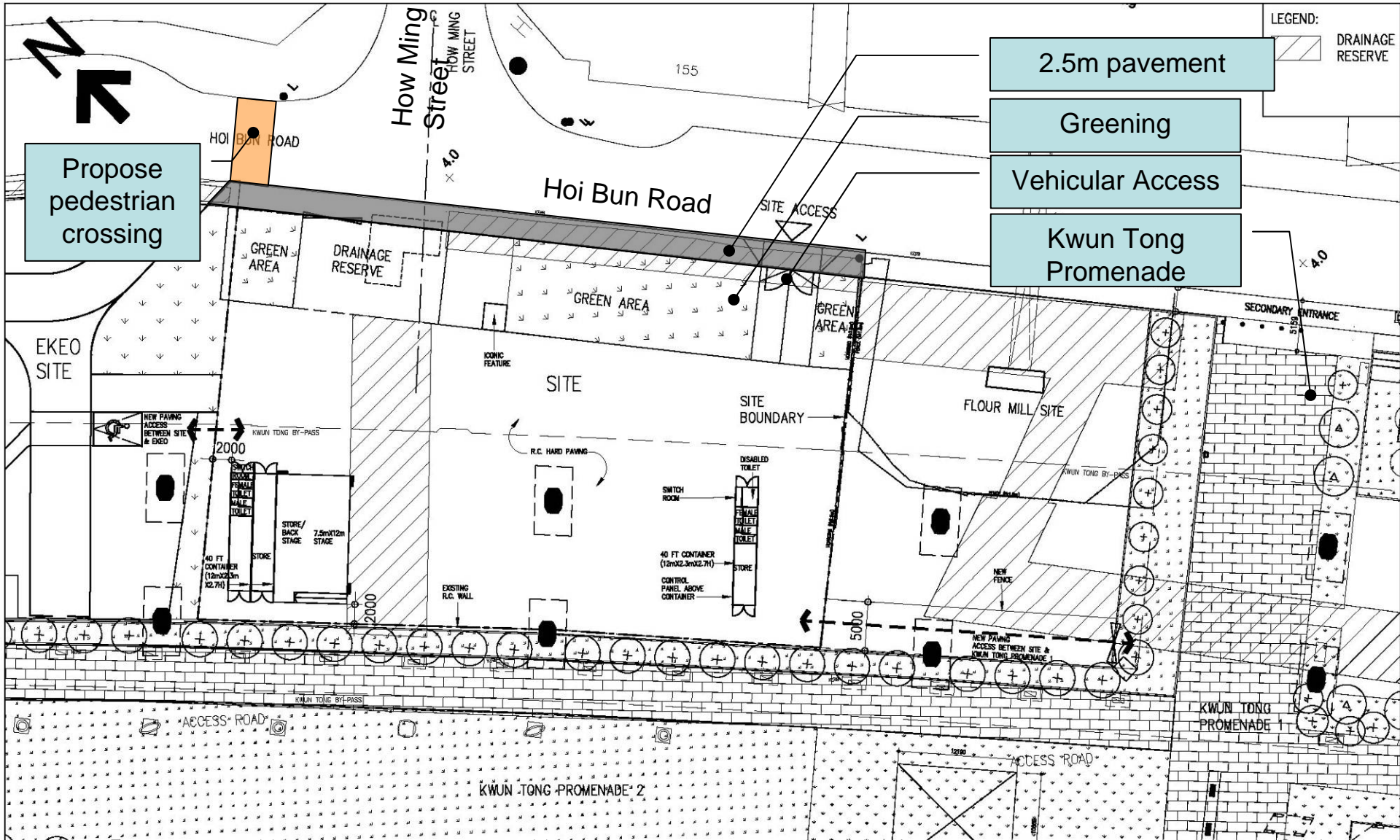
(Taken on October 2012)



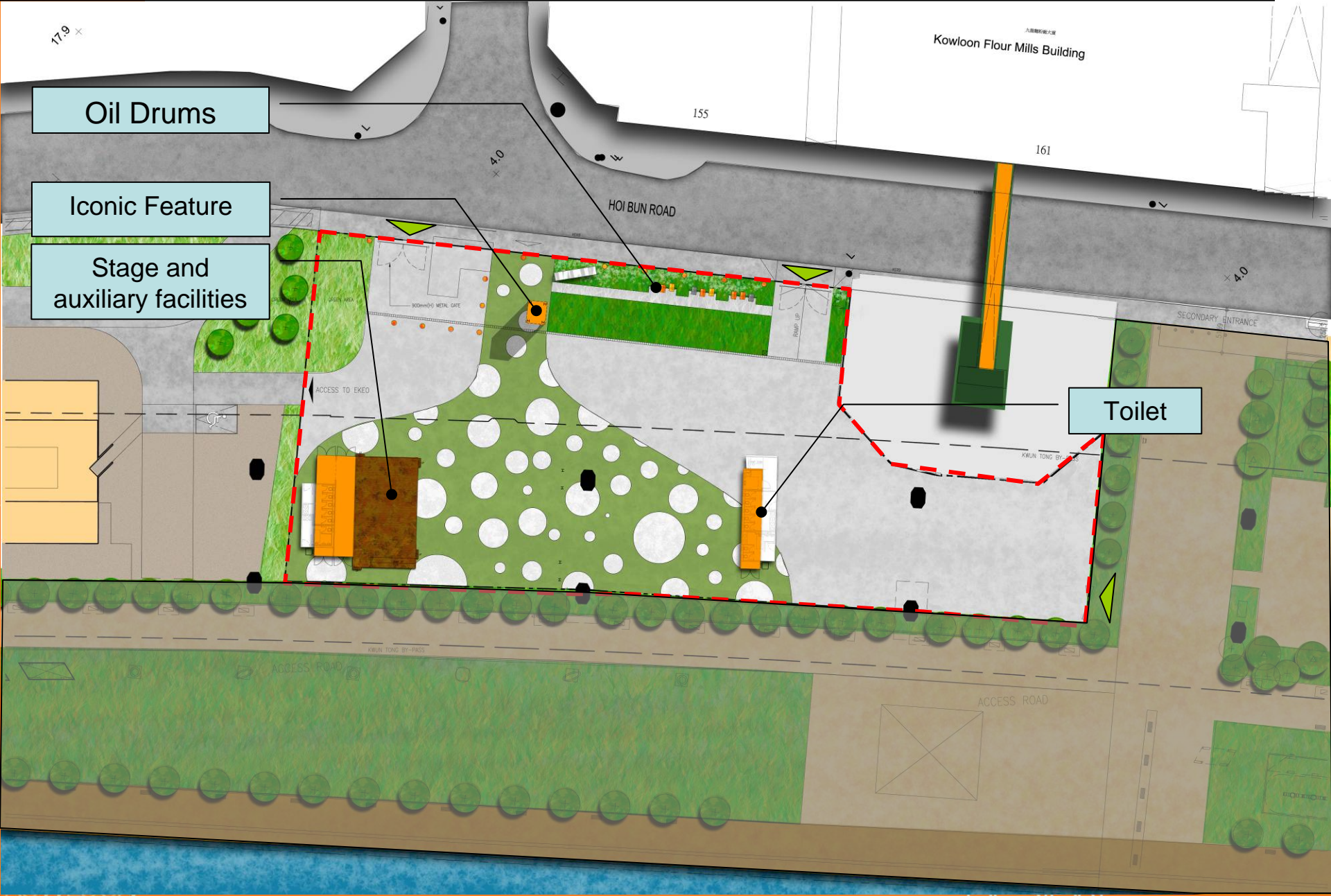
Place Making along Kwun Tong Waterfront



Place Making along Kwun Tong Waterfront



Place Making along Kwun Tong Waterfront



Place Making along Kwun Tong Waterfront

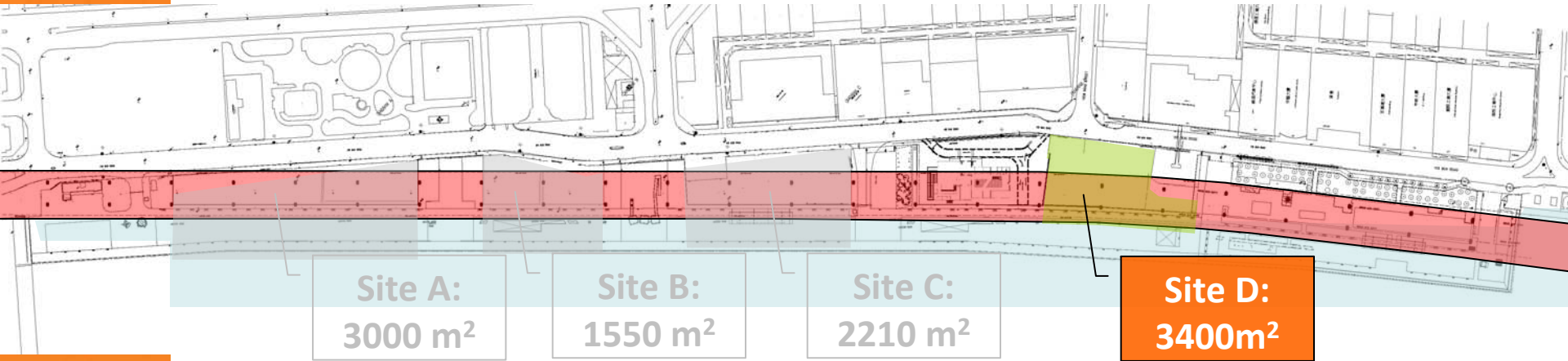


Layer 3 - Place-making under flyover transform idle land to a venue for arts and culture

Place Making along Kwun Tong Waterfront



Layer 3 - Place-making under flyover transform idle land to a venue for arts and culture



LCSD's Youth Band Marathon (20 Jan 2013)



Layer 3 - Place-making under flyover transform idle land to a venue for arts and culture

Night City Challenge jointly organised with

(26 Jan 2013)



Good business for local stalls while participants experience "local" life



Participants learn flower plaque making from a resident craftsman in Yaumatei



Everyone reflects on their learning in the final debriefing

啟
德
樓
換
樓
通

Response Exhibition for Venice Biennale 2012

(March 2013)



**INTER RA CITIES:
GHOSTWRITING
THE FUTURE**



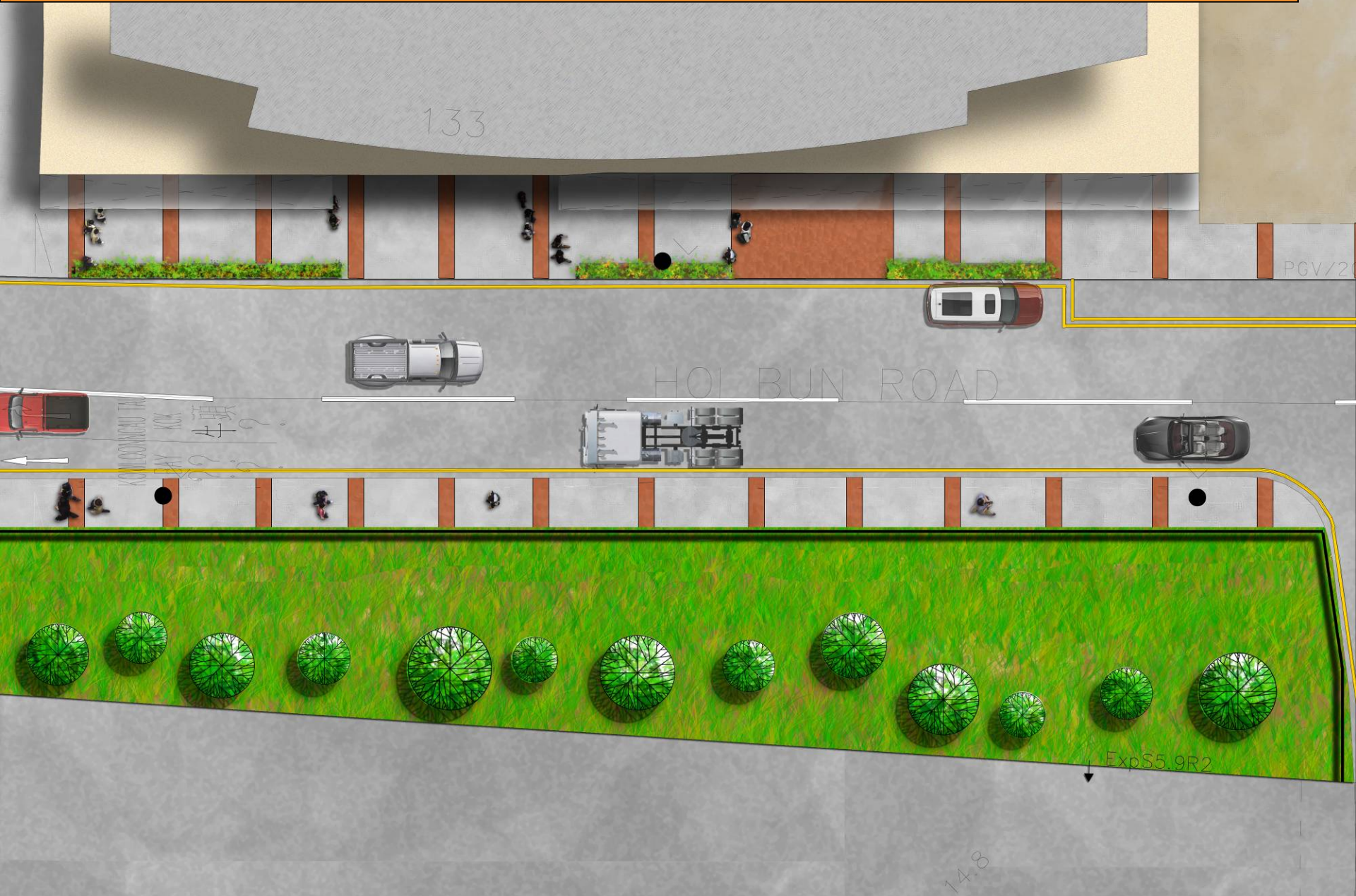


Place Making along Kwun Tong Waterfront



Layer 4 – Realignment of Hoi Bun Road into a Tree line Boulevard

Place Making along Kwun Tong Waterfront



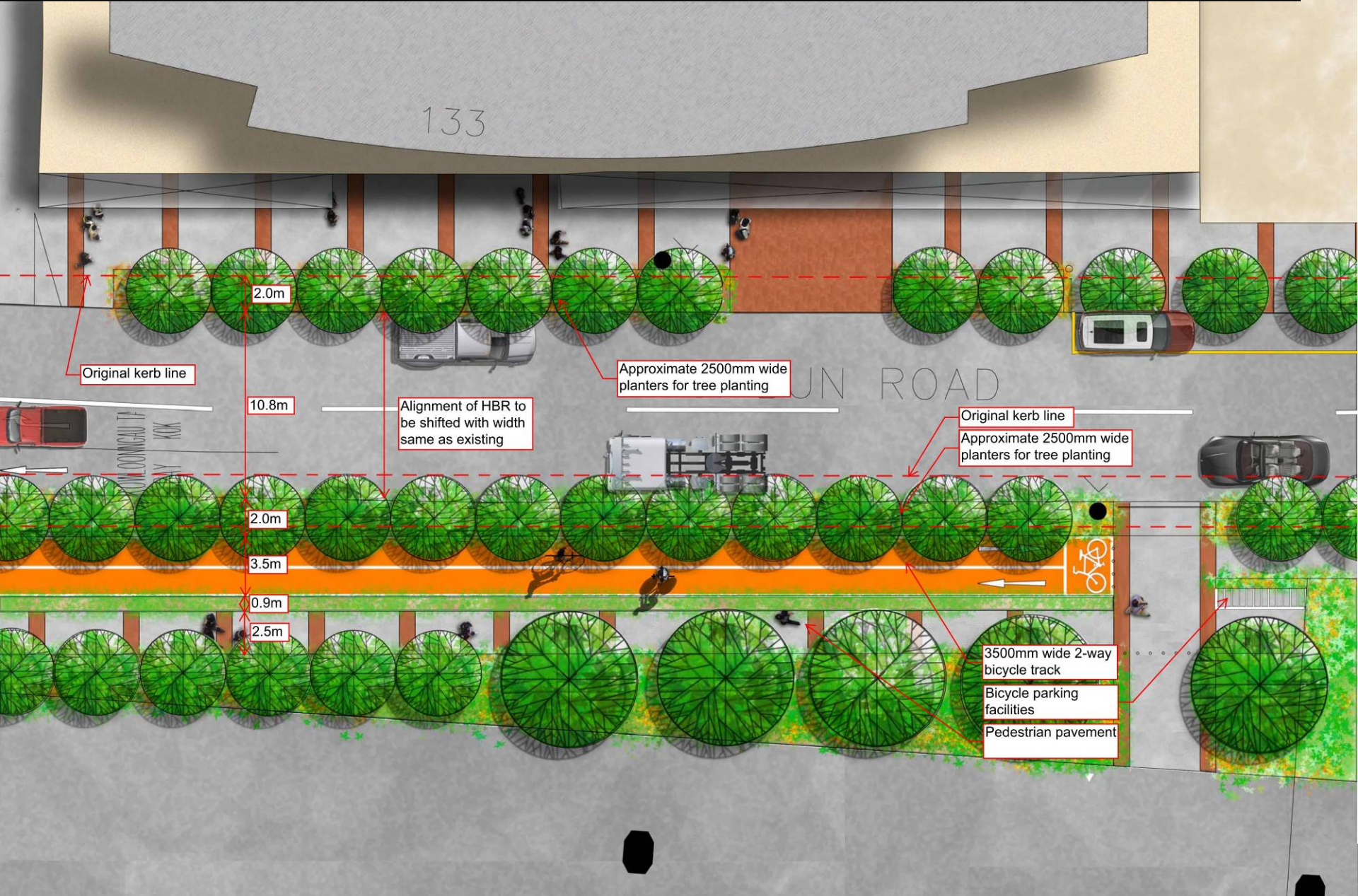
Layer 4 – Realignment of Hoi Bun Road into a Tree line Boulevard

Place Making along Kwun Tong Waterfront



Layer 4 – Realignment of Hoi Bun Road into a Tree line Boulevard

Place Making along Kwun Tong Waterfront



Layer 4 – Realignment of Hoi Bun Road into a Tree line Boulevard

INDO

多謝!

Thank You!

Connectivity

Design

Diversity

Branding