



**Cross-boundary Heliport
in the Kai Tak
Development Area**

**Transport and Housing Bureau
Civil Aviation Department
3 August 2011**

Cross-boundary Heliport in the Kai Tak Development Area

- Background
- Suitable site
- Impact on nearby users
- Way forward



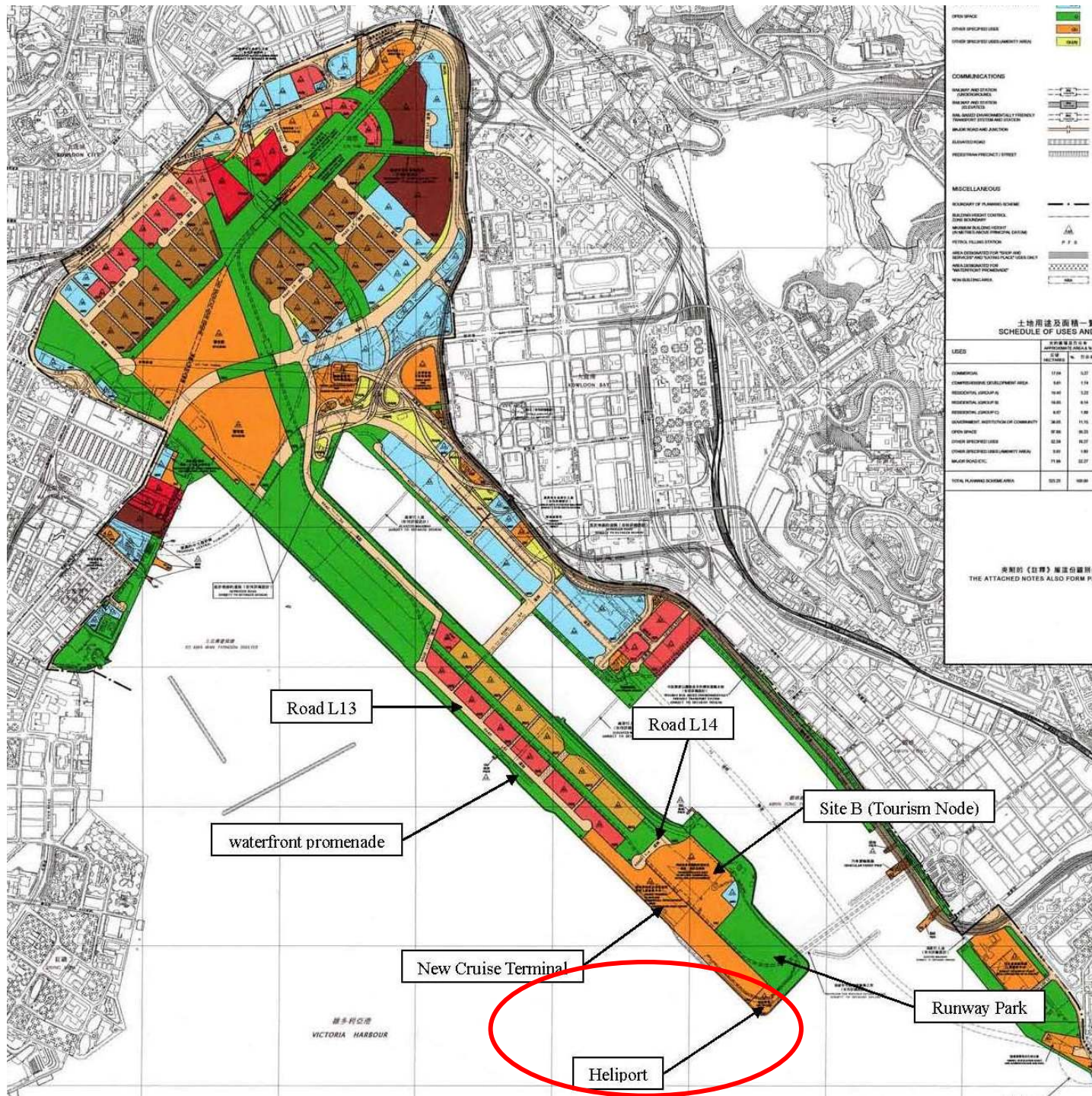
Background

- Expansion of Macau Ferry Terminal completed in October 2009
- Insufficient to meet demand beyond 2020



Suitable Site

- Prerequisites
 - with customs, immigration and health quarantine facilities
 - immediate access to the city centre
- Kai Tak Development Area
 - reserved in the Kai Tak Outline Zoning Plan No. S/K22/2
 - abutting the cruise terminal for synergy
 - hotel, shopping and entertainment facilities available



OPEN SPACE

- OTHER SPECIFIED USES
- OTHER SPECIFIED DEVELOPMENT AREA

COMMUNICATIONS

- RAILWAY AND STATION
- CONDUITWAYS
- ROADWAY AND UTILITY
- CONDUITS
- RAIL-BASED ENVIRONMENTALLY FRIENDLY TRANSPORT SYSTEM AND SYSTEM
- RAILWAY ROAD AND JUNCTION
- ELEVATED ROAD
- PEDESTRIAN PROMENADE STREET

MISCELLANEOUS

- BOUNDARY OF PLANNING SCHEME
- BUILDING HEIGHT CONTROL
- ZONE BOUNDARY
- MAXIMUM BUILDING HEIGHT
- MINIMUM BUILDING HEIGHT
- MINIMUM FLOOR LEVEL
- AREA DESIGNATED FOR TRAMP AND BICYCLE AND TOTAL PLACE USES ONLY
- AREA DESIGNATED FOR WATERFRONT PROMENADE
- WWW.BURBANK.HK

土地用途及面積一覽
SCHEDULE OF USES AND

USES	TOTAL PLANNED SCHEME AREA	
	AREA (SQUARE METERS)	% OF TOTAL
COMMERCIAL	17.94	0.27
COMPREHENSIVE DEVELOPMENT AREA	5.85	0.09
RESIDENTIAL (GROUP A)	19.45	0.30
RESIDENTIAL (GROUP B)	10.05	0.16
RESIDENTIAL (GROUP C)	4.47	0.07
GOVERNMENT, INSTITUTIONS OF CHARITY	36.85	0.57
OPEN SPACE	87.36	1.35
OTHER SPECIFIED USES	0.24	0.00
OTHER SPECIFIED DEVELOPMENT AREA	1.07	0.02
MISCELLANEOUS	11.59	0.18
TOTAL PLANNED SCHEME AREA	653.20	100.00

參閱附《註釋》編章條文
THE ATTACHED NOTES ALSO FORM PA

Road L13

Road L14

waterfront promenade

Site B (Tourism Node)

New Cruise Terminal

Heliport

Runway Park

維多利亞港
VICTORIA HARBOUR

Suitable Site

- Leverage on supporting facilities of the cruise terminal
- Current location is appropriate
 - ✘ roof top of cruise terminal building
 - ✘ further inland



Impact on Nearby Users

- Noise impact partly shielded by cruise terminal building
- Significantly longer buffer distance from Kowloon Bay and residential blocks



Runway Park and Heliport



Southern Aerial View
南向鳥瞰圖

Way Forward

- Technical feasibility study
- Mitigation measures to minimize impact on noise, downwash and visual enjoyment
 - noise barrier
 - planting / water features (subject to aviation safety)



Way Forward

- Target operation date around mid-2015





Thank you