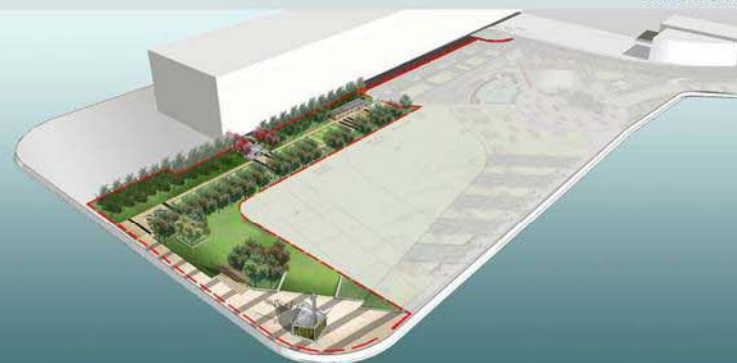




Architectural
Services
Department

JAN. 2011



Preliminary Design for Discussion

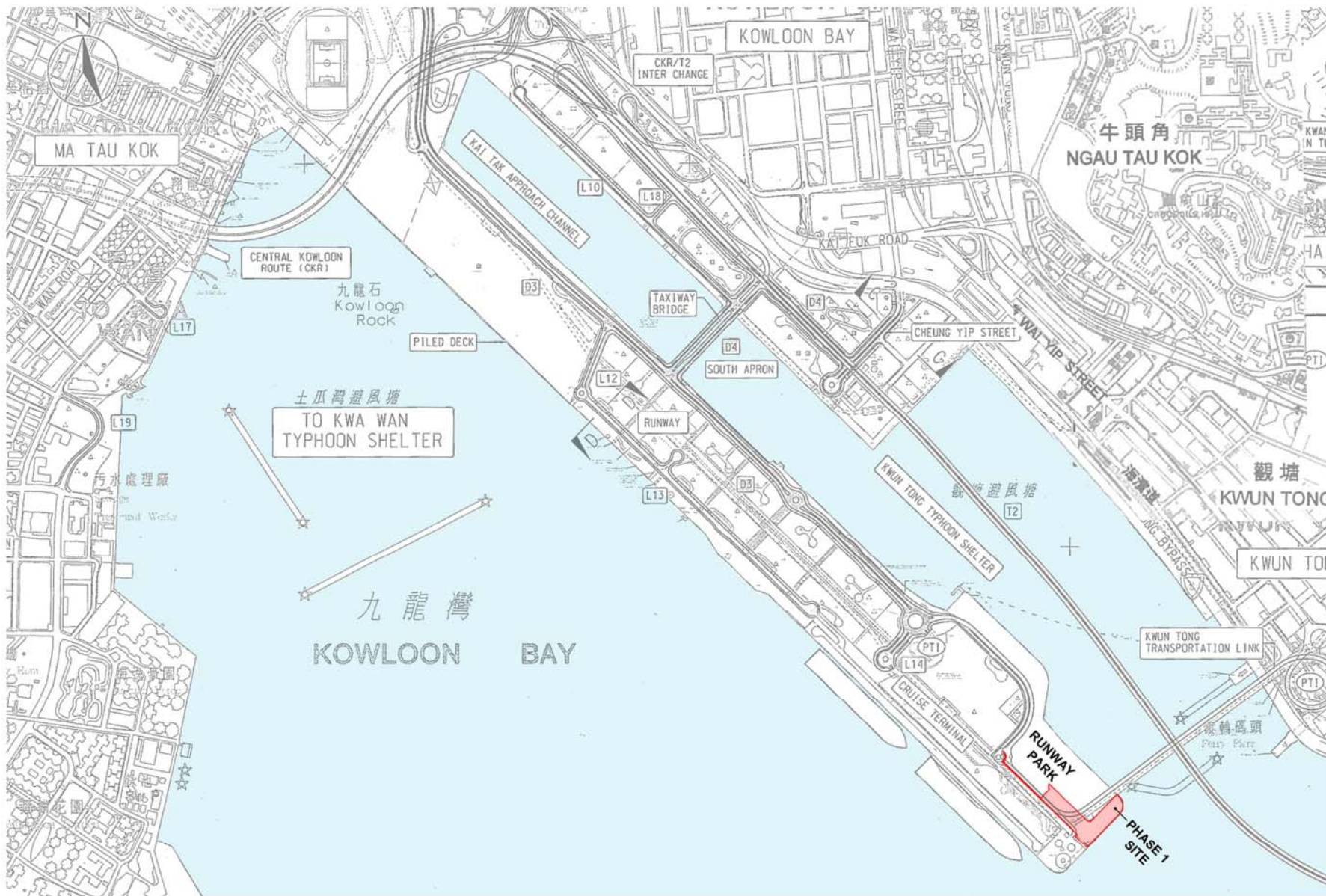
No. 9AT 022 Runway Park at Kai Tak (Phase 1), Kowloon City District

Harbourfront Commission Task Force Presentation

 **HSIN YIEH**
ARCHITECTS & ASSOCIATES LTD.

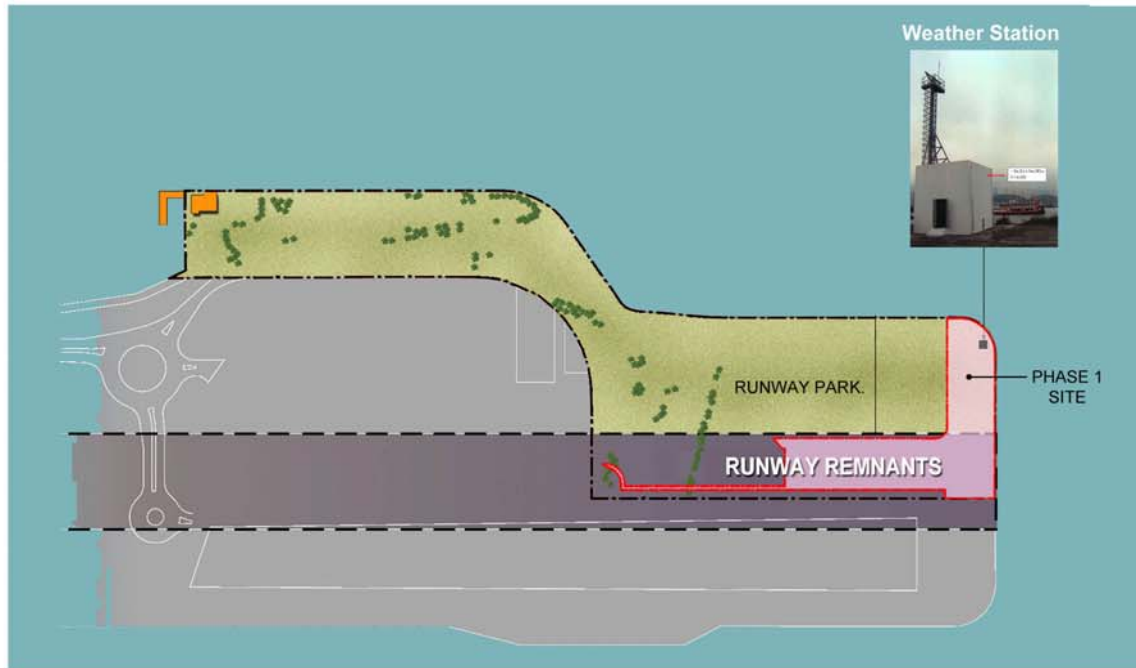
AECOM

利比 RLBI Rider Levett Bucknall



All Materials for illustration purpose only, subject to change

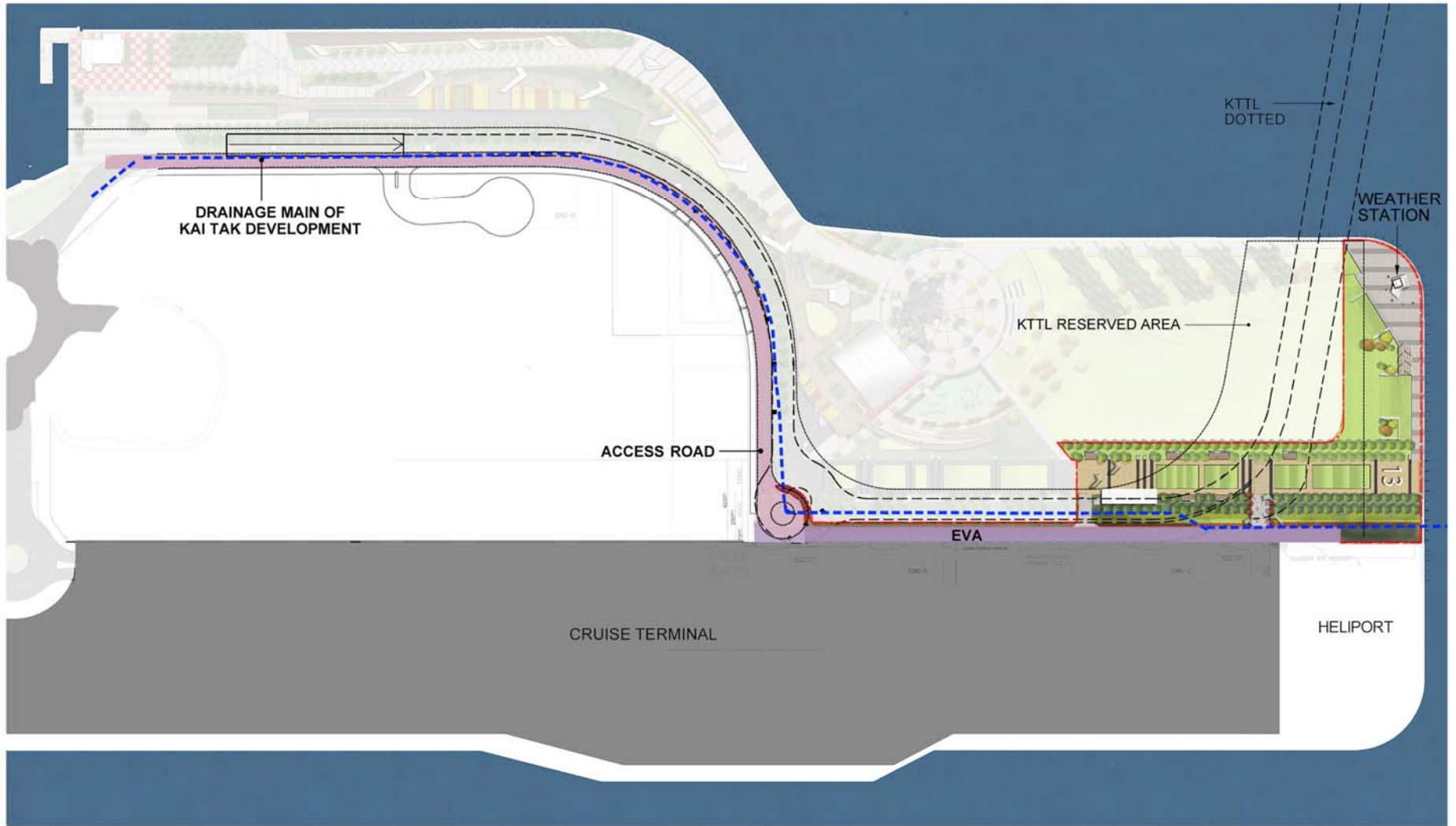
Site Location

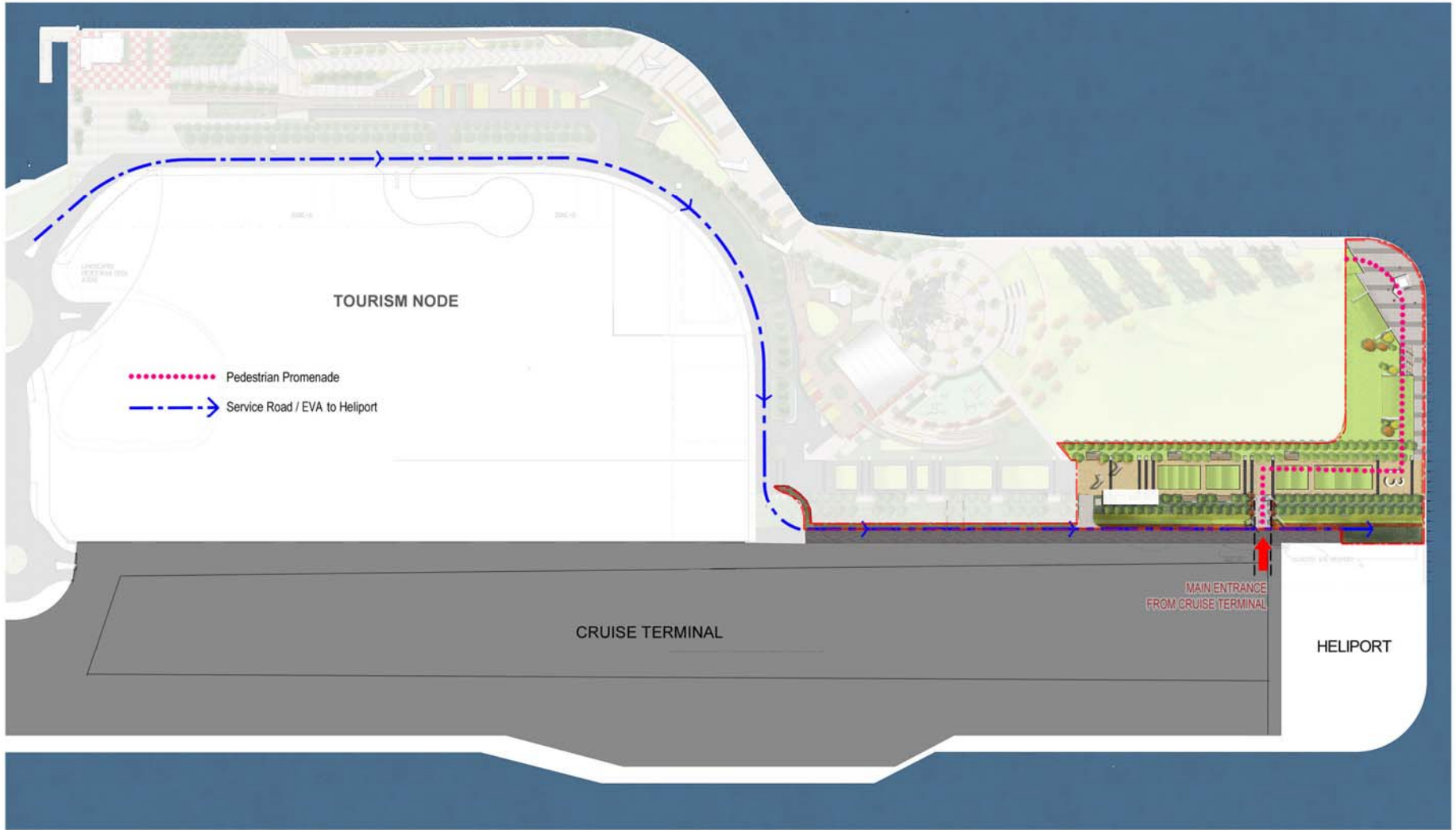


Existing Conditions



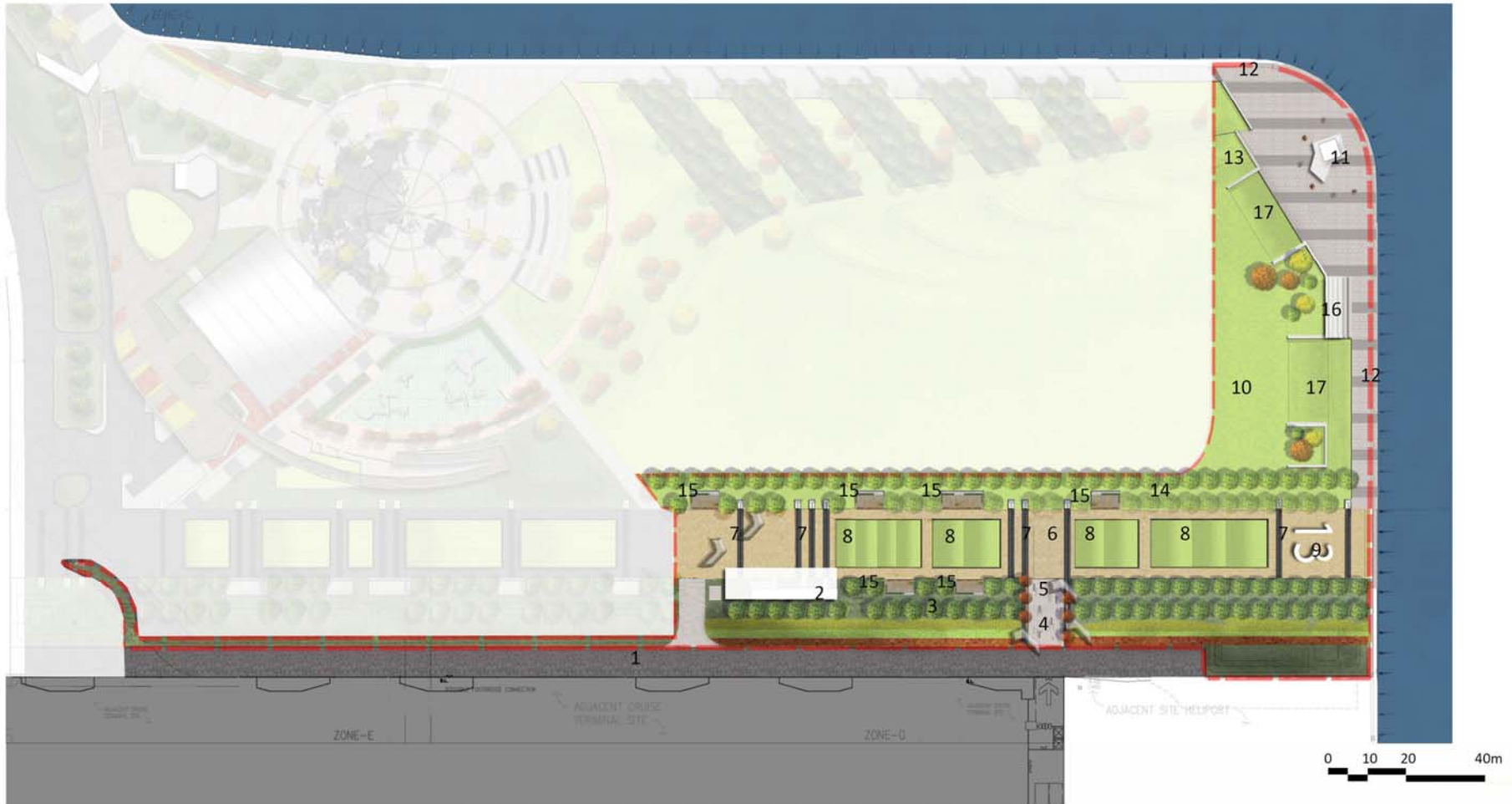
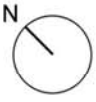
Adjacent Developments and Structures





Legend

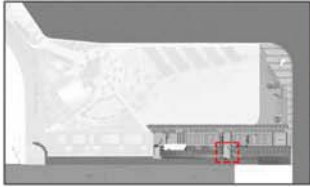
- | | | |
|------------------------------|-------------------------|--------------------|
| 1 EVA | 7 time line column | 13 plaza |
| 2 toilet block | 8 lawn planter | 14 grand avenue |
| 3 green buffer mounding | 9 "13" seating | 15 terrace seating |
| 4 path to Cruise Terminal | 10 lawn | 16 pavilion |
| 5 aircraft shades structures | 11 weather station | 17. grass ramp |
| 6 existing runway remnant | 12 waterfront promenade | |



All Materials for illustration purpose only, subject to change

Master Landscape Plan

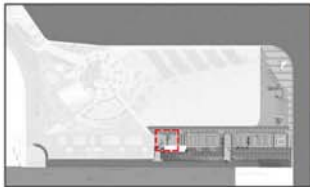




KEY PLAN



ARBOR CLUSTER AT MAIN ENTRANCE FROM CRUISE TERMINAL BUILDING



KEY PLAN



ARBOR CLUSTER AT WESTERN END OF RUNWAY REMNANT



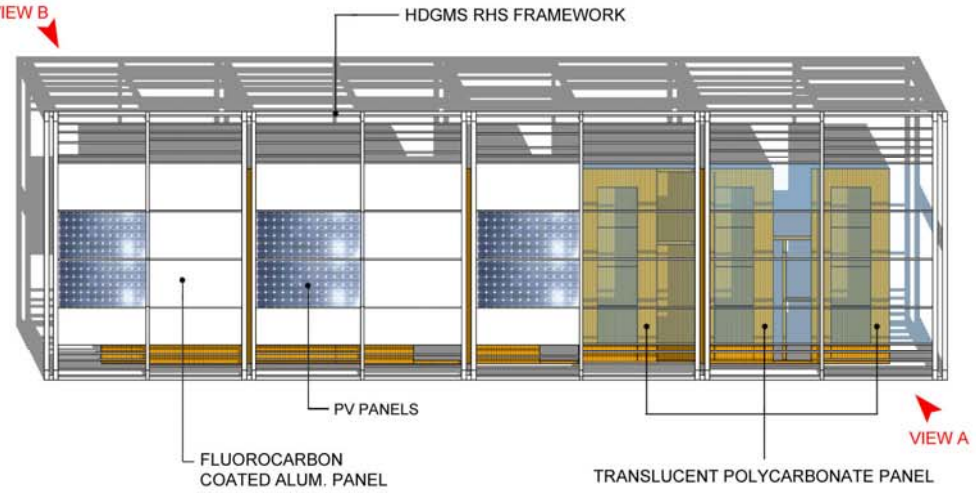
All Materials for illustration purpose only, subject to change

Runway Remnant

VIEW A



VIEW B



VIEW B



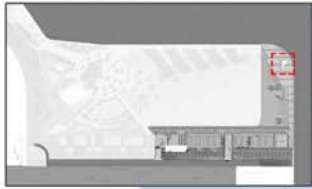
ROOF PLAN OF ANCILLARY BLOCK



KEY PLAN

All Materials for illustration purpose only, subject to change

Ancillary Block

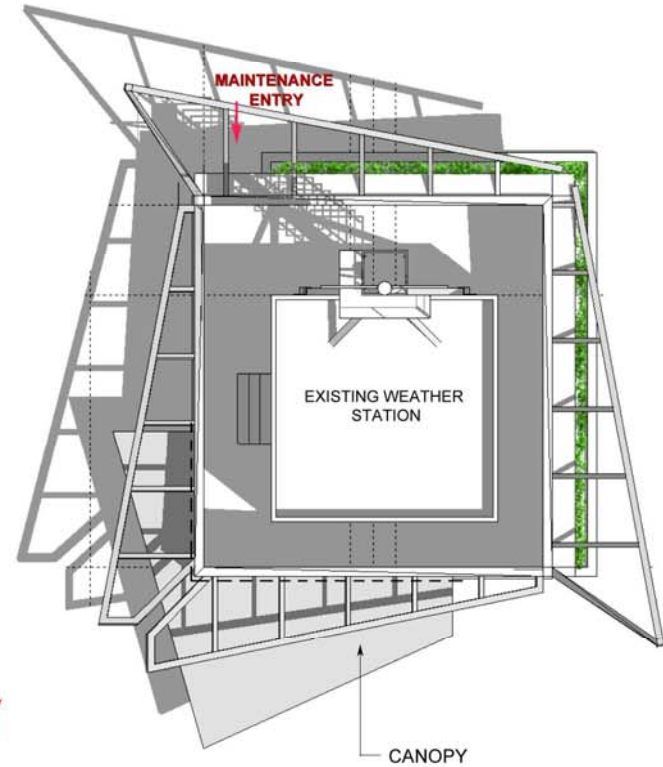
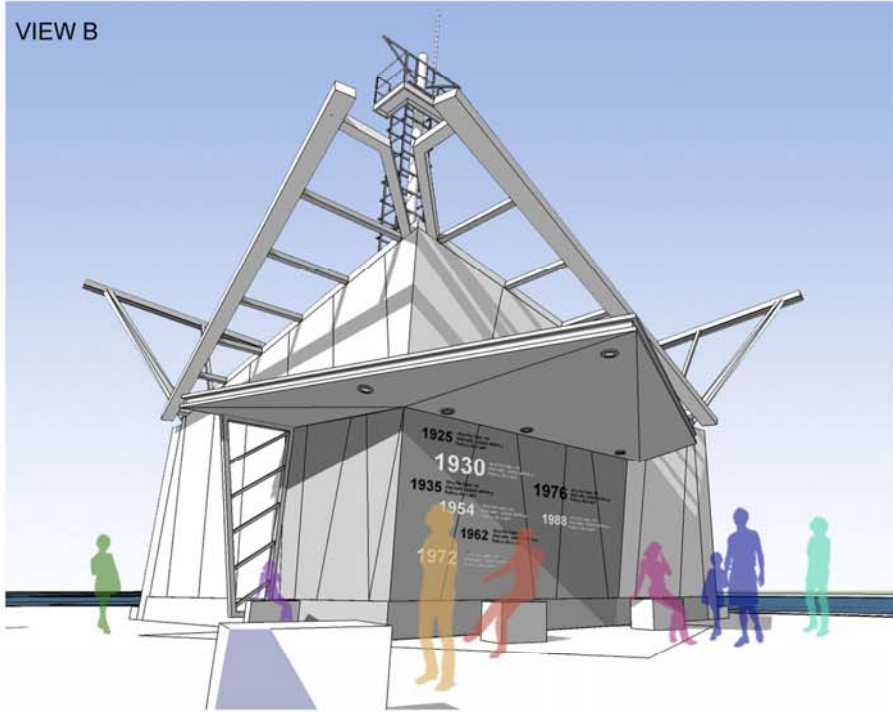


KEY PLAN



VIEW A

VIEW B

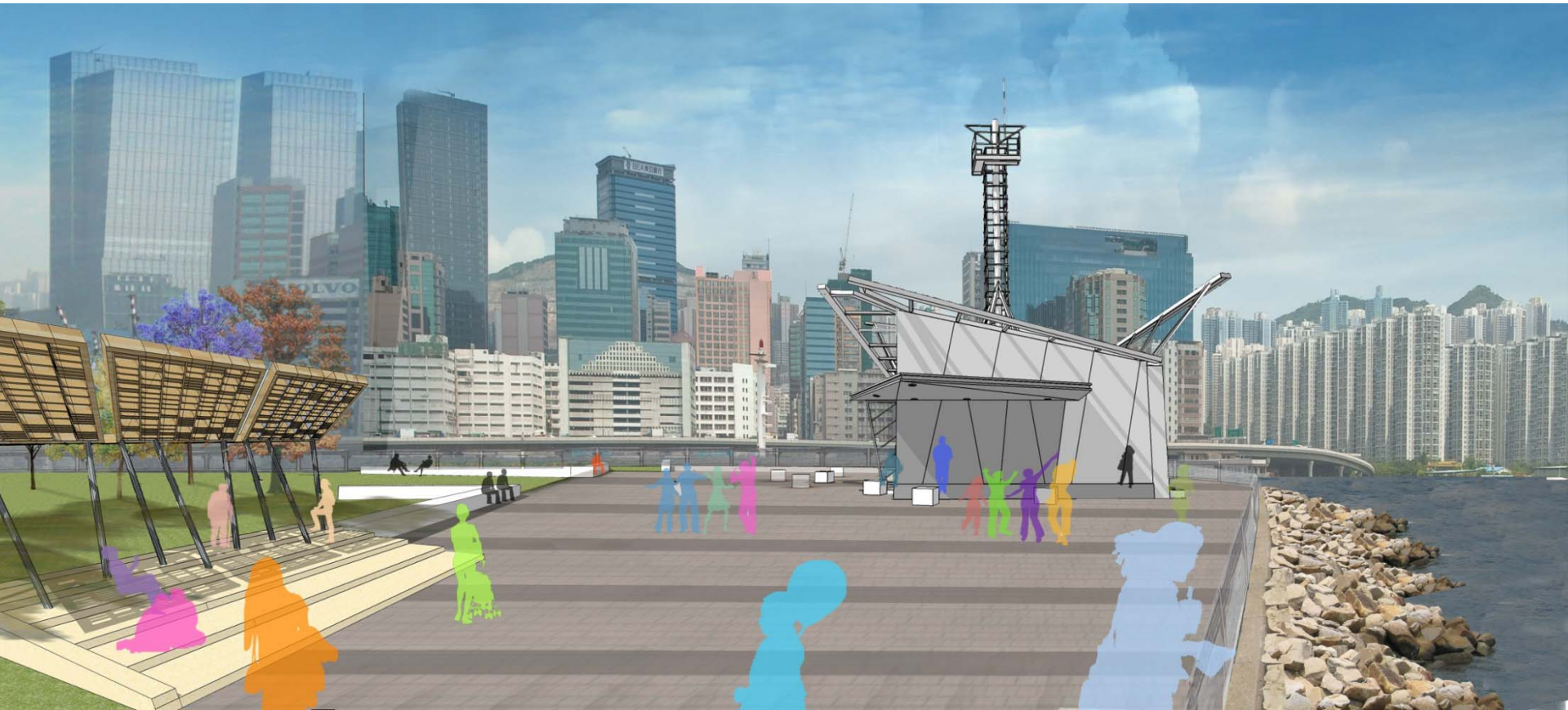
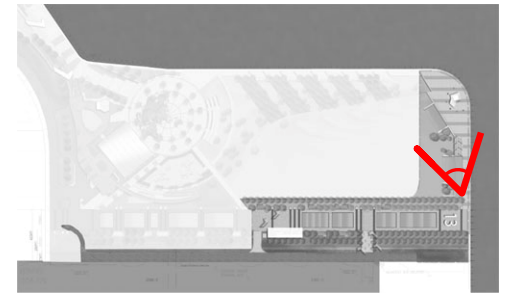


VIEW B

VIEW A

ROOF PLAN OF WEATHER STATION





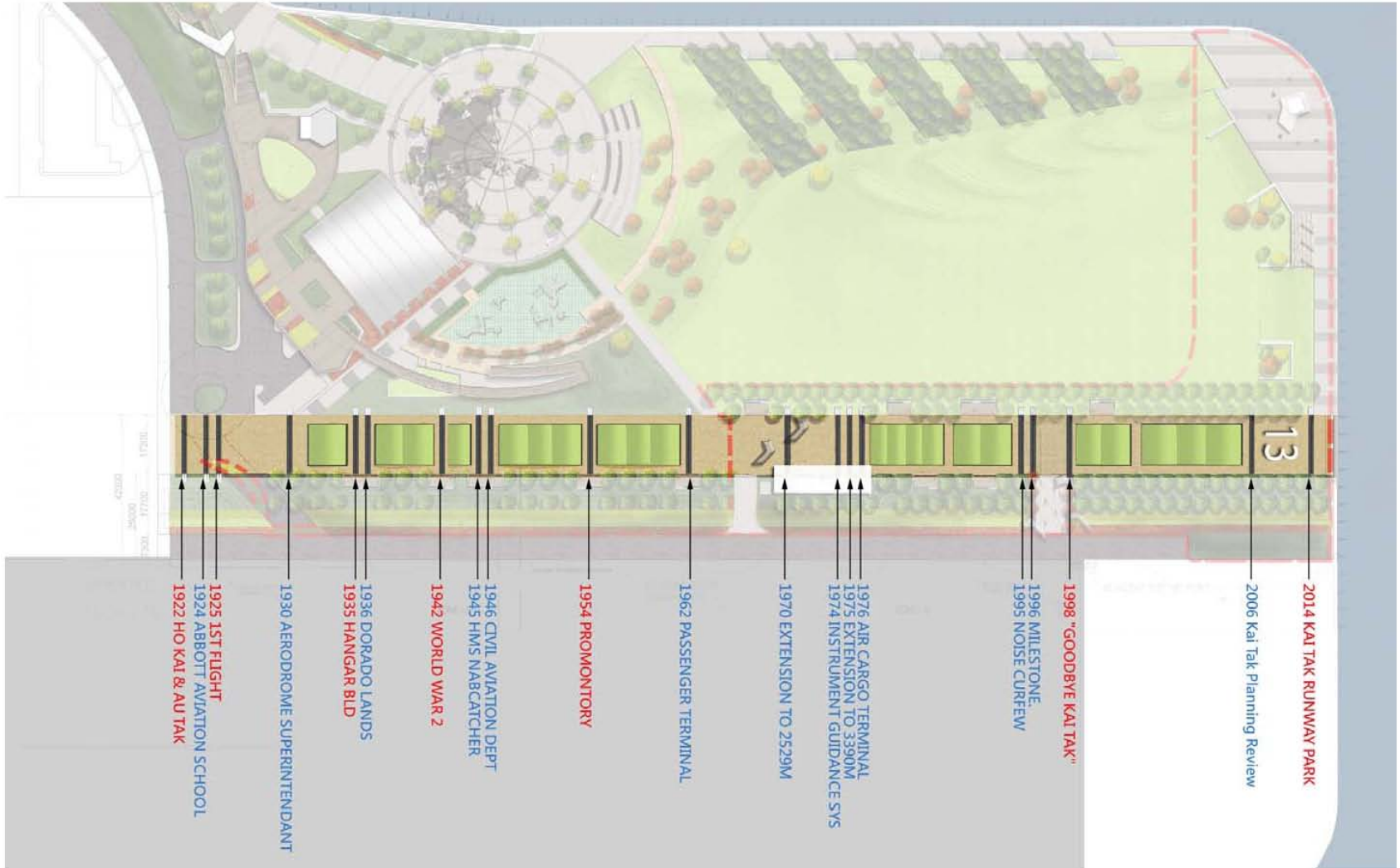
All Materials for illustration purpose only, subject to change

Waterfront Perspective

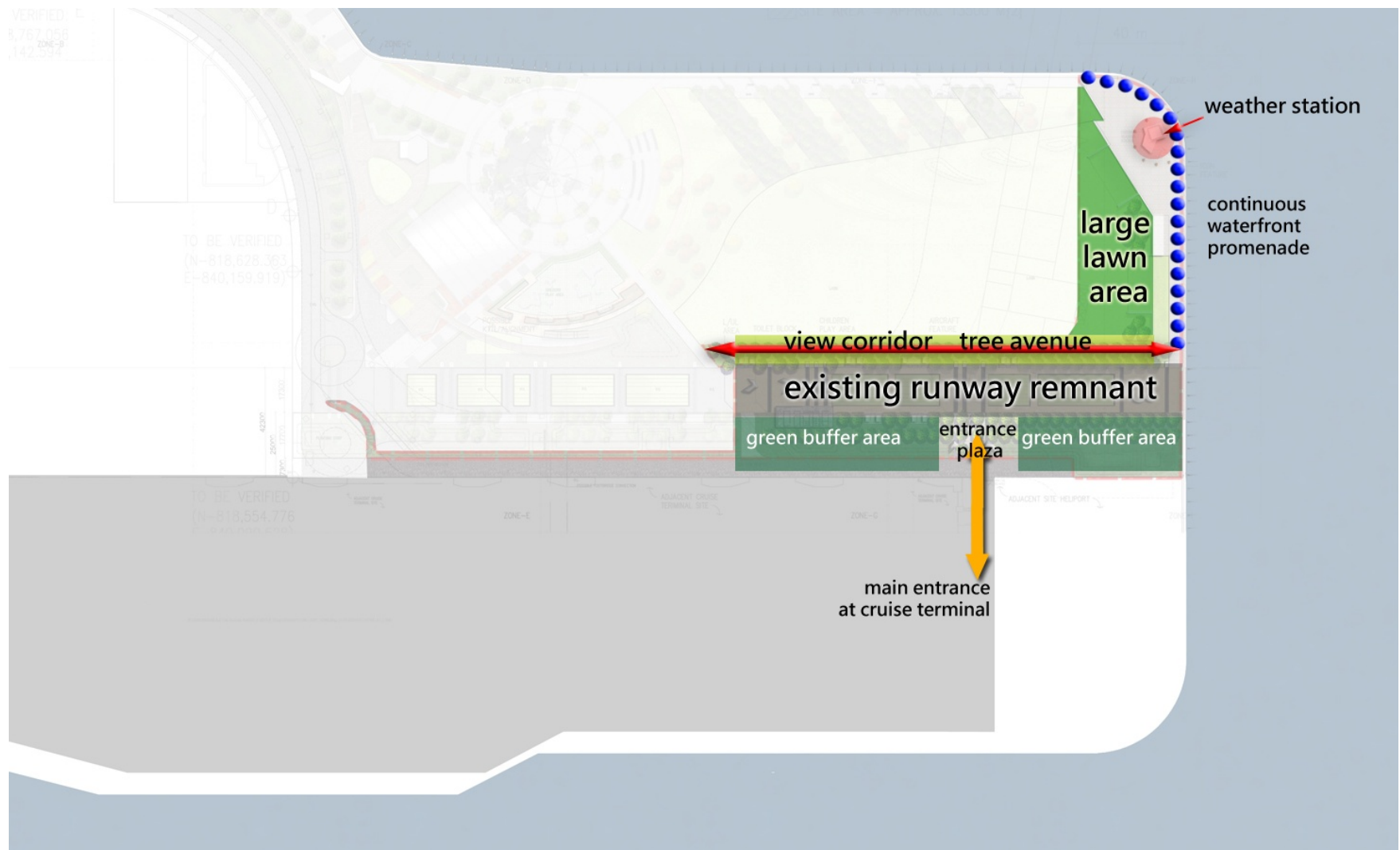
A 3D architectural rendering of a landscape design plan. The plan shows a large, irregularly shaped site with a red dashed line indicating the boundary. The site is divided into several zones: a large open area in the center, a paved area with a small structure in the foreground, and a green area with trees and a path. A large, rectangular building is shown in the background, partially overlapping the site boundary. The text "Landscape Design" is overlaid in the center of the plan.

Landscape Design

Concept of Time & Place on the Runway

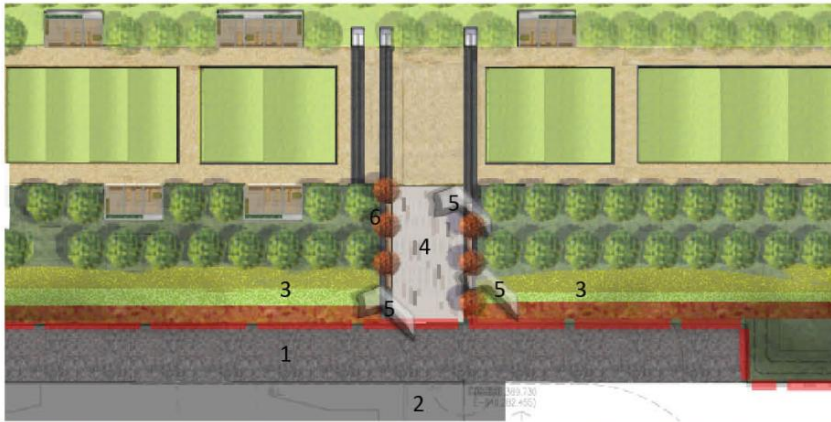


Landscape Framework

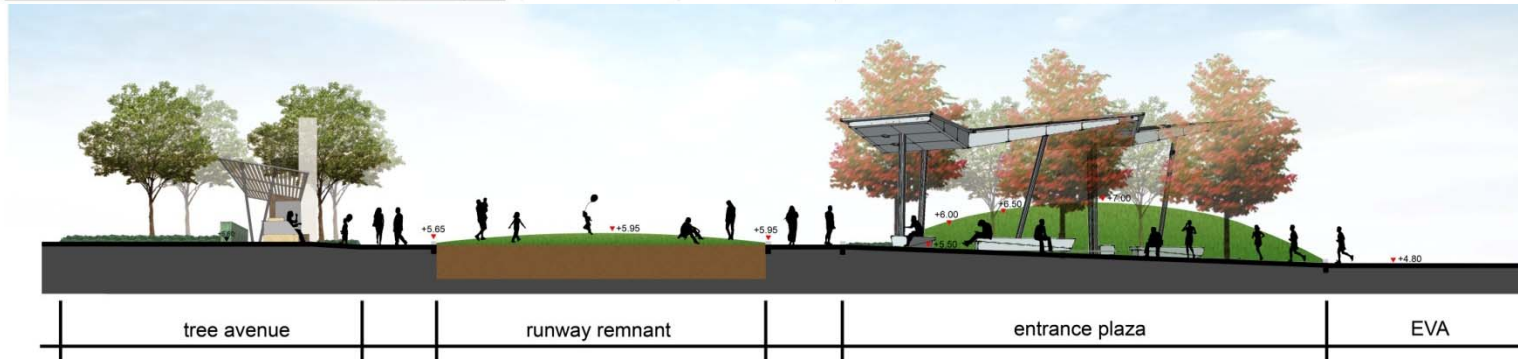
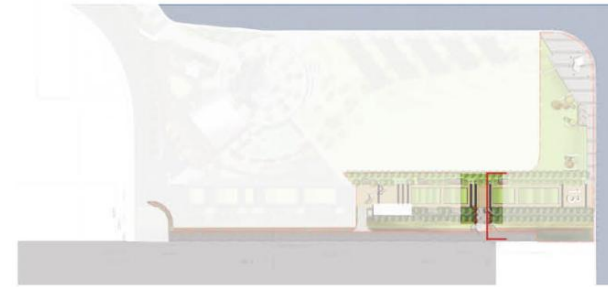


All Materials for illustration purpose only, subject to change

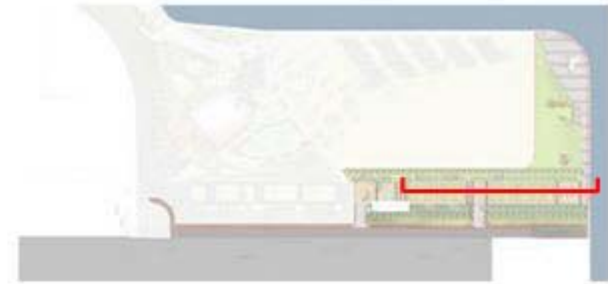
Entrance Plaza



- Legend
- 1 EVA
 - 2 cruise terminal
 - 3 green buffer mounding
 - 4 feature paving
 - 5 aircraft shades structures
 - 6 feature trees



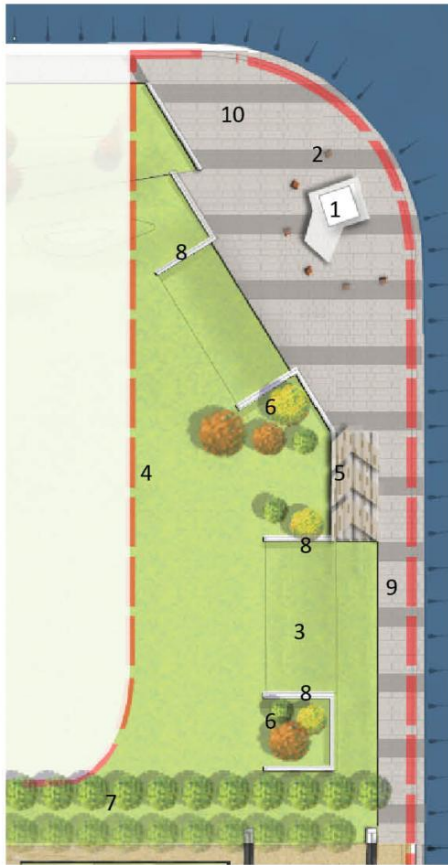
Runway Remnant & Tree Avenue



- Legend
- 1 runway remnant
 - 2 time line paving
 - 3 time line column
 - 4 aircraft shades structures
 - 5 undulating lawn planter
 - 6 "departure lounge" seating area
 - 7 toilet block
 - 8 tree avenue
 - 9 "13" bench



Open Lawn & Plaza



- Legend
- 1 Weather Station
 - 2 feature benches
 - 3 grass ramp
 - 4 open lawn
 - 5 trellis
 - 6 amenity trees
 - 7 tree avenue
 - 8 wing bench
 - 9 waterfront promenade

All Materials for illustration purpose only, subject to change

