



Harbourfront Commission

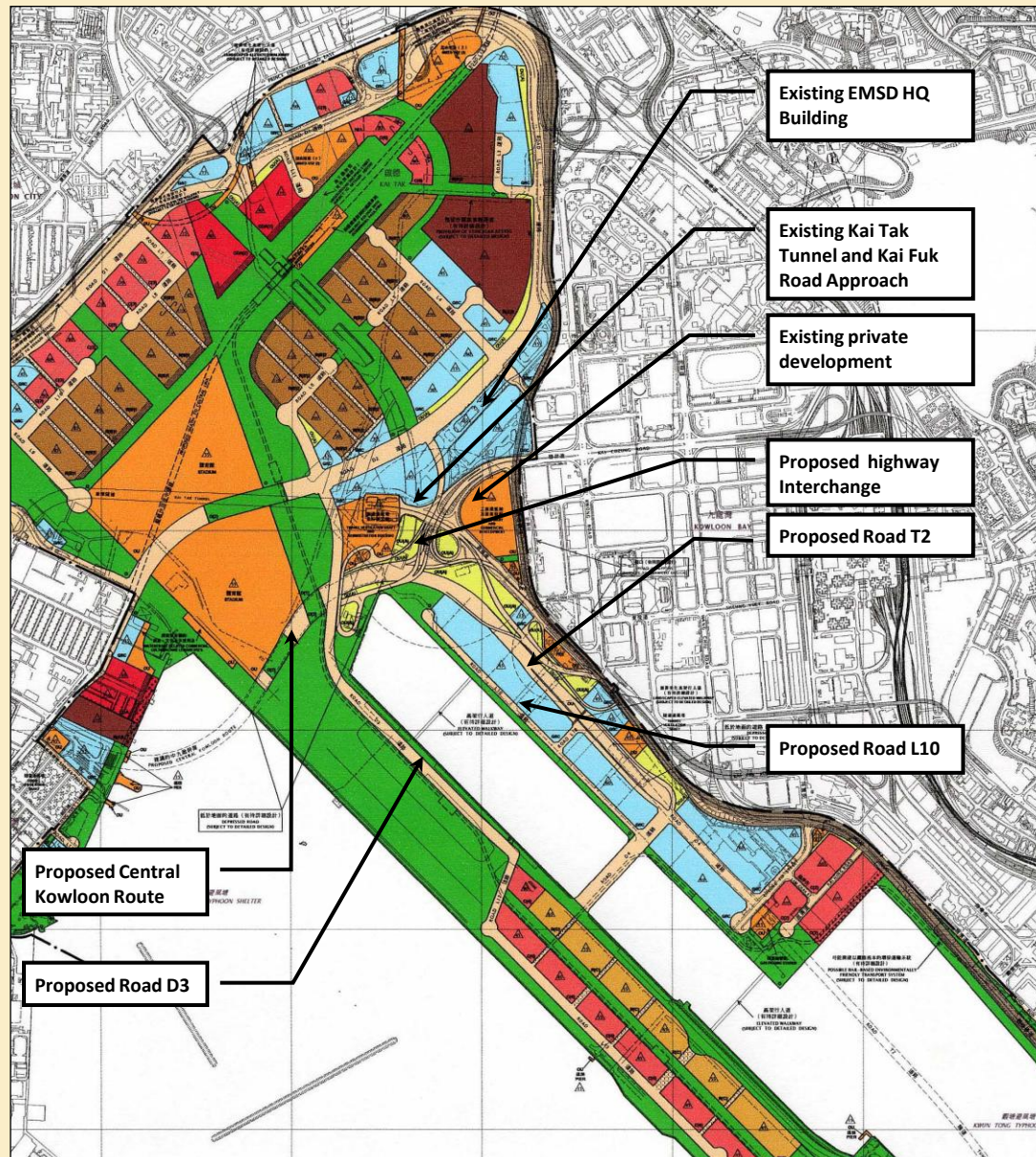
Task Force on Kai Tak Harbourfront Development

Enhancement of Accessibility to Kai Tak Waterfront

7 September 2010

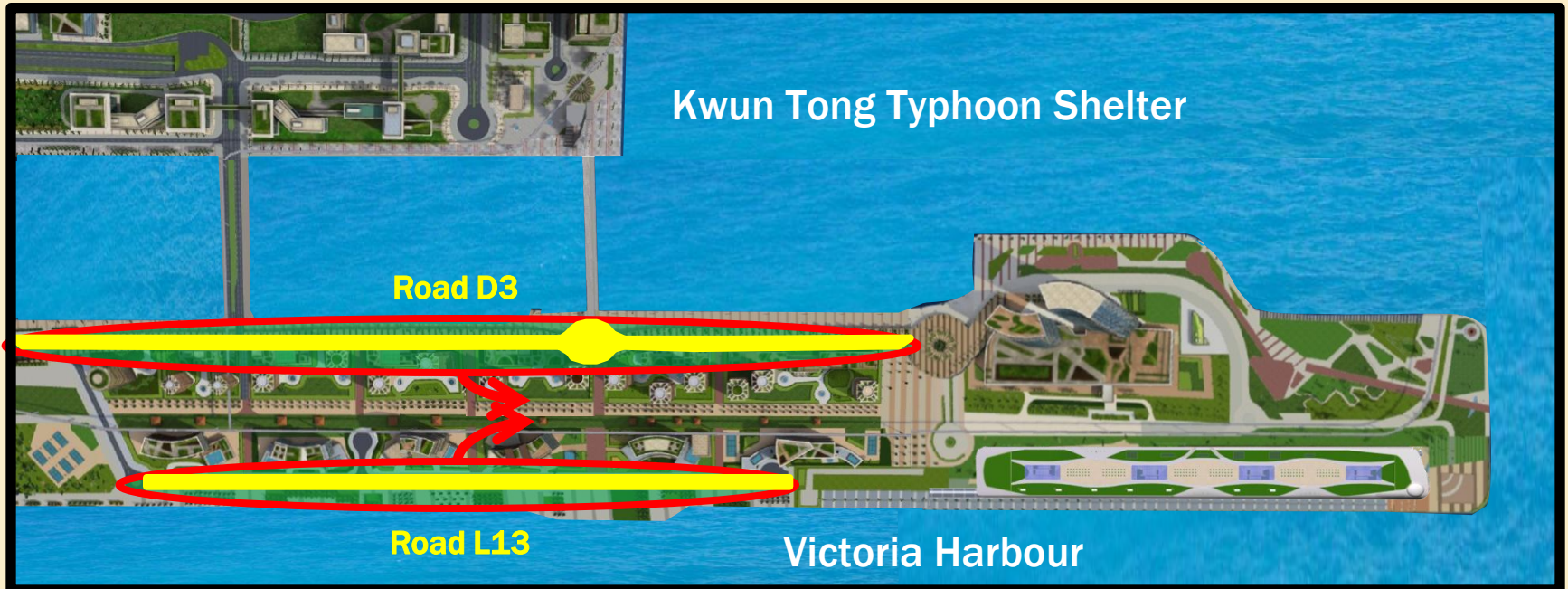


Constraints on Accessibility / Connectivity



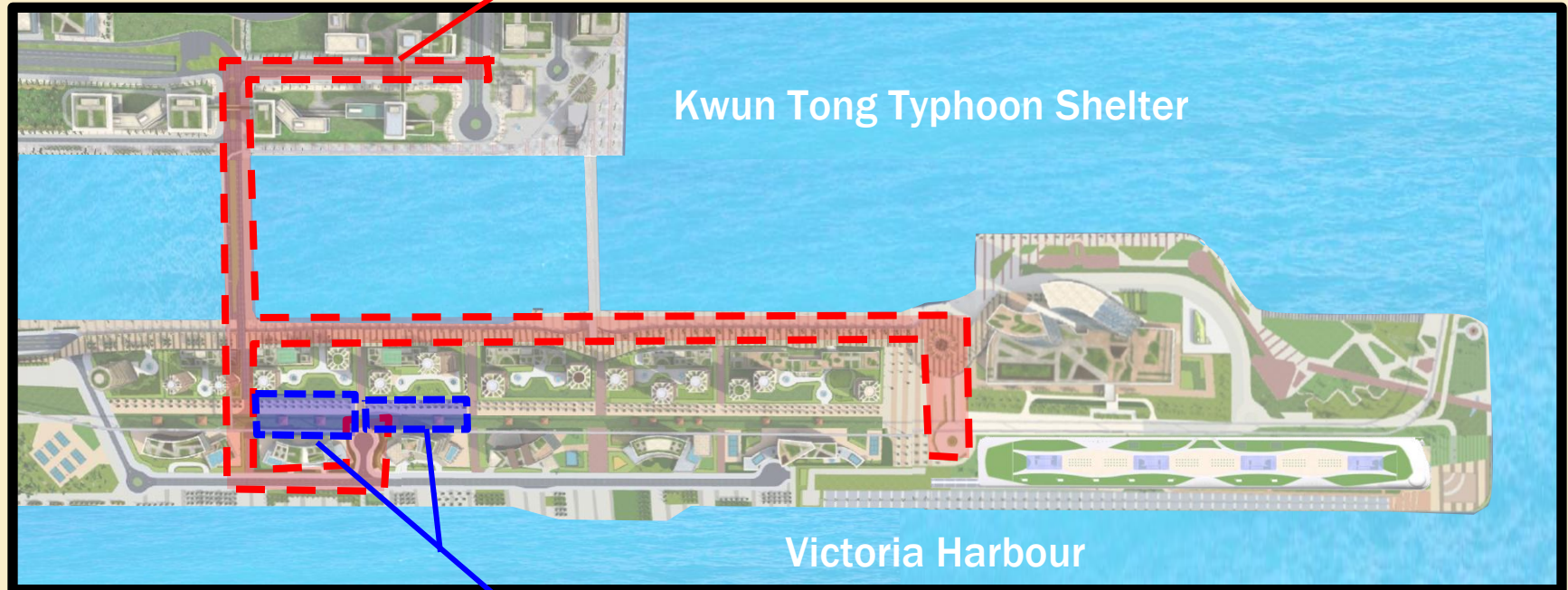
Waterfront at Runway Precinct

Setting back runway roads from waterfront



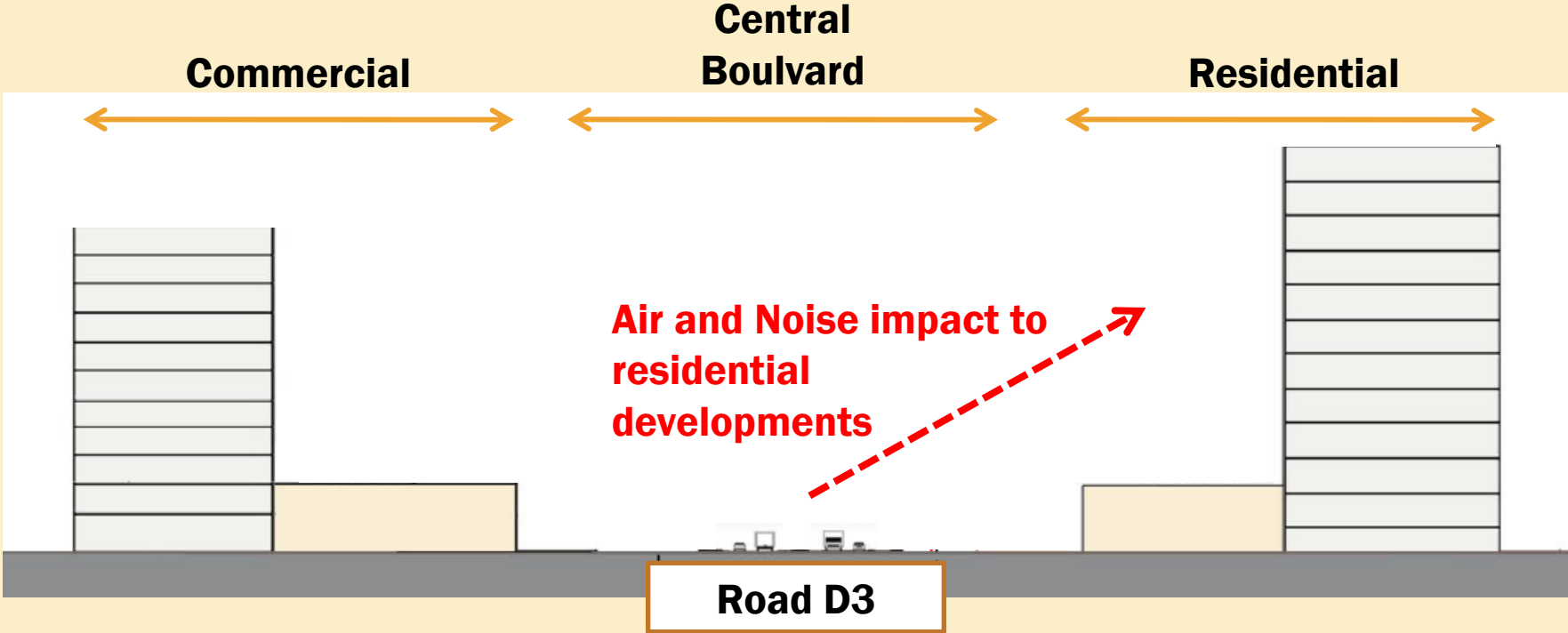
Key Issues Arising (1)

**Vehicular connections for Cruise Terminal
already started construction**

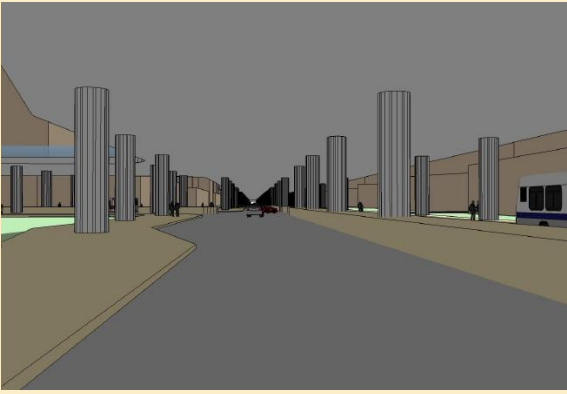
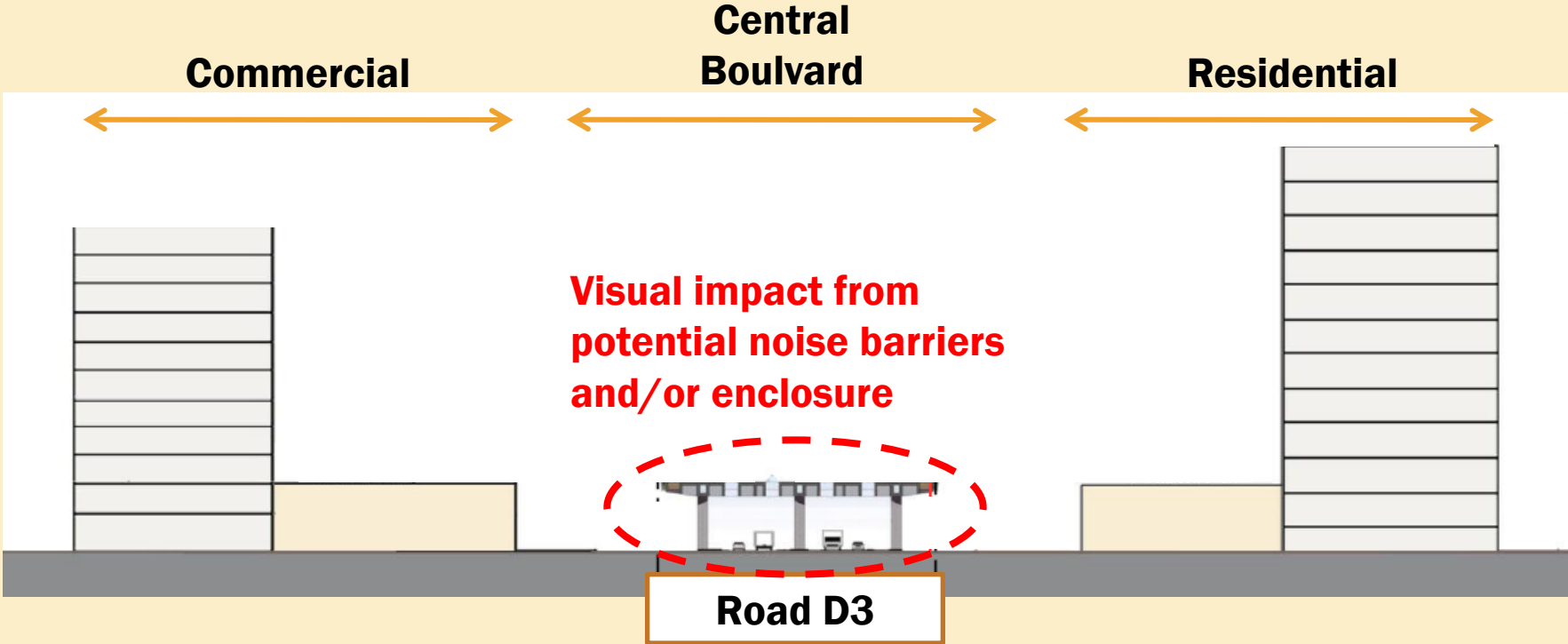


**Underground infrastructure for the District
Cooling System**

Key Issues Arising (2)

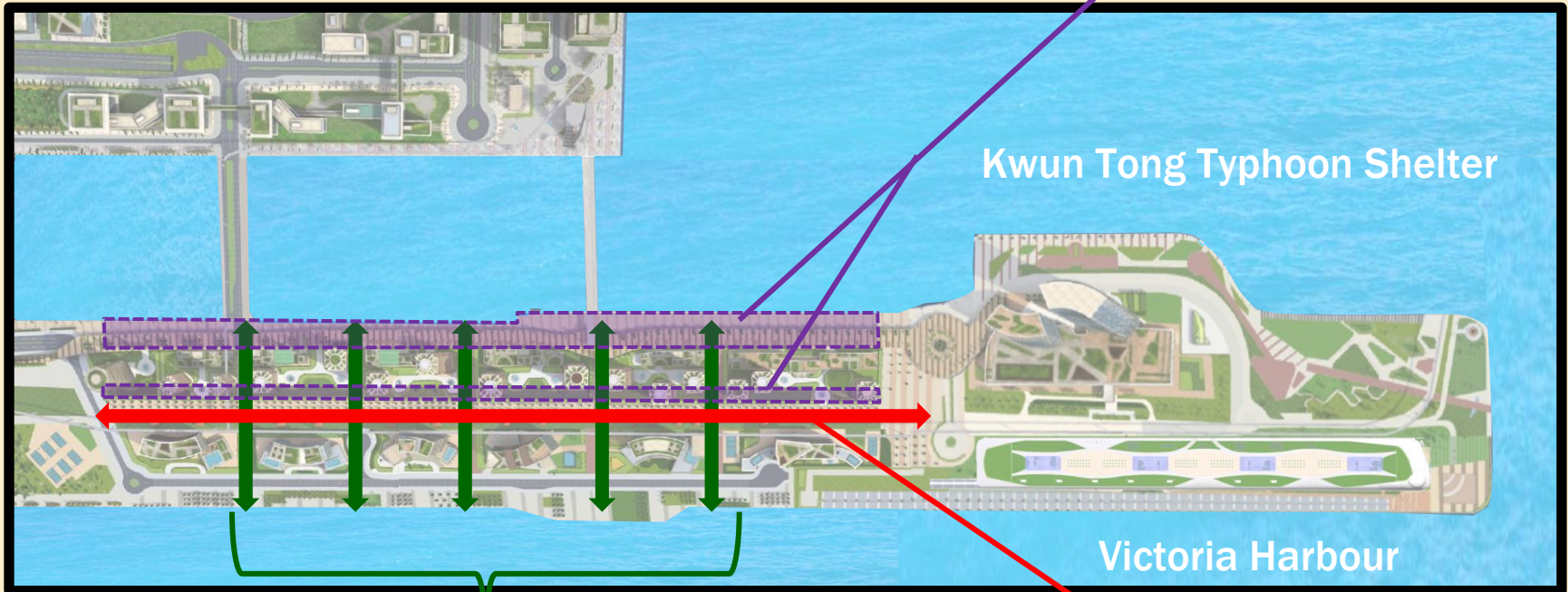


Key Issues Arising (3)



Key Issues Arising (4)

Balancing building set-back and waterfront promenade with residential site





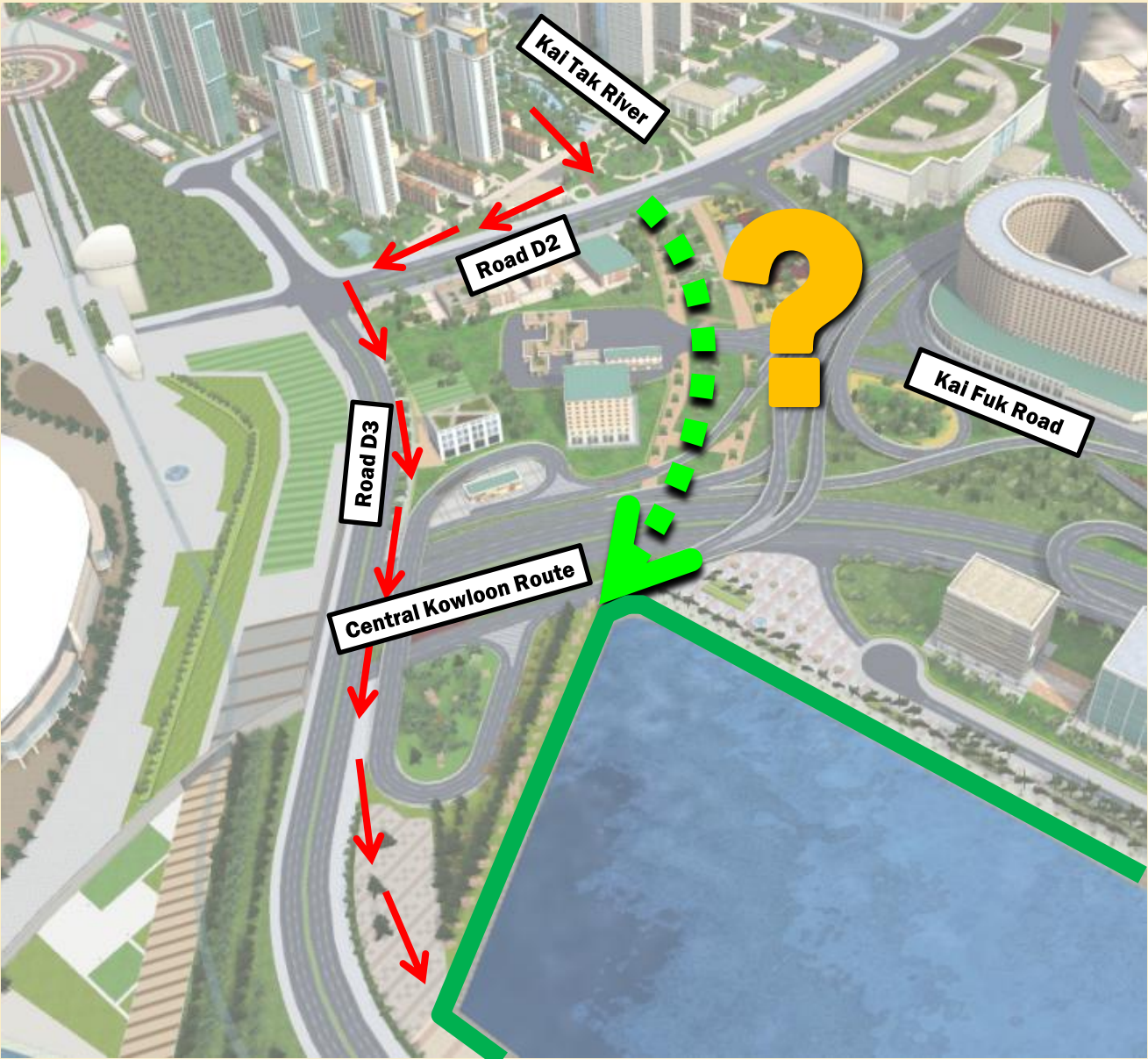
Connectivity between developments and waterfront promenades across the road

Inviting and comfortable environment along central boulevard

Kai Tak River to Waterfront

Legend

-  Pedestrian Route
-  Waterfront Promenade



Connectivity at South Apron



**5m wide deck over
channel to connect
promenade**

Waterfront at South Apron

Shifting Roads Away from Apron Waterfront

