

Task Force on Kai Tak Harbourfront Development

For discussion
on 19 December 2014

TFKT/12/2014

Signature Project Scheme in Kwun Tong: Construction of Music Fountains at Kwun Tong Promenade

PURPOSE

This paper aims to brief Members on the project “Construction of Music Fountains at Kwun Tong Promenade” to be pursued by the Kwun Tong District Council (“KTDC”) under the Signature Project Scheme (“SPS”), and seeks Members’ views on its design.

BACKGROUND

2. The Chief Executive announced the SPS in his 2013 Policy Address to enhance district administration. Under the Scheme, a one-off allocation of \$100 million is earmarked for each District Council (“DC”) to carry out one to two signature projects that will bring visible and sustainable impact on the district, address district needs and highlight characteristics of the district. All SPS projects are to be proposed, discussed and agreed by the DC before implementation.

DELIBERATION BY THE KTDC

3. At the meeting held on 1 March 2013, the KTDC was briefed on the SPS framework and the Chairman requested members to collect public views on the SPS. A total of 16 possible options for the SPS were subsequently proposed by the KTDC members. To study these options, a Working Group on SPS under the KTDC was established on 7 May 2013. Initial views from relevant government departments on the feasibility of these possible options were sought.

Task Force on Kai Tak Harbourfront Development

TFKT/12/2014

The Working Group shortlisted six possible options on 26 June 2013 based on the feedback. After the site visit and consultation with the six area committees, KTDC endorsed the recommendations of the Working Group to pursue two projects, namely the “Construction of Music Fountains at Kwun Tong Promenade” and “Construction of Lift Tower at Shung Yan Street”, at its meeting held on 5 November 2013 to facilitate economic development on one hand and improve people’s livelihood on the other.

ASPIRATION OF THE KTDC

4. The KTDC is eager to develop the Kwun Tong Promenade as a landmark of Kowloon East. A political party in Kwun Tong conducted a questionnaire survey in August 2013. Over 80% of the respondents supported enhancing tourism development in Kwun Tong for the benefit of local economic growth. To this end, over 85% of the respondents supported the proposal of constructing music fountains at the Kwun Tong Promenade.

5. By constructing the music fountains, with integrated dynamic lighting, music features and special effects, a high profile tourism and entertainment attraction to showcase the vibrancy and glamorous night vista of the Victoria Harbour can be provided in the Kowloon East. From a harbourfront enhancement perspective, not only would the proposed project create a pleasant waterfront environment, it would also be conducive to enhancing the attractiveness of the Kai Tak Cruise Terminal, which was opened in June 2013. From a tourism and economic perspective, the project will generate a constant flow of people, and help revitalize the local area and provide business and job opportunities to the neighborhood, thereby contributing to the “Energizing Kowloon East” initiative of transforming Kowloon East into a lively business district.

Task Force on Kai Tak Harbourfront Development

TFKT/12/2014

THE PROJECT PROPOSAL

6. The proposed site is located at the Kwun Tong Promenade and the site area is of approximately 3,300 square metres. A site layout plan is attached at **Annex A**.

7. This SPS project comprises works components and non-works components, as follows-

(a) Works: construction of the dynamic lighting with some water features, leading to a full scale music fountain at the eastern end of Kwun Tong Promenade (Stage 2) by utilizing and integrating laser, animated lighting and sound effects; and provision of ancillary facilities (e.g. water and electricity supply);

(b) Non-works: community involvement and publicity programme with a view to transforming the Kwun Tong Promenade into a popular and vibrant tourism attraction. Subject to the deliberation of the KTDC, activities such as commencement and completion ceremonies and other anchor events will be organized to turn the promenade and the harbourfront into a popular tourist spot. A range of promotional materials, including leaflets, banners, display boards and souvenirs have also been prepared to widely publicise the signature projects.

8. The Architectural Services Department (“ArchSD”) is the works agent for the project, while the Leisure and Cultural Services Department (“LCSD”) would be the management and maintenance department upon completion.

Task Force on Kai Tak Harbourfront Development

TFKT/12/2014

THE DESIGN

9. In preparing the design for the project, ArchSD has taken into account the views and suggestions made by KTDC. The design concept emphasizes “Imagination” and “Luminosity”, with adoption of reflective glass panels to create illusion at different times of the day. In day time, the stunning sea view will be reflected to project imagination, while the dynamic lighting will be reflected at night time to project the vibrancy of the Victoria Harbour. Proposal of the preliminary design is attached at **Annex B**.

10. The signature project will comprise fountains with different themes along the Kwun Tong Promenade. The interactive fountains with jumping jets at the plaza and the dry fountain play area are designed to allow easy access and feature nonslip surfaces. Children and people can go inside and enjoy the cooling in the summer. It is a refreshing addition to the entertainment options at the Kwun Tong Promenade. The performance music fountain is the story of water, light and music, which will be thoughtfully interwoven to amuse the tourists. The water jets at the fountain can operate at a maximum height of eight metres, with the animated lighting, integrating laser and photographic projectors, these mediums will be used to create entertainment on a large scale. The attraction will light up the waterfront and the flyover of the Kwun Tong Bypass.

WAY FORWARD

11. The KTDC endorsed the project content and design at its meeting held on 4 November 2014. ArchSD is preparing the detailed drawings and the works estimates. Our working target is to submit funding application to the Legislative Council in the current legislative session and commence construction in 2015/16.

Task Force on Kai Tak Harbourfront Development

TFKT/12/2014

VIEWS SOUGHT

12. Members' views on the design are welcome.

**Kwun Tong District Office
Home Affairs Department
December 2014**

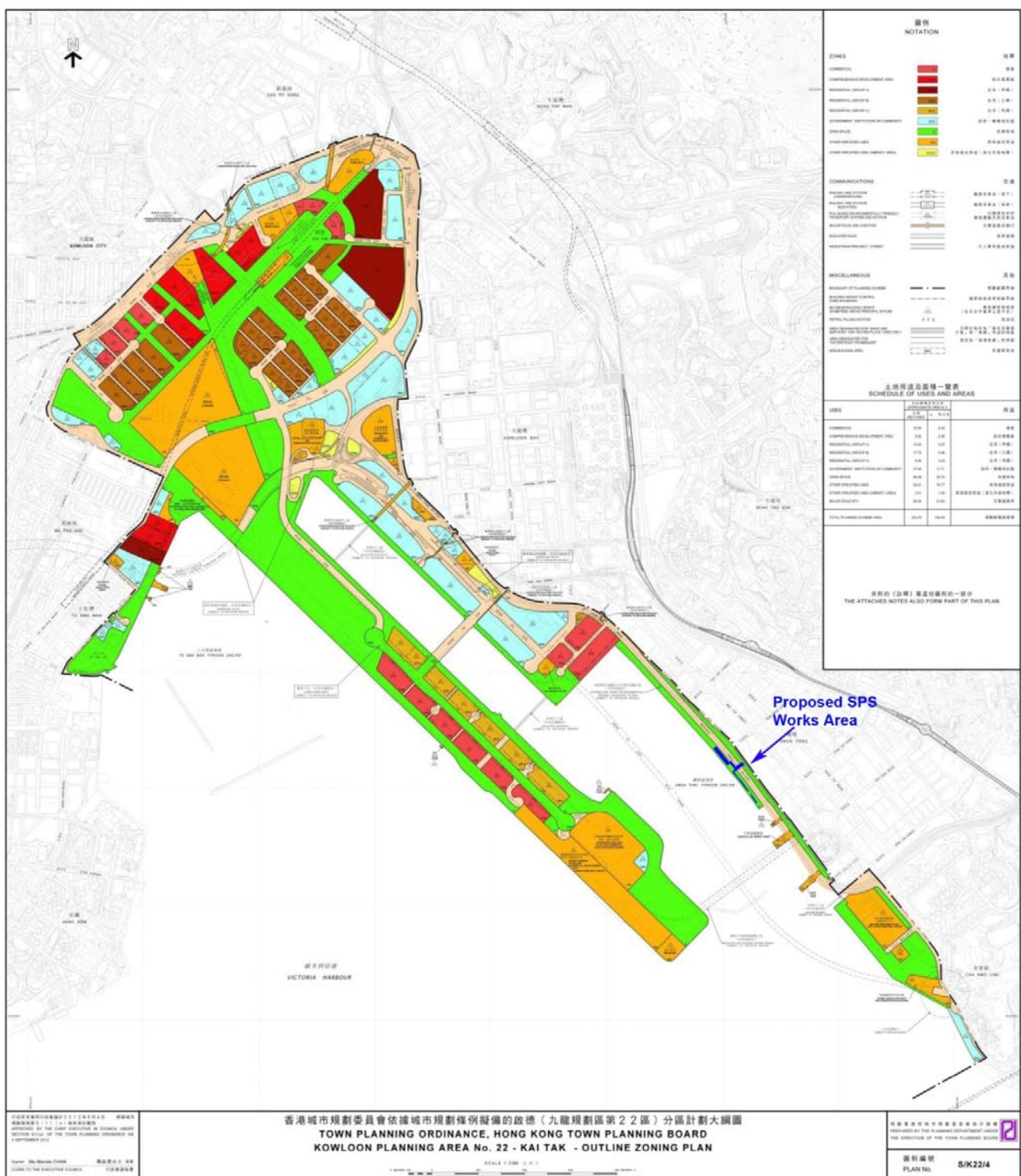
ATTACHMENTS

- Annex A – Project Scope Layout Plan in KTD
- Annex B – Music Fountains at Kwun Tong Promenade

Task Force on Kai Tak Harbourfront Development

Annex A

Project Scope Layout Plan in KTD

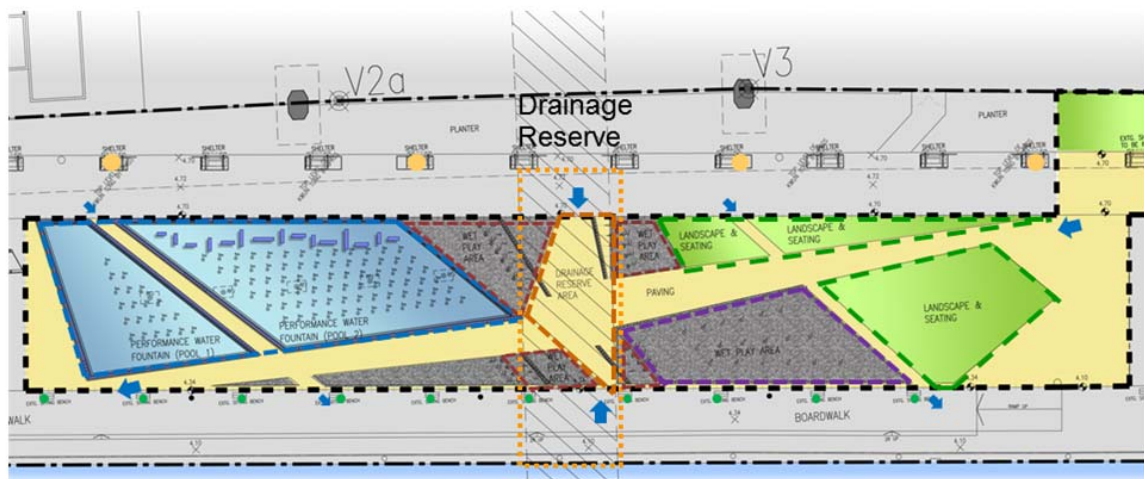
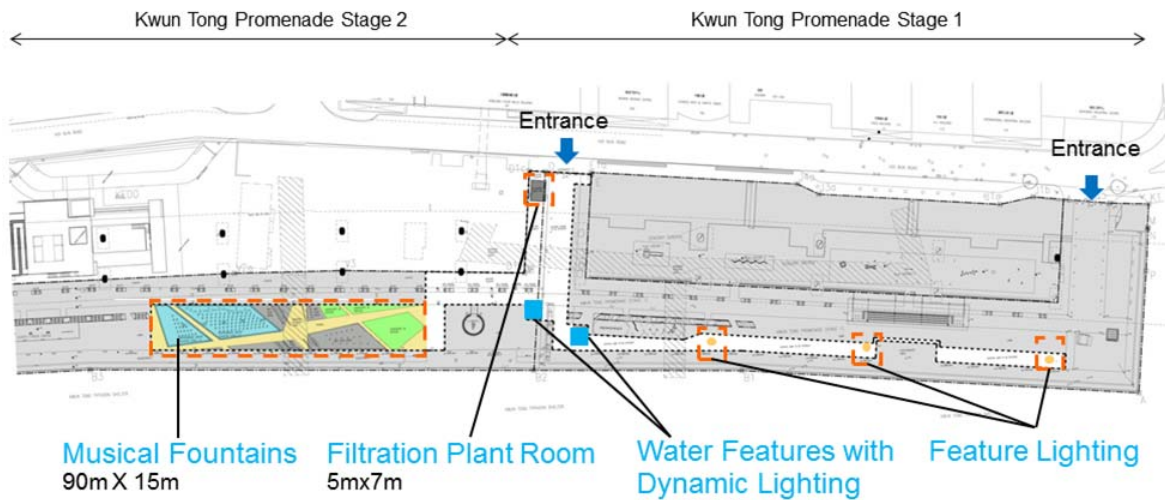


Task Force on Kai Tak Harbourfront Development

Annex B

Music Fountains at Kwun Tong Promenade

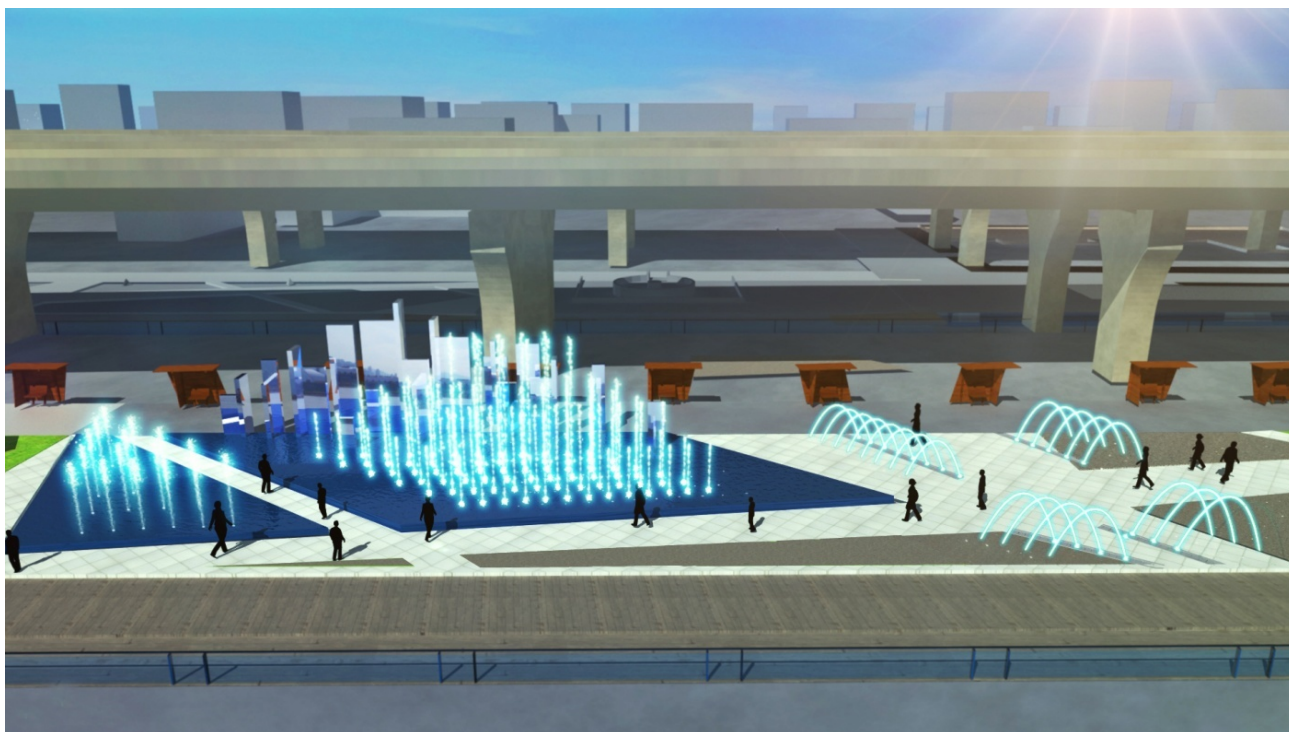
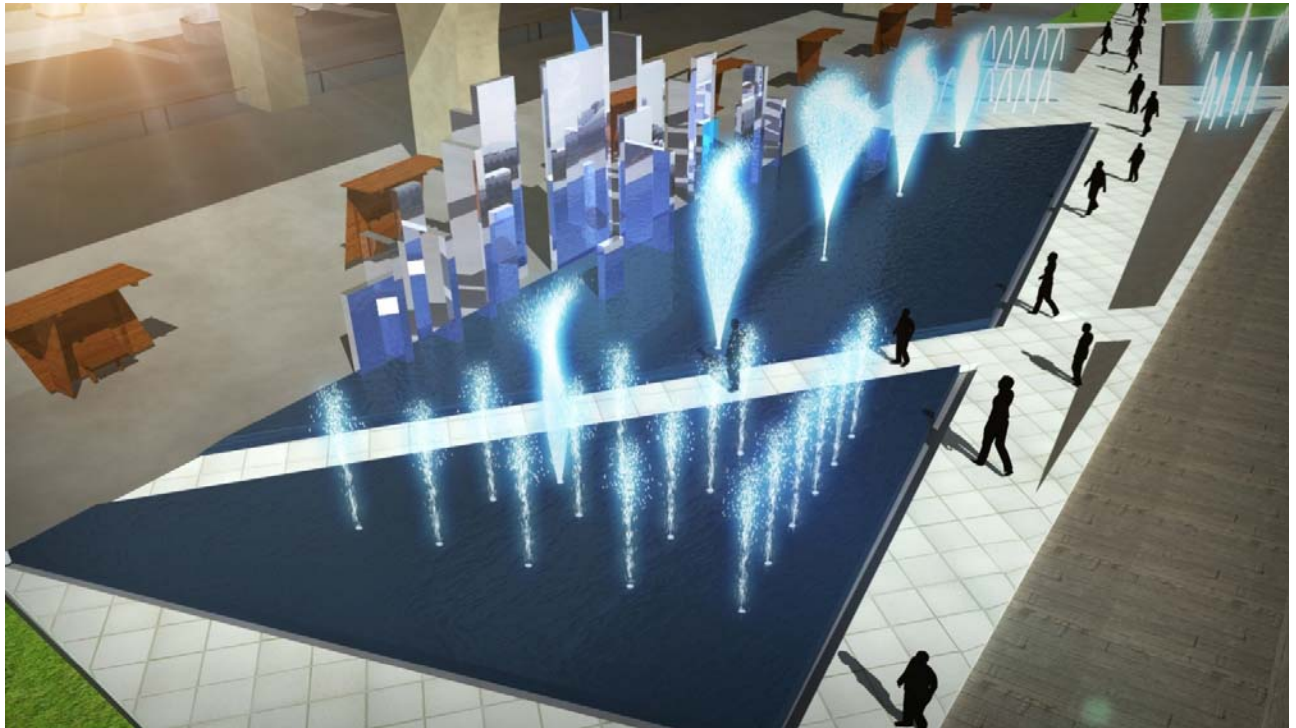
Site Plan and Music Fountains Layout Plan



Plaza		Dry Fountain	
Circulation		Landscape	
Wet Fountain		Colour Projector	
Jumping Jet		Speaker	

Task Force on Kai Tak Harbourfront Development

Music Fountains Perspective Views (Day View)



Task Force on Kai Tak Harbourfront Development

Music Fountains Perspective Views (Night View)

