

Task Force on Kai Tak Harbourfront Development

For information
on 8 October 2013

TFKT/11/2013

Kai Tak Development Progress Report as of September 2013

PURPOSE

This paper provides an overview of the latest progress of Kai Tak Development (KTD).

BACKGROUND

2. KTD is a huge and highly complex development project spanning a total planning area of about 323 hectares and covering the ex-airport site together with the adjoining hinterland districts of Kowloon City, Wong Tai Sin and Kwun Tong. It is our vision to develop the KTD into “a distinguished, vibrant, attractive and people-oriented community by the Victoria Harbour”. Kowloon East, comprising KTD, Kowloon Bay business area and Kwun Tong business area, will be transformed into a new Central Business District to sustain Hong Kong’s economic growth.

CURRENT SITUATION

3. The updated programme chart is at **Annex A**. The following are highlights of the latest progress -

Projects Planned for Completion in 2013

4. Construction of key KTD projects targeted for completion in 2013 is progressing on schedule. These projects include the Kai Tak Cruise Terminal (KTCT) building and the first berth, installation of a new radar on top of the KTCT building, public rental housing development in the North Apron area (i.e. Kai Ching

Task Force on Kai Tak Harbourfront Development

TFKT/11/2013

Estate (啓晴邨) and Tak Long Estate (德朗邨)), early phases of the District Cooling System (DCS), a fire station cum ambulance depot at the South Apron area, Runway Park Phase 1 and the associated supporting infrastructure. A location plan showing the above projects is at **Annex B**.

Infrastructure Works at North Apron Area

5. Population intake of Kai Ching Estate (啓晴邨) commenced in July 2013. Tak Long Estate (德朗邨) will be completed in two phases before Q1 of 2014, to be followed by population intakes. New roads and associated infrastructure works to tie in with the population intakes of the public rental housing development have been completed, which are under Stage 1 infrastructure works. The Stage 2 infrastructure works serving seven housing sites of the Grid Neighbourhood situated to the east of Kai Tak River are progressing on schedule and targeted for completion in Q1 2014.

6. The construction of Stage 3A and Stage 4 infrastructure works have just commenced, which will be completed in 2016 and 2017 respectively. The works mainly comprise construction of new roads, modification and widening of existing roads, a vehicular underpass across Prince Edward Road East, a new pedestrian subway, two sewage pumping stations and the associated infrastructure at the North Apron area.

DCS

7. DCS Phase I pipe laying works have been substantially completed. Regarding the Phase II works, construction of a temporary chiller plant room was completed in February 2013 to provide chilled water to the KTCT building. The pipe-laying works at the Former Runway for KTCT were completed, whilst the construction works of southern plant room and seawater pump room are in progress. The remaining phases of the DCS are being planned to be implemented to tie-in with the development

Task Force on Kai Tak Harbourfront Development

TFKT/11/2013

programme of different areas in KTD.

Trade and Industry Tower (TI Tower)

8. Excavation works and construction of foundation and basement are in progress. The anticipated completion is in April 2015.

Fire station at Cheung Yip Street

9. The works were substantially completed in June 2013. The fire station has been in operation.

KTCT and Runway Park (Phase 1)

10. KTCT building and the first berth were commissioned in June 2013. The landscaped deck on top of the KTCT building will be completed and open to the public to tie in with the berthing of next cruise vessel scheduled for October 2013. The second berth will be completed in 2014 to receive medium-size cruise vessels. Upon relocation of the submarine gas mains by Towngas and completion of the remaining dredging works by the Government, it will then accommodate the world's biggest kind of ships by 2015.

11. The construction of Runway Park (Phase 1) is in progress. A section of the park will be completed for use by the public in late 2013. The remaining part will be completed in Q1 2014.

Central Kowloon Route (CKR) and Trunk Road T2 (T2)

12. The design of CKR and T2 projects is on-going. The Director of Environmental Protection issued the Environmental Permits for the CKR and T2 projects in August and September 2013 respectively. The CKR project will be gazetted under the Roads (Works, Use and Compensation) Ordinance by end 2013.

Task Force on Kai Tak Harbourfront Development

TFKT/11/2013

13. Members are invited to note the Paper No. TFKT/13/2013 submitted to this meeting for more details about the T2 project.

Shatin-to-Central Link (SCL)

14. The construction of SCL is now in full swing at Kai Tak area for target completion in 2018. Piling works for the construction of the underground To Kwa Wan Station are in progress. Open cut excavation for the underground Kai Tak Station and associated tunnels is about to commence shortly.

15. The design of the above ground station facilities of SCL including station entrances will incorporate features of the district and mingled with the surrounding developments.

Centre of Excellence in Paediatrics (CEP)

16. The construction of CEP commenced in August 2013.

Environmentally Friendly Linkage System (EFLS)

17. The Stage 1 public consultation (PC) was completed in October 2012. Views on the preliminary findings of the EFLS Study were collected from this Task Force, the Panel on Development, the Kowloon City, Wong Tai Sin and Kwun Tong District Councils, professional institutes, transport operators, various focus/interest groups and two public engagement workshops. Further assessments have been undertaken to address major concerns received in Stage 1 PC. We are making preparation for the Stage 2 PC to be conducted later this year and we will separately consult members' views.

Kwun Tong Waterfront Promenade

18. Stage 2 of the project involves the footprint of the Kwun Tong Public Cargo Working Area, which was closed down in August 2011.

Task Force on Kai Tak Harbourfront Development

TFKT/11/2013

The construction commenced on 18 February 2013 for completion in end 2014.

Kai Tak Nullah

19. The contract for reconstruction and upgrading of Kai Tak Nullah¹ within KTD commenced on 31 January 2013 for completion by phases starting from 2016.

Lung Tsun Stone Bridge Remnants

20. The "Design Ideas Competition for Preservation Corridor for Lung Tsun Stone Bridge Remnants" was launched on 24 September 2013. Registration for the competition will close on 18 October 2013. Entries should be submitted from 14 to 18 November 2013. For details and the rules of the competition, please visit the competition website at www.ltsb-design.hk.

CONCLUSION

21. Members are invited to note the update on the planning and design of KTD. Advice and comments are welcome.

**Kai Tak Office, Kowloon Development Office
Civil Engineering and Development Department
October 2013**

¹ Contract No. KL/2011/01 "Kai Tak Development - Reconstruction and Upgrading of Kai Tak Nullah"

Task Force on Kai Tak Harbourfront Development

TFKT/11/2013

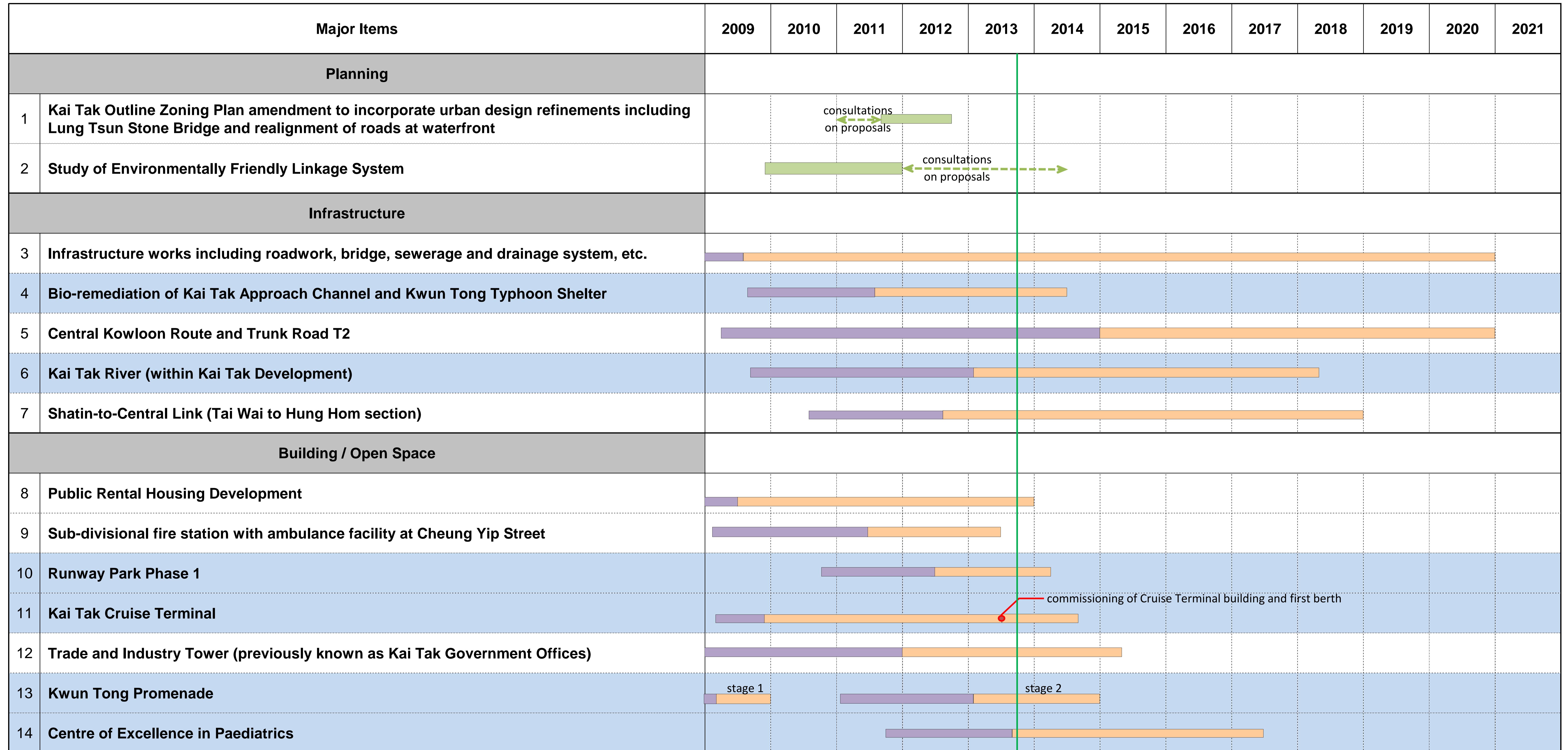
ANNEXES

Annex A - Updated Programme Chart

Annex B - Projects Planned for Completion in 2013

**Task Force on Kai Tak Harbourfront Development
Kai Tak Development - Programme Chart (as of September 2013)**

Annex A



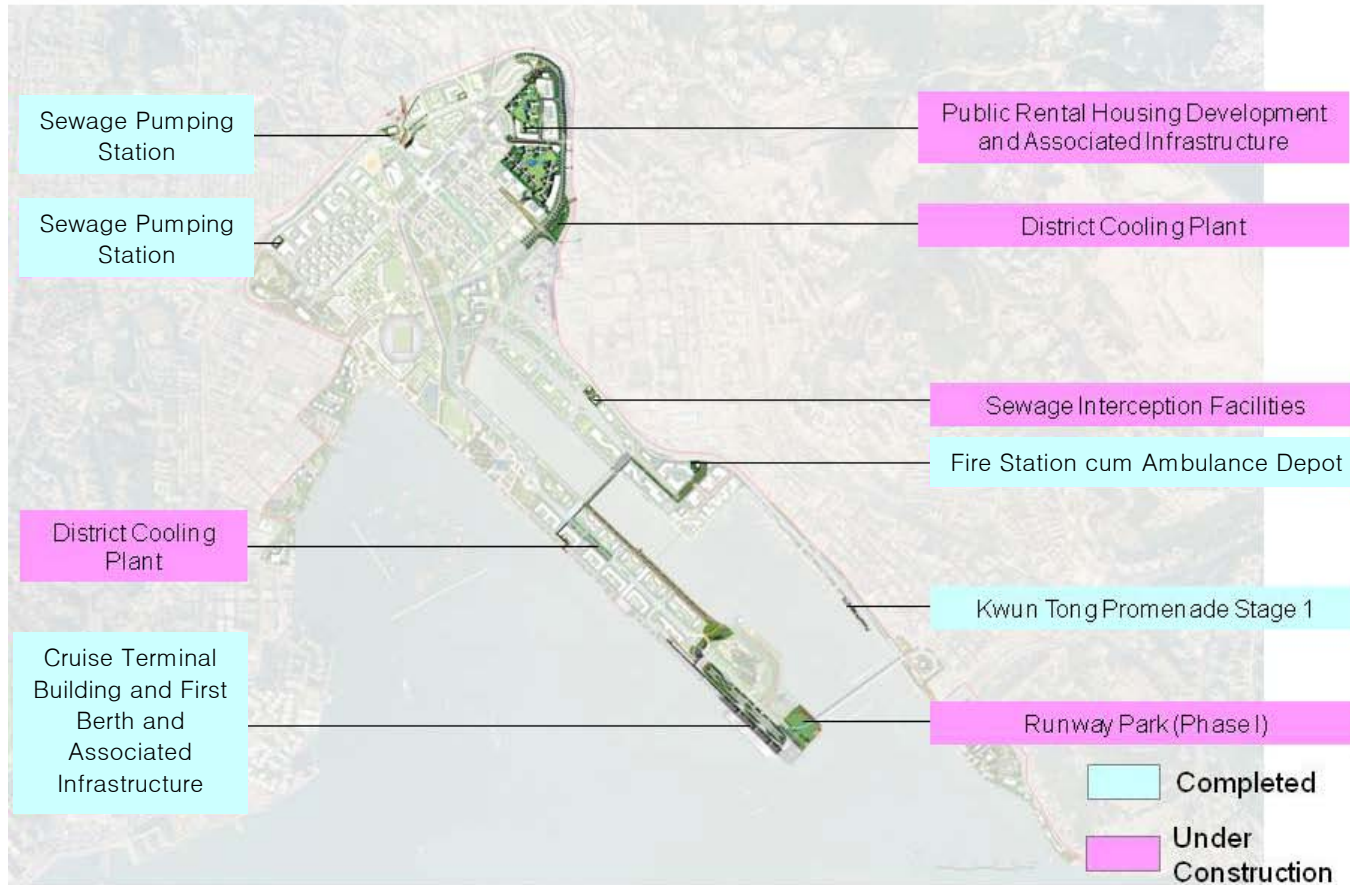
Note:
The above programme is tentative and subject to review due to future planning and design, and approval such as for securing funding.

Legend



Task Force on Kai Tak Harbourfront Development

Annex B



Projects Planned for Completion in 2013