

Task Force on Kai Tak Harbourfront Development

For discussion
on 1 Jun 2011

TFKT/09/2011

Revised Design of First Phase of Runway Park at Kai Tak

PURPOSE

This paper is to further consult Members on the design of the first phase of Runway Park at Kai Tak.

BACKGROUND

2. At the third meeting of the Task Force held on 11 January 2011, the design of first phase of Runway Park was presented for Members' comments. Members considered that since the site of Runway Park is at a location with prominent harbourfront views, high quality planning and maximum utilisation of the site is necessary. To avoid compromising the final design of the park, the first phase should have a simple design. Members also proposed that the area of the park to be developed under the first phase be extended to include a larger lawn so that cruise terminal visitors can walk straight from the Cruise Terminal exit to the waterfront facing Kwun Tong through the lawn. Members further proposed that there should be facilities for staging activities in the first phase to attract visitors going to the park. Concern on the impact of the weather station at the former runway tip on the design of the first phase was also expressed and Members considered that the weather station should be planned for relocation in the longer run.

3. Taken into account Members' views presented at the third meeting, the progress of redesigning the first phase of Runway Park was reported to Members at the fourth meeting on 31 March 2011. The revised scheme included an enlarged lawn area to be developed under the first phase and a simplified design to reduce abortive works and allow greater flexibility for the second phase development. Members

Task Force on Harbourfront Developments in Kai Tak Development

expressed concern over the extended construction period and urged for progress in formulating the revised design of the first phase of Runway Park.

REVISED DESIGN

4. In the light of Members' comments and to address their concerns, a revised design of the first phase of Runway Park was formulated for provision of the following basic facilities:-

- (a) a waterfront promenade at the runway tip facing Lei Yue Mun and along the waterfront facing Kwun Tong with a continuous traffic free pedestrian green walkway, sitting out areas and adequate rain shelters at suitable locations with the provision of adequate power sockets for staging events and water points for watering plants;
- (b) a large lawn and extensive landscaped area with sitting-out facilities and extensive soft landscape plantings; and
- (c) a sufficient number of toilets and ancillary facilities.

The proposed revised design of the first phase of Runway Park is at **Annexes A to D**.

4. The total area to be developed under the first phase increased from 12,500m² to 27,700m². The lawn is now expanded to cover an area of some 15,000m² and will extend to the area where Cruise Terminal visitors can walk straight from the Cruise Terminal Building to the waterfront facing Kwun Tong through the lawn. Regarding Members' concern on the weather station at the former runway tip, some soft landscape will be provided around the weather station for beautification purpose in order to better integrate it with the park.

Task Force on Harbourfront Developments in Kai Tak Development

5. Subject to funding approval for timely commencement of construction works, it is targeted for some 12,500m² of the park, i.e. the waterfront promenade with seating, rain shelters and soft landscape area, to be completed by mid 2013 for public enjoyment. As the larger lawn covers an area of some 15,000m² and turf can only be laid after completion of all the supporting construction works, this portion will be opened to the public in late 2013 to allow sufficient time for grass establishment.

VIEWS SOUGHT

6. Members are invited to offer further comments, if any, on the revised design.

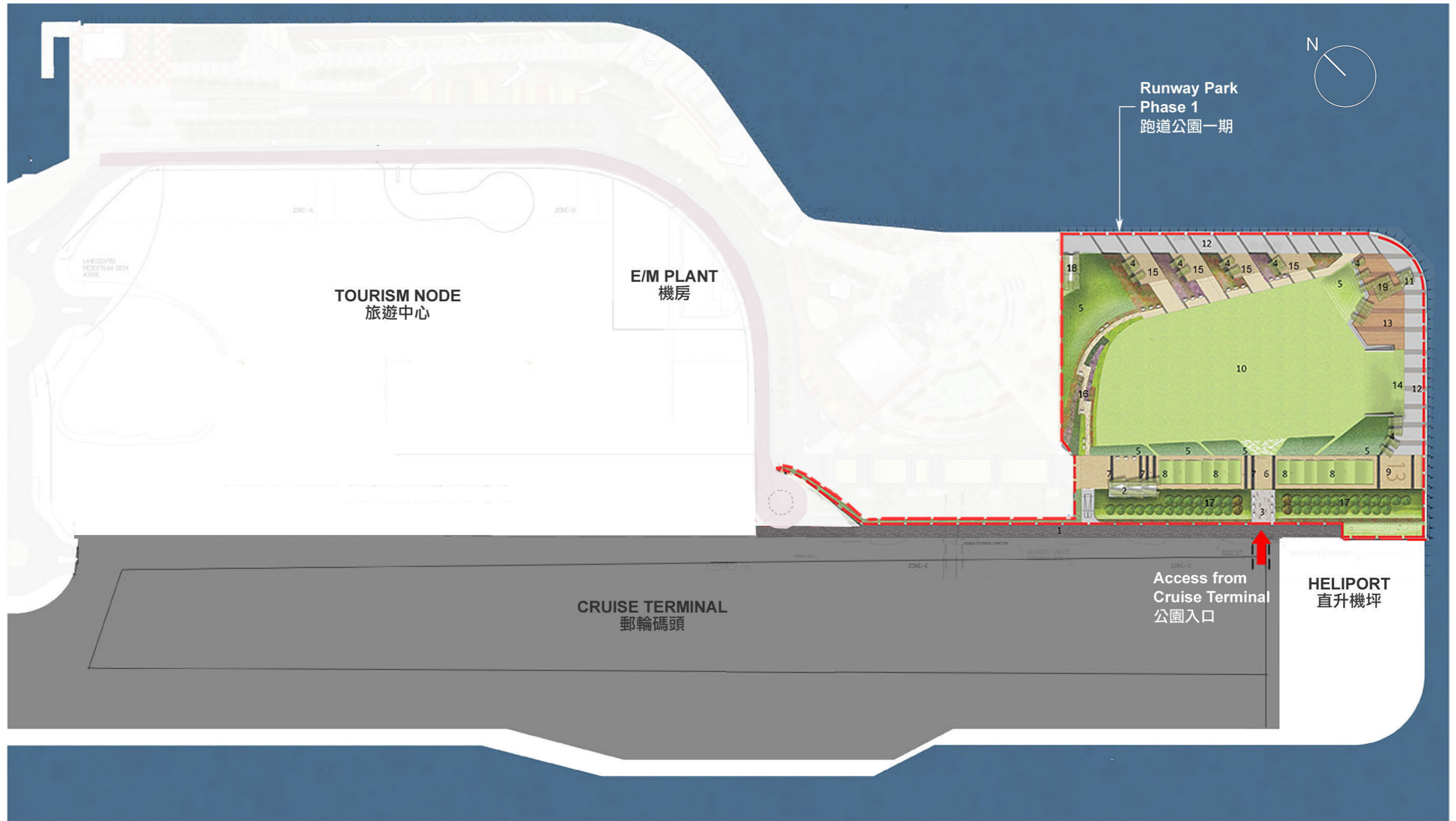
**Architectural Services Department
Leisure and Cultural Services Department
May 2011**

Design Layout of First Phase Runway Park

跑道公園一期總設計平面圖

Legend 索引

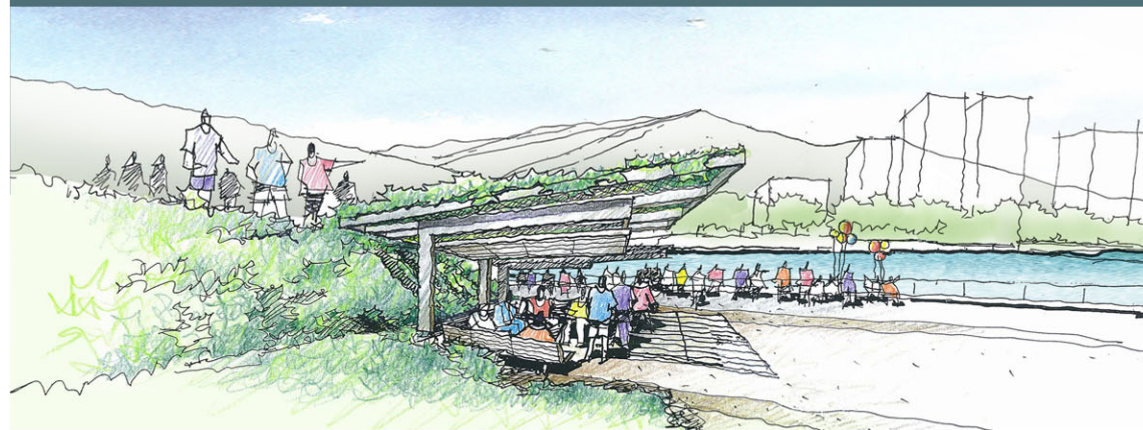
- | | | | | | | | |
|---------------------------|----------|---------------------------|----------|---------------------|-------|------------------|-------------------------------|
| 1 EVA | 消防緊急通道 | 7 paving | 鋪裝 | 13 plaza | 廣場 | 19 feature group | 特式休憩區 |
| 2 ancillary block | 洗手間及輔助設施 | 8 undulating lawn planter | 起伏草坪 | 14 grass ramp | 草坡道 | [Red dashed box] | Phase 1 Site Boundary
一期界線 |
| 3 entrance plaza | 入口廣場 | 9 "13"pavement | "13" 號跑道 | 15 pocket space | 口袋空間 | | |
| 4 arbors | 避雨亭 | 10 lawn | 多用途草坪 | 16 flower bed trail | 花壇步道 | | |
| 5 shrub planting | 灌木種植 | 11 weather station | 現存氣象站 | 17 green buffer | 綠色緩沖區 | | |
| 6 existing runway remnant | 跑道遺跡 | 12 waterfront promenade | 海濱長廊 | 18 pump room | 泵房 | | |



Annex A



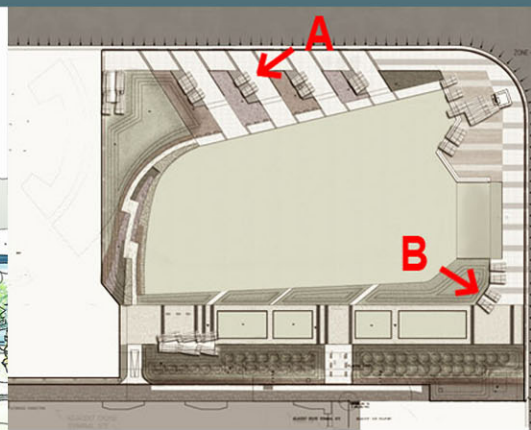
Southern Aerial View
南向鳥瞰圖



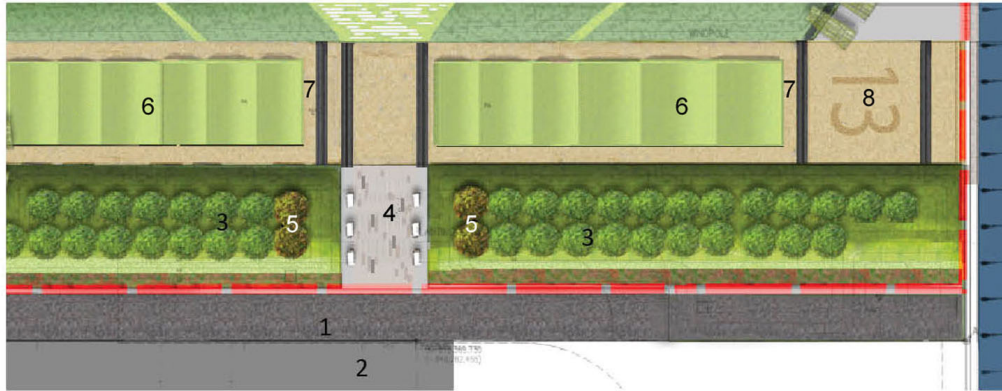
A. Arbours as viewed from waterfront promenade
避雨亭與海濱長廊



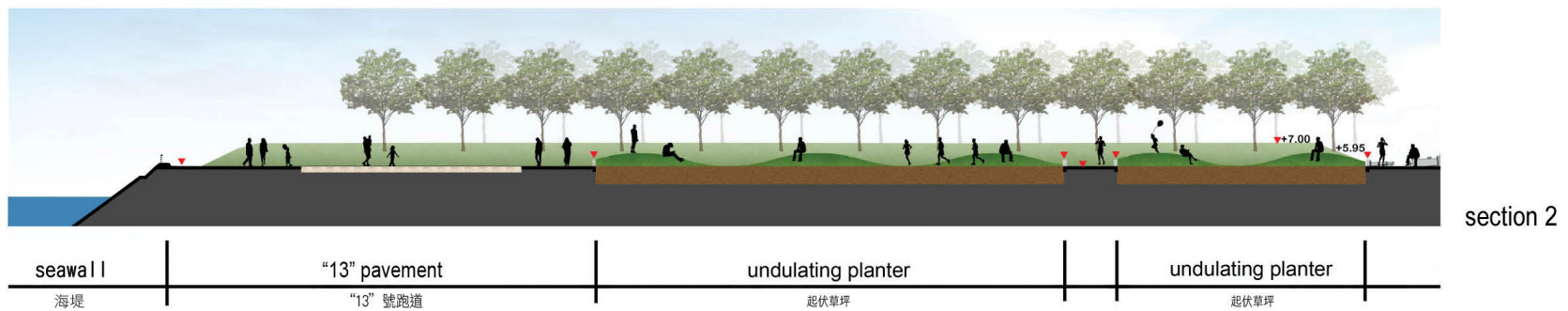
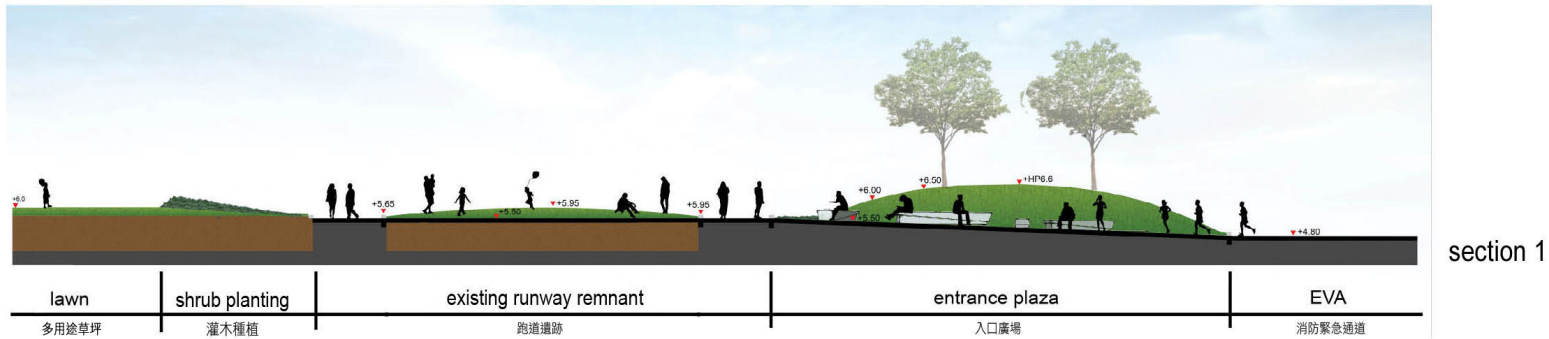
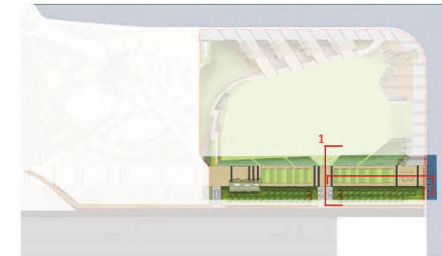
B. Southern view from lawn
從多用途草地向南望



Annex B



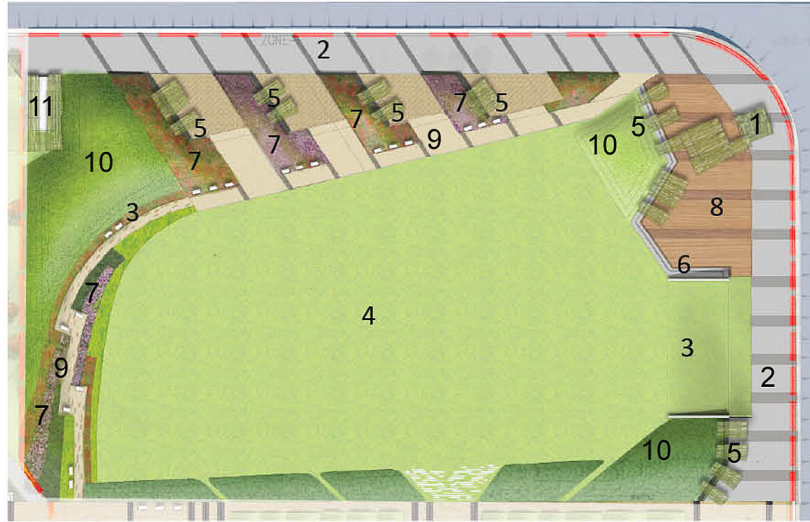
- Legend
- 1 EVA 消防緊急通道
 - 2 cruise terminal 郵輪碼頭
 - 3 green buffer 綠色緩沖區
 - 4 entrance plaza 入口廣場
 - 5 feature trees 迎客樹
 - 6 undulating lawn planter 起伏草坪
 - 7 paving 鋪裝
 - 8 "13" pavement "13" 號跑道



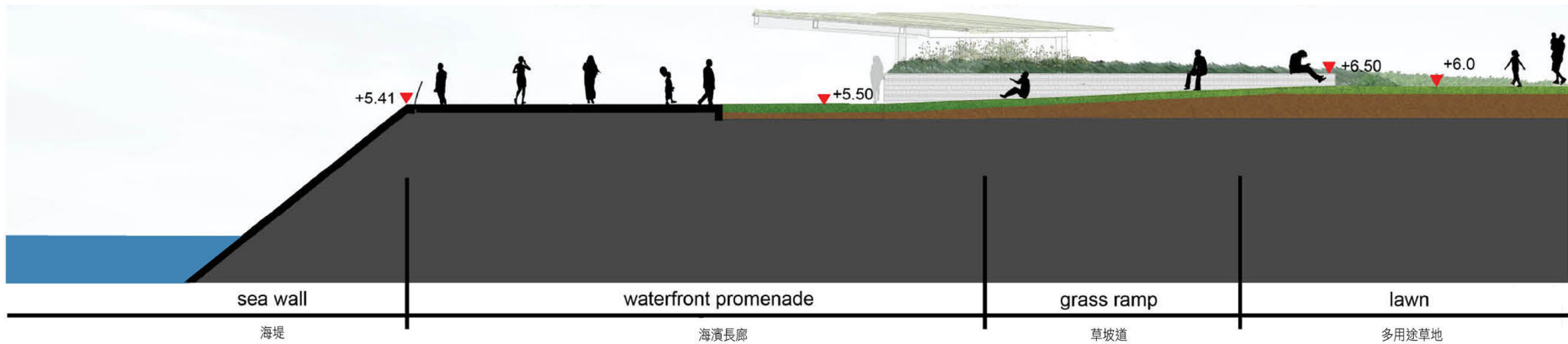
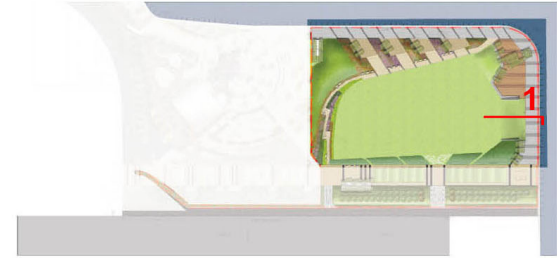
Annex C

Entrance Plaza & Runway Remnant

入口廣場及跑道遺跡



- Legend
- 1 Weather Station 現存氣象站
 - 2 waterfront promenade 海濱長廊
 - 3 grass ramp 草坡道
 - 4 lawn 多用途草地
 - 5 arbor 避雨亭
 - 6 steps 座級
 - 7 planter 花槽
 - 8 plaza 廣場
 - 9 flower bed trail 花壇步道
 - 10 shrub planting 灌木種植
 - 11 pump room 泵房



Annex D